

**KROGER CHERRY ANTACID SOFT CHEW- calcium carbonate tablet, chewable**  
**Kroger**

-----  
**Calcium Carbonate 1177 mg**

**Active ingredient (in each chew)**

Calcium Carbonate 1177 mg

**Purpose**

Antacid

**Uses** Relieves

- heartburn
- sour stomach
- acid indigestion
- upset stomach due to these symptoms

**Warnings**

**Ask a doctor or pharmacist before use if you are** now taking a prescription drug. Antacids may interact with certain prescription drugs.

**When using this product** do not take more than 6 chews in a 24-hour period, or use the maximum dosage for more than 2 weeks, except under the advice and supervision of a physician.

**If you are pregnant or breast-feeding,** ask a health professional before use.

**Keep out of reach of children.**

**Directions**

Chew and swallow 2 to 3 chews, as symptoms occur or as directed by a physician.

**Other information**

- **Each chew contains:** calcium 470 mg, magnesium 5 mg
- Contains milk and soy
- Store between 20° to 25°C (68° to 77°F) in a dry place
- Do not use if bag is torn or open

**Inactive ingredients:** Confectioner's sugar, corn starch, corn syrup, corn syrup solids, FD&C red #40 aluminum lake, glycerin, hydrogenated coconut oil, natural and artificial flavors, nonfat dry milk, propylene glycol, soy lecithin, sucrose, water.

**Questions or Comments?**

**1-800-632-6900**



TEAR HERE

TEAR HERE

RESEALABLE BAG

Do not use if bag  
is torn or open

ZIPPER AREA

**Kroger**  **health**



NDC 30142-267-32

COMPARE TO THE ACTIVE INGREDIENT  
IN TUMS® CHEWY DELIGHTS®

**ULTRA STRENGTH**

# Antacid Soft Chews <sup>UD</sup>

1,177 mg of CALCIUM CARBONATE

**Fast-Acting Relief**

GLUTEN-FREE



CHERRY  
FLAVOR

INDIVIDUALLY WRAPPED

FOR ILLUSTRATION

**RELIEVES:  
HEARTBURN,  
SOUR STOMACH,  
ACID INDIGESTION**

**32 SOFT CHEWS**

Bleed Front Panel Color/Image into Gussset

Bleed Back Panel Color/Image into Gusset



**DISTRIBUTED BY THE KROGER CO.**  
CINCINNATI, OHIO 45202  
For More Product Information,  
Scan UPC Using Your Kroger App  
or Call 800-632-6900

Tums® and Chewy Delights® are registered trademarks of GlaxoSmithKline Consumer Healthcare (US) IP LLC. GlaxoSmithKline Consumer Healthcare (US) IP LLC is not affiliated with The Kroger Co. or this product.

**Our Brands. Our Guarantee.**  
Love It or Your Money Back.  
www.kroger.com



**Questions or Comments?**

1-800-632-6900

**Inactive ingredients** Confectioner's sugar, corn starch, corn syrup, corn syrup solids, FD&C red #40 aluminum lake, glycerin, hydrogenated coconut oil, natural and artificial flavors, nonfat dry milk, propylene glycol, soy lecithin, sucrose, water.

- **Other information**
- Each chew contains: calcium 470 mg, magnesium 5 mg
- Contains milk and soy
- Store between 20° to 25°C (68° to 77°F) in a dry place
- Do not use if bag is torn or open

**Directions**

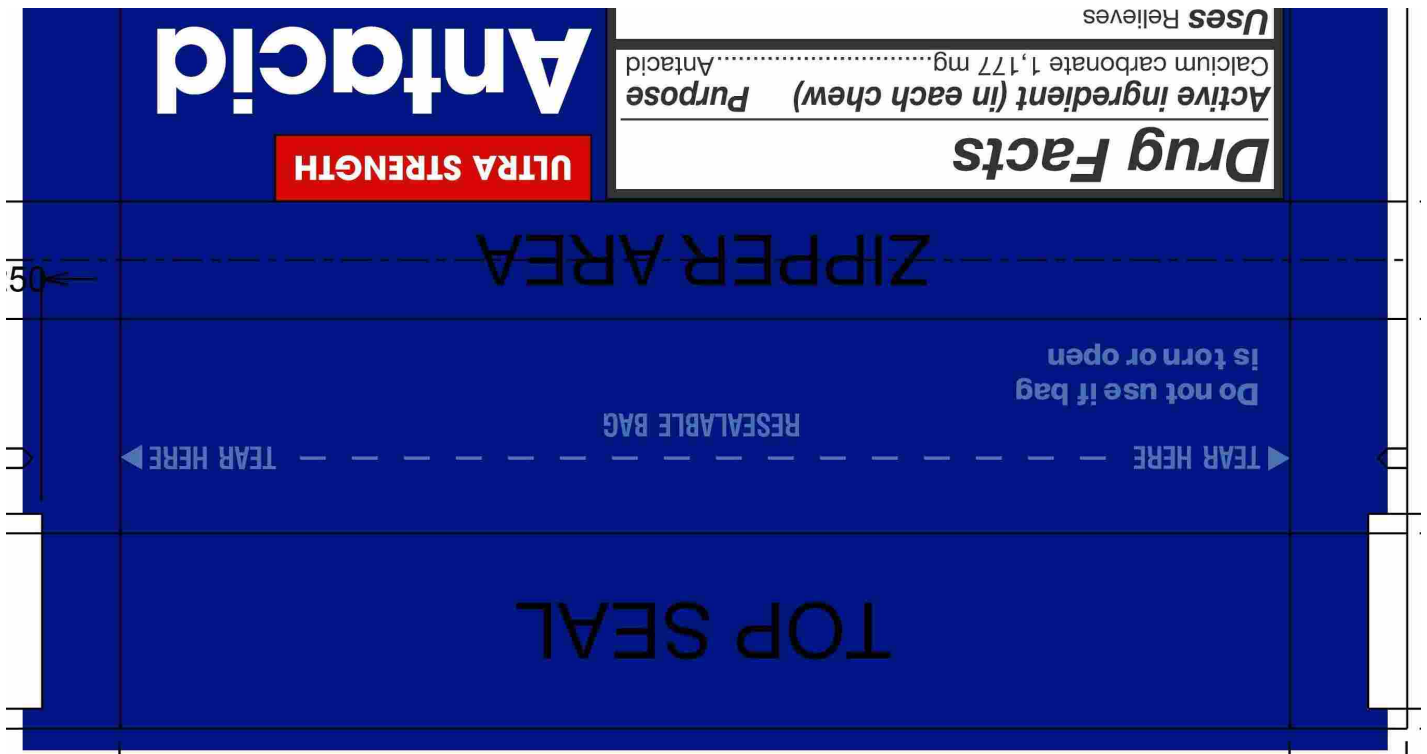
Chew and swallow 2 to 3 chews, as symptoms occur or as directed by a physician.

**Warnings**

- heartburn
- sour stomach
- acid indigestion
- upset stomach due to these symptoms

**When using this product** do not take more than 6 chews in a 24-hour period, or use the maximum dosage for more than 2 weeks, except under the advice and supervision of a physician. **If you are pregnant or breast-feeding,** ask a health professional before use. **Keep out of reach of children.**

**Soft Chews®**  
1,177 mg of CALCIUM CARBONATE  
Fast-Acting Relief  
GLUTEN-FREE



## KROGER CHERRY ANTACID SOFT CHEW

calcium carbonate tablet, chewable

### Product Information

<b>Product Type</b>	HUMAN OTC DRUG	<b>Item Code (Source)</b>	NDC:30142-267
<b>Route of Administration</b>	ORAL		

### Active Ingredient/Active Moiety

Ingredient Name	Basis of Strength	Strength
<b>CALCIUM CARBONATE</b> (UNII: H0G9379FGK) (CALCIUM CATION - UNII:2M83C4R6ZB)	CALCIUM CARBONATE	1177 mg

### Inactive Ingredients

Ingredient Name	Strength
<b>WATER</b> (UNII: 059QF0KO0R)	

### Product Characteristics

<b>Color</b>	pink	<b>Score</b>	no score
<b>Shape</b>	RECTANGLE	<b>Size</b>	22mm
<b>Flavor</b>	CHERRY	<b>Imprint Code</b>	
<b>Contains</b>			

## Packaging

#	Item Code	Package Description	Marketing Start Date	Marketing End Date
1	NDC:30142-267-32	32 in 1 BAG; Type 0: Not a Combination Product	03/21/2024	



## Marketing Information

Marketing Category	Application Number or Monograph Citation	Marketing Start Date	Marketing End Date
OTC Monograph Drug	M001	03/21/2024	

**Labeler** - Kroger (006999528)

**Registrant** - Bestco (002149136)

## Establishment

Name	Address	ID/FEI	Business Operations
Bestco		002149136	manufacture(30142-267)

