

LEVONORGESTREL AND ETHINYL ESTRADIOL- levonorgestrel and ethinyl estradiol

Naari Pte Limited

Levonorgestrel and Ethinyl Estradiol Tablets USP

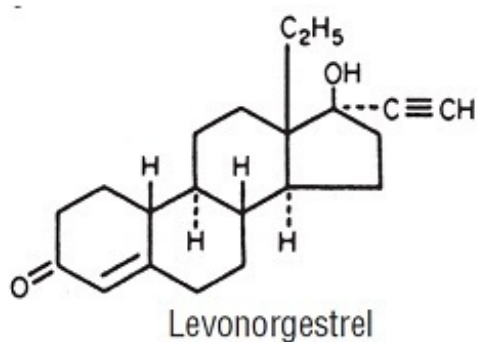
Rx only

Patients should be counseled that oral-contraceptives do not protect against transmission of HIV (AIDS) and other sexually transmitted diseases (STDs) such as chlamydia, genital herpes, genital warts, gonorrhea, hepatitis B, and syphilis.

DESCRIPTION

Each active, white tablet (21) contains 0.1 mg of levonorgestrel, d(-)-13 β -ethyl-17 α -ethinyl-17 β -hydroxygon-4-en-3-one, a totally synthetic progestogen, and 0.02 mg of ethinyl estradiol, 17 α -ethinyl-1,3,5(10)-estratriene-3,17 β -diol. The inactive ingredients present are croscarmellose sodium, lactose monohydrate, magnesium stearate, microcrystalline cellulose, and povidone.

Each inactive, peach tablet (7) contains the following inactive ingredients: FD&C Yellow #6, lactose monohydrate, magnesium stearate, and pregelatinized starch (maize).



C₂₁H₂₈O₂ M.W. 312.45

C₂₀H₂₄O₂ M.W. 296.4

CLINICAL PHARMACOLOGY

Mode of Action

Combination oral-contraceptives act by suppression of gonadotropins. Although the

primary mechanism of this action is inhibition of ovulation, other alterations include changes in the cervical mucus (which increase the difficulty of sperm entry into the uterus) and the endometrium (which reduce the likelihood of implantation).

Pharmacokinetics

Absorption

No specific investigation of the absolute bioavailability of levonorgestrel and ethinyl estradiol tablets in humans has been conducted. However, literature indicates that levonorgestrel is rapidly and completely absorbed after oral administration (bioavailability about 100%) and is not subject to first-pass metabolism. Ethinyl estradiol is rapidly and almost completely absorbed from the gastrointestinal tract but, due to first-pass metabolism in gut mucosa and liver, the bioavailability of ethinyl estradiol is between 38% and 48%.

After a single dose of levonorgestrel and ethinyl estradiol tablets to 22 women under fasting conditions, maximum serum concentrations of levonorgestrel are 2.8 ± 0.9 ng/mL (mean \pm SD) at 1.6 ± 0.9 hours. At steady state, attained from day 19 onwards, maximum levonorgestrel concentrations of 6.0 ± 2.7 ng/mL are reached at 1.5 ± 0.5 hours after the daily dose. The minimum serum levels of levonorgestrel at steady state are 1.9 ± 1.0 ng/mL. Observed levonorgestrel concentrations increased from day 1 (single dose) to days 6 and 21 (multiple doses) by 34% and 96%, respectively (Figure 1). Unbound levonorgestrel concentrations increased from day 1 to days 6 and 21 by 25% and 83%, respectively. The kinetics of total levonorgestrel are non-linear due to an increase in binding of levonorgestrel to sex hormone binding globulin (SHBG), which is attributed to increased SHBG levels that are induced by the daily administration of ethinyl estradiol.

Following a single dose, maximum serum concentrations of ethinyl estradiol of 62 ± 21 pg/mL are reached at 1.5 ± 0.5 hours. At steady state, attained from at least day 6 onwards, maximum concentrations of ethinyl estradiol were 77 ± 30 pg/mL and were reached at 1.3 ± 0.7 hours after the daily dose. The minimum serum levels of ethinyl estradiol at steady state are 10.5 ± 5.1 pg/mL. Ethinyl estradiol concentrations did not increase from days 1 to 6, but did increase by 19% from days 1 to 21 (FIGURE I).

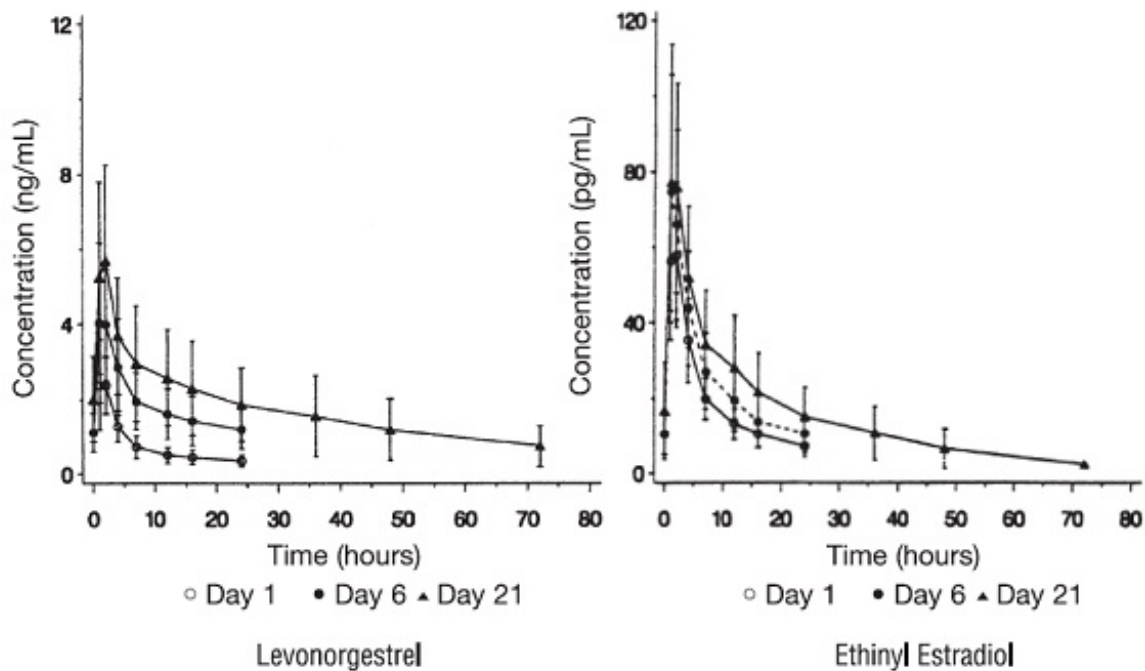


FIGURE I: Mean (SE) levonorgestrel and ethinyl estradiol serum concentrations in 22 subjects receiving levonorgestrel and ethinyl estradiol (100 mcg levonorgestrel and 20 mcg ethinyl estradiol)

TABLE I provides a summary of levonorgestrel and ethinyl estradiol pharmacokinetic parameters.

TABLE I: MEAN (SD) PHARMACOKINETIC PARAMETERS OF LEVONORGESTREL AND ETHINYL ESTRADIOL TABLETS OVER A 21-DAY DOSING PERIOD

Levonorgestrel						
Day	C _{max} ng/mL	T _{max} h	AUC ng•h/mL	CL/F mL/h/kg	V _{λz} /F L/kg	SHBG nmol/L
1	2.75 (0.88)	1.6 (0.9)	35.2 (12.8)	53.7 (20.8)	2.66 (1.09)	57 (18)
6	4.52 (1.79)	1.5 (0.7)	46.0 (18.8)	40.8 (14.5)	2.05 (0.86)	81 (25)
21	6.00 (2.65)	1.5 (0.5)	68.3 (32.5)	28.4 (10.3)	1.43 (0.62)	93 (40)
Unbound Levonorgestrel						
	pg/mL	h	pg•h/mL	L/h/kg	L/kg	fu%
1	51.2 (12.9)	1.6 (0.9)	654 (201)	2.79 (0.97)	135.9 (41.8)	1.92 (0.30)
6	77.9 (22.0)	1.5 (0.7)	794 (240)	2.24 (0.59)	112.4 (40.5)	1.80 (0.24)
21	103.6 (36.9)	1.5 (0.5)	1177 (452)	1.57 (0.49)	78.6 (29.7)	1.78 (0.19)
Ethinyl Estradiol						
	pg/mL	h	pg•h/mL	mL/h/kg	L/kg	
1	62.0	1.5	653 (227)	567 (204)	14.3	

	(20.5)	(0.5)			(3.7)	
6	76.7 (29.9)	1.3 (0.7)	604 (231)	610 (196)	15.5 (4.0)	
21	82.3 (33.2)	1.4 (0.6)	776 (308)	486 (179)	12.4 (4.1)	

Distribution

Levonorgestrel in serum is primarily bound to SHBG. Ethinyl estradiol is about 97% bound to plasma albumin. Ethinyl estradiol does not bind to SHBG, but induces SHBG synthesis.

Metabolism

Levonorgestrel: The most important metabolic pathway occurs in the reduction of the $\Delta 4$ -3-oxo group and hydroxylation at positions 2α , 1β , and 16β , followed by conjugation. Most of the metabolites that circulate in the blood are sulfates of $3\alpha,5\beta$ -tetrahydro-levonorgestrel, while excretion occurs predominantly in the form of glucuronides. Some of the parent levonorgestrel also circulates as 17β -sulfate. Metabolic clearance rates may differ among individuals by several-fold, and this may account in part for the wide variation observed in levonorgestrel concentrations among users.

Ethinyl estradiol: Cytochrome P450 enzymes (CYP3A4) in the liver are responsible for the 2-hydroxylation that is the major oxidative reaction. The 2-hydroxy metabolite is further transformed by methylation and glucuronidation prior to urinary and fecal excretion. Levels of Cytochrome P450 (CYP3A) vary widely among individuals and can explain the variation in rates of ethinyl estradiol 2-hydroxylation. Ethinyl estradiol is excreted in the urine and feces as glucuronide and sulfate conjugates, and undergoes enterohepatic circulation.

Excretion

The elimination half-life for levonorgestrel is approximately 36 ± 13 hours at steady-state. Levonorgestrel and its metabolites are primarily excreted in the urine (40% to 68%) and about 16% to 48% are excreted in feces. The elimination half-life of ethinyl estradiol is 18 ± 4.7 hours at steady state.

Special Populations

Race

Based on the pharmacokinetic study with levonorgestrel and ethinyl estradiol, there are no apparent differences in pharmacokinetic parameters among women of different races.

Hepatic insufficiency

No formal studies have evaluated the effect of hepatic disease on the disposition of levonorgestrel and ethinyl estradiol. However, steroid hormones may be poorly metabolized in patients with impaired liver function.

Renal insufficiency

No formal studies have evaluated the effect of renal disease on the disposition of levonorgestrel and ethinyl estradiol.

Drug-Drug Interactions

See PRECAUTIONS section - Drug Interactions.

INDICATIONS AND USAGE

Levonorgestrel and ethinyl estradiol tablets are indicated for the prevention of pregnancy in women who elect to use oral-contraceptives as a method of contraception.

Oral-contraceptives are highly effective. Table II lists the typical accidental pregnancy rates for users of combination oral-contraceptives and other methods of contraception. The efficacy of these contraceptive methods, except sterilization, the IUD, and Norplant[®] System, depends upon the reliability with which they are used. Correct and consistent use of methods can result in lower failure rates.

Table II: Percentage of Women Experiencing An Unintended Pregnancy During The First Year Of Typical Use And the First Year Of Perfect Use Of Contraception And The Percentage Continuing Use At The End Of The First Year. United States.

Method	% of Women Experiencing an Unintended Pregnancy within the First Year of Use		% of Women Continuing Use at One Year³
	Typical Use¹	Perfect Use²	
(1)	(2)	(3)	(4)
Chance ⁴	85	85	
Spermicides ⁵	26	6	40
Periodic abstinence	25		63
Calendar		9	
Ovulation Method		3	
Sympto-Thermal ⁶		2	
Post-Ovulation		1	
Cap ⁷			
Parous Women	40	26	42
Nulliparous Women	20	9	56
Sponge			
Parous Women	40	20	42
Nulliparous Women	20	9	56

Diaphragm ⁷	20	6	56
Withdrawal	19	4	
Condom ⁸			
Female (Reality)	21	5	56
Male	14	3	61
Pill	5		71
Progestin only		0.5	
Combined		0.1	
IUD			
Progesterone T	2.0	1.5	81
Copper T380A	0.8	0.6	78
LNg 20	0.1	0.1	81
Depo-Provera [®]	0.3	0.3	70
Levonorgestrel			
Implants (Norplant [®])	0.05	0.05	88
Female Sterilization	0.5	0.5	100
Male Sterilization	0.15	0.10	100

Emergency Contraceptive Pills: The FDA has concluded that certain combined oral contraceptives containing ethinyl estradiol and norgestrel or levonorgestrel are safe and effective for use as postcoital emergency contraception. Treatment initiated within 72 hours after unprotected intercourse reduces the risk of pregnancy by at least 75%. ⁹

Lactation Amenorrhea Method: LAM is a highly effective, temporary method of contraception. ¹⁰

Source: Trussell J. Contraceptive efficacy. In: Hatcher RA, Trussell J, Stewart F, Cates W, Stewart GK, Kowel D, Guest F. Contraceptive Technology: Seventeenth Revised Edition. New York NY: Irvington Publishers; 1998.

1. Among *typical* couples who initiate use of a method (not necessarily for the first time), the percentage who experience an accidental pregnancy during the first year if they do not stop use for any other reason.
2. Among couples who initiate use of a method (not necessarily for the first time) and who use it perfectly (both consistently and correctly), the percentage who experience an accidental pregnancy during the first year if they do not stop use for any other reason.
3. Among couples attempting to avoid pregnancy, the percentage who continue to use a method for one year.
4. The percents becoming pregnant in columns (2) and (3) are based on data from populations where contraception is not used and from women who cease using contraception in order to become pregnant. Among such populations, about 89% become pregnant within one year. This estimate was lowered slightly (to 85%) to represent the percent who would become pregnant within one year among women now relying on reversible methods of contraception if they abandoned contraception

altogether.

5. Foams, creams, gels, vaginal suppositories, and vaginal film.
6. Cervical mucus (ovulation) method supplemented by calendar in the pre-ovulatory and basal body temperature in the post-ovulatory phases.
7. With spermicidal cream or jelly.
8. Without spermicides.
9. The treatment schedule is one dose within 72 hours after unprotected intercourse, and a second dose 12 hours after the first dose. The FDA has declared the following dosage regimens of oral-contraceptives to be safe and effective for emergency contraception: for tablets containing 50 mcg of ethinyl estradiol and 500 mcg of norgestrel 1 dose is 2 tablets; for tablets containing 20 mcg of ethinyl estradiol and 100 mcg of levonorgestrel 1 dose is 5 tablets; for tablets containing 30 mcg of ethinyl estradiol and 150 mcg of levonorgestrel 1 dose is 4 tablets.
10. However, to maintain effective protection against pregnancy, another method of contraception must be used as soon as menstruation resumes, the frequency or duration of breastfeeds is reduced, bottle feeds are introduced, or the baby reaches 6 months of age.

In a clinical trial with levonorgestrel and ethinyl estradiol tablets, 1,477 subjects had 7,720 cycles of use and a total of 5 pregnancies were reported. This represents an overall pregnancy rate of 0.84 per 100 woman-years. This rate includes patients who did not take the drug correctly. One or more pills were missed during 1,479 (18.8%) of the 7,870 cycles; thus all tablets were taken during 6,391 (81.2%) of the 7,870 cycles.

Of the total 7,870 cycles, a total of 150 cycles were excluded from the calculation of the Pearl index due to the use of backup contraception and/or missing 3 or more consecutive pills.

CONTRAINDICATIONS

Combination oral-contraceptives should not be used in women with any of the following conditions:

- Thrombophlebitis or thromboembolic disorders
- A history of deep-vein thrombophlebitis or thromboembolic disorders
- Cerebrovascular or coronary artery disease (current or past history)
- Valvular heart disease with thrombogenic complications
- Thrombogenic rhythm disorders
- Hereditary or acquired thrombophilias
- Major surgery with prolonged immobilization
- Diabetes with vascular involvement
- Headaches with focal neurological symptoms
- Uncontrolled hypertension
- Current diagnosis of, or history of, breast cancer, which may be hormone-sensitive
- Carcinoma of the endometrium or other known or suspected estrogen-dependent neoplasia
- Undiagnosed abnormal genital bleeding
- Cholestatic jaundice of pregnancy or jaundice with prior pill use
- Hepatic adenomas or carcinomas, or active liver disease
- Known or suspected pregnancy
- Hypersensitivity to any of the components of levonorgestrel and ethinyl estradiol

tablets

Women who are receiving Hepatitis C drug combinations containing ombitasvir/paritaprevir/ritonavir, with or without dasabuvir, due to the potential for alanine aminotransferase (ALT) elevations (see **WARNINGS, RISK OF LIVER ENZYME ELEVATIONS WITH CONCOMITANT HEPATITIS C TREATMENT**).

WARNINGS

Cigarette smoking increases the risk of serious cardiovascular side effects from oral- contraceptive use. This risk increases with age and with the extent of smoking (in epidemiologic studies, 15 or more cigarettes per day was associated with a significantly increased risk) and is quite marked in women over 35 years of age. Women who use oral-contraceptives should be strongly advised not to smoke.

The use of oral-contraceptives is associated with increased risks of several serious conditions including venous and arterial thrombotic and thromboembolic events (such as myocardial infarction, thromboembolism, and stroke), hepatic neoplasia, gallbladder disease, and hypertension, although the risk of serious morbidity or mortality is very small in healthy women without underlying risk factors. The risk of morbidity and mortality increases significantly in the presence of other underlying risk factors such as certain inherited or acquired thrombophilias, hypertension, hyperlipidemias, obesity, diabetes, and surgery or trauma with increased risk of thrombosis (see CONTRAINDICATIONS)

Practitioners prescribing oral-contraceptives should be familiar with the following information relating to these risks.

The information contained in this package insert is principally based on studies carried out in patients who used oral-contraceptives with higher doses of estrogens and progestogens than those in common use today.

The effect of long-term use of the oral-contraceptives with lower doses of both estrogens and progestogens remains to be determined.

Throughout this labeling, epidemiological studies reported are of two types: retrospective or case control studies and prospective or cohort studies. Case control studies provide a measure of the relative risk of disease, namely, a ratio of the incidence of a disease among oral-contraceptive users to that among nonusers. The relative risk does not provide information on the actual clinical occurrence of a disease.

Cohort studies provide a measure of attributable risk, which is the difference in the incidence of disease between oral-contraceptive users and nonusers. The attributable risk does provide information about the actual occurrence of a disease in the population. For further information, the reader is referred to a text on epidemiological methods.

1. Thromboembolic Disorders and Other Vascular Problems

a. Myocardial infarction

An increased risk of myocardial infarction has been attributed to oral-contraceptive use. This risk is primarily in smokers or women with other underlying risk factors for coronary-artery disease such as hypertension, hypercholesterolemia, morbid obesity,

and diabetes. The relative risk of heart attack for current oral-contraceptive users has been estimated to be two to six. The risk is very low under the age of 30.

Smoking in combination with oral-contraceptive use has been shown to contribute substantially to the incidence of myocardial infarction in women in their mid-thirties or older with smoking accounting for the majority of excess cases. Mortality rates associated with circulatory disease have been shown to increase substantially in smokers over the age of 35 and nonsmokers over the age of 40 (FIGURE II) among women who use oral-contraceptives.

CIRCULATORY DISEASE MORTALITY RATES PER 100,000 WOMAN YEARS BY AGE, SMOKING STATUS AND ORAL-CONTRACEPTIVE USE

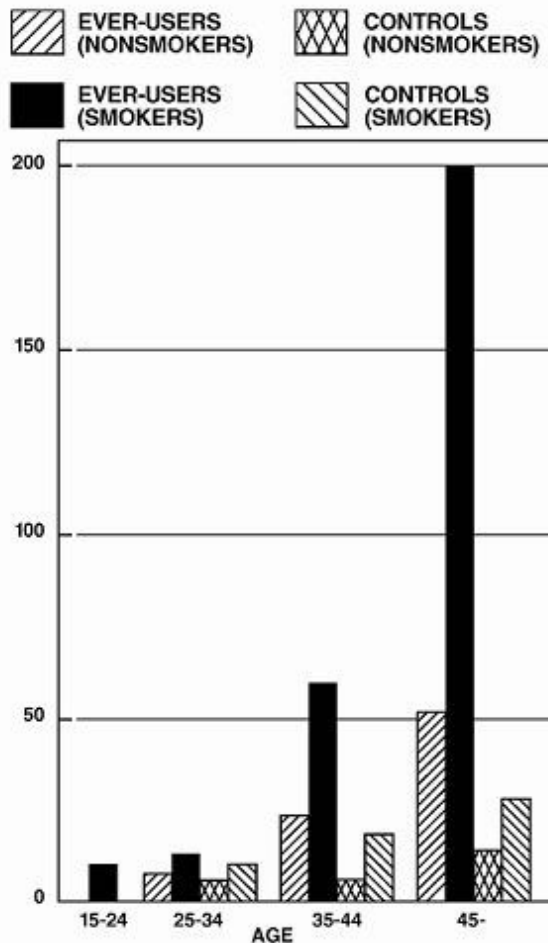


FIGURE II: (Adapted from P.M. Layde and V. Beral, Lancet, 1:541-546, 1981.)

Oral-contraceptives may compound the effects of well-known risk factors, such as hypertension, diabetes, hyperlipidemias, age, and obesity. In particular, some progestogens are known to decrease HDL cholesterol and cause glucose intolerance, while estrogens may create a state of hyperinsulinism.

Oral-contraceptives have been shown to increase blood pressure among users (see section 10 in **WARNINGS**). Similar effects on risk factors have been associated with an increased risk of heart disease. Oral-contraceptives must be used with caution in women with cardiovascular disease risk factors.

b. Venous thrombosis and thromboembolism:

An increased risk of venous thromboembolic and thrombotic disease associated with the use of oral-contraceptives is well established. Case control studies have found the relative risk of users compared to non-users to be 3 for the first episode of superficial venous thrombosis, 4 to 11 for deep-vein thrombosis or pulmonary embolism, and 1.5 to 6 for women with predisposing conditions for venous thromboembolic disease. Cohort studies have shown the relative risk to be somewhat lower, about 3 for new cases and about 4.5 for new cases requiring hospitalization. The approximate incidence of deep-vein thrombosis and pulmonary embolism in users of low dose (< 50 mcg ethinyl estradiol) combination oral-contraceptives is up to 4 per 10,000 woman-years compared to 0.5 to 3 per 10,000 woman-years for non-users. However, the incidence is less than that associated with pregnancy (6 per 10,000 woman-years). The excess risk is highest during the first year a woman ever uses a combined oral-contraceptive. Venous thromboembolism may be fatal. The risk of thromboembolic disease due to oral-contraceptives is not related to length of use and gradually disappears after pill use is stopped.

A two- to four-fold increase in relative risk of postoperative thromboembolic complications has been reported with the use of oral-contraceptives. The relative risk of venous thrombosis in women who have predisposing conditions is twice that of women without such medical conditions. If feasible, oral-contraceptives should be discontinued at least four weeks prior to and for two weeks after elective surgery of a type associated with an increase in risk of thromboembolism and during and following prolonged immobilization. Since the immediate postpartum period is also associated with an increased risk of thromboembolism, oral-contraceptives should be started no earlier than four weeks after delivery in women who elect not to breast-feed or after a midtrimester pregnancy termination.

c. Cerebrovascular diseases

Oral-contraceptives have been shown to increase both the relative and attributable risks of cerebrovascular events (thrombotic and hemorrhagic strokes), although, in general, the risk is greatest among older (> 35 years), hypertensive women who also smoke. Hypertension was found to be a risk factor for both users and nonusers, for both types of strokes, while smoking interacted to increase the risk for hemorrhagic strokes.

In a large study, the relative risk of thrombotic strokes has been shown to range from 3 for normotensive users to 14 for users with severe hypertension. The relative risk of hemorrhagic stroke is reported to be 1.2 for nonsmokers who used oral-contraceptives, 2.6 for smokers who did not use oral-contraceptives, 7.6 for smokers who used oral-contraceptives, 1.8 for normotensive users and 25.7 for users with severe hypertension. The attributable risk is also greater in older women. Oral-contraceptives also increase the risk for stroke in women with other underlying risk factors such as certain inherited or acquired thrombophilias. Women with migraine (particularly migraine/headaches with focal neurological symptoms, see CONTRAINDICATIONS) who take combination oral-contraceptives may be at an increased risk of stroke.

d. Dose-related risk of vascular disease from oral-contraceptives:

A positive association has been observed between the amount of estrogen and progestogen in oral-contraceptives and the risk of vascular disease. A decline in serum high-density lipoproteins (HDL) has been reported with many progestational agents. A decline in serum high-density lipoproteins has been associated with an increased incidence of ischemic heart disease. Because estrogens increase HDL cholesterol, the

net effect of an oral-contraceptive depends on a balance achieved between doses of estrogen and progestogen and the nature and absolute amount of progestogen used in the contraceptive. The amount of both hormones should be considered in the choice of an oral-contraceptive.

Minimizing exposure to estrogen and progestogen is in keeping with good principles of therapeutics. For any particular estrogen/progestogen combination, the dosage regimen prescribed should be one which contains the least amount of estrogen and progestogen that is compatible with a low failure rate and the needs of the individual patient. New acceptors of oral-contraceptive agents should be started on preparations containing the lowest estrogen content which is judged appropriate for the individual patient.

e. Persistence of risk of vascular disease:

There are two studies which have shown persistence of risk of vascular disease for ever-users of oral-contraceptives. In a study in the United States, the risk of developing myocardial infarction after discontinuing oral-contraceptives persists for at least 9 years for women 40 to 49 years who had used oral-contraceptives for five or more years, but this increased risk was not demonstrated in other age groups.

In another study in Great Britain, the risk of developing cerebrovascular disease persisted for at least 6 years after discontinuation of oral-contraceptives, although excess risk was very small. However, both studies were performed with oral-contraceptive formulations containing 50 mcg or higher of estrogens.

2. Estimates of Mortality from Contraceptive Use

One study gathered data from a variety of sources which have estimated the mortality rate associated with different methods of contraception at different ages (TABLE III). These estimates include the combined risk of death associated with contraceptive methods plus the risk attributable to pregnancy in the event of method failure. Each method of contraception has its specific benefits and risks. The study concluded that with the exception of oral-contraceptive users 35 and older who smoke and 40 and older who do not smoke, mortality associated with all methods of birth control is less than that associated with childbirth. The observation of a possible increase in risk of mortality with age for oral-contraceptive users is based on data gathered in the 1970's — but not reported until 1983. However, current clinical practice involves the use of lower estrogen dose formulations combined with careful restriction of oral-contraceptive use to women who do not have the various risk factors listed in this labeling.

Because of these changes in practice and, also, because of some limited new data which suggest that the risk of cardiovascular disease with the use of oral-contraceptives may now be less than previously observed, the Fertility and Maternal Health Drugs Advisory Committee was asked to review the topic in 1989. The Committee concluded that although cardiovascular disease risks may be increased with oral-contraceptive use after age 40 in healthy nonsmoking women (even with the newer low-dose formulations), there are greater potential health risks associated with pregnancy in older women and with the alternative surgical and medical procedures which may be necessary if such women do not have access to effective and acceptable means of contraception.

Therefore, the Committee recommended that the benefits of oral-contraceptive use by healthy nonsmoking women over 40 may outweigh the possible risks. Of course, older women, as all women who take oral-contraceptives, should take the lowest possible dose formulation that is effective.

TABLE III: ANNUAL NUMBER OF BIRTH-RELATED OR METHOD-RELATED DEATHS ASSOCIATED WITH CONTROL OF FERTILITY PER 100,000 NONSTERILE WOMEN, BY FERTILITY-CONTROL METHOD AND ACCORDING TO AGE

Method of control and outcome	15 to 19	20 to 24	25 to 29	30 to 34	35 to 39	40 to 44
No fertility-control methods *	7.0	7.4	9.1	14.8	25.7	28.2
Oral-contraceptives non-smoker †	0.3	0.5	0.9	1.9	13.8	31.6
Oral-contraceptives smoker †	2.2	3.4	6.6	13.5	51.1	117.2
IUD †	0.8	0.8	1.0	1.0	1.4	1.4
Condom *	1.1	1.6	0.7	0.2	0.3	0.4
Diaphragm/spermicide *	1.9	1.2	1.2	1.3	2.2	2.8
Periodic abstinence *	2.5	1.6	1.6	1.7	2.9	3.6

* Deaths are birth related

† Deaths are method related

Adapted from H.W.Ory, *Family Planning Perspectives*, 15: 57 to 63, 1983.

3. Malignant Neoplasms*Breast Cancer* Levonorgestrel and Ethinyl Estradiol Tablets is contraindicated in women who currently have or have had breast cancer because breast cancer may be hormonally sensitive [see Contraindications].

Epidemiology studies have not found a consistent association between use of combined oral contraceptives (COCs) and breast cancer risk. Studies do not show an association between ever (current or past) use of COCs and risk of breast cancer. However, some studies report a small increase in the risk of breast cancer among current or recent users (<6 months since last use) and current users with longer duration of COC use [see Postmarketing Experience].

Cervical Cancer

Some studies have found an increase in the incidence of cancer of the cervix in women who use oral contraceptives. However, this finding may be related to factors other than the use of oral contraceptives. There is insufficient evidence to rule out the possibility that the pill may cause such cancers.

4. Hepatic Neoplasia

Benign hepatic adenomas are associated with oral-contraceptive use, although the incidence of these benign tumors is rare in the United States. Indirect calculations have estimated the attributable risk to be in the range of 3.3 cases/100,000 for users, a risk that increases after four or more years of use. Rupture of rare, benign, hepatic adenomas may cause death through intra abdominal hemorrhage.

Studies from Britain have shown an increased risk of developing hepatocellular carcinoma in long-term (> 8 years) oral-contraceptive users. However, these cancers are extremely rare in the U.S. and the attributable risk (the excess incidence) of liver

cancers in oral-contraceptive users approaches less than one per million users.

5. Risk of Liver Enzyme Elevations with Concomitant Hepatitis C Treatment

During clinical trials with the Hepatitis C combination drug regimen that contains ombitasvir/paritaprevir/ritonavir, with or without dasabuvir, ALT elevations greater than 5 times the upper limit of normal (ULN), including some cases greater than 20 times the ULN, were significantly more frequent in women using ethinyl estradiol-containing medications such as COCs. Discontinue levonorgestrel and ethinyl estradiol tablets prior to starting therapy with the combination drug regimen ombitasvir/paritaprevir/ritonavir, with or without dasabuvir (see **CONTRAINDICATIONS**). Levonorgestrel and ethinyl estradiol tablets can be restarted approximately 2 weeks following completion of treatment with the combination drug regimen.

6. Ocular Lesions

There have been clinical case reports of retinal thrombosis associated with the use of oral-contraceptives that may lead to partial or complete loss of vision. Oral-contraceptives should be discontinued if there is unexplained partial or complete loss of vision; onset of proptosis or diplopia; papilledema; or retinal vascular lesions. Appropriate diagnostic and therapeutic measures should be undertaken immediately.

7. Oral-Contraceptive Use Before or During Early Pregnancy Extensive epidemiological studies have revealed no increased risk of birth defects in infants born to women who have used oral-contraceptives prior to pregnancy. Studies also do not suggest a teratogenic effect, particularly insofar as cardiac anomalies and limb-reduction defects are concerned, when taken inadvertently during early pregnancy (see **CONTRAINDICATIONS**).

The administration of oral-contraceptives to induce withdrawal bleeding should not be used as a test for pregnancy. Oral-contraceptives should not be used during pregnancy to treat threatened or habitual abortion.

It is recommended that for any patient who has missed two consecutive periods, pregnancy should be ruled out. If the patient has not adhered to the prescribed schedule, the possibility of pregnancy should be considered at the time of the first missed period. Oral-contraceptive use should be discontinued if pregnancy is confirmed.

8. Gallbladder Disease

Combination oral-contraceptives may worsen existing gallbladder disease and may accelerate the development of this disease in previously asymptomatic women. Earlier studies have reported an increased lifetime relative risk of gallbladder surgery in users of oral-contraceptives and estrogens. More recent studies, however, have shown that the relative risk of developing gallbladder disease among oral-contraceptive users may be minimal. The recent findings of minimal risk may be related to the use of oral-contraceptive formulations containing lower hormonal doses of estrogens and progestogens.

9. Carbohydrate and Lipid Metabolic Effects

Oral-contraceptives have been shown to cause glucose intolerance in a significant percentage of users. Oral-contraceptives containing greater than 75 mcg of estrogens cause hyperinsulinism, while lower doses of estrogen cause less glucose intolerance. Progestogens increase insulin secretion and create insulin resistance, this effect varying with different progestational agents. However, in the nondiabetic woman, oral-contraceptives appear to have no effect on fasting blood glucose. Because of these

demonstrated effects, prediabetic and diabetic women should be carefully observed while taking oral-contraceptives.

A small proportion of women will have persistent hypertriglyceridemia while on the pill. As discussed earlier (see **WARNINGS, 1a.** and **1d.; PRECAUTIONS, 3.**), changes in serum triglycerides and lipoprotein levels have been reported in oral-contraceptive users.

10. Elevated Blood Pressure

An increase in blood pressure has been reported in women taking oral-contraceptives and this increase is more likely in older oral-contraceptive users and with continued use. Data from the Royal College of General Practitioners and subsequent randomized trials have shown that the incidence of hypertension increases with increasing quantities of progestogens.

Women with a history of hypertension or hypertension-related diseases, or renal disease should be encouraged to use another method of contraception. If women with hypertension elect to use oral-contraceptives, they should be monitored closely and if significant elevation of blood pressure occurs, oral-contraceptives should be discontinued (See **CONTRAINDICATIONS** section). For most women, elevated blood pressure will return to normal after stopping oral-contraceptives, and there is no difference in the occurrence of hypertension among ever- and never-users.

11. Headache The onset or exacerbation of migraine or development of headache with a new pattern that is recurrent, persistent, or severe requires discontinuation of oral-contraceptives and evaluation of the cause. (See **WARNINGS 1c.** and **CONTRAINDICATIONS**)

12. Bleeding Irregularities

Breakthrough bleeding and spotting are sometimes encountered in patients on oral-contraceptives, especially during the first three months of use. The type and dose of progestogen may be important. If bleeding persists or recurs, nonhormonal causes should be considered and adequate diagnostic measures taken to rule out malignancy or pregnancy in the event of breakthrough bleeding, as in the case of any abnormal vaginal bleeding. If pathology has been excluded, time or a change to another formulation may solve the problem. In the event of amenorrhea, pregnancy should be ruled out.

Some women may encounter post-pill amenorrhea or oligomenorrhea (possibly with anovulation), especially when such a condition was preexistent.

13. Ectopic Pregnancy

Ectopic as well as intrauterine pregnancy may occur in contraceptive failures.

PRECAUTIONS

1. General

Patients should be counseled that oral-contraceptives do not protect against transmission of HIV (AIDS) and other sexually transmitted diseases (STDs) such as chlamydia, genital herpes, genital warts, gonorrhea, hepatitis B, and syphilis.

2. Physical Examination and Follow-Up

A periodic personal and family medical history and complete physical examination are appropriate for all women, including women using oral-contraceptives. The physical examination, however, may be deferred until after initiation of oral-contraceptives if requested by the woman and judged appropriate by the clinician. The physical examination should include special reference to blood pressure, breasts, abdomen, and pelvic organs, including cervical cytology, and relevant laboratory tests. In case of undiagnosed, persistent, or recurrent abnormal vaginal bleeding, appropriate diagnostic measures should be conducted to rule out malignancy. Women with a strong family history of breast cancer or who have breast nodules should be monitored with particular care.

3. Lipid Disorders

Women who are being treated for hyperlipidemias should be followed closely if they elect to use oral-contraceptives. Some progestogens may elevate LDL levels and may render the control of hyperlipidemias more difficult..(See **WARNINGS , 1a., 1d., and 9.)**

A small proportion of women will have adverse lipid changes while taking oral-contraceptives. Nonhormonal contraception should be considered in women with uncontrolled dyslipidemias. Persistent hypertriglyceridemia may occur in a small population of combination oral-contraceptive users. Elevations of plasma triglycerides may lead to pancreatitis and other complications.

4. Liver Function

If jaundice develops in any woman receiving such drugs, the medication should be discontinued. Steroid hormones may be poorly metabolized in patients with impaired liver function.

5. Fluid Retention

Oral-contraceptives may cause some degree of fluid retention. They should be prescribed with caution, and only with careful monitoring, in patients with conditions which might be aggravated by fluid retention.

6. Emotional Disorders

Patients becoming significantly depressed while taking oral-contraceptives should stop the medication and use an alternate method of contraception in an attempt to determine whether the symptom is drug related. Women with a history of depression should be carefully observed and the drug discontinued if depression recurs to a serious degree.

7. Contact Lenses

Contact-lens wearers who develop visual changes or changes in lens tolerance should be assessed by an ophthalmologist

8. Gastrointestinal

Diarrhea and/or vomiting may reduce hormone absorption resulting in decreased serum concentrations

9. Drug Interactions

Concomitant Use with HCV Combination Therapy - Liver Enzyme Elevation

Do not co-administer levonorgestrel and ethinyl estradiol tablets with HCV drug combinations containing ombitasvir/ paritaprevir/ritonavir, with or without dasabuvir, due to potential for ALT elevations (see **WARNINGS, RISK OF LIVER ENZYME ELEVATIONS WITH CONCOMITANT HEPATITIS C TREATMENT**).

Changes in Contraceptive Effectiveness Associated with Coadministration of Other Products: Contraceptive effectiveness may be reduced when hormonal contraceptives are coadministered with antibiotics, anticonvulsants, and other drugs that increase the metabolism of contraceptive steroids. This could result in unintended pregnancy or breakthrough bleeding. Examples include rifampin, rifabutin, barbiturates, primidone, phenylbutazone, phenytoin, dexamethasone, carbamazepine, felbamate, oxcarbazepine, topiramate, griseofulvin, and modafinil. In such cases a back-up nonhormonal method of birth control should be considered.

Several cases of contraceptive failure and breakthrough bleeding have been reported in the literature with concomitant administration of antibiotics such as ampicillin and other penicillins, and tetracyclines. However, clinical pharmacology studies investigating drug interactions between combined oral-contraceptives and these antibiotics have reported inconsistent results.

Several of the anti-HIV protease inhibitors have been studied with co-administration of oral combination hormonal contraceptives; significant changes (increase and decrease) in the plasma levels of the estrogen and progestin have been noted in some cases. The safety and efficacy of oral-contraceptive products may be affected with coadministration of anti-HIV protease inhibitors. Healthcare providers should refer to the label of the individual anti-HIV protease inhibitors for further drug-drug interaction information.

Herbal products containing St. John's Wort (*Hypericum perforatum*) may induce hepatic enzymes (cytochrome P 450) and p-glycoprotein transporter and may reduce the effectiveness of contraceptive steroids. This may also result in breakthrough bleeding.

Increase in Plasma Levels Associated with Co-Administered Drugs: Co-administration of atorvastatin and certain oral-contraceptives containing ethinyl estradiol increases AUC values for ethinyl estradiol by approximately 20%. Ascorbic acid and acetaminophen increase the bioavailability of ethinyl estradiol since these drugs act as competitive inhibitors for sulfation of ethinyl estradiol in the gastrointestinal wall, a known pathway of elimination for ethinyl estradiol. CYP 3A4 inhibitors such as indinavir, itraconazole, ketoconazole, fluconazole, and troleandomycin may increase plasma hormone levels. Troleandomycin may also increase the risk of intrahepatic cholestasis during coadministration with combination oral-contraceptives.

Changes in Plasma Levels of Co-Administered Drugs: Combination hormonal contraceptives containing some synthetic estrogens (eg, ethinyl estradiol) may inhibit the metabolism of other compounds. Increased plasma concentrations of cyclosporin, prednisolone and other corticosteroids, and theophylline have been reported with concomitant administration of oral-contraceptives. Decreased plasma concentrations of acetaminophen and increased clearance of temazepam, salicylic acid, morphine, and clofibric acid, due to induction of conjugation (particularly glucuronidation), have been noted when these drugs were administered with oral-contraceptives.

The prescribing information of concomitant medications should be consulted to identify potential interactions.

10. Interactions with Laboratory Tests

Certain endocrine- and liver-function tests and blood components may be affected by oral-contraceptives:

- a. Increased prothrombin and factors VII, VIII, IX, and X; decreased antithrombin 3; increased norepinephrine-induced platelet aggregability.
- b. Increased thyroid-binding globulin (TBG) leading to increased circulating total thyroid hormone, as measured by protein-bound iodine (PBI), T4 by column or by radioimmunoassay. Free T3 resin uptake is decreased, reflecting the elevated TBG; free T4 concentration is unaltered.
- c. Other binding proteins may be elevated in serum i.e., corticosteroid binding globulin (CBG), sex hormone-binding globulins (SHBG) leading to increased levels of total circulating corticosteroids and sex steroids respectively. Free or biologically active hormone concentrations are unchanged.
- d. Triglycerides may be increased and levels of various other lipids and lipoproteins may be affected.
- e. Glucose tolerance may be decreased.
- f. Serum folate levels may be depressed by oral-contraceptive therapy. This may be of clinical significance if a woman becomes pregnant shortly after discontinuing oral-contraceptives.

11. Carcinogenesis

See **WARNINGS** section.

12. Pregnancy

Pregnancy Category X. See **CONTRAINDICATIONS** and **WARNINGS** sections.

13. Nursing Mothers

Small amounts of oral-contraceptive steroids and/or metabolites have been identified in the milk of nursing mothers, and a few adverse effects on the child have been reported, including jaundice and breast enlargement. In addition, combination oral-contraceptives given in the postpartum period may interfere with lactation by decreasing the quantity and quality of breast milk. If possible, the nursing mother should be advised not to use combination oral-contraceptives but to use other forms of contraception until she has completely weaned her child.

14. Pediatric Use

Safety and efficacy of levonorgestrel and ethinyl estradiol tablets have been established in women of reproductive age. Safety and efficacy are expected to be the same for post-pubertal adolescents under the age of 16 and for users 16 years and older. Use of levonorgestrel and ethinyl estradiol tablets before menarche is not indicated.

15. Geriatric Use

Levonorgestrel and ethinyl estradiol tablets have not been studied in women over 65 years of age and is not indicated in this population.

16. Information for the Patient

See Patient Labeling Printed Below.

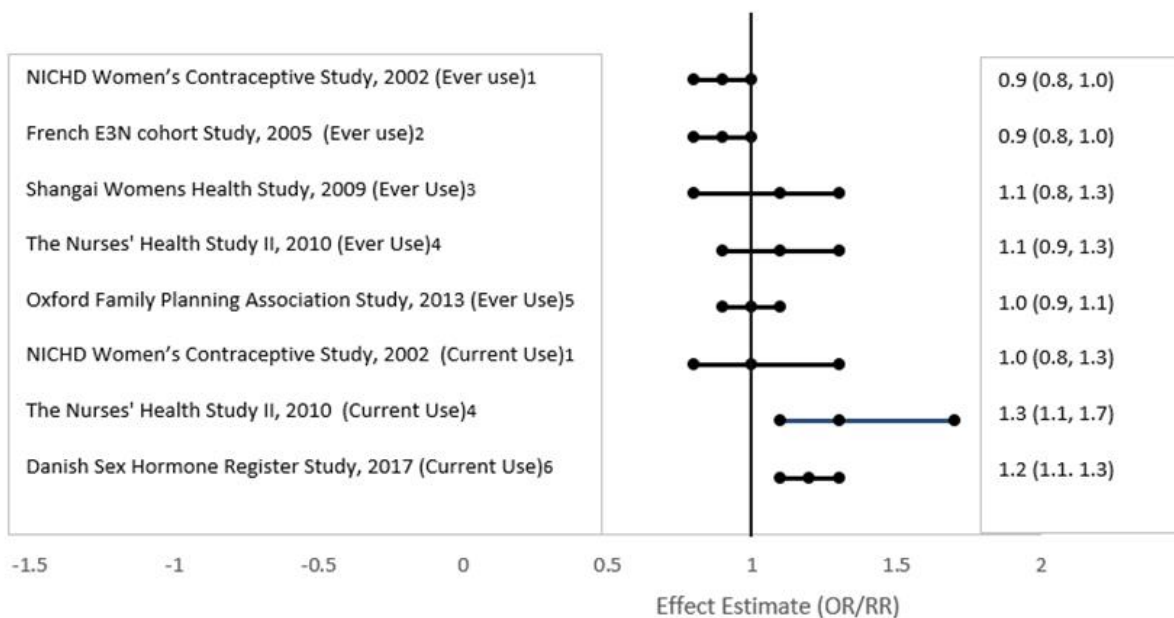
ADVERSE REACTIONS

Post Marketing Experience

Five studies that compared breast cancer risk between ever-users (current or past use) of COCs and never-users of COCs reported no association between ever use of COCs and breast cancer risk, with effect estimates ranging from 0.90 - 1.12 (Figure 2).

Three studies compared breast cancer risk between current or recent COC users (<6 months since last use) and never users of COCs (Figure 2). One of these studies reported no association between breast cancer risk and COC use. The other two studies found an increased relative risk of 1.19 - 1.33 with current or recent use. Both of these studies found an increased risk of breast cancer with current use of longer duration, with relative risks ranging from 1.03 with less than one year of COC use to approximately 1.4 with more than 8-10 years of COC use.

Risk of Breast Cancer with Combined Oral Contraceptive Use



RR = relative risk; OR = odds ratio; HR = hazard ratio. "ever COC" are females with current or past COC use; "never COC use" are females that never used COCs.

An increased risk of the following serious adverse reactions (see **WARNINGS** section for additional information) has been associated with the use of oral-contraceptives

Thromboembolic and thrombotic disorders and other vascular problems (including thrombophlebitis and venous thrombosis with or without pulmonary embolism, mesenteric thrombosis, arterial thromboembolism, myocardial infarction, cerebral hemorrhage, cerebral thrombosis), carcinoma of the reproductive organs and breasts, hepatic neoplasia (including hepatic adenomas or benign liver tumors), ocular lesions (including retinal vascular thrombosis), gallbladder disease, carbohydrate and lipid effects, elevated blood pressure, and headache including migraine.

The following adverse reactions have been reported in patients receiving oral-contraceptives and are believed to be drug related (alphabetically listed):

- Acne
- Amenorrhea
- Anaphylactic/anaphylactoid reactions, including urticaria, angioedema, and severe reactions with respiratory and circulatory symptoms
- Breast changes: tenderness, pain, enlargement, secretion

- Budd-Chiari syndrome
- Cervical erosion and secretion, change in
- Cholestatic jaundice
- Chorea, exacerbation of
- Colitis
- Contact lenses, intolerance to
- Corneal curvature (steepening), change in
- Dizziness
- Edema/fluid retention
- Erythema multiforme
- Erythema nodosum
- Gastrointestinal symptoms (such as abdominal pain, cramps, and bloating)
- Hirsutism
- Infertility after discontinuation of treatment, temporary
- Lactation, diminution in, when given immediately postpartum
- Libido, change in
- Melasma/chloasma which may persist
- Menstrual flow, change in
- Mood changes, including depression
- Nausea
- Nervousness
- Pancreatitis
- Porphyria, exacerbation of
- Rash (allergic)
- Scalp hair, loss of
- Serum folate levels, decrease in
- Spotting
- Systemic lupus erythematosus, exacerbation of
- Unscheduled bleeding
- Vaginitis, including candidiasis
- Varicose veins, aggravation of
- Vomiting
- Weight or appetite (increase or decrease), change in

The following adverse reactions have been reported in users of oral-contraceptives:

- Cataracts
- Cystitis-like syndrome
- Dysmenorrhea
- Hemolytic uremic syndrome
- Hemorrhagic eruption
- Optic neuritis, which may lead to partial or complete loss of vision
- Premenstrual syndrome
- Renal function, impaired

OVERDOSAGE

Symptoms of oral-contraceptive overdosage in adults and children may include nausea, vomiting, and drowsiness/fatigue; withdrawal bleeding may occur in females. There is no

specific antidote and further treatment of overdose, if necessary, is directed to the symptoms.

NONCONTRACEPTIVE HEALTH BENEFITS

The following noncontraceptive health benefits related to the use of oral-contraceptives are supported by epidemiological studies which largely utilized oral-contraceptive formulations containing doses exceeding 0.035 mg of ethinyl estradiol or 0.05 mg of mestranol.

Effects on menses:

- Increased menstrual cycle regularity
- Decreased blood loss and decreased incidence of iron-deficiency anemia
- Decreased incidence of dysmenorrhea

Effects related to inhibition of ovulation:

- Decreased incidence of functional ovarian cysts
- Decreased incidence of ectopic pregnancies

Effects from long-term use:

- Decreased incidence of fibroadenomas and fibrocystic disease of the breast
- Decreased incidence of acute pelvic inflammatory disease
- Decreased incidence of endometrial cancer
- Decreased incidence of ovarian cancer

DOSAGE AND ADMINISTRATION

To achieve maximum contraceptive effectiveness, levonorgestrel and ethinyl estradiol tablets must be taken exactly as directed and at intervals not exceeding 24 hours. The dosage of levonorgestrel and ethinyl estradiol tablets is one white tablet daily for 21 consecutive days, followed by one peach inert tablet daily for 7 consecutive days, according to the prescribed schedule. It is recommended that levonorgestrel and ethinyl estradiol tablets be taken at the same time each day.

During The First Cycle Of Use

The possibility of ovulation and conception prior to initiation of medication should be considered. The patient should be instructed to begin taking levonorgestrel and ethinyl estradiol tablets on either the first Sunday after the onset of menstruation (Sunday Start) or on Day 1 of menstruation (Day 1 Start).

Sunday start

The patient is instructed to begin taking levonorgestrel and ethinyl estradiol tablets on the first Sunday after the onset of menstruation. If menstruation begins on a Sunday, the first tablet (white) is taken that day. One white tablet should be taken daily for 21 consecutive days, followed by one peach inert tablet daily for 7 consecutive days. Withdrawal bleeding should usually occur within 3 days following discontinuation of white tablets and may not have finished before the next pack is started. During the first cycle, contraceptive reliance should not be placed on levonorgestrel and ethinyl estradiol tablets until a white tablet has been taken daily for 7 consecutive days, and a nonhormonal back-up method of birth control should be used during those 7 days.

Day 1 start

During the first cycle of medication, the patient is instructed to begin taking levonorgestrel and ethinyl estradiol tablets during the first 24 hours of her period (day one of her menstrual cycle). One white tablet should be taken daily for 21 consecutive days, followed by one peach inert tablet daily for 7 consecutive days. Withdrawal bleeding should usually occur within 3 days following discontinuation of white tablets and may not have finished before the next pack is started. If medication is begun on day one of the menstrual cycle, no back-up contraception is necessary. If levonorgestrel and ethinyl estradiol tablets are started later than day one of the first menstrual cycle or postpartum, contraceptive reliance should not be placed on levonorgestrel and ethinyl estradiol tablets until after the first 7 consecutive days of administration, and a nonhormonal back-up method of birth control should be used during those 7 days.

After the first cycle of use

The patient begins her next and all subsequent courses of tablets on the day after taking her last peach tablet. She should follow the same dosing schedule: 21 days on white tablets followed by 7 days on peach tablets. If in any cycle the patient starts tablets later than the proper day, she should protect herself against pregnancy by using a nonhormonal back-up method of birth control until she has taken a white tablet daily for 7 consecutive days.

Switching from another hormonal method of contraception

When the patient is switching from a 21-day regimen of tablets, she should wait 7 days after her last tablet before she starts levonorgestrel and ethinyl estradiol tablets. She will probably experience withdrawal bleeding during that week. She should be sure that no more than 7 days pass after her previous 21-day regimen. When the patient is switching from a 28-day regimen of tablets, she should start her first pack of levonorgestrel and ethinyl estradiol tablets on the day after her last tablet. She should not wait any days between packs. The patient may switch any day from a progestin only pill and should begin levonorgestrel and ethinyl estradiol tablets the next day. If switching from an implant or injection, the patient should start levonorgestrel and ethinyl estradiol tablets on the day of implant removal or, if using an injection, the day the next injection would be due. In switching from a progestin-only pill, injection, or implant, the patient should be advised to use a nonhormonal back-up method of birth control for the first 7 days of tablet-taking.

If spotting or breakthrough bleeding occurs

If spotting or breakthrough bleeding occur, the patient is instructed to continue on the same regimen. This type of bleeding is usually transient and without significance; however, if the bleeding is persistent or prolonged, the patient is advised to consult her physician.

Risk of pregnancy if tablets are missed

While there is little likelihood of ovulation occurring if only one or two white tablets are missed, the possibility of ovulation increases with each successive day that scheduled white tablets are missed. Although the occurrence of pregnancy is unlikely if levonorgestrel and ethinyl estradiol tablets are taken according to directions, if withdrawal bleeding does not occur, the possibility of pregnancy must be considered. If the patient has not adhered to the prescribed schedule (missed one or more tablets or

started taking them on a day later than she should have), the probability of pregnancy should be considered at the time of the first missed period and appropriate diagnostic measures taken. If the patient has adhered to the prescribed regimen and misses two consecutive periods, pregnancy should be ruled out.

The risk of pregnancy increases with each active (white) tablet missed. For additional patient instructions regarding missed tablets, see the “ **WHAT TO DO IF YOU MISS PILLS**” section in the **DETAILED PATIENT LABELING** below.

Use after pregnancy, abortion or miscarriage

Levonorgestrel and ethinyl estradiol tablets may be initiated no earlier than day 28 postpartum in the nonlactating mother or after a second trimester abortion due to the increased risk for thromboembolism (see **CONTRAINDICATIONS, WARNINGS, and PRECAUTIONS** concerning thromboembolic disease). The patient should be advised to use a non-hormonal back-up method for the first 7 days of tablet taking.

Levonorgestrel and ethinyl estradiol tablets may be initiated immediately after a first trimester abortion or miscarriage. If the patient starts levonorgestrel and ethinyl estradiol tablets immediately, back-up contraception is not needed

HOW SUPPLIED

Levonorgestrel and ethinyl estradiol tablets USP 0.1 mg/0.02 mg are available in a blister pack (NDC 79929-004-05) containing 28 tablets, as follows:

21 active tablets: white to off-white, round, flat faced beveled edge, uncoated tablets debossed with ‘EH1’ on one side and plain on other side (0.1 mg levonorgestrel USP and 0.02 mg ethinyl estradiol USP)

7 inert tablets: peach color, round, flat faced beveled edge, uncoated tablets debossed with "EH2" on one side and plain on other side, tablets may have mottled appearance on either of the surface.

The blister packs are available in box of 3.

Store at 20° to 25°C (68° to 77°F) [See USP Controlled Room Temperature].

®The brands listed are trademarks of their respective owners.

Manufactured For:

Naari Pte Limited

36 Robinson Road, #13-06

City House, Singapore 068877

Issued December 2021

Levonorgestrel and Ethinyl Estradiol Tablets

Brief Summary Patient Package Insert

This product (like all oral-contraceptives) is intended to prevent pregnancy.

Oral-contraceptives do not protect against transmission of HIV (AIDS) and other sexually transmitted diseases (STDs) such as chlamydia, genital herpes, genital warts, gonorrhea, hepatitis B, and syphilis.

Oral-contraceptives, also known as “birth-control pills” or “the pill,” are taken to prevent pregnancy, and when taken correctly, have a failure rate of approximately 1.0% per year (1 pregnancy per 100 women per year of use) when used without missing any pills. The average failure rate of large numbers of pill users is approximately 5% per year (5 pregnancies per 100 women per year of use) when women who miss pills are included.

For most women oral-contraceptives are also free of serious or unpleasant side effects. However, forgetting to take pills considerably increases the chances of pregnancy.

For the majority of women, oral-contraceptives can be taken safely. But there are some women who are at high risk of developing certain serious diseases that can be life-threatening or may cause temporary or permanent disability or death. The risks associated with taking oral-contraceptives increase significantly if you:

- smoke
- have high blood pressure, diabetes, high cholesterol, or a tendency to form blood clots.
- have or have had clotting disorders, heart attack, stroke, angina pectoris, cancer of the breast or sex organs, jaundice, malignant or benign liver tumors, or major surgery with prolonged immobilization.
- have headaches with neurological symptoms.

You should not take the pill if you take any Hepatitis C drug combination containing ombitasvir/paritaprevir/ritonavir, with or without dasabuvir. This may increase levels of the liver enzyme “alanine aminotransferase” (ALT) in the blood.

You should not take the pill if you suspect you are pregnant or have unexplained vaginal bleeding.

Although cardiovascular disease risks may be increased with oral-contraceptive use after age 40 in healthy, nonsmoking women, there are also greater potential health risks associated with pregnancy in older women.

Cigarette smoking increases the risk of serious adverse effects on the heart and blood vessels from oral-contraceptive use. This risk increases with age and with the amount of smoking (15 or more cigarettes per day has been associated with a significantly increased risk) and is quite marked in women over 35 years of age. Women who use oral-contraceptives should not smoke.

Most side effects of the pill are not serious. The most common such effects are nausea, vomiting, bleeding between menstrual periods, weight gain, breast tenderness, and difficulty wearing contact lenses. These side effects, especially nausea and vomiting, may subside within the first three months of use.

The serious side effects of the pill occur very infrequently, especially if you are in good health and do not smoke. However, you should know that the following medical conditions have been associated with or made worse by the pill:

1. Blood clots in the legs (thrombophlebitis) and lungs (pulmonary embolism), blockage or rupture of a blood vessel in the brain (stroke), blockage of blood vessels in the heart (heart attack and angina pectoris) or other organs of the body. As mentioned above, smoking increases the risk of heart attacks and strokes and subsequent serious medical consequences. Women with migraine also may be at increased risk of stroke with pill use.

2. Liver tumors, which may rupture and cause severe bleeding. A possible but not definite association has been found with the pill and liver cancer. However, liver cancers are extremely rare. The chance of developing liver cancer from using the pill is thus even rarer.

3. High blood pressure, although blood pressure usually returns to normal when the pill is stopped.

The symptoms associated with these serious side effects are discussed in the detailed leaflet given to you with your supply of pills. Notify your health-care provider if you notice any unusual physical disturbances while taking the pill. In addition, drugs such as rifampin, as well as some anticonvulsants and some antibiotics, herbal preparations containing St. John's Wort (*Hypericum perforatum*), and HIV/AIDS drugs may decrease oral-contraceptive effectiveness.

There may be slight increases in the risk of breast cancer among current users of hormonal birth control pills with longer duration of use of 8 years or more.

Some studies have found an increase in the incidence of cancer of the cervix in women who use oral-contraceptives. However, this finding may be related to factors other than the use of oral-contraceptives.

Taking the pill provides some important noncontraceptive benefits. These include less painful menstruation, less menstrual blood loss and anemia, fewer pelvic infections, and fewer cancers of the ovary and the lining of the uterus.

Be sure to discuss any medical condition you may have with your healthcare provider. Your health-care provider will take a medical and family history before prescribing oral-contraceptives and will examine you. The physical examination may be delayed to another time if you request it and the health-care provider believes that it is appropriate to postpone it. You should be reexamined at least once a year while taking oral-contraceptives. The detailed patient information leaflet gives you further information which you should read and discuss with your health-care provider.

HOW TO TAKE LEVONORGESTREL AND ETHINYL ESTRADIOL TABLETS

IMPORTANT POINTS TO REMEMBER

BEFORE YOU START TAKING LEVONORGESTREL AND ETHINYL ESTRADIOL TABLETS:

1. BE SURE TO READ THESE DIRECTIONS:

Before you start taking levonorgestrel and ethinyl estradiol tablets.

And

Anytime you are not sure what to do.

2. THE RIGHT WAY TO TAKE THE PILL IS TO TAKE ONE PILL EVERY DAY AT THE SAME

TIME.

If you miss pills you could get pregnant. This includes starting the pack late. The more pills you miss, the more likely you are to get pregnant. See “WHAT TO DO IF YOU MISS PILLS” below.

3. MANY WOMEN HAVE SPOTTING OR LIGHT BLEEDING, OR MAY FEEL SICK TO THEIR STOMACH DURING THE FIRST 1 to 3 PACKS OF PILLS. If you feel sick to your stomach, do not stop taking levonorgestrel and ethinyl estradiol tablets. The problem will usually go away. If it doesn't go away, check with your health-care provider.

4. MISSING PILLS CAN ALSO CAUSE SPOTTING OR LIGHT BLEEDING, even when you make up these missed pills.

On the days you take 2 pills to make up for missed pills, you could also feel a little sick to your stomach.

5. IF YOU HAVE VOMITING (within 4 hours after you take your pill), you should follow the instructions for WHAT TO DO IF YOU MISS PILLS. IF YOU HAVE DIARRHEA or IF YOU TAKE SOME MEDICINES, including some antibiotics, your pills may not work as well. Use a back-up nonhormonal method (such as condoms or spermicide) until you check with your health-care provider.

6. IF YOU HAVE TROUBLE REMEMBERING TO TAKE THE PILL, talk to your health-care provider about how to make pill-taking easier or about using another method of birth control.

7. IF YOU HAVE ANY QUESTIONS OR ARE UNSURE ABOUT THE INFORMATION IN THIS LEAFLET, call your health-care provider.

BEFORE YOU START TAKING LEVONORGESTREL AND ETHINYL ESTRADIOL TABLETS

1. DECIDE WHAT TIME OF DAY YOU WANT TO TAKE YOUR PILL. It is important to take it at about the same time every day.

2. LOOK AT YOUR PILL PACK

The pill pack has 21 “active” white pills (with hormones) to take for 3 weeks, followed by 1 week of reminder peach pills (without hormones).

3. FIND:

1. where on the pack to start taking pills, and
2. in what order to take the pills (follow the arrow).

NDC 79929-004-05

28 Tablet Blister Card

Levonorgestrel and Ethinyl Estradiol Tablets USP

0.1 mg/0.02 mg

Naari Pte Ltd.
Made in India

	SUN	MON	TUE	WED	THU	FRI	SAT	LOT:
START →	○	○	○	○	○	○	○	EXP:
WEEK 2 →	○	○	○	○	○	○	○	
WEEK 3 →	○	○	○	○	○	○	○	
WEEK 4 →	○	○	○	○	○	○	○	

Store at controlled room temperature 20°C to 25°C (68°F to 77°F).
Keep out of reach of children.

Refer Image

4. BE SURE YOU HAVE READY AT ALL TIMES:

ANOTHER KIND OF BIRTH CONTROL (such as condoms or spermicide) to use as a back-up in case you miss pills.

AN EXTRA, FULL PILL PACK.

WHEN TO START THE *FIRST* PACK OF PILLS

You have a choice of which day to start taking your first pack of pills.

Decide with your health-care provider which is the best day for you. Pick a time of day which will be easy to remember.

DAY 1 START:

1. Take the first “active” white pill of the first pack during the *first 24 hours of your period*.

2. You will not need to use a back-up nonhormonal method of birth control, since you are starting the pill at the beginning of your period.

SUNDAY START:

1. Take the first “active” white pill of the first pack on the *Sunday after your period starts*, even if you are still bleeding. If your period begins on Sunday, start the pack that same day.

2. Use a *nonhormonal method of birth control (such as condoms or spermicide)* as a backup method if you have sex anytime from the Sunday you start your first pack until

the next Sunday (7 days).

WHAT TO DO DURING THE MONTH

1. Take one pill at the same time every day until the pack is empty.

Do not skip pills even if you are spotting or bleeding between monthly periods or feel sick to your stomach (nausea).

Do not skip pills even if you do not have sex very often.

2. When you finish a pack:

Start the next pack on the day after your last “reminder” pill. Do not wait any days between packs.

IF YOU SWITCH FROM ANOTHER BRAND OF COMBINATION PILLS

If your previous brand had 21 pills: Wait 7 days to start taking levonorgestrel and ethinyl estradiol tablets. You will probably have your period during that week. Be sure that no more than 7 days pass between the 21-day pack and taking the first white levonorgestrel and ethinyl estradiol tablets pill (“active” with hormone).

If your previous brand had 28 pills: Start taking the first white levonorgestrel and ethinyl estradiol tablets pill (“active” with hormone) on the day after your last reminder pill. Do not wait any days between packs.

WHAT TO DO IF YOU MISS PILLS

Levonorgestrel and ethinyl estradiol tablets may not be as effective if you miss white “active” pills, and particularly if you miss the first few or the last few white “active” pills in a pack.

If you **MISS 1** white “active” pill:

1. Take it as soon as you remember. Take the next pill at your regular time. This means you may take 2 pills in 1 day.

2. You **COULD BECOME PREGNANT** if you have sex in the 7 *days* after you restart your pills. You **MUST** use a nonhormonal birth-control method (such as condoms or spermicide) as a back-up for those 7 days.

If you **MISS 2** white “active” pills in a row in **WEEK 1 OR WEEK 2** of your pack:

1. Take 2 pills on the day you remember and 2 pills the next day.

2. Then take 1 pill a day until you finish the pack.

3. You **COULD BECOME PREGNANT** if you have sex in the 7 *days* after you restart your pills. You **MUST** use a nonhormonal birth-control method (such as condoms or spermicide) as a back-up for those 7 days.

If you **MISS 2** white “active” pills in a row in **THE 3rd WEEK:1. If you are a Day 1**

Starter: THROW OUT the rest of the pill pack and start a new pack that same day.

If you are a Sunday Starter: Keep taking 1 pill every day until Sunday.

On Sunday, THROW OUT the rest of the pack and start a new pack of pills that same day.

2. You may not have your period this month but this is expected. However, if you miss your period 2 months in a row, call your health-care provider because you might be pregnant.

3. You COULD BECOME PREGNANT if you have sex in the 7 *days* after you restart your pills. You MUST use a nonhormonal birth-control method (such as condoms or spermicide) as a back-up for those 7 days.

If you **MISS 3 OR MORE** white “active” pills in a row (during the first 3 weeks):

1. **If you are a Day 1 Starter:** THROW OUT the rest of the pill pack and start a new pack that same day.

If you are a Sunday Starter: Keep taking 1 pill every day until Sunday.

On Sunday, THROW OUT the rest of the pack and start a new pack of pills that same day.

2. You may not have your period this month but this is expected.

However, if you miss your period 2 months in a row, call your health-care provider because you might be pregnant.

3. You COULD BECOME PREGNANT if you have sex in the 7 *days* after you restart your pills. You MUST use a nonhormonal birthcontrol method (such as condoms or spermicide) as a back-up for those 7 days.

If you forget any of the 7 peach “reminder” pills in Week 4:

THROW AWAY the pills you missed.

Keep taking 1 pill each day until the pack is empty.

You do not need a back-up nonhormonal birth-control method if you start your next pack on time.

FINALLY, IF YOU ARE STILL NOT SURE WHAT TO DO ABOUT THE PILLS YOU HAVE MISSED

Use a BACK-UP NONHORMONAL BIRTH-CONTROL METHOD anytime you have sex.

KEEP TAKING ONE PILL EACH DAY until you can reach your health-care provider.

BIRTH CONTROL AFTER STOPPING THE PILL

If you do not wish to become pregnant after stopping the pill, speak to your health-care provider about another method of birth control.

Manufactured For:

Naari Pte Limited

36 Robinson Road, #13-06

City House, Singapore 068877

Issued December 2021

Levonorgestrel and Ethinyl Estradiol Tablets

DETAILED PATIENT LABELING

This product (like all oral-contraceptives) is intended to prevent pregnancy. Oral-contraceptives do not protect against transmission of HIV (AIDS) and other sexually transmitted diseases (STDs) such as chlamydia, genital herpes, genital warts, gonorrhea, hepatitis B, and syphilis.

INTRODUCTION

Any woman who considers using oral-contraceptives (the “birth-control pill” or “the pill”) should understand the benefits and risks of using this form of birth control. This leaflet will give you much of the information you will need to make this decision and will also help you determine if you are at risk of developing any of the serious side effects of the pill. It will tell you how to use the pill properly so that it will be as effective as possible. However, this leaflet is not a replacement for a careful discussion between you and your health-care provider. You should discuss the information provided in this leaflet with him or her, both when you first start taking the pill and during your revisits. You should also follow your health-care provider's advice with regard to regular check-ups while you are on the pill.

EFFECTIVENESS OF ORAL-CONTRACEPTIVES

Oral-contraceptives or “birth-control pills” or “the pill” are used to prevent pregnancy and are more effective than most other nonsurgical methods of birth control. When they are taken correctly, without missing any pills, the chance of becoming pregnant is approximately 1% per year (1 pregnancy per 100 women per year of use). Typical failure rates are approximately 5% per year (5 pregnancies per 100 women per year of use) when women who miss pills are included. The chance of becoming pregnant increases with each missed pill during each 28-day cycle of use.

In comparison, average failure rates for other methods of birth control during the first year of use are as follows:

IUD:0.1-2%	Female condom alone: 21%
Depo-Provera [®] (injectable progestogen):0.3%	Cervical cap
Norplant [®] System (levonorgestrel implants): 0.05%	Never given birth: 20%
Diaphragm with spermicides: 20%	Given birth: 40%
Spermicides alone: 26%	Periodic abstinence: 25%
Male condom alone: 14%	No methods: 85%

WHO SHOULD NOT TAKE ORAL-CONTRACEPTIVES

Cigarette smoking increases the risk of serious adverse effects on the heart and blood vessels from oral-contraceptive use. This risk increases with age and with the amount of smoking (15 or more cigarettes per day has been associated with a significantly increased risk) and is quite marked in women over 35 years of age. Women who use oral-contraceptives should not smoke.

Some women should not use the pill. For example, you should not take the pill if you have any of the following conditions:

- History of heart attack or stroke.
- Blood clots in the legs (thrombophlebitis), lungs (pulmonary embolism), or eyes.
- A history of blood clots in the deep veins of your legs.
- Chest pain (angina pectoris).
- Known or suspected breast cancer or cancer of the lining of the uterus, cervix or vagina, or certain hormonally-sensitive cancers.
- Unexplained vaginal bleeding (until a diagnosis is reached by your health-care provider).
- Liver tumor (benign or cancerous) or active liver disease.
- Yellowing of the whites of the eyes or of the skin (jaundice) during pregnancy or during previous use of the pill.
- Known or suspected pregnancy.
- A need for surgery with prolonged bedrest.
- Heart valve or heart rhythm disorders that may be associated with formation of blood clots.
- Diabetes affecting your circulation.
- Headaches with neurological symptoms.
- Uncontrolled high blood pressure.
- Allergy or hypersensitivity to any of the components of levonorgestrel and ethinyl estradiol tablets.

Tell your health-care provider if you have had any of these conditions. Your health-care provider can recommend another method of birth control.

You should not take the pill if you take any Hepatitis C drug combination containing ombitasvir/paritaprevir/ritonavir, with or without dasabuvir. This may increase levels of the liver enzyme “alanine aminotransferase” (ALT) in the blood.

OTHER CONSIDERATIONS BEFORE TAKING ORAL-CONTRACEPTIVES

Tell your health-care provider if you or any family member has ever had:

- Breast nodules, fibrocystic disease of the breast, an abnormal breast X-ray or mammogram.

- Diabetes
- Elevated cholesterol or triglycerides
- High blood pressure
- A tendency to form blood clots.
- Migraine or other headaches or epilepsy
- Depression
- Gallbladder, liver, heart, or kidney disease
- History of scanty or irregular menstrual periods

Women with any of these conditions should be checked often by their health-care provider if they choose to use oral-contraceptives. Also, be sure to inform your health-care provider if you smoke or are on any medications.

Although cardiovascular disease risks may be increased with oral-contraceptive use in healthy, non-smoking women over 40 (even with the newer low-dose formulations), there are also greater potential health risks associated with pregnancy in older women.

RISKS OF TAKING ORAL-CONTRACEPTIVES

1. Risks of developing blood clots

Blood clots and blockage of blood vessels are the most serious side effects of taking oral-contraceptives and can cause death or serious disability. In particular, a clot in the legs can cause thrombophlebitis and a clot that travels to the lungs can cause a sudden blocking of the vessel carrying blood to the lungs. Rarely, clots occur in the blood vessels of the eye and may cause blindness, double vision, or impaired vision.

Users of combination oral-contraceptives have a higher risk of developing blood clots compared to non-users. This risk is highest during the first year of combination oral-contraceptive use.

If you take oral-contraceptives and need elective surgery, need to stay in bed for a prolonged illness or injury, or have recently delivered a baby, you may be at risk of developing blood clots. You should consult your healthcare provider about stopping oral-contraceptives three to four weeks before surgery and not taking oral-contraceptives for two weeks after surgery or during bed rest. You should also not take oral-contraceptives soon after delivery of a baby or after a midtrimester pregnancy termination. It is advisable to wait for at least four weeks after delivery if you are not breastfeeding. If you are breast-feeding, you should wait until you have weaned your child before using the pill. (See also the section *While breast-feeding* in **GENERAL PRECAUTIONS**.)

The risk of blood clots is greater in users of combination oral-contraceptives compared to nonusers. This risk may be higher in users of high-dose pills (those containing 50 mcg or more of estrogen) and may also be greater with longer use. In addition, some of these increased risks may continue for a number of years after stopping combination oral-contraceptives. The risk of abnormal blood clotting increases with age in both users and nonusers of combination oral-contraceptives, but the increased risk from the oral contraceptive appears to be present at all ages.

The excess risk of blood clots is highest during the first year a woman ever uses a combined oral-contraceptive. This increased risk is lower than blood clots associated with pregnancy. The use of combination oral-contraceptives also increases the risk of other clotting disorders, including heart attack and stroke. Blood clots in veins cause death in 1% to 2% of cases. The risk of clotting is further increased in women with other conditions.

Examples include: smoking, high blood pressure, abnormal lipid levels, certain inherited or acquired clotting disorders, obesity, surgery or injury, recent delivery or second trimester abortion, prolonged inactivity or bed rest. If possible, combination oral-contraceptives should be stopped before surgery and during prolonged inactivity or bed rest.

Cigarette smoking increases the risk of serious cardiovascular events. This risk increases with age and amount of smoking and is quite pronounced in women over 35. Women who use combination oral-contraceptives should be strongly advised not to smoke. If you smoke you should talk to your health care professional before taking combination oral-contraceptives.

2. Heart attacks and strokes

Oral-contraceptives may increase the tendency to develop strokes or transient ischemic attacks (blockage or rupture of blood vessels in the brain) and angina pectoris and heart attacks (blockage of blood vessels in the heart). Any of these conditions can cause death or serious disability.

Smoking greatly increases the possibility of suffering heart attacks and strokes. Furthermore, smoking and the use of oral-contraceptives greatly increase the chances of developing and dying of heart disease.

Women with migraine (especially migraine/headache with neurological symptoms) who take oral-contraceptives also may be at higher risk of stroke and must not use combination oral-contraceptives (see section WHO SHOULD NOT TAKE ORAL-CONTRACEPTIVES).

3. Gallbladder disease

Oral-contraceptive users probably have a greater risk than nonusers of having gallbladder disease, although this risk may be related to pills containing high doses of estrogens. Oral-contraceptives may worsen existing gallbladder disease or accelerate the development of gallbladder disease in women previously without symptoms.

4. Liver tumors

In rare cases, oral-contraceptives can cause benign but dangerous liver tumors. These benign liver tumors can rupture and cause fatal internal bleeding. In addition, a possible but not definite association has been found with the pill and liver cancers in two studies in which a few women who developed these very rare cancers were found to have used oral-contraceptives for long periods. However, liver cancers are extremely rare. The chance of developing liver cancer from using the pill is thus even rarer.

5. Risk of Cancer

It is not known if hormonal birth control pills causes breast cancer. Some studies, but

not all, suggest that there could be a slight increase in the risk of breast cancer among current users with longer duration of use.

If you have breast cancer now, or have had it in the past, do not use hormonal birth control because some breast cancers are sensitive to hormones.

Cervical Cancer

Some studies have found an increase in the incidence of cancer of the cervix in women who use oral contraceptives. However, this finding may be related to factors other than the use of oral contraceptives.

6. Lipid Metabolism and Pancreatitis

There have been reports of increases of blood cholesterol and triglycerides in users of combination oral-contraceptives. Increases in triglycerides have led to inflammation of the pancreas (pancreatitis) in some cases.

ESTIMATED RISK OF DEATH FROM A BIRTH-CONTROL METHOD OR PREGNANCY

All methods of birth control and pregnancy are associated with a risk of developing certain diseases which may lead to disability or death. An estimate of the number of deaths associated with different methods of birth control and pregnancy has been calculated and is shown in the following table.

ANNUAL NUMBER OF BIRTH-RELATED OR METHOD-RELATED DEATHS ASSOCIATED WITH CONTROL OF FERTILITY PER 100,000 NONSTERILE WOMEN, BY FERTILITY-CONTROL METHOD AND ACCORDING TO AGE

Method of control and outcome	15 to 19	20 to 24	25 to 29	30 to 34	35 to 39	40 to 44
No fertility-control methods *	7.0	7.4	9.1	14.8	25.7	28.2
Oral-contraceptives non-smoker †	0.3	0.5	0.9	1.9	13.8	31.6
Oral-contraceptives smoker †	2.2	3.4	6.6	13.5	51.1	117.2
IUD †	0.8	0.8	1.0	1.0	1.4	1.4
Condom *	1.1	1.6	0.7	0.2	0.3	0.4
Diaphragm/spermicide *	1.9	1.2	1.2	1.3	2.2	2.8
Periodic abstinence *	2.5	1.6	1.6	1.7	2.9	3.6

* Deaths are birth related

† Deaths are method related

In the above table, the risk of death from any birth-control method is less than the risk of childbirth, except for oral-contraceptive users over the age of 35 who smoke and pill users over the age of 40 even if they do not smoke. It can be seen in the table that for women aged 15 to 39, the risk of death was highest with pregnancy (7 to 26 deaths per 100,000 women, depending on age). Among pill users who do not smoke, the risk of death was always lower than that associated with pregnancy for any age group, except

for those women over the age of 40, when the risk increases to 32 deaths per 100,000 women, compared to 28 associated with pregnancy at that age. However, for pill users who smoke and are over the age of 35, the estimated number of deaths exceeds those for other methods of birth control. If a woman is over the age of 40 and smokes, her estimated risk of death is four times higher (117/100,000 women) than the estimated risk associated with pregnancy (28/100,000 women) in that age group

The suggestion that women over 40 who do not smoke should not take oral-contraceptives is based on information from older high-dose pills. An Advisory Committee of the FDA discussed this issue in 1989 and recommended that the benefits of oral-contraceptive use by healthy, nonsmoking women over 40 years of age may outweigh the possible risks. Older women, as all women, who take oral-contraceptives, should take an oral-contraceptive which contains the least amount of estrogen and progesterone that is compatible with the individual patient needs.

WARNING SIGNALS

If any of these adverse effects occur while you are taking oral-contraceptives, call your healthcare provider immediately:

- Sharp chest pain, coughing of blood, or sudden shortness of breath (indicating a possible clot in the lung)
- Pain in the calf (indicating a possible clot in the leg)
- Crushing chest pain or heaviness in the chest (indicating a possible heart attack)
- Sudden severe headache or vomiting, dizziness or fainting, disturbances of vision or speech, weakness, or numbness in an arm or leg (indicating a possible stroke)
- Sudden partial or complete loss of vision (indicating a possible clot in the eye)
- Breast lumps (indicating possible breast cancer or fibrocystic disease of the breast; ask your health-care provider to show you how to examine your breasts)
- Severe pain or tenderness in the stomach area (indicating a possibly ruptured liver tumor).
- Difficulty in sleeping, weakness, lack of energy, fatigue, or change in mood (possibly indicating severe depression)
- Jaundice or a yellowing of the skin or eyeballs, accompanied frequently by fever, fatigue, loss of appetite, dark-colored urine, or light-colored bowel movements (indicating possible liver problems)

SIDE EFFECTS OF ORAL-CONTRACEPTIVES

1. Unscheduled or breakthrough vaginal bleeding or spotting

Unscheduled vaginal bleeding or spotting may occur while you are taking the pills. Unscheduled bleeding may vary from slight staining between menstrual periods to breakthrough bleeding which is a flow much like a regular period. Unscheduled bleeding occurs most often during the first few months of oral-contraceptive use, but may also occur after you have been taking the pill for some time. Such bleeding may be temporary and usually does not indicate any serious problems. It is important to continue taking your pills on schedule. If the bleeding occurs in more than one cycle or lasts for more than a few days, talk to your health-care provider.

2. Contact lenses

If you wear contact lenses and notice a change in vision or an inability to wear your lenses, contact your health-care provider.

3. Fluid retention

Oral-contraceptives may cause edema (fluid retention) with swelling of the fingers or

ankles and may raise your blood pressure. If you experience fluid retention, contact your health-care provider.

4. *Melasma*

A spotty darkening of the skin is possible, particularly of the face.

5. *Other side effects*

Other side effects may include nausea, breast tenderness, change in appetite, headache, nervousness, depression, dizziness, loss of scalp hair, rash, vaginal infections, inflammation of the pancreas, and allergic reactions.

If any of these side effects bother you, call your health-care provider.

GENERAL PRECAUTIONS

1. *Missed periods and use of oral-contraceptives before or during early pregnancy*

There may be times when you may not menstruate regularly after you have completed taking a cycle of pills. If you have taken your pills regularly and miss one menstrual period, continue taking your pills for the next cycle but be sure to inform your health-care provider before doing so. If you have not taken the pills daily as instructed and missed a menstrual period, or if you missed two consecutive menstrual periods, you may be pregnant.

Check with your health-care provider immediately to determine whether you are pregnant. Stop taking oral-contraceptives if you are pregnant. There is no conclusive evidence that oral-contraceptive use is associated with an increase in birth defects, when taken inadvertently during early pregnancy. Previously, a few studies had reported that oral-contraceptives might be associated with birth defects, but these studies have not been confirmed. Nevertheless, oral-contraceptives should not be used during pregnancy. You should check with your health-care provider about risks to your unborn child of any medication taken during pregnancy.

2. *While breast-feeding*

If you are breast-feeding, consult your health-care provider before starting oral-contraceptives. Some of the drug will be passed on to the child in the milk. A few adverse effects on the child have been reported, including yellowing of the skin (jaundice) and breast enlargement. In addition, oral-contraceptives may decrease the amount and quality of your milk. If possible, do not use oral-contraceptives while breast-feeding. You should use another method of contraception since breast-feeding provides only partial protection from becoming pregnant and this partial protection decreases significantly as you breast-feed for longer periods of time. You should consider starting oral-contraceptives only after you have weaned your child completely.

3. *Laboratory tests*

If you are scheduled for any laboratory tests, tell your doctor you are taking birth-control pills. Certain blood tests may be affected by birth-control pills.

4. *Drug interactions*

Certain drugs may interact with birth-control pills to make them less effective in preventing pregnancy or cause an increase in breakthrough bleeding. Such drugs include rifampin, drugs used for epilepsy such as barbiturates (for example, phenobarbital) and phenytoin (Dilantin[®] is one brand of this drug), primidone (Mysoline[®]), topiramate (Topamax[®]), carbamazepine (Tegretol[®] is one brand of this drug), phenylbutazone (Butazolidin[®] is one brand), some drugs used for HIV or AIDS such as

ritonavir (Norvir[®]), modafinil (Provigil[®]) and possibly certain antibiotics (such as ampicillin and other penicillins, and tetracyclines), and herbal products containing St. John's Wort (*Hypericum perforatum*). You may also need to use a nonhormonal method of contraception during any cycle in which you take drugs that can make oral-contraceptives less effective.

You may be at higher risk of a specific type of liver dysfunction if you take troleandomycin and oral-contraceptives at the same time.

You should inform your health-care provider about all medicines you are taking, including nonprescription products.

5. Sexually transmitted diseases

This product (like all oral-contraceptives) is intended to prevent pregnancy. It does not protect against transmission of HIV (AIDS) and other sexually transmitted diseases such as chlamydia, genital herpes, genital warts, gonorrhea, hepatitis B, and syphilis.

HOW TO TAKE LEVONORGESTREL AND ETHINYL ESTRADIOL TABLETS

IMPORTANT POINTS TO REMEMBER

BEFORE YOU START TAKING LEVONORGESTREL AND ETHINYL ESTRADIOL TABLETS

1. BE SURE TO READ THESE DIRECTIONS:

Before you start taking levonorgestrel and ethinyl estradiol tablets.

And

Anytime you are not sure what to do.

2. THE RIGHT WAY TO TAKE THE PILL IS TO TAKE ONE PILL EVERY DAY AT THE SAME TIME.

If you miss pills you could get pregnant. This includes starting the pack late. The more pills you miss, the more likely you are to get pregnant. See "WHAT TO DO IF YOU MISS PILLS" below.

3. MANY WOMEN HAVE SPOTTING OR LIGHT BLEEDING, OR MAY FEEL SICK TO THEIR STOMACH DURING THE FIRST 1 to 3 PACKS OF PILLS.

If you feel sick to your stomach, do not stop taking levonorgestrel and ethinyl estradiol tablets. The problem will usually go away. If it doesn't go away, check with your health-care provider.

4. MISSING PILLS CAN ALSO CAUSE SPOTTING OR LIGHT BLEEDING, even when you make up these missed pills.

On the days you take 2 pills to make up for missed pills, you could also feel a little sick to your stomach.

5. IF YOU HAVE VOMITING (within 4 hours after you take your pill), you should follow the instructions for **WHAT TO DO IF YOU MISS PILLS**. **IF YOU HAVE DIARRHEA** or **IF YOU TAKE SOME MEDICINES**, including some antibiotics, your pills may not work as well. Use a back-up nonhormonal method (such as condoms or spermicide) until you check with your health-care provider.

6. IF YOU HAVE TROUBLE REMEMBERING TO TAKE THE PILL, talk to your health-care provider about how to make pill-taking easier or about using another method of birth control.

7. IF YOU HAVE ANY QUESTIONS OR ARE UNSURE ABOUT THE INFORMATION IN THIS LEAFLET, contact your health-care provider.

BEFORE YOU START TAKING LEVONORGESTREL AND ETHINYL ESTRADIOL TABLETS

1. DECIDE WHAT TIME OF DAY YOU WANT TO TAKE YOUR PILL. It is important to take it at about the same time every day.

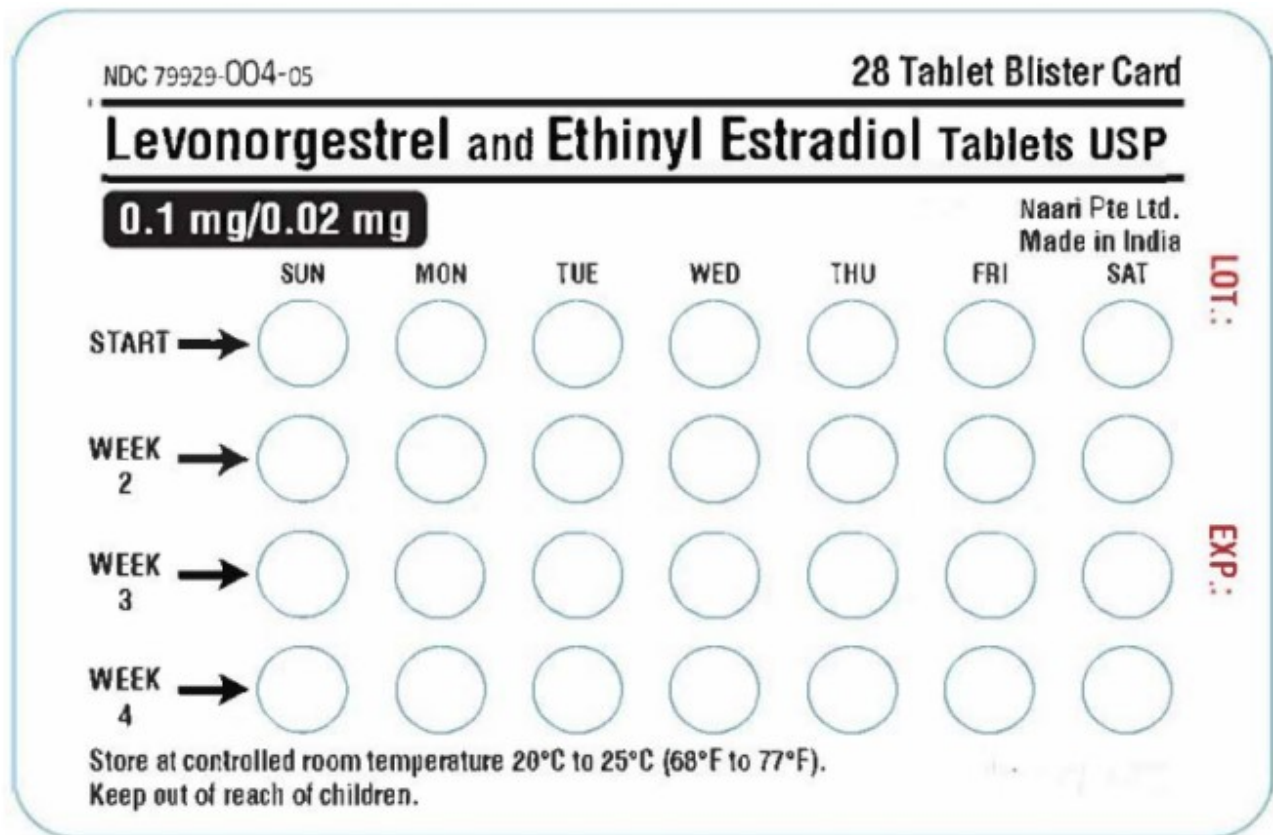
2. LOOK AT YOUR PILL PACK

The pill pack has 21 “active” white pills (with hormones) to take for 3 weeks, followed by 1 week of reminder peach pills (without hormones).

3. FIND:

1 where on the pack to start taking pills, and

2 in what order to take the pills.(follow the arrows).



4. BE SURE YOU HAVE READY AT ALL TIMES:

ANOTHER KIND OF BIRTH CONTROL (such as condoms or spermicide) to use as a back-up in case you miss pills.

AN EXTRA, FULL PILL PACK.

WHEN TO START THE *FIRST* PACK OF PILLS

You have a choice of which day to start taking your first pack of pills.

Decide with your health-care provider which is the best day for you. Pick a time of day which will be easy to remember.

DAY 1 START:

1. Take the first “active” white pill of the first pack during the *first 24 hours of your period*.
2. You will not need to use a back-up nonhormonal method of birth control, since you are starting the pill at the beginning of your period.

SUNDAY START:

1. Take the first “active” white pill of the first pack on the *Sunday after your period starts*, even if you are still bleeding. If your period begins on Sunday, start the pack that same day.
2. *Use a nonhormonal method of birth control* (such as condoms or spermicide) as a back-up method if you have sex anytime from the Sunday you start your first pack until the next Sunday (7 days).

WHAT TO DO DURING THE MONTH

1. Take one pill at the same time every day until the pack is empty.

Do not skip pills even if you are spotting or bleeding between monthly periods or feel sick to your stomach (nausea).

Do not skip pills even if you do not have sex very often.

2. When you finish a pack:

Start the next pack on the day after your last “reminder” pill. Do not wait any days between packs.

IF YOU SWITCH FROM ANOTHER BRAND OF COMBINATION PILLS:

If your previous brand had 21 pills: Wait 7 days to start taking levonorgestrel and ethinyl estradiol tablets. You will probably have your period during that week. Be sure that no more than 7 days pass between the 21-day pack and taking the first white levonorgestrel and ethinyl estradiol tablets pill (“active” with hormone).

If your previous brand had 28 pills: Start taking the first white levonorgestrel and ethinyl estradiol tablets pill (“active” with hormone) on the day after your last reminder pill. Do not wait any days between packs.

WHAT TO DO IF YOU MISS PILLS

Levonorgestrel and ethinyl estradiol tablets may not be as effective if you miss white “active” pills, and particularly if you miss the first few or the last few white “active” pills in a pack.

If you **MISS 1** white “active” pill:

1. Take it as soon as you remember. Take the next pill at your regular time. This means you may take 2 pills in 1 day. This means you may take 2 pills in 1 day.
2. You **COULD BECOME PREGNANT** if you have sex in the 7 days after you restart your pills. You **MUST** use a nonhormonal birth-control method (such as condoms or

spermicide) as a back-up for those 7 days.

If you **MISS 2** white “active” pills in a row in **WEEK 1 OR WEEK 2** of your pack:

1. Take 2 pills on the day you remember and 2 pills the next day.
2. Then take 1 pill a day until you finish the pack.
3. You **COULD BECOME PREGNANT** if you have sex in the 7 days after you restart your pills. You **MUST** use a nonhormonal birth-control method (such as condoms or spermicide) as a back-up for those 7 days.

If you **MISS 2** white “active” pills in a row in **THE 3rd WEEK:1. If you are a Day 1 Starter:**THROW OUT the rest of the pill pack and start a new pack that same day.

If you are a Sunday Starter:Keep taking 1 pill every day until Sunday.

On Sunday, THROW OUT the rest of the pack and start a new pack of pills that same day.

2. You may not have your period this month but this is expected.

However, if you miss your period 2 months in a row, call your health-care provider because you might be pregnant.

3. You **COULD BECOME PREGNANT** if you have sex in the 7 days after you restart your pills. You **MUST** use a nonhormonal birth-control method (such as condoms, or spermicide) as a back-up for those 7 days.

If you **MISS 3 OR MORE** white “active” pills in a row (during the first 3 weeks):

1. **If you are a Day 1 Starter:**THROW OUT the rest of the pill pack and start a new pack that same day.

If you are a Sunday Starter:Keep taking 1 pill every day until Sunday.

On Sunday, THROW OUT the rest of the pack and start a new pack of pills that same day.

2. You may not have your period this month but this is expected.

However, if you miss your period 2 months in a row, call your health-care provider because you might be pregnant.

3. You **COULD BECOME PREGNANT** if you have sex in the 7 days after you restart your pills. You **MUST** use a nonhormonal birth-control method (such as condoms, or spermicide) as a back-up for those 7 days.

If you forget any of the 7 peach “reminder” pills in Week 4:

THROW AWAY the pills you missed.

Keep taking 1 pill each day until the pack is empty

You do not need a back-up nonhormonal birth-control method if you start your next

pack on time.

FINALLY, IF YOU ARE STILL NOT SURE WHAT TO DO ABOUT THE PILLS YOU HAVE MISSED

Use a BACK-UP NONHORMONAL BIRTH-CONTROL METHOD anytime you have sex.

KEEP TAKING ONE PILL EACH DAY until you can reach your health-care provider.

PREGNANCY DUE TO PILL FAILURE

The incidence of pill failure resulting in pregnancy is approximately 1 per year (1 pregnancy per 100 women per year of use) if taken every day as directed, but the more typical failure rate is approximately 5% per year (5 pregnancies per 100 women per year of use) including women who do not always take the pill exactly as directed without missing any pills. If you do become pregnant, the risk to the fetus is minimal, but you should stop taking your pills and discuss the pregnancy with your health-care provider.

PREGNANCY AFTER STOPPING THE PILL

There may be some delay in becoming pregnant after you stop using oral-contraceptives, especially if you had irregular menstrual cycles before you used oral-contraceptives. It may be advisable to postpone conception until you begin menstruating regularly once you have stopped taking the pill and desire pregnancy.

There does not appear to be any increase in birth defects in newborn babies when pregnancy occurs soon after stopping the pill.

BIRTH CONTROL AFTER STOPPING THE PILL

If you do not wish to become pregnant after stopping the pill, you should use another method of birth control immediately after stopping levonorgestrel and ethinyl estradiol tablets. Speak to your health-care provider about another method of birth control

OVERDOSAGE

Overdosage may cause nausea, vomiting, breast tenderness, dizziness, abdominal pain and fatigue/drowsiness. Withdrawal bleeding may occur in females. In case of overdosage, contact your health-care provider or pharmacist.

OTHER INFORMATION

Your health-care provider will take a medical and family history before prescribing oral-contraceptives and will examine you. The physical examination may be delayed to another time if you request it and your health-care provider believes that it is appropriate to postpone it. You should be reexamined at least once a year. Be sure to inform your health-care provider if there is a family history of any of the conditions listed previously in this leaflet. Be sure to keep all appointments with your health-care provider, because this is a time to determine if there are early signs of side effects of oral-contraceptive use.

Do not use the drug for any condition other than the one for which it was prescribed. This drug has been prescribed specifically for you; do not give it to others who may want birth-control pills.

HEALTH BENEFITS FROM ORAL-CONTRACEPTIVES

In addition to preventing pregnancy, use of oral-contraceptives may provide certain

benefits.

They are:

- Menstrual cycles may become more regular
- Blood flow during menstruation may be lighter, and less iron may be lost. Therefore, anemia due to iron deficiency is less likely to occur
- Pain or other symptoms during menstruation may be encountered less frequently
- Ovarian cysts may occur less frequently
- Ectopic (tubal) pregnancy may occur less frequently
- Noncancerous cysts or lumps in the breast may occur less frequently
- Acute pelvic inflammatory disease may occur less frequently
- Oral-contraceptive use may provide some protection against developing two forms of cancer: cancer of the ovaries and cancer of the lining of the uterus

If you want more information about birth-control pills, ask your health-care provider or pharmacist. They have a more technical leaflet called the Professional Labeling which you may wish to read.

Manufactured For:

Naari Pte Limited

36 Robinson Road, #13-06

City House, Singapore 068877

Issued December 2021

PRINCIPAL DISPLAY PANEL



LEVONORGESTREL AND ETHINYL ESTRADIOL

levonorgestrel and ethinyl estradiol kit

Product Information

Product Type	HUMAN PRESCRIPTION DRUG	Item Code (Source)	NDC:79929-004
---------------------	-------------------------	---------------------------	---------------

Packaging

#	Item Code	Package Description	Marketing Start Date	Marketing End Date
1	NDC:79929-004-07	3 in 1 CARTON	05/31/2024	
1		1 in 1 BLISTER PACK		

Quantity of Parts

Part #	Package Quantity	Total Product Quantity
Part 1		21
Part 2		7

Part 1 of 2

LEVONORGESTREL AND ETHINYL ESTRADIOL

levonorgestrel and ethinyl estradiol tablet

Product Information

Item Code (Source) NDC:79929-100

Route of Administration ORAL

Active Ingredient/Active Moiety

Ingredient Name	Basis of Strength	Strength
LEVONORGESTREL (UNII: 5W7SIA7YZW) (LEVONORGESTREL - UNII:5W7SIA7YZW)	LEVONORGESTREL	0.1 mg
ETHINYL ESTRADIOL (UNII: 423D2T571U) (ETHINYL ESTRADIOL - UNII:423D2T571U)	ETHINYL ESTRADIOL	0.02 mg

Inactive Ingredients

Ingredient Name	Strength
CROSCARMELOSE SODIUM (UNII: M28OL1HH48)	
LACTOSE MONOHYDRATE (UNII: EWQ57Q8I5X)	
MAGNESIUM STEARATE (UNII: 70097M6I30)	
CELLULOSE, MICROCRYSTALLINE (UNII: OP1R32D61U)	
POVIDONE (UNII: FZ989GH94E)	

Product Characteristics

Color	white (White to off white)	Score	no score
Shape	ROUND	Size	6mm
Flavor		Imprint Code	EH1
Contains			

Marketing Information

Marketing Category	Application Number or Monograph Citation	Marketing Start Date	Marketing End Date
ANDA	ANDA207065	12/31/2022	

Part 2 of 2

INERT

inert tablet

Product Information

Item Code (Source) NDC:79929-101

Route of Administration ORAL

Inactive Ingredients

Ingredient Name	Strength
FD&C YELLOW NO. 6 (UNII: H77VEI93A8)	
LACTOSE MONOHYDRATE (UNII: EWQ57Q8I5X)	
MAGNESIUM STEARATE (UNII: 70097M6I30)	
STARCH, CORN (UNII: O8232NY3SJ)	

Product Characteristics

Color	orange (peach)	Score	no score
Shape	ROUND	Size	6mm
Flavor		Imprint Code	EH2
Contains			

Marketing Information

Marketing Category	Application Number or Monograph Citation	Marketing Start Date	Marketing End Date
ANDA	ANDA207065	12/31/2022	

Marketing Information

Marketing Category	Application Number or Monograph Citation	Marketing Start Date	Marketing End Date
ANDA	ANDA207065	03/31/2024	

Labeler - Naari Pte Limited (659345996)

Registrant - Naari Pte Limited (659345996)

Establishment

Name	Address	ID/FEI	Business Operations
Naari Pharma Private Limited		915787058	manufacture(79929-004)

Revised: 4/2024

Naari Pte Limited