

CTEXLI- chenodiol tablet, film coated
Mirum Pharmaceuticals Inc.

HIGHLIGHTS OF PRESCRIBING INFORMATION

These highlights do not include all the information needed to use CTEXLI safely and effectively. See full prescribing information for CTEXLI.

CTEXLI™ (chenodiol) tablets, for oral use
Initial U.S. Approval: 1983

----- **INDICATIONS AND USAGE** -----

CTEXLI is a bile acid indicated for treatment of cerebrotendinous xanthomatosis (CTX) in adults. (1)

----- **DOSAGE AND ADMINISTRATION** -----

- Before initiating CTEXLI, obtain baseline liver transaminase (alanine aminotransferase [ALT] and aspartate aminotransferase [AST]) and total bilirubin levels in all patients. (2.1)
- The recommended dosage is 250 mg orally three times daily. (2.2)

----- **DOSAGE FORMS AND STRENGTHS** -----

CTEXLI tablets: 250 mg. (3)

----- **CONTRAINDICATIONS** -----

None. (4)

----- **WARNINGS AND PRECAUTIONS** -----

Hepatotoxicity: Obtain baseline liver transaminase and total bilirubin levels in all patients and monitor yearly and as clinically indicated. Interrupt treatment until the levels have returned to baseline values. For persistent or recurrent liver test abnormalities, consider discontinuing CTEXLI. (5.1)

----- **ADVERSE REACTIONS** -----

The most common adverse reactions (incidence > 14%) are diarrhea, headache, abdominal pain, constipation, hypertension, muscular weakness, and upper respiratory tract infection. (6.1)

To report SUSPECTED ADVERSE REACTIONS, contact Mirum Pharmaceuticals at 1-855-MRM-4YOU or FDA at 1-800-FDA-1088 or www.fda.gov/medwatch.

----- **DRUG INTERACTIONS** -----

- Bile acid sequestering agents and aluminum-based antacids: Avoid concomitant use with CTEXLI. (7.1)
- Coumarin and its derivatives: Monitor prothrombin time and adjust dosage accordingly. (7.2)

See 17 for PATIENT COUNSELING INFORMATION.

Revised: 2/2025

FULL PRESCRIBING INFORMATION: CONTENTS*

1 INDICATIONS AND USAGE

2 DOSAGE AND ADMINISTRATION

2.1 Important Recommendation Prior to CTEXLI Treatment Initiation

2.2 Recommended Dosage

2.3 Administration Modification and Monitoring

3 DOSAGE FORMS AND STRENGTHS

4 CONTRAINDICATIONS

5 WARNINGS AND PRECAUTIONS

5.1 Hepatotoxicity

6 ADVERSE REACTIONS

- 6.1 Clinical Trials Experience
- 6.2 Postmarketing Experience

7 DRUG INTERACTIONS

- 7.1 Effect of Other Drugs on CTEXLI
- 7.2 Effect of CTEXLI on Other Drugs

8 USE IN SPECIFIC POPULATIONS

- 8.1 Pregnancy
- 8.2 Lactation
- 8.4 Pediatric Use
- 8.5 Geriatric Use

10 OVERDOSAGE

11 DESCRIPTION

12 CLINICAL PHARMACOLOGY

- 12.1 Mechanism of Action
- 12.2 Pharmacodynamics
- 12.3 Pharmacokinetics

13 NONCLINICAL TOXICOLOGY

- 13.1 Carcinogenesis, Mutagenesis, Impairment of Fertility
- 13.2 Animal Toxicology and/or Pharmacology

14 CLINICAL STUDIES

16 HOW SUPPLIED/STORAGE AND HANDLING

17 PATIENT COUNSELING INFORMATION

* Sections or subsections omitted from the full prescribing information are not listed.

FULL PRESCRIBING INFORMATION

1 INDICATIONS AND USAGE

CTEXLI is indicated for the treatment of cerebrotendinous xanthomatosis (CTX) in adults.

2 DOSAGE AND ADMINISTRATION

2.1 Important Recommendation Prior to CTEXLI Treatment Initiation

Before initiating CTEXLI, obtain baseline liver transaminase (alanine aminotransferase [ALT] and aspartate aminotransferase [AST]) and total bilirubin levels in all patients [see *Warnings and Precautions* (5.1)].

2.2 Recommended Dosage

The recommended dosage of CTEXLI is 250 mg administered orally three times daily. Administer CTEXLI with or without food. Swallow tablets whole.

Missed Dose

If a dose of CTEXLI is missed, advise the patient to skip the missed dose and to resume taking the prescribed dose at the next scheduled time. Patients should not take a double dose.

2.3 Administration Modification and Monitoring

If liver transaminase (ALT, AST) levels are elevated > 3 times the upper limit of normal (ULN) or total bilirubin level is >2 times ULN, interrupt treatment with CTEXLI until the levels have returned to baseline values. Monitor liver transaminase and total bilirubin levels yearly and as clinically indicated [see *Warnings and Precautions (5.1)*].

3 DOSAGE FORMS AND STRENGTHS

Tablets: 250 mg of chenodiol as white film-coated tablets imprinted with "MP" on one side and "250" on the other side.

4 CONTRAINDICATIONS

None.

5 WARNINGS AND PRECAUTIONS

5.1 Hepatotoxicity

Chenodiol, including CTEXLI, has been associated with hepatotoxicity [see *Adverse Reactions (6)*]. In Trial 1, one CTEXLI-treated patient (7%) had increased ALT levels > 3 times ULN, which led to treatment interruption. Patients with pre-existing liver disease or bile duct abnormalities may be at higher risk for hepatotoxicity during treatment with CTEXLI. Published reports suggest patients who are poor sulfators of lithocholic acid are more likely to develop chenodiol-induced serum aminotransferase elevations [see *Clinical Pharmacology (12.3)*].

Obtain baseline liver transaminase (ALT, AST) and total bilirubin levels in all patients prior to treatment initiation with CTEXLI. If liver transaminase levels are elevated > 3 times ULN or total bilirubin level is >2 times ULN, interrupt treatment with CTEXLI until the levels have returned to baseline values. Monitor liver transaminase and total bilirubin levels yearly and as clinically indicated. For persistent or recurrent liver test abnormalities, consider discontinuing CTEXLI.

Inform the patient of the symptoms of hepatotoxicity (e.g., abdominal pain, bruising, dark-colored urine, fatigue, bleeding, jaundice, nausea, and pruritus). If clinical signs and symptoms consistent with hepatotoxicity occur, have the patient discontinue CTEXLI immediately.

6 ADVERSE REACTIONS

The following clinically significant adverse reaction is described elsewhere in the labeling:

- Hepatotoxicity [see *Warnings and Precautions (5.1)*]

6.1 Clinical Trials Experience

Because clinical trials are conducted under widely varying conditions, adverse reaction rates observed in the clinical trials of a drug cannot be directly compared to rates in the clinical trials of another drug and may not reflect the rates observed in practice.

The safety of CTEXLI was evaluated in a randomized, double blind, placebo-controlled, 2-period, 2-treatment crossover trial in 14 patients (16 to 55 years of age) with CTX (Trial 1). CTEXLI is not approved for use in pediatric patients. The dosage of CTEXLI was 250 mg orally three times a day [see *Clinical Studies (14)*]. The mean (SD) chenodiol exposure during Trial 1 was 139.1 (26.7) days.

The most common adverse reactions which occurred in two or more patients ($\geq 14\%$) during CTEXLI treatment (including the two 8-week open-label treatment periods) were diarrhea (36%), headache (21%), and abdominal pain (including abdominal pain upper) (14%), constipation (14%), hypertension (14%), muscular weakness (14%), and upper respiratory tract infection (14%).

In Trial 1, one CTEXLI-treated patient (7%) had increased ALT levels $> 3\times$ ULN, which led to treatment interruption.

6.2 Postmarketing Experience

The following adverse reactions have been identified during post approval use of chenodiol. Because these reactions are reported voluntarily from a population of uncertain size, it is not always possible to reliably estimate their frequency or establish a causal relationship to drug exposure.

- *Hepatobiliary Disorders:* Hepatotoxicity [see *Warnings and Precautions (5.1)*]
- *Immune System Disorders:* Hypersensitivity reactions such as facial swelling, pruritus, rash, urticaria.

7 DRUG INTERACTIONS

7.1 Effect of Other Drugs on CTEXLI

Co-administration of bile acid sequestering agents, such as cholestyramine and colestipol, or aluminum-based antacids may decrease absorption of CTEXLI in the intestine and may result in decreased efficacy of CTEXLI. Avoid concomitant use of bile acid sequestering agents or aluminum-based antacids with CTEXLI.

7.2 Effect of CTEXLI on Other Drugs

Due to potential hepatotoxicity, CTEXLI may affect the pharmacodynamics of coumarin and its derivatives, causing unexpected prolongation of the prothrombin time and hemorrhage. If concomitant use of CTEXLI with coumarin or its derivatives is unavoidable, monitor prothrombin time. Adjust the dosage of coumarin or its derivatives in accordance with its approved product labeling.

8 USE IN SPECIFIC POPULATIONS

8.1 Pregnancy

Risk Summary

Available data from published case reports over decades of use with chenodiol during pregnancy have not identified an increased risk of major birth defects, miscarriage, or other adverse maternal or fetal outcomes. Serious hepatic, renal and adrenal lesions occurred in fetuses of female Rhesus monkeys treated at doses 1 to 2 times the recommended human dose based on body surface area (mg/m^2). Hepatic lesions also occurred at doses comparable to the human dose based on body surface area in neonatal baboons born to mothers administered chenodiol during pregnancy (see *Data*). The animal study findings have not been demonstrated with human use.

The background risk of major birth defects and miscarriage for the indicated population is unknown. All pregnancies have a background risk of birth defect, loss, or other adverse outcomes. In the US general population, the estimated background risk of major birth defects and miscarriage in clinically recognized pregnancies is 2 to 4% and 15 to 20%, respectively.

Data

Animal Data

Hepatic lesions were reported in neonatal baboons whose mothers had received 18 to 38 mg/kg of chenodiol throughout pregnancy (0.6 to 1.4 times the recommended human dose based on body surface area). Serious hepatic, renal and adrenal lesions were also reported in fetuses of female Rhesus monkeys given 60 to 90 $\text{mg}/\text{kg}/\text{day}$ from GD 21-45 of pregnancy (1 to 2 times the recommended human dose based on body surface area). Non-human primates form sulfate conjugates of the known hepatotoxic bacterial metabolite of chenodiol, lithocholic acid, to a lesser extent than reported in humans, which may exaggerate the toxicity of orally dosed chenodiol compared to humans. However, there is also evidence that the hepatobiliary toxicity is partly due to the parent drug, chenodiol.

8.2 Lactation

Risk Summary

There are no data on the presence of chenodiol in either human or animal milk, the effects on the breastfed infant, or the effects on milk production. The developmental and health benefits of breastfeeding should be considered along with the mother's clinical need for CTEXLI and any potential adverse effects on the breastfed infant from CTEXLI or the underlying maternal condition.

8.4 Pediatric Use

The safety and effectiveness of CTEXLI for the treatment of CTX have not been established in pediatric patients.

8.5 Geriatric Use

Trial 1 of CTEXLI in patients with CTX did not include patients aged 65 years and older.

10 OVERDOSAGE

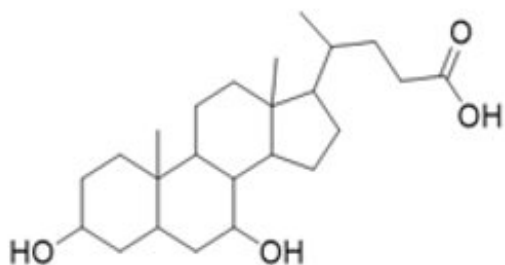
Cases of intentional overdose with chenodiol have been reported: one patient consumed 3 g to 4.5 g of chenodiol and another patient consumed 30 g of chenodiol. Clinical manifestations experienced by these patients included nausea, dizziness, and diarrhea.

In the event of an overdose, discontinue CTEXLI, monitor the patient, and institute general supportive measures if needed.

11 DESCRIPTION

CTEXLI (chenodiol) is a bile acid. Chenodiol is a bitter-tasting, white powder consisting of crystalline and amorphous particles that are freely soluble in methanol, acetone and acetic acid, and practically insoluble in water.

The chemical name of chenodiol is 3 α ,7 α -dihydroxy-5- β -cholan-24-oic acid. The molecular formula is C₂₄H₄₀O₄ and the molecular weight is 392.58 g/mol. The chemical structure is:



Each CTEXLI tablet contains 250 mg of chenodiol. Inactive ingredients are magnesium stearate, microcrystalline cellulose, pregelatinized starch, silicon dioxide, and sodium starch glycolate. The thin-film coating contains opadry YS 2 7035 (consisting of methylcellulose and glycerin) and sodium lauryl sulfate.

12 CLINICAL PHARMACOLOGY

12.1 Mechanism of Action

Endogenous chenodiol (chenodeoxycholic acid) is a primary bile acid, synthesized from cholesterol in the liver. In CTX, the major bile acid synthesis pathways are disrupted due to partial or total deficiency in sterol 27-hydroxylase encoded by the CYP27A1 gene.

CTEXLI may act to replace deficient levels of the endogenous bile acid chenodeoxycholic acid in patients with CTX. Increased chenodiol levels in the enterohepatic bile acid pool restore the activation of farnesoid X receptor (FXR) and downregulate CYP7A1 leading to suppression and reduction of atypical bile acids and bile alcohols including cholestanol and 23S-pentol.

12.2 Pharmacodynamics

In Trial 1, plasma cholestanol and urine 23S-pentol concentrations were elevated in patients with CTX. Treatment with CTEXLI resulted in reductions of plasma cholestanol

and urine 23S-pentol concentrations in the 8-week run-in open label treatment period. Continued treatment with CTEXLI for 4 weeks in the double-blind treatment period resulted in the maintenance of low levels of urine 23S-pentol and additional reductions of plasma cholestanol [see *Clinical Studies (14)*].

12.3 Pharmacokinetics

In CTX patients, the geometric mean (%CV) maximum plasma concentration (C_{\max}), trough plasma concentration (C_{trough}), and area under the plasma concentration-time curve (AUC_{0-8h}) of chenodiol at steady state following the recommended dosage (250 mg administered orally three times daily) were 3.7 mcg/mL (60%), 0.7 mcg/mL (90%), and 12.5 mcg*h/mL (60%), respectively.

Absorption

The median (range) T_{\max} of chenodiol following an oral administration in CTX patients was 3 (0.5-8) hours.

Distribution

Due to first-pass hepatic clearance, the body pool of chenodiol resides mainly in the enterohepatic circulation. The apparent volume of distribution of chenodiol at steady-state was 0.36 L/kg. The plasma protein binding of chenodiol was approximately 98%.

Elimination

The geometric mean total apparent clearance of chenodiol in CTX patients was 20 L/h.

Metabolism

Chenodiol is well absorbed from the small intestine and taken up by the liver where it is converted to its taurine and glycine conjugates and secreted into the bile along with other endogenous bile acids in the enterohepatic circulation. Chenodiol that escapes to the colon is converted by bacterial action to lithocholic acid. Humans have the capacity to form sulfate conjugates of lithocholic acid. About 80% of the lithocholate is excreted in the feces and the remainder is absorbed and converted in the liver to its poorly absorbed sulfolithocholyl conjugates.

Excretion

Conjugated chenodiol is either reabsorbed in the terminal ileum, deconjugated before excretion, or decomposed by bacteria to lithocholic acid.

Drug Interaction Studies

Based on *in vitro* studies, chenodiol and its glyco- and tauro- conjugates are not expected to inhibit CYPs 1A2, 2B6, 2C8, 2C9, 2C19, 2D6, or 3A4, or induce CYPs 1A2 or 2B6 at the recommended dose of chenodiol of 250 mg TID. Chenodiol and its tauro-conjugate may upregulate CYP3A4 mRNA *in vitro*. The clinical significance of this upregulation is unknown.

The glyco- and tauro- conjugates of chenodiol are high affinity substrates for BSEP, and *in vitro* studies suggest that chenodiol may inhibit OATP1B1 and OATP1B3 at the recommended dose of 250 mg TID (clinical significance unknown), but chenodiol and its glyco- and tauro- conjugates are not predicted to inhibit P-gp, BCRP, OATP2B1, OAT1, OAT3, OCT1, OCT2, MATE1, or MATE2-K.

13 NONCLINICAL TOXICOLOGY

13.1 Carcinogenesis, Mutagenesis, Impairment of Fertility

A two-year oral study of chenodiol in rats did not show a carcinogenic potential at the tested levels of 15 to 60 mg/kg/day (0.2 to 0.6 times the recommended human dose based on body surface area). In additional long-term studies, chenodiol given at oral doses up to 600 mg/kg/day in rats (6 times the recommended human dose based on body surface area), and 1000 mg/kg/day in mice (5 times the recommended human dose based on body surface area) induced benign and malignant liver cell tumors in female rats and cholangiomas in female rats and male mice. Two-year studies of lithocholic acid (a major metabolite of chenodiol) in mice (125 to 250 mg/kg/day, equivalent to 0.7 to 1.4 times the recommended human dose based on body surface area) and rats (250 and 500 mg/kg/day, equivalent to 3 to 5 times the recommended human dose based on body surface area) found it not to be carcinogenic. The dietary administration of lithocholic acid to chickens is reported to cause hepatic adenomatous hyperplasia.

13.2 Animal Toxicology and/or Pharmacology

Chenodiol caused hepatobiliary toxicity (e.g., cholestasis) in many animal species, including rodents, non-rodents, and non-human primates at doses close to the human dose. Less efficient sulfation of the chenodiol metabolite, lithocholic acid, in non-human primates compared to humans is thought to cause the hepatobiliary toxicity of orally dosed chenodiol. However, there is evidence that the hepatobiliary toxicity is partly due to the parent drug, chenodiol.

14 CLINICAL STUDIES

The efficacy of CTEXLI for the treatment of patients with CTX was evaluated in Trial 1, which was a randomized, double-blind, placebo controlled, 2-period with 2-treatment crossover trial in patients ≥ 16 years of age (NCT 04270682).

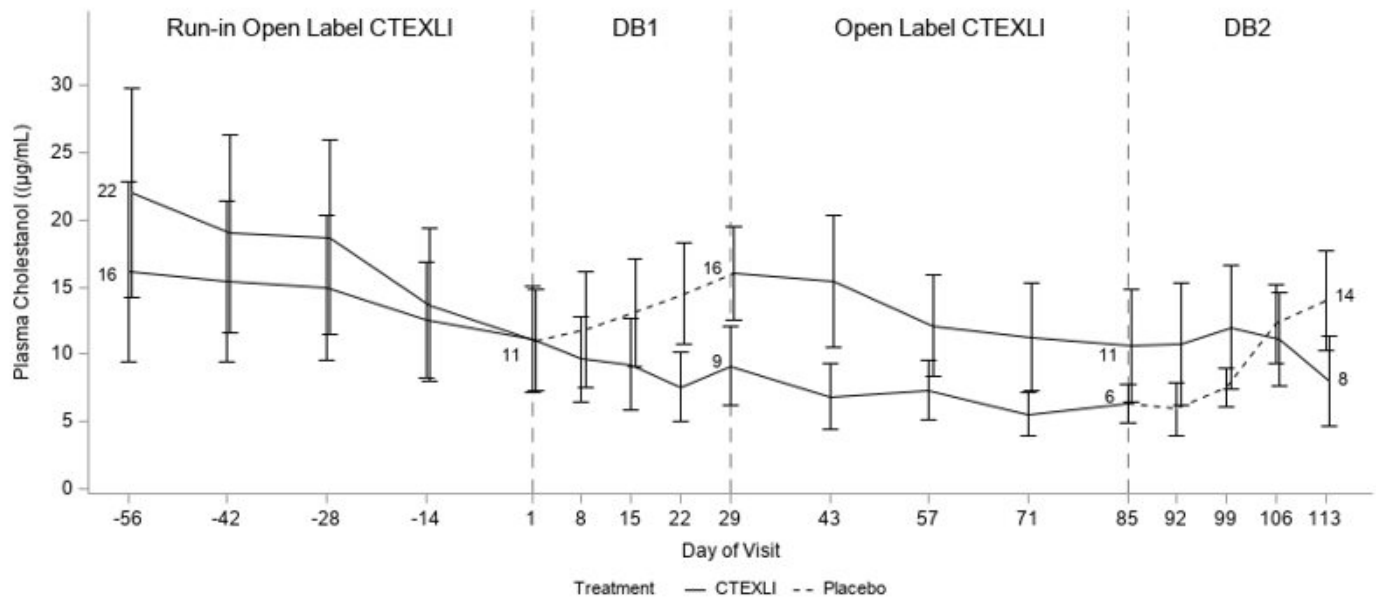
In Trial 1, 14 patients were enrolled and 13 patients were randomized and treated in a crossover withdrawal design to receive either CTEXLI 250 mg or placebo orally three times daily for 4 weeks during 2 double-blind treatment periods. The study also included treatment with CTEXLI 250 mg three times daily during an 8 week run-in period and an 8-week open label period in between the 2 double-blind withdrawal periods. The total duration of study treatment was 24 weeks.

Of the 13 randomized patients, 62% were male and 39% were female. The baseline median age was 42 years (16-55) and median age at diagnosis was 35 years (15-55). CTEXLI is not approved for use in pediatric patients. The patient population consisted of 62% White, 15% Asian, and 23% Other (In the Other racial group, there was one patient who reported both White and Black). Ethnicity consisted of 15% Hispanic or Latino, 54% not Hispanic or Latino, and 31% unknown.

Plasma cholestanol and urine 23S-pentol were assessed at multiple time points as shown in Figure 1. For plasma cholestanol, the estimated mean change from baseline at day 29 was -2.3 $\mu\text{g/mL}$ when patients continued CTEXLI treatment and 6.2 $\mu\text{g/mL}$ when patients received placebo. The estimated treatment difference was -8.5 $\mu\text{g/mL}$ (95% CI: -13.2, -

3.9) (Table 1). For urine 23S-pentol, the estimated mean change from baseline at day 29 was 185 ng/mL when patients continued CTEXLI treatment and 29506 ng/mL when patients received placebo. The estimated treatment difference was -29321 ng/mL (95% CI: -45701, -12941).

Figure 1: Mean (SE) of Observed Plasma Cholestanol by Treatment Sequence (All Randomized Patients)



DB = double-blind. Solid line represents treatment with CTEXLI and dashed line represents treatment with placebo. The mean values of plasma cholestanol at baselines and end of each DB period are annotated in the figure.

Table 1: Summary Results for Plasma Cholestanol and Urine 23S Pentol

Plasma Cholestanol (µg/mL)	Mean (SD)	CTEXLI (N = 13)	Placebo (N = 13)
	Baseline	10.8 (10.0)	8.8 (7.8)
	Day 29	8.5 (7.0)	15.1 (8.8)
	Change from Baseline at Day 29	-2.3 (3.9)	6.2 (5.6)
	Treatment Difference	-8.5 (95% CI: -13.2, -3.9)	
Urine 23S-Pentol (ng/mL)	Baseline	1811 (1693)	1773 (1940)
	Day 29	1996 (1341)	31279 (27595)
	Change from Baseline at Day 29	185 (1479)	29506 (27257)
	Treatment Difference	-29321 (95% CI: -45701, -12941)	

For each study treatment (placebo or CTEXLI), the mean value at Baseline was calculated as the mean of the measurements obtained prior to receiving the study treatment during the double-blind study duration; and the mean value at Day 29 was calculated as the mean of the measurements at Day 29 at the end of the study treatment.

For each patient at each visit, the measurement of urine 23S-pentol was calculated as the geometric mean of first 3 morning void urine samples collected within 5 days prior

to the visit.

16 HOW SUPPLIED/STORAGE AND HANDLING

How Supplied

CTEXLI (chenodiol) tablets are supplied as 250 mg white film-coated tablets imprinted with "MP" on one side and "250" on the other side.

NDC 79378-310-90: 100 count bottle

Storage and Handling

Store CTEXLI at 20°C to 25°C (68°F to 77°F); excursions permitted between 15°C to 30°C (59°F to 86°F) [see USP Controlled Room Temperature].

17 PATIENT COUNSELING INFORMATION

Hepatotoxicity

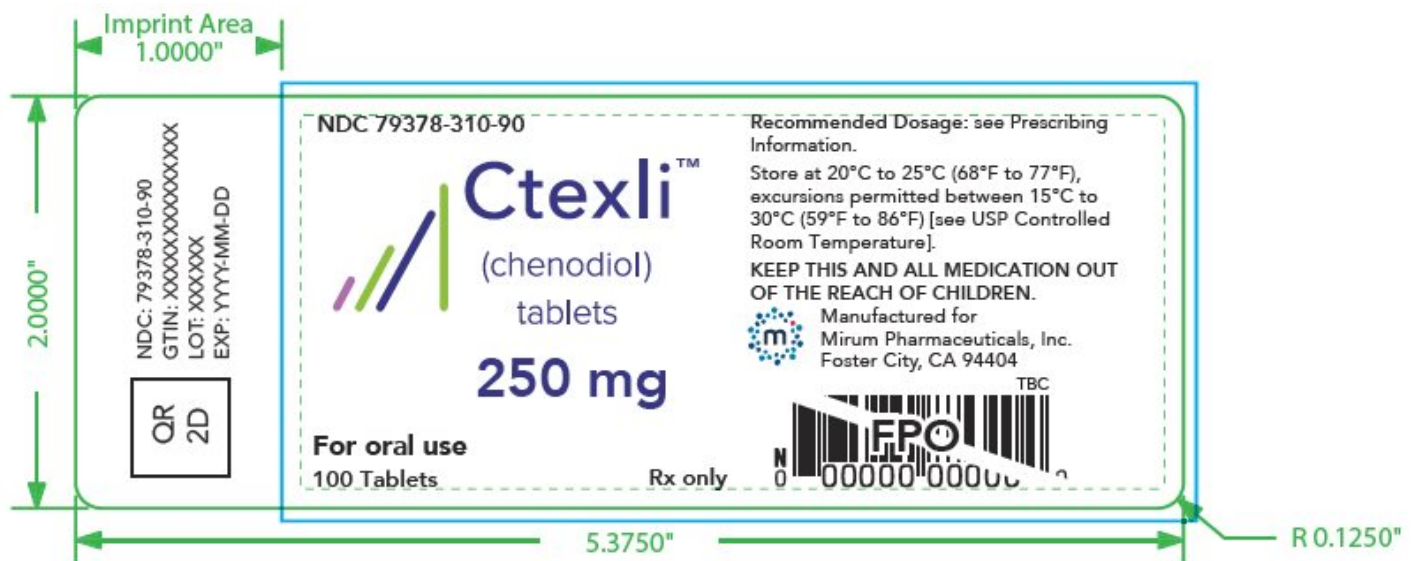
Inform the patient of the symptoms of hepatotoxicity (e.g., abdominal pain, bruising, dark-colored urine, fatigue, bleeding, jaundice, nausea, and pruritus). Instruct the patient to discontinue CTEXLI immediately and seek medical care should symptoms occur [see *Warnings and Precautions* (5.1)].

Rx only

Manufactured for:
Mirum Pharmaceuticals, Inc.
Foster City, CA 94404

© 2025 Mirum Pharmaceuticals, Inc.
CTEXLI™ is a pending trademark of Mirum Pharmaceuticals, Inc.

PACKAGE/LABEL PRINCIPAL DISPLAY PANEL



QR 2D;
NDC: 79378-310-90;
GTIN: XXXXXXXXXXXXXXX;
LOT: XXXXXX;
EXP: YYYY-MM-DD;

NDC 79378-310-90;

Ctexli; (chenodiol); tablets; 250 mg; For oral use; 100 Tablets; Rx only;

Recommended Dosage: see Prescribing Information.

Store at 20°C to 25°C (68°F to 77°F), excursions permitted between 15°C to 30°C (59°F to 86°F) [see USP Controlled Room Temperature].

KEEP THIS AND ALL MEDICATION OUT OF THE REACH OF CHILDREN.

Manufactured for
Mirum Pharmaceuticals, Inc.
Foster City, CA 94404

CTEXLI

chenodiol tablet, film coated

Product Information

Product Type	HUMAN PRESCRIPTION DRUG	Item Code (Source)	NDC:79378-310
Route of Administration	ORAL		

Active Ingredient/Active Moiety

Ingredient Name	Basis of Strength	Strength
CHENODIOL (UNII: 0GEI24LG0J) (CHENODIOL - UNII:0GEI24LG0J)	CHENODIOL	250 mg

Inactive Ingredients

Ingredient Name	Strength
SILICON DIOXIDE (UNII: ETJ7Z6XBU4)	
MICROCRYSTALLINE CELLULOSE (UNII: OP1R32D61U)	
SODIUM STARCH GLYCOLATE TYPE A POTATO (UNII: 5856J3G2A2)	
MAGNESIUM STEARATE (UNII: 70097M6I30)	
METHYLCELLULOSE (100 MPA.S) (UNII: 4GFU244C4J)	
GLYCERIN (UNII: PDC6A3C0OX)	
SODIUM LAURYL SULFATE (UNII: 368GB5141J)	
STARCH, CORN (UNII: O8232NY3SJ)	

Product Characteristics

Color	WHITE	Score	no score
Shape	ROUND	Size	10mm
Flavor		Imprint Code	MP;250

Contains				
Packaging				
#	Item Code	Package Description	Marketing Start Date	Marketing End Date
1	NDC:79378-310-90	100 in 1 BOTTLE; Type 0: Not a Combination Product	04/04/2025	
Marketing Information				
Marketing Category		Application Number or Monograph Citation	Marketing Start Date	Marketing End Date
NDA		NDA219488	04/04/2025	

Labeler - Mirum Pharmaceuticals Inc. (116902386)