

CREST COMPLETE MULTI-BENEFIT WHITENING PLUS SCOPE- sodium fluoride paste, dentifrice
Procter & Gamble Manufactura, S. de R.L. de C.V.

Crest® Complete Multi-Benefit™

Whitening plus Scope®

Drug Facts

Active ingredient

Sodium fluoride 0.243%
(0.15% w/v fluoride ion)

Purpose

Anticavity toothpaste

Use

Warning

Keep out of reach of children under 6 yrs. of age. If more than used for brushing is accidentally swallowed, get medical help or contact a Poison Control Center right away.

Directions

- adults and children 2 yrs. & older: brush teeth thoroughly after meals or at least twice a day or use as directed by a dentist
- do not swallow
- to minimize swallowing use a pea-sized amount in children under 6
- supervise children's brushing until good habits are established
- children under 2 yrs.: ask a dentist

Inactive ingredients

sorbitol, water, hydrated silica, disodium pyrophosphate, sodium lauryl sulfate, flavor, sodium hydroxide, alcohol (0.7%), xanthan gum, sodium saccharin, glycerin, carbomer, cellulose gum, polysorbate 80, sodium benzoate, cetylpyridinium chloride, benzoic acid, titanium dioxide, blue 1, yellow 5

Questions?

1-800-492-7378

DISTR. BY/POR PROCTER & GAMBLE,
CINCINNATI, OH 45202

PRINCIPAL DISPLAY PANEL - 226 g Tube Carton

Crest®

complete

MULTI-

BENEFIT™

NET WT

8.0 OZ (226 g)

FLUORIDE TOOTHPASTE

WHITENING+

scope®

minty fresh striped

Crest complete MULTI-BENEFIT
NET WT/ PESO NETO 8.0 OZ (226 g) FLUORIDE TOOTHPASTE/PASTA DENTAL CON FLUORURO

scope WHITENING+ BLANQUEADORA+
minty fresh striped
frescura de menta

Crest complete MULTI-BENEFIT™
NET WT/PESO NETO 8.0 OZ (226 g) FLUORIDE TOOTHPASTE/PASTA DENTAL CON FLUORURO

Drug Facts
Keep out of reach of children under 6 yrs. of age, if more than used for brushing teeth. If swallowed, contact a Poison Control Center right away.
Use helps protect against cavities.

Warnings
• Adults and children 2 yrs. & older: brush teeth thoroughly after meals or oral contact.
• Do not swallow.
• To minimize swallowing use a pea-sized amount in children under 6 yrs. of age.
• Habits are established in children under 2 yrs. ask a dentist.

Directions
• Adults and children 2 yrs. & older: brush teeth thoroughly after meals or oral contact.
• Do not swallow.
• To minimize swallowing use a pea-sized amount in children under 6 yrs. of age.
• Habits are established in children under 2 yrs. ask a dentist.

Ingredients
Active ingredients: water, hydrated silica, titanium dioxide, sodium lauryl sulfate, fluorapatite, sodium fluoride (0.15%), zinc oxide (0.7%), xanthan gum, sodium saccharin, glycerin, carboner, calcium gum, poly sorbate 80, sodium lauryl sulfate, sodium benzoate, sodium hydroxide, titanium dioxide, blue 1, yellow 5.

Propósito
Fluoruro sódico (0.243%),... Past dental (0.15%) y 1.5% de fluoruro de amoníaco.

Uso
Ayuda a proteger contra las caries.

Advertencias
Mantenga fuera del alcance de niños menores de 6 años. En caso de ingerir accidentalmente una cantidad mayor a la del cepillado, pida asistencia médica. Llame a un Centro de Control de Emergencias inmediatamente.

Precauciones
• Adultos y niños de 2 años o mayores: Cepílese bien los dientes después de cada comida o al menos dos veces al día.
• No se debe tragar.
• Para disminuir la ingestión, los niños menores de 6 años deben usar una cantidad del tamaño de un chícharo.
• Minimice el tragar al cepillarse.
• Niños menores de 2 años: Conéctese con un dentista.

Contraindicaciones
• Adultos y niños de 2 años o mayores: Cepílese bien los dientes después de cada comida o al menos dos veces al día.
• No se debe tragar.
• Para disminuir la ingestión, los niños menores de 6 años deben usar una cantidad del tamaño de un chícharo.
• Minimice el tragar al cepillarse.
• Niños menores de 2 años: Conéctese con un dentista.

Preparación
• Adultos y niños de 2 años o mayores: Cepílese bien los dientes después de cada comida o al menos dos veces al día.
• No se debe tragar.
• Para disminuir la ingestión, los niños menores de 6 años deben usar una cantidad del tamaño de un chícharo.
• Minimice el tragar al cepillarse.
• Niños menores de 2 años: Conéctese con un dentista.

Preguntas? 1-800-492-7378

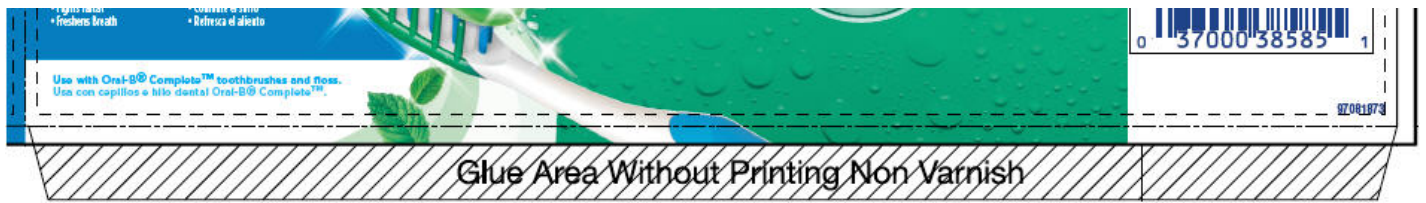
P&G
www.pg.com
MADE IN MEXICO/HECHO EN MEXICO
DISTR. BY/POR PROCTER & GAMBLE,
CINCINNATI, OH 45202
www.crest.com www.scope.com
Patents/Patentes: www.pg.com/patents
© 2015 P&G

Crest complete MULTI-BENEFIT
Feel It Working. Know You're Covered.
• Fights Cavities
• Removes Surface Stains
• Strengthens Enamel
• Fights Tardiness

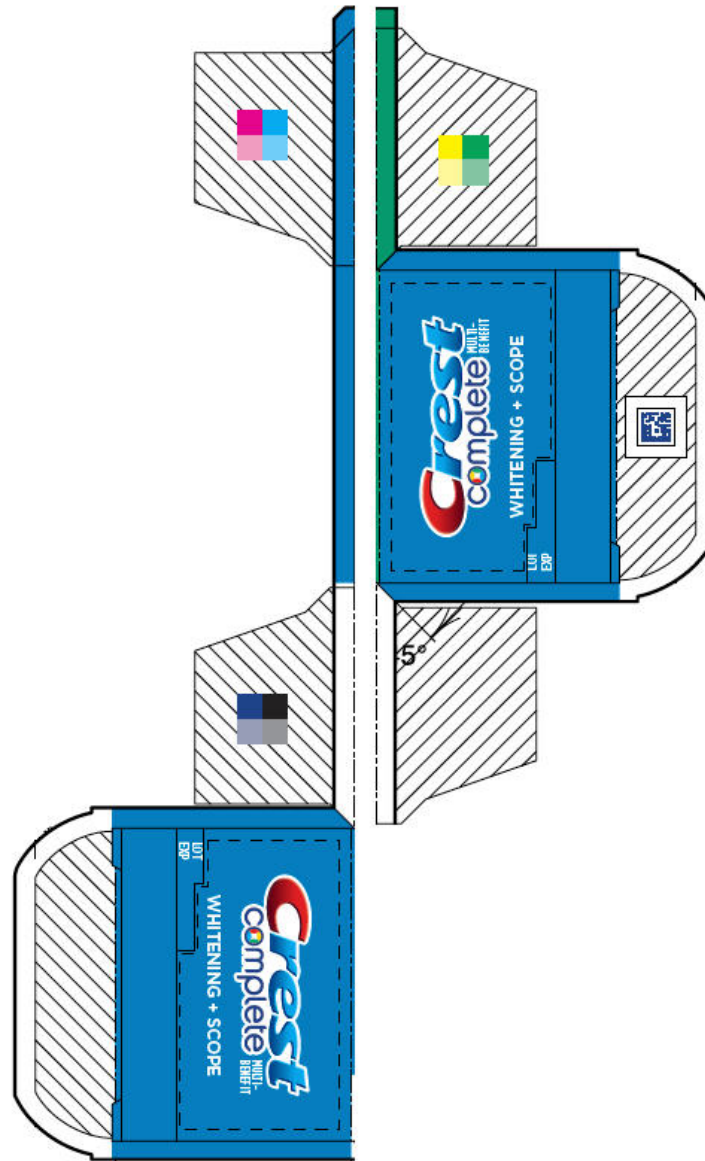
La dientes trabajar. Sabes que te protege.
• Combate las caries
• Elimina las manchas superficiales
• Fortalece el esmalte
• Combate el tartar

CREST WHITENING+ BLANQUEADORA+

scope FRESHNESS REFRESCANTE



Glue Area Without Printing Non Varnish



CREST COMPLETE MULTI-BENEFIT WHITENING PLUS SCOPE

sodium fluoride paste, dentifrice

Product Information

Product Type	HUMAN OTC DRUG	Item Code (Source)	NDC:58933-020
Route of Administration	DENTAL		

Active Ingredient/Active Moiety

Ingredient Name	Basis of Strength	Strength
SODIUM FLUORIDE (UNII: 8ZYQ1474W7) (FLUORIDE ION - UNII:Q80VPU4080)	FLUORIDE ION	1.5 mg in 1 g

Inactive Ingredients

Ingredient Name	Strength
SORBITOL (UNII: 506T60A25R)	
WATER (UNII: 059QF0KO0R)	
HYDRATED SILICA (UNII: Y607T4G8P9)	
SODIUM ACID PYROPHOSPHATE (UNII: H5WWD9LZUD)	
SODIUM LAURYL SULFATE (UNII: 368GB5141J)	
SODIUM HYDROXIDE (UNII: 55X04QC32I)	
ALCOHOL (UNII: 3K9958V90M)	
XANTHAN GUM (UNII: TTV12P4NEE)	
SACCHARIN SODIUM (UNII: SB8ZUX40TY)	
GLYCERIN (UNII: PDC6A3C0OX)	
CARBOXYMETHYLCELLULOSE SODIUM (UNII: K679OBS311)	
POLYSORBATE 80 (UNII: 6OZP39ZG8H)	
SODIUM BENZOATE (UNII: OJ245FE5EU)	
CETYLPIRIDINIUM CHLORIDE (UNII: D9OM4SK49P)	
BENZOIC ACID (UNII: 8SKN0B0MIM)	
TITANIUM DIOXIDE (UNII: 15FIX9V2JP)	
FD&C BLUE NO. 1 (UNII: H3R47K3TBD)	
FD&C YELLOW NO. 5 (UNII: I753WB2F1M)	

Product Characteristics

Color	green	Score	
Shape		Size	
Flavor	PEPPERMINT	Imprint Code	
Contains			

Packaging

#	Item Code	Package Description	Marketing Start Date	Marketing End Date
1	NDC:58933-020-03	1 in 1 CARTON	07/01/2011	
1		76.5 g in 1 TUBE; Type 0: Not a Combination Product		
2	NDC:58933-020-06	1 in 1 CARTON	07/01/2011	
2		175 g in 1 TUBE; Type 0: Not a Combination Product		
3	NDC:58933-020-08	1 in 1 CARTON	07/01/2011	
3		226 g in 1 TUBE; Type 0: Not a Combination Product		
4	NDC:58933-020-85	24 g in 1 TUBE; Type 0: Not a Combination Product	07/01/2011	

Marketing Information

Marketing	Application Number or Monograph	Marketing Start	Marketing End
-----------	---------------------------------	-----------------	---------------

Category	Citation	Date	Date
OTC Monograph Drug	M021	07/01/2011	

Labeler - Procter & Gamble Manufactura, S. de R.L. de C.V. (812807550)

Revised: 12/2023

Procter & Gamble Manufactura, S. de R.L. de C.V.