

BICALUTAMIDE - bicalutamide tablet, film coated
Physicians Total Care, Inc.

HIGHLIGHTS OF PRESCRIBING INFORMATION

These highlights do not include all the information needed to use bicalutamide tablets USP safely and effectively. See full prescribing information for bicalutamide tablets USP.

Bicalutamide Tablets USP for Oral use
Initial U.S. Approval: 1995

----- **INDICATIONS AND USAGE** -----

- Bicalutamide 50 mg is an androgen receptor inhibitor indicated for use in combination therapy with a luteinizing hormone-releasing hormone (LHRH) analog for the treatment of Stage D₂ metastatic carcinoma of the prostate.
- Bicalutamide 150 mg daily is not approved for use alone or with other treatments. (1)

----- **DOSAGE AND ADMINISTRATION** -----

The recommended dose for bicalutamide therapy in combination with an LHRH analog is one 50 mg tablet once daily (morning or evening). (2)

----- **DOSAGE FORMS AND STRENGTHS** -----

50 mg tablets (3)

----- **CONTRAINDICATIONS** -----

- Hypersensitivity (4.1)
- Women (4.2)
- Pregnancy (4.3 and 8.1)

----- **WARNINGS AND PRECAUTIONS** -----

- Severe hepatic changes and hepatic failure have been observed rarely. Monitor serum transaminase levels prior to starting treatment with bicalutamide, at regular intervals for the first four months of treatment and periodically thereafter, and for symptoms or signs suggestive of hepatic dysfunction. Use bicalutamide with caution in patients with hepatic impairment. (5.1)
- Gynecomastia and breast pain have been reported during treatment with bicalutamide 150 mg when used as a single agent. (5.2)
- Bicalutamide is used in combination with a LHRH agonist. LHRH agonists have been shown to cause a reduction in glucose tolerance in males. Consideration should be given to monitoring blood glucose in patients receiving bicalutamide in combination with LHRH agonists. (5.3)
- Monitoring Prostate Specific Antigen (PSA) is recommended. Evaluate for clinical progression if PSA increases. (5.4)

----- **ADVERSE REACTIONS** -----

Adverse reactions that occurred in more than 10% of patients receiving bicalutamide plus an LHRH-A were: hot flashes, pain (including general, back, pelvic and abdominal), asthenia, constipation, infection, nausea, peripheral edema, dyspnea, diarrhea, hematuria, nocturia and anemia. (6.1)

To report SUSPECTED ADVERSE REACTIONS, contact TEVA USA, PHARMACOVIGILANCE at 1-888-838-2872, X6351 or drug.safety@tevausa.com; or FDA at 1-800-FDA-1088 or www.fda.gov/medwatch.

----- **DRUG INTERACTIONS** -----

- R-bicalutamide is an inhibitor of CYP 3A4; therefore, caution should be used when bicalutamide is coadministered with CYP 3A4 substrates. (7)
- Prothrombin times should be closely monitored in patient already receiving coumarin anticoagulants who are started on bicalutamide. (7)

----- **USE IN SPECIFIC POPULATIONS** -----

- Pediatric patients: Labeling describing pediatric clinical studies for bicalutamide is approved for AstraZeneca Pharmaceuticals LP's bicalutamide tablet. However, due to AstraZeneca Pharmaceuticals LP's marketing exclusivity rights, a description of those clinical studies is not approved for this bicalutamide labeling. (8.4)

See 17 for PATIENT COUNSELING INFORMATION and FDA-approved patient labeling.

Revised: 8/2010

FULL PRESCRIBING INFORMATION: CONTENTS*

1 INDICATIONS AND USAGE

2 DOSAGE AND ADMINISTRATION

- 2.1 Dosage Adjustment in Renal Impairment
- 2.2 Dosage Adjustment in Hepatic Impairment

3 DOSAGE FORMS AND STRENGTHS

4 CONTRAINDICATIONS

- 4.1 Hypersensitivity
- 4.2 Women
- 4.3 Pregnancy

5 WARNINGS AND PRECAUTIONS

- 5.1 Hepatitis
- 5.2 Gynecomastia and Breast Pain
- 5.3 Glucose Tolerance
- 5.4 Laboratory Tests

6 ADVERSE REACTIONS

- 6.1 Clinical Trials Experience
- 6.2 Postmarketing Experience

7 DRUG INTERACTIONS

8 USE IN SPECIFIC POPULATIONS

- 8.1 Pregnancy
- 8.3 Nursing Mothers
- 8.4 Pediatric Use
- 8.5 Geriatric Use
- 8.6 Hepatic Impairment
- 8.7 Renal Impairment
- 8.8 Women

10 OVERDOSAGE

11 DESCRIPTION

12 CLINICAL PHARMACOLOGY

- 12.1 Mechanism of Action
- 12.3 Pharmacokinetics

13 NONCLINICAL TOXICOLOGY

- 13.1 Carcinogenesis, Mutagenesis, Impairment of Fertility

14 CLINICAL STUDIES

- 14.1 Bicalutamide 50 mg Daily in Combination With an LHRH-A
- 14.2 Safety Data From Clinical Studies Using Bicalutamide 150 mg

16 HOW SUPPLIED/STORAGE AND HANDLING

- 16.1 Storage and Handling

17 PATIENT COUNSELING INFORMATION

50 MG BOTTLE TEXT

* Sections or subsections omitted from the full prescribing information are not listed.

FULL PRESCRIBING INFORMATION

1 INDICATIONS AND USAGE

Bicalutamide 50 mg daily is indicated for use in combination therapy with a luteinizing hormone-

releasing hormone (LHRH) analog for the treatment of Stage D₂ metastatic carcinoma of the prostate.

Bicalutamide 150 mg daily is not approved for use alone or with other treatments [*see Clinical Studies (14.2)*].

2 DOSAGE AND ADMINISTRATION

The recommended dose for bicalutamide therapy in combination with an LHRH analog is one 50 mg tablet once daily (morning or evening), with or without food. It is recommended that bicalutamide tablets be taken at the same time each day. Treatment with bicalutamide should be started at the same time as treatment with an LHRH analog.

2.1 Dosage Adjustment in Renal Impairment

No dosage adjustment is necessary for patients with renal impairment [*see Use in Specific Populations (8.7)*].

2.2 Dosage Adjustment in Hepatic Impairment

No dosage adjustment is necessary for patients with mild to moderate hepatic impairment. In patients with severe liver impairment (n = 4), although there was a 76% increase in the half-life (5.9 and 10.4 days for normal and impaired patients, respectively) of the active enantiomer of bicalutamide no dosage adjustment is necessary [*see Use in Specific Populations (8.6)*].

3 DOSAGE FORMS AND STRENGTHS

Bicalutamide tablets, 50 mg for oral administration.

4 CONTRAINDICATIONS

4.1 Hypersensitivity

Bicalutamide tablets are contraindicated in any patient who has shown a hypersensitivity reaction to the drug or any of the tablet's components. Hypersensitivity reactions including angioneurotic edema and urticaria have been reported [*see Adverse Reactions (6.2)*].

4.2 Women

Bicalutamide tablets have no indication for women, and should not be used in this population.

4.3 Pregnancy

Bicalutamide tablets may cause fetal harm when administered to a pregnant woman. Bicalutamide tablets are contraindicated in women, including those who are or may become pregnant. There are no studies in pregnant women using bicalutamide. If this drug is used during pregnancy, or if the patient becomes pregnant while taking this drug, the patient should be appraised of the potential hazard to the fetus [*see Use in Specific Populations (8.1)*].

5 WARNINGS AND PRECAUTIONS

5.1 Hepatitis

Rare cases of death or hospitalization due to severe liver injury have been reported postmarketing in association with the use of bicalutamide. Hepatotoxicity in these reports generally occurred within the first three to four months of treatment. Hepatitis or marked increases in liver enzymes leading to drug discontinuation occurred in approximately 1% of bicalutamide patients in controlled clinical trials.

Serum transaminase levels should be measured prior to starting treatment with bicalutamide, at regular intervals for the first four months of treatment, and periodically thereafter. If clinical symptoms or signs suggestive of liver dysfunction occur (e.g., nausea, vomiting, abdominal pain, fatigue, anorexia, “flu-like” symptoms, dark urine, jaundice, or right upper quadrant tenderness), the serum transaminases, in particular the serum ALT, should be measured immediately. If at any time a patient has jaundice, or their ALT rises above two times the upper limit of normal, bicalutamide should be immediately discontinued with close follow-up of liver function.

5.2 Gynecomastia and Breast Pain

In clinical trials with bicalutamide 150 mg as a single agent for prostate cancer, gynecomastia and breast pain have been reported in up to 38% and 39% of patients, respectively.

5.3 Glucose Tolerance

A reduction in glucose tolerance has been observed in males receiving LHRH agonists. This may manifest as diabetes or loss of glycemic control in those with preexisting diabetes. Consideration should therefore be given to monitoring blood glucose in patients receiving bicalutamide in combination with LHRH agonists.

5.4 Laboratory Tests

Regular assessments of serum Prostate Specific Antigen (PSA) may be helpful in monitoring the patient’s response. If PSA levels rise during bicalutamide therapy, the patient should be evaluated for clinical progression. For patients who have objective progression of disease together with an elevated PSA, a treatment-free period of antiandrogen, while continuing the LHRH analog, may be considered.

6 ADVERSE REACTIONS

Because clinical trials are conducted under widely varying conditions, adverse reaction rates observed in the clinical trials of a drug cannot be directly compared to rates in the clinical trials of another drug and may not reflect the rates observed in practice.

6.1 Clinical Trials Experience

In patients with advanced prostate cancer treated with bicalutamide in combination with an LHRH analog, the most frequent adverse reaction was hot flashes (53%).

In the multicenter, double-blind, controlled clinical trial comparing bicalutamide 50 mg once daily with flutamide 250 mg three times a day, each in combination with an LHRH analog, the following adverse reactions with an incidence of 5% or greater, regardless of causality, have been reported.

Table 1. Incidence of Adverse Reactions ($\geq 5\%$ in Either Treatment Group) Regardless of Causality

Body System: Adverse Reaction	Treatment Group Number of Patients (%)	
	Bicalutamide Plus LHRH Analog (n = 401)	Flutamide Plus LHRH Analog (n = 407)
Body as a Whole		
Pain (General)	142 (35)	127 (31)
Back Pain	102 (25)	105 (26)

Asthenia	89 (22)	87 (21)
Pelvic Pain	85 (21)	70 (17)
Infection	71 (18)	57 (14)
Abdominal Pain	46 (11)	46 (11)
Chest Pain	34 (8)	34 (8)
Headache	29 (7)	27 (7)
Flu Syndrome	28 (7)	30 (7)
Cardiovascular		
Hot Flashes	211 (53)	217 (53)
Hypertension	34 (8)	29 (7)
Digestive		
Constipation	87 (22)	69 (17)
Nausea	62 (15)	58 (14)
Diarrhea	49 (12)	107 (26)
Increased Liver Enzyme Test	30 (7)	46 (11)
Dyspepsia	30 (7)	23 (6)
Flatulence	26 (6)	22 (5)
Anorexia	25 (6)	29 (7)
Vomiting	24 (6)	32 (8)
Hemic and Lymphatic		
Anemia	45 (11)	53 (13)
Metabolic and Nutritional		
Peripheral Edema	53 (13)	42 (10)
Weight Loss	30 (7)	39 (10)
Hyperglycemia	26 (6)	27 (7)
Alkaline Phosphatase Increased	22 (5)	24 (6)
Weight Gain	22 (5)	18 (4)
Musculoskeletal		
Bone Pain	37 (9)	43 (11)
Myasthenia	27 (7)	19 (5)
Arthritis	21 (5)	29 (7)
Pathological Fracture	17 (4)	32 (8)
Nervous System		
Dizziness	41 (10)	35 (9)
Paresthesia	31 (8)	40 (10)
Insomnia	27 (7)	39 (10)
Anxiety	20 (5)	9 (2)
Depression	16 (4)	33 (8)
Respiratory System		
Dyspnea	51 (13)	32 (8)
Cough Increased	33 (8)	24 (6)
Pharyngitis	32 (8)	23 (6)
Bronchitis	24 (6)	22 (3)
Pneumonia	18 (4)	19 (5)
Rhinitis	15 (4)	22 (5)

Skin and Appendages		
Rash	35 (9)	30 (7)
Sweating	25 (6)	20 (5)
Urogenital		
Nocturia	49 (12)	55 (14)
Hematuria	48 (12)	26 (6)
Urinary Tract Infection	35 (9)	36 (9)
Gynecomastia	36 (9)	30 (7)
Impotence	27 (7)	35 (9)
Breast Pain	23 (6)	15 (4)
Urinary Frequency	23 (6)	29 (7)
Urinary Retention	20 (5)	14 (3)
Urinary Impaired	19 (5)	15 (4)
Urinary Incontinence	15 (4)	32 (8)

Other adverse reactions (greater than or equal to 2%, but less than 5%) reported in the bicalutamide-LHRH analog treatment group are listed below by body system and are in order of decreasing frequency within each body system regardless of causality.

Body as a Whole: Neoplasm; Neck Pain; Fever; Chills; Sepsis; Hernia; Cyst

Cardiovascular: Angina Pectoris; Congestive Heart Failure; Myocardial Infarct; Heart Arrest; Coronary Artery Disorder; Syncope

Digestive: Melena; Rectal Hemorrhage; Dry Mouth; Dysphagia; Gastrointestinal Disorder; Periodontal Abscess; Gastrointestinal Carcinoma

Metabolic and Nutritional: Edema; BUN Increased; Creatinine Increased; Dehydration; Gout; Hypercholesteremia

Musculoskeletal: Myalgia; Leg Cramps

Nervous: Hypertonia; Confusion; Somnolence; Libido Decreased; Neuropathy; Nervousness

Respiratory: Lung Disorder; Asthma; Epistaxis; Sinusitis

Skin and Appendages: Dry Skin; Alopecia; Pruritus; Herpes Zoster; Skin Carcinoma; Skin Disorder

Special Senses: Cataract specified

Urogenital: Dysuria; Urinary Urgency; Hydronephrosis; Urinary Tract Disorder

Abnormal Laboratory Test Values :

Laboratory abnormalities including elevated AST, ALT, bilirubin, BUN, and creatinine and decreased hemoglobin and white cell count have been reported in both bicalutamide-LHRH analog treated and flutamide-LHRH analog treated patients.

6.2 Postmarketing Experience

The following adverse reactions have been identified during postapproval use of bicalutamide. Because these reactions are reported voluntarily from a population of uncertain size, it is not always possible to reliably estimate their frequency or establish a causal relationship to drug exposure.

Uncommon cases of hypersensitivity reactions, including angioneurotic edema and urticaria [see *Contraindications (4.1)*], and uncommon cases of interstitial lung disease, including interstitial pneumonitis and pulmonary fibrosis, have been reported with bicalutamide.

Reduction in glucose tolerance, manifesting as diabetes or a loss of glycemic control in those with

preexisting diabetes, has been reported during treatment with LHRH agonists.

7 DRUG INTERACTIONS

Clinical studies have not shown any drug interactions between bicalutamide and LHRH analogs (goserelin or leuprolide). There is no evidence that bicalutamide induces hepatic enzymes.

In vitro studies have shown that R-bicalutamide is an inhibitor of CYP 3A4 with lesser inhibitory effects on CYP 2C9, 2C19 and 2D6 activity. Clinical studies have shown that with coadministration of bicalutamide, mean midazolam (a CYP 3A4 substrate) levels may be increased 1.5 fold (for C_{max}) and 1.9 fold (for AUC). Hence, caution should be exercised when bicalutamide is coadministered with CYP 3A4 substrates.

In vitro protein-binding studies have shown that bicalutamide can displace coumarin anticoagulants from binding sites. Prothrombin times should be closely monitored in patients already receiving coumarin anticoagulants who are started on bicalutamide and adjustment of the anticoagulant dose may be necessary.

8 USE IN SPECIFIC POPULATIONS

8.1 Pregnancy

Teratogenic Effects

PREGNANCY CATEGORY X [see *Contraindications (4.3)*]. Based on its mechanism of action, bicalutamide may cause fetal harm when administered to a pregnant woman. Bicalutamide is contraindicated in women, including those who are or may become pregnant. If this drug is used during pregnancy, or if the patient becomes pregnant while taking this drug, the patient should be apprised of the potential hazard to a fetus.

While there are no human data on the use of bicalutamide in pregnancy and bicalutamide is not for use in women, it is important to know that maternal use of an androgen receptor inhibitor could affect development of the fetus.

In animal reproduction studies, male offspring of rats receiving doses of 10 mg/kg/day (approximately 2/3 of clinical exposure at the recommended dose) and above, were observed to have reduced anogenital distance and hypospadias. These pharmacological effects have been observed with other antiandrogens. No other teratogenic effects were observed in rabbits receiving doses up to 200 mg/kg/day (approximately 1/3 of clinical exposure at the recommended dose) or rats receiving doses up to 250 mg/kg/day (approximately 2 times the clinical exposure at the recommended dose).

8.3 Nursing Mothers

Bicalutamide is not indicated for use in women.

8.4 Pediatric Use

The safety and effectiveness of bicalutamide in pediatric patients have not been established.

Labeling describing pediatric clinical studies for bicalutamide is approved for AstraZeneca Pharmaceuticals LP's bicalutamide tablet. However, due to AstraZeneca Pharmaceuticals LP's marketing exclusivity rights, a description of those clinical studies is not approved for this bicalutamide labeling.

8.5 Geriatric Use

In two studies in patients given 50 or 150 mg daily, no significant relationship between age and steady-state levels of total bicalutamide or the active R-enantiomer has been shown.

8.6 Hepatic Impairment

Bicalutamide should be used with caution in patients with moderate-to-severe hepatic impairment. Bicalutamide is extensively metabolized by the liver. Limited data in subjects with severe hepatic impairment suggest that excretion of bicalutamide may be delayed and could lead to further accumulation. Periodic liver function tests should be considered for hepatic-impaired patients on long-term therapy [see *Warnings and Precautions (5.1)*].

No clinically significant difference in the pharmacokinetics of either enantiomer of bicalutamide was noted in patients with mild-to-moderate hepatic disease as compared to healthy controls. However, the half-life of the R-enantiomer was increased approximately 76% (5.9 and 10.4 days for normal and impaired patients, respectively) in patients with severe liver disease (n = 4).

8.7 Renal Impairment

Renal impairment (as measured by creatinine clearance) had no significant effect on the elimination of total bicalutamide or the active R-enantiomer.

8.8 Women

Bicalutamide has not been studied in women.

10 OVERDOSAGE

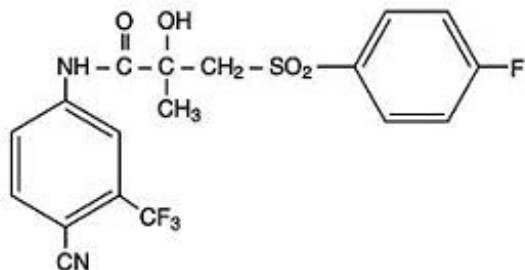
Long-term clinical trials have been conducted with dosages up to 200 mg of bicalutamide daily and these dosages have been well tolerated. A single dose of bicalutamide that results in symptoms of an overdose considered to be life threatening has not been established.

There is no specific antidote; treatment of an overdose should be symptomatic.

In the management of an overdose with bicalutamide, vomiting may be induced if the patient is alert. It should be remembered that, in this patient population, multiple drugs may have been taken. Dialysis is not likely to be helpful since bicalutamide is highly protein bound and is extensively metabolized. General supportive care, including frequent monitoring of vital signs and close observation of the patient, is indicated.

11 DESCRIPTION

Bicalutamide tablets contain 50 mg of bicalutamide, a non-steroidal androgen receptor inhibitor with no other known endocrine activity. The chemical name is propanamide, N-[4-cyano-3-(trifluoromethyl)phenyl]-3-[(4-fluorophenyl)sulfonyl]-2-hydroxy-2-methyl-,(+). The structural formula is:



C₁₈H₁₄N₂O₄F₄S M.W. 430.37

The pKa' is approximately 12. Bicalutamide is a fine white to off-white powder which is practically insoluble in water at 37°C (5 mg per 1000 mL), slightly soluble in chloroform and absolute ethanol, sparingly soluble in methanol, and soluble in acetone and tetrahydrofuran.

Bicalutamide is a racemate with its antiandrogenic activity being almost exclusively exhibited by the R-enantiomer of bicalutamide; the S-enantiomer is essentially inactive.

The inactive ingredients of bicalutamide tablets are: colloidal silicon dioxide, croscarmellose sodium, hypromellose, lactose monohydrate, magnesium stearate, microcrystalline cellulose, polydextrose, polyethylene glycol 4000, povidone, sodium lauryl sulfate, and titanium dioxide.

12 CLINICAL PHARMACOLOGY

12.1 Mechanism of Action

Bicalutamide is a non-steroidal androgen receptor inhibitor. It competitively inhibits the action of androgens by binding to cytosol androgen receptors in the target tissue. Prostatic carcinoma is known to be androgen sensitive and responds to treatment that counteracts the effect of androgen and/or removes the source of androgen.

When bicalutamide is combined with luteinizing hormone-releasing hormone (LHRH) analog therapy, the suppression of serum testosterone induced by the LHRH analog is not affected. However, in clinical trials with bicalutamide as a single agent for prostate cancer, rises in serum testosterone and estradiol have been noted.

In a subset of patients who have been treated with bicalutamide and an LHRH agonist, and who discontinue bicalutamide therapy due to progressive advanced prostate cancer, a reduction in Prostate Specific Antigen (PSA) and/or clinical improvement (antiandrogen withdrawal phenomenon) may be observed.

12.3 Pharmacokinetics

Absorption

Bicalutamide is well-absorbed following oral administration, although the absolute bioavailability is unknown. Coadministration of bicalutamide with food has no clinically significant effect on rate or extent of absorption.

Distribution

Bicalutamide is highly protein-bound (96%) [see *Drug Interactions* (7)].

Metabolism/Elimination

Bicalutamide undergoes stereospecific metabolism. The S (inactive) isomer is metabolized primarily by glucuronidation. The R (active) isomer also undergoes glucuronidation but is predominantly oxidized to an inactive metabolite followed by glucuronidation. Both the parent and metabolite glucuronides are eliminated in the urine and feces. The S-enantiomer is rapidly cleared relative to the R-enantiomer, with the R-enantiomer accounting for about 99% of total steady-state plasma levels.

Pharmacokinetics of the active enantiomer of bicalutamide in normal males and patients with prostate cancer are presented in **Table 3**.

Table 3

Parameter	Mean	Standard Deviation
Normal Males (n = 30)		

Apparent Oral Clearance (L/hr)	0.320	0.103
Single Dose Peak Concentration (mcg/mL)	0.768	0.178
Single Dose Time to Peak Concentration (hours)	31.3	14.6
Half-life (days)	5.8	2.29
Patients with Prostate Cancer (n = 40)		
C _{ss} (mcg/mL)	8.939	3.504

13 NONCLINICAL TOXICOLOGY

13.1 Carcinogenesis, Mutagenesis, Impairment of Fertility

Two-year oral carcinogenicity studies were conducted in both male and female rats and mice at doses of 5, 15 or 75 mg/kg/day of bicalutamide. A variety of tumor target organ effects were identified and were attributed to the antiandrogenicity of bicalutamide, namely, testicular benign interstitial (Leydig) cell tumors in male rats at all dose levels (the steady-state plasma concentration with the 5 mg/kg/day dose is approximately 2/3 human therapeutic concentrations^{*}) and uterine adenocarcinoma in female rats at 75 mg/kg/day (approximately 1 1/2 times the human therapeutic concentrations^{*}). There is no evidence of Leydig cell hyperplasia in patients; uterine tumors are not relevant to the indicated patient population.

A small increase in the incidence of hepatocellular carcinoma in male mice given 75 mg/kg/day of bicalutamide (approximately 4 times human therapeutic concentrations^{*}) and an increased incidence of benign thyroid follicular cell adenomas in rats given 5 mg/kg/day (approximately 2/3 human therapeutic concentrations^{*}) and above were recorded. These neoplastic changes were progressions of non-neoplastic changes related to hepatic enzyme induction observed in animal toxicity studies. Enzyme induction has not been observed following bicalutamide administration in man. There were no tumorigenic effects suggestive of genotoxic carcinogenesis.

A comprehensive battery of both *in vitro* and *in vivo* genotoxicity tests (yeast gene conversion, Ames, *E. coli*, CHO/HGPRT, human lymphocyte cytogenetic, mouse micronucleus, and rat bone marrow cytogenetic tests) has demonstrated that bicalutamide does not have genotoxic activity.

Administration of bicalutamide may lead to inhibition of spermatogenesis. The long-term effects of bicalutamide on male fertility have not been studied.

In male rats dosed at 250 mg/kg/day (approximately 2 times human therapeutic concentrations^{*}), the precoital interval and time to successful mating were increased in the first pairing but no effects on fertility following successful mating were seen. These effects were reversed by 7 weeks after the end of an 11 week period of dosing.

No effects on female rats dosed at 10, 50 and 250 mg/kg/day (approximately 2/3, 1 and 2 times human therapeutic concentrations, respectively^{*}) or their female offspring were observed. Administration of bicalutamide to pregnant females resulted in feminization of the male offspring leading to hypospadias at all dose levels. Affected male offspring were also impotent.

14 CLINICAL STUDIES

14.1 Bicalutamide 50 mg Daily in Combination With an LHRH-A

In a multicenter, double-blind, controlled clinical trial, 813 patients with previously untreated advanced prostate cancer were randomized to receive bicalutamide 50 mg once daily (404 patients) or flutamide 250 mg (409 patients) three times a day, each in combination with LHRH analogs (either goserelin

acetate implant or leuprolide acetate depot).

In an analysis conducted after a median follow-up of 160 weeks was reached, 213 (52.7%) patients treated with bicalutamide-LHRH analog therapy and 235 (57.5%) patients treated with flutamide-LHRH analog therapy had died. There was no significant difference in survival between treatment groups (see **Figure 1**). The hazard ratio for time to death (survival) was 0.87 (95% confidence interval 0.72 to 1.05).

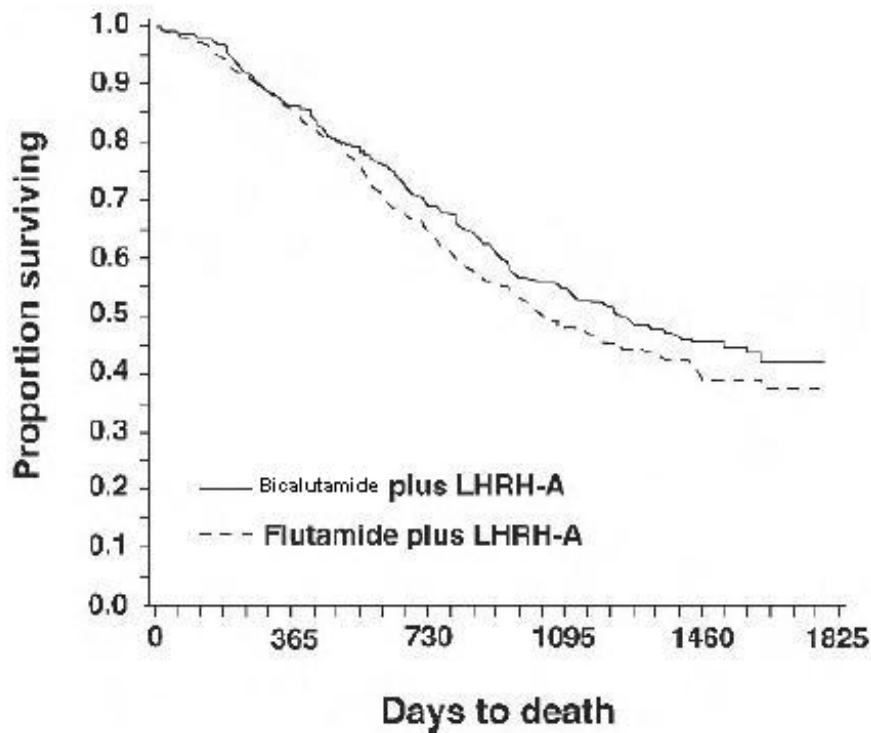


Figure 1 - The Kaplan-Meier Probability of Death for Both Antiandrogen Treatment Groups.

There was no significant difference in time to objective tumor progression between treatment groups (see **Figure 2**). Objective tumor progression was defined as the appearance of any bone metastases or the worsening of any existing bone metastases on bone scan attributable to metastatic disease, or an increase by 25% or more of any existing measurable extraskelatal metastases. The hazard ratio for time to progression of bicalutamide plus LHRH analog to that of flutamide plus LHRH analog was 0.93 (95% confidence interval, 0.79 to 1.10).

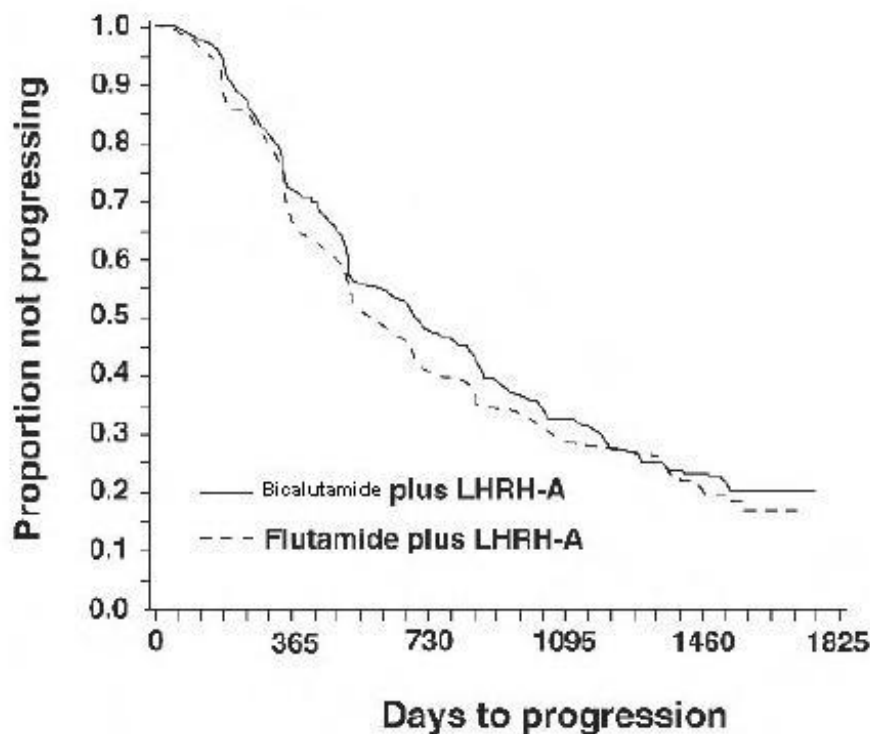


Figure 2 - Kaplan-Meier Curve for Time to Progression for Both Antiandrogen Treatment Groups.

Quality of life was assessed with self-administered patient questionnaires on pain, social functioning, emotional well being, vitality, activity limitation, bed disability, overall health, physical capacity, general symptoms, and treatment related symptoms. Assessment of the Quality of Life questionnaires did not indicate consistent significant differences between the two treatment groups.

14.2 Safety Data From Clinical Studies Using Bicalutamide 150 mg

Bicalutamide 150 mg is not approved for use either alone or with other treatments.

Two identical multicenter, randomized, open-label trials comparing bicalutamide 150 mg daily monotherapy to castration were conducted in patients that had locally advanced (T3-4, NX, MO) or metastatic (M1) prostate cancer.

Monotherapy — M1 Group

Bicalutamide 150 mg daily is not approved for use in patients with M1 cancer of the prostate. Based on an interim analysis of the two trials for survival, the Data Safety Monitoring Board recommended that bicalutamide treatment be discontinued in the M1 patients because the risk of death was 25% (HR 1.25, 95% CI 0.87 to 1.81) and 31% (HR 1.31, 95% CI 0.97 to 1.77) higher in the bicalutamide treated group compared to that in the castrated group, respectively.

Locally Advanced (T3-4, NX, MO) Group

Bicalutamide 150 mg daily is not approved for use in patients with locally advanced (T3-4, NX, MO) cancer of the prostate. Following discontinuation of all M1 patients, the trials continued with the T3-4, NX, MO patients until study completion. In the larger trial (N = 352), the risk of death was 25% (HR 1.25, 95% CI 0.92 to 1.71) higher in the bicalutamide group and in the smaller trial (N = 140), the risk of death was 36% (HR 0.64, 95% CI, 0.39 to 1.03) lower in the bicalutamide group.

In addition to the above two studies, there are three other on-going clinical studies that provide additional safety information for bicalutamide 150 mg, a dose that is not approved for use. These are three multicenter, randomized, double-blind, parallel group trials comparing bicalutamide 150 mg daily monotherapy (adjuvant to previous therapy or under watchful waiting) with placebo, for death or time to disease progression, in a population of 8113 patients with localized or locally advanced prostate

cancer.

Bicalutamide 150 mg daily is not approved for use as therapy for patients with localized prostate cancer who are candidates for watchful waiting. Data from a planned subgroup analysis of two of these trials in 1627 patients with localized prostate cancer who were under watchful waiting, revealed a trend toward decreased survival in the bicalutamide arm after a median follow-up of 7.4 years. There were 294 (37.7%) deaths in the bicalutamide treated patients versus 279 (32.9%) deaths in the placebo treated patients (localized watchful waiting group) for a hazard ratio of 1.16 (95% CI 0.99 to 1.37).

16 HOW SUPPLIED/STORAGE AND HANDLING

Bicalutamide tablets USP are available as follows:

50 mg - white to off-white, film-coated, round tablets, debossed with “93” on one side and “220” on the other side, in bottles of 30 **NDC 54868-6133-0**.

16.1 Storage and Handling

Store at 20° to 25°C (68° to 77°F) [See USP Controlled Room Temperature].

Dispense in a tight, light-resistant container as defined in the USP, with a child-resistant closure (as required).

17 PATIENT COUNSELING INFORMATION

Patients should be informed that therapy with bicalutamide and the LHRH analog should be started at the same time and that they should not interrupt or stop taking these medications without consulting their physician.

During treatment with bicalutamide, somnolence has been reported, and those patients who experience this symptom should observe caution when driving or operating machines.

Patients should be informed that diabetes, or loss of glycemic control in patients with preexisting diabetes has been reported during treatment with LHRH agonists. Consideration should therefore be given to monitoring blood glucose in patients receiving bicalutamide in combination with LHRH agonists.

Patient Information

Bicalutamide Tablets USP

Read the Patient Information that comes with bicalutamide tablets before you start taking them and each time you get a refill. There may be new information. This leaflet does not take the place of talking with your healthcare provider about your medical condition or your treatment.

What are bicalutamide tablets?

Bicalutamide tablets are a prescription medicine called an androgen receptor inhibitor, used in combination with luteinizing hormone-releasing hormone (LHRH) medicines to treat stage D₂ metastatic prostate cancer. It is not known if bicalutamide tablets are safe and effective in children.

Who should not take bicalutamide tablets?

Do not take bicalutamide tablets if:

- you are a woman.
- you are allergic to any of the ingredients in bicalutamide tablets. See the end of this leaflet for a complete list of ingredients.

What should I tell my healthcare provider before taking bicalutamide tablets?

Before you take bicalutamide tablets, tell your healthcare provider about all your medical conditions

including if you:

- are a woman (see "**Who should not take bicalutamide tablets?**")
- are pregnant or think you may be pregnant
- have liver problems
- take a medicine to thin your blood. Ask your healthcare provider or pharmacist if you are not sure if your medicine is a blood thinner.
- have diabetes (poor blood sugar control has been reported in people taking bicalutamide tablets in combination with LHRH medicines)

Tell your healthcare provider about all the medicines you take, including prescription and non-prescription medicines, vitamins and herbal supplements. Bicalutamide tablets and other medicines may affect each other causing side effects. Bicalutamide tablets may affect the way other medicines work, and other medicines may affect how bicalutamide tablets work.

Know the medicines you take. Keep a list of your medicines with you to show your healthcare providers when you get a new medicine.

How should I take bicalutamide tablets?

- Take bicalutamide tablets exactly as prescribed.
- Take bicalutamide tablets at the same time everyday.
- Your treatment with bicalutamide tablets should start at the same time as your treatment with the LHRH medicine.
- If you miss a dose do not take an extra dose, take the next dose at your regular time. Do not take 2 doses at the same time.
- Bicalutamide tablets can be taken with or without food.
- If you take too many bicalutamide tablets, call your healthcare provider or Poison Control Center or go to the nearest hospital emergency room right away.
- Do not stop taking bicalutamide tablets unless your healthcare provider tells you.
- Your healthcare provider may do blood tests while you take bicalutamide tablets.
- Your prostate cancer may get worse while taking bicalutamide tablets in combination with LHRH medicines. Regular monitoring of your prostate cancer with your healthcare provider is important to determine if your disease is worse.

What should I avoid while taking bicalutamide tablets?

Driving and operating machinery. Do not drive, operate machinery, or do other dangerous activities until you know how bicalutamide tablets affect you.

What are the possible side effects of bicalutamide tablets?

Bicalutamide tablets can cause serious side effects.

Get medical help right away, if you have:

- trouble breathing with or without a cough or fever. Some people who take bicalutamide tablets get an inflammation in the lungs called interstitial lung disease.
- **An allergic reaction.** Symptoms of an allergic reaction include: itching of the skin, hives (raised bumps), swelling of the face, lips, tongue, throat, or trouble swallowing.
- Yellowing of the skin and eyes (jaundice), dark urine, right upper stomach pain, nausea, vomiting, tiredness, loss of appetite, chills, fever, whole body pain. These may be symptoms of liver damage.
- Poor blood sugar control can happen in people who take bicalutamide tablets in combination with LHRH medicines.
- enlargement of breast (gynecomastia) and breast pain.

The most common side effects of bicalutamide tablets include:

- hot flashes, or short periods of feeling warm and sweating

- whole body pain in your back, pelvis, stomach
- feeling weak
- constipation
- infection
- nausea
- swelling in your ankles, legs or feet
- diarrhea
- blood in your urine
- waking from sleep to urinate at night
- a decrease in red blood cells (anemia)
- feeling dizzy

Tell your healthcare provider if you have any side effect that bothers you or that does not go away.

These are not all the possible side effects of bicalutamide tablets. For more information, ask your healthcare provider or pharmacist.

Call your doctor for medical advice about side effects. You may report side effects to FDA at 1-800-FDA-1088.

HOW SHOULD I STORE BICALUTAMIDE TABLETS?

Store bicalutamide tablets between 20°C to 25°C (68°F to 77°F).

Keep bicalutamide tablets and all medicines out of the reach of children.

General information about the safe and effective use of bicalutamide tablets.

Medicines are sometimes prescribed for purposes other than those listed in a patient information leaflet. Do not use bicalutamide tablets for a condition for which they were not prescribed. Do not give bicalutamide tablets to other people, even if they have the same symptoms that you have. They may harm them.

This patient information leaflet summarizes the most important information about bicalutamide tablets. If you would like more information about bicalutamide tablets talk with your healthcare provider. You can ask your healthcare provider or pharmacist for information about bicalutamide tablets that is written for health professionals. For more information call 1-888-838-2872, MEDICAL AFFAIRS.

What are the ingredients in bicalutamide tablets USP?

Active ingredients include: bicalutamide

Inactive ingredients include: colloidal silicon dioxide, croscarmellose sodium, hypromellose, lactose monohydrate, magnesium stearate, microcrystalline cellulose, polydextrose, polyethylene glycol 4000, povidone, sodium lauryl sulfate, and titanium dioxide.

Manufactured In Israel By:

TEVA PHARMACEUTICAL IND. LTD.

Jerusalem, 91010, Israel

Manufactured For:

TEVA PHARMACEUTICALS USA

Sellersville, PA 18960

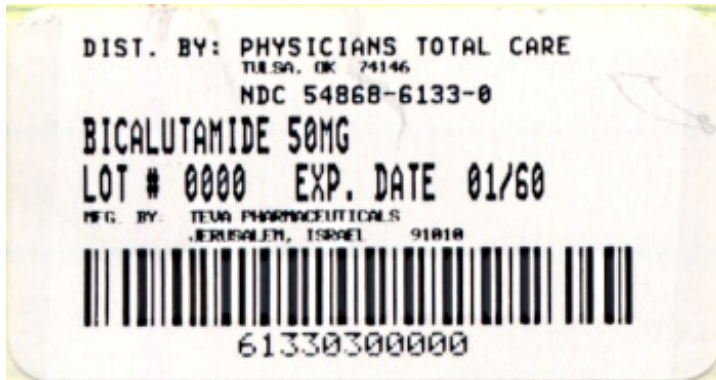
Rev. B 6/2009

Relabeling of "Additional Barcode label" by:

Physicians Total Care, Inc.

Tulsa, OK 74146

CONTAINER LABEL



50 MG BOTTLE TEXT

BICALUTAMIDE

Tablets USP

50 mg

PHARMACIST: PLEASE DISPENSE WITH
ATTACHED PATIENT INFORMATION

LEAFLET

Rx only

BICALUTAMIDE

bicalutamide tablet, film coated

Product Information

Product Type	HUMAN PRESCRIPTION DRUG	Item Code (Source)	NDC:54868-6133(NDC:0093-0220)
Route of Administration	ORAL		

Active Ingredient/Active Moiety

Ingredient Name	Basis of Strength	Strength
BICALUTAMIDE (UNII: A0Z3NAU9DP) (BICALUTAMIDE - UNII:A0Z3NAU9DP)	BICALUTAMIDE	50 mg

Inactive Ingredients

Ingredient Name	Strength
COLLOIDAL SILICON DIOXIDE (UNII: ETJ7Z6XBU4)	
CROSCARMELOSE SODIUM (UNII: M28OL1HH48)	

HYPROMELLOSE (UNII: 3NXW29V3WO)	
LACTOSE MONOHYDRATE (UNII: EWQ57Q8I5X)	
MAGNESIUM STEARATE (UNII: 70097M6I30)	
CELLULOSE, MICROCRYSTALLINE (UNII: OP1R32D61U)	
POLYDEXTROSE (UNII: VH2XOU12IE)	
POLYETHYLENE GLYCOL 4000 (UNII: 4R4HF16D95)	
POVIDONE (UNII: FZ989GH94E)	
SODIUM LAURYL SULFATE (UNII: 368GB5141J)	
TITANIUM DIOXIDE (UNII: 15FIX9V2JP)	

Product Characteristics

Color	WHITE (white to off-white)	Score	no score
Shape	ROUND	Size	7mm
Flavor		Imprint Code	93;220
Contains			

Packaging

#	Item Code	Package Description	Marketing Start Date	Marketing End Date
1	NDC:54868-6133-0	30 in 1 BOTTLE		

Marketing Information

Marketing Category	Application Number or Monograph Citation	Marketing Start Date	Marketing End Date
ANDA	ANDA076932	08/09/2010	

Labeler - Physicians Total Care, Inc. (194123980)

Establishment

Name	Address	ID/FEI	Business Operations
Physicians Total Care, Inc.		194123980	relabel

Revised: 7/2009

Physicians Total Care, Inc.