

GLYCOPYRROLATE- glycopyrrolate injection
Meitheal Pharmaceuticals Inc.

Glycopyrrolate Injection, USP
(For Intramuscular or Intravenous Use)

meitheal®

Rx Only

NOT FOR USE IN NEONATES

CONTAINS BENZYL ALCOHOL

DESCRIPTION

Glycopyrrolate Injection, USP is a synthetic anticholinergic agent. Each 1 mL contains:

Glycopyrrolate, USP 0.2 mg

Water for Injection, USP q.s.

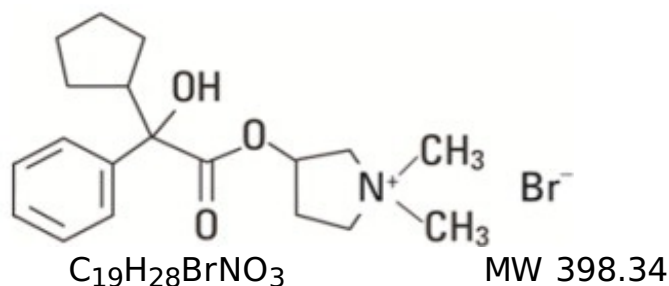
Benzyl Alcohol, NF 0.9% (preservative)

pH adjusted, when necessary, with hydrochloric acid and/or sodium hydroxide.

For Intramuscular (IM) or Intravenous (IV) administration.

Glycopyrrolate is a quaternary ammonium salt with the following chemical name: 3[(cyclopentylhydroxyphenyl)acetyl]oxy-1,1-dimethyl pyrrolidinium bromide. The molecular formula is $C_{19}H_{28}BrNO_3$ and the molecular weight is 398.34.

Its structural formula is as follows:



Glycopyrrolate occurs as a white, odorless crystalline powder. It is soluble in water and alcohol, and practically insoluble in chloroform and ether.

Unlike atropine, glycopyrrolate is completely ionized at physiological pH values.

Glycopyrrolate Injection, USP is a clear, colorless, sterile liquid; pH 2.0 - 3.0. The partition coefficient of glycopyrrolate in a n-octanol/water system is 0.304 ($\log_{10} P = -1.52$) at ambient room temperature (24°C).

CLINICAL PHARMACOLOGY

Glycopyrrolate, like other anticholinergic (antimuscarinic) agents, inhibits the action of

acetylcholine on structures innervated by postganglionic cholinergic nerves and on smooth muscles that respond to acetylcholine but lack cholinergic innervation. These peripheral cholinergic receptors are present in the autonomic effector cells of smooth muscle, cardiac muscle, the sinoatrial node, the atrioventricular node, exocrine glands and, to a limited degree, in the autonomic ganglia. Thus, it diminishes the volume and free acidity of gastric secretions and controls excessive pharyngeal, tracheal, and bronchial secretions.

Glycopyrrolate antagonizes muscarinic symptoms (e.g., bronchorrhea, bronchospasm, bradycardia, and intestinal hypermotility) induced by cholinergic drugs such as the anticholinesterases.

The highly polar quaternary ammonium group of glycopyrrolate limits its passage across lipid membranes, such as the blood-brain barrier, in contrast to atropine sulfate and scopolamine hydrobromide, which are highly non-polar tertiary amines which penetrate lipid barriers easily.

With intravenous injection, the onset of action is generally evident within one minute. Following intramuscular administration, the onset of action is noted in 15 to 30 minutes, with peak effects occurring within approximately 30 to 45 minutes. The vagal blocking effects persist for 2 to 3 hours and the antisialagogue effects persist up to 7 hours, periods longer than for atropine.

Pharmacokinetics

The following pharmacokinetic information and conclusions were obtained from published studies that used nonspecific assay methods.

DISTRIBUTION

The mean volume of distribution of glycopyrrolate was estimated to be 0.42 ± 0.22 L/kg.

METABOLISM

The *in vivo* metabolism of glycopyrrolate in humans has not been studied.

EXCRETION

The mean clearance and mean $T_{1/2}$ values were reported to be 0.54 ± 0.14 L/kg/hr and 0.83 ± 0.13 hr, respectively post IV administration. After IV administration of a 0.2 mg radiolabeled glycopyrrolate, 85% of dose recovered was recovered in urine 48 hours postdose and some of the radioactivity was also recovered in bile. After IM administration of glycopyrrolate to adults, the mean $T_{1/2}$ value is reported to be between 0.55 to 1.25 hrs. Over 80% of IM dose administered was recovered in urine and the bile as unchanged drug and half the IM dose is excreted within 3 hrs. The following table summarizes the mean and standard deviation of pharmacokinetic parameters from a study.

Group	$t_{1/2}$ (hr)	V_{ss} (L/kg)	CL (L/kg/hr)	T_{max} (min)	C_{max} (mcg/L)	AUC (mcg/L•hr)
(6 mcg/kg IV)	0.83 ± 0.27	0.42 ± 0.22	0.54 ± 0.14	-	-	$8.64 \pm 1.49^*$
(8 mcg/kg IM)	-	-	-	27.48 ± 6.12	3.47 ± 1.48	$6.64 \pm 2.33^*$

*0-8 hr

SPECIAL POPULATIONS

Gender

Gender differences in pharmacokinetics of glycopyrrolate have not been investigated.

Renal Impairment

In one study glycopyrrolate was administered IV in uremic patients undergoing renal transplantation. The mean elimination half-life was significantly longer (46.8 minutes) than in healthy patients (18.6 minutes). The mean area-under-the-concentration-time curve (10.6 hr-mcg/L), mean plasma clearance (0.43 L/hr/kg), and mean 3-hour urine excretion (0.7%) for glycopyrrolate were also significantly different than those of controls (3.73 hr-mcg/L, 1.14 L/hr/kg, and 50%, respectively). These results suggest that the elimination of glycopyrrolate is severely impaired in patients with renal failure.

Hepatic Impairment

Pharmacokinetic information in patients with hepatic impairment is unavailable.

Pediatrics

Following IV administration (5 mcg/kg glycopyrrolate) to infants and children, the mean $T_{1/2}$ values were reported to be between 21.6 and 130.0 minutes and between 19.2 and 99.2 minutes, respectively.

INDICATIONS AND USAGE

In Anesthesia

Glycopyrrolate Injection is indicated for use as a preoperative antimuscarinic to reduce salivary, tracheobronchial, and pharyngeal secretions; to reduce the volume and free acidity of gastric secretions; and to block cardiac vagal inhibitory reflexes during induction of anesthesia and intubation. When indicated, Glycopyrrolate Injection may be used intraoperatively to counteract surgically or drug-induced or vagal reflexes associated arrhythmias. Glycopyrrolate protects against the peripheral muscarinic effects (e.g., bradycardia and excessive secretions) of cholinergic agents such as neostigmine and pyridostigmine given to reverse the neuromuscular blockade due to non-depolarizing muscle relaxants.

In Peptic Ulcer

For use in adults as adjunctive therapy for the treatment of peptic ulcer when rapid anticholinergic effect is desired or when oral medication is not tolerated.

CONTRAINDICATIONS

Known hypersensitivity to glycopyrrolate or any of its inactive ingredients.

In addition, in the management of **peptic ulcer** patients, because of the longer duration of therapy, glycopyrrolate injection may be contraindicated in patients with the following

concurrent conditions: glaucoma; obstructive uropathy (for example, bladder neck obstruction due to prostatic hypertrophy); obstructive disease of the gastrointestinal tract (as in achalasia, pyloroduodenal stenosis, etc.); paralytic ileus, intestinal atony of the elderly or debilitated patient; unstable cardiovascular status in acute hemorrhage; severe ulcerative colitis; toxic megacolon complicating ulcerative colitis; myasthenia gravis.

WARNINGS

This drug should be used with great caution, if at all, in patients with glaucoma.

Exposure to excessive amounts of benzyl alcohol has been associated with toxicity (hypotension, metabolic acidosis), particularly in neonates, and an increased incidence of kernicterus, particularly in small preterm infants. There have been rare reports of deaths, primarily in preterm infants, associated with exposure to excessive amounts of benzyl alcohol. The amount of benzyl alcohol from medications is usually considered negligible compared to that received in flush solutions containing benzyl alcohol. Administration of high dosages of medications containing this preservative must take into account the total amount of benzyl alcohol administered. The amount of benzyl alcohol at which toxicity may occur is not known. If the patient requires more than the recommended dosages or other medications containing this preservative, the practitioner must consider the daily metabolic load of benzyl alcohol from these combined sources (see **PRECAUTIONS, Pediatric Use**).

Glycopyrrolate injection may produce drowsiness or blurred vision. The patient should be cautioned regarding activities requiring mental alertness such as operating a motor vehicle or other machinery or performing hazardous work while taking this drug.

In addition, in the presence of fever, high environmental temperature and/or during physical exercise, heat prostration can occur with use of anticholinergic agents including glycopyrrolate (due to decreased sweating), particularly in children and the elderly.

Diarrhea may be an early symptom of incomplete intestinal obstruction, especially in patients with ileostomy or colostomy. In this instance treatment with glycopyrrolate injection would be inappropriate and possibly harmful.

PRECAUTIONS

General

Investigate any tachycardia before giving glycopyrrolate injection since an increase in the heart rate may occur.

Use with caution in patients with: coronary artery disease; congestive heart failure; cardiac arrhythmias; hypertension; hyperthyroidism.

Use with caution in patients with renal disease since the renal elimination of glycopyrrolate may be severely impaired in patients with renal failure. Dosage adjustments may be necessary (see **Pharmacokinetics - Renal Impairment**).

Use glycopyrrolate with caution in the elderly and in all patients with autonomic neuropathy, hepatic disease, ulcerative colitis, prostatic hypertrophy, or hiatal hernia, since anticholinergic drugs may aggravate these conditions.

The use of anticholinergic drugs in the treatment of gastric ulcer may produce a delay in gastric emptying due to antral stasis.

Information for the Patient

Because glycopyrrolate injection may produce drowsiness or blurred vision, the patient should be cautioned not to engage in activities requiring mental alertness and/or visual acuity such as operating a motor vehicle or other machinery, or performing hazardous work while taking this drug (see **WARNINGS**).

The patient also should be cautioned about the use of this drug during exercise or hot weather since overheating may result in heat stroke.

The patient may experience a possible sensitivity of the eyes to light.

Drug Interactions

The concurrent use of glycopyrrolate injection with other anticholinergics or medications with anticholinergic activity, such as phenothiazines, antiparkinson drugs, or tricyclic antidepressants, may intensify the antimuscarinic effects and may result in an increase in anticholinergic side effects.

Concomitant administration of glycopyrrolate injection and potassium chloride in a wax matrix may increase the severity of potassium chloride-induced gastrointestinal lesions as a result of a slower gastrointestinal transit time.

Carcinogenesis, Mutagenesis, Impairment of Fertility

Long-term studies in animals have not been performed to evaluate carcinogenic potential. Studies to evaluate the mutagenic potential of glycopyrrolate have not been conducted. In reproduction studies in rats, dietary administration of glycopyrrolate resulted in diminished rates of conception in a dose-related manner. Other studies in dogs suggest that this may be due to diminished seminal secretion which is evident at high doses of glycopyrrolate.

Pregnancy

TERATOGENIC EFFECTS

Reproduction studies with glycopyrrolate were performed in rats at a dietary dose of approximately 65 mg/kg/day (exposure was approximately 320 times the maximum recommended daily human dose of 2 mg on a mg/m² basis) and rabbits at intramuscular doses of up to 0.5 mg/kg/day (exposure was approximately 5 times the maximum recommended daily human dose on a mg/m² basis). These studies produced no teratogenic effects to the fetus. Because animal reproduction studies are not always predictive of human response, this drug should be used during pregnancy only if clearly needed.

Single-dose studies in humans found that very small amounts of glycopyrrolate passed the placental barrier.

NONTERATOGENIC EFFECTS

Published literature suggest the following regarding the use of glycopyrrolate during

pregnancy. Unlike atropine, glycopyrrolate in normal doses (0.004 mg/kg) does not appear to affect fetal heart rate or fetal heart rate variability to a significant degree. Concentrations of glycopyrrolate in umbilical venous and arterial blood and in the amniotic fluid are low after intramuscular administration to parturients. Therefore, glycopyrrolate does not appear to penetrate through the placental barrier in significant amounts. In reproduction studies in rats, dietary administration of glycopyrrolate resulted in diminished rates of pup survival in a dose-related manner.

Nursing Mothers

It is not known whether this drug is excreted in human milk. Because many drugs are excreted in human milk, caution should be exercised when glycopyrrolate injection is administered to a nursing woman. As with other anticholinergics, glycopyrrolate may cause suppression of lactation (see **ADVERSE REACTIONS**).

Pediatric Use

Due to its benzyl alcohol content, glycopyrrolate injection should not be used in neonates, i.e., patients less than 1 month of age.

Safety and effectiveness in pediatric patients have not been established for the management of peptic ulcer.

Dysrhythmias associated with the use of glycopyrrolate intravenously as a premedicant or during anesthesia have been observed in pediatric patients.

Infants, patients with Down's syndrome, and pediatric patients with spastic paralysis or brain damage may experience an increased response to anticholinergics, thus increasing the potential for side effects.

A paradoxical reaction characterized by hyperexcitability may occur in pediatric patients taking large doses of anticholinergics including glycopyrrolate injection. Infants and young children are especially susceptible to the toxic effects of anticholinergics.

Benzyl alcohol, a component of this drug product, has been associated with serious adverse events and death, particularly in pediatric patients. The "gaspings syndrome," (characterized by central nervous system depression, metabolic acidosis, gasping respirations, and high levels of benzyl alcohol and its metabolites found in the blood and urine) has been associated with benzyl alcohol dosages >99 mg/kg/day in neonates and low-birth-weight neonates. Additional symptoms may include gradual neurological deterioration, seizures, intracranial hemorrhage, hematologic abnormalities, skin breakdown, hepatic and renal failure, hypotension, bradycardia, and cardiovascular collapse. Although normal therapeutic doses of this product deliver amounts of benzyl alcohol that are substantially lower than those reported in association with the "gaspings syndrome," the minimum amount of benzyl alcohol at which toxicity may occur is not known.

Premature and low-birthweight infants, as well as patients receiving high dosages, may be more likely to develop toxicity. Practitioners administering this and other medications containing benzyl alcohol should consider the combined daily metabolic load of benzyl alcohol from all sources.

Geriatric Use

Clinical studies of glycopyrrolate injection did not include sufficient numbers of subjects aged 65 and over to determine whether they respond differently from younger subjects. Other reported clinical experience has not identified differences in responses between the elderly and younger patients. In general, dose selection for an elderly patient should be cautious, usually starting at the low end of the dosing range, reflecting the greater frequency of decreased hepatic, renal, or cardiac function, and of concomitant disease or other therapy.

ADVERSE REACTIONS

Anticholinergics, including glycopyrrolate injection, can produce certain effects, most of which are extensions of their pharmacologic actions. Adverse reactions may include xerostomia (dry mouth); urinary hesitancy and retention; blurred vision and photophobia due to mydriasis (dilation of the pupil); cycloplegia; increased ocular tension; tachycardia; palpitation; decreased sweating; loss of taste; headache; nervousness; drowsiness; weakness; dizziness; insomnia; nausea; vomiting; impotence; suppression of lactation; constipation; bloated feeling; severe allergic reactions including anaphylactic/anaphylactoid reactions; hypersensitivity; urticaria, pruritus, dry skin, and other dermal manifestations; some degree of mental confusion and/or excitement, especially in elderly persons.

In addition, the following adverse events have been reported from post-marketing experience with glycopyrrolate: malignant hyperthermia; cardiac arrhythmias (including bradycardia, ventricular tachycardia, ventricular fibrillation); cardiac arrest; hypertension; hypotension; seizures; and respiratory arrest. Post-marketing reports have included cases of heart block and QTc interval prolongation associated with the combined use of glycopyrrolate and an anticholinesterase. Injection site reactions including pruritus, edema, erythema, and pain have also been reported.

Glycopyrrolate is chemically a quaternary ammonium compound; hence, its passage across lipid membranes, such as the blood-brain barrier is limited in contrast to atropine sulfate and scopolamine hydrobromide. For this reason the occurrence of CNS-related side effects is lower, in comparison to their incidence following administration of anticholinergics which are chemically tertiary amines that can cross this barrier readily.

To report SUSPECTED ADVERSE REACTIONS, contact Meitheal Pharmaceuticals, Inc. at 1-844-824-8426 or FDA at 1-800-FDA-1088 or www.fda.gov/medwatch.

OVERDOSAGE

To combat peripheral anticholinergic effects, a quaternary ammonium anticholinesterase such as neostigmine methylsulfate (which does not cross the blood-brain barrier) may be given intravenously in increments of 0.25 mg in adults. This dosage may be repeated every five to ten minutes until anticholinergic overactivity is reversed or up to a maximum of 2.5 mg. Proportionately smaller doses should be used in pediatric patients. Indication for repetitive doses of neostigmine should be based on close monitoring of the decrease in heart rate and the return of bowel sounds.

If CNS symptoms (e.g., excitement, restlessness, convulsions, psychotic behavior) occur, physostigmine (which does cross the blood-brain barrier) may be used.

Physostigmine 0.5 to 2 mg should be slowly administered intravenously and repeated as necessary up to a total of 5 mg in adults. Proportionately smaller doses should be used in pediatric patients.

To combat hypotension, administer IV fluids and/or pressor agents along with supportive care.

Fever should be treated symptomatically.

Following overdose, a curare-like action may occur, i.e., neuromuscular blockade leading to muscular weakness and possible paralysis. In the event of a curare-like effect on respiratory muscles, artificial respiration should be instituted and maintained until effective respiratory action returns.

DOSAGE AND ADMINISTRATION

NOTE: CONTAINS BENZYL ALCOHOL (see PRECAUTIONS).

Parenteral drug products should be inspected visually for particulate matter and discoloration prior to administration whenever solution and container permit.

For single-dose vials only, discard unused portion.

Glycopyrrolate injection may be administered intramuscularly, or intravenously, without dilution, in the following indications.

Adults

PREANESTHETIC MEDICATION

The recommended dose of glycopyrrolate injection is 0.004 mg/kg by intramuscular injection, given 30 to 60 minutes prior to the anticipated time of induction of anesthesia or at the time the preanesthetic narcotic and/or sedative are administered.

INTRAOPERATIVE MEDICATION

Glycopyrrolate injection may be used during surgery to counteract drug-induced or vagal reflexes and their associated arrhythmias (e.g., bradycardia). It should be administered intravenously as single doses of 0.1 mg and repeated, as needed, at intervals of 2 to 3 minutes. The usual attempts should be made to determine the etiology of the arrhythmia, and the surgical or anesthetic manipulations necessary to correct parasympathetic imbalance should be performed.

REVERSAL OF NEUROMUSCULAR BLOCKADE

The recommended dose of glycopyrrolate injection is 0.2 mg for each 1 mg of neostigmine or 5 mg of pyridostigmine. In order to minimize the appearance of cardiac side effects, the drugs may be administered simultaneously by intravenous injection and may be mixed in the same syringe.

PEPTIC ULCER

The usual recommended dose of glycopyrrolate injection is 0.1 mg administered at 4-hour intervals, 3 or 4 times daily intravenously or intramuscularly. Where more profound

effect is required, 0.2 mg may be given. Some patients may need only a single dose, and frequency of administration should be dictated by patient response up to a maximum of four times daily.

Glycopyrrolate injection is not recommended for the treatment of peptic ulcer in pediatric patients (see **PRECAUTIONS, Pediatric Use**).

Pediatric Patients (see PRECAUTIONS, Pediatric Use)

PREANESTHETIC MEDICATION

The recommended dose of glycopyrrolate injection in pediatric patients is 0.004 mg/kg intramuscularly, given 30 to 60 minutes prior to the anticipated time of induction of anesthesia or at the time the preanesthetic narcotic and/or sedative are administered.

INFANTS

(1 month to 2 years of age) may require up to 0.009 mg/kg.

INTRAOPERATIVE MEDICATION

Because of the long duration of action of glycopyrrolate injection if used as preanesthetic medication, additional glycopyrrolate injection for anticholinergic effect intraoperatively is rarely needed; in the event it is required the recommended pediatric dose is 0.004 mg/kg intravenously, not to exceed 0.1 mg in a single dose which may be repeated, as needed, at intervals of 2 to 3 minutes. The usual attempts should be made to determine the etiology of the arrhythmia, and the surgical or anesthetic manipulations necessary to correct parasympathetic imbalance should be performed.

REVERSAL OF NEUROMUSCULAR BLOCKADE

The recommended pediatric dose of glycopyrrolate injection is 0.2 mg for each 1 mg of neostigmine or 5 mg of pyridostigmine. In order to minimize the appearance of cardiac side effects, the drugs may be administered simultaneously by intravenous injection and may be mixed in the same syringe.

PEPTIC ULCER

Glycopyrrolate injection is not recommended for the treatment of peptic ulcer in pediatric patients (see **PRECAUTIONS, Pediatric Use**).

Diluent Compatibilities

Dextrose 5% and 10% in water, or saline, dextrose 5% in sodium chloride 0.45%, sodium chloride 0.9%, and Ringer's Injection.

Diluent Incompatibilities

Lactated Ringer's solution

Admixture Compatibilities

PHYSICAL COMPATIBILITY

This list does not constitute an endorsement of the clinical utility or safety of co-

administration of glycopyrrolate with these drugs. Glycopyrrolate injection is compatible for mixing and injection with the following injectable dosage forms: atropine sulfate, USP; Antilirium[®] (physostigmine salicylate); Benadryl[®] (diphenhydramine HCl); codeine phosphate, USP; Emete-Con[®] (benzquinamide HCl); hydromorphone HCl, USP; Inapsine[®] (droperidol); Levo-Dromoran[®] (levorphanol tartrate); lidocaine, USP; meperidine HCl, USP; Mestinon[®]/Regonol[®] (pyridostigmine bromide); morphine sulfate, USP; Nubain[®] (nalbuphine HCl); Numorphan[®] (oxymorphone HCl); procaine HCl, USP; promethazine HCl, USP; Prostigmin[®] (neostigmine methylsulfate, USP); scopolamine HBr, USP; Stadol[®] (butorphanol tartrate); Sublimaze[®] (fentanyl citrate); Tigan[®] (trimethobenzamide HCl); and Vistaril[®] (hydroxyzine HCl). Glycopyrrolate injection may be administered via the tubing of a running infusion of normal saline.

Admixture Incompatibilities

PHYSICAL INCOMPATIBILITY

Since the stability of glycopyrrolate is questionable above a pH of 6.0 do not combine glycopyrrolate injection in the same syringe with Brevital[®] (methohexital Na); Chloromycetin[®] (chloramphenicol Na succinate); Dramamine[®] (dimenhydrinate); Nembutal[®] (pentobarbital Na); Pentothal[®] (thiopental Na); Seconal[®] (secobarbital Na); sodium bicarbonate (Abbott); Valium[®] (diazepam); Decadron[®] (dexamethasone Na phosphate); or Talwin[®] (pentazocine lactate). These mixtures will result in a pH higher than 6.0 and may result in gas production or precipitation.

HOW SUPPLIED

Glycopyrrolate Injection, USP is a clear, colorless solution and is supplied as follows:

NDC	Glycopyrrolate Injection, USP (0.2 mg per mL)	Package Factor
71288-414-03	0.2 mg per 1 mL Single-Dose Vial	25 vials per carton
71288-414-04	0.4 mg per 2 mL Single-Dose Vial	25 vials per carton
71288-415-06	1 mg per 5 mL Multi-Dose Vial	25 vials per carton
71288-415-21	4 mg per 20 mL Multi-Dose Vial	10 vials per carton

Storage Conditions

Store at 20° to 25°C (68° to 77°F); excursions permitted to 15° to 30°C (59° to 86°F) [See USP Controlled Room Temperature].

For single-dose vials only, discard unused portion.

Sterile.

The container closure is not made with natural rubber latex.

To report SUSPECTED ADVERSE REACTIONS, contact Meitheal Pharmaceuticals Inc. at 1-844-824-8426 or the FDA at 1-800-FDA-1088 or www.fda.gov/medwatch.

For Product Inquiry call 1-844-824-8426.

Brands listed are the trademarks of their respective owners.

meitheal®
Mfd. for Meitheal Pharmaceuticals
Chicago, IL 60631 (USA)
©2021 Meitheal Pharmaceuticals Inc.

Mfd. by Nanjing King-Friend Biochemical Pharmaceutical Co., Ltd.
Nanjing, China 210061

June 2021

810084-00

Principal Display Panel - Glycopyrrolate Injection, USP 1 mL Container Label

NDC 71288-414-01

Rx Only

Glycopyrrolate Injection, USP

0.2 mg per mL

CONTAINS BENZYL ALCOHOL

For Intramuscular or Intravenous Use

1 mL Single-Dose Vial



Principal Display Panel - Glycopyrrolate Injection, USP 1 mL Carton

NDC 71288-414-03

25 x 1 mL Single-Dose Vials

Rx Only

Glycopyrrolate Injection, USP

0.2 mg per mL

NOT FOR USE IN NEWBORNS

CONTAINS BENZYL ALCOHOL

For Intramuscular or Intravenous Use



Principal Display Panel - Glycopyrrolate Injection, USP 2 mL Container Label

NDC 71288-414-02

Rx Only

Glycopyrrolate Injection, USP

0.4 mg per 2 mL

(0.2 mg per mL)

CONTAINS BENZYL ALCOHOL

For Intramuscular or Intravenous Use

2 mL Single-Dose Vial



Principal Display Panel - Glycopyrrolate Injection, USP 2 mL Carton

NDC 71288-414-04

25 x 2 mL Single-Dose Vials

Rx Only

Glycopyrrolate Injection, USP

0.4 mg per 2 mL

(0.2 mg per mL)

NOT FOR USE IN NEWBORNS

CONTAINS BENZYL ALCOHOL

For Intramuscular or Intravenous Use



Principal Display Panel - Glycopyrrolate Injection, USP 5 mL Container Label

NDC 71288-415-05

Rx Only

Glycopyrrolate Injection, USP

1 mg per 5 mL


(0.2 mg per mL)

NOT FOR USE IN NEWBORNS

CONTAINS BENZYL ALCOHOL

For Intramuscular or Intravenous Use

5 mL Multi-Dose Vial

NDC 71288-415-05	Rx Only	Water for Injection, USP q.s. and Benzyl Alcohol, NF (preservative) 0.9%. pH adjusted, when necessary, with hydrochloric acid and/or sodium hydroxide.		Mfd. for Meitheal Pharmaceuticals 801E3CUS01-00 Chicago, IL 60631 (USA) Made in China ©2021 Meitheal Pharmaceuticals Inc.
Glycopyrrolate Injection, USP	NOT FOR USE IN NEWBORNS	Usual Dosage: See accompanying descriptive literature. Store at 20° to 25°C (68° to 77°F). [See USP.]	Lot:	
1 mg per 5 mL (0.2 mg per mL)	CONTAINS BENZYL ALCOHOL For Intramuscular or Intravenous Use 5 mL Multi-Dose Vial		Exp.:	

Principal Display Panel - Glycopyrrolate Injection, USP 5 mL Carton

NDC 71288-415-06

25 x 5 mL Multi-Dose Vials

Rx Only

Glycopyrrolate Injection, USP

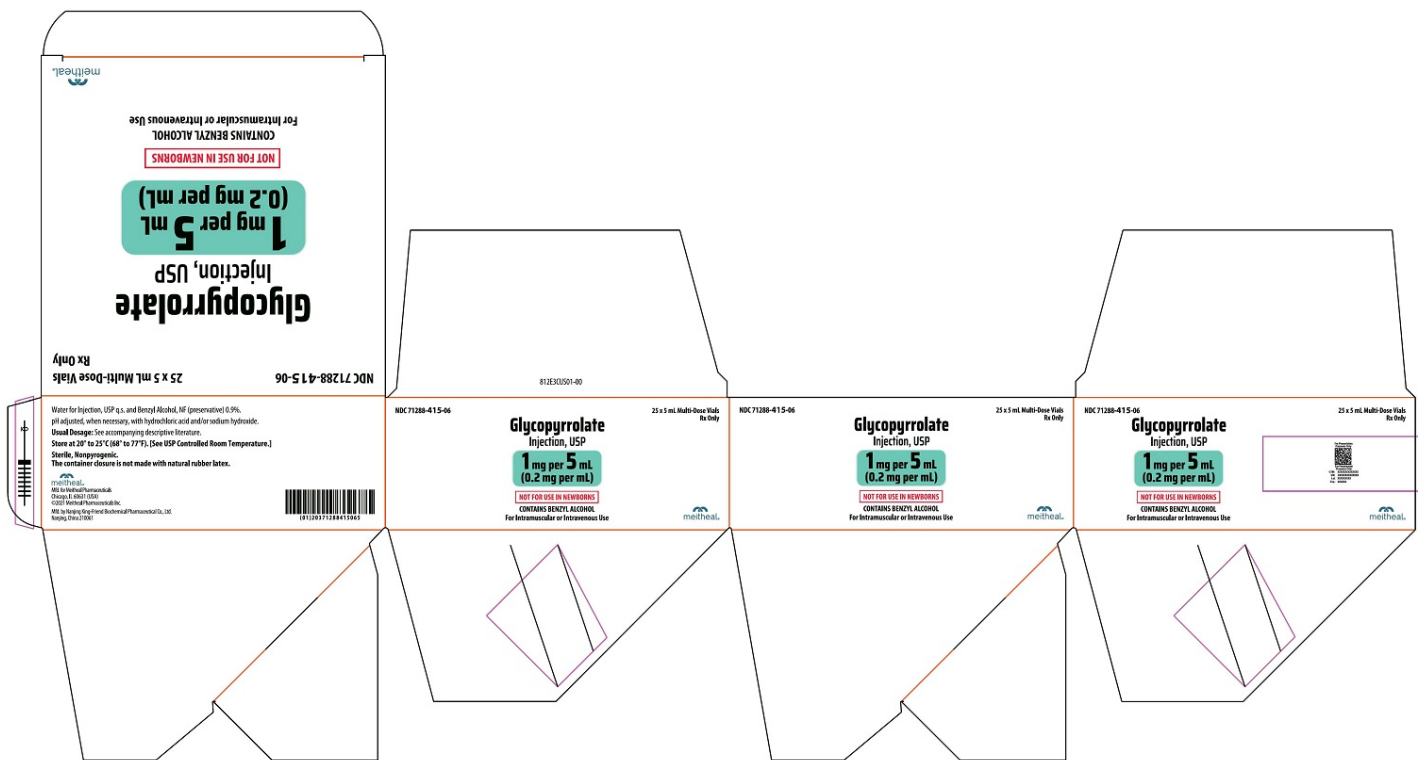
1 mg per 5 mL

(0.2 mg per mL)

NOT FOR USE IN NEWBORNS

CONTAINS BENZYL ALCOHOL

For Intramuscular or Intravenous Use



Principal Display Panel - Glycopyrrolate Injection, USP 20 mL Container Label

NDC 71288-415-20

Rx Only

Glycopyrrolate Injection, USP

4 mg per 20 mL

(0.2 mg per mL)

NOT FOR USE IN NEWBORNS

CONTAINS BENZYL ALCOHOL

For Intramuscular or Intravenous Use

20 mL Multi-Dose Vial

NDC 71288-415-20 Rx Only

Glycopyrrolate
Injection, USP

4 mg per 20 mL
(0.2 mg per mL)

NOT FOR USE IN NEWBORNS

CONTAINS BENZYL ALCOHOL
For Intramuscular or
Intravenous Use
20 mL Multi-Dose Vial

Water for Injection, USP q.s. and Benzyl Alcohol, NF (preservative) 0.9%. pH adjusted, when necessary, with hydrochloric acid and/or sodium hydroxide.

Usual Dosage: See accompanying descriptive literature.

Store at 20° to 25°C (68° to 77°F). [See USP Controlled Room Temperature.]

Sterile, Nonpyrogenic.

This container closure is not made with natural rubber latex.

801E3FUS01-00

meitheal.
Mfd. for Meitheal Pharmaceuticals
Chicago, IL 60631 (USA)
Made in China
©2021 Meitheal Pharmaceuticals Inc.

(01)00371288415207

Lot: |
Exp.: |

Principal Display Panel - Glycopyrrolate Injection, USP 20 mL Carton

NDC 71288-415-21

10 x 20 mL Multi-Dose Vials

Rx Only

Glycopyrrolate Injection, USP

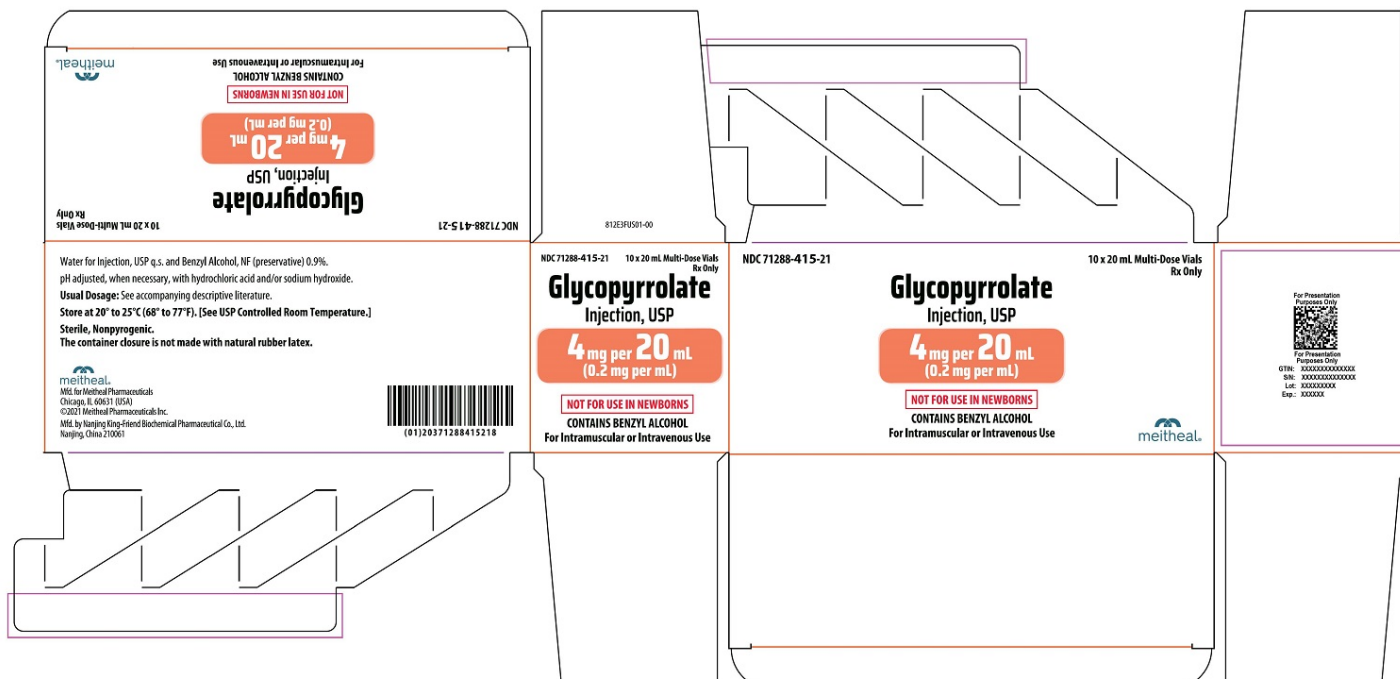
4 mg per 20 mL

(0.2 mg per mL)

NOT FOR USE IN NEWBORNS

CONTAINS BENZYL ALCOHOL

For Intramuscular or Intravenous Use



GLYCOPYRROLATE

glycopyrrolate injection

Product Information

Product Type	HUMAN PRESCRIPTION DRUG	Item Code (Source)	NDC:71288-414
Route of Administration	INTRAVENOUS, INTRAMUSCULAR		

Active Ingredient/Active Moiety

Ingredient Name	Basis of Strength	Strength
glycopyrrolate (UNII: V92S09WP2I) (glycopyrrolate - UNII:A14FB57V1D)	glycopyrrolate	0.2 mg in 1 mL

Inactive Ingredients

Ingredient Name	Strength
benzyl alcohol (UNII: LKG8494WBH)	
hydrochloric acid (UNII: QTT17582CB)	
sodium hydroxide (UNII: 55X04QC32I)	
water (UNII: 059QF0K00R)	

Packaging

#	Item Code	Package Description	Marketing Start Date	Marketing End Date
1	NDC:71288-414-03	25 in 1 CARTON	07/06/2021	
1	NDC:71288-414-01	1 mL in 1 VIAL, SINGLE-DOSE; Type 0: Not a Combination Product		
2	NDC:71288-414-04	25 in 1 CARTON	07/06/2021	

2	NDC:71288-414-02	2 mL in 1 VIAL, SINGLE-DOSE; Type 0: Not a Combination Product		
Marketing Information				
Marketing Category	Application Number or Monograph Citation	Marketing Start Date	Marketing End Date	
ANDA	ANDA212802	07/06/2021		

GLYCOPYRROLATE

glycopyrrolate injection

Product Information			
Product Type	HUMAN PRESCRIPTION DRUG	Item Code (Source)	NDC:71288-415
Route of Administration	INTRAVENOUS, INTRAMUSCULAR		

Active Ingredient/Active Moiety		
Ingredient Name	Basis of Strength	Strength
glycopyrrolate (UNII: V92S09WP2I) (glycopyrrolate - UNII:A14FB57V1D)	glycopyrrolate	0.2 mg in 1 mL

Inactive Ingredients	
Ingredient Name	Strength
benzyl alcohol (UNII: LKG8494WBH)	
hydrochloric acid (UNII: QTT17582CB)	
sodium hydroxide (UNII: 55X04QC32I)	
water (UNII: 059QF0KO0R)	

Packaging				
#	Item Code	Package Description	Marketing Start Date	Marketing End Date
1	NDC:71288-415-06	25 in 1 CARTON	07/06/2021	
1	NDC:71288-415-05	5 mL in 1 VIAL, MULTI-DOSE; Type 0: Not a Combination Product		
2	NDC:71288-415-21	10 in 1 CARTON	07/06/2021	
2	NDC:71288-415-20	20 mL in 1 VIAL, MULTI-DOSE; Type 0: Not a Combination Product		

Marketing Information				
Marketing Category	Application Number or Monograph Citation	Marketing Start Date	Marketing End Date	
ANDA	ANDA212802	07/06/2021		

Labeler - Meitheal Pharmaceuticals Inc. (080548348)

Revised: 11/2023

Meitheal Pharmaceuticals Inc.