

**CVS CHILDRENS COUGH AND COLD- chlorpheniramine maleate,  
dextrometorphan hbr liquid  
CVS PHARMACY**

-----  
**CVS Children's Cough & Cold Drug Facts**

**DRUG FACTS**

**ACTIVE INGREDIENTS (in each 10 mL)**

Chlorpheniramine maleate, USP 2 mg

Dextromethorphan HBr, USP 15 mg

**PURPOSES**

Antihistamine

Cough suppressant

**Uses**

- temporarily relieves cough due to minor throat and bronchial irritation as may occur with a cold
- temporarily relieves these symptoms due to hay fever or other upper respiratory allergies:
  - runny nose
  - sneezing
  - itchy, watery eyes
  - itching of the nose or throat

**WARNINGS**

**Do not use**

- to sedate a child or to make a child sleepy
- if you are now taking a prescription monoamine oxidase inhibitor (MAOI) (certain drugs for depression, psychiatric, or emotional conditions, or Parkinson's disease), or for 2 weeks after stopping the MAOI drug. If you do not know if your prescription drug contains an MAOI, ask a doctor or pharmacist before taking this product.

**Ask a doctor before use if you have**

- trouble urinating due to an enlarged prostate gland
- glaucoma
- a cough that occurs with too much phlegm (mucus)

- a breathing problem or chronic cough that lasts or as occurs with smoking, asthma, chronic bronchitis or emphysema

**Ask a doctor or pharmacist before use if you are**

taking sedatives or tranquilizers

**When using this product**

- **do not use more than directed**
- marked drowsiness may occur
- avoid alcoholic drinks
- alcohol, sedatives, and tranquilizers may increase drowsiness
- be careful when driving a motor vehicle or operating machinery
- excitability may occur, especially in children

**Stop use and ask a doctor if**

cough lasts more than 7 days, comes back, or is accompanied by fever, rash, or persistent headache. These could be signs of a serious condition.

**If pregnant or breast-feeding,**

ask a health professional before use.

**Keep out of reach of children.**

In case of overdose, get medical help or contact a Poison Control Center right away at 1-800-222-1222.

**Directions**

- measure only with dosing cup provided
- keep dosing cup with product
- mL = milliliter
- do not take more than 4 doses in any 24-hour period

<b>age</b>	<b>dose</b>
Children under 6 years	do not use
children 6 to under 12 years	10 mL every 6 hours
adults and children 12 years and older	20 mL every 6 hours

**Other information**

- each 10 mL contains: **sodium 7 mg**
- store at room temperature, Do not refrigerate.

**Inactive ingredients**

citric acid, FD&C red no. 40, Glycerin, lactic acid, natural and artificial flavors, propylene glycol, purified water, sodium benzoate, sodium citrate, sorbitol solution, sucralose

## **QUESTIONS OR COMMENTS?**

**1-866-467-2748**

## **PRODUCT PACKAGING**

Compare to the active ingredients in Children's Robitussin® Cough & Cold Long-Acting\*  
NDC 51316-745-04

### **Children's COUGH & COLD**

Chlorpheniramine Maleate USP 2 mg (Antihistamine)

Dextromethorphan HBr, USP 15 mg (Cough Suppressant)

Long-Acting

Relieves:

- Cough up to 8 hours
  - Runny nose
- For Ages 6 & Over

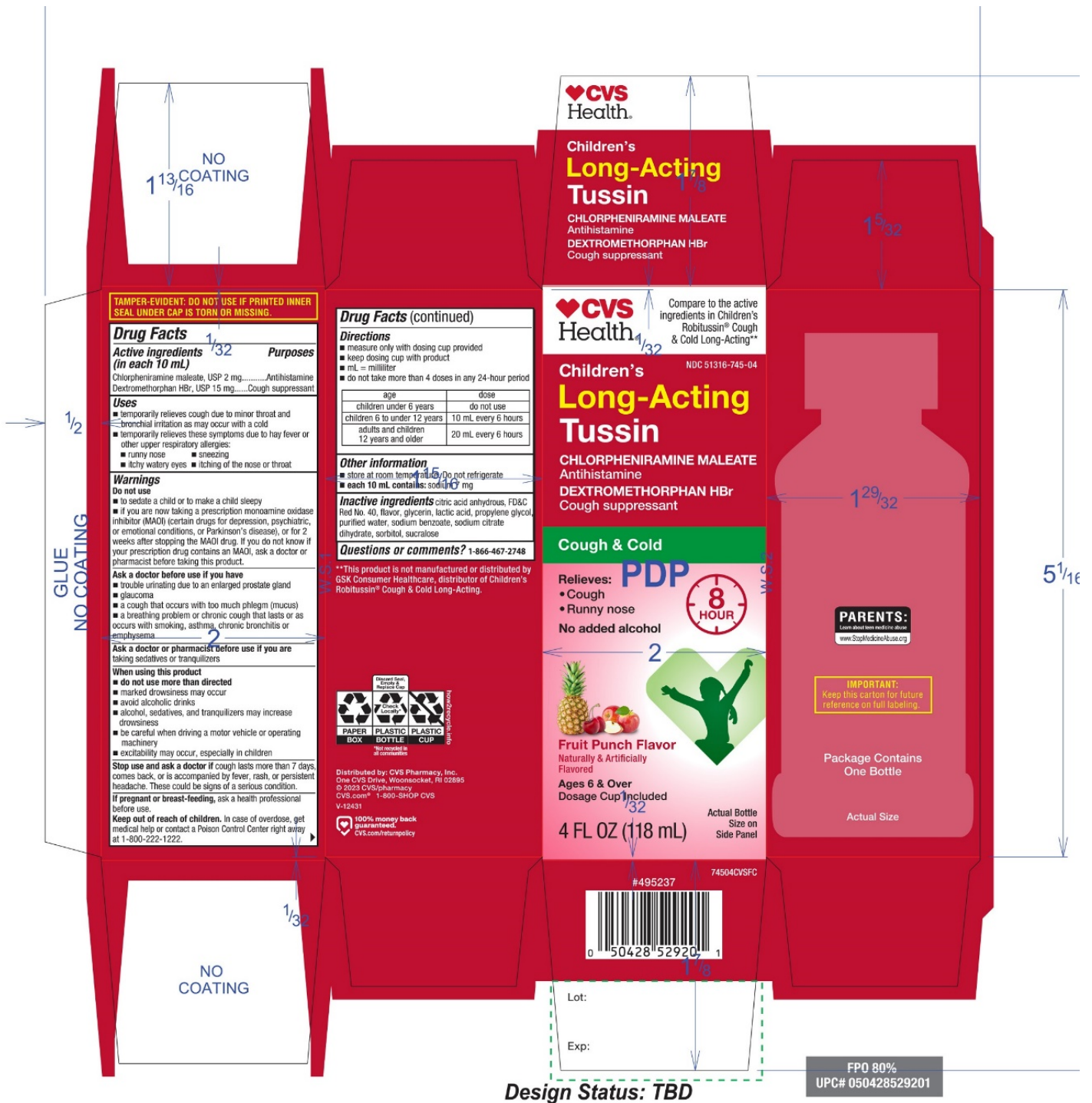
Fruit Punch Flavor

Naturally and Artificially Flavored

4 FL OZ (118 mL)

**IMPORTANT:** Keep this carton for future reference on full labeling

Distributed by:



# CVS CHILDRENS COUGH AND COLD

chlorpheniramine maleate, dextrometorphan hbr liquid

## Product Information

<b>Product Type</b>	HUMAN OTC DRUG	<b>Item Code (Source)</b>	NDC:51316-745
<b>Route of Administration</b>	ORAL		

## Active Ingredient/Active Moiety

Ingredient Name	Basis of Strength	Strength
-----------------	-------------------	----------

<b>chlorpheniramine maleate</b> (UNII: V1Q0O9OJ9Z) (chlorpheniramine - UNII:3U6IO1965U)	chlorpheniramine maleate	2 mg in 10 mL
<b>dextromethorphan hydrobromide</b> (UNII: 9D2RTI9KYH) (dextromethorphan - UNII:7355X3ROTS)	dextromethorphan hydrobromide	15 mg in 10 mL

### Inactive Ingredients

Ingredient Name	Strength
<b>ANHYDROUS CITRIC ACID</b> (UNII: XF417D3PSL)	
<b>FD&amp;C RED NO. 40</b> (UNII: WZB9127XOA)	
<b>GLYCERIN</b> (UNII: PDC6A3C0OX)	
<b>LACTIC ACID, UNSPECIFIED FORM</b> (UNII: 33X04XA5AT)	
<b>PROPYLENE GLYCOL</b> (UNII: 6DC9Q167V3)	
<b>WATER</b> (UNII: 059QF0KO0R)	
<b>SODIUM BENZOATE</b> (UNII: OJ245FE5EU)	
<b>SODIUM CITRATE, UNSPECIFIED FORM</b> (UNII: 1Q73Q2JULR)	
<b>SORBITOL</b> (UNII: 506T60A25R)	
<b>SUCRALOSE</b> (UNII: 96K6UQ3ZD4)	

### Product Characteristics

<b>Color</b>	RED	<b>Score</b>	
<b>Shape</b>		<b>Size</b>	
<b>Flavor</b>	FRUIT PUNCH	<b>Imprint Code</b>	
<b>Contains</b>			

### Packaging

#	Item Code	Package Description	Marketing Start Date	Marketing End Date
1	NDC:51316-745-04	1 in 1 CARTON	02/17/2023	
1		118 mL in 1 BOTTLE; Type 0: Not a Combination Product		

### Marketing Information

Marketing Category	Application Number or Monograph Citation	Marketing Start Date	Marketing End Date
OTC Monograph Drug	M012	02/17/2023	

**Labeler** - CVS PHARMACY (062312574)