

**IBUPROFEN- ibuprofen tablet**  
**Apotheca Inc.**

-----  
**Ibuprofen Tablets**

**BOXED WARNING**

**Cardiovascular Risk**

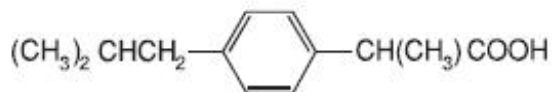
- NSAIDs may cause an increased risk of serious cardiovascular thrombotic events, myocardial infarction, and stroke, which can be fatal. This risk may increase with duration of use. Patients with cardiovascular disease or risk factors for cardiovascular disease may be at greater risk (See **WARNINGS**).
- IBU tablets are contraindicated for treatment of peri-operative pain in the setting of coronary artery bypass graft (CABG) surgery (See **WARNINGS**).

**Gastrointestinal Risk**

- NSAIDs cause an increased risk of serious gastrointestinal adverse events including bleeding, ulceration, and perforation of the stomach or intestines, which can be fatal. These events can occur at any time during use and without warning symptoms. Elderly patients are at greater risk for serious gastrointestinal events. (See **WARNINGS**).

**DESCRIPTION**

IBU tablets contain the active ingredient ibuprofen, which is (±) -2 - (p - isobutylphenyl) propionic acid. Ibuprofen is a white powder with a melting point of 74-77° C and is very slightly soluble in water (<1 mg/mL) and readily soluble in organic solvents such as ethanol and acetone. The structural formula is represented below:



IBU, a nonsteroidal anti-inflammatory drug (NSAID), is available in 400 mg, 600 mg, and 800 mg tablets for oral administration. Inactive ingredients: carnauba wax, colloidal silicon dioxide, croscarmellose sodium, hypromellose, magnesium stearate, microcrystalline cellulose, polydextrose, polyethylene glycol, polysorbate, titanium dioxide.

**CLINICAL PHARMACOLOGY**

IBU tablets contain ibuprofen which possesses analgesic and antipyretic activities. Its mode of action, like that of other NSAIDs, is not completely understood, but may be related to prostaglandin synthetase inhibition.

In clinical studies in patients with rheumatoid arthritis and osteoarthritis, Ibuprofen tablets have been shown to be comparable to aspirin in controlling pain and inflammation and to be associated with a statistically significant reduction in the milder gastrointestinal side effects (see **ADVERSE REACTIONS**). Ibuprofen may be well tolerated in some patients who have had gastrointestinal side effects with aspirin, but these patients when treated with IBU tablets should be carefully followed for signs and symptoms of gastrointestinal ulceration and bleeding. Although it is not definitely known whether ibuprofen causes less peptic ulceration than aspirin, in one study involving 885 patients with rheumatoid arthritis treated for up to one year, there were no reports of gastric ulceration with ibuprofen whereas frank ulceration was reported in 13 patients in the aspirin group (statistically

significant  $p < .001$ ).

Gastroscopic studies at varying doses show an increased tendency toward gastric irritation at higher doses. However, at comparable doses, gastric irritation is approximately half that seen with aspirin. Studies using  $^{51}\text{Cr}$ -tagged red cells indicate that fecal blood loss associated with ibuprofen tablets in doses up to 2400 mg daily did not exceed the normal range, and was significantly less than that seen in aspirin-treated patients.

In clinical studies in patients with rheumatoid arthritis, ibuprofen has been shown to be comparable to indomethacin in controlling the signs and symptoms of disease activity and to be associated with a statistically significant reduction of the milder gastrointestinal (see **ADVERSE REACTIONS**) and CNS side effects.

Ibuprofen may be used in combination with gold salts and/or corticosteroids.

Controlled studies have demonstrated that ibuprofen is a more effective analgesic than propoxyphene for the relief of episiotomy pain, pain following dental extraction procedures, and for the relief of the symptoms of primary dysmenorrhea.

In patients with primary dysmenorrhea, ibuprofen has been shown to reduce elevated levels of prostaglandin activity in the menstrual fluid and to reduce resting and active intrauterine pressure, as well as the frequency of uterine contractions. The probable mechanism of action is to inhibit prostaglandin synthesis rather than simply to provide analgesia.

The ibuprofen in IBU tablets is rapidly absorbed. Peak serum ibuprofen levels are generally attained one to two hours after administration. With single doses up to 800 mg, a linear relationship exists between amount of drug administered and the integrated area under the serum drug concentration vs time curve. Above 800 mg, however, the area under the curve increases less than proportional to increases in dose. There is no evidence of drug accumulation or enzyme induction.

The administration of ibuprofen tablets either under fasting conditions or immediately before meals yields quite similar serum ibuprofen concentration-time profiles. When ibuprofen is administered immediately after a meal, there is a reduction in the rate of absorption but no appreciable decrease in the extent of absorption. The bioavailability of the drug is minimally altered by the presence of food.

A bioavailability study has shown that there was no interference with the absorption of ibuprofen when given in conjunction with an antacid containing both aluminum hydroxide and magnesium hydroxide.

Ibuprofen is rapidly metabolized and eliminated in the urine. The excretion of ibuprofen is virtually complete 24 hours after the last dose. The serum half-life is 1.8 to 2.0 hours.

Studies have shown that following ingestion of the drug, 45% to 79% of the dose was recovered in the urine within 24 hours as metabolite A (25%), (+)-2-[*p*-(2-hydroxymethyl-propyl) phenyl] propionic acid and metabolite B (37%), (+)-2-[*p*-(2-carboxypropyl) phenyl] propionic acid; the percentages of free and conjugated ibuprofen were approximately 1% and 14%, respectively.

## **INDICATIONS AND USAGE**

Carefully consider the potential benefits and risks of ibuprofen tablets and other treatment options before deciding to use ibuprofen. Use the lowest effective dose for the shortest duration consistent with individual patient treatment goals (see **WARNINGS**).

IBU tablets are indicated for relief of the signs and symptoms of rheumatoid arthritis and osteoarthritis.

IBU tablets are indicated for relief of mild to moderate pain.

IBU tablets are also indicated for the treatment of primary dysmenorrhea.

Controlled clinical trials to establish the safety and effectiveness of IBU tablets in children have not been conducted.

## **CONTRAINDICATIONS**

IBU tablets are contraindicated in patients with known hypersensitivity to ibuprofen.

IBU tablets should not be given to patients who have experienced asthma, urticaria, or allergic-type reactions after taking aspirin or other NSAIDs. Severe, rarely fatal, anaphylactoid-like reactions to NSAIDs have been reported in such patients (see **WARNINGS, Anaphylactoid Reactions, and PRECAUTIONS, Preexisting Asthma**).

IBU tablets are contraindicated for the treatment of peri-operative pain in the setting of coronary artery bypass graft (CABG) surgery (see **WARNINGS**).

## **WARNINGS**

### **CARDIOVASCULAR EFFECTS**

#### **Cardiovascular Thrombotic Events**

Clinical trials of several COX-2 selective and nonselective NSAIDs of up to three years duration have shown an increased risk of serious cardiovascular (CV) thrombotic events, myocardial infarction, and stroke, which can be fatal. All NSAIDs, both COX-2 selective and nonselective, may have a similar risk. Patients with known CV disease or risk factors for CV disease may be at greater risk. To minimize the potential risk for an adverse CV event in patients treated with an NSAID, the lowest effective dose should be used for the shortest duration possible. Physicians and patients should remain alert for the development of such events, even in the absence of previous CV symptoms. Patients should be informed about the signs and/or symptoms of serious CV events and the steps to take if they occur.

There is no consistent evidence that concurrent use of aspirin mitigates the increased risk of serious CV thrombotic events associated with NSAID use. The concurrent use of aspirin and an NSAID does not increase the risk of serious GI events (see **GI WARNINGS**).

Two large, controlled clinical trials of a COX-2 selective NSAID for the treatment of pain in the first 10-14 days following CABG surgery found an increased incidence of myocardial infarction and stroke (see **CONTRAINDICATIONS**).

#### **Hypertension**

NSAIDs including IBU tablets, can lead to onset of new hypertension or worsening of preexisting hypertension, either of which may contribute to the increased incidence of CV events. Patients taking thiazides or loop diuretics may have impaired response to these therapies when taking NSAIDs. NSAIDs, including IBU tablets, should be used with caution in patients with hypertension. Blood pressure (BP) should be monitored closely during the initiation of NSAID treatment and throughout the course of therapy.

#### **Congestive Heart Failure and Edema**

Fluid retention and edema have been observed in some patients taking NSAIDs. IBU tablets should be used with caution in patients with fluid retention or heart failure.

#### **Gastrointestinal Effects - Risk of Ulceration, Bleeding, and Perforation**

NSAIDs, including IBU tablets, can cause serious gastrointestinal (GI) adverse events including inflammation, bleeding, ulceration, and perforation of the stomach, small intestine, or large intestine, which can be fatal. These serious adverse events can occur at any time, with or without warning symptoms, in patients treated with NSAIDs. Only one in five patients, who develop a serious upper GI adverse event on NSAID therapy, is symptomatic. Upper GI ulcers, gross bleeding, or perforation caused by NSAIDs occur in approximately 1% of patients treated for 3-6 months, and in about 2-4% of patients treated for one year. These trends continue with longer duration of use, increasing the

likelihood of developing a serious GI event at some time during the course of therapy. However, even short-term therapy is not without risk. NSAIDs should be prescribed with extreme caution in those with a prior history of ulcer disease or gastrointestinal bleeding. Patients with a prior history of peptic ulcer disease and/or gastrointestinal bleeding who use NSAIDs have a greater than 10-fold increased risk for developing a GI bleed compared to patients treated with neither of these risk factors. Other factors that increase the risk of GI bleeding in patients treated with NSAIDs include concomitant use of oral corticosteroids or anticoagulants, longer duration of NSAID therapy, smoking, use of alcohol, older age, and poor general health status. Most spontaneous reports of fatal GI events are in elderly or debilitated patients and therefore, special care should be taken in treating this population. To minimize the potential risk for an adverse GI event in patients treated with an NSAID, the lowest effective dose should be used for the shortest possible duration. Patients and physicians should remain alert for signs and symptoms of GI ulcerations and bleeding during NSAID therapy and promptly initiate additional evaluation and treatment if a serious GI event is suspected. This should include discontinuation of the NSAID until a serious GI adverse event is ruled out. For high-risk patients, alternate therapies that do not involve NSAIDs should be considered.

### **Renal Effects**

Long-term administration of NSAIDs has resulted in renal papillary necrosis and other renal injury. Renal toxicity has also been seen in patients in whom renal prostaglandins have a compensatory role in the maintenance of renal perfusion. In these patients, administration of a NSAID may cause a dose dependent reduction in prostaglandin formation and, secondarily, in renal blood flow, which may precipitate overt renal decompensation. Patients at greatest risk of this reaction are those with impaired renal function, heart failure, liver dysfunction, those taking diuretics and ACE inhibitors, and the elderly. Discontinuation of NSAID therapy is usually followed by recovery to the pretreatment state.

### **Advanced Renal Disease**

No information is available from controlled clinical studies regarding the use of Ibuprofen tablets in patients with advanced renal disease. Therefore, treatment with IBU tablets is not recommended in these patients with advanced renal disease. If IBU tablet therapy must be initiated, close monitoring of the patient's renal function is advisable.

### **Anaphylactoid Reactions**

As with other NSAIDs, anaphylactoid reactions may occur in patients without known prior exposure to IBU tablets. IBU tablets should not be given to patients with the aspirin triad. This symptom complex typically occurs in asthmatic patients who experience rhinitis with or without nasal polyps, or who exhibit severe, potentially fatal bronchospasm after taking aspirin or other NSAIDs (see **CONTRAINDICATIONS and PRECAUTIONS, Preexisting Asthma**). Emergency help should be sought in cases where an anaphylactoid reaction occurs.

### **Skin Reactions**

NSAIDs, including IBU tablets, can cause serious skin adverse events such as exfoliative dermatitis, Stevens-Johnson Syndrome (SJS), and toxic epidermal necrolysis (TEN), which can be fatal. These serious events may occur without warning. Patients should be informed about the signs and symptoms of serious skin manifestations and use of the drug should be discontinued at the first appearance of skin rash or any other sign of hypersensitivity.

### **Pregnancy**

In late pregnancy, as with other NSAIDs, IBU tablets should be avoided because it may cause premature closure of the ductus arteriosus.

## **PRECAUTIONS**

## **General**

IBU tablets cannot be expected to substitute for corticosteroids or to treat corticosteroid insufficiency. Abrupt discontinuation of corticosteroids may lead to disease exacerbation. Patients on prolonged corticosteroid therapy should have their therapy tapered slowly if a decision is made to discontinue corticosteroids.

The pharmacological activity of IBU tablets in reducing fever and inflammation may diminish the utility of these diagnostic signs in detecting complications of presumed noninfectious, painful conditions.

## **Hepatic effects**

Borderline elevations of one or more liver tests may occur in up to 15% of patients taking NSAIDs, including IBU tablets. These laboratory abnormalities may progress, may remain unchanged, or may be transient with continuing therapy. Notable elevations of ALT or AST (approximately three or more times the upper limit of normal) have been reported in approximately 1% of patients in clinical trials with NSAIDs. In addition, rare cases of severe hepatic reactions, including jaundice, fulminant hepatitis, liver necrosis, and hepatic failure, some of them with fatal outcomes have been reported. A patient with symptoms and/or signs suggesting liver dysfunction, or with abnormal liver test values, should be evaluated for evidence of the development of a more severe hepatic reaction while on therapy with IBU tablets. If clinical signs and symptoms consistent with liver disease develop, or if systemic manifestations occur (e.g., eosinophilia, rash, etc.), IBU tablets should be discontinued.

## **Hematological effects**

Anemia is sometimes seen in patients receiving NSAIDs, including IBU tablets. This may be due to fluid retention, occult or gross GI blood loss, or an incompletely described effect upon erythropoiesis. Patients on long-term treatment with NSAIDs, including IBU tablets, should have their hemoglobin or hematocrit checked if they exhibit any signs or symptoms of anemia.

In two postmarketing clinical studies the incidence of a decreased hemoglobin level was greater than previously reported. Decrease in hemoglobin of 1 gram or more was observed in 17.1% of 193 patients on 1600 mg ibuprofen daily (osteoarthritis), and in 22.8% of 189 patients taking 2400 mg of ibuprofen daily (rheumatoid arthritis). Positive stool occult blood tests and elevated serum creatinine levels were also observed in these studies.

NSAIDs inhibit platelet aggregation and have been shown to prolong bleeding time in some patients. Unlike aspirin, their effect on platelet function is quantitatively less, of shorter duration, and reversible.

Patients receiving IBU tablets who may be adversely affected by alterations in platelet function, such as those with coagulation disorders or patients receiving anticoagulants should be carefully monitored.

## **Preexisting asthma**

Patients with asthma may have aspirin-sensitive asthma. The use of aspirin in patients with aspirin-sensitive asthma has been associated with severe bronchospasm, which can be fatal. Since cross reactivity, including bronchospasm, between aspirin and NSAIDs has been reported in such aspirin-sensitive patients, IBU tablets should not be administered to patients with this form of aspirin sensitivity and should be used with caution in patients with preexisting asthma.

## **Ophthalmological effects.**

Blurred and/or diminished vision, scotomata, and/or changes in color vision have been reported. If a patient develops such complaints while receiving IBU tablets, the drug should be discontinued, and the patient should have an ophthalmologic examination which includes central visual fields and color vision testing.

## **Aseptic Meningitis**

Aseptic meningitis with fever and coma has been observed on rare occasions in patients on ibuprofen therapy. Although it is probably more likely to occur in patients with systemic lupus erythematosus and related connective tissue diseases, it has been reported in patients who do not have an underlying chronic disease. If signs or symptoms of meningitis develop in a patient on IBU tablets, the possibility of its being related to IBU tablets should be considered.

### **Information for Patients**

Patients should be informed of the following information before initiating therapy with an NSAID and periodically during the course of ongoing therapy. Patients should also be encouraged to read the NSAID Medication Guide that accompanies each prescription dispensed

- IBU tablets like other NSAIDs, may cause serious CV side effects, such as MI or stroke, which may result in hospitalization and even death. Although serious CV events can occur without warning symptoms, patients should be alert for the signs and symptoms of chest pain, shortness of breath, weakness, slurring of speech, and should ask for medical advice when observing any indicative sign or symptoms. Patients should be apprised of the importance of this follow-up (see **WARNINGS, Cardiovascular Effects**).
- IBU tablets, like other NSAIDs, can cause GI discomfort and, rarely, serious GI side effects, such as ulcers and bleeding, which may result in hospitalization and even death. Although serious GI tract ulcerations and bleeding can occur without warning symptoms, patients should be alert for the signs and symptoms of ulcerations and bleeding, and should ask for medical advice when observing any indicative signs or symptoms including epigastric pain, dyspepsia, melena, and hematemesis. Patients should be apprised of the importance of this follow-up (see **WARNINGS, Gastrointestinal Effects - Risk of Ulceration, Bleeding and Perforation**).
- IBU tablets, like other NSAIDs, can cause serious skin side effects such as exfoliative dermatitis, SJS and TEN, which may result in hospitalization and even death. Although serious skin reactions may occur without warning, patients should be alert for the signs and symptoms of skin rash and blisters, fever, or other signs of hypersensitivity such as itching, and should ask for medical advice when observing any indicative sign or symptoms. Patients should be advised to stop the drug immediately if they develop any type of rash and contact their physicians as soon as possible.
- Patients should promptly report signs or symptoms of unexplained weight gain or edema to their physicians.
- Patients should be informed of the warning signs and symptoms of hepatotoxicity (e.g., nausea, fatigue, lethargy, pruritus, jaundice, right upper quadrant tenderness and “flu-like” symptoms). If these occur, patients should be instructed to stop therapy and seek immediate medical therapy.
- Patients should be informed of the signs of an anaphylactoid reaction (e.g. difficulty breathing, swelling of the face or throat). If these occur, patients should be instructed to seek immediate emergency help (see **WARNINGS**).
- In late pregnancy, as with other NSAIDs, IBU tablets should be avoided because it may cause premature closure of the ductus arteriosus.

### **Laboratory Tests**

Because serious GI tract ulcerations and bleeding can occur without warning symptoms, physicians should monitor for signs or symptoms of GI bleeding. Patients on long-term treatment with NSAIDs should have their CBC and chemistry profile checked periodically. If clinical signs and symptoms consistent with liver or renal disease develop, systemic manifestations occur (e.g., eosinophilia, rash etc.), or abnormal liver tests persist or worsen, IBU tablets should be discontinued.

### **Drug Interactions**

**ACE-inhibitors**: Reports suggest that NSAIDs may diminish the antihypertensive effect of ACE-

inhibitors. This interaction should be given consideration in patients taking NSAIDs concomitantly with ACE-inhibitors.

**Aspirin** When IBU tablets are administered with aspirin, its protein binding is reduced, although the clearance of free IBU tablets is not altered. The clinical significance of this interaction is not known; however, as with other NSAIDs, concomitant administration of ibuprofen and aspirin is not generally recommended because of the potential for increased adverse effects.

### **Diuretics**

Clinical studies, as well as post marketing observations, have shown that Ibuprofen tablets can reduce the natriuretic effect of furosemide and thiazides in some patients. This response has been attributed to inhibition of renal prostaglandin synthesis. During concomitant therapy with NSAIDs, the patient should be observed closely for signs of renal failure (see PRECAUTIONS, Renal Effects), as well as to assure diuretic efficacy.

### **Lithium**

Ibuprofen produced an elevation of plasma lithium levels and a reduction in renal lithium clearance in a study of eleven normal volunteers. The mean minimum lithium concentration increased 15% and the renal clearance of lithium was decreased by 19% during this period of concomitant drug administration. This effect has been attributed to inhibition of renal prostaglandin synthesis by ibuprofen. Thus, when ibuprofen and lithium are administered concurrently, subjects should be observed carefully for signs of lithium toxicity. (Read circulars for lithium preparation before use of such concurrent therapy.)

### **Methotrexate**

NSAIDs have been reported to competitively inhibit methotrexate accumulation in rabbit kidney slices. This may indicate that they could enhance the toxicity of methotrexate. Caution should be used when NSAIDs are administered concomitantly with methotrexate.

### **Warfarin-type anticoagulants**

Several short-term controlled studies failed to show that Ibuprofen tablets significantly affected prothrombin times or a variety of other clotting factors when administered to individuals on coumarin-type anticoagulants. However, because bleeding has been reported when IBU tablets and other NSAIDs have been administered to patients on coumarin-type anticoagulants, the physician should be cautious when administering IBU tablets to patients on anticoagulants. The effects of warfarin and NSAIDs on GI bleeding are synergistic, such that the users of both drugs together have a risk of serious GI bleeding higher than users of either drug alone.

### **H-2 Antagonists**

In studies with human volunteers, co-administration of cimetidine or ranitidine with ibuprofen had no substantive effect on ibuprofen serum concentrations.

### **Pregnancy**

#### **Teratogenic effects: Pregnancy Category C**

Reproductive studies conducted in rats and rabbits have not demonstrated evidence of developmental abnormalities. However, animal reproduction studies are not always predictive of human response. There are no adequate and well-controlled studies in pregnant women. Ibuprofen should be used in pregnancy only if the potential benefit justifies the potential risk to the fetus.

### **Nonteratogenic effects**

Because of the known effects of NSAIDs on the fetal cardiovascular system (closure of ductus arteriosus), use during late pregnancy should be avoided.

## **Labor and Delivery**

In rat studies with NSAIDs, as with other drugs known to inhibit prostaglandin synthesis, an increased incidence of dystocia, delayed parturition, and decreased pup survival occurred. The effects of IBU tablets on labor and delivery in pregnant women are unknown.

## **Nursing Mothers**

It is not known whether this drug is excreted in human milk. Because many drugs are excreted in human milk and because of the potential for serious adverse reactions in nursing infants from IBU tablets, a decision should be made whether to discontinue nursing or discontinue the drug, taking into account the importance of the drug to the mother.

## **Pediatric Use**

Safety and effectiveness of IBU tablets in pediatric patients have not been established.

## **Geriatric Use**

As with any NSAIDs, caution should be exercised in treating the elderly (65 years and older).

## **ADVERSE REACTIONS**

The most frequent type of adverse reaction occurring with Ibuprofen tablets is gastrointestinal. In controlled clinical trials the percentage of patients reporting one or more gastrointestinal complaints ranged from 4% to 16%.

In controlled studies when Ibuprofen tablets were compared to aspirin and indomethacin in equally effective doses, the overall incidence of gastrointestinal complaints was about half that seen in either the aspirin- or indomethacin-treated patients.

Adverse reactions observed during controlled clinical trials at an incidence greater than 1% are listed in the table. Those reactions listed in Column one encompass observations in approximately 3,000 patients. More than 500 of these patients were treated for periods of at least 54 weeks.

Still other reactions occurring less frequently than 1 in 100 were reported in controlled clinical trials and from marketing experience. These reactions have been divided into two categories: Column two of the table lists reactions with therapy with Ibuprofen tablets where the probability of a causal relationship exists; for the reactions in Column three, a causal relationship with Ibuprofen tablets has not been established.

Reported side effects were higher at doses of 3200 mg/day than at doses of 2400 mg or less per day in clinical trials of patients with rheumatoid arthritis. The increases in incidence were slight and still within the ranges reported in the table.



Incidence Greater than 1% (but less than 3%) Probable Causal Relationship*	Precise Incidence Unknown (but less than 1%) Probable Causal Relationship**	Precise Incidence Unknown (but less than 1%) Causal Relationship Unknown**
<b>GASTROINTESTINAL</b> Nausea*, epigastric pain*, heartburn*, diarrhea, abdominal distress, nausea and vomiting, indigestion, constipation, abdominal cramps or Pain, fullness of GI tract (bloating and flatulence)	Gastric or duodenal ulcer with bleeding and/or perforation, gastrointestinal hemorrhage, melena, gastritis, hepatitis, jaundice, abnormal liver function tests; pancreatitis	
<b>CENTRAL NERVOUS SYSTEM</b> Dizziness*, headache, nervousness	Depression, insomnia, confusion, emotional lability, somnolence, aseptic meningitis with fever and coma (see PRECAUTIONS)	Paresthesias, hallucinations, dream abnormalities, pseudotumor cerebri
<b>DERMATOLOGIC</b> Rash*, (including maculopapular type), pruritus	Vesiculobullous eruptions, urticaria, erythema multiforme, Stevens-Johnson syndrome, alopecia	Toxic epidermal necrolysis, photoallergic skin reactions
<b>SPECIAL SENSES</b> Tinnitus	Hearing loss, amblyopia (blurred and/or diminished vision, scotomata and/or changes in color vision) (see PRECAUTIONS)	Conjunctivitis, diplopia, optic neuritis, cataracts
<b>HEMATOLOGIC</b>	Neutropenia, agranulocytosis, aplastic anemia, hemolytic anemia (sometimes Coombs positive), thrombocytopenia with or without purpura, eosinophilia, decreases in hemoglobin and hematocrit (see PRECAUTIONS)	Bleeding episodes (eg epistaxis, menorrhagia)
<b>METABOLIC/ENDOCRINE</b> Decreased appetite		Gynecomastia, hypoglycemic reaction, acidosis
<b>CARDIOVASCULAR</b> Edema, fluid retention (generally responds promptly to drug discontinuation) (see PRECAUTIONS)	Congestive heart failure in patients with marginal cardiac function, elevate blood pressure, palpitations	Arrhythmias (sinus tachycardia, sinus bradycardia)
<b>ALLERGIC</b>	Syndrome of abdominal pain, fever, chills, nausea and vomiting; anaphylaxis; bronchospasm (see CONTRAINDICATIONS)	Serum sickness, lupus erythematosus syndrome, Henoch-Schonlein vasculitis, angioedema
<b>RENAL</b>	Acute renal failure (see PRECAUTIONS), decreased creatinine clearance, polyuria, azotemia, cystitis, Hematuria	Renal papillary necrosis
<b>MISCELLANEOUS</b>	Dry eyes and mouth, gingival ulcer, rhinitis	

\* Reactions occurring in 3% to 9% of patients treated with IBU. (Those reactions occurring in less than 3% of the patients are unmarked.)  
\*\* Reactions are classified under "Probable Causal Relationship (PCR)" if there has been one positive rechallenge or if three or more cases occur which might be causally related. Reactions are classified under "Causal Relationship Unknown" if seven or more events have been reported but the criteria for PCR have not been met.

## OVERDOSAGE

Approximately 11/2 hours after the reported ingestion of from 7 to 10 Ibuprofen tablets (400 mg), a 19-month old child weighing 12 kg was seen in the hospital emergency room, apneic and cyanotic, responding only to painful stimuli. This type of stimulus, however, was sufficient to induce respiration. Oxygen and parenteral fluids were given; a greenish-yellow fluid was aspirated from the stomach with no evidence to indicate the presence of ibuprofen. Two hours after ingestion the child's condition seemed stable; she still responded only to painful stimuli and continued to have periods of apnea lasting from 5 to 10 seconds. She was admitted to intensive care and sodium bicarbonate was administered as well as infusions of dextrose and normal saline. By four hours post-ingestion she could be aroused easily, sit by herself and respond to spoken commands. Blood level of ibuprofen was 102.9 µg/mL approximately 8 1/2 hours after accidental ingestion. At 12 hours she appeared to be completely recovered.

In two other reported cases where children (each weighing approximately 10 kg) accidentally, acutely ingested approximately 120 mg/kg, there were no signs of acute intoxication or late sequelae. Blood level in one child 90 minutes after ingestion was 700 µg/mL —about 10 times the peak levels seen in absorption-excretion studies. A 19-year old male who had taken 8,000 mg of ibuprofen over a period of a few hours complained of dizziness, and nystagmus was noted. After hospitalization, parenteral hydration and three days bedrest, he recovered with no reported sequelae.

In cases of acute overdosage, the stomach should be emptied by vomiting or lavage, though little drug will likely be recovered if more than an hour has elapsed since ingestion. Because the drug is acidic and is excreted in the urine, it is theoretically beneficial to administer alkali and induce diuresis. In addition to supportive measures, the use of oral activated charcoal may help to reduce the absorption and reabsorption of Ibuprofen tablets.

## DOSAGE AND ADMINISTRATION

Carefully consider the potential benefits and risks of IBU tablets and other treatment options before deciding to use IBU tablets. Use the lowest effective dose for the shortest duration consistent with individual patient treatment goals (see WARNINGS).

After observing the response to initial therapy with IBU tablets, the dose and frequency should be adjusted to suit an individual patient's needs. Do not exceed 3200 mg total daily dose. If gastrointestinal complaints occur, administer IBU tablets with meals or milk.

**Rheumatoid arthritis and osteoarthritis, including flare-ups of chronic disease:**

Suggested Dosage: 1200 mg-3200 mg daily (400 mg, 600 mg or 800 mg tid or qid). Individual patients may show a better response to 3200 mg daily, as compared with 2400 mg, although in well-controlled clinical trials patients on 3200 mg did not show a better mean response in terms of efficacy. Therefore, when treating patients with 3200 mg/day, the physician should observe sufficient increased clinical benefits to offset potential increased risk. The dose should be tailored to each patient, and may be lowered or raised depending on the severity of symptoms either at time of initiating drug therapy or as the patient responds or fails to respond. In general, patients with rheumatoid arthritis seem to require higher doses of IBU tablets than do patients with osteoarthritis.

The smallest dose of IBU tablets that yields acceptable control should be employed. A linear blood level dose-response relationship exists with single doses up to 800 mg (See CLINICAL PHARMACOLOGY for effects of food on rate of absorption).

The availability of three tablet strengths facilitates dosage adjustment. In chronic conditions, a therapeutic response to therapy with IBU tablets is sometimes seen in a few days to a week but most often is observed by two weeks. After a satisfactory response has been achieved, the patient's dose should be reviewed and adjusted as required.

**Mild to moderate pain:**

400 mg every 4 to 6 hours as necessary for relief of pain. In controlled analgesic clinical trials, doses of Ibuprofen tablets greater than 400 mg were no more effective than the 400 mg dose.

**Dysmenorrhea:**

For the treatment of dysmenorrhea, beginning with the earliest onset of such pain, IBU tablets should be given in a dose of 400 mg every 4 hours as necessary for the relief of pain.

**HOW SUPPLIED**

IBU tablets are available in the following strengths, colors and sizes:

400 mg (white, oval, debossed 4I)

NDC 12634-171-00 Bottles of 10

NDC 12634-171-01 Bottles of 100

NDC 12634-171-09 Bottles of 35

NDC 12634-171-40 Bottles of 40

NDC 12634-171-42 Bottles of 42

NDC 12634-171-50 Bottles of 50

NDC 12634-171-52 Blister Pack of 12

NDC 12634-171-54 Blister Pack of 14

NDC 12634-171-57 Blister Pack of 20

NDC 12634-171-59 Blister Pack of 30

NDC 12634-171-60 Bottles of 60

NDC 12634-171-61 Blister Pack of 10

NDC 12634-171-63 Blister Pack of 3  
NDC 12634-171-66 Blister Pack of 6  
NDC 12634-171-67 Blister Pack of 7  
NDC 12634-171-69 Blister Pack of 9  
NDC 12634-171-71 Bottles of 30  
NDC 12634-171-74 Bottles of 24  
NDC 12634-171-78 Bottles of 28  
NDC 12634-171-79 Bottles of 25  
NDC 12634-171-80 Bottles of 20  
NDC 12634-171-81 Bottles of 21  
NDC 12634-171-82 Bottles of 12  
NDC 12634-171-85 Bottles of 15  
NDC 12634-171-91 Blister Pack of 1  
NDC 12634-171-94 Bottles of 4  
NDC 12634-171-95 Bottles of 5  
NDC 12634-171-96 Bottles of 6  
600 mg (white, caplet, debossed 6I)  
NDC 12634-191-00 Bottles of 10  
NDC 12634-191-01 Bottles of 100  
NDC 12634-191-09 Bottles of 35  
NDC 12634-191-40 Bottles of 40  
NDC 12634-191-42 Bottles of 42  
NDC 12634-191-50 Bottles of 50  
NDC 12634-191-52 Blister Pack of 12  
NDC 12634-191-54 Blister Pack of 14  
NDC 12634-191-57 Blister Pack of 20  
NDC 12634-191-59 Blister Pack of 30  
NDC 12634-191-60 Bottles of 60  
NDC 12634-191-61 Blister Pack of 10  
NDC 12634-191-63 Blister Pack of 3  
NDC 12634-191-66 Blister Pack of 6  
NDC 12634-191-67 Blister Pack of 7  
NDC 12634-191-69 Blister Pack of 9  
NDC 12634-191-71 Bottles of 30  
NDC 12634-191-74 Bottles of 24  
NDC 12634-191-78 Bottles of 28  
NDC 12634-191-79 Bottles of 25

NDC 12634-191-80 Bottles of 20  
NDC 12634-191-81 Bottles of 21  
NDC 12634-191-82 Bottles of 12  
NDC 12634-191-85 Bottles of 15  
NDC 12634-191-91 Blister Pack of 1  
NDC 12634-191-94 Bottles of 4  
NDC 12634-191-95 Bottles of 5  
NDC 12634-191-96 Bottles of 6  
800 mg (white, caplet, debossed 8I)  
NDC 12634-682-00 Bottles of 10  
NDC 12634-682-01 Bottles of 100  
NDC 12634-682-09 Bottles of 35  
NDC 12634-682-40 Bottles of 40  
NDC 12634-682-42 Bottles of 42  
NDC 12634-682-50 Bottles of 50  
NDC 12634-682-52 Blister Pack of 12  
NDC 12634-682-54 Blister Pack of 14  
NDC 12634-682-57 Blister Pack of 20  
NDC 12634-682-59 Blister Pack of 30  
NDC 12634-682-60 Bottles of 60  
NDC 12634-682-61 Blister Pack of 10  
NDC 12634-682-63 Blister Pack of 3  
NDC 12634-682-66 Blister Pack of 6  
NDC 12634-682-67 Blister Pack of 7  
NDC 12634-682-69 Blister Pack of 9  
NDC 12634-682-71 Bottles of 30  
NDC 12634-682-74 Bottles of 24  
NDC 12634-682-78 Bottles of 28  
NDC 12634-682-79 Bottles of 25  
NDC 12634-682-80 Bottles of 20  
NDC 12634-682-81 Bottles of 21  
NDC 12634-682-82 Bottles of 12  
NDC 12634-682-85 Bottles of 15  
NDC 12634-682-91 Blister Pack of 1  
NDC 12634-682-94 Bottles of 4  
NDC 12634-682-95 Bottles of 5  
NDC 12634-682-96 Bottles of 6

Store at room temperature. Avoid excessive heat 40°C (104°F).

Manufactured by:

**Dr. Reddy's Laboratories Louisiana, LLC**

Shreveport, LA 71106 USA

Revised, October 2013

Repackaged and Distributed by:

**Apotheca Inc.**

Phoenix, AZ 85006

## **MEDICATION GUIDE**

### **Medication Guide for Non-Steroidal Anti-Inflammatory Drugs (NSAIDs)**

(See the end of this Medication Guide for a list of prescription NSAID medicines.)

#### **What is the most important information I should know about medicines called Non-Steroidal Anti-Inflammatory Drugs (NSAIDs)?**

**NSAID medicines may increase the chance of a heart attack or stroke that can lead to death.**

This chance increases:

- with longer use of NSAID medicines
- in people who have heart disease

**NSAID medicines should never be used right before or after a heart surgery called a “coronary artery bypass graft (CABG).”**

**NSAID medicines can cause ulcers and bleeding in the stomach and intestines at any time during treatment. Ulcers and bleeding:**

- can happen without warning symptoms
- may cause death

**The chance of a person getting an ulcer or bleeding increases with:**

- taking medicines called “corticosteroids”
- drinking alcohol and “anticoagulants”
- older age
- longer use
- having poor health
- smoking

**NSAID medicines should only be used:**

- exactly as prescribed
- for the shortest time needed
- at the lowest dose possible for your treatment

#### **What are Non-Steroidal Anti-Inflammatory Drugs (NSAIDs) ?**

NSAID medicines are used to treat pain and redness, swelling, and heat (inflammation) from medical conditions such as:

- different types of arthritis
- menstrual cramps and other types of short-term pain

**Who should not take a Non-Steroidal Anti-Inflammatory Drug (NSAID) ? Do not take an NSAID medicine:**

- if you had an asthma attack, hives, or other allergic reaction with aspirin or any other NSAID medicine
- for pain right before or after heart bypass surgery

**Tell your healthcare provider:**

- about all of your medical conditions
- about all of the medicines you take. NSAIDs and some other medicines can interact with each other and cause serious side effects.

**Keep a list of your medicines to show to your healthcare provider and pharmacist.**

- if you are pregnant. **NSAID medicines should not be used by pregnant women late in their pregnancy.**
- if you are breastfeeding. **Talk to your doctor.**

**What are the possible side effects of Non-Steroidal Anti-Inflammatory Drugs (NSAIDs)?**

---

**Serious side effect**

- heart attack
- stroke
- high blood pressure
- heart failure from body swelling (fluid retention)
- kidney problems including kidney failure
- bleeding and ulcers in the stomach and intestine
- low red blood cells (anemia)
- life-threatening skin reactions
- life-threatening allergic reactions
- liver problems including liver failure
- asthma attacks in people who have asthma

**Other side effect include**

- stomach pain
  - constipation
  - diarrhea
  - gas
  - heartburn
  - nausea
  - vomiting
  - dizziness
- 

**Get emergency help right away if you have any of the following symptoms:**

- shortness of breath or trouble breathing • slurred speech
- chest pain • swelling of the face or throat
- weakness in one part or side of your body

**Stop your NSAID medicine and call your healthcare provider right away if you have any of the following symptoms:**

- 
- |                                   |   |
|-----------------------------------|---|
| • nausea                          | • vomit blood   |
| • more tired or weaker than usual | • there is blood in your bowel movement or sticky it is black and sticky like tar |
| • itching                         | • skin rash or blister with fever   |
| • your skin or eyes look yellow   | • unusual weight gain   |
| • stomach pain                    | • swelling of the arms and legs, hands and feet                                   |
| • flu-like symptoms               |   |
- 

These are not all the side effects with NSAID medicines. Talk to your healthcare provider or

pharmacist for more information about NSAID medicines.

**Call your doctor for medical advice about side effects. You may report side effects to FDA at 1-800-FDA-1088. Other information about Non-Steroidal Anti-Inflammatory Drugs (NSAIDs)**

- Aspirin is an NSAID medicine but it does not increase the chance of a heart attack. Aspirin can cause bleeding in the brain, stomach, and intestines. Aspirin can also cause ulcers in the stomach and intestines.
- Some of these NSAID medicines are sold in lower doses without a prescription (over-the-counter) Talk to your healthcare provider before using over-the-counter NSAIDs for more than 10 days.

**NSAID medicines that need a prescription**

Generic	Trade Name
Celecoxib	Celebrex
Diclofenac	Cataflam, Voltaren, Arthrotec (combined with misoprostol)
Diflunisal	Dolobid
Etodolac	Lodine, Lodine XL
Fenoprofen	Nalfon, Nalfon 200
Flurbiprofen	Ansaid
Ibuprofen	Motrin, Tab-Profen, Vicoprofen* (combined with hydrocodone), Combunox (combined with oxycodone)
Indomethacin	Indocin, Indocin SR, Indo-Lemmon, Indomethagan
Ketoprofen	Oruvail
Ketorolac	Toradol
Mefenamic Acid	Ponstel
Meloxicam	Mobic
Nabumetone	Relafen
Naproxen	Naprosyn, Anaprox, Anaprox DS, EC-Naprosyn, Naprelan, Naprapac (copackaged with lansoprazole)
Oxaprozin	Daypro
Piroxicam	Feldene
Sulindac	Clinoril
Tolmetin	Tolectin, Tolectin DS, Tolectin 600

\*Vicoprofen contains the same dose of ibuprofen as over-the-counter (OTC) NSAIDS, and is usually used for less than 10 days to treat pain. The OTC NSAID label warns that long term continuous use may increase the risk of heart attack or stroke

**PACKAGE LABEL.PRINCIPAL DISPLAY PANEL SECTION**

PRINICIPAL DISPLAY PANEL 400 mg -30 count

<p>See insert for full prescribing information.</p> <p><b>Ibuprofen 400mg</b> NDC: 12634-171-71    <u>30 Tablets</u> LOT:                      EXP:</p> <p><b>Ibuprofen 400mg</b> NDC: 12634-171-71    <u>30 Tablets</u> LOT:                      EXP:</p> <p><b>Ibuprofen 400mg</b> NDC: 12634-171-71    <u>30 Tablets</u> LOT:                      EXP:</p> <p>Repackaged &amp; Distributed by: Apotheca, Inc Phoenix, AZ 85006</p>	 <p>93522017171*</p>	<p><b>Ibuprofen 400mg</b> <b>30 Tablets</b> <b>NDC: 12634-171-71</b></p> <p>LOT:                      EXP:</p> <p>COMPARE TO:        MOTRIN® Rx Only</p> <p>Dispensed In A Tight, Light Resistant Container, As Defined In The USP, Using A Child Resistant Closure.</p> <p><small>WHOLESALE PHARMACEUTICALS</small> <b>APOTHECA, INC.</b> <small>SPECIALISTS IN GENERIC PHARMACEUTICALS</small> Manufacturing • Distribution • Private Label REV. DATE: 12/2015</p>	<p><b>BULK SOURCE DATA</b>      <b>PRODUCT ID:</b> Manufactured By:          Debossed "41" Dr. Reddy's Laboratories      Bulk NDC: 55111-682-05 Shreveport, LA 71106</p> <p>Call your doctor for Medical Advice about Side Effects. You may Report Side Effects to FDA at: 1-800-FDA-1088</p> <p>Obtain Medical Advice before taking non-prescription drugs, some may effect the action of this medication. Do not use if you are pregnant, plan to become pregnant or while breast feeding. Take With FOOD. May cause drowsiness. Alcohol may intensify this effect. Keep this and all Medication Out of the Reach of Children.</p> <p><b>Directions:</b> Take ____ tablet(s) by mouth ____ times a day, as directed by physician. Store at 20° to 25°C(68° to 77°F)[see USP Controlled Room Temperature]</p>
---	---	--	--

**PACKAGE LABEL.PRINCIPAL DISPLAY PANEL SECTION**

PRINCIPAL DISPLAY PANEL 600 mg -30 count

<p>See insert for full prescribing information.</p> <p><b>Ibuprofen 600mg</b> NDC: 12634-191-71    <u>30 Tablets</u> LOT:                      EXP:</p> <p><b>Ibuprofen 600mg</b> NDC: 12634-191-71    <u>30 Tablets</u> LOT:                      EXP:</p> <p><b>Ibuprofen 600mg</b> NDC: 12634-191-71    <u>30 Tablets</u> LOT:                      EXP:</p> <p>Repackaged &amp; Distributed by: Apotheca, Inc Phoenix, AZ 85006</p>	 <p>93522019171*</p>	<p><b>Ibuprofen 600mg</b> <b>30 Tablets</b> <b>NDC: 12634-191-71</b></p> <p>LOT:                      EXP:</p> <p>COMPARE TO:        MOTRIN® Rx Only</p> <p>Dispensed In A Tight, Light Resistant Container, As Defined In The USP, Using A Child Resistant Closure.</p> <p><small>WHOLESALE PHARMACEUTICALS</small> <b>APOTHECA, INC.</b> <small>SPECIALISTS IN GENERIC PHARMACEUTICALS</small> Manufacturing • Distribution • Private Label REV. DATE: 12/2015</p>	<p><b>BULK SOURCE DATA</b>      <b>PRODUCT ID:</b> Manufactured By:          Debossed "61" Dr. Reddy's Laboratories      Bulk NDC: 55111-683-05 Shreveport, LA 71106</p> <p>Call your doctor for Medical Advice about Side Effects. You may Report Side Effects to FDA at: 1-800-FDA-1088</p> <p>Obtain Medical Advice before taking non-prescription drugs, some may effect the action of this medication. Do not use if you are pregnant, plan to become pregnant or while breast feeding. Take With FOOD. May cause drowsiness. Alcohol may intensify this effect. Keep this and all Medication Out of the Reach of Children.</p> <p><b>Directions:</b> Take ____ tablet(s) by mouth ____ times a day, as directed by physician. Store at 20° to 25°C(68° to 77°F)[see USP Controlled Room Temperature]</p>
---	--	--	--

**PACKAGE LABEL.PRINCIPAL DISPLAY PANEL SECTION**

PRINCIPAL DISPLAY PANEL 800 mg - 30 count



See insert for full prescribing information.

**Ibuprofen 800mg**  
NDC: 12634-682-71 30 Tablets  
LOT: EXP:

**Ibuprofen 800mg**  
NDC: 12634-682-71 30 Tablets  
LOT: EXP:

**Ibuprofen 800mg**  
NDC: 12634-682-71 30 Tablets  
LOT: EXP:

93522068271\*

**Ibuprofen 800mg**  
**30 Tablets**  
**NDC: 12634-682-71**

LOT: EXP:

COMPARE TO: MOTRIN\*  
Rx Only  
Dispensed In A Tight, Light Resistant Container, As Defined In The USP, Using A Child Resistant Closure.

WHOLESALE PHARMACEUTICALS  
**APOTHECA, INC.**  
SPECIALISTS IN GENERIC PHARMACEUTICALS  
Manufacturers • Distributors • Private Label  
REV. DATE: 12/2015

**BULK SOURCE DATA**  
Manufactured By:  
Dr. Reddy's Laboratories  
Shreveport, LA 71106

**PRODUCT ID:**  
Debossed " 81 "  
Bulk NDC: 55111-684-05

Call your doctor for Medical Advice about Side Effects. You may Report Side Effects to FDA at: 1-800-FDA-1088

Obtain Medical Advice before taking non-prescription drugs, some may effect the action of this medication. Do not use if you are pregnant, plan to become pregnant or while breast feeding. Take With FOOD. May cause drowsiness. Alcohol may intensify this effect. Keep this and all Medication Out of the Reach of Children.

**Directions:**  
Take \_\_\_ tablet(s) by mouth \_\_\_ times a day, as directed by physician.  
Store at 20° to 25°C(68° to 77°F)[see USP Controlled Room Temperature]

Repackaged & Distributed by:  
Apotheca, Inc Phoenix, AZ 85006

## IBUPROFEN

ibuprofen tablet

### Product Information

<b>Product Type</b>	HUMAN PRESCRIPTION DRUG	<b>Item Code (Source)</b>	NDC:12634-171(NDC:55111-682)
<b>Route of Administration</b>	ORAL		

### Active Ingredient/Active Moiety

Ingredient Name	Basis of Strength	Strength
IBUPROFEN (UNII: WK2XYI10QM) (IBUPROFEN - UNII:WK2XYI10QM)	IBUPROFEN	400 mg

### Inactive Ingredients

Ingredient Name	Strength
CROSCARMELLOSE SODIUM (UNII: M28OL1HH48)	
HYPROMELLOSES (UNII: 3NXW29V3WO)	
MAGNESIUM STEARATE (UNII: 70097M6I30)	
CELLULOSE, MICROCRYSTALLINE (UNII: OP1R32D61U)	
POLYDEXTROSE (UNII: VH2XOU12IE)	
POLYETHYLENE GLYCOLS (UNII: 3WJQ0SDW1A)	
POLYSORBATE 80 (UNII: 6OZP39ZG8H)	
TITANIUM DIOXIDE (UNII: 15FIX9V2JP)	
CARNAUBA WAX (UNII: R12CBM0EIZ)	
SILICON DIOXIDE (UNII: ETJ7Z6XBU4)	

### Product Characteristics

<b>Color</b>	white	<b>Score</b>	no score
<b>Shape</b>	OVAL	<b>Size</b>	8mm
<b>Flavor</b>		<b>Imprint Code</b>	4I
<b>Contains</b>			

**Packaging**

#	Item Code	Package Description	Marketing Start Date	Marketing End Date
1	NDC:12634-171-00	10 in 1 BOTTLE; Type 0: Not a Combination Product	11/20/2008	
2	NDC:12634-171-01	100 in 1 BOTTLE; Type 0: Not a Combination Product	11/20/2008	
3	NDC:12634-171-09	35 in 1 BOTTLE; Type 0: Not a Combination Product	11/20/2008	
4	NDC:12634-171-40	40 in 1 BOTTLE; Type 0: Not a Combination Product	11/20/2008	
5	NDC:12634-171-42	42 in 1 BOTTLE; Type 0: Not a Combination Product	11/20/2008	
6	NDC:12634-171-50	50 in 1 BOTTLE; Type 0: Not a Combination Product	11/20/2008	
7	NDC:12634-171-52	12 in 1 BLISTER PACK; Type 0: Not a Combination Product	11/20/2008	
8	NDC:12634-171-54	14 in 1 BLISTER PACK; Type 0: Not a Combination Product	11/20/2008	
9	NDC:12634-171-57	20 in 1 BLISTER PACK; Type 0: Not a Combination Product	11/20/2008	
10	NDC:12634-171-59	30 in 1 BLISTER PACK; Type 0: Not a Combination Product	11/20/2008	
11	NDC:12634-171-60	60 in 1 BOTTLE; Type 0: Not a Combination Product	11/20/2008	
12	NDC:12634-171-61	10 in 1 BLISTER PACK; Type 0: Not a Combination Product	11/20/2008	
13	NDC:12634-171-63	3 in 1 BLISTER PACK; Type 0: Not a Combination Product	11/20/2008	
14	NDC:12634-171-66	6 in 1 BLISTER PACK; Type 0: Not a Combination Product	11/20/2008	
15	NDC:12634-171-67	7 in 1 BLISTER PACK; Type 0: Not a Combination Product	11/20/2008	
16	NDC:12634-171-69	9 in 1 BLISTER PACK; Type 0: Not a Combination Product	11/20/2008	
17	NDC:12634-171-71	30 in 1 BOTTLE; Type 0: Not a Combination Product	11/20/2008	
18	NDC:12634-171-74	24 in 1 BOTTLE; Type 0: Not a Combination Product	11/20/2008	
19	NDC:12634-171-78	28 in 1 BOTTLE; Type 0: Not a Combination Product	11/20/2008	
20	NDC:12634-171-79	25 in 1 BOTTLE; Type 0: Not a Combination Product	11/20/2008	
21	NDC:12634-171-80	20 in 1 BOTTLE; Type 0: Not a Combination Product	11/20/2008	
22	NDC:12634-171-81	21 in 1 BOTTLE; Type 0: Not a Combination Product	11/20/2008	
23	NDC:12634-171-82	12 in 1 BOTTLE; Type 0: Not a Combination Product	11/20/2008	
24	NDC:12634-171-85	15 in 1 BOTTLE; Type 0: Not a Combination Product	11/20/2008	
25	NDC:12634-171-91	1 in 1 BLISTER PACK; Type 0: Not a Combination Product	11/20/2008	
26	NDC:12634-171-94	4 in 1 BOTTLE; Type 0: Not a Combination Product	11/20/2008	
27	NDC:12634-171-95	5 in 1 BOTTLE; Type 0: Not a Combination Product	11/20/2008	
28	NDC:12634-171-96	6 in 1 BOTTLE; Type 0: Not a Combination Product	11/20/2008	

**Marketing Information**

Marketing Category	Application Number or Monograph Citation	Marketing Start Date	Marketing End Date
ANDA	ANDA075682	11/20/2008	

**IBUPROFEN**

ibuprofen tablet

**Product Information**

<b>Product Type</b>	HUMAN PRESCRIPTION DRUG	<b>Item Code (Source)</b>	NDC:12634-191(NDC:55111-683)
<b>Route of Administration</b>	ORAL		

**Active Ingredient/Active Moiety**

<b>Ingredient Name</b>	<b>Basis of Strength</b>	<b>Strength</b>
IBUPROFEN (UNII: WK2XYI10QM) (IBUPROFEN - UNII:WK2XYI10QM)	IBUPROFEN	600 mg

**Inactive Ingredients**

<b>Ingredient Name</b>	<b>Strength</b>
CARNAUBA WAX (UNII: R12CBM0EIZ)	
SILICON DIOXIDE (UNII: ETJ7Z6XBU4)	
CROSCARMELLOSE SODIUM (UNII: M28OL1HH48)	
HYPROMELLOSES (UNII: 3NXW29V3WO)	
MAGNESIUM STEARATE (UNII: 70097M6I30)	
CELLULOSE, MICROCRYSTALLINE (UNII: OP1R32D61U)	
POLYDEXTROSE (UNII: VH2XOU12IE)	
POLYETHYLENE GLYCOLS (UNII: 3WJQ0SDW1A)	
POLYSORBATE 80 (UNII: 6OZP39ZG8H)	
TITANIUM DIOXIDE (UNII: 15FIX9V2JP)	

**Product Characteristics**

<b>Color</b>	white	<b>Score</b>	no score
<b>Shape</b>	CAPSULE	<b>Size</b>	9mm
<b>Flavor</b>		<b>Imprint Code</b>	6I
<b>Contains</b>			

**Packaging**

#	Item Code	Package Description	Marketing Start Date	Marketing End Date
1	NDC:12634-191-00	10 in 1 BOTTLE; Type 0: Not a Combination Product	11/20/2008	
2	NDC:12634-191-01	100 in 1 BOTTLE; Type 0: Not a Combination Product	11/20/2008	
3	NDC:12634-191-09	35 in 1 BOTTLE; Type 0: Not a Combination Product	11/20/2008	
4	NDC:12634-191-40	40 in 1 BOTTLE; Type 0: Not a Combination Product	11/20/2008	
5	NDC:12634-191-42	42 in 1 BOTTLE; Type 0: Not a Combination Product	11/20/2008	
6	NDC:12634-191-50	50 in 1 BOTTLE; Type 0: Not a Combination Product	11/20/2008	
7	NDC:12634-191-52	12 in 1 BLISTER PACK; Type 0: Not a Combination Product	11/20/2008	
8	NDC:12634-191-54	14 in 1 BLISTER PACK; Type 0: Not a Combination Product	11/20/2008	
9	NDC:12634-191-57	20 in 1 BLISTER PACK; Type 0: Not a Combination Product	11/20/2008	
10	NDC:12634-191-59	30 in 1 BLISTER PACK; Type 0: Not a Combination Product	11/20/2008	

11	NDC:12634-191-60	60 in 1 BOTTLE; Type 0: Not a Combination Product	11/20/2008	
12	NDC:12634-191-61	10 in 1 BLISTER PACK; Type 0: Not a Combination Product	11/20/2008	
13	NDC:12634-191-63	3 in 1 BLISTER PACK; Type 0: Not a Combination Product	11/20/2008	
14	NDC:12634-191-66	6 in 1 BLISTER PACK; Type 0: Not a Combination Product	11/20/2008	
15	NDC:12634-191-67	7 in 1 BLISTER PACK; Type 0: Not a Combination Product	11/20/2008	
16	NDC:12634-191-69	9 in 1 BLISTER PACK; Type 0: Not a Combination Product	11/20/2008	
17	NDC:12634-191-71	30 in 1 BOTTLE; Type 0: Not a Combination Product	11/20/2008	
18	NDC:12634-191-74	24 in 1 BOTTLE; Type 0: Not a Combination Product	11/20/2008	
19	NDC:12634-191-78	28 in 1 BOTTLE; Type 0: Not a Combination Product	11/20/2008	
20	NDC:12634-191-79	25 in 1 BOTTLE; Type 0: Not a Combination Product	11/20/2008	
21	NDC:12634-191-80	20 in 1 BOTTLE; Type 0: Not a Combination Product	11/20/2008	
22	NDC:12634-191-81	21 in 1 BOTTLE; Type 0: Not a Combination Product	11/20/2008	
23	NDC:12634-191-82	12 in 1 BOTTLE; Type 0: Not a Combination Product	11/20/2008	
24	NDC:12634-191-85	15 in 1 BOTTLE; Type 0: Not a Combination Product	11/20/2008	
25	NDC:12634-191-91	1 in 1 BLISTER PACK; Type 0: Not a Combination Product	11/20/2008	
26	NDC:12634-191-94	4 in 1 BOTTLE; Type 0: Not a Combination Product	11/20/2008	
27	NDC:12634-191-95	5 in 1 BOTTLE; Type 0: Not a Combination Product	11/20/2008	
28	NDC:12634-191-96	6 in 1 BOTTLE; Type 0: Not a Combination Product	11/20/2008	

## Marketing Information

Marketing Category	Application Number or Monograph Citation	Marketing Start Date	Marketing End Date
ANDA	ANDA075682	11/20/2008	

## IBUPROFEN

ibuprofen tablet

### Product Information

<b>Product Type</b>	HUMAN PRESCRIPTION DRUG	<b>Item Code (Source)</b>	NDC:12634-682(NDC:55111-684)
<b>Route of Administration</b>	ORAL		

### Active Ingredient/Active Moiety

Ingredient Name	Basis of Strength	Strength
IBUPROFEN (UNII: WK2XYI10QM) (IBUPROFEN - UNII:WK2XYI10QM)	IBUPROFEN	800 mg

### Inactive Ingredients

Ingredient Name	Strength
CARNAUBA WAX (UNII: R12CBM0EIZ)	
SILICON DIOXIDE (UNII: ETJ7Z6XBU4)	
CROSCARMELOSE SODIUM (UNII: M28OL1HH48)	

**HYPROMELLOSES** (UNII: 3NXW29V3WO)

**MAGNESIUM STEARATE** (UNII: 70097M6I3O)

**CELLULOSE, MICROCRYSTALLINE** (UNII: OP1R32D61U)

**POLYDEXTROSE** (UNII: VH2XOU12IE)

**POLYETHYLENE GLYCOLS** (UNII: 3WJQ0SDW1A)

**POLYSORBATE 80** (UNII: 6OZP39ZG8H)

**TITANIUM DIOXIDE** (UNII: 15FIX9V2JP)

### Product Characteristics

<b>Color</b>	white	<b>Score</b>	no score
<b>Shape</b>	CAPSULE	<b>Size</b>	9mm
<b>Flavor</b>		<b>Imprint Code</b>	8I
<b>Contains</b>			

### Packaging

#	Item Code	Package Description	Marketing Start Date	Marketing End Date
1	NDC:12634-682-00	10 in 1 BOTTLE; Type 0: Not a Combination Product	11/20/2008	
2	NDC:12634-682-01	100 in 1 BOTTLE; Type 0: Not a Combination Product	11/20/2008	
3	NDC:12634-682-09	35 in 1 BOTTLE; Type 0: Not a Combination Product	11/20/2008	
4	NDC:12634-682-40	40 in 1 BOTTLE; Type 0: Not a Combination Product	11/20/2008	
5	NDC:12634-682-42	42 in 1 BOTTLE; Type 0: Not a Combination Product	11/20/2008	
6	NDC:12634-682-50	50 in 1 BOTTLE; Type 0: Not a Combination Product	11/20/2008	
7	NDC:12634-682-52	12 in 1 BLISTER PACK; Type 0: Not a Combination Product	11/20/2008	
8	NDC:12634-682-54	14 in 1 BLISTER PACK; Type 0: Not a Combination Product	11/20/2008	
9	NDC:12634-682-57	20 in 1 BLISTER PACK; Type 0: Not a Combination Product	11/20/2008	
10	NDC:12634-682-59	30 in 1 BLISTER PACK; Type 0: Not a Combination Product	11/20/2008	
11	NDC:12634-682-60	60 in 1 BOTTLE; Type 0: Not a Combination Product	11/20/2008	
12	NDC:12634-682-61	10 in 1 BLISTER PACK; Type 0: Not a Combination Product	11/20/2008	
13	NDC:12634-682-63	3 in 1 BLISTER PACK; Type 0: Not a Combination Product	11/20/2008	
14	NDC:12634-682-66	6 in 1 BLISTER PACK; Type 0: Not a Combination Product	11/20/2008	
15	NDC:12634-682-67	7 in 1 BLISTER PACK; Type 0: Not a Combination Product	11/20/2008	
16	NDC:12634-682-69	9 in 1 BLISTER PACK; Type 0: Not a Combination Product	11/20/2008	
17	NDC:12634-682-71	30 in 1 BOTTLE; Type 0: Not a Combination Product	11/20/2008	
18	NDC:12634-682-74	24 in 1 BOTTLE; Type 0: Not a Combination Product	11/20/2008	
19	NDC:12634-682-78	28 in 1 BOTTLE; Type 0: Not a Combination Product	11/20/2008	
20	NDC:12634-682-79	25 in 1 BOTTLE; Type 0: Not a Combination Product	11/20/2008	

21	NDC:12634-682-80	20 in 1 BOTTLE; Type 0: Not a Combination Product	11/20/2008	
22	NDC:12634-682-81	21 in 1 BOTTLE; Type 0: Not a Combination Product	11/20/2008	
23	NDC:12634-682-82	12 in 1 BOTTLE; Type 0: Not a Combination Product	11/20/2008	
24	NDC:12634-682-85	15 in 1 BOTTLE; Type 0: Not a Combination Product	11/20/2008	
25	NDC:12634-682-91	1 in 1 BLISTER PACK; Type 0: Not a Combination Product	11/20/2008	
26	NDC:12634-682-94	4 in 1 BOTTLE; Type 0: Not a Combination Product	11/20/2008	
27	NDC:12634-682-95	5 in 1 BOTTLE; Type 0: Not a Combination Product	11/20/2008	
28	NDC:12634-682-96	6 in 1 BOTTLE; Type 0: Not a Combination Product	11/20/2008	

## Marketing Information

Marketing Category	Application Number or Monograph Citation	Marketing Start Date	Marketing End Date
ANDA	ANDA075682	11/20/2008	

**Labeler** - Apotheca Inc. (051457844)

## Establishment

Name	Address	ID/FEI	Business Operations
Apotheca Inc.		051457844	relabel(12634-171, 12634-191, 12634-682) , repack(12634-171, 12634-191, 12634-682)

Revised: 7/2016

Apotheca Inc.