

INMAZEB- atoltivimab, maftivimab, and odesivimab-ebgn injection, solution

Regeneron Pharmaceuticals, Inc.

HIGHLIGHTS OF PRESCRIBING INFORMATION

These highlights do not include all the information needed to use INMAZEB safely and effectively. See full prescribing information for INMAZEB.

INMAZEB® (atoltivimab, maftivimab, and odesivimab-ebgn) injection, for intravenous use
Initial U.S. Approval: 2020

INDICATIONS AND USAGE

INMAZEB is a combination of *Orthoebolavirus zairense* glycoprotein-directed human monoclonal antibodies (atoltivimab, maftivimab, and odesivimab), indicated for the treatment of infection caused by *Orthoebolavirus zairense* in adult and pediatric patients, including neonates born to a mother who is RT-PCR positive for *Orthoebolavirus zairense* infection. (1)

Limitation of Use

- The efficacy of INMAZEB has not been established for other species of the *Orthoebolavirus* and *Orthomarburgvirus* genera.
- *Orthoebolavirus zairense* can change over time, and factors such as emergence of resistance, or changes in viral virulence could diminish the clinical benefit of antiviral drugs. Consider available information on drug susceptibility patterns for circulating *Orthoebolavirus zairense* strains when deciding whether to use INMAZEB.

DOSAGE AND ADMINISTRATION

The recommended dosage of INMAZEB is 50 mg of atoltivimab, 50 mg of maftivimab, and 50 mg of odesivimab per kg diluted and administered as a single intravenous infusion. (2.1)

Refer to the Full Prescribing Information for information on preparation and administration. (2.2)

DOSAGE FORMS AND STRENGTHS

Injection:

- 241.7 mg of atoltivimab, 241.7 mg of maftivimab, and 241.7 mg of odesivimab per 14.5 mL (16.67 mg/16.67 mg/16.67 mg per mL) in a single-dose vial. (3)
- 483.3 mg of atoltivimab, 483.3 mg of maftivimab, and 483.3 mg of odesivimab per 14.5 mL (33.33 mg/33.33 mg/33.33 mg per mL) in a single-dose vial. (3)

CONTRAINDICATIONS

None. (4)

WARNINGS AND PRECAUTIONS

Hypersensitivity Reactions Including Infusion-Associated Events: Hypersensitivity reactions including infusion-associated events have been reported during and post-infusion with INMAZEB. These may include acute, life-threatening reactions during and after the infusion. Monitor patients and in the case of severe or life-threatening hypersensitivity reactions, discontinue the administration of INMAZEB immediately and administer appropriate emergency care. (5.1)

ADVERSE REACTIONS

The most common adverse events (incidence $\geq 20\%$) were pyrexia, chills, tachycardia, tachypnea, and vomiting. (6.1)

To report SUSPECTED ADVERSE REACTIONS, contact Regeneron at 1-844-734-6643 or www.regeneron.com/contact or FDA AT 1-800-FDA-1088 or www.fda.gov/medwatch.

DRUG INTERACTIONS

Interaction with live vaccine indicated for prevention of *Orthoebolavirus zairense* infection: No vaccine interaction studies have been performed. INMAZEB may reduce the efficacy of the live vaccine. The interval between live vaccination following initiation of INMAZEB therapy should be in accordance with current vaccination guidelines. (7.1)

USE IN SPECIFIC POPULATIONS

Lactation: Patients infected with *Orthoebolavirus zairense* should be instructed not to breastfeed due to the potential for *Orthoebolavirus zairense* transmission. (8.2)

See 17 for PATIENT COUNSELING INFORMATION.

Revised: 12/2024

FULL PRESCRIBING INFORMATION: CONTENTS*

1 INDICATIONS AND USAGE

2 DOSAGE AND ADMINISTRATION

2.1 Recommended Dosage

2.2 Preparation and Administration

3 DOSAGE FORMS AND STRENGTHS

4 CONTRAINDICATIONS

5 WARNINGS AND PRECAUTIONS

5.1 Hypersensitivity Reactions Including Infusion-Associated Events

6 ADVERSE REACTIONS

6.1 Clinical Trials Experience

6.2 Immunogenicity

7 DRUG INTERACTIONS

7.1 Vaccine Interactions

8 USE IN SPECIFIC POPULATIONS

8.1 Pregnancy

8.2 Lactation

8.4 Pediatric Use

8.5 Geriatric Use

11 DESCRIPTION

12 CLINICAL PHARMACOLOGY

12.1 Mechanism of Action

12.2 Pharmacodynamics

12.3 Pharmacokinetics

12.4 Microbiology

13 NONCLINICAL TOXICOLOGY

13.1 Carcinogenesis, Mutagenesis, Impairment of Fertility

14 CLINICAL STUDIES

16 HOW SUPPLIED/STORAGE AND HANDLING

17 PATIENT COUNSELING INFORMATION

* Sections or subsections omitted from the full prescribing information are not listed.

FULL PRESCRIBING INFORMATION

1 INDICATIONS AND USAGE

INMAZEB is indicated for the treatment of infection caused by *Orthoebolavirus zaire* in adult and pediatric patients, including neonates born to a mother who is RT-PCR positive for *Orthoebolavirus zaire* infection [see *Dosage and Administration* (2.2), and *Clinical Studies* (14)].

Limitations of Use

The efficacy of INMAZEB has not been established for other species of the *Orthoebolavirus* and *Orthomarburgvirus* genera.

Orthoebolavirus zairense can change over time, and factors such as emergence of resistance, or changes in viral virulence could diminish the clinical benefit of antiviral drugs. Consider available information on drug susceptibility patterns for circulating *Orthoebolavirus zairense* strains when deciding whether to use INMAZEB.

2 DOSAGE AND ADMINISTRATION

2.1 Recommended Dosage

INMAZEB is a combination of three human monoclonal antibodies co-formulated in a 1:1:1 ratio of atoltivimab, maftivimab, and odesivimab. INMAZEB is available as two different strength presentations, containing either 16.67 mg of each antibody per mL or 33.33 mg of each antibody per mL [see *Dosage Forms and Strengths* (3)].

The recommended dosage of INMAZEB is 50 mg of atoltivimab, 50 mg of maftivimab, and 50 mg of odesivimab per kg diluted and administered as a single intravenous infusion as shown in [Table 1](#) [see *Dosage and Administration* (2.2)].

2.2 Preparation and Administration

INMAZEB must be prepared and administered under the supervision of a healthcare provider. Parenteral drug products should be inspected visually for particulate matter and discoloration prior to administration, whenever solution and container permit. INMAZEB should be clear to slightly opalescent, colorless to pale yellow solution that is free from visible particulates. Discard the vial if the solution is cloudy, discolored or contains particulate matter.

Preparation for Intravenous Infusion

- The recommended dosage is based on 50 mg of atoltivimab, 50 mg of maftivimab, and 50 mg of odesivimab per kg. For example, a patient weighing 50 kg the recommended dosage is 2,500 mg of atoltivimab, 2,500 mg of maftivimab, and 2,500 mg of odesivimab.
- Determine the number of vials needed based on the calculated dose in volume (mL).
 - The number of vials needed depends on the INMAZEB strength used. Refer to [Table 1](#) for the corresponding volume per kg needed to withdraw from each available strength presentation to prepare dose.
 - Multiple INMAZEB vials may be needed. Each vial contains 14.5 mL of INMAZEB solution, regardless of the strength presentation. For example, for a 50 kg patient, the volume of INMAZEB needed is 150 mL (11 vials) if using the 16.67 mg/16.67 mg/16.67 mg per mL solution or 75 mL (6 vials) if using the 33.33 mg/33.33 mg/33.33 mg per mL solution.

Table 1: INMAZEB Dosage (Volume per kg) for Intravenous Infusion Preparation

When Using the	When Using the
241.7 mg of atoltivimab, 241.7	483.3 mg of atoltivimab, 483.3

mg of maftivimab, and 241.7 mg of odesivimab per 14.5 mL (16.67 mg /16.67 mg /16.67 mg per mL) Solution	mg of maftivimab, and 483.3 mg of odesivimab per 14.5 mL (33.33 mg/33.33 mg /33.33 mg per mL) Solution
Withdraw 3 mL of solution per kg to prepare the dose	Withdraw 1.5 mL of solution per kg to prepare the dose

- Do not shake the vial.
- Prior to intravenous infusion, INMAZEB must be further diluted in an intravenous PVC infusion bag containing either 0.9% Sodium Chloride Injection, USP, 5% Dextrose Injection, USP, or Lactated Ringer's Injection, USP. For neonates, the INMAZEB solution should be diluted in 5% Dextrose Injection, USP (see Table 2). **The total volume of the infusion solution to be administered is based on the patient's body weight and is specified in Table 2.**
- Select a diluent solution infusion bag of appropriate fill volume based on the patient's body weight (see Table 2). Withdraw and discard from the bag a volume of diluent solution equal to the calculated dose in volume (mL) of INMAZEB. Then add the calculated volume of INMAZEB to the bag. For example:
 - When using the 16.67 mg/16.67 mg/16.67 mg per mL solution for a 50 kg patient, withdraw and discard 150 mL of diluent from a 500 mL infusion bag. Then add 150 mL of INMAZEB to obtain a total infusion volume of 500 mL.
 - When using the 33.33 mg/33.33 mg/33.33 mg per mL solution for a 50 kg patient, withdraw and discard 75 mL of diluent from a 500 mL infusion bag. Then add 75 mL of INMAZEB to obtain a total infusion volume of 500 mL.

Table 2: INMAZEB Infusion Volumes and Times by Body Weight

Body Weight (kg)	Total Infusion Volume After Dilution (mL)*	Infusion Time
0.5 to less than 1	7	4 hours
1 to 1.9	15	
2 to 3.9	25	
4 to 7	50	3 hours
8 to 15	100	
16 to 38	250	
39 to 79	500	2 hours
80 to 149	1,000	
150 and above	2,000	
		4 hours

* The recommended infusion volume ensures the final concentration of the diluted solution is 9.5 mg/mL to 23.7 mg/mL for the 16.67 mg/16.67 mg/16.67 mg per mL solution and 9.5 mg/mL to 30 mg/mL for the 33.33 mg/33.33 mg/33.33 mg per mL solution. 5% Dextrose Injection, USP is recommended for neonates.

- Mix the diluted solution by gentle inversion. Do not shake.
- INMAZEB does not contain preservatives. It is always recommended to administer intravenous medication immediately after preparation when possible. Store the diluted

INMAZEB solution as specified in [Table 3](#).

- Do not freeze the diluted solution.
- Discard any unused medicinal product or waste material.

Table 3: Diluted INMAZEB Solution Storage Conditions

Diluent Used to Prepare Solution for Infusion	Diluted INMAZEB Solution Storage Conditions
0.9% Sodium Chloride Injection, USP	Store at room temperature up to 25°C (77°F) for no more than 8 hours or refrigerated at 2°C to 8°C (36°F to 46°F) for no more than 24 hours.
5% Dextrose Injection, USP	Store at room temperature up to 25°C (77°F) for no more than 4 hours or refrigerated at 2°C to 8°C (36°F to 46°F) for no more than 24 hours.
Lactated Ringer's Injection, USP	Store at room temperature up to 25°C (77°F) for no more than 4 hours or refrigerated at 2°C to 8°C (36°F to 46°F) for no more than 4 hours.

Administration

- INMAZEB must be administered by a healthcare provider.
- Allow the diluted infusion solution to come to room temperature prior to administration.
 - INMAZEB diluted with 5% Dextrose Injection, USP can be infused at temperatures up to 35°C (95°F). When the temperature is higher than 25°C (77°F), administer the diluted INMAZEB with 5% Dextrose Injection, USP immediately after completion of dose preparation.
- Administer the diluted infusion solution intravenously through an intravenous line containing a sterile, in-line or add-on 0.2-micron filter.
- The infusion rate is based on the patient's body weight and prepared infusion volume. Select an appropriate infusion rate for the diluted infusion solution (see Table 2). It is important to follow the infusion time outlined in [Table 2](#) based on the patient's weight.
- The rate of infusion of INMAZEB may be slowed or interrupted if the patient develops any signs of infusion-associated events or other adverse events [*see Warnings and Precautions (5.1)*].
- Do not mix other medications with INMAZEB.
- Compatibility studies of INMAZEB have not been performed when co-administering other drugs simultaneously through the same infusion line.

3 DOSAGE FORMS AND STRENGTHS

INMAZEB is a clear to slightly opalescent and colorless to pale yellow solution available as:

- Injection: 241.7 mg of atoltivimab, 241.7 mg of maftivimab, and 241.7 mg of odesivimab per 14.5 mL (16.67 mg/16.67 mg/16.67 mg per mL) in a single-dose vial.
- Injection: 483.3 mg of atoltivimab, 483.3 mg of maftivimab, and 483.3 mg of odesivimab per 14.5 mL (33.33 mg/33.33 mg/33.33 mg per mL) in a single-dose vial.

4 CONTRAINDICATIONS

None.

5 WARNINGS AND PRECAUTIONS

5.1 Hypersensitivity Reactions Including Infusion-Associated Events

Hypersensitivity reactions including infusion-associated events have been reported during and post-infusion with INMAZEB. These may include acute, life-threatening reactions during and after the infusion. Monitor all patients for signs and symptoms including, but not limited to, hypotension, chills and elevation of fever, during and following INMAZEB infusion. In the case of severe or life-threatening hypersensitivity reactions, discontinue the administration of INMAZEB immediately and administer appropriate emergency care [see *Adverse Reactions (6.1)*].

Infusion could not be completed in 1% of subjects who received INMAZEB due to infusion-associated adverse events. The rate of infusion of INMAZEB may be slowed or interrupted if the patient develops any signs of infusion-associated events or other adverse events [see *Adverse Reactions (6.1)*].

6 ADVERSE REACTIONS

The following clinically significant adverse reactions are described elsewhere in the labeling:

- Hypersensitivity Reactions Including Infusion-Associated Events [see *Warnings and Precautions (5.1)*]

6.1 Clinical Trials Experience

Because clinical trials are conducted under widely varying conditions, adverse reaction rates may not reflect the rates observed in practice.

Overall, 382 adult and pediatric subjects with *Orthoebolavirus zairense* infection received INMAZEB in one clinical trial (the PALM trial) and as part of an expanded access program conducted in the Democratic Republic of Congo during a *Orthoebolavirus zairense* outbreak in 2018-2019. In the PALM trial, the safety of INMAZEB was evaluated in a multi-center, open-label, randomized controlled trial, in which 154 subjects (115 adult subjects and 39 pediatric subjects) received INMAZEB [50 mg of atoltivimab, 50 mg of maftivimab, and 50 mg of odesivimab per kg (3 mL/kg)] intravenously as a single infusion and 168 subjects received an investigational control [see *Clinical Studies (14)*]. All subjects received optimized standard of care treatment. During the same outbreak, INMAZEB [50 mg of atoltivimab, 50 mg of maftivimab, and 50 mg of odesivimab per kg (3 mL/kg)] was given to 228 subjects (190 adult subjects and 38 pediatric subjects) in the expanded access program.

The safety data described below is derived from the PALM trial.

Table 4 summarizes adverse events that were reported during INMAZEB infusion. The evaluation of adverse events in subjects who received INMAZEB may have been confounded by the signs and symptoms of the underlying *Orthoebolavirus zairense* infection. The most common adverse events reported in at least 20% of subjects who received INMAZEB were pyrexia (or elevation in fever), chills, tachycardia, tachypnea, and vomiting. The adverse event profile in adult and pediatric subjects treated with INMAZEB was similar.

Table 4: Adverse Events That Occurred during INMAZEB Infusion in $\geq 10\%$ of Adult and Pediatric Subjects in the PALM Trial

Adverse Event*	INMAZEB (N=154) %	Control† (N=168) %
Pyrexia (Elevation in fever)	54	58
Chills	39	33
Tachycardia	20	32
Tachypnea	19	28
Vomiting‡	19	23
Hypotension	15	31
Diarrhea‡	11	18
Hypoxia‡	10	11

* Adverse events in this table were reported as preferred terms from a list of pre-defined or other adverse events that occurred on the day of infusion, and included signs and symptoms that occurred during or immediately after infusion

† Investigational therapy administered as three separate infusions

‡ Adverse events that were not pre-specified

The following pre-specified symptoms, which were assessed on a daily basis while admitted to the treatment unit, were reported in 40% or more of subjects who received INMAZEB: diarrhea, pyrexia, and vomiting. Evaluation of these symptoms may have been confounded by the underlying *Orthoebolavirus zairense* infection.

Discontinuation and Infusion Rate Adjustments in the PALM Trial

Approximately 99% of subjects who received INMAZEB in the PALM trial were able to complete their dose within three hours. Two subjects who received INMAZEB (1%) did not receive their complete infusion. One of the two subjects did not complete their INMAZEB infusion because of fever elevation [see *Warnings and Precautions (5.1)*].

Selected Laboratory Abnormalities in the PALM Trial

Table 5 presents selected laboratory abnormalities (worsening to Grade 3 or 4 compared to baseline) for adult and pediatric subjects in the PALM trial.

Table 5: Selected Grade 3 and 4 Laboratory Abnormalities, Worsened Grade from Baseline for Adult

and Pediatric Subjects in the PALM Trial

Laboratory Test*	INMAZEB N=154 %	Control N=168 %
Sodium, high ≥ 154 mmol/L	9	4
Sodium, low < 125 mmol/L	7	11
Potassium, high ≥ 6.5 mmol/L	13	12
Potassium, low < 2.5 mmol/L	9	8
Creatinine (mg/dL) $\geq 1.8 \times \text{ULN}^\dagger$	15	23
Alanine aminotransferase (U/L) $\geq 5 \times \text{ULN}$	10	14
Aspartate aminotransferase (U/L) $\geq 5 \times \text{ULN}$	21	18

ULN = upper limit of normal

* Graded per Division of AIDS (DAIDS) v2.1

† ULN for creatinine was 1.2 mg/dL. Criterion for increase to $\geq 1.5 \times$ from baseline was applied if the worsening grade was higher.

6.2 Immunogenicity

As with all therapeutic proteins, there is potential for immunogenicity. The detection of antibody formation is highly dependent on the sensitivity and specificity of the assay. Additionally, the observed incidence of antibody (including neutralizing antibody) positivity in an assay may be influenced by several factors including assay methodology, sample handling, timing of sample collection, concomitant medications, and underlying disease. For these reasons, comparison of the incidence of antibodies in the study described below with the incidence of antibodies in other studies or to other atoltivimab, maftivimab, and odesivimab products may be misleading.

The development of anti-atoltivimab, anti-maftivimab, and anti-odesivimab antibodies was evaluated in 24 healthy adults in a single dose, randomized, double-blind, placebo-controlled, dose escalation study. Immunogenic responses against atoltivimab, maftivimab, and odesivimab were not detected at baseline or through 168 days post-dose in any subjects.

7 DRUG INTERACTIONS

7.1 Vaccine Interactions

No vaccine-therapeutic interaction studies have been performed in human subjects using INMAZEB. However, because of the potential for INMAZEB to inhibit replication of a live vaccine virus indicated for prevention of *Orthoebolavirus zairense* infection and

possibly reduce the efficacy of the vaccine, avoid the concurrent administration of a live vaccine during treatment with INMAZEB. The interval between live vaccination following initiation of INMAZEB therapy should be in accordance with current vaccination guidelines. The efficacy of INMAZEB among subjects who reported receipt of a recombinant live vaccine prior to their enrollment in the PALM clinical trial was similar to subjects who did not receive a vaccine.

8 USE IN SPECIFIC POPULATIONS

8.1 Pregnancy

Risk Summary

Orthoebolavirus zairense infection is life-threatening for both the mother and fetus and treatment should not be withheld due to pregnancy (see *Clinical Considerations*). Available data from the PALM trial and an expanded access program in which pregnant women with *Orthoebolavirus zairense* infection were treated with INMAZEB demonstrate the high rate of maternal and fetal/neonatal morbidity consistent with published literature regarding the risk associated with underlying maternal *Orthoebolavirus zairense* infection. These data are insufficient to evaluate for a drug-associated risk of major birth defects, miscarriage, or adverse maternal/fetal outcome. Animal reproduction studies with INMAZEB have not been conducted. Human monoclonal antibodies, such as INMAZEB, are transported across the placenta; therefore, INMAZEB has the potential to be transferred from the mother to the developing fetus.

Clinical Considerations

Disease-associated maternal and/or embryo/fetal risk

Maternal, fetal and neonatal outcomes are poor among pregnant women infected with *Orthoebolavirus zairense*. The majority of such pregnancies result in maternal death with miscarriage, stillbirth, or neonatal death. Treatment should not be withheld due to pregnancy.

8.2 Lactation

Risk Summary

The Centers for Disease Control and Prevention recommend that patients with confirmed *Orthoebolavirus zairense* not breastfeed their infants to reduce the risk of postnatal transmission of *Orthoebolavirus zairense* infection.

There are no data on the presence of atoltivimab, maftivimab, and odesivimab-ebgn in human or animal milk, the effects on the breastfed infant, or the effects on milk production. Maternal IgG is known to be present in human milk. The effects of local gastrointestinal exposure and limited systemic exposure in the breastfed infant to atoltivimab, maftivimab, or odesivimab-ebgn are unknown.

8.4 Pediatric Use

The safety and effectiveness of INMAZEB for the treatment of infection caused by *Orthoebolavirus zairense* have been established in pediatric patients from birth to less than 18 years of age. Use of INMAZEB for this indication is supported by evidence from

a multi-center, open label, randomized controlled trial of INMAZEB in adults and pediatric subjects that included 39 pediatric subjects birth to less than 18 years of age, including neonates born to a mother who is RT-PCR positive for *Orthoebolavirus zairense* infection. The 28-day mortality and safety in adult and pediatric subjects treated with INMAZEB were similar [see *Adverse Reactions (6.1)* and *Clinical Studies (14)*]. An additional 38 pediatric subjects from birth to less than 18 years of age received INMAZEB in an expanded access program.

8.5 Geriatric Use

Clinical studies of INMAZEB did not include sufficient numbers of subjects aged 65 and over to determine whether they respond differently from younger subjects. Of the 154 subjects with *Orthoebolavirus zairense* infection who received INMAZEB in the randomized controlled trial, 5 (3.2%) were 65 years or older. The limited clinical experience has not identified differences in responses between the elderly and younger subjects.

11 DESCRIPTION

Atoltivimab, maftivimab, and odesivimab-ebgn is a combination of *Orthoebolavirus zairense* glycoprotein (GP) directed recombinant human IgG1 human monoclonal antibodies of similar structure. The human monoclonal antibodies, atoltivimab, maftivimab, and odesivimab are produced by recombinant DNA technology in Chinese hamster ovary (CHO) cell suspension culture and have an approximate molecular weight of 145 kDa, 146 kDa and 144 kDa, respectively.

INMAZEB (atoltivimab, maftivimab, and odesivimab-ebgn) injection for intravenous use is a sterile, preservative-free, clear to slightly opalescent, colorless to pale yellow solution, that is free from visible particulates.

INMAZEB injection is supplied as two strength presentations:

- 16.67 mg/16.67 mg/16.67 mg per mL: Each vial contains 241.7 mg of atoltivimab, 241.7 mg of maftivimab, and 241.7 mg of odesivimab in 14.5 mL. Each mL contains 16.67 mg of atoltivimab, 16.67 mg of maftivimab, 16.67 mg of odesivimab, and L-histidine (0.74 mg), L-histidine monohydrochloride monohydrate (1.09 mg), polysorbate 80 (1 mg), sucrose (100 mg), and Water for Injection, USP with a pH of 6.0.
- 33.33 mg/33.33 mg/33.33 mg per mL: Each vial contains 483.3 mg of atoltivimab, 483.3 mg of maftivimab, and 483.3 mg of odesivimab in 14.5 mL. Each mL contains 33.33 mg of atoltivimab, 33.33 mg of maftivimab, 33.33 mg of odesivimab, and L-histidine (0.74 mg), L-histidine monohydrochloride monohydrate (1.09 mg), polysorbate 80 (1 mg), sucrose (100 mg), and Water for Injection, USP with a pH of 6.0.

12 CLINICAL PHARMACOLOGY

12.1 Mechanism of Action

INMAZEB is an antiviral drug combination of three recombinant human IgG1k monoclonal antibodies (atoltivimab, maftivimab, and odesivimab) that inhibit *Orthoebolavirus zairense* [see *Microbiology (12.4)*].

12.2 Pharmacodynamics

Atoltivimab, maftivimab, and odesivimab exposure-response relationships and the time course of pharmacodynamic response are unknown.

12.3 Pharmacokinetics

No pharmacokinetic data are available in patients with *Orthoebolavirus zairense* infection. The pharmacokinetics of atoltivimab, maftivimab, and odesivimab in 18 healthy subjects 21 to 60 years of age are linear and dose-proportional over the range of 1 mg of atoltivimab, 1 mg of maftivimab, and 1 mg of odesivimab per kg to 50 mg of atoltivimab, 50 mg of maftivimab, and 50 mg of odesivimab per kg (0.02 to 1 times the approved recommended dosage) of INMAZEB following a single intravenous (IV) infusion. Pharmacokinetic parameters for the individual antibodies of INMAZEB are provided in [Table 6](#).

Table 6: Pharmacokinetic Parameters of INMAZEB Administered IV in Healthy Subjects

	Atoltivimab 50 mg/kg*	Maftivimab 50 mg/kg*	Odesivimab 50 mg/kg*
Systemic Exposure (n=6)			
Mean (SD) C _{max} , mg/L	1,220 (101)	1,280 (68.0)	1,260 (81.2)
Mean (SD) AUC _{inf} , mg day/L	17,100 (4,480)	18,700 (4,100)	25,600 (5,040)
Distribution			
Mean (SD) Volume of Distribution at Steady State, mL/kg	58.2 (2.66)	57.6 (3.89)	56.0 (3.16)
Elimination			
Mean (SD) Elimination Half-Life (days)	21.2 (3.36)	22.3 (3.09)	25.3 (3.86)
Mean (SD) Clearance (mL/day/kg)	3.08 (0.719)	2.78 (0.558)	2.02 (0.374)

* INMAZEB was administered at a total dose of 50 mg of atoltivimab, 50 mg of maftivimab, and 50 mg of odesivimab per kg in a 1:1:1 ratio.

Specific Populations

The effect of age (< 21 or > 60), renal impairment, or hepatic impairment on the pharmacokinetics of atoltivimab, maftivimab, and odesivimab is unknown.

12.4 Microbiology

Mechanism of Action

INMAZEB is a combination of three recombinant human IgG1k monoclonal antibodies each targeting the *Orthoebolavirus zaire* glycoprotein (EBOV GP). *Orthoebolavirus zaire* (EBOV) encodes a sole envelope protein, the glycoprotein, which mediates virus attachment and membrane fusion with the host cell membranes. In addition, GP is expressed on the surface of *Orthoebolavirus zaire* infected host cells making it a target for antibodies that can mediate killing of these cells by antibody dependent cellular cytotoxicity and/or other effector functions. The 3 antibodies that make up the combination bind to 3 non-overlapping epitopes on GP and all 3 antibodies can bind the GP simultaneously. The mean K_D values for atoltivimab, maftivimab, and odesivimab were 7.84 nM, 3.34 nM, and 8.26 nM, respectively, as determined by surface plasmon resonance. Maftivimab is a neutralizing antibody that blocks entry of the virus into susceptible cells. Odesivimab is a non-neutralizing antibody that induces antibody-dependent effector function through FcγRIIIa signaling when bound to its target. Odesivimab also binds to the soluble form of *Orthoebolavirus zaire* glycoprotein (sGP). Atoltivimab combines both neutralization and FcγRIIIa signaling activities.

Antiviral Activity

In a live virus infection assay on Vero cells, maftivimab neutralized Mayinga, Kikwit, and Makona strains of *Orthoebolavirus zaire*, with a concentration between 0.2 and 1.2 nM (0.03 and 0.18 μg/mL) providing 80% inhibition of viral infection in a plaque-reduction neutralization test (PRNT-80). Atoltivimab and odesivimab did not demonstrate any neutralizing activity in this assay. Effector function activity of INMAZEB individual antibodies was assessed with an EBOV Makona-GP expressing cell line and Jurkat/NFAT-Luc/FcγRIIIa reporter effector cells. The EC_{50} values of atoltivimab and odesivimab were 2.9 nM and 1.6 nM, respectively, whereas maftivimab did not exhibit any FcγRIIIa signaling activity at the maximum concentration tested, 40 nM.

Treatment of *Orthoebolavirus zaire* infected rhesus macaques with a single intravenous dose of INMAZEB (50 mg of atoltivimab, 50 mg of maftivimab, and 50 mg of odesivimab per kg) generally protected infected animals from *Orthoebolavirus zaire* mediated death when drug was administered 5 days post-infection.

Resistance

No clinical data are available on the development of EBOV resistance to INMAZEB. Previously identified substitutions in EBOV were assessed for activity in binding, neutralization and ADCC. Results of these assays are presented in [Table 7](#), [Table 8](#), and [Table 9](#). The clinical significance of these substitutions is unknown.

Binding Activity

Binding was assessed with an electrochemiluminescence (ECL)-based assay using virus like particles (VLPs) pseudotyped with EBOV Makona 2014 reference GP or variant EBOV GP. The results of this assay are shown in [Table 7](#).

Table 7: Summary of Reduced Binding of Atoltivimab, Odesivimab, Maftivimab and INMAZEB to VLPs Pseudotyped with EBOV GP Variants Compared to EBOV Makona 2014 GP Reference

<i>Orthoebolavirus</i>	Reduced Binding	Reduced Binding	Reduced Binding	Reduced Binding
------------------------	-----------------	-----------------	-----------------	-----------------

zairenses Variant	Activity of Atoltivimab Alone	Activity of Odesivimab Alone	Activity of Maftivimab Alone	Activity of INMAZEB
P34S	NC*	NC*	NC*	NC*
N40D	NC*	NC*	NC*	NC*
T144M	NC*	≥9-fold [†]	NC*	NC*
P209T	NC*	NC*	NC*	NC*
Q221K	NC*	NC*	NC*	NC*
G224D	NC*	≥9-fold [†]	NC*	NC*
L239S	NC*	NC*	NC*	NC*
K265M	NC*	NC*	NC*	NC*
G271E	NC*	NC*	NC*	NC*
L273P	NC*	NC*	NC*	NC*
I274M	NC*	NC*	NC*	NC*
W275L	NC*	NC*	NC*	NC*
E280G	>186-fold [†]	NC*	NC*	NC*
E304A	NC*	NC*	NC*	NC*
S347F	NC*	NC*	NC*	NC*
R501G	NC*	NC*	NC*	NC*
A507S	NC*	NC*	NC*	NC*
A507T	NC*	NC*	NC*	NC*
I527T	NC*	NC*	NC*	NC*
G528R	NC*	NC*	≥454-fold	NC*
F535L	NC*	NC*	NC*	NC*
T544I	NC*	NC*	NC*	NC*
H549R	NC*	NC*	NC*	NC*
N563T	NC*	NC*	>454-fold [†]	NC*
E564A	NC*	NC*	NC*	NC*
E564K	NC*	NC*	>454-fold [†]	NC*
K588N	NC*	NC*	NC*	NC*

* NC, no change: <5.1-fold reduction in binding activity compared to EBOV Makona 2014 reference GP. A <5.1-fold change in EC₅₀ value is within the inherent variability of this assay. However, the <5.1 fold-change threshold cannot rule out the possibility that substitutions that lead to fold-changes below this threshold have a meaningful impact on binding. The clinical significance of a ≥ 5.1-fold reduction in binding activity is unknown

† Where an EC₅₀ value could not be accurately calculated, the change in mAb potency in the presence of each mutant was calculated by dividing the maximum antibody concentration tested (333nM) by the EC₅₀ value calculated for atoltivimab, odesivimab, maftivimab, and INMAZEB in the presence of reference VLP

Neutralization Activity

Neutralization by atoltivimab, maftivimab, and INMAZEB was assessed using VLPs pseudotyped with EBOV Makona 2014 reference GP or variant EBOV GP. Odesivimab did not demonstrate any neutralizing activity in this assay. The results of this assay are shown in [Table 8](#).

Table 8: Summary of Reduced VLP Neutralizing Activities of Atoltivimab, Maftivimab and INMAZEB*

<i>Orthoebolavirus zairense</i> Variant	Reduced Neutralizing Activity of Atoltivimab Alone	Reduced Neutralizing Activity of Maftivimab Alone	Reduced Neutralizing Activity of INMAZEB
P34S	NC [†]	NC [†]	NC [†]
N40D	NC [†]	NC [†]	NC [†]
T144M	NC [†]	NC [†]	NC [†]
P209T	NC [†]	NC [†]	NC [†]
Q221K	NC [†]	NC [†]	NC [†]
G224D	NC [†]	NC [†]	NC [†]
L239S	NC [†]	NC [†]	NC [†]
K265M	>506-fold	NC [†]	NC [†]
G271E	NC [†]	NC [†]	NC [†]
L273P	>506-fold	NC [†]	NC [†]
I274M	NC [†]	NC [†]	NC [†]
W275L	>170-fold [‡]	NC [†]	NC [†]
E280G	>445-fold [‡]	6-fold	9-fold
E304A	>506-fold	NC [†]	NC [†]
S347F	NC [†]	NC [†]	NC [†]
R501G	NC [†]	NC [†]	NC [†]
A507S	NC [†]	NC [†]	NC [†]
A507T	NC [†]	NC [†]	NC [†]
I527T	NC [†]	NC [†]	NC [†]
G528R	NC [†]	>81-fold	NC [†]
F535L	NC [†]	NC [†]	NC [†]
T544I	NC [†]	NC [†]	NC [†]
H549R	NC [†]	NC [†]	NC [†]
N563T	NC [†]	>81-fold [‡]	NC [†]
E564A	NC [†]	38-fold	5-fold
E564K	5-fold	>451-fold [‡]	6-fold
K588N	NC [†]	NC [†]	NC [†]

* A fold reduction in neutralization activity for odesivimab could not be calculated because concentration-dependent activity was not observed within the tested range of concentrations

† NC, no change: <4.3-fold reduction in neutralization activity compared to EBOV Makona 2014 reference GP. A <4.3-fold change in EC₅₀ value is within the inherent variability of this assay. However, the <4.3 fold-change threshold cannot rule out the possibility that substitutions that lead to fold-changes below this threshold have a meaningful impact on neutralization. The clinical significance of a ≥ 4.3-fold reduction in neutralization activity is unknown

‡ Where an EC₅₀ value could not be accurately calculated, the change in mAb potency in the presence of each mutant was calculated by dividing the maximum antibody concentration tested (66.67nM) by the EC₅₀ value calculated for REGN3470, REGN3471, REGN3479, and REGEN-EB3 in the presence of reference VLP

Antibody-dependent Cellular Cytotoxicity

The potential to mediate antibody-dependent cellular cytotoxicity (ADCC) was assessed using a surrogate ADCC reporter bioassay measuring FCGR3A signaling. Maftivimab did not demonstrate any ADCC activity in this assay. The results of this assay are shown in [Table 9](#).

Table 9: Summary of Reduced ADCC Activities of Atoltivimab, Odesivimab, and INMAZEB*

<i>Orthoebolavirus zairensis</i> Variant	Reduced ADCC Activity of Atoltivimab	Reduced ADCC activity of Odesivimab	Reduced ADCC activity of INMAZEB
P34S	NC [†]	NC [†]	NC [†]
N40D	NC [†]	NC [†]	NC [†]
T144M	NC [†]	>59-fold [‡]	NC [†]
P209T	NC [†]	4-fold	NC [†]
Q221K	NC [†]	3-fold	NC [†]
G224D	NC [†]	>59-fold [‡]	NC [†]
L239S	NC [†]	5-fold	3-fold
K265M	65-fold	6-fold	28-fold
G271E	NC [†]	24-fold	NC [†]
L273P	10-fold	6-fold	19-fold
I274M	NC [†]	NC [†]	6-fold
W275L	25-fold	NC [†]	8-fold
E280G	>237-fold [‡]	NC [†]	6-fold
E304A	NC [†]	NC [†]	NC [†]
S347F	NC [†]	3-fold	NC [†]
R501G	NC [†]	NC [†]	NC [†]
A507S	NC [†]	12-fold	NC [†]
A507T	NC [†]	10-fold	NC [†]
I527T	NC [†]	6-fold	NC [†]
G528R	NC [†]	NC [†]	NC [†]
F535L	NC [†]	8-fold	NC [†]
T544I	NC [†]	NC [†]	NC [†]
H549R	NC [†]	7-fold	4-fold
N563T	NC [†]	NC [†]	NC [†]
E564A	NC [†]	NC [†]	NC [†]
E564K	NC [†]	NC [†]	NC [†]
K588N	NC [†]	NC [†]	NC [†]

* A fold reduction in ADCC activity for maftivimab and antibody responses to select variants could not be calculated because concentration-dependent activity was not observed within the tested range of concentrations

† NC, no change: <2.9-fold reduction in ADCC activity compared to EBOV Makona 2014 reference GP. A <2.9-fold change in ADCC activity is within the inherent variability of this assay. However, the <2.9 fold-change

threshold cannot rule out the possibility that substitutions that lead to fold-changes below this threshold have a meaningful impact on ADCC activity. The clinical significance of a ≥ 2.9 -fold reduction in ADCC activity is unknown

‡ Where an EC₅₀ value could not be accurately calculated, fold change in EC₅₀ in the presence of each mutant was calculated by dividing the maximum antibody concentration tested (100nM) by the EC₅₀ value calculated for REGN3470, REGN3471 with ADCC activity obtained with target cells expressing reference EBOV GP (EBOV Makona 2014)

Immune Response

Interaction studies with recombinant live EBOV vaccines and INMAZEB have not been conducted [see *Drug Interactions (7.1)*].

13 NONCLINICAL TOXICOLOGY

13.1 Carcinogenesis, Mutagenesis, Impairment of Fertility

Carcinogenicity, genotoxicity, and fertility studies have not been conducted with INMAZEB.

14 CLINICAL STUDIES

The efficacy of INMAZEB was evaluated in PALM, a multi-center, open-label, randomized controlled trial sponsored by the National Institute of Allergy and Infectious Diseases (NIAID; NCT03719586). The trial was conducted in the Democratic Republic of Congo, where an outbreak began in August 2018, and enrolled 681 subjects of all ages, including pregnant women, with documented *Orthoebolavirus zairense* infection and symptoms of any duration who were receiving optimized standard of care (oSOC). Subjects were randomized to receive INMAZEB (50 mg of atoltivimab, 50 mg of maftivimab, and 50 mg of odesivimab per kg) intravenously as a single infusion, an investigational control 50 mg/kg intravenously every third day, for a total of 3 doses, or other investigational drugs. Eligible subjects had a positive reverse transcriptase-polymerase chain reaction (RT-PCR) for the nucleoprotein (NP) gene of *Orthoebolavirus zairense* and had not received other investigational treatments (with the exception of experimental vaccines) within the previous 30 days. Neonates ≤ 7 days of age were eligible if the mother had documented infection. Neonates born to a mother who had cleared *Orthoebolavirus zairense* following a course of her assigned investigational medication were also eligible to be enrolled at investigator discretion regarding the likelihood that the neonate was infected. Randomization was stratified by reverse transcription-PCR cycle threshold calculated using NP targets (CtNP ≤ 22.0 vs >22.0 ; corresponding to high and low viral load, respectively) and Ebola Treatment Unit (ETU) site. All subjects received oSOC consisting of a minimum of intravenous fluids, daily clinical laboratory testing, correction of hypoglycemia and electrolyte imbalances, and broad-spectrum antibiotics and antimalarials, as indicated.

The primary efficacy endpoint was 28-day mortality. The primary analysis population includes all subjects who were randomized and concurrently eligible to receive either INMAZEB or the investigational control during the same time period of the trial.

The demographics and baseline characteristics are provided in [Table 10](#) below.

Table 10: Demographics and Baseline Characteristics in PALM Trial

Parameter	INMAZEB (N=154)	Control (N=153)
Mean age (years)	28	31
Age <1 month (%)	1 (1%)	2 (1%)
Age 1 month to <1 year (%)	4 (3%)	1 (1%)
Age 1 year to < 6 years (%)	18 (12%)	13 (8%)
Age 6 years to <12 years (%)	8 (5%)	4 (3%)
Age 12 years to <18 years (%)	8 (5%)	8 (5%)
Age 18 years to <50 years (%)	93 (60%)	105 (69%)
Age 50 years to <65 years (%)	17 (11%)	18 (12%)
Age ≥65 years (%)	5 (3%)	2 (1%)
Female (%)	90 (58%)	80 (52%)
Positive result on pregnancy test*, n (%)	2/67 (3%)	4/61 (7%)
RT-PCR CtNP cycle threshold ≤22, n	66	64
Median RT-PCR CtNP (IQR)	22.7 (20.1, 28.1)	22.9 (18.8, 26.4)
Median creatinine (IQR)	1.0 (0.7, 4.0)	1.1 (0.7, 3.2)
Median AST (IQR)	225.5 (98.0, 941.0)	351.0 (109, 1404.0)
Median ALT (IQR)	165.0 (56.0, 418.0)	223.5 (47.0, 564.0)
Median days from onset of symptoms to randomization (IQR)	5.0 (3.0, 7.0)	5.0 (3.0, 7.0)
Reported Vaccination with rVSV-ZEBOV vaccine, n (%)	34 (22%)	41 (27%)
<10 days before ETU admission	20/34 (59%)	21/41 (51%)
≥10 days before ETU admission	14/34 (41%)	18/41 (44%)
Timing unknown	0/34 (0%)	2/41 (5%)

CtNP = cycle threshold calculated using NP targets; IQR = interquartile range; AST=Aspartate aminotransferase; ALT=Alanine aminotransferase; ETU=Ebola treatment unit

* Pregnancy positive test was calculated based on subjects who had pregnancy test result.

The PALM trial was stopped early on the basis of a pre-specified interim analysis showing a statistically significant reduction in mortality for INMAZEB compared to control.

Mortality efficacy results are shown in [Table 11](#).

Table 11: Mortality Rates in PALM Trial

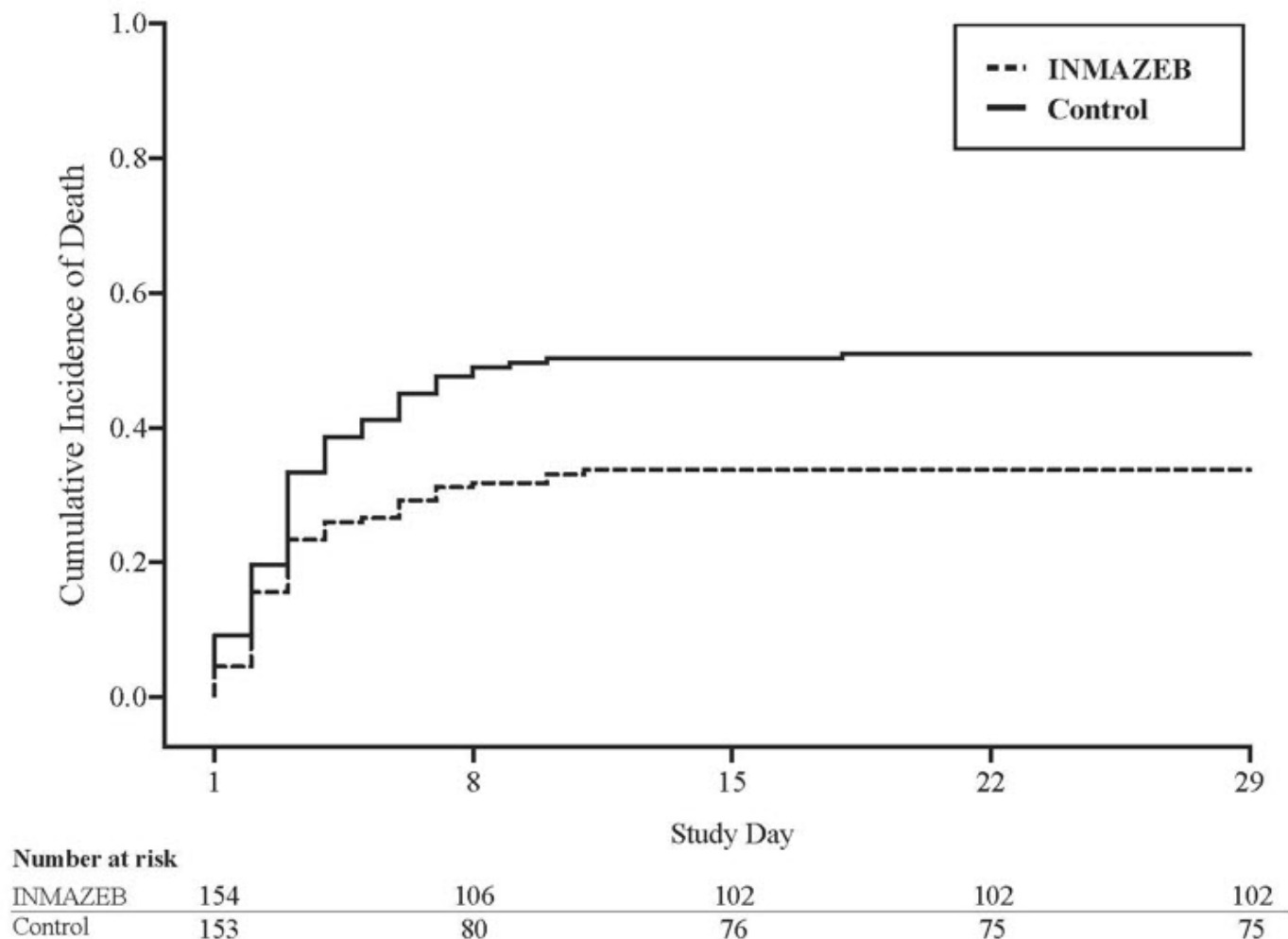
Efficacy Endpoints	INMAZEB* (N=154)	Control* (N=153)
Overall		
28-day mortality, n (%)	52 (34%)	78 (51%)
Mortality rate difference relative to control (95% CI)	-17.2 (-28.4, -2.6)	
p-Value†	0.0024	
Baseline Viral Load		
High viral load (CtNP ≤ 22)‡	n=66	n=64
28-day mortality, n (%)	42 (64%)	56 (88%)
Mortality rate difference relative to control (95% CI)	-23.9 (-43.8, -6.4)	
Low viral load (CtNP > 22)‡	n=88	n=88
28-day mortality, n (%)	10 (11%)	22 (25%)
Mortality rate difference relative to control (95% CI)	-13.6 (-31.8, -1.4)	
Age group		
Adults (age ≥18 years)	39/115 (34%)	67/125 (54%)
12 to < 18 years of age	2/8 (25%)	4/8 (50%)
6 to < 12 years of age	1/8 (13%)	1/4 (25%)
< 6 years of age	10/23 (43%)	6/16 (38%)
Sex		
Male	21/64 (33%)	31/73 (42%)
Female	31/90 (34%)	47/80 (59%)

* Both INMAZEB and Control were administered with optimized standard of care

† The result is significant according to the interim stopping boundary, p<0.028

‡ Cepheid GeneXpert Ebola® Assay used for detection of *Orthoebolavirus zairense* RNA

Figure 1: Kaplan-Meier Curve for Overall Mortality



16 HOW SUPPLIED/STORAGE AND HANDLING

INMAZEB (atoltivimab, maftivimab, and odesivimab-ebgn) injection is a clear to slightly opalescent and colorless to pale yellow solution. It is supplied in a carton containing one single dose vial of:

- 241.7 mg of atoltivimab, 241.7 mg of maftivimab, and 241.7 mg of odesivimab per 14.5 mL (16.67 mg/16.67 mg/16.67 mg per mL) (NDC 61755-018-01)
- 483.3 mg of atoltivimab, 483.3 mg of maftivimab, and 483.3 mg of odesivimab per 14.5 mL (33.33 mg/33.33 mg/33.33 mg per mL) (NDC 61755-019-01)

Prior to dilution

Store INMAZEB vial refrigerated at 2°C to 8°C (36°F to 46°F) in the original carton to protect from light. Do not freeze or shake.

After dilution

INMAZEB does not contain preservatives. It is always recommended to administer intravenous medication immediately after preparation when possible. Store the diluted INMAZEB solution as specified according to [Table 12](#) below. Do not freeze the diluted solution [see *Dosage and Administration* (2.2)].

Table 12: Diluted INMAZEB Solution Storage Conditions

Diluent Used to Prepare Solution for Infusion	Diluted INMAZEB Solution Storage Conditions
0.9% Sodium Chloride Injection, USP	Store at room temperature up to 25°C (77°F) for no more than 8 hours or refrigerated at 2°C to 8°C (36°F to 46°F) for no more than 24 hours.
5% Dextrose Injection, USP	Store at room temperature up to 25°C (77°F) for no more than 4 hours or refrigerated at 2°C to 8°C (36°F to 46°F) for no more than 24 hours.
Lactated Ringer's Injection, USP	Store at room temperature up to 25°C (77°F) for no more than 4 hours or refrigerated at 2°C to 8°C (36°F to 46°F) for no more than 4 hours.

17 PATIENT COUNSELING INFORMATION

Hypersensitivity Reactions Including Infusion-Associated Events

Inform patients that hypersensitivity reactions including infusion-associated events have been reported during and post-infusion with INMAZEB and to immediately report if they experience any symptoms of systemic hypersensitivity reactions [see *Warnings and Precautions (5.1)*].

Lactation

Instruct patients with *Orthoebolavirus zairense* infection not to breastfeed because of the risk of passing *Orthoebolavirus zairense* to the baby [see *Use in Specific Populations (8.2)*].

Manufactured by:

Regeneron Pharmaceuticals, Inc.

777 Old Saw Mill River Road

Tarrytown, NY 10591-6707

U.S. License No. 1760

INMAZEB is a registered trademark owned by Regeneron Pharmaceuticals, Inc.

©2024 Regeneron Pharmaceuticals, Inc. All rights reserved.

PRINCIPAL DISPLAY PANEL - 14.5 mL Vial Carton - 61755-018

NDC 61755-018-01

Rx only

Inmazed®

(atoltivimab, maftivimab,
and odesivimab – ebgn)

Injection

241.7 mg / 241.7 mg / 241.7 mg per 14.5 mL
(16.67 mg / 16.67 mg / 16.67 mg per mL)

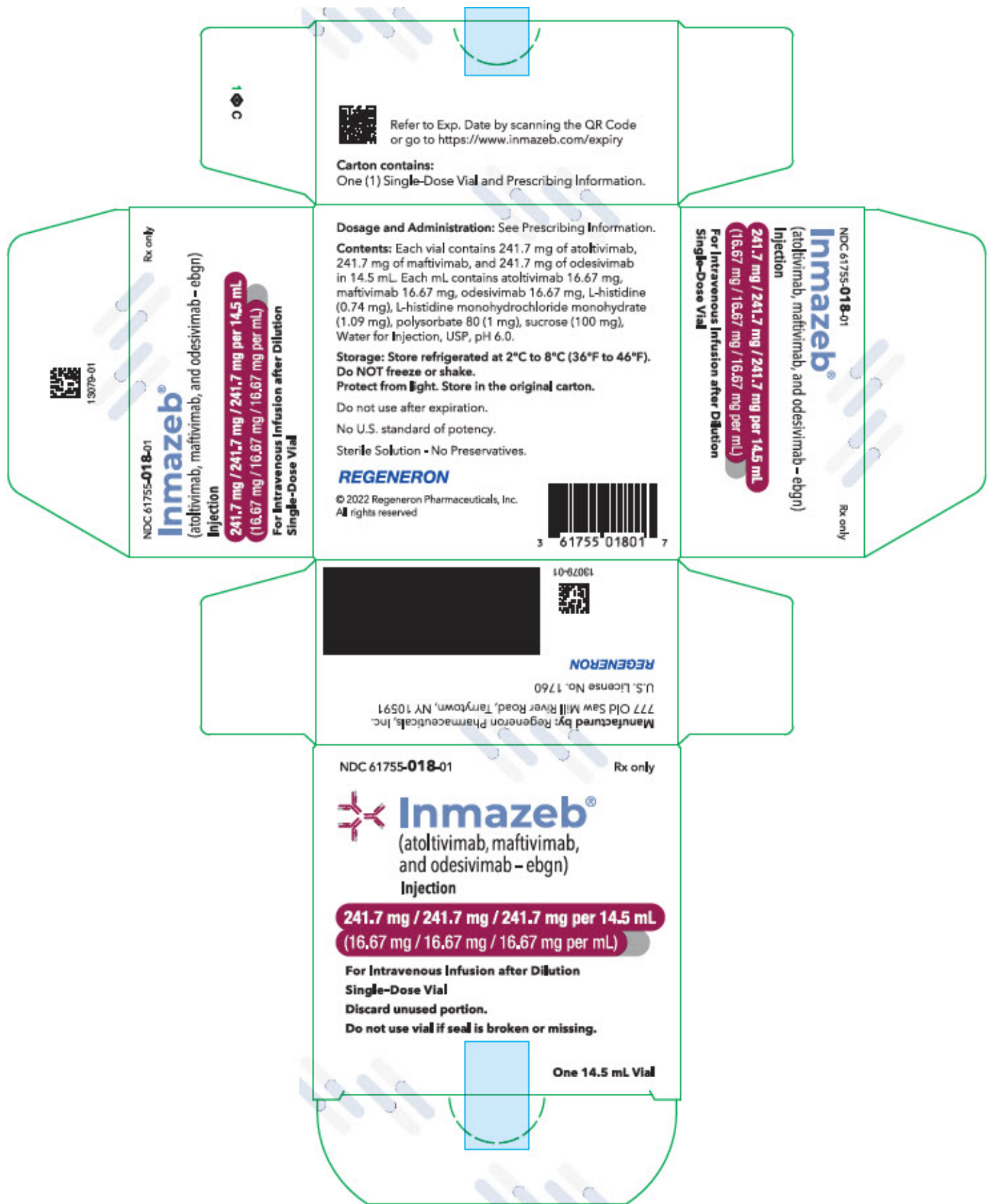
For Intravenous Infusion after Dilution

Single-Dose Vial

Discard unused portion.

Do not use vial if seal is broken or missing.

One 14.5 mL Vial



PRINCIPAL DISPLAY PANEL - 14.5 mL Vial Carton - 61755-019

NDC 61755-019-01

Rx only

Inmaze[®]

(atoltivimab, maftivimab,
and odesivimab – ebgn)

Injection

483.3 mg / 483.3 mg / 483.3 mg per 14.5 mL
(33.33 mg / 33.33 mg / 33.33 mg per mL)

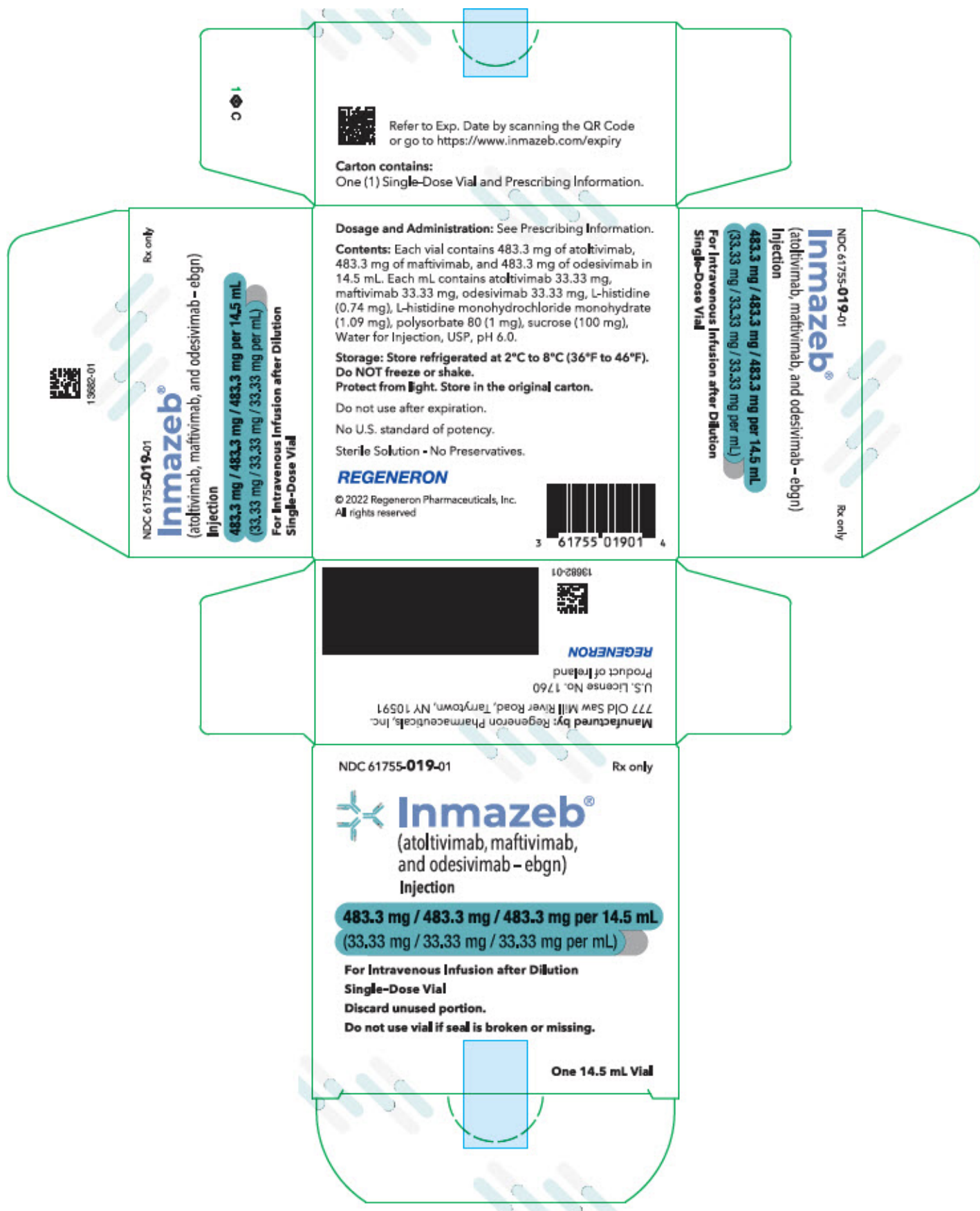
For Intravenous Infusion after Dilution

Single-Dose Vial

Discard unused portion.

Do not use vial if seal is broken or missing.

One 14.5 mL Vial



INMAZEB

atoltivimab, maftivimab, and odesivimab-ebgn injection, solution

Product Information				
Product Type	HUMAN PRESCRIPTION DRUG	Item Code (Source)	NDC:61755-018	
Route of Administration	INTRAVENOUS			
Active Ingredient/Active Moiety				
Ingredient Name		Basis of Strength	Strength	
atoltivimab (UNII: FJZ07Q63VY) (atoltivimab - UNII:FJZ07Q63VY)		atoltivimab	241.7 mg in 14.5 mL	
maftivimab (UNII: KOP95331M4) (maftivimab - UNII:KOP95331M4)		maftivimab	241.7 mg in 14.5 mL	
odesivimab (UNII: UY9LQ8P6HW) (odesivimab - UNII:UY9LQ8P6HW)		odesivimab	241.7 mg in 14.5 mL	
Inactive Ingredients				
Ingredient Name			Strength	
HISTIDINE (UNII: 4QD397987E)				
HISTIDINE MONOHYDROCHLORIDE MONOHYDRATE (UNII: X573657P6P)				
Polysorbate 80 (UNII: 6OZP39ZG8H)				
Sucrose (UNII: C151H8M554)				
Water (UNII: 059QF0KO0R)				
Packaging				
#	Item Code	Package Description	Marketing Start Date	Marketing End Date
1	NDC:61755-018-01	1 in 1 CARTON	10/14/2020	
1	NDC:61755-018-00	14.5 mL in 1 VIAL, SINGLE-DOSE; Type 0: Not a Combination Product		
Marketing Information				
Marketing Category		Application Number or Monograph Citation	Marketing Start Date	Marketing End Date
BLA		BLA761169	10/14/2020	

INMAZEB			
atoltivimab, maftivimab, and odesivimab-ebgn injection, solution			
Product Information			
Product Type	HUMAN PRESCRIPTION DRUG	Item Code (Source)	NDC:61755-019
Route of Administration	INTRAVENOUS		
Active Ingredient/Active Moiety			
Ingredient Name		Basis of Strength	Strength

atoltivimab (UNII: FJZ07Q63VY) (atoltivimab - UNII:FJZ07Q63VY)	atoltivimab	483.3 mg in 14.5 mL
maftivimab (UNII: KOP95331M4) (maftivimab - UNII:KOP95331M4)	maftivimab	483.3 mg in 14.5 mL
odesivimab (UNII: UY9LQ8P6HW) (odesivimab - UNII:UY9LQ8P6HW)	odesivimab	483.3 mg in 14.5 mL

Inactive Ingredients

Ingredient Name	Strength
HISTIDINE (UNII: 4QD397987E)	
HISTIDINE MONOHYDROCHLORIDE MONOHYDRATE (UNII: X573657P6P)	
Polysorbate 80 (UNII: 6OZP39ZG8H)	
Sucrose (UNII: C151H8M554)	
Water (UNII: 059QF0KO0R)	

Packaging

#	Item Code	Package Description	Marketing Start Date	Marketing End Date
1	NDC:61755-019-01	1 in 1 CARTON	07/29/2021	
1	NDC:61755-019-00	14.5 mL in 1 VIAL, SINGLE-DOSE; Type 0: Not a Combination Product		

Marketing Information

Marketing Category	Application Number or Monograph Citation	Marketing Start Date	Marketing End Date
BLA	BLA761169	07/29/2021	

Labeler - Regeneron Pharmaceuticals, Inc. (194873139)

Establishment

Name	Address	ID/FEI	Business Operations
Regeneron Pharmaceuticals, Inc.		945589711	API MANUFACTURE(61755-018) , ANALYSIS(61755-018, 61755-019)

Establishment

Name	Address	ID/FEI	Business Operations
Regeneron Ireland Designated Activity Company		986063166	ANALYSIS(61755-018, 61755-019) , API MANUFACTURE(61755-019)