

**CARPROFEN- carprofen tablet, chewable**  
**ZYVET ANIMAL HEALTH INC.**

-----

**Carprofen**

**Chewable Tablets**

**Non-steroidal anti-inflammatory drug**

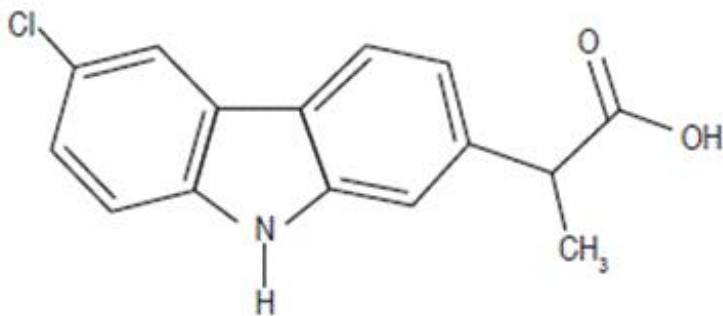
**For oral use in dogs only**

**CAUTION:**

Federal law restricts this drug to use by or on the order of a licensed veterinarian.

**DESCRIPTION:**

Carprofen is a non-steroidal anti-inflammatory drug (NSAID) of the propionic acid class that includes ibuprofen, naproxen, and ketoprofen. Carprofen is the nonproprietary designation for a substituted carbazole, 6-chloro- $\alpha$ -methyl-9H-carbazole-2-acetic acid. The empirical formula is C<sub>15</sub>H<sub>12</sub>ClNO<sub>2</sub> and the molecular weight 273.72. The chemical structure of carprofen is:



Carprofen is a white, crystalline compound. It is freely soluble in ethanol, but practically insoluble in water at 25°C.

**CLINICAL PHARMACOLOGY:**

Carprofen is a non-narcotic, non-steroidal anti-inflammatory agent with characteristic analgesic and antipyretic activity approximately equipotent to indomethacin in animal models.<sup>1</sup>

The mechanism of action of carprofen, like that of other NSAIDs, is believed to be associated with the inhibition of cyclooxygenase activity. Two unique cyclooxygenases have been described in mammals.<sup>2</sup>The constitutive cyclooxygenase, COX-1, synthesizes prostaglandins necessary for normal gastrointestinal and renal function. The inducible

cyclooxygenase, COX-2, generates prostaglandins involved in inflammation. Inhibition of COX-1 is thought to be associated with gastrointestinal and renal toxicity while inhibition of COX-2 provides anti-inflammatory activity. The specificity of a particular NSAID for COX-2 versus COX-1 may vary from species to species.<sup>3</sup>In an *in vitro* study using canine cell cultures, carprofen demonstrated selective inhibition of COX-2 versus COX-1.<sup>4</sup>Clinical relevance of these data has not been shown. Carprofen has also been shown to inhibit the release of several prostaglandins in two inflammatory cell systems: rat polymorphonuclear leukocytes (PMN) and human rheumatoid synovial cells, indicating inhibition of acute (PMN system) and chronic (synovial cell system) inflammatory reactions.<sup>1</sup>

Several studies have demonstrated that carprofen has modulatory effects on both humoral and cellular immune responses.<sup>5-9</sup> Data also indicate that carprofen inhibits the production of osteoclast-activating factor (OAF), PGE<sub>1</sub>, and PGE<sub>2</sub> by its inhibitory effect in prostaglandin biosynthesis.<sup>1</sup>

Based upon comparison with data obtained from intravenous administration, carprofen is rapidly and nearly completely absorbed (more than 90% bioavailable) when administered orally.<sup>10</sup> Peak blood plasma concentrations are achieved in 1-3 hours after oral administration of 1, 5, and 25 mg/kg to dogs. The mean terminal half-life of carprofen is approximately 8 hours (range 4.5-9.8 hours) after single oral doses varying from 1-35 mg/kg of body weight. After a 100 mg single intravenous bolus dose, the mean elimination half-life was approximately 11.7 hours in the dog. Carprofen is more than 99% bound to plasma protein and exhibits a very small volume of distribution.

Carprofen is eliminated in the dog primarily by biotransformation in the liver followed by rapid excretion of the resulting metabolites (the ester glucuronide of carprofen and the ether glucuronides of 2 phenolic metabolites, 7-hydroxy carprofen and 8-hydroxy carprofen) in the feces (70-80%) and urine (10-20%). Some enterohepatic circulation of the drug is observed.

## **INDICATIONS:**

Carprofen is indicated for the relief of pain and inflammation associated with osteoarthritis and for the control of postoperative pain associated with soft tissue and orthopedic surgeries in dogs.

## **CONTRAINDICATIONS:**

Carprofen should not be used in dogs exhibiting previous hypersensitivity to carprofen.

## **WARNINGS:**

Keep out of reach of children. Not for human use. Consult a physician in cases of accidental ingestion by humans. **For use in dogs only.** Do not use in cats. Keep Carprofen in a secure location out of reach of dogs, cats, and other animals to prevent accidental ingestion or overdose.

All dogs should undergo a thorough history and physical examination before initiation of NSAID therapy. Appropriate laboratory tests to establish hematological and serum biochemical baseline data prior to, and periodically during, administration of any NSAID

should be considered. **Owners should be advised to observe for signs of potential drug toxicity (see Information for Dog Owners, Adverse Reactions, Animal Safety and Post-Approval Experience).**

## **PRECAUTIONS:**

As a class, cyclooxygenase inhibitory NSAIDs may be associated with gastrointestinal, renal and hepatic toxicity. Effects may result from decreased prostaglandin production and inhibition of the enzyme cyclooxygenase which is responsible for the formation of prostaglandins from arachidonic acid.<sup>11-14</sup> When NSAIDs inhibit prostaglandins that cause inflammation they may also inhibit those prostaglandins which maintain normal homeostatic function. These anti-prostaglandin effects may result in clinically significant disease in patients with underlying or pre-existing disease more often than in healthy patients.<sup>12,14</sup> NSAID therapy could unmask occult disease which has previously been undiagnosed due to the absence of apparent clinical signs. Patients with underlying renal disease for example, may experience exacerbation or decompensation of their renal disease while on NSAID therapy.<sup>11-14</sup> The use of parenteral fluids during surgery should be considered to reduce the potential risk of renal complications when using NSAIDs perioperatively.

Carprofen is an NSAID, and as with others in that class, adverse reactions may occur with its use. The most frequently reported effects have been gastrointestinal signs. Events involving suspected renal, hematologic, neurologic, dermatologic, and hepatic effects have also been reported. Patients at greatest risk for renal toxicity are those that are dehydrated, on concomitant diuretic therapy, or those with renal, cardiovascular, and/or hepatic dysfunction. Concurrent administration of potentially nephrotoxic drugs should be approached cautiously, with appropriate monitoring. Concomitant use of Carprofen with other anti-inflammatory drugs, such as other NSAIDs or corticosteroids, should be avoided because of the potential increase of adverse reactions, including gastrointestinal ulcerations and/or perforations. Sensitivity to drug-associated adverse reactions varies with the individual patient. Dogs that have experienced adverse reactions from one NSAID may experience adverse reactions from another NSAID. Carprofen treatment was not associated with renal toxicity or gastrointestinal ulceration in well-controlled safety studies of up to ten times the dose in healthy dogs.

Carprofen is not recommended for use in dogs with bleeding disorders (e.g., Von Willebrand's disease), as safety has not been established in dogs with these disorders. The safe use of Carprofen in animals less than 6 weeks of age, pregnant dogs, dogs used for breeding purposes, or in lactating bitches has not been established. Studies to determine the activity of Carprofen when administered concomitantly with other protein-bound or similarly metabolized drugs have not been conducted. Drug compatibility should be monitored closely in patients requiring additional therapy. Such drugs commonly used include cardiac, anticonvulsant and behavioral medications. It has been suggested that treatment with carprofen may reduce the level of inhalant anesthetics needed.<sup>15</sup>

If additional pain medication is warranted after administration of total daily dose of Carprofen, alternative analgesia should be considered. The use of another NSAID is not recommended. Consider appropriate washout times when switching from one NSAID to another or when switching from corticosteroids use to NSAID use.

Due to the flavoring contained in Carprofen chewable tablets, store out of reach of dogs

in a secured location. Severe adverse reactions may occur if large quantities of tablets are ingested. If you suspect your dog has consumed Carprofen chewable tablets above the labeled dose, please call your veterinarian for immediate assistance and notify ZyVet Animal Health Inc. 1-877-779-9838.

### **INFORMATION FOR DOG OWNERS:**

Carprofen, like other drugs of its class, is not free from adverse reactions. Owners should be advised of the potential for adverse reactions and be informed of the clinical signs associated with drug intolerance. Adverse reactions may include decreased appetite, vomiting, diarrhea, dark or tarry stools, increased water consumption, increased urination, pale gums due to anemia, yellowing of gums, skin or white of the eye due to jaundice, lethargy, incoordination, seizure, or behavioral changes. **Serious adverse reactions associated with this drug class can occur without warning and in rare situations result in death (see Adverse Reactions). Owners should be advised to discontinue Carprofen therapy and contact their veterinarian immediately if signs of intolerance are observed.** The vast majority of patients with drug related adverse reactions have recovered when the signs are recognized, the drug is withdrawn, and veterinary care, if appropriate, is initiated. Owners should be advised of the importance of periodic follow up for all dogs during administration of any NSAID.

### **ADVERSE REACTIONS:**

During investigational studies for the caplet formulation with twice daily administration of 1 mg/lb, no clinically significant adverse reactions were reported. Some clinical signs were observed during field studies (n=297) which were similar for carprofen caplet- and placebo-treated dogs. Incidences of the following were observed in both groups: vomiting (4%), diarrhea (4%), changes in appetite (3%), lethargy (1.4%), behavioral changes (1%), and constipation (0.3%). The product vehicle served as control.

There were no serious adverse events reported during clinical field studies with once daily administration of 2 mg/lb. The following categories of abnormal health observations were reported. The product vehicle served as control.

<b>Percentage of Dogs with Abnormal Health Observations Reported in Clinical Field Study (2 mg/lb once daily)</b>		
<b>Observation</b>	<b>carprofen (n=129)</b>	<b>Placebo (n=132)</b>
Inappetence	1.6	1.5
Vomiting	3.1	3.8
Diarrhea/Soft stool	3.1	4.5
Behavior change	0.8	0.8
Dermatitis	0.8	0.8
PU/PD	0.8	—
SAP increase	7.8	8.3
ALT increase	5.4	4.5

AST increase	2.3	0.8
BUN increase	3.1	1.5
Bilirubinuria	16.3	12.1
Ketonuria	14.7	9.1

Clinical pathology parameters listed represent reports of increases from pre-treatment values; medical judgment is necessary to determine clinical relevance.

During investigational studies of surgical pain for the caplet formulation, no clinically significant adverse reactions were reported. The product vehicle served as control.

<b>Percentage of Dogs with Abnormal Health Observations Reported in Surgical Pain Field Studies with Caplets (2 mg/lb once daily)</b>		
<b>Observation*</b>	<b>carprofen (n=148)</b>	<b>Placebo (n=149)</b>
Vomiting	10.1	13.4
Diarrhea/Soft stool	6.1	6.0
Ocular disease	2.7	0
Inappetence	1.4	0
Dermatitis/Skin lesion	2.0	1.3
Dysrhythmia	0.7	0
Apnea	1.4	0
Oral/Periodontal disease	1.4	0
Pyrexia	0.7	1.3
Urinary tract disease	1.4	1.3
Wound drainage	1.4	0

\*A single dog may have experienced more than one occurrence of an event.

During investigational studies for the chewable tablet formulation, gastrointestinal signs were observed in some dogs. These signs included vomiting and soft stools.

Post-Approval Experience:

Although not all adverse reactions are reported, the following adverse reactions are based on voluntary post-approval adverse drug experience reporting. The categories of adverse reactions are listed in decreasing order of frequency by body system.

*Gastrointestinal: Vomiting, diarrhea, constipation, inappetence, melena, hematemesis, gastrointestinal ulceration, gastrointestinal bleeding, pancreatitis.*

*Hepatic: Inappetence, vomiting, jaundice, acute hepatic toxicity, hepatic enzyme elevation, abnormal liver function test(s), hyperbilirubinemia, bilirubinuria, hypoalbuminemia. Approximately one-fourth of hepatic reports were in Labrador*

*Retrievers.*

Neurologic: *Ataxia, paresis, paralysis, seizures, vestibular signs, disorientation.*

Urinary: *Hematuria, polyuria, polydipsia, urinary incontinence, urinary tract infection, azotemia, acute renal failure, tubular abnormalities including acute tubular necrosis, renal tubular acidosis, glucosuria.*

Behavioral: *Sedation, lethargy, hyperactivity, restlessness, aggressiveness.*

Hematologic: *Immune-mediated hemolytic anemia, immune-mediated thrombocytopenia, blood loss anemia, epistaxis.*

Dermatologic: *Pruritus, increased shedding, alopecia, pyotraumatic moist dermatitis (hot spots), necrotizing panniculitis/vasculitis, ventral ecchymosis.*

Immunologic or hypersensitivity: *Facial swelling, hives, erythema.*

In rare situations, death has been associated with some of the adverse reactions listed above.

To report suspected adverse drug events, for technical assistance or to obtain a copy of the Safety Data Sheet (SDS), contact ZyVet Animal Health Inc. at 1-877-779-9838. For additional information about adverse drug experience reporting for animal drugs, contact FDA at 1-888-FDA-VETS or <http://www.fda.gov/reportanimalae>.

## **DOSAGE AND ADMINISTRATION:**

Always provide Client Information Sheet with prescription. Carefully consider the potential benefits and risk of Carprofen and other treatment options before deciding to use Carprofen. Use the lowest effective dose for the shortest duration consistent with individual response. The recommended dosage for oral administration to dogs is 2 mg/lb of body weight daily. The total daily dose may be administered as 2 mg/lb of body weight once daily or divided and administered as 1 mg/lb twice daily. For the control of postoperative pain, administer approximately 2 hours before the procedure. Carprofen chewable tablets are scored and dosage should be calculated in half-tablet increments. Tablets can be halved by placing the tablet on a hard surface and pressing down on both sides of the score. Carprofen chewable tablets may be fed by hand or placed on food. Care should be taken to ensure that the dog consumes the complete dose.

## **EFFECTIVENESS:**

Confirmation of the effectiveness of carprofen for the relief of pain and inflammation associated with osteoarthritis, and for the control of postoperative pain associated with soft tissue and orthopedic surgeries, was demonstrated in 5 placebo-controlled, masked studies examining the anti-inflammatory and analgesic effectiveness of carprofen caplets in various breeds of dogs.

Separate placebo-controlled, masked, multicenter field studies confirmed the anti-inflammatory and analgesic effectiveness of carprofen caplets when dosed at 2 mg/lb once daily or when divided and administered at 1 mg/lb twice daily. In these 2 field studies, dogs diagnosed with osteoarthritis showed statistically significant overall improvement based on lameness evaluations by the veterinarian and owner

observations when administered carprofen at labeled doses.

Separate placebo-controlled, masked, multicenter field studies confirmed the effectiveness of carprofen caplets for the control of postoperative pain when dosed at 2 mg/lb once daily in various breeds of dogs. In these studies, dogs presented for ovariohysterectomy, cruciate repair and aural surgeries were administered carprofen preoperatively and for a maximum of 3 days (soft tissue) or 4 days (orthopedic) postoperatively. In general, dogs administered carprofen showed statistically significant reduction in pain scores compared to controls.

## **ANIMAL SAFETY:**

Laboratory studies in unanesthetized dogs and clinical field studies have demonstrated that carprofen is well tolerated in dogs after oral administration.

In target animal safety studies, carprofen was administered orally to healthy Beagle dogs at 1, 3, and 5 mg/lb twice daily (1, 3 and 5 times the recommended total daily dose) for 42 consecutive days with no significant adverse reactions. Serum albumin for a single female dog receiving 5 mg/lb twice daily decreased to 2.1 g/dL after 2 weeks of treatment, returned to the pre-treatment value (2.6 g/dL) after 4 weeks of treatment, and was 2.3 g/dL at the final 6-week evaluation. Over the 6-week treatment period, black or bloody stools were observed in 1 dog (1 incident) treated with 1 mg/lb twice daily and in 1 dog (2 incidents) treated with 3 mg/lb twice daily. Redness of the colonic mucosa was observed in 1 male that received 3 mg/lb twice daily.

Two of 8 dogs receiving 10 mg/lb orally twice daily (10 times the recommended total daily dose) for 14 days exhibited hypoalbuminemia. The mean albumin level in the dogs receiving this dose was lower (2.38 g/dL) than each of 2 placebo control groups (2.88 and 2.93 g/dL, respectively). Three incidents of black or bloody stool were observed in 1 dog. Five of 8 dogs exhibited reddened areas of duodenal mucosa on gross pathologic examination. Histologic exam of these areas revealed no evidence of ulceration, but did show minimal congestion of the lamina propria in 2 of the 5 dogs.

In separate safety studies lasting 13 and 52 weeks, respectively, dogs were administered orally up to 11.4 mg/lb/day (5.7 times the recommended total daily dose of 2 mg/lb) of carprofen. In both studies, the drug was well tolerated clinically by all of the animals. No gross or histologic changes were seen in any of the treated animals. In both studies, dogs receiving the highest doses had average increases in serum L-alanine aminotransferase (ALT) of approximately 20 IU.

In the 52-week study, minor dermatologic changes occurred in dogs in each of the treatment groups but not in the control dogs. The changes were described as slight redness or rash and were diagnosed as non-specific dermatitis. The possibility exists that these mild lesions were treatment related, but no dose relationship was observed.

Clinical field studies were conducted with 549 dogs of different breeds at the recommended oral doses for 14 days (297 dogs were included in a study evaluating 1 mg/lb twice daily and 252 dogs were included in a separate study evaluating 2 mg/lb once daily). In both studies the drug was clinically well tolerated and the incidence of clinical adverse reactions for carprofen-treated animals was no higher than placebo-treated animals (placebo contained inactive ingredients found in carprofen). For animals receiving 1 mg/lb twice daily, the mean post-treatment serum ALT values were 11 IU

greater and 9 IU less than pre-treatment values for dogs receiving carprofen and placebo, respectively. Differences were not statistically significant. For animals receiving 2 mg/lb once daily, the mean post-treatment serum ALT values were 4.5 IU greater and 0.9 IU less than pre-treatment values for dogs receiving carprofen and placebo, respectively. In the latter study, 3 carprofen-treated dogs developed a 3-fold or greater increase in (ALT) and/or (AST) during the course of therapy. One placebo-treated dog had a greater than 2-fold increase in ALT. None of these animals showed clinical signs associated with laboratory value changes. Changes in the clinical laboratory values (hematology and clinical chemistry) were not considered clinically significant. The 1 mg/lb twice daily course of therapy was repeated as needed at 2-week intervals in 244 dogs, some for as long as 5 years.

Clinical field studies were conducted in 297 dogs of different breeds undergoing orthopedic or soft tissue surgery. Dogs were administered 2 mg/lb of carprofen two hours prior to surgery then once daily, as needed for 2 days (soft tissue surgery) or 3 days (orthopedic surgery). Carprofen was well tolerated when used in conjunction with a variety of anesthetic-related drugs. The type and severity of abnormal health observation in carprofen-and placebo-treated animals were approximately equal and few in number (see Adverse Reactions). The most frequent abnormal health observation was vomiting and was observed at approximately the same frequency in carprofen-and placebo-treated animals. Changes in clinicopathologic indices of hematopoietic, renal, hepatic, and clotting function were not clinically significant. The mean post-treatment serum ALT values were 7.3 IU and 2.5 IU less than pre-treatment values for dogs receiving carprofen and placebo, respectively. The mean post-treatment AST values were 3.1 IU less for dogs receiving carprofen and 0.2 IU greater for dogs receiving placebo.

#### **STORAGE:**

Store up to 25°C (77°F), excursions permitted to 40°C (104°F).

#### **HOW SUPPLIED:**

Carprofen chewable tablets are scored, and contain 25 mg, 75 mg or 100 mg of carprofen per tablet. Each tablet size is packaged in bottles containing 30, 60 or 180 tablets.

#### **REFERENCES:**

1. Baruth H, *et al*: In Anti-Inflammatory and Anti-Rheumatic Drugs, Vol. II, Newer Anti-Inflammatory Drugs, Rainsford KD, ed. CRC Press, Boca Raton, p. 33, 1986.
2. Vane JR, Botting RM: Mechanism of action of anti-inflammatory drugs. *Scand J Rheumatol* 25:102, pp. 9-21.
3. Grossman CJ, Wiseman J, Lucas FS, *et al*: Inhibition of constitutive and inducible cyclooxygenase activity in human platelets and mononuclear cells by NSAIDs and COX-2 inhibitors. *Inflammation Research* 44:253-257, 1995.
4. Ricketts AP, Lundy KM, Seibel SB: Evaluation of selective inhibition of canine cyclooxygenase 1 and 2 by carprofen and other nonsteroidal anti-inflammatory drugs.



*Am J Vet Res* 59:11, pp. 1441-1446, November 1998.

5. Ceuppens JL, *et al*: Non-steroidal anti-inflammatory agents inhibit the synthesis of IgM rheumatoid factor *in vitro*. *Lancet* 1:528, 1982.

6. Ceuppens JL, *et al*: Endogenous prostaglandin E<sub>2</sub> enhances polyclonal immunoglobulin production by ionically inhibiting T suppressor cell activity. *Cell Immunol* 70:41, 1982.

7. Schleimer RP, *et al*: The effects of prostaglandin synthesis inhibition on the immune response. *Immunopharmacology* 3:205, 1981.

8. Leung KH, *et al*: Modulation of the development of cell mediated immunity: Possible roles of the products of cyclooxygenase and lipoxygenase pathways of arachidonic acid metabolism. *Int J Immunopharmacology* 4:195, 1982.

9. Veit BC: Immunoregulatory activity of cultured-induced suppressor macrophages. *Cell Immunol* 72:14, 1982.

10. Schmitt M, *et al*: Biopharmaceutical evaluation of carprofen following single intravenous, oral, and rectal doses in dogs. *Biopharm Drug Dispos* 11(7):585, 1990.

11. Kore AM: Toxicology of nonsteroidal anti-inflammatory drugs. *Veterinary Clinics of North America, Small Animal Practice* 20, March 1990.

12. Binns SH: Pathogenesis and pathophysiology of ischemic injury in cases of acute renal failure. *Compend for Cont Ed* 16:1, January 1994.

13. Boothe DM: Prostaglandins: Physiology and clinical implications. *Compend for Cont Ed* 6:11, November 1984.

14. Rubin SI: Nonsteroidal anti-inflammatory drugs, prostaglandins, and the kidney. *JAVMA* 188:9, May 1986.

15. Ko CH, Lange DN, Mandsager RE, *et al*: Effects of butorphanol and carprofen on the minimal alveolar concentration of isoflurane in dogs. *JAVMA* 217:1025-1028, 2000.

To report suspected adverse drug events, for technical assistance or to obtain a copy of the SDS, contact ZyVet Animal Health Inc. at 1-877-779-9838. For additional information about adverse drug experience reporting for animal drugs, contact FDA at 1-888-FDA-VETS or <http://www.fda.gov/reportanimalae>.

Approved by FDA under ANADA # 200-739

**Manufactured by:**

Zydus Animal Health and Investments Limited, Ahmedabad, India

**Distributed by:**

ZyVet Animal Health Inc.

Pennington, NJ 08534

**Dog Owner Information about**

**Carprofen**

Chewable Tablets

for Osteoarthritis and Post-Surgical Pain

Generic name: carprofen ("car-prō-fen")

This summary contains important information about Carprofen. You should read this information before you start giving your dog Carprofen and review it each time the prescription is refilled. This sheet is provided only as a summary and does not take the place of instructions from your veterinarian. Talk to your veterinarian if you do not understand any of this information or if you want to know more about Carprofen.

### **What is Carprofen?**

Carprofen is a nonsteroidal anti-inflammatory drug (NSAID) that is used to reduce pain and inflammation (soreness) due to osteoarthritis and pain following surgery in dogs. Carprofen is a prescription drug for dogs. It is available as a square shaped chewable tablet and is given to dogs by mouth. Osteoarthritis (OA) is a painful condition caused by "wear and tear" of cartilage and other parts of the joints that may result in the following changes or signs in your dog:

- Limping or lameness
- Decreased activity or exercise (reluctance to stand, climb stairs, jump or run, or difficulty in performing these activities)
- Stiffness or decreased movement of joints

To control surgical pain (e.g. for surgeries such as spays, ear procedures or orthopedic repairs) your veterinarian may administer Carprofen before the procedure and recommend that your dog be treated for several days after going home.

### **What kind of results can I expect when my dog is on Carprofen?**

While Carprofen is not a cure for osteoarthritis, it can relieve the pain and inflammation of OA and improve your dog's mobility.

- Response varies from dog to dog but can be quite dramatic.
- In most dogs, improvement can be seen in a matter of days.
- If Carprofen is discontinued or not given as directed, your dog's pain and inflammation may come back.

### **Who should not take Carprofen?**

Your dog should not be given Carprofen if he/she:

- Has had an allergic reaction to carprofen, the active ingredient of Carprofen.
- Has had an allergic reaction to aspirin or other NSAIDs

(for example deracoxib, etodolac, firocoxib, meloxicam, phenylbutazone or tepoxalin) such as hives, facial swelling, or red or itchy skin.

**Carprofen should be given to dogs only.** Cats should not be given Carprofen. Call your veterinarian immediately if your cat receives Carprofen. People should not take Carprofen. Keep Carprofen and all medicines out of reach of children. Call your physician immediately if you accidentally take Carprofen.

### **How to give Carprofen to your dog.**

Carprofen should be given according to your veterinarian's instructions. Your veterinarian will tell you what amount of Carprofen is right for your dog and for how long it should be given. Most dogs will take Carprofen chewable tablets right out of your hand or the tablet can be placed in the mouth. Carprofen may be given with or without food.

### **What to tell/ask your veterinarian before giving Carprofen.**

Talk to your veterinarian about:

- The signs of OA you have observed (for example limping, stiffness).
- The importance of weight control and exercise in the management of OA.
- What tests might be done before Carprofen is prescribed.
- How often your dog may need to be examined by your veterinarian.
- The risks and benefits of using Carprofen.

Tell your veterinarian if your dog has ever had the following medical problems:

- Experienced side effects from Carprofen or other NSAIDs, such as aspirin
- Digestive upset (vomiting and/or diarrhea)
- Liver disease
- Kidney disease
- A bleeding disorder (for example, Von Willebrand's disease)

Tell your veterinarian about:

- Any other medical problems or allergies that your dog has now or has had.
- All medicines that you are giving your dog or plan to give your dog, including those you can get without a prescription.

Tell your veterinarian if your dog is:

- Pregnant, nursing or if you plan to breed your dog.

### **What are the possible side effects that may occur in my dog during Carprofen therapy?**

Carprofen, like other drugs, may cause some side effects. Serious but rare side effects have been reported in dogs taking NSAIDs, including Carprofen. Serious side effects can occur with or without warning and in rare situations result in death.

The most common NSAID-related side effects generally involve the stomach (such as bleeding ulcers), and liver or kidney problems. Look for the following side effects that can indicate your dog may be having a problem with Carprofen or may have another medical problem:

- Decrease or increase in appetite
- Vomiting
- Change in bowel movements (such as diarrhea, or black, tarry or bloody stools)
- Change in behavior (such as decreased or increased activity level, incoordination, seizure)

or aggression)

- Yellowing of gums, skin, or whites of the eyes (jaundice)
- Change in drinking habits (frequency, amount consumed)
- Change in urination habits (frequency, color, or smell)
- Change in skin (redness, scabs, or scratching)

It is important to stop therapy and contact your veterinarian immediately if you think your dog has a medical problem or side effect from Carprofen therapy. If you have additional questions about possible side effects, talk to your veterinarian.

### **Can Carprofen be given with other medicines?**

Carprofen should not be given with other NSAIDs (for example, aspirin, deracoxib, etodolac, firocoxib, meloxicam, tepoxalin) or steroids (for example, cortisone, dexamethasone, prednisone, triamcinolone).

Tell your veterinarian about all medicines you have given your dog in the past, and any medicines that you are planning to give with Carprofen. This should include other medicines that you can get without a prescription. Your veterinarian may want to check that all of your dog's medicines can be given together.

### **What do I do in case my dog eats more than the prescribed amount of Carprofen?**

Contact your veterinarian immediately if your dog eats more than the prescribed amount of Carprofen.

### **How to store Carprofen chewable tablets.**

Carprofen chewable tablets are designed to taste good to animals.

**Keep Carprofen chewable tablets in a secured storage area out of the reach of your dog and other pets.** If your dog ingests more than your veterinarian prescribed, or if your other pets take Carprofen chewable tablets, contact your veterinarian right away.

### **What else should I know about Carprofen?**

This sheet provides a summary of information about Carprofen. If you have any questions or concerns about Carprofen or osteoarthritis pain, or postoperative pain, talk to your veterinarian.

As with all prescribed medicines, Carprofen should only be given to the dog for which it was prescribed. It should be given to your dog only for the condition for which it was prescribed.

It is important to periodically discuss your dog's response to Carprofen at regular check ups. Your veterinarian will best determine if your dog is responding as expected and if your dog should continue receiving Carprofen.

To report suspected adverse drug events, for technical assistance or to obtain a copy of the Safety Data Sheet (SDS), contact ZyVet Animal Health Inc. at 1-877-993-8779. For additional information about adverse drug experience reporting for animal drugs, contact FDA at 1-888-FDA-VETS or <http://www.fda.gov/reportanimalae>.

Approved by FDA under ANADA # 200-739

**Manufactured by:**

Zyodus Animal Health and Investments Limited, Ahmedabad, India

**Distributed by:**

ZyVet Animal Health Inc.

Pennington, NJ 08534

Rev.: 07/23

**PRINCIPAL DISPLAY PANEL - 25 mg Tablet x 30 Count Bottle**

**Carprofen**

**25 mg**

**Chewable Tablets**

**For oral use in dogs only**

**Caution:** Federal law restricts this drug to use by or on the order of a licensed veterinarian.

Non-steroidal anti-inflammatory drug

**30 Chewable Tablets**

Approved by FDA under ANADA # 200-739

**Top Layer - First Page**

Diagram of the Top Layer - First Page. The overall dimensions are 95 mm (L) by 41 mm (H). The layout includes:

- Left Panel:** Contains 'TAKE TIME' with a clock icon and 'OBSERVE LABEL DIRECTIONS'. Below is a barcode with numbers 5186117100903 and 8. Text includes 'GUJ/DRUGS/G/25/2354', 'Please Refer to Insert for Complete Warnings and Precautions', 'Store up to 25°C (77°F), excursions permitted to 40°C (104°F)', 'Manufactured by: Zydus Animal Health and Investments Limited, Ahmedabad, India', 'Rev.: 0723', 'XXXXXX', 'Lot: [ ]', and 'Exp: [ ]'. A 'No Varnished Area (Do Not Print) (20 x 12 mm)' is indicated at the bottom left.
- Center Panel:** Features the product name 'Carprofen' in large font, '25 mg' in a purple box, 'Chewable Tablets', and 'For oral use in dogs only'. It includes a 'Caution' statement, '30 Chewable Tablets', the 'zyvet Animal Health' logo, and 'Approved by FDA under ANADA # 200-739'.
- Right Panel:** Contains a barcode, 'Each scored tablet contains 25 mg of carprofen.', a 'Warning' about children and human use, and 'For use in dogs only. Do not use in cats.' A 'Peel Here' instruction with an arrow is at the bottom right.

**Top Layer - Second Page**

Diagram of the Top Layer - Second Page. The overall dimensions are 95 mm (L) by 41 mm (H). The layout includes:

- Text Content:** 'Indications: Carprofen is indicated for the relief of pain and inflammation associated with osteoarthritis and for the control of postoperative pain associated with soft tissue and orthopedic surgeries in dogs.' 'Dosage: Always provide Client Information Sheet with prescription. Carefully consider the potential benefits and risk of Carprofen and other treatment options before deciding to use Carprofen. Use the lowest effective dose for the shortest duration consistent with individual response. The recommended dosage for oral administration to dogs is 2 mg/lb (4.4 mg/kg) of body weight daily. The total daily dose may be administered as 2 mg/lb of body weight daily or divided and administered as 1 mg/lb (2.2 mg/kg) twice daily. For the control of postoperative pain, administer approximately 2 hours before the procedure. Tablets are scored and dosage should be calculated in half-tablet increments.' 'Precaution: Due to the flavoring contained in Carprofen chewable tablets, store out of reach of dogs and in a secured area. Severe adverse reactions may be expected if large quantities of tablets are ingested. If you suspect your dog has consumed Carprofen chewable tablets beyond the labeled dose, please call your veterinarian and call 1-877-779-9838 for immediate assistance.' 'Distributed by: ZyVet Animal Health Inc. Pennington, NJ 08534'.
- Dimensions:** A 'Gumming Area 5mm' is indicated at the top right. The overall height is 41 mm (H) and width is 95 mm (L).

**Bottom Layer**

Diagram of the Bottom Layer. The overall dimensions are 95 mm (L) by 41 mm (H). The layout includes:

- Left Panel:** Contains 'TAKE TIME' with a clock icon and 'OBSERVE LABEL DIRECTIONS'. Below is a 'Gumming Area 5mm' at the top left. Text includes 'Please Refer to Insert for Complete Warnings and Precautions', 'Store up to 25°C (77°F), excursions permitted to 40°C (104°F)', 'Manufactured by: Zydus Animal Health and Investments Limited, Ahmedabad, India', 'Rev.: 0723', 'Distributed by: ZyVet Animal Health Inc. Pennington, NJ 08534'.
- Center Panel:** Features the product name 'Carprofen' in large font, '25 mg' in a purple box, 'Chewable Tablets', and 'For oral use in dogs only'. It includes a 'Caution' statement, '30 Chewable Tablets', the 'zyvet Animal Health' logo, and 'Approved by FDA under ANADA # 200-739'.
- Right Panel:** Contains 'Each scored tablet contains 25 mg of carprofen.', a 'Warning' about children and human use, and 'For use in dogs only. Do not use in cats.'

**PRINCIPAL DISPLAY PANEL - 25 mg Tablet x 60 Count Bottle**

## **Carprofen**

**25 mg**

### **Chewable Tablets**

**For oral use in dogs only**

**Caution:** Federal law restricts this drug to use by or on the order of a licensed veterinarian.

Non-steroidal anti-inflammatory drug

### **60 Chewable Tablets**

Approved by FDA under ANADA # 200-739

**Top Layer - First Page**

**Top Layer - Second Page**

**Bottom Layer**

**PRINCIPAL DISPLAY PANEL - 25 mg Tablet x 180 Count Bottle**



## **Carprofen**

**25 mg**

### **Chewable Tablets**

**For oral use in dogs only**

**Caution:** Federal law restricts this drug to use by or on the order of a licensed veterinarian.

Non-steroidal anti-inflammatory drug

### **180 Chewable Tablets**

Approved by FDA under ANADA # 200-739

Top Layer - First Page

**TAKE TIME** **OBSERVE LABEL DIRECTIONS**

**Please Refer to Insert for Complete Warnings and Precautions**

XXXXXXXXXX

Rev: 07/23

Manufactured by:  
Zydus Animal Health and Investments Limited,  
Ahmedabad, India

Lot:   
Exp:

**Carprofen**  
**25 mg**  
**Chewable Tablets**

**For oral use in dogs only**  
**Caution:** Federal law restricts this drug to use by or on the order of a licensed veterinarian.  
Non-steroidal anti-inflammatory drug

**180 Chewable Tablets**

Approved by FDA under ANADA # 200-739

Each scored tablet contains 25 mg of carprofen.  
**Warning:** Keep out of reach of children. Not for human use. Consult a physician in cases of accidental ingestion by humans. Due to the flavoring contained in Carprofen chewable tablets, keep in a secure location out of reach of dogs, cats, and other animals to prevent accidental ingestion or overdose.  
**For use in dogs only.**  
Do not use in cats.  
**Store up to 25°C (77°F), excursions permitted to 40°C (104°F).**

**Peel Here**

50.5 mm (H)

97 mm (L)

No Varnished Area (Do Not Print)  
(20 x 12 mm)

Top Layer - Second Page

**Indications:** Carprofen is indicated for the relief of pain and inflammation associated with osteoarthritis and for the control of postoperative pain associated with soft tissue and orthopedic surgeries in dogs.

**Dosage:** Always provide Client Information Sheet with prescription. Carefully consider the potential benefits and risk of Carprofen and other treatment options before deciding to use Carprofen. Use the lowest effective dose for the shortest duration consistent with individual response. The recommended dosage for oral administration to dogs is 2 mg/lb (4.4 mg/kg) of body weight daily. The total daily dose may be administered as 2 mg/lb of body weight daily or divided and administered as 1 mg/lb (2.2 mg/kg) twice daily. For the control of postoperative pain, administer approximately 2 hours before the procedure. Tablets are scored and dosage should be calculated in half-tablet increments.

**Precaution:** Due to the flavoring contained in Carprofen chewable tablets, store out of reach of dogs and in a secured area. Severe adverse reactions may be expected if large quantities of tablets are ingested. If you suspect your dog has consumed Carprofen chewable tablets beyond the labeled dose, please call your veterinarian and call 1-877-779-9838 for immediate assistance.

**Distributed by:**  
ZyVet Animal Health Inc.  
Pennington, NJ 08534

Gumming Area  
5mm

50.5 mm (H)

97 mm (L)

Bottom Layer

Gumming Area  
5mm

**TAKE TIME** **OBSERVE LABEL DIRECTIONS**

**Please Refer to Insert for Complete Warnings and Precautions**

XXXXXXXXXX

Rev: 07/23

Manufactured by:  
Zydus Animal Health and Investments Limited,  
Ahmedabad, India

Distributed by:  
ZyVet Animal Health Inc.  
Pennington, NJ 08534

**Carprofen**  
**25 mg**  
**Chewable Tablets**

**For oral use in dogs only**  
**Caution:** Federal law restricts this drug to use by or on the order of a licensed veterinarian.  
Non-steroidal anti-inflammatory drug

**180 Chewable Tablets**

Approved by FDA under ANADA # 200-739

Each scored tablet contains 25 mg of carprofen.  
**Warning:** Keep out of reach of children. Not for human use. Consult a physician in cases of accidental ingestion by humans. Due to the flavoring contained in Carprofen chewable tablets, keep in a secure location out of reach of dogs, cats, and other animals to prevent accidental ingestion or overdose.  
**For use in dogs only.**  
Do not use in cats.  
**Store up to 25°C (77°F), excursions permitted to 40°C (104°F).**

50.5 mm (H)

97 mm (L)

**PRINCIPAL DISPLAY PANEL - 75 mg Tablet x 30 Count Bottle**

## **Carprofen**

**75 mg**

### **Chewable Tablets**

**For oral use in dogs only**

**Caution:** Federal law restricts this drug to use by or on the order of a licensed veterinarian.

Non-steroidal anti-inflammatory drug

### **30 Chewable Tablets**

Approved by FDA under ANADA # 200-739

### Top Layer - First Page

TAKE TIME OBSERVE LABEL DIRECTIONS

GUJ/DRUGS/G/25/2354

Please Refer to Insert for Complete Warnings and Precautions

Store up to 25°C (77°F), excursions permitted to 40°C (104°F).

Manufactured by:  
Zydus Animal Health and Investments Limited,  
Ahmedabad, India

Rev.: 07/23 XXXXXX

Lot: \_\_\_\_\_

Exp: \_\_\_\_\_

**Carprofen**  
**75 mg**

**Chewable Tablets**  
For oral use in dogs only

**Caution:** Federal law restricts this drug to use by or on the order of a licensed veterinarian.  
Non-steroidal anti-inflammatory drug

**30 Chewable Tablets**

**zyvet**  
Animal Health

Approved by FDA under ANADA # 200-739

Each scored tablet contains 75 mg of carprofen.

**Warning:** Keep out of reach of children. Not for human use. Consult a physician in cases of accidental ingestion by humans. Due to the flavoring contained in Carprofen chewable tablets, keep in a secure location out of reach of dogs, cats, and other animals to prevent accidental ingestion or overdose.

**For use in dogs only.**  
Do not use in cats.

Peel Here

No Varnished Area (Do Not Print)  
(20 x 12 mm)

95 mm (L)

41 mm (H)

### Top Layer - Second Page

**Indications:** Carprofen is indicated for the relief of pain and inflammation associated with osteoarthritis and for the control of postoperative pain associated with soft tissue and orthopedic surgeries in dogs.

**Dosage:** Always provide Client Information Sheet with prescription. Carefully consider the potential benefits and risk of Carprofen and other treatment options before deciding to use Carprofen. Use the lowest effective dose for the shortest duration consistent with individual response. The recommended dosage for oral administration to dogs is 2 mg/lb (4.4 mg/kg) of body weight daily. The total daily dose may be administered as 2 mg/lb of body weight daily or divided and administered as 1 mg/lb (2.2 mg/kg) twice daily. For the control of postoperative pain, administer approximately 2 hours before the procedure. Tablets are scored and dosage should be calculated in half-tablet increments.

**Precaution:** Due to the flavoring contained in Carprofen chewable tablets, store out of reach of dogs and in a secured area. Severe adverse reactions may be expected if large quantities of tablets are ingested. If you suspect your dog has consumed Carprofen chewable tablets beyond the labeled dose, please call your veterinarian and call 1-877-779-9838 for immediate assistance.

**Distributed by:**  
ZyVet Animal Health Inc.  
Pennington, NJ 08534

Gumming Area  
5mm

95 mm (L)

41 mm (H)

### Bottom Layer

TAKE TIME OBSERVE LABEL DIRECTIONS

Please Refer to Insert for Complete Warnings and Precautions

Store up to 25°C (77°F), excursions permitted to 40°C (104°F).

Manufactured by:  
Zydus Animal Health and Investments Limited,  
Ahmedabad, India

Rev.: 07/23

Distributed by:  
ZyVet Animal Health Inc.  
Pennington, NJ 08534

**Carprofen**  
**75 mg**

**Chewable Tablets**  
For oral use in dogs only

**Caution:** Federal law restricts this drug to use by or on the order of a licensed veterinarian.  
Non-steroidal anti-inflammatory drug

**30 Chewable Tablets**

**zyvet**  
Animal Health

Approved by FDA under ANADA # 200-739

Each scored tablet contains 75 mg of carprofen.

**Warning:** Keep out of reach of children. Not for human use. Consult a physician in cases of accidental ingestion by humans. Due to the flavoring contained in Carprofen chewable tablets, keep in a secure location out of reach of dogs, cats, and other animals to prevent accidental ingestion or overdose.

**For use in dogs only.**  
Do not use in cats.

Gumming Area  
5mm

95 mm (L)

41 mm (H)

## PRINCIPAL DISPLAY PANEL - 75 mg Tablet x 60 Count Bottle

## **Carprofen**

**75 mg**

### **Chewable Tablets**

**For oral use in dogs only**

**Caution:** Federal law restricts this drug to use by or on the order of a licensed veterinarian.

Non-steroidal anti-inflammatory drug

### **60 Chewable Tablets**

Approved by FDA under ANADA # 200-739

Top Layer - First Page

**TAKE TIME** **OBSERVE LABEL DIRECTIONS**

**Please Refer to Insert for Complete Warnings and Precautions**

XXXXXXXXXX

Rev.: 07/23

3 86117 101005 1 8

GUJ/DRUGS/G/25/2354

**Manufactured by:**  
Zydus Animal Health and Investments Limited,  
Ahmedabad, India

Lot:

Exp:

**Carprofen**  
**75 mg**

**Chewable Tablets**

**For oral use in dogs only**

**Caution:** Federal law restricts this drug to use by or on the order of a licensed veterinarian.  
Non-steroidal anti-inflammatory drug

**60 Chewable Tablets**

**zyvet**  
Animal Health

Approved by FDA under ANADA # 200-739

Each scored tablet contains 75 mg of carprofen.

**Warning:** Keep out of reach of children. Not for human use. Consult a physician in cases of accidental ingestion by humans. Due to the flavoring contained in Carprofen chewable tablets, keep in a secure location out of reach of dogs, cats, and other animals to prevent accidental ingestion or overdose.

**For use in dogs only.**  
Do not use in cats.

**Store up to 25°C (77°F), excursions permitted to 40°C (104°F).**

Peel Here

50.5 mm (H)

97 mm (L)

No Varnished Area (Do Not Print)  
20 x 12 mm

Top Layer - Second Page

**Indications:** Carprofen is indicated for the relief of pain and inflammation associated with osteoarthritis and for the control of postoperative pain associated with soft tissue and orthopedic surgeries in dogs.

**Dosage:** Always provide Client Information Sheet with prescription. Carefully consider the potential benefits and risk of Carprofen and other treatment options before deciding to use Carprofen. Use the lowest effective dose for the shortest duration consistent with individual response. The recommended dosage for oral administration to dogs is 2 mg/lb (4.4 mg/kg) of body weight daily. The total daily dose may be administered as 2 mg/lb of body weight daily or divided and administered as 1 mg/lb (2.2 mg/kg) twice daily. For the control of postoperative pain, administer approximately 2 hours before the procedure. Tablets are scored and dosage should be calculated in half-tablet increments.

**Precaution:** Due to the flavoring contained in Carprofen chewable tablets, store out of reach of dogs and in a secured area. Severe adverse reactions may be expected if large quantities of tablets are ingested. If you suspect your dog has consumed Carprofen chewable tablets beyond the labeled dose, please call your veterinarian and call 1-877-779-9838 for immediate assistance.

**Distributed by:**  
ZyVet Animal Health Inc.  
Pennington, NJ 08534

Gumming Area  
5mm

50.5 mm (H)

97 mm (L)

Bottom Layer

Gumming Area  
5mm

**TAKE TIME** **OBSERVE LABEL DIRECTIONS**

**Please Refer to Insert for Complete Warnings and Precautions**

**Manufactured by:**  
Zydus Animal Health and Investments Limited,  
Ahmedabad, India

**Distributed by:**  
ZyVet Animal Health Inc.  
Pennington, NJ 08534

Rev.: 07/23

**Carprofen**  
**75 mg**

**Chewable Tablets**

**For oral use in dogs only**

**Caution:** Federal law restricts this drug to use by or on the order of a licensed veterinarian.  
Non-steroidal anti-inflammatory drug

**60 Chewable Tablets**

**zyvet**  
Animal Health

Approved by FDA under ANADA # 200-739

Each scored tablet contains 75 mg of carprofen.

**Warning:** Keep out of reach of children. Not for human use. Consult a physician in cases of accidental ingestion by humans. Due to the flavoring contained in Carprofen chewable tablets, keep in a secure location out of reach of dogs, cats, and other animals to prevent accidental ingestion or overdose.

**For use in dogs only.**  
Do not use in cats.

**Store up to 25°C (77°F), excursions permitted to 40°C (104°F).**

50.5 mm (H)

97 mm (L)

PRINCIPAL DISPLAY PANEL - 75 mg Tablet x 180 Count Bottle

## **Carprofen**

**75 mg**

### **Chewable Tablets**

**For oral use in dogs only**

**Caution:** Federal law restricts this drug to use by or on the order of a licensed veterinarian.

Non-steroidal anti-inflammatory drug

**180 Chewable Tablets**

Approved by FDA under ANADA # 200-739

Top Layer - First Page

Diagram of the Top Layer - First Page. The page is 118 mm wide and 60 mm high. It features a central product name 'Carprofen' in a large font, with '75 mg' below it. To the left, there is a 'TAKE TIME' icon and 'OBSERVE LABEL DIRECTIONS' text. Below this is a barcode with the number '3 85117 101009 6'. Further down, it says 'Please Refer to Insert for Complete Warnings and Precautions'. The manufacturer information is 'GUJ/DRUGS/G/25/2354' and 'Manufactured by: Zydus Animal Health and Investments Limited, Ahmedabad, India'. There is a 'Lot:' and 'Exp:' field with a dashed box. The product name 'Carprofen' is repeated in a large font, followed by '75 mg' in a pink box, 'Chewable Tablets', and 'For oral use in dogs only'. A 'Caution' statement follows: 'Federal law restricts this drug to use by or on the order of a licensed veterinarian. Non-steroidal anti-inflammatory drug'. Below this is '180 Chewable Tablets' and the 'zyvet Animal Health' logo. It is 'Approved by FDA under ANADA # 200-739'. On the right, it states 'Each scored tablet contains 75 mg of carprofen.' followed by a 'Warning' and 'For use in dogs only' instructions. Storage instructions are 'Store up to 25°C (77°F), excursions permitted to 40°C (104°F)'. A 'Peel Here' icon is at the bottom right. A 'No Varnished Area (Do Not Print) (20 x 12 mm)' is indicated at the bottom left. A 'Gumming Area 5mm' is indicated at the top right.

Top Layer - Second Page

Diagram of the Top Layer - Second Page. The page is 118 mm wide and 60 mm high. It contains detailed text for 'Indications', 'Dosage', and 'Precaution'. The 'Indications' section states: 'Carprofen is indicated for the relief of pain and inflammation associated with osteoarthritis and for the control of postoperative pain associated with soft tissue and orthopedic surgeries in dogs.' The 'Dosage' section states: 'Always provide Client Information Sheet with prescription. Carefully consider the potential benefits and risk of Carprofen and other treatment options before deciding to use Carprofen. Use the lowest effective dose for the shortest duration consistent with individual response. The recommended dosage for oral administration to dogs is 2 mg/lb (4.4 mg/kg) of body weight daily. The total daily dose may be administered as 2 mg/lb of body weight daily or divided and administered as 1 mg/lb (2.2 mg/kg) twice daily. For the control of postoperative pain, administer approximately 2 hours before the procedure. Tablets are scored and dosage should be calculated in half-tablet increments.' The 'Precaution' section states: 'Due to the flavoring contained in Carprofen chewable tablets, store out of reach of dogs and in a secured area. Severe adverse reactions may be expected if large quantities of tablets are ingested. If you suspect your dog has consumed Carprofen chewable tablets beyond the labeled dose, please call your veterinarian and call 1-877-779-9838 for immediate assistance.' The 'Distributed by:' section lists 'ZyVet Animal Health Inc. Pennington, NJ 08534'. A 'Gumming Area 5mm' is indicated at the top right.

Bottom Layer

Diagram of the Bottom Layer. The page is 118 mm wide and 60 mm high. It features a 'TAKE TIME' icon and 'OBSERVE LABEL DIRECTIONS' text. Below this is a 'Please Refer to Insert for Complete Warnings and Precautions' notice. The manufacturer information is 'Manufactured by: Zydus Animal Health and Investments Limited, Ahmedabad, India'. The distributor information is 'Distributed by: ZyVet Animal Health Inc. Pennington, NJ 08534'. The product name 'Carprofen' is repeated in a large font, followed by '75 mg' in a pink box, 'Chewable Tablets', and 'For oral use in dogs only'. A 'Caution' statement follows: 'Federal law restricts this drug to use by or on the order of a licensed veterinarian. Non-steroidal anti-inflammatory drug'. Below this is '180 Chewable Tablets' and the 'zyvet Animal Health' logo. It is 'Approved by FDA under ANADA # 200-739'. On the right, it states 'Each scored tablet contains 75 mg of carprofen.' followed by a 'Warning' and 'For use in dogs only' instructions. Storage instructions are 'Store up to 25°C (77°F), excursions permitted to 40°C (104°F)'. A 'Gumming Area 5mm' is indicated at the top left.

PRINCIPAL DISPLAY PANEL - 100 mg Tablet x 30 Count Bottle



## **Carprofen**

**100 mg**

### **Chewable Tablets**

**For oral use in dogs only**

**Caution:** Federal law restricts this drug to use by or on the order of a licensed veterinarian.

Non-steroidal anti-inflammatory drug

### **30 Chewable Tablets**

Approved by FDA under ANADA # 200-739

Top Layer - First Page

**TAKE TIME** **OBSERVE LABEL DIRECTIONS**

**Please Refer to Insert for Complete Warnings and Precautions**

XXXXXXXXXXXX

Rev: 07/23

GUJ/DRUGS/G/25/2354

Manufactured by:  
Zydus Animal Health and Investments Limited,  
Ahmedabad, India

Lot:

Exp:

**Carprofen**  
**100 mg**  
**Chewable Tablets**

**For oral use in dogs only**

**Caution:** Federal law restricts this drug to use by or on the order of a licensed veterinarian.  
Non-steroidal anti-inflammatory drug

**30 Chewable Tablets**

**zyvet**  
Animal Health

Approved by FDA under ANADA # 200-739

Each scored tablet contains 100 mg of carprofen.

**Warning:** keep out of reach of children. Not for human use. Consult a physician in cases of accidental ingestion by humans. Due to the flavoring contained in Carprofen chewable tablets, keep in a secure location out of reach of dogs, cats, and other animals to prevent accidental ingestion or overdose.

**For use in dogs only.**  
Do not use in cats.

**Store up to 25°C (77°F), excursions permitted to 40°C (104°F).**

**Peel Here**

50.5 mm (H)

97 mm (L)

No Varnished Area (Do Not Print)  
(20 x 12 mm)

Top Layer - Second Page

**Indications:** Carprofen is indicated for the relief of pain and inflammation associated with osteoarthritis and for the control of postoperative pain associated with soft tissue and orthopedic surgeries in dogs.

**Dosage:** Always provide Client Information Sheet with prescription. Carefully consider the potential benefits and risk of Carprofen and other treatment options before deciding to use Carprofen. Use the lowest effective dose for the shortest duration consistent with individual response. The recommended dosage for oral administration to dogs is 2 mg/lb (4.4 mg/kg) of body weight daily. The total daily dose may be administered as 2 mg/lb of body weight daily or divided and administered as 1 mg/lb (2.2 mg/kg) twice daily. For the control of postoperative pain, administer approximately 2 hours before the procedure. Tablets are scored and dosage should be calculated in half-tablet increments.

**Precaution:** Due to the flavoring contained in Carprofen chewable tablets, store out of reach of dogs and in a secured area. Severe adverse reactions may be expected if large quantities of tablets are ingested. If you suspect your dog has consumed Carprofen chewable tablets beyond the labeled dose, please call your veterinarian and call 1-877-779-9838 for immediate assistance.

**Distributed by:**  
ZyVet Animal Health Inc.  
Pennington, NJ 08534

Gumming Area  
5mm

50.5 mm (H)

97 mm (L)

Bottom Layer

Gumming Area  
5mm

**TAKE TIME** **OBSERVE LABEL DIRECTIONS**

**Please Refer to Insert for Complete Warnings and Precautions**

Rev: 07/23

Manufactured by:  
Zydus Animal Health and Investments Limited,  
Ahmedabad, India

Distributed by:  
ZyVet Animal Health Inc.  
Pennington, NJ 08534

**Carprofen**  
**100 mg**  
**Chewable Tablets**

**For oral use in dogs only**

**Caution:** Federal law restricts this drug to use by or on the order of a licensed veterinarian.  
Non-steroidal anti-inflammatory drug

**30 Chewable Tablets**

**zyvet**  
Animal Health

Approved by FDA under ANADA # 200-739

Each scored tablet contains 100 mg of carprofen.

**Warning:** keep out of reach of children. Not for human use. Consult a physician in cases of accidental ingestion by humans. Due to the flavoring contained in Carprofen chewable tablets, keep in a secure location out of reach of dogs, cats, and other animals to prevent accidental ingestion or overdose.

**For use in dogs only.**  
Do not use in cats.

**Store up to 25°C (77°F), excursions permitted to 40°C (104°F).**

50.5 mm (H)

97 mm (L)

**PRINCIPAL DISPLAY PANEL - 100 mg Tablet x 60 Count Bottle**

## **Carprofen**

**100 mg**

**Chewable Tablets**

**For oral use in dogs only**

**Caution:** Federal law restricts this drug to use by or on the order of a licensed veterinarian.

Non-steroidal anti-inflammatory drug

**60 Chewable Tablets**

Approved by FDA under ANADA # 200-739

Top Layer - First Page

TAKE TIME OBSERVE LABEL DIRECTIONS

Please Refer to Insert for Complete Warnings and Precautions

XXXXXXXXXXXX

Rev: 07/23

GUJ/DRUGS/G/25/2354

Manufactured by:  
Zydus Animal Health and Investments Limited,  
Ahmedabad, India

Lot:

Exp:

**Carprofen**  
**100 mg**

**Chewable Tablets**

**For oral use in dogs only**

**Caution:** Federal law restricts this drug to use by or on the order of a licensed veterinarian.  
Non-steroidal anti-inflammatory drug

**60 Chewable Tablets**

**zyvet**  
Animal Health

Approved by FDA under ANADA # 200-739

Each scored tablet contains 100 mg of carprofen.

**Warning:** Keep out of reach of children. Not for human use. Consult a physician in cases of accidental ingestion by humans. Due to the flavoring contained in Carprofen chewable tablets, keep in a secure location out of reach of dogs, cats, and other animals to prevent accidental ingestion or overdose.

**For use in dogs only.**  
Do not use in cats.

**Store up to 25°C (77°F), excursions permitted to 40°C (104°F).**

Peel Here

No Varnished Area (Do Not Print)  
(20 x 12 mm)

97 mm (L)

50.5 mm (H)

Gumming Area  
5mm

Top Layer - Second Page

**Indications:** Carprofen is indicated for the relief of pain and inflammation associated with osteoarthritis and for the control of postoperative pain associated with soft tissue and orthopedic surgeries in dogs.

**Dosage:** Always provide Client Information Sheet with prescription. Carefully consider the potential benefits and risk of Carprofen and other treatment options before deciding to use Carprofen. Use the lowest effective dose for the shortest duration consistent with individual response. The recommended dosage for oral administration to dogs is 2 mg/lb (4.4 mg/kg) of body weight daily. The total daily dose may be administered as 2 mg/lb of body weight daily or divided and administered as 1 mg/lb (2.2 mg/kg) twice daily. For the control of postoperative pain, administer approximately 2 hours before the procedure. Tablets are scored and dosage should be calculated in half-tablet increments.

**Precaution:** Due to the flavoring contained in Carprofen chewable tablets, store out of reach of dogs and in a secured area. Severe adverse reactions may be expected if large quantities of tablets are ingested. If you suspect your dog has consumed Carprofen chewable tablets beyond the labeled dose, please call your veterinarian and call 1-877-779-9838 for immediate assistance.

**Distributed by:**  
ZyVet Animal Health Inc.  
Pennington, NJ 08534

97 mm (L)

50.5 mm (H)

Gumming Area  
5mm

Bottom Layer

TAKE TIME OBSERVE LABEL DIRECTIONS

Please Refer to Insert for Complete Warnings and Precautions

XXXXXXXXXXXX

Rev: 07/23

GUJ/DRUGS/G/25/2354

Manufactured by:  
Zydus Animal Health and Investments Limited,  
Ahmedabad, India

Distributed by:  
ZyVet Animal Health Inc.  
Pennington, NJ 08534

**Carprofen**  
**100 mg**

**Chewable Tablets**

**For oral use in dogs only**

**Caution:** Federal law restricts this drug to use by or on the order of a licensed veterinarian.  
Non-steroidal anti-inflammatory drug

**60 Chewable Tablets**

**zyvet**  
Animal Health

Approved by FDA under ANADA # 200-739

Each scored tablet contains 100 mg of carprofen.

**Warning:** Keep out of reach of children. Not for human use. Consult a physician in cases of accidental ingestion by humans. Due to the flavoring contained in Carprofen chewable tablets, keep in a secure location out of reach of dogs, cats, and other animals to prevent accidental ingestion or overdose.

**For use in dogs only.**  
Do not use in cats.

**Store up to 25°C (77°F), excursions permitted to 40°C (104°F).**

Peel Here

No Varnished Area (Do Not Print)  
(20 x 12 mm)

97 mm (L)

50.5 mm (H)

Gumming Area  
5mm

PRINCIPAL DISPLAY PANEL - 100 mg Tablet x 180 Count Bottle

## **Carprofen**

**100 mg**

**Chewable Tablets**

**For oral use in dogs only**

**Caution:** Federal law restricts this drug to use by or on the order of a licensed veterinarian.

Non-steroidal anti-inflammatory drug

**180 Chewable Tablets**

Approved by FDA under ANADA # 200-739

Top Layer - First Page

TAKE TIME OBSERVE LABEL DIRECTIONS

**Please Refer to Insert for Complete Warnings and Precautions**

GUJDRUGS/G/25/2354

**Manufactured by:**  
Zydus Animal Health and Investments Limited,  
Ahmedabad, India

Lot:   
Exp:   
No Varnished Area (Do Not Print) (30 x 15 mm)

XXXXXXXX  
Rev: 07/23

# Carprofen

## 100 mg

### Chewable Tablets

**For oral use in dogs only**  
**Caution:** Federal law restricts this drug to use by or on the order of a licensed veterinarian.  
Non-steroidal anti-inflammatory drug

**180 Chewable Tablets**

Approved by FDA under ANADA # 200-739

Each scored tablet contains 100 mg of carprofen.  
**Warning:** Keep out of reach of children. Not for human use. Consult a physician in cases of accidental ingestion by humans. Due to the flavoring contained in Carprofen chewable tablets, keep in a secure location out of reach of dogs, cats, and other animals to prevent accidental ingestion or overdose.  
**For use in dogs only.**  
Do not use in cats.  
**Store up to 25°C (77°F), excursions permitted to 40°C (104°F).**

Peel Here

136 mm (L) 75 mm (H)

Top Layer - Second Page

**Indications:** Carprofen is indicated for the relief of pain and inflammation associated with osteoarthritis and for the control of postoperative pain associated with soft tissue and orthopedic surgeries in dogs.

**Dosage:** Always provide Client Information Sheet with prescription. Carefully consider the potential benefits and risk of Carprofen and other treatment options before deciding to use Carprofen. Use the lowest effective dose for the shortest duration consistent with individual response. The recommended dosage for oral administration to dogs is 2 mg/lb (4.4 mg/kg) of body weight daily. The total daily dose may be administered as 2 mg/lb of body weight daily or divided and administered as 1 mg/lb (2.2 mg/kg) twice daily. For the control of postoperative pain, administer approximately 2 hours before the procedure. Tablets are scored and dosage should be calculated in half-tablet increments.

**Precaution:** Due to the flavoring contained in Carprofen chewable tablets, store out of reach of dogs and in a secured area. Severe adverse reactions may be expected if large quantities of tablets are ingested. If you suspect your dog has consumed Carprofen chewable tablets beyond the labeled dose, please call your veterinarian and call 1-877-779-9638 for immediate assistance.

**Distributed by:**  
ZyVet Animal Health Inc.  
Pennington, NJ 08534

Gumming Area 5mm

136 mm (L) 75 mm (H)

Bottom Layer

TAKE TIME OBSERVE LABEL DIRECTIONS

**Please Refer to Insert for Complete Warnings and Precautions**

**Manufactured by:**  
Zydus Animal Health and Investments Limited,  
Ahmedabad, India

**Distributed by:**  
ZyVet Animal Health Inc.  
Pennington, NJ 08534

XXXXXXXX  
Rev: 07/23

# Carprofen

## 100 mg

### Chewable Tablets

**For oral use in dogs only**  
**Caution:** Federal law restricts this drug to use by or on the order of a licensed veterinarian.  
Non-steroidal anti-inflammatory drug

**180 Chewable Tablets**

Approved by FDA under ANADA # 200-739

Each scored tablet contains 100 mg of carprofen.  
**Warning:** Keep out of reach of children. Not for human use. Consult a physician in cases of accidental ingestion by humans. Due to the flavoring contained in Carprofen chewable tablets, keep in a secure location out of reach of dogs, cats, and other animals to prevent accidental ingestion or overdose.  
**For use in dogs only.**  
Do not use in cats.  
**Store up to 25°C (77°F), excursions permitted to 40°C (104°F).**

Gumming Area 5mm

136 mm (L) 75 mm (H)

carprofen tablet, chewable

### Product Information

<b>Product Type</b>	PRESCRIPTION ANIMAL DRUG	<b>Item Code (Source)</b>	NDC:86117-009
<b>Route of Administration</b>	ORAL		

### Active Ingredient/Active Moiety

<b>Ingredient Name</b>	<b>Basis of Strength</b>	<b>Strength</b>
CARPROFEN (UNII: FFL0D546HO) (CARPROFEN - UNII:FFL0D546HO)	CARPROFEN	25 mg

### Product Characteristics

<b>Color</b>	BROWN	<b>Score</b>	2 pieces
<b>Shape</b>	SQUARE	<b>Size</b>	11mm
<b>Flavor</b>	LIVER (Pig)	<b>Imprint Code</b>	11;U
<b>Contains</b>			

### Packaging

#	<b>Item Code</b>	<b>Package Description</b>	<b>Marketing Start Date</b>	<b>Marketing End Date</b>
1	NDC:86117-009-03	30 in 1 BOTTLE		
2	NDC:86117-009-05	60 in 1 BOTTLE		
3	NDC:86117-009-09	180 in 1 BOTTLE		

### Marketing Information

<b>Marketing Category</b>	<b>Application Number or Monograph Citation</b>	<b>Marketing Start Date</b>	<b>Marketing End Date</b>
ANADA	ANADA200739	02/01/2024	

## CARPROFEN

carprofen tablet, chewable

### Product Information

<b>Product Type</b>	PRESCRIPTION ANIMAL DRUG	<b>Item Code (Source)</b>	NDC:86117-010
<b>Route of Administration</b>	ORAL		

### Active Ingredient/Active Moiety

<b>Ingredient Name</b>	<b>Basis of Strength</b>	<b>Strength</b>
CARPROFEN (UNII: FFL0D546HO) (CARPROFEN - UNII:FFL0D546HO)	CARPROFEN	75 mg

## Product Characteristics

Color	BROWN	Score	2 pieces
Shape	SQUARE	Size	15mm
Flavor	LIVER (Pig)	Imprint Code	12;U
Contains			

## Packaging

#	Item Code	Package Description	Marketing Start Date	Marketing End Date
1	NDC:86117-010-03	30 in 1 BOTTLE		
2	NDC:86117-010-05	60 in 1 BOTTLE		
3	NDC:86117-010-09	180 in 1 BOTTLE		

## Marketing Information

Marketing Category	Application Number or Monograph Citation	Marketing Start Date	Marketing End Date
ANADA	ANADA200739	02/01/2024	

## CARPROFEN

carprofen tablet, chewable

### Product Information

Product Type	PRESCRIPTION ANIMAL DRUG	Item Code (Source)	NDC:86117-011
Route of Administration	ORAL		

### Active Ingredient/Active Moiety

Ingredient Name	Basis of Strength	Strength
CARPROFEN (UNII: FFL0D546HO) (CARPROFEN - UNII:FFL0D546HO)	CARPROFEN	100 mg

## Product Characteristics

Color	BROWN	Score	2 pieces
Shape	SQUARE	Size	17mm
Flavor	LIVER (Pig)	Imprint Code	13;U
Contains			

## Packaging

#	Item Code	Package Description	Marketing Start Date	Marketing End Date
1	NDC:86117-011-03	30 in 1 BOTTLE		
2	NDC:86117-011-05	60 in 1 BOTTLE		
3	NDC:86117-011-09	180 in 1 BOTTLE		



## Marketing Information

Marketing Category	Application Number or Monograph Citation	Marketing Start Date	Marketing End Date
ANADA	ANADA200739	02/01/2024	

**Labeler** - ZYVET ANIMAL HEALTH INC. (117047560)

**Registrant** - ZYVET ANIMAL HEALTH INC. (117047560)

Revised: 4/2024

ZYVET ANIMAL HEALTH INC.