

EQUATE BISMUTH STOMACH RELIEF CHEW- bismuth subsalicylate tablet, chewable
Walmart

Bismuth subsalicylate 262 mg

Active ingredient (in each chewable tablet)

Bismuth subsalicylate 262 mg

Purpose

Upset stomach reliever and antidiarrheal

Uses relieves

- Traveler's diarrhea
- Diarrhea
- Upset stomach due to overindulgence in food and drink, including:
- Heartburn
- Indigestion
- Nausea
- Gas
- Belching
- Fullness

Warnings

Reye's syndrome: Children and teenagers who have or are recovering from chicken pox or flu-like symptoms should not use this product. When using this product, if changes in behavior with nausea and vomiting occur, consult a doctor because these symptoms could be an early sign of Reye's syndrome, a rare but serious illness.

Allergy alert: Contains salicylate. Do not take if you are

- Allergic to salicylates (including aspirin)
- taking other salicylate products

Do not use if you have

- An ulcer
- A bleeding problem
- Bloody or black stool

Ask a doctor before use if you have

- Fever
- Mucus in the stool

Ask a doctor or pharmacist before use if you are taking any drug for

- Anticoagulation (thinning the blood)
- Diabetes
- Gout
- Arthritis

When using this product a temporary, but harmless, darkening of the stool and/or

tongue may occur

Stop use and ask a doctor if

- Symptoms get worse or last more than 2 days
- Ringing in the ears or loss of hearing occurs
- Diarrhea lasts more than 2 days

If pregnant or breast-feeding, ask a health professional before use.

Keep out of reach of children.

In case of overdose, get medical help or contact a Poison Control Center right away.

Directions

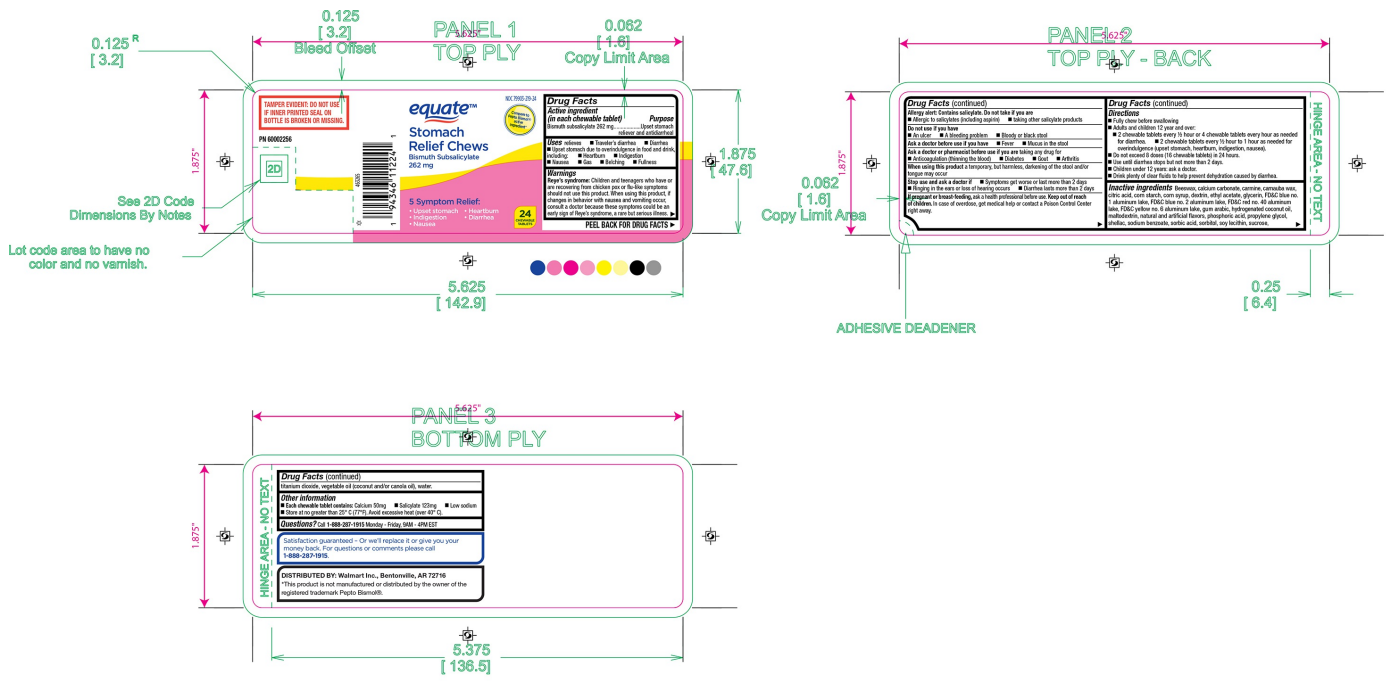
- Fully chew before swallowing
- Adults and children 12 years and over:
 - 2 chewable tablets every 1/2 hour or 4 chewable tablets every hour as needed for diarrhea.
 - 2 chewable tablets every 1/2 hour to 1 hour as needed for overindulgence (upset stomach, heartburn, indigestion, nausea).
- Do not exceed 8 doses (16 chewable tablets) in 24 hours
- Use until diarrhea stops but not more than 2 days
- Children under 12 years: ask a doctor
- Drink plenty of clear fluids to help prevent dehydration caused by diarrhea.

Inactive ingredients: Beeswax, calcium carbonate, carmine, carnauba wax, citric acid, corn starch, corn syrup, dextrin, ethyl acetate, glycerin, FD&C red no. 40 aluminum lake, FD&C yellow no. 6 aluminum lake, gum arabic, hydrogenated coconut oil, maltodextrin, natural and artificial flavors, phosphoric acid, propylene glycol, shellac, sodium benzoate, sorbic acid, sorbitol, soy lecithin, sucrose, titanium dioxide, vegetable oil (coconut and/or canola oil), water.

Other information

- **Each chewable tablet contains:** Calcium 50mg
- Salicylate 123mg
- Low sodium
- Store at no greater than 25°C (77°F). Avoid excessive heat (over 40°C).

Questions? Call **1-888-287-1915** Monday - Friday, 9AM to 4PM EST



EQUATE BISMUTH STOMACH RELIEF CHEW

bismuth subsalicylate tablet, chewable

Product Information

Product Type	HUMAN OTC DRUG	Item Code (Source)	NDC:79903-219
Route of Administration	ORAL		

Active Ingredient/Active Moiety

Ingredient Name	Basis of Strength	Strength
BISMUTH SUBSALICYLATE (UNII: 62TEY51RR1) (BISMUTH CATION - UNII:ZS9CD18YE)	BISMUTH SUBSALICYLATE	262 mg

Inactive Ingredients

Ingredient Name	Strength
WATER (UNII: 059QF0KO0R)	

Product Characteristics

Color	pink	Score	no score
Shape	ROUND	Size	14mm
Flavor	WMTERGREEN	Imprint Code	SR
Contains			

Packaging

#	Item Code	Package Description	Marketing Start Date	Marketing End Date

1	NDC:79903-219-24	24 in 1 BOTTLE; Type 0: Not a Combination Product	11/07/2023	
---	------------------	---	------------	--



Marketing Information

Marketing Category	Application Number or Monograph Citation	Marketing Start Date	Marketing End Date
OTC Monograph Drug	M008	11/07/2023	

Labeler - Walmart (051957769)

Registrant - Bestco (002149136)

Establishment

Name	Address	ID/FEI	Business Operations
Bestco		002149136	manufacture(79903-219)

Revised: 11/2023

Walmart