

EQUATE GENTLE LAXATIVE SOFT CHEW- magnesium hydroxide tablet, chewable
Walmart

Magnesium Hydroxide USP 1200 mg

Active ingredient (in each chew)

Magnesium hydroxide USP 1200 mg

Purpose

Saline laxative

Uses

- for relief of occasional constipation (irregularity)
- this product generally produces bowel movement in 1/2 to 6 hours

Warnings

Ask a doctor or pharmacist before use if you have

- kidney disease
- a magnesium-restricted diet
- stomach pain, nausea or vomiting
- noticed a sudden change in bowel habits that last over 2 weeks
- Do not give to children under 5 years of age unless directed by a doctor

Stop use and ask doctor if

- you have rectal bleeding or fail to have a bowel movement after using this product. These could be signs of a serious condition.
- you need to use a laxative more than 1 week

Ask a doctor or pharmacist before use if you are taking a prescription drug. This product may interact with certain prescription drugs.

If you are pregnant or breast-feeding, ask a health professional before use.

Keep out of reach of children

In case of overdose, get medical help or contact a Poison Control Center right away.

Directions

- drink a full glass (8 oz) of liquid with each dose
- dose may be taken as a single daily dose or in divided doses
- do not exceed the maximum recommended daily dose in a 24 hour period

adults and children 12 years of age and over - 2 to 4 chews

children 6 to 12 years of age - 1 to 2 chews

children under 6 years of age - ask a doctor

Other information

- **Each chew contains:** magnesium 500 mg
- Contains soy

- 15 calories per chew
- Store between 20° to 25°C (68° to 77°F) in a dry place
- Do not use if bag is torn or open

Inactive ingredients: Confectioner's sugar, corn syrup, corn syrup solids, FD&C red no. 40 aluminum lake, glycerine, gum arabic, hydrogenated coconut oil, maltodextrin, natural flavors, propylene glycol, soy lecithin, sucrose, water.

Questions? Or to report an adverse event call **1-888-287-1915**, Monday - Friday, 9AM - 4PM EST

	<p>Do not use if bag is torn or open</p>	
	<p>◀ TEAR HERE — — — — — TEAR HERE ▶</p> <p>RECLOSABLE BAG</p>	
	<div style="text-align: center;">  <p>NDC 79903-220-30</p>  <p>STIMULANT FREE</p> <h1>Gentle Laxative Soft Chews</h1> <p>1200 mg Magnesium Hydroxide/ Saline Laxative</p> </div> <div style="display: flex; justify-content: space-between; align-items: flex-end; padding: 20px;"> <ul style="list-style-type: none"> • Works naturally with your body • Relief in as little as 30 minutes  </div>	

Gluten-Free



30
SOFT
CHEWS

Mixed Berry
Flavor



DISTRIBUTED BY: Walmart Inc.,
Bentonville, AR 72716
*This product is not a manufacturer or
distributor of Sanofi-Aventis
Deutschland GmbH, owner of the
registered trademark Du da x@.

Satisfaction guaranteed - Or we'll
replace it or give you your money back.
For questions or comments or to report
an undesired reaction or side effect,
please call 1-888-287-1915.

P-N-60002258

Ask a doctor or pharmacist before use if you are taking a prescription drug. This product may interact with certain prescription drugs.

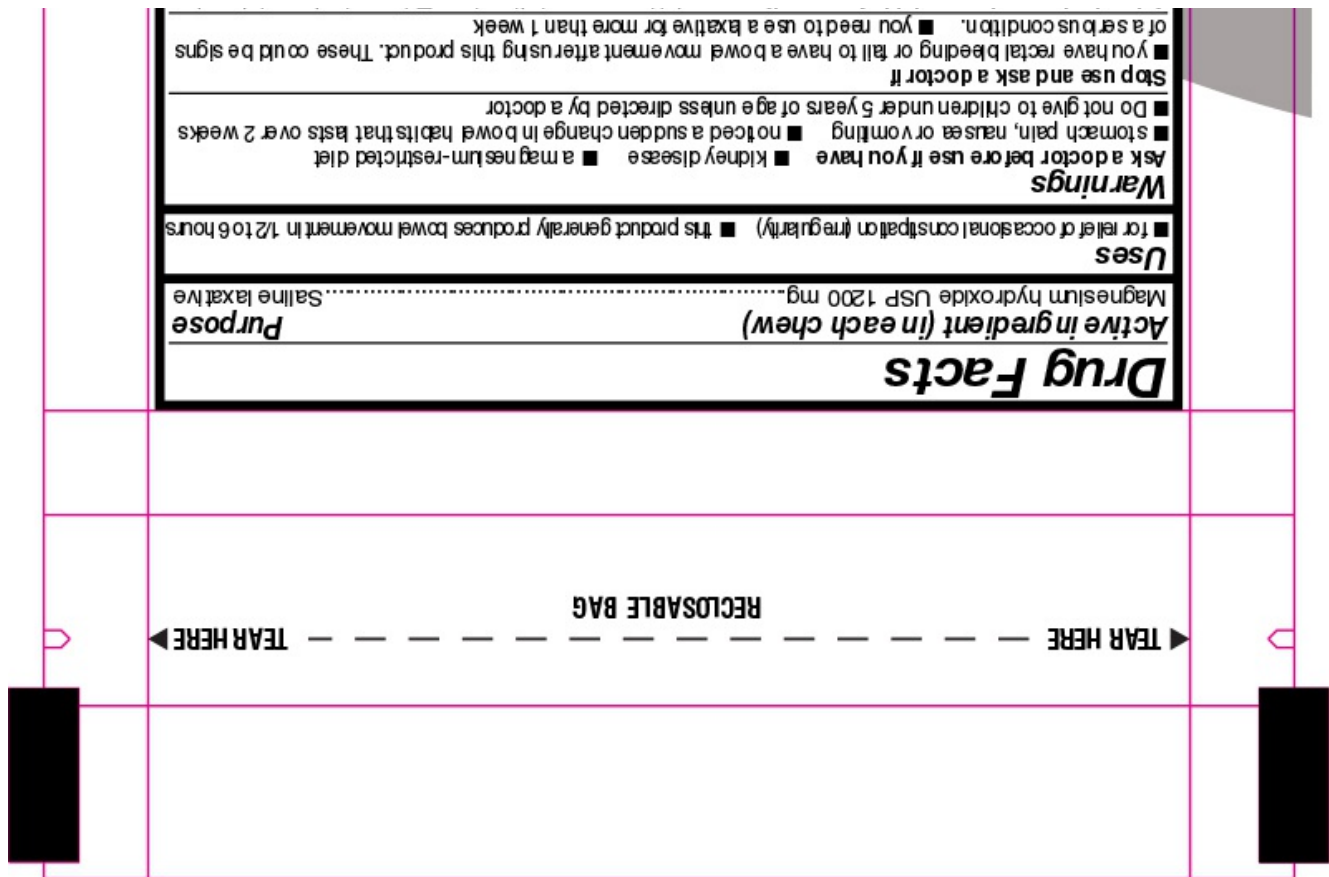
If you are pregnant or breastfeeding, ask a health professional before use.

Directions
 ■ drink a full glass (8 oz) of liquid with each dose ■ dose may be taken as a single daily dose or in divided doses ■ do not exceed the maximum recommended daily dose in a 24 hour period
 adults and children 12 years of age and over 2 to 4 chews
 children 6 to 12 years of age 1 to 2 chews
 children under 6 years of age ask a doctor

Other information
 ■ Each chew contains: magnesium 500 mg ■ Contains soy ■ Calories 15 per chew
 ■ Store between 20° to 25°C (68° to 77°F) in a dry place ■ Do not use if bag is torn or open

Inactive ingredients Confectioner's sugar, corn syrup, corn syrup solids, FD&C red no. 40 aluminum lake, glycerine, gum arabic, hydrogenerated coconut oil, maltodextrin, natural flavors, propylene glycol, soy lecithin, sucrose, water.

Questions? Or to report an adverse event call 1-888-287-1915, Monday - Friday, 9AM - 4PM EST



EQUATE GENTLE LAXATIVE SOFT CHEW

magnesium hydroxide tablet, chewable

Product Information

Product Type	HUMAN OTC DRUG	Item Code (Source)	NDC:79903-220
Route of Administration	ORAL		

Active Ingredient/Active Moiety

Ingredient Name	Basis of Strength	Strength
MAGNESIUM HYDROXIDE (UNII: NBZ3QY004S) (MAGNESIUM CATION - UNII:T6V3LHY838)	MAGNESIUM HYDROXIDE	1200 mg

Inactive Ingredients

Ingredient Name	Strength
WATER (UNII: 059QF0KO0R)	

Product Characteristics

Color	red	Score	no score
Shape	RECTANGLE	Size	22mm

Flavor	BERRY	Imprint Code	
Contains			

Packaging

#	Item Code	Package Description	Marketing Start Date	Marketing End Date
1	NDC:79903-220-30	30 in 1 BAG; Type 0: Not a Combination Product	11/07/2023	



Marketing Information

Marketing Category	Application Number or Monograph Citation	Marketing Start Date	Marketing End Date
OTC Monograph Drug	M007	11/07/2023	

Labeler - Walmart (051957769)

Registrant - Bestco (002149136)

Establishment

Name	Address	ID/FEI	Business Operations
Bestco		002149136	manufacture(79903-220)

Revised: 11/2023

Walmart