

IMIPENEM AND CILASTATIN- imipenem and cilastatin sodium injection, powder, for solution
IMIPENEM AND CILASTATIN - imipenem and cilastatin sodium injection, powder, for solution
Fresenius Kabi USA, LLC

HIGHLIGHTS OF PRESCRIBING INFORMATION

These highlights do not include all the information needed to use Imipenem and Cilastatin for Injection, USP (I.V.) safely and effectively. See full prescribing information for Imipenem and Cilastatin for Injection, USP (I.V.).

IMIPENEM AND CILASTATIN FOR INJECTION, USP, for intravenous use

Initial U.S. Approval: 1985

----- **RECENT MAJOR CHANGES** -----

Dosage and Administration (2.5)

08/2018

----- **INDICATIONS AND USAGE** -----

Imipenem and Cilastatin for Injection, USP for intravenous use is a combination of imipenem, a penem antibacterial, and cilastatin, a renal dehydropeptidase inhibitor, indicated for the treatment of the following serious infections caused by designated susceptible bacteria:

- Lower respiratory tract infections. (1.1)
- Urinary tract infections. (1.2)
- Intra-abdominal infections. (1.3)
- Gynecologic infections. (1.4)
- Bacterial septicemia. (1.5)
- Bone and joint infections. (1.6)
- Skin and skin structure infections. (1.7)
- Endocarditis. (1.8)

Limitations of Use:

- Imipenem and Cilastatin for Injection, USP (I.V.) is not indicated in patients with meningitis because safety and efficacy have not been established (1.9).
- Imipenem and Cilastatin for Injection, USP (I.V.) is not recommended in pediatric patients with CNS infections because of the risk of seizures (1.9).
- Imipenem and Cilastatin for Injection, USP (I.V.) is not recommended in pediatric patients weighing less than 30 kg with impaired renal function (1.9).

Usage:

To reduce the development of drug resistant bacteria and maintain the effectiveness of Imipenem and Cilastatin for Injection, USP (I.V.) and other antibacterial drugs, Imipenem and Cilastatin for Injection, USP (I.V.) should be used only to treat infections that are proven or strongly suspected to be caused by bacteria (1.10).

----- **DOSAGE AND ADMINISTRATION** -----

- The dosage of Imipenem and Cilastatin for Injection (I.V.) in adult patients should be based on suspected or confirmed pathogen susceptibility (2.1).
- For adult patients with normal renal function (creatinine clearance of greater than or equal to 90 mL/min), the recommended dosage regimens are: 500 mg every 6 hours OR 1,000 mg every 8 hours OR 1,000 mg every 6 hours (2.1).
- See full prescribing information for dosage recommendations in pediatric patients (2.2).
- A reduction in dose must be made for a patient with a creatinine clearance of less than 90 mL/min (2.3).
- Patients with creatinine clearances of less than 15 mL/min should not receive Imipenem and Cilastatin for Injection (I.V.) unless hemodialysis is instituted within 48 hours (2.4).
- Reconstitute Imipenem and Cilastatin for Injection, USP (I.V.) vial with appropriate diluent and dilute the reconstituted suspension with an appropriate infusion solution before administering by intravenous infusion (2.5).

----- **DOSAGE FORMS AND STRENGTHS** -----

For Injection: Imipenem and Cilastatin for Injection (I.V.) is a sterile powder mixture for reconstitution in single-dose vials containing:

- 250 mg imipenem (anhydrous equivalent) and 250 mg cilastatin sodium (3)
- 500 mg imipenem (anhydrous equivalent) and 500 mg cilastatin sodium (3)

----- CONTRAINDICATIONS -----

- Known hypersensitivity to any component of Imipenem and Cilastatin for Injection (I.V.) (4)

----- WARNINGS AND PRECAUTIONS -----

- *Hypersensitivity Reactions:* Serious and occasionally fatal hypersensitivity (anaphylactic) reactions have been reported in patients receiving therapy with beta-lactams. If an allergic reaction to Imipenem and Cilastatin for Injection (I.V.) occurs, discontinue the drug immediately (5.1).
- *Seizure Potential:* Seizures and other CNS adverse reactions, such as confusional states and myoclonic activity, have been reported during treatment with Imipenem and Cilastatin for Injection (I.V.). If focal tremors, myoclonus, or seizures occur, patients should be evaluated neurologically, placed on anticonvulsant therapy if not already instituted, and the dosage of Imipenem and Cilastatin for Injection (I.V.) re-examined to determine whether it should be decreased or the antibacterial drug discontinued (5.2).
- *Increased Seizure Potential Due to Interaction with Valproic Acid:* Co-administration of Imipenem and Cilastatin for Injection (I.V.), to patients receiving valproic acid or divalproex sodium results in a reduction in valproic acid concentrations. The valproic acid concentrations may drop below the therapeutic range as a result of this interaction, therefore increasing the risk of breakthrough seizures. The concomitant use of Imipenem and Cilastatin for Injection (I.V.) and valproic acid/divalproex sodium is generally not recommended (5.3, 7.3).
- *Clostridium difficile-Associated Diarrhea (CDAD):* has been reported with use of Imipenem and Cilastatin for Injection (I.V.) and may range in severity from mild diarrhea to fatal colitis. Evaluate if diarrhea occurs (5.4).

----- ADVERSE REACTIONS -----

- The most frequently occurring adverse reactions ($\geq 0.2\%$) in adults were phlebitis, nausea, diarrhea, vomiting, rash, pain injection site, fever, hypotension, seizures, erythema at injection site, dizziness, pruritus, vein induration, urticaria, somnolence (6.1).
- The most frequently occurring adverse reactions ($> 1\%$) in pediatric patients greater than or equal to 3 months of age were diarrhea, rash, phlebitis, gastroenteritis, vomiting, IV site irritation, urine discoloration (6.1).
- The most frequently occurring adverse reactions ($> 1\%$) in neonates to 3 months of age were convulsions, diarrhea, oliguria/anuria, oral candidiasis, rash, tachycardia (6.1).

To report SUSPECTED ADVERSE REACTIONS, contact Fresenius Kabi USA, LLC at 1-800-551-7176 or FDA at 1-800-FDA-1088 or www.fda.gov/medwatch.

----- DRUG INTERACTIONS -----

- *Ganciclovir:* Generalized seizures have been reported in patients who received ganciclovir. Do not co-administer unless benefit outweighs risk (7.1).
- *Probenecid:* Concomitant administration of Imipenem and Cilastatin for Injection (I.V.) and probenecid results in increases in the plasma level and half-life of imipenem. Concomitant administration is not recommended (7.2).
- *Valproic acid/divalproex sodium:* Concomitant use with Imipenem and Cilastatin for Injection (I.V.) is generally not recommended. Consider other antibacterial drugs to treat infections in patients whose seizures are well-controlled on valproic acid or divalproex sodium (5.3, 7.3).

----- USE IN SPECIFIC POPULATIONS -----

- *Renal Impairment:* Dosage adjustment is necessary in patients with renal impairment (2.3).
 - Adult patients with creatinine clearances of less than or equal to 30 mL/min, whether or not undergoing hemodialysis, had a higher risk of seizure activity than those without impairment of renal function (5.2).
 - Therefore, close adherence to the dosing guidelines and regular monitoring of creatinine clearance for these patients is recommended (8.6).

See 17 for PATIENT COUNSELING INFORMATION.

Revised: 5/2019

FULL PRESCRIBING INFORMATION: CONTENTS*

1 INDICATIONS AND USAGE

1.1 Lower Respiratory Tract Infections

1.2 Urinary Tract Infections (complicated and uncomplicated)

- 1.3 Intra-Abdominal Infections
- 1.4 Gynecologic Infections
- 1.5 Bacterial Septicemia
- 1.6 Bone and Joint Infections
- 1.7 Skin and Skin Structure Infections
- 1.8 Endocarditis
- 1.9 Limitations of Use
- 1.10 Usage

2 DOSAGE AND ADMINISTRATION

- 2.1 Dosage in Adults
- 2.2 Dosage in Pediatric Patients
- 2.3 Dosage in Adult Patients with Renal Impairment
- 2.4 Dosage in Hemodialysis Patients
- 2.5 Reconstitution and Preparation of Imipenem and Cilastatin for Injection (I.V.) Solution for Intravenous Administration
- 2.6 Storage of Reconstituted Solutions
- 2.7 Incompatibility and Compatibility of Imipenem and Cilastatin for Injection (I.V.) with other Antibacterial Drugs

3 DOSAGE FORMS AND STRENGTHS

4 CONTRAINDICATIONS

5 WARNINGS AND PRECAUTIONS

- 5.1 Hypersensitivity Reactions
- 5.2 Seizure Potential
- 5.3 Increased Seizure Potential Due to Interaction with Valproic Acid
- 5.4 *Clostridium difficile*-Associated Diarrhea (CDAD)
- 5.5 Development of Drug-Resistant Bacteria

6 ADVERSE REACTIONS

- 6.1 Clinical Trials Experience
- 6.2 Postmarketing Experience

7 DRUG INTERACTIONS

- 7.1 Ganciclovir
- 7.2 Probenecid
- 7.3 Valproic Acid

8 USE IN SPECIFIC POPULATIONS

- 8.1 Pregnancy
- 8.2 Lactation
- 8.4 Pediatric Use
- 8.5 Geriatric Use
- 8.6 Renal Impairment

10 OVERDOSAGE

11 DESCRIPTION

12 CLINICAL PHARMACOLOGY

- 12.1 Mechanism of Action
- 12.3 Pharmacokinetics
- 12.4 Microbiology

13 NONCLINICAL TOXICOLOGY

- 13.1 Carcinogenesis, Mutagenesis, Impairment of Fertility

16 HOW SUPPLIED/STORAGE AND HANDLING

- 16.1 How Supplied
- 16.2 Storage and Handling

17 PATIENT COUNSELING INFORMATION

* Sections or subsections omitted from the full prescribing information are not listed.

FULL PRESCRIBING INFORMATION

1 INDICATIONS AND USAGE

1.1 Lower Respiratory Tract Infections

Imipenem and Cilastatin for Injection, USP (I.V.) for intravenous use is indicated for the treatment of lower respiratory tract infections caused by susceptible strains of *Staphylococcus aureus* (penicillinase-producing isolates), *Acinetobacter* species, *Enterobacter* species, *Escherichia coli*, *Haemophilus influenzae*, *Haemophilus parainfluenzae*, *Klebsiella* species, *Serratia marcescens*.

1.2 Urinary Tract Infections (complicated and uncomplicated)

Imipenem and Cilastatin for Injection, USP (I.V.) is indicated for the treatment of urinary tract infections (complicated and uncomplicated) caused by susceptible strains of *Enterococcus faecalis*, *Staphylococcus aureus* (penicillinase-producing isolates), *Enterobacter* species, *Escherichia coli*, *Klebsiella* species, *Morganella morganii*, *Proteus vulgaris*, *Providencia rettgeri*, *Pseudomonas aeruginosa*.

1.3 Intra-Abdominal Infections

Imipenem and Cilastatin for Injection, USP (I.V.) is indicated for the treatment of intraabdominal infections caused by susceptible strains of *Enterococcus faecalis*, *Staphylococcus aureus* (penicillinase-producing isolates), *Staphylococcus epidermidis*, *Citrobacter* species, *Enterobacter* species, *Escherichia coli*, *Klebsiella* species, *Morganella morganii*, *Proteus* species, *Pseudomonas aeruginosa*, *Bifidobacterium* species, *Clostridium* species, *Eubacterium* species, *Peptococcus* species, *Peptostreptococcus* species, *Propionibacterium* species, *Bacteroides* species including *B. fragilis*, *Fusobacterium* species.

1.4 Gynecologic Infections

Imipenem and Cilastatin for Injection, USP (I.V.) is indicated for the treatment of gynecologic infections caused by susceptible strains of *Enterococcus faecalis*, *Staphylococcus aureus* (penicillinase-producing isolates), *Staphylococcus epidermidis*, *Streptococcus agalactiae* (Group B streptococci), *Enterobacter* species, *Escherichia coli*, *Gardnerella vaginalis*, *Klebsiella* species, *Proteus* species, *Bifidobacterium* species, *Peptococcus* species, *Peptostreptococcus* species, *Propionibacterium* species, *Bacteroides* species including *B. fragilis*.

1.5 Bacterial Septicemia

Imipenem and Cilastatin for Injection, USP (I.V.) is indicated for the treatment of bacterial septicemia caused by susceptible strains of *Enterococcus faecalis*, *Staphylococcus aureus* (penicillinase-producing isolates), *Enterobacter* species, *Escherichia coli*, *Klebsiella* species, *Pseudomonas aeruginosa*, *Serratia* species, *Bacteroides* species including *B. fragilis*.

1.6 Bone and Joint Infections

Imipenem and Cilastatin for Injection, USP (I.V.) is indicated for the treatment of bone and joint infections caused by susceptible strains of *Enterococcus faecalis*, *Staphylococcus aureus* (penicillinase-producing isolates), *Staphylococcus epidermidis*, *Enterobacter* species, *Pseudomonas aeruginosa*.

1.7 Skin and Skin Structure Infections

Imipenem and Cilastatin for Injection, USP (I.V.) is indicated for the treatment of skin and skin structure infections caused by susceptible strains of *Enterococcus faecalis*, *Staphylococcus aureus* (penicillinase-producing isolates), *Staphylococcus epidermidis*, *Acinetobacter* species, *Citrobacter* species, *Enterobacter* species, *Escherichia coli*, *Klebsiella* species, *Morganella morganii*, *Proteus vulgaris*, *Providencia rettgeri*,

Pseudomonas aeruginosa, *Serratia* species, *Peptococcus* species, *Peptostreptococcus* species, *Bacteroides* species including *B. fragilis*, *Fusobacterium* species.

1.8 Endocarditis

Imipenem and Cilastatin for Injection, USP (I.V.) is indicated for the treatment of endocarditis caused by susceptible strains of *Staphylococcus aureus* (penicillinase-producing isolates).

1.9 Limitations of Use

- Imipenem and Cilastatin for Injection, USP (I.V.) is not indicated in patients with meningitis because safety and efficacy have not been established.
- Imipenem and Cilastatin for Injection, USP (I.V.) is not recommended in pediatric patients with CNS infections because of the risk of seizures [see *Dosage and Administration* (2.2), *Warnings and Precautions* (5.2), and *Use in Specific Populations* (8.4)] .
- Imipenem and Cilastatin for Injection, USP (I.V.) is not recommended in pediatric patients less than 30 kg with impaired renal function, as no data are available [see *Use in Specific Populations* (8.4), and *Dosage and Administration* (2.2)] .
- Periodic assessment of organ system functions, including renal, hepatic and hematopoietic, is advisable during prolonged therapy.

1.10 Usage

To reduce the development of drug-resistant bacteria and maintain the effectiveness of Imipenem and Cilastatin for Injection, USP (I.V.) and other antibacterial drugs, Imipenem and Cilastatin for Injection, USP (I.V.) should be used only to treat infections that are proven or strongly suspected to be caused by susceptible bacteria. When culture and susceptibility information are available, they should be considered in selecting or modifying antibacterial therapy. In the absence of such data, local epidemiology and susceptibility patterns may contribute to the empiric selection of therapy.

2 DOSAGE AND ADMINISTRATION

2.1 Dosage in Adults

For Intravenous Injection Only

- The dosage of Imipenem and Cilastatin for Injection (I.V.) in adult patients should be based on suspected or confirmed pathogen susceptibility as shown in Table 1 below. The dosage recommendations for Imipenem and Cilastatin for Injection (I.V.) represent the quantity of imipenem to be administered. An equivalent amount of cilastatin is also present in the solution.
- These doses should be used for patients with creatinine clearance of greater than or equal to 90 mL/min. A reduction in dose must be made for patients with creatinine clearance less than 90 mL/min as shown in Table 3 [see *Dosage and Administration* (2.3)] .
- Recommend that the maximum total daily dosage not exceed 4 g/day.
- Administer 500 mg by intravenous infusion over 20 to 30 minutes.
- Administer 1,000 mg by intravenous infusion over 40 to 60 minutes.
- In patients who develop nausea during the infusion, the rate of infusion may be slowed.

Table 1: Dosage of Imipenem and Cilastatin for Injection (I.V.) in Adult Patients with Creatinine Clearance Greater than or Equal to 90 mL/min

Suspected or Proven Pathogen Susceptibility	Dosage of Imipenem and Cilastatin for Injection (I.V.)
If the infection is suspected or proven to be due to a susceptible bacterial species	500 mg every 6 hours OR 1,000 mg every 8 hours

If the infection is suspected or proven to be due to bacterial species with intermediate susceptibility [see Microbiology (12.4)]	1,000 mg every 6 hours
---	------------------------

2.2 Dosage in Pediatric Patients

Imipenem and Cilastatin for Injection (I.V.) is not recommended in pediatric patients with CNS infections because of the risk of seizures [see Use in Specific Populations (8.4)] .

Imipenem and Cilastatin for Injection (I.V.) is not recommended in pediatric patients < 30 kg with renal impairment, as no data are available [see Use in Specific Populations (8.4)] .

Based on studies in adults, the maximum total daily dose in pediatric patients should not exceed 4 g/day [see Dosage and Administration (2.1)] .

The recommended dosage for pediatric patients with non-CNS infections is shown in Table 2 below:

Table 2: Recommended Imipenem and Cilastatin for Injection (I.V.) Dosage in Pediatric Patients for Non-CNS Infections

Age	Dose (mg/kg) *,†	Frequency (hours)
Greater than or equal to 3 Months of Age		
	15-25 mg/kg	Every 6 hours
Less than or equal to 3 months of age (Greater than or equal to 1,500 g body weight)		
4 weeks to 3 months of age	25 mg/kg	Every 6 hours
1 to 4 weeks of age	25 mg/kg	Every 8 hours
Less than 1 week of age	25 mg/kg	Every 12 hours

* Doses less than or equal to 500 mg should be given by intravenous infusion over 20 to 30 minutes

† Doses greater than 500 mg should be given by intravenous infusion over 40 to 60 minutes

Recommend that the maximum total daily dosage not exceed 4 g/day

2.3 Dosage in Adult Patients with Renal Impairment

Patients with creatinine clearance less than 90 mL/min require dosage reduction of Imipenem and Cilastatin for Injection (I.V.) as indicated in Table 3. The serum creatinine should represent a steady state of renal function. Use the Cockcroft-Gault method described below to calculate the creatinine clearance:

$$\text{Males: } \frac{(\text{weight in kg}) \times (140 - \text{age in years})}{(72) \times \text{serum creatinine (mg/100 mL)}}$$

$$\text{Females: } (0.85) \times (\text{value calculated for males})$$

Table 3: Dosage of Imipenem and Cilastatin for Injection (I.V.) for Adult Patients in Various Renal Function Groups Based on Estimated Creatinine Clearance (CLcr)

	Creatinine clearance (mL/min)			
	Greater than or equal to 90	Less than 90 to greater than or equal to 60	Less than 60 to greater than or equal to 30	Less than 30 to greater than or equal to 15
Dosage of Imipenem and Cilastatin for	500 mg every 6 hours	400 mg every 6 hours	300 mg every 6 hours	200 mg every 6 hours

Injection (I.V.)*,† If the infection is suspected or proven to be due to a susceptible bacterial species:	OR			
	1,000 mg every 8 hours	500 mg every 6 hours	500 mg every 8 hours	500 mg every 12 hours
Dosage of Imipenem and Cilastatin for Injection (I.V.)*,† If the infection is suspected or proven to be due to bacterial species with intermediate susceptibility <i>[see Microbiology (12.4)]</i> :	1,000 mg every 6 hours	750 mg every 8 hours	500 mg every 6 hours	500 mg every 12 hours

* Administer doses less than or equal to 500 mg by intravenous infusion over 20 to 30 minutes.

† Administer doses greater than 500 mg by intravenous infusion over 40 to 60 minutes. In patients who develop nausea during the infusion, the rate of infusion may be slowed

In patients with creatinine clearances of less than 30 to greater than or equal to 15 mL/min, there may be an increased risk of seizures *[see Warnings and Precautions (5.2) and Use in Specific Populations (8.6)]* . Patients with creatinine clearance less than 15 mL/min should not receive Imipenem and Cilastatin for Injection (I.V.) unless hemodialysis is instituted within 48 hours. There is inadequate information to recommend usage of Imipenem and Cilastatin for Injection (I.V.) for patients undergoing peritoneal dialysis.

2.4 Dosage in Hemodialysis Patients

When treating patients with creatinine clearances of less than 15 mL/min who are undergoing hemodialysis, use the dosage recommendations for patients with creatinine clearances of less than 30 to greater than or equal to 15 mL/min in Table 3 above *[see Dosage and Administration (2.3)]*. Both imipenem and cilastatin are cleared from the circulation during hemodialysis. The patient should receive Imipenem and Cilastatin for Injection (I.V.) after hemodialysis and at intervals timed from the end of that hemodialysis session. Dialysis patients, especially those with background CNS disease, should be carefully monitored; for patients on hemodialysis, Imipenem and Cilastatin for Injection (I.V.) is recommended only when the benefit outweighs the potential risk of seizures *[see Warnings and Precautions (5.2)]*.

2.5 Reconstitution and Preparation of Imipenem and Cilastatin for Injection (I.V.) Solution for Intravenous Administration

Imipenem and Cilastatin for Injection (I.V.) Vials

- Do not use diluents containing benzyl alcohol to reconstitute Imipenem and Cilastatin for Injection (I.V.) for administration to neonates because it has been associated with toxicity in neonates. While toxicity has not been demonstrated in pediatric patients greater than three months of age, small pediatric patients in this age range may also be at risk for benzyl alcohol toxicity.
- Contents of the vials must be reconstituted by adding approximately 10 mL of the appropriate diluent to the vial. List of appropriate diluents are as follows:
 - 0.9% Sodium Chloride Injection
 - 5% Dextrose Injection
 - 5% Dextrose and 0.9% Sodium Chloride Injection
 - 5% Dextrose Injection with 0.225% or 0.45% saline solution
- Reconstituted Solutions of Imipenem and Cilastatin for Injection (I.V.) range from colorless to yellow. Variations of color within this range do not affect the potency of the product.
- The reconstituted suspension must not be administered by direct Intravenous Infusion
- After reconstitution, shake vial well and transfer the resulting suspension to 100 mL of an

appropriate infusion solution before administering by intravenous infusion.

- Repeat transfer of the resulting suspension with an additional 10 mL of infusion solution to ensure complete transfer of vial contents to the infusion solution. Agitate the resulting mixture until clear.
- Parenteral drug products should be inspected visually for particulate matter and discoloration prior to administration, whenever solution and container permit.

2.6 Storage of Reconstituted Solutions

Vials (After Reconstitution)

- Imipenem and Cilastatin for Injection (I.V.), as supplied in single dose vials and reconstituted with the appropriate diluents [see *Dosage and Administration (2.5)*], maintains satisfactory potency for 4 hours at room temperature or for 24 hours under refrigeration (5°C). Do not freeze solutions of Imipenem and Cilastatin for Injection (I.V.).

2.7 Incompatibility and Compatibility of Imipenem and Cilastatin for Injection (I.V.) with other Antibacterial Drugs

- Do not mix Imipenem and Cilastatin for Injection (I.V.) with, or physically add to, other antibacterial drugs
- Imipenem and Cilastatin for Injection (I.V.) may be administered concomitantly with other antibacterial drugs, such as aminoglycosides.

3 DOSAGE FORMS AND STRENGTHS

For Injection Imipenem and Cilastatin for Injection (I.V.) is a sterile powder mixture for reconstitution in single-dose vials containing:

- 250 mg imipenem (anhydrous equivalent) and 250 mg cilastatin sodium
- 500 mg imipenem (anhydrous equivalent) and 500 mg cilastatin sodium

4 CONTRAINDICATIONS

Imipenem and Cilastatin for Injection (I.V.) is contraindicated in patients who have shown hypersensitivity to any component of this product.

5 WARNINGS AND PRECAUTIONS

5.1 Hypersensitivity Reactions

Serious and occasionally fatal hypersensitivity (anaphylactic) reactions have been reported in patients receiving therapy with beta-lactams. These reactions are more likely to occur in individuals with a history of sensitivity to multiple allergens.

There have been reports of individuals with a history of penicillin hypersensitivity who have experienced severe hypersensitivity reactions when treated with another beta-lactam. Before initiating therapy with Imipenem and Cilastatin for Injection (I.V.), careful inquiry should be made concerning previous hypersensitivity reactions to penicillins, cephalosporins, other betalactams and other allergens. If an allergic reaction to Imipenem and Cilastatin for Injection (I.V.) occurs, discontinue the drug immediately. Serious anaphylactic reactions require immediate emergency treatment as clinically indicated.

5.2 Seizure Potential

Seizures and other CNS adverse experiences, such as confusional states and myoclonic activity, have been reported during treatment with Imipenem and Cilastatin for Injection (I.V.), especially when recommended dosages were exceeded [see *Adverse Reactions (6.1, 6.2)*]. These experiences have occurred most commonly in patients with CNS disorders (e.g., brain lesions or history of seizures)

and/or compromised renal function [see *Use in Specific Populations (8.6)*]. However, there have been reports of CNS adverse experiences in patients who had no recognized or documented underlying CNS disorder or compromised renal function.

Anticonvulsant therapy should be continued in patients with known seizure disorders. If focal tremors, myoclonus, or seizures occur, patients should be evaluated neurologically, placed on anticonvulsant therapy if not already instituted, and the dosage of Imipenem and Cilastatin for Injection (I.V.) re-examined to determine whether it should be decreased or the antibacterial drug discontinued.

5.3 Increased Seizure Potential Due to Interaction with Valproic Acid

Case reports in the literature have shown that co-administration of carbapenems, including Imipenem and Cilastatin for Injection (I.V.), to patients receiving valproic acid or divalproex sodium results in a reduction in valproic acid concentrations. The valproic acid concentrations may drop below the therapeutic range as a result of this interaction, therefore increasing the risk of breakthrough seizures. Increasing the dose of valproic acid or divalproex sodium may not be sufficient to overcome this interaction. The concomitant use of Imipenem and Cilastatin for Injection (I.V.) and valproic acid/divalproex sodium is generally not recommended.

Antibacterials other than carbapenems should be considered to treat infections in patients whose seizures are well controlled on valproic acid or divalproex sodium. If administration of Imipenem and Cilastatin for Injection (I.V.) is necessary, supplemental anti-convulsant therapy should be considered [see *Drug Interactions (7.3)*]. Close adherence to the recommended dosage and dosage schedules is urged, especially in patients with known factors that predispose to convulsive activity.

5.4 *Clostridium difficile*-Associated Diarrhea (CDAD)

Clostridium difficile associated diarrhea (CDAD) has been reported with use of nearly all antibacterial agents, including Imipenem and Cilastatin for Injection (I.V.), and may range in severity from mild diarrhea to fatal colitis. Treatment with antibacterial agents alters the normal flora of the colon leading to overgrowth of *C. difficile*.

C. difficile produces toxins A and B which contribute to the development of CDAD.

Hypertoxin producing strains of *C. difficile* cause increased morbidity and mortality, as these infections can be refractory to antimicrobial therapy and may require colectomy. CDAD must be considered in all patients who present with diarrhea following antibacterial drug use. Careful medical history is necessary since CDAD has been reported to occur over two months after the administration of antibacterial agents.

If CDAD is suspected or confirmed, ongoing antibacterial drug use not directed against *C. difficile* may need to be discontinued. Appropriate fluid and electrolyte management, protein supplementation, antibacterial drug treatment of *C. difficile*, and surgical evaluation should be instituted as clinically indicated.

5.5 Development of Drug-Resistant Bacteria

As with other antibacterial drugs, prolonged use of Imipenem and Cilastatin for Injection (I.V.) may result in overgrowth of nonsusceptible organisms. Repeated evaluation of the patient's condition is essential. If superinfection occurs during therapy, appropriate measures should be taken.

Prescribing Imipenem and Cilastatin for Injection (I.V.) in the absence of a proven or strongly suspected bacterial infection or a prophylactic indication is unlikely to provide benefit to the patient and increases the risk of the development of drug-resistant bacteria.

6 ADVERSE REACTIONS

The following serious adverse reactions are described in greater detail in the Warnings and

Precautions section.

- Hypersensitivity Reactions [see Warnings and Precautions (5.1)]
- Seizure Potential [see Warnings and Precautions (5.2)]
- Increased Seizure Potential Due to Interaction with Valproic Acid [see Warnings and Precautions (5.3)]
- *Clostridium difficile*-Associated Diarrhea (CDAD) [see Warnings and Precautions (5.4)]
- Development of Drug-Resistant Bacteria [see Warnings and Precautions (5.5)]

6.1 Clinical Trials Experience

Because clinical trials are conducted under widely varying conditions, adverse reaction rates observed in the clinical trials of a drug cannot be directly compared to rates in the clinical trials of another drug and may not reflect the rates observed in practice.

Adult Patients

During clinical investigations 1,723 patients were treated with Imipenem and Cilastatin for Injection (I.V.). Table 4 shows the incidence of adverse reactions reported during the clinical investigations of adult patients treated with Imipenem and Cilastatin for Injection (I.V.).

Table 4: Incidence (%)* of Adverse Reactions Reported During Clinical Investigations of Adult Patients Treated with Imipenem and Cilastatin for Injection (I.V.)

Body System	Adverse Reactions	Frequency (%)
Local Administration site	Phlebitis/ thrombophlebitis	3.1%
	Pain at the injection site	0.7%
	Erythema at the injection site	0.4%
	Vein induration	0.2%
Gastrointestinal	Nausea	2%
	Diarrhea	1.8%
	Vomiting	1.5%
Skin	Rash	0.9%
	Pruritus	0.3%
	Urticaria	0.2%
Vascular	Hypotension	0.4%
Body as a Whole	Fever	0.5%
Nervous system	Seizures	0.4%
	Dizziness	0.3%
	Somnolence	0.2%

* Adverse reactions with an incidence $\geq 0.2\%$ of Imipenem and Cilastatin for Injection (I.V.) -treated adult patients.

Additional adverse reactions reported in less than 0.2% of the patients or reported since the drug was marketed are listed within each body system in order of decreasing severity [see Table 5].

Table 5: Additional Adverse Reactions Occurring in Less than 0.2% of Adult Patients Listed within Each Body System in Order of Decreasing Severity

Body System	Adverse Reactions
Gastrointestinal	Pseudomembranous Colitis (the onset of Pseudomembranous colitis symptoms), Hemorrhagic Colitis
	Gastroenteritis
	Abdominal Pain

	Glossitis
	Tongue Papillar
	Hypertrophy
	Heartburn
	Pharyngeal Pain
	Increased Salivation
CNS	Encephalopathy
	Confusion
	Myoclonus
	Paresthesia
	Vertigo
	Headache
Special Senses	Hearing Loss
	Tinnitus
Respiratory	Chest Discomfort
	Dyspnea
	Hyperventilation
	Thoracic Spine Pain
Cardiovascular	Palpitations
	Tachycardia
Skin	Erythema Multiforme
	Angioneurotic Edema
	Flushing
	Cyanosis
	Hyperhidrosis
	Skin Texture Changes
	Candidiasis
	Pruritus Vulvae
Local Administration site	Infused vein infection
Body as a Whole	Polyarthralgia
	Asthenia/Weakness
Renal	Oliguria/Anuria
	Polyuria

Adverse Laboratory Changes

The following adverse laboratory changes were reported during clinical trials:

Hepatic: Increased alanine aminotransferase (ALT or SGPT), aspartate aminotransferase (AST or SGOT), alkaline phosphatase, bilirubin, and lactate dehydrogenase (LDH)

Hemic: Increased eosinophils, positive Coombs test, increased WBC, increased platelets, decreased hemoglobin and hematocrit, increased monocytes, abnormal prothrombin time, increased lymphocytes, increased basophils

Electrolytes: Decreased serum sodium, increased potassium, increased chloride

Renal: Increased BUN, creatinine

Urinalysis: Presence of urine protein, urine red blood cells, urine white blood cells, urine casts, urine bilirubin, and urine urobilinogen.

Pediatric Patients

Table 6: Incidence (%)* of Adverse Reactions Reported During Clinical Investigations of Pediatric Patients Greater Than or Equal to 3 Months of Age Treated with Imipenem and Cilastatin for Injection (I.V.)

Body System	Adverse Reactions	Frequency (%)
Local Administration Site	Phlebitis	2.2%
	Intravenous Site Irritation	1.1%
Gastrointestinal	Diarrhea	3.9%
	Gastroenteritis	1.1%
	Vomiting	1.1%
Skin	Rash	2.2%
Renal	Urine Discoloration	1.1%

* Adverse reactions that occurred in > 1 % of Imipenem and Cilastatin for Injection (I.V.)-treated pediatric patients (greater than or equal to 3 months of age)

Table 7: Incidence (%)* of Adverse Reactions Reported During Clinical Investigations of Pediatric Patients Neonates to 3 Months of Age Treated with Imipenem and Cilastatin for Injection (I.V.)

Body System	Adverse Reactions	Frequency (%)
Gastrointestinal	Diarrhea	3%
CNS	Convulsions	5.9%
Cardiovascular	Tachycardia	1.5%
Skin	Rash	1.5%
Body as a Whole	Oral Candidiasis	1.5%
Renal	Oliguria/Anuria	2.2%

* Adverse reactions that occurred in > 1 % of Imipenem and Cilastatin for Injection (I.V.)-treated pediatric patients (neonates to 3 months of age)

Adverse Laboratory Changes

The following adverse laboratory changes were reported in studies of 178 pediatric patients 3 months of age: increased AST (SGOT), decreased hemoglobin/hematocrit, increased platelets, increased eosinophils, increased ALT (SGPT), increased urine protein, decreased neutrophils.

The following adverse laboratory changes were reported in studies of 135 patients (neonates to 3 months of age): increased eosinophils, increased AST (SGPT), increased serum creatinine, increased/decreased platelet count, increased/decreased bilirubin, increased ALT (SGPT), increased alkaline phosphatase, increased/decreased hematocrit.

6.2 Postmarketing Experience

The following adverse reactions have been identified during post-approval use of Imipenem and Cilastatin for Injection (I.V.). Because these reactions are reported voluntarily from a population of uncertain size, it is not always possible to reliably estimate their frequency or establish a causal relationship to drug exposure.

Table 8: Adverse Reactions Identified During Post Approval Use of Imipenem and Cilastatin for Injection (I.V.)

Body System	Adverse Reactions
Gastrointestinal	Hepatitis (including fulminant hepatitis)
	Hepatic failure

	Jaundice
	Staining of the teeth and/or tongue
Hematologic	Pancytopenia
	Bone marrow depression
	Thrombocytopenia
	Neutropenia
	Leukopenia
	Hemolytic anemia
CNS	Tremor
	Psychic disturbances including hallucinations
	Dyskinesia
	Agitation
Special Senses	Taste perversion
Skin	Stevens-Johnson syndrome
	Toxic epidermal necrolysis
Body as a whole	Drug fever
Renal	Acute renal failure
	Urine discoloration

Adverse Laboratory Changes

Adverse laboratory changes reported since the drug was marketed were:

Hematologic: agranulocytosis.

Examination of published literature and spontaneous adverse reactions reports suggested a similar spectrum of adverse reactions in adult and pediatric patients.

7 DRUG INTERACTIONS

7.1 Ganciclovir

Generalized seizures have been reported in patients who received ganciclovir and Imipenem and Cilastatin for Injection (I.V.). These drugs should not be used concomitantly with Imipenem and Cilastatin for Injection (I.V.) unless the potential benefits outweigh the risks.

7.2 Probenecid

Concomitant administration of Imipenem and Cilastatin for Injection (I.V.) and probenecid results in increases in the plasma level and half-life of imipenem. Therefore, it is not recommended that probenecid be given concomitantly with Imipenem and Cilastatin for Injection (I.V.).

7.3 Valproic Acid

Case reports in the literature have shown that co-administration of carbapenems, including Imipenem and Cilastatin for Injection (I.V.), to patients receiving valproic acid or divalproex sodium results in a reduction in valproic acid concentrations. The valproic acid concentrations may drop below the therapeutic range as a result of this interaction, therefore increasing the risk of breakthrough seizures. Although the mechanism of this interaction is unknown, data from *in vitro* and animal studies suggest that carbapenems may inhibit the hydrolysis of valproic acid's glucuronide metabolite (VPA-g) back to valproic acid, thus decreasing the serum concentrations of valproic acid [see *Warnings and Precautions* (5.3)]. The concomitant use of Imipenem and Cilastatin for Injection (I.V.) and valproic acid/divalproex sodium is generally not recommended. Antibacterials other than carbapenems should be considered to treat infections in patients whose seizures are well-controlled on valproic acid or divalproex sodium.

8 USE IN SPECIFIC POPULATIONS

8.1 Pregnancy

Risk Summary

Available data from a small number of postmarketing cases with Imipenem and Cilastatin for Injection (I.V.) use in pregnancy are not sufficient to identify any drug-associated risks for major birth defects, miscarriage, or adverse maternal or fetal outcomes.

Developmental toxicity studies with imipenem and cilastatin sodium (alone or in combination) administered to mice, rats, rabbits, and monkeys at doses 0.4 to 2.9 times the recommended human dose (RHD), (based on body surface area), showed no drug-induced fetal malformations.

Embryofetal development studies with imipenem/cilastatin administered to cynomolgus monkeys at doses similar to the RHD (based on body surface area) showed an increase in embryonic loss (*see Data*)

The background risk of major birth defects and miscarriage for the indicated populations is unknown. All pregnancies have a background risk of birth defect, loss, or other adverse outcomes. The background risk of major birth defects is 2-4% and of miscarriage is 15-20% of clinically recognized pregnancies within the general population.

Data

Animal Data

Reproductive toxicity studies with imipenem and cilastatin (alone or in combination) administered to mice, rats, and rabbits showed no evidence of effects on embryofetal (mice, rats and rabbits) or pre/postnatal (rats) development.

Imipenem was administered intravenously to rats (gestation days (GD) 7 to 17) and rabbits (GD 6 to 18) at doses up to 900 and 60 mg/kg/day, respectively, approximately 2.9 and 0.4 times the RHD (based on body surface area).

Cilastatin was administered subcutaneously to rats (GD 6 to 17) and intravenously to rabbits (GD 6 to 18) at doses up to 1000 and 300 mg/kg/day, respectively, approximately 3.2 and 1.9 times the RHD (based on body surface area).

Imipenem/cilastatin was administered intravenously to mice at doses up to 320 mg/kg/day (GD 6 to 15). In two separate studies, imipenem/cilastatin was administered to rats (GD 6 to 17 and GD 15 to day 21 postpartum) both intravenously at doses up to 80 mg/kg/day and subcutaneously at 320 mg/kg/day. The higher dose is approximately equal to the RHD (based on body surface area).

Imipenem/cilastatin administered intravenously to pregnant cynomolgus monkeys during organogenesis at 100 mg/kg/day, approximately 0.6 times the RHD (based on body surface area), at an infusion rate mimicking human clinical use, was not associated with fetal malformations, but there was an increase in embryonic loss relative to controls. Imipenem/cilastatin administered to pregnant cynomolgus monkeys during organogenesis at 40 mg/kg/day by bolus intravenous injection caused significant maternal toxicity including death and embryofetal loss.

8.2 Lactation

Risk Summary

There are insufficient data on the presence of imipenem/cilastatin in human milk, and no data on the effects on the breastfed child, or the effects on milk production. The developmental and health benefits of breastfeeding should be considered along with the mother's clinical need for Imipenem and Cilastatin for Injection (I.V.) and any potential adverse effects on the breastfed child from Imipenem and Cilastatin for Injection (I.V.) or from the underlying maternal condition.

8.4 Pediatric Use

Use of Imipenem and Cilastatin for Injection (I.V.) in pediatric patients is supported by evidence from adequate and well-controlled trials of Imipenem and Cilastatin for Injection (I.V.) in adults and clinical studies in pediatric patients [see *Dosage and Administration (2.2)* and *Clinical Pharmacology (12.3)*].

Imipenem and Cilastatin for Injection (I.V.) is not recommended in pediatric patients with CNS infections because of the risk of seizures.

Imipenem and Cilastatin for Injection (I.V.) is not recommended in pediatric patients less than 30 kg with renal impairment, as no data are available.

8.5 Geriatric Use

Of the approximately 3,600 subjects \geq 18 years of age in clinical studies of Imipenem and Cilastatin for Injection (I.V.), including postmarketing studies, approximately 2,800 received Imipenem and Cilastatin for Injection (I.V.). Of the subjects who received Imipenem and Cilastatin for Injection (I.V.), data are available on approximately 800 subjects who were 65 and over, including approximately 300 subjects who were 75 and over. No overall differences in safety or effectiveness were observed between these subjects and younger subjects. Other reported clinical experience has not identified differences in responses between the elderly and younger patients, but greater sensitivity of some older individuals cannot be ruled out.

This drug is known to be substantially excreted by the kidney, and the risk of toxic reactions to this drug may be greater in patients with impaired renal function. Because elderly patients are more likely to have decreased renal function, care should be taken in dose selection, and it may be useful to monitor renal function.

No dosage adjustment is required based on age [see *Clinical Pharmacology (12.3)*]. Dosage adjustment in the case of renal impairment is necessary [see *Dosage and Administration (2.3)*].

8.6 Renal Impairment

Dosage adjustment is necessary in patients with renal impairment [see *Dosage and Administration (2.3)*]. Adult patients with creatinine clearances of less than or equal to 30 mL/min, whether or not undergoing hemodialysis, had a higher risk of seizure activity than those without impairment of renal function [see *Warnings and Precautions (5.2)*]. Therefore, close adherence to the dosing guidelines and regular monitoring of creatinine clearance for these patients is recommended.

10 OVERDOSAGE

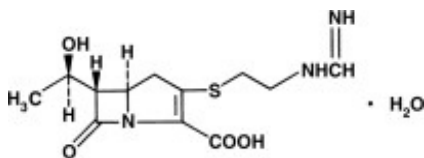
In the case of overdosage, discontinue Imipenem and Cilastatin for Injection (I.V.), treat symptomatically, and institute supportive measures as required. Imipenem and Cilastatin for Injection (I.V.) is hemodialyzable.

11 DESCRIPTION

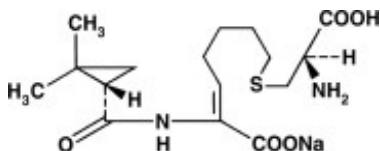
Imipenem and Cilastatin for Injection, USP (I.V.) (imipenem and cilastatin) for Injection is a sterile formulation of imipenem, a penem antibacterial, and cilastatin, a renal dehydropeptidase inhibitor with sodium bicarbonate added as a buffer. Imipenem and Cilastatin for Injection, USP (I.V.) is an antibacterial drug for intravenous administration.

Imipenem (N-formimidoylthienamycin monohydrate) is a crystalline derivative of thienamycin, which is produced by *Streptomyces cattleya*. Its chemical name is (5 R,6 S)-3-[[2(formimidoylamino)ethyl]thio]-6-[(R)-1-hydroxyethyl]-7-oxo-1-azabicyclo[3.2.0]hept-2-ene-2-carboxylic acid monohydrate. It is an off-white, nonhygroscopic crystalline compound with a molecular weight of 317.37. It is sparingly soluble in water and slightly soluble in methanol. Its empirical formula is $C_{17}H_{17}N_3O_4 \cdot H_2O$, and its

structural formula is:



Cilastatin sodium is the sodium salt of a derivatized heptenoic acid. Its chemical name is sodium (Z)-7[[(R)-2-amino-2-carboxyethyl]thio]-2-[(S)-2,2-dimethylcyclopropanecarboxamido]2-heptenoate. It is an off-white to yellowish-white, hygroscopic, amorphous compound with a molecular weight of 380.43. It is very soluble in water and in methanol. Its empirical formula is $C_{16}H_{25}N_2O_5Na$, and its structural formula is:



Imipenem and Cilastatin for Injection, USP (I.V.) is buffered to provide solutions in the pH range of 6.5 to 8.5. There is no significant change in pH when solutions are prepared and used as directed. [see *How Supplied/ Storage and Handling* (16.1).] Each Imipenem and Cilastatin for Injection, USP (I.V.) 250 mg/250 mg vial contains imipenem USP 250 mg (anhydrous equivalent) and cilastatin sodium USP equivalent to 250 mg cilastatin and each 500 mg/500 mg vial contains imipenem USP 500 mg (anhydrous equivalent) and cilastatin sodium USP equivalent to 500 mg cilastatin. In addition, the 250 mg/250 mg vial contains 10 mg of sodium bicarbonate and the 500 mg/500 mg vial contains 20 mg of sodium bicarbonate. The sodium content of the 250 mg/250 mg vial is 18.8 mg (0.8 mEq) and the sodium content for the 500 mg/500 mg vial is 37.5 mg (1.6 mEq). Solutions of Imipenem and Cilastatin for Injection, USP (I.V.) range from colorless to yellow. Variations of color within this range do not affect the potency of the product.

12 CLINICAL PHARMACOLOGY

12.1 Mechanism of Action

Imipenem and Cilastatin for Injection (I.V.) is a combination of imipenem and cilastatin. Imipenem is a penem antibacterial drug [see *Microbiology* (12.4)] . Cilastatin sodium is a renal dehydropeptidase inhibitor that limits the renal metabolism of imipenem.

12.3 Pharmacokinetics

Intravenous infusion of Imipenem and Cilastatin for Injection (I.V.) over 20 minutes results in peak plasma levels of imipenem antimicrobial activity that range from 21 to 58 mcg/mL for the 500 mg dose, and from 41 to 83 mcg/mL for the 1,000 mg dose. At these doses, plasma levels of imipenem antimicrobial activity decline to below 1 mcg/mL or less in 4 to 6 hours. Peak plasma levels of cilastatin following a 20-minute intravenous infusion of Imipenem and Cilastatin for Injection (I.V.) range from 31 to 49 mcg/mL for the 500 mg dose, and from 56 to 88 mcg/mL for the 1,000 mg dose.

Distribution

The binding of imipenem to human serum proteins is approximately 20% and that of cilastatin is approximately 40%.

Imipenem has been shown to penetrate into human tissues, including vitreous humor, aqueous humor,

lung, peritoneal fluid, CSF, bone, interstitial fluid, skin, and fascia. As there are no adequate and well-controlled studies of imipenem treatment in these additional body sites, the clinical significance of these tissue concentration data is unknown.

After a 1 gram dose of Imipenem and Cilastatin for Injection (I.V.), the following average levels of imipenem were measured (usually at 1 hour post dose except where indicated) in the tissues and fluids listed in Table 9:

Table 9: Average Levels of Imipenem

Tissue or Fluid	N	Imipenem Level mcg/mL or mcg/g	Range
Vitreous Humor	3	3.4 (3.5 hours post dose)	2.88 to 3.6
Aqueous Humor	5	2.99 (2 hours post dose)	2.4 to 3.9
Lung Tissue	8	5.6 (median)	3.5 to 15.5
Sputum	1	2.1	—
Pleural	1	22	—
Peritoneal	12	23.9 S.D.±5.3 (2 hours post dose)	—
Bile	2	5.3 (2.25 hours post dose)	4.6 to 6
CSF (uninflamed)	5	1 (4 hours post dose)	0.26 to 2
CSF (inflamed)	7	2.6 (2 hours post dose)	0.5 to 5.5
Fallopian Tubes	1	13.6	—
Endometrium	1	11.1	—
Myometrium	1	5	—
Bone	10	2.6	0.4 to 5.4
Interstitial Fluid	12	16.4	10 to 22.6
Skin	12	4.4	NA
Fascia	12	4.4	NA

Metabolism

Imipenem, when administered alone, is metabolized in the kidneys by dehydropeptidase I, resulting in relatively low levels in urine. Cilastatin sodium, an inhibitor of this enzyme, effectively prevents renal metabolism of imipenem so that when imipenem and cilastatin sodium are given concomitantly, adequate antibacterial levels of imipenem are achieved in the urine.

Elimination

The plasma half-life of each component is approximately 1 hour. Approximately 70% of the administered imipenem is recovered in the urine within 10 hours after which no further urinary excretion is detectable. Urine concentrations of imipenem in excess of 10 mcg/mL can be maintained for up to 8 hours with Imipenem and Cilastatin for Injection (I.V.) at the 500-mg dose. Approximately 70% of the cilastatin sodium dose is recovered in the urine within 10 hours of administration of Imipenem and Cilastatin for Injection (I.V.). Imipenem/cilastatin sodium is hemodialyzable [see *Overdosage (10)*].

No accumulation of imipenem/cilastatin in plasma or urine is observed with regimens administered as frequently as every 6 hours in patients with normal renal function.

Specific Populations

Geriatric Patients

In healthy elderly volunteers (65 to 75 years of age with normal renal function for their age), the pharmacokinetics of a single dose of imipenem 500 mg and cilastatin 500 mg administered intravenously over 20 minutes are consistent with those expected in subjects with slight renal impairment for which no dosage alteration is considered necessary. The mean plasma half-lives of imipenem and cilastatin are 91

± 7 minutes and 69 ± 15 minutes, respectively. Multiple dosing has no effect on the pharmacokinetics of either imipenem or cilastatin, and no accumulation of imipenem/cilastatin is observed.

Pediatric Patients

Doses of 25 mg/kg/dose in patients 3 months to < 3 years of age, and 15 mg/kg/dose in patients 3 to 12 years of age were associated with mean trough plasma concentrations of imipenem of 1.1 ± 0.4 mcg/mL and 0.6 ± 0.2 mcg/mL following multiple 60-minute infusions, respectively; trough urinary concentrations of imipenem were in excess of 10 mcg/mL for both doses. These doses have provided adequate plasma and urine concentrations for the treatment of non-CNS infections.

In a dose-ranging study of smaller premature infants (670 to 1,890 g) in the first week of life, a dose of 20 mg/kg q12h by 15 to 30 minutes infusion was associated with mean peak and trough plasma imipenem concentrations of 43 mcg/mL and 1.7 mcg/mL after multiple doses, respectively. However, moderate accumulation of cilastatin in neonates may occur following multiple doses of Imipenem and Cilastatin for Injection (I.V.). The safety of this accumulation is unknown.

12.4 Microbiology

Mechanism of Action

Imipenem and Cilastatin for Injection (I.V.) is a combination of imipenem and cilastatin. The bactericidal activity of imipenem results from the inhibition of cell wall synthesis. Its greatest affinity is for penicillin binding proteins (PBPs) 1A, 1B, 2, 4, 5 and 6 of *Escherichia coli*, and 1A, 1B, 2, 4 and 5 of *Pseudomonas aeruginosa*. The lethal effect is related to binding to PBP 2 and PBP 1B.

Imipenem has a high degree of stability in the presence of beta-lactamases, both penicillinases and cephalosporinases produced by Gram-negative and Gram-positive bacteria. It is a potent inhibitor of beta-lactamases from certain Gram-negative bacteria which are inherently resistant to most beta-lactam antibacterials, e.g., *Pseudomonas aeruginosa*, *Serratia* spp., and *Enterobacter* spp.

Resistance

Imipenem is inactive *in vitro* against *Enterococcus faecium*, *Stenotrophomonas maltophilia* and some isolates of *Burkholderia cepacia*. Methicillin-resistant staphylococci should be reported as resistant to imipenem.

Interaction with Other Antimicrobials

In vitro tests show imipenem to act synergistically with aminoglycoside antibacterials against some isolates of *Pseudomonas aeruginosa*.

Antimicrobial Activity

Imipenem has been shown to be active against most isolates of the following microorganisms, both *in vitro* and in clinical infections [see *Indications and Usage (1)*].

Aerobic bacteria

Gram-positive bacteria

Enterococcus faecalis

Staphylococcus aureus

Staphylococcus epidermidis

Streptococcus agalactiae (Group B streptococci)

Streptococcus pneumoniae *Streptococcus pyogenes*

Gram-negative bacteria

Acinetobacter spp.

Citrobacter spp.
Enterobacter spp.
Escherichia coli
Gardnerella vaginalis
Haemophilus influenzae
Haemophilus parainfluenzae
Klebsiella spp.
Morganella morganii
Proteus vulgaris
Providencia rettgeri
Pseudomonas aeruginosa
Serratia spp., including *S. marcescens*

Anaerobic bacteria

Gram positive bacteria

Bifidobacterium spp.
Clostridium spp.
Eubacterium spp.
Peptococcus spp.
Peptostreptococcus spp.
Propionibacterium spp.

Gram-negative bacteria

Bacteroides spp. , including *B. fragilis*
Fusobacterium spp.

The following *in vitro* data are available, but their clinical significance is unknown. At least 90 percent of the following bacteria exhibit an *in vitro* minimum inhibitory concentration (MIC) less than or equal to the susceptible breakpoint for imipenem against isolates of similar genus or organism group. However, the efficacy of imipenem in treating clinical infections due to these bacteria has not been established in adequate and well-controlled clinical trials.

Aerobic bacteria

Gram-positive bacteria

Bacillus spp.
Listeria monocytogenes
Nocardia spp.
Staphylococcus saprophyticus
Group C streptococci
Group G streptococci
Viridans group streptococci

Gram-negative bacteria

Aeromonas hydrophila

Alcaligenes spp.

Capnocytophaga spp.

Haemophilus ducreyi

Neisseria gonorrhoeae

Pasteurella spp.

Providencia stuartii

Anaerobic bacteria

Prevotella bivia

Prevotella disiens

Prevotella melaninogenica

Veillonella spp.

Susceptibility Testing

For specific information regarding susceptibility test methods, interpretive criteria, and associated test methods and quality control standards recognized by FDA for this drug, please see: <https://www.fda.gov/STIC>.

13 NONCLINICAL TOXICOLOGY

13.1 Carcinogenesis, Mutagenesis, Impairment of Fertility

Long term studies in animals have not been performed to evaluate carcinogenic potential of imipenem/cilastatin. A variety of bacterial and mammalian tests were performed to evaluate genetic toxicity. The tests used were: V79 mammalian cell mutagenesis assay (cilastatin sodium alone and imipenem alone), Ames test (cilastatin sodium alone and imipenem alone), unscheduled DNA synthesis assay (imipenem/cilastatin sodium) and *in vivo* mouse cytogenetics test (imipenem/cilastatin sodium). None of these tests showed any evidence of genetic alterations.

Impairment of fertility or reproductive performance was not observed in male and female rats given imipenem/cilastatin at intravenous doses up to 80 mg/kg/day and at a subcutaneous dose of 320 mg/kg/day. In rats, a dose of 320 mg/kg/day was approximately equal to the highest recommended human dose based on body surface area.

16 HOW SUPPLIED/STORAGE AND HANDLING

16.1 How Supplied

Imipenem and Cilastatin for Injection, USP (I.V.) is supplied as a sterile powder mixture in single dose vials containing imipenem (anhydrous equivalent) and cilastatin sodium as follows:

Product No.	NDC No.		
PRX349025	63323-349-94	250 mg imipenem equivalent and 250 mg cilastatin equivalent and 10 mg sodium bicarbonate as a buffer	Packaged in carton of 25.
PRX342025	63323-322-94	500 mg imipenem equivalent and 500 mg cilastatin equivalent and 20 mg sodium bicarbonate as a buffer	Packaged in carton of 25.

16.2 Storage and Handling

Before Reconstitution:

Imipenem and Cilastatin for Injection, USP (I.V.) sterile powder should be stored at 20° to 25°C (68° to 77°F) [See USP Controlled Room Temperature].

17 PATIENT COUNSELING INFORMATION

- Advise patients that allergic reactions, including serious allergic reactions, could occur and that serious reactions require immediate treatment. They should report any previous hypersensitivity reactions to Imipenem and Cilastatin for Injection (I.V.), other carbapenems, beta-lactams or other allergens.
- Counsel patients that antibacterial drugs including Imipenem and Cilastatin for Injection (I.V.) should only be used to treat bacterial infections. They do not treat viral infections (e.g., the common cold). When Imipenem and Cilastatin for Injection (I.V.) is prescribed to treat a bacterial infection, patients should be told that although it is common to feel better early in the course of therapy, the medication should be taken exactly as directed. Skipping doses or not completing the full course of therapy may (1) decrease the effectiveness of the immediate treatment and (2) increase the likelihood that bacteria will develop resistance and will not be treatable by Imipenem and Cilastatin for Injection (I.V.) or other antibacterial drugs in the future.
- Counsel patients to inform their physician:
 - if they have central nervous system disorders such as stroke or history of seizures. Seizures have been reported during treatment with Imipenem and Cilastatin for Injection (I.V.) and with closely related antibacterial drugs.
 - if they are taking valproic acid or sodium valproate. Valproic acid concentrations in the blood may drop below the therapeutic range upon co-administration with Imipenem and Cilastatin for Injection (I.V.). If treatment with Imipenem and Cilastatin for Injection (I.V.) is necessary and continued, alternative or supplemental anti-convulsant medication to prevent and/or treat seizures may be needed.
- Advise patients that diarrhea is a common problem caused by antibacterial drugs and usually resolves when the drug is discontinued. Sometimes, frequent watery or bloody diarrhea may occur and may be a sign of a more serious intestinal infection. If severe watery or bloody diarrhea develops, patients should contact their healthcare provider.

PREMIERProRx® is a registered trademark of Premier Healthcare Alliance, L.P., used under license.

Manufactured for:

Fresenius Kabi

Lake Zurich, IL 60047

Made in Italy

www.fresenius-kabi.com/us

451360C

Revised: May 2019

PREMIERProRx®

PACKAGE LABEL- PRINCIPAL DISPLAY - IMPENEM AND CILASTATIN 250 mg Single Dose Vial Label

NDC 63323-349-94

Imipenem and Cilastatin for Injection, USP (I.V.)

250 mg/ 250 mg* per vial

* **Each vial contains:** Imipenem 250 mg (Anhydrous Equivalent) and Cilastatin Sodium equivalent to 250 mg of Cilastatin

**CAUTION: SINGLE DOSE VIAL
NOT FOR DIRECT INFUSION**

FOR I.V. USE ONLY

Rx only

NDC 63323-349-94
Imipenem and Cilastatin
for Injection, USP (I.V.)
250 mg/ 250 mg* per vial

*Each vial contains: Imipenem 250 mg (Anhydrous Equivalent) and Cilastatin Sodium equivalent to 250 mg of Cilastatin

**CAUTION: SINGLE DOSE VIAL
NOT FOR DIRECT INFUSION**

FOR I.V. USE ONLY **Rx only**
E107USIMC125502 PREMIER[®] Rx Made in Italy 4028868

Store dry material at 20° to 25°C (68° to 77°F) [See USP]. Sodium bicarbonate is added as a buffer. After suspension, vial contents must be transferred to 100 mL of infusion solution prior to intravenous infusion. After constitution as directed, the solution maintains satisfactory potency for 4 hours at room temperature or for 24 hours under refrigeration (5°C).

Mtd. for Fresenius Kabi Lab. Zurich, L. 60047

3 63323 34994 3

Lot Exp.

PACKAGE LABEL- PRINCIPAL DISPLAY - IMIPENEM AND CILASTATIN 250 mg Single Dose Vial Carton Panel

NDC 63323-349-94 PRX349025

Imipenem and Cilastatin for Injection, USP (I.V.)

250 mg/ 250 mg* per vial

Not to be divided

* **Each vial contains:** Imipenem 250 mg (Anhydrous Equivalent) and Cilastatin Sodium equivalent to 250 mg of Cilastatin.

Inactive ingredient: sodium bicarbonate 10 mg added to each vial as a buffer. The sodium content is approximately 18.8 mg (0.8 mEq).

After suspension, vial contents must be transferred to 100 mL of infusion solution prior to intravenous infusion.

CAUTION: SINGLE DOSE VIAL/FOR I.V. USE ONLY/NOT FOR DIRECT INFUSION

Rx only 1 Package (25 Single Dose Vials)

Imipenem and Cilastatin

for Injection, USP (I.V.)

250 mg / 250 mg* per vial

Not to be divided

*Each vial contains: Imipenem 250 mg (Anhydrous Equivalent) and Cilastatin Sodium equivalent to 250 mg of Cilastatin.

Inactive ingredient: sodium bicarbonate 10 mg added to each vial as a buffer.

The sodium content is approximately 18.8 mg (0.8 mEq).

After suspension, vial contents must be transferred to 100 mL of infusion solution prior to intravenous infusion.

Rx only

CAUTION: SINGLE DOSE VIAL / FOR I.V. USE ONLY / NOT FOR DIRECT INFUSION

1 PACKAGE (25 Single Dose Vials)

PREMIERProRx®

PACKAGE LABEL- PRINCIPAL DISPLAY - IMIPENEM AND CILASTATIN 500 mg Single Dose Vial Label

NDC 63323-322-94

Imipenem and Cilastatin for Injection, USP (I.V.)

500 mg/ 500 mg* per vial

* Each vial contains: Imipenem 500 mg (Anhydrous Equivalent) and Cilastatin Sodium equivalent to 500 mg of Cilastatin

CAUTION: SINGLE DOSE VIAL

NOT FOR DIRECT INFUSION

FOR I.V. USE ONLY

Rx only

NDC 63323-322-94
Imipenem and Cilastatin
 for Injection, USP (I.V.)
500 mg/ 500 mg* per vial

***Each vial contains:** Imipenem 500 mg (Anhydrous Equivalent) and Cilastatin Sodium equivalent to 500 mg of Cilastatin

**CAUTION: SINGLE DOSE VIAL
 NOT FOR DIRECT INFUSION**

FOR I.V. USE ONLY **Rx only**

E107USIMC125102 PREMIERFORX* Made in Italy 4028858

Store dry material at 20° to 25°C (68° to 77°F) [See USP]. Sodium bicarbonate is added as a buffer. After suspension, vial contents must be transferred to 100 mL of infusion solution prior to intravenous infusion. After constitution as directed, the solution maintains satisfactory potency for 4 hours at room temperature or for 24 hours under refrigeration (5°C).

Mkt. for: Fresenius Kabi Lab. Zurich, L 60047

3 63323 32294 6

Lot Exp.

PACKAGE LABEL- PRINCIPAL DISPLAY - IMIPENEM AND CILASTATIN 500 mg Single Dose Vial Carton Panel

NDC 63323-322-94 PRX342025
Imipenem and Cilastatin for Injection, USP (I.V.)
500 mg/ 500 mg* per vial
 Not to be divided

***Each vial contains:** Imipenem 500 mg (Anhydrous Equivalent) and Cilastatin Sodium equivalent to 500 mg of Cilastatin.

Inactive ingredient: sodium bicarbonate 20 mg added to each vial as a buffer. The sodium content is approximately 37.5 mg (1.6 mEq).

After suspension, vial contents must be transferred to 100 mL of infusion solution prior to intravenous infusion.

CAUTION: SINGLE DOSE VIAL/FOR I.V. USE ONLY/NOT FOR DIRECT INFUSION
Rx only 1 Package (25 Single Dose Vials)

Imipenem and Cilastatin

for Injection, USP (I.V.)

500 mg / 500 mg* per vial

Not to be divided

*Each vial contains: Imipenem 500 mg (Anhydrous Equivalent) and Cilastatin Sodium equivalent to 500 mg of Cilastatin.

Inactive ingredient: sodium bicarbonate 20 mg added to each vial as a buffer.

The sodium content is approximately 37.5 mg (1.6 mEq).

After suspension, vial contents must be transferred to 100 mL of infusion solution prior to intravenous infusion.

Rx only

CAUTION: SINGLE DOSE VIAL / FOR I.V. USE ONLY / NOT FOR DIRECT INFUSION

1 PACKAGE (25 Single Dose Vials)

PREMIER ProRx®

IMIPENEM AND CILASTATIN

imipenem and cilastatin sodium injection, powder, for solution

Product Information

Product Type	HUMAN PRESCRIPTION DRUG	Item Code (Source)	NDC:63323-349
Route of Administration	INTRAVENOUS		

Active Ingredient/Active Moiety

Ingredient Name	Basis of Strength	Strength
IMIPENEM (UNII: 71OTZ9ZE0A) (IMIPENEM ANHYDROUS - UNII:Q20IM7HE75)	IMIPENEM ANHYDROUS	250 mg in 20 mL
CILASTATIN SODIUM (UNII: 5428WXZ74M) (CILASTATIN - UNII:141A6AMN38)	CILASTATIN	250 mg in 20 mL

Inactive Ingredients

Ingredient Name	Strength
SODIUM BICARBONATE (UNII: 8MDF5V39QO)	10 mg in 20 mL

Packaging

#	Item Code	Package Description	Marketing Start Date	Marketing End Date
1	NDC:63323-349-94	25 in 1 CARTON	01/03/2012	
1		20 mL in 1 VIAL, SINGLE-DOSE; Type 0: Not a Combination Product		

Marketing Information

Marketing Category	Application Number or Monograph Citation	Marketing Start Date	Marketing End Date
ANDA	ANDA090577	01/03/2012	

IMIPENEM AND CILASTATIN

imipenem and cilastatin sodium injection, powder, for solution

Product Information

Product Type	HUMAN PRESCRIPTION DRUG	Item Code (Source)	NDC:63323-322
Route of Administration	INTRAVENOUS		

Active Ingredient/Active Moiety

Ingredient Name	Basis of Strength	Strength
IMIPENEM (UNII: 71OTZ9ZE0A) (IMIPENEM ANHYDROUS - UNII:Q20IM7HE75)	IMIPENEM ANHYDROUS	500 mg in 20 mL
CILASTATIN SODIUM (UNII: 5428WXX74M) (CILASTATIN - UNII:141A6AMN38)	CILASTATIN	500 mg in 20 mL

Inactive Ingredients

Ingredient Name	Strength
SODIUM BICARBONATE (UNII: 8MDF5V39QO)	20 mg in 20 mL

Packaging

#	Item Code	Package Description	Marketing Start Date	Marketing End Date
1	NDC:63323-322-94	25 in 1 CARTON	01/03/2012	
1		20 mL in 1 VIAL, SINGLE-DOSE; Type 0: Not a Combination Product		

Marketing Information

Marketing Category	Application Number or Monograph Citation	Marketing Start Date	Marketing End Date
ANDA	ANDA090577	01/03/2012	

Labeler - Fresenius Kabi USA, LLC (608775388)

Establishment

Name	Address	ID/FEI	Business Operations
ACS Dobfar S.p.A.		439962157	manufacture(63323-322, 63323-349)

Establishment

Name	Address	ID/FEI	Business Operations
Zambon Switzerland Ltd		481761344	manufacture(63323-322, 63323-349)

Revised: 7/2019

Fresenius Kabi USA, LLC