

**PPE GO KIT- ethyl alcohol**  
**Global Genesis Partners Llc**

*Disclaimer: Most OTC drugs are not reviewed and approved by FDA, however they may be marketed if they comply with applicable regulations and policies. FDA has not evaluated whether this product complies.*

-----

**PPE GO KIT**

**Color Element Hand Sanitizer with Moisturizers and Vitamin E**

***Drug Facts***

***Active ingredient***

Ethyl Alcohol 75% v/v

***Purpose***

Antiseptic

***Uses***

- For hand washing to help reduce bacteria that potentially can cause disease. Recommended for repeated use. For use when soap and water are not available.

***Warnings***

**For external use only.**

**Flammable. Keep away from fire and flame**

**When using this product** do not use in or near the eyes, ears and mouth. In case of contact with eyes, rinse eyes thoroughly with water.

**Stop use and ask a doctor** if irritation or rash appears on the skin.

**Keep out of reach of children.** If swallowed, get medical help or contact a Poison Control Center right away.

***Directions***

- Place enough product on hands to cover all surfaces. Rub hands together until dry.
- Children under 6 years of age should be supervised by adult when applying this product.
- Do not use on children less than 2 months of age or on open skin wounds.

***Other information***

- Store between 15-30°C (59-86°F)
- May discolor some fabrics or surfaces

***Inactive ingredients***

Water, Glycerin, Squalane, Panthenol, Inulin, Sodium Hyaluronate, Fructose, Tocopheryl Acetate, Acrylates/C10-30 Alkyl Acrylate Crosspolymer, Aminomethyl Propanol.

**Color Element Antiseptic Hand wipes saturated with 75% Ethyl Alcohol**

## ***Drug Facts***

### ***Active ingredient***

Ethyl alcohol 75%

### ***Purpose***

Antiseptic

### ***Use***

For hand washing to decrease bacteria on the skin

### ***Warnings***

**For external use only**

**Flammable, keep away from fire or flame.**

**Do not use** • in the eyes

**Stop use and ask a doctor if**

- irritation and redness develop
- condition persists for more than 72 hours

**Keep out of reach of children.**

If swallowed, get medical help or contact a Poison Control Center right away.

### ***Directions***

wet hands thoroughly with wipe and allow to dry without wiping

### ***Inactive ingredients***

Purified water

### ***Questions or Comments?***

212-551-2657

## **PPE GO KIT™**

### ***Go Live Your Life***

**2 protective face masks 3-ply pleated (non-medical)**

**4 hand sanitizer packets 75% alcohol + moisturizers**

**2 antibacterial wipes 75% alcohol**

**3-Ply Disposable Protective Face mask (Non-Medical)**

- Inner Layer: Non-woven fabric
- Middle Layer: Non-woven Meltblown filter
- Outer Layer: Non-woven fabric

**How to wear:**

- 1) Lay the mask flat
- 2) Pull the mask with both hands toward the face
- 3) Hold the mask with one hand and pull the ear loops each ear
- 4) Pull upper and bottom edge of the mask to cover the area from below your eyes to under chin, push the nosepiece inward with your fingers to conform to the shape of your nose

Specifications: 17.5 cm x 9.5 cm

Standard: T/CTCA 7-2019

Store in a cool and dry place

**Caution:**

- 1) This product is a single-use protective mask to filter out pollen, bacteria and to block contaminants from oral and nasal exhalation. It is not suitable for infants and children.
- 2) The mask is for single use only and can be worn 4-6 hours
- 3) In case of discomfort or adverse reactions, discontinue use.
- 4) Please store masks in a clean, cool and dry place after opening and use as soon as possible.

**hand sanitizer packets 75% alcohol + moisturizers****Hand Sanitizer**

- 75% Alcohol + Moisturizers
- Kills 99.9% of harmful germs
- Smooth Gel Product
- 2 ml (.07 fl oz)
- Registered FDA Brand

**How to use:**

- 1) Tear off top to dispense.
- 2) Rub hands vigorously until dry.

**antibacterial wipes 75% alcohol****Antibacterial Wipes**

- Antibacterial single use wipe
- Kills 99.9% of harmful germs
- For hand washing to reduce bacteria.

**How to use:**

- 1) Tear off top of packet.
- 2) Wet hand thoroughly with wipe.
- 3) Use until dry to touch.

Global Genesis Partners LLC

75 Executive Drive, Suite 106

Aurora, IL 60504

866-466-5487

**[www.getgocare.com](http://www.getgocare.com)**

Made in China

# Packaging

## KIT COMPONENTS LABEL



<b>Drug Facts</b>	
<b>Active ingredient</b>	<b>Purpose</b>
Ethyl alcohol 75% .....	Antiseptic
<b>Use</b>	
For hand washing to decrease bacteria on the skin	
<b>Warnings</b>	
For external use only	
Flammable, keep away from fire or flame.	
Do not use <input type="checkbox"/> in the eyes	
Stop use and ask a doctor if	
<input type="checkbox"/> irritation and redness develop	
<input type="checkbox"/> condition persists for more than 72 hours	
Keep out of reach of children.	
If swallowed, get medical help or contact a Poison Control Center right away.	
<b>Directions</b>	
wet hands thoroughly with wipe and allow to dry without wiping	
<b>Inactive ingredients</b>	
Purified water	
<b>Questions or Comments?</b>	
212-551-2657	

<b>Drug Facts</b>	
<b>Active ingredient</b>	<b>Purpose</b>
Ethyl alcohol 75% .....	Antiseptic
<b>Use</b>	
For hand washing to decrease bacteria on the skin	
<b>Warnings</b>	
For external use only	
Flammable, keep away from fire or flame.	
Do not use <input type="checkbox"/> in the eyes	
Stop use and ask a doctor if	
<input type="checkbox"/> irritation and redness develop	
<input type="checkbox"/> condition persists for more than 72 hours	
Keep out of reach of children.	
If swallowed, get medical help or contact a Poison Control Center right away.	
<b>Directions</b>	
wet hands thoroughly with wipe and allow to dry without wiping	
<b>Inactive ingredients</b>	
Purified water	
<b>Questions or Comments?</b>	
212-551-2657	

COLOR ELEMENT

COLOR ELEMENT

## Antiseptic hand wipes

12X18CM

Saturated with 75% ethyl alcohol

FOR EXTERNAL USE ONLY

## Antiseptic hand wipes

12X18CM

Saturated with 75% ethyl alcohol

FOR EXTERNAL USE ONLY

### KIT LABEL

travel + home + work + school

# PPE GO KIT™

GO Live Your Life



**2** protective  
face masks

3-ply pleated (non-medical)



**4** hand sanitizer  
packets

75% alcohol + moisturizers



## 2 antibacterial wipes

75% alcohol



### protective face masks 3-ply pleated (non-medical)

#### 3-Ply Disposable Protective Face mask (Non-Medical)

- Inner Layer: Non-woven fabric
- Middle Layer: Non-woven Meltblown filter
- Outer Layer: Non-woven fabric

#### How to wear:

- 1) Lay the mask flat
- 2) Pull the mask with both hands toward the face
- 3) Hold the mask with one hand and pull the ear loops over each ear
- 4) Pull upper and bottom edge of the mask to cover the area from below your eyes to under chin, push the nosepiece inward with your fingers to conform to the shape of your nose

Specifications: 17.5 cm x 9.5 cm  
Standard: T/CTCA 7-2019

Store in a cool and dry place

#### Caution:

- 1) This product is a single-use protective mask to filter out pollen, bacteria and to block contaminants from oral and nasal exhalation. It is not suitable for infants and children.
- 2) The mask is for single use only and can be worn 4-6 hours
- 3) In case of discomfort or adverse reactions, discontinue use.
- 4) Please store masks in a clean, cool and dry place after opening and use as soon as possible.

### hand sanitizer packets

75% alcohol + moisturizers

#### Hand Sanitizer

- 75% Alcohol + Moisturizers
- Kills 99.9% of harmful germs
- Smooth Gel Product
- 2 ml (.07 fl oz)
- Registered FDA Brand

#### How to use:

- 1) Tear off top to dispense.
- 2) Rub hands vigorously until dry.

### antibacterial wipes

75% alcohol

#### Antibacterial Wipes

- Antibacterial single use wipe
- Kills 99.9% of harmful germs
- For hand washing to reduce bacteria.

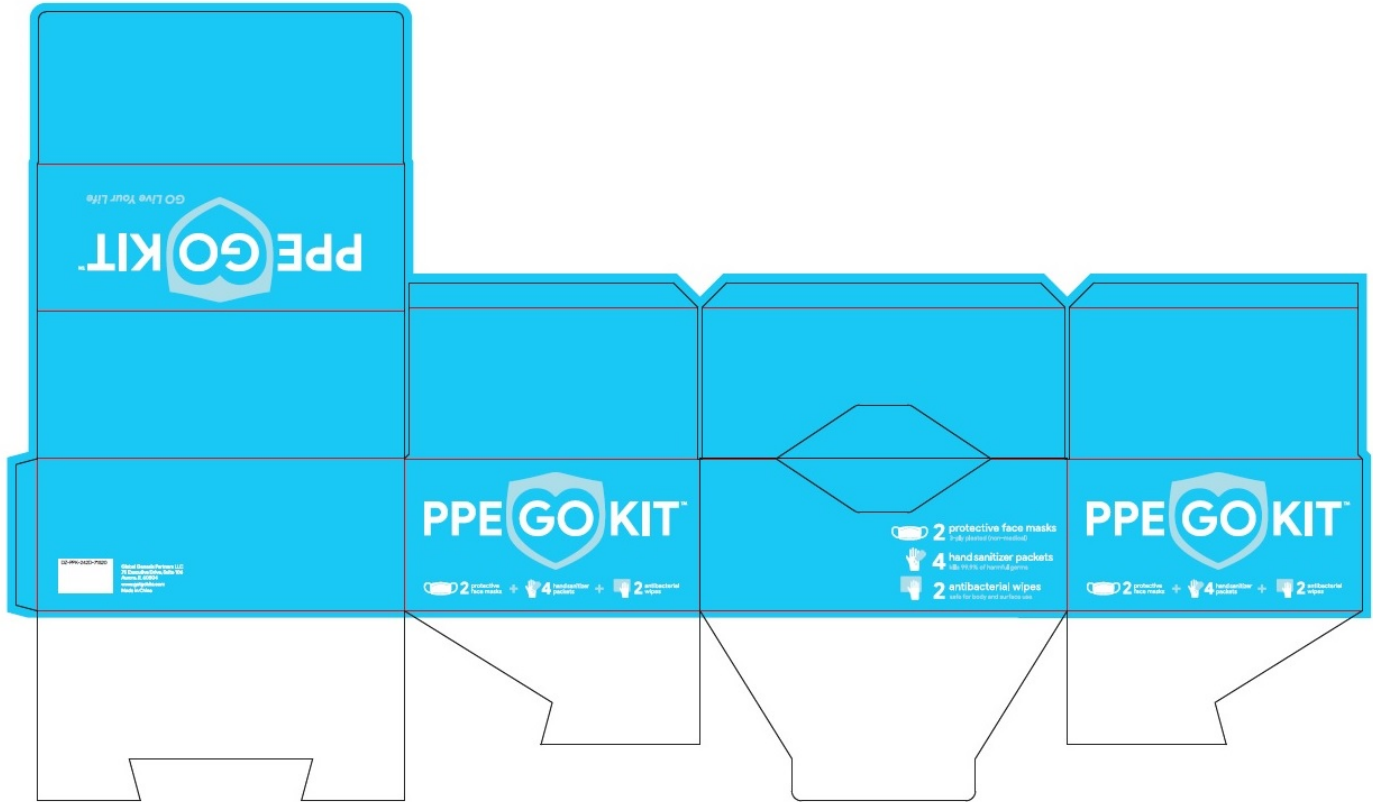
#### How to use:

- 1) Tear off top of packet.
- 2) Wet hand thoroughly with wipe.
- 3) Use until dry to touch.

DZ-PPK-2421-80620



Global Genesis Partners LLC  
 75 Executive Drive, Suite 106  
 Aurora, IL 60504  
 866-466-5487  
**www.getgocare.com**  
 Made in China



## PPE GO KIT

ethyl alcohol kit

### Product Information

<b>Product Type</b>	HUMAN OTC DRUG	<b>Item Code (Source)</b>	NDC:79 110-151
---------------------	----------------	---------------------------	----------------

### Packaging

#	Item Code	Package Description	Marketing Start Date	Marketing End Date
1	NDC:79 110-151-30	30 in 1 KIT	08/10/2020	
1	NDC:79 110-151-42	1 in 1 PACKAGE; Type 0: Not a Combination Product		

### Quantity of Parts

Part #	Package Quantity	Total Product Quantity
Part 1	4 BAG	8 mL
Part 2	2 PATCH	8.26 mL

## Part 1 of 2

### COLOR ELEMENT HAND SANITIZER WITH MOISTURIZERS AND VITAMIN E

alcohol gel

#### Product Information

Item Code (Source)	NDC:74934-001
Route of Administration	TOPICAL

#### Active Ingredient/Active Moiety

Ingredient Name	Basis of Strength	Strength
ALCOHOL (UNII: 3K9958V90M) (ALCOHOL - UNII:3K9958V90M)	ALCOHOL	0.75 mL in 1 mL

#### Inactive Ingredients

Ingredient Name	Strength
WATER (UNII: 059QF0KO0R)	
GLYCERIN (UNII: PDC6A3C0OX)	
SQUALANE (UNII: GW89575KF9)	
PANTHENOL (UNII: WV9CM0O67Z)	
INULIN (UNII: JOS53KRJ01)	
HYALURONATE SODIUM (UNII: YSE9PPT4TH)	
FRUCTOSE (UNII: 6YSS42VSEV)	
.ALPHA.-TOCOPHEROL ACETATE (UNII: 9E8X80D2L0)	
AMINOMETHYLPROPANOL (UNII: LU49E6626Q)	

#### Packaging

#	Item Code	Package Description	Marketing Start Date	Marketing End Date
1		2 mL in 1 BAG; Type 0: Not a Combination Product		

#### Marketing Information

Marketing Category	Application Number or Monograph Citation	Marketing Start Date	Marketing End Date
OTC monograph not final	part333E	04/14/2020	

## Part 2 of 2

### COLOR ELEMENT ANTISEPTIC HAND WIPES SATURATED WITH 75 ETHYL ALCOHOL



alcohol cloth

### Product Information

**Item Code (Source)** NDC:74934-024

**Route of Administration** TOPICAL

### Active Ingredient/Active Moiety

Ingredient Name	Basis of Strength	Strength
ALCOHOL (UNII: 3K9958 V90M) (ALCOHOL - UNII:3K9958 V90M)	ALCOHOL	0.75 mL in 1 mL

### Inactive Ingredients

Ingredient Name	Strength
WATER (UNII: 059QF0KO0R)	

### Packaging

#	Item Code	Package Description	Marketing Start Date	Marketing End Date
1		1 in 1 BOX		
1		4.13 mL in 1 PATCH; Type 2: Prefilled Drug Delivery Device/System (syringe, patch, etc.)		

### Marketing Information

Marketing Category	Application Number or Monograph Citation	Marketing Start Date	Marketing End Date
OTC monograph not final	part333E	06/08/2020	

### Marketing Information

Marketing Category	Application Number or Monograph Citation	Marketing Start Date	Marketing End Date
OTC monograph not final	part333E	08/10/2020	

**Labeler** - Global Genesis Partners Llc (131394303)