

**BUPRENORPHINE AND NALOXONE- buprenorphine hydrochloride, naloxone hydrochloride film, soluble**  
**Indivior Inc.**

-----

**HIGHLIGHTS OF PRESCRIBING INFORMATION**

**These highlights do not include all the information needed to use BUPRENORPHINE AND NALOXONE SUBLINGUAL FILM safely and effectively. See full prescribing information for buprenorphine and naloxone sublingual film.**

**BUPRENORPHINE AND NALOXONE SUBLINGUAL FILM, for sublingual or buccal use CIII**  
**Initial U.S. Approval: 2002**

----- **RECENT MAJOR CHANGES** -----

Warnings and Precautions (5.2)

10/2019

----- **INDICATIONS AND USAGE** -----

Buprenorphine and naloxone sublingual film contains buprenorphine, a partial $\mu$ opioid agonist, and naloxone, an opioid antagonist, and is indicated for treatment of opioid dependence. (1)

Buprenorphine and naloxone sublingual film should be used as part of a complete treatment plan that includes counseling and psychosocial support. (1)

----- **DOSAGE AND ADMINISTRATION** -----

- Prescription use of this product is limited under the Drug Addiction Treatment Act. (2.1)
- Administer buprenorphine and naloxone sublingual film as a single daily dose. (2.2)
- To avoid precipitating withdrawal, induction with buprenorphine and naloxone sublingual film should be undertaken when objective and clear signs of withdrawal are evident and buprenorphine and naloxone sublingual film should be administered in divided doses when used as initial treatment. (2.3)
- For patients dependent on short-acting opioid products who are in opioid withdrawal; on Day 1, administer up to 8 mg/2 mg buprenorphine and naloxone sublingual film (in divided doses). On Day 2, administer up to 16 mg/4 mg of buprenorphine and naloxone sublingual film as a single dose. (2.3)
- For patients dependent on methadone or long-acting opioid products, induction onto sublingual buprenorphine monotherapy is recommended on Days 1 and 2 of treatment. (2.3)
- For maintenance treatment, the target dosage of buprenorphine and naloxone sublingual film is usually 16 mg/4 mg as a single daily dose. (2.4)
- Sublingual Administration: Place one film under the tongue, close to the base on the left or right side, and allow to completely dissolve.  
Buccal Administration: Place one film on the inside of the left or right cheek and allow to completely dissolve. (2.5)
- Buprenorphine and naloxone sublingual film must be administered whole. Do not cut, chew, or swallow buprenorphine and naloxone sublingual film (2.5)
- When discontinuing treatment, gradually taper to avoid signs and symptoms of withdrawal. (2.8)

----- **DOSAGE FORMS AND STRENGTHS** -----

Sublingual film:

- buprenorphine 2 mg/ naloxone 0.5 mg,
- buprenorphine 4 mg/ naloxone 1 mg,
- buprenorphine 8 mg/ naloxone 2 mg and
- buprenorphine 12 mg/ naloxone 3 mg. (3)

----- **CONTRAINDICATIONS** -----

Hypersensitivity to buprenorphine or naloxone. (4)

----- **WARNINGS AND PRECAUTIONS** -----

- **Addiction, Abuse, and Misuse:** Buprenorphine can be abused in a similar manner to other opioids. Monitor patients for conditions indicative of diversion or progression of opioid dependence and addictive behaviors. Multiple refills should not be prescribed early in treatment or without appropriate patient follow-up visits. (5.1)
- **Respiratory Depression:** Life-threatening respiratory depression and death have occurred in association with buprenorphine use. Warn patients of the potential danger of self-administration of benzodiazepines or other CNS depressants while under treatment with buprenorphine and naloxone sublingual film. (5.2, 5.3)
- **Unintentional Pediatric Exposure:** Store buprenorphine and naloxone sublingual film safely out of the sight and reach of

- children. Buprenorphine can cause severe, possibly fatal, respiratory depression in children. (5.4)
- **Neonatal Opioid Withdrawal Syndrome:** Neonatal opioid withdrawal syndrome (NOWS) is an expected and treatable outcome of prolonged use of opioids during pregnancy (5.5)
  - **Adrenal Insufficiency:** If diagnosed, treat with physiologic replacement of corticosteroids, and wean patient off of the opioid. (5.6)
  - **Risk of Opioid Withdrawal with Abrupt Discontinuation:** If treatment is temporarily interrupted or discontinued, monitor patients for withdrawal and treat appropriately. (5.7)
  - **Risk of Hepatitis, Hepatic Events:** Monitor liver function tests prior to initiation and during treatment and evaluate suspected hepatic events. (5.8)
  - **Precipitation of Opioid Withdrawal Signs and Symptoms:** An opioid withdrawal syndrome is likely to occur with parenteral misuse of buprenorphine and naloxone sublingual film by individuals physically dependent on full opioid agonists, or by sublingual or buccal administration before the agonist effects of other opioids have subsided. (5.10)
  - **Risk of Overdose in Opioid-Naïve Patients:** buprenorphine and naloxone sublingual film is not appropriate as an analgesic. There have been reported deaths of opioid naïve individuals who received a 2 mg sublingual dose. (5.11)

----- **ADVERSE REACTIONS** -----

Adverse events commonly observed with the sublingual/buccal administration of the buprenorphine and naloxone sublingual film are oral hypoesthesia, glossodynia, oral mucosal erythema, headache, nausea, vomiting, hyperhidrosis, constipation, signs and symptoms of withdrawal, insomnia, pain, and peripheral edema. (6)

**To report SUSPECTED ADVERSE REACTIONS, contact Indivior Inc. at 1-877-782-6966 or FDA at 1-800-FDA-1088 or [www.fda.gov/medwatch](http://www.fda.gov/medwatch).**

----- **DRUG INTERACTIONS** -----

- **Benzodiazepines:** Use caution in prescribing buprenorphine and naloxone sublingual film for patients receiving benzodiazepines or other CNS depressants and warn patients against concomitant self-administration/misuse. (7)
- **CYP3A4 Inhibitors and Inducers:** Monitor patients starting or ending CYP3A4 inhibitors or inducers for potential over- or under- dosing. (7)
- **Antiretrovirals:** Patients who are on chronic buprenorphine treatment should have their dose monitored if NNRTIs are added to their treatment regimen. Monitor patients taking buprenorphine and atazanavir with and without ritonavir. Dose reduction of buprenorphine may be warranted (7).
- **Serotonergic Drugs:** Concomitant use may result in serotonin syndrome. Discontinue buprenorphine and naloxone sublingual film if serotonin syndrome is suspected. (7)

----- **USE IN SPECIFIC POPULATIONS** -----

- **Lactation:** Buprenorphine passes into mother's milk. (8.2)
- **Geriatric Patients:** Monitor for sedation and respiratory depression. (8.5)
- **Moderate or Severe Hepatic Impairment:** Buprenorphine/naloxone products are not recommended in patients with severe hepatic impairment and may not be appropriate for patients with moderate hepatic impairment. (8.6)

See 17 for **PATIENT COUNSELING INFORMATION** and **Medication Guide**.

**Revised: 10/2019**

**FULL PRESCRIBING INFORMATION: CONTENTS\***

**1 INDICATIONS AND USAGE**

**2 DOSAGE AND ADMINISTRATION**

2.1 Drug Addiction and Treatment Act

2.2 Important Dosage and Administration Information

2.3 Induction

2.4 Maintenance

2.5 Method of Administration

2.6 Clinical Supervision

2.7 Unstable Patients

2.8 Discontinuing Treatment

2.9 Switching Between Buprenorphine or Buprenorphine and Naloxone Sublingual Tablets and Buprenorphine and Naloxone Sublingual Film

2.10 Switching Between Buprenorphine and Naloxone Sublingual Film Strengths

2.11 Switching Between Sublingual and Buccal Sites of Administration

### **3 DOSAGE FORMS AND STRENGTHS**

### **4 CONTRAINDICATIONS**

### **5 WARNINGS AND PRECAUTIONS**

5.1 Addiction, Abuse, and Misuse

5.2 Risk of Life-Threatening Respiratory and Central Nervous System (CNS) Depression

5.3 Managing Risks from Concomitant Use of Benzodiazepines or Other CNS Depressants

5.4 Unintentional Pediatric Exposure

5.5 Neonatal Opioid Withdrawal Syndrome

5.6 Adrenal Insufficiency

5.7 Risk of Opioid Withdrawal with Abrupt Discontinuation

5.8 Risk of Hepatitis, Hepatic Events

5.9 Hypersensitivity Reactions

5.10 Precipitation of Opioid Withdrawal Signs and Symptoms

5.11 Risk of Overdose in Opioid Naïve Patients

5.12 Use in Patients With Impaired Hepatic Function

5.13 Impairment of Ability to Drive or Operate Machinery

5.14 Orthostatic Hypotension

5.15 Elevation of Cerebrospinal Fluid Pressure

5.16 Elevation of Intracholedochal Pressure

5.17 Effects in Acute Abdominal Conditions

### **6 ADVERSE REACTIONS**

6.1 Clinical Trials Experience

6.2 Postmarketing Experience

### **7 DRUG INTERACTIONS**

### **8 USE IN SPECIFIC POPULATIONS**

8.1 Pregnancy

8.2 Lactation

8.3 Females and Males of Reproductive Potential

8.4 Pediatric Use

8.5 Geriatric Use

8.6 Hepatic Impairment

8.7 Renal Impairment

### **9 DRUG ABUSE AND DEPENDENCE**

9.1 Controlled Substance

9.2 Abuse

9.3 Dependence

### **10 OVERDOSAGE**

### **11 DESCRIPTION**

### **12 CLINICAL PHARMACOLOGY**

12.1 Mechanism of Action

12.2 Pharmacodynamics

12.3 Pharmacokinetics

### **13 NONCLINICAL TOXICOLOGY**

13.1 Carcinogenesis, Mutagenesis, Impairment of Fertility

### **16 HOW SUPPLIED / STORAGE AND HANDLING**

### **17 PATIENT COUNSELING INFORMATION**

Storage and Disposal

Safe Use

\* Sections or subsections omitted from the full prescribing information are not listed.

---

## **FULL PRESCRIBING INFORMATION**

### **1 INDICATIONS AND USAGE**

Buprenorphine and naloxone sublingual film is indicated for treatment of opioid dependence. Buprenorphine and naloxone sublingual film should be used as part of a complete treatment plan that includes counseling and psychosocial support.

### **2 DOSAGE AND ADMINISTRATION**

#### **2.1 Drug Addiction and Treatment Act**

Under the Drug Addiction Treatment Act (DATA) codified at 21 U.S.C. 823(g), prescription use of this product in the treatment of opioid dependence is limited to healthcare providers who meet certain qualifying requirements, and who have notified the Secretary of Health and Human Services (HHS) of their intent to prescribe this product for the treatment of opioid dependence and have been assigned a unique identification number that must be included on every prescription.

#### **2.2 Important Dosage and Administration Information**

Buprenorphine and naloxone sublingual film is administered sublingually or buccally as a single daily dose.

Medication should be prescribed in consideration of the frequency of visits. Provision of multiple refills is not advised early in treatment or without appropriate patient follow-up visits.

#### **2.3 Induction**

Prior to induction, consideration should be given to the type of opioid dependence (i.e., long- or short-acting opioid products), the time since last opioid use, and the degree or level of opioid dependence.

##### Patients dependent on heroin or other short-acting opioid products

Patients dependent on heroin or other short-acting opioid products may be inducted with either buprenorphine and naloxone sublingual film or with sublingual buprenorphine monotherapy. At treatment initiation, the first dose of buprenorphine and naloxone sublingual film should be administered when objective signs of moderate opioid withdrawal appear, not less than six hours after the patient last used opioids.

It is recommended that an adequate treatment dose, titrated to clinical effectiveness, be achieved as rapidly as possible. In some studies, a too-gradual induction over several days led to a high rate of drop-out of buprenorphine patients during the induction period.

On Day 1, an induction dosage of up to 8 mg/2 mg buprenorphine and naloxone sublingual film is recommended. Clinicians should start with an initial dose of 2 mg/0.5 mg or 4 mg/1 mg buprenorphine/naloxone and may titrate upwards in 2 or 4 mg increments of buprenorphine, at approximately 2-hour intervals, under supervision, to 8 mg/2 mg buprenorphine/naloxone based on the control of acute withdrawal symptoms.

On Day 2, a single daily dose of up to 16 mg/4 mg buprenorphine and naloxone sublingual film is recommended.

Because the exposure to naloxone is somewhat higher after buccal than after sublingual administration, it is recommended that the sublingual site of administration be used during induction to minimize exposure to naloxone, to reduce the risk of precipitated withdrawal.

##### Patients dependent on methadone or long-acting opioid products

Patients dependent upon methadone or long-acting opioid products may be more susceptible to

precipitated and prolonged withdrawal during induction than those on short-acting opioid products.

Buprenorphine/naloxone combination products have not been evaluated in adequate and well-controlled studies for induction in patients who are physically dependent on long-acting opioid products, and the naloxone in these combination products is absorbed in small amounts by the sublingual route and could cause worse precipitated and prolonged withdrawal. For this reason, buprenorphine monotherapy is recommended in patients taking long-acting opioids when used according to approved administration instructions. Following induction, the patient may then be transitioned to once-daily buprenorphine and naloxone sublingual film.

## 2.4 Maintenance

- For maintenance, buprenorphine and naloxone sublingual film may be administered buccally or sublingually.
- The dosage of buprenorphine and naloxone sublingual film from Day 3 onwards should be progressively adjusted in increments/decrements of 2 mg/0.5 mg or 4 mg/1 mg buprenorphine/naloxone to a level that holds the patient in treatment and suppresses opioid withdrawal signs and symptoms.
- After treatment induction and stabilization, the maintenance dose of buprenorphine and naloxone sublingual film is generally in the range of 4 mg/1 mg buprenorphine/naloxone to 24 mg/6 mg buprenorphine/naloxone per day depending on the individual patient and clinical response. The recommended target dosage of buprenorphine and naloxone sublingual film during maintenance is 16 mg/4 mg buprenorphine/naloxone/day as a single daily dose. Dosages higher than 24 mg/6 mg daily have not been demonstrated to provide a clinical advantage.
- When determining the prescription quantity for unsupervised administration, consider the patient's level of stability, the security of his or her home situation, and other factors likely to affect the ability to manage supplies of take-home medication.
- There is no maximum recommended duration of maintenance treatment. Patients may require treatment indefinitely and should continue for as long as patients are benefiting and the use of buprenorphine and naloxone sublingual film contributes to the intended treatment goals.

## 2.5 Method of Administration

Buprenorphine and naloxone sublingual film must be administered whole. Do not cut, chew, or swallow sublingual film. Advise patients not to eat or drink anything until the film is completely dissolved.

### Sublingual Administration

Place one film under the tongue, close to the base on the left or right side. If an additional film is necessary to achieve the prescribed dose, place an additional film sublingually on the opposite side from the first film. Place the film in a manner to minimize overlapping as much as possible. The film must be kept under the tongue until the film is completely dissolved. If a third film is necessary to achieve the prescribed dose, place it under the tongue on either side after the first 2 films have dissolved.

### Buccal Administration

Place one film on the inside of the right or left cheek. If an additional film is necessary to achieve the prescribed dose, place an additional film on the inside of the opposite cheek. The film must be kept on the inside of the cheek until the film is completely dissolved. If a third film is necessary to achieve the prescribed dose, place it on the inside of the right or left cheek after the first two films have dissolved.

Buprenorphine and naloxone sublingual film should NOT be moved after placement.

To ensure consistency in bioavailability, patients should follow the same manner of dosing with continued use of the product. Proper administration technique should be demonstrated to the patient.

## 2.6 Clinical Supervision

Treatment should be initiated with supervised administration, progressing to unsupervised administration as the patient's clinical stability permits. Buprenorphine and naloxone sublingual film is subject to diversion and abuse. When determining the prescription quantity for unsupervised administration, consider the patient's level of stability, the security of his or her home situation, and other factors likely to affect the ability to manage supplies of take-home medication.

Ideally patients should be seen at reasonable intervals (e.g., at least weekly during the first month of treatment) based upon the individual circumstances of the patient. Medication should be prescribed in consideration of the frequency of visits. Provision of multiple refills is not advised early in treatment or without appropriate patient follow-up visits. Periodic assessment is necessary to determine compliance with the dosing regimen, effectiveness of the treatment plan, and overall patient progress.

Once a stable dosage has been achieved and patient assessment (e.g., urine drug screening) does not indicate illicit drug use, less frequent follow-up visits may be appropriate. A once-monthly visit schedule may be reasonable for patients on a stable dosage of medication who are making progress toward their treatment objectives. Continuation or modification of pharmacotherapy should be based on the healthcare provider's evaluation of treatment outcomes and objectives such as:

1. Absence of medication toxicity.
2. Absence of medical or behavioral adverse effects.
3. Responsible handling of medications by the patient.
4. Patient's compliance with all elements of the treatment plan (including recovery-oriented activities, psychotherapy, and/or other psychosocial modalities).
5. Abstinence from illicit drug use (including problematic alcohol and/or benzodiazepine use).

If treatment goals are not being achieved, the healthcare provider should re-evaluate the appropriateness of continuing the current treatment.

## **2.7 Unstable Patients**

Healthcare providers will need to decide when they cannot appropriately provide further management for particular patients. For example, some patients may be abusing or dependent on various drugs, or unresponsive to psychosocial intervention such that the healthcare provider does not feel that he/she has the expertise to manage the patient. In such cases, the healthcare provider may want to assess whether to refer the patient to a specialist or more intensive behavioral treatment environment. Decisions should be based on a treatment plan established and agreed upon with the patient at the beginning of treatment.

Patients who continue to misuse, abuse, or divert buprenorphine products or other opioids should be provided with, or referred to, more intensive and structured treatment.

## **2.8 Discontinuing Treatment**

The decision to discontinue therapy with buprenorphine and naloxone sublingual film after a period of maintenance should be made as part of a comprehensive treatment plan. Advise patients of the potential to relapse to illicit drug use following discontinuation of opioid agonist/partial agonist medication-assisted treatment. Taper patients to reduce the occurrence of opioid withdrawal signs and symptoms [*See Warnings and Precautions (5.7)*].

## **2.9 Switching Between Buprenorphine or Buprenorphine and Naloxone Sublingual Tablets and Buprenorphine and Naloxone Sublingual Film**

Patients being switched between buprenorphine and naloxone or buprenorphine only sublingual tablets and buprenorphine and naloxone sublingual film should be started on the same dosage of the previously administered product. However, dosage adjustments may be necessary when switching between buprenorphine products. Not all strengths and combinations of the buprenorphine and naloxone sublingual films are bioequivalent to SUBOXONE® sublingual tablets as observed in pharmacokinetic

studies [see *Clinical Pharmacology (12.3)*]. Therefore, systemic exposures of buprenorphine and naloxone may be different when patients are switched from tablets to film or vice-versa. Patients should be monitored for symptoms related to over-dosing or under-dosing.

## 2.10 Switching Between Buprenorphine and Naloxone Sublingual Film Strengths

As indicated in Table 1, the sizes and the compositions of the four units of buprenorphine and naloxone sublingual films, i.e., 2 mg/0.5 mg, 4 mg/1 mg, 8 mg/2 mg and the 12 mg/3 mg units, are different from one another. If patients switch between various combinations of lower and higher strength units of buprenorphine and naloxone sublingual films to obtain the same total dose, (e.g., from three 4 mg/1 mg units to a single 12 mg/3 mg unit, or vice-versa), systemic exposures of buprenorphine and naloxone may be different and patients should be monitored for over-dosing or under-dosing. For this reason, pharmacist should not substitute one or more film strengths for another without approval of the prescriber.

**Table 1. Comparison of Available Buprenorphine and Naloxone Sublingual Film Strengths by Dimensions and Drug Concentrations.**

| <b>buprenorphine and naloxone sublingual film unit strength (buprenorphine/naloxone)</b> | <b>buprenorphine and naloxone sublingual film unit dimensions</b> | <b>Buprenorphine Concentration % (w/w)</b> | <b>Naloxone Concentration % (w/w)</b> |
|--|---|--|---------------------------------------|
| 2 mg/0.5 mg  | 22.0 mm x 12.8 mm   | 5.4  | 1.53                                  |
| 4 mg/1 mg<br>(2 times the length of the 2 mg/0.5 mg unit)                                | 22.0 mm x 25.6 mm   | 5.4  | 1.53                                  |
| 8 mg/2 mg  | 22.0 mm x 12.8 mm   | 17.2                                       | 4.88                                  |
| 12 mg/3 mg<br>(1.5 times the length of the 8 mg/2 mg unit)                               | 22.0 mm X 19.2 mm   | 17.2                                       | 4.88                                  |

## 2.11 Switching Between Sublingual and Buccal Sites of Administration

The systemic exposure of buprenorphine between buccal and sublingual administration of buprenorphine and naloxone sublingual film is similar. Therefore, once induction is complete, patients can switch between buccal and sublingual administration without significant risk of under or overdosing.

## 3 DOSAGE FORMS AND STRENGTHS

Buprenorphine and naloxone sublingual film is supplied as an orange rectangular film with a white printed logo in four dosage strengths:

- Buprenorphine 2 mg/naloxone 0.5 mg,
- Buprenorphine 4 mg/naloxone 1 mg,
- Buprenorphine 8 mg/naloxone 2 mg and
- Buprenorphine 12 mg/naloxone 3 mg

## 4 CONTRAINDICATIONS

Buprenorphine and naloxone sublingual film is contraindicated in patients with a history of hypersensitivity to buprenorphine or naloxone as serious adverse reactions, including anaphylactic shock, have been reported [see *Warnings and Precautions (5.9)*].

## 5 WARNINGS AND PRECAUTIONS

### 5.1 Addiction, Abuse, and Misuse

Buprenorphine and naloxone sublingual film contains buprenorphine, a schedule III controlled substance that can be abused in a manner similar to other opioids, legal or illicit. Prescribe and dispense buprenorphine with appropriate precautions to minimize risk of misuse, abuse, or diversion, and ensure appropriate protection from theft, including in the home. Clinical monitoring appropriate to the patient's level of stability is essential. Multiple refills should not be prescribed early in treatment or without appropriate patient follow-up visits [see *Drug Abuse and Dependence (9.2)*].

## **5.2 Risk of Life-Threatening Respiratory and Central Nervous System (CNS) Depression**

Buprenorphine has been associated with life-threatening respiratory depression and death. Many, but not all, post-marketing reports regarding coma and death involved misuse by self-injection or were associated with the concomitant use of buprenorphine and benzodiazepines or other CNS depressants, including alcohol. Warn patients of the potential danger of self-administration of benzodiazepines or other CNS depressants while under treatment with buprenorphine and naloxone sublingual film [see *Warnings and Precautions (5.3)*, *Drug Interactions (7)*].

Use buprenorphine and naloxone sublingual film with caution in patients with compromised respiratory function (e.g., chronic obstructive pulmonary disease, cor pulmonale, decreased respiratory reserve, hypoxia, hypercapnia, or pre-existing respiratory depression).

Opioids can cause sleep-related breathing disorders including central sleep apnea (CSA) and sleep-related hypoxemia. Opioid use increases the risk of CSA in a dose-dependent fashion. In patients who present with CSA, consider decreasing the opioid dosage using best practices for opioid taper [see *Dosage and Administration (2.8)*].

## **5.3 Managing Risks from Concomitant Use of Benzodiazepines or Other CNS Depressants**

Concomitant use of buprenorphine and benzodiazepines or other CNS depressants increases the risk of adverse reactions including overdose and death. Medication-assisted treatment of opioid use disorder, however, should not be categorically denied to patients taking these drugs. Prohibiting or creating barriers to treatment can pose an even greater risk of morbidity and mortality due to the opioid use disorder alone.

As a routine part of orientation to buprenorphine treatment, educate patients about the risks of concomitant use of benzodiazepines, sedatives, opioid analgesics, and alcohol.

Develop strategies to manage use of prescribed or illicit benzodiazepines or other CNS depressants at initiation of buprenorphine treatment, or if it emerges as a concern during treatment. Adjustments to induction procedures and additional monitoring may be required. There is no evidence to support dose limitations or arbitrary caps of buprenorphine as a strategy to address benzodiazepine use in buprenorphine-treated patients. However, if a patient is sedated at the time of buprenorphine dosing, delay or omit the buprenorphine dose if appropriate.

Cessation of benzodiazepines or other CNS depressants is preferred in most cases of concomitant use. In some cases, monitoring in a higher level of care for taper may be appropriate. In others, gradually tapering a patient off of a prescribed benzodiazepine or other CNS depressant or decreasing to the lowest effective dose may be appropriate.

For patients in buprenorphine treatment, benzodiazepines are not the treatment of choice for anxiety or insomnia. Before co-prescribing benzodiazepines, ensure that patients are appropriately diagnosed and consider alternative medications and non-pharmacologic treatments to address anxiety or insomnia. Ensure that other healthcare providers prescribing benzodiazepines or other CNS depressants are aware of the patient's buprenorphine treatment and coordinate care to minimize the risks associated with concomitant use.

In addition, take measures to confirm that patients are taking their medications as prescribed and are not diverting or supplementing with illicit drugs. Toxicology screening should test for prescribed and illicit benzodiazepines [see *Drug Interactions (7)*].



## 5.4 Unintentional Pediatric Exposure

Buprenorphine can cause severe, possibly fatal, respiratory depression in children who are accidentally exposed to it. Store buprenorphine-containing medications safely out of the sight and reach of children and destroy any unused medication appropriately [see *Patient Counseling Information (17)*].

## 5.5 Neonatal Opioid Withdrawal Syndrome

Neonatal opioid withdrawal syndrome (NOWS) is an expected and treatable outcome of prolonged use of opioids during pregnancy, whether that use is medically-authorized or illicit. Unlike opioid withdrawal syndrome in adults, NOWS may be life-threatening if not recognized and treated in the neonate. Healthcare professionals should observe newborns for signs of NOWS and manage accordingly [see *Use in Specific Populations (8.1)*].

Advise pregnant women receiving opioid addiction treatment with buprenorphine and naloxone sublingual film of the risk of neonatal opioid withdrawal syndrome and ensure that appropriate treatment will be available [see *Use in Specific Populations (8.1)*]. This risk must be balanced against the risk of untreated opioid addiction which often results in continued or relapsing illicit opioid use and is associated with poor pregnancy outcomes. Therefore, prescribers should discuss the importance and benefits of management of opioid addiction throughout pregnancy.

## 5.6 Adrenal Insufficiency

Cases of adrenal insufficiency have been reported with opioid use, more often following greater than one month of use. Presentation of adrenal insufficiency may include non-specific symptoms and signs including nausea, vomiting, anorexia, fatigue, weakness, dizziness, and low blood pressure. If adrenal insufficiency is suspected, confirm the diagnosis with diagnostic testing as soon as possible. If adrenal insufficiency is diagnosed, treat with physiologic replacement doses of corticosteroids. Wean the patient off of the opioid to allow adrenal function to recover and continue corticosteroid treatment until adrenal function recovers. Other opioids may be tried as some cases reported use of a different opioid without recurrence of adrenal insufficiency. The information available does not identify any particular opioids as being more likely to be associated with adrenal insufficiency.

## 5.7 Risk of Opioid Withdrawal with Abrupt Discontinuation

Buprenorphine is a partial agonist at the mu-opioid receptor and chronic administration produces physical dependence of the opioid type, characterized by withdrawal signs and symptoms upon abrupt discontinuation or rapid taper. The withdrawal syndrome is typically milder than seen with full agonists and may be delayed in onset [see *Drug Abuse and Dependence (9.3)*]. When discontinuing buprenorphine and naloxone sublingual film, gradually taper the dosage [see *Dosage and Administration (2.8)*].

## 5.8 Risk of Hepatitis, Hepatic Events

Cases of cytolytic hepatitis and hepatitis with jaundice have been observed in individuals receiving buprenorphine in clinical trials and through post-marketing adverse event reports. The spectrum of abnormalities ranges from transient asymptomatic elevations in hepatic transaminases to case reports of death, hepatic failure, hepatic necrosis, hepatorenal syndrome, and hepatic encephalopathy. In many cases, the presence of pre-existing liver enzyme abnormalities, infection with hepatitis B or hepatitis C virus, concomitant usage of other potentially hepatotoxic drugs, and ongoing injecting drug use may have played a causative or contributory role. In other cases, insufficient data were available to determine the etiology of the abnormality. Withdrawal of buprenorphine has resulted in amelioration of acute hepatitis in some cases; however, in other cases no dose reduction was necessary. The possibility exists that buprenorphine had a causative or contributory role in the development of the hepatic abnormality in some cases. Liver function tests, prior to initiation of treatment, are recommended to establish a baseline. Periodic monitoring of liver function during treatment is also recommended. A biological and etiological evaluation is recommended when a hepatic event is suspected. Depending on the case, buprenorphine and naloxone sublingual film may need to be carefully discontinued to prevent

withdrawal signs and symptoms and a return by the patient to illicit drug use, and strict monitoring of the patient should be initiated.

## **5.9 Hypersensitivity Reactions**

Cases of hypersensitivity to buprenorphine and naloxone containing products have been reported both in clinical trials and in the post-marketing experience. Cases of bronchospasm, angioneurotic edema, and anaphylactic shock have been reported. The most common signs and symptoms include rashes, hives, and pruritus. A history of hypersensitivity to buprenorphine or naloxone is a contraindication to the use of buprenorphine and naloxone sublingual film.

## **5.10 Precipitation of Opioid Withdrawal Signs and Symptoms**

Because it contains naloxone, buprenorphine and naloxone sublingual film is likely to produce withdrawal signs and symptoms if misused parenterally by individuals dependent on full opioid agonists such as heroin, morphine, or methadone. Because of the partial agonist properties of buprenorphine, buprenorphine and naloxone sublingual film may precipitate opioid withdrawal signs and symptoms in such persons if administered before the agonist effects of the opioid have subsided.

## **5.11 Risk of Overdose in Opioid Naïve Patients**

There have been reported deaths of opioid-naïve individuals who received a 2 mg dose of buprenorphine as a sublingual tablet for analgesia. buprenorphine and naloxone sublingual film is not appropriate as an analgesic.

## **5.12 Use in Patients With Impaired Hepatic Function**

Buprenorphine/naloxone products are not recommended in patients with severe hepatic impairment and may not be appropriate for patients with moderate hepatic impairment. The doses of buprenorphine and naloxone in this fixed-dose combination product cannot be individually titrated, and hepatic impairment results in a reduced clearance of naloxone to a much greater extent than buprenorphine. Therefore, patients with severe hepatic impairment will be exposed to substantially higher levels of naloxone than patients with normal hepatic function. This may result in an increased risk of precipitated withdrawal at the beginning of treatment (induction) and may interfere with buprenorphine's efficacy throughout treatment. In patients with moderate hepatic impairment, the differential reduction of naloxone clearance compared to buprenorphine clearance is not as great as in subjects with severe hepatic impairment. However, buprenorphine/naloxone products are not recommended for initiation of treatment (induction) in patients with moderate hepatic impairment due to the increased risk of precipitated withdrawal. Buprenorphine/naloxone products may be used with caution for maintenance treatment in patients with moderate hepatic impairment who have initiated treatment on a buprenorphine product without naloxone. However, patients should be carefully monitored and consideration given to the possibility of naloxone interfering with buprenorphine's efficacy [*see Use in Specific Populations (8.6)*].

## **5.13 Impairment of Ability to Drive or Operate Machinery**

Buprenorphine and naloxone sublingual film may impair the mental or physical abilities required for the performance of potentially dangerous tasks such as driving a car or operating machinery, especially during treatment induction and dose adjustment. Caution patients about driving or operating hazardous machinery until they are reasonably certain that buprenorphine and naloxone sublingual film therapy does not adversely affect his or her ability to engage in such activities.

## **5.14 Orthostatic Hypotension**

Like other opioids, buprenorphine and naloxone sublingual film may produce orthostatic hypotension in ambulatory patients.

## **5.15 Elevation of Cerebrospinal Fluid Pressure**

Buprenorphine, like other opioids, may elevate cerebrospinal fluid pressure and should be used with caution in patients with head injury, intracranial lesions, and other circumstances when cerebrospinal pressure may be increased. Buprenorphine can produce miosis and changes in the level of consciousness that may interfere with patient evaluation.

#### **5.16 Elevation of Intracholedochal Pressure**

Buprenorphine has been shown to increase intracholedochal pressure, as do other opioids, and thus should be administered with caution to patients with dysfunction of the biliary tract.

#### **5.17 Effects in Acute Abdominal Conditions**

As with other opioids, buprenorphine may obscure the diagnosis or clinical course of patients with acute abdominal conditions.

### **6 ADVERSE REACTIONS**

*The following serious adverse reactions are described elsewhere in the labeling:*

- Addiction, Abuse, and Misuse [see Warnings and Precautions (5.1)]
- Respiratory and CNS Depression [see Warnings and Precautions (5.2), (5.3)]
- Neonatal Opioid Withdrawal Syndrome [see Warnings and Precautions (5.5)]
- Adrenal Insufficiency [see Warnings and Precautions (5.6)]
- Opioid Withdrawal [see Warnings and Precautions (5.7, 5.10)]
- Hepatitis, Hepatic Events [see Warnings and Precautions (5.8)]
- Hypersensitivity Reactions [see Warnings and Precautions (5.9)]
- Orthostatic Hypotension [see Warnings and Precautions (5.14)]
- Elevation of Cerebrospinal Fluid Pressure [see Warnings and Precautions (5.15)]
- Elevation of Intracholedochal Pressure [see Warnings and Precautions (5.16)]

#### **6.1 Clinical Trials Experience**

Because clinical trials are conducted under widely varying conditions, adverse reaction rates observed in the clinical trials of a drug cannot be directly compared to rates in the clinical trials of another drug and may not reflect the rates observed in practice.

The safety of buprenorphine and naloxone sublingual film is supported by clinical trials using SUBUTEX® (buprenorphine) sublingual tablets and SUBOXONE (buprenorphine and naloxone) sublingual tablets, and other trials using buprenorphine sublingual solutions, as well as an open-label study in 194 patients treated with buprenorphine and naloxone sublingual film administered sublingually and 188 patients treated with the film administered buccally. In total, safety data from clinical studies are available from over 3000 opioid-dependent subjects exposed to buprenorphine at doses in the range used in the treatment of opioid dependence. Few differences in the adverse event profile were noted with regard to sublingually and buccally administered buprenorphine and naloxone sublingual film, SUBOXONE sublingual tablets, SUBUTEX sublingual tablets and a buprenorphine ethanolic sublingual solution.

The most common adverse event (>1%) associated with the sublingual administration of the buprenorphine and naloxone sublingual film was oral hypoesthesia. Other adverse events were constipation, glossodynia, oral mucosal erythema, vomiting, intoxication, disturbance in attention, palpitations, insomnia, withdrawal syndrome, hyperhidrosis, and blurred vision.

The most common adverse events associated with the buccal administration were similar to those observed with sublingual administration of the film.

Other adverse event data were derived from larger, controlled studies of SUBOXONE sublingual tablets and SUBUTEX sublingual tablets and of buprenorphine sublingual solution. In a comparative study of SUBOXONE sublingual tablets and SUBUTEX sublingual tablets, adverse event profiles were

similar for subjects treated with 16 mg/4 mg SUBOXONE sublingual tablets or 16 mg SUBUTEX sublingual tablets. The following adverse events were reported to occur by at least 5% of patients in a 4 week study of SUBOXONE sublingual tablets and SUBUTEX sublingual tablets.

**Table 2. Adverse Events (≥5%) by Body System and Treatment Group in a 4 Week Study**

| <b>Body System/ Adverse Event (COSTART Terminology)</b> | <b>SUBOXONE sublingual tablets<br/>16 mg/4 mg/day<br/>N=107<br/>n (%)</b> | <b>SUBUTEX sublingual tablets<br/>16 mg/day<br/>N=103<br/>n (%)</b> | <b>Placebo<br/>N=107<br/>n (%)</b> |
|---|---|---|------------------------------------|
| <b>Body as a Whole</b>                                  |   |   |                                    |
| Asthenia  | 7 (6.5%)  | 5 (4.9%)  | 7 (6.5%)                           |
| Chills  | 8 (7.5%)  | 8 (7.8%)  | 8 (7.5%)                           |
| Headache  | 39 (36.4%)  | 30 (29.1%)  | 24 (22.4%)                         |
| Infection   | 6 (5.6%)  | 12 (11.7%)  | 7 (6.5%)                           |
| Pain  | 24 (22.4%)  | 19 (18.4%)  | 20 (18.7%)                         |
| Pain abdomen  | 12 (11.2%)  | 12 (11.7%)  | 7 (6.5%)                           |
| Pain back   | 4 (3.7%)  | 8 (7.8%)  | 12 (11.2%)                         |
| Withdrawal syndrome                                     | 27 (25.2%)  | 19 (18.4%)  | 40 (37.4%)                         |
| <b>Cardiovascular System</b>                            |   |   |                                    |
| Vasodilation  | 10 (9.3%)   | 4 (3.9%)  | 7 (6.5%)                           |
| <b>Digestive System</b>                                 |   |   |                                    |
| Constipation  | 13 (12.1%)  | 8 (7.8%)  | 3 (2.8%)                           |
| Diarrhea  | 4 (3.7%)  | 5 (4.9%)  | 16 (15.0%)                         |
| Nausea  | 16 (15.0%)  | 14 (13.6%)  | 12 (11.2%)                         |
| Vomiting  | 8 (7.5%)  | 8 (7.8%)  | 5 (4.7%)                           |
| <b>Nervous System</b>                                   |   |   |                                    |
| Insomnia  | 15 (14.0%)  | 22 (21.4%)  | 17 (15.9%)                         |
| <b>Respiratory System</b>                               |   |   |                                    |
| Rhinitis  | 5 (4.7%)  | 10 (9.7%)   | 14 (13.1%)                         |
| <b>Skin And Appendages</b>                              |   |   |                                    |
| Sweating  | 15 (14.0%)  | 13 (12.6%)  | 11 (10.3%)                         |

Abbreviations: COSTART = Coding Symbols for Thesaurus of Adverse Reaction Terms.

The adverse event profile of buprenorphine was also characterized in the dose-controlled study of a buprenorphine ethanolic solution, over a range of doses in four months of treatment. Table 3 shows adverse events reported by at least 5% of subjects in any dose group in the dose-controlled trial.

**Table 3. Adverse Events (≥5%) by Body System and Treatment Group in a 16 Week Study**

| <b>Body System/ Adverse Event (COSTART Terminology)</b> | <b>Buprenorphine Dose</b>            |                                 |                                      |                                  |                                   |
|---|--------------------------------------|---------------------------------|--------------------------------------|----------------------------------|-----------------------------------|
|   | <b>Very Low*<br/>N=184<br/>n (%)</b> | <b>Low*<br/>N=180<br/>n (%)</b> | <b>Moderate*<br/>N=186<br/>n (%)</b> | <b>High*<br/>N=181<br/>n (%)</b> | <b>Total*<br/>N=731<br/>n (%)</b> |
| <b>Body as a Whole</b>                                  |                                      |                                 |                                      |                                  |                                   |
| Abscess   | 9 (5%)                               | 2 (1%)                          | 3 (2%)                               | 2 (1%)                           | 16 (2%)                           |
| Asthenia  | 26 (14%)                             | 28 (16%)                        | 26 (14%)                             | 24 (13%)                         | 104 (14%)                         |
| Chills  | 11 (6%)                              | 12 (7%)                         | 9 (5%)                               | 10 (6%)                          | 42 (6%)                           |
| Fever   | 7 (4%)                               | 2 (1%)                          | 2 (1%)                               | 10 (6%)                          | 21 (3%)                           |

|                            |          |          |          |          |           |
|----------------------------|----------|----------|----------|----------|-----------|
| Flu syndrome               | 4 (2%)   | 13 (7%)  | 19 (10%) | 8 (4%)   | 44 (6%)   |
| Headache                   | 51 (28%) | 62 (34%) | 54 (29%) | 53 (29%) | 220 (30%) |
| Infection                  | 32 (17%) | 39 (22%) | 38 (20%) | 40 (22%) | 149 (20%) |
| Injury accidental          | 5 (3%)   | 10 (6%)  | 5 (3%)   | 5 (3%)   | 25 (3%)   |
| Pain                       | 47 (26%) | 37 (21%) | 49 (26%) | 44 (24%) | 177 (24%) |
| Pain back                  | 18 (10%) | 29 (16%) | 28 (15%) | 27 (15%) | 102 (14%) |
| Withdrawal syndrome        | 45 (24%) | 40 (22%) | 41 (22%) | 36 (20%) | 162 (22%) |
| <b>Digestive System</b>    |          |          |          |          |           |
| Constipation               | 10 (5%)  | 23 (13%) | 23 (12%) | 26 (14%) | 82 (11%)  |
| Diarrhea                   | 19 (10%) | 8 (4%)   | 9 (5%)   | 4 (2%)   | 40 (5%)   |
| Dyspepsia                  | 6 (3%)   | 10 (6%)  | 4 (2%)   | 4 (2%)   | 24 (3%)   |
| Nausea                     | 12 (7%)  | 22 (12%) | 23 (12%) | 18 (10%) | 75 (10%)  |
| Vomiting                   | 8 (4%)   | 6 (3%)   | 10 (5%)  | 14 (8%)  | 38 (5%)   |
| <b>Nervous System</b>      |          |          |          |          |           |
| Anxiety                    | 22 (12%) | 24 (13%) | 20 (11%) | 25 (14%) | 91 (12%)  |
| Depression                 | 24 (13%) | 16 (9%)  | 25 (13%) | 18 (10%) | 83 (11%)  |
| Dizziness                  | 4 (2%)   | 9 (5%)   | 7 (4%)   | 11 (6%)  | 31 (4%)   |
| Insomnia                   | 42 (23%) | 50 (28%) | 43 (23%) | 51 (28%) | 186 (25%) |
| Nervousness                | 12 (7%)  | 11 (6%)  | 10 (5%)  | 13 (7%)  | 46 (6%)   |
| Somnolence                 | 5 (3%)   | 13 (7%)  | 9 (5%)   | 11 (6%)  | 38 (5%)   |
| <b>Respiratory System</b>  |          |          |          |          |           |
| Cough increase             | 5 (3%)   | 11 (6%)  | 6 (3%)   | 4 (2%)   | 26 (4%)   |
| Pharyngitis                | 6 (3%)   | 7 (4%)   | 6 (3%)   | 9 (5%)   | 28 (4%)   |
| Rhinitis                   | 27 (15%) | 16 (9%)  | 15 (8%)  | 21 (12%) | 79 (11%)  |
| <b>Skin and Appendages</b> |          |          |          |          |           |
| Sweat                      | 23 (13%) | 21 (12%) | 20 (11%) | 23 (13%) | 87 (12%)  |
| <b>Special Senses</b>      |          |          |          |          |           |
| Runny eyes                 | 13 (7%)  | 9 (5%)   | 6 (3%)   | 6 (3%)   | 34 (5%)   |

\*Sublingual solution. Doses in this table cannot necessarily be delivered in tablet form, but for comparison purposes:

"Very low" dose (1 mg solution) would be less than a tablet dose of 2 mg

"Low" dose (4 mg solution) approximates a 6 mg tablet dose

"Moderate" dose (8 mg solution) approximates a 12 mg tablet dose

"High" dose (16 mg solution) approximates a 24 mg tablet dose

The safety of buprenorphine and naloxone sublingual film during treatment induction is supported by a clinical trial using 16 patients treated with buprenorphine and naloxone sublingual film and 18 treated with a buprenorphine-only sublingual film. Few differences in the adverse event profiles were noted between buprenorphine and naloxone sublingual film and the buprenorphine-only sublingual film.

The most common adverse event occurring during treatment induction and the 3 days following induction using buprenorphine and naloxone sublingual film was restlessness. Other adverse events were anxiety, piloerection, stomach discomfort, irritability, headache, rhinorrhea, cold sweat, arthralgia, and lacrimation increased.

Four subjects left the study early on the first day of buprenorphine and naloxone sublingual film administration. However, there was no evidence to suggest that any of the four subjects experienced precipitated withdrawal secondary to the administration of buprenorphine or buprenorphine/naloxone sublingual films.

## 6.2 Postmarketing Experience

The following adverse reactions have been identified during post-approval use of buprenorphine and naloxone sublingual film. Because these reactions are reported voluntarily from a population of uncertain size, it is not always possible to reliably estimate their frequency or establish a causal relationship to drug exposure.

The most frequently reported postmarketing adverse events were peripheral edema, stomatitis, glossitis, and blistering and ulceration of the mouth or tongue.

**Serotonin syndrome:** Cases of serotonin syndrome, a potentially life-threatening condition, have been reported during concomitant use of opioids with serotonergic drugs.

**Adrenal insufficiency:** Cases of adrenal insufficiency have been reported with opioid use, more often following greater than one month of use.

**Anaphylaxis:** Anaphylaxis has been reported with ingredients contained in buprenorphine and naloxone sublingual film.

**Androgen deficiency:** Cases of androgen deficiency have occurred with chronic use of opioids [see *Clinical Pharmacology (12.2)*].

**Local Reactions:** glossodynia, glossitis, oral mucosal erythema, oral hypoesthesia, and stomatitis

## 7 DRUG INTERACTIONS

Table 4 Includes clinically significant drug interactions with buprenorphine and naloxone.

**Table 4. Clinically Significant Drug Interactions**

| <b>Benzodiazepines and Other Central Nervous System (CNS) Depressants</b> |   |
|---|---|
| <i>Clinical Impact:</i>   | Due to additive pharmacologic effects, the concomitant use of benzodiazepines or other CNS depressants, including alcohol, increases the risk of respiratory depression, profound sedation, coma, and death.  |
| <i>Intervention:</i>  | Cessation of benzodiazepines or other CNS depressants is preferred in most cases of concomitant use. In some cases, monitoring in a higher level of care for taper may be appropriate. In others, gradually tapering a patient off of a prescribed benzodiazepine or other CNS depressant or decreasing to the lowest effective dose may be appropriate.<br><br>Before co-prescribing benzodiazepines for anxiety or insomnia, ensure that patients are appropriately diagnosed and consider alternative medications and non-pharmacologic treatments [see <i>Warnings and Precautions (5.2, 5.3)</i> ].                          |
| <i>Examples:</i>  | Alcohol, non-benzodiazepine sedatives/hypnotics, anxiolytics, tranquilizers, muscle relaxants, general anesthetics, antipsychotics, and other opioids.  |
| <b>Inhibitors of CYP3A4</b>   |   |
| <i>Clinical Impact:</i>   | The concomitant use of buprenorphine and CYP3A4 inhibitors can increase the plasma concentration of buprenorphine, resulting in increased or prolonged opioid effects, particularly when an inhibitor is added after a stable dose of buprenorphine and naloxone sublingual film is achieved.<br><br>After stopping a CYP3A4 inhibitor, as the effects of the inhibitor decline, the buprenorphine plasma concentration will decrease [see <i>Clinical Pharmacology (12.3)</i> ], potentially resulting in decreased opioid efficacy or a withdrawal syndrome in patients who had developed physical dependence to buprenorphine. |
| <i>Intervention:</i>  | If concomitant use is necessary, consider dosage reduction of buprenorphine and naloxone sublingual film until stable drug effects are achieved. Monitor patients for respiratory depression and sedation at frequent intervals.  |

|   |   |
|---|---|
|   | If a CYP3A4 inhibitor is discontinued, consider increasing the buprenorphine and naloxone sublingual film dosage until stable drug effects are achieved. Monitor for signs of opioid withdrawal.  |
| <i>Examples:</i>  | Macrolide antibiotics (e.g., erythromycin), azole-antifungal agents (e.g. ketoconazole), protease inhibitors (e.g., ritonavir)  |
| <b>CYP3A4 Inducers</b>  |   |
| <i>Clinical Impact:</i>   | The concomitant use of buprenorphine and CYP3A4 inducers can decrease the plasma concentration of buprenorphine [see <i>Clinical Pharmacology (12.3)</i> ], potentially resulting in decreased efficacy or onset of a withdrawal syndrome in patients who have developed physical dependence to buprenorphine.<br><br>After stopping a CYP3A4 inducer, as the effects of the inducer decline, the buprenorphine plasma concentration will increase [see <i>Clinical Pharmacology (12.3)</i> ], which could increase or prolong both therapeutic effects and adverse reactions and may cause serious respiratory depression. |
| <i>Intervention:</i>  | If concomitant use is necessary, consider increasing the buprenorphine and naloxone sublingual film dosage until stable drug effects are achieved. Monitor for signs of opioid withdrawal.<br><br>If a CYP3A4 inducer is discontinued, consider buprenorphine and naloxone sublingual film dosage reduction and monitor for signs of respiratory depression.  |
| <i>Examples:</i>  | Rifampin, carbamazepine, phenytoin  |
| <b>Antiretrovirals : Non-nucleoside reverse transcriptase inhibitors (NNRTIs)</b> |   |
| <i>Clinical Impact:</i>   | Non-nucleoside reverse transcriptase inhibitors (NNRTIs) are metabolized principally by CYP3A4. Efavirenz, nevirapine, and etravirine are known CYP3A inducers, whereas delavirdine is a CYP3A inhibitor. Significant pharmacokinetic interactions between NNRTIs (e.g., efavirenz and delavirdine) and buprenorphine have been shown in clinical studies, but these pharmacokinetic interactions did not result in any significant pharmacodynamic effects.  |
| <i>Intervention:</i>  | Patients who are on chronic buprenorphine and naloxone sublingual film treatment should have their dose monitored if NNRTIs are added to their treatment regimen.   |
| <i>Examples:</i>  | efavirenz, nevirapine, etravirine, delavirdine  |
| <b>Antiretrovirals : Protease inhibitors (PIs)</b>                                |   |
| <i>Clinical Impact:</i>   | Studies have shown some antiretroviral protease inhibitors (PIs) with CYP3A4 inhibitory activity (nelfinavir, lopinavir/ritonavir, ritonavir) have little effect on buprenorphine pharmacokinetic and no significant pharmacodynamic effects. Other PIs with CYP3A4 inhibitory activity (atazanavir and atazanavir/ritonavir) resulted in elevated levels of buprenorphine and norbuprenorphine, and patients in one study reported increased sedation. Symptoms of opioid excess have been found in post-marketing reports of patients receiving buprenorphine and atazanavir with and without ritonavir concomitantly.    |
| <i>Intervention:</i>  | Monitor patients taking buprenorphine and naloxone sublingual film and atazanavir with and without ritonavir, and reduce dose of buprenorphine and naloxone sublingual film if warranted.   |
| <i>Examples:</i>  | atazanavir, ritonavir   |
| <b>Antiretrovirals : Nucleoside reverse transcriptase inhibitors (NRTIs)</b>      |   |
| <i>Clinical Impact:</i>   | Nucleoside reverse transcriptase inhibitors (NRTIs) do not appear to induce or  |

|   |  |
|---|--|
|   | inhibit the P450 enzyme pathway, thus no interactions with buprenorphine are expected.   |
| <i>Intervention:</i>                        | None   |
| <b>Serotonergic Drugs</b>                   |  |
| <i>Clinical Impact:</i>                     | The concomitant use of opioids with other drugs that affect the serotonergic neurotransmitter system has resulted in serotonin syndrome.   |
| <i>Intervention:</i>                        | If concomitant use is warranted, carefully observe the patient, particularly during treatment initiation and dose adjustment. Discontinue buprenorphine and naloxone sublingual film if serotonin syndrome is suspected.   |
| <i>Examples:</i>                            | Selective serotonin reuptake inhibitors (SSRIs), serotonin and norepinephrine reuptake inhibitors (SNRIs), tricyclic antidepressants (TCAs), triptans, 5-HT <sub>3</sub> receptor antagonists, drugs that affect the serotonin neurotransmitter system (e.g., mirtazapine, trazodone, tramadol), certain muscle relaxants (i.e., cyclobenzaprine, metaxalone), monoamine oxidase (MAO) inhibitors (those intended to treat psychiatric disorders and also others, such as linezolid and intravenous methylene blue). |
| <b>Monoamine Oxidase Inhibitors (MAOIs)</b> |  |
| <i>Clinical Impact:</i>                     | MAOI interactions with opioids may manifest as serotonin syndrome or opioid toxicity (e.g., respiratory depression, coma).   |
| <i>Intervention:</i>                        | The use of buprenorphine and naloxone sublingual film is not recommended for patients taking MAOIs or within 14 days of stopping such treatment.   |
| <i>Examples:</i>                            | phenelzine, tranylcypromine, linezolid   |
| <b>Muscle Relaxants</b>                     |  |
| <i>Clinical Impact:</i>                     | Buprenorphine may enhance the neuromuscular blocking action of skeletal muscle relaxants and produce an increased degree of respiratory depression.  |
| <i>Intervention:</i>                        | Monitor patients receiving muscle relaxants and buprenorphine and naloxone sublingual film for signs of respiratory depression that may be greater than otherwise expected and decrease the dosage of buprenorphine and naloxone sublingual film and/or the muscle relaxant as necessary.  |
| <b>Diuretics</b>                            |  |
| <i>Clinical Impact:</i>                     | Opioids can reduce the efficacy of diuretics by inducing the release of antidiuretic hormone.  |
| <i>Intervention:</i>                        | Monitor patients for signs of diminished diuresis and/or effects on blood pressure and increase the dosage of the diuretic as needed.  |
| <b>Anticholinergic Drugs</b>                |  |
| <i>Clinical Impact:</i>                     | The concomitant use of anticholinergic drugs may increase the risk of urinary retention and/or severe constipation, which may lead to paralytic ileus.   |
| <i>Intervention:</i>                        | Monitor patients for signs of urinary retention or reduced gastric motility when buprenorphine and naloxone sublingual film is used concomitantly with anticholinergic drugs.  |

## 8 USE IN SPECIFIC POPULATIONS

### 8.1 Pregnancy

#### Risk Summary

The data on use of buprenorphine, one of the active ingredients in buprenorphine and naloxone sublingual film, in pregnancy, are limited; however, these data do not indicate an increased risk of major malformations specifically due to buprenorphine exposure. There are limited data from randomized clinical trials in women maintained on buprenorphine that were not designed appropriately to assess the



risk of major malformations [see Data]. Observational studies have reported on congenital malformations among buprenorphine-exposed pregnancies, but were also not designed appropriately to assess the risk of congenital malformations specifically due to buprenorphine exposure [see Data]. The extremely limited data on sublingual naloxone exposure in pregnancy are not sufficient to evaluate a drug-associated risk.

Reproductive and developmental studies in rats and rabbits identified adverse events at clinically relevant and higher doses. Embryofetal death was observed in both rats and rabbits administered buprenorphine during the period of organogenesis at doses approximately 6 and 0.3 times, respectively, the human sublingual dose of 16 mg/day of buprenorphine. Pre- and postnatal development studies in rats demonstrated increased neonatal deaths at 0.3 times and above and dystocia at approximately 3 times the human sublingual dose of 16 mg/day of buprenorphine. No clear teratogenic effects were seen when buprenorphine was administered during organogenesis with a range of doses equivalent to or greater than the human sublingual dose of 16 mg/day of buprenorphine. However, increases in skeletal abnormalities were noted in rats and rabbits administered buprenorphine daily during organogenesis at doses approximately 0.6 and approximately equal to the human sublingual dose of 16 mg/day of buprenorphine, respectively. In a few studies, some events such as acephalus and omphalocele were also observed but these findings were not clearly treatment-related [see Data]. Based on animal data, advise pregnant women of the potential risk to a fetus.

The estimated background risk of major birth defects and miscarriage for the indicated population are unknown. All pregnancies have a background risk of birth defect, loss, or other adverse outcomes. In the U.S. general population, the estimated background risk of major birth defects and miscarriage in clinically recognized pregnancies is 2-4% and 15-20%, respectively.

### Clinical Considerations

#### *Disease-associated maternal and embryo-fetal risk*

Untreated opioid addiction in pregnancy is associated with adverse obstetrical outcomes such as low birth weight, preterm birth, and fetal death. In addition, untreated opioid addiction often results in continued or relapsing illicit opioid use.

#### *Dose Adjustment during Pregnancy and the Postpartum Period*

Dosage adjustments of buprenorphine may be required during pregnancy, even if the patient was maintained on a stable dose prior to pregnancy. Withdrawal signs and symptoms should be monitored closely and the dose adjusted as necessary.

#### *Fetal/neonatal adverse reactions*

Neonatal opioid withdrawal syndrome may occur in newborn infants of mothers who are receiving treatment with buprenorphine and naloxone sublingual film.

Neonatal opioid withdrawal syndrome presents as irritability, hyperactivity and abnormal sleep pattern, high pitched cry, tremor, vomiting, diarrhea, and/or failure to gain weight. Signs of neonatal withdrawal usually occur in the first days after birth. The duration and severity of neonatal opioid withdrawal syndrome may vary. Observe newborns for signs of neonatal opioid withdrawal syndrome and manage accordingly [see Warnings and Precautions (5.5)].

#### *Labor or Delivery*

Opioid-dependent women on buprenorphine maintenance therapy may require additional analgesia during labor.

### Data

#### *Human Data*

Studies have been conducted to evaluate neonatal outcomes in women exposed to buprenorphine during pregnancy. Limited data on malformations from trials, observational studies, case series, and case

reports on buprenorphine use in pregnancy do not indicate an increased risk of major malformations specifically due to buprenorphine. Several factors may complicate the interpretation of investigations of the children of women who take buprenorphine during pregnancy, including maternal use of illicit drugs, late presentation for prenatal care, infection, poor compliance, poor nutrition, and psychosocial circumstances. Interpretation of data is complicated further by the lack of information on untreated opioid-dependent pregnant women, who would be the most appropriate group for comparison. Rather, women on another form of opioid medication-assisted treatment, or women in the general population are generally used as the comparison group. However, women in these comparison groups may be different from women prescribed buprenorphine-containing products with respect to maternal factors that may lead to poor pregnancy outcomes.

In a multicenter, double-blind, randomized, controlled trial [Maternal Opioid Treatment: Human Experimental Research (MOTHER)] designed primarily to assess neonatal opioid withdrawal effects, opioid-dependent pregnant women were randomized to buprenorphine (n=86) or methadone (n=89) treatment, with enrollment at an average gestational age of 18.7 weeks in both groups. A total of 28 of the 86 women in the buprenorphine group (33%) and 16 of the 89 women in the methadone group (18%) discontinued treatment before the end of pregnancy.

Among women who remained in treatment until delivery, there was no difference between buprenorphine-treated and methadone-treated groups in the number of neonates requiring NOWS treatment or in the peak severity of NOWS. Buprenorphine-exposed neonates required less morphine (mean total dose, 1.1 mg vs. 10.4 mg), had shorter hospital stays (10.0 days vs. 17.5 days), and shorter duration of treatment for NOWS (4.1 days vs. 9.9 days) compared to the methadone-exposed group. There were no differences between groups in other primary outcomes (neonatal head circumference,) or secondary outcomes (weight and length at birth, preterm birth, gestational age at delivery, and 1-minute and 5-minute Apgar scores), or in the rates of maternal or neonatal adverse events. The outcomes among mothers who discontinued treatment before delivery and may have relapsed to illicit opioid use are not known. Because of the imbalance in discontinuation rates between the buprenorphine and methadone groups, the study findings are difficult to interpret.

#### *Animal Data*

The exposure margins listed below are based on body surface area comparisons ( $\text{mg}/\text{m}^2$ ) to the human sublingual dose of 16 mg buprenorphine via SUBOXONE sublingual tablets.

Effects on embryo-fetal development were studied in Sprague-Dawley rats and Russian white rabbits following oral (1:1) and intramuscular (IM) (3:2) administration of mixtures of buprenorphine and naloxone during the period of organogenesis. Following oral administration to rats no teratogenic effects were observed at buprenorphine doses up to 250 mg/kg/day (estimated exposure approximately 150 times the human sublingual dose of 16 mg) in the presence of maternal toxicity (mortality). Following oral administration to rabbits, no teratogenic effects were observed at buprenorphine doses up to 40 mg/kg/day (estimated exposure approximately 50 times, the human sublingual dose of 16 mg) in the absence of clear maternal toxicity. No definitive drug-related teratogenic effects were observed in rats and rabbits at IM doses up to 30 mg/kg/day (estimated exposure approximately 20 times and 35 times, respectively, the human sublingual dose of 16 mg). Maternal toxicity resulting in mortality was noted in these studies in both rats and rabbits. Acephalus was observed in one rabbit fetus from the low-dose group and omphalocele was observed in two rabbit fetuses from the same litter in the mid-dose group; no findings were observed in fetuses from the high-dose group. Maternal toxicity was seen in the high-dose group but not at the lower doses where the findings were observed. Following oral administration of buprenorphine to rats, dose-related post-implantation losses, evidenced by increases in the numbers of early resorptions with consequent reductions in the numbers of fetuses, were observed at doses of 10 mg/kg/day or greater (estimated exposure approximately 6 times the human sublingual dose of 16 mg). In the rabbit, increased post-implantation losses occurred at an oral dose of 40 mg/kg/day. Following IM administration in the rat and the rabbit, post-implantation losses, as evidenced by decreases in live fetuses and increases in resorptions, occurred at 30 mg/kg/day.

Buprenorphine was not teratogenic in rats or rabbits after IM or subcutaneous (SC) doses up to 5 mg/kg/day (estimated exposure was approximately 3 and 6 times, respectively, the human sublingual dose of 16 mg), after IV doses up to 0.8 mg/kg/day (estimated exposure was approximately 0.5 times and equal to, respectively, the human sublingual dose of 16 mg), or after oral doses up to 160 mg/kg/day in rats (estimated exposure was approximately 95 times the human sublingual dose of 16 mg) and 25 mg/kg/day in rabbits (estimated exposure was approximately 30 times the human daily sublingual dose of 16 mg). Significant increases in skeletal abnormalities (e.g., extra thoracic vertebra or thoraco-lumbar ribs) were noted in rats after SC administration of 1 mg/kg/day and up (estimated exposure was approximately 0.6 times the human sublingual dose of 16 mg), but were not observed at oral doses up to 160 mg/kg/day. Increases in skeletal abnormalities in rabbits after IM administration of 5 mg/kg/day (estimated exposure was approximately 6 times the human daily sublingual dose of 16 mg) in the absence of maternal toxicity or oral administration of 1 mg/kg/day or greater (estimated exposure was approximately equal to the human sublingual dose of 16 mg) were not statistically significant.

In rabbits, buprenorphine produced statistically significant pre-implantation losses at oral doses of 1 mg/kg/day or greater and post-implantation losses that were statistically significant at IV doses of 0.2 mg/kg/day or greater (estimated exposure approximately 0.3 times the human daily sublingual dose of 16 mg). No maternal toxicity was noted at doses causing post-implantation loss in this study.

Dystocia was noted in pregnant rats treated intramuscularly with buprenorphine from Gestation Day 14 through Lactation Day 21 at 5 mg/kg/day (approximately 3 times the human sublingual dose of 16 mg). Fertility, pre- and post-natal development studies with buprenorphine in rats indicated increases in neonatal mortality after oral doses of 0.8 mg/kg/day and up (approximately 0.5 times the human daily sublingual dose of 16 mg), after IM doses of 0.5 mg/kg/day and up (approximately 0.3 times the human sublingual dose of 16 mg), and after SC doses of 0.1 mg/kg/day and up (approximately 0.06 times the human sublingual dose of 16 mg). An apparent lack of milk production during these studies likely contributed to the decreased pup viability and lactation indices.

Delays in the occurrence of righting reflex and startle response were noted in rat pups at an oral dose of 80 mg/kg/day (approximately 50 times the human sublingual dose of 16 mg).

## **8.2 Lactation**

### Risk Summary

Based on two studies in 13 lactating women maintained on buprenorphine treatment, buprenorphine and its metabolite norbuprenorphine were present in low levels in human milk and infant urine. Available data have not shown adverse reactions in breastfed infants. There are no data on the combination product buprenorphine/naloxone in breastfeeding, however oral absorption of naloxone is limited. The developmental and health benefits of breastfeeding should be considered along with the mother's clinical need for buprenorphine and naloxone sublingual film and any potential adverse effects on the breastfed child from the drug or from the underlying maternal condition.

### Clinical Considerations

Advise breastfeeding women taking buprenorphine products to monitor the infant for increased drowsiness and breathing difficulties.

### Data

Data were consistent from two studies (N=13) of breastfeeding infants whose mothers were maintained on sublingual doses of buprenorphine ranging from 2.4 to 24 mg/day, showing that the infants were exposed to less than 1% of the maternal daily dose.

In a study of six lactating women who were taking a median sublingual buprenorphine dose of 0.29 mg/kg/day 5 to 8 days after delivery, breast milk provided a median infant dose of 0.42 mcg/kg/day of buprenorphine and 0.33 mcg/kg/day of norbuprenorphine, equal to 0.2% and 0.12%, respectively, of the maternal weight-adjusted dose (relative dose/kg (%)) of norbuprenorphine was calculated from the assumption that buprenorphine and norbuprenorphine are equipotent).

Data from a study of seven lactating women who were taking a median sublingual buprenorphine dose of 7 mg/day an average of 1.12 months after delivery indicated that the mean milk concentrations ( $C_{avg}$ ) of buprenorphine and norbuprenorphine were 3.65 mcg/L and 1.94 mcg/L respectively. Based on the study data, and assuming milk consumption of 150 mL/kg/day, an exclusively breastfed infant would receive an estimated mean absolute infant dose (AID) of 0.55 mcg/kg/day of buprenorphine and 0.29 mcg/kg/day of norbuprenorphine, or a mean relative infant dose (RID) of 0.38% and 0.18%, respectively, of the maternal weight-adjusted dose.

### **8.3 Females and Males of Reproductive Potential**

#### Infertility

Chronic use of opioids may cause reduced fertility in females and males of reproductive potential. It is not known whether these effects on fertility are reversible [see *Adverse Reactions (6.2), Clinical Pharmacology (12.2), Nonclinical Toxicology (13.1)*].

### **8.4 Pediatric Use**

The safety and effectiveness of buprenorphine and naloxone sublingual film have not been established in pediatric patients. This product is not appropriate for the treatment of neonatal abstinence syndrome in neonates, because it contains naloxone, an opioid antagonist.

### **8.5 Geriatric Use**

Clinical studies of buprenorphine and naloxone sublingual film, SUBOXONE sublingual tablets, or SUBUTEX sublingual tablets did not include sufficient numbers of subjects aged 65 and over to determine whether they responded differently than younger subjects. Other reported clinical experience has not identified differences in responses between the elderly and younger patients. Due to possible decreased hepatic, renal, or cardiac function and of concomitant disease or other drug therapy in geriatric patients, the decision to prescribe buprenorphine and naloxone sublingual film should be made cautiously in individuals 65 years of age or older and these patients should be monitored for signs and symptoms of toxicity or overdose.

### **8.6 Hepatic Impairment**

The effect of hepatic impairment on the pharmacokinetics of buprenorphine and naloxone has been evaluated in a pharmacokinetic study. Both drugs are extensively metabolized in the liver. While no clinically significant changes have been observed in subjects with mild hepatic impairment; the plasma levels have been shown to be higher and half-life values have been shown to be longer for both buprenorphine and naloxone in subjects with moderate and severe hepatic impairment. The magnitude of the effects on naloxone are greater than that on buprenorphine in both moderately and severely impaired subjects. The difference in magnitude of the effects on naloxone and buprenorphine are greater in subjects with severe hepatic impairment than in subjects with moderate hepatic impairment, and therefore the clinical impact of these effects is likely to be greater in patients with severe hepatic impairment than in patients with moderate hepatic impairment. Buprenorphine/naloxone products should be avoided in patients with severe hepatic impairment and may not be appropriate for patients with moderate hepatic impairment [see *Warnings and Precautions (5.12), Clinical Pharmacology (12.3)*].

### **8.7 Renal Impairment**

No differences in buprenorphine pharmacokinetics were observed between 9 dialysis-dependent and 6 normal patients following IV administration of 0.3 mg buprenorphine. The effects of renal failure on naloxone pharmacokinetics are unknown.

## **9 DRUG ABUSE AND DEPENDENCE**

## 9.1 Controlled Substance

Buprenorphine and naloxone sublingual film contains buprenorphine, a Schedule III controlled substance under the Controlled Substances Act.

Under the Drug Addiction Treatment Act (DATA) codified at 21 U.S.C. 823(g), prescription use of this product in the treatment of opioid dependence is limited to healthcare providers who meet certain qualifying requirements, and who have notified the Secretary of Health and Human Services (HHS) of their intent to prescribe this product for the treatment of opioid dependence and have been assigned a unique identification number that must be included on every prescription.

## 9.2 Abuse

Buprenorphine, like morphine and other opioids, has the potential for being abused and is subject to criminal diversion. This should be considered when prescribing or dispensing buprenorphine in situations when the clinician is concerned about an increased risk of misuse, abuse, or diversion. Healthcare professionals should contact their state professional licensing board or state controlled substances authority for information on how to prevent and detect abuse or diversion of this product.

Patients who continue to misuse, abuse, or divert buprenorphine products or other opioids should be provided with or referred for more intensive and structured treatment.

Abuse of buprenorphine poses a risk of overdose and death. This risk is increased with the abuse of buprenorphine and alcohol and other substances, especially benzodiazepines.

The healthcare provider may be able to more easily detect misuse or diversion by maintaining records of medication prescribed including date, dose, quantity, frequency of refills, and renewal requests of medication prescribed.

Proper assessment of the patient, proper prescribing practices, periodic re-evaluation of therapy, and proper handling and storage of the medication are appropriate measures that help to limit abuse of opioid drugs.

## 9.3 Dependence

Buprenorphine is a partial agonist at the mu-opioid receptor and chronic administration produces physical dependence of the opioid type, characterized by moderate withdrawal signs and symptoms upon abrupt discontinuation or rapid taper. The withdrawal syndrome is typically milder than seen with full agonists and may be delayed in onset [*see Warnings and Precautions (5.7)*].

Neonatal opioid withdrawal syndrome (NOWS) is an expected and treatable outcome of prolonged use of opioids during pregnancy [*see Warnings and Precautions (5.5)*].

## 10 OVERDOSAGE

### Clinical Presentation

The manifestations of acute overdose include pinpoint pupils, sedation, hypotension, respiratory depression, and death.

### Treatment of Overdose

In the event of overdose, the respiratory and cardiac status of the patient should be monitored carefully. When respiratory or cardiac functions are depressed, primary attention should be given to the re-establishment of adequate respiratory exchange through provision of a patent airway and institution of assisted or controlled ventilation. Oxygen, IV fluids, vasopressors, and other supportive measures should be employed as indicated.

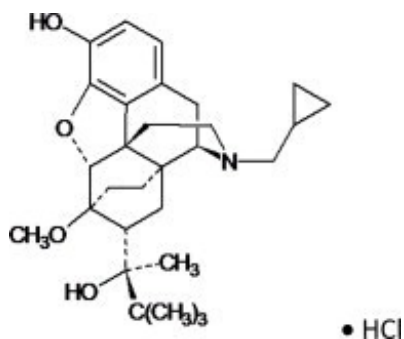
In the case of overdose, the primary management should be the re-establishment of adequate ventilation with mechanical assistance of respiration, if required. Naloxone may be of value for the management of

buprenorphine overdose. Higher than normal doses and repeated administration may be necessary. The long duration of action of buprenorphine and naloxone sublingual film should be taken into consideration when determining the length of treatment and medical surveillance needed to reverse the effects of an overdose. Insufficient duration of monitoring may put patients at risk.

## 11 DESCRIPTION

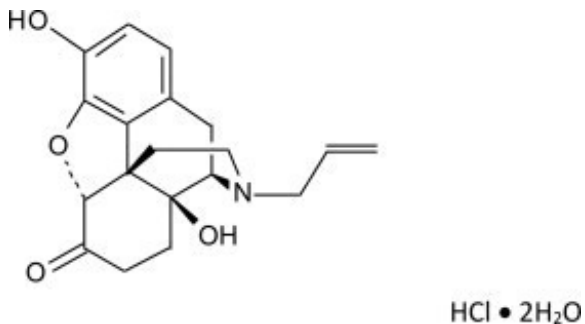
Buprenorphine and naloxone sublingual film is an orange film, imprinted with a logo identifying the product and strength in white ink. It contains buprenorphine HCl, a  $\mu$ -opioid receptor partial agonist, and a  $\kappa$ -opioid receptor antagonist, and naloxone HCl dihydrate, an opioid antagonist, at a ratio of 4:1 (ratio of free bases). It is intended for sublingual or buccal administration and is available in four dosage strengths, 2 mg buprenorphine with 0.5 mg naloxone, 4 mg buprenorphine with 1 mg naloxone, 8 mg buprenorphine with 2 mg naloxone and 12 mg buprenorphine with 3 mg naloxone. Each film also contains polyethylene oxide, hydroxypropyl methylcellulose, maltitol, acesulfame potassium, lime flavor, citric acid, sodium citrate, FD&C yellow #6, and white ink.

Chemically, buprenorphine HCl is (2S)-2-[17-Cyclopropylmethyl-4,5 $\alpha$ -epoxy-3-hydroxy-6-methoxy-6 $\alpha$ ,14-ethano-14 $\alpha$ -morphinan-7 $\alpha$ -yl]-3,3-dimethylbutan-2-ol hydrochloride. It has the following chemical structure:



Buprenorphine HCl has the molecular formula  $C_{29}H_{41}NO_4 \cdot HCl$  and the molecular weight is 504.10. It is a white or off-white crystalline powder, sparingly soluble in water, freely soluble in methanol, soluble in alcohol, and practically insoluble in cyclohexane.

Chemically, naloxone HCl dihydrate is 17-Allyl-4,5  $\alpha$ -epoxy-3, 14-dihydroxymorphinan-6-one hydrochloride dihydrate. It has the following chemical structure:



Naloxone hydrochloride dihydrate has the molecular formula  $C_{19}H_{21}NO_4 \cdot HCl \cdot 2H_2O$  and the molecular weight is 399.87. It is a white to slightly off-white powder and is freely soluble in water, soluble in alcohol, and practically insoluble in toluene and ether.

## 12 CLINICAL PHARMACOLOGY

## 12.1 Mechanism of Action

Buprenorphine and naloxone sublingual film contains buprenorphine and naloxone. Buprenorphine is a partial agonist at the mu-opioid receptor and an antagonist at the kappa-opioid receptor. Naloxone is a potent antagonist at mu opioid receptors and produces opioid withdrawal signs and symptoms in individuals physically dependent on full opioid agonists when administered parenterally.

## 12.2 Pharmacodynamics

### Subjective Effects

Comparisons of buprenorphine to full opioid agonists such as methadone and hydromorphone suggest that sublingual buprenorphine produces typical opioid agonist effects which are limited by a ceiling effect.

In opioid-experienced subjects who were not physically dependent, acute sublingual doses of buprenorphine/naloxone tablets produced opioid agonist effects which reached a maximum between doses of 8 mg/2 mg and 16 mg/4 mg buprenorphine/naloxone.

Opioid agonist ceiling-effects were also observed in a double-blind, parallel group, dose-ranging comparison of single doses of buprenorphine sublingual solution (1, 2, 4, 8, 16, or 32 mg), placebo and a full agonist control at various doses. The treatments were given in ascending dose order at intervals of at least one week to 16 opioid-experienced subjects who were not physically dependent. Both active drugs produced typical opioid agonist effects. For all measures for which the drugs produced an effect, buprenorphine produced a dose-related response. However, in each case, there was a dose that produced no further effect. In contrast, the highest dose of the full agonist control always produced the greatest effects. Agonist objective rating scores remained elevated for the higher doses of buprenorphine (8 mg to 32 mg) longer than for the lower doses and did not return to baseline until 48 hours after drug administration. The onset of effects appeared more rapidly with buprenorphine than with the full agonist control, with most doses nearing peak effect after 100 minutes for buprenorphine compared to 150 minutes for the full agonist control.

### Physiologic Effects

Buprenorphine in IV (2, 4, 8, 12 and 16 mg) and sublingual (12 mg) doses has been administered to opioid-experienced subjects who were not physically dependent to examine cardiovascular, respiratory, and subjective effects at doses comparable to those used for treatment of opioid dependence. Compared to placebo, there were no statistically significant differences among any of the treatment conditions for blood pressure, heart rate, respiratory rate, O<sub>2</sub> saturation, or skin temperature across time. Systolic BP was higher in the 8 mg group than placebo (3 hour AUC values). Minimum and maximum effects were similar across all treatments. Subjects remained responsive to low voice and responded to computer prompts. Some subjects showed irritability, but no other changes were observed.

The respiratory effects of sublingual buprenorphine were compared with the effects of methadone in a double-blind, parallel group, dose ranging comparison of single doses of buprenorphine sublingual solution (1, 2, 4, 8, 16, or 32 mg) and oral methadone (15, 30, 45, or 60 mg) in non-dependent, opioid-experienced volunteers. In this study, hypoventilation not requiring medical intervention was reported more frequently after buprenorphine doses of 4 mg and higher than after methadone. Both drugs decreased O<sub>2</sub> saturation to the same degree.

### Effect of Naloxone

Physiologic and subjective effects following acute sublingual administration of buprenorphine tablets and buprenorphine/naloxone tablets were similar at equivalent dose levels of buprenorphine. Naloxone had no clinically significant effect when administered by the sublingual route, although blood levels of the drug were measurable. Buprenorphine/naloxone, when administered sublingually to an opioid-dependent cohort, was recognized as an opioid agonist, whereas when administered intramuscularly,





|                                    |                       | Sublingual | Sublingual | Sublingual |                       | Sublingual | Sublingual | Sublingual |
|------------------------------------|-----------------------|------------|------------|------------|-----------------------|------------|------------|------------|
| 1 x 2 mg/0.5 mg                    | C <sub>max</sub>      | 22%        | 25%        | -          | C <sub>max</sub>      | -          | -          | -          |
|                                    | AUC <sub>0-last</sub> | -          | 19%        | -          | AUC <sub>0-last</sub> | -          | -          | -          |
| 2 x 2 mg/0.5 mg                    | C <sub>max</sub>      | -          | 21%        | 21%        | C <sub>max</sub>      | -          | 17%        | 21%        |
|                                    | AUC <sub>0-last</sub> | -          | 23%        | 16%        | AUC <sub>0-last</sub> | -          | 22%        | 24%        |
| 1 x 8 mg/2 mg                      | C <sub>max</sub>      | 28%        | 34%        | -          | C <sub>max</sub>      | 41%        | 54%        | -          |
|                                    | AUC <sub>0-last</sub> | 20%        | 25%        | -          | AUC <sub>0-last</sub> | 30%        | 43%        | -          |
| 1 x 12 mg/3 mg                     | C <sub>max</sub>      | 37%        | 47%        | -          | C <sub>max</sub>      | 57%        | 72%        | 9%         |
|                                    | AUC <sub>0-last</sub> | 21%        | 29%        | -          | AUC <sub>0-last</sub> | 45%        | 57%        | -          |
| 1 x 8 mg/2 mg plus 2 x 2 mg/0.5 mg | C <sub>max</sub>      | -          | 27%        | 13%        | C <sub>max</sub>      | 17%        | 38%        | 19%        |
|                                    | AUC <sub>0-last</sub> | -          | 23%        | -          | AUC <sub>0-last</sub> | -          | 30%        | 19%        |
| 1 x 16 mg/4 mg film                | C <sub>max</sub>      | 34%        | 29%        | 7%         | C <sub>max</sub>      | 44%        | 46%        | 9%         |
|                                    | AUC <sub>0-last</sub> | 32%        | -          | -          | AUC <sub>0-last</sub> | 49%        | 36%        | 3%         |

Note: 1. the 16 mg/4 mg strength film is not marketed; it is compositionally proportional to the 8 mg/2 mg strength film and has the same size of 2 x 8 mg/2 mg film. 2. – represents no change when the 90% confidence intervals for the geometric mean ratios of the C<sub>max</sub> and AUC<sub>0-last</sub> values are within the 80% to 125% limit. 3. There are no data for the 4 mg/1 mg strength film; it is compositionally proportional to 2 mg/0.5 mg strength film and has the same size of 2 x 2 mg/0.5 mg film strength.

### Distribution

Buprenorphine is approximately 96% protein bound, primarily to alpha and beta globulin.

Naloxone is approximately 45% protein bound, primarily to albumin.

### Elimination

Buprenorphine is metabolized and eliminated in urine and feces. Naloxone undergoes metabolism as well. When buprenorphine and naloxone sublingual film is administered sublingually or buccally, buprenorphine has a mean elimination half-life ranging from 24 to 42 hours and naloxone has a mean elimination half-life ranging from 2 to 12 hours.

### Metabolism

Buprenorphine undergoes both N-dealkylation to norbuprenorphine and glucuronidation. The N-dealkylation pathway is mediated primarily by the CYP3A4. Norbuprenorphine, the major metabolite, can further undergo glucuronidation. Norbuprenorphine has been found to bind opioid receptors *in vitro*; however, it has not been studied clinically for opioid-like activity. Naloxone undergoes direct glucuronidation to naloxone-3-glucuronide as well as N-dealkylation, and reduction of the 6-oxo group.

### Excretion

A mass balance study of buprenorphine showed complete recovery of radiolabel in urine (30%) and feces (69%) collected up to 11 days after dosing. Almost all of the dose was accounted for in terms of buprenorphine, norbuprenorphine, and two unidentified buprenorphine metabolites. In urine, most of buprenorphine and norbuprenorphine was conjugated (buprenorphine, 1% free and 9.4% conjugated; norbuprenorphine, 2.7% free and 11% conjugated). In feces, almost all of the buprenorphine and norbuprenorphine were free (buprenorphine, 33% free and 5% conjugated; norbuprenorphine, 21% free and 2% conjugated). Based on all studies performed with sublingually and buccally administered buprenorphine and naloxone sublingual film, buprenorphine has a mean elimination half-life from plasma ranging from 24 to 42 hours and naloxone has a mean elimination half-life from plasma ranging from 2 to 12 hours.

## Drug Interactions Studies

### *CYP3A4 Inhibitors and Inducers*

Buprenorphine has been found to be a CYP2D6 and CYP3A4 inhibitor and its major metabolite, norbuprenorphine, has been found to be a moderate CYP2D6 inhibitor in *in vitro* studies employing human liver microsomes. However, the relatively low plasma concentrations of buprenorphine and norbuprenorphine resulting from therapeutic doses are not expected to raise significant drug-drug interaction concerns [see *Drug Interactions (7)*].

### Specific Populations

#### *Hepatic Impairment*

In a pharmacokinetic study, the disposition of buprenorphine and naloxone were determined after administering a 2.0/0.5 mg SUBOXONE sublingual tablet in subjects with varied degrees of hepatic impairment as indicated by Child-Pugh criteria. The disposition of buprenorphine and naloxone in patients with hepatic impairment were compared to disposition in subjects with normal hepatic function.

In subjects with mild hepatic impairment, the changes in mean  $C_{max}$ ,  $AUC_{0-last}$ , and half-life values of both buprenorphine and naloxone were not clinically significant. No dosing adjustment is needed in patients with mild hepatic impairment.

For subjects with moderate and severe hepatic impairment, mean  $C_{max}$ ,  $AUC_{0-last}$ , and half-life values of both buprenorphine and naloxone were increased; the effects on naloxone are greater than that on buprenorphine (Table 6).

**Table 6. Changes in Pharmacokinetic Parameters in Subjects With Moderate and Severe Hepatic Impairment**

| Hepatic Impairment | PK Parameters  | Increase in buprenorphine compared to healthy subjects | Increase in naloxone compared to healthy subjects |
|--------------------|----------------|--|---|
| Moderate           | $C_{max}$      | 8%   | 170%  |
|                    | $AUC_{0-last}$ | 64%  | 218%  |
|                    | Half-life      | 35%  | 165%  |
| Severe             | $C_{max}$      | 72%  | 1030%   |
|                    | $AUC_{0-last}$ | 181%   | 1302%   |
|                    | Half-life      | 57%  | 122%  |

The difference in magnitude of the effects on naloxone and buprenorphine are greater in subjects with severe hepatic impairment than subjects with moderate hepatic impairment [see *Warnings and Precautions (5.12)*, *Use in Specific Populations (8.6)*].

#### *HCV infection*

In subjects with HCV infection but no sign of hepatic impairment, the changes in the mean  $C_{max}$ ,  $AUC_{0-last}$ , and half-life values of buprenorphine and naloxone were not clinically significant in comparison to healthy subjects without HCV infection.

## **13 NONCLINICAL TOXICOLOGY**

### **13.1 Carcinogenesis, Mutagenesis, Impairment of Fertility**

#### Carcinogenicity

Carcinogenicity data on buprenorphine and naloxone sublingual film are not available.

A carcinogenicity study of buprenorphine/naloxone (4:1 ratio of the free bases) was performed in

Alderley Park rats. Buprenorphine/naloxone was administered in the diet at doses of approximately 7, 31, and 123 mg/kg/day for 104 weeks (estimated exposure was approximately 4, 18, and 44 times the recommended human sublingual dose of 16 mg/4 mg buprenorphine/naloxone based on buprenorphine AUC comparisons). A statistically significant increase in Leydig cell adenomas was observed in all dose groups. No other drug-related tumors were noted.

Carcinogenicity studies of buprenorphine were conducted in Sprague-Dawley rats and CD-1 mice. Buprenorphine was administered in the diet to rats at doses of 0.6, 5.5, and 56 mg/kg/day (estimated exposure was approximately 0.4, 3, and 35 times the recommended human daily sublingual dose of 16 mg on a mg/m<sup>2</sup> basis) for 27 months. As in the buprenorphine/naloxone carcinogenicity study in rats, statistically significant dose-related increases in Leydig cell tumors occurred. In an 86 week study in CD-1 mice, buprenorphine was not carcinogenic at dietary doses up to 100 mg/kg/day (estimated exposure was approximately 30 times the recommended human daily sublingual dose of 16 mg on a mg/m<sup>2</sup> basis).

### Mutagenicity

The 4:1 combination of buprenorphine and naloxone was not mutagenic in a bacterial mutation assay (Ames test) using four strains of *S. typhimurium* and two strains of *E. coli*. The combination was not clastogenic in an *in vitro* cytogenetic assay in human lymphocytes or in an IV micronucleus test in the rat.

Buprenorphine was studied in a series of tests utilizing gene, chromosome, and DNA interactions in both prokaryotic and eukaryotic systems. Results were negative in yeast (*S. cerevisiae*) for recombinant, gene convertant, or forward mutations; negative in *Bacillus subtilis* “rec” assay, negative for clastogenicity in CHO cells, Chinese hamster bone marrow and spermatogonia cells, and negative in the mouse lymphoma L5178Y assay.

Results were equivocal in the Ames test: negative in studies in two laboratories, but positive for frame shift mutation at a high dose (5 mg/plate) in a third study. Results were positive in the Green-Tweets (*E. coli*) survival test, positive in a DNA synthesis inhibition (DSI) test with testicular tissue from mice, for both *in vivo* and *in vitro* incorporation of [<sup>3</sup>H]thymidine, and positive in unscheduled DNA synthesis (UDS) test using testicular cells from mice.

### Impairment of Fertility

Dietary administration of buprenorphine in the rat at dose levels of 500 ppm or greater (equivalent to approximately 47 mg/kg/day or greater; estimated exposure approximately 28 times the recommended human daily sublingual dose of 16 mg on a mg/m<sup>2</sup> basis) produced a reduction in fertility demonstrated by reduced female conception rates. A dietary dose of 100 ppm (equivalent to approximately 10 mg/kg/day; estimated exposure approximately 6 times the recommended human daily sublingual dose of 16 mg on a mg/m<sup>2</sup> basis) had no adverse effect on fertility.

## **16 HOW SUPPLIED / STORAGE AND HANDLING**

Buprenorphine and naloxone sublingual film is supplied as an orange rectangular film with a white printed logo in child-resistant polyester/foil laminated pouches:

- NDC 0781-7216-64 (buprenorphine 2 mg/naloxone 0.5 mg/film; content expressed in terms of free base, equivalent to 2.16 mg buprenorphine hydrochloride USP and 0.61 mg naloxone hydrochloride dihydrate USP) - 30 films per carton
- NDC 0781-7227-64 (buprenorphine 4 mg/naloxone 1 mg/film; content expressed in terms of free base, equivalent to 4.32 mg buprenorphine hydrochloride USP and 1.22 mg naloxone hydrochloride dihydrate USP) - 30 films per carton
- NDC 0781-7238-64 (buprenorphine 8 mg/naloxone 2 mg/film; content expressed in terms of free base, equivalent to 8.64 mg buprenorphine hydrochloride USP and 2.44 mg naloxone hydrochloride dihydrate USP) - 30 films per carton
- NDC 0781-7249-64 (buprenorphine 12 mg/naloxone 3 mg/film; content expressed in terms of free

base, equivalent to 12.96 mg buprenorphine hydrochloride USP and 3.66 mg naloxone hydrochloride dihydrate USP) - 30 films per carton

Store at 25°C (77°F), excursions permitted to 15-30°C (59-86°F) [see USP Controlled Room Temperature].

Store buprenorphine and naloxone sublingual film securely and out of sight and reach of children and dispose of properly [see *Patient Counseling Information (17)*].

## 17 PATIENT COUNSELING INFORMATION

Advise patients to read the FDA-approved patient labeling (Medication Guide).

### Storage and Disposal

Because of the risks associated with accidental ingestion, misuse, and abuse, advise patients to store buprenorphine and naloxone sublingual film securely, out of sight and reach of children, and in a location not accessible by others, including visitors to the home [see *Warnings and Precautions (5.1, 5.4), Drug Abuse and Dependence (9.2)*]. Inform patients that leaving buprenorphine and naloxone sublingual film unsecured can pose a deadly risk to others in the home.

Advise patients and caregivers that when medicines are no longer needed, they should be disposed of promptly. Expired, unwanted, or unused buprenorphine and naloxone sublingual film should be disposed of by removing the buprenorphine and naloxone sublingual film from the foil packaging, and flushing the unused medication down the toilet (if a drug take-back option is not readily available). Inform patients that they can visit [www.fda.gov/drugdisposal](http://www.fda.gov/drugdisposal) for a complete list of medicines recommended for disposal by flushing, as well as additional information on disposal of unused medicines.

### Safe Use

Before initiating treatment with buprenorphine and naloxone sublingual film, explain the points listed below to caregivers and patients. Instruct patients to read the Medication Guide each time buprenorphine and naloxone sublingual film is dispensed because new information may be available.

- Buprenorphine and naloxone sublingual film must be administered whole. Advise patients not to cut, chew, or swallow buprenorphine and naloxone sublingual film.
- Inform patients and caregivers that potentially fatal additive effects may occur if buprenorphine and naloxone sublingual film is used with benzodiazepines or other CNS depressants, including alcohol. Counsel patients that such medications should not be used concomitantly unless supervised by a health care provider [see *Warnings and Precautions (5.2, 5.3), Drug Interactions (7)*].
- Advise patients that buprenorphine and naloxone sublingual film contains an opioid that can be a target for people who abuse prescription medications or street drugs. Caution patients to keep their films in a safe place, and to protect them from theft.
- Instruct patients to keep buprenorphine and naloxone sublingual film in a secure place, out of the sight and reach of children. Accidental or deliberate ingestion by a child may cause respiratory depression that can result in death. Advise patients to seek medical attention immediately if a child is exposed to buprenorphine and naloxone sublingual film.
- Inform patients that opioids could cause a rare but potentially life-threatening condition resulting from concomitant administration of serotonergic drugs. Warn patients of the symptoms of serotonin syndrome and to seek medical attention right away if symptoms develop. Instruct patients to inform their healthcare providers if they are taking, or plan to take serotonergic medications [see *Drug Interactions (7)*].
- Inform patients that opioids could cause adrenal insufficiency, a potentially life-threatening condition. Adrenal insufficiency may present with non-specific symptoms and signs such as nausea, vomiting, anorexia, fatigue, weakness, dizziness, and low blood pressure. Advise patients to seek medical attention if they experience a constellation of these symptoms [see *Warnings and Precautions*

(5.6)].

- Advise patients to never give buprenorphine and naloxone sublingual film to anyone else, even if he or she has the same signs and symptoms. It may cause harm or death.
- Advise patients that selling or giving away this medication is against the law.
- Caution patients that buprenorphine and naloxone sublingual film may impair the mental or physical abilities required for the performance of potentially dangerous tasks such as driving or operating machinery. Caution should be taken especially during drug induction and dose adjustment and until individuals are reasonably certain that buprenorphine therapy does not adversely affect their ability to engage in such activities [see *Warnings and Precautions (5.13)*].
- Advise patients not to change the dosage of buprenorphine and naloxone sublingual film without consulting their healthcare provider.
- Advise patients to take buprenorphine and naloxone sublingual film once a day.
- Advise patients that if they miss a dose of buprenorphine and naloxone sublingual film they should take it as soon as they remember. If it is almost time for the next dose, they should skip the missed dose and take the next dose at the regular time.
- Inform patients that buprenorphine and naloxone sublingual film can cause drug dependence and that withdrawal signs and symptoms may occur when the medication is discontinued.
- Advise patients seeking to discontinue treatment with buprenorphine for opioid dependence to work closely with their healthcare provider on a tapering schedule and inform them of the potential to relapse to illicit drug use associated with discontinuation of opioid agonist/partial agonist medication-assisted treatment.
- Advise patients that, like other opioids, buprenorphine and naloxone sublingual film may produce orthostatic hypotension in ambulatory individuals [see *Warnings and Precautions (5.14)*].
- Advise patients to inform their healthcare provider if any other prescription medications, over-the-counter medications, or herbal preparations are prescribed or currently being used [see *Drug Interactions (7)*].
- Advise women that if they are pregnant while being treated with buprenorphine and naloxone sublingual film, the baby may have signs of withdrawal at birth and that withdrawal is treatable [see *Warnings and Precautions (5.5)*, *Use in Specific Populations (8.1)*].
- Advise women who are breastfeeding to monitor the infant for drowsiness and difficulty breathing [see *Use in Specific Populations (8.2)*].
- Inform patients that chronic use of opioids may cause reduced fertility. It is not known whether these effects on fertility are reversible [see *Use in Specific Populations (8.3)*].
- Advise patients to inform their family members that, in the event of emergency, the treating healthcare provider or emergency room staff should be informed that the patient is physically dependent on an opioid and that the patient is being treated with buprenorphine and naloxone sublingual film.

Manufactured for Sandoz Inc.  
Princeton, NJ 08540 by:  
Aquestive Therapeutics,  
Warren, NJ 07059

SUBOXONE® and SUBUTEX® are registered trademarks of Indivior UK Ltd.

### MEDICATION GUIDE

#### **Buprenorphine (byoo-pre-NOR-feen) and Naloxone (nal-OX-own) Sublingual Film for sublingual or buccal administration (CIII)**

#### **IMPORTANT:**

Keep buprenorphine and naloxone sublingual film in a secure place away from children. Accidental use by a child is a medical emergency and can result in death. If a child accidentally uses buprenorphine and naloxone sublingual film, get emergency help right away.

Read this Medication Guide that comes with buprenorphine and naloxone sublingual film before you start taking it and each time you get a refill. There may be new information. This Medication Guide does not take the place of talking to your doctor. Talk to your doctor or pharmacist if you have questions about buprenorphine and naloxone sublingual film.

Share the important information in this Medication Guide with members of your household.

### **What is the most important information I should know about buprenorphine and naloxone sublingual film?**

- Buprenorphine is a medicine in buprenorphine and naloxone sublingual film that can cause serious and life-threatening problems, especially if you take or use certain other medicines or drugs. Call your healthcare provider right away or get emergency help if you:
  - feel faint or dizzy
  - have mental changes such as confusion
  - have slower breathing than you normally have
  - have severe sleepiness
  - have blurred vision
  - have problems with coordination
  - have slurred speech
  - cannot think well or clearly
  - have slowed reflexes
  - have a high body temperature
  - feel agitated
  - have stiff muscles
  - have trouble walking

These can be signs of an overdose or other serious problems.

- Do not switch from buprenorphine and naloxone sublingual film to other medicines that contain buprenorphine without talking with your doctor. The amount of buprenorphine in a dose of buprenorphine and naloxone sublingual film is not the same as the amount of buprenorphine in other medicines that contain buprenorphine. Your doctor will prescribe a starting dose of buprenorphine and naloxone sublingual film that may be different than other buprenorphine containing medicines you may have been taking.
- Buprenorphine and naloxone sublingual film contains an opioid that can cause physical dependence.
  - Do not stop taking buprenorphine and naloxone sublingual film without talking to your doctor. You could become sick with uncomfortable withdrawal signs and symptoms because your body has become used to this medicine.
  - Physical dependence is not the same as drug addiction.
  - Buprenorphine and naloxone sublingual film is not for occasional or “as needed” use.
- An overdose and even death can happen if you take benzodiazepines, sedatives, tranquilizers, antidepressants, or alcohol while using buprenorphine and naloxone sublingual film. Ask your doctor what you should do if you are taking one of these.
- Call a doctor or get emergency help right away if you:
  - Feel sleepy and uncoordinated
  - Have blurred vision
  - Have slurred speech
  - Cannot think well or clearly
  - Have slowed reflexes and breathing
- Do not inject (“shoot up”) or snort buprenorphine and naloxone sublingual film.
  - Injecting buprenorphine and naloxone sublingual film may cause life-threatening infections and other serious health problems.
  - Crushing and/or dissolving buprenorphine and naloxone sublingual film and then injecting it (“shooting up”) could cause serious withdrawal symptoms (sudden, serious, withdrawal symptoms such as pain, cramps, vomiting and diarrhea) in people who are physically dependent on other opioids.
  - Snorting buprenorphine and naloxone sublingual film could cause precipitated withdrawal.

- In an emergency, have family members tell emergency department staff that you are physically dependent on an opioid and are being treated with buprenorphine and naloxone sublingual film.
- Never give anyone else your buprenorphine and naloxone sublingual film. They could die from taking it. Selling or giving away buprenorphine and naloxone sublingual film is against the law.
- Store buprenorphine and naloxone sublingual film securely, out of sight and reach of children, and in a location not accessible by others, including visitors to the home.

### **What is buprenorphine and naloxone sublingual film?**

- Buprenorphine and naloxone sublingual film is a prescription medicine used to treat adults who are addicted to (dependent on) opioid drugs (either prescription or illegal) as part of a complete treatment program that also includes counseling and behavioral therapy.

Buprenorphine and naloxone sublingual film is a controlled substance (CIII) because it contains buprenorphine, which can be a target for people who abuse prescription medicines or street drugs. Keep your buprenorphine and naloxone sublingual film in a safe place to protect it from theft. Never give your buprenorphine and naloxone sublingual film to anyone else; it can cause death or harm them. Selling or giving away this medicine is against the law.

- It is not known if buprenorphine and naloxone sublingual film is safe or effective in children.

### **Who should not take buprenorphine and naloxone sublingual film?**

**Do not take buprenorphine and naloxone sublingual film** if you are allergic to buprenorphine or naloxone.

### **What should I tell my doctor before taking buprenorphine and naloxone sublingual film?**

**Buprenorphine and naloxone sublingual film may not be right for you. Before taking buprenorphine and naloxone sublingual film, tell your doctor if you:**

- Have liver or kidney problems
- Have trouble breathing or lung problems
- Have an enlarged prostate gland (men)
- Have a head injury or brain problem
- Have problems urinating
- Have a curve in your spine that affects your breathing
- Have gallbladder problems
- Have adrenal gland problems
- Have Addison's disease
- Have low thyroid (hypothyroidism)
- Have a history of alcoholism
- Have mental problems such as hallucinations (seeing or hearing things that are not there)
- Have any other medical condition
- Are pregnant or plan to become pregnant. If you take buprenorphine and naloxone sublingual film while pregnant, your baby may have signs of opioid withdrawal at birth. Neonatal opioid withdrawal syndrome (NOWS) is an expected and treatable outcome of prolonged use of opioids during pregnancy. Talk to your doctor if you are pregnant or plan to become pregnant.
- Are breastfeeding or plan to breastfeed. Buprenorphine and naloxone sublingual film can pass into your milk and may harm your baby. Talk to your doctor about the best way to feed your baby if you take buprenorphine and naloxone sublingual film. Monitor your baby for increased sleepiness and breathing problems.

**Tell your doctor about all the medicines you take**, including prescription and over-the-counter medicines, vitamins, and herbal supplements. Buprenorphine and naloxone sublingual film may affect the way other medicines work, and other medicines may affect how buprenorphine and naloxone sublingual film works. Some medicines may cause serious or life-threatening medical problems when taken with

buprenorphine and naloxone sublingual film.

Sometimes the doses of certain medicines and buprenorphine and naloxone sublingual film may need to be changed if used together. Do not take any medicine while using buprenorphine and naloxone sublingual film until you have talked with your doctor. Your doctor will tell you if it is safe to take other medicines while you are taking buprenorphine and naloxone sublingual film.

**Be especially careful about taking other medicines that may make you sleepy**, such as pain medicines, tranquilizers, antidepressant medicines, sleeping pills, anxiety medicines or antihistamines. Know the medicines you take. Keep a list of them to show your doctor or pharmacist each time you get a new medicine.

#### **How should I take buprenorphine and naloxone sublingual film?**

- Always take buprenorphine and naloxone sublingual film exactly as your doctor tells you. Your doctor may change your dose after seeing how it affects you. Do not change your dose unless your doctor tells you to change it.
- Do not take buprenorphine and naloxone sublingual film more often than prescribed by your doctor.
- Take buprenorphine and naloxone sublingual film 1 time a day.
- When you are beginning treatment, take buprenorphine and naloxone sublingual film only under the tongue (sublingual administration).
- After a few days, you can choose whether you will take buprenorphine and naloxone sublingual film on the inside of your cheek (buccal administration) or by sublingual administration.
- Buprenorphine and naloxone sublingual film must be taken whole. Do not cut, chew, or swallow buprenorphine and naloxone sublingual film.
- Your doctor should show you how to take buprenorphine and naloxone sublingual film the right way.
- Each buprenorphine and naloxone sublingual film comes in a sealed child-resistant foil pouch. Do not open the foil pouch until you are ready to use it.

#### **Taking buprenorphine and naloxone sublingual film:**

- To open your buprenorphine and naloxone sublingual film foil pouch, fold along the dotted line (see Figure 1).



Figure 1

- Tear down at slit or cut with scissors along the arrow (see Figure 2).





Figure 2

- Before taking buprenorphine and naloxone sublingual film, drink water to moisten your mouth. This helps the film dissolve more easily.

**To take buprenorphine and naloxone sublingual film under your tongue (sublingual administration):**

- Hold the film between two fingers by the outside edges.
- **Place the buprenorphine and naloxone sublingual film under your tongue**, close to the base either to the left or right of the center (see Figure 3).



Figure 3

- If your doctor tells you to take 2 films at a time, place the second film under your tongue on the opposite side. Avoid letting the films touch.
- Keep the films in place until they have completely dissolved.
- If your doctor tells you to take a third film, place it under your tongue on either side after the first 2 films have dissolved.

**To take buprenorphine and naloxone sublingual film on the inside of your cheek (buccal administration):**

- Hold the film between two fingers by the outside edges.
- Place one film on the inside of your right or left cheek (see Figure 4).

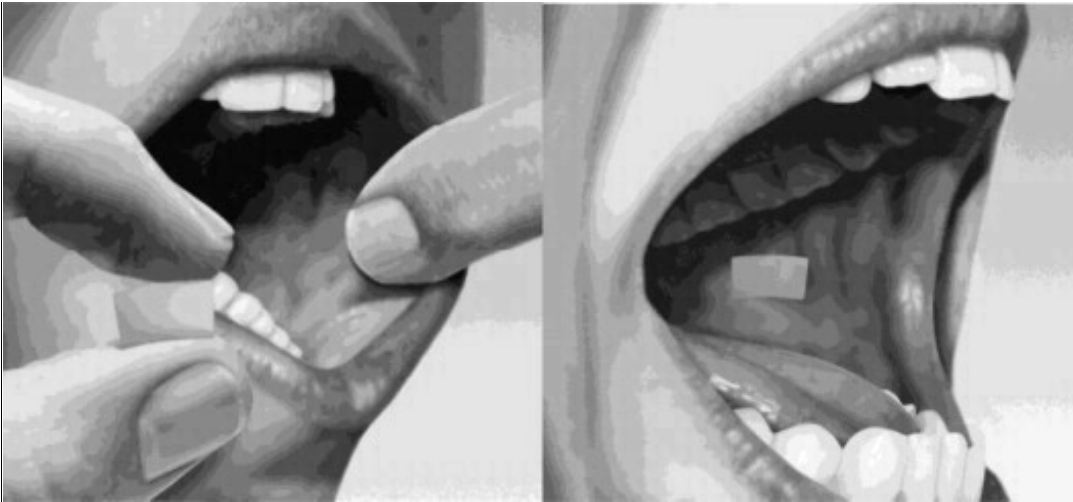


Figure 4

- If your doctor tells you to take 2 films at a time, place the other film on the inside of the opposite cheek.
- Keep the films in place until they have completely dissolved.
- If your doctor tells you to take a third film, place it on the inside of your right or left cheek after the first 2 films have dissolved.
- While buprenorphine and naloxone sublingual film is dissolving, do not chew or swallow the film because the medicine will not work as well.
- Talking while the film is dissolving can affect how well the medicine in buprenorphine and naloxone sublingual film is absorbed.
- If you miss a dose of buprenorphine and naloxone sublingual film, take your medicine when you remember. If it is almost time for your next dose, skip the missed dose and take the next dose at your regular time. Do not take 2 doses at the same time unless your doctor tells you to. If you are not sure about your dosing, call your doctor.
- Do not stop taking buprenorphine and naloxone sublingual film suddenly. You could become sick and have withdrawal symptoms because your body has become used to the medicine. Physical dependence is not the same as drug addiction. Your doctor can tell you more about the differences between physical dependence and drug addiction. To have fewer withdrawal symptoms, ask your doctor how to stop using buprenorphine and naloxone sublingual film the right way.
- **If you take too much buprenorphine and naloxone sublingual film or overdose, call Poison Control or get emergency medical help right away.**

#### **What should I avoid while taking buprenorphine and naloxone sublingual film?**

- **Do not drive, operate heavy machinery, or perform any other dangerous activities until you know how this medication affects you.** Buprenorphine can cause drowsiness and slow reaction times. This may happen more often in the first few weeks of treatment when your dose is being changed, but can also happen if you drink alcohol or take other sedative drugs when you take buprenorphine and naloxone sublingual film.
- **You should not drink alcohol while using buprenorphine and naloxone sublingual film,** as this can lead to loss of consciousness or even death.

#### **What are the possible side effects of buprenorphine and naloxone sublingual film?**

**Buprenorphine and naloxone sublingual film can cause serious side effects, including:**

- See “**What is the most important information I should know about buprenorphine and naloxone sublingual film?**”
- **Respiratory problems.** You have a higher risk of death and coma if you take **buprenorphine and naloxone** sublingual film with other medicines, such as benzodiazepines.
- **Sleepiness, dizziness, and problems with coordination**

- **Dependency or abuse**
- **Liver problems.** Call your doctor right away if you notice any of these signs of liver problems: Your skin or the white part of your eyes turning yellow (jaundice), urine turning dark, stools turning light in color, you have less of an appetite, or you have stomach (abdominal) pain or nausea. Your doctor should do tests before you start taking and while you take buprenorphine and naloxone sublingual film.
- **Allergic reaction.** You may have a rash, hives, swelling of the face, wheezing, or a loss of blood pressure and consciousness. Call a doctor or get emergency help right away.
- **Opioid withdrawal.** This can include: shaking, sweating more than normal, feeling hot or cold more than normal, runny nose, watery eyes, goose bumps, diarrhea, vomiting, and muscle aches. Tell your doctor if you develop any of these symptoms.
- **Decrease in blood pressure.** You may feel dizzy if you get up too fast from sitting or lying down.

**Common side effects of buprenorphine and naloxone sublingual film include:**

- |  |   |
|--|---|
| • Nausea   | • Intoxication (feeling lightheaded or drunk) |
| • Vomiting   | • Disturbance in attention                    |
| • Drug withdrawal syndrome                         | • Irregular heart beat (palpitations)         |
| • Headache   | • Decrease in sleep (insomnia)                |
| • Sweating   | • Blurred vision                              |
| • Numb mouth                                       | • Back pain                                   |
| • Constipation                                     | • Fainting                                    |
| • Swollen and/or painful tongue                    | • Dizziness                                   |
| • The inside of your mouth is more red than normal | • Sleepiness                                  |

Tell your doctor about any side effect that bothers you or that does not go away.

These are not all the possible side effects of buprenorphine and naloxone sublingual film. For more information, ask your doctor or pharmacist.

Call your doctor for medical advice about side effects. You may report side effects to FDA at 1-800-FDA-1088.

**How should I store buprenorphine and naloxone sublingual film?**

- Store buprenorphine and naloxone sublingual film at room temperature between 68°F to 77°F (20°C to 25°C).
- **Keep buprenorphine and naloxone sublingual film in a safe place, out of the sight and reach of children.**

**How should I dispose of unused buprenorphine and naloxone sublingual film?**

- Dispose of unused buprenorphine and naloxone sublingual film as soon as you no longer need them.
- Dispose of expired, unwanted or unused buprenorphine and naloxone sublingual film by removing the buprenorphine and naloxone sublingual film from the foil packaging, and promptly flushing down the toilet (if a drug take-back option is not readily available). Do not flush the buprenorphine and naloxone sublingual film foil pouch down the toilet. Visit [www.fda.gov/drugdisposal](http://www.fda.gov/drugdisposal) for additional information on disposal of unused medicines.

If you need help with disposal of buprenorphine and naloxone sublingual film, call 1-877-782-6966.

**General information about the safe and effective use of buprenorphine and naloxone sublingual film.**

Medicines are sometimes prescribed for purposes other than those listed in a Medication Guide. Do not take buprenorphine and naloxone sublingual film for a condition for which it was not prescribed. Do not give buprenorphine and naloxone sublingual film to other people, even if they have the same symptoms you have. It may harm them and it is against the law.

This Medication Guide summarizes the most important information about buprenorphine and naloxone

sublingual film. If you would like more information, talk to your doctor or pharmacist. You can ask your doctor or pharmacist for information that is written for health professionals.

For more information, call 1-877-782-6966.

**What are the ingredients in buprenorphine and naloxone sublingual film?**

**Active ingredients:** buprenorphine and naloxone.

**Inactive ingredients:** polyethylene oxide, hydroxypropyl methylcellulose, maltitol, acesulfame potassium, lime flavor, citric acid, sodium citrate, FD&C yellow #6, and white ink.

Manufactured for Sandoz Inc. Princeton, NJ 08540 by Aquestive Therapeutics, Warren, NJ 07059

This Medication Guide has been approved by the U.S. Food and Drug Administration.

Revised: 10/2019

**Principal Display Panel - Buprenorphine and Naloxone Sublingual Film 2 mg/0.5 mg Carton Label**

NDC 0781-7216-64

**Buprenorphine and  
Naloxone Sublingual Film**

**CIII**

**2 mg/0.5 mg**

Rx only

30 Pouches each containing 1 Sublingual Film

**SANDOZ**

a Novartis company



**Principal Display Panel - Buprenorphine and Naloxone Sublingual Film 2 mg/0.5 mg Pouch Label**  
 NDC 0781-7216-06  
 Buprenorphine and



# Naloxone Sublingual Film


CIII

2 mg/0.5 mg

Rx only

1 Sublingual Film

SANDOZ




NDC 0781-7216-06

## Buprenorphine and Naloxone Sublingual Film

**2 mg/0.5 mg**

Do not cut, chew or swallow sublingual film.  
Children who accidentally take Buprenorphine and Naloxone Sublingual Film will need emergency medical care. Keep Buprenorphine and Naloxone Sublingual Film out of the reach of children.

Rx only      1 Sublingual Film

 **SANDOZ**

**TO OPEN:** Fold along dotted line and tear down slit or cut with scissors along the arrow.

**Taking Buprenorphine and Naloxone Sublingual Film**

- If directed to use 2 films, place films on opposite sides under the tongue or inside the cheek. Avoid letting films touch
- Keep in place until fully dissolved
- If told to use a third film, use as directed after the first 2 films have dissolved
- See package insert for dosing information
- Always take as prescribed

**Sublingual Administration:**

- Place film under tongue (close to the base on right or left side)

**Buccal Administration:**

- Place film on inside of right or left cheek

**Store at controlled room temperature 77°F (25°C). Children who accidentally take Buprenorphine and Naloxone Sublingual Film will need emergency medical care. Keep Buprenorphine and Naloxone Sublingual Film out of the reach of children. 02-2016M**

Manufactured for Sandoz Inc.  
Princeton, NJ 08540 by  
Monosol Rx LLC, Warren, NJ 07059

10731      IND00593

Principal Display Panel - Buprenorphine and Naloxone Sublingual Film 4 mg/1 mg Carton Label

NDC 0781-7227-64

Buprenorphine and

**Naloxone Sublingual Film**

**CIII**

**4 mg/1 mg**

Rx only

30 Pouches each containing 1 Sublingual Film

**SANDOZ**

a Novartis company





# Naloxone Sublingual Film

CIII

4 mg/1 mg

Rx only

1 Sublingual Film

SANDOZ

a Novartis company

NDC 0781-7227-06

# Buprenorphine and Naloxone Sublingual Film

**4 mg/1 mg**

Do not cut, chew or swallow sublingual film.  
Children who accidentally take Buprenorphine and Naloxone Sublingual Film will need emergency medical care. Keep Buprenorphine and Naloxone Sublingual Film out of the reach of children.

Rx only      1 Sublingual Film

 **SANDOZ**

**↑ TO OPEN:** Fold along dotted line and tear down slit or cut with scissors along the arrow.

### Taking Buprenorphine and Naloxone Sublingual Film

- If directed to use 2 films, place films on opposite sides under the tongue or inside the cheek. Avoid letting films touch
- Keep in place until fully dissolved
- If told to use a third film, use as directed after the first 2 films have dissolved
- See package insert for dosing information
- Always take as prescribed

### Sublingual Administration:

- Place film under tongue (close to the base on right or left side)

### Buccal Administration:

- Place film on inside of right or left cheek

**Store at controlled room temperature 77°F (25°C). Children who accidentally take Buprenorphine and Naloxone Sublingual Film will need emergency medical care. Keep Buprenorphine and Naloxone Sublingual Film out of the reach of children. 02-2016M**

Manufactured for Sandoz Inc.  
Princeton, NJ 08540 by  
Monosol Rx LLC, Warren, NJ 07059

10732      IND00594

Principal Display Panel - Buprenorphine and Naloxone Sublingual Film 8 mg/2 mg Carton Label

NDC 0781-7238-64

**Buprenorphine and  
Naloxone Sublingual Film**

**CIII**

**8 mg/2 mg**

Rx only

30 Pouches each containing 1 Sublingual Film

**SANDOZ**

a Novartis company



**Principal Display Panel - Buprenorphine and Naloxone Sublingual Film 8 mg/2 mg Pouch Label**

NDC 0781-7238-06

**Buprenorphine and**



# Naloxone Sublingual Film

CIII

8 mg/2 mg

Rx only

1 Sublingual Film

SANDOZ


NDC 0781-7238-06

# Buprenorphine and Naloxone Sublingual Film

**8 mg/2 mg**

Do not cut, chew or swallow sublingual film.  
Children who accidentally take Buprenorphine and Naloxone Sublingual Film will need emergency medical care. Keep Buprenorphine and Naloxone Sublingual Film out of the reach of children.

Rx only      1 Sublingual Film

 **SANDOZ**

**TO OPEN:** Fold along dotted line and tear down slit or cut with scissors along the arrow.

**Taking Buprenorphine and Naloxone Sublingual Film**

- If directed to use 2 films, place films on opposite sides under the tongue or inside the cheek. Avoid letting films touch
- Keep in place until fully dissolved
- If told to use a third film, use as directed after the first 2 films have dissolved
- See package insert for dosing information
- Always take as prescribed

**Sublingual Administration:**

- Place film under tongue (close to the base on right or left side)

**Buccal Administration:**

- Place film on inside of right or left cheek

**Store at controlled room temperature 77°F (25°C). Children who accidentally take Buprenorphine and Naloxone Sublingual Film will need emergency medical care. Keep Buprenorphine and Naloxone Sublingual Film out of the reach of children. 02-2016M**

Manufactured for Sandoz Inc.  
Princeton, NJ 08540 by  
Monosol Rx LLC, Warren, NJ 07059

10733      IND00595

## Principal Display Panel - Buprenorphine and Naloxone Sublingual Film 12 mg/3 mg Carton Label

NDC 0781-7249-64

Buprenorphine and

**Naloxone Sublingual Film**

**CIII**

**12 mg/3 mg**

Rx only

30 Pouches each containing 1 Sublingual Film

**SANDOZ**

a Novartis company



**Principal Display Panel - Buprenorphine and Naloxone Sublingual Film 12 mg/3 mg Pouch Label**  
 NDC 0781-7249-06  
**Buprenorphine and Naloxone Sublingual Film**



# Naloxone Sublingual Film

CIII

12 mg/3 mg

Rx only

1 Sublingual Film

**SANDOZ**

a Novartis company

NDC 0781-7249-06

## Buprenorphine and Naloxone Sublingual Film



**12 mg/3 mg**

Do not cut, chew or swallow sublingual film.

Children who accidentally take Buprenorphine and Naloxone Sublingual Film will need emergency medical care. Keep Buprenorphine and Naloxone Sublingual Film out of the reach of children.

Rx only

1 Sublingual Film



**SANDOZ**

**TO OPEN:** Fold along dotted line and tear down slit or cut with scissors along the arrow.

### Taking Buprenorphine and Naloxone Sublingual Film

- If directed to use 2 films, place films on opposite sides under the tongue or inside the cheek. Avoid letting films touch
- Keep in place until fully dissolved
- If told to use a third film, use as directed after the first 2 films have dissolved
- See package insert for dosing information
- Always take as prescribed

### Sublingual Administration:

— Place film under tongue (close to the base on right or left side)

### Buccal Administration:

— Place film on inside of right or left cheek

**Store at controlled room temperature**

**77°F (25°C). Children who accidentally**

**take Buprenorphine and Naloxone**

**Sublingual Film will need emergency**

**medical care. Keep Buprenorphine and**

**Naloxone Sublingual Film out of**

**the reach of children. 02-2016M**

Manufactured for Sandoz Inc.

Princeton, NJ 08540 by

Monosol Rx LLC, Warren, NJ 07059

10734

IND00596

## BUPRENORPHINE AND NALOXONE

buprenorphine hydrochloride, naloxone hydrochloride film, soluble

**Product Information**

|                                |                         |                           |               |
|--------------------------------|-------------------------|---------------------------|---------------|
| <b>Product Type</b>            | HUMAN PRESCRIPTION DRUG | <b>Item Code (Source)</b> | NDC:0781-7216 |
| <b>Route of Administration</b> | SUBLINGUAL, BUCCAL      | <b>DEA Schedule</b>       | CIII          |

**Active Ingredient/Active Moiety**

| <b>Ingredient Name</b>  | <b>Basis of Strength</b> | <b>Strength</b> |
|---|--------------------------|-----------------|
| <b>buprenorphine hydrochloride</b> (UNII: 56W8MW3EN1) (buprenorphine - UNII:40D3SCR4GZ) | buprenorphine            | 2 mg            |
| <b>naloxone hydrochloride</b> (UNII: F850569PQR) (naloxone - UNII:36B82AMQ7N)           | naloxone                 | 0.5 mg          |

**Inactive Ingredients**

| <b>Ingredient Name</b>                                     | <b>Strength</b> |
|--|-----------------|
| <b>POLYETHYLENE GLYCOL, UNSPECIFIED</b> (UNII: 3WJQ0SDW1A) |                 |
| <b>HYPROMELLOSES</b> (UNII: 3NXW29V3WO)                    |                 |
| <b>maltitol</b> (UNII: D65DG142WK)                         |                 |
| <b>acesulfame potassium</b> (UNII: 23OV73Q5G9)             |                 |
| <b>citric acid monohydrate</b> (UNII: 2968PHW8QP)          |                 |
| <b>sodium citrate</b> (UNII: 1Q73Q2JULR)                   |                 |
| <b>FD&amp;C yellow no. 6</b> (UNII: H77VEI93A8)            |                 |

**Packaging**

| # | <b>Item Code</b> | <b>Package Description</b>                      | <b>Marketing Start Date</b> | <b>Marketing End Date</b> |
|---|------------------|---|-----------------------------|---------------------------|
| 1 | NDC:0781-7216-64 | 30 in 1 CARTON                                  | 02/19/2019                  | 04/30/2021                |
| 1 | NDC:0781-7216-06 | 1 in 1 POUCH; Type 0: Not a Combination Product |                             |                           |

**Marketing Information**

| <b>Marketing Category</b> | <b>Application Number or Monograph Citation</b> | <b>Marketing Start Date</b> | <b>Marketing End Date</b> |
|---------------------------|---|-----------------------------|---------------------------|
| NDA authorized generic    | NDA022410                                       | 02/19/2019                  | 04/30/2021                |

**BUPRENORPHINE AND NALOXONE**

buprenorphine hydrochloride, naloxone hydrochloride film, soluble

**Product Information**

|                                |                         |                           |               |
|--------------------------------|-------------------------|---------------------------|---------------|
| <b>Product Type</b>            | HUMAN PRESCRIPTION DRUG | <b>Item Code (Source)</b> | NDC:0781-7227 |
| <b>Route of Administration</b> | SUBLINGUAL, BUCCAL      | <b>DEA Schedule</b>       | CIII          |

**Active Ingredient/Active Moiety**

| <b>Ingredient Name</b>  | <b>Basis of Strength</b> | <b>Strength</b> |
|---|--------------------------|-----------------|
| <b>buprenorphine hydrochloride</b> (UNII: 56W8MW3EN1) (buprenorphine - UNII:40D3SCR4GZ) | buprenorphine            | 4 mg            |
| <b>naloxone hydrochloride</b> (UNII: F850569PQR) (naloxone - UNII:36B82AMQ7N)           | naloxone                 | 1 mg            |



## Inactive Ingredients

| Ingredient Name                                     | Strength |
|---|----------|
| POLYETHYLENE GLYCOL, UNSPECIFIED (UNII: 3WJQ0SDW1A) |          |
| HYPROMELLOSES (UNII: 3NXW29V3WO)                    |          |
| maltitol (UNII: D65DG142WK)                         |          |
| acesulfame potassium (UNII: 23OV73Q5G9)             |          |
| citric acid monohydrate (UNII: 2968PHW8QP)          |          |
| sodium citrate (UNII: 1Q73Q2JULR)                   |          |
| FD&C yellow no. 6 (UNII: H77VEI93A8)                |          |

## Packaging

| # | Item Code        | Package Description                             | Marketing Start Date | Marketing End Date |
|---|------------------|---|----------------------|--------------------|
| 1 | NDC:0781-7227-64 | 30 in 1 CARTON                                  | 02/19/2019           | 04/30/2021         |
| 1 | NDC:0781-7227-06 | 1 in 1 POUCH; Type 0: Not a Combination Product |                      |                    |

## Marketing Information

| Marketing Category     | Application Number or Monograph Citation | Marketing Start Date | Marketing End Date |
|------------------------|--|----------------------|--------------------|
| NDA authorized generic | NDA022410                                | 02/19/2019           | 04/30/2021         |

## BUPRENORPHINE AND NALOXONE

buprenorphine hydrochloride, naloxone hydrochloride film, soluble

### Product Information

|                         |                         |                    |               |
|-------------------------|-------------------------|--------------------|---------------|
| Product Type            | HUMAN PRESCRIPTION DRUG | Item Code (Source) | NDC:0781-7238 |
| Route of Administration | SUBLINGUAL, BUCCAL      | DEA Schedule       | CIII          |

### Active Ingredient/Active Moiety

| Ingredient Name  | Basis of Strength | Strength |
|--|-------------------|----------|
| buprenorphine hydrochloride (UNII: 56W8MW3EN1) (buprenorphine - UNII:40D3SCR4GZ) | buprenorphine     | 8 mg     |
| naloxone hydrochloride (UNII: F850569PQR) (naloxone - UNII:36B82AMQ7N)           | naloxone          | 2 mg     |

## Inactive Ingredients

| Ingredient Name                                     | Strength |
|---|----------|
| POLYETHYLENE GLYCOL, UNSPECIFIED (UNII: 3WJQ0SDW1A) |          |
| HYPROMELLOSES (UNII: 3NXW29V3WO)                    |          |
| maltitol (UNII: D65DG142WK)                         |          |
| acesulfame potassium (UNII: 23OV73Q5G9)             |          |
| citric acid monohydrate (UNII: 2968PHW8QP)          |          |
| sodium citrate (UNII: 1Q73Q2JULR)                   |          |

FD&C yellow no. 6 (UNII: H77VEI93A8)

### Packaging

| # | Item Code        | Package Description                             | Marketing Start Date | Marketing End Date |
|---|------------------|---|----------------------|--------------------|
| 1 | NDC:0781-7238-64 | 30 in 1 CARTON                                  | 02/19/2019           | 04/30/2021         |
| 1 | NDC:0781-7238-06 | 1 in 1 POUCH; Type 0: Not a Combination Product |                      |                    |

### Marketing Information

| Marketing Category     | Application Number or Monograph Citation | Marketing Start Date | Marketing End Date |
|------------------------|--|----------------------|--------------------|
| NDA authorized generic | NDA022410                                | 02/19/2019           | 04/30/2021         |

## BUPRENORPHINE AND NALOXONE

buprenorphine hydrochloride, naloxone hydrochloride film, soluble

### Product Information

|                         |                         |                    |               |
|-------------------------|-------------------------|--------------------|---------------|
| Product Type            | HUMAN PRESCRIPTION DRUG | Item Code (Source) | NDC:0781-7249 |
| Route of Administration | SUBLINGUAL, BUCCAL      | DEA Schedule       | CIII          |

### Active Ingredient/Active Moiety

| Ingredient Name  | Basis of Strength | Strength |
|--|-------------------|----------|
| buprenorphine hydrochloride (UNII: 56W8MW3EN1) (buprenorphine - UNII:40D3SCR4GZ) | buprenorphine     | 12 mg    |
| naloxone hydrochloride (UNII: F850569PQR) (naloxone - UNII:36B82AMQ7N)           | naloxone          | 3 mg     |

### Inactive Ingredients

| Ingredient Name                                     | Strength |
|---|----------|
| POLYETHYLENE GLYCOL, UNSPECIFIED (UNII: 3WJQ0SDW1A) |          |
| HYPROMELLOSES (UNII: 3NXW29V3WO)                    |          |
| maltitol (UNII: D65DG142WK)                         |          |
| acesulfame potassium (UNII: 23OV73Q5G9)             |          |
| citric acid monohydrate (UNII: 2968PHW8QP)          |          |
| sodium citrate (UNII: 1Q73Q2JULR)                   |          |
| FD&C yellow no. 6 (UNII: H77VEI93A8)                |          |

### Packaging

| # | Item Code        | Package Description                             | Marketing Start Date | Marketing End Date |
|---|------------------|---|----------------------|--------------------|
| 1 | NDC:0781-7249-64 | 30 in 1 CARTON                                  | 02/19/2019           | 04/30/2021         |
| 1 | NDC:0781-7249-06 | 1 in 1 POUCH; Type 0: Not a Combination Product |                      |                    |

## Marketing Information

| Marketing Category     | Application Number or Monograph Citation | Marketing Start Date | Marketing End Date |
|------------------------|--|----------------------|--------------------|
| NDA authorized generic | NDA022410                                | 02/19/2019           | 04/30/2021         |

**Labeler** - Indivior Inc. (005387188)

Revised: 4/2020

Indivior Inc.