

**RAPID REPAIR HEALING CREAM- allantoin, dimethicone cream**  
**June Jacobs Labs LLC**

-----  
**June Jacobs Rapid Repair Healing Cream**

**Active Ingredients**

Allantoin- 0.50%

Dimethicone- 1.50%

**Active Ingredient .....Purpose**

Allantoin 0.50%.....Skin protectant

Dimethicone 1.50%.....Skin protectant

**Uses**

- temporarily protects and helps relieve chapped or cracked skin.
- Helps protect from the drying effects of wind and cold weather.

**Warnings For external use only.**

**When Using this product**

- Keep out of the eyes. Rinse with water to remove.

**Stop use and ask a doctor if**

- Condition worsens
- Symptoms last more than 7 days or clear up and occur again within a few days.

**Do not use on**

- deep or puncture wounds
- animal bites
- serious burns

**Keep out of reach of children.**

if swallowed, get medical help or contact a Poison Control Center right away.

**Directions**

- Apply as needed

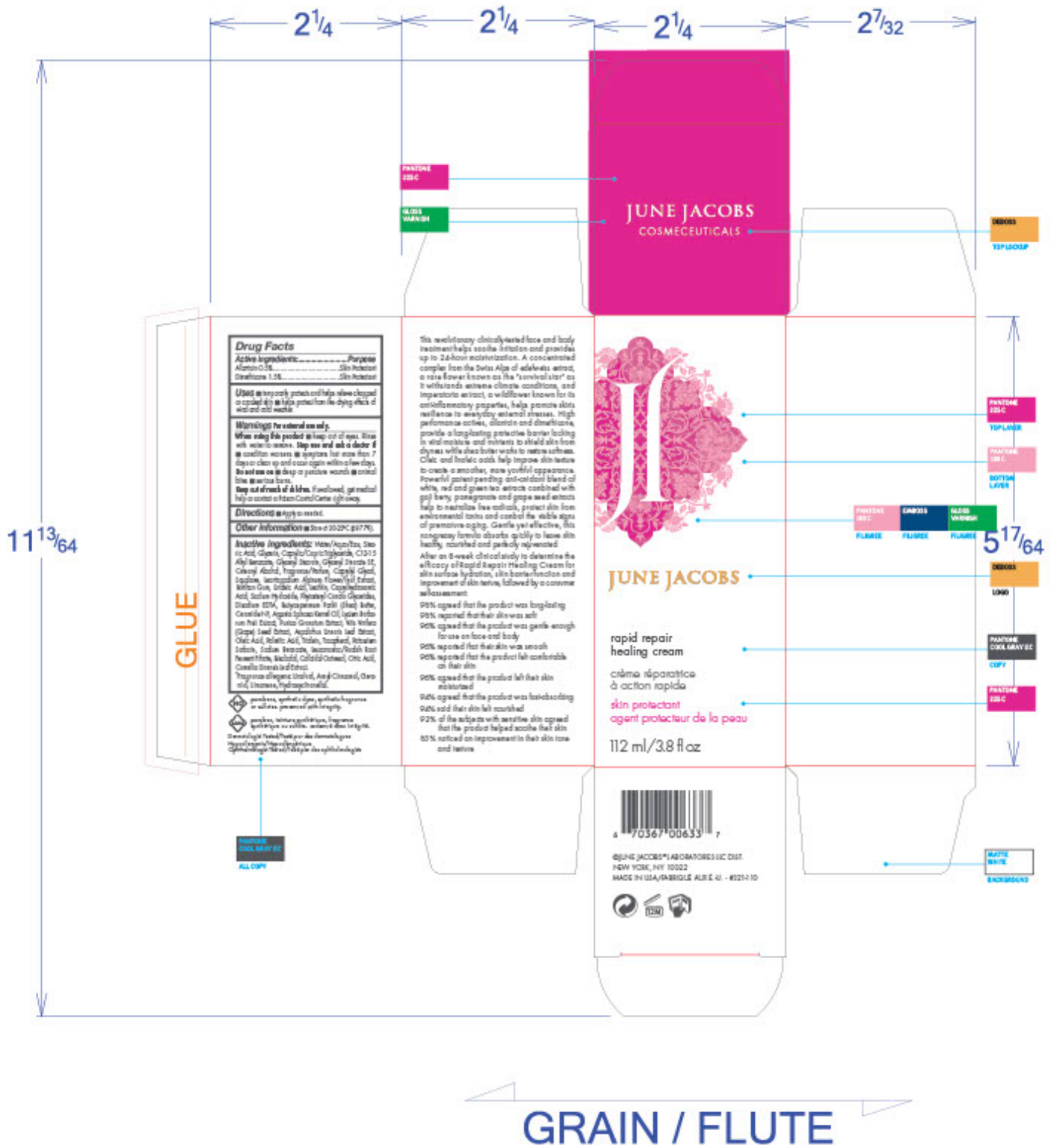
**Other information:**

- Store at 20-25C (68-77F)

**Inactive Ingredients**

Water/ Aqua, Stearic acid, Glycerin, Caprylic/Capric Triglyceride, C12-15 Alkyl Benzoate, Glyceryl Stearate, Glyceryl Stearate SE, Cetearyl Alcohol, Fragrance/Parfum , Caprylyl Glycol, Squalane, Leontopodium Alpinum Flower/leaf Extract, Xanthan Gum, Linoleic Acid, Lecithin, Caprylhydroxamic Acid, Sodium Hydroxide, Phytosteryl Canola Glycerides, Disodium EDTA, Butyrospermum Parkii (Shea) Butter, Ceramide NP, Argania Spinosa Kernel Oil, Lycium Barbarum Fruit Extract, Punica Granatum Extract, Vitis Vinifera (Grape) Seed Extract, Aspalathus Linearis Leaf Extract, Oleic Acid, Palmitic Acid, Triolein,

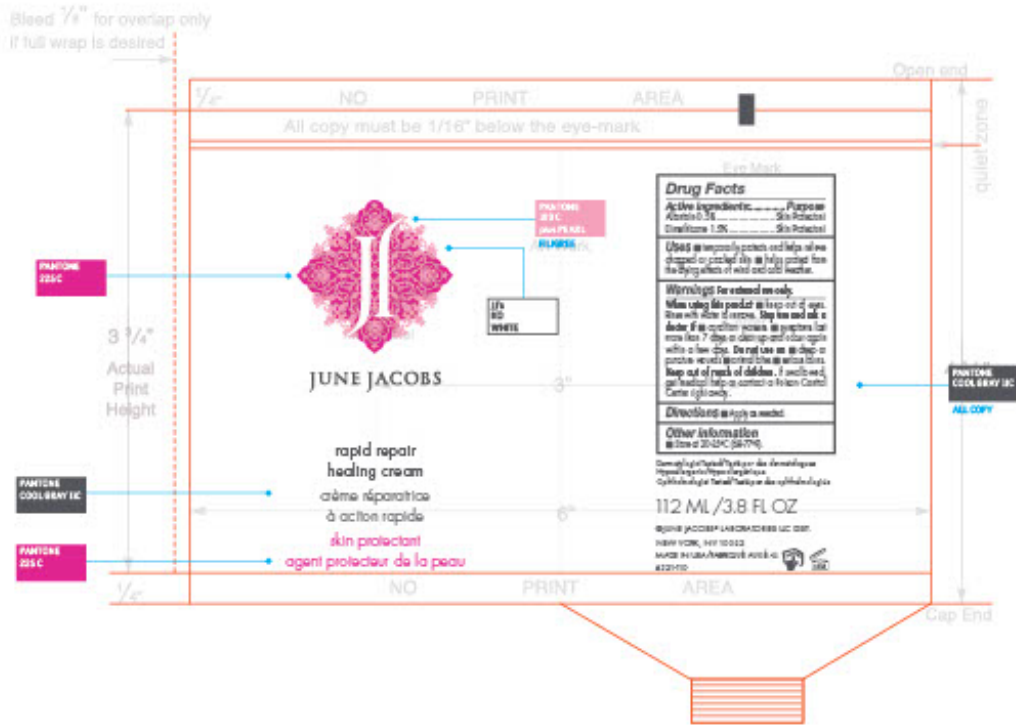
Tocopherol, Potassium Sorbate, Sodium Benzoate, Leuconostoc/Radish Root Ferment Filtrate, Bisabolol, Colloidal Oatmeal, Citric Acid, Camellia Sinensis Leaf Extract, Linalool, Amyl Cinnamal, Geraniol, Limonene , Hydroxycitronellal



rapid repair healing cream - #321-110

MECHANICAL FILE		ARTWORK SPECS		APPROVALS					
FILE NAME: JJ 321-110_HealingCream_Crtn_240516		STOCK: 24pt CIS Matte White							
PATH: Art\Art Dept\June Jacobs\Packaging\321-110 Rapid Repair Healing Cream\CARTON1		COMPONENT: Box		SP	PK	RS	GW	DH	JJ
DIELINE: 11-13/64" x 9-13/32"		COLORS BREAKDOWN: GLOSS WASH PANTONE 185 C PANTONE 225 C PANTONE COOL GRAY 8 C							
400 PARK AVE, 16 <sup>TH</sup> FL., NEW YORK, NY 10022									

DECO AREA:		COMMENTS TO PRINTER:			
UPC #: 6-70367-00633-7		OTHER:		DATE	
DATE: 07/29/15		EMBOSS			
ART RELEASE DATE:		DEBOSS			
MECHANICAL: Susan Cheng					
CONTACT : GECELYN NATAL		EMAIL : GNATAL@JUNEJACOBSLABS.COM		PHONE : 212.471.4830 x5263	



Leave a minimum 1/16" quiet zone from the bottom of eye-mark to the start of all copy.

FILE NAME: JJ 321-110_HealingCream_Tb_240516	COLORS BREAKDOWN:	STOCK:	APPROVALS:					
PATH: Art/Art Dept/June Jacobs/Packaging/321-110 Rapid Repair Healing Cream/CARTON		COMPONENT: 3.8oz White Tube, Cap MATTE PINK PMS 225  COMMENTS TO PRINTER: Art to be centered and aligned with front of cap. Eyemark to be included to center art on back. Pre-production samples required for approval.	MKTG			R&D	ART	OPR
DIELINE: Mepco 2x4 118			JB	CW	EH	MEP/BN	DH	JJ
DECO AREA: 2.0" W X 4.25" H								
UPC #: 6-70367-00633-7								
DATE: 05/18/24								
ART RELEASE DATE:								
MECHANICAL: Susan Cheng								
CONTACT : BECLYN NATAL    EMAIL : GNATAL@JUNEJACOBS.COM    PHONE : 212.471.4830 x5263								

## RAPID REPAIR HEALING CREAM

allantoin, dimethicone cream

### Product Information

<b>Product Type</b>	HUMAN OTC DRUG	<b>Item Code (Source)</b>	NDC:65278-110
<b>Route of Administration</b>	TOPICAL		

### Active Ingredient/Active Moiety

Ingredient Name	Basis of Strength	Strength
<b>ALLANTOIN</b> (UNII: 344S277G0Z) (ALLANTOIN - UNII:344S277G0Z)	ALLANTOIN	0.9907 g in 198.14 g
<b>DIMETHICONE</b> (UNII: 92RU3N3Y1O) (DIMETHICONE - UNII:92RU3N3Y1O)	DIMETHICONE	2.9721 g in 198.14 g

### Inactive Ingredients

Ingredient Name	Strength
<b>LINALYL ACETATE</b> (UNII: 5K47SSQ51G)	
<b>.ALPHA.-AMYL CINNAMALDEHYDE</b> (UNII: WC51CA3418)	
<b>TERPINEOL</b> (UNII: R53Q4ZWC99)	
<b>ORANGE OIL</b> (UNII: AKN3KSD11B)	
<b>GLYCERYL TRIOLEATE</b> (UNII: O05EC62663)	
<b>SODIUM BENZOATE</b> (UNII: OJ245FE5EU)	
<b>POTASSIUM SORBATE</b> (UNII: 1VPU26JZZ4)	
<b>WATER</b> (UNII: 059QF0KO0R)	
<b>GERANIOL</b> (UNII: L837108USY)	
<b>BENZYL ACETATE</b> (UNII: 0ECG3V79ZJ)	
<b>HYDROXYCITRONELLAL</b> (UNII: 8SQ0VA4YUR)	
<b>VITIS VINIFERA SEED</b> (UNII: C34U15ICXA)	
<b>OATMEAL</b> (UNII: 8PI54V663Y)	
<b>MEDIUM-CHAIN TRIGLYCERIDES</b> (UNII: C9H2L21V7U)	
<b>CETOSTEARYL ALCOHOL</b> (UNII: 2DMT128M1S)	
<b>GLYCERYL STEARATE SE</b> (UNII: FCZ5MH785I)	
<b>TOCOPHEROL</b> (UNII: R0ZB2556P8)	
<b>ALKYL (C12-15) BENZOATE</b> (UNII: A9EJ3J61HQ)	
<b>STEARIC ACID</b> (UNII: 4ELV7Z65AP)	
<b>LEMON OIL</b> (UNII: I9GRO824LL)	
<b>ARGAN OIL</b> (UNII: 4V59G5UW9X)	
<b>SODIUM HYDROXIDE</b> (UNII: 55X04QC32I)	

<b>EDETATE DISODIUM</b> (UNII: 7FLD91C86K)
<b>CERAMIDE NP</b> (UNII: 4370DF050B)
<b>LYCIUM BARBARUM FRUIT</b> (UNII: 930626MWDL)
<b>PUNICA GRANATUM ROOT BARK</b> (UNII: CLV24I3T1D)
<b>.ALPHA.-BISABOLOL, (+/-)-</b> (UNII: 36HQN158VC)
<b>CITRIC ACID MONOHYDRATE</b> (UNII: 2968PHW8QP)
<b>GREEN TEA LEAF</b> (UNII: W2ZU1RY8B0)
<b>GLYCERYL MONOSTEARATE</b> (UNII: 230OU9XXE4)
<b>CITRUS RETICULATA LEAF OIL</b> (UNII: 1515UE78IH)
<b>TRIETHYL CITRATE</b> (UNII: 8Z96QXD6UM)
<b>GLYCERIN</b> (UNII: PDC6A3C0OX)
<b>LINALOOL, (+/-)-</b> (UNII: D81QY6I88E)
<b>OLEIC ACID</b> (UNII: 2UMI9U37CP)
<b>LIMONENE, (+)-</b> (UNII: GFD7C86Q1W)
<b>LEONTOPODIUM ALPINUM FLOWERING TOP</b> (UNII: QQC1AK06RK)
<b>CAPRYLYL GLYCOL</b> (UNII: 00YIU5438U)
<b>SQUALANE</b> (UNII: GW89575KF9)
<b>XANTHAN GUM</b> (UNII: TTV12P4NEE)
<b>LINOLEIC ACID</b> (UNII: 9KJL21T0QJ)
<b>LECITHIN, SOYBEAN</b> (UNII: 1DI56QDM62)
<b>CAPRYLHYDROXAMIC ACID</b> (UNII: UPY805K99W)
<b>PHYTOSTERYL MACADAMIATE</b> (UNII: 233VSF903M)
<b>SHEA BUTTER</b> (UNII: K49155WL9Y)
<b>LEUCONOSTOC/RADISH ROOT FERMENT FILTRATE</b> (UNII: D2QHA03458)
<b>COPAIFERA OFFICINALIS RESIN</b> (UNII: 1VH544O5AT)
<b>ASPALATHUS LINEARIS LEAF</b> (UNII: H7UGK1GJCU)
<b>PALMITIC ACID</b> (UNII: 2V16EO95H1)
<b>PHENYLETHYL ALCOHOL</b> (UNII: ML9LGA7468)
<b>METHYL ANTHRANILATE</b> (UNII: 981I0C1E5W)
<b>GERANYL ACETATE</b> (UNII: 3W81YG7P9R)

### Product Characteristics

<b>Color</b>	white (White/offwhite)	<b>Score</b>	
<b>Shape</b>		<b>Size</b>	
<b>Flavor</b>		<b>Imprint Code</b>	
<b>Contains</b>			

### Packaging

#	Item Code	Package Description	Marketing Start Date	Marketing End Date
1	NDC:65278-110-01	198.14 g in 1 TUBE; Type 0: Not a Combination Product	11/09/2011	
2	NDC:65278-110-02	198.14 g in 1 CARTON; Type 0: Not a Combination Product	11/09/2011	
3	NDC:65278-110-03	112.38 g in 1 TUBE; Type 0: Not a Combination Product	11/09/2011	
4	NDC:65278-110-04	112.38 g in 1 CARTON; Type 0: Not a Combination Product	11/09/2011	
5	NDC:65278-	47.32 g in 1 TUBE; Type 0: Not a Combination Product	11/09/2011	

5	110-05	Product	11/09/2011	
6	NDC:65278-110-06	47.32 g in 1 CARTON; Type 0: Not a Combination Product	11/09/2011	
<b>Marketing Information</b>				
	<b>Marketing Category</b>	<b>Application Number or Monograph Citation</b>	<b>Marketing Start Date</b>	<b>Marketing End Date</b>
	OTC Monograph Drug	M016	11/09/2011	

**Labeler - June Jacobs Labs LLC (082439410)**

<b>Establishment</b>				
	<b>Name</b>	<b>Address</b>	<b>ID/FEI</b>	<b>Business Operations</b>
	June Jacobs Labs, LLC		122610681	manufacture(65278-110)

Revised: 5/2024

June Jacobs Labs LLC