

**AGNUS CASTUS- agnus castus liquid**  
**Rxhomeo Private Limited d.b.a. Rxhomeo, Inc**

*Disclaimer: This homeopathic product has not been evaluated by the Food and Drug Administration for safety or efficacy. FDA is not aware of scientific evidence to support homeopathy as effective.*

-----

**ACTIVE INGREDIENT**

AGNUS CASTUS HPUS 1X and higher

**USES**

USES: Temporary Relief - Itchy Eyes And Aversion To Light\*

\* Claims based on traditional homeopathic practice, not accepted medical evidence. Not FDA evaluated.

**INDICATIONS**

Condition listed above or as directed by the physician

**DOSAGE**

Adults: Mix 4-6 drops in 1/2 cup of water, take orally three times daily or as directed by a physician. Children (2 years and older): Take half the adult dose.

**WARNINGS**

This product is to be used for self-limiting conditions

If symptoms do not improve in 4 days, or worsen, discontinue use and seek assistance of health professional

As with any drug, if you are pregnant, or nursing a baby, seek professional advice before taking this product

Keep this and all medication out of reach of children

Do not use if capseal is broken or missing.

Close the cap tightly after use.

**INACTIVE INGREDIENTS**

Active: As Above; Inactive: ENA 50% v/v and Purified Water q.s.

**STORAGE**

Store in a cool dark place

## QUESTIONS OR COMMENTS

www.Rxhomeo.com | 1.888.2796642 | info@rxhomeo.com - Rxhomeo, Inc 2940  
Eisenhower St., Suite 100, Carrollton, TX 75007 USA



rxhomeo.com

# AGNUS CASTUS 1X



Ingredients: Active: As Above; Inactive: ENA 50% v/v and Purified Water q.s.  
Dosage: Adults: Mix 4-6 drops in 1/2 cup of water, take orally three times daily  
or as directed by a physician. Children (2 years and older): Take half the adult dose.  
USES: Temporary Relief - Itchy Eyes And Aversion To Light\*

\* Claims based on traditional homeopathic practice, not accepted medical evidence. Not FDA evaluated.

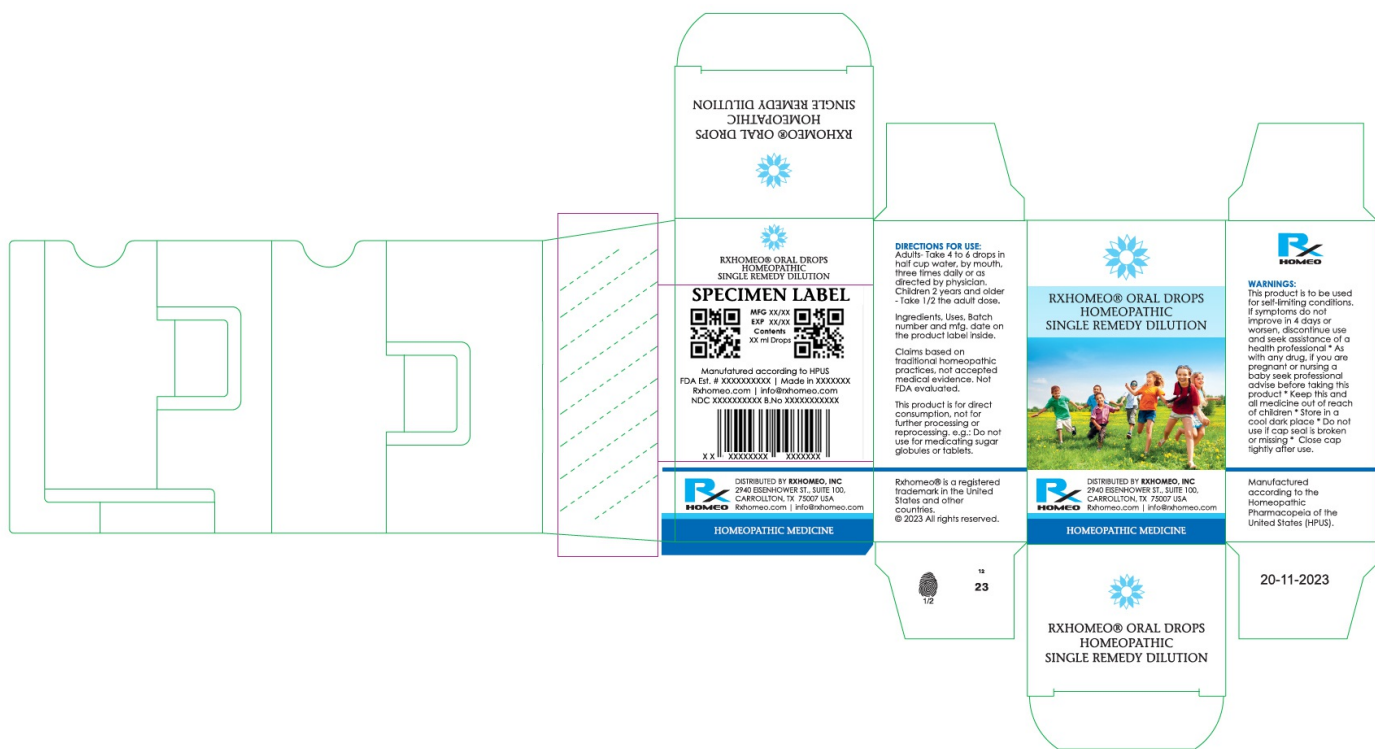
NDC 15631-2562 B. No. XXXXXXX MFG XX/XX EXP XX/XX Contents XX ml Drops

HOMOEOPATHIC MEDICINE



Distributed by Rxhomeo, Inc 2940 Eisenhower St., Suite 100, Carrollton, TX 75007 USA

FDA Est. # XXXXXXXXXXX | Made in XXXXXXX | Rxhomeo.com | info@rxhomeo.com



Cyan Magenta Yellow Black NVZ

Job Size: 166,999 x 310,299

RXHomeo\_V4

## AGNUS CASTUS

agnus castus liquid

### Product Information

<b>Product Type</b>	HUMAN OTC DRUG	<b>Item Code (Source)</b>	NDC:15631-2562
<b>Route of Administration</b>	ORAL		

**Active Ingredient/Active Moiety**

Ingredient Name	Basis of Strength	Strength
<b>CHASTE TREE</b> (UNII: 433OSF3U8A) (CHASTE TREE - UNII:433OSF3U8A)	CHASTE TREE	1 [hp_X] in 1 mL

**Inactive Ingredients**

Ingredient Name	Strength
<b>ALCOHOL</b> (UNII: 3K9958V90M)	
<b>WATER</b> (UNII: 059QF0K00R)	

**Packaging**

#	Item Code	Package Description	Marketing Start Date	Marketing End Date
1	NDC:15631-2562-0	10 mL in 1 BOTTLE; Type 0: Not a Combination Product	05/23/2024	
2	NDC:15631-2562-1	30 mL in 1 BOTTLE; Type 0: Not a Combination Product	05/23/2024	

**Marketing Information**

Marketing Category	Application Number or Monograph Citation	Marketing Start Date	Marketing End Date
unapproved homeopathic		05/23/2024	

**Labeler** - Rxhomeo Private Limited d.b.a. Rxhomeo, Inc (650833994)**Establishment**

Name	Address	ID/FEI	Business Operations
Rxhomeo Private Limited d.b.a. Rxhomeo, Inc		650833994	manufacture(15631-2562) , label(15631-2562)

Revised: 5/2024

Rxhomeo Private Limited d.b.a. Rxhomeo, Inc