

**SOOTHE AND SLEEP- aesculus hippocastanum, flos, chamomilla, ferr phos, helianthemum nummularium, flos, mimulus guttatus, flos, nat mur, nat phos, nat sulph, phosphorus, verbena officinalis, flos spray  
Siddha Flower Essences LLC**

*Disclaimer: This homeopathic product has not been evaluated by the Food and Drug Administration for safety or efficacy. FDA is not aware of scientific evidence to support homeopathy as effective.*

-----

**Drug Facts**

**Active Ingredient**

---

Each dose contains equal parts of:

Aesculus hippocastanum, flos (White Chestnut) 5X HPUS

Chamomilla 6C HPUS

Ferr Phos 12X HPUS

Helianthemum nummularium, flos (Rock Rose) 5X HPUS

Mimulus guttatus, flos (Mimulus) 5X HPUS

Nat Mur 6X HPUS

Nat Phos 6X HPUS

Nat Sulph 6X HPUS

Phosphorus 6C HPUS

Verbena officinalis, flos (Vervain) 5X HPUS

---

**Purpose**

Each dose contains equal parts of:

Aesculus hippocastanum, flos (White Chestnut) 5X HPUS.....can't sleep enough because thoughts going around in head

Chamomilla 6C HPUS.....restlessness, irritability; cries self to sleep

Ferr Phos 12X HPUS.....restless, sleepless

Helianthemum nummularium, flos (Rock Rose) 5X HPUS.....nerves are weak; overreact and feel helpless

Mimulus guttatus, flos (Mimulus) 5X HPUS.....anxieties cause inner tension

Nat Mur 6X HPUS.....difficulty falling asleep; nightmares

Nat Phos 6X HPUS.....sleepless after excitement; sleepless from 12-3 am

Nat Sulph 6X HPUS.....uneasy sleep with anxious dream; tired in the morning

Phosphorus 6C HPUS.....frequent waking; trouble going back to sleep; falls asleep late

Verbena officinalis, flos (Vervain) 5X HPUS.....children are hyperactive and won't go to bed at night

The letters HPUS indicate ingredients are in the Homeopathic Pharmacopoeia of the United States.

## Uses

- temporarily relieves symptoms of
- difficulty falling asleep
- restlessness
- sleepless after excitement
- waking and trouble going back to sleep
- nightmares

---

indications are based on homeopathic materia medica, not clinical tests.

---

## Warnings

**Stop use and ask a doctor** if symptoms persist or worsen

**If pregnant or breast-feeding** ask a health professional before use

**Keep out of reach of children**

## Directions

- Children 6 years and older 4 sprays in mouth at bedtime
- for maximum effect 4 sprays in mouth one hour before bed and again at bedtime

- can also be used after waking up in the middle of the night
- use 5 days per week until symptoms are relieved

---

|                                   |                             |
|-----------------------------------|-----------------------------|
| children 2 years to under 6 years | 2 sprays in mouth as needed |
|-----------------------------------|-----------------------------|

---

|                        |                  |
|------------------------|------------------|
| children under 2 years | consult a doctor |
|------------------------|------------------|

---

- may also be applied externally to the top of the child's head

### **Other Information**

- do not use if plastic seal around cap is broken or missing.
- store in a cool, dry place.

### **Inactive Ingredients**

Chamomile\*, Chaparral\*, Lemon Balm\*, Licorice\*, Mock Orange\*, Natural Flavor, Purified Water, Valerian\*

---

\*flower essence

---

*Questions or Comments?*

**Call 800.570.0021**

**Between 9am-5pm PST**

**info@siddhaflowers.com**

**siddhaflowers.com**

MFD by Siddha Flower Essences  
Oxnard, CA 93030

**Made in USA**

### **Side Panel**

flower essences and homeopathy:

- Jump start your child's natural ability to heal
- Natural, safe and non-habit forming

- No contraindications. May be effectively used with drugs and other supplements
- Alcohol, sugar, dairy and gluten free
- Prepared in purified water with natural preservatives
- Blends time-tested natural medicine with modern technology
- 5 week supply

## **siddha kids**

---

stress relief  
attention and focus  
soothe and sleep  
temper tamer

---

### **Principal Display Panel**

**100% natural - no alcohol**

**siddha** cell salts + flower essences

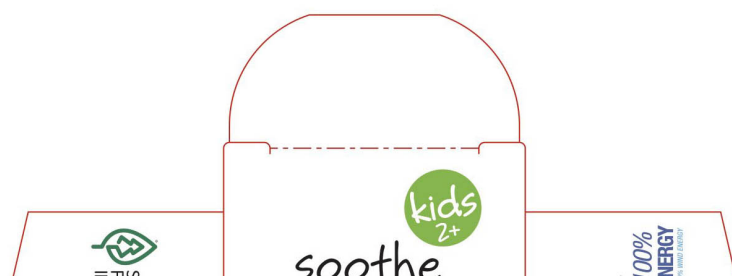
**kids 2+**

soothe and sleep

Difficulty Falling Asleep  
Restless and Sleepless  
Anxious Dreams

**sugar, dairy and gluten free**

**Homeopathic Remedy**  
**1 US fl oz (29.6mL)**



U.S. SUSTAINABLE  
ORCHESTRY  
INITIATIVE



# & sleep

homeopathic oral spray

non GMO • no alcohol

NDC: 69779-018-01



kids  
2+

# soothe & sleep

Difficulty Falling Asleep  
Restless & Sleepless  
Anxious Dreams



sugar, dairy & gluten free  
Homeopathic Remedy  
1 US fl oz (29.6mL)

## flower essences & homeopathy:

- Jump start your child's natural ability to heal
- Natural, safe and non-habit forming
- No contraindications. May be effectively used with drugs and other supplements
- Alcohol, sugar, dairy & gluten free
- Prepared in purified water with natural preservatives
- Blends time-tested natural medicine with modern technology
- 5 week supply

## siddha kids

stress relief  
attention & focus  
soothe & sleep  
temper tamer

### Drug Facts

**Active Ingredient Purpose**  
Each dose contains equal parts of:  
Aesculus hippocastanum, flos 5X HPUS .... can't sleep because thoughts going around in head  
Chamomilla 6C HPUS ..... restlessness, irritability; cries self to sleep  
Ferr Phos 12X HPUS ..... restless, sleepless  
Helianthemum nummularium, flos 5X HPUS ..... nerves are weak; overreact and feel helpless  
Mimulus guttatus, flos 5X HPUS ..... anxieties cause inner tension  
Nat Mur 6X HPUS ..... difficulty falling asleep; nightmares  
Nat Phos 6X HPUS ..... sleepless after excitement; sleepless from 12-3 am.  
Nat Sulph 6X HPUS ..... uneasy sleep with anxious dreams; tired in morning  
Phosphorus 6C HPUS ..... frequent waking; trouble going back to sleep; falls asleep late  
Verbena officinalis, flos 5X HPUS ..... children are hyperactive and won't go to bed at night

The letters HPUS indicate ingredients are in the Homeopathic Pharmacopoeia of the United States.

**Uses** • temporarily relieves symptoms of  
• difficulty falling asleep  
• restlessness  
• sleepless after excitement  
• waking and trouble going back to sleep  
• nightmares  
indications are based on homeopathic materia medica, not clinical tests.

**Warnings**  
Stop use and ask a doctor if symptoms persist or worsen  
If pregnant or breast-feeding ask a health professional before use  
Keep out of reach of children →

### Drug Facts (continued)

**Directions**  
• children 6 years and older  
4 sprays in mouth at bedtime  
• for maximum effect  
4 sprays in mouth one hour before bed and again at bedtime  
• can also be used after waking up in the middle of the night  
• use 5 days per week until symptoms are relieved  
children 2 years | 2 sprays in mouth to under 6 years | only as needed  
children under 2 years | consult a doctor

**Other Information**  
• do not use if plastic seal around cap is broken or missing.  
• store in a cool, dry place.

**Inactive Ingredients**  
Chamomile\*, Chaparral\*, Lemon Balm\*, Licorice\*, Mock Orange\*, Natural Flavor, Purified Water, Valerian\*

\* flower essence

### Questions or Comments?

Call 800.570.0021  
Between 9am-5pm PST  
info@siddhaflowers.com  
siddhaflowers.com  
MFD by Siddha Flower Essences  
Oxnard, CA 93030  
Made in USA



8 97186 00224 5

Lot No.

With Love & Gratitude



Peel Here non GMO • alcohol, sugar, dairy & gluten free

NDC: 69779-018-02  
siddha cell salts + flower essences  
kids 2+  
soothe & sleep  
Difficulty Falling Asleep  
Restless & Sleepless • Anxious Dreams  
Homeopathic Remedy  
0.25 US fl oz (7.5mL)  
ONE WEEK SUPPLY



8 97186 00230 6

**Drug Facts**  
**Active Ingredient Purpose**  
Each dose contains equal parts of:  
Chamomilla 6C HPUS ..... restlessness, irritability; cries self to sleep  
Ferr Phos 12X HPUS ..... restless, sleepless

Mimulus, flos 5X HPUS\* .....anxieties cause inner tension  
 Nat Mur 6X HPUS\* ....difficulty falling asleep; nightmares  
 Nat Phos 6X HPUS\* .....sleepless after excitement;  
 sleepless from 12-3 am.  
 Nat Sulph 6X HPUS\* .....uneasy sleep with anxious  
 dreams; tired in morning  
 Phosphorus 6C HPUS\* .....frequent waking; trouble  
 going back to sleep; falls asleep late  
 Rock Rose, flos 5X HPUS\* .....nerves are weak;  
 overreact and feel helpless  
 Vervain, flos 5X HPUS\* .....children are hyperactive  
 and won't go to bed at night  
 White Chestnut, flos 5X HPUS\* .....can't sleep because  
 thoughts going around in head  
 \*The letters HPUS indicate ingredients are in the  
 Homeopathic Pharmacopoeia of the United States

**Uses** temporarily relieves symptoms of  
 • difficulty falling asleep • restlessness • sleepless after  
 excitement • waking and trouble going back to sleep  
 • nightmares  
 indications are based on homeopathic materia medica,  
 not clinical tests.

**Warnings**

Stop use and ask a doctor if symptoms persist or  
 worsen

Keep out of reach of children →

DO NOT  
 use if seal is  
 broken.

## SOOTHE AND SLEEP

aesculus hippocastanum, flos, chamomilla, ferr phos, helianthemum nummularium, flos, mimulus guttatus, flos, nat mur, nat phos, nat sulph, phosphorus, verbena officinalis, flos spray

### Product Information

|                                |                |                           |               |
|--------------------------------|----------------|---------------------------|---------------|
| <b>Product Type</b>            | HUMAN OTC DRUG | <b>Item Code (Source)</b> | NDC:69779-018 |
| <b>Route of Administration</b> | ORAL, TOPICAL  |                           |               |

### Active Ingredient/Active Moiety

| Ingredient Name   | Basis of Strength                       | Strength             |
|---|---|----------------------|
| <b>AESCULUS HIPPOCASTANUM FLOWER</b> (UNII: KK0Z92II8M) (AESCULUS HIPPOCASTANUM FLOWER - UNII:KK0Z92II8M)     | AESCULUS HIPPOCASTANUM FLOWER           | 5 [hp_X] in 29.6 mL  |
| <b>MATRICARIA RECUTITA</b> (UNII: G0R4UBI2ZZ) (MATRICARIA RECUTITA - UNII:G0R4UBI2ZZ)                         | MATRICARIA RECUTITA                     | 6 [hp_C] in 29.6 mL  |
| <b>FERROSO FERRIC PHOSPHATE</b> (UNII: 91GQH8I5F7) (FERROSO FERRIC PHOSPHATE - UNII:91GQH8I5F7)               | FERROSO FERRIC PHOSPHATE                | 12 [hp_X] in 29.6 mL |
| <b>HELIANTHEMUM NUMMULARIUM FLOWER</b> (UNII: 51BRR32WPP) (HELIANTHEMUM NUMMULARIUM FLOWER - UNII:51BRR32WPP) | HELIANTHEMUM NUMMULARIUM FLOWER         | 5 [hp_X] in 29.6 mL  |
| <b>MIMULUS GUTTATUS FLOWERING TOP</b> (UNII: 192426I5JU) (MIMULUS GUTTATUS FLOWERING TOP - UNII:192426I5JU)   | MIMULUS GUTTATUS FLOWERING TOP          | 5 [hp_X] in 29.6 mL  |
| <b>SODIUM CHLORIDE</b> (UNII: 451W47IQ8X) (SODIUM CATION - UNII:LYR4M0NH37)                                   | SODIUM CHLORIDE                         | 6 [hp_X] in 29.6 mL  |
| <b>SODIUM PHOSPHATE, DIBASIC, HEPTAHYDRATE</b> (UNII: 70WT22SF4B) (SODIUM CATION - UNII:LYR4M0NH37)           | SODIUM PHOSPHATE, DIBASIC, HEPTAHYDRATE | 6 [hp_X] in 29.6 mL  |
| <b>SODIUM SULFATE</b> (UNII: 0YPR65R21J) (SODIUM SULFATE ANHYDROUS - UNII:36KCS0R750)                         | SODIUM SULFATE                          | 6 [hp_X] in 29.6 mL  |

|   |                                   |                        |
|---|-----------------------------------|------------------------|
| <b>PHOSPHORUS</b> (UNII: 27YLU75U4W) (PHOSPHORUS - UNII:27YLU75U4W)   | PHOSPHORUS                        | 6 [hp_C]<br>in 29.6 mL |
| <b>VERBENA OFFICINALIS FLOWERING TOP</b> (UNII: 311PNK9CDZ) (VERBENA OFFICINALIS FLOWERING TOP - UNII:311PNK9CDZ) | VERBENA OFFICINALIS FLOWERING TOP | 5 [hp_X]<br>in 29.6 mL |

### Inactive Ingredients

| Ingredient Name   | Strength |
|---|----------|
| <b>MATRICARIA RECUTITA FLOWERING TOP</b> (UNII: 3VNC7T6Z02) |          |
| <b>MELISSA OFFICINALIS FLOWERING TOP</b> (UNII: 5JQG17B06J) |          |
| <b>LICORICE</b> (UNII: 61ZBX54883)                          |          |
| <b>WATER</b> (UNII: 059QF0KO0R)                             |          |
| <b>VALERIAN</b> (UNII: JWF5YAW3QW)                          |          |

### Packaging

| # | Item Code        | Package Description                                    | Marketing Start Date | Marketing End Date |
|---|------------------|--|----------------------|--------------------|
| 1 | NDC:69779-018-01 | 1 in 1 CARTON  | 03/01/2017           |                    |
| 1 |                  | 29.6 mL in 1 BOTTLE; Type 0: Not a Combination Product |                      |                    |
| 2 | NDC:69779-018-02 | 1 in 1 CARTON  | 04/03/2017           |                    |
| 2 |                  | 7.5 mL in 1 BOTTLE; Type 0: Not a Combination Product  |                      |                    |

### Marketing Information

| Marketing Category     | Application Number or Monograph Citation | Marketing Start Date | Marketing End Date |
|------------------------|--|----------------------|--------------------|
| unapproved homeopathic |  | 03/01/2017           |                    |

**Labeler** - Siddha Flower Essences LLC (053674034)

**Registrant** - Siddha Flower Essences LLC (053674034)

### Establishment

| Name                       | Address | ID/FEI    | Business Operations    |
|----------------------------|---------|-----------|------------------------|
| Siddha Flower Essences LLC |         | 053674034 | manufacture(69779-018) |