

**IBUPROFEN 200 MG- ibuprofen capsule, liquid filled**  
**R J General Corporation**

-----  
**Advil Liqui-Gels**

**Solubilized Ibuprofen Capsules, 200mg**  
**Pain Reliever/Fever Reducer(NSAID)**

**Drug facts**

<b>Active ingredients (in each tablet)</b>	<b>Purpose</b>
Solubilized Ibuprofen equal to 200 mg Ibuprofen (NSAID) * (present as the free acid and potassium salt)	Pain reliever/Fever reducer

\* nonsteroidal anti-inflammatory drug

**Uses**

- temporarily relieves minor aches and pains due to:
  - headache
  - toothache
  - backache
  - menstrual cramps
  - the common cold
  - muscular aches
  - minor pain of arthritis
- temporarily reduces fever

**Warnings**

**Allergy alert:**Ibuprofen may cause a severe allergic reaction, especially in people allergic to aspirin. Symptoms may include:

- hives
- facial swelling
- asthma (wheezing)
- shock
- skin reddening
- rash
- blisters

If an allergic reaction occurs, stop use and seek medical help right away.

**Stomach bleeding warning:**This product contains an NSAID, which may cause severe

stomach bleeding. The chance is higher if you

- are age 60 or older
- have had stomach ulcers or bleeding problems
- take a blood thinning (anticoagulant) or steroid drug
- take other drugs containing prescription or nonprescription NSAIDs [aspirin, ibuprofen, naproxen, or others]
- have 3 or more alcoholic drinks every day while using this product
- take more or for a longer time than directed

**Heart attack and stroke warning:** NSAIDs, except aspirin, increase the risk of heart failure, and stroke. These can be fatal. The risk is higher if you use more than directed or for longer than directed.

**Do not use**

- if you have ever had an allergic reaction to any other pain reliever/fever reducer
- right before or after heart surgery

**Ask a doctor before use if**

- stomach bleeding warning applies to you
- you have problems or serious side effects from taking pain relievers or fever reducers
- you have a history of stomach problems, such as heartburn
- you have high blood pressure, heart disease, liver cirrhosis, kidney disease, asthma, or had a stroke
- you are taking a diuretic

**Ask a doctor or pharmacist before use if you are**

- under a doctor's care for any serious condition
- taking aspirin for heart attack or stroke, because ibuprofen may decrease this benefit of aspirin
- taking any other drug

**When using this product**

- take with food or milk if stomach upset occurs

**Stop use and ask a doctor if**

- you experience any of the following signs of stomach bleeding:
  - feel faint
  - vomit blood
  - have bloody or black stools
  - have stomach pain that does not get better
- you have symptoms of heart problem or stroke:
  - chest pain
  - trouble breathing
  - weakness in one part or side of body
  - slurred speech
  - leg swelling

- pain gets worse or lasts more than 10 days
- fever gets worse or lasts more than 3 days
- redness or swelling is present in the painful area
- any new symptoms appear

**If pregnant or breast-feeding**, ask a health professional before use. It is especially important not to use ibuprofen at 20 weeks or later in pregnancy unless definitely directed to do so by a doctor because it may cause problems in the unborn child or complications during delivery.

**Keep out of reach of children.** In case of overdose, get medical help or contact a Poison Control Center right away.

### ***Directions***

- **do not take more than directed**
- **the smallest effective dose should be used**
- adults and children 12 years and over: take 1 capsule every 4 to 6 hours while symptoms persist
- if pain or fever does not respond to 1 capsule, 2 capsules may be used
- do not exceed 6 capsules in 24 hours, unless directed by a doctor
- children under 12 years: ask a doctor

### ***Other information***

- each capsule contains: **potassium 20 mg**
- read all warnings and directions before use. Keep Carton.
- store at 20-25°C (68-77°F)
- avoid excessive heat above 40°C (104°F)

### ***Inactive ingredients***

FD&C green no. 3, gelatin, lecithin (soybean), medium-chain triglycerides, pharmaceutical ink, polyethylene glycol, potassium hydroxide, purified water, sorbitol sorbitan solution

### ***Questions or Comments?***

Call toll free **1-800-88-ADVIL**

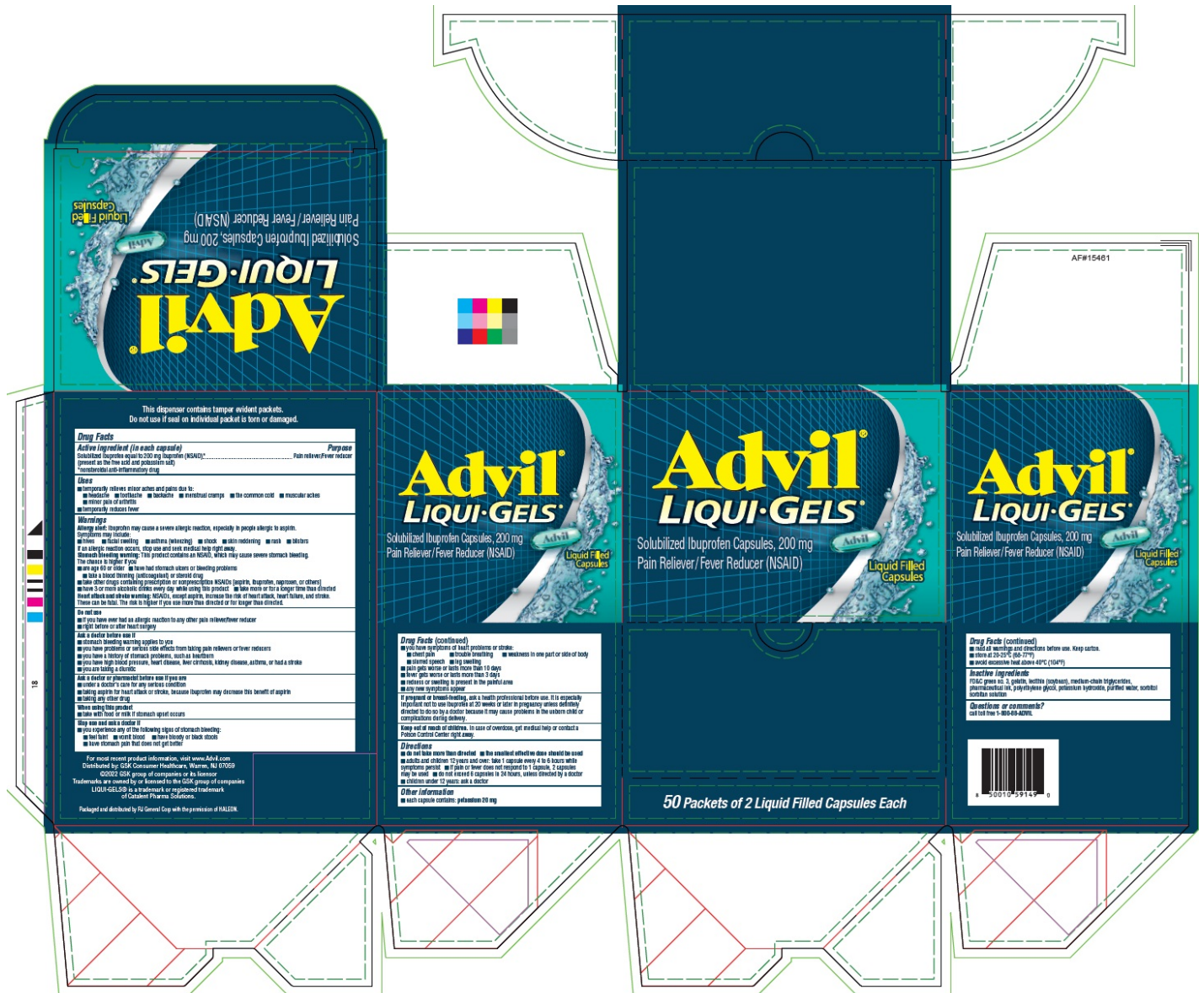
### **Distributed by:**

GSK CH, Warren,  
NJ 07059

**Packaged and distributed by RJ Corp with the permission of HALEON.**

**PRINCIPAL DISPLAY PANEL**

# Solubilized Ibuprofen Capsules 200 mg - NDC 70264-043-01 - Carton Label



## IBUPROFEN 200 MG

ibuprofen capsule, liquid filled

### Product Information

<b>Product Type</b>	HUMAN OTC DRUG	<b>Item Code (Source)</b>	NDC: 70264-043(NDC:0573-0149)
<b>Route of Administration</b>	ORAL		

### Active Ingredient/Active Moiety

Ingredient Name	Basis of Strength	Strength
<b>IBUPROFEN</b> (UNII: WK2XY110QM) (IBUPROFEN - UNII:WK2XY110QM)	IBUPROFEN	200 mg

### Inactive Ingredients

Ingredient Name	Strength

<b>FD&amp;C GREEN NO. 3</b> (UNII: 3P3ONR6O1S)	
<b>GELATIN</b> (UNII: 2G86QN327L)	
<b>LECITHIN, SOYBEAN</b> (UNII: 1DI56QDM62)	
<b>MEDIUM-CHAIN TRIGLYCERIDES</b> (UNII: C9H2L21V7U)	
<b>ALCOHOL</b> (UNII: 3K9958V90M)	
<b>POLYETHYLENE GLYCOL, UNSPECIFIED</b> (UNII: 3WJQ0SDW1A)	
<b>POTASSIUM HYDROXIDE</b> (UNII: WZH3C48M4T)	
<b>WATER</b> (UNII: 059QF0KO0R)	
<b>SORBITOL SOLUTION</b> (UNII: 8KW3E207O2)	

### Product Characteristics

<b>Color</b>	green (Transparent green to blue green)	<b>Score</b>	no score
<b>Shape</b>	CAPSULE (oblong softgel)	<b>Size</b>	20mm
<b>Flavor</b>		<b>Imprint Code</b>	Advil
<b>Contains</b>			

### Packaging

#	Item Code	Package Description	Marketing Start Date	Marketing End Date
1	NDC:70264-043-01	50 in 1 CARTON	11/04/2024	
1		2 in 1 POUCH; Type 0: Not a Combination Product		

### Marketing Information

Marketing Category	Application Number or Monograph Citation	Marketing Start Date	Marketing End Date
OTC Monograph Drug	M013	11/04/2024	

**Labeler** - R J General Corporation (122542830)

### Establishment

Name	Address	ID/FEI	Business Operations
R J General Corporation		122542830	repack(70264-043)

Revised: 11/2024

R J General Corporation