

QUALITY CHOICE LAXATIVE- sodium phosphate, dibasic, unspecified form and sodium phosphate, monobasic, unspecified form enema
Chain Drug Marketing Association

Quality Choice® Enema Laxative

Drug Facts

Active ingredients (in each 118mL delivered dose)	Purpose
Dibasic Sodium Phosphate 7 g	Saline laxative
Monobasic Sodium Phosphate 19 g	Saline laxative

Use

- relieves occasional constipation
- this product generally produces bowel movement in 1 to 5 minutes

Warnings

Dosage warning

Using more than one enema in 24 hours can be harmful.

For rectal use only.

Do not use

- on children under 2 years of age

Ask a doctor before use if you

- have already used a laxative for more than 3 days
- have kidney disease, have heart problems, or are dehydrated
- are 55 years of age or older
- are on a sodium-restricted diet
- have abdominal pain, nausea, or vomiting
- have a sudden change in bowel habits lasting more than 2 weeks

Ask a doctor or pharmacist before use if you are taking any other drug. Take this product two or more hours before or after other drugs. Laxatives may affect how other drugs work.

When using this product

- **do not use more than directed. Serious side effects may occur from excess dosage**
- do not use for more than 3 days, without asking a doctor

Stop use and ask a doctor if

- you have rectal bleeding
- you have no bowel movement within 30 minutes of enema use
- you have symptoms of dehydration (thirstiness, dizziness, vomiting, urinating less often than normal)

These symptoms may indicate a serious condition.

If pregnant or breast-feeding, ask a health professional before use.

Keep out of reach of children. If swallowed, get medical help or contact a Poison Control Center right away: 800-222-1222.

Directions (or as directed by a doctor)**Single daily dosage (per 24 hours)**

Do not use if taking another sodium phosphate product.

Do not use more unless directed by a doctor. See Warnings.

Adults and children 12 years of age and older	1 bottle once daily
Children 2 to under 12 years of age	Use Pediatric Enema
Children under 2 years of age	DO NOT USE

Other information

- **each 118 ml contains** sodium 4.3 g
- store at 15 to 30°C (59 to 86°F)
- additional liquids by mouth are recommended while using this product
- **Tamper Evident:** DO NOT USE IF TOP OR BOTTOM FLAP OF CARTON IS TORN OR MISSING.

Inactive ingredients

benzalkonium chloride, disodium EDTA, purified water

Questions or comments?

1-866-323-0107

Distributed by CDMA, Inc.
Novi, MI 48375

PRINCIPAL DISPLAY PANEL - 133 mL Bottle Carton - 1 Bottle

NDC# 83324-292-45

QC®
QUALITY
CHOICE

* Compare to the
Active Ingredients
in FLEET® Enema

Enema

Laxative

Complete, Ready-to-Use

SODIUM PHOSPHATES
RECTAL SOLUTION

Not Made
with Natural
Rubber Latex

Comfortable,
Lubricated Tip

Works In
Minutes

1
Bottle
4.5 Fl Oz (133 mL)

PL2101B
V17

CAUTION:
REMOVE
PROTECTIVE
SHIELD
BEFORE
INSERTING

Tamper Resistant
Do not use if top or bottom flap
is torn or missing.

Laxative

Enema



**CARTON SEALED
FOR SAFETY.
DO NOT USE
IF TOP OR
BOTTOM FLAP
IS TORN OR
MISSING.**

Positions for using this enema

Left-side position: Lie on left side with knees bent and arms resting comfortably.



Knee-chest position: Kneel, then lower head and chest forward until left side of face is resting on surface with left arm folded comfortably.



How to use this enema

■ REMOVE PROTECTIVE SHIELD BEFORE INSERTING.

Hold bottle upright, grasping bottle cap with fingers. Grasp protective shield with other hand and pull gently to remove.



■ ADMINISTERING ENEMA:

- With steady pressure, gently insert enema tip into rectum with a slight side-to-side movement, with tip pointing toward navel. Insertion may be easier if person receiving enema bears down, as if having a bowel movement. Doing so helps relax muscles around anus.
- Do not force enema tip into rectum. Stop using if tip is hard to insert. Forcing the tip into the rectum can cause injury (especially if you have hemorrhoids). If enema tip causes rectal bleeding or pain, get immediate medical care.
- Squeeze bottle until nearly all liquid is gone. It is not necessary to empty bottle completely, as it contains more liquid than needed.
- Remove tip from rectum and stay in position until urge to evacuate is strong (usually 1 to 5 minutes). If no urge is felt after 5 minutes of using, try to empty bowel. Call a doctor promptly if no liquid comes out of the rectum after 30 minutes because dehydration could occur.

Bottle, cap and shield are Not Made with Natural Rubber Latex

Allergic reaction to materials containing Latex is a growing and serious medical problem.

NDC# 83324-292-45



* Compare to the Active Ingredients in FLEET® Enema



Distributed by CDMA, Inc.
Novi, MI 48375
www.qualitychoice.com
Questions: 800-935-2362



Enema

Laxative

Complete, Ready-to-Use

SODIUM PHOSPHATES
RECTAL SOLUTION

Not Made
with Natural
Rubber Latex

Comfortable,
Lubricated Tip

Works In
Minutes



Drug Facts

Active ingredients (in each 118mL delivered dose)	Purpose
Dibasic Sodium Phosphate 7 g	Saline laxative
Monobasic Sodium Phosphate 19 g	Saline laxative

Use

- relieves occasional constipation
- this product generally produces bowel movement in 1 to 5 minutes

Warnings

Dosage warning: Using more than one enema in 24 hours can be harmful.

For rectal use only.

Do not use

- on children under 2 years of age

Ask a doctor before use if you

- have already used a laxative for more than 3 days
- have kidney disease, have heart problems, or are dehydrated
- are 55 years of age or older
- are on a sodium-restricted diet
- have abdominal pain, nausea, or vomiting
- have a sudden change in bowel habits lasting more than 2 weeks

Ask a doctor or pharmacist before use

if you are taking any other drug. Take this product two or more hours before or after other drugs. Laxatives may affect how other drugs work.

When using this product

- do not use more than directed. Serious side effects may occur from excess dosage
- do not use for more than 3 days, without asking a doctor

Stop use and ask a doctor if

- you have rectal bleeding
- you have no bowel movement within 30 minutes of enema use
- you have symptoms of dehydration (thirstiness, dizziness, vomiting, urinating less often than normal)

These symptoms may indicate a serious condition.

If pregnant or breast-feeding, ask a health professional before use.

Keep out of reach of children. If swallowed, get medical help or contact a Poison Control Center right away: 800-222-1222.

Enema

Laxative

Complete, Ready-to-Use

SODIUM PHOSPHATES
RECTAL SOLUTION

Drug Facts (continued)

Directions (or as directed by a doctor)

Single daily dosage (per 24 hours)
Do not use if taking another sodium phosphate product.
Do not use more unless directed by a doctor. See Warnings.

Adults and children 12 years of age and older	1 bottle once daily
Children 2 to under 12 years of age	Use Pediatric Enema
Children under 2 years of age	DO NOT USE

Other information

- each 118 mL contains sodium 4.3 g
- store at 15 to 30°C (59 to 86°F)
- additional liquids by mouth are recommended while using this product
- Tamper Evident: DO NOT USE IF TOP OR BOTTOM FLAP OF CARTON IS TORN OR MISSING.

Inactive ingredients

benzalkonium chloride, disodium EDTA, purified water

Questions or comments?

1-866-323-0107

* This product is not manufactured or distributed by C.B. Fleet Company Inc., owner of the registered trademark Fleet®.



1 Bottle
4.5 Fl Oz (133 mL)

PRINCIPAL DISPLAY PANEL - 133 mL Bottle Carton - 2 Bottles

TWIN PACK

QC®
QUALITY
CHOICE

NDC# 83324-293-90

* Compare to the
Active Ingredients
in FLEET® Enema

Enema

Laxative

Complete, Ready-to-Use

SODIUM PHOSPHATES
RECTAL SOLUTION

Not Made with
Natural Rubber Latex

Comfortable,
Lubricated Tip

Works In
Minutes

2
Bottles

4.5 Fl Oz (133 mL) Each

PL21028
V17

CAUTION:
REMOVE
PROTECTIVE
SHIELD
BEFORE
INSERTING

Positions for using this enema

Left-side position: Lie on left side with knees bent and arms resting comfortably.



Knee-chest position: Kneel, then lower head and chest forward until left side of face is resting on surface with left arm folded comfortably.



How to use this enema

- **REMOVE PROTECTIVE SHIELD BEFORE INSERTING.** Hold bottle upright, grasping bottle cap with fingers. Grasp protective shield with other hand and pull gently to remove.



- **ADMINISTERING ENEMA:**
 - With steady pressure, gently insert enema tip into rectum with a slight side-to-side movement, with tip pointing toward navel. Insertion may be easier if person receiving enema bears down, as if having a bowel movement. Doing so helps relax muscles around anus.
 - Do not force enema tip into rectum. Stop using if tip is hard to insert. Forcing the tip into the rectum can cause injury (especially if you have hemorrhoids). If enema tip causes rectal bleeding or pain, get immediate medical care.
 - Squeeze bottle until nearly all liquid is gone. It is not necessary to empty bottle completely, as it contains more liquid than needed.
 - Remove tip from rectum and stay in position until urge to evacuate is strong (usually 1 to 5 minutes). If no urge is felt after 5 minutes of using, try to empty bowel. Call a doctor promptly if no liquid comes out of the rectum after 30 minutes because dehydration could occur.

**Bottle, cap and shield are
Not Made with Natural
Rubber Latex**

Allergic reaction to materials containing Latex is a growing and serious medical problem.

Do not use if top or bottom flap
is torn or missing.

Tamper Resistant

Laxative

Enema



TWIN PACK



NDC# 83324-293-90

* Compare to the
Active Ingredients
in FLEET® Enema

Enema

Laxative

Complete, Ready-to-Use
**SODIUM PHOSPHATES
RECTAL SOLUTION**

Not Made with
Natural Rubber Latex

Comfortable,
Lubricated Tip

Works In
Minutes



2 Bottles
4.5 Fl Oz (133 mL) Each

CARTON SEALED
FOR SAFETY.
DO NOT USE
IF TOP OR
BOTTOM FLAP
IS TORN OR
MISSING.



Distributed by C.D.M.A., Inc.®
43157 W 9 Mile Rd
Novi, MI 48375
www.qualitychoice.com
Questions: 800-935-2362

Enema

Laxative

Complete, Ready-to-Use

SODIUM PHOSPHATES
RECTAL SOLUTION

Complete Enema
in a Disposable
Squeeze Bottle
with Soft,
Pre-Lubricated Tip

Protective Shield
Prevents
Contamination

Comfortable,
Lubricated Tip
for Ease of
Insertion

One-Way
Safety
Valve
Controls
Flow And
Prevents
Reflux

Easy, Soft
Squeeze
Bottle



Drug Facts

Active ingredients (in each 118 mL delivered dose)	Purpose
Dibasic Sodium Phosphate 7 g	Saline laxative
Monobasic Sodium Phosphate 19 g	Saline laxative

Use

- relieves occasional constipation
- this product generally produces bowel movement in 1 to 5 minutes

Warnings

Dosage warning: Using more than one enema in 24 hours can be harmful.

For rectal use only.

Do not use ■ on children under 2 years of age

Ask a doctor before use if you

- have already used a laxative for more than 3 days
- have kidney disease, have heart problems, or are dehydrated
- are 55 years of age or older
- are on a sodium-restricted diet
- have abdominal pain, nausea, or vomiting
- have a sudden change in bowel habits lasting more than 2 weeks

Ask a doctor or pharmacist before use if you are taking any other drug. Take this product two or more hours before or after other drugs. Laxatives may affect how other drugs work.

When using this product

- do not use more than directed. Serious side effects may occur from excess dosage
- do not use for more than 3 days, without asking a doctor

Stop use and ask a doctor if

- you have rectal bleeding
- you have no bowel movement within 30 minutes of enema use
- you have symptoms of dehydration (thirstiness, dizziness, vomiting, urinating less often than normal)

These symptoms may indicate a serious condition.

If pregnant or breast-feeding, ask a health professional before use.

Keep out of reach of children. If swallowed, get medical help or contact a Poison Control Center right away: 800-222-1222.

Directions (or as directed by a doctor)

Single daily dosage (per 24 hours)

Do not use if taking another sodium phosphate product.

Do not use more unless directed by a doctor. See Warnings.

Adults and children 12 years of age and older	1 bottle once daily
Children 2 to under 12 years of age	Use Pediatric Enema
Children under 2 years of age	DO NOT USE

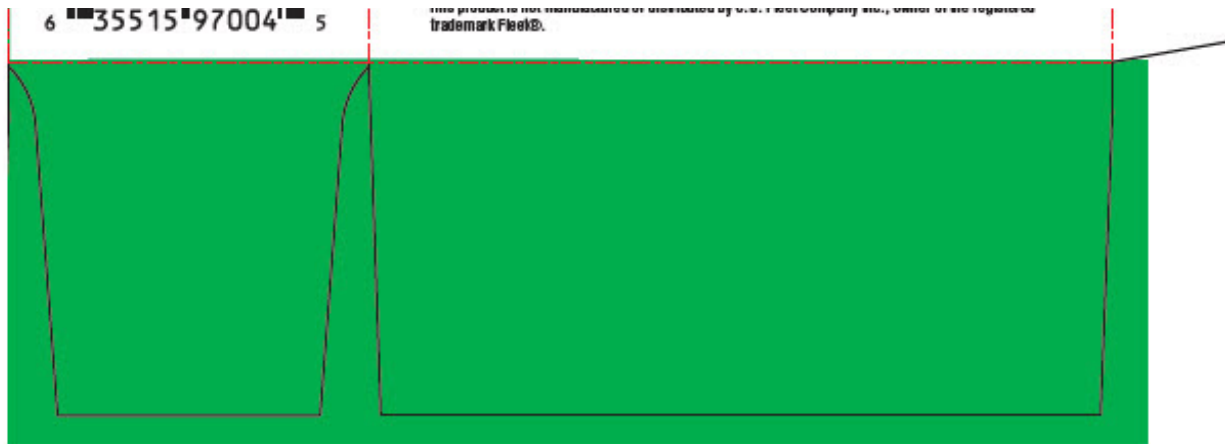
Other information

- each 118 mL contains sodium 4.3 g
- store at 15 to 30°C (59 to 86°F)
- additional liquids by mouth are recommended while using this product
- Tamper Evident: DO NOT USE IF TOP OR BOTTOM FLAP OF CARTON IS TORN OR MISSING.

Inactive ingredients

benzalkonium chloride, disodium EDTA, purified water

Questions or comments? 1-866-323-0107



QUALITY CHOICE LAXATIVE

sodium phosphate, dibasic, unspecified form and sodium phosphate, monobasic, unspecified form enema

Product Information

Product Type	HUMAN OTC DRUG	Item Code (Source)	NDC:83324-292
Route of Administration	RECTAL		

Active Ingredient/Active Moiety

Ingredient Name	Basis of Strength	Strength
SODIUM PHOSPHATE, DIBASIC, UNSPECIFIED FORM (UNII: GR686LBA74) (PHOSPHATE ION - UNII: NK08V8K8HR)	SODIUM PHOSPHATE, DIBASIC, UNSPECIFIED FORM	7 g in 118 mL
SODIUM PHOSPHATE, MONOBASIC, UNSPECIFIED FORM (UNII: 3980JIH2SW) (PHOSPHATE ION - UNII: NK08V8K8HR)	SODIUM PHOSPHATE, MONOBASIC, UNSPECIFIED FORM	19 g in 118 mL

Inactive Ingredients

Ingredient Name	Strength
Benzalkonium Chloride (UNII: F5UM2KM3W7)	
EDETATE DISODIUM ANHYDROUS (UNII: 8NLQ36F6MM)	
Water (UNII: 059QF0K00R)	

Packaging

#	Item Code	Package Description	Marketing Start Date	Marketing End Date
1	NDC:83324-292-45	1 in 1 CARTON	06/01/2010	
1		133 mL in 1 BOTTLE; Type 0: Not a Combination Product		

Marketing Information

Marketing Category	Application Number or Monograph Citation	Marketing Start Date	Marketing End Date
OTC monograph drug	M007	06/01/2010	

QUALITY CHOICE LAXATIVE

sodium phosphate, dibasic, unspecified form and sodium phosphate, monobasic, unspecified form enema

Product Information

Product Type	HUMAN OTC DRUG	Item Code (Source)	NDC:83324-293
Route of Administration	RECTAL		

Active Ingredient/Active Moiety

Ingredient Name	Basis of Strength	Strength
SODIUM PHOSPHATE, DIBASIC, UNSPECIFIED FORM (UNII: GR686LBA74) (PHOSPHATE ION - UNII: NK08V8K8HR)	SODIUM PHOSPHATE, DIBASIC, UNSPECIFIED FORM	7 g in 118 mL
SODIUM PHOSPHATE, MONOBASIC, UNSPECIFIED FORM (UNII: 3980JIH2SW) (PHOSPHATE ION - UNII: NK08V8K8HR)	SODIUM PHOSPHATE, MONOBASIC, UNSPECIFIED FORM	19 g in 118 mL

Inactive Ingredients

Ingredient Name	Strength
Benzalkonium Chloride (UNII: F5UM2KM3W7)	
EDETATE DISODIUM ANHYDROUS (UNII: 8NLQ36F6MM)	
Water (UNII: 059QF0KO0R)	

Packaging

#	Item Code	Package Description	Marketing Start Date	Marketing End Date
1	NDC:83324-293-90	2 in 1 CARTON	06/01/2010	
1		133 mL in 1 BOTTLE; Type 0: Not a Combination Product		

Marketing Information

Marketing Category	Application Number or Monograph Citation	Marketing Start Date	Marketing End Date
OTC monograph drug	M007	06/01/2010	

Labeler - Chain Drug Marketing Association (011920774)

Establishment

Name	Address	ID/FEI	Business Operations
Natureplex LLC		062808196	MANUFACTURE(83324-292, 83324-293)

Revised: 12/2024

Chain Drug Marketing Association