

ELTROMBOPAG- eltrombopag tablet

Zydus Pharmaceuticals USA Inc.

HIGHLIGHTS OF PRESCRIBING INFORMATION

These highlights do not include all the information needed to use ELTROMBOPAG TABLETS safely and effectively. See full prescribing information for ELTROMBOPAG TABLETS.

ELTROMBOPAG tablets, for oral use

Initial U.S. Approval: 2008

WARNING: RISK FOR HEPATIC DECOMPENSATION IN PATIENTS WITH CHRONIC HEPATITIS C and RISK OF HEPATOTOXICITY

See full prescribing information for complete boxed warning.

In patients with chronic hepatitis C, eltrombopag in combination with interferon and ribavirin may increase the risk of hepatic decompensation. (5.1)

Eltrombopag may increase the risk of severe and potentially life-threatening hepatotoxicity. Monitor hepatic function and discontinue dosing as recommended. (5.2)

----- RECENT MAJOR CHANGES -----

Warnings and Precautions, Laboratory Test Interference (5.6) 6/2025

----- INDICATIONS AND USAGE -----

Eltrombopag is a thrombopoietin receptor agonist indicated:

- for the treatment of thrombocytopenia in adult and pediatric patients 1 year and older with persistent or chronic immune thrombocytopenia (ITP) who have had an insufficient response to corticosteroids, immunoglobulins or splenectomy. Eltrombopag should be used only in patients with ITP whose degree of thrombocytopenia and clinical condition increase the risk for bleeding. (1.1)
- for the treatment of thrombocytopenia in patients with chronic hepatitis C to allow the initiation and maintenance of interferon-based therapy. Eltrombopag should be used only in patients with chronic hepatitis C whose degree of thrombocytopenia prevents the initiation of interferon-based therapy or limits the ability to maintain interferon-based therapy. (1.2)
- in combination with standard immunosuppressive therapy for the first-line treatment of adult and pediatric patients 2 years and older with severe aplastic anemia. (1.3)
- for the treatment of patients with severe aplastic anemia who have had an insufficient response to immunosuppressive therapy. (1.3)

Limitations of Use:

- Eltrombopag tablets are not indicated for the treatment of patients with myelodysplastic syndrome (MDS). (1.4)
- Safety and efficacy have not been established in combination with direct-acting antiviral agents used without interferon for treatment of chronic hepatitis C infection. (1.4)

----- DOSAGE AND ADMINISTRATION -----

- Take eltrombopag without a meal or with a meal low in calcium (≤ 50 mg). Take eltrombopag at least 2 hours before or 4 hours after any medications or products containing polyvalent cations, such as antacids, calcium-rich foods and mineral supplements. (2.4, 7.1, 12.3)
- **Persistent or Chronic ITP:** Initiate eltrombopag at 50 mg orally once daily for most adult and pediatric patients 6 years and older and at 25 mg orally once daily for pediatric patients aged 1 year to 5 years. Dose reductions are needed for patients with hepatic impairment and some patients of East-/Southeast-Asian ancestry. Adjust to maintain platelet count greater than or equal to $50 \times 10^9/L$. Do not exceed 75 mg per day. (2.1, 8.6, 8.7)
- **Chronic Hepatitis C-associated Thrombocytopenia:** Initiate eltrombopag at 25 mg orally once daily for all patients. Adjust to achieve target platelet count required to initiate antiviral therapy. Do not exceed a daily dose of 100 mg. (2.2)
- **First-line Severe Aplastic Anemia:** Initiate eltrombopag orally once daily at 2.5 mg/kg (in pediatric patients aged 2 years to 5 years old), 75 mg (pediatric patients aged 6 years to 11 years old) or 150

mg for patients aged 12 years and older concurrently with standard immunosuppressive therapy. Reduce initial dose in patients of East-/Southeast-Asian ancestry. Modify dosage for toxicity or elevated platelet counts. (2.3, 8.7)

- **Refractory Severe Aplastic Anemia:** Initiate eltrombopag orally at 50 mg once daily. Reduce initial dose in patients with hepatic impairment or patients of East-/Southeast-Asian ancestry. Adjust to maintain platelet count greater than $50 \times 10^9/L$. Do not exceed 150 mg per day. (2.3, 8.6, 8.7)

DOSAGE FORMS AND STRENGTHS

- Tablets: 12.5 mg, 25 mg, 50 mg and 75 mg (3)

CONTRAINDICATIONS

None. (4)

WARNINGS AND PRECAUTIONS

- **Hepatotoxicity:** Monitor liver function before and during therapy. (5.2)
- **Increased Risk of Death and Progression of Myelodysplastic Syndromes to Acute Myeloid Leukemia.** (5.3)
- **Thrombotic/Thromboembolic Complications:** Portal vein thrombosis has been reported in patients with chronic liver disease receiving eltrombopag. Monitor platelet counts regularly. (5.4)

ADVERSE REACTIONS

Across all indications, the most common adverse reactions ($\geq 20\%$ in any indication) were: anemia, nausea, pyrexia, alanine aminotransferase increased, cough, fatigue, headache and diarrhea. (6.1)

To report SUSPECTED ADVERSE REACTIONS, contact Zydus Pharmaceuticals (USA) Inc. at 1-877-993-8779 or FDA at 1-800-FDA-1088 or www.fda.gov/medwatch.

USE IN SPECIFIC POPULATIONS

- **Lactation:** Advise women not to breastfeed during treatment. (8.2)

See 17 for PATIENT COUNSELING INFORMATION and Medication Guide.

Revised: 1/2026

FULL PRESCRIBING INFORMATION: CONTENTS*

WARNING: RISK FOR HEPATIC DECOMPENSATION IN PATIENTS WITH CHRONIC HEPATITIS C and RISK OF HEPATOTOXICITY

1 INDICATIONS AND USAGE

- 1.1 Treatment of Thrombocytopenia in Patients With Persistent or Chronic Immune Thrombocytopenia
- 1.2 Treatment of Thrombocytopenia in Patients With Hepatitis C Infection
- 1.3 Treatment of Severe Aplastic Anemia
- 1.4 Limitations of Use

2 DOSAGE AND ADMINISTRATION

- 2.1 Persistent or Chronic Immune Thrombocytopenia
- 2.2 Chronic Hepatitis C-Associated Thrombocytopenia
- 2.3 Severe Aplastic Anemia
- 2.4 Administration

3 DOSAGE FORMS AND STRENGTHS

4 CONTRAINDICATIONS

5 WARNINGS AND PRECAUTIONS

- 5.1 Hepatic Decompensation in Patients With Chronic Hepatitis C
- 5.2 Hepatotoxicity
- 5.3 Increased Risk of Death and Progression of Myelodysplastic Syndromes to Acute Myeloid Leukemia

5.4 Thrombotic/Thromboembolic Complications

5.5 Cataracts

5.6 Laboratory Test Interference

6 ADVERSE REACTIONS

6.1 Clinical Trials Experience

6.2 Postmarketing Experience

7 DRUG INTERACTIONS

7.1 Polyvalent Cations (Chelation)

7.2 Transporters

7.3 Protease Inhibitors

7.4 Peginterferon Alfa-2a/b Therapy

7.5 Interference with Clinical Laboratory Tests

8 USE IN SPECIFIC POPULATIONS

8.1 Pregnancy

8.2 Lactation

8.3 Females and Males of Reproductive Potential

8.4 Pediatric Use

8.5 Geriatric Use

8.6 Hepatic Impairment

8.7 Ethnicity

10 OVERDOSAGE

11 DESCRIPTION

12 CLINICAL PHARMACOLOGY

12.1 Mechanism of Action

12.2 Pharmacodynamics

12.3 Pharmacokinetics

13 NONCLINICAL TOXICOLOGY

13.1 Carcinogenesis, Mutagenesis, Impairment of Fertility

13.2 Animal Pharmacology and/or Toxicology

14 CLINICAL STUDIES

14.1 Persistent or Chronic ITP

14.2 Chronic Hepatitis C-Associated Thrombocytopenia

14.3 Severe Aplastic Anemia

16 HOW SUPPLIED/STORAGE AND HANDLING

16.1 Tablets

17 PATIENT COUNSELING INFORMATION

* Sections or subsections omitted from the full prescribing information are not listed.

FULL PRESCRIBING INFORMATION

WARNING: RISK FOR HEPATIC DECOMPENSATION IN PATIENTS WITH CHRONIC HEPATITIS C and RISK OF HEPATOTOXICITY

In patients with chronic hepatitis C, eltrombopag in combination with interferon and ribavirin may increase the risk of hepatic decompensation [see Warnings and Precautions (5.1)].

Eltrombopag may increase the risk of severe and potentially life-threatening hepatotoxicity. Monitor hepatic function and discontinue dosing as recommended [see Warnings and Precautions (5.2)].

1 INDICATIONS AND USAGE

1.1 Treatment of Thrombocytopenia in Patients With Persistent or Chronic Immune Thrombocytopenia

Eltrombopag tablets are indicated for the treatment of thrombocytopenia in adult and pediatric patients 1 year and older with persistent or chronic immune thrombocytopenia (ITP) who have had an insufficient response to corticosteroids, immunoglobulins or splenectomy. Eltrombopag tablets should be used only in patients with ITP whose degree of thrombocytopenia and clinical condition increase the risk for bleeding.

1.2 Treatment of Thrombocytopenia in Patients With Hepatitis C Infection

Eltrombopag tablets are indicated for the treatment of thrombocytopenia in patients with chronic hepatitis C to allow the initiation and maintenance of interferon-based therapy. Eltrombopag tablets should be used only in patients with chronic hepatitis C whose degree of thrombocytopenia prevents the initiation of interferon-based therapy or limits the ability to maintain interferon-based therapy.

1.3 Treatment of Severe Aplastic Anemia

- Eltrombopag tablets are indicated in combination with standard immunosuppressive therapy (IST) for the first-line treatment of adult and pediatric patients 2 years and older with severe aplastic anemia.
- Eltrombopag tablets are indicated for the treatment of patients with severe aplastic anemia who have had an insufficient response to immunosuppressive therapy.

1.4 Limitations of Use

- Eltrombopag tablets are not indicated for the treatment of patients with myelodysplastic syndromes (MDS) [see Warnings and Precautions (5.3)].
- Safety and efficacy have not been established in combination with direct-acting antiviral agents used without interferon for treatment of chronic hepatitis C infection.

2 DOSAGE AND ADMINISTRATION

2.1 Persistent or Chronic Immune Thrombocytopenia

Use the lowest dose of eltrombopag to achieve and maintain a platelet count greater than or equal to $50 \times 10^9/L$ as necessary to reduce the risk for bleeding. Dose

adjustments are based upon the platelet count response. Do not use eltrombopag to normalize platelet counts [see *Warnings and Precautions (5.4)*]. In clinical trials, platelet counts generally increased within 1 week to 2 weeks after starting eltrombopag and decreased within 1 week to 2 weeks after discontinuing eltrombopag [see *Clinical Studies (14.1)*].

Initial Dose Regimen

Adult and Pediatric Patients 6 Years and Older with ITP

Initiate eltrombopag at a dose of 50 mg orally once daily, except in patients who are of East-/Southeast-Asian ancestry or who have mild to severe hepatic impairment (Child-Pugh class A, B, C).

For patients of East-/Southeast-Asian ancestry with ITP, initiate eltrombopag at a reduced dose of 25 mg orally once daily [see *Use in Specific Populations (8.7)*, *Clinical Pharmacology (12.3)*].

For patients with ITP and mild, moderate or severe hepatic impairment (Child-Pugh class A, B, C), initiate eltrombopag at a reduced dose of 25 mg orally once daily [see *Use in Specific Populations (8.6)*, *Clinical Pharmacology (12.3)*].

For patients of East-/Southeast-Asian ancestry with ITP and hepatic impairment (Child-Pugh class A, B, C), consider initiating eltrombopag at a reduced dose of 12.5 mg orally once daily [see *Clinical Pharmacology (12.3)*].

Pediatric Patients with ITP Aged 1 Year to 5 Years

Initiate eltrombopag at a dose of 25 mg orally once daily [see *Use in Specific Populations (8.7)*, *Clinical Pharmacology (12.3)*].

Monitoring and Dose Adjustment

After initiating eltrombopag, adjust the dose to achieve and maintain a platelet count greater than or equal to $50 \times 10^9/\text{L}$ as necessary to reduce the risk for bleeding. Do not exceed a dose of 75 mg daily. Monitor clinical hematology and liver tests regularly throughout therapy with eltrombopag and modify the dosage regimen of eltrombopag based on platelet counts as outlined in Table 1. During therapy with eltrombopag, assess complete blood counts (CBCs) with differentials, including platelet counts, weekly until a stable platelet count has been achieved. Obtain CBCs with differentials, including platelet counts, monthly thereafter.

When switching between the oral suspension and tablet, assess platelet counts weekly for 2 weeks and then follow standard monthly monitoring.

Table 1 Dose Adjustments of Eltrombopag in Patients With Persistent or Chronic Immune Thrombocytopenia

Platelet count result	Dose adjustment or response
< $50 \times 10^9/\text{L}$ following at least 2 weeks of eltrombopag	Increase daily dose by 25 mg/day to a maximum of 75 mg/day. For patients taking 12.5 mg once daily, increase the dose to 25 mg daily before increasing the dose amount by 25 mg.
	Decrease the daily dose by 25 mg. Wait 2

$\geq 200 \times 10^9/\text{L}$ to $\leq 400 \times 10^9/\text{L}$ at any time	weeks to assess the effects of this and any subsequent dose adjustments. For patients taking 25 mg once daily, decrease the dose to 12.5 mg once daily.
$> 400 \times 10^9/\text{L}$	Stop eltrombopag; increase the frequency of platelet monitoring to twice weekly. Once the platelet count is $< 150 \times 10^9/\text{L}$, reinstitute therapy at a daily dose reduced by 25 mg. For patients taking 25 mg once daily, reinstitute therapy at a daily dose of 12.5 mg.
$> 400 \times 10^9/\text{L}$ after 2 weeks of therapy at lowest dose of eltrombopag	Discontinue eltrombopag.

In patients with ITP and hepatic impairment (Child-Pugh class A, B, C), after initiating eltrombopag or after any subsequent dosing increase, wait 3 weeks before increasing the dose.

Modify the dosage regimen of concomitant ITP medications, as medically appropriate, to avoid excessive increases in platelet counts during therapy with eltrombopag. Do not administer more than one dose of eltrombopag within any 24 hour period.

Discontinuation

Discontinue eltrombopag if the platelet count does not increase to a level sufficient to avoid clinically important bleeding after 4 weeks of therapy with eltrombopag at the maximum daily dose of 75 mg. Excessive platelet count responses, as outlined in Table 1 or important liver test abnormalities (e.g., transaminases and/or bilirubin) also necessitate discontinuation of eltrombopag [see *Warnings and Precautions (5.2,5.6)* and *Drug Interactions (7.5)*]. Obtain CBCs with differentials, including platelet counts, weekly for at least 4 weeks following discontinuation of eltrombopag.

2.2 Chronic Hepatitis C-Associated Thrombocytopenia

Use the lowest dose of eltrombopag to achieve and maintain a platelet count necessary to initiate and maintain antiviral therapy with pegylated interferon and ribavirin. Dose adjustments are based upon the platelet count response. Do not use eltrombopag to normalize platelet counts [see *Warnings and Precautions (5.4)*]. In clinical trials, platelet counts generally began to rise within the first week of treatment with eltrombopag [see *Clinical Studies (14.2)*].

Initial Dose Regimen

Initiate eltrombopag at a dose of 25 mg orally once daily.

Monitoring and Dose Adjustment

Adjust the dose of eltrombopag in 25 mg increments every 2 weeks as necessary to achieve the target platelet count required to initiate antiviral therapy. Monitor platelet counts every week prior to starting antiviral therapy.

During antiviral therapy, adjust the dose of eltrombopag to avoid dose reductions of

peginterferon. Monitor CBCs with differentials, including platelet counts, weekly during antiviral therapy until a stable platelet count is achieved. Monitor platelet counts monthly thereafter. Do not exceed a dose of 100 mg daily. Monitor clinical hematology and liver tests (e.g., transaminases and bilirubin) regularly throughout therapy with eltrombopag [see *Drug Interactions* (7.5)].

For specific dosage instructions for peginterferon or ribavirin, refer to their respective prescribing information.

Table 2 Dose Adjustments of Eltrombopag in Adults With Thrombocytopenia Due to Chronic Hepatitis C

Platelet count result	Dose adjustment or response
< 50 x 10 ⁹ /L following at least 2 weeks of eltrombopag	Increase daily dose by 25 mg/day to a maximum of 100 mg/day.
≥ 200 x 10 ⁹ /L to ≤ 400 x 10 ⁹ /L at any time	Decrease the daily dose by 25 mg. Wait 2 weeks to assess the effects of this and any subsequent dose adjustments.
> 400 x 10 ⁹ /L	Stop eltrombopag; increase the frequency of platelet monitoring to twice weekly. Once the platelet count is < 150 x 10 ⁹ /L, reinstitute therapy at a daily dose reduced by 25 mg. For patients taking 25 mg once daily, reinstitute therapy at a daily dose of 12.5 mg.
> 400 x 10 ⁹ /L after 2 weeks of therapy at lowest dose of eltrombopag	Discontinue eltrombopag.

Discontinuation

The prescribing information for pegylated interferon and ribavirin include recommendations for antiviral treatment discontinuation for treatment futility. Refer to pegylated interferon and ribavirin prescribing information for discontinuation recommendations for antiviral treatment futility.

Eltrombopag should be discontinued when antiviral therapy is discontinued. Excessive platelet count responses, as outlined in Table 2 or important liver test abnormalities also necessitate discontinuation of eltrombopag [see *Warnings and Precautions* (5.2)].

2.3 Severe Aplastic Anemia

First-Line Severe Aplastic Anemia

Initiate eltrombopag concurrently with standard immunosuppressive therapy [see *Clinical Studies* (14.3)].

Initial Dose Regimen

The recommended initial dose regimen is listed in Table 3. Do not exceed the initial dose

of eltrombopag.

Table 3 Recommended Initial Eltrombopag Dose Regimen in the First-Line Treatment of Severe Aplastic Anemia

Age	Dose regimen
Patients 12 years and older	150 mg orally once daily for 6 months
Pediatric patients 6 years to 11 years	75 mg orally once daily for 6 months
Pediatric patients 2 years to 5 years	2.5 mg/kg orally once daily for 6 months

For patients with severe aplastic anemia of East-/Southeast-Asian ancestry or those with mild, moderate or severe hepatic impairment (Child-Pugh class A, B, C), decrease the initial eltrombopag dose by 50% as listed in Table 4 [see *Use in Specific Populations* (8.6, 8.7), *Clinical Pharmacology* (12.3)].

If baseline alanine aminotransferase (ALT) or aspartate aminotransferase (AST) levels are $> 6 \times$ upper limit of normal (ULN), do not initiate eltrombopag until transaminase levels are $< 5 \times$ ULN. Determine the initial dose for these patients based on Table 3 or Table 4.

Table 4 Recommended Initial Eltrombopag Dose Regimen for Patients of East-/Southeast-Asian Ancestry or Those With Mild, Moderate or Severe Hepatic Impairment (Child-Pugh class A, B, C) in the First-Line Treatment of Severe Aplastic Anemia

Age	Dose regimen
Patients 12 years and older	75 mg orally once daily for 6 months
Pediatric patients 6 years to 11 years	37.5 mg orally once daily for 6 months
Pediatric patients 2 years to 5 years	1.25 mg/kg orally once daily for 6 months

Monitoring and Dose Adjustment for Eltrombopag

Perform clinical hematology and liver tests regularly throughout therapy with eltrombopag [see *Warnings and Precautions* (5.2)].

Modify the dosage regimen of eltrombopag based on platelet counts as outlined in Table 5.

Table 5 Dose Adjustments of Eltrombopag for Elevated Platelet Counts in the First-Line Treatment of Severe Aplastic Anemia

Platelet count result	Dose adjustment or response
$> 200 \times 10^9/L$ to < 400	Decrease the daily dose by 25 mg every 2 weeks to lowest dose that maintains platelet

$< 200 \times 10^9/L$ to $\geq 400 \times 10^9/L$	count $\geq 50 \times 10^9/L$. In pediatric patients under 12 years of age, decrease the dose by 12.5 mg.
$> 400 \times 10^9/L$	Discontinue eltrombopag for one week. Once the platelet count is $< 200 \times 10^9/L$, reinitiate eltrombopag at a daily dose reduced by 25 mg (or 12.5 mg in pediatric patients under 12 years of age).

Table 6 summarizes the recommendations for dose interruption, reduction or discontinuation of eltrombopag in the management of elevated liver transaminase levels and thromboembolic events.

Table 6 Recommended Dose Modifications for Eltrombopag for ALT or AST Elevations and Thromboembolic Events

Event	Recommendation
ALT or AST elevations	<p>Increase in ALT or AST $> 6 \times ULN$ Discontinue eltrombopag. Once ALT or AST is $< 5 \times ULN$, reinitiate eltrombopag at the same dose.</p> <p>Increase in ALT or AST $> 6 \times ULN$ after reinitiating eltrombopag Discontinue eltrombopag and monitor ALT or AST at least every 3 days to 4 days. Once ALT or AST is $< 5 \times ULN$, reinitiate eltrombopag at a daily dose reduced by 25 mg compared to the previous dose.</p> <p>If ALT or AST returns to $> 6 \times ULN$ on the reduced dose Reduce the daily dose of eltrombopag by 25 mg until ALT or AST is $< 5 \times ULN$. In pediatric patients under 12 years of age, reduce the daily dose by at least 15% to the nearest dose that can be administered.</p>
Thromboembolic events (e.g., deep vein thrombosis, pulmonary embolus, stroke, myocardial infarction)	Discontinue eltrombopag but remain on horse antithymocyte globulin (h-ATG) and cyclosporine.

Abbreviations: ALT, alanine aminotransferase; AST, aspartate aminotransferase; ULN, upper limit of normal.

The total duration of eltrombopag treatment is 6 months.

Refractory Severe Aplastic Anemia

Use the lowest dose of eltrombopag to achieve and maintain a hematologic response. Dose adjustments are based upon the platelet count. Hematologic response requires dose titration, generally up to 150 mg and may take up to 16 weeks after starting

eltrombopag [see *Clinical Studies (14.3)*].

Initial Dose Regimen

Initiate eltrombopag at a dose of 50 mg orally once daily.

For patients with severe aplastic anemia of East-/Southeast-Asian ancestry or those with mild, moderate or severe hepatic impairment (Child-Pugh class A, B, C), initiate eltrombopag at a reduced dose of 25 mg orally once daily [see *Use in Specific Populations (8.6, 8.7)*, *Clinical Pharmacology (12.3)*].

Monitoring and Dose Adjustment

Adjust the dose of eltrombopag in 50 mg increments every 2 weeks as necessary to achieve the target platelet count greater than or equal to $50 \times 10^9/L$ as necessary. Do not exceed a dose of 150 mg daily. Monitor clinical hematology and liver tests regularly throughout therapy with eltrombopag and modify the dosage regimen of eltrombopag based on platelet counts as outlined in Table 7.

Table 7 Dose Adjustments of Eltrombopag in Patients With Refractory Severe Aplastic Anemia

Platelet count result	Dose adjustment or response
< $50 \times 10^9/L$ following at least 2 weeks of eltrombopag	Increase daily dose by 50 mg/day to a maximum of 150 mg/day. For patients taking 25 mg once daily, increase the dose to 50 mg daily before increasing the dose amount by 50 mg.
$\geq 200 \times 10^9/L$ to $\leq 400 \times 10^9/L$ at any time	Decrease the daily dose by 50 mg. Wait 2 weeks to assess the effects of this and any subsequent dose adjustments.
> $400 \times 10^9/L$	Stop eltrombopag for 1 week. Once the platelet count is < $150 \times 10^9/L$, reinstitute therapy at a dose reduced by 50 mg.
> $400 \times 10^9/L$ after 2 weeks of therapy at lowest dose of eltrombopag	Discontinue eltrombopag.

For patients who achieve tri-lineage response, including transfusion independence, lasting at least 8 weeks: the dose of eltrombopag may be reduced by 50% [see *Clinical Studies (14.3)*]. If counts remain stable after 8 weeks at the reduced dose, then discontinue eltrombopag and monitor blood counts. If platelet counts drop to less than $30 \times 10^9/L$, hemoglobin to less than 9 g/dL or absolute neutrophil count (ANC) to less than $0.5 \times 10^9/L$, eltrombopag may be reinitiated at the previous effective dose.

Discontinuation

If no hematologic response has occurred after 16 weeks of therapy with eltrombopag, discontinue therapy. If new cytogenetic abnormalities are observed, consider discontinuation of eltrombopag [see *Adverse Reactions (6.1)*]. Excessive platelet count responses (as outlined in Table 7) or important liver test abnormalities also necessitate

discontinuation of eltrombopag [see *Warnings and Precautions* (5.2)].

2.4 Administration

Administration of Tablets

Take eltrombopag tablets without a meal or with a meal low in calcium (≤ 50 mg). Take eltrombopag tablets at least 2 hours before or 4 hours after other medications (e.g., antacids), calcium-rich foods (containing > 50 mg calcium e.g., dairy products, calcium-fortified juices and certain fruits and vegetables) or supplements containing polyvalent cations, such as iron, calcium, aluminum, magnesium, selenium and zinc [see *Drug Interactions* (7.1), *Clinical Pharmacology* (12.3)].

Do not split, chew or crush tablets and mix with food or liquids.

3 DOSAGE FORMS AND STRENGTHS

- Eltrombopag tablets, 12.5 mg are white to light blue, round, biconvex, film-coated tablets debossed with "I" on one side and plain on the other.
- Eltrombopag tablets, 25 mg are light yellow, round, biconvex, film-coated tablets debossed with "I7" on one side and plain on the other.
- Eltrombopag tablets, 50 mg are light blue, round, biconvex, film-coated tablets debossed with "112" on one side and plain on the other.
- Eltrombopag tablets, 75 mg are light purple, round, biconvex, film-coated tablets debossed with "I17" on one side and plain on the other.

4 CONTRAINDICATIONS

None.

5 WARNINGS AND PRECAUTIONS

5.1 Hepatic Decompensation in Patients With Chronic Hepatitis C

In patients with chronic hepatitis C, eltrombopag in combination with interferon and ribavirin may increase the risk of hepatic decompensation. In two controlled clinical trials in patients with chronic hepatitis C and thrombocytopenia, ascites and encephalopathy occurred more frequently on the arm receiving treatment with eltrombopag plus antivirals (7%) than the placebo plus antivirals arm (4%). Patients with low albumin levels (less than 3.5 g/dL) or Model for End-Stage Liver Disease (MELD) score greater than or equal to 10 at baseline had a greater risk for hepatic decompensation on the arm receiving treatment with eltrombopag plus antivirals. Discontinue eltrombopag if antiviral therapy is discontinued.

5.2 Hepatotoxicity

Eltrombopag may increase the risk of severe and potentially life-threatening hepatotoxicity [see *Adverse Reactions* (6.1)]. One patient ($< 1\%$) with ITP treated with eltrombopag in clinical trials experienced drug-induced liver injury. Eleven patients (1%) with chronic hepatitis C treated with eltrombopag in clinical trials experienced drug-induced liver injury.

Treatment of ITP, Chronic Hepatitis C-associated Thrombocytopenia and Refractory Severe Aplastic Anemia

Measure serum ALT, AST and bilirubin prior to initiation of eltrombopag, every 2 weeks during the dose adjustment phase and monthly following establishment of a stable dose[see *Drug Interactions* (7.5)]. Eltrombopag inhibits UDP-glucuronosyltransferase (UGT)1A1 and organic anion-transporting polypeptide (OATP)1B1, which may lead to indirect hyperbilirubinemia. If bilirubin is elevated, perform fractionation. Evaluate abnormal serum liver tests with repeat testing within 3 days to 5 days. If the abnormalities are confirmed, monitor serum liver tests weekly until resolved or stabilized. Discontinue eltrombopag if ALT levels increase to greater than or equal to 3 x ULN in patients with normal liver function or greater than or equal to 3 x baseline (or greater than 5 x ULN, whichever is the lower) in patients with pre-treatment elevations in transaminases and are:

- progressively increasing or
- persistent for greater than or equal to 4 weeks or
- accompanied by increased direct bilirubin or
- accompanied by clinical symptoms of liver injury or evidence for hepatic decompensation.

If the potential benefit for reinitiating treatment with eltrombopag is considered to outweigh the risk for hepatotoxicity, then consider cautiously reintroducing eltrombopag and measure serum liver tests weekly during the dose adjustment phase. Hepatotoxicity may reoccur if eltrombopag is reinitiated. If liver test abnormalities persist, worsen or recur, then permanently discontinue eltrombopag.

First-Line Treatment of Severe Aplastic Anemia

Measure ALT, AST and bilirubin prior to initiation of eltrombopag, every other day while hospitalized for h-ATG therapy and then every 2 weeks during treatment. During treatment, manage increases in ALT or AST levels as recommended in Table 6.

5.3 Increased Risk of Death and Progression of Myelodysplastic Syndromes to Acute Myeloid Leukemia

A randomized, double-blind, placebo-controlled, multicenter trial in patients with International Prognostic Scoring System (IPSS) intermediate-1, intermediate-2 or high risk MDS with thrombocytopenia, receiving azacitidine in combination with either eltrombopag (n=179) or placebo (n=177) was terminated due to lack of efficacy and safety reasons, including increased progression to acute myeloid leukemia (AML). Patients received eltrombopag or placebo at a starting dose of 200 mg once daily, up to a maximum of 300 mg once daily, in combination with azacitidine for at least six cycles. The incidence of death (overall survival) was 32% (57/179) in the eltrombopag arm versus 29% (51/177) in the placebo arm (HR [95% CI] = 1.42 [0.97, 2.08], showing an increased relative risk of death in this trial by 42% in the eltrombopag arm). The incidence of progression to AML was 12% (21/179) in the eltrombopag arm versus 6% (10/177) in the placebo arm (HR [95% CI] = 2.66 [1.31, 5.41], showing an increased relative risk of progression to AML in this trial by 166% in the eltrombopag arm).

5.4 Thrombotic/Thromboembolic Complications

Thrombotic/thromboembolic complications may result from increases in platelet counts

with eltrombopag. Reported thrombotic/thromboembolic complications included both venous and arterial events and were observed at low and at normal platelet counts.

Consider the potential for an increased risk of thromboembolism when administering eltrombopag to patients with known risk factors for thromboembolism (e.g., Factor V Leiden, ATIII deficiency, antiphospholipid syndrome, chronic liver disease). To minimize the risk for thrombotic/thromboembolic complications, do not use eltrombopag in an attempt to normalize platelet counts. Follow the dose adjustment guidelines to achieve and maintain target platelet counts [see *Dosage and Administration* (2.1, 2.2, 2.3)].

In two controlled clinical trials in patients with chronic hepatitis C and thrombocytopenia, 3% (31/955) treated with eltrombopag experienced a thrombotic event compared with 1% (5/484) on placebo. The majority of events were of the portal venous system (1% in patients treated with eltrombopag versus less than 1% for placebo).

In a controlled trial in patients with chronic liver disease and thrombocytopenia not related to ITP undergoing elective invasive procedures (N=292), the risk of thrombotic events was increased in patients treated with 75 mg of eltrombopag once daily. Seven thrombotic complications (six patients) were reported in the group that received eltrombopag and three thrombotic complications were reported in the placebo group (two patients). All of the thrombotic complications reported in the group that received eltrombopag were portal vein thrombosis (PVT). Symptoms of PVT included abdominal pain, nausea, vomiting and diarrhea. Five of the six patients in the group that received eltrombopag experienced a thrombotic complication within 30 days of completing treatment with eltrombopag and at a platelet count above $200 \times 10^9/L$. The risk of portal venous thrombosis was increased in thrombocytopenic patients with chronic liver disease treated with 75 mg of eltrombopag once daily for 2 weeks in preparation for invasive procedures.

5.5 Cataracts

In the three controlled clinical trials in adults with persistent or chronic ITP, cataracts developed or worsened in 15 (7%) patients who received 50 mg of eltrombopag daily and 8 (7%) placebo-group patients. In the extension trial, cataracts developed or worsened in 11% of patients who underwent ocular examination prior to therapy with eltrombopag. In the two controlled clinical trials in patients with chronic hepatitis C and thrombocytopenia, cataracts developed or worsened in 8% of patients treated with eltrombopag and 5% of patients treated with placebo.

Cataracts were observed in toxicology studies of eltrombopag in rodents [see *Nonclinical Toxicology* (13.2)]. Perform a baseline ocular examination prior to administration of eltrombopag and, during therapy with eltrombopag, regularly monitor patients for signs and symptoms of cataracts.

5.6 Laboratory Test Interference

Eltrombopag is highly colored and can cause patient sample discoloration, which can interfere with some clinical laboratory tests. Inaccurate test results that are inconsistent with clinical observations may occur for multiple clinical chemistry tests including bilirubin and creatinine. In addition, other lab tests may be impacted, including but not limited to total protein and albumin, and incorrect test results may be generated if there is eltrombopag in the patient's specimen. Communicate to the lab conducting the testing if your patient is taking eltrombopag. Re-testing using other methods may also help in

determining the validity of the test results [see *Drug Interactions (7.5)*].

6 ADVERSE REACTIONS

The following clinically significant adverse reactions associated with eltrombopag are described in other sections.

- Hepatic Decompensation in Patients with Chronic Hepatitis C [see *Warnings and Precautions (5.1)*]
- Hepatotoxicity [see *Warnings and Precautions (5.2)*]
- Increased Risk of Death and Progression of Myelodysplastic Syndromes to Acute Myeloid Leukemia [see *Warnings and Precautions (5.3)*]
- Thrombotic/Thromboembolic Complications [see *Warnings and Precautions (5.4)*]
- Cataracts [see *Warnings and Precautions (5.5)*]

6.1 Clinical Trials Experience

Because clinical trials are conducted under widely varying conditions, adverse reaction rates observed in the clinical trials of a drug cannot be directly compared with rates in the clinical trials of another drug and may not reflect the rates observed in practice.

Persistent or Chronic Immune Thrombocytopenia

Adults

In clinical trials, hemorrhage was the most common serious adverse reaction and most hemorrhagic reactions followed discontinuation of eltrombopag. Other serious adverse reactions included thrombotic/thromboembolic complications [see *Warnings and Precautions (5.4)*]. The data described below reflect exposure of eltrombopag to patients with persistent or chronic ITP aged 18 years to 85 years, of whom 66% were female, in three placebo-controlled trials and one open-label extension trial [see *Clinical Studies (14.1)*]. Eltrombopag was administered to 330 patients for at least 6 months and 218 patients for at least 1 year.

Table 8 presents the most common adverse drug reactions (experienced by greater than or equal to 3% of patients receiving eltrombopag) from the three placebo-controlled trials, with a higher incidence in eltrombopag versus placebo.

Table 8 Adverse Reactions ($\geq 3\%$) From Three Placebo-controlled Trials in Adults With Persistent or Chronic Immune Thrombocytopenia

Adverse reaction	Eltrombopag 50 mg n=241 (%)	Placebo n=128 (%)
Nausea	9	3
Diarrhea	9	7
Upper respiratory tract infection	7	6
Vomiting	6	< 1
Urinary tract infection ^a	5	4
Increased ALT	5	3

Myalgia	5	2
Oropharyngeal pain	4	3
Increased AST	4	2
Pharyngitis	4	2
Back pain	3	2
Influenza	3	2
Paresthesia	3	2
Rash	3	2

Abbreviations: ALT, alanine aminotransferase; AST, aspartate aminotransferase.

^a Includes PTs of urinary tract infection, cystitis, urinary tract infection bacterial and bacteriuria.

In the three controlled clinical persistent or chronic ITP trials, alopecia, musculoskeletal pain, blood alkaline phosphatase increased and dry mouth were the adverse reactions reported in 2% of patients treated with eltrombopag and in no patients who received placebo.

Among 302 patients with persistent or chronic ITP who received eltrombopag in the single-arm extension trial, the adverse reactions occurred in a pattern similar to that seen in the placebo-controlled trials. Table 9 presents the most common treatment-related adverse reactions (experienced by greater than or equal to 3% of patients receiving eltrombopag) from the extension trial.

Table 9 Treatment-related Adverse Reactions ($\geq 3\%$) From Extension Trial in Adults With Persistent or Chronic Immune Thrombocytopenia

Adverse reaction	Eltrombopag 50 mg n=302 (%)
Headache	10
ALT increased	5
AST increased	5
Cataract	5
Fatigue	5
Blood bilirubin increased	4
Nausea	4
Hyperbilirubinemia	3
Diarrhea	3

Abbreviations: ALT, alanine aminotransferase; AST, aspartate aminotransferase.

In the three controlled persistent or chronic ITP trials, serum liver test abnormalities (predominantly Grade 2 or less in severity) were reported in 11% and 7% of patients for eltrombopag and placebo, respectively. Four patients (1%) treated with eltrombopag and three patients in the placebo group (2%) discontinued treatment due to hepatobiliary laboratory abnormalities. Seventeen of the patients treated with eltrombopag in the controlled trials with hepatobiliary laboratory abnormalities were re-exposed to

eltrombopag in the extension trial. Eight of these patients again experienced liver test abnormalities (less than or equal to Grade 3) resulting in discontinuation of eltrombopag in one patient. In the extension persistent or chronic ITP trial, six additional patients had eltrombopag discontinued due to liver test abnormalities (less than or equal to Grade 3).

In the three controlled persistent or chronic ITP trials, cataracts developed or worsened in 7% of patients treated with eltrombopag and 7% of patients in the placebo group. All patients had documented, preexisting risk factors for cataractogenesis, including corticosteroid use. In the extension trial, cataracts developed or worsened in 11% of patients who underwent ocular examination prior to therapy with eltrombopag. Seventy-two percent of patients had preexisting risk factors, including corticosteroid use.

The safety of eltrombopag was also assessed in all patients treated in 7 adult persistent or chronic ITP clinical trials (N=763 eltrombopag-treated patients and 179 placebo-treated patients). Thromboembolic events were reported in 6% of eltrombopag-treated patients versus 0% of placebo-treated patients and thrombotic microangiopathy with acute renal failure was reported in < 1% of eltrombopag-treated patients versus 0% of placebo-treated patients.

In a placebo-controlled trial of eltrombopag in patients with chronic liver disease and thrombocytopenia not related to ITP, six patients treated with eltrombopag and one patient in the placebo group developed portal vein thromboses [see *Warnings and Precautions (5.4)*].

Pediatric Patients

The data described below reflect median exposure to eltrombopag of 91 days for 107 pediatric patients (aged 1 year to 17 years) with persistent or chronic ITP, of whom 53% were female, across the randomized phase of two placebo-controlled trials.

Table 10 presents the most common adverse drug reactions (experienced by greater than or equal to 3% of pediatric patients 1 year and older receiving eltrombopag) across the two placebo-controlled trials, with a higher incidence for eltrombopag versus placebo.

Table 10 Adverse Reactions ($\geq 3\%$) With a Higher Incidence for Eltrombopag Versus Placebo From Two Placebo-controlled Trials in Pediatric Patients 1 Year and Older With Persistent or Chronic Immune Thrombocytopenia

Adverse reaction	Eltrombopag n=107 (%)	Placebo n=50 (%)
Upper respiratory tract infection	17	6
Nasopharyngitis	12	4
Cough	9	0
Diarrhea	9	2
Pyrexia	9	8
Abdominal pain	8	4
Oropharyngeal pain	8	2
Toothache	6	0

ALT increased ^a	6	0
Rash	5	2
AST increased	4	0
Rhinorrhea	4	0

Abbreviations: ALT, alanine aminotransferase; AST, aspartate aminotransferase.

^a Includes adverse reactions or laboratory abnormalities > 3 x ULN.

In the two controlled clinical persistent or chronic ITP trials, cataracts developed or worsened in 2 (1%) patients treated with eltrombopag. Both patients had received chronic oral corticosteroids, a risk factor for cataractogenesis.

Chronic Hepatitis C-associated Thrombocytopenia

In the two placebo-controlled trials, 955 patients with chronic hepatitis C-associated thrombocytopenia received eltrombopag. Table 11 presents the most common adverse drug reactions (experienced by greater than or equal to 10% of patients receiving eltrombopag compared with placebo).

Table 11 Adverse Reactions (≥ 10% and Greater Than Placebo) From Two Placebo-controlled Trials in Adults With Chronic Hepatitis C

Adverse reaction	Eltrombopag + Peginterferon/Ribavirin n=955 (%)	Placebo + Peginterferon/Ribavirin n=484 (%)
Anemia	40	35
Pyrexia	30	24
Fatigue	28	23
Headache	21	20
Nausea	19	14
Diarrhea	19	11
Decreased appetite	18	14
Influenza-like illness	18	16
Insomnia ^a	16	15
Asthenia	16	13
Cough	15	12
Pruritus	15	13
Chills	14	9
Myalgia	12	10
Alopecia	10	6
Peripheral edema	10	5

^a Includes PTs of insomnia, initial insomnia and poor quality sleep.

Rash was reported in 9% and 7% of patients receiving eltrombopag and placebo,

respectively.

In the two controlled clinical trials in patients with chronic hepatitis C, hyperbilirubinemia was reported in 8% of patients receiving eltrombopag compared with 3% for placebo. Total bilirubin greater than or equal to 1.5 x ULN was reported in 76% and 50% of patients receiving eltrombopag and placebo, respectively. ALT or AST greater than or equal to 3 x ULN was reported in 34% and 38% of patients for eltrombopag and placebo, respectively.

In the two controlled clinical trials in patients with chronic hepatitis C, cataracts developed or worsened in 8% of patients treated with eltrombopag and 5% of patients treated with placebo.

The safety of eltrombopag was also assessed in all patients treated with eltrombopag in the two controlled trials, including patients who initially received eltrombopag in the pre-antiviral treatment phase of the trial and were later randomized to the placebo arm (N=1,520 eltrombopag-treated patients). Hepatic failure was reported in 0.8% of eltrombopag-treated patients and 0.4% of placebo-treated patients.

Severe Aplastic Anemia

First-Line Treatment of Severe Aplastic Anemia

The safety of eltrombopag was established based upon a single-arm trial of 153 patients with severe aplastic anemia who had not received prior definitive immunosuppressive therapy. In this trial, eltrombopag was administered in combination with horse antithymocyte globulin (h-ATG) and cyclosporine [see *Clinical Studies (14.3)*]. Among the 153 patients who were dosed in this trial, 92 patients were evaluable for safety of the concurrent use of eltrombopag, h-ATG and cyclosporine at the recommended dose and schedule.

In this cohort, eltrombopag was administered at up to 150 mg once daily on Day 1 to Month 6 (D1 to M6) in combination with h-ATG on Day 1 to Days 4 and cyclosporine for 6 months, followed by low dose of cyclosporine (maintenance dose) for an additional 18 months for patients who achieved a hematologic response at 6 months. The median duration of exposure to eltrombopag in this cohort was 183 days with 70% of patients exposed for > 24 weeks.

Table 12 presents the most common adverse reactions (experienced by greater than or equal to 5% of patients) associated with eltrombopag in the D1 to M6 cohort.

Table 12 Adverse Reactions ($\geq 5\%$) From One Open-label Trial in First-Line Treatment of Patients With Severe Aplastic Anemia

Adverse reaction	Eltrombopag n=92 (%)
ALT increased	29
AST increased	17
Blood bilirubin increased	17
Rash	8
Skin discoloration, including	5

Abbreviations: ALT, alanine aminotransferase; AST, aspartate aminotransferase.

In the eltrombopag D1 to M6 cohort, ALT increased (29%), AST increased (17%) and blood bilirubin increased (17%) were reported more frequently than in patients with refractory severe aplastic anemia (see Table 13).

New or worsening liver function laboratory abnormalities (CTCAE Grade 3 and Grade 4) in the eltrombopag D1 to M6 cohort were 15% and 2% for AST, 26% and 4% for ALT and 12% and 1% for bilirubin, respectively.

In this single-arm open-label clinical trial, ALT or AST $> 3 \times$ ULN with total bilirubin $> 1.5 \times$ ULN and ALT or AST $> 3 \times$ ULN with total bilirubin $> 2 \times$ ULN were reported in 44% and 32% of patients, respectively, in the eltrombopag D1 to M6 cohort.

Pediatric Patients

A total of 34 pediatric patients (2 patients 2 years to 5 years of age, 12 patients 6 years to 11 years of age and 20 patients 12 years to 16 years of age) were enrolled in this single-arm trial of which 26 pediatric patients were enrolled in the eltrombopag D1 to M6 cohort. In this cohort, the most frequent serious adverse reactions (experienced by $\geq 10\%$ of patients) were upper respiratory tract infection (12% in patients age 2 years to 16 years compared to 5% in patients 17 years of age and older, respectively) and rash (12% compared to 2%). The most common adverse reactions (experienced by $\geq 10\%$ of patients) associated with eltrombopag were ALT increased (23% in patients age 2 years to 16 years compared to 32% in patients 17 years of age and older, respectively), blood bilirubin increased (12% compared to 20%), AST increased (12% compared to 20%) and rash (12% compared to 6%).

Cytogenetic Abnormalities

In this trial, patients had bone marrow aspirates evaluated for cytogenetic abnormalities. Seven patients in the eltrombopag D1 to M6 cohort had a new cytogenetic abnormality reported of which 4 had the loss of chromosome 7; these 4 occurred within 6.1 months. Across all cohorts, clonal cytogenetic evolution occurred in 15 out of 153 (10%) patients. Of the 15 patients who experienced a cytogenetic abnormality: 7 patients had the loss of chromosome 7, 6 of which occurred within 6.1 months; 4 patients had chromosomal aberrations which were of unclear significance; 3 patients had a deletion of chromosome 13 and 1 patient had a follow-up bone marrow assessment at 5 years with features of dysplasia with hypercellularity concerning for potential development of MDS. It is unclear whether these findings occurred due to the underlying disease, the immunosuppressive therapy and/or treatment with eltrombopag.

Refractory Severe Aplastic Anemia

In the single-arm, open-label trial, 43 patients with refractory severe aplastic anemia received eltrombopag. Eleven patients (26%) were treated for greater than 6 months and 7 patients (16%) were treated for greater than 1 year. The most common adverse reactions (greater than or equal to 20%) were nausea, fatigue, cough, diarrhea and headache.

Table 13 Adverse Reactions ($\geq 10\%$) From One Open-label Trial

in Adults With Refractory Severe Aplastic Anemia

Adverse reaction	Eltrombopag n=43 (%)
Nausea	33
Fatigue	28
Cough	23
Diarrhea	21
Headache	21
Pain in extremity	19
Pyrexia	14
Dizziness	14
Oropharyngeal pain	14
Abdominal pain	12
Muscle spasms	12
Transaminases increased	12
Arthralgia	12
Rhinorrhea	12

Rash and hyperbilirubinemia were reported in 7% of patients; cataract was reported in 2% of patients.

In this trial, concurrent ALT or AST greater than 3 x ULN with total bilirubin greater than 1.5 x ULN were reported in 5% of patients. Total bilirubin greater than 1.5 x ULN occurred in 14% of patients.

In this trial, patients had bone marrow aspirates evaluated for cytogenetic abnormalities. Eight patients had a new cytogenetic abnormality reported on therapy, including 5 patients who had complex changes in chromosome 7.

6.2 Postmarketing Experience

The following adverse reactions have been identified during post approval use of eltrombopag. Because these reactions are reported voluntarily from a population of uncertain size, it is not always possible to reliably estimate the frequency or establish a causal relationship to drug exposure.

Skin and Subcutaneous Tissue Disorders

Skin discoloration, including hyperpigmentation and skin yellowing.

7 DRUG INTERACTIONS

7.1 Polyvalent Cations (Chelation)

Eltrombopag chelates polyvalent cations (such as iron, calcium, aluminum, magnesium, selenium and zinc) in foods, mineral supplements and antacids.

Take eltrombopag at least 2 hours before or 4 hours after any medications or products containing polyvalent cations, such as antacids, dairy products and mineral supplements

to avoid significant reduction in absorption of eltrombopag due to chelation [see *Dosage and Administration* (2.4), *Clinical Pharmacology* (12.3)].

7.2 Transporters

Use caution when concomitantly administering eltrombopag and drugs that are substrates of OATP1B1 (e.g., atorvastatin, bosentan, ezetimibe, fluvastatin, glyburide, olmesartan, pitavastatin, pravastatin, rosuvastatin, repaglinide, rifampin, simvastatin acid, SN-38 [active metabolite of irinotecan], valsartan) or breast cancer resistance protein (BCRP) (e.g., imatinib, irinotecan, lapatinib, methotrexate, mitoxantrone, rosuvastatin, sulfasalazine, topotecan). Monitor patients closely for signs and symptoms of excessive exposure to the drugs that are substrates of OATP1B1 or BCRP and consider reduction of the dose of these drugs, if appropriate. In clinical trials with eltrombopag, a dose reduction of rosuvastatin by 50% was recommended.

7.3 Protease Inhibitors

HIV Protease Inhibitors

No dose adjustment is recommended when eltrombopag is coadministered with lopinavir/ritonavir (LPV/RTV). Drug interactions with other HIV protease inhibitors have not been evaluated.

Hepatitis C Virus Protease Inhibitors

No dose adjustments are recommended when eltrombopag is coadministered with boceprevir or telaprevir. Drug interactions with other hepatitis C virus (HCV) protease inhibitors have not been evaluated.

7.4 Peginterferon Alfa-2a/b Therapy

No dose adjustments are recommended when eltrombopag is coadministered with peginterferon alfa-2a (PEGASYS®) or -2b (PEGINTRON®).

7.5 Interference with Clinical Laboratory Tests

Eltrombopag is highly colored and can cause patient sample discoloration, which is reported to interfere with some clinical laboratory tests, including, but not limited to bilirubin and creatinine.

Bilirubin Testing: Eltrombopag can cause both positive and negative interference with bilirubin assays. If the laboratory results for bilirubin are inconsistent with clinical observations, further evaluation of liver function should be performed to clarify the clinical status of the patient. Evaluating contemporaneous aminotransferase values (AST, ALT) may help determine the validity of normal total bilirubin levels in the presence of clinical jaundice.

Creatinine Testing: Eltrombopag can cause positive interference with creatinine measurements, leading to falsely elevated creatinine levels. In the event of an unexpected serum creatinine test result, further evaluation of renal function should be performed. Blood urea should be evaluated if serum creatinine is unexpectedly high.

Communicate to the lab conducting testing if the patient is taking eltrombopag. Re-testing using other methods may also help in determining the validity of the test results.

8 USE IN SPECIFIC POPULATIONS

8.1 Pregnancy

Risk Summary

Available data from a small number of published case reports and postmarketing experience with eltrombopag use in pregnant women are insufficient to assess any drug-associated risks for major birth defects, miscarriage or adverse maternal or fetal outcomes. In animal reproduction and developmental toxicity studies, oral administration of eltrombopag to pregnant rats during organogenesis resulted in embryoletality and reduced fetal weights at maternally toxic doses. These effects were observed at doses resulting in exposures that were six times the human clinical exposure based on area under the curve (AUC) in patients with persistent or chronic ITP at 75 mg/day and three times the AUC in patients with chronic hepatitis C at 100 mg/day (*see Data*).

The estimated background risk of major birth defects and miscarriage for the indicated population is unknown. All pregnancies have a background risk of birth defect, loss or other adverse outcomes. In the U.S. general population, the estimated background risk of major birth defects and of miscarriage in clinically recognized pregnancies is 2% to 4% and 15% to 20%, respectively.

Data

Animal Data

In an early embryonic development study, female rats received oral eltrombopag at doses of 10 mg/kg/day, 20 mg/kg/day or 60 mg/kg/day (0.8 times, 2 times and 6 times, respectively, the human clinical exposure based on AUC in patients with ITP at 75 mg/day and 0.3 times, 1 time and 3 times, respectively, the human clinical exposure based on AUC in patients with chronic hepatitis C at 100 mg/day). Increased pre- and post-implantation loss and reduced fetal weight were observed at the highest dose which also caused maternal toxicity.

In an embryo-fetal development study eltrombopag was administered orally to pregnant rats during the period of organogenesis at doses of 10 mg/kg/day, 20 mg/kg/day or 60 mg/kg/day (0.8 times, 2 times and 6 times, respectively, the human clinical exposure based on AUC in patients with ITP at 75 mg/day and 0.3 times, 1 time and 3 times, respectively, the human clinical exposure based on AUC in patients with chronic hepatitis C at 100 mg/day). Decreased fetal weights (6% to 7%) and a slight increase in the presence of cervical ribs were observed at the highest dose which also caused maternal toxicity. However, no evidence of major structural malformations was observed.

In an embryo-fetal development study eltrombopag was administered orally to pregnant rabbits during the period of organogenesis at doses of 30 mg/kg/day, 80 mg/kg/day or 150 mg/kg/day (0.04 times, 0.3 times and 0.5 times, respectively, the human clinical exposure based on AUC in patients with ITP at 75 mg/day and 0.02 times, 0.1 times and 0.3 times, respectively, the human clinical exposure based on AUC in patients with chronic hepatitis C at 100 mg/day). No evidence of fetotoxicity, embryoletality or teratogenicity was observed.

In a pre- and post-natal developmental toxicity study in pregnant rats (F0), oral eltrombopag was administered from gestation Day 6 through lactation Day 20. No adverse effects on maternal reproductive function or on the development of the

offspring (F1) were observed at doses up to 20 mg/kg/day (2 times the human clinical exposure based on AUC in patients with ITP at 75 mg/day and similar to the human clinical exposure based on AUC in patients with chronic hepatitis C at 100 mg/day). Eltrombopag was detected in the plasma of offspring (F1). The plasma concentrations in pups increased with dose following administration of drug to the F0 dams.

8.2 Lactation

Risk Summary

There are no data regarding the presence of eltrombopag or its metabolites in human milk, the effects on the breastfed child or the effects on milk production. However, eltrombopag was detected in the pups of lactating rats 10 days postpartum suggesting the potential for transfer during lactation. Due to the potential for serious adverse reactions in a breastfed child from eltrombopag, breastfeeding is not recommended during treatment.

8.3 Females and Males of Reproductive Potential

Contraception

Based on animal reproduction studies, eltrombopag can cause fetal harm when administered to a pregnant woman. Sexually-active females of reproductive potential should use effective contraception (methods that result in less than 1% pregnancy rates) when using eltrombopag during treatment and for at least 7 days after stopping treatment with eltrombopag.

8.4 Pediatric Use

The safety and efficacy of eltrombopag have been established in pediatric patients 1 year and older with persistent or chronic ITP and in pediatric patients 2 years and older with IST-naïve severe aplastic anemia (in combination with h-ATG and cyclosporine). Safety and efficacy in pediatric patients below the age of 1 year with ITP have not been established. Safety and efficacy in pediatric patients with thrombocytopenia associated with chronic hepatitis C and refractory severe aplastic anemia have not been established.

The safety and efficacy of eltrombopag in pediatric patients 1 year and older with persistent or chronic ITP were evaluated in two double-blind, placebo-controlled trials [see *Adverse Reactions* (6.1), *Clinical Studies* (14.1)]. The pharmacokinetics of eltrombopag have been evaluated in 168 pediatric patients 1 year and older with ITP dosed once daily [see *Clinical Pharmacology* (12.3)]. See *Dosage and Administration* (2.1) for dosing recommendations for pediatric patients 1 year and older.

The safety and efficacy of eltrombopag in combination with h-ATG and cyclosporine for the first-line treatment of severe aplastic anemia in pediatric patients 2 years and older were evaluated in a single-arm, open-label trial [see *Adverse Reactions* (6.1), *Clinical Studies* (14.3)]. A total of 26 pediatric patients (ages 2 years to < 17 years) were evaluated; 12 children (aged 2 years to < 12 years) and 14 adolescents (aged 12 years to < 17 years). See *Dosage and Administration* (2.3) for dosing recommendations for pediatric patients 2 years and older. The safety and efficacy of eltrombopag in combination with h-ATG and cyclosporine in pediatric patients younger than 2 years for the first-line treatment of severe aplastic anemia have not yet been established. In

patients 2 years to 16 years of age, 69% of patients experienced serious adverse events compared to 42% in patients 17 years and older. Among the 12 patients who were 2 years to 11 years of age in the eltrombopag D1 to M6 cohort and reached the 6 month assessment or withdrew earlier, the complete response rate at Month 6 was 8% versus 46% in patients age 12 years to 16 years and 50% in patients 17 years of age and older.

8.5 Geriatric Use

Of the 106 patients in two randomized clinical trials of eltrombopag 50 mg in persistent or chronic ITP, 22% were 65 years of age and over, while 9% were 75 years of age and over. Of the 1,439 patients in two randomized clinical trials of eltrombopag in patients with chronic hepatitis C and thrombocytopenia, 7% were 65 years of age and over, while < 1% were 75 years of age and over. Of the 196 patients who received eltrombopag for the treatment of severe aplastic anemia, 18% were 65 years of age and over, while 3% were 75 years of age and over. No overall differences in safety or effectiveness were observed between these patients and younger patients.

8.6 Hepatic Impairment

Patients With Persistent or Chronic ITP and Severe Aplastic Anemia

Reduce the initial dose of eltrombopag in patients with persistent or chronic ITP (adult and pediatric patients 6 years and older only) or refractory severe aplastic anemia who also have hepatic impairment (Child-Pugh class A, B, C) [see *Dosage and Administration* (2.1, 2.3), *Warnings and Precautions* (5.2), *Clinical Pharmacology* (12.3)].

In a clinical trial in patients with severe aplastic anemia who had not received prior definitive immunosuppressive therapy, patients with baseline ALT or AST > 5 x ULN were ineligible to participate. If a patient with hepatic impairment (Child-Pugh class A, B, C) initiates therapy with eltrombopag for the first-line treatment of severe aplastic anemia, reduce the initial dose [see *Dosage and Administration* (2.3), *Warnings and Precautions* (5.2), *Clinical Pharmacology* (12.3)].

Patients With Chronic Hepatitis C

No dosage adjustment is recommended in patients with chronic hepatitis C and hepatic impairment [see *Clinical Pharmacology* (12.3)].

8.7 Ethnicity

Reduce the initial dose of eltrombopag for patients of East-/Southeast-Asian ancestry with ITP (adult and pediatric patients 6 years and older only) or severe aplastic anemia [see *Dosage and Administration* (2.1, 2.3), *Clinical Pharmacology* (12.3)]. No reduction in the initial dose of eltrombopag is recommended in patients of East-/Southeast-Asian ancestry with chronic hepatitis C [see *Clinical Pharmacology* (12.3)].

10 OVERDOSAGE

In the event of overdose, platelet counts may increase excessively and result in thrombotic/thromboembolic complications.

In one report, a subject who ingested 5,000 mg of eltrombopag had a platelet count

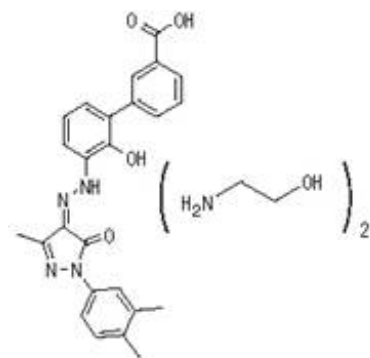
increase to a maximum of $929 \times 10^9/L$ at 13 days following the ingestion. The patient also experienced rash, bradycardia, ALT/AST elevations and fatigue. The patient was treated with gastric lavage, oral lactulose, intravenous fluids, omeprazole, atropine, furosemide, calcium, dexamethasone and plasmapheresis; however, the abnormal platelet count and liver test abnormalities persisted for 3 weeks. After 2 months' follow-up, all events had resolved without sequelae.

In case of an overdose, consider oral administration of a metal cation-containing preparation, such as calcium, aluminum or magnesium preparations to chelate eltrombopag and thus limit absorption. Closely monitor platelet counts. Reinitiate treatment with eltrombopag in accordance with dosing and administration recommendations [see *Dosage and Administration* (2.1, 2.2)]. Consider contacting the Poison Help line (1800-222-1222) or a medical toxicologist for additional overdose management recommendations.

11 DESCRIPTION

Eltrombopag tablets contain eltrombopag olamine, a small molecule thrombopoietin (TPO) receptor agonist for oral administration.

Eltrombopag olamine is a biphenyl hydrazone. The chemical name for eltrombopag olamine is 3'-{(2Z)-2-[1-(3,4-dimethylphenyl)-3-methyl-5-oxo-1,5-dihydro-4H-pyrazol-4-ylidene]hydrazino}-2'-hydroxy-3-biphenylcarboxylic acid-2-aminoethanol (1:2). It has the molecular formula $C_{25}H_{22}N_4O_4 \cdot 2(C_2H_7NO)$. The molecular weight is 564.64 g/mol for eltrombopag olamine and 442.48 g/mol for eltrombopag free acid. Eltrombopag olamine has the following structural formula:



Eltrombopag olamine is practically insoluble in aqueous buffer across a pH range of 1 to 7.5, very slightly soluble in water, slightly soluble in methanol and ethanol.

Each film-coated tablets contain eltrombopag olamine equivalent to 12.5 mg, 25 mg, 50 mg or 75 mg of eltrombopag free acid and contains the following inactive ingredients: hypromellose, microcrystalline cellulose, polyethylene glycol, povidone (k-30), sodium starch glycolate, sodium stearyl fumarate, titanium dioxide and xylitol.

Additionally, each 25 mg tablet contains iron oxide red and iron oxide yellow, each 50 mg tablet contains FD&C blue #2 Aluminum Lake and each 75 mg tablet contains ferrousferic oxide and iron oxide red.

12 CLINICAL PHARMACOLOGY

12.1 Mechanism of Action

Eltrombopag is a TPO-receptor agonist that interacts with the transmembrane domain of the human TPO-receptor (also known as cMpl) and initiates signaling cascades that induce proliferation and differentiation of megakaryocytes leading to increased platelet production.

12.2 Pharmacodynamics

In clinical trials, treatment with eltrombopag resulted in dose-dependent increases in platelet counts following repeated (daily) dosing. The increase in platelet counts reached a maximum approximately two weeks after the initiation of dosing and returned to baseline within approximately two weeks after the last dose of eltrombopag.

Cardiac Electrophysiology

At doses up to 150 mg (the maximum recommended dose) daily for 5 days, eltrombopag did not prolong the QT/QTc interval to any relevant extent.

12.3 Pharmacokinetics

Eltrombopag demonstrated a dose-proportional increase in exposure between doses of 50 mg/day to 150 mg/day in healthy adult subjects. Eltrombopag AUC was approximately 1.7 fold higher in patients with persistent or chronic ITP and approximately 2.8 fold higher in patients with HCV compared to healthy subjects. Steady-state was achieved after approximately 1 week of once daily treatment, with geometric mean accumulation ratio of 1.56 (90% confidence interval 1.20, 1.63) at 75 mg/day. Eltrombopag AUC was approximately 3.2-fold higher in patients with definitive immunosuppressive therapy-naïve severe aplastic anemia compared to healthy subjects suggesting higher relative exposure compared to healthy subjects or patients with ITP and similar exposure compared to patients with chronic hepatitis C. Eltrombopag for oral suspension delivered 22% higher plasma AUC_{0-INF} than the tablet formulation.

Absorption

Eltrombopag is absorbed with a peak concentration occurring 2 hours to 6 hours after oral administration. Oral absorption of drug-related material following administration of a single 75 mg solution dose was estimated to be at least 52%.

Effect of Food

A standard high-fat breakfast (876 calories, 52 g fat, 71 g carbohydrate, 34 g protein and 427 mg calcium) significantly decreased plasma eltrombopag AUC_{0-INF} by approximately 59% and C_{max} by 65% and delayed T_{max} by 1 hour. The decrease in exposure is primarily due to the high calcium content.

A meal low in calcium (≤ 50 mg calcium) did not significantly impact plasma eltrombopag exposure, regardless of calorie and fat content.

The effect of administration of a single 25 mg dose of eltrombopag for oral suspension with a high-calcium, moderate-fat, moderate calorie meal on AUC_{0-INF} and C_{max} in healthy adult subjects is presented in Table 14.

Table 14 Effect on Plasma Eltrombopag Pharmacokinetic Parameters After Administration of a Single 25 mg Dose of Eltrombopag for Oral Suspension With a High Calcium Meal^a in Healthy Adult Subjects

Timing of eltrombopag for oral suspension dose	Mean (90% CI) reduction in plasma eltrombopag AUC_{0-∞}	Mean (90% CI) reduction in plasma eltrombopag C_{max}
With a high-calcium, moderate-fat, moderate-calorie meal	75% (71%, 88%)	79% (76%, 82%)
2 hours after the high-calcium, moderate-fat, moderate-calorie meal	47% (40%, 53%)	48% (40%, 54%)
2 hours before the high-calcium, moderate-fat, moderate-calorie meal	20% (9%, 29%)	14% (2%, 25%)

^a 372 calories, 9 g fat and 448 mg calcium.

Distribution

The concentration of eltrombopag in blood cells is approximately 50% to 79% of plasma concentrations based on a radiolabel study. *In vitro* studies suggest that eltrombopag is highly bound to human plasma proteins (greater than 99%). Eltrombopag is a substrate of BCRP, but is not a substrate for P-glycoprotein (P-gp) or OATP1B1.

Elimination

The plasma elimination half-life of eltrombopag is approximately 21 hours to 32 hours in healthy subjects and 26 hours to 35 hours in patients with ITP.

Metabolism

Absorbed eltrombopag is extensively metabolized, predominantly through pathways, including cleavage, oxidation and conjugation with glucuronic acid, glutathione or cysteine. *In vitro* studies suggest that CYP1A2 and CYP2C8 are responsible for the oxidative metabolism of eltrombopag. UGT1A1 and UGT1A3 are responsible for the glucuronidation of eltrombopag.

Excretion

The predominant route of eltrombopag excretion is via feces (59%) and 31% of the dose is found in the urine. Unchanged eltrombopag in feces accounts for approximately 20% of the dose; unchanged eltrombopag is not detectable in urine.

Specific Populations

Ethnicity

Eltrombopag concentrations in East-/Southeast-Asian ancestry patients with ITP or chronic hepatitis C, were 50% to 55% higher compared with non-Asian subjects [see *Dosage and Administration* (2.1, 2.3)].

Eltrombopag exposure in healthy African-American subjects was approximately 40% higher than that observed in Caucasian subjects in one clinical pharmacology trial and similar in three other clinical pharmacology trials. The effect of African-American ethnicity on exposure and related safety and efficacy of eltrombopag has not been established.

Hepatic Impairment

Following a single dose of eltrombopag (50 mg), plasma eltrombopag AUC_{0-12h} was 41% higher in patients with mild hepatic impairment (Child-Pugh class A) compared with subjects with normal hepatic function. Plasma eltrombopag AUC_{0-12h} was approximately 2 fold higher in patients with moderate (Child-Pugh class B) and severe hepatic impairment (Child-Pugh class C) compared with subjects with normal hepatic function. The half-life of eltrombopag was prolonged 2 fold in these patients. This clinical trial did not evaluate protein-binding effects.

Chronic Liver Disease

Following repeat doses of eltrombopag in patients with thrombocytopenia and with chronic liver disease, mild hepatic impairment resulted in an 87% to 110% higher plasma eltrombopag $AUC_{(0-\tau)}$ and moderate hepatic impairment resulted in approximately 141% to 240% higher plasma eltrombopag $AUC_{(0-\tau)}$ values compared with patients with normal hepatic function. The half-life of eltrombopag was prolonged 3 fold in patients with mild hepatic impairment and 4 fold in patients with moderate hepatic impairment. This clinical trial did not evaluate protein-binding effects.

Chronic Hepatitis C

Patients with chronic hepatitis C treated with eltrombopag had higher plasma $AUC_{(0-\tau)}$ values as compared with healthy subjects and $AUC_{(0-\tau)}$ increased with increasing Child-Pugh score. Patients with chronic hepatitis C and mild hepatic impairment had approximately 100% to 144% higher plasma $AUC_{(0-\tau)}$ compared with healthy subjects. This clinical trial did not evaluate protein-binding effects.

Renal Impairment

Following a single dose of eltrombopag (50 mg), the average total plasma eltrombopag AUC_{0-12h} was 32% to 36% lower in subjects with mild (estimated creatinine clearance (CLCr) by Cockcroft-Gault equation: 50 mL/min to 80 mL/min), to moderate (CLCr of 30 mL/min to 49 mL/min) renal impairment and 60% lower in subjects with severe (CLCr less than 30 mL/min) renal impairment compared with healthy subjects. The effect of renal impairment on unbound (active) eltrombopag exposure has not been assessed.

Pediatric Patients

The pharmacokinetics of eltrombopag have been evaluated in 168 pediatric patients 1 year and older with ITP dosed once daily in two trials. Plasma eltrombopag apparent clearance following oral administration (CL/F) increased with increasing body weight. East-/Southeast-Asian pediatric patients with ITP had approximately 43% higher plasma eltrombopag $AUC_{(0-\tau)}$ values as compared with non-Asian patients.

Plasma eltrombopag $AUC_{(0-\tau)}$ and C_{max} in pediatric patients aged 12 years to 17 years was similar to that observed in adults. The pharmacokinetic parameters of eltrombopag in pediatric patients with ITP are shown in Table 15.

Table 15 Geometric Mean (95% CI) Steady-state Plasma Eltrombopag

Pharmacokinetic Parameters^a in Patients With ITP (Normalized to a Once-daily 50 mg Dose)

Age	C _{max} ^b (mcg/mL)	AUC _(0-τ) ^b (mcg·hr/mL)
Adults (n=108)	7.03 (6.44, 7.68)	101 (91.4, 113)
12 years to 17 years (n=62)	6.80 (6.17, 7.50)	103 (91.1, 116)
6 years to 11 years (n=68)	10.3 (9.42, 11.2)	153 (137, 170)
1 year to 5 years (n=38)	11.6 (10.4, 12.9)	162 (139, 187)

^a PK parameters presented as geometric mean (95% CI).

^b Based on population PK post-hoc estimates.

Drug Interaction Studies

Clinical Studies

Effect of Drugs on Eltrombopag

Effect of Polyvalent Cation-containing Antacids on Eltrombopag

The coadministration of a single dose of eltrombopag (75 mg) with a polyvalent cation-containing antacid (1,524 mg aluminum hydroxide, 1,425 mg magnesium carbonate and sodium alginate) decreased plasma eltrombopag AUC_{0-INF} and C_{max} by approximately 70%. The contribution of sodium alginate to this interaction is not known.

Effect of HIV Protease Inhibitors on Eltrombopag:

The coadministration of repeat-dose lopinavir 400 mg/ritonavir 100 mg (twice daily) with a single dose of eltrombopag (100 mg) decreased plasma eltrombopag AUC_{0-INF} by 17%.

Effect of HCV Protease Inhibitors on Eltrombopag:

The coadministration of repeat-dose telaprevir (750 mg every 8 hours) or boceprevir (800 mg every 8 hours) with a single dose of eltrombopag (200 mg) to healthy adult subjects in a clinical trial did not alter plasma eltrombopag AUC_{0-INF} or C_{max} to a significant extent.

Effect of Cyclosporine on Eltrombopag:

The coadministration of a single dose of eltrombopag (50 mg) with a single dose of an OATP and BCRP inhibitor cyclosporine (200 mg or 600 mg) decreased plasma eltrombopag AUC_{0-INF} by 18% to 24% and C_{max} by 25% to 39%.

Effect of Pegylated Interferon alfa-2a + Ribavirin and Pegylated Interferon alfa-2b + Ribavirin on Eltrombopag:

The presence of pegylated interferon alfa + ribavirin therapy did not significantly affect the clearance of eltrombopag.

Effect of Eltrombopag on Other Drugs

Effect of Eltrombopag on Cytochrome P450 Enzymes Substrates:

The coadministration of multiple doses of eltrombopag (75 mg once daily for 7 days) did

not result in the inhibition or induction of the metabolism of a combination of probe substrates for CYP1A2 (caffeine), CYP2C19 (omeprazole), CYP2C9 (flurbiprofen) or CYP3A4 (midazolam) in humans.

Effect of Eltrombopag on Rosuvastatin:

The coadministration of multiple doses of eltrombopag (75 mg once daily for 5 days) with a single dose of rosuvastatin (OATP1B1 and BCRP substrate; 10 mg) increased plasma rosuvastatin AUC_{0-INF} by 55% and C_{max} by 103%.

Effect of Eltrombopag on HCV Protease Inhibitors:

The coadministration of repeat-dose telaprevir (750 mg every 8 hours) or boceprevir (800 mg every 8 hours) with a single dose of eltrombopag (200 mg) to healthy adult subjects in a clinical trial did not alter plasma telaprevir or boceprevir AUC_{0-INF} or C_{max} to a significant extent.

In vitro Studies

Eltrombopag Effect on Metabolic Enzymes

Eltrombopag has demonstrated the potential to inhibit CYP2C8, CYP2C9, UGT1A1, UGT1A3, UGT1A4, UGT1A6, UGT1A9, UGT2B7 and UGT2B15.

Eltrombopag Effect on Transporters

Eltrombopag has demonstrated the potential to inhibit OATP1B1 and BCRP.

13 NONCLINICAL TOXICOLOGY

13.1 Carcinogenesis, Mutagenesis, Impairment of Fertility

Eltrombopag does not stimulate platelet production in rats, mice or dogs because of unique TPO receptor specificity. Data from these animals do not fully model effects in humans.

Eltrombopag was not carcinogenic in mice at doses up to 75 mg/kg/day or in rats at doses up to 40 mg/kg/day (exposures up to 4 times the human clinical exposure based on AUC in patients with ITP at 75 mg/day and 2 times the human clinical exposure based on AUC in patients with chronic hepatitis C at 100 mg/day).

Eltrombopag was not mutagenic or clastogenic in a bacterial mutation assay or in two *in vivo* assays in rats (micronucleus and unscheduled DNA synthesis, 10 times the human clinical exposure based on C_{max} in patients with ITP at 75 mg/day and 7 times the human clinical exposure based on C_{max} in patients with chronic hepatitis C at 100 mg/day). In the *in vitro* mouse lymphoma assay, eltrombopag was marginally positive (less than 3 fold increase in mutation frequency).

Eltrombopag did not affect female fertility in rats at doses up to 20 mg/kg/day (2 times the human clinical exposure based on AUC in patients with ITP at 75 mg/day and similar to the human clinical exposure based on AUC in patients with chronic hepatitis C at 100 mg/day). Eltrombopag did not affect male fertility in rats at doses up to 40 mg/kg/day, the highest dose tested (3 times the human clinical exposure based on AUC in patients with ITP at 75 mg/day and 2 times the human clinical exposure based on AUC in patients with chronic hepatitis C at 100 mg/day).

13.2 Animal Pharmacology and/or Toxicology

Treatment-related cataracts were detected in rodents in a dose- and time-dependent manner. At greater than or equal to 6 times the human clinical exposure based on AUC in patients with ITP at 75 mg/day and 3 times the human clinical exposure based on AUC in patients with chronic hepatitis C at 100 mg/day, cataracts were observed in mice after 6 weeks and in rats after 28 weeks of dosing. At greater than or equal to 4 times the human clinical exposure based on AUC in patients with ITP at 75 mg/day and 2 times the human clinical exposure based on AUC in patients with chronic hepatitis C at 100 mg/day, cataracts were observed in mice after 13 weeks and in rats after 39 weeks of dosing [see *Warnings and Precautions* (5.5)].

Renal tubular toxicity was observed in studies up to 14 days in duration in mice and rats at exposures that were generally associated with morbidity and mortality. Tubular toxicity was also observed in a 2 year oral carcinogenicity study in mice at doses of 25 mg/kg/day, 75 mg/kg/day and 150 mg/kg/day. The exposure at the lowest dose was 1.2 times the human clinical exposure based on AUC in patients with ITP at 75 mg/day and 0.6 times the human clinical exposure based on AUC in patients with chronic hepatitis C at 100 mg/day. No similar effects were observed in mice after 13 weeks at exposures greater than those associated with renal changes in the 2 year study, suggesting that this effect is both dose- and time-dependent.

14 CLINICAL STUDIES

14.1 Persistent or Chronic ITP

Adults

The efficacy and safety of eltrombopag in adult patients with persistent or chronic ITP were evaluated in three randomized, double-blind, placebo-controlled trials and in an open-label extension trial.

In Study TRA100773B and Study TRA100773A (referred to as Study 773B and Study 773A, respectively [NCT00102739]), patients who had completed at least one prior ITP therapy and who had a platelet count less than $30 \times 10^9/L$ were randomized to receive either eltrombopag or placebo daily for up to 6 weeks, followed by 6 weeks off therapy. During the trials, eltrombopag or placebo was discontinued if the platelet count exceeded $200 \times 10^9/L$.

The median age of the patients was 50 years and 60% were female. Approximately 70% of the patients had received at least 2 prior ITP therapies (predominantly corticosteroids, immunoglobulins, rituximab, cytotoxic therapies, danazol and azathioprine) and 40% of the patients had undergone splenectomy. The median baseline platelet counts (approximately $18 \times 10^9/L$) were similar among all treatment groups.

Study 773B randomized 114 patients (2:1) to eltrombopag 50 mg or placebo. Of 60 patients with documented time since diagnosis, approximately 17% met the definition of persistent ITP with time since diagnosis of 3 months to 12 months. Study 773A randomized 117 patients (1:1:1:1) among placebo or 1 of 3 dose regimens of eltrombopag, 30 mg, 50 mg or 75 mg each administered daily. Of 51 patients with documented time since diagnosis, approximately 14% met the definition of persistent ITP.

The efficacy of eltrombopag in this trial was evaluated by response rate, defined as a shift from a baseline platelet count of less than $30 \times 10^9/L$ to greater than or equal to $50 \times 10^9/L$ at any time during the treatment period (Table 16).

Table 16 Studies 773B and 773A: Platelet Count Response ($\geq 50 \times 10^9/L$) Rates in Adults With Persistent or Chronic Immune Thrombocytopenia

Study	Eltrombopag 50 mg Daily	Placebo
773B	43/73 (59%) ^a	6/37 (16%)
773A	19/27 (70%) ^a	3/27 (11%)

^a p -value < 0.001 for eltrombopag versus placebo.

The platelet count response to eltrombopag was similar among patients who had or had not undergone splenectomy. In general, increases in platelet counts were detected 1 week following initiation of eltrombopag and the maximum response was observed after 2 weeks of therapy. In the placebo and 50 mg dose groups of eltrombopag, the trial drug was discontinued due to an increase in platelet counts to greater than $200 \times 10^9/L$ in 3% and 27% of the patients, respectively. The median duration of treatment with the 50 mg dose of eltrombopag was 43 days in Study 773B and 42 days in Study 773A.

Of 7 patients who underwent hemostatic challenges, additional ITP medications were required in 3 of 3 placebo group patients and 0 of 4 patients treated with eltrombopag. Surgical procedures accounted for most of the hemostatic challenges. Hemorrhage requiring transfusion occurred in one placebo group patient and no patients treated with eltrombopag.

In the RAISE study (NCT00370331), 197 patients were randomized (2:1) to receive either eltrombopag 50 mg once daily ($n=135$) or placebo ($n=62$) for 6 months, during which time the dose of eltrombopag could be adjusted based on individual platelet counts. Of 145 patients with documented time since diagnosis, 19% met the definition of persistent ITP. Patients were allowed to taper or discontinue concomitant ITP medications after being treated with eltrombopag for 6 weeks. Patients were permitted to receive rescue treatments at any time during the trial as clinically indicated.

The median ages of the patients treated with eltrombopag and placebo were 47 years and 52.5 years, respectively. Approximately half of the patients treated with eltrombopag and placebo (47% and 50%, respectively) were receiving concomitant ITP medication (predominantly corticosteroids) at randomization and had baseline platelet counts less than or equal to $15 \times 10^9/L$ (50% and 48%, respectively). A similar percentage of patients treated with eltrombopag and placebo (37% and 34%, respectively) had a prior splenectomy.

The efficacy of eltrombopag in this trial was evaluated by the odds of achieving a platelet count greater than or equal to $50 \times 10^9/L$ and less than or equal to $400 \times 10^9/L$ for patients receiving eltrombopag relative to placebo and was based on patient response profiles throughout the 6 month treatment period. In 134 patients who completed 26 weeks of treatment, a sustained platelet response (platelet count greater than or equal to $50 \times 10^9/L$ and less than or equal to $400 \times 10^9/L$ for 6 out of the last 8 weeks of the 26 week treatment period in the absence of rescue medication at any time) was

achieved by 60% of patients treated with eltrombopag, compared with 10% of patients treated with placebo (splenectomized patients: eltrombopag 51%, placebo 8%; non-splenectomized patients: eltrombopag 66%, placebo 11%). The proportion of responders in the group of patients treated with eltrombopag was between 37% and 56% compared with 7% and 19% in the placebo treatment group for all on-therapy visits. Patients treated with eltrombopag were significantly more likely to achieve a platelet count between $50 \times 10^9/\text{L}$ and $400 \times 10^9/\text{L}$ during the entire 6 month treatment period compared with those patients treated with placebo.

Outcomes of treatment are presented in Table 17 for all patients enrolled in the trial.

Table 17 RAISE: Outcomes of Treatment in Adults With Persistent or Chronic Immune Thrombocytopenia

Outcome	Eltrombopag n=135	Placebo n=62
Mean number of weeks with platelet counts $\geq 50 \times 10^9/\text{L}$	11.3	2.4
Requiring rescue therapy, n (%)	24 (18)	25 (40)

Among 94 patients receiving other ITP therapy at baseline, 37 (59%) of 63 patients treated with eltrombopag and 10 (32%) of 31 patients in the placebo group discontinued concomitant therapy at some time during the trial.

In the EXTEND study (NCT00351468), patients who completed any prior clinical trial with eltrombopag were enrolled in an open-label, single-arm trial in which attempts were made to decrease the dose or eliminate the need for any concomitant ITP medications. Eltrombopag was administered to 302 patients in EXTEND; 218 patients completed 1 year, 180 patients completed 2 years, 107 patients completed 3 years, 75 patients completed 4 years, 34 patients completed 5 years and 18 patients completed 6 years of therapy. The median baseline platelet count was $19 \times 10^9/\text{L}$ prior to administration of eltrombopag. Median platelet counts at 1 year, 2 years, 3 years, 4 years, 5 years, 6 years and 7 years on study were $85 \times 10^9/\text{L}$, $85 \times 10^9/\text{L}$, $105 \times 10^9/\text{L}$, $64 \times 10^9/\text{L}$, $75 \times 10^9/\text{L}$, $119 \times 10^9/\text{L}$ and $76 \times 10^9/\text{L}$, respectively.

Pediatric Patients

The efficacy and safety of eltrombopag in pediatric patients 1 year and older with persistent or chronic ITP were evaluated in two double-blind, placebo-controlled trials. The trials differed in time since ITP diagnosis: at least 6 months versus at least 12 months. During the trials, doses could be increased every 2 weeks to a maximum of 75 mg once daily. The dose of eltrombopag was reduced if the platelet count exceeded $200 \times 10^9/\text{L}$ and interrupted and reduced if it exceeded $400 \times 10^9/\text{L}$.

In the PETIT2 study (NCT01520909), patients refractory or relapsed to at least one prior ITP therapy with a platelet count less than $30 \times 10^9/\text{L}$ (n=92) were stratified by age and randomized (2:1) to eltrombopag (n=63) or placebo (n=29). The starting dose for patients aged 6 years to 17 years was 50 mg once daily for those at least 27 kg and 37.5 mg once daily for those less than 27 kg, administered as oral tablets. A reduced dose of 25 mg once daily was used for East-/Southeast-Asian patients aged 6 years to 17 years regardless of weight. The starting dose for patients aged 1 year to 5 years was 1.2 mg/kg once daily (0.8 mg/kg once daily for East-/Southeast-Asian patients)

administered as oral suspension.

The 13 week, randomized, double-blind period was followed by a 24 week, open-label period where patients from both arms were eligible to receive eltrombopag.

The median age of the patients was 9 years and 48% were female. Approximately 62% of patients had a baseline platelet count less than or equal to $15 \times 10^9/L$, a characteristic that was similar between treatment arms. The percentage of patients with at least 2 prior ITP therapies (predominantly corticosteroids and immunoglobulins) was 73% in the group treated with eltrombopag and 90% in the group treated with placebo. Four patients in the group treated with eltrombopag had undergone splenectomy.

The efficacy of eltrombopag in this trial was evaluated by the proportion of subjects on eltrombopag achieving platelet counts $\geq 50 \times 10^9/L$ (in the absence of rescue therapy) for at least 6 weeks out of 8 weeks between Weeks 5 to Weeks 12 of the randomized, double-blind period (Table 18).

Table 18 PETIT2: Platelet Count Response ($\geq 50 \times 10^9/L$ Without Rescue) for 6 out of 8 Weeks (between Weeks 5 to Weeks 12) Overall and by Age Cohort in Pediatric Patients 1 Year and Older With Chronic Immune Thrombocytopenia

Age cohort	Eltrombopag	Placebo
Overall	26/63 (41%) ^a	1/29 (3%)
12 years to 17 years	10/24 (42%)	1/10 (10%)
6 years to 11 years	11/25 (44%)	0/13 (0%)
1 year to 5 years	5/14 (36%)	0/6 (0%)

^a*p*-value = < 0.001 for eltrombopag versus placebo.

More pediatric patients treated with eltrombopag (75%) compared with placebo (21%) had at least one platelet count greater than or equal to $50 \times 10^9/L$ during the first 12 weeks of randomized treatment in absence of rescue therapy. Fewer pediatric patients treated with eltrombopag required rescue treatment during the randomized, double-blind period compared with placebo-treated patients (19% [12/63] versus 24% [7/29]). In the patients who achieved a platelet response ($\geq 50 \times 10^9/L$ without rescue) for 6 out of 8 weeks (between weeks 5 to weeks 12), 62% (16/26) had an initial response in the first 2 weeks after starting eltrombopag.

Patients were permitted to reduce or discontinue baseline ITP therapy only during the open-label phase of the trial. Among 15 patients receiving other ITP therapy at baseline, 53% (8/15) reduced (n=1) or discontinued (n=7) concomitant therapy, mainly corticosteroids, without needing rescue therapy.

In the PETIT study (NCT00908037), patients refractory or relapsed to at least one prior ITP therapy with a platelet count less than $30 \times 10^9/L$ (n=67) were stratified by age and randomized (2:1) to eltrombopag (n=45) or placebo (n=22). Approximately 15% of patients met the definition of persistent ITP. The starting dose for patients aged 12 years to 17 years was 37.5 mg once daily regardless of weight or race. The starting dose for patients aged 6 years to 11 years was 50 mg once daily for those greater than or equal to 27 kg and 25 mg once daily for those less than 27 kg, administered as oral

tablets. Reduced doses of 25 mg (for those greater than or equal to 27 kg) and 12.5 mg (for those less than 27 kg), each once daily, were used for East-/Southeast-Asian patients in this age range. The starting dose for patients aged 1 year to 5 years was 1.5 mg/kg once daily (0.8 mg/kg once daily for East-/Southeast-Asian patients) administered as oral suspension.

The 7 week, randomized, double-blind period was followed by an open-label period of up to 24 weeks where patients from both arms were eligible to receive eltrombopag.

The median age of the patients was 10 years and 60% were female. Approximately 51% of patients had a baseline platelet count less than or equal to $15 \times 10^9/L$. The percentage of patients with at least 2 prior ITP therapies (predominantly corticosteroids and immunoglobulins) was 84% in the group treated with eltrombopag and 86% in the group treated with placebo. Five patients in the group treated with eltrombopag had undergone splenectomy.

The efficacy of eltrombopag in this trial was evaluated by the proportion of patients achieving platelet counts greater than or equal to $50 \times 10^9/L$ (in absence of rescue therapy) at least once between Week 1 and Weeks 6 of the randomized, double-blind period (Table 19). Platelet response to eltrombopag was consistent across the age cohorts.

Table 19 PETIT: Platelet Count Response ($\geq 50 \times 10^9/L$ Without Rescue) Rates in Pediatric Patients 1 Year and Older With Persistent or Chronic Immune Thrombocytopenia

Age cohort	Eltrombopag	Placebo
Overall	28/45 (62%) ^a	7/22 (32%)
12 years to 17 years	10/16 (62%)	0/8 (0%)
6 years to 11 years	12/19 (63%)	3/9 (33%)
1 year to 5 years	6/10 (60%)	4/5 (80%)

^ap -value = 0.011 for eltrombopag versus placebo.

Fewer pediatric patients treated with eltrombopag required rescue treatment during the randomized, double-blind period compared with placebo-treated patients (13% [6/45] versus 50% [11/22]).

Patients were permitted to reduce or discontinue baseline ITP therapy only during the open-label phase of the trial. Among 13 patients receiving other ITP therapy at baseline, 46% (6/13) reduced (n=3) or discontinued (n=3) concomitant therapy, mainly corticosteroids, without needing rescue therapy.

14.2 Chronic Hepatitis C-Associated Thrombocytopenia

The efficacy and safety of eltrombopag for the treatment of thrombocytopenia in adult patients with chronic hepatitis C were evaluated in two randomized, double-blind, placebo-controlled trials. The ENABLE1 study (NCT00516321) utilized peginterferon alfa-2a (PEGASYS®) plus ribavirin for antiviral treatment and the ENABLE2 study (NCT00529568) utilized peginterferon alfa-2b (PEGINTRON®) plus ribavirin. In both trials, patients with a platelet count of less than $75 \times 10^9/L$ were enrolled and stratified by

platelet count, screening HCV RNA and HCV genotype. Patients were excluded if they had evidence of decompensated liver disease with Child-Pugh score greater than 6 (class B and C), history of ascites or hepatic encephalopathy. The median age of the patients in both trials was 52 years, 63% were male and 74% were Caucasian. Sixty-nine percent of patients had HCV genotypes 1, 4, 6, with the remainder genotypes 2 and 3. Approximately 30% of patients had been previously treated with interferon and ribavirin. The majority of patients (90%) had bridging fibrosis and cirrhosis, as indicated by noninvasive testing. A similar proportion (95%) of patients in both treatment groups had Child-Pugh class A (score 5 to 6) at baseline. A similar proportion of patients (2%) in both treatment groups had baseline international normalized ratio (INR) greater than 1.7. Median baseline platelet counts (approximately $60 \times 10^9/L$) were similar in both treatment groups. The trials consisted of 2 phases – a pre-antiviral treatment phase and an antiviral treatment phase. In the pre-antiviral treatment phase, patients received open-label eltrombopag to increase the platelet count to a threshold of greater than or equal to $90 \times 10^9/L$ for ENABLE1 and greater than or equal to $100 \times 10^9/L$ for ENABLE2. Eltrombopag was administered at an initial dose of 25 mg once daily for 2 weeks and increased in 25 mg increments over 2 week to 3 week periods to achieve the optimal platelet count to initiate antiviral therapy. The maximal time patients could receive open-label eltrombopag was 9 weeks. If threshold platelet counts were achieved, patients were randomized (2:1) to the same dose of eltrombopag at the end of the pre-treatment phase or to placebo. Eltrombopag was administered in combination with pegylated interferon and ribavirin per their respective prescribing information for up to 48 weeks.

The efficacy of eltrombopag for both trials was evaluated by sustained virologic response (SVR) defined as the percentage of patients with undetectable HCV-RNA at 24 weeks after completion of antiviral treatment. The median time to achieve the target platelet count greater than or equal to $90 \times 10^9/L$ was approximately 2 weeks. Ninety-five percent of patients were able to initiate antiviral therapy.

In both trials, a significantly greater proportion of patients treated with eltrombopag achieved SVR (see Table 20). The improvement in the proportion of patients who achieved SVR was consistent across subgroups based on baseline platelet count (less than $50 \times 10^9/L$ versus greater than or equal to $50 \times 10^9/L$). In patients with high baseline viral loads (greater than or equal to 800,000), the SVR rate was 18% (82/452) for eltrombopag versus 8% (20/239) for placebo.

Table 20 ENABLE1 and ENABLE2: Sustained Virologic Response (SVR) in Adults With Chronic Hepatitis C

Pre-antiviral treatment phase	ENABLE1 ^a		ENABLE2 ^b	
	n=715		n=805	
% Patients who achieved target platelet counts and initiated antiviral therapy ^c	95%		94%	
Antiviral treatment phase	Eltrombopag n=450 %	Placebo n=232 %	Eltrombopag n=506 %	Placebo n=253 %

Overall SVR^d	23	14	19	13
HCV genotype 2,3	35	24	34	25
HCV genotype 1,4,6	18	10	13	7

Abbreviation: HCV, hepatitis C virus.

^a Eltrombopag given in combination with peginterferon alfa-2a (180 mcg once weekly for 48 weeks for genotypes 1/4/6; 24 weeks for genotype 2 or 3) plus ribavirin (800 mg to 1,200 mg daily in 2 divided doses orally).

^b Eltrombopag given in combination with peginterferon alfa-2b (1.5 mcg/kg once weekly for 48 weeks for genotypes 1/4/6; 24 weeks for genotype 2 or 3) plus ribavirin (800 mg to 1,400 mg daily in 2 divided doses orally).

^c Target platelet count was $\geq 90 \times 10^9/L$ for ENABLE1 and $\geq 100 \times 10^9/L$ for ENABLE2.

^d p -value < 0.05 for eltrombopag versus placebo.

The majority of patients treated with eltrombopag (76%) maintained a platelet count greater than or equal to $50 \times 10^9/L$ compared with 19% for placebo. A greater proportion of patients on eltrombopag did not require any antiviral dose reduction as compared with placebo (45% versus 27%).

14.3 Severe Aplastic Anemia

First-Line Treatment of Severe Aplastic Anemia

Eltrombopag in combination with h-ATG and cyclosporine was investigated in a single-arm, single-center, open-label sequential cohort trial (Study ETB115AUS01T, referred to as Study US01T [NCT01623167]) in patients with severe aplastic anemia who had not received prior immunosuppressive therapy (IST) with any ATG, alemtuzumab or high dose cyclophosphamide. A total of 153 patients received eltrombopag in Study US01T in three sequential cohorts and an extension of the third cohort. The multiple cohorts received the same eltrombopag starting dose but differed by treatment start day and duration. The starting dose of eltrombopag for patients 12 years and older was 150 mg once daily (a reduced dose of 75 mg was administered for East-/Southeast-Asians), 75 mg once daily for pediatric patients aged 6 years to 11 years (a reduced dose of 37.5 mg was administered for East-/Southeast-Asians) and 2.5 mg/kg once daily for pediatric patients aged 2 years to 5 years (a reduced dose of 1.25 mg/kg was administered for East-/Southeast-Asians).

- Cohort 1 (n=30): Eltrombopag on Day 14 to Month 6 (D14 to M6) plus h-ATG and cyclosporine
- Cohort 2 (n=31): Eltrombopag on Day 14 to Month 3 (D14 to M3) plus h-ATG and cyclosporine
- Cohort 3 + Extension cohort [Eltrombopag D1 to M6 cohort] (n=92): Eltrombopag on Day 1 to Month 6 (D1 to M6) plus h-ATG and cyclosporine (with all patients eligible to receive low dose of cyclosporine (maintenance dose) if they achieved a hematologic response at 6 months)

Eltrombopag dose reductions were conducted for elevated platelet counts and hepatic impairment. Table 21 includes the dosages of h-ATG and cyclosporine administered in combination with eltrombopag in Study US01T.

Data from the Cohort 3 + Extension cohort support the efficacy of eltrombopag for the first-line treatment of patients with severe aplastic anemia (Table 22). The results presented in this section represent the findings from the Cohort 3 and Extension cohort

(n=92).

Table 21 Dosages of Immunosuppressive Therapy Administered With Eltrombopag in Study US01T

Agent	Dose Administered in the Pivotal Trial
Horse antithymocyte globulin (h-ATG)	40 mg/kg/day, based on actual body weight, administered intravenously on Day 1 to Days 4 of the 6 month treatment period
Cyclosporine ^a (therapeutic dose for 6 months, from Day 1 to Month 6, adjusted to obtain a target therapeutic trough level between 200 mcg/L and 400 mcg/L)	<i>Patients 12 years and older (total daily dose of 6 mg/kg/day)</i> 3 mg/kg, based on actual body weight, orally every 12 hours for 6 months, starting on Day 1 <i>Patients > 20 years of age with a body mass index > 35 or patients 12 years to 20 years of age with a body mass index > 95th percentile:</i> 3 mg/kg, based on adjusted body weight ^b , orally every 12 hours for 6 months, starting on Day 1 <i>Patients 2 years to 11 years of age (total daily dose of 12 mg/kg/day)</i> 6 mg/kg, based on actual body weight, orally every 12 hours for 6 months, starting on Day 1 <i>Patients 2 years to 11 years of age with a body mass index > 95th percentile:</i> 6 mg/kg, based on adjusted body weight ^b , orally every 12 hours for 6 months, starting on Day 1
Cyclosporine (maintenance dose, from Month 6 to Month 24)	<i>For patients who achieve a hematologic response at 6 months</i> 2 mg/kg/day administered orally at a fixed dose for an additional 18 months

^a Dose of cyclosporine was adjusted to achieve the above recommended target trough levels; refer to the appropriate cyclosporine prescribing information.

^b Calculated as the midpoint between the ideal body weight and actual body weight.

In the eltrombopag D1 to M6 cohort, the median age was 28 years (range, 5 years to 82 years) with 16% and 28% of patients ≥ 65 years of age and < 17 years of age, respectively. Forty-six percent of patients were male and the majority of patients were White (62%). Patients weighing 12 kg or less or patients with ALT or AST $> 5\times$ upper limit of normal were excluded from the trial.

The efficacy of eltrombopag in combination with h-ATG and cyclosporine was established on the basis of complete hematological response at 6 months. A complete response was defined as hematological parameters meeting all 3 of the following values on 2 consecutive serial blood count measurements at least one week apart: absolute neutrophil count (ANC) > 1,000/mcL, platelet count > 100 x 10⁹/L and hemoglobin > 10 g/dL. A partial response was defined as blood counts no longer meeting the standard criteria for severe pancytopenia in severe aplastic anemia equivalent to 2 of the following values on 2 consecutive serial blood count measurements at least one week apart: ANC > 500/mcL, platelet count > 20 x 10⁹/L or reticulocyte count > 60,000/mcL. Overall response rate is defined as the number of partial responses plus complete responses.

Table 22 Study US01T: Hematologic Response in First-Line Treatment of Patients With Severe Aplastic Anemia

	Eltrombopag D1 to M6 + h-ATG + cyclosporine n=92
Month 6, n^a	87
Overall response, n (%) [95% CI]	69 (79) [69, 87]
Complete response, n (%) [95% CI]	38 (44) [33, 55]
Median duration of overall response, n^b	70
Months (95% CI)	24.3 (21.4, NE)
Median duration of complete response, n^b	46
Months (95% CI)	24.3 (23, NE)

Abbreviation: NE, not estimable.

^a The number of patients who reached the 6 month assessment or withdrew earlier is the denominator for percentage calculation.

^b Number of responders at any time.

The overall and complete hematological response rates at Year 1 (n=78) are 56.4% and 38.5% and at Year 2 (n=62) are 38.7% and 30.6%, respectively.

Pediatric Patients

Thirty-four patients 2 years to 16 years of age were enrolled in Study US01T. In the D1 to M6 cohort, 7 and 17 out of 25 pediatric patients achieved a complete and overall response, respectively, at 6 months.

Refractory Severe Aplastic Anemia

Eltrombopag was studied in a single-arm, single-center, open-label trial (Study ETB115AUS28T, referred to as Study US28T [NCT00922883]) in 43 patients with severe aplastic anemia who had an insufficient response to at least one prior immunosuppressive therapy and who had a platelet count less than or equal to 30 x 10⁹/L. Eltrombopag was administered at an initial dose of 50 mg once daily for 2 weeks and increased over 2 week periods up to a maximum dose of 150 mg once daily. The efficacy of eltrombopag in the study was evaluated by the hematologic response assessed after 12 weeks of treatment. Hematologic response was defined as meeting 1

or more of the following criteria: 1) platelet count increases to $20 \times 10^9/L$ above baseline or stable platelet counts with transfusion independence for a minimum of 8 weeks; 2) hemoglobin increase by greater than 1.5 g/dL or a reduction in greater than or equal to 4 units of red blood cell (RBC) transfusions for 8 consecutive weeks; 3) ANC increase of 100% or an ANC increase greater than $0.5 \times 10^9/L$. Eltrombopag was discontinued after 16 weeks if no hematologic response was observed. Patients who responded continued therapy in an extension phase of the trial.

The treated population had median age of 45 years (range, 17 years to 77 years) and 56% were male. At baseline, the median platelet count was $20 \times 10^9/L$, hemoglobin was 8.4 g/dL, ANC was $0.58 \times 10^9/L$ and absolute reticulocyte count was $24.3 \times 10^9/L$. Eighty-six percent of patients were red blood cell (RBC) transfusion dependent and 91% were platelet transfusion dependent. The majority of patients (84%) received at least 2 prior immunosuppressive therapies. Three patients had cytogenetic abnormalities at baseline.

Table 23 presents the efficacy results.

Table 23 Study US28T: Hematologic Response in Patients With Refractory Severe Aplastic Anemia

Outcome	Eltrombopag n=43
Response rate ^a , n (%)	17 (40)
95% CI (%)	(25, 56)
Median of duration of response in months (95% CI)	NR ^b (3, NR ^b)

^a Includes single- and multi-lineage.

^b NR = not reached due to few events (relapsed).

In the 17 responders, the platelet transfusion-free period ranged from 8 days to 1,096 days with a median of 200 days and the RBC transfusion-free period ranged from 15 days to 1,082 days with a median of 208 days.

In the extension phase, 8 patients achieved a multi-lineage response; 4 of these patients subsequently tapered off treatment with eltrombopag and maintained the response (median follow up: 8.1 months, range, 7.2 months to 10.6 months).

16 HOW SUPPLIED/STORAGE AND HANDLING

16.1 Tablets

Eltrombopag tablets, 12.5 mg are white to light blue, round, biconvex, film-coated tablets debossed with "I" on one side and plain on the other and are supplied as follows:

NDC 70710-1395-3 in bottle of 30 tablets with child-resistant closure

Eltrombopag tablets, 25 mg are light yellow, round, biconvex, film-coated tablets debossed with "I7" on one side and plain on the other and are supplied as follows:

NDC 70710-1396-3 in bottle of 30 tablets with child-resistant closure

Eltrombopag tablets, 50 mg are light blue, round, biconvex, film-coated tablets debossed with "112" on one side and plain on the other and are supplied as follows:

NDC 70710-1397-7 in bottle of 14 tablets with child-resistant closure

NDC 70710-1397-3 in bottle of 30 tablets with child-resistant closure

Eltrombopag tablets, 75 mg are light purple, round, biconvex, film-coated tablets debossed with "117" on one side and plain on the other and are supplied as follows:

NDC 70710-1398-3 in bottle of 30 tablets with child-resistant closure

Store at 20°C to 25°C (68°F to 77°F); excursions permitted between 15°C to 30°C (59°F to 86°F) [see USP Controlled Room Temperature].

Dispense in original bottle.

17 PATIENT COUNSELING INFORMATION

Advise the patient or caregiver to read the FDA-approved patient labeling (Medication Guide).

Prior to treatment, patients should fully understand and be informed of the following risks and considerations for eltrombopag:

Risks

Hepatotoxicity

- Therapy with eltrombopag may be associated with hepatobiliary laboratory abnormalities [see *Warnings and Precautions (5.2)*].
- Advise patients with chronic hepatitis C and cirrhosis that they may be at risk for hepatic decompensation when receiving eltrombopag with alfa interferon therapy [see *Warnings and Precautions (5.1)*].
- Advise patients that they should report any of the following signs and symptoms of liver problems to their healthcare provider right away [see *Warnings and Precautions (5.2)*].
 - yellowing of the skin or the whites of the eyes (jaundice)
 - unusual darkening of the urine
 - unusual tiredness
 - right upper stomach area pain
 - confusion
 - swelling of the stomach area (abdomen)

Risk of Bleeding Upon Eltrombopag Discontinuation

- Advise patients that thrombocytopenia and risk of bleeding may reoccur upon discontinuing eltrombopag, particularly if eltrombopag is discontinued while the patient is on anticoagulants or antiplatelet agents. Advise patients that during therapy with eltrombopag, they should continue to avoid situations or medications that may increase the risk for bleeding.

Thrombotic/Thromboembolic Complications

- Advise patients that too much eltrombopag may result in excessive platelet counts and a risk for thrombotic/thromboembolic complications [see *Warnings and*

Precautions (5.4)].

Cataracts

- Advise patients to have a baseline ocular examination prior to administration of eltrombopag and be monitored for signs and symptoms of cataracts during therapy [see *Warnings and Precautions (5.5)*].

Drug Interactions

- Advise patients to take eltrombopag at least 2 hours before or 4 hours after calcium-rich foods, mineral supplements and antacids which contain polyvalent cations, such as iron, calcium, aluminum, magnesium, selenium and zinc [see *Dosage and Administration (2.4), Drug Interactions (7.1)*].

Lactation

- Advise women not to breastfeed during treatment with eltrombopag [see *Use in Specific Populations (8.2)*].

Administration of Eltrombopag

- For patients with persistent or chronic ITP, therapy with eltrombopag is administered to achieve and maintain a platelet count greater than or equal to $50 \times 10^9/L$ as necessary to reduce the risk for bleeding [see *Indications and Usage (1.1)*].
- For patients with chronic hepatitis C, therapy with eltrombopag is administered to achieve and maintain a platelet count necessary to initiate and maintain antiviral therapy with pegylated interferon and ribavirin [see *Indications and Usage (1.2)*].
- Advise patients to take eltrombopag without a meal or with a meal low in calcium (≤ 50 mg) and at least 2 hours before or 4 hours after other medications (e.g., antacids) and calcium-rich foods [see *Dosage and Administration (2.4)*].

The brands listed are the registered trademarks of their respective owners.

Manufactured by:

Zydus Lifesciences Ltd.

Ahmedabad, India

Distributed by:

Zydus Pharmaceuticals (USA) Inc.

Pennington, NJ 08534

Rev.: 06/25

MEDICATION GUIDE	
Eltrombopag (el trom' boe pag) Tablets	
What is the most important information I should know about eltrombopag tablets?	
Eltrombopag tablets can cause serious side effects, including:	
Liver problems:	
<ul style="list-style-type: none">• If you have chronic hepatitis C virus and take eltrombopag tablets with interferon and ribavirin treatment, eltrombopag tablets may	

increase your risk of liver problems. If your healthcare provider tells you to stop your treatment with interferon and ribavirin, you will also need to stop taking eltrombopag tablets.

- Eltrombopag tablets may increase your risk of liver problems that may be severe and possibly life threatening. Your healthcare provider will do blood tests to check your liver function before you start taking eltrombopag tablets and during your treatment. Your healthcare provider may stop your treatment with eltrombopag tablets if you have changes in your liver function blood tests.

Tell your healthcare provider right away if you have any of these signs and symptoms of liver problems:

- yellowing of the skin or the whites of the eyes (jaundice)
- right upper stomach area (abdomen) pain
- unusual darkening of the urine
- confusion
- unusual tiredness
- swelling of the stomach area (abdomen)

See "What are the possible side effects of eltrombopag tablets?" for other side effects of eltrombopag tablets.

What are eltrombopag tablets?

Eltrombopag tablets are a prescription medicine used to treat adults and children 1 year of age and older with low blood platelet counts due to persistent or chronic immune thrombocytopenia (ITP), when other medicines to treat ITP or surgery to remove the spleen have not worked well enough.

Eltrombopag tablets are also used to treat people with:

- low blood platelet counts due to chronic hepatitis C virus (HCV) infection before and during treatment with interferon.
- severe aplastic anemia (SAA) in combination with other medicines to treat SAA, as the first treatment for adults and children 2 years of age and older.
- severe aplastic anemia (SAA) when other medicines to treat SAA have not worked well enough.

Eltrombopag tablets are used to try to raise platelet counts in order to lower your risk for bleeding.

Eltrombopag tablets are not used to make platelet counts normal.

Eltrombopag tablets are not for use in people with a pre-cancerous condition called myelodysplastic syndrome (MDS) or in people with low platelet counts caused by certain other medical conditions or diseases.

It is not known if eltrombopag tablets are safe and effective when used with other antiviral medicines to treat chronic hepatitis C.

It is not known if eltrombopag tablets are safe and effective in children:

- younger than 1 year with ITP
- with low blood platelet counts due to chronic hepatitis C
- whose severe aplastic anemia (SAA) has not improved after

previous treatments.

- younger than 2 years when used in combination with other medicines to treat SAA as the first treatment for SAA.

Before you take eltrombopag tablets, tell your healthcare provider about all of your medical conditions, including if you:

- have liver problems
- have a precancerous condition called MDS or a blood cancer
- have or had a blood clot
- have a history of cataracts
- have had surgery to remove your spleen (splenectomy)
- have bleeding problems
- are of East-/Southeast-Asian ancestry. You may need a lower dose of eltrombopag tablets.
- are pregnant or plan to become pregnant. It is not known if eltrombopag tablets will harm an unborn baby. Tell your healthcare provider if you become pregnant or think you may be pregnant during treatment with eltrombopag tablets.
- Females who are able to become pregnant, should use effective birth control (contraception) during treatment with eltrombopag tablets and for at least 7 days after stopping treatment with eltrombopag tablets. Talk to your healthcare provider about birth control methods that may be right for you during this time.
- are breastfeeding or plan to breastfeed. You should not breastfeed during your treatment with eltrombopag tablets. Talk to your healthcare provider about the best way to feed your baby during this time.
- **Tell your healthcare provider about all the medicines you take**, including prescription and over-the-counter medicines, vitamins and herbal supplements. Eltrombopag tablets may affect the way certain medicines work. Certain other medicines may affect the way eltrombopag tablet works.

Especially tell your healthcare provider if you take:

- certain medicines used to treat high cholesterol, called "statins"
- a blood thinner medicine

Certain medicines may keep eltrombopag tablets from working correctly. Take eltrombopag tablets at least 2 hours before or 4 hours after taking these products:

- antacid medicine used to treat stomach ulcers or heartburn
- multivitamins or products that contain iron, calcium, aluminum, magnesium, selenium and zinc which may be found in mineral supplements

Ask your healthcare provider if you are not sure if your medicine is one that is listed above.

Know the medicines you take. Keep a list of them and show it to your

healthcare provider and pharmacist when you get a new medicine.

How should I take eltrombopag tablets?

- Take eltrombopag tablets exactly as your healthcare provider tells you to take it. Your healthcare provider will prescribe the dose of eltrombopag tablets that is right for you.
- If your healthcare provider prescribes eltrombopag tablets, take eltrombopag tablets whole. **Do not split, chew or crush eltrombopag tablets and do not mix with food or liquids.**
- **Do not** stop taking eltrombopag tablets without talking with your healthcare provider first. Do not change your dose or schedule for taking eltrombopag tablets unless your healthcare provider tells you to change it.
- Take eltrombopag tablets without a meal or with a meal low in calcium (50 mg or less) and at least 2 hours before or 4 hours after eating calcium-rich foods, such as dairy products, calcium-fortified juices and certain fruits and vegetables.
- If you miss a dose of eltrombopag tablets, wait and take your next scheduled dose. Do not take more than 1 dose of eltrombopag tablets in 1 day.
- If you take too much eltrombopag tablets, you may have a higher risk of serious side effects. Call your healthcare provider right away.
- Your healthcare provider will check your platelet count during your treatment with eltrombopag tablets and change your dose of eltrombopag tablets as needed.
- Tell your healthcare provider about any bruising or bleeding that happens while you take and after you stop taking eltrombopag tablets.
- If you have SAA, your healthcare provider may do tests to monitor your bone marrow during treatment with eltrombopag tablets.

What should I avoid while taking eltrombopag tablets?

Avoid situations and medicines that may increase your risk of bleeding.

What are the possible side effects of eltrombopag tablets?

Eltrombopag tablets may cause serious side effects, including:

- See "**What is the most important information I should know about eltrombopag tablets?**"
- **Increased risk of worsening of a precancerous blood condition called myelodysplastic syndrome (MDS) to acute myelogenous leukemia (AML).** Eltrombopag tablets are not for use in people with a precancerous condition called myelodysplastic syndromes (MDS). See "**What are eltrombopag tablets?**" If you have MDS and receive eltrombopag tablets, you have an increased risk that your MDS condition may worsen and become a blood cancer called AML. If your MDS worsens to become AML, you may have an increased risk of death from AML.

- **High platelet counts and higher risk for blood clots.** Your risk of getting a blood clot is increased if your platelet count is too high during treatment with eltrombopag tablets. Your risk of getting a blood clot may also be increased during treatment with eltrombopag tablets if you have normal or low platelet counts. You may have severe problems or die from some forms of blood clots, such as clots that travel to the lungs or that cause heart attacks or strokes. Your healthcare provider will check your blood platelet counts and change your dose or stop eltrombopag tablets if your platelet counts get too high. Tell your healthcare provider right away if you have signs and symptoms of a blood clot in the leg, such as swelling, pain or tenderness in your leg.

People with chronic liver disease may be at risk for a type of blood clot in the stomach area (abdomen). Tell your healthcare provider right away if you have stomach-area (abdomen) pain, nausea, vomiting or diarrhea as these may be symptoms of this type of blood clot.

- **New or worsened cataracts (a clouding of the lens in the eye).** New or worsened cataracts can happen in people taking eltrombopag tablets. Your healthcare provider will check your eyes before and during your treatment with eltrombopag tablets. Tell your healthcare provider about any changes in your eyesight while taking eltrombopag tablets.

The most common side effects of eltrombopag tablets in adults and children include:

- low red blood cell count (anemia)
- cough
- nausea
- tiredness
- fever
- headache
- abnormal liver function tests
- diarrhea

Laboratory tests may show abnormal changes to the cells in your bone marrow.

Tell your healthcare provider if you have any side effect that bothers you or that does not go away. These are not all of the possible side effects of eltrombopag tablets. For more information, ask your healthcare provider or pharmacist.

Call your doctor for medical advice about side effects. You may report side effects to FDA at 1-800-FDA-1088.

How should I store eltrombopag tablets?

- Store eltrombopag tablets at room temperature between 68°F to 77°F (20°C to 25°C).
- Eltrombopag tablets come in child-resistant package.
- Keep eltrombopag tablets in the bottle given to you.

Keep this and all drugs out of the reach of children.

General information about the safe and effective use of eltrombopag tablets

Medicines are sometimes prescribed for purposes other than those listed in a Medication Guide. Do not use eltrombopag tablets for a condition for which it was not prescribed. Do not give eltrombopag tablets to other people, even if they have the same symptoms that you have. It may harm them.

You can ask your healthcare provider or pharmacist for information about eltrombopag tablets that is written for health professionals.

What are the ingredients in eltrombopag tablets?

Active ingredient: eltrombopag olamine

Inactive ingredients: hypromellose, microcrystalline cellulose, polyethylene glycol, povidone (k-30), sodium starch glycolate, sodium stearyl fumarate, titanium dioxide and xylitol.

Additionally, each 25 mg tablet contains iron oxide red and iron oxide yellow, each 50 mg tablet contains FD&C blue #2 Aluminum Lake and each 75 mg tablet contains ferrousferic oxide and iron oxide red.

For more information, go to MedicalAffairs@zydususa.com or Tel.: 1-877-993-8779.

Manufactured by:
Zydus Lifesciences Ltd.
Ahmedabad, India

Distributed by:
Zydus Pharmaceuticals (USA) Inc.
Pennington, NJ 08534

Rev.: 06/25

This Medication Guide has been approved by the U.S. Food and Drug Administration.

PACKAGE LABEL.PRINCIPAL DISPLAY PANEL

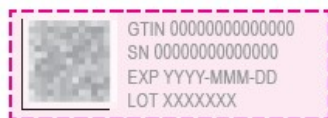
NDC 70710-1395-3

Eltrombopag Tablets, 12.5 mg

30 Tablets

Rx only

Zydus



Over Coding Template
No Varnished Area (Do Not Print)
(18 x 41 mm)



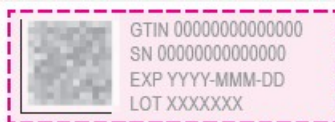
NDC 70710-1396-3

Eltrombopag Tablets, 25 mg

30 Tablets

Rx only

Zydus



Over Coding Template
No Varnished Area (Do Not Print)
(18 x 41 mm)



container label

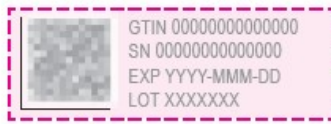
NDC 70710-1397-3

Eltrombopag Tablets, 50 mg

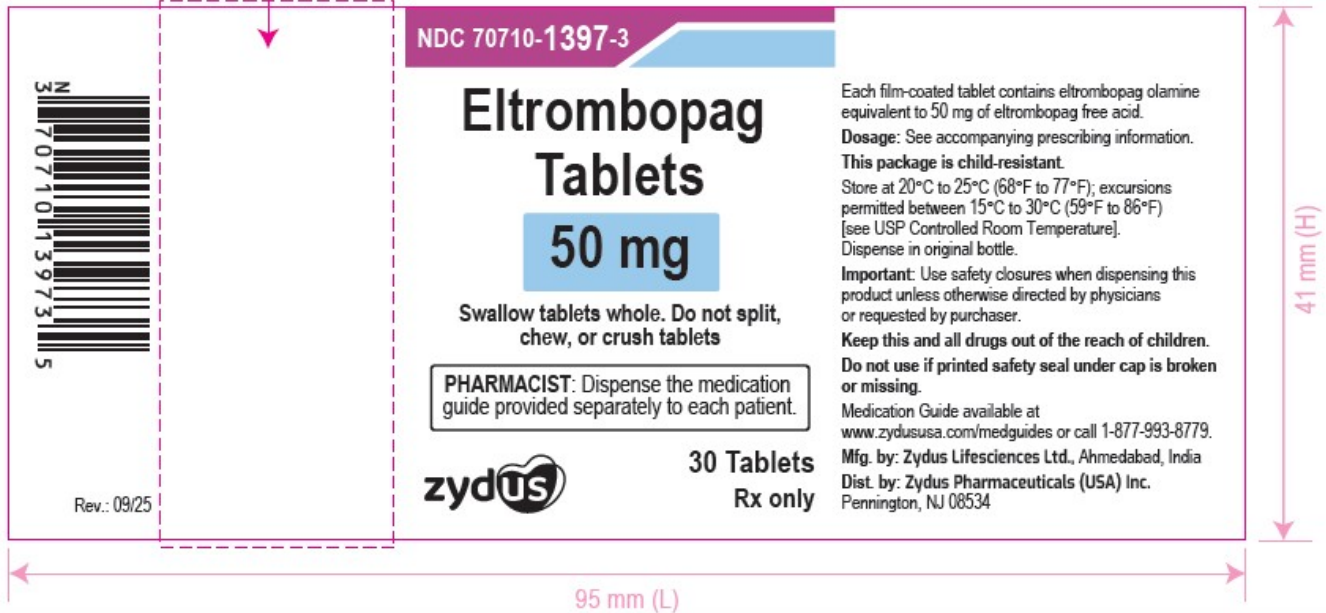
30 Tablets

Rx only

Zydus



Over Coding Template
No Varnished Area (Do Not Print)
(18 x 41 mm)



container label

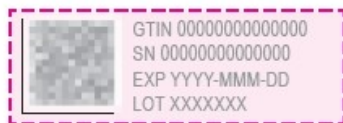
NDC 70710-1398-3

Eltrombopag Tablets, 75 mg

30 Tablets

Rx only

Zydus



Over Coding Template
No Varnished Area (Do Not Print)
(18 x 41 mm)



container label

ELTROMBOPAG

eltrombopag tablet

Product Information

Product Type	HUMAN PRESCRIPTION DRUG	Item Code (Source)	NDC:70710-1395
Route of Administration	ORAL		

Active Ingredient/Active Moiety

Ingredient Name	Basis of Strength	Strength
ELTROMBOPAG OLAMINE (UNII: 4U07F515LG) (ELTROMBOPAG - UNII:S56D65XJ9G)	ELTROMBOPAG	12.5 mg

Inactive Ingredients

Ingredient Name	Strength
HYPROMELLOSE 2910 (6 MPA.S) (UNII: 0WZ8WG20P6)	
MICROCRYSTALLINE CELLULOSE 101 (UNII: 7T9FYH5QMK)	
POLYETHYLENE GLYCOL 400 (UNII: B697894SGQ)	
POVIDONE K30 (UNII: U725QWY32X)	
SODIUM STARCH GLYCOLATE TYPE A POTATO (UNII: 5856J3G2A2)	

SODIUM STEARYL FUMARATE (UNII: 7CV7WJK4UI)				
TITANIUM DIOXIDE (UNII: 15FIX9V2JP)				
XYLITOL (UNII: VCQ006KQ1E)				
Product Characteristics				
Color	WHITE (white to light blue)		Score	no score
Shape	ROUND		Size	5mm
Flavor			Imprint Code	I
Contains				
Packaging				
#	Item Code	Package Description	Marketing Start Date	Marketing End Date
1	NDC:70710-1395-3	30 in 1 BOTTLE; Type 0: Not a Combination Product	01/14/2026	
Marketing Information				
Marketing Category		Application Number or Monograph Citation	Marketing Start Date	Marketing End Date
ANDA		ANDA216281	01/14/2026	

ELTROMBOPAG

eltrombopag tablet

Product Information			
Product Type	HUMAN PRESCRIPTION DRUG	Item Code (Source)	NDC:70710-1396
Route of Administration	ORAL		
Active Ingredient/Active Moiety			
Ingredient Name		Basis of Strength	Strength
ELTROMBOPAG OLAMINE (UNII: 4U07F515LG) (ELTROMBOPAG - UNII:S56D65XJ9G)		ELTROMBOPAG	25 mg
Inactive Ingredients			
Ingredient Name			Strength
FERRIC OXIDE RED (UNII: 1K09F3G675)			
FERRIC OXIDE YELLOW (UNII: EX438O2MRT)			
HYPROMELLOSE 2910 (6 MPA.S) (UNII: 0WZ8WG20P6)			
MICROCRYSTALLINE CELLULOSE 101 (UNII: 7T9FYH5QMK)			
POLYETHYLENE GLYCOL 400 (UNII: B697894SGQ)			
POVIDONE K30 (UNII: U725QWY32X)			

SODIUM STARCH GLYCOLATE TYPE A POTATO (UNII: 5856J3G2A2)	
SODIUM STEARYL FUMARATE (UNII: 7CV7WJK4UI)	
TITANIUM DIOXIDE (UNII: 15FIX9V2JP)	
XYLITOL (UNII: VCQ006KQ1E)	

Product Characteristics

Color	YELLOW (light yellow)	Score	no score
Shape	ROUND	Size	7mm
Flavor		Imprint Code	I7
Contains			

Packaging

#	Item Code	Package Description	Marketing Start Date	Marketing End Date
1	NDC:70710-1396-3	30 in 1 BOTTLE; Type 0: Not a Combination Product	01/14/2026	

Marketing Information

Marketing Category	Application Number or Monograph Citation	Marketing Start Date	Marketing End Date
ANDA	ANDA216281	01/14/2026	

ELTROMBOPAG

eltrombopag tablet

Product Information

Product Type	HUMAN PRESCRIPTION DRUG	Item Code (Source)	NDC:70710-1397
Route of Administration	ORAL		

Active Ingredient/Active Moiety

Ingredient Name	Basis of Strength	Strength
ELTROMBOPAG OLAMINE (UNII: 4U07F515LG) (ELTROMBOPAG - UNII:S56D65XJ9G)	ELTROMBOPAG	50 mg

Inactive Ingredients

Ingredient Name	Strength
FD&C BLUE NO. 2--ALUMINUM LAKE (UNII: 4AQJ3LG584)	
HYPROMELLOSE 2910 (6 MPA.S) (UNII: 0WZ8WG20P6)	
MICROCRYSTALLINE CELLULOSE 101 (UNII: 7T9FYH5QMK)	
POLYETHYLENE GLYCOL 400 (UNII: B697894SGQ)	
POVIDONE K30 (UNII: U725QWY32X)	

SODIUM STARCH GLYCOLATE TYPE A POTATO (UNII: 5856J3G2A2)	
SODIUM STEARYL FUMARATE (UNII: 7CV7WJK4UI)	
TITANIUM DIOXIDE (UNII: 15FIX9V2JP)	
XYLITOL (UNII: VCQ006KQ1E)	

Product Characteristics

Color	BLUE (light blue)	Score	no score
Shape	ROUND	Size	9mm
Flavor		Imprint Code	112
Contains			

Packaging

#	Item Code	Package Description	Marketing Start Date	Marketing End Date
1	NDC:70710-1397-7	14 in 1 BOTTLE; Type 0: Not a Combination Product	01/14/2026	
2	NDC:70710-1397-3	30 in 1 BOTTLE; Type 0: Not a Combination Product	01/14/2026	

Marketing Information

Marketing Category	Application Number or Monograph Citation	Marketing Start Date	Marketing End Date
ANDA	ANDA216281	01/14/2026	

ELTROMBOPAG

eltrombopag tablet

Product Information

Product Type	HUMAN PRESCRIPTION DRUG	Item Code (Source)	NDC:70710-1398
Route of Administration	ORAL		

Active Ingredient/Active Moiety

Ingredient Name	Basis of Strength	Strength
ELTROMBOPAG OLAMINE (UNII: 4U07F515LG) (ELTROMBOPAG - UNII:S56D65XJ9G)	ELTROMBOPAG	75 mg

Inactive Ingredients

Ingredient Name	Strength
FERRIC OXIDE RED (UNII: 1K09F3G675)	
FERROSO FERRIC OXIDE (UNII: XM0M87F357)	
HYPROMELLOSE 2910 (6 MPA.S) (UNII: 0WZ8WG20P6)	

MICROCRYSTALLINE CELLULOSE 101 (UNII: 7T9FYH5QMK)				
POLYETHYLENE GLYCOL 400 (UNII: B697894SGQ)				
POVIDONE K30 (UNII: U725QWY32X)				
SODIUM STARCH GLYCOLATE TYPE A POTATO (UNII: 5856J3G2A2)				
SODIUM STEARYL FUMARATE (UNII: 7CV7WJK4UI)				
TITANIUM DIOXIDE (UNII: 15FIX9V2JP)				
XYLITOL (UNII: VCQ006KQ1E)				
Product Characteristics				
Color	PURPLE (light purple)		Score	no score
Shape	ROUND		Size	11mm
Flavor			Imprint Code	l17
Contains				
Packaging				
#	Item Code	Package Description	Marketing Start Date	Marketing End Date
1	NDC:70710-1398-3	30 in 1 BOTTLE; Type 0: Not a Combination Product	01/14/2026	
Marketing Information				
Marketing Category		Application Number or Monograph Citation	Marketing Start Date	Marketing End Date
ANDA		ANDA216281	01/14/2026	

Labeler - Zydus Pharmaceuticals USA Inc. (156861945)

Registrant - Zydus Pharmaceuticals USA Inc. (156861945)

Establishment

Name	Address	ID/FEI	Business Operations
Zydus Lifesciences Limited		863362789	ANALYSIS(70710-1395, 70710-1396, 70710-1397, 70710-1398) , MANUFACTURE(70710-1395, 70710-1396, 70710-1397, 70710-1398)

Revised: 1/2026

Zydus Pharmaceuticals USA Inc.