

CLINDAMYCIN PHOSPHATE- clindamycin phosphate lotion
Preferred Pharmaceuticals Inc.

Clindamycin Phosphate Topical Solution USP, 1%,
Clindamycin Phosphate Gel USP, 1%,
Clindamycin Phosphate Lotion
(Clindamycin Phosphate Topical Suspension USP, 1%)

Rx only

For External Use.

DESCRIPTION

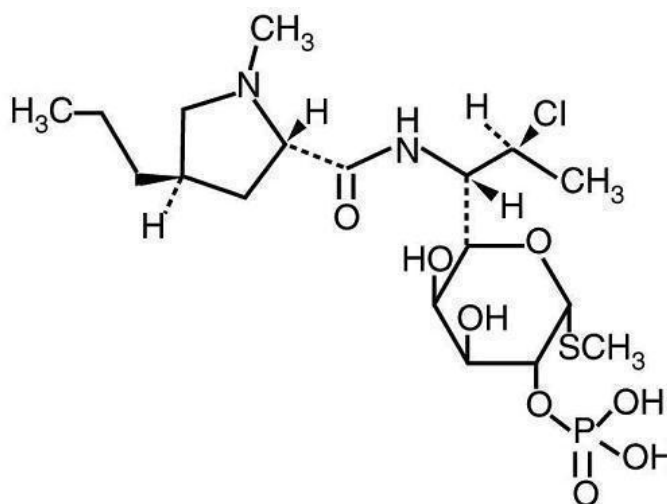
Clindamycin Phosphate Topical Solution and Clindamycin Phosphate Lotion (Clindamycin Phosphate Topical Suspension USP, 1%) contain clindamycin phosphate, USP, at a concentration equivalent to 10 mg clindamycin per milliliter. Clindamycin Phosphate Gel contains clindamycin phosphate, USP, at a concentration equivalent to 10 mg clindamycin per gram. Clindamycin phosphate is a water soluble ester of the semi-synthetic antibiotic produced by a 7(S)-chloro-substitution of the 7(R)-hydroxyl group of the parent antibiotic lincomycin.

The solution contains isopropyl alcohol 50% v/v, propylene glycol, and purified water.

The gel contains allantoin, carbomer 974P, methylparaben, polyethylene glycol 400, propylene glycol, sodium hydroxide, and purified water.

The lotion contains cetostearyl alcohol (2.5%); glycerin; glyceryl stearate SE (with potassium monostearate); isostearyl alcohol (2.5%); methylparaben (0.3%); sodium lauroyl sarcosinate; stearic acid; and purified water.

The structural formula is represented below:



Molecular Formula: $C_{18}H_{34}ClN_2O_8PS$

Molecular Weight: 504.97

The chemical name for clindamycin phosphate is Methyl 7-chloro-6,7,8-trideoxy-6-(1-methyl-*trans*-4-propyl-L-2-pyrrolidinecarboxamido)-1-thio-L-*threo*-α-D-*galacto*-octopyranoside 2-(dihydrogen phosphate).

CLINICAL PHARMACOLOGY

Although clindamycin phosphate is inactive *in vitro*, rapid *in vivo* hydrolysis converts this compound to the antibacterially active clindamycin.

Cross resistance has been demonstrated between clindamycin and lincomycin.

Antagonism has been demonstrated between clindamycin and erythromycin.

Following multiple topical applications of clindamycin phosphate at a concentration equivalent to 10 mg clindamycin per mL in an isopropyl alcohol and water solution, very low levels of clindamycin are present in the serum (0 to 3 ng/mL) and less than 0.2% of the dose is recovered in urine as clindamycin.

Clindamycin activity has been demonstrated in comedones from acne patients. The mean concentration of antibiotic activity in extracted comedones after application of Clindamycin Phosphate Topical Solution for 4 weeks was 597 mcg/g of comedonal material (range 0 to 1,490). Clindamycin *in vitro* inhibits all *Propionibacterium acnes* cultures tested (MICs 0.4 mcg/mL). Free fatty acids on the skin surface have been decreased from approximately 14% to 2% following application of clindamycin.

INDICATIONS AND USAGE

Clindamycin Phosphate Topical Solution, Clindamycin Phosphate Gel, and Clindamycin Phosphate Lotion are indicated in the treatment of acne vulgaris. In view of the potential for diarrhea, bloody diarrhea and pseudomembranous colitis, the physician should consider whether other agents are more appropriate. (See **CONTRAINDICATIONS**, **WARNINGS** and **ADVERSE REACTIONS**.)

CONTRAINDICATIONS

Clindamycin Phosphate Topical Solution, Clindamycin Phosphate Gel, and Clindamycin Phosphate Lotion are contraindicated in individuals with a history of hypersensitivity to preparations containing clindamycin or lincomycin, a history of regional enteritis or ulcerative colitis, or a history of antibiotic-associated colitis.

WARNINGS

Orally and parenterally administered clindamycin has been associated with severe colitis which may result in patient death. Use of the topical formulation of clindamycin results in absorption of the antibiotic from the skin surface. Diarrhea, bloody diarrhea, and colitis (including pseudomembranous colitis) have been reported with the use of topical and systemic clindamycin.

Studies indicate a toxin(s) produced by clostridia is one primary cause of antibiotic-associated colitis. The colitis is usually characterized by severe persistent diarrhea and severe abdominal cramps and may be associated with the passage of blood and mucus. Endoscopic examination may reveal pseudomembranous colitis. Stool culture for *Clostridium difficile* and stool assay for *C. difficile* toxin may be helpful diagnostically.

When significant diarrhea occurs, the drug should be discontinued. Large bowel endoscopy should be considered to establish a definitive diagnosis in cases of severe diarrhea.

Antiperistaltic agents such as opiates and diphenoxylate with atropine may prolong and/or worsen the condition. Vancomycin has been found to be effective in the treatment of antibiotic-associated pseudomembranous colitis produced by *Clostridium difficile*. The usual adult dosage is 500 mg to 2 grams of vancomycin orally per day in three to four divided doses administered for 7 to 10 days.

Cholestyramine or colestipol resins bind vancomycin *in vitro*. If both a resin and vancomycin are to be administered concurrently, it may be advisable to separate the time of administration of each drug.

Diarrhea, colitis, and pseudomembranous colitis have been observed to begin up to several

weeks following cessation of oral and parenteral therapy with clindamycin.

PRECAUTIONS

General:

Clindamycin Phosphate Topical Solution contains an alcohol base which will cause burning and irritation of the eye. In the event of accidental contact with sensitive surfaces (eye, abraded skin, mucous membranes), bathe with copious amounts of cool tap water. The solution has an unpleasant taste and caution should be exercised when applying medication around the mouth.

Clindamycin phosphate should be prescribed with caution in atopic individuals.

Drug Interactions:

Clindamycin has been shown to have neuromuscular blocking properties that may enhance the action of other neuromuscular blocking agents. Therefore it should be used with caution in patients receiving such agents.

Pregnancy:

Teratogenic effects

In clinical trials with pregnant women, the systemic administration of clindamycin during the second and third trimesters, has not been associated with an increased frequency of congenital abnormalities. There are no adequate studies in pregnant women during the first trimester of pregnancy. Clindamycin should be used during the first trimester of pregnancy only if clearly needed.

Nursing Mothers:

It is not known whether clindamycin is excreted in human milk following use of clindamycin phosphate. However, orally and parenterally administered clindamycin has been reported to appear in breast milk.

Clindamycin has the potential to cause adverse effects on the breastfed infant's gastrointestinal flora. If oral or intravenous clindamycin is required by a nursing mother, it is not a reason to discontinue breastfeeding, but an alternate drug may be preferred. Monitor the infant for possible adverse effects on the gastrointestinal flora, such as diarrhea, candidiasis (thrush, diaper rash) or rarely, blood in the stool indicating possible antibiotic-associated colitis.

The developmental and health benefits of breastfeeding should be considered along with the mother's clinical need for clindamycin and any potential adverse effects on the breastfed child from clindamycin or from the underlying maternal condition.

Pediatric Use:

Safety and effectiveness in pediatric patients under the age of 12 have not been established.

Geriatric Use:

Clinical studies for topical Clindamycin products did not include sufficient numbers of subjects aged 65 and over to determine whether they respond differently from younger subjects. Other reported clinical experience has not identified differences in responses between the elderly and younger patients.

ADVERSE REACTIONS

In 18 clinical studies of various formulations of clindamycin phosphate using placebo vehicle and/or active comparator drugs as controls, patients experienced a number of treatment emergent adverse dermatologic events [see table below].

Number of Patients Reporting Events

Treatment Emergent Adverse Event	Solution		Gel		Lotion	
	n=553	(%)	n=148	(%)	n=160	(%)
Burning	62	(11)	15	(10)	17	(11)
Itching	36	(7)	15	(10)	17	(11)
Burning/Itching	60	(11)	#	(-)	#	(-)
Dryness	105	(19)	34	(23)	29	(18)
Erythema	86	(16)	10	(7)	22	(14)
Oiliness/Oily Skin	8	(1)	26	(18)	12*	(10)
Peeling	61	(11)	#	(-)	11	(7)

not recorded

* of 126 subjects

Orally and parenterally administered clindamycin has been associated with severe colitis which may end fatally.

Cases of diarrhea, bloody diarrhea and colitis (including pseudomembranous colitis) have been reported as adverse reactions in patients treated with oral and parenteral formulations of clindamycin and rarely with topical clindamycin. (see **WARNINGS**.)

Abdominal pain, gastrointestinal disturbances, gram-negative folliculitis, eye pain and contact dermatitis have also been reported in association with the use of topical formulations of clindamycin.

OVERDOSAGE

Topically applied clindamycin phosphate can be absorbed in sufficient amounts to produce systemic effects. (see **WARNINGS**.)

DOSAGE AND ADMINISTRATION

Apply a thin film of Clindamycin Phosphate Topical Solution, Clindamycin Phosphate Lotion, or Clindamycin Phosphate Gel twice daily to affected area.

Lotion: Shake well immediately before using.

Keep all liquid dosage forms in containers tightly closed.

HOW SUPPLIED

Clindamycin Phosphate Lotion (Clindamycin Phosphate Topical Suspension, USP 1%) containing clindamycin phosphate equivalent to 10 mg clindamycin per milliliter is available in the following size:

60 mL bottle NDC 68788-7040-6

Store at controlled room temperature 20° to 25°C (68° to 77°F) [see USP]. Protect from freezing.

**Fougera
PHARMACEUTICALS INC.**

E. FOUGERA & CO.

A division of Fougera Pharmaceuticals Inc.

MELVILLE, NEW YORK 11747

46206122A/46206123A

R03/18

Relabeled By: Preferred Pharmaceuticals Inc.

PACKAGE LABEL – PRINCIPAL DISPLAY PANEL – 60 mL CONTAINER

NDC 68788-7040-6

Fougera®

**CLINDAMYCIN
PHOSPHATE LOTION**

FOR TOPICAL USE ONLY.

60 mL

Rx only

E. FOUGERA & CO.


A division of

Fougera Pharmaceuticals Inc.

Melville, New York 11747

Relabeled By: Preferred Pharmaceuticals Inc.

Clindamycin Phosphate Lotion 1%
Generic for: Cleocin T 1% Lotion
Each mL contains: clindamycin 10mg/mL
Pkg Size: Exp Date:
Lot#: Batch#: Ins:
Mfg: E. Fougera & Co., Melville, NY
Prod#:
Warning:
For topical use only. Rx Only. Usual Dosage: Apply a thin film twice daily to affected area. See package insert for complete product information. For external use only. Avoid contact with eyes. Keep container tightly closed. Shake well immediately before using. Keep out of the reach of children. Store at controlled room temperature 20° to 25° C (68° to 77° F) See USP Controlled Room Temperature. Protect from freezing. This product is sealed for your protection. If the seal is missing or broken, return to place of purchase.



CAUTION: Federal law PROHIBITS transfer of this drug to any person other than the patient for whom it was prescribed.

Clindamycin Phosphate Lotion 1%
Qty: Ins:
Lot#: Bat#: Prod# (NDC):

Clindamycin Phosphate Lotion 1%
Qty: Ins:
Lot#: Bat#: Prod# (NDC):

Clindamycin Phosphate Lotion 1%
Qty: Ins:
Insurance NDC:
Lot#: Bat#:

Clindamycin Phosphate Lotion 1%
Qty: Ins:
Lot#: Bat#: Prod# (NDC):

Directions English
Apply externally _____ times a day.

Instrucciones Espanol:
Aplique externamente _____ veces al dia.

Log

Chart

Billing

Patient

CLINDAMYCIN PHOSPHATE			
clindamycin phosphate lotion			
Product Information			
Product Type	HUMAN PRESCRIPTION DRUG	Item Code (Source)	NDC:68788-7040(NDC:0168-0203)
Route of Administration	TOPICAL		
Active Ingredient/Active Moiety			
	Ingredient Name	Basis of Strength	Strength
	CLINDAMYCIN PHOSPHATE (UNII: EH6D7113B) (CLINDAMYCIN - UNII:3U02EL437C)	CLINDAMYCIN	10 mg in 1 mL
Inactive Ingredients			

Ingredient Name	Strength
CETOSTEARYL ALCOHOL (UNII: 2DMT128M1S)	
GLYCERIN (UNII: PDC6A3C0OX)	
GLYCERYL MONOSTEARATE (UNII: 230OU9XXE4)	
ISOSTEARYL ALCOHOL (UNII: Q613OCQ44Y)	
METHYLPARABEN (UNII: A2I8C7HI9T)	
SODIUM LAUROYL SARCO SINATE (UNII: 632GS99618)	
STEARIC ACID (UNII: 4ELV7Z65AP)	
WATER (UNII: 059QF0K00R)	

Packaging

#	Item Code	Package Description	Marketing Start Date	Marketing End Date
1	NDC:68788-7040-6	1 in 1 CARTON	10/27/2017	
1		60 mL in 1 BOTTLE; Type 0: Not a Combination Product		

Marketing Information

Marketing Category	Application Number or Monograph Citation	Marketing Start Date	Marketing End Date
ANDA	ANDA065067	10/27/2017	

Labeler - Preferred Pharmaceuticals Inc. (791119022)

Registrant - Preferred Pharmaceuticals Inc. (791119022)

Establishment

Name	Address	ID/FEI	Business Operations
Preferred Pharmaceuticals Inc.		791119022	RELABEL(68788-7040)

Revised: 8/2019

Preferred Pharmaceuticals Inc.