

# ROSUVASTATIN CALCIUM- rosuvastatin calcium tablet, film coated

## McKesson Corporation dba SKY Packaging

### HIGHLIGHTS OF PRESCRIBING INFORMATION

These highlights do not include all the information needed to use ROSUVASTATIN TABLETS safely and effectively. See full prescribing information for ROSUVASTATIN TABLETS.

ROSUVASTATIN tablets, for oral use

Initial U.S. Approval: 2003

### RECENT MAJOR CHANGES

Dosage and Administration Modifications Due to Drug Interactions ( 2.6) 07/2023

Contraindications, Pregnancy and Lactation ( 4) Removed 01/2023

Warnings and Precautions ( 5.2) 01/2023

Warnings and Precautions, Concomitant Coumarin Anticoagulants ( 5.4) Removed 01/2023

### INDICATIONS AND USAGE

Rosuvastatin tablets are an HMG Co-A reductase inhibitor (statin) indicated: ( 1)

- To reduce the risk of stroke, myocardial infarction, and arterial revascularization procedures in adults without established coronary heart disease who are at increased risk of cardiovascular (CV) disease based on age, hsCRP  $\geq$  2 mg/L, and at least one additional CV risk factor.
- As an adjunct to diet to reduce LDL-C in adults with primary hyperlipidemia.
- As an adjunct to diet to reduce low-density lipoprotein cholesterol (LDL-C) and slow the progression of atherosclerosis in adults.
- As an adjunct to diet to reduce LDL-C in adults and pediatric patients aged 8 years and older with heterozygous familial hypercholesterolemia (HeFH).
- As an adjunct to other LDL-C-lowering therapies, or alone if such treatments are unavailable, to reduce LDL-C in adults and pediatric patients aged 7 years and older with homozygous familial hypercholesterolemia (HoFH).
- As an adjunct to diet for the treatment of adults with:
  - Primary dysbetalipoproteinemia.
  - Hypertriglyceridemia.

### DOSAGE AND ADMINISTRATION

Take orally with or without food, at any time of day. ( 2.1)

Assess LDL-C when clinically appropriate, as early as 4 weeks after initiating rosuvastatin tablets, and adjust dosage if necessary. ( 2.1)

*Adults:* Recommended dosage range is 5 to 40 mg once daily. ( 2.1)

*Pediatric Patients with HeFH:* Recommended dosage range is 5 to 10 mg once daily for patients aged 8 to less than 10 years of age, and 5 to 20 mg once daily for patients aged 10 years and older. ( 2.2)

*Pediatric Patients with HoFH:* Recommended dosage is 20 mg once daily for patients aged 7 years and older. ( 2.2)

*Asian Patients:* Initiate at 5 mg once daily. Consider risks and benefits of treatment if not adequately controlled at doses up to 20 mg once daily. ( 2.4)

*Patients with Severe Renal Impairment (not on hemodialysis):* Initiate at 5 mg once daily; do not exceed 10 mg once daily. ( 2.5, 5.1, 8.6)

See full prescribing information for rosuvastatin tablets dosage and administration modifications due to drug interactions. ( 2.6)

### DOSAGE FORMS AND STRENGTHS

Tablets: 10 mg and 20 mg of rosuvastatin. ( 3)

### CONTRAINDICATIONS

Acute liver failure or decompensated cirrhosis. ( 4)

Hypersensitivity to rosuvastatin or any excipients in rosuvastatin tablets. ( 4)

### WARNINGS AND PRECAUTIONS

- *Myopathy and Rhabdomyolysis:* Risk factors include age 65 years or greater, uncontrolled hypothyroidism, renal impairment, concomitant use with certain other drugs, and higher rosuvastatin dosage. Asian patients may be at higher risk for myopathy. Discontinue rosuvastatin if markedly elevated CK levels occur or myopathy is diagnosed or suspected. Temporarily discontinue rosuvastatin in patients experiencing an acute or serious condition at high risk of developing renal failure secondary to rhabdomyolysis. Inform patients of the risk of myopathy and rhabdomyolysis when starting or increasing rosuvastatin dosage. Instruct patients to promptly report unexplained muscle pain, tenderness, or weakness, particularly if accompanied by malaise or fever. ( 5.1, 7.1, 8.5, 8.6, 8.8)
- *Immune-Mediated Necrotizing Myopathy (IMNM):* Rare reports of IMNM, an autoimmune myopathy, have been reported with statin use. Discontinue rosuvastatin if IMNM is suspected. ( 5.2)
- *Hepatic Dysfunction:* Increases in serum transaminases have occurred, some persistent. Rare reports

of fatal and non-fatal hepatic failure have occurred. Consider testing liver enzymes before initiating therapy and as clinically indicated thereafter. If serious hepatic injury with clinical symptoms and/or hyperbilirubinemia or jaundice occurs, promptly discontinue rosuvastatin. ( 4, 5.3, 8.7)

#### ADVERSE REACTIONS

Most frequent adverse reactions (rate  $\geq 2\%$ ) are headache, nausea, myalgia, asthenia, and constipation. ( 6.1)

**To report SUSPECTED ADVERSE REACTIONS, contact McKesson Corporation dba SKY**

**Packaging at**

**1-888-243-4363 or FDA at 1-800-FDA-1088 or [www.fda.gov/medwatch](http://www.fda.gov/medwatch)**

#### DRUG INTERACTIONS

See full prescribing information for details regarding concomitant use of rosuvastatin with other drugs that increase the risk of myopathy and rhabdomyolysis. ( 2.6, 7.1)

*Aluminum and Magnesium Hydroxide Combination Antacids:* Administer rosuvastatin at least 2 hours after the antacid. ( 2.6, 7.2)

*Warfarin:* Obtain INR prior to starting rosuvastatin. Monitor INR frequently until stable upon initiation, dose titration or discontinuation. ( 7.3)

#### USE IN SPECIFIC POPULATIONS

- *Pregnancy:* May cause fetal harm. ( 8.1)
- *Lactation:* Breastfeeding not recommended during treatment with rosuvastatin. ( 8.2)

**See 17 for PATIENT COUNSELING INFORMATION and FDA-approved patient labeling.**

**Revised: 11/2023**

---

## FULL PRESCRIBING INFORMATION: CONTENTS\*

### 1 INDICATIONS AND USAGE

### 2 DOSAGE AND ADMINISTRATION

2.1 General Dosage and Administration Information

2.2 Recommended Dosage in Adult Patients

2.3 Recommended Dosage in Pediatric Patients

2.4 Dosing in Asian Patients

2.5 Recommended Dosage in Patients with Renal Impairment

2.6 Dosage and Administration Modifications Due to Drug Interactions

### 3 DOSAGE FORMS AND STRENGTHS

### 4 CONTRAINDICATIONS

### 5 WARNINGS AND PRECAUTIONS

5.1 Myopathy and Rhabdomyolysis

5.2 Immune-Mediated Necrotizing Myopathy

5.3 Hepatic Dysfunction

5.4 Proteinuria and Hematuria

5.5 Increases in HbA1c and Fasting Serum Glucose Levels

### 6 ADVERSE REACTIONS

6.1 Clinical Trials Experience

6.2 Postmarketing Experience

### 7 DRUG INTERACTIONS

7.1 Drug Interactions that Increase the Risk of Myopathy and Rhabdomyolysis with Rosuvastatin

7.2 Drug Interactions that Decrease the Efficacy of Rosuvastatin

7.3 Rosuvastatin Effects on Other Drugs

### 8 USE IN SPECIFIC POPULATIONS

8.1 Pregnancy

8.2 Lactation

8.4 Pediatric Use

8.5 Geriatric Use

- 8.6 Renal Impairment
- 8.7 Hepatic Impairment
- 8.8 Asian Patients

## **10 OVERDOSAGE**

## **11 DESCRIPTION**

## **12 CLINICAL PHARMACOLOGY**

- 12.1 Mechanism of Action
- 12.2 Pharmacodynamics
- 12.3 Pharmacokinetics
- 12.5 Pharmacogenomics

## **13 NONCLINICAL TOXICOLOGY**

- 13.1 Carcinogenesis, Mutagenesis, Impairment of Fertility

## **14 CLINICAL STUDIES**

## **16 HOW SUPPLIED/STORAGE AND HANDLING**

## **17 PATIENT COUNSELING INFORMATION**

\* Sections or subsections omitted from the full prescribing information are not listed.

---

## **FULL PRESCRIBING INFORMATION**

### **1 INDICATIONS AND USAGE**

Rosuvastatin tablets are indicated:

- To reduce the risk of stroke, myocardial infarction, and arterial revascularization procedures in adults without established coronary heart disease who are at increased risk of cardiovascular (CV) disease based on age, hsCRP  $\geq 2$  mg/L, and at least one additional CV risk factor.
- As an adjunct to diet to:
- Reduce LDL-C in adults with primary hyperlipidemia.
- Reduce low-density lipoprotein cholesterol (LDL-C) and slow the progression of atherosclerosis in adults.
- Reduce LDL-C in adults and pediatric patients aged 8 years and older with heterozygous familial hypercholesterolemia (HeFH).
- As an adjunct to other LDL-C-lowering therapies, or alone if such treatments are unavailable, to reduce LDL-C in adults and pediatric patients aged 7 years and older with homozygous familial hypercholesterolemia (HoFH).
- As an adjunct to diet for the treatment of adults with:
- Primary dysbetalipoproteinemia.
- Hypertriglyceridemia.

### **2 DOSAGE AND ADMINISTRATION**

#### **2.1 General Dosage and Administration Information**

- Administer rosuvastatin tablets orally as a single dose at any time of day, with or without food. The tablet should be swallowed whole.
- Assess LDL-C when clinically appropriate, as early as 4 weeks after initiating rosuvastatin tablets, and adjust the dosage if necessary.
- If a dose is missed, advise patients not take an extra dose. Resume treatment with the next dose.

## 2.2 Recommended Dosage in Adult Patients

- The dosage range for rosuvastatin tablets is 5 to 40 mg orally once daily.
- The recommended dose of rosuvastatin tablets depends on a patient's indication for usage, LDL-C, and individual risk for cardiovascular events.

## 2.3 Recommended Dosage in Pediatric Patients

### Dosage in Pediatric Patients 8 Years of Age and Older with HeFH

The recommended dosage range is 5 mg to 10 mg orally once daily in patients aged 8 years to less than 10 years and 5 mg to 20 mg orally once daily in patients aged 10 years and older.

### Dosage in Pediatric Patients 7 Years of Age and Older with HoFH

The recommended dosage is 20 mg orally once daily.

## 2.4 Dosing in Asian Patients

Initiate rosuvastatin tablets at 5 mg once daily due to increased rosuvastatin plasma concentrations. Consider the risks and benefits of rosuvastatin tablets when treating Asian patients not adequately controlled at doses up to 20 mg once daily [see *Warnings and Precautions ( 5.1)*, *Use in Specific Populations ( 8.8)*, and *Clinical Pharmacology ( 12.3)*].

## 2.5 Recommended Dosage in Patients with Renal Impairment

In patients with severe renal impairment (CL<sub>cr</sub> <30 mL/min/1.73 m<sup>2</sup>) not on hemodialysis, the recommended starting dosage is 5 mg once daily and should not exceed 10 mg once daily [see *Warnings and Precautions ( 5.1)* and *Use in Specific Populations ( 8.6)*].

There are no dosage adjustment recommendations for patients with mild and moderate renal impairment.

## 2.6 Dosage and Administration Modifications Due to Drug Interactions

### Rosuvastatin Tablets Dosage Modifications Due to Drug Interactions

Table 1 displays dosage modifications for rosuvastatin tablets due to drug interactions [see *Warnings and Precautions ( 5.1)* and *Drug Interactions ( 7.1)*].

**Table 1: Rosuvastatin Tablets Dosage Modifications Due to Drug Interactions**

<b>Concomitantly Used Drug</b>	<b>Rosuvastatin Tablets Dosage Modifications</b>
Cyclosporine	Do not exceed 5 mg once daily.
Teriflunomide	Do not exceed 10 mg once daily.
Enasidenib	Do not exceed 10 mg once daily.
Capmatinib	Do not exceed 10 mg once daily.
Fostamatinib	Do not exceed 20 mg once daily.
Febuxostat	Do not exceed 20 mg once daily.
Gemfibrozil	Avoid concomitant use. If used concomitantly, initiate at 5 mg once daily and do not exceed 10 mg once daily.
Tafamidis	Avoid concomitant use. If used concomitantly, initiate at 5 mg once daily

	and do not exceed 20 mg once daily.
Antiviral Medications	
<ul style="list-style-type: none"> <li>• Sofbuvir/velpatasvir/voxilaprevir</li> <li>• Ledipasvir/sofosbuvir</li> </ul>	Concomitant use not recommended.
<ul style="list-style-type: none"> <li>• Simeprevir</li> <li>• Dasabuvir/ombitasvir/paritaprevir/ritonavir</li> <li>• Elbasvir/Grazoprevir</li> <li>• Sofosbuvir/Velpatasvir</li> <li>• Glecaprevir/Pibrentasvir</li> <li>• Atazanavir/Ritonavir</li> <li>• Lopinavir/Ritonavir</li> </ul>	Initiate at 5 mg once daily. Do not exceed 10 mg once daily.
Darolutamide	Do not exceed 5 mg once daily.
Regorafenib	Do not exceed 10 mg once daily.

### Rosuvastatin Tablets Administration Modifications Due to Drug Interactions

When taking rosuvastatin tablets with an aluminum and magnesium hydroxide combination antacid, administer rosuvastatin tablets at least 2 hours before the antacid [see *Drug Interactions* ( 7.2)].

## **3 DOSAGE FORMS AND STRENGTHS**

Rosuvastatin Tablets, USP:

- 10 mg of rosuvastatin: Pink colored, film-coated, circular tablets debossed with “G” on one side and “D” on the other side.
- 20 mg of rosuvastatin: Pink colored, film-coated, circular tablets debossed with “G” on one side and “O” on the other side.

## **4 CONTRAINDICATIONS**

Rosuvastatin tablets are contraindicated in the following conditions:

- Acute liver failure or decompensated cirrhosis [see *Warnings and Precautions* (5.3)].
- Hypersensitivity to rosuvastatin or any excipients in rosuvastatin tablets. Hypersensitivity reactions including rash, pruritus, urticaria, and angioedema have been reported with rosuvastatin tablets [see *Adverse Reactions* (6.1)] .

## **5 WARNINGS AND PRECAUTIONS**

### **5.1 Myopathy and Rhabdomyolysis**

Rosuvastatin may cause myopathy [muscle pain, tenderness, or weakness associated with elevated creatine kinase (CK)] and rhabdomyolysis. Acute kidney injury secondary to myoglobinuria and rare fatalities have occurred as a result of rhabdomyolysis with statins, including rosuvastatin.

#### Risk Factors for Myopathy

Risk factors for myopathy include age 65 years or greater, uncontrolled hypothyroidism, renal impairment, concomitant use with certain other drugs (including other lipid-lowering therapies), and higher rosuvastatin dosage. Asian patients on rosuvastatin may

be at higher risk for myopathy [see *Drug Interactions ( 7.1) and Use in Specific Populations ( 8.8)*]. The myopathy risk is greater in patients taking rosuvastatin 40 mg daily compared with lower rosuvastatin dosages.

### Steps to Prevent or Reduce the Risk of Myopathy and Rhabdomyolysis

The concomitant use of rosuvastatin with cyclosporine or gemfibrozil is not recommended. rosuvastatin dosage modifications are recommended for patients taking certain antiviral medications, darolutamide, and regorafenib [see *Dosage and Administration ( 2.6)*]. Niacin, fibrates, and colchicine may also increase the risk of myopathy and rhabdomyolysis [see *Drug Interactions ( 7.1)*].

Discontinue rosuvastatin if markedly elevated CK levels occur or if myopathy is either diagnosed or suspected. Muscle symptoms and CK elevations may resolve if rosuvastatin is discontinued. Temporarily discontinue rosuvastatin in patients experiencing an acute or serious condition at high risk of developing renal failure secondary to rhabdomyolysis (e.g., sepsis; shock; severe hypovolemia; major surgery; trauma; severe metabolic, endocrine, or electrolyte disorders; or uncontrolled epilepsy).

Inform patients of the risk of myopathy and rhabdomyolysis when starting or increasing the rosuvastatin dosage. Instruct patients to promptly report any unexplained muscle pain, tenderness or weakness, particularly if accompanied by malaise or fever.

## **5.2 Immune-Mediated Necrotizing Myopathy**

There have been rare reports of immune-mediated necrotizing myopathy (IMNM), an autoimmune myopathy, associated with statin use, including reports of recurrence when the same or a different statin was administered. IMNM is characterized by proximal muscle weakness and elevated serum creatine kinase that persist despite discontinuation of statin treatment; positive anti-HMG CoA reductase antibody; muscle biopsy showing necrotizing myopathy; and improvement with immunosuppressive agents. Additional neuromuscular and serologic testing may be necessary. Treatment with immunosuppressive agents may be required. Discontinue rosuvastatin if IMNM is suspected.

## **5.3 Hepatic Dysfunction**

Increases in serum transaminases have been reported with use of rosuvastatin [see *Adverse Reactions ( 6.1)*]. In most cases, these changes appeared soon after initiation, were transient, were not accompanied by symptoms, and resolved or improved on continued therapy or after a brief interruption in therapy. In a pooled analysis of placebo-controlled trials, increases in serum transaminases to >3 times the upper limit of normal occurred in 1.1% of patients taking rosuvastatin versus 0.5% of patients treated with placebo. Marked persistent increases of hepatic transaminases have also occurred with rosuvastatin. There have been rare postmarketing reports of fatal and non-fatal hepatic failure in patients taking statins, including rosuvastatin.

Patients who consume substantial quantities of alcohol and/or have a history of liver disease may be at increased risk for hepatic injury [see *Use in Specific Populations ( 8.7)*].

Consider liver enzyme testing before rosuvastatin initiation and when clinically indicated thereafter. Rosuvastatin is contraindicated in patients with acute liver failure or decompensated cirrhosis [see *Contraindications ( 4)*]. If serious hepatic injury with clinical symptoms and/or hyperbilirubinemia or jaundice occurs, promptly discontinue rosuvastatin.

## **5.4 Proteinuria and Hematuria**

In the rosuvastatin clinical trial program, dipstick-positive proteinuria and microscopic hematuria were observed among rosuvastatin treated patients. These findings were more frequent in patients taking rosuvastatin 40 mg, when compared to lower doses of rosuvastatin or comparator statins, though it was generally transient and was not associated with worsening renal function. Although the clinical significance of this finding is unknown, consider a dose reduction for patients on rosuvastatin therapy with unexplained persistent proteinuria and/or hematuria during routine urinalysis testing.

### 5.5 Increases in HbA1c and Fasting Serum Glucose Levels

Increases in HbA1c and fasting serum glucose levels have been reported with statins, including rosuvastatin. Based on clinical trial data with rosuvastatin, in some instances these increases may exceed the threshold for the diagnosis of diabetes mellitus [see *Adverse Reactions (6.1)*].

Optimize lifestyle measures, including regular exercise, maintaining a healthy body weight, and making healthy food choices.

## 6 ADVERSE REACTIONS

The following important adverse reactions are described below and elsewhere in the labeling:

Myopathy and Rhabdomyolysis [see *Warnings and Precautions ( 5.1)*]

Immune-Mediated Necrotizing Myopathy [see *Warnings and Precautions ( 5.2)*]

Hepatic Dysfunction [see *Warnings and Precautions ( 5.3)*]

Proteinuria and Hematuria [see *Warnings and Precautions ( 5.4)*]

Increases in HbA1c and Fasting Serum Glucose Levels [see *Warnings and Precautions ( 5.5)*]

### 6.1 Clinical Trials Experience

Because clinical trials are conducted under widely varying conditions, adverse reaction rates observed in the clinical trials of a drug cannot be directly compared to rates in the clinical trials of another drug and may not reflect the rates observed in clinical practice.

Adverse reactions reported in  $\geq 2\%$  of patients in placebo-controlled clinical studies and at a rate greater than placebo are shown in Table 2. These studies had a treatment duration of up to 12 weeks.

**Table 2: Adverse Reactions Reported in  $\geq 2\%$  of Patients Treated with Rosuvastatin and > Placebo in Placebo-Controlled Trials**

Adverse Reactions	Placebo N=382%	Rosuvastatin 5 mg N=291%	Rosuvastatin 10 mg N=283%	Rosuvastatin 20 mg N=64%	Rosuvastatin 40 mg N=106%	Total Rosuvastatin 5 mg to 40 mg N=744%
Headache	5	5.5	4.9	3.1	8.5	5.5
Nausea	3.1	3.8	3.5	6.3	0	3.4
Myalgia	1.3	3.1	2.1	6.3	1.9	2.8
Asthenia	2.6	2.4	3.2	4.7	0.9	2.7
Constipation	2.4	2.1	2.1	4.7	2.8	2.4

Other adverse reactions reported in clinical studies were abdominal pain, dizziness, hypersensitivity (including rash, pruritus, urticaria, and angioedema) and pancreatitis. The following laboratory abnormalities have also been reported: dipstick-positive proteinuria and microscopic hematuria ;elevated creatine phosphokinase, transaminases, glucose, glutamyl transpeptidase, alkaline phosphatase, and bilirubin; and thyroid function abnormalities.

In the METEOR study, patients were treated with rosuvastatin 40 mg (n=700) or placebo (n=281) with a mean treatment duration of 1.7 years. Adverse reactions reported in  $\geq 2\%$  of patients and at a rate greater than placebo are shown in Table 3.

**Table 3: Adverse Reactions Reported in  $\geq 2\%$  of Patients Treated with Rosuvastatin and > Placebo in the METEOR Trial**

<b>Adverse Reactions</b>	<b>Placebo N=281 %</b>	<b>Rosuvastatin 40 mg N=700 %</b>
Myalgia	12.1	12.7
Arthralgia	7.1	10.1
Headache	5.3	6.4
Dizziness	2.8	4
Increased CPK	0.7	2.6
Abdominal pain	1.8	2.4
ALT >3 x ULN <sup>1</sup>	0.7	2.2

<sup>1</sup>Frequency recorded as abnormal laboratory value.

In the JUPITER study, patients were treated with rosuvastatin 20 mg (n=8901) or placebo (n=8901) for a mean duration of 2 years. In JUPITER, there was a significantly higher frequency of diabetes mellitus reported in patients taking rosuvastatin (2.8%) versus patients taking placebo (2.3%). Mean HbA1c was significantly increased by 0.1% in rosuvastatin-treated patients compared to placebo-treated patients. The number of patients with a HbA1c >6.5% at the end of the trial was significantly higher in rosuvastatin-treated versus placebo-treated patients [see *Clinical Studies ( 14)*].

Adverse reactions reported in  $\geq 2\%$  of patients and at a rate greater than placebo are shown in Table 4.

**Table 4: Adverse Reactions Reported in  $\geq 2\%$  of Patients Treated with Rosuvastatin and > Placebo in the JUPITER Trial**

<b>Adverse Reactions</b>	<b>Placebo N=8,901 %</b>	<b>Rosuvastatin 20 mg N=8,901 %</b>
Myalgia	6.6	7.6
Arthralgia	3.2	3.8
Constipation	3	3.3
Diabetes mellitus	2.3	2.8
Nausea	2.3	2.4



In a 12-week controlled study in pediatric patients 10 to 17 years of age with HeFH with rosuvastatin 5 to 20 mg daily [see *Use in Specific Populations ( 8.4) and Clinical Studies ( 14)*], elevations in serum CK >10 x ULN were observed more frequently in rosuvastatin-treated patients compared with patients receiving placebo. Four of 130 (3%) patients treated with rosuvastatin (2 treated with 10 mg and 2 treated with 20 mg) had increased CK >10 x ULN, compared to 0 of 46 patients on placebo.

## 6.2 Postmarketing Experience

The following adverse reactions have been identified during postapproval use of rosuvastatin:

Because these reactions are reported voluntarily from a population of uncertain size, it is not always possible to reliably estimate their frequency or establish a causal relationship to drug exposure.

*Blood Disorders:*thrombocytopenia

*Hepatobiliary Disorders:*hepatitis, jaundice, fatal and non-fatal hepatic failure

*Musculoskeletal Disorders:*arthralgia, rare reports of immune-mediated necrotizing myopathy associated with statin use

*Nervous System Disorders:*peripheral neuropathy, rare postmarketing reports of cognitive impairment (e.g., memory loss, forgetfulness, amnesia, memory impairment, and confusion) associated with the use of all statins. The reports are generally nonserious, and reversible upon statin discontinuation, with variable times to symptom onset (1 day to years) and symptom resolution (median of 3 weeks). There have been rare reports of new-onset or exacerbation of myasthenia gravis, including ocular myasthenia, and reports of recurrence when the same or a different statin was administered.

*Psychiatric Disorders:*depression, sleep disorders (including insomnia and nightmares)

*Reproductive System and Breast Disorders:*gynecomastia

*Respiratory Disorders:*interstitial lung disease

*Skin and Subcutaneous Tissue Disorders:*drug reaction with eosinophilia and systemic symptoms (DRESS), lichenoid drug eruption

## 7 DRUG INTERACTIONS

### 7.1 Drug Interactions that Increase the Risk of Myopathy and Rhabdomyolysis with Rosuvastatin

Rosuvastatin is a substrate of CYP2C9 and transporters (such as OATP1B1, BCRP). Rosuvastatin plasma levels can be significantly increased with concomitant administration of inhibitors of CYP2C9 and transporters. Table 5 includes a list of drugs that increase the risk of myopathy and rhabdomyolysis when used concomitantly with rosuvastatin and instructions for preventing or managing them [see *Warnings and Precautions ( 5.1) and Clinical Pharmacology ( 12.3)*].

#### **Table 5: Drug Interactions that Increase the Risk of Myopathy and Rhabdomyolysis with rosuvastatin**

<b>Cyclosporine</b>
---------------------

1. <i>Clinical Impact:</i>	Cyclosporine increased rosuvastatin exposure 7-fold. The risk of myopathy and rhabdomyolysis is increased with concomitant use of cyclosporine or gemfibrozil with rosuvastatin.
<i>Intervention:</i>	If used concomitantly, do not exceed a dose of rosuvastatin 5 mg once daily .
<b>Teriflunomide</b>	
<i>Clinical Impact:</i>	Teriflunomide increased rosuvastatin exposure more than 2.5-fold. The risk of myopathy and rhabdomyolysis is increased with concomitant use.
1. <i>Intervention:</i>	In patients taking teriflunomide, do not exceed a dose of rosuvastatin 10 mg once daily .
<b>Enasidenib</b>	
1. <i>Clinical Impact:</i>	Enasidenib increased rosuvastatin exposure more than 2.4-fold. The risk of myopathy and rhabdomyolysis is increased with concomitant use.
1. <i>Intervention:</i>	In patients taking enasidenib, do not exceed a dose of rosuvastatin 10 mg once daily.
<b>Capmatinib</b>	
<i>Clinical Impact:</i>	Capmatinib increased rosuvastatin exposure more than 2.1-fold. The risk of myopathy and rhabdomyolysis is increased with concomitant use.
<i>Intervention:</i>	In patients taking capmatinib, do not exceed a dose of rosuvastatin 10 mg once daily .
<b>Fostamatinib</b>	
<i>Clinical Impact:</i>	Fostamatinib increased rosuvastatin exposure more than 2.0-fold. The risk of myopathy and rhabdomyolysis is increased with concomitant use.
<i>Intervention:</i>	In patients taking fostamatinib, do not exceed a dose of rosuvastatin 20 mg once daily .
<b>Febuxostat</b>	
<i>Clinical Impact:</i>	Febuxostat increased rosuvastatin exposure more than 1.9-fold. The risk of myopathy and rhabdomyolysis is increased with concomitant use.
<i>Intervention:</i>	In patients taking febuxostat, do not exceed a dose of rosuvastatin 20 mg once daily .
<b>Gemfibrozil</b>	
<i>Clinical Impact:</i>	Gemfibrozil significantly increased rosuvastatin exposure and gemfibrozil may cause myopathy when given alone. The risk of myopathy and rhabdomyolysis is increased with concomitant use of gemfibrozil with rosuvastatin.
<i>Intervention:</i>	Avoid concomitant use of gemfibrozil with rosuvastatin. If used concomitantly, initiate rosuvastatin at 5 mg once daily and do not exceed a dose of rosuvastatin 10 mg once daily .
<b>Tafamidis</b>	
<i>Clinical Impact:</i>	Tafamidis significantly increased rosuvastatin exposure and tafamidis may cause myopathy when given alone. The risk of myopathy and rhabdomyolysis is increased with concomitant use of tafamidis with rosuvastatin.
<i>Intervention:</i>	Avoid concomitant use of tafamidis with rosuvastatin. If used concomitantly, initiate rosuvastatin at 5 mg once daily and do not exceed a dose of rosuvastatin 20 mg once daily. Monitor for signs of

	myopathy and rhabdomyolysis if used concomitantly with rosuvastatin .	
<b>Anti-Viral Medications</b>		
<i>Clinical Impact:</i>	Rosuvastatin plasma levels were significantly increased with concomitant administration of many anti-viral drugs, which increases the risk of myopathy and rhabdomyolysis.	
<i>Intervention:</i>	<ul style="list-style-type: none"> <li>• Sofosbuvir/velpatasvir/voxilaprevir</li> <li>• Ledipasvir/sofosbuvir</li> </ul>	Avoid concomitant use with rosuvastatin.
	<ul style="list-style-type: none"> <li>• Simeprevir</li> <li>• Dasabuvir/ombitasvir/paritaprevir/ritonavir</li> <li>• Elbasvir/grazoprevir</li> <li>• Sofosbuvir/velpatasvir</li> <li>• Glecaprevir/pibrentasvir</li> <li>• Atazanavir/ritonavir</li> <li>• Lopinavir/ritonavir</li> </ul>	Initiate with rosuvastatin 5 mg once daily, and do not exceed a dose of rosuvastatin 10 mg once daily.
<b>Darolutamide</b>		
<i>Clinical Impact:</i>	Darolutamide increased rosuvastatin exposure more than 5-fold. The risk of myopathy and rhabdomyolysis is increased with concomitant use .	
<i>Intervention:</i>	In patients taking darolutamide, do not exceed a dose of rosuvastatin 5 mg once daily .	
<b>Regorafenib</b>		
<i>Clinical Impact:</i>	Regorafenib increased rosuvastatin exposure and may increase the risk of myopathy.	
<i>Intervention:</i>	In patients taking regorafenib, do not exceed a dose of rosuvastatin 10 mg once daily .	
<b>Fenofibrates (e.g., fenofibrate and fenofibric acid)</b>		
<i>Clinical Impact:</i>	Fibrates may cause myopathy when given alone. The risk of myopathy and rhabdomyolysis is increased with concomitant use of fibrates with rosuvastatin.	
<i>Intervention:</i>	Consider if the benefit of using fibrates concomitantly with rosuvastatin outweighs the increased risk of myopathy and rhabdomyolysis. If concomitant use is decided, monitor patients for signs and symptoms of myopathy, particularly during initiation of therapy and during upward dose titration of either drug.	
<b>Niacin</b>		
<i>Clinical Impact:</i>	Cases of myopathy and rhabdomyolysis have occurred with concomitant use of lipid-modifying doses ( $\geq 1$ g/day) of niacin with rosuvastatin.	
<i>Intervention:</i>	Consider if the benefit of using lipid-modifying doses ( $\geq 1$ g/day) of niacin concomitantly with rosuvastatin outweighs the increased risk of myopathy and rhabdomyolysis. If concomitant use is decided, monitor patients for signs and symptoms of myopathy, particularly during initiation of therapy and during upward dose titration of either drug.	
<b>Colchicine</b>		
<i>Clinical Impact:</i>	Cases of myopathy and rhabdomyolysis have been reported with concomitant use of colchicine with rosuvastatin.	
<i>Intervention:</i>	Consider if the benefit of using colchicine concomitantly with rosuvastatin outweighs the increased risk of myopathy and rhabdomyolysis. If concomitant use is decided, monitor patients for signs and symptoms of myopathy, particularly during initiation of	

therapy and during upward dose titration of either drug.

## 7.2 Drug Interactions that Decrease the Efficacy of Rosuvastatin

Table 6 presents drug interactions that may decrease the efficacy of rosuvastatin and instructions for preventing or managing them.

**Table 6: Drug Interactions that Decrease the Efficacy of Rosuvastatin**

<b>Antacids</b>	
<i>Clinical Impact:</i>	Concomitant aluminum and magnesium hydroxide combination antacid administration decreased the mean exposure of rosuvastatin 50% [see <i>Clinical Pharmacology ( 12.3)</i> ].
<i>Intervention:</i>	In patients taking antacid, administer rosuvastatin at least 2 hours after the antacid .

## 7.3 Rosuvastatin Effects on Other Drugs

Table 7 presents rosuvastatin's effect on other drugs and instructions for preventing or managing them.

**Table 7: Rosuvastatin Effects on Other Drugs**

<b>Warfarin</b>	
<i>Clinical Impact:</i>	Rosuvastatin significantly increased the INR in patients receiving warfarin [see <i>Clinical Pharmacology ( 12.3)</i> ].
<i>Intervention:</i>	In patients taking warfarin, obtain an INR before starting rosuvastatin and frequently enough after initiation, dose titration or discontinuation to ensure that no significant alteration in INR occurs. Once the INR is stable, monitor INR at regularly recommended intervals.

## 8 USE IN SPECIFIC POPULATIONS

### 8.1 Pregnancy

#### Risk Summary

Discontinue rosuvastatin when pregnancy is recognized. Alternatively, consider the ongoing therapeutic needs of the individual patient.

Rosuvastatin decreases synthesis of cholesterol and possibly other biologically active substances derived from cholesterol; therefore, rosuvastatin may cause fetal harm when administered to pregnant patients based on the mechanism of action [see *Clinical Pharmacology ( 12.1)*]. In addition, treatment of hyperlipidemia is not generally necessary during pregnancy. Atherosclerosis is a chronic process and the discontinuation of lipid-lowering drugs during pregnancy should have little impact on the outcome of long-term therapy of primary hyperlipidemia for most patients.

Available data from case series and prospective and retrospective observational cohort studies over decades of use with statins in pregnant women have not identified a drug-associated risk of major congenital malformations. Published data from prospective and retrospective observational cohort studies with rosuvastatin use in pregnant women are insufficient to determine if there is a drug-associated risk of miscarriage (see *Data*).

In animal reproduction studies, no adverse developmental effects were observed in

pregnant rats or rabbits orally administered rosuvastatin during the period of organogenesis at doses that resulted in systemic exposures equivalent to human exposures at the maximum recommended human dose (MRHD) of 40 mg/day, based on AUC and body surface area ( $\text{mg}/\text{m}^2$ ), respectively (see *Data*).

The estimated background risk of major birth defects and miscarriage for the indicated population is unknown. In the U.S. general population, the estimated background risk of major birth defects and miscarriage in clinically recognized pregnancies is 2 to 4% and 15 to 20%, respectively.

## Data

### *Human Data*

A Medicaid cohort linkage study of 1152 statin-exposed pregnant women compared to 886,996 controls did not find a significant teratogenic effect from maternal use of statins in the first trimester of pregnancy, after adjusting for potential confounders – including maternal age, diabetes mellitus, hypertension, obesity, and alcohol and tobacco use – using propensity score-based methods. The relative risk of congenital malformations between the group with statin use and the group with no statin use in the first trimester was 1.07 (95% confidence interval 0.85 to 1.37) after controlling for confounders, particularly pre-existing diabetes mellitus. There were also no statistically significant increases in any of the organ-specific malformations assessed after accounting for confounders. In the majority of pregnancies, statin treatment was initiated prior to pregnancy and was discontinued at some point in the first trimester when pregnancy was identified. Study limitations include reliance on physician coding to define the presence of a malformation, lack of control for certain confounders such as body mass index, use of prescription dispensing as verification for the use of a statin, and lack of information on non-live births.

### *Animal Data*

In female rats given 5, 15 and 50 mg/kg/day before mating and continuing through to gestation day 7 resulted in decreased fetal body weight (female pups) and delayed ossification at 50 mg/kg/day (10 times the human exposure at the MRHD dose of 40 mg/day based on AUC).

In pregnant rats given 2, 10 and 50 mg/kg/day of rosuvastatin from gestation day 7 through lactation day 21 (weaning), decreased pup survival occurred at 50 mg/kg/day (dose equivalent to 12 times the MRHD of 40 mg/day based body surface area).

In pregnant rabbits given 0.3, 1, and 3 mg/kg/day of rosuvastatin from gestation day 6 to day 18, decreased fetal viability and maternal mortality was observed at 3 mg/kg/day (dose equivalent to the MRHD of 40 mg/day based on body surface area).

Rosuvastatin crosses the placenta in rats and rabbits and is found in fetal tissue and amniotic fluid at 3% and 20%, respectively, of the maternal plasma concentration following a single 25 mg/kg oral gavage dose on gestation day 16 in rats. In rabbits, fetal tissue distribution was 25% of maternal plasma concentration after a single oral gavage dose of 1 mg/kg on gestation day 18.

## **8.2 Lactation**

### Risk Summary

Limited data from case reports in published literature indicate that rosuvastatin is present in human milk. There is no available information on the effects of the drug on the breastfed infant or the effects of the drug on milk production. Statins, including rosuvastatin, decrease cholesterol synthesis and possibly the synthesis of other

biologically active substances derived from cholesterol and may cause harm to the breastfed infant.

Because of the potential for serious adverse reactions in a breastfed infant, based on the mechanism of action, advise patients that breastfeeding is not recommended during treatment with rosuvastatin [see *Use in Specific Populations ( 8.1) and Clinical Pharmacology ( 12.1)*].

#### **8.4 Pediatric Use**

The safety and effectiveness of rosuvastatin as an adjunct to diet to reduce LDL-C have been established in pediatric patients 8 years of age and older with HeFH. Use of rosuvastatin for this indication is based on one 12-week controlled trial with a 40-week open-label extension period in 176 pediatric patients 10 years of age and older with HeFH and one 2-year open-label, uncontrolled trial in 175 pediatric patients 8 years of age and older with HeFH [see *Clinical Studies ( 14)*]. In the 1-year trial with a 12-week controlled phase, there was no detectable effect of rosuvastatin on growth, weight, BMI (body mass index), or sexual maturation in patients aged 10 to 17 years.

The safety and effectiveness of rosuvastatin as an adjunct to other LDL-C-lowering therapies to reduce LDL-C have been established in pediatric patients 7 years of age and older with HoFH. Use of rosuvastatin for this indication is based on a randomized, placebo-controlled, cross-over study in 14 pediatric patients 7 years of age and older with HoFH [see *Clinical Studies (14)*].

The safety and effectiveness of rosuvastatin have not been established in pediatric patients younger than 8 years of age with HeFH, younger than 7 years of age with HoFH, or in pediatric patients with other types of hyperlipidemia (other than HeFH or HoFH).

#### **8.5 Geriatric Use**

Of the total number of rosuvastatin-treated patients in clinical studies, 3159 (31%) were 65 years and older, and 698 (6.8%) were 75 years and older. No overall differences in safety or effectiveness were observed between these subjects and younger subjects.

Advanced age ( $\geq 65$  years) is a risk factor for rosuvastatin-associated myopathy and rhabdomyolysis. Dose selection for an elderly patient should be cautious, recognizing the greater frequency of decreased hepatic, renal, or cardiac function, and of concomitant disease or other drug therapy and the higher risk of myopathy. Monitor geriatric patients receiving rosuvastatin for the increased risk of myopathy [see *Warnings and Precautions ( 5.1)*].

#### **8.6 Renal Impairment**

Rosuvastatin exposure is not influenced by mild to moderate renal impairment (CLcr  $\geq 30$  mL/min/1.73 m<sup>2</sup>). Exposure to rosuvastatin is increased to a clinically significant extent in patients with severe renal impairment (CLcr  $< 30$  mL/min/1.73 m<sup>2</sup>) who are not receiving hemodialysis [see *Clinical Pharmacology ( 12.3)*].

Renal impairment is a risk factor for myopathy and rhabdomyolysis. Monitor all patients with renal impairment for development of myopathy. In patients with severe renal impairment not on hemodialysis, the recommended starting dosage is 5 mg daily and should not exceed 10 mg daily [see *Dosage and Administration ( 2.5) and Warnings and Precautions ( 5.1)*].

#### **8.7 Hepatic Impairment**

Rosuvastatin is contraindicated in patients with acute liver failure or decompensated cirrhosis. Chronic alcohol liver disease is known to increase rosuvastatin exposure. Patients who consume substantial quantities of alcohol and/or have a history of liver disease may be at increased risk for hepatic injury [see *Contraindications ( 4), Warning and Precautions ( 5.3) and Clinical Pharmacology ( 12.3)*].

## 8.8 Asian Patients

Pharmacokinetic studies have demonstrated an approximate 2-fold increase in median exposure to rosuvastatin in Asian subjects when compared with White controls. Adjust the rosuvastatin dosage in Asian patients [see *Dosage and Administration ( 2.4) and Clinical Pharmacology ( 12.3)*].

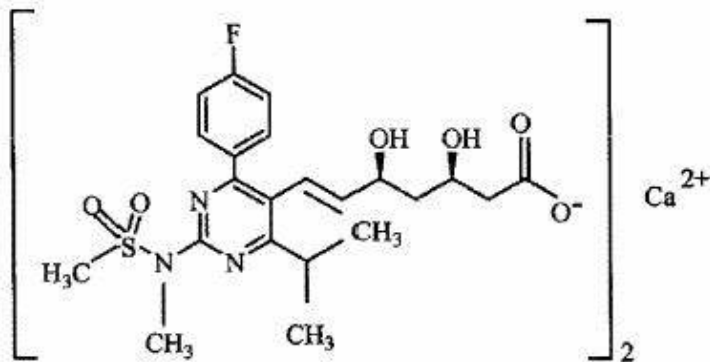
## 10 OVERDOSAGE

No specific antidotes for rosuvastatin are known. Hemodialysis does not significantly enhance clearance of rosuvastatin. Contact Poison Control (1-800-222-1222) for latest recommendations.

## 11 DESCRIPTION

Rosuvastatin calcium, USP is a 3-hydroxy-3-methylglutaryl coenzyme A (HMG CoA)-reductase inhibitor.

The chemical name for rosuvastatin calcium, USP is bis[(E)-7[4-(4-fluorophenyl)-6-isopropyl-2-(methyl(methylsulfonyl) amino) pyrimidin-5-yl]-(3R,5S)-3,5-dihydroxyhept-6-enoic acid] calcium salt with the following structural formula:



The empirical formula for rosuvastatin calcium, USP is (C<sub>22</sub>H<sub>27</sub>FN<sub>3</sub>O<sub>6</sub>S)<sub>2</sub>Ca and the molecular weight is 1001.14. Rosuvastatin calcium, USP is a white to off-white powder that is very slightly soluble in water, insoluble in methanol and ethanol. Rosuvastatin calcium, USP is a hydrophilic compound with a partition coefficient (octanol/water) of 0.13 at pH of 7.0.

Rosuvastatin Tablets, USP for oral use contain 5 mg, 10 mg, 20 mg, or 40 mg (equivalent to 5.2 mg, 10.4 mg, 20.8 mg, and 41.6 mg rosuvastatin calcium) and the following inactive ingredients: crospovidone, ferric oxide red, hypromellose, lactose monohydrate, magnesium stearate, microcrystalline cellulose, sodium bicarbonate, titanium dioxide and triacetin.

## 12 CLINICAL PHARMACOLOGY

### 12.1 Mechanism of Action

Rosuvastatin is an inhibitor of HMG-CoA reductase, the rate-limiting enzyme that converts 3-hydroxy-3-methylglutaryl coenzyme A to mevalonate, a precursor of cholesterol.

### 12.2 Pharmacodynamics

Inhibition of HMG-CoA reductase by rosuvastatin accelerates the expression of LDL-receptors, followed by the uptake of LDL-C from blood to the liver, leading to a decrease in plasma LDL-C and total cholesterol. Sustained inhibition of cholesterol synthesis in the liver also decreases levels of very-low-density lipoproteins. The maximum LDL-C reduction of rosuvastatin is usually achieved by 4 weeks and is maintained after that.

### 12.3 Pharmacokinetics

#### Absorption

In clinical pharmacology studies in man, peak plasma concentrations of rosuvastatin were reached 3 to 5 hours following oral dosing. Both  $C_{max}$  and AUC increased in approximate proportion to rosuvastatin dose. The absolute bioavailability of rosuvastatin is approximately 20%. The AUC of rosuvastatin does not differ following evening or morning drug administration.

#### *Effect of food*

Administration of rosuvastatin with food did not affect the AUC of rosuvastatin.

#### Distribution

Mean volume of distribution at steady-state of rosuvastatin is approximately 134 liters. Rosuvastatin is 88% bound to plasma proteins, mostly albumin. This binding is reversible and independent of plasma concentrations.

#### Elimination

#### *Metabolism*

Rosuvastatin is not extensively metabolized; approximately 10% of a radiolabeled dose is recovered as metabolite. The major metabolite is N-desmethyl rosuvastatin, which is formed principally by cytochrome P450 2C9, and *in vitro* studies have demonstrated that N-desmethyl rosuvastatin has approximately one-sixth to one-half the HMG-CoA reductase inhibitory activity of the parent compound. Overall, greater than 90% of active plasma HMG-CoA reductase inhibitory activity is accounted for by the parent compound.

#### *Excretion*

Following oral administration, rosuvastatin and its metabolites are primarily excreted in the feces (90%). After an intravenous dose, approximately 28% of total body clearance was via the renal route, and 72% by the hepatic route. The elimination half-life of rosuvastatin is approximately 19 hours.

#### Specific Populations

#### *Geriatric Patients*

There were no differences in plasma concentrations of rosuvastatin between the nonelderly and elderly populations (age  $\geq 65$  years).

#### *Pediatric Patients*



In a population pharmacokinetic analysis of two pediatric trials involving patients with heterozygous familial hypercholesterolemia 10 to 17 years of age and 8 to 17 years of age, respectively, rosuvastatin exposure appeared comparable to or lower than rosuvastatin exposure in adult patients.

#### *Male and Female Patients*

There were no differences in plasma concentrations of rosuvastatin between men and women.

#### *Racial or Ethnic Groups*

A population pharmacokinetic analysis revealed no clinically relevant differences in pharmacokinetics among Caucasian, Hispanic, and Black or Afro-Caribbean groups. However, pharmacokinetic studies, including one conducted in the US, have demonstrated an approximate 2-fold elevation in median exposure (AUC and  $C_{max}$ ) in Asian subjects when compared with a Caucasian control group.

#### *Patients with Renal Impairment*

Mild to moderate renal impairment ( $CL_{cr} \geq 30$  mL/min/1.73 m<sup>2</sup>) had no influence on plasma concentrations of rosuvastatin. However, plasma concentrations of rosuvastatin increased to a clinically significant extent (about 3-fold) in patients with severe renal impairment ( $CL_{cr} < 30$  mL/min/1.73 m<sup>2</sup>) not receiving hemodialysis compared with healthy subjects ( $CL_{cr} > 80$  mL/min/1.73 m<sup>2</sup>).

Steady-state plasma concentrations of rosuvastatin in patients on chronic hemodialysis were approximately 50% greater compared with healthy volunteer subjects with normal renal function.

#### *Patients with Hepatic Impairment*

In patients with chronic alcohol liver disease, plasma concentrations of rosuvastatin were modestly increased.

In patients with Child-Pugh A disease,  $C_{max}$  and AUC were increased by 60% and 5%, respectively, as compared with patients with normal liver function. In patients with Child-Pugh B disease,  $C_{max}$  and AUC were increased 100% and 21%, respectively, compared with patients with normal liver function.

#### Drug Interactions Studies

Rosuvastatin clearance is not dependent on metabolism by cytochrome P450 3A4 to a clinically significant extent.

Rosuvastatin is a substrate for certain transporter proteins including the hepatic uptake transporter organic anion-transporting polyprotein 1B1 (OATP1B1) and efflux transporter breast cancer resistance protein (BCRP). Concomitant administration of rosuvastatin with medications that are inhibitors of these transporter proteins (e.g. cyclosporine, certain HIV protease inhibitors) may result in increased rosuvastatin plasma concentrations [see *Dosage and Administration* ( 2.6) and *Drug Interactions* ( 7.1)].

**Table 8: Effect of Coadministered Drugs on Rosuvastatin Systemic Exposure**

Coadministered drug and dosing regimen	Rosuvastatin
	Mean Ratio (ratio with/without coadministered drug) No Effect=1

	<b>Dose (mg)</b>	<b>Change in AUC</b>	<b>Change in C<sub>max</sub></b>
Sofosbuvir/velpatasvir/voxilaprevir (400 mg-100 mg-100 mg) + Voxilaprevir (100 mg) once daily for 15 days	10 mg, single dose	7.39 <sup>2</sup> (6.68 to 8.18) <sup>3</sup>	18.88 <sup>2</sup> (16.23 to 21.96) <sup>3</sup>
Cyclosporine - stable dose required (75 mg to 200 mg BID)	10 mg, QD for 10 days	7.1 <sup>2</sup>	11 <sup>2</sup>
Darolutamide 600 mg BID, 5 days	5 mg, single dose	5.2 <sup>2</sup>	~5 <sup>2</sup>
Regorafenib 160 mg QD, 14 days	5 mg, single dose	3.8 <sup>2</sup>	4.6 <sup>2</sup>
Atazanavir/ritonavir combination 300 mg/100 mg QD for 8 days	10 mg	3.1 <sup>2</sup>	7 <sup>2</sup>
Simeprevir 150 mg QD, 7 days	10 mg, single dose	2.8 <sup>2</sup> (2.3 to 3.4) <sup>3</sup>	3.2 <sup>2</sup> (2.6 to 3.9) <sup>3</sup>
Velpatasvir 100 mg once daily	10 mg, single dose	2.69 <sup>2</sup> (2.46 to 2.94) <sup>3</sup>	2.61 <sup>2</sup> (2.32 to 2.92) <sup>3</sup>
Ombitasvir 25 mg/paritaprevir 150 mg/ritonavir 100mg + dasabuvir 400mg BID	5 mg, single dose	2.59 <sup>2</sup> (2.09 to 3.21) <sup>3</sup>	7.13 <sup>2</sup> (5.11 to 9.96) <sup>3</sup>
Teriflunomide	Not available	2.51 <sup>2</sup>	2.65 <sup>2</sup>
Enasidenib 100 mg QD, 28 days	10 mg, single dose	2.44	3.66
Elbasvir 50 mg/grazoprevir 200 mg once daily	10 mg single dose	2.26 <sup>2</sup> (1.89 to 2.69) <sup>3</sup>	5.49 <sup>2</sup> (4.29 to 7.04) <sup>3</sup>
Glecaprevir 400 mg/pibrentasvir 120 mg once daily	5 mg, once daily	2.15 <sup>2</sup> (1.88 to 2.46) <sup>3</sup>	5.62 <sup>2</sup> (4.80 to 6.59) <sup>3</sup>
Lopinavir/ritonavir combination 400 mg/100 mg BID for 17 days	20 mg, QD for 7 days	2.1 <sup>2</sup> (1.7 to 2.6) <sup>3</sup>	5 <sup>2</sup> (3.4 to 6.4) <sup>3</sup>
Capmatinib 400 mg BID	10 mg, single dose	2.08 <sup>2</sup> (1.56 to 2.76) <sup>3</sup>	3.04 <sup>2</sup> (2.36 to 3.92) <sup>3</sup>
Fostamatinib 100 mg BID	20 mg, single dose	1.96 <sup>2</sup> (1.77-2.15) <sup>3</sup>	1.88 <sup>2</sup> (1.69-2.09) <sup>3</sup>
Febuxostat 120 mg QD for 4 days	10 mg, single dose	1.9 <sup>2</sup> (1.5-2.5) <sup>3</sup>	2.1 <sup>2</sup> (1.8-2.6) <sup>3</sup>
Gemfibrozil 600 mg BID for 7 days	80 mg	1.9 <sup>2</sup> (1.6 to 2.2) <sup>3</sup>	2.2 <sup>2</sup> (1.8 to 2.7) <sup>3</sup>
Tafamidis 61 mg BID on Days 1 & 2, followed by QD on Days 3 to 9	10 mg	1.97 <sup>2</sup> (1.68-2.31) <sup>3</sup>	1.86 <sup>2</sup> (1.59-2.16) <sup>3</sup>
Eltrombopag 75 mg QD, 5 days	10 mg	1.6 (1.4 to 1.7) <sup>3</sup>	2 (1.8 to 2.3) <sup>3</sup>
Darunavir 600 mg/ritonavir 100 mg BID, 7 days	10 mg, QD for 7 days	1.5 (1 to 2.1) <sup>3</sup>	2.4 (1.6 to 3.6) <sup>3</sup>
Tipranavir/ritonavir combination 500 mg/200 mg BID for 11 days	10 mg	1.4 (1.2 to 1.6) <sup>3</sup>	2.2 (1.8 to 2.7) <sup>3</sup>
Dronedarone 400 mg BID	10 mg	1.4	
Itraconazole 200 mg QD, 5 days	10 mg or 80 mg	1.4 (1.2 to 1.6) <sup>3</sup> 1.3	1.4 (1.2 to 1.5) <sup>3</sup> 1.2

		(1.1 to 1.4) <sup>3</sup>	(0.9 to 1.4) <sup>3</sup>
Ezetimibe 10 mg QD, 14 days	10 mg, QD for 14 days	1.2 (0.9 to 1.6) <sup>3</sup>	1.2 (0.8 to 1.6) <sup>3</sup>
Fosamprenavir/ritonavir 700 mg/100 mg BID for 7 days	10 mg	1.1	1.5
Fenofibrate 67 mg TID for 7 days	10 mg	↔	1.2 (1.1 to 1.3) <sup>3</sup>
Rifampicin 450 mg QD, 7 days	20 mg	↔	
Aluminum & magnesium hydroxide combination antacid	40 mg 40 mg	0.5 <sup>2</sup> (0.4 to 0.5) <sup>3</sup>	0.5 <sup>2</sup> (0.4 to 0.6) <sup>3</sup>
Administered simultaneously		0.8	0.8
Administered 2 hours apart		(0.7 to 0.9) <sup>3</sup>	(0.7 to 1) <sup>3</sup>
Ketoconazole 200 mg BID for 7 days	80 mg	1 (0.8 to 1.2) <sup>3</sup>	1 (0.7 to 1.3) <sup>3</sup>
Fluconazole 200 mg QD for 11 days	80 mg	1.1 (1 to 1.3) <sup>3</sup>	1.1 (0.9 to 1.4) <sup>3</sup>
Erythromycin 500 mg QID for 7 days	80 mg	0.8 (0.7 to 0.9) <sup>3</sup>	0.7 (0.5 to 0.9) <sup>3</sup>

- QD= Once daily, BID= Twice daily, TID= Three times daily, QID= Four times daily
- <sup>1</sup>Single dose unless otherwise noted.
- <sup>2</sup>Clinically significant [see *Dosage and Administration ( 2) and Warnings and Precautions ( 5)*]
- <sup>3</sup>Mean ratio with 90% CI (with/without coadministered drug, e.g., 1= no change, 0.7 = 30% decrease, 11=11-fold increase in exposure)

**Table 9: Effect of Rosuvastatin Coadministration on Systemic Exposure to Other Drugs**

Rosuvastatin Dosage Regimen	Coadministered Drug		
		Mean Ratio (ratio with/without coadministered drug) No Effect=1	
	Name and Dose	Change in AUC	Change in C <sub>max</sub>
40 mg QD for 10 days	Warfarin <sup>1</sup> 25 mg single dose	R-Warfarin 1 (1 to 1.1) <sup>2</sup>	R-Warfarin 1 (0.9 to 1) <sup>2</sup>
		S-Warfarin 1.1 (1 to 1.1) <sup>2</sup>	S-Warfarin 1 (0.9 to 1.1) <sup>2</sup>
40 mg QD for 12 days	Digoxin 0.5 mg single dose	1 (0.9 to 1.2) <sup>2</sup>	1 (0.9 to 1.2) <sup>2</sup>
40 mg QD for 28 days	Oral Contraceptive (ethinyl estradiol 0.035 mg & norgestrel 0.180, 0.215 and 0.250 mg) QD for 21 Days	EE 1.3 (1.2 to 1.3) <sup>2</sup> NG 1.3 (1.3 to 1.4) <sup>2</sup>	EE 1.3 (1.2 to 1.3) <sup>2</sup> NG 1.2 (1.1 to 1.3) <sup>2</sup>

EE = ethinyl estradiol, NG = norgestrel, QD= Once daily

<sup>1</sup>Clinically significant pharmacodynamic effects [see *Drug Interactions* ( 7.3)]

<sup>2</sup>Mean ratio with 90% CI (with/without coadministered drug, e.g., 1= no change, 0.7=30% decrease, 11=11-fold increase in exposure)

## 12.5 Pharmacogenomics

Disposition of rosuvastatin, involves OATP1B1 and other transporter proteins. Higher plasma concentrations of rosuvastatin have been reported in very small groups of patients (n=3 to 5) who have two reduced function alleles of the gene that encodes OATP1B1 ( *SLCO1B1*521T > C). The frequency of this genotype (i.e., *SLCO1B1*521 C/C) is generally lower than 5% in most racial/ethnic groups. The impact of this polymorphism on efficacy and/or safety of rosuvastatin has not been clearly established.

## 13 NONCLINICAL TOXICOLOGY

### 13.1 Carcinogenesis, Mutagenesis, Impairment of Fertility

In a 104-week carcinogenicity study in rats at dose levels of 2, 20, 60, or 80 mg/kg/day by oral gavage, the incidence of uterine stromal polyps was significantly increased in females at 80 mg/kg/day at systemic exposure 20 times the human exposure at 40 mg/day based on AUC. Increased incidence of polyps was not seen at lower doses.

In a 107-week carcinogenicity study in mice given 10, 60, or 200 mg/kg/day by oral gavage, an increased incidence of hepatocellular adenoma/carcinoma was observed at 200 mg/kg/day at systemic exposures 20 times the human exposure at 40 mg/day based on AUC. An increased incidence of hepatocellular tumors was not seen at lower doses.

Rosuvastatin was not mutagenic or clastogenic with or without metabolic activation in the Ames test with *Salmonella typhimurium* and *Escherichia coli*, the mouse lymphoma assay, and the chromosomal aberration assay in Chinese hamster lung cells. Rosuvastatin was negative in the *in vivo* mouse micronucleus test.

In rat fertility studies with oral gavage doses of 5, 15, 50 mg/kg/day, males were treated for 9 weeks prior to and throughout mating and females were treated 2 weeks prior to mating and throughout mating until gestation day 7. No adverse effect on fertility was observed at 50 mg/kg/day (systemic exposures up to 10 times the human exposure at 40 mg/day based on AUC). In testicles of dogs treated with rosuvastatin at 30 mg/kg/day for one month, spermatidic giant cells were seen. Spermatidic giant cells were observed in monkeys after 6-month treatment at 30 mg/kg/day in addition to vacuolation of seminiferous tubular epithelium. Exposures in the dog were 20 times and in the monkey 10 times the human exposure at 40 mg/day based on body surface area. Similar findings have been seen with other drugs in this class.

## 14 CLINICAL STUDIES

### Primary Prevention of Cardiovascular Disease

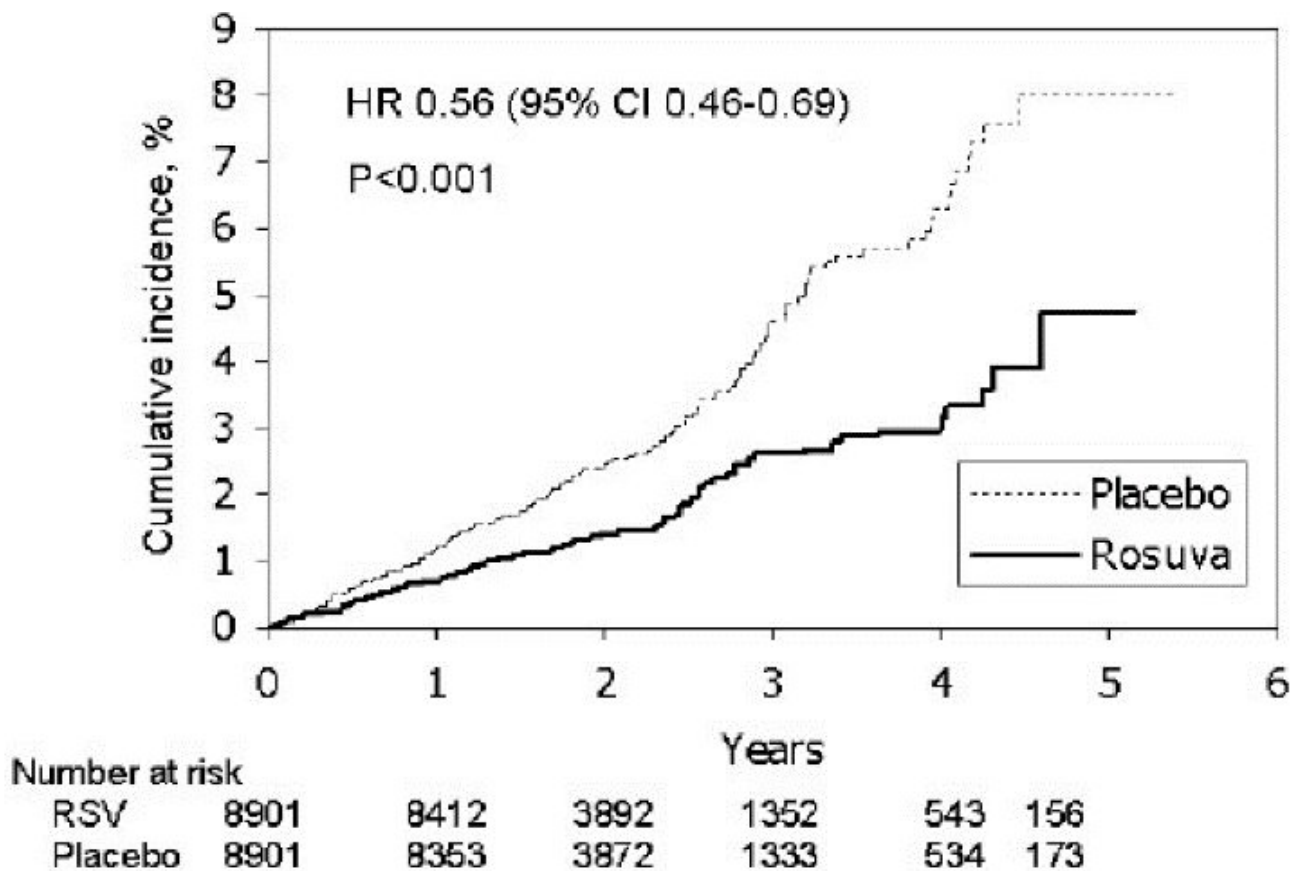
In the Justification for the Use of Statins in Primary Prevention: An Intervention Trial Evaluating Rosuvastatin (JUPITER) study, the effect of rosuvastatin on the occurrence of major cardiovascular (CV) disease events was assessed in 17,802 men (≥50 years) and women (≥60 years) who had no clinically evident cardiovascular disease, LDL-C levels <130 mg/dL and hsCRP levels ≥2 mg/L. The study population had an estimated baseline coronary heart disease risk of 11.6% over 10 years based on the Framingham risk criteria and included a high percentage of patients with additional risk factors such as

hypertension (58%), low HDL-C levels (23%), cigarette smoking (16%), or a family history of premature CHD (12%). Patients had a median baseline LDL-C of 108 mg/dL and hsCRP of 4.3 mg/L. Patients were randomly assigned to placebo (n=8901) or rosuvastatin 20 mg once daily (n=8901) and were followed for a mean duration of 2 years. The JUPITER study was stopped early by the Data Safety Monitoring Board due to meeting predefined stopping rules for efficacy in rosuvastatin -treated subjects.

The primary end point was a composite end point consisting of the time-to-first occurrence of any of the following major CV events: CV death, nonfatal myocardial infarction, nonfatal stroke, hospitalization for unstable angina or an arterial revascularization procedure.

Rosuvastatin significantly reduced the risk of major CV events (252 events in the placebo group vs. 142 events in the rosuvastatin group) with a statistically significant ( $p < 0.001$ ) relative risk reduction of 44% and absolute risk reduction of 1.2% (see Figure 1). The risk reduction for the primary end point was consistent across the following predefined subgroups: age, sex, race, smoking status, family history of premature CHD, body mass index, LDL-C, HDL-C, and hsCRP levels.

**Figure 1. Time to First Occurrence of Major Cardiovascular Events in JUPITER**



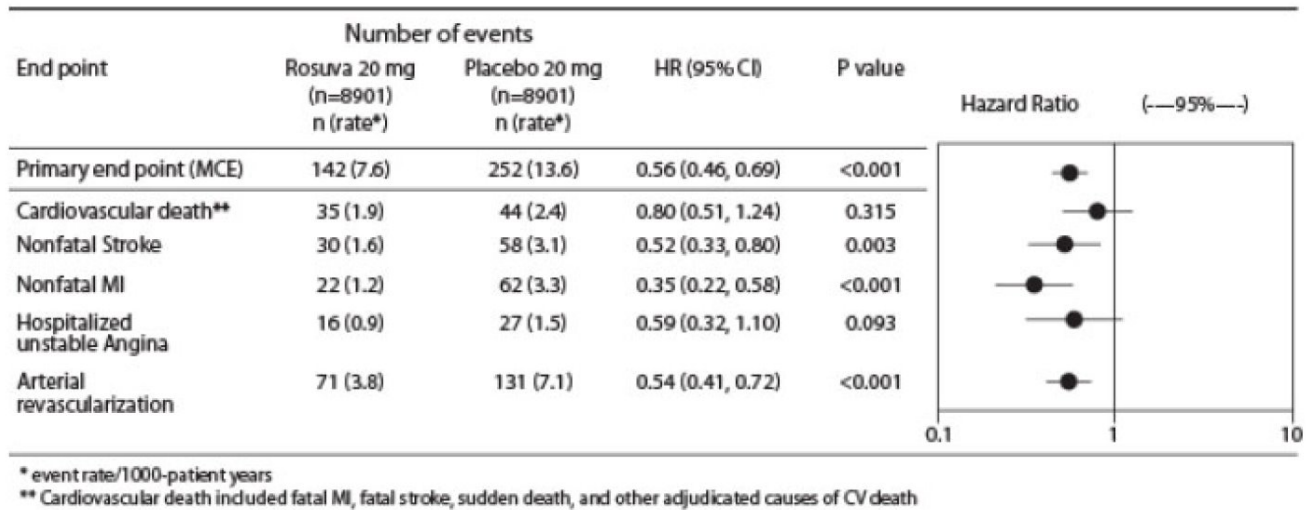
The individual components of the primary end point are presented in Figure 3. Rosuvastatin significantly reduced the risk of nonfatal myocardial infarction, nonfatal stroke, and arterial revascularization procedures. There were no significant treatment differences between the rosuvastatin and placebo groups for death due to cardiovascular causes or hospitalizations for unstable angina.

Rosuvastatin significantly reduced the risk of myocardial infarction (6 fatal events and 62 nonfatal events in placebo-treated subjects vs. 9 fatal events and 22 nonfatal events in

rosuvastatin-treated subjects) and the risk of stroke (6 fatal events and 58 nonfatal events in placebo-treated subjects vs. 3 fatal events and 30 nonfatal events in rosuvastatin-treated subjects).

In a post-hoc subgroup analysis of JUPITER subjects (rosuvastatin=725, placebo=680) with a hsCRP  $\geq 2$  mg/L and no other traditional risk factors (smoking, BP  $\geq 140/90$  or taking antihypertensives, low HDL-C) other than age, after adjustment for high HDL-C, there was no significant treatment benefit with rosuvastatin treatment.

**Figure 2. Major CV Events by Treatment Group in JUPITER**



At one year, rosuvastatin increased HDL-C and reduced LDL-C, hsCRP, total cholesterol and serum triglyceride levels ( $p < 0.001$  for all versus placebo).

### Primary Hyperlipidemia in Adults

Rosuvastatin reduces Total-C, LDL-C, ApoB, non-HDL-C, and TG, and increases HDL-C, in adult patients with hyperlipidemia and mixed dyslipidemia.

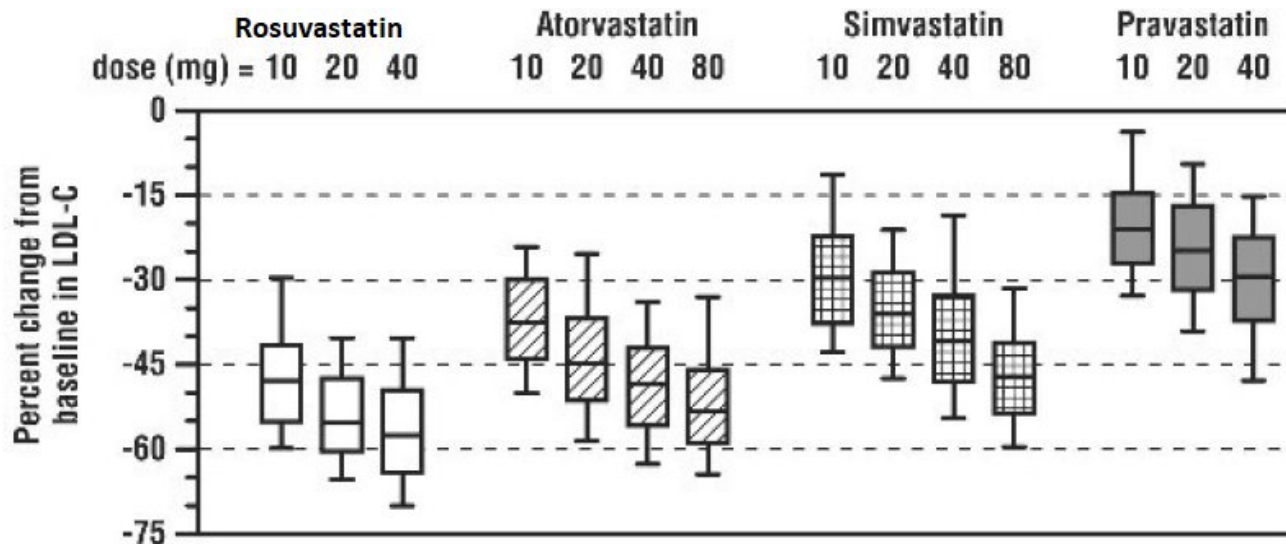
In a multicenter, double-blind, placebo-controlled study in patients with hyperlipidemia, rosuvastatin given as a single daily dose (5 to 40 mg) for 6 weeks significantly reduced Total-C, LDL-C, non-HDL-C, and ApoB, across the dose range (Table 10).

**Table 10: Lipid-modifying Effect of Rosuvastatin in Adult Patients with Hyperlipidemia (Adjusted Mean % Change from Baseline at Week 6)**

Dose	N	Total-C	LDL-C	Non-HDL-C	ApoB	TG	HDL-C
Placebo	13	-5	-7	-7	-3	-3	3
Rosuvastatin 5 mg	17	-33	-45	-44	-38	-35	13
Rosuvastatin 10 mg	17	-36	-52	-48	-42	-10	14
Rosuvastatin 20 mg	17	-40	-55	-51	-46	-23	8
Rosuvastatin 40 mg	18	-46	-63	-60	-54	-28	10

Rosuvastatin was compared with the statins (atorvastatin, simvastatin, and pravastatin) in a multicenter, open-label, dose-ranging study of 2,240 patients with hyperlipidemia or mixed dyslipidemia. After randomization, patients were treated for 6 weeks with a single daily dose of either rosuvastatin, atorvastatin, simvastatin, or pravastatin (Figure 3 and Table 11).

**Figure 3. Percent LDL-C Change by Dose of Rosuvastatin, Atorvastatin, Simvastatin, and Pravastatin at Week 6 in Adult Patients with Hyperlipidemia or Mixed Dyslipidemia**



Box plots are a representation of the 25th, 50th, and 75th percentile values, with whiskers representing the 10th and 90th percentile values. Mean baseline LDL-C: 189 mg/dL

**Table 11: Percent Change in LDL-C by Dose of Rosuvastatin, Atorvastatin, Simvastatin, and Pravastatin From Baseline to Week 6 (LS Mean <sup>1</sup>) in Adult Patients with Hyperlipidemia or Mixed Dyslipidemia (Sample Sizes Ranging from 156-167 Patients Per Group)**

	• Treatment Daily Dose			
• Treatment	• 10 mg	• 20 mg	• 40 mg	• 80 mg
• Rosuvastatin	• -46 <sup>2</sup>	• -52 <sup>3</sup>	• -55 <sup>4</sup>	• ---
• Atorvastatin	• -37	• -43	• -48	• -51
• Simvastatin	• -28	• -35	• -39	• -46
• Pravastatin	• -20	• -24	• -30	• ---

- <sup>1</sup>Corresponding standard errors are approximately 1
- <sup>2</sup>Rosuvastatin 10 mg reduced LDL-C significantly more than atorvastatin 10 mg; pravastatin 10 mg, 20 mg, and 40 mg; simvastatin 10 mg, 20 mg, and 40 mg. (p<0.002)
- <sup>3</sup>Rosuvastatin 20 mg reduced LDL-C significantly more than atorvastatin 20 mg and 40 mg; pravastatin 20 mg and 40 mg; simvastatin 20 mg, 40 mg, and 80 mg. (p<0.002)
- <sup>4</sup>Rosuvastatin 40 mg reduced LDL-C significantly more than atorvastatin 40 mg; pravastatin 40 mg; simvastatin 40 mg, and 80 mg. (p<0.002)

## Slowing of the Progression of Atherosclerosis

In the *Measuring Effects on Intima Media Thickness: an Evaluation Of Rosuvastatin 40 mg (METEOR)* study, the effect of therapy with rosuvastatin on carotid atherosclerosis was assessed by B-mode ultrasonography in patients with elevated LDL-C, at low risk (Framingham risk <10% over ten years) for symptomatic coronary artery disease and with subclinical atherosclerosis as evidenced by carotid intimal-medial thickness (cIMT). In this double-blind, placebo-controlled clinical study 984 adult patients were randomized (of whom 876 were analyzed) in a 5:2 ratio to rosuvastatin 40 mg or placebo once daily. Ultrasonograms of the carotid walls were used to determine the annualized rate of change per patient from baseline to two years in mean maximum cIMT of 12 measured segments. The estimated difference in the rate of change in the maximum cIMT analyzed over all 12 carotid artery sites between patients treated with rosuvastatin and placebo-treated patients was -0.0145 mm/year (95% CI -0.0196, - 0.0093; p<0.0001).

The annualized rate of change from baseline for the placebo group was +0.0131 mm/year (p<0.0001). The annualized rate of change from baseline for the group treated with rosuvastatin was -0.0014 mm/year (p=0.32).

At an individual patient level in the group treated with rosuvastatin, 52.1% of patients demonstrated an absence of disease progression (defined as a negative annualized rate of change), compared to 37.7% of patients in the placebo group.

## HeFH in Adults

In a study of adult patients with HeFH (baseline mean LDL of 291 mg/dL), patients were randomized to rosuvastatin 20 mg or atorvastatin 20 mg. The dose was increased at 6-week intervals. Significant LDL-C reductions from baseline were seen at each dose in both treatment groups (Table 12).

**Table 12: LDL-C Percent Change from Baseline**

		• <b>Rosuvastatin (n=435)</b> <b>LS Mean <sup>1</sup>(95% CI)</b>	• <b>Atorvastatin (n=187)</b> <b>LS</b> <b>Mean <sup>1</sup>(95% CI)</b>
1. Week 6	1. 20 mg	1. -47% (-49%, -46%)	1. -38% (-40%, -36%)
1. Week 12	1. 40 mg	1. -55% (-57%, -54%)	1. -47% (-49%, -45%)
1. Week 18	1. 80 mg	1. NA	1. -52% (-54%, -50%)

1. <sup>1</sup>LS Means are least square means adjusted for baseline LDL-C

## HeFH in Pediatric Patients

In a double-blind, randomized, multicenter, placebo-controlled, 12-week study, 176 (97 male and 79 female) children and adolescents with heterozygous familial hypercholesterolemia were randomized to rosuvastatin 5 mg, 10 mg or 20 mg or placebo daily. Patients ranged in age from 10 to 17 years (median age of 14 years) with approximately 30% of the patients 10 to 13 years and approximately 17%, 18%, 40%, and 25% at Tanner stages II, III, IV, and V, respectively. Females were at least 1 year postmenarche. Mean LDL-C at baseline was 233 mg/dL (range of 129 to 399). The 12-week double-blind phase was followed by a 40 week open label dose-titration phase, where all patients (n=173) received 5 mg, 10 mg or 20 mg rosuvastatin daily.

Rosuvastatin significantly reduced LDL-C (primary end point), total cholesterol and ApoB



levels at each dose compared to placebo. Results are shown in Table 13 below.

**Table 13: Lipid-Modifying Effects of Rosuvastatin in Pediatric Patients 10 to 17 years of Age with Heterozygous Familial Hypercholesterolemia (Least-Squares Mean Percent Change from Baseline To Week 12)**

Dose (mg)	N	LDL-C	HDL-C	Total-C	TG <sup>1</sup>	ApoB
Placebo	46	-1%	+7%	0%	-7%	-2%
5	42	-38%	+4% <sup>2</sup>	-30%	-13% <sup>2</sup>	-32%
10	44	-45%	+11% <sup>2</sup>	-34%	-15% <sup>2</sup>	-38%
20	44	-50%	+9% <sup>2</sup>	-39%	16% <sup>2</sup>	-41%

<sup>1</sup>Median percent change

<sup>2</sup>Difference from placebo not statistically significant

Rosuvastatin was also studied in a two-year open-label, uncontrolled, titration-to-goal trial that included 175 children and adolescents with heterozygous familial hypercholesterolemia who were 8 to 17 years old (79 boys and 96 girls). All patients had a documented genetic defect in the LDL receptor or in ApoB. Approximately 89% were White, 7% were Asian, 1% were Black, and fewer than 1% were Hispanic. Mean LDL-C at baseline was 236 mg/dL. Fifty-eight (33%) patients were prepubertal at baseline. The starting rosuvastatin dosage for all children and adolescents was 5 mg once daily. Children 8 to less than 10 years of age (n=41 at baseline) could titrate to a maximum dosage of 10 mg once daily, and children and adolescents 10 to 17 years of age could titrate to a maximum dosage of 20 mg once daily.

The reductions in LDL-C from baseline were generally consistent across age groups within the trial as well as with previous experience in both adult and pediatric controlled trials.

#### HoFH in Adult and Pediatric Patients

In an open-label, forced-titration study, HoFH patients (n=40, 8-63 years) were evaluated for their response to rosuvastatin 20 to 40 mg titrated at a 6-week interval. In the overall population, the mean LDL-C reduction from baseline was 22%. About one-third of the patients benefited from increasing their dose from 20 mg to 40 mg with further LDL-C lowering of greater than 6%. In the 27 patients with at least a 15% reduction in LDL-C, the mean LDL-C reduction was 30% (median 28% reduction). Among 13 patients with an LDL-C reduction of <15%, 3 had no change or an increase in LDL-C. Reductions in LDL-C of 15% or greater were observed in 3 of 5 patients with known receptor negative status.

#### HoFH in Pediatric Patients

Rosuvastatin was studied in a randomized, double-blind, placebo-controlled, multicenter, cross-over study in 14 pediatric patients with HoFH. The study included a 4-week dietary lead-in phase during which patients received rosuvastatin 10 mg daily, a cross-over phase that included two 6-week treatment periods with either rosuvastatin 20 mg or placebo in random order, followed by a 12-week open-label phase during which all patients received rosuvastatin 20 mg. Patients ranged in age from 7 to 15 years of age (median 11 years), 50% were male, 71% were White, 21% were Asian, 7% were Black, and no patients were of Hispanic ethnicity. Fifty percent were on apheresis therapy and 57% were taking ezetimibe. Patients who entered the study on apheresis therapy or ezetimibe continued the treatment throughout the entire study. Mean LDL-C at baseline was 416 mg/dL (range 152 to 716 mg/dL). A total of 13 patients completed both

treatment periods of the randomized cross-over phase; one patient withdrew consent due to inability to have blood drawn during the cross-over phase.

Rosuvastatin 20 mg significantly reduced LDL-C, total cholesterol, ApoB, and non- HDL-C compared to placebo (Table 14).

**Table 14: Lipid-modifying Effects of Rosuvastatin in Pediatric Patients 7 to 15 years of Age with Homozygous Familial Hypercholesterolemia After 6 Weeks**

	<b>Placebo (N=13)</b>	<b>Rosuvastatin 20 mg (N=13)</b>	<b>Percent difference (95% CI)</b>
LDL-C (mg/dL)	481	396	-22.3% (-33.5, -9.1) <sup>1</sup>
Total-C (mg/dL)	539	448	-20.1% (-29.7, -9.1) <sup>2</sup>
Non-HDL-C (mg/dL)	505	412	-22.9% (-33.7, -10.3) 2
ApoB (mg/dL)	268	235	-17.1% (-29.2, -2.9) <sup>3</sup>

% Difference estimates are based on transformations of the estimated mean difference in log LDL measurements between rosuvastatin and placebo using a mixed model adjusted for study period

<sup>1</sup>p=0.005, <sup>2</sup>p=0.003, <sup>3</sup>p=0.024

Primary Dysbetalipoproteinemia in Adults

In a randomized, multicenter, double-blind crossover study, 32 adult patients (27 with ε2/ε2 and 4 with apo E mutation [Arg145Cys] with primary dysbetalipoproteinemia entered a 6-week dietary lead-in period on the NCEP Therapeutic Lifestyle Change (TLC) diet. Following dietary lead-in, patients were randomized to a sequence of treatments for 6 weeks each: rosuvastatin 10 mg followed by rosuvastatin 20 mg or rosuvastatin 20 mg followed by rosuvastatin 10 mg. rosuvastatin reduced non-HDL-C (primary end point) and circulating remnant lipoprotein levels. Results are shown in the table below.

**Table 15: Lipid-modifying Effects of Rosuvastatin 10 mg and 20 mg in Adult Patients with Primary Dysbetalipoproteinemia (Type III hyperlipoproteinemia) After Six Weeks by Median Percent Change (95% CI) from Baseline (N=32)**

	<b>Median at Baseline (mg/dL)</b>	<b>Median percent change from baseline (95% CI) Rosuvastatin 10 mg</b>	<b>Median percent change from baseline (95% CI) Rosuvastatin 20 mg</b>
Total-C	342.5	-43.3 (-46.9,-37.5)	-47.6 (-51.6,-42.8)
Triglycerides	503.5	-40.1 (-44.9, -33.6)	-43 (-52.5, -33.1)
Non-HDL-C	294.5	-48.2 (-56.7, -45.6)	-56.4 (-61.4, -48.5)
VLDL-C + IDL-C	209.5	-46.8 (-53.7, -39.4)	-56.2 (-67.7, -43.7)
LDL-C	112.5	-54.4 (-59.1, -47.3)	-57.3 (-59.4, -52.1)
HDL-C	35.5	10.2 (1.9, 12.3)	11.2 (8.3, 20.5)
RLP-C	82	-56.4 (-67.1, -49)	-64.9 (-74, -56.6)
Apo-E	16	-42.9 (-46.3, -33.3)	-42.5 (-47.1, -35.6)

Hypertriglyceridemia in Adults

In a double-blind, placebo-controlled study in adult patients with baseline TG levels from

273 to 817 mg/dL, rosuvastatin given as a single daily dose (5 to 40 mg) over 6 weeks significantly reduced serum TG levels (Table 16).

**Table 16: Lipid-Modifying Effect of Rosuvastatin in Adult Patients with Primary Hypertriglyceridemia After Six Weeks by Median (Min, Max) Percent Change from Baseline to Week 6**

Dose	Placebo (n=26)	Rosuvastatin 5 mg (n=25)	Rosuvastatin 10 mg (n=23)	Rosuvastatin 20 mg (n=27)	Rosuvastatin 40 mg (n=25)
Triglycerides	1 (-40, 72)	-21 (-58, 38)	-37 (-65, 5)	-37 (-72, 11)	-43 (-80, -7)
Non-HDL-C	2 (-13, 19)	-29 (-43, -8)	-49 (-59, -20)	-43 (-74, 12)	-51 (-62, -6)
Total-C	1 (-13, 17)	-24 (-40, -4)	-40 (-51, -14)	-34 (-61, -11)	-40 (-51, -4)
LDL-C	5 (-30, 52)	-28 (-71, 2)	-45 (-59, 7)	-31 (-66, 34)	-43 (-61, -3)
HDL-C	-3 (-25, 18)	3 (-38, 33)	8 (-8, 24)	22 (-5, 50)	17 (-14, 63)

## 16 HOW SUPPLIED/STORAGE AND HANDLING

Rosuvastatin Tablets, USP are supplied as:

Strength	How Supplied	NDC	Tablet Description
10 mg	Boxes of 10x10 UD 100	63739-234-10	Pink colored, film-coated, circular tablets debossed with "G" on one side and "D" on the other side.
20 mg	Boxes of 10x10 UD 100	63739-138-10	Pink colored, film-coated, circular tablets debossed with "G" on one side and "O" on the other side.

### Storage

Store at controlled room temperature, 20°C to 25°C (68°F to 77°F); excursions permitted between 15°C and 30°C (59°F and 86°F) [see USP Controlled Room Temperature]. Protect from moisture.

## 17 PATIENT COUNSELING INFORMATION

Advise the patient to read the FDA-approved patient labeling (Patient Information).

### *Myopathy and Rhabdomyolysis*

Advise patients that rosuvastatin tablets may cause myopathy and rhabdomyolysis. Inform patients that the risk is also increased when taking certain types of medication and they should discuss all medication, both prescription and over the counter, with their healthcare provider. Instruct patients to promptly report any unexplained muscle pain, tenderness or weakness particularly if accompanied by malaise or fever [see *Warnings and Precautions ( 5.1)*, and *Drug Interactions ( 7.1)*].

### *Hepatic Dysfunction*

Inform patients that rosuvastatin tablets may cause liver enzyme elevations and possibly liver failure. Advise patients to promptly report fatigue, anorexia, right upper abdominal discomfort, dark urine or jaundice [see *Warnings and Precautions ( 5.3)*].

### *Increases in HbA1c and Fasting Serum Glucose Levels*

Inform patients that increases in HbA1c and fasting serum glucose levels may occur with rosuvastatin tablets. Encourage patients to optimize lifestyle measures, including regular exercise, maintaining a healthy body weight, and making healthy food choices [see *Warnings and Precautions ( 5.5)*].

### *Pregnancy*

Advise pregnant patients and patients who can become pregnant of the potential risk to a fetus. Advise patients to inform their healthcare provider of a known or suspected pregnancy to discuss if rosuvastatin tablets should be discontinued [see *Use in Specific Populations ( 8.1)*].

### *Lactation*

Advise patients that breastfeeding during treatment with rosuvastatin tablets are not recommended [see *Use in Specific Populations ( 8.2)*].

### *Concomitant Use of Antacids*

When taking rosuvastatin with an aluminum and magnesium hydroxide combination antacid, the antacid should be taken at least 2 hours after rosuvastatin administration [see *Drug Interactions (7.2)*].

### *Missed Doses*

If a dose is missed, advise patients not take an extra dose. Just resume the usual schedule [see *General Dosage and Administration Information (2.1)*].

Distributed by:

**McKesson Corporation dba SKY Packaging**

Memphis, TN 38141

Manufactured by:

**Glenmark Pharmaceuticals Limited**

Colvale-Bardez, Goa 403513, India.

June 2024

22087

## **PATIENT INFORMATION**

<b>PATIENT INFORMATION</b> <b>Rosuvastatin (roe-SOO-va-STAT-in)</b> <b>Tablets, USP</b>
Read this Patient Information carefully before you start taking rosuvastatin tablets and each time you get a refill. If you have any questions about rosuvastatin tablets, ask your doctor. Only your doctor can determine if rosuvastatin tablets are right for you.
<b>What are rosuvastatin tablets?</b> Rosuvastatin tablets are a prescription medicine that contains a cholesterol-lowering medicine called rosuvastatin.

- Rosuvastatin tablets are used to:
- reduce the risk of stroke, heart attack, and the need for procedures to improve blood flow to the heart called arterial revascularization in adults who do not have known heart disease but do have certain additional risk factors.
- Rosuvastatin tablets are used along with diet to:
- lower the level of low-density lipoprotein (LDL) cholesterol or “bad” cholesterol in adults with primary hyperlipidemia.
- slow the buildup of fatty deposits (plaque) in the walls of blood vessels.
- treat adults and children 8 years of age and older with high blood cholesterol due to heterozygous familial hypercholesterolemia (an inherited condition that causes high levels of LDL).
- along with other cholesterol lowering treatments or alone if such treatments are unavailable in adults and children 7 years of age and older with homozygous familial hypercholesterolemia (an inherited condition that causes high levels of LDL).
- treat adults with a type of high cholesterol called primary dysbetalipoproteinemia (type III hyperlipoproteinemia).
- lower the level of fat in your blood (triglycerides) in adults with hypertriglyceridemia.

The safety and effectiveness of rosuvastatin tablets has not been established in children younger than 8 years of age with heterozygous familial hypercholesterolemia or children younger than 7 years of age with homozygous familial hypercholesterolemia or in children with other types of hyperlipidemias (other than HeFH or HoFH).

### **Who should not take rosuvastatin tablets?**

#### **Do not take rosuvastatin tablets if you:**

- have liver problems.
- are allergic to rosuvastatin or any of the ingredients in rosuvastatin tablets. See the end of this leaflet for a complete list of ingredients in rosuvastatin tablets. Symptoms of allergic reactions include rash, itching, hives, and swelling.

### **What should I tell my doctor before and while taking rosuvastatin tablets?**

#### **Tell your doctor if you:**

- have unexplained muscle aches or weakness.
- have or have had kidney problems.
- have or have had liver problems.
- drink more than 2 glasses of alcohol daily.
- have thyroid problems.
- are 65 years of age or older.
- are of Asian descent.
- are pregnant or think you may be pregnant, or are planning to become pregnant. If you become pregnant while taking rosuvastatin tablets, call your healthcare provider right away to discuss your rosuvastatin tablets treatment.
- are breastfeeding. Rosuvastatin can pass into your breast milk. Breastfeeding is not recommended while taking rosuvastatin tablets.

**Tell your doctor about all the medicines you take**, including prescription and over-the-counter medicines, vitamins, and herbal supplements.

Taking rosuvastatin tablets with certain other medicines may affect each other causing side effects. Rosuvastatin tablets may affect the way other medicines work, and other medicines may affect how rosuvastatin tablets works.

Especially tell your doctor if you take:

- cyclosporine (a medicine for your immune system)
- gemfibrozil (a fibric acid medicine for lowering cholesterol)
- fostamatinib (a medicine used to treat low platelet counts)

- febuxostat (a medicine used to treat and prevent high blood levels of uric acid)
- teriflunomide (a medicine used to treat relapsing remitting multiple sclerosis)
- capmatinib (a medicine for the treatment of non-small cell lung cancer)
- tafamidis (used to treat cardiomyopathy [enlarged and thickened heart muscle])
- darolutamide (a medicine for the treatment of prostate cancer)
- regorafenib (a medicine used to treat cancer of the colon and rectum)
- enasidenib (a medicine used to treat acute myeloid leukemia)
- anti-viral medicines including certain HIV or hepatitis C virus drugs such as:
  - lopinavir, ritonavir, fosamprenavir, tipranavir, atazanavir, simeprevir
  - combination of
    - sofosbuvir/velpatasvir/voxilaprevir
    - dasabuvir/ombitasvir/paritaprevir/ritonavir
    - elbasvir/grazoprevir
    - sofosbuvir/velpatasvir
    - glecaprevir/pibrentasvir **and**
  - all other combinations with ledipasvir including ledipasvir/sofosbuvir
- certain anti-fungal medicines (such as itraconazole, ketoconazole and fluconazole)
- coumarin anticoagulants (medicines that prevent blood clots, such as warfarin)
- niacin or nicotinic acid
- fibric acid derivatives (such as fenofibrate)
- colchicine (a medicine used to treat gout)

Ask your doctor or pharmacist for a list of these medicines if you are not sure. Know the medicines you take. Keep a list of them to show your doctor and pharmacist when you get new medicine.

### **How should I take rosuvastatin tablets?**

- Take rosuvastatin tablets exactly as your doctor tells you to take it.
- Take rosuvastatin tablets, by mouth, 1 time each day. Swallow the tablet whole.
- Rosuvastatin tablets can be taken at any time of day, with or without food.
- **Do not** change your dose or stop rosuvastatin tablets without talking to your doctor, even if you are feeling well.
- Your doctor may do blood tests to check your cholesterol levels before and during your treatment with rosuvastatin tablets. Your doctor may change your dose of rosuvastatin tablets if needed.
- Your doctor may start you on a cholesterol lowering diet before giving you rosuvastatin tablets. Stay on this diet when you take rosuvastatin tablets.
- Wait at least 2 hours after taking rosuvastatin tablets to take an antacid that contains a combination of aluminum and magnesium hydroxide.
- If you miss a dose of rosuvastatin tablets, take your next dose at your normal scheduled time. **Do not take** an extradose of rosuvastatin tablets.
- If you take too much rosuvastatin tablets or overdose, call your doctor or go to the nearest hospital emergency room right away.

### **What are the possible side effects of rosuvastatin tablets?**

#### **Rosuvastatin tablets may cause serious side effects, including:**

- **Muscle pain, tenderness and weakness (myopathy).** Muscle problems, including muscle breakdown, can be serious in some people and rarely cause kidney damage that can lead to death. Tell your doctor right away if:
  - you have unexplained muscle pain, tenderness, or weakness, especially if you have a fever or feel more tired than usual, while you take rosuvastatin tablets.
  - you have muscle problems that do not go away even after your doctor has told you to stop taking rosuvastatin tablets. Your doctor may do further tests to diagnose the

cause of your muscle problems.

- Your chances of getting muscle problems are higher if you:
- are taking certain other medicines while you take rosuvastatin tablets
- are 65 years of age or older
- have thyroid problems (hypothyroidism) that are not controlled
- have kidney problems
- are taking higher doses of rosuvastatin tablets
- **Liver problems.**Your doctor may do blood tests to check your liver before you start taking rosuvastatin tablets and if you have symptoms of liver problems while you take rosuvastatin tablets. Call your doctor right away if you have any of the following symptoms of liver problems:
  - feel unusually tired or weak
  - loss of appetite
  - upper belly pain
  - dark urine
  - yellowing of your skin or the whites of your eyes
- **Protein and blood in the urine.**Rosuvastatin tablets may cause you to have protein and blood in your urine. If you develop protein or blood in your urine, your doctor may decrease your dose of rosuvastatin tablets.
- **Increase in blood sugar (glucose) levels.** Rosuvastatin tablets may cause an increase in your blood sugar levels.

The most common side effects may include headache, muscle aches and pains, abdominal pain, weakness, and nausea.

Tell your doctor if you have any side effect that bothers you or that does not go away.

For more information, ask your doctor or pharmacist.

Call your doctor for medical advice about side effects. You may report side effects to FDA at 1-800-FDA-1088.

#### **How should I store rosuvastatin tablets?**

- Store rosuvastatin tablets at room temperature, between 68°F to 77°F (20°C to 25°C) and in a dry place.
- Safely throw away medicine that is out of date or no longer needed.

#### **Keep rosuvastatin tablets and all medicines out of the reach of children.**

#### **General Information about the safe and effective use of rosuvastatin tablets**

Medicines are sometimes prescribed for purposes other than those listed in a Patient Information leaflet. Do not use rosuvastatin tablets for a condition for which it was not prescribed. Do not give rosuvastatin tablets to other people, even if they have the same medical condition you have. It may harm them.

You can ask your pharmacist or doctor for information about rosuvastatin tablets that is written for health professionals.

#### **What are the Ingredients in rosuvastatin tablets?**

**Active Ingredient:** rosuvastatin as rosuvastatin calcium, USP

**Inactive Ingredients:** crospovidone, ferric oxide red, hypromellose, lactose monohydrate, magnesium stearate, microcrystalline cellulose, sodium bicarbonate, titanium dioxide and triacetin.

Distributed by:

**McKesson Corporation dba SKY Packaging**

Memphis, TN 38141

Manufactured by:

**Glenmark Pharmaceuticals Limited**

Colvale-Bardez, Goa 403513, India.

June 2024

This Patient Information has been approved by the U.S. Food and Drug Administration.

Revised June 2024

22087

## PACKAGE/LABEL PRINCIPAL DISPLAY PANEL

Rosuvastatin Calcium Tablets, 10 mg



NDC 63739-234-10

**Rosuvastatin**  
**Tablets, USP 10 mg\***

UD 100 Tablets (10x10)



GTIN 10363739234106

LOT XXXXXXXXXX

EXP 2099-12-31

SN 12345678901234



NDC 63739-234-10

**Rosuvastatin**  
**Tablets, USP 10 mg\***

UD 100 Tablets (10x10)



(01)10363739234106

\*Each film-coated tablet contains rosuvastatin calcium, USP equivalent to 10 mg rosuvastatin.

**Usual Dosage:**

See accompanying Prescribing Information.

**WARNING:** As with all medications, keep out of the reach of children.

Store at 20°C to 25°C (68°F to 77°F) [see USP Controlled Room Temperature].

Protect from moisture.

**Distributed by:**

McKesson Corporation dba SKY Packaging  
Memphis, TN 38141

© 2003 McKesson Corporation

**Manufactured by:**

Glenmark Pharmaceuticals Limited  
Colvale-Bardez, Goa 403513, India

**Rx Only**

Product of India

91437-1

Iss. 07/24

## PACKAGE/LABEL PRINCIPAL DISPLAY PANEL

Rosuvastatin Calcium Tablets, 20 mg





NDC 63739-138-10

**Rosuvastatin**  
**Tablets, USP 20 mg\***  
 UD 100 Tablets (10x10)



GTIN 10363739138107  
 LOT XXXXXXXXXX  
 EXP 2099-12-31  
 SN 12345678901234



NDC 63739-138-10

**Rosuvastatin**  
**Tablets, USP 20 mg\***  
 UD 100 Tablets (10x10)



(01)10363739138107  
 \*Each film-coated tablet contains rosuvastatin calcium, USP equivalent to 20 mg rosuvastatin.

**Usual Dosage:**

See accompanying Prescribing Information.

**WARNING:** As with all medications, keep out of the reach of children.

Store at 20°C to 25°C (68°F to 77°F) [see USP Controlled Room Temperature].

Protect from moisture.

Distributed by:  
 McKesson Corporation dba SKY Packaging  
 Memphis, TN 38141  
 © 2003 McKesson Corporation

Manufactured by:  
 Glenmark Pharmaceuticals Limited  
 Colvale-Bardez, Goa 403513, India

**Rx Only**

Product of India 91420-1  
 Iss. 07/24

**ROSUVASTATIN CALCIUM**

rosuvastatin calcium tablet, film coated

**Product Information**

<b>Product Type</b>	HUMAN PRESCRIPTION DRUG	<b>Item Code (Source)</b>	NDC:63739-234(NDC:16714-989)
<b>Route of Administration</b>	ORAL		

**Active Ingredient/Active Moiety**

Ingredient Name	Basis of Strength	Strength
<b>ROSUVASTATIN CALCIUM</b> (UNII: 83MVU38M7Q) (ROSUVASTATIN - UNII:413KH5ZJ73)	ROSUVASTATIN	10 mg

**Inactive Ingredients**

Ingredient Name	Strength
<b>CROSPVIDONE (120 .MU.M)</b> (UNII: 68401960MK)	
<b>LACTOSE MONOHYDRATE</b> (UNII: EWQ57Q8I5X)	
<b>HYPROMELLOSE, UNSPECIFIED</b> (UNII: 3NXW29V3WO)	

<b>MAGNESIUM STEARATE</b> (UNII: 70097M6I30)				
<b>MICROCRYSTALLINE CELLULOSE</b> (UNII: OP1R32D61U)				
<b>SODIUM BICARBONATE</b> (UNII: 8MDF5V39QO)				
<b>TITANIUM DIOXIDE</b> (UNII: 15FIX9V2JP)				
<b>TRIACETIN</b> (UNII: XHX3C3X673)				
<b>FERRIC OXIDE RED</b> (UNII: 1K09F3G675)				
<b>Product Characteristics</b>				
<b>Color</b>	pink	<b>Score</b>	no score	
<b>Shape</b>	ROUND	<b>Size</b>	6mm	
<b>Flavor</b>		<b>Imprint Code</b>	G;D	
<b>Contains</b>				
<b>Packaging</b>				
<b>#</b>	<b>Item Code</b>	<b>Package Description</b>	<b>Marketing Start Date</b>	<b>Marketing End Date</b>
1	NDC:63739-234-10	10 in 1 BOX, UNIT-DOSE	07/17/2024	
1		10 in 1 BLISTER PACK; Type 0: Not a Combination Product		
<b>Marketing Information</b>				
<b>Marketing Category</b>	<b>Application Number or Monograph Citation</b>	<b>Marketing Start Date</b>	<b>Marketing End Date</b>	
ANDA	ANDA079172	06/27/2019		

<b>ROSUVASTATIN CALCIUM</b>				
rosuvastatin calcium tablet, film coated				
<b>Product Information</b>				
<b>Product Type</b>	HUMAN PRESCRIPTION DRUG	<b>Item Code (Source)</b>	NDC:63739-138(NDC:16714-990)	
<b>Route of Administration</b>	ORAL			
<b>Active Ingredient/Active Moiety</b>				
<b>Ingredient Name</b>			<b>Basis of Strength</b>	<b>Strength</b>
ROSUVASTATIN CALCIUM (UNII: 83MVU38M7Q) (ROSUVASTATIN - UNII:413KH5ZJ73)			ROSUVASTATIN	20 mg
<b>Inactive Ingredients</b>				
<b>Ingredient Name</b>				<b>Strength</b>
CROSPVIDONE (120 .MU.M) (UNII: 68401960MK)				
LACTOSE MONOHYDRATE (UNII: EWQ57Q8I5X)				
HYPROMELLOSE, UNSPECIFIED (UNII: 3NXW29V3WO)				
MAGNESIUM STEARATE (UNII: 70097M6I30)				

<b>MICROCRYSTALLINE CELLULOSE</b> (UNII: OP1R32D61U)				
<b>SODIUM BICARBONATE</b> (UNII: 8MDF5V39QO)				
<b>TITANIUM DIOXIDE</b> (UNII: 15FIX9V2JP)				
<b>TRIACETIN</b> (UNII: XHX3C3X673)				
<b>FERRIC OXIDE RED</b> (UNII: 1K09F3G675)				
<b>Product Characteristics</b>				
<b>Color</b>	pink	<b>Score</b>	no score	
<b>Shape</b>	ROUND	<b>Size</b>	7mm	
<b>Flavor</b>		<b>Imprint Code</b>	G;O	
<b>Contains</b>				
<b>Packaging</b>				
#	Item Code	Package Description	Marketing Start Date	Marketing End Date
1	NDC:63739-138-10	10 in 1 BOX, UNIT-DOSE	07/17/2024	
1		10 in 1 BLISTER PACK; Type 0: Not a Combination Product		
<b>Marketing Information</b>				
Marketing Category	Application Number or Monograph Citation	Marketing Start Date	Marketing End Date	
ANDA	ANDA079172	06/27/2019		

**Labeler** - McKesson Corporation dba SKY Packaging (140529962)

<b>Establishment</b>			
Name	Address	ID/FEI	Business Operations
Legacy Pharmaceutical Packaging, LLC		143213275	repack(63739-234, 63739-138) , relabel(63739-234, 63739-138)

Revised: 7/2024

McKesson Corporation dba SKY Packaging