

IMATINIB MESYLATE- imatinib tablet, film coated

Mylan Institutional Inc.

HIGHLIGHTS OF PRESCRIBING INFORMATION

These highlights do not include all the information needed to use IMATINIB MESYLATE TABLETS safely and effectively. See full prescribing information for IMATINIB MESYLATE TABLETS.

IMATINIB MESYLATE tablets, for oral use

Initial U.S. Approval: 2001

----- INDICATIONS AND USAGE -----

Imatinib mesylate tablets are a kinase inhibitor indicated for the treatment of:

- Newly diagnosed adult and pediatric patients with Philadelphia chromosome positive chronic myeloid leukemia (Ph+ CML) in chronic phase (1.1)
- Patients with Philadelphia chromosome positive chronic myeloid leukemia (Ph+ CML) in blast crisis (BC), accelerated phase (AP), or in chronic phase (CP) after failure of interferon-alpha therapy (1.2)
- Adult patients with relapsed or refractory Philadelphia chromosome positive acute lymphoblastic leukemia (Ph+ ALL) (1.3)
- Adult patients with myelodysplastic/myeloproliferative diseases (MDS/MPD) associated with PDGFR (platelet-derived growth factor receptor) gene re-arrangements as determined with an FDA-approved test (1.5)
- Adult patients with aggressive systemic mastocytosis (ASM) without the D816V c-Kit mutation as determined with an FDA-approved test or with c-Kit mutational status unknown (1.6)
- Adult patients with hypereosinophilic syndrome (HES) and/or chronic eosinophilic leukemia (CEL) who have the FIP1L1-PDGFR α fusion kinase (mutational analysis or FISH demonstration of CHIC2 allele deletion) and for patients with HES and/or CEL who are FIP1L1-PDGFR α fusion kinase negative or unknown (1.7)
- Adult patients with unresectable, recurrent and/or metastatic dermatofibrosarcoma protuberans (DFSP) (1.8)

----- DOSAGE AND ADMINISTRATION -----

- Adults with Ph+ CML CP (2.2): 400 mg/day
- Adults with Ph+ CML AP or BC (2.2): 600 mg/day
- Pediatrics with Ph+ CML CP (2.3): 340 mg/m²/day
- Adults with Ph+ ALL (2.4): 600 mg/day
- Adults with MDS/MPD (2.6): 400 mg/day
- Adults with ASM (2.7): 100 mg/day or 400 mg/day
- Adults with HES/CEL (2.8): 100 mg/day or 400 mg/day
- Adults with DFSP (2.9): 800 mg/day
- Patients with mild to moderate hepatic impairment (2.12): 400 mg/day
- Patients with severe hepatic impairment (2.12): 300 mg/day

All doses of imatinib mesylate tablets should be taken with a meal and a large glass of water. Doses of 400 mg or 600 mg should be administered once-daily, whereas a dose of 800 mg should be administered as 400 mg twice a day. Imatinib mesylate tablets can be dissolved in water or apple juice for patients having difficulty swallowing. Daily dosing of 800 mg and above should be accomplished using the 400 mg tablet to reduce exposure to iron.

----- DOSAGE FORMS AND STRENGTHS -----

Tablets (scored): 100 mg and 400 mg (3)

----- CONTRAINDICATIONS -----

None. (4)

----- WARNINGS AND PRECAUTIONS -----

- Edema and severe fluid retention have occurred. Weigh patients regularly and manage unexpected rapid weight gain by drug interruption and diuretics. (5.1, 6.1)
- Cytopenias, particularly anemia, neutropenia, and thrombocytopenia, have occurred. Manage with dose reduction, dose interruption, or discontinuation of treatment. Perform complete blood counts weekly for the first month, biweekly for the second month, and periodically thereafter. (5.2)
- Severe congestive heart failure and left ventricular dysfunction have been reported, particularly in patients with comorbidities and risk factors. Monitor and treat patients with cardiac disease or risk factors for cardiac failure. (5.3)
- Severe hepatotoxicity including fatalities may occur. Assess liver function before initiation of treatment and monthly

thereafter or as clinically indicated. Monitor liver function when combined with chemotherapy known to be associated with liver dysfunction. (5.4)

- Grade 3/4 hemorrhage has been reported in clinical studies in patients with newly diagnosed CML. (5.5)
- Gastrointestinal perforations, some fatal, have been reported. (5.6)
- Cardiogenic shock/left ventricular dysfunction has been associated with the initiation of imatinib mesylate tablets in patients with conditions associated with high eosinophil levels (e.g., HES, MDS/MPD and ASM). (5.7)
- Bullous dermatologic reactions (e.g., erythema multiforme and Stevens-Johnson syndrome) have been reported with the use of imatinib mesylate tablets. (5.8)
- Hypothyroidism has been reported in thyroidectomy patients undergoing levothyroxine replacement. Closely monitor TSH levels in such patients. (5.9)
- Fetal harm can occur when administered to a pregnant woman. Advise women of the potential harm to the fetus, and to avoid pregnancy when taking imatinib mesylate tablets. (5.10, 8.1)
- Growth retardation occurring in children and pre-adolescents receiving imatinib mesylate tablets has been reported. Close monitoring of growth in children under imatinib mesylate tablets treatment is recommended. (5.11, 6.2)
- Tumor lysis syndrome. Close monitoring is recommended. (5.12)
- Reports of motor vehicle accidents have been received in patients receiving imatinib mesylate tablets. Caution patients about driving a car or operating machinery. (5.13)
- Renal toxicity. A decline in renal function may occur in patients receiving imatinib mesylate tablets. Evaluate renal function at baseline and during therapy, with attention to risk factors for renal dysfunction. (5.14)

----- ADVERSE REACTIONS -----

The most frequently reported adverse reactions (greater than or equal to 30%) were edema, nausea, vomiting, muscle cramps, musculoskeletal pain, diarrhea, rash, fatigue and abdominal pain. (6.1)

To report SUSPECTED ADVERSE REACTIONS, contact Mylan at 1-877-446-3679 (1-877-4-INFO-RX) or FDA at 1-800-FDA-1088 or www.fda.gov/medwatch.

----- DRUG INTERACTIONS -----

- CYP3A4 inducers may decrease imatinib mesylate tablets C_{max} and area under curve (AUC). (2.12, 7.1, 12.3)
- CYP3A4 inhibitors may increase imatinib mesylate tablets C_{max} and AUC. (7.2, 12.3)
- Imatinib mesylate tablets are an inhibitor of CYP3A4 and CYP2D6 which may increase the C_{max} and AUC of other drugs. (7.3, 7.4, 12.3)
- Patients who require anticoagulation should receive low-molecular weight or standard heparin and not warfarin. (7.3)

See 17 for PATIENT COUNSELING INFORMATION.

Revised: 4/2020

FULL PRESCRIBING INFORMATION: CONTENTS*

1 INDICATIONS AND USAGE

- 1.1 Newly Diagnosed Philadelphia Positive Chronic Myeloid Leukemia (Ph+ CML)
- 1.2 Ph+ CML in Blast Crisis (BC), Accelerated Phase (AP) or Chronic Phase (CP) After Interferon-alpha (IFN) Therapy
- 1.3 Adult Patients with Ph+ Acute Lymphoblastic Leukemia (ALL)
- 1.5 Myelodysplastic/Myeloproliferative Diseases (MDS/MPD)
- 1.6 Aggressive Systemic Mastocytosis (ASM)
- 1.7 Hypereosinophilic Syndrome (HES) and/or Chronic Eosinophilic Leukemia (CEL)
- 1.8 Dermatofibrosarcoma Protuberans (DFSP)

2 DOSAGE AND ADMINISTRATION

- 2.1 Drug Administration
- 2.2 Adult Patients with Ph+ CML CP, AP, or BC
- 2.3 Pediatric Patients with Ph+ CML CP
- 2.4 Adult Patients with Ph+ ALL
- 2.6 Adult Patients with MDS/MPD
- 2.7 Adult Patients with ASM
- 2.8 Adult Patients with HES/CEL

- 2.9 Adult Patients with DFSP
- 2.12 Dose Modification Guidelines
- 2.13 Dose Adjustment for Hepatotoxicity and Non-Hematologic Adverse Reactions
- 2.14 Dose Adjustment for Hematologic Adverse Reactions

3 DOSAGE FORMS AND STRENGTHS

4 CONTRAINDICATIONS

5 WARNINGS AND PRECAUTIONS

- 5.1 Fluid Retention and Edema
- 5.2 Hematologic Toxicity
- 5.3 Congestive Heart Failure and Left Ventricular Dysfunction
- 5.4 Hepatotoxicity
- 5.5 Hemorrhage
- 5.6 Gastrointestinal Disorders
- 5.7 Hypereosinophilic Cardiac Toxicity
- 5.8 Dermatologic Toxicities
- 5.9 Hypothyroidism
- 5.10 Embryo-fetal Toxicity
- 5.11 Growth Retardation in Children and Adolescents
- 5.12 Tumor Lysis Syndrome
- 5.13 Impairments Related to Driving and Using Machinery
- 5.14 Renal Toxicity

6 ADVERSE REACTIONS

- 6.1 Clinical Trials Experience
- 6.2 Postmarketing Experience

7 DRUG INTERACTIONS

- 7.1 Agents Inducing CYP3A Metabolism
- 7.2 Agents Inhibiting CYP3A Metabolism
- 7.3 Interactions with Drugs Metabolized by CYP3A4
- 7.4 Interactions with Drugs Metabolized by CYP2D6

8 USE IN SPECIFIC POPULATIONS

- 8.1 Pregnancy
- 8.2 Lactation
- 8.3 Females and Males of Reproductive Potential
- 8.4 Pediatric Use
- 8.5 Geriatric Use
- 8.6 Hepatic Impairment
- 8.7 Renal Impairment

10 OVERDOSAGE

11 DESCRIPTION

12 CLINICAL PHARMACOLOGY

- 12.1 Mechanism of Action
- 12.3 Pharmacokinetics

13 NONCLINICAL TOXICOLOGY

- 13.1 Carcinogenesis, Mutagenesis, Impairment of Fertility
- 13.2 Animal Toxicology and/or Pharmacology

14 CLINICAL STUDIES

- 14.1 Chronic Myeloid Leukemia
- 14.2 Pediatric CML
- 14.3 Acute Lymphoblastic Leukemia
- 14.5 Myelodysplastic/Myeloproliferative Diseases
- 14.6 Aggressive Systemic Mastocytosis
- 14.7 Hypereosinophilic Syndrome/Chronic Eosinophilic Leukemia
- 14.8 Dermatofibrosarcoma Protuberans

15 REFERENCES

16 HOW SUPPLIED/STORAGE AND HANDLING

17 PATIENT COUNSELING INFORMATION

* Sections or subsections omitted from the full prescribing information are not listed.

FULL PRESCRIBING INFORMATION

1 INDICATIONS AND USAGE

1.1 Newly Diagnosed Philadelphia Positive Chronic Myeloid Leukemia (Ph+ CML)

Newly diagnosed adult and pediatric patients with Philadelphia chromosome positive chronic myeloid leukemia (Ph+ CML) in chronic phase.

1.2 Ph+ CML in Blast Crisis (BC), Accelerated Phase (AP) or Chronic Phase (CP) After Interferon-alpha (IFN) Therapy

Patients with Philadelphia chromosome positive chronic myeloid leukemia in blast crisis, accelerated phase, or in chronic phase after failure of interferon-alpha therapy.

1.3 Adult Patients with Ph+ Acute Lymphoblastic Leukemia (ALL)

Adult patients with relapsed or refractory Philadelphia chromosome positive acute lymphoblastic leukemia (Ph+ ALL).

1.5 Myelodysplastic/Myeloproliferative Diseases (MDS/MPD)

Adult patients with myelodysplastic/myeloproliferative diseases associated with PDGFR (platelet-derived growth factor receptor) gene re-arrangements as determined with an FDA-approved test [see *Dosage and Administration (2.6)*].

1.6 Aggressive Systemic Mastocytosis (ASM)

Adult patients with aggressive systemic mastocytosis without the D816V c-Kit mutation as determined with an FDA-approved test [see *Dosage and Administration (2.7)*] or with c-Kit mutational status unknown.

1.7 Hypereosinophilic Syndrome (HES) and/or Chronic Eosinophilic Leukemia (CEL)

Adult patients with hypereosinophilic syndrome and/or chronic eosinophilic leukemia who have the FIP1L1-PDGFR α fusion kinase (mutational analysis or FISH demonstration of CHIC2 allele deletion) and for patients with HES and/or CEL who are FIP1L1-PDGFR α fusion kinase negative or unknown.

1.8 Dermatofibrosarcoma Protuberans (DFSP)

Adult patients with unresectable, recurrent and/or metastatic dermatofibrosarcoma protuberans.

2 DOSAGE AND ADMINISTRATION

2.1 Drug Administration

The prescribed dose should be administered orally, with a meal and a large glass of water. Doses of 400 mg or 600 mg should be administered once-daily, whereas a dose of 800 mg should be administered as 400 mg twice a day.

For patients unable to swallow the film-coated tablets, the tablets may be dispersed in a glass of water or apple juice. The required number of tablets should be placed in the appropriate volume of beverage (approximately 50 mL for a 100 mg tablet, and 200 mL for a 400 mg tablet) and stirred with a spoon. The suspension should be administered immediately after complete disintegration of the tablet(s).

For daily dosing of 800 mg and above, dosing should be accomplished using the 400 mg tablet to reduce exposure to iron.

Treatment may be continued as long as there is no evidence of progressive disease or unacceptable toxicity.

2.2 Adult Patients with Ph+ CML CP, AP, or BC

The recommended dose of imatinib mesylate tablets is 400 mg/day for adult patients in chronic phase CML and 600 mg/day for adult patients in accelerated phase or blast crisis.

In CML, a dose increase from 400 mg to 600 mg in adult patients with chronic phase disease, or from 600 mg to 800 mg (given as 400 mg twice-daily) in adult patients in accelerated phase or blast crisis may be considered in the absence of severe adverse drug reaction and severe non-leukemia related neutropenia or thrombocytopenia in the following circumstances: disease progression (at any time), failure to achieve a satisfactory hematologic response after at least 3 months of treatment, failure to achieve a cytogenetic response after 6 to 12 months of treatment, or loss of a previously achieved hematologic or cytogenetic response.

2.3 Pediatric Patients with Ph+ CML CP

The recommended dose of imatinib mesylate tablets for children with newly diagnosed Ph+ CML is 340 mg/m²/day (not to exceed 600 mg). Imatinib mesylate tablets treatment can be given as a once-daily dose or the daily dose may be split into two - one portion dosed in the morning and one portion in the evening. There is no experience with imatinib mesylate tablets treatment in children under 1 year of age.

2.4 Adult Patients with Ph+ ALL

The recommended dose of imatinib mesylate tablets is 600 mg/day for adult patients with relapsed/refractory Ph+ ALL.

2.6 Adult Patients with MDS/MPD

Determine PDGFRb gene re-arrangements status prior to initiating treatment. Information on FDA-approved tests for the detection of PDGFRb re-arrangements is available at <http://www.fda.gov/companiondiagnostics>.

The recommended dose of imatinib mesylate tablets is 400 mg/day for adult patients with MDS/MPD.

2.7 Adult Patients with ASM

Determine D816V c-Kit mutation status prior to initiating treatment. Information on FDA-approved test for the detection of D816V c-Kit mutation is available at <http://www.fda.gov/companiondiagnostics>.

The recommended dose of imatinib mesylate tablets is 400 mg/day for adult patients with ASM without the D816V c-Kit mutation. If c-Kit mutational status is not known or unavailable, treatment with imatinib mesylate tablets 400 mg/day may be considered for patients with ASM not responding satisfactorily to other therapies. For patients with ASM associated with eosinophilia, a clonal hematological disease related to the fusion kinase FIP1L1-PDGFR α , a starting dose of 100 mg/day is recommended. Dose increase from 100 mg to 400 mg for these patients may be considered in the absence of adverse drug reactions if assessments demonstrate an insufficient response to therapy.

2.8 Adult Patients with HES/CEL

The recommended dose of imatinib mesylate tablets is 400 mg/day for adult patients with HES/CEL. For

HES/CEL patients with demonstrated FIP1L1-PDGFR α fusion kinase, a starting dose of 100 mg/day is recommended. Dose increase from 100 mg to 400 mg for these patients may be considered in the absence of adverse drug reactions if assessments demonstrate an insufficient response to therapy.

2.9 Adult Patients with DFSP

The recommended dose of imatinib mesylate tablets is 800 mg/day for adult patients with DFSP.

2.12 Dose Modification Guidelines

Concomitant Strong CYP3A4 Inducers

The use of concomitant strong CYP3A4 inducers should be avoided (e.g., dexamethasone, phenytoin, carbamazepine, rifampin, rifabutin, rifampacin, phenobarbital). If patients must be coadministered a strong CYP3A4 inducer, based on pharmacokinetic studies, the dosage of imatinib mesylate tablets should be increased by at least 50%, and clinical response should be carefully monitored [see *Drug Interactions (7.1)*].

Hepatic Impairment

Patients with mild and moderate hepatic impairment do not require a dose adjustment and should be treated per the recommended dose. A 25% decrease in the recommended dose should be used for patients with severe hepatic impairment [see *Use in Specific Populations (8.6)*].

Renal Impairment

Patients with moderate renal impairment (CrCL = 20-39 mL/min) should receive a 50% decrease in the recommended starting dose and future doses can be increased as tolerated. Doses greater than 600 mg are not recommended in patients with mild renal impairment (CrCL = 40-59 mL/min). For patients with moderate renal impairment doses greater than 400 mg are not recommended.

Imatinib should be used with caution in patients with severe renal impairment. A dose of 100 mg/day was tolerated in two patients with severe renal impairment [see *Warnings and Precautions (5.3)*, *Use in Specific Populations (8.7)*].

2.13 Dose Adjustment for Hepatotoxicity and Non-Hematologic Adverse Reactions

If elevations in bilirubin greater than 3 times the institutional upper limit of normal (IULN) or in liver transaminases greater than 5 times the IULN occur, imatinib mesylate tablets should be withheld until bilirubin levels have returned to less than 1.5 times the IULN and transaminase levels to less than 2.5 times the IULN. In adults, treatment with imatinib mesylate tablets may then be continued at a reduced daily dose (i.e., 400 mg to 300 mg, 600 mg to 400 mg or 800 mg to 600 mg). In children, daily doses can be reduced under the same circumstances from 340 mg/m²/day to 260 mg/m²/day.

If a severe non-hematologic adverse reaction develops (such as severe hepatotoxicity or severe fluid retention), imatinib mesylate tablets should be withheld until the event has resolved. Thereafter, treatment can be resumed as appropriate depending on the initial severity of the event.

2.14 Dose Adjustment for Hematologic Adverse Reactions

Dose reduction or treatment interruptions for severe neutropenia and thrombocytopenia are recommended as indicated in Table 1.

Table 1: Dose Adjustments for Neutropenia and Thrombocytopenia

ASM associated with eosinophilia (starting dose 100 mg)	ANC * less than 1.0 x 10 ⁹ /L and/or platelets less than	1. Stop imatinib mesylate tablets until ANC greater than or equal to 1.5
---	--	--

	50 x 10 ⁹ /L	x 10 ⁹ /L and platelets greater than or equal to 75 x 10 ⁹ /L 2. Resume treatment with imatinib mesylate tablets at previous dose (i.e., dose before severe adverse reaction)
HES/CEL with FIP1L1-PDGFR α fusion kinase (starting dose 100 mg)	ANC less than 1.0 x 10 ⁹ /L and/or platelets less than 50 x 10 ⁹ /L	1. Stop imatinib mesylate tablets until ANC greater than or equal to 1.5 x 10 ⁹ /L and platelets greater than or equal to 75 x 10 ⁹ /L 2. Resume treatment with imatinib mesylate tablets at previous dose (i.e., dose before severe adverse reaction)
Chronic Phase CML (starting dose 400 mg) MDS/MPD, ASM and HES/CEL (starting dose 400 mg)	ANC less than 1.0 x 10 ⁹ /L and/or platelets less than 50 x 10 ⁹ /L	1. Stop imatinib mesylate tablets until ANC greater than or equal to 1.5 x 10 ⁹ /L and platelets greater than or equal to 75 x 10 ⁹ /L 2. Resume treatment with imatinib mesylate tablets at the original starting dose of 400 mg 3. If recurrence of ANC less than 1.0 x 10 ⁹ /L and/or platelets less than 50 x 10 ⁹ /L, repeat step 1 and resume imatinib mesylate tablets at a reduced dose of 300 mg
Ph+ CML: Accelerated Phase and Blast Crisis (starting dose 600 mg) Ph+ ALL (starting dose 600 mg)	ANC less than 0.5 x 10 ⁹ /L and/or	1. Check if cytopenia is related to leukemia (marrow

	platelets less than $10 \times 10^9/L$	aspirate or biopsy) 2. If cytopenia is unrelated to leukemia, reduce dose of imatinib mesylate tablets to 400 mg 3. If cytopenia persists 2 weeks, reduce further to 300 mg 4. If cytopenia persists 4 weeks and is still unrelated to leukemia, stop imatinib mesylate tablets until ANC greater than or equal to $1 \times 10^9/L$ and platelets greater than or equal to $20 \times 10^9/L$ and then resume treatment at 300 mg
DFSP (starting dose 800 mg)	ANC less than $1.0 \times 10^9/L$ and/or platelets less than $50 \times 10^9/L$	1. Stop imatinib mesylate tablets until ANC greater than or equal to $1.5 \times 10^9/L$ and platelets greater than or equal to $75 \times 10^9/L$ 2. Resume treatment with imatinib mesylate tablets at 600 mg 3. In the event of recurrence of ANC less than $1.0 \times 10^9/L$ and/or platelets less than $50 \times 10^9/L$, repeat step 1 and resume imatinib mesylate tablets at reduced dose of 400 mg
Pediatric newly diagnosed chronic phase CML (starting dose 340 mg/m^2)	ANC less than $1.0 \times 10^9/L$ and/or	1. Stop imatinib mesylate tablets until ANC greater

	platelets less than 50 x 10 ⁹ /L	than or equal to 1.5 x 10 ⁹ /L and platelets greater than or equal to 75 x 10 ⁹ /L 2. Resume treatment with imatinib mesylate tablets at previous dose (i.e., dose before severe adverse reaction) 3. In the event of recurrence of ANC less than 1.0 x 10 ⁹ /L and/or platelets less than 50 x 10 ⁹ /L, repeat step 1 and resume imatinib mesylate tablets at reduced dose of 260 mg/m ²
--	--	--

* ANC = absolute neutrophil count

3 DOSAGE FORMS AND STRENGTHS

Imatinib Mesylate Tablets are available containing imatinib mesylate equivalent to 100 mg or 400 mg of imatinib.

- The 100 mg tablets are brown-orange, film-coated, round, scored tablets debossed with **M** on one side of the tablet and **I** above the score and **100** below the score on the other side.
- The 400 mg tablets are brown-orange, film-coated, oval, scored tablets debossed with **MYLAN** on one side of the tablet and **I** on the left of the score and **400** on the right of the score on the other side.

4 CONTRAINDICATIONS

None.

5 WARNINGS AND PRECAUTIONS

5.1 Fluid Retention and Edema

Imatinib mesylate is often associated with edema and occasionally serious fluid retention [see *Adverse Reactions (6.1)*]. Weigh and monitor patients regularly for signs and symptoms of fluid retention. Investigate unexpected rapid weight gain carefully and provide appropriate treatment. The probability of edema was increased with higher imatinib mesylate dose and age greater than 65 years in the CML studies. Severe superficial edema was reported in 1.5% of newly diagnosed CML patients taking imatinib mesylate, and in 2%-6% of other adult CML patients taking imatinib mesylate. In addition, other severe fluid retention (e.g., pleural effusion, pericardial effusion, pulmonary edema, and ascites) reactions were reported in 1.3% of newly diagnosed CML patients taking imatinib mesylate, and in 2%-

6% of other adult CML patients taking imatinib mesylate. In a randomized trial in patients with newly diagnosed Ph+ CML in chronic phase comparing imatinib mesylate and nilotinib, severe (Grade 3 or 4) fluid retention occurred in 2.5% of patients receiving imatinib mesylate and in 3.9% of patients receiving nilotinib 300 mg twice-daily. Effusions (including pleural effusion, pericardial effusion, ascites) or pulmonary edema were observed in 2.1% (none were Grade 3 or 4) of patients in the imatinib mesylate arm and 2.2% (0.7% Grade 3 or 4) of patients in the nilotinib 300 mg twice-daily arm.

5.2 Hematologic Toxicity

Treatment with imatinib mesylate is associated with anemia, neutropenia, and thrombocytopenia. Perform complete blood counts weekly for the first month, biweekly for the second month, and periodically thereafter as clinically indicated (for example, every 2 to 3 months). In CML, the occurrence of these cytopenias is dependent on the stage of disease and is more frequent in patients with accelerated phase CML or blast crisis than in patients with chronic phase CML. In pediatric CML patients the most frequent toxicities observed were Grade 3 or 4 cytopenias including neutropenia, thrombocytopenia and anemia. These generally occur within the first several months of therapy [*see Dosage and Administration (2.14)*].

5.3 Congestive Heart Failure and Left Ventricular Dysfunction

Congestive heart failure and left ventricular dysfunction have been reported in patients taking imatinib mesylate. Cardiac adverse reactions were more frequent in patients with advanced age or co-morbidities including previous medical history of cardiac disease. In an international randomized Phase 3 study in 1,106 patients with newly diagnosed Ph+ CML in chronic phase, severe cardiac failure and left ventricular dysfunction were observed in 0.7% of patients taking imatinib mesylate compared to 0.9% of patients taking IFN+Ara-C. In another randomized trial with newly diagnosed Ph+ CML patients in chronic phase that compared imatinib mesylate and nilotinib, cardiac failure was observed in 1.1% of patients in the imatinib mesylate arm and 2.2% of patients in the nilotinib 300 mg twice-daily arm and severe (Grade 3 or 4) cardiac failure occurred in 0.7% of patients in each group. Carefully monitor patients with cardiac disease or risk factors for cardiac or history of renal failure. Evaluate and treat any patient with signs or symptoms consistent with cardiac or renal failure.

5.4 Hepatotoxicity

Hepatotoxicity, occasionally severe, may occur with imatinib mesylate [*see Adverse Reactions (6.1)*]. Cases of fatal liver failure and severe liver injury requiring liver transplants have been reported with both short-term and long-term use of imatinib mesylate. Monitor liver function (transaminases, bilirubin, and alkaline phosphatase) before initiation of treatment and monthly, or as clinically indicated. Manage laboratory abnormalities with imatinib mesylate interruption and/or dose reduction [*see Dosage and Administration (2.13)*]. When imatinib mesylate is combined with chemotherapy, liver toxicity in the form of transaminase elevation and hyperbilirubinemia has been observed. Additionally, there have been reports of acute liver failure. Monitoring of hepatic function is recommended.

5.5 Hemorrhage

In a trial of imatinib mesylate versus IFN+Ara-C in patients with the newly diagnosed CML, 1.8% of patients had Grade 3/4 hemorrhage. In a randomized trial in patients with newly diagnosed Ph+ CML in chronic phase comparing imatinib mesylate and nilotinib, GI hemorrhage occurred in 1.4% of patients in the imatinib mesylate arm, and in 2.9% of patients in the nilotinib 300 mg twice-daily arm. None of these events were Grade 3 or 4 in the imatinib mesylate arm; 0.7% were Grade 3 or 4 in the nilotinib 300 mg twice-daily arm. In addition, gastric antral vascular ectasia has been reported in postmarketing experience.

5.6 Gastrointestinal Disorders

Imatinib mesylate is sometimes associated with GI irritation. Imatinib mesylate tablets should be taken

with food and a large glass of water to minimize this problem. There have been rare reports, including fatalities, of gastrointestinal perforation.

5.7 Hypereosinophilic Cardiac Toxicity

In patients with hypereosinophilic syndrome with occult infiltration of HES cells within the myocardium, cases of cardiogenic shock/left ventricular dysfunction have been associated with HES cell degranulation upon the initiation of imatinib mesylate therapy. The condition was reported to be reversible with the administration of systemic steroids, circulatory support measures and temporarily withholding imatinib mesylate.

Myelodysplastic/myeloproliferative disease and systemic mastocytosis may be associated with high eosinophil levels. Consider performing an echocardiogram and determining serum troponin in patients with HES/CEL, and in patients with MDS/MPD or ASM associated with high eosinophil levels. If either is abnormal, consider prophylactic use of systemic steroids (1-2 mg/kg) for one to two weeks concomitantly with imatinib mesylate at the initiation of therapy.

5.8 Dermatologic Toxicities

Bullous dermatologic reactions, including erythema multiforme and Stevens-Johnson syndrome, have been reported with use of imatinib mesylate. In some cases of bullous dermatologic reactions, including erythema multiforme and Stevens-Johnson syndrome reported during postmarketing surveillance, a recurrent dermatologic reaction was observed upon rechallenge. Several foreign postmarketing reports have described cases in which patients tolerated the reintroduction of imatinib mesylate therapy after resolution or improvement of the bullous reaction. In these instances, imatinib mesylate was resumed at a dose lower than that at which the reaction occurred and some patients also received concomitant treatment with corticosteroids or antihistamines.

5.9 Hypothyroidism

Clinical cases of hypothyroidism have been reported in thyroidectomy patients undergoing levothyroxine replacement during treatment with imatinib mesylate. Monitor TSH levels in such patients.

5.10 Embryo-fetal Toxicity

Imatinib mesylate can cause fetal harm when administered to a pregnant woman. Imatinib mesylate was teratogenic in rats when administered during organogenesis at doses approximately equal to the maximum human dose of 800 mg/day based on body surface area. Significant post-implantation loss was seen in female rats administered imatinib mesylate at doses approximately one-half the maximum human dose of 800 mg/day based on body surface area. Advise sexually active female patients of reproductive potential to use effective contraception (methods that result in less than 1% pregnancy rates) when using imatinib mesylate and for 14 days after stopping imatinib mesylate. If this drug is used during pregnancy or if the patient becomes pregnant while taking this drug, apprise the patient of the potential hazard to a fetus [see *Use in Specific Populations (8.1)*].

5.11 Growth Retardation in Children and Adolescents

Growth retardation has been reported in children and pre-adolescents receiving imatinib mesylate. The long-term effects of prolonged treatment with imatinib mesylate on growth in children are unknown. Therefore, monitor growth in children under imatinib mesylate treatment [see *Adverse Reactions (6.1)*].

5.12 Tumor Lysis Syndrome

Cases of Tumor Lysis Syndrome (TLS), including fatal cases, have been reported in patients with CML, ALL and eosinophilic leukemia receiving imatinib mesylate. The patients at risk of TLS are those with tumors having a high proliferative rate or high tumor burden prior to treatment. Monitor these patients closely and take appropriate precautions. Due to possible occurrence of TLS, correct clinically significant dehydration and treat high uric acid levels prior to initiation of imatinib mesylate.

5.13 Impairments Related to Driving and Using Machinery

Motor vehicle accidents have been reported in patients receiving imatinib mesylate. Advise patients that they may experience side effects such as dizziness, blurred vision or somnolence during treatment with imatinib mesylate. Recommend caution when driving a car or operating machinery.

5.14 Renal Toxicity

A decline in renal function may occur in patients receiving imatinib mesylate. Median estimated glomerular filtration rate (eGFR) values in patients on imatinib mesylate tablets 400 mg daily for newly-diagnosed CML (four randomized trials) and another indication declined from a baseline value of 85 ml/min/1.73m² (N = 1190) to 75 ml/min/1.73m² at 12 months (N = 1082) and 69 ml/min/1.73m² at 60 months (N = 549). Evaluate renal function prior to initiating imatinib mesylate and monitor during therapy, with attention to risk factors for renal dysfunction such as pre-existing renal impairment, diabetes mellitus, hypertension, and congestive heart failure.

6 ADVERSE REACTIONS

The following serious adverse reactions are described elsewhere in the labeling:

- Fluid Retention and Edema [see Warnings and Precautions (5.1)]
- Hematologic Toxicity [see Warnings and Precautions (5.2)]
- Congestive Heart Failure and Left Ventricular Dysfunction [see Warnings and Precautions (5.3)]
- Hepatotoxicity [see Warnings and Precautions (5.4)]
- Hemorrhage [see Warnings and Precautions (5.5)]
- Gastrointestinal Disorders [see Warnings and Precautions (5.6)]
- Hypereosinophilic Cardiac Toxicity [see Warnings and Precautions (5.7)]
- Dermatologic Toxicities [see Warnings and Precautions (5.8)]
- Hypothyroidism [see Warnings and Precautions (5.9)]
- Growth Retardation in Children and Adolescents [see Warnings and Precautions (5.11)]
- Tumor Lysis Syndrome [see Warnings and Precautions (5.12)]
- Impairments Related to Driving and Using Machinery [see Warnings and Precautions (5.13)]
- Renal Toxicity [see Warnings and Precautions (5.14)]

6.1 Clinical Trials Experience

Because clinical trials are conducted under widely varying conditions, adverse reaction rates observed in the clinical trials of a drug cannot be directly compared to rates in the clinical trials of another drug and may not reflect the rates observed in practice.

Chronic Myeloid Leukemia

The majority of imatinib mesylate treated patients experienced adverse reactions at some time. Imatinib mesylate was discontinued due to drug-related adverse reactions in 2.4% of patients receiving imatinib mesylate in the randomized trial of newly diagnosed patients with Ph⁺ CML in chronic phase comparing imatinib mesylate versus IFN+Ara-C, and in 12.5% of patients receiving imatinib mesylate in the randomized trial of newly diagnosed patients with Ph⁺ CML in chronic phase comparing imatinib mesylate and nilotinib. Imatinib mesylate was discontinued due to drug-related adverse reactions in 4% of patients in chronic phase after failure of interferon-alpha therapy, in 4% of patients in accelerated phase and in 5% of patients in blast crisis.

The most frequently reported drug-related adverse reactions were edema, nausea and vomiting, muscle cramps, musculoskeletal pain, diarrhea and rash (Table 2 and Table 3 for newly diagnosed CML, Table 4 for other CML patients). Edema was most frequently periorbital or in lower limbs and was managed with diuretics, other supportive measures, or by reducing the dose of imatinib mesylate [see Dosage and Administration (2.13)]. The frequency of severe superficial edema was 1.5%-6%.

A variety of adverse reactions represent local or general fluid retention including pleural effusion, ascites, pulmonary edema and rapid weight gain with or without superficial edema. These reactions appear to be dose related, were more common in the blast crisis and accelerated phase studies (where the dose was 600 mg/day), and are more common in the elderly. These reactions were usually managed by interrupting imatinib mesylate treatment and using diuretics or other appropriate supportive care measures. These reactions may be serious or life-threatening.

Adverse reactions, regardless of relationship to study drug, that were reported in at least 10% of the imatinib mesylate treated patients are shown in Tables 2, 3, and 4.

Table 2: Adverse Reactions Regardless of Relationship to Study Drug Reported in Newly Diagnosed CML Clinical Trial in the Imatinib Mesylate versus IFN+Ara-C Study (Greater Than or Equal to 10% of Imatinib Mesylate Treated Patients) *

Preferred Term	All Grades		CTC Grades 3/4	
	Imatinib Mesylate N = 551 (%)	IFN+Ara-C N = 533 (%)	Imatinib Mesylate N = 551 (%)	IFN+Ara- C N = 533 (%)
Fluid Retention	61.7	11.1	2.5	0.9
-- Superficial Edema	59.9	9.6	1.5	0.4
-- Other Fluid Retention Reactions †	6.9	1.9	1.3	0.6
Nausea	49.5	61.5	1.3	5.1
Muscle Cramps	49.2	11.8	2.2	0.2
Musculoskeletal Pain	47.0	44.8	5.4	8.6
Diarrhea	45.4	43.3	3.3	3.2
Rash and Related Terms	40.1	26.1	2.9	2.4
Fatigue	38.8	67.0	1.8	25.1
Headache	37.0	43.3	0.5	3.8
Joint Pain	31.4	38.1	2.5	7.7
Abdominal Pain	36.5	25.9	4.2	3.9
Nasopharyngitis	30.5	8.8	0	0.4
Hemorrhage	28.9	21.2	1.8	1.7
-- GI Hemorrhage	1.6	1.1	0.5	0.2
-- CNS Hemorrhage	0.2	0.4	0	0.4
Myalgia	24.1	38.8	1.5	8.3
Vomiting	22.5	27.8	2.0	3.4
Dyspepsia	18.9	8.3	0	0.8
Cough	20.0	23.1	0.2	0.6
Pharyngolaryngeal Pain	18.1	11.4	0.2	0
Upper Respiratory Tract Infection	21.2	8.4	0.2	0.4
Dizziness	19.4	24.4	0.9	3.8
Pyrexia	17.8	42.6	0.9	3.0
Weight Increased	15.6	2.6	2.0	0.4
Insomnia	14.7	18.6	0	2.3
Depression	14.9	35.8	0.5	13.1
Influenza	13.8	6.2	0.2	0.2
Bone Pain	11.3	15.6	1.6	3.4

Constipation	11.4	14.4	0.7	0.2
Sinusitis	11.4	6.0	0.2	0.2

* All adverse reactions occurring in greater than or equal to 10% of imatinib mesylate treated patients are listed regardless of suspected relationship to treatment.

† Other fluid retention reactions include pleural effusion, ascites, pulmonary edema, pericardial effusion, anasarca, edema aggravated, and fluid retention not otherwise specified.

Table 3: Most Frequently Reported Non-hematologic Adverse Reactions (Regardless of Relationship to Study Drug) in Patients with Newly Diagnosed Ph+ CML-CP in the Imatinib Mesylate versus Nilotinib Study (Greater Than or Equal to 10% in Imatinib Mesylate Tablets 400 mg Once-Daily or Nilotinib 300 mg Twice-Daily Groups) 60-Month Analysis *

		Patients with Newly Diagnosed Ph+ CML-CP			
		Imatinib Mesylate Tablets 400 mg once-daily N = 280	Nilotinib 300 mg twice-daily N = 279	Imatinib Mesylate Tablets 400 mg once-daily N = 280	Nilotinib 300 mg twice-daily N = 279
Body System and Preferred Term		All Grades (%)		CTC Grades †3/4 (%)	
Skin and subcutaneous tissue disorders	Rash	19	38	2	< 1
	Pruritus	7	21	0	< 1
	Alopecia	7	13	0	0
	Dry skin	6	12	0	0
Gastrointestinal disorders	Nausea	41	22	2	2
	Constipation	8	20	0	< 1
	Diarrhea	46	19	4	1
	Vomiting	27	15	< 1	< 1
	Abdominal pain upper	14	18	< 1	1
	Abdominal pain	12	15	0	2
	Dyspepsia	12	10	0	0
Nervous system disorders	Headache	23	32	< 1	3
	Dizziness	11	12	< 1	< 1
General disorders and administration site conditions	Fatigue	20	23	1	1
	Pyrexia	13	14	0	< 1
	Asthenia	12	14	0	< 1
	Peripheral edema	20	9	0	< 1
	Face edema	14	< 1	< 1	0
Musculoskeletal and connective tissue disorders	Myalgia	19	19	< 1	< 1
	Arthralgia	17	22	< 1	< 1
	Muscle spasms	34	12	1	0
	Pain in extremity	16	15	< 1	< 1
	Back pain	17	19	1	1
Respiratory, thoracic and mediastinal disorders	Cough	13	17	0	0
	Oropharyngeal pain	6	12	0	0
	Dyspnea	6	11	< 1	2
Infections and infestations	Nasopharyngitis	21	27	0	0
	Upper respiratory	14	17	0	< 1

	tract infection				
	Influenza	9	13	0	0
	Gastroenteritis	10	7	< 1	0
Eye disorders	Eyelid edema	19	1	< 1	0
	Periorbital edema	15	< 1	0	0
Psychiatric disorders	Insomnia	9	11	0	0
Vascular disorder	Hypertension	4	10	< 1	1

* Excluding laboratory abnormalities

† NCI Common Terminology Criteria for Adverse Events, Version 3.0

Table 4: Adverse Reactions Regardless of Relationship to Study Drug Reported in Other CML Clinical Trials (Greater Than or Equal to 10% of All Patients in any Trial) *

Preferred Term	Myeloid Blast Crisis (N = 260) %		Accelerated Phase (N = 235) %		Chronic Phase, IFN Failure (N = 532) %	
	All Grades	Grade 3/4	All Grades	Grade 3/4	All Grades	Grade 3/4
Fluid Retention	72	11	76	6	69	4
-- Superficial Edema	66	6	74	3	67	2
-- Other Fluid Retention	22	6	15	4	7	2
Reactions †						
Nausea	71	5	73	5	63	3
Muscle Cramps	28	1	47	0.4	62	2
Vomiting	54	4	58	3	36	2
Diarrhea	43	4	57	5	48	3
Hemorrhage	53	19	49	11	30	2
-- CNS Hemorrhage	9	7	3	3	2	1
-- GI Hemorrhage	8	4	6	5	2	0.4
Musculoskeletal Pain	42	9	49	9	38	2
Fatigue	30	4	46	4	48	1
Skin Rash	36	5	47	5	47	3
Pyrexia	41	7	41	8	21	2
Arthralgia	25	5	34	6	40	1
Headache	27	5	32	2	36	0.6
Abdominal Pain	30	6	33	4	32	1
Weight Increased	5	1	17	5	32	7
Cough	14	0.8	27	0.9	20	0
Dyspepsia	12	0	22	0	27	0
Myalgia	9	0	24	2	27	0.2
Nasopharyngitis	10	0	17	0	22	0.2
Asthenia	18	5	21	5	15	0.2
Dyspnea	15	4	21	7	12	0.9
Upper Respiratory Tract Infection	3	0	12	0.4	19	0
Anorexia	14	2	17	2	7	0
Night Sweats	13	0.8	17	1	14	0.2

Constipation	16	2	16	0.9	9	0.4
Dizziness	12	0.4	13	0	16	0.2
Pharyngitis	10	0	12	0	15	0
Insomnia	10	0	14	0	14	0.2
Pruritus	8	1	14	0.9	14	0.8
Hypokalemia	13	4	9	2	6	0.8
Pneumonia	13	7	10	7	4	1
Anxiety	8	0.8	12	0	8	0.4
Liver Toxicity	10	5	12	6	6	3
Rigors	10	0	12	0.4	10	0
Chest Pain	7	2	10	0.4	11	0.8
Influenza	0.8	0.4	6	0	11	0.2
Sinusitis	4	0.4	11	0.4	9	0.4

* All adverse reactions occurring in greater than or equal to 10% of patients are listed regardless of suspected relationship to treatment.

† Other fluid retention reactions include pleural effusion, ascites, pulmonary edema, pericardial effusion, anasarca, edema aggravated, and fluid retention not otherwise specified.

Hematologic and Biochemistry Laboratory Abnormalities

Cytopenias, and particularly neutropenia and thrombocytopenia, were a consistent finding in all studies, with a higher frequency at doses greater than or equal to 750 mg (Phase 1 study). The occurrence of cytopenias in CML patients was also dependent on the stage of the disease.

In patients with newly diagnosed CML, cytopenias were less frequent than in the other CML patients (see Tables 5, 6, and 7). The frequency of Grade 3 or 4 neutropenia and thrombocytopenia was between 2- and 3-fold higher in blast crisis and accelerated phase compared to chronic phase (see Tables 4 and 5). The median duration of the neutropenic and thrombocytopenic episodes varied from 2 to 3 weeks, and from 2 to 4 weeks, respectively.

These reactions can usually be managed with either a reduction of the dose or an interruption of treatment with imatinib mesylate, but may require permanent discontinuation of treatment.

Table 5: Laboratory Abnormalities in Newly Diagnosed CML Clinical Trial (Imatinib Mesylate versus IFN+Ara-C)

CTC Grades	Imatinib Mesylate N = 551 %		IFN+Ara-C N = 533 %	
	Grade 3	Grade 4	Grade 3	Grade 4
Hematology Parameters*				
-- Neutropenia *	13.1	3.6	20.8	4.5
-- Thrombocytopenia *	8.5	0.4	15.9	0.6
-- Anemia	3.3	1.1	4.1	0.2
Biochemistry Parameters				
-- Elevated Creatinine	0	0	0.4	0
-- Elevated Bilirubin	0.9	0.2	0.2	0
-- Elevated Alkaline Phosphatase	0.2	0	0.8	0
-- Elevated SGOT/SGPT	4.7	0.5	7.1	0.4

* p less than 0.001 (difference in Grade 3 plus 4 abnormalities between the two treatment groups)

Table 6: Percent Incidence of Clinically Relevant Grade 3/4* Laboratory Abnormalities in the

Newly Diagnosed CML Clinical Trial (Imatinib Mesylate versus Nilotinib)

	Imatinib Mesylate Tablets 400 mg once-daily N = 280 (%)	Nilotinib 300 mg twice-daily N = 279 (%)
Hematologic Parameters		
Thrombocytopenia	9	10
Neutropenia	22	12
Anemia	6	4
Biochemistry Parameters		
Elevated lipase	4	9
Hyperglycemia	< 1	7
Hypophosphatemia	10	8
Elevated bilirubin (total)	< 1	4
Elevated SGPT (ALT)	3	4
Hyperkalemia	1	2
Hyponatremia	< 1	1
Hypokalemia	2	< 1
Elevated SGOT (AST)	1	1
Decreased albumin	< 1	0
Hypocalcemia	< 1	< 1
Elevated alkaline phosphatase	< 1	0
Elevated creatinine	< 1	0

* NCI Common Terminology Criteria for Adverse Events, version 3.0

Table 7: Laboratory Abnormalities in Other CML Clinical Trials

	Myeloid Blast Crisis (N = 260) 600 mg N = 223 400 mg N = 37 %		Accelerated Phase (N = 235) 600 mg N = 158 400 mg N = 77 %		Chronic Phase, IFN Failure (N = 532) 400 mg %	
	Grade 3	Grade 4	Grade 3	Grade 4	Grade 3	Grade 4
CTC Grades*						
Hematology Parameters						
-- Neutropenia	16	48	23	36	27	9
-- Thrombocytopenia	30	33	31	13	21	< 1
-- Anemia	42	11	34	7	6	1
Biochemistry Parameters						
-- Elevated Creatinine	1.5	0	1.3	0	0.2	0
-- Elevated Bilirubin	3.8	0	2.1	0	0.6	0
-- Elevated Alkaline Phosphatase	4.6	0	5.5	0.4	0.2	0
-- Elevated SGOT (AST)	1.9	0	3.0	0	2.3	0
-- Elevated SGPT (ALT)	2.3	0.4	4.3	0	2.1	0

* CTC Grades: neutropenia (Grade 3 greater than or equal to $0.5-1.0 \times 10^9/L$, Grade 4 less than $0.5 \times 10^9/L$), thrombocytopenia (Grade 3 greater than or equal to $10-50 \times 10^9/L$, Grade 4 less than $10 \times 10^9/L$), anemia (hemoglobin greater than or equal to 65-80 g/L, Grade 4 less than 65 g/L), elevated creatinine (Grade 3 greater

than 3-6 x upper limit normal range [ULN], Grade 4 greater than 6 x ULN), elevated bilirubin (Grade 3 greater than 3-10 x ULN, Grade 4 greater than 10 x ULN), elevated alkaline phosphatase (Grade 3 greater than 5-20 x ULN, Grade 4 greater than 20 x ULN), elevated SGOT or SGPT (Grade 3 greater than 5-20 x ULN, Grade 4 greater than 20 x ULN)

Hepatotoxicity

Severe elevation of transaminases or bilirubin occurred in approximately 5% of CML patients (see Tables 6 and 7) and were usually managed with dose reduction or interruption (the median duration of these episodes was approximately 1 week). Treatment was discontinued permanently because of liver laboratory abnormalities in less than 1.0% of CML patients. One patient, who was taking acetaminophen regularly for fever, died of acute liver failure.

Adverse Reactions in Pediatric Population

Single Agent Therapy

The overall safety profile of pediatric patients treated with imatinib mesylate in 93 children studied was similar to that found in studies with adult patients, except that musculoskeletal pain was less frequent (20.5%) and peripheral edema was not reported. Nausea and vomiting were the most commonly reported individual adverse reactions with an incidence similar to that seen in adult patients. Most patients experienced adverse reactions at some time during the study. The incidence of Grade 3/4 events across all types of adverse reactions was 75%; the events with the highest Grade 3/4 incidence in CML pediatric patients were mainly related to myelosuppression.

Adverse Reactions in Other Subpopulations

In older patients (greater than or equal to 65 years old), with the exception of edema, where it was more frequent, there was no evidence of an increase in the incidence or severity of adverse reactions. In women there was an increase in the frequency of neutropenia, as well as Grade 1/2 superficial edema, headache, nausea, rigors, vomiting, rash, and fatigue. No differences were seen that were related to race but the subsets were too small for proper evaluation.

Acute Lymphoblastic Leukemia

The adverse reactions were similar for Ph+ ALL as for Ph+ CML. The most frequently reported drug-related adverse reactions reported in the Ph+ ALL studies were mild nausea and vomiting, diarrhea, myalgia, muscle cramps and rash. Superficial edema was a common finding in all studies and were described primarily as periorbital or lower limb edemas. These edemas were reported as Grade 3/4 events in 6.3% of the patients and may be managed with diuretics, other supportive measures, or in some patients by reducing the dose of imatinib mesylate.

Myelodysplastic/Myeloproliferative Diseases

Adverse reactions, regardless of relationship to study drug, that were reported in at least 10% of the patients treated with imatinib mesylate for MDS/MPD in the Phase 2 study, are shown in Table 9.

Table 9: Adverse Reactions Regardless of Relationship to Study Drug Reported (More than One Patient) in MPD Patients in the Phase 2 Study (Greater Than or Equal to 10% All Patients) All Grades

Preferred Term	N = 7 n (%)
Nausea	4 (57.1)
Diarrhea	3 (42.9)
Anemia	2 (28.6)

Fatigue	2 (28.6)
Muscle Cramp	3 (42.9)
Arthralgia	2 (28.6)
Periorbital Edema	2 (28.6)

Aggressive Systemic Mastocytosis

All ASM patients experienced at least one adverse reaction at some time. The most frequently reported adverse reactions were diarrhea, nausea, ascites, muscle cramps, dyspnea, fatigue, peripheral edema, anemia, pruritus, rash and lower respiratory tract infection. None of the 5 patients in the Phase 2 study with ASM discontinued imatinib mesylate due to drug-related adverse reactions or abnormal laboratory values.

Hypereosinophilic Syndrome and Chronic Eosinophilic Leukemia

The safety profile in the HES/CEL patient population does not appear to be different from the safety profile of imatinib mesylate observed in other hematologic malignancy populations, such as Ph+ CML. All patients experienced at least one adverse reaction, the most common being gastrointestinal, cutaneous and musculoskeletal disorders. Hematological abnormalities were also frequent, with instances of CTC Grade 3 leukopenia, neutropenia, lymphopenia, and anemia.

Dermatofibrosarcoma Protuberans

Adverse reactions, regardless of relationship to study drug, that were reported in at least 10% of the 12 patients treated with imatinib mesylate for DFSP in the Phase 2 study are shown in Table 10.

Table 10: Adverse Reactions Regardless of Relationship to Study Drug Reported in DFSP Patients in the Phase 2 Study (Greater Than or Equal to 10% All Patients) All Grades

Preferred Term	N = 12 n (%)
Nausea	5 (41.7)
Diarrhea	3 (25.0)
Vomiting	3 (25.0)
Periorbital Edema	4 (33.3)
Face Edema	2 (16.7)
Rash	3 (25.0)
Fatigue	5 (41.7)
Edema Peripheral	4 (33.3)
Pyrexia	2 (16.7)
Eye Edema	4 (33.3)
Lacrimation Increased	3 (25.0)
Dyspnea Exertional	2 (16.7)
Anemia	3 (25.0)
Rhinitis	2 (16.7)
Anorexia	2 (16.7)

Clinically relevant or severe laboratory abnormalities in the 12 patients treated with imatinib mesylate for DFSP in the Phase 2 study are presented in Table 11.

Table 11: Laboratory Abnormalities Reported in DFSP Patients in the Phase 2 Study

	N = 12
--	---------------

CTC Grades*	Grade 3 %	Grade 4 %
Hematology Parameters		
-- Anemia	17	0
-- Thrombocytopenia	17	0
-- Neutropenia	0	8
Biochemistry Parameters		
-- Elevated Creatinine	0	8

* CTC Grades: neutropenia (Grade 3 greater than or equal to $0.5-1.0 \times 10^9/L$, Grade 4 less than $0.5 \times 10^9/L$), thrombocytopenia (Grade 3 greater than or equal to $10-50 \times 10^9/L$, Grade 4 less than $10 \times 10^9/L$), anemia (Grade 3 greater than or equal to $65-80 \text{ g/L}$, Grade 4 less than 65 g/L), elevated creatinine (Grade 3 greater than $3-6 \times$ upper limit normal range [ULN], Grade 4 greater than $6 \times$ ULN)

Adverse Reactions from Multiple Clinical Trials

Cardiac Disorders:

Estimated 1%-10%: palpitations, pericardial effusion

Estimated 0.1%-1%: congestive cardiac failure, tachycardia, pulmonary edema

Estimated 0.01%-0.1%: arrhythmia, atrial fibrillation, cardiac arrest, myocardial infarction, angina pectoris

Vascular Disorders:

Estimated 1%-10%: flushing, hemorrhage

Estimated 0.1%-1%: hypertension, hypotension, peripheral coldness, Raynaud's phenomenon, hematoma, subdural hematoma

Investigations:

Estimated 1%-10%: blood CPK increased, blood amylase increased

Estimated 0.1%-1%: blood LDH increased

Skin and Subcutaneous Tissue Disorders:

Estimated 1%-10%: dry skin, alopecia, face edema, erythema, photosensitivity reaction, nail disorder, purpura

Estimated 0.1%-1%: exfoliative dermatitis, bullous eruption, psoriasis, rash pustular, contusion, sweating increased, urticaria, ecchymosis, increased tendency to bruise, hypotrichosis, skin hypopigmentation, skin hyperpigmentation, onychoclasia, folliculitis, petechiae, erythema multiforme

Estimated 0.01%-0.1%: vesicular rash, Stevens-Johnson syndrome, acute generalized exanthematous pustulosis, acute febrile neutrophilic dermatosis (Sweet's syndrome), nail discoloration, angioneurotic edema, leucocytoclastic vasculitis

Gastrointestinal Disorders:

Estimated 1%-10%: abdominal distention, gastroesophageal reflux, dry mouth, gastritis

Estimated 0.1%-1%: gastric ulcer, stomatitis, mouth ulceration, eructation, melena, esophagitis, ascites, hematemesis, cheilitis, dysphagia, pancreatitis

Estimated 0.01%-0.1%: colitis, ileus, inflammatory bowel disease

General Disorders and Administration Site Conditions:

Estimated 1%-10%: weakness, anasarca, chills

Estimated 0.1%-1%: malaise

Blood and Lymphatic System Disorders:

Estimated 1%-10%: pancytopenia, febrile neutropenia, lymphopenia, eosinophilia

Estimated 0.1%-1%: thrombocythemia, bone marrow depression, lymphadenopathy

Estimated 0.01%-0.1%: hemolytic anemia, aplastic anemia

Hepatobiliary Disorders:

Estimated 0.1%-1%: hepatitis, jaundice

Estimated 0.01%-0.1%: hepatic failure and hepatic necrosis ¹

Immune System Disorders:

Estimated 0.01%-0.1%: angioedema

Infections and Infestations:

Estimated 0.1%-1%: sepsis, herpes simplex, herpes zoster, cellulitis, urinary tract infection, gastroenteritis

Estimated 0.01%-0.1%: fungal infection

Metabolism and Nutrition Disorders:

Estimated 1%-10%: weight decreased, decreased appetite

Estimated 0.1%-1%: dehydration, gout, increased appetite, hyperuricemia, hypercalcemia, hyperglycemia, hyponatremia, hyperkalemia, hypomagnesemia

Musculoskeletal and Connective Tissue Disorders:

Estimated 1%-10%: joint swelling

Estimated 0.1%-1%: joint and muscle stiffness, muscular weakness, arthritis

Nervous System/Psychiatric Disorders:

Estimated 1%-10%: paresthesia, hypesthesia

Estimated 0.1%-1%: syncope, peripheral neuropathy, somnolence, migraine, memory impairment, libido decreased, sciatica, restless leg syndrome, tremor

Estimated 0.01%-0.1%: increased intracranial pressure ¹, confusional state, convulsions, optic neuritis

Renal and Urinary Disorders:

Estimated 0.1%-1%: renal failure acute, urinary frequency increased, hematuria, renal pain

Reproductive System and Breast Disorders:

Estimated 0.1%-1%: breast enlargement, menorrhagia, sexual dysfunction, gynecomastia, erectile dysfunction, menstruation irregular, nipple pain, scrotal edema

Respiratory, Thoracic and Mediastinal Disorders:

Estimated 1%-10%: epistaxis

Estimated 0.1%-1%: pleural effusion

Estimated 0.01%-0.1%: interstitial pneumonitis, pulmonary fibrosis, pleuritic pain, pulmonary hypertension, pulmonary hemorrhage

Eye, Ear and Labyrinth Disorders:

Estimated 1%-10%: conjunctivitis, vision blurred, orbital edema, conjunctival hemorrhage, dry eye

Estimated 0.1%-1%: vertigo, tinnitus, eye irritation, eye pain, scleral hemorrhage, retinal hemorrhage,

blepharitis, macular edema, hearing loss, cataract

Estimated 0.01%-0.1%: papilledema ¹, glaucoma

¹Including some fatalities

6.2 Postmarketing Experience

The following additional adverse reactions have been identified during post approval use of imatinib mesylate. Because these reactions are reported voluntarily from a population of uncertain size, it is not always possible to reliably estimate their frequency or establish a causal relationship to drug exposure.

Infections: hepatitis B virus reactivation ¹

Nervous System Disorders: cerebral edema ¹

Eye Disorders: vitreous hemorrhage

Cardiac Disorders: pericarditis, cardiac tamponade ¹

Vascular Disorders: thrombosis/embolism, anaphylactic shock

Respiratory, Thoracic and Mediastinal Disorders: acute respiratory failure ¹, interstitial lung disease

Gastrointestinal Disorders: ileus/intestinal obstruction, tumor hemorrhage/tumor necrosis, gastrointestinal perforation ¹ [see Warnings and Precautions (5.6)], diverticulitis, gastric antral vascular ectasia

Skin and Subcutaneous Tissue Disorders: lichenoid keratosis, lichen planus, toxic epidermal necrolysis, palmar-plantar erythrodysesthesia syndrome, drug rash with eosinophilia and systemic symptoms (DRESS), pseudoporphyria

Musculoskeletal and Connective Tissue Disorders: avascular necrosis/hip osteonecrosis, rhabdomyolysis/myopathy, growth retardation in children, musculoskeletal pain upon treatment discontinuation (including myalgia, pain in extremity, arthralgia, bone pain)

Reproduction Disorders: hemorrhagic corpus luteum/hemorrhagic ovarian cyst

Blood and Lymphatic System Disorders: thrombotic microangiopathy

¹Including some fatalities

7 DRUG INTERACTIONS

7.1 Agents Inducing CYP3A Metabolism

Concomitant administration of imatinib mesylate tablets and strong CYP3A4 inducers may reduce total exposure of imatinib; consider alternative agents [see Clinical Pharmacology (12.3)].

7.2 Agents Inhibiting CYP3A Metabolism

Concomitant administration of imatinib mesylate tablets and strong CYP3A4 inhibitors may result in a significant imatinib exposure increase. Grapefruit juice may also increase plasma concentrations of imatinib; avoid grapefruit juice [see Clinical Pharmacology (12.3)].

7.3 Interactions with Drugs Metabolized by CYP3A4

Imatinib mesylate tablets will increase plasma concentration of CYP3A4 metabolized drugs (e.g., triazolo-benzodiazepines, dihydropyridine calcium channel blockers, certain HMG-CoA reductase inhibitors, etc.). Use caution when administering imatinib mesylate tablets with CYP3A4 substrates that have a narrow therapeutic window.

Because warfarin is metabolized by CYP2C9 and CYP3A4, use low-molecular weight or standard

heparin instead of warfarin in patients who require anticoagulation [see *Clinical Pharmacology (12.3)*].

7.4 Interactions with Drugs Metabolized by CYP2D6

Use caution when administering imatinib mesylate tablets with CYP2D6 substrates that have a narrow therapeutic window.

8 USE IN SPECIFIC POPULATIONS

8.1 Pregnancy

Risk Summary

Imatinib mesylate tablets can cause fetal harm when administered to a pregnant woman based on human and animal data. There are no clinical studies regarding use of imatinib mesylate tablets in pregnant women. There have been postmarket reports of spontaneous abortions and congenital anomalies from women who have been exposed to imatinib mesylate tablets during pregnancy. Reproductive studies in rats have demonstrated that imatinib mesylate induced teratogenicity and increased incidence of congenital abnormalities following prenatal exposure to imatinib mesylate at doses equal to the highest recommended human dose of 800 mg/day based on body surface area. Advise women to avoid pregnancy when taking imatinib mesylate tablets. If this drug is used during pregnancy, or if the patient becomes pregnant while taking this drug, apprise the patient of the potential hazard to the fetus.

The background risk of major birth defects and miscarriage for the indicated population is not known; however, in the U.S. general population, the estimated background risk of major birth defects of clinically recognized pregnancies is 2-4% and of miscarriage is 15%-20%.

Data

Animal Data

In embryo-fetal development studies in rats and rabbits, pregnant animals received oral doses of imatinib mesylate up to 100 mg/kg/day and 60 mg/kg/day, respectively, during the period of organogenesis.

In rats, imatinib mesylate was teratogenic at 100 mg/kg/day (approximately equal to the maximum human dose of 800 mg/day based on body surface area), the number of fetuses with encephalocoele and exencephaly was higher than historical control values and these findings were associated with missing or underdeveloped cranial bones. Lower mean fetal body weights were associated with retarded skeletal ossifications.

In rabbits, at doses 1.5 times higher than the maximum human dose of 800 mg/day based on body surface area, no effects on the reproductive parameters with respect to implantation sites, number of live fetuses, sex ratio or fetal weight were observed. The examinations of the fetuses did not reveal any drug related morphological changes.

In a pre- and postnatal development study in rats, pregnant rats received oral doses of imatinib mesylate during gestation (organogenesis) and lactation up to 45 mg/kg/day. Five animals developed a red vaginal discharge in the 45 mg/kg/day group on Days 14 or 15 of gestation, the significance of which is unknown since all females produced viable litters and none had increased post-implantation loss. Other maternal effects noted only at the dose of 45 mg/kg/day (approximately one-half the maximum human dose of 800 mg/day based on body surface area) included an increased numbers of stillborn pups and pups dying between postpartum Days 0 and 4. In the F₁ offspring at this same dose level, mean body weights were reduced from birth until terminal sacrifice and the number of litters achieving criterion for preputial separation was slightly decreased. There were no other significant effects in developmental parameters or behavioral testing. F₁ fertility was not affected but reproductive effects were noted at 45 mg/kg/day including an increased number of resorptions and a decreased number of viable fetuses. The NOEL for both maternal animals and the F₁ generation was 15 mg/kg/day.

8.2 Lactation

Risk Summary

Imatinib and its active metabolite are excreted into human milk. Because of the potential for serious adverse reactions in breastfed infants from imatinib mesylate, advise a lactating woman not to breastfeed during treatment and for 1 month after the last dose.

Human Data

Based on data from 3 breastfeeding women taking imatinib mesylate tablets, the milk:plasma ratio is about 0.5 for imatinib and about 0.9 for the active metabolite. Considering the combined concentration of imatinib and active metabolite, a breastfed infant could receive up to 10% of the maternal therapeutic dose based on body weight.

8.3 Females and Males of Reproductive Potential

Pregnancy Testing

Human postmarketing reports and animal studies have shown imatinib mesylate to be harmful to the developing fetus. Test pregnancy status in females with reproductive potential prior to the initiation of treatment with imatinib mesylate tablets.

Contraception

Females

Advise female patients of reproductive potential to use effective contraception (methods that result in less than 1% pregnancy rates) when using imatinib mesylate tablets during treatment and for fourteen days after stopping treatment with imatinib mesylate tablets [see *Use in Specific Populations (8.1)*].

Infertility

The risk of infertility in females or males of reproductive potential has not been studied in humans. In a rat study, the fertility in males and females was not affected [see *Nonclinical Toxicology (13)*].

8.4 Pediatric Use

The safety and effectiveness of imatinib mesylate tablets have been demonstrated in pediatric patients with newly diagnosed Ph⁺ chronic phase CML [see *Clinical Studies (14.2)*]. There are no data in children under 1 year of age.

8.5 Geriatric Use

In the CML clinical studies, approximately 20% of patients were older than 65 years. In the study of patients with newly diagnosed CML, 6% of patients were older than 65 years. The frequency of edema was higher in patients older than 65 years as compared to younger patients; no other difference in the safety profile was observed [see *Warnings and Precautions (5.1)*]. The efficacy of imatinib mesylate tablets was similar in older and younger patients.

8.6 Hepatic Impairment

The effect of hepatic impairment on the pharmacokinetics of both imatinib and its major metabolite, CGP74588, was assessed in 84 patients with cancer with varying degrees of hepatic impairment at imatinib doses ranging from 100 mg to 800 mg.

Mild and moderate hepatic impairment do not influence exposure to imatinib and CGP74588. In patients with severe hepatic impairment, the imatinib C_{max} and area under curve (AUC) increased by 63% and 45% and the CGP74588 C_{max} and AUC increased by 56% and 55%, relative to patients with normal

hepatic function [see *Clinical Pharmacology (12.3)*]. Reduce the dose by 25% for patients with severe hepatic impairment [see *Dosage and Administration (2.12)*].

Table 16: Liver Function Classification

Liver Function Test	Normal (N = 14)	Mild (N = 30)	Moderate (N = 20)	Severe (N = 20)
Total Bilirubin	less than or equal to ULN	greater than 1.0-1.5 times the ULN	greater than 1.5-3 times the ULN	greater than 3-10 times the ULN
SGOT	less than or equal to ULN	greater than ULN (can be normal if Total Bilirubin is greater than ULN)	Any	Any

ULN = upper limit of normal for the institution

8.7 Renal Impairment

The effect of renal impairment on the pharmacokinetics of imatinib was assessed in 59 patients with cancer and varying degrees of renal impairment at single and steady state imatinib doses ranging from 100 to 800 mg/day. The mean exposure to imatinib (dose normalized AUC) in patients with mild and moderate renal impairment increased 1.5- to 2-fold compared to patients with normal renal function. There are not sufficient data in patients with severe renal impairment [see *Clinical Pharmacology (12.3)*]. Dose reductions are necessary for patients with moderate and severe renal impairment [see *Dosage and Administration (2.12)*].

Table 17: Renal Function Classification

Renal Dysfunction	Renal Function Tests
Mild	CrCL = 40-59 mL/min
Moderate	CrCL = 20-39 mL/min
Severe	CrCL = less than 20 mL/min

CrCL = Creatinine Clearance

10 OVERDOSAGE

Experience with doses greater than 800 mg is limited. Isolated cases of imatinib mesylate tablets overdose have been reported. In the event of overdose, observe the patient and give appropriate supportive treatment.

Adult Overdose:

1,200 to 1,600 mg (Duration Varying Between 1 to 10 Days): Nausea, vomiting, diarrhea, rash erythema, edema, swelling, fatigue, muscle spasms, thrombocytopenia, pancytopenia, abdominal pain, headache, decreased appetite.

1,800 to 3,200 mg (as High as 3,200 mg Daily for 6 Days): Weakness, myalgia, increased CPK, increased bilirubin, gastrointestinal pain.

6,400 mg (Single Dose): One case in the literature reported one patient who experienced nausea, vomiting, abdominal pain, pyrexia, facial swelling, neutrophil count decreased, increase transaminases.

8 to 10 g (Single Dose): Vomiting and gastrointestinal pain have been reported.

A patient with myeloid blast crisis experienced Grade 1 elevations of serum creatinine, Grade 2 ascites and elevated liver transaminase levels, and Grade 3 elevations of bilirubin after inadvertently taking 1,200 mg of imatinib mesylate tablets daily for 6 days. Therapy was temporarily interrupted and

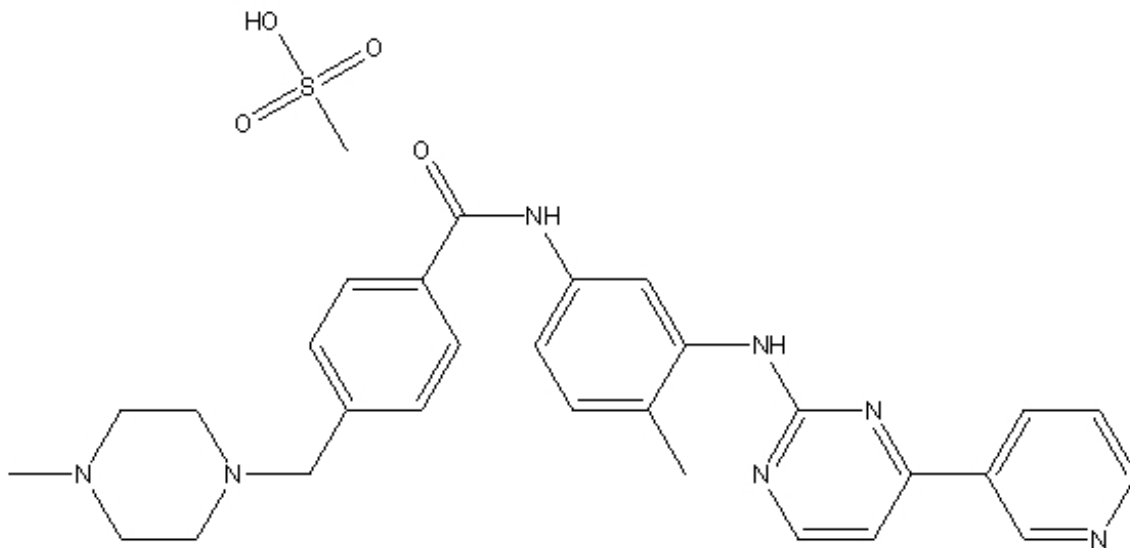
complete reversal of all abnormalities occurred within 1 week. Treatment was resumed at a dose of 400 mg daily without recurrence of adverse reactions. Another patient developed severe muscle cramps after taking 1,600 mg of imatinib mesylate tablets daily for 6 days. Complete resolution of muscle cramps occurred following interruption of therapy and treatment was subsequently resumed. Another patient that was prescribed 400 mg daily, took 800 mg of imatinib mesylate tablets on Day 1 and 1,200 mg on Day 2. Therapy was interrupted, no adverse reactions occurred and the patient resumed therapy.

Pediatric Overdose:

One 3-year-old male exposed to a single dose of 400 mg experienced vomiting, diarrhea and anorexia and another 3-year-old male exposed to a single dose of 980 mg experienced decreased white blood cell count and diarrhea.

11 DESCRIPTION

Imatinib is a small molecule kinase inhibitor. Imatinib mesylate film-coated tablets contain imatinib mesylate equivalent to 100 mg or 400 mg of imatinib free base. Imatinib mesylate is designated chemically as Benzamide, 4-[(4-methyl-1-piperazinyl)methyl]-N-[4-methyl-3-[[4-(3-pyridinyl)-2-pyrimidinyl]aminophenyl]-methanesulfonate salt and its structural formula is:



Imatinib mesylate is a white to off-white to brownish or yellowish tinged crystalline powder. Its molecular formula is $C_{29}H_{31}N_7O \cdot CH_4SO_3$ and its molecular weight is 589.71. Imatinib mesylate is soluble in aqueous buffers less than or equal to pH 5.5 but is very slightly soluble to insoluble in neutral/alkaline aqueous buffers. In non-aqueous solvents, the drug substance is freely soluble to very slightly soluble in dimethyl sulfoxide, methanol, and ethanol, but is insoluble in n-octanol, acetone, and acetonitrile.

Inactive Ingredients: colloidal silicon dioxide, crospovidone, hypromellose, magnesium stearate, microcrystalline cellulose, polyethylene glycol, polyvinyl alcohol, red iron oxide, talc, titanium dioxide and yellow iron oxide.

12 CLINICAL PHARMACOLOGY

12.1 Mechanism of Action

Imatinib mesylate is a protein-tyrosine kinase inhibitor that inhibits the BCR-ABL tyrosine kinase, the constitutive abnormal tyrosine kinase created by the Philadelphia chromosome abnormality in CML.

Imatinib inhibits proliferation and induces apoptosis in BCR-ABL positive cell lines as well as fresh leukemic cells from Philadelphia chromosome positive chronic myeloid leukemia. Imatinib inhibits colony formation in assays using *ex vivo* peripheral blood and bone marrow samples from CML patients.

In vivo, imatinib inhibits tumor growth of BCR-ABL transfected murine myeloid cells as well as BCR-ABL positive leukemia lines derived from CML patients in blast crisis.

Imatinib is also an inhibitor of the receptor tyrosine kinases for platelet-derived growth factor (PDGF) and stem cell factor (SCF), c-kit, and inhibits PDGF- and SCF-mediated cellular events.

12.3 Pharmacokinetics

The pharmacokinetics of imatinib mesylate tablets have been evaluated in studies in healthy subjects and in population pharmacokinetic studies in over 900 patients.

Absorption and Distribution

Imatinib is well absorbed after oral administration with C_{max} achieved within 2-4 hours post-dose. Mean absolute bioavailability is 98%. Mean imatinib AUC increases proportionally with increasing doses ranging from 25 mg to 1,000 mg. There is no significant change in the pharmacokinetics of imatinib on repeated dosing, and accumulation is 1.5- to 2.5-fold at steady state when imatinib mesylate tablets are dosed once-daily. At clinically relevant concentrations of imatinib, binding to plasma proteins in *in vitro* experiments is approximately 95%, mostly to albumin and α_1 -acid glycoprotein.

Elimination

Metabolism

CYP3A4 is the major enzyme responsible for metabolism of imatinib. Other cytochrome P450 enzymes, such as CYP1A2, CYP2D6, CYP2C9, and CYP2C19, play a minor role in its metabolism. The main circulating active metabolite in humans is the N-demethylated piperazine derivative, formed predominantly by CYP3A4. It shows *in vitro* potency similar to the parent imatinib. The plasma AUC for this metabolite is about 15% of the AUC for imatinib. The plasma protein binding of N-demethylated metabolite CGP74588 is similar to that of the parent compound. Human liver microsome studies demonstrated that imatinib mesylate tablets are a potent competitive inhibitor of CYP2C9, CYP2D6, and CYP3A4/5 with K_i values of 27, 7.5, and 8 μ M, respectively.

Excretion

Imatinib elimination is predominately in the feces, mostly as metabolites. Based on the recovery of compound(s) after an oral 14 C-labeled dose of imatinib, approximately 81% of the dose was eliminated within 7 days, in feces (68% of dose) and urine (13% of dose). Unchanged imatinib accounted for 25% of the dose (5% urine, 20% feces), the remainder being metabolites.

Following oral administration in healthy volunteers, the elimination half-lives of imatinib and its major active metabolite, the N-demethyl derivative (CGP74588), are approximately 18 and 40 hours, respectively.

Typically, clearance of imatinib in a 50-year-old patient weighing 50 kg is expected to be 8 L/h, while for a 50-year-old patient weighing 100 kg the clearance will increase to 14 L/h. The inter-patient variability of 40% in clearance does not warrant initial dose adjustment based on body weight and/or age but indicates the need for close monitoring for treatment-related toxicity.

Specific Populations

Hepatic Impairment

The effect of hepatic impairment on the pharmacokinetics of both imatinib and its major metabolite, CGP74588, was assessed in 84 patients with cancer and varying degrees of hepatic impairment [see Use

in *Specific Populations (8.6)*] at imatinib doses ranging from 100 mg to 800 mg. Exposure to both imatinib and CGP74588 was comparable between each of the mildly and moderately hepatically-impaired groups and the normal group. Patients with severe hepatic impairment tend to have higher exposure to both imatinib and its metabolite than patients with normal hepatic function. At steady state, the mean $C_{max}/dose$ and $AUC/dose$ for imatinib increased by about 63% and 45%, respectively, in patients with severe hepatic impairment compared to patients with normal hepatic function. The mean $C_{max}/dose$ and $AUC/dose$ for CGP74588 increased by about 56% and 55%, respectively, in patients with severe hepatic impairment compared to patients with normal hepatic function. Dose reductions are necessary for patients with severe hepatic impairment [see *Dosage and Administration (2.12)*].

Renal Impairment

The effect of renal impairment on the pharmacokinetics of imatinib was assessed in 59 cancer patients with varying degrees of renal impairment [see *Use in Specific Populations (8.7)*] at single and steady state imatinib doses ranging from 100 to 800 mg/day. The mean exposure to imatinib (dose normalized AUC) in patients with mild and moderate renal impairment increased 1.5- to 2-fold compared to patients with normal renal function. The AUCs did not increase for doses greater than 600 mg in patients with mild renal impairment. The AUCs did not increase for doses greater than 400 mg in patients with moderate renal impairment. Two patients with severe renal impairment were dosed with 100 mg/day and their exposures were similar to those seen in patients with normal renal function receiving 400 mg/day. Dose reductions are necessary for patients with moderate and severe renal impairment [see *Dosage and Administration (2.12)*].

Pediatric Use

As in adult patients, imatinib was rapidly absorbed after oral administration in pediatric patients, with a C_{max} of 2-4 hours. Apparent oral clearance was similar to adult values (11.0 L/hr/m² in children vs. 10.0 L/hr/m² in adults), as was the half-life (14.8 hours in children vs. 17.1 hours in adults). Dosing in children at both 260 mg/m² and 340 mg/m² achieved an AUC similar to the 400 mg dose in adults. The comparison of AUC on Day 8 vs. Day 1 at 260 mg/m² and 340 mg/m² dose levels revealed a 1.5- and 2.2-fold drug accumulation, respectively, after repeated once-daily dosing. Mean imatinib AUC did not increase proportionally with increasing dose.

Based on pooled population pharmacokinetic analysis in pediatric patients with hematological disorders (CML, or other hematological disorders treated with imatinib), clearance of imatinib increases with increasing body surface area (BSA). After correcting for the BSA effect, other demographics such as age, body weight and body mass index did not have clinically significant effects on the exposure of imatinib. The analysis confirmed that exposure of imatinib in pediatric patients receiving 260 mg/m² once-daily (not exceeding 400 mg once-daily) or 340 mg/m² once-daily (not exceeding 600 mg once-daily) were similar to those in adult patients who received imatinib 400 mg or 600 mg once-daily.

Drug Interactions

Agents Inducing CYP3A Metabolism

Pretreatment of healthy volunteers with multiple doses of rifampin followed by a single dose of imatinib mesylate tablets, increased imatinib mesylate tablets oral-dose clearance by 3.8-fold, which significantly (p less than 0.05) decreased mean C_{max} and AUC.

Similar findings were observed in patients receiving 400 to 1200 mg/day imatinib mesylate tablets concomitantly with enzyme-inducing anti-epileptic drugs (EIAED) (e.g., carbamazepine, oxcarbamazepine, phenytoin, fosphenytoin, phenobarbital, and primidone). The mean dose normalized AUC for imatinib in the patients receiving EIAED's decreased by 73% compared to patients not receiving EIAED.

Concomitant administration of imatinib mesylate tablets and St. John's Wort led to a 30% reduction in the AUC of imatinib.

Consider alternative therapeutic agents with less enzyme induction potential in patients when rifampin or other CYP3A4 inducers are indicated. Imatinib mesylate tablets doses up to 1200 mg/day (600 mg twice-daily) have been given to patients receiving concomitant strong CYP3A4 inducers [see *Dosage and Administration (2.12)*].

Agents Inhibiting CYP3A Metabolism

There was a significant increase in exposure to imatinib (mean C_{max} and AUC increased by 26% and 40%, respectively) in healthy subjects when imatinib mesylate tablets were coadministered with a single dose of ketoconazole (a CYP3A4 inhibitor). Caution is recommended when administering imatinib mesylate tablets with strong CYP3A4 inhibitors (e.g., ketoconazole, itraconazole, clarithromycin, atazanavir, indinavir, nefazodone, nelfinavir, ritonavir, saquinavir, telithromycin, and voriconazole). Grapefruit juice may also increase plasma concentrations of imatinib and should be avoided.

Interactions with Drugs Metabolized by CYP3A4

Imatinib mesylate tablets increase the mean C_{max} and AUC of simvastatin (CYP3A4 substrate) 2- and 3.5-fold, respectively, suggesting an inhibition of the CYP3A4 by imatinib mesylate tablets. Particular caution is recommended when administering imatinib mesylate tablets with CYP3A4 substrates that have a narrow therapeutic window (e.g., alfentanil, cyclosporine, diergotamine, ergotamine, fentanyl, pimozide, quinidine, sirolimus or tacrolimus).

Imatinib mesylate tablets will increase plasma concentration of other CYP3A4 metabolized drugs (e.g., triazolo-benzodiazepines, dihydropyridine calcium channel blockers, certain HMG-CoA reductase inhibitors, etc.).

Because warfarin is metabolized by CYP2C9 and CYP3A4, patients who require anticoagulation should receive low-molecular weight or standard heparin instead of warfarin.

Interactions with Drugs Metabolized by CYP2D6

Imatinib mesylate tablets increased the mean C_{max} and AUC of metoprolol by approximately 23% suggesting that imatinib mesylate tablets have a weak inhibitory effect on CYP2D6-mediated metabolism. No dose adjustment is necessary, however, caution is recommended when administering imatinib mesylate tablets with CYP2D6 substrates that have a narrow therapeutic window.

Interactions with Acetaminophen

In vitro, imatinib mesylate tablets inhibit the acetaminophen O-glucuronidate pathway (K_i 58.5 μ M). Coadministration of imatinib mesylate tablets (400 mg/day for 8 days) with acetaminophen (1000 mg single dose on day 8) in patients with CML did not result in any changes in the pharmacokinetics of acetaminophen. Imatinib mesylate tablets pharmacokinetics were not altered in the presence of single-dose acetaminophen. There is no pharmacokinetic or safety data on the concomitant use of imatinib mesylate tablets at doses greater than 400 mg/day or the chronic use of concomitant acetaminophen and imatinib mesylate tablets.

13 NONCLINICAL TOXICOLOGY

13.1 Carcinogenesis, Mutagenesis, Impairment of Fertility

In the 2-year rat carcinogenicity study administration of imatinib at 15, 30, and 60 mg/kg/day resulted in a statistically significant reduction in the longevity of males at 60 mg/kg/day and females at greater than or equal to 30 mg/kg/day. Target organs for neoplastic changes were the kidneys (renal tubule and renal pelvis), urinary bladder, urethra, preputial and clitoral gland, small intestine, parathyroid glands, adrenal glands and non-glandular stomach. Neoplastic lesions were not seen at: 30 mg/kg/day for the kidneys, urinary bladder, urethra, small intestine, parathyroid glands, adrenal glands and non-glandular stomach, and 15 mg/kg/day for the preputial and clitoral gland. The papilloma/carcinoma of the preputial/clitoral

gland were noted at 30 and 60 mg/kg/day, representing approximately 0.5 to 4 or 0.3 to 2.4 times the human daily exposure (based on AUC) at 400 mg/day or 800 mg/day, respectively, and 0.4 to 3.0 times the daily exposure in children (based on AUC) at 340 mg/m². The renal tubule adenoma/carcinoma, renal pelvis transitional cell neoplasms, the urinary bladder and urethra transitional cell papillomas, the small intestine adenocarcinomas, the parathyroid glands adenomas, the benign and malignant medullary tumors of the adrenal glands and the non-glandular stomach papillomas/carcinomas were noted at 60 mg/kg/day. The relevance of these findings in the rat carcinogenicity study for humans is not known. Positive genotoxic effects were obtained for imatinib in an *in vitro* mammalian cell assay (Chinese hamster ovary) for clastogenicity (chromosome aberrations) in the presence of metabolic activation. Two intermediates of the manufacturing process, which are also present in the final product, are positive for mutagenesis in the Ames assay. One of these intermediates was also positive in the mouse lymphoma assay. Imatinib was not genotoxic when tested in an *in vitro* bacterial cell assay (Ames test), an *in vitro* mammalian cell assay (mouse lymphoma) and an *in vivo* rat micronucleus assay.

In a study of fertility, male rats were dosed for 70 days prior to mating and female rats were dosed 14 days prior to mating and through to gestational Day 6. Testicular and epididymal weights and percent motile sperm were decreased at 60 mg/kg, approximately three-fourths the maximum clinical dose of 800 mg/day based on body surface area. This was not seen at doses less than or equal to 20 mg/kg (one-fourth the maximum human dose of 800 mg). The fertility of male and female rats was not affected.

Fertility was not affected in the preclinical fertility and early embryonic development study although lower testes and epididymal weights as well as a reduced number of motile sperm were observed in the high dose males rats. In the preclinical pre- and postnatal study in rats, fertility in the first generation offspring was also not affected by imatinib mesylate.

13.2 Animal Toxicology and/or Pharmacology

Toxicities from Long-Term Use

It is important to consider potential toxicities suggested by animal studies, specifically, *liver, kidney, and cardiac toxicity and immunosuppression*. Severe liver toxicity was observed in dogs treated for 2 weeks, with elevated liver enzymes, hepatocellular necrosis, bile duct necrosis, and bile duct hyperplasia. Renal toxicity was observed in monkeys treated for 2 weeks, with focal mineralization and dilation of the renal tubules and tubular nephrosis. Increased BUN and creatinine were observed in several of these animals. An increased rate of opportunistic infections was observed with chronic imatinib treatment in laboratory animal studies. In a 39 week monkey study, treatment with imatinib resulted in worsening of normally suppressed malarial infections in these animals. Lymphopenia was observed in animals (as in humans). Additional long-term toxicities were identified in a 2-year rat study. Histopathological examination of the treated rats that died on study revealed cardiomyopathy (both sexes), chronic progressive nephropathy (females) and preputial gland papilloma as principal causes of death or reasons for sacrifice. Non-neoplastic lesions seen in this 2-year study which were not identified in earlier preclinical studies were the cardiovascular system, pancreas, endocrine organs and teeth. The most important changes included cardiac hypertrophy and dilatation, leading to signs of cardiac insufficiency in some animals.

14 CLINICAL STUDIES

14.1 Chronic Myeloid Leukemia

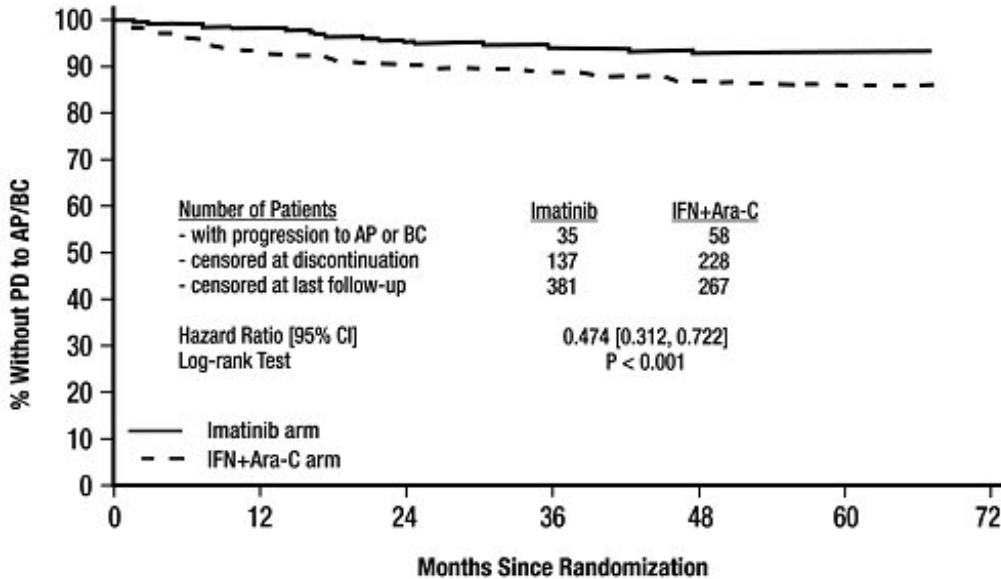
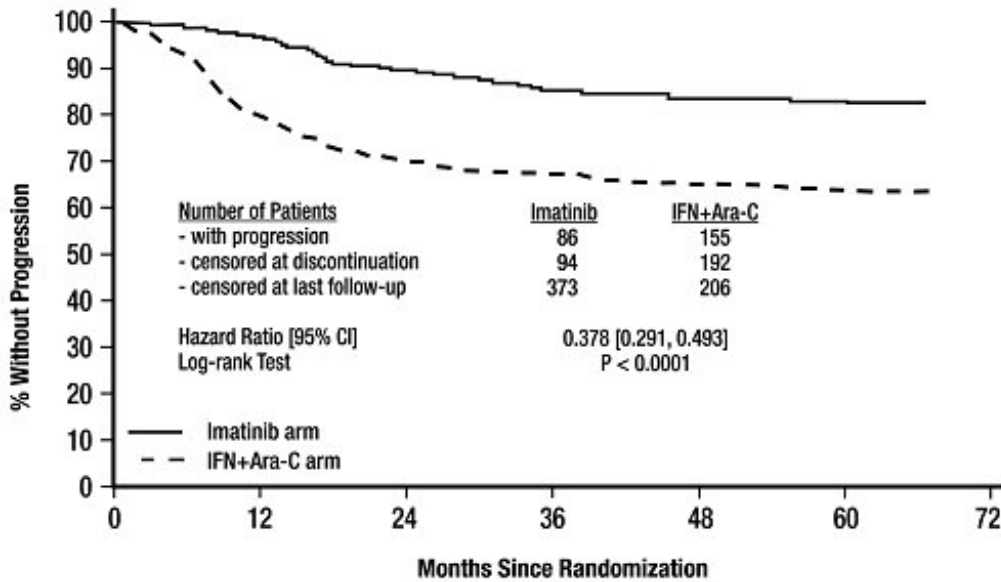
Chronic Phase, Newly Diagnosed

An open-label, multicenter, international randomized Phase 3 study (imatinib mesylate tablets versus IFN+Ara-C) has been conducted in patients with newly diagnosed Philadelphia chromosome positive (Ph⁺) chronic myeloid leukemia (CML) in chronic phase. This study compared treatment with either single-agent imatinib mesylate tablets or a combination of interferon-alpha (IFN) plus cytarabine (Ara-

C). Patients were allowed to cross over to the alternative treatment arm if they failed to show a complete hematologic response (CHR) at 6 months, a major cytogenetic response (MCyR) at 12 months, or if they lost a CHR or MCyR. Patients with increasing WBC or severe intolerance to treatment were also allowed to cross over to the alternative treatment arm with the permission of the study monitoring committee (SMC). In the imatinib mesylate tablets arm, patients were treated initially with 400 mg daily. Dose escalations were allowed from 400 mg daily to 600 mg daily, then from 600 mg daily to 800 mg daily. In the IFN arm, patients were treated with a target dose of IFN of 5 MIU/m²/day subcutaneously in combination with subcutaneous Ara-C 20 mg/m²/day for 10 days/month.

A total of 1,106 patients were randomized from 177 centers in 16 countries, 553 to each arm. Baseline characteristics were well balanced between the two arms. Median age was 51 years (range 18 to 70 years), with 21.9% of patients greater than or equal to 60 years of age. There were 59% males and 41% females; 89.9% Caucasian and 4.7% black patients. At the cut-off for this analysis (7 years after last patient had been recruited), the median duration of first-line treatment was 82 and 8 months in the imatinib mesylate tablets and IFN arm, respectively. The median duration of second-line treatment with imatinib mesylate tablets was 64 months. Sixty percent of patients randomized to imatinib mesylate tablets are still receiving first-line treatment. In these patients, the average dose of imatinib mesylate tablets was 403 mg ± 57 mg. Overall, in patients receiving first-line imatinib mesylate tablets, the average daily dose delivered was 406 mg ± 76 mg. Due to discontinuations and cross-overs, only 2% of patients randomized to IFN were still on first-line treatment. In the IFN arm, withdrawal of consent (14%) was the most frequent reason for discontinuation of first-line therapy, and the most frequent reason for cross over to the imatinib mesylate tablets arm was severe intolerance to treatment (26%) and progression (14%).

The primary efficacy endpoint of the study was progression-free survival (PFS). Progression was defined as any of the following events: progression to accelerated phase or blast crisis (AP/BC), death, loss of CHR or MCyR, or in patients not achieving a CHR an increasing WBC despite appropriate therapeutic management. The protocol specified that the progression analysis would compare the intent to treat (ITT) population: patients randomized to receive imatinib mesylate tablets were compared with patients randomized to receive IFN. Patients that crossed over prior to progression were not censored at the time of cross-over, and events that occurred in these patients following cross-over were attributed to the original randomized treatment. The estimated rate of progression-free survival at 84 months in the ITT population was 81.2% [95% CI: 78, 85] in the imatinib mesylate tablets arm and 60.6% [56, 65] in the IFN arm (p less than 0.0001, log-rank test), (Figure 1). With 7 years follow up there were 93 (16.8%) progression events in the imatinib mesylate tablets arm: 37 (6.7%) progression to AP/BC, 31 (5.6%) loss of MCyR, 15 (2.7%) loss of CHR or increase in WBC and 10 (1.8%) CML unrelated deaths. In contrast, there were 165 (29.8%) events in the IFN+Ara-C arm of which 130 occurred during first-line treatment with IFN-Ara-C. The estimated rate of patients free of progression to accelerated phase (AP) or blast crisis (BC) at 84 months was 92.5% [90, 95] in the imatinib mesylate tablets arm compared to the 85.1%, [82, 89] (p less than or equal to 0.001) in the IFN arm, (Figure 2). The annual rates of any progression events have decreased with time on therapy. The probability of remaining progression free at 60 months was 95% for patients who were in complete cytogenetic response (CCyR) with molecular response (greater than or equal to 3 log reduction in BCR-ABL transcripts as measured by quantitative reverse transcriptase polymerase chain reaction) at 12 months, compared to 89% for patients in complete cytogenetic response but without a major molecular response and 70% in patients who were not in complete cytogenetic response at this time point (p less than 0.001).



A total of 71 (12.8%) and 85 (15.4%) patients died in the imatinib mesylate tablets and IFN+Ara-C group, respectively. At 84 months the estimated overall survival is 86.4% (83, 90) vs. 83.3% (80, 87) in the randomized imatinib mesylate tablets and the IFN+Ara-C group, respectively (p = 0.073 log-rank test). The hazard ratio is 0.750 with 95% CI 0.547-1.028. This time-to-event endpoint may be affected by the high crossover rate from IFN+Ara-C to imatinib mesylate tablets. Major cytogenetic response, hematologic response, evaluation of minimal residual disease (molecular response), time to accelerated phase or blast crisis and survival were main secondary endpoints. Response data are shown in Table 18. Complete hematologic response, major cytogenetic response and complete cytogenetic response were also statistically significantly higher in the imatinib mesylate tablets arm compared to the IFN+Ara-C arm (no cross-over data considered for evaluation of responses). Median time to CCyR in the 454 responders was 6 months (range 2 to 64 months, 25th to 75th percentiles = 3 to 11 months) with 10% of responses seen only after 22 months of therapy.

Table 18: Response in Newly Diagnosed CML Study (84-Month Data)

	Imatinib Mesylate Tablets N = 553	IFN+Ara-C N = 553
(Best Response Rate)		
Hematologic Response*		
CHR Rate n (%)	534 (96.6%) [†]	313 (56.6%) [†]
[95% CI]	[94.7%, 97.9%]	[52.4%, 60.8%]
Cytogenetic Response[‡]		
Major Cytogenetic Response n (%)	472 (85.4%) [†]	93 (16.8%) [†]
[95% CI]	[82.1%, 88.2%]	[13.8%, 20.2%]
Unconfirmed [§]	88.6% [†]	23.3% [†]
Complete Cytogenetic Response n (%)	413 (74.7%) [†]	36 (6.5%) [†]
[95% CI]	[70.8, 78.3]	[4.6, 8.9]
Unconfirmed [§]	82.5% [†]	11.6% [†]

* Hematologic response criteria (all responses to be confirmed after greater than or equal to 4 weeks): WBC less than $10 \times 10^9/L$, platelet less than $450 \times 10^9/L$, myelocyte + metamyelocyte less than 5% in blood, no blasts and promyelocytes in blood, no extramedullary involvement.

[†] p less than 0.001, Fischer's exact test

[‡] Cytogenetic response criteria (confirmed after greater than or equal to 4 weeks): complete (0% Ph+ metaphases) or partial (1%-35%). A major response (0%-35%) combines both complete and partial responses.

[§] Unconfirmed cytogenetic response is based on a single bone marrow cytogenetic evaluation, therefore unconfirmed complete or partial cytogenetic responses might have had a lesser cytogenetic response on a subsequent bone marrow evaluation.

Molecular response was defined as follows

in the peripheral blood, after 12 months of therapy, reduction of greater than or equal to 3 logarithms in the amount of BCR-ABL transcripts (measured by real-time quantitative reverse transcriptase PCR assay) over a standardized baseline. Molecular response was only evaluated in a subset of patients who had a complete cytogenetic response by 12 months or later (N = 333). The molecular response rate in patients who had a complete cytogenetic response in the imatinib mesylate tablets arm was 59% at 12 months and 72% at 24 months.

Physical, functional, and treatment-specific biologic response modifier scales from the FACT-BRM (Functional Assessment of Cancer Therapy - Biologic Response Modifier) instrument were used to assess patient-reported general effects of interferon toxicity in 1,067 patients with CML in chronic phase. After one month of therapy to 6 months of therapy, there was a 13% to 21% decrease in median index from baseline in patients treated with IFN, consistent with increased symptoms of IFN toxicity. There was no apparent change from baseline in median index for patients treated with imatinib mesylate tablets.

An open-label, multicenter, randomized trial (imatinib mesylate tablets versus nilotinib) was conducted to determine the efficacy of imatinib mesylate tablets versus nilotinib in adult patients with cytogenetically confirmed, newly diagnosed Ph+ CML-CP. Patients were within 6 months of diagnosis and were previously untreated for CML-CP, except for hydroxyurea and/or anagrelide. Efficacy was based on a total of 846 patients: 283 patients in the imatinib mesylate tablets 400 mg once-daily group, 282 patients in the nilotinib 300 mg twice-daily group, 281 patients in the nilotinib 400 mg twice-daily group.

Median age was 46 years in the imatinib mesylate tablets group and 47 years in both nilotinib groups, with 12%, 13%, and 10% of patients greater than or equal to 65 years of age in imatinib mesylate tablets 400 mg once-daily, nilotinib 300 mg twice-daily and nilotinib 400 mg twice-daily treatment groups, respectively. There were slightly more male than female patients in all groups (56%, 56%, and 62% in imatinib mesylate tablets 400 mg once-daily, nilotinib 300 mg twice-daily and nilotinib 400 mg twice-daily treatment groups, respectively). More than 60% of all patients were Caucasian, and 25% were

Asian.

The primary data analysis was performed when all 846 patients completed 12 months of treatment or discontinued earlier. Subsequent analyses were done when patients completed 24, 36, 48 and 60 months of treatment or discontinued earlier. The median time on treatment was approximately 61 months in all three treatment groups.

The primary efficacy endpoint was major molecular response (MMR) at 12 months after the start of study medication. MMR was defined as less than or equal to 0.1% BCR-ABL/ABL % by international scale measured by RQ-PCR, which corresponds to a greater than or equal to 3 log reduction of BCR-ABL transcript from standardized baseline. Efficacy endpoints are summarized in Table 19.

Twelve patients in the imatinib mesylate tablets arm progressed to either accelerated phase or blast crises (7 patients within first 6 months, 2 patients within 6 to 12 months, 2 patients within 12 to 18 months and 1 patient within 18 to 24 months) while two patients on the nilotinib arm progressed to either accelerated phase or blast crisis (both within the first 6 months of treatment).

Table 19: Efficacy (MMR and CCyR) of Imatinib Mesylate Tablets Compared to Nilotinib in Newly Diagnosed Ph+ CML-CP

	Imatinib Mesylate Tablets 400 mg once-daily	Nilotinib 300 mg twice-daily
	N = 283	N = 282
MMR at 12 months (95% CI)	22% (17.6, 27.6)	44% (38.4, 50.3)
P-Value *	< 0.0001	
CCyR † by 12 months (95% CI)	65% (59.2, 70.6)	80% (75.0, 84.6)
MMR at 24 months (95% CI)	38% (31.8, 43.4)	62% (55.8, 67.4)
CCyR † by 24 months (95% CI)	77% (71.7, 81.8)	87% (82.4, 90.6)

* CMH test stratified by Sokal risk group

† CCyR: 0% Ph+ metaphases. Cytogenetic responses were based on the percentage of Ph-positive metaphases among greater than or equal to 20 metaphase cells in each bone marrow sample.

By the 60 months, MMR was achieved by 60% of patients on imatinib mesylate tablets and 77% of patients on nilotinib.

Median overall survival was not reached in either arm. At the time of the 60-month final analysis, the estimated survival rate was 91.7% for patients on imatinib mesylate tablets and 93.7% for patients on nilotinib.

Late Chronic Phase CML and Advanced Stage CML

Three international, open-label, single-arm Phase 2 studies were conducted to determine the safety and efficacy of imatinib mesylate tablets in patients with Ph+ CML: 1) in the chronic phase after failure of IFN therapy, 2) in accelerated phase disease, or 3) in myeloid blast crisis. About 45% of patients were women and 6% were black. In clinical studies, 38% to 40% of patients were greater than or equal to 60 years of age and 10% to 12% of patients were greater than or equal to 70 years of age.

Chronic Phase, Prior Interferon-Alpha Treatment

532 patients were treated at a starting dose of 400 mg; dose escalation to 600 mg was allowed. The patients were distributed in three main categories according to their response to prior interferon: failure to achieve (within 6 months), or loss of a complete hematologic response (29%), failure to achieve (within 1 year) or loss of a major cytogenetic response (35%), or intolerance to interferon (36%). Patients had received a median of 14 months of prior IFN therapy at doses greater than or equal to 25 x 10⁶ IU/week and were all in late chronic phase, with a median time from diagnosis of 32 months.

Effectiveness was evaluated on the basis of the rate of hematologic response and by bone marrow exams to assess the rate of major cytogenetic response (up to 35% Ph+ metaphases) or complete cytogenetic response (0% Ph+ metaphases). Median duration of treatment was 29 months with 81% of patients treated for greater than or equal to 24 months (maximum = 31.5 months). Efficacy results are reported in Table 20. Confirmed major cytogenetic response rates were higher in patients with IFN intolerance (66%) and cytogenetic failure (64%), than in patients with hematologic failure (47%). Hematologic response was achieved in 98% of patients with cytogenetic failure, 94% of patients with hematologic failure, and 92% of IFN-intolerant patients.

Accelerated Phase

235 patients with accelerated phase disease were enrolled. These patients met one or more of the following criteria: greater than or equal to 15% - less than 30% blasts in PB or BM; greater than or equal to 30% blasts + promyelocytes in PB or BM; greater than or equal to 20% basophils in PB; and less than $100 \times 10^9/L$ platelets. The first 77 patients were started at 400 mg, with the remaining 158 patients starting at 600 mg.

Effectiveness was evaluated primarily on the basis of the rate of hematologic response, reported as either complete hematologic response, no evidence of leukemia (i.e., clearance of blasts from the marrow and the blood, but without a full peripheral blood recovery as for complete responses), or return to chronic phase CML. Cytogenetic responses were also evaluated. Median duration of treatment was 18 months with 45% of patients treated for greater than or equal to 24 months (maximum = 35 months). Efficacy results are reported in Table 20. Response rates in accelerated phase CML were higher for the 600 mg dose group than for the 400 mg group: hematologic response (75% vs. 64%), confirmed and unconfirmed major cytogenetic response (31% vs. 19%).

Myeloid Blast Crisis

260 patients with myeloid blast crisis were enrolled. These patients had greater than or equal to 30% blasts in PB or BM and/or extramedullary involvement other than spleen or liver; 95 (37%) had received prior chemotherapy for treatment of either accelerated phase or blast crisis (“pretreated patients”) whereas 165 (63%) had not (“untreated patients”). The first 37 patients were started at 400 mg; the remaining 223 patients were started at 600 mg.

Effectiveness was evaluated primarily on the basis of rate of hematologic response, reported as either complete hematologic response, no evidence of leukemia, or return to chronic phase CML using the same criteria as for the study in accelerated phase. Cytogenetic responses were also assessed. Median duration of treatment was 4 months with 21% of patients treated for greater than or equal to 12 months and 10% for greater than or equal to 24 months (maximum = 35 months). Efficacy results are reported in Table 20. The hematologic response rate was higher in untreated patients than in treated patients (36% vs. 22%, respectively) and in the group receiving an initial dose of 600 mg rather than 400 mg (33% vs. 16%). The confirmed and unconfirmed major cytogenetic response rate was also higher for the 600 mg dose group than for the 400 mg dose group (17% vs. 8%).

Table 20: Response in CML Studies

	Chronic Phase IFN Failure (N = 532) 400 mg	Accelerated Phase (N = 235) 600 mg N = 158 400 mg N = 77	Myeloid Blast Crisis (N = 260) 600 mg N = 223 400 mg N = 37
	% of patients [CI 95%]		
Hematologic Response*	95% [92.3-96.3]	71% [64.8-76.8]	31% [25.2-36.8]
Complete Hematologic Response (CHR)	95%	38%	7%

No Evidence of Leukemia (NEL)	Not applicable	13%	5%
Return to Chronic Phase (RTC)	Not applicable	20%	18%
Major Cytogenetic Response[†]	60% [55.3-63.8]	21% [16.2-27.1]	7% [4.5-11.2]
(Unconfirmed [‡])	(65%)	(27%)	(15%)
Complete [§] (Unconfirmed [‡])	39% (47%)	16% (20%)	2% (7%)

* Hematologic response criteria (all responses to be confirmed after greater than or equal to 4 weeks): CHR: Chronic phase study [WBC less than $10 \times 10^9/L$, platelet less than $450 \times 10^9/L$, myelocytes + metamyelocytes less than 5% in blood, no blasts and promyelocytes in blood, basophils less than 20%, no extramedullary involvement] and in the accelerated and blast crisis studies [ANC greater than or equal to $1.5 \times 10^9/L$, platelets greater than or equal to $100 \times 10^9/L$, no blood blasts, BM blasts less than 5% and no extramedullary disease] NEL: Same criteria as for CHR but ANC greater than or equal to $1 \times 10^9/L$ and platelets greater than or equal to $20 \times 10^9/L$ (accelerated and blast crisis studies) RTC: less than 15% blasts BM and PB, less than 30% blasts + promyelocytes in BM and PB, less than 20% basophils in PB, no extramedullary disease other than spleen and liver (accelerated and blast crisis studies). BM = bone marrow, PB = peripheral blood

† Cytogenetic response criteria (confirmed after greater than or equal to 4 weeks): complete (0% Ph+ metaphases) or partial (1%-35%). A major response (0%-35%) combines both complete and partial responses.

‡ Unconfirmed cytogenetic response is based on a single bone marrow cytogenetic evaluation, therefore unconfirmed complete or partial cytogenetic responses might have had a lesser cytogenetic response on a subsequent bone marrow evaluation.

§ Complete cytogenetic response confirmed by a second bone marrow cytogenetic evaluation performed at least 1 month after the initial bone marrow study.

The median time to hematologic response was 1 month. In late chronic phase CML, with a median time from diagnosis of 32 months, an estimated 87.8% of patients who achieved MCyR maintained their response 2 years after achieving their initial response. After 2 years of treatment, an estimated 85.4% of patients were free of progression to AP or BC, and estimated overall survival was 90.8% [88.3, 93.2]. In accelerated phase, median duration of hematologic response was 28.8 months for patients with an initial dose of 600 mg (16.5 months for 400 mg). An estimated 63.8% of patients who achieved MCyR were still in response 2 years after achieving initial response. The median survival was 20.9 [13.1, 34.4] months for the 400 mg group and was not yet reached for the 600 mg group ($p = 0.0097$). An estimated 46.2% [34.7, 57.7] vs. 65.8% [58.4, 73.3] of patients were still alive after 2 years of treatment in the 400 mg vs. 600 mg dose groups, respectively. In blast crisis, the estimated median duration of hematologic response is 10 months. An estimated 27.2% [16.8, 37.7] of hematologic responders maintained their response 2 years after achieving their initial response. Median survival was 6.9 [5.8, 8.6] months, and an estimated 18.3% [13.4, 23.3] of all patients with blast crisis were alive 2 years after start of study.

Efficacy results were similar in men and women and in patients younger and older than age 65. Responses were seen in black patients, but there were too few black patients to allow a quantitative comparison.

14.2 Pediatric CML

A total of 51 pediatric patients with newly diagnosed and untreated CML in chronic phase were enrolled in an open-label, multicenter, single-arm Phase 2 trial. Patients were treated with imatinib mesylate tablets $340 \text{ mg/m}^2/\text{day}$, with no interruptions in the absence of dose limiting toxicity. Complete hematologic response (CHR) was observed in 78% of patients after 8 weeks of therapy. The complete cytogenetic response rate (CCyR) was 65%, comparable to the results observed in adults. Additionally, partial cytogenetic response (PCyR) was observed in 16%. The majority of patients who achieved a CCyR developed the CCyR between months 3 and 10 with a median time to response based on the Kaplan-Meier estimate of 6.74 months. Patients were allowed to be removed from protocol therapy to undergo alternative therapy including hematopoietic stem cell transplantation. Thirty-one children received stem cell transplantation. Of the 31 children, 5 were transplanted after disease progression on study and 1 withdrew from study during first week treatment and received transplant approximately 4

months after withdrawal. Twenty-five children withdrew from protocol therapy to undergo stem cell transplant after receiving a median of 9 twenty-eight day courses (range 4 to 24). Of the 25 patients 13 (52%) had CCyR and 5 (20%) had PCyR at the end of protocol therapy.

One open-label, single-arm study enrolled 14 pediatric patients with Ph+ chronic phase CML recurrent after stem cell transplant or resistant to interferon-alpha therapy. These patients had not previously received imatinib mesylate tablets and ranged in age from 3 to 20 years old; 3 were 3 to 11 years old, 9 were 12 to 18 years old, and 2 were greater than 18 years old. Patients were treated at doses of 260 mg/m²/day (n = 3), 340 mg/m²/day (n = 4), 440 mg/m²/day (n = 5) and 570 mg/m²/day (n = 2). In the 13 patients for whom cytogenetic data are available, 4 achieved a major cytogenetic response, 7 achieved a complete cytogenetic response, and 2 had a minimal cytogenetic response.

In a second study, 2 of 3 patients with Ph+ chronic phase CML resistant to interferon-alpha therapy achieved a complete cytogenetic response at doses of 242 and 257 mg/m²/day.

14.3 Acute Lymphoblastic Leukemia

A total of 48 Philadelphia chromosome positive acute lymphoblastic leukemia (Ph+ ALL) patients with relapsed/refractory disease were studied, 43 of whom received the recommended imatinib mesylate tablets dose of 600 mg/day. In addition 2 patients with relapsed/refractory Ph+ ALL received imatinib mesylate tablets 600 mg/day in a Phase 1 study.

Confirmed and unconfirmed hematologic and cytogenetic response rates for the 43 relapsed/refractory Ph+ ALL Phase 2 study patients and for the 2 Phase 1 patients are shown in Table 21. The median duration of hematologic response was 3.4 months and the median duration of MCyR was 2.3 months.

Table 21: Effect of Imatinib Mesylate Tablets on Relapsed/Refractory Ph+ ALL

	Phase 2 Study (N = 43) n (%)	Phase 1 Study (N = 2) n (%)
CHR	8 (19)	2 (100)
NEL	5 (12)	
RTC/PHR	11 (26)	
MCyR	15 (35)	
CCyR	9 (21)	
PCyR	6 (14)	

14.5 Myelodysplastic/Myeloproliferative Diseases

An open-label, multicenter, Phase 2 clinical trial was conducted testing imatinib mesylate tablets in diverse populations of patients suffering from life-threatening diseases associated with Abl, Kit or PDGFR protein tyrosine kinases. This study included 7 patients with MDS/MPD. These patients were treated with imatinib mesylate tablets 400 mg daily. The ages of the enrolled patients ranged from 20 to 86 years. A further 24 patients with MDS/MPD aged 2 to 79 years were reported in 12 published case reports and a clinical study. These patients also received imatinib mesylate tablets at a dose of 400 mg daily with the exception of three patients who received lower doses. Of the total population of 31 patients treated for MDS/MPD, 14 (45%) achieved a complete hematological response and 12 (39%) a major cytogenetic response (including 10 with a complete cytogenetic response). Sixteen patients had a translocation, involving chromosome 5q33 or 4q12, resulting in a PDGFR gene re-arrangement. All of these patients responded hematologically (13 completely). Cytogenetic response was evaluated in 12 out of 14 patients, all of whom responded (10 patients completely). Only 1 (7%) out of the 14 patients without a translocation associated with PDGFR gene re-arrangement achieved a complete hematological response and none achieved a major cytogenetic response. A further patient with a PDGFR gene re-arrangement in molecular relapse after bone marrow transplant responded molecularly.

Median duration of therapy was 12.9 months (0.8 to 26.7) in the 7 patients treated within the Phase 2 study and ranged between 1 week and more than 18 months in responding patients in the published literature. Results are provided in Table 22. Response durations of Phase 2 study patients ranged from 141+ days to 457+ days.

Table 22: Response in MDS/MPD

	Number of Patients N	Complete Hematologic Response n (%)	Major Cytogenetic Response n (%)
Overall Population	31	14 (45)	12 (39)
Chromosome 5 Translocation	14	11 (79)	11 (79)
Chromosome 4 Translocation	2	2 (100)	1 (50)
Others / no Translocation	14	1 (7)	0
Molecular Relapse	1	NE *	NE *

* NE: Not Evaluable

14.6 Aggressive Systemic Mastocytosis

One open-label, multicenter, Phase 2 study was conducted testing imatinib mesylate tablets in diverse populations of patients with life-threatening diseases associated with Abl, Kit or PDGFR protein tyrosine kinases. This study included 5 patients with ASM treated with 100 mg to 400 mg of imatinib mesylate tablets daily. These 5 patients ranged from 49 to 74 years of age. In addition to these 5 patients, 10 published case reports and case series describe the use of imatinib mesylate tablets in 23 additional patients with ASM aged 26 to 85 years who also received 100 mg to 400 mg of imatinib mesylate tablets daily.

Cytogenetic abnormalities were evaluated in 20 of the 28 ASM patients treated with imatinib mesylate tablets from the published reports and in the Phase 2 study. Seven of these 20 patients had the FIP1L1-PDGFR α fusion kinase (or CHIC2 deletion). Patients with this cytogenetic abnormality were predominantly males and had eosinophilia associated with their systemic mast cell disease. Two patients had a Kit mutation in the juxtamembrane region (one Phe522Cys and one K509I) and four patients had a D816V c-Kit mutation (not considered sensitive to imatinib mesylate tablets), one with concomitant CML.

Of the 28 patients treated for ASM, 8 (29%) achieved a complete hematologic response and 9 (32%) a partial hematologic response (61% overall response rate). Median duration of imatinib mesylate tablets therapy for the 5 ASM patients in the Phase 2 study was 13 months (range 1.4 to 22.3 months) and between 1 month and more than 30 months in the responding patients described in the published medical literature. A summary of the response rates to imatinib mesylate tablets in ASM is provided in Table 23. Response durations of literature patients ranged from 1+ to 30+ months.

Table 23: Response in ASM

Cytogenetic Abnormality	Number of Patients N	Complete Hematologic Response N (%)	Partial Hematologic Response N (%)
FIP1L1-PDGFR α Fusion Kinase (or CHIC2 Deletion)	7	7 (100)	0
Juxtamembrane Mutation	2	0	2 (100)
Unknown or No Cytogenetic	15	0	7 (44)

Abnormality Detected			
D816V Mutation	4	1 * (25)	0
Total	28	8 (29)	9 (32)

* Patient had concomitant CML and ASM

Imatinib mesylate tablets have not been shown to be effective in patients with less aggressive forms of systemic mastocytosis (SM). Imatinib mesylate tablets are therefore not recommended for use in patients with cutaneous mastocytosis, indolent systemic mastocytosis (smoldering SM or isolated bone marrow mastocytosis), SM with an associated clonal hematological non-mast cell lineage disease, mast cell leukemia, mast cell sarcoma or extracutaneous mastocytoma. Patients that harbor the D816V mutation of c-Kit are not sensitive to imatinib mesylate tablets and should not receive imatinib mesylate tablets.

14.7 Hypereosinophilic Syndrome/Chronic Eosinophilic Leukemia

One open-label, multicenter, Phase 2 study was conducted testing imatinib mesylate tablets in diverse populations of patients with life-threatening diseases associated with Abl, Kit or PDGFR protein tyrosine kinases. This study included 14 patients with Hypereosinophilic Syndrome/Chronic Eosinophilic Leukemia (HES/CEL). HES patients were treated with 100 mg to 1000 mg of imatinib mesylate tablets daily. The ages of these patients ranged from 16 to 64 years. A further 162 patients with HES/CEL aged 11 to 78 years were reported in 35 published case reports and case series. These patients received imatinib mesylate tablets at doses of 75 mg to 800 mg daily. Hematologic response rates are summarized in Table 24. Response durations for literature patients ranged from 6+ weeks to 44 months.

Table 24: Response in HES/CEL

Cytogenetic Abnormality	Number of Patients	Complete Hematological Response N (%)	Partial Hematological Response N (%)
Positive FIP1L1-PDGFR α Fusion Kinase	61	61 (100)	0
Negative FIP1L1-PDGFR α Fusion Kinase	56	12 (21)	9 (16)
Unknown Cytogenetic Abnormality	59	34 (58)	7 (12)
Total	176	107 (61)	23 (13)

14.8 Dermatofibrosarcoma Protuberans

Dermatofibrosarcoma Protuberans (DFSP) is a cutaneous soft tissue sarcoma. It is characterized by a translocation of chromosomes 17 and 22 that results in the fusion of the collagen type 1 alpha 1 gene and the PDGF B gene.

An open-label, multicenter, Phase 2 study was conducted testing imatinib mesylate tablets in a diverse population of patients with life-threatening diseases associated with Abl, Kit or PDGFR protein tyrosine kinases. This study included 12 patients with DFSP who were treated with imatinib mesylate tablets 800 mg daily (age range 23 to 75 years). DFSP was metastatic, locally recurrent following initial surgical resection and not considered amenable to further surgery at the time of study entry. A further 6 DFSP patients treated with imatinib mesylate tablets are reported in 5 published case reports, their ages ranging from 18 months to 49 years. The total population treated for DFSP therefore comprises 18 patients, 8 of them with metastatic disease. The adult patients reported in the published literature were treated with either 400 mg (4 cases) or 800 mg (1 case) imatinib mesylate tablets daily. A single pediatric patient received 400 mg/m²/daily, subsequently increased to 520 mg/m²/daily. Ten patients had the PDGF B gene re-arrangement, 5 had no available cytogenetics and 3 had complex cytogenetic

abnormalities. Responses to treatment are described in Table 25.

Table 25: Response in DFSP

	Number of Patients (N = 18)	%
Complete Response	7	39
Partial Response *	8	44
Total Responders	15	83

* 5 patients made disease free by surgery

Twelve of these 18 patients either achieved a complete response (7 patients) or were made disease free by surgery after a partial response (5 patients, including one child) for a total complete response rate of 67%. A further 3 patients achieved a partial response, for an overall response rate of 83%. Of the 8 patients with metastatic disease, five responded (62%), three of them completely (37%). For the 10 study patients with the PDGF B gene re-arrangement, there were 4 complete and 6 partial responses. The median duration of response in the Phase 2 study was 6.2 months, with a maximum duration of 24.3 months, while in the published literature it ranged between 4 weeks and more than 20 months.

15 REFERENCES

1. OSHA Hazardous Drugs. *OSHA*. [Accessed on 20-September-2013, from <http://www.osha.gov/SLTC/hazardousdrugs/index.html>]

16 HOW SUPPLIED/STORAGE AND HANDLING

Imatinib Mesylate Tablets are available containing imatinib mesylate equivalent to 100 mg or 400 mg of imatinib.

The 100 mg tablets are brown-orange, film-coated, round, scored tablets debossed with **M** on one side of the tablet and **I** above the score and **100** below the score on the other side. They are available as follows:

NDC 42292-043-03 – Unit dose blister packages of 30 (3 cards of 10 tablets each).

The 400 mg tablets are brown-orange, film-coated, oval, scored tablets debossed with **MYLAN** on one side of the tablet and **I** on the left of the score and **400** on the right of the score on the other side. They are available as follows:

NDC 42292-044-03 – Unit dose blister packages of 30 (3 cards of 10 tablets each).

**Store at 20° to 25°C (68° to 77°F). [See USP Controlled Room Temperature.]
Protect from moisture.**

Do not crush imatinib mesylate tablets. Avoid direct contact of crushed tablets with the skin or mucous membranes. If such contact occurs, wash thoroughly as outlined in the references. Avoid exposure to crushed tablets.

17 PATIENT COUNSELING INFORMATION

Dosing and Administration: Advise patients to take imatinib mesylate tablets exactly as prescribed, not to change their dose or to stop taking imatinib mesylate tablets unless they are told to do so by their doctor. If the patient missed a dose of imatinib mesylate tablets, the patient should take the next scheduled dose at its regular time. The patient should not take two doses at the same time. Advise patients to take imatinib mesylate tablets with a meal and a large glass of water [*see Dosage and Administration (2.1)*].

Fluid Retention and Edema: Inform patients of the possibility of developing edema and fluid retention.

Advise patients to contact their health care provider if unexpected rapid weight gain occurs [see *Warnings and Precautions (5.1)*] .

Hepatotoxicity: Inform patients of the possibility of developing liver function abnormalities and serious hepatic toxicity. Advise patients to immediately contact their health care provider if signs of liver failure occur, including jaundice, anorexia, bleeding or bruising [see *Warnings and Precautions (5.4)*] .

Pregnancy and Breastfeeding: Advise patients to inform their doctor if they are or think they may be pregnant. Advise women of reproductive potential to avoid becoming pregnant while taking imatinib mesylate tablets. Female patients of reproductive potential taking imatinib mesylate tablets should use highly effective contraception during treatment and for fourteen days after stopping treatment with imatinib mesylate tablets [see *Use in Specific Populations (8.3)*] . Avoid breastfeeding during treatment and for 1 month after the last dose [see *Use in Specific Populations (8.2)*] .

Drug Interactions: Imatinib mesylate tablets and certain other medicines such as warfarin, erythromycin, and phenytoin, including over-the-counter medications such as herbal products, can interact with each other. Advise patients to tell their doctor if they are taking or plan to take iron supplements. Avoid grapefruit juice and other foods known to inhibit CYP3A4 while taking imatinib mesylate tablets [see *Drug Interactions (7)*] .

Pediatric: Advise patients that growth retardation has been reported in children and pre-adolescents receiving imatinib mesylate tablets. The long term effects of prolonged treatment with imatinib mesylate tablets on growth in children are unknown. Therefore, closely monitor growth in children under imatinib mesylate tablet treatment [see *Warnings and Precautions (5.11)*] .

Driving and Using Machines: Advise patients that they may experience side effects such as dizziness, blurred vision or somnolence during treatment with imatinib mesylate tablets. Therefore, caution patients about driving a car or operating machinery [see *Warnings and Precautions (5.13)*] .

Manufactured by:

Mylan Pharmaceuticals Inc.

Morgantown, WV 26505 U.S.A.

Distributed by:

Mylan Institutional Inc.

Rockford, IL 61103 U.S.A.

S-12511 R3

4/20

PRINCIPAL DISPLAY PANEL – 100 mg

NDC 42292-043-03

**Imatinib
Mesylate
Tablets
100 mg***

30 Tablets (3 x 10)

*Each film-coated tablet contains imatinib mesylate equivalent to 100 mg of imatinib.

Usual Dosage: See accompanying prescribing information.

Store at 20° to 25°C (68° to 77°F).
[See USP Controlled Room Temperature.]
Protect from moisture.

Manufactured by:
Mylan Pharmaceuticals Inc.
Morgantown, WV 26505 U.S.A.

Rx only

S-12513

Distributed by:

Mylan Institutional Inc.

Rockford, IL 61103 U.S.A.

This unit dose package is not child resistant.

For institutional use only.

Keep this and all drugs out of the reach of children.

This container provides light-resistance.

See window for lot number and expiration date.

NDC 42292-043-03

Imatinib Mesylate
Tablets
100 mg*

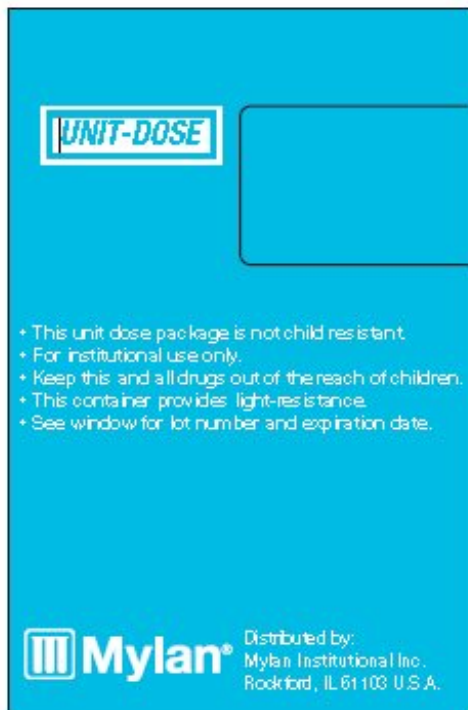
NDC 42292-043-03

Imatinib Mesylate
Tablets **100 mg***

Rx only 30 Tablets (3 x 10)

*Each film-coated tablet contains imatinib mesylate equivalent to 100 mg of imatinib.
Usual Dosage: See accompanying prescribing information.
Store at 20° to 25°C (68° to 77°F).
[See USP Controlled Room Temperature.]
Protect from moisture.
Manufactured by:
Mylan Pharmaceuticals Inc.
Morgantown, WV 26505 U.S.A.

Mylan | Mylan.com S-12513



PRINCIPAL DISPLAY PANEL – 400 mg

NDC 42292-044-03

**Imatinib
Mesylate
Tablets
400 mg***

30 Tablets (3 x 10)

*Each film-coated tablet contains
imatinib mesylate equivalent to
400 mg of imatinib.

Usual Dosage: See accompanying prescribing information.

**Store at 20° to 25°C (68° to 77°F).
[See USP Controlled Room Temperature.]
Protect from moisture.**

Manufactured by:
Mylan Pharmaceuticals Inc.
Morgantown, WV 26505 U.S.A.

Rx only

S-12514

Distributed by:

Mylan Institutional Inc.

Rockford, IL 61103 U.S.A.

This unit dose package is not child resistant.

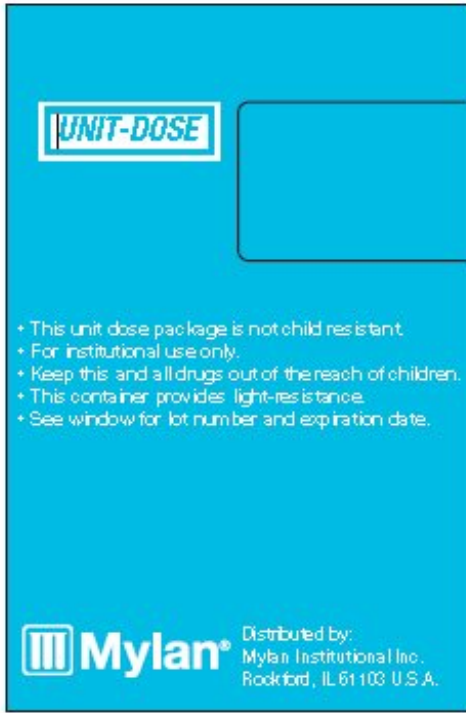
For institutional use only.

Keep this and all drugs out of the reach of children.

This container provides light-resistance.

See window for lot number and expiration date.





IMATINIB MESYLATE

imatinib tablet, film coated

Product Information

Product Type	HUMAN PRESCRIPTION DRUG	Item Code (Source)	NDC:42292-043(NDC:0378-2245)
Route of Administration	ORAL		

Active Ingredient/Active Moiety

Ingredient Name	Basis of Strength	Strength
-----------------	-------------------	----------

IMATINIB MESYLATE (UNII: 8A1O1M485B) (IMATINIB - UNII:BKJ8M8G5HI)	IMATINIB	100 mg		
Inactive Ingredients				
Ingredient Name		Strength		
SILICON DIOXIDE (UNII: ETJ7Z6XBU4)				
CROSPVIDONE, UNSPECIFIED (UNII: 2S7830E561)				
HYPROMELLOSE 2910 (3 MPA.S) (UNII: 0VUT3PMY82)				
MAGNESIUM STEARATE (UNII: 70097M6I30)				
MICROCRYSTALLINE CELLULOSE (UNII: OP1R32D61U)				
POLYETHYLENE GLYCOL 3350 (UNII: G2M7P15E5P)				
POLYVINYL ALCOHOL, UNSPECIFIED (UNII: 532B59J990)				
FERRIC OXIDE RED (UNII: 1K09F3G675)				
TALC (UNII: 7SEV7J4R1U)				
TITANIUM DIOXIDE (UNII: 15FIX9V2JP)				
FERRIC OXIDE YELLOW (UNII: EX438O2MRT)				
Product Characteristics				
Color	brown (brown-orange)	Score	2 pieces	
Shape	ROUND	Size	9mm	
Flavor		Imprint Code	M;I;100	
Contains				
Packaging				
#	Item Code	Package Description	Marketing Start Date	Marketing End Date
1	NDC:42292-043-03	30 in 1 CARTON	09/07/2017	
1	NDC:42292-043-01	1 in 1 BLISTER PACK; Type 0: Not a Combination Product		
Marketing Information				
Marketing Category	Application Number or Monograph Citation	Marketing Start Date	Marketing End Date	
ANDA	ANDA204644	09/07/2017		

IMATINIB MESYLATE

imatinib tablet, film coated

Product Information			
Product Type	HUMAN PRESCRIPTION DRUG	Item Code (Source)	NDC:42292-044(NDC:0378-2246)
Route of Administration	ORAL		
Active Ingredient/Active Moiety			
Ingredient Name		Basis of Strength	Strength
IMATINIB MESYLATE (UNII: 8A1O1M485B) (IMATINIB - UNII:BKJ8M8G5HI)		IMATINIB	400 mg

Inactive Ingredients

Ingredient Name	Strength
SILICON DIOXIDE (UNII: ETJ7Z6XBU4)	
CROSPVIDONE, UNSPECIFIED (UNII: 2S7830E561)	
HYPROMELLOSE 2910 (3 MPA.S) (UNII: 0VUT3PMY82)	
MAGNESIUM STEARATE (UNII: 70097M6I30)	
MICROCRYSTALLINE CELLULOSE (UNII: OP1R32D61U)	
POLYETHYLENE GLYCOL 3350 (UNII: G2M7P15E5P)	
POLYVINYL ALCOHOL, UNSPECIFIED (UNII: 532B59J990)	
FERRIC OXIDE RED (UNII: 1K09F3G675)	
TALC (UNII: 7SEV7J4R1U)	
TITANIUM DIOXIDE (UNII: 15FIX9V2JP)	
FERRIC OXIDE YELLOW (UNII: EX438O2MRT)	

Product Characteristics

Color	brown (brown-orange)	Score	2 pieces
Shape	OVAL	Size	19mm
Flavor		Imprint Code	MYLAN;I;400
Contains			

Packaging

#	Item Code	Package Description	Marketing Start Date	Marketing End Date
1	NDC:42292-044-03	30 in 1 CARTON	09/07/2017	
1	NDC:42292-044-01	1 in 1 BLISTER PACK; Type 0: Not a Combination Product		

Marketing Information

Marketing Category	Application Number or Monograph Citation	Marketing Start Date	Marketing End Date
ANDA	ANDA204644	09/07/2017	

Labeler - Mylan Institutional Inc. (039615992)

Revised: 5/2020

Mylan Institutional Inc.