

BETAMETHASONE VALERATE- betamethasone valerate ointment
RedPharm Drug

BETAMETHASONE VALERATE CREAM USP, 0.1%

BETAMETHASONE VALERATE OINTMENT USP, 0.1%

(Potency expressed as betamethasone)

Rx only

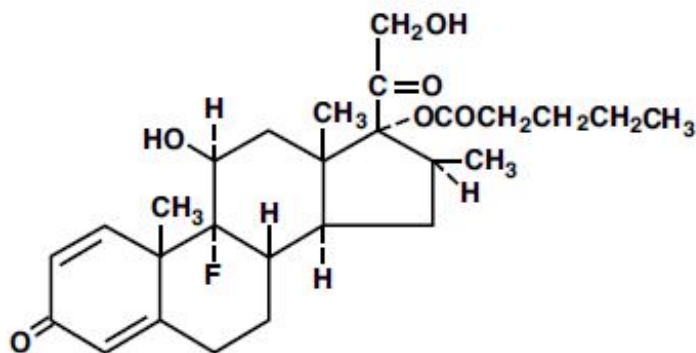
FOR DERMATOLOGIC USE ONLY.

NOT FOR OPHTHALMIC USE.

DESCRIPTION

Betamethasone Valerate Cream and Ointment contain betamethasone valerate USP, a synthetic adrenocorticosteroid for dermatologic use. Betamethasone, an analog of prednisolone, has a high degree of glucocorticoid activity and a slight degree of mineralocorticoid activity.

Betamethasone valerate is a white to practically white odorless crystalline powder practically insoluble in water, freely soluble in acetone and chloroform, soluble in alcohol, and slightly soluble in benzene and ether. Chemically, it is 9-fluoro-11 β ,17,21-trihydroxy-16 β -methylpregna-1,4-diene-3,20-dione 17-valerate. The structural formula is:



Molecular Formula: C₂₇H₃₇FO₆

Molecular Weight: 476.59

Each gram of the 0.1% Cream contains 1.2 mg betamethasone valerate (equivalent to 1 mg betamethasone) in a soft, white, hydrophilic cream of purified water, mineral oil, sodium phosphate monobasic (monohydrate), white petrolatum, polyethylene glycol 1000, cetareth-15, stearyl alcohol, cetyl alcohol, propylene glycol, phosphoric acid (to adjust pH, if required); chlorocresol is present as a preservative.

Each gram of the 0.1% Ointment contains 1.2 mg betamethasone valerate (equivalent to 1 mg betamethasone) in an ointment base of white petrolatum, mineral oil, and hydrogenated lanolin.

CLINICAL PHARMACOLOGY

Topical corticosteroids share anti-inflammatory, antipruritic and vasoconstrictive actions.

The mechanism of anti-inflammatory activity of the topical corticosteroids is unclear. Various laboratory methods, including vasoconstrictor assays, are used to compare and predict potencies and/or clinical efficacies of the topical corticosteroids. There is some evidence to suggest that a recognizable correlation exists between vasoconstrictor potency and therapeutic efficacy in man.

Pharmacokinetics

The extent of percutaneous absorption of topical corticosteroids is determined by many factors including the vehicle, the integrity of the epidermal barrier, and the use of occlusive dressings.

Topical corticosteroids can be absorbed from normal intact skin. Inflammation and/or other disease processes in the skin increase percutaneous absorption. Occlusive dressings substantially increase the percutaneous absorption of topical corticosteroids. Thus, occlusive dressings may be a valuable therapeutic adjunct for treatment of resistant dermatoses.

Once absorbed through the skin, topical corticosteroids are handled through pharmacokinetic pathways similar to systemically administered corticosteroids. Corticosteroids are bound to plasma proteins in varying degrees. Corticosteroids are metabolized primarily in the liver and are then excreted by the kidneys. Some of the topical corticosteroids and their metabolites are also excreted into the bile.

INDICATIONS AND USAGE

Topical corticosteroids are indicated for the relief of the inflammatory and pruritic manifestations of corticosteroid-responsive dermatoses.

CONTRAINDICATIONS

Topical corticosteroids are contraindicated in those patients with a history of hypersensitivity to any of the components of the preparation.

PRECAUTIONS

General

Systemic absorption of topical corticosteroids has produced reversible hypothalamic-pituitary-adrenal (HPA) axis suppression, manifestations of Cushing's syndrome, hyperglycemia, and glucosuria in some patients.

Conditions which augment systemic absorption include the application of the more potent steroids, use over large surface areas, prolonged use, and the addition of occlusive dressings.

Therefore, patients receiving a large dose of a potent topical steroid applied to a large surface area should be evaluated periodically for evidence of HPA axis suppression by using the urinary free cortisol and ACTH stimulation tests. If HPA axis suppression is noted, an attempt should be made to withdraw the drug, to reduce the frequency of application, or substitute to a less potent steroid.

Recovery of HPA axis function is generally prompt and complete upon discontinuation of the drug. Infrequently, signs and symptoms of steroid withdrawal may occur, requiring supplemental systemic corticosteroids.

Pediatric patients may absorb proportionally larger amounts of topical corticosteroids and thus be more susceptible to systemic toxicity (See **PRECAUTIONS—Pediatric Use**).

If irritation develops, topical corticosteroids should be discontinued and appropriate therapy instituted.

In the presence of dermatological infections, the use of an appropriate antifungal or antibacterial agent should be instituted. If a favorable response does not occur promptly, the corticosteroid should be discontinued until the infection has been adequately controlled.

Information for Patients

Patients using topical corticosteroids should receive the following information and instructions:

1. This medication is to be used as directed by the physician.. It is for external use only. Avoid contact with the eyes.
2. Patients should be advised not to use this medication for any disorder other than that for which it was prescribed.
3. The treated skin area should not be bandaged or otherwise covered or wrapped as to be occlusive unless directed by the physician.
4. Patients should report any signs of local adverse reactions especially under occlusive dressing.
5. Parents of pediatric patients should be advised not to use tight-fitting diapers or plastic pants on a child being treated in the diaper area, as these garments may constitute occlusive dressings.

Laboratory tests

The following tests may be helpful in evaluating the HPA axis suppression:

Urinary free cortisol test

ACTH stimulation test

Carcinogenesis, Mutagenesis and Impairment of Fertility

Long-term animal studies have not been performed to evaluate the carcinogenic potential or the effect on fertility of topical corticosteroids.

Studies to determine mutagenicity with prednisolone and hydrocortisone have revealed negative results.

Pregnancy

Teratogenic Effects— *Pregnancy Category C*

Corticosteroids are generally teratogenic in laboratory animals when administered systemically at relatively low dosage levels. The more potent corticosteroids have been shown to be teratogenic after dermal application in laboratory animals. There are no adequate and well-controlled studies in pregnant women on teratogenic effects from topically applied corticosteroids. Therefore, topical corticosteroids should be used during pregnancy only if the potential benefit justifies the potential risk to the fetus. Drugs of this class should not be used extensively on pregnant patients, in large amounts, or for prolonged periods of time.

Nursing Mothers

It is not known whether topical administration of corticosteroids could result in sufficient systemic absorption to produce detectable quantities in breast milk. Systemically administered corticosteroids are secreted into breast milk in quantities *not* likely to have a deleterious effect on the infant. Nevertheless, caution should be exercised when topical corticosteroids are administered to a nursing woman.

Pediatric Use

Pediatric patients may demonstrate greater susceptibility to topical corticosteroid-induced HPA axis suppression and Cushing's syndrome than mature patients because of a larger skin surface area to body weight ratio.

Hypothalamic-pituitary-adrenal (HPA) axis suppression, Cushing's syndrome, and intracranial hypertension have been reported in children receiving topical corticosteroids. Manifestations of adrenal suppression in children include linear growth retardation, delayed weight gain, low plasma cortisol levels, and absence of response to ACTH stimulation. Manifestations of intracranial hypertension include bulging fontanelles, headaches, and bilateral papilledema.

Administration of topical corticosteroids to pediatric patients should be limited to the least amount compatible with an effective therapeutic regimen. Chronic corticosteroid therapy may interfere with the growth and development of children.

ADVERSE REACTIONS

The following local adverse reactions are reported infrequently with topical corticosteroids, but may occur more frequently with the use of occlusive dressings. These reactions are listed in an approximate decreasing order of occurrence: burning, itching, irritation, dryness, folliculitis, hypertrichosis, acneiform eruptions, hypopigmentation, perioral dermatitis, allergic contact dermatitis, maceration of the skin, secondary infection, skin atrophy, striae and miliaria.

To report SUSPECTED ADVERSE REACTIONS, contact Cosette Pharmaceuticals, Inc. at 1-800-922-1038 or FDA at 1-800-FDA-1088 or www.fda.gov/medwatch.

OVERDOSAGE

Topically applied corticosteroids can be absorbed in sufficient amounts to produce systemic effects (See **PRECAUTIONS**).

DOSAGE AND ADMINISTRATION

Apply a thin film of Betamethasone Valerate Cream or Ointment to the affected skin areas one to three times a day. Dosage once or twice a day is often effective.

HOW SUPPLIED

Betamethasone Valerate Cream USP, 0.1% is supplied as follows:
15 g tubes NDC 0713-0326-15
45 g tubes NDC 0713-0326-37

Betamethasone Valerate Ointment USP, 0.1% is supplied as follows:
15 g tubes NDC 0713-0327-15
45 g tubes NDC 0713-0327-37

Store at room temperature 15°-30°C (59°-86°F) [see USP Controlled Room Temperature].

Distributed by:

Cosette Pharmaceuticals, Inc.

South Plainfield, NJ 07080

Rev. 03/2022 8-BETVCPLNC3 VC7618

NDC 0713-0326-15

Betamethasone Valerate Cream, USP 0.1%

15 g

Rx only

FOR DERMATOLOGIC USE ONLY. NOT FOR OPHTHALMIC USE.

Cosette Pharmaceuticals, Inc.

TM NDC 0713-**0326**-15
Betamethasone Valerate Rx only
Cream, USP
0.1% (Potency expressed as betamethasone)
15 g **FOR DERMATOLOGIC USE ONLY. NOT FOR OPHTHALMIC USE.**

Usual Dosage: Apply a thin film to the affected skin areas one to three times a day. Dosage once or twice a day is often effective.
Each gram contains: 1.2 mg betamethasone valerate (equivalent to 1 mg betamethasone) in a soft, white, hydrophilic cream of purified water, mineral oil, sodium phosphate monobasic [monohydrate], white petrolatum, polyethylene glycol 1000, cetareth-15, stearyl alcohol, cetyl alcohol, propylene glycol, phosphoric acid (to adjust pH, if required); chlorocresol is present as a preservative.
WARNING: Keep out of reach of children.
See package insert for full prescribing information.
Store at room temperature 15°-30°C (59°-86°F)
[see USP Controlled Room Temperature].
See crimp for lot no. and expiration date.
Important: Do not use if seal has been punctured or is not visible.
To Open: Use cap to puncture seal.
Distributed by:
Cosette Pharmaceuticals, Inc.
South Plainfield, NJ 07080
11-32615CPLNC1 Iss. 04/2020 VC116

FPO

N 3 0713-0326-15 5

TM NDC 0713-**0326**-15
Betamethasone Valerate Rx only
Cream, USP
0.1% (Potency expressed as betamethasone)
15 g **FOR DERMATOLOGIC USE ONLY. NOT FOR OPHTHALMIC USE.**

Each gram contains: 1.2 mg betamethasone valerate (equivalent to 1 mg betamethasone) in a soft, white, hydrophilic cream of purified water, mineral oil, sodium phosphate monobasic [monohydrate], white petrolatum, polyethylene glycol 1000, cetareth-15, stearyl alcohol, cetyl alcohol, propylene glycol, phosphoric acid (to adjust pH, if required); chlorocresol is present as a preservative.
WARNING: Keep out of reach of children.
Distributed by: Cosette Pharmaceuticals, Inc.
South Plainfield, NJ 07080 10-32615CPLNC2 Rev. 01/2022 VC7617

GTIN 00307130326155
N 3 0713-0326-15 5

TM NDC 0713-**0326**-15
Betamethasone Valerate Rx only
Cream, USP
0.1% (Potency expressed as betamethasone)
15 g **FOR DERMATOLOGIC USE ONLY. NOT FOR OPHTHALMIC USE.**

Usual Dosage: Apply a thin film to the affected skin areas one to three times a day. Dosage once or twice a day is often effective.
Important: The opening of this product is covered by a metal tamper-resistant seal. If this seal has been punctured or is not visible, do not use and return product to place of purchase.
To Open: To puncture the seal, reverse the cap and place the puncture-top onto the tube. Push down firmly until seal is open.
To Close: Screw the cap back onto the tube.
Store at room temperature 15°-30°C (59°-86°F) [see USP Controlled Room Temperature].
See package insert for full prescribing information.

FPO 7617

NDC 0713-0326-37

Betamethasone Valerate Cream, USP 0.1%

45 g

Rx only

FOR DERMATOLOGIC USE ONLY. NOT FOR OPHTHALMIC USE.

Cosette Pharmaceuticals, Inc.

The product label features a yellow vertical bar on the left side with a logo consisting of a circle with a stylized 'C' inside. The text on the label is as follows:

Betamethasone Valerate **Rx only**
Cream, USP

NDC 0713-**0326**-37

0.1% (Potency expressed as betamethasone)

45 g

FOR DERMATOLOGIC USE ONLY. NOT FOR OPHTHALMIC USE.

Usual Dosage: Apply a thin film to the affected skin areas one to three times a day. Dosage once or twice a day is often effective.

Each gram contains: 1.2 mg betamethasone valerate (equivalent to 1 mg betamethasone) in a soft, white, hydrophilic cream of purified water, mineral oil, sodium phosphate monobasic [monohydrate], white petrolatum, polyethylene glycol 1000, cetareth-15, stearyl alcohol, cetyl alcohol, propylene glycol, phosphoric acid (to adjust pH, if required); chlorocresol is present as a preservative.

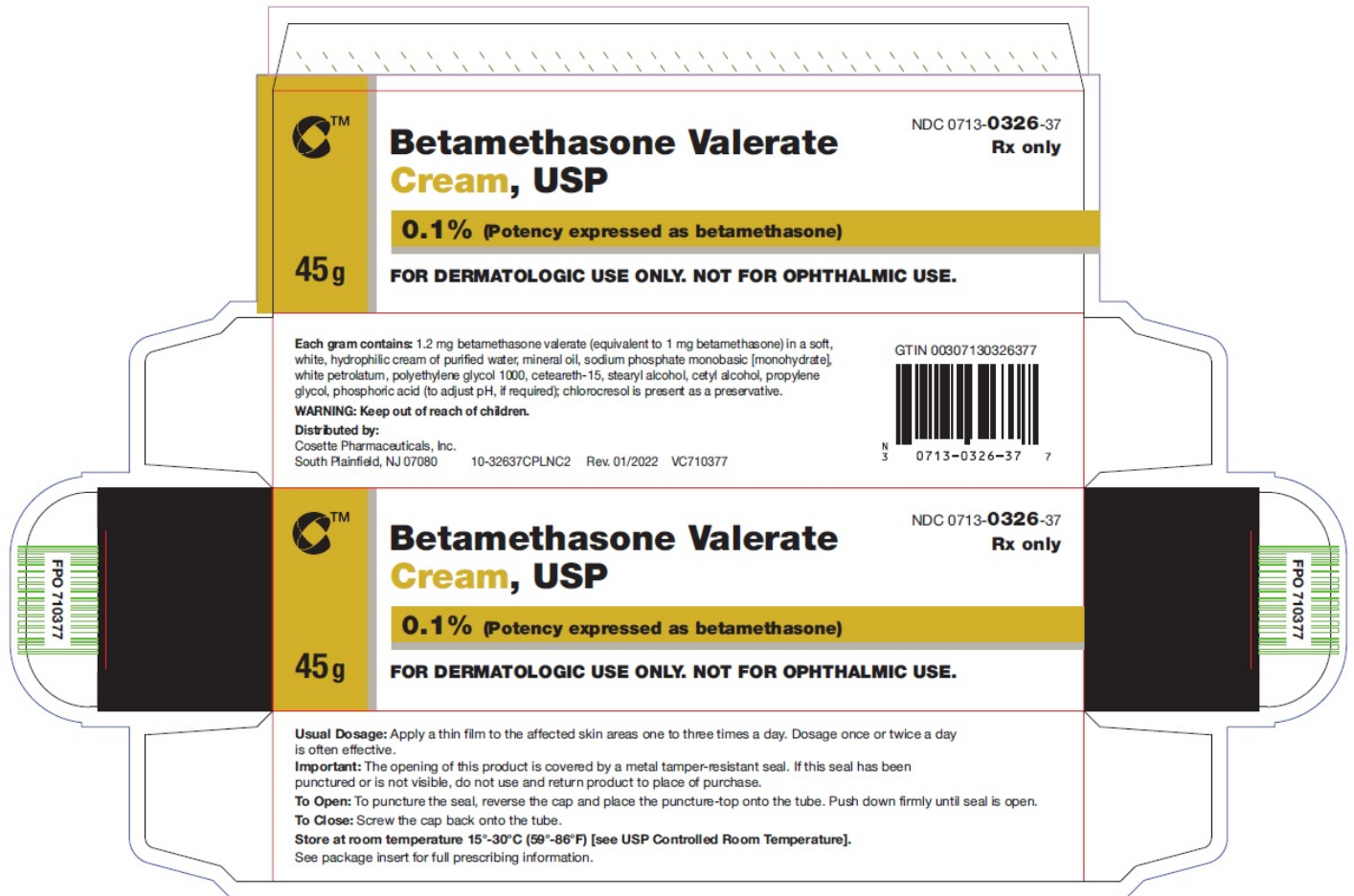
WARNING: Keep out of reach of children.
See package insert for full prescribing information.

Store at room temperature 15°-30°C (59°-86°F)
[see USP Controlled Room Temperature].
See crimp for lot no. and expiration date.

Important: Do not use if seal has been punctured or is not visible.

To Open: Use cap to puncture seal.

Distributed by: Cosette Pharmaceuticals, Inc.
South Plainfield, NJ 07080
11-32637CPLNC1 Iss. 04/2020 VC1155



NDC 0713-0327-15

Betamethasone Valerate Ointment, USP 0.1%

15 g

Rx only

FOR DERMATOLOGIC USE ONLY. NOT FOR OPHTHALMIC USE.

Cosette Pharmaceuticals, Inc.



NDC 0713-0327-15

Betamethasone Valerate Ointment, USP

Rx only

0.1% (Potency expressed as betamethasone)

15 g

FOR DERMATOLOGIC USE ONLY. NOT FOR OPHTHALMIC USE.

Usual Dosage: Apply a thin film to the affected skin areas one to three times a day. Dosage once or twice a day is often effective.

Each gram contains: 1.2 mg betamethasone valerate (equivalent to 1 mg betamethasone) in an ointment base of white petrolatum, mineral oil, and hydrogenated lanolin.

WARNING: Keep out of reach of children.

See package insert for full prescribing information.

Store at room temperature 15°-30°C (59°-86°F) [see USP Controlled Room Temperature].

See crimp for lot no. and expiration date.

Important: Do not use if seal has been punctured or is not visible.

To Open: Use cap to puncture seal.

Distributed by:

Cosette Pharmaceuticals, Inc. Rev. 05/2020
South Plainfield, NJ 07080 11-32715CPLNC2 VC128



Betamethasone Valerate Ointment, USP

NDC 0713-0327-15

Rx only

0.1% (Potency expressed as betamethasone)

15 g

FOR DERMATOLOGIC USE ONLY. NOT FOR OPHTHALMIC USE.

Each gram contains: 1.2 mg betamethasone valerate (equivalent to 1 mg betamethasone) in an ointment base of white petrolatum, mineral oil, and hydrogenated lanolin.

WARNING: Keep out of reach of children.

See package insert for full prescribing information.

Store at room temperature 15°-30°C (59°-86°F) [see USP Controlled Room Temperature].

Distributed by:

Cosette Pharmaceuticals, Inc. Rev. 01/2022 VC7616 10-32715CPLNC3
South Plainfield, NJ 07080

GTIN 00307130327152



Betamethasone Valerate Ointment, USP

NDC 0713-0327-15

Rx only

0.1% (Potency expressed as betamethasone)

15 g

FOR DERMATOLOGIC USE ONLY. NOT FOR OPHTHALMIC USE.

Usual Dosage: Apply a thin film to the affected skin areas one to three times a day. Dosage once or twice a day is often effective.

Important: The opening of this product is covered by a metal tamper-resistant seal. If this seal has been punctured or is not visible, do not use and return product to place of purchase.

To Open: To puncture the seal, reverse the cap and place the puncture-top onto the tube. Push down firmly until seal is open.

To Close: Screw the cap back onto the tube.

FPO 7616

FPO 7616

NDC 0713-0327-37

Betamethasone Valerate Ointment, USP 0.1%

45 g

Rx only

FOR DERMATOLOGIC USE ONLY. NOT FOR OPHTHALMIC USE.

Cosette Pharmaceuticals, Inc.



NDC 0713-0327-37

Betamethasone Valerate
Ointment, USP

Rx only

0.1% (Potency expressed as betamethasone)

45 g

FOR DERMATOLOGIC USE ONLY. NOT FOR OPHTHALMIC USE.

Full Coverage
Area (no text)

Usual Dosage: Apply a thin film to the affected skin areas one to three times a day. Dosage once or twice a day is often effective.

Each gram contains: 1.2 mg betamethasone valerate (equivalent to 1 mg betamethasone) in an ointment base of white petrolatum, mineral oil, and hydrogenated lanolin.

WARNING: Keep out of reach of children.

See package insert for full prescribing information.

Store at room temperature 15°-30°C (59°-86°F) [see USP Controlled Room Temperature].

See crimp for lot no. and expiration date.

Important: Do not use if seal has been punctured or is not visible.

To Open: Use cap to puncture seal.

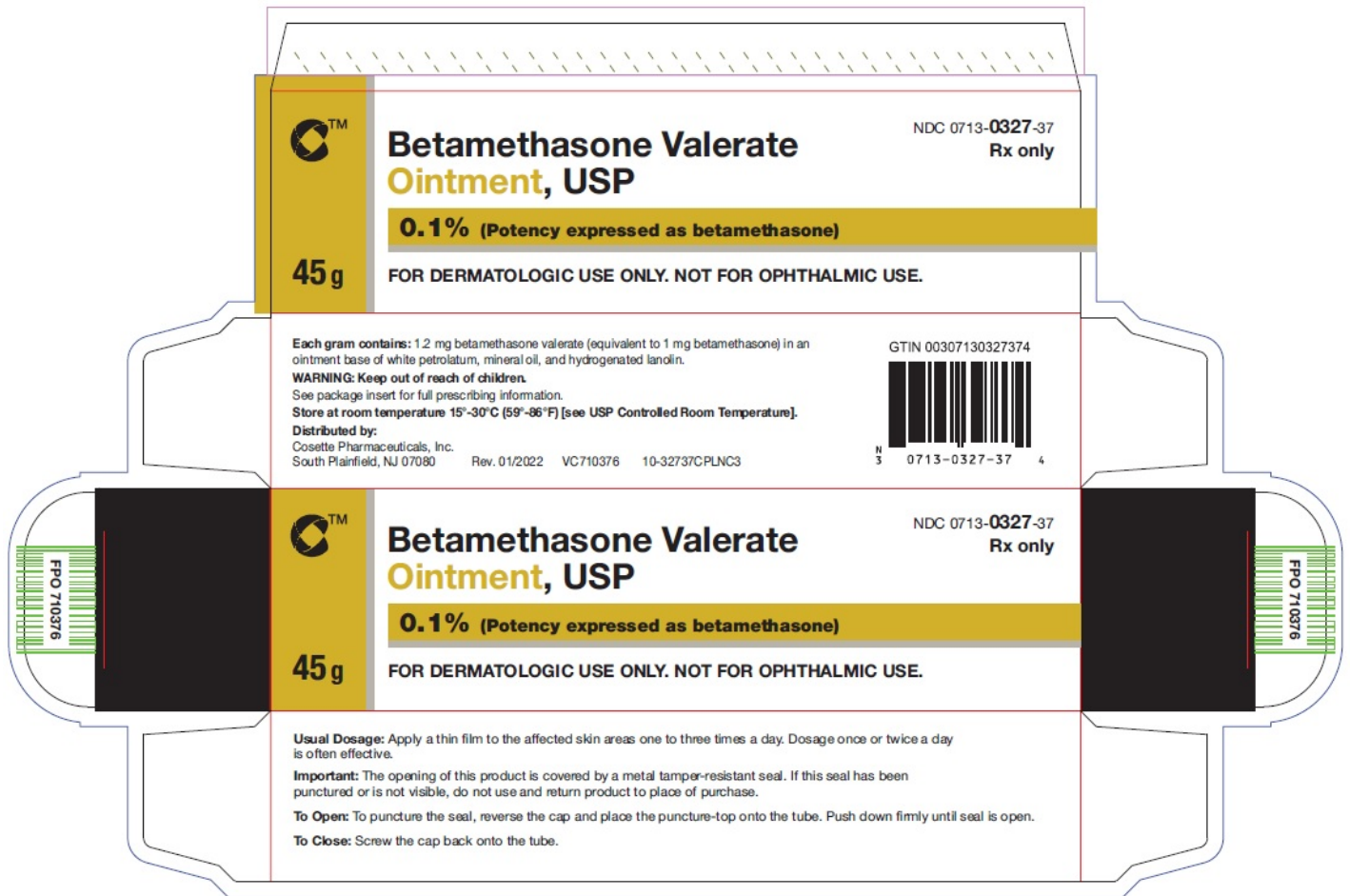
Distributed by:

Cosette Pharmaceuticals, Inc.

South Plainfield, NJ 07080 Rev. 05/2020 VC1165

11-32737CPLNC2





BETAMETHASONE VALERATE

betamethasone valerate ointment

Product Information

Product Type	HUMAN PRESCRIPTION DRUG	Item Code (Source)	NDC:67296-2080(NDC:0713-0327)
Route of Administration	TOPICAL		

Active Ingredient/Active Moiety

Ingredient Name	Basis of Strength	Strength
BETAMETHASONE VALERATE (UNII: 9IFA5XM7R2) (BETAMETHASONE - UNII:9842X06Q6M)	BETAMETHASONE VALERATE	1.2 mg in 1 g

Inactive Ingredients

Ingredient Name	Strength
PETROLATUM (UNII: 4T6H12BN9U)	
MINERAL OIL (UNII: T5L8T28FGP)	
LANOLIN ALCOHOLS (UNII: 884C3FA9HE)	

Product Characteristics

Color	white	Score	
Shape		Size	
Flavor		Imprint Code	
Contains			

Packaging

#	Item Code	Package Description	Marketing Start Date	Marketing End Date
1	NDC:67296-2080-1	15 g in 1 TUBE; Type 0: Not a Combination Product	08/27/2015	

Marketing Information

Marketing Category	Application Number or Monograph Citation	Marketing Start Date	Marketing End Date
ANDA	ANDA070069	12/19/1985	

Labeler - RedPharm Drug (828374897)

Registrant - RedPharm Drug (828374897)

Establishment

Name	Address	ID/FEI	Business Operations
RedPharm Drug		828374897	repack(67296-2080)

Revised: 7/2024

RedPharm Drug