

MYSTIC ESSENTIALS ZEN PAIN RELIEF RUB- camphor, menthol liquid

NATURE'S FUSIONS, LLC

USES

For the temporary relief of minor aches and pain associated with *backache *arthritis
*muscle strains *sprains *bruises

Camphor 0.5% - Topical Analgesic (pain relief)

Menthol 3.00% - Topical Analgesic (pain relief)

- **For External Use Only**
- **Do not use on**wounds - damaged, broken, or irritated skin
- **Stop use and ask doctor if**condition worsens * irritation develops *redness is present *symptoms persist for more than 7 days or clear up and occur again within a few days

When using this product

- Use only as directed
- Avoid contact with eyes or mucous membranes
- Do not bandage tightly or use with a heating pad.
- _____

If Pregnant or breast feeding, ask a health professional before use.

Directions

Adults and children 12 years and older: Apply to the affected area no more than 3 to 4 times daily. Children under the age of 12: Ask a doctor.

Other Information

- Keep container tightly closed
- Store at room temperature (68°-77° F)

Inactive Ingredients

Basil Linalool Oil, Eucalyptus Oil, Evening Primrose Oil, Frankincense Oil, Fractionated Coconut Oil, Ginger Root Oil, Lavender Oil, Lemongrass Oil, Peppermint Oil, Rosemary + 1,8 Cineole Oil, Wintergreen Oil

Questions?Call (800) 352-7032

Keep our of reach of children. If swallowed, get medical help or contact a Poison Control Center right away.

Directions

Adults and children 12 years and older: Apply to the affected area no more than 3 to 4 times daily. Children under the age of 12: Ask a doctor.

ROLLER BOTTLE
 The roller is great to keep in your pocket while on the go, letting you directly apply relief when and where you need it.

ROLLER APPLICATION
 Glide roller directly across affected areas. Massage in as necessary.

COMMON AREAS
 Relief of minor aches and pain for the neck, back, elbow, wrist, knee, and ankle.

MYSTIC ESSENTIALS™

ZEN

PAIN RELIEF RUB

COMMON USES
 For the relief of minor aches and pain associated with simple backache • arthritis • sprains • muscle strains • bruises

1 - ROLLER BOTTLE | 0.34 FL OZ (10 mL)

Drug Facts

Active Ingredients	Purpose
Camphor 0.50% } Menthol 3.00%	Topical Analgesic (pain relief)

Uses For the temporary relief of minor aches and pain associated with
 ■ backache ■ arthritis ■ muscle strains
 ■ strains ■ bruises

Warnings

- For External Use Only
- Do not use on wounds - damaged, broken, or irritated skin
- Stop use and ask a doctor if condition worsens - irritation develops - redness is present - symptoms persist for more than 7 days or clear up and occur again within a few days

When using this product

- Use only as directed
- Avoid contact with eyes or mucous membranes
- Do not bandage tightly or use with a heating pad

Drug Facts (continued)

If pregnant or breast feeding, ask a health professional before use.
Keep out of reach of children. If swallowed, get medical help or contact a Poison Control Center right away.

Directions
 Adults and children 12 years and older: Apply to the affected area no more than 3 to 4 times daily. Children under the age of 12: Ask a doctor

Other Information

- Keep container tightly closed
- Store at room temperature (68°-77° F)

Inactive Ingredients
 Basil Linalool Oil, Eucalyptus Oil, Evening Primrose Oil, Frankincense Oil, Fractionated Coconut Oil, Ginger Root Oil, Lavender Oil, Lemongrass Oil, Peppermint Oil, Rosemary + 1,8 Cineole Oil, Wintergreen Oil.

Questions? Call (800) 352-7032

INSIDE GLUE

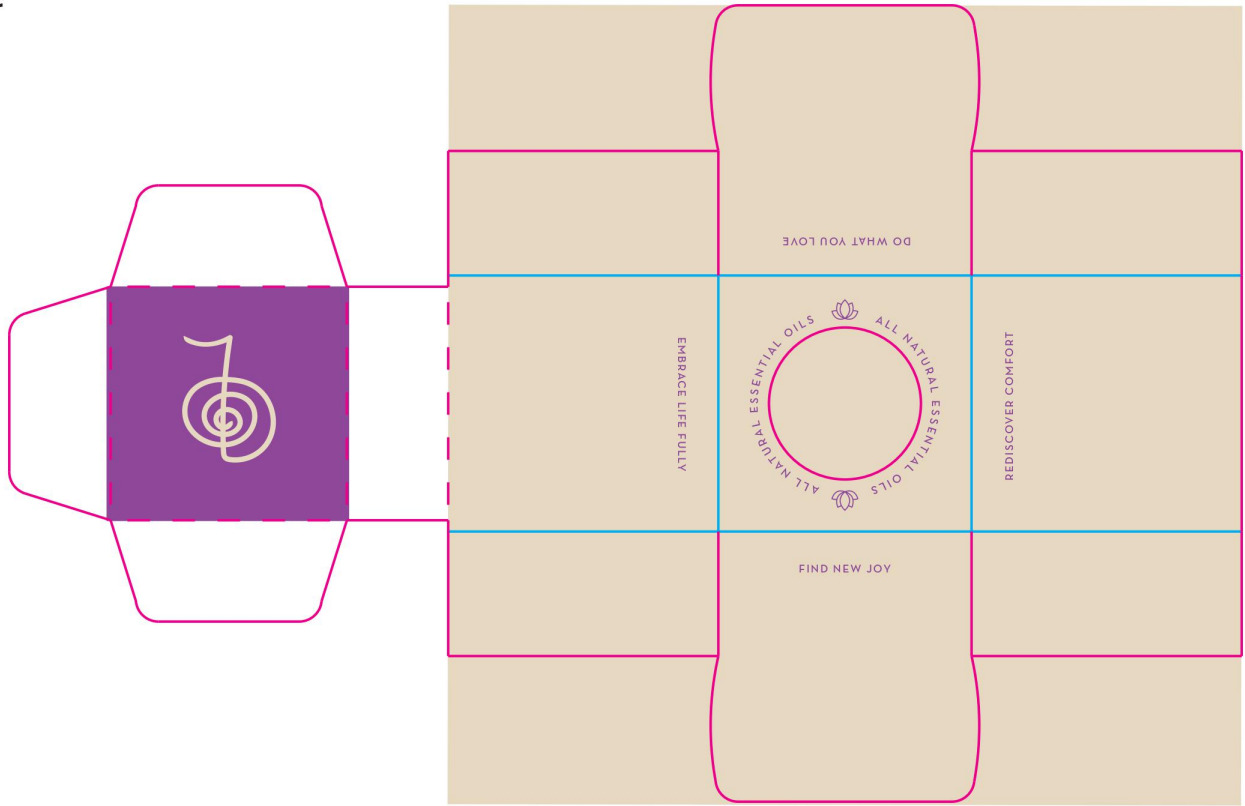
INSIDE GLUE

INSIDE GLUE

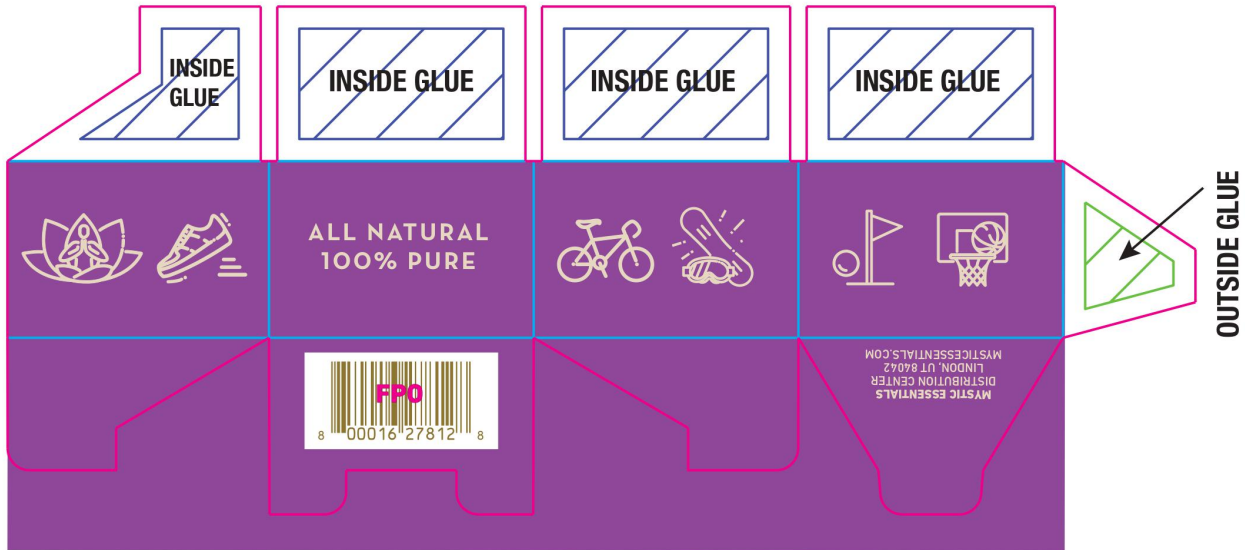
INSIDE GLUE

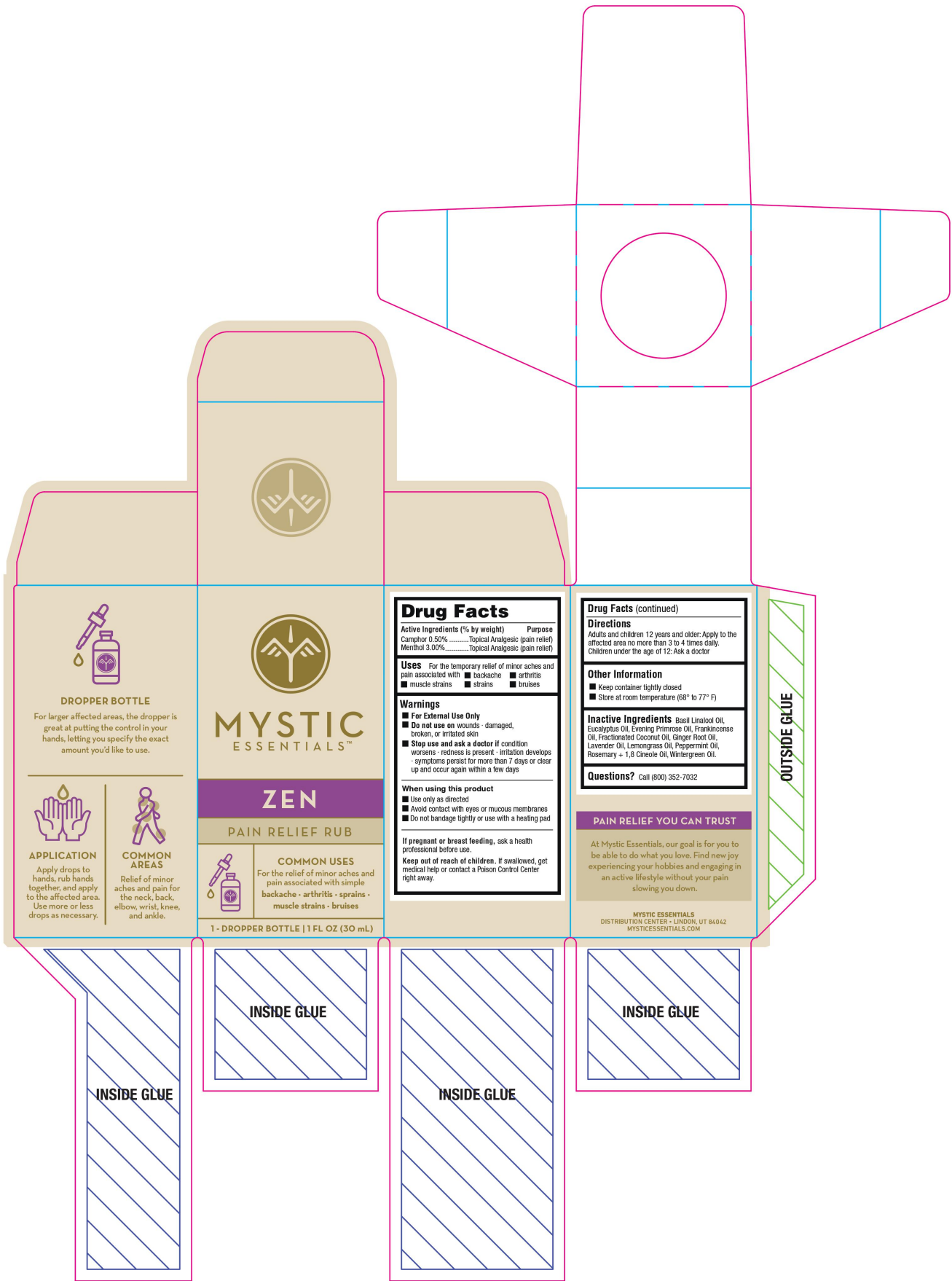
OUTSIDE GLUE

Mystic Essentials Zen v13
10mL Roller Carton
Collar



Mystic Essentials Zen v13
10mL Roller Carton
Base





DROPPER BOTTLE

For larger affected areas, the dropper is great at putting the control in your hands, letting you specify the exact amount you'd like to use.



APPLICATION

Apply drops to hands, rub hands together, and apply to the affected area. Use more or less drops as necessary.



COMMON AREAS

Relief of minor aches and pain for the neck, back, elbow, wrist, knee, and ankle.



MYSTIC ESSENTIALS™

ZEN

PAIN RELIEF RUB



COMMON USES
 For the relief of minor aches and pain associated with simple backache - arthritis - sprains - muscle strains - bruises

1 - DROPPER BOTTLE | 1 FL OZ (30 mL)

Drug Facts

Active Ingredients (% by weight) Purpose
 Camphor 0.50% Topical Analgesic (pain relief)
 Menthol 3.00% Topical Analgesic (pain relief)

Uses For the temporary relief of minor aches and pain associated with
 ■ backache ■ arthritis ■ muscle strains ■ strains ■ bruises

Warnings
 ■ For External Use Only
 ■ Do not use on wounds - damaged, broken, or irritated skin
 ■ Stop use and ask a doctor if condition worsens - redness is present - irritation develops - symptoms persist for more than 7 days or clear up and occur again within a few days

When using this product
 ■ Use only as directed
 ■ Avoid contact with eyes or mucous membranes
 ■ Do not bandage tightly or use with a heating pad

If pregnant or breast feeding, ask a health professional before use.
 Keep out of reach of children. If swallowed, get medical help or contact a Poison Control Center right away.

Drug Facts (continued)

Directions
 Adults and children 12 years and older: Apply to the affected area no more than 3 to 4 times daily. Children under the age of 12: Ask a doctor

Other Information
 ■ Keep container tightly closed
 ■ Store at room temperature (68° to 77° F)

Inactive Ingredients Basil, Linalool Oil, Eucalyptus Oil, Evening Primrose Oil, Frankincense Oil, Fractionated Coconut Oil, Ginger Root Oil, Lavender Oil, Lemongrass Oil, Peppermint Oil, Rosemary - 1,8 Cineole Oil, Wintergreen Oil.

Questions? Call (800) 352-7032

PAIN RELIEF YOU CAN TRUST

At Mystic Essentials, our goal is for you to be able to do what you love. Find new joy experiencing your hobbies and engaging in an active lifestyle without your pain slowing you down.

MYSTIC ESSENTIALS
 DISTRIBUTION CENTER - LINDON, UT 84042
 MYSTICESSENTIALS.COM

OUTSIDE GLUE

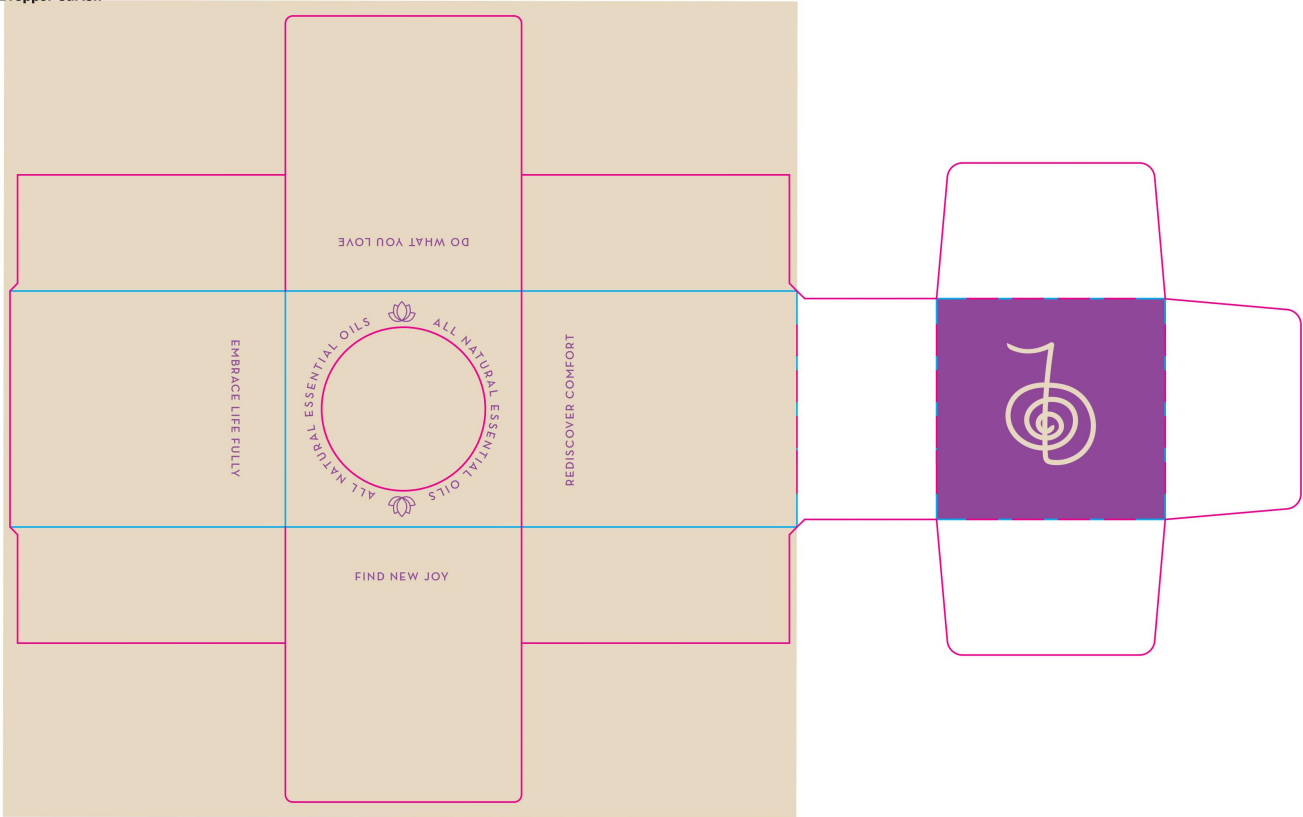
INSIDE GLUE

INSIDE GLUE

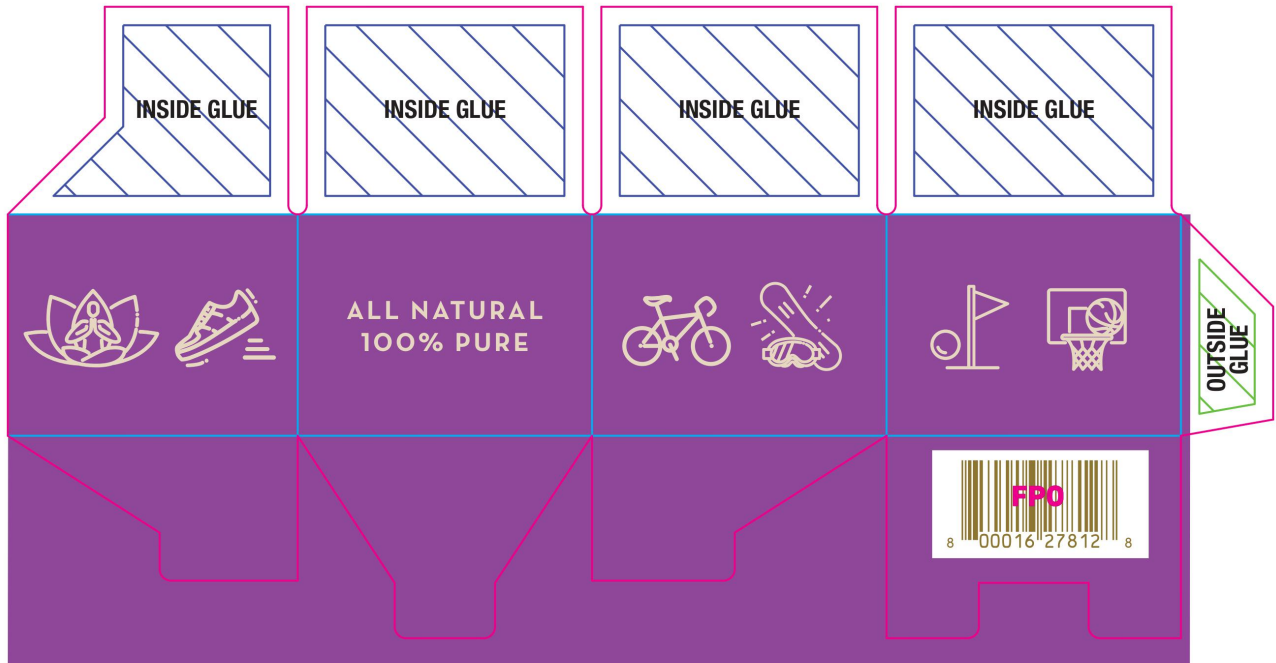
INSIDE GLUE

INSIDE GLUE

Mystic Essentials Zen v13
30mL Dropper Carton
Collar



Mystic Essentials Zen v13
30mL Dropper Carton
Base



MYSTIC ESSENTIALS ZEN PAIN RELIEF RUB

camphor, menthol liquid

Product Information

Product Type	HUMAN OTC DRUG	Item Code (Source)	NDC:73769-451
Route of Administration	TOPICAL		

Active Ingredient/Active Moiety

Ingredient Name	Basis of Strength	Strength
CAMPHOR (NATURAL) (UNII: N20HL7Q941) (CAMPHOR (NATURAL) - UNII:N20HL7Q941)	CAMPHOR (NATURAL)	0.5 g in 100 g
MENTHOL (UNII: L7T10EIP3A) (MENTHOL - UNII:L7T10EIP3A)	MENTHOL	3 g in 100 g

Inactive Ingredients

Ingredient Name	Strength
ROSEMARY OIL (UNII: 8LGU7VM393)	
LAVENDER OIL (UNII: ZBP1YXW0H8)	
METHYL SALICYLATE (UNII: LAV5U5022Y)	
MEDIUM-CHAIN TRIGLYCERIDES (UNII: C9H2L21V7U)	
PEPPERMINT OIL (UNII: AV092KU4JH)	
EUCALYPTUS OIL (UNII: 2R04ONI662)	
GINGER OIL (UNII: SAS9Z1SVUK)	
EAST INDIAN LEMONGRASS OIL (UNII: UP0M8M3VZW)	
BASIL OIL (UNII: Z129UMU8LE)	
INDIAN FRANKINCENSE (UNII: 4PW41QCO2M)	
EVENING PRIMROSE OIL (UNII: 3Q9L08K71N)	

Packaging

#	Item Code	Package Description	Marketing Start Date	Marketing End Date
1	NDC:73769-451-01	10 g in 1 BOTTLE, GLASS; Type 0: Not a Combination Product	08/01/2024	
2	NDC:73769-451-03	30 g in 1 BOTTLE, DROPPER; Type 0: Not a Combination Product	08/01/2024	

Marketing Information

Marketing Category	Application Number or Monograph Citation	Marketing Start Date	Marketing End Date
OTC Monograph Drug	M017	08/01/2024	

Labeler - NATURE'S FUSIONS, LLC (051472644)

Establishment

Name	Address	ID/FEI	Business Operations
NATURE'S FUSIONS, LLC		051472644	manufacture(73769-451)

