

**BACLOFEN- baclofen tablet**  
**Graviti Pharmaceuticals Private Limited**

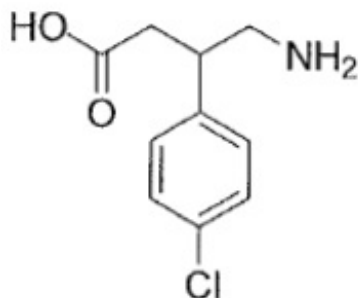
-----  
**BACLOFEN TABLETS, USP**

**Rx only**

**DESCRIPTION**

Baclofen, USP is a muscle relaxant and antispastic.

Its chemical name is 4-amino-3-(4-chlorophenyl)-butanoic acid. The structural formula is:



C<sub>10</sub>H<sub>12</sub>ClNO<sub>2</sub> M.W. 213.66

Baclofen, USP is a white to off-white crystalline powder, odorless or practically so. Slightly soluble in water, very slightly soluble in methanol/ethanol, practically insoluble in acetone; insoluble in acetone, insoluble in chloroform.

Each tablet, for oral administration, contains 10 mg or 20 mg baclofen, USP. In addition, each tablet contains the following inactive ingredients: microcrystalline cellulose, pregelatinized starch, povidone, colloidal silicon dioxide and magnesium stearate.

FDA approved dissolution test specifications differ from USP.

**CLINICAL PHARMACOLOGY**

The precise mechanism of action of baclofen is not fully known. Baclofen is capable of inhibiting both monosynaptic and polysynaptic reflexes at the spinal level, possibly by hyperpolarization of afferent terminals, although actions at supraspinal sites may also occur and contribute to its clinical effect. Although baclofen is an analog of the putative inhibitory neurotransmitter gamma-aminobutyric acid (GABA), there is no conclusive evidence that actions on GABA systems are involved in the production of its clinical effects. In studies with animals baclofen has been shown to have general CNS depressant properties as indicated by the production of sedation with tolerance, somnolence, ataxia, and respiratory and cardiovascular depression. Baclofen is rapidly and extensively absorbed and eliminated. Absorption may be dose-dependent, being reduced with increasing doses. Baclofen is excreted primarily by the kidney in

unchanged form and there is relatively large intersubject variation in absorption and/or elimination.

## **INDICATIONS AND USAGE**

Baclofen tablets are useful for the alleviation of signs and symptoms of spasticity resulting from multiple sclerosis, particularly for the relief of flexor spasms and concomitant pain, clonus, and muscular rigidity.

Patients should have reversible spasticity so that baclofen treatment will aid in restoring residual function. Baclofen tablets may also be of some value in patients with spinal cord injuries and other spinal cord diseases.

Baclofen tablets are not indicated in the treatment of skeletal muscle spasm resulting from rheumatic disorders.

The efficacy of baclofen in stroke, cerebral palsy, and Parkinson's disease has not been established and, therefore, it is not recommended for these conditions.

## **CONTRAINDICATIONS**

Hypersensitivity to baclofen.

## **WARNINGS**

a. Neonatal Withdrawal Symptoms: Withdrawal symptoms have been reported starting hours to days after delivery in neonates whose mothers were treated with oral baclofen throughout pregnancy. The symptoms of withdrawal in these infants have included increased muscle tone, tremor, jitteriness, and seizure. If the potential benefit justifies the potential risk to the fetus and oral baclofen is continued during pregnancy, gradually reduce the dose and discontinue baclofen before delivery. If slow withdrawal is not feasible, advise the parents or caregivers of the potential for neonatal withdrawal.

b. Abrupt Drug Withdrawal: Hallucinations and seizures have occurred on abrupt withdrawal of baclofen. Therefore, except for serious adverse reactions, the dose should be reduced slowly when the drug is discontinued.

c. Impaired Renal Function: Because baclofen is primarily excreted unchanged through the kidneys, it should be given with caution, and it may be necessary to reduce the dosage.

d. Stroke: Baclofen has not significantly benefited patients with stroke. These patients have also shown poor tolerability to the drug.

e. Pregnancy: Baclofen has been shown to increase the incidence of omphaloceles (ventral hernias) in fetuses of rats given approximately 13 times the maximum dose recommended for human use, at a dose which caused significant reductions in food intake and weight gain in dams. This abnormality was not seen in mice or rabbits.

There was also an increased incidence of incomplete sternebral ossification in fetuses of rats given approximately 13 times the maximum recommended human dose, and an increased incidence of unossified phalangeal nuclei of forelimbs and hindlimbs in fetuses of rabbits given approximately 7 times the maximum recommended human dose. In

mice, no teratogenic effects were observed, although reductions in mean fetal weight with consequent delays in skeletal ossification were present when dams were given 17 and 34 times the human daily dose. There are no studies in pregnant women. Baclofen should be used during pregnancy only if the benefit clearly justifies the potential risk to the fetus.

## **PRECAUTIONS**

Because of the possibility of sedation, patients should be cautioned regarding the operation of automobiles or other dangerous machinery, and activities made hazardous by decreased alertness. Patients should also be cautioned that the central nervous system effects of baclofen may be additive to those of alcohol and other CNS depressants.

Baclofen should be used with caution where spasticity is utilized to sustain upright posture and balance in locomotion or whenever spasticity is utilized to obtain increased function.

In patients with epilepsy, the clinical state and electroencephalogram should be monitored at regular intervals, since deterioration in seizure control and EEG have been reported occasionally in patients taking baclofen.

It is not known whether this drug is excreted in human milk. As a general rule, nursing should not be undertaken while a patient is on a drug since many drugs are excreted in human milk.

A dose-related increase in incidence of ovarian cysts and a less marked increase in enlarged and/or hemorrhagic adrenal glands was observed in female rats treated chronically with baclofen.

Ovarian cysts have been found by palpation in about 4% of the multiple sclerosis patients that were treated with baclofen for up to one year. In most cases these cysts disappeared spontaneously while patients continued to receive the drug. Ovarian cysts are estimated to occur spontaneously in approximately 1% to 5% of the normal female population.

## **Pediatric Use**

Safety and effectiveness in pediatric patients below the age of 12 years have not been established.

## **ADVERSE REACTIONS**

The most common is transient drowsiness (10 to 63%). In one controlled study of 175 patients, transient drowsiness was observed in 63% of those receiving baclofen compared to 36% of those in the placebo group. Other common adverse reactions are dizziness (5 to 15%), weakness (5 to 15%) and fatigue (2 to 4%).

Others reported:

Neuropsychiatric: Confusion (1 to 11%), headache (4 to 8%), insomnia (2 to 7%); and, rarely, euphoria, excitement, depression, hallucinations, paresthesia, muscle pain,

tinnitus, slurred speech, coordination disorder, tremor, rigidity, dystonia, ataxia, blurred vision, nystagmus, strabismus, miosis, mydriasis, diplopia, dysarthria, epileptic seizure

Cardiovascular: Hypotension (0 to 9%). Rare instances of dyspnea, palpitation, chest pain, syncope.

Gastrointestinal: Nausea (4 to 12%), constipation (2 to 6%); and rarely, dry mouth, anorexia, taste disorder, abdominal pain, vomiting, diarrhea, and positive test for occult blood in stool

Genitourinary: Urinary frequency (2 to 6%); and rarely, enuresis, urinary retention, dysuria, impotence, inability to ejaculate, nocturia, hematuria

Other: Instances of rash, pruritus, ankle edema, excessive perspiration, weight gain, nasal congestion.

Some of the CNS and genitourinary symptoms may be related to the underlying disease rather than to drug therapy. The following laboratory tests have been found to be abnormal in a few patients receiving baclofen: increased SGOT, elevated alkaline phosphatase, and elevation of blood sugar.

**To report SUSPECTED ADVERSE REACTIONS, contact Graviti Pharmaceuticals Inc., at 1-855-298-4506 or FDA at 1-800-FDA-1088 or [www.fda.gov/medwatch](http://www.fda.gov/medwatch).**

## **OVERDOSAGE**

Signs and Symptoms: Vomiting, muscular hypotonia, drowsiness, accommodation disorders, coma, respiratory depression and seizures

Treatment: In the alert patient, empty the stomach promptly by induced emesis followed by lavage. In the obtunded patient, secure the airway with a cuffed endotracheal tube before beginning lavage (do not induce emesis). Maintain adequate respiratory exchange, do not use respiratory stimulants

## **DOSAGE AND ADMINISTRATION**

The determination of optimal dosage requires individual titration. Start therapy at a low dosage and increase gradually until optimum effect is achieved (usually between 40 to 80 mg daily).

The following dosage titration schedule is suggested:

5 mg t.i.d. for 3 days

10 mg t.i.d. for 3 days

15 mg t.i.d. for 3 days

20 mg t.i.d. for 3 days

Thereafter additional increases may be necessary but the total daily dose should not exceed a maximum of 80 mg daily (20 mg q.i.d.).

The lowest dose compatible with an optimal response is recommended. If benefits are not evident after a reasonable trial period, patients should be slowly withdrawn from the

drug (see **WARNINGS**, [Abrupt Drug Withdrawal](#)).

## **HOW SUPPLIED**

Baclofen Tablets, USP 10 mg are available white to off-white, round, flat-faced, beveled-edge tablets debossed "237" on one side and partial scored on the other side, containing 10 mg baclofen, USP packaged in bottles of 30 (NDC 69844-085-01) 100 (NDC 69844-085-02) and 1,000 (NDC 69844-085-03) tablets.

Baclofen Tablets, USP 20 mg are available white to off-white, round, flat-faced, beveled-edge tablets debossed "238" on one side and partial scored on the other side, containing 20 mg baclofen, USP packaged in bottles of 30 (NDC 69844-086-01) 100 (NDC 69844-086-02) and 1,000 (NDC 69844-086-03) tablets.

PHARMACIST: Dispense in a well-closed container as defined in the USP, with a child-resistant closure (as required).

Store at 20° to 25°C (68° to 77°F) [See USP Controlled Room Temperature].

KEEP THIS AND ALL MEDICATIONS OUT OF THE REACH OF CHILDREN.

### **Manufactured by:**

Graviti Pharmaceuticals Pvt Ltd

Telangana - 502307, INDIA

### **Manufactured for:**

Graviti Pharmaceuticals Inc.,

Wilmington, Delaware-19801, USA.

Rev. 06/2023

## **PACKAGE LABEL.PRINCIPAL DISPLAY PANEL**

NDC 69844-085-01

Baclofen Tablets, USP

10 mg

Rx only

30 Tablets

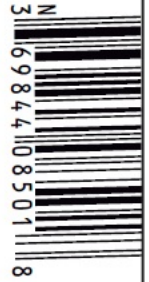
Graviti Pharmaceuticals Private Limited

NDC 69844-085-01

Each tablet contains 10 mg baclofen, USP.

**Manufactured by:**

Graviti Pharmaceuticals Pvt Ltd  
Telangana – 502307, INDIA



**Baclofen  
Tablets, USP**

**10 mg**

**Usual Dosage:** See package insert for full prescribing information

Store at 20° to 25°C (68° to 77°F); [see USP Controlled Room Temperature].

Dispense in a well-closed container as defined in the USP, with a child-resistant closure (as required).

**Manufactured for:**

Graviti Pharmaceuticals Inc.,  
Wilmington, Delaware-19801, USA.

Mfg.Lic.No.:12/SRD/TS/2017/F/G

**Rev. 02/2023**

Lot:

Exp.Date:

**R<sub>x</sub> only**

**30 Tablets**



**KEEP THIS AND ALL  
MEDICATIONS OUT OF  
REACH OF CHILDREN.**

**PACKAGE LABEL.PRINCIPAL DISPLAY PANEL**

NDC 69844-086-01

Baclofen Tablets, USP

20 mg

Rx only

30 Tablets

Graviti Pharmaceuticals Private Limited

NDC 69844-086-01

Each tablet contains 20 mg baclofen, USP.

**Manufactured by:**

Graviti Pharmaceuticals Pvt Ltd  
Telangana – 502307, INDIA



**Baclofen  
Tablets, USP**

**20 mg**

**Usual Dosage:** See package insert for full prescribing information

Store at 20° to 25°C (68° to 77°F); [see USP Controlled Room Temperature].

Dispense in a well-closed container as defined in the USP, with a child-resistant closure (as required).

**Manufactured for:**

Graviti Pharmaceuticals Inc.,  
Wilmington, Delaware-19801, USA.

Mfg.Lic.No.:12/SRD/TS/2017/F/G

**Rev. 02/2023**

Lot:

Exp.Date:

**R<sub>x</sub> only**

**30 Tablets**



**KEEP THIS AND ALL  
MEDICATIONS OUT OF  
REACH OF CHILDREN.**

**BACLOFEN**

baclofen tablet

## Product Information

<b>Product Type</b>	HUMAN PRESCRIPTION DRUG	<b>Item Code (Source)</b>	NDC:69844-085
<b>Route of Administration</b>	ORAL		

## Active Ingredient/Active Moiety

<b>Ingredient Name</b>	<b>Basis of Strength</b>	<b>Strength</b>
<b>BACLOFEN</b> (UNII: H789N3FKE8) (BACLOFEN - UNII:H789N3FKE8)	BACLOFEN	10 mg

## Inactive Ingredients

<b>Ingredient Name</b>	<b>Strength</b>
<b>CELLULOSE, MICROCRYSTALLINE</b> (UNII: OP1R32D61U)	
<b>STARCH, CORN</b> (UNII: O8232NY3SJ)	
<b>POVIDONE K30</b> (UNII: U725QWY32X)	
<b>SILICON DIOXIDE</b> (UNII: ETJ7Z6XBU4)	
<b>MAGNESIUM STEARATE</b> (UNII: 70097M6I30)	

## Product Characteristics

<b>Color</b>	WHITE (White to off white)	<b>Score</b>	2 pieces
<b>Shape</b>	ROUND	<b>Size</b>	9mm
<b>Flavor</b>		<b>Imprint Code</b>	237
<b>Contains</b>			

## Packaging

<b>#</b>	<b>Item Code</b>	<b>Package Description</b>	<b>Marketing Start Date</b>	<b>Marketing End Date</b>
1	NDC:69844-085-01	30 in 1 BOTTLE; Type 0: Not a Combination Product	01/10/2024	
2	NDC:69844-085-02	100 in 1 BOTTLE; Type 0: Not a Combination Product	01/10/2024	
3	NDC:69844-085-03	1000 in 1 BOTTLE; Type 0: Not a Combination Product	01/10/2024	

## Marketing Information

<b>Marketing Category</b>	<b>Application Number or Monograph Citation</b>	<b>Marketing Start Date</b>	<b>Marketing End Date</b>
ANDA	ANDA217788	01/10/2024	

## BACLOFEN

baclofen tablet

## Product Information

<b>Product Type</b>	HUMAN PRESCRIPTION DRUG	<b>Item Code (Source)</b>	NDC:69844-086	
<b>Route of Administration</b>	ORAL			
<b>Active Ingredient/Active Moiety</b>				
	<b>Ingredient Name</b>	<b>Basis of Strength</b>	<b>Strength</b>	
	BACLOFEN (UNII: H789N3FKE8) (BACLOFEN - UNII:H789N3FKE8)	BACLOFEN	20 mg	
<b>Inactive Ingredients</b>				
	<b>Ingredient Name</b>		<b>Strength</b>	
	SILICON DIOXIDE (UNII: ETJ7Z6XBU4)			
	MAGNESIUM STEARATE (UNII: 70097M6I30)			
	CELLULOSE, MICROCRYSTALLINE (UNII: OP1R32D61U)			
	STARCH, CORN (UNII: O8232NY3SJ)			
	SODIUM STARCH GLYCOLATE TYPE A POTATO (UNII: 5856J3G2A2)			
<b>Product Characteristics</b>				
<b>Color</b>	WHITE (White to off white)	<b>Score</b>	2 pieces	
<b>Shape</b>	ROUND	<b>Size</b>	12mm	
<b>Flavor</b>		<b>Imprint Code</b>	238	
<b>Contains</b>				
<b>Packaging</b>				
<b>#</b>	<b>Item Code</b>	<b>Package Description</b>	<b>Marketing Start Date</b>	<b>Marketing End Date</b>
1	NDC:69844-086-01	30 in 1 BOTTLE; Type 0: Not a Combination Product	01/10/2024	
2	NDC:69844-086-02	100 in 1 BOTTLE; Type 0: Not a Combination Product	01/10/2024	
3	NDC:69844-086-03	1000 in 1 BOTTLE; Type 0: Not a Combination Product	01/10/2024	
<b>Marketing Information</b>				
<b>Marketing Category</b>	<b>Application Number or Monograph Citation</b>	<b>Marketing Start Date</b>	<b>Marketing End Date</b>	
ANDA	ANDA217788	01/10/2024		

**Labeler** - Graviti Pharmaceuticals Private Limited (650884781)

**Registrant** - Graviti Pharmaceuticals Private Limited (650884781)

### Establishment

<b>Name</b>	<b>Address</b>	<b>ID/FEI</b>	<b>Business Operations</b>
-------------	----------------	---------------	----------------------------



Graviti Pharmaceuticals Private Limited	650884781	MANUFACTURE(69844-085, 69844-086) , ANALYSIS(69844-085, 69844-086)
---	-----------	--

Revised: 1/2024

Graviti Pharmaceuticals Private Limited