

**MOTOFEN- difenoxin and atropine sulfate tablet**  
**Legacy Pharma USA Inc.**

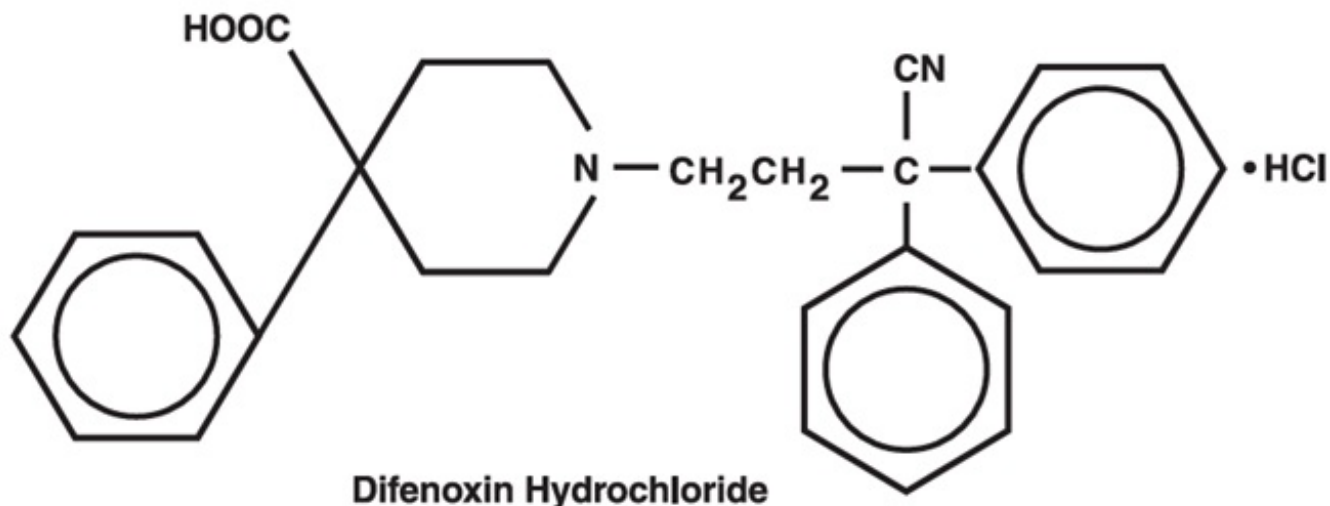
-----  
**Motofen<sup>®</sup> (difenoquin and atropine sulfate tablets) CIV**

**Rx Only**

**DESCRIPTION**

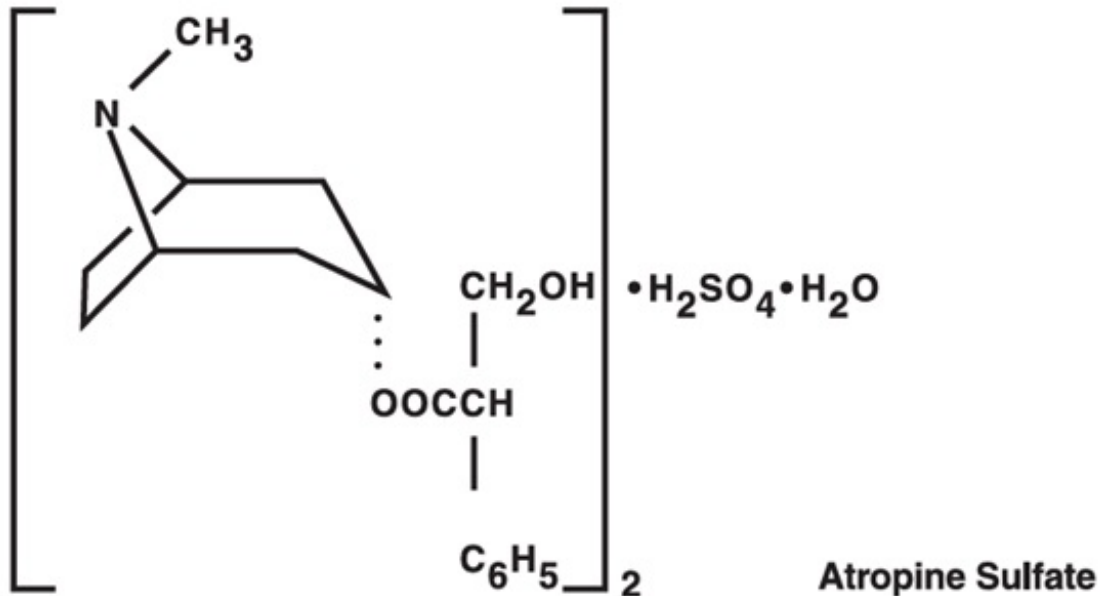
Each five-sided dye free MOTOFEN<sup>®</sup> tablet contains: 1 mg of difenoxin (equivalent to 1.09 mg of difenoxin hydrochloride) and 0.025 mg of atropine sulfate (equivalent to 0.01 mg of atropine). Difenoquin hydrochloride, 1-(3-cyano-3,3-diphenylpropyl)-4-phenyl-4-piperidinecarboxylic acid monohydrochloride, is an orally administered antidiarrheal agent which is chemically related to the narcotic meperidine.

The structural formula is:



Atropine sulfate is present to discourage deliberate overdose.

Atropine sulfate, an anticholinergic, is benzeneacetic acid,  $\alpha$ -(hydroxymethyl)-, 8-methyl-8-azabicyclo[3.2.1]oct-3-yl ester, endo-( $\pm$ )-, (2:1) (salt), monohydrate and has the following structural formula:



Inactive Ingredients: calcium stearate, cellulose, lactose, corn starch.

## CLINICAL PHARMACOLOGY

Animal studies have shown that difenoxin hydrochloride manifests its antidiarrheal effect by slowing intestinal motility. The mechanism of action is by a local effect on the gastrointestinal wall.

Difenoxin is the principal active metabolite of diphenoxylate.

Following oral administration of MOTOFEN<sup>®</sup>, difenoxin is rapidly and extensively absorbed. Mean peak plasma levels of approximately 160 ng/mL occurred within 40 to 60 minutes in most patients following an oral dose of 2 mg. Plasma levels decline to less than 10% of their peak values within 24 hours and to less than 1% of their peak values within 72 hours. This decline parallels the appearance of difenoxin and its metabolites in the urine. Difenoxin is metabolized to an inactive hydroxylated metabolite. Both the drug and its metabolites are excreted, mainly as conjugates, in urine and feces.

## INDICATIONS AND USAGE

MOTOFEN<sup>®</sup> is indicated as adjunctive therapy in the management of acute nonspecific diarrhea and acute exacerbations of chronic functional diarrhea.

## CONTRAINDICATIONS

MOTOFEN<sup>®</sup> is contraindicated in patients with diarrhea associated with organisms that penetrate the intestinal mucosa (toxigenic *E. coli*, *Salmonella* species, *Shigella*) and pseudomembranous colitis associated with broad spectrum antibiotics. Antiperistaltic agents should not be used in the conditions because they may prolong and/or worsen diarrhea.

MOTOFEN<sup>®</sup> is *contraindicated in children under 2 years of age* because of the decreased margin of safety of drugs in this class in younger age groups.

MOTOFEN<sup>®</sup> is contraindicated in patients with a known hypersensitivity to difenoxin, atropine, or any of the inactive ingredients, and in patients who are jaundiced.

## **WARNINGS**

MOTOFEN<sup>®</sup> IS NOT AN INNOCUOUS DRUG AND DOSAGE RECOMMENDATIONS SHOULD BE STRICTLY ADHERED TO. MOTOFEN<sup>®</sup> IS NOT RECOMMENDED FOR CHILDREN UNDER 2 YEARS OF AGE. OVERDOSAGE MAY RESULT IN SEVERE RESPIRATORY DEPRESSION AND COMA, POSSIBLY LEADING TO PERMANENT BRAIN DAMAGE OR DEATH (SEE **OVERDOSAGE**). THEREFORE, KEEP THIS MEDICATION OUT OF THE REACH OF CHILDREN.

*FLUID AND ELECTROLYTE BALANCE*– THE USE OF MOTOFEN<sup>®</sup> DOES NOT PRECLUDE THE ADMINISTRATION OF APPROPRIATE FLUID AND ELECTROLYTE THERAPY. DEHYDRATION, PARTICULARLY IN CHILDREN, MAY FURTHER INFLUENCE THE VARIABILITY OF RESPONSE TO MOTOFEN<sup>®</sup> AND MAY PREDISPOSE TO DELAYED DIFENOXIN INTOXICATION. DRUG-INDUCED INHIBITION OF PERISTALSIS MAY RESULT IN FLUID RETENTION IN THE COLON, AND THIS MAY FURTHER AGGRAVATE DEHYDRATION AND ELECTROLYTE IMBALANCE.

IF SEVERE DEHYDRATION OR ELECTROLYTE IMBALANCE IS MANIFESTED, MOTOFEN<sup>®</sup> SHOULD BE WITHHELD UNTIL APPROPRIATE CORRECTIVE THERAPY HAS BEEN INITIATED.

*Ulcerative Colitis*– In some patients with acute ulcerative colitis, agents which inhibit intestinal motility or delay intestinal transit time have been reported to induce toxic megacolon. Consequently, patients with acute ulcerative colitis should be carefully observed and MOTOFEN<sup>®</sup> therapy should be discontinued promptly if abdominal distention occurs or if other untoward symptoms develop.

*Liver and Kidney Disease*– MOTOFEN<sup>®</sup> should be used with extreme caution in patients with advanced hepatorenal disease and in all patients with abnormal liver function tests since hepatic coma may be precipitated.

*Atropine*– A subtherapeutic dose of atropine has been added to difenoxin hydrochloride to discourage deliberate overdose. Usage of MOTOFEN<sup>®</sup> in recommended doses is not likely to cause prominent anticholinergic side effects, but MOTOFEN<sup>®</sup> should be avoided in patients in whom anticholinergic drugs are contraindicated. The warnings and precautions for use of anticholinergic agents should be observed. In children, signs of atropinism may occur even with recommended doses of MOTOFEN<sup>®</sup>, particularly in patients with Down's Syndrome.

## **PRECAUTIONS**

### **Information for Patients**

CAUTION PATIENTS TO ADHERE STRICTLY TO RECOMMENDED DOSAGE SCHEDULES. THE MEDICATION SHOULD BE KEPT OUT OF REACH OF CHILDREN SINCE ACCIDENTAL OVERDOSAGE MAY RESULT IN SEVERE, EVEN FATAL, RESPIRATORY DEPRESSION.

MOTOFEN<sup>®</sup> may produce drowsiness or dizziness. The patient should be cautioned regarding activities requiring mental alertness, such as driving or operating dangerous

machinery.

## **Drug Interactions**

Since the chemical structure of difenoxin hydrochloride is similar to meperidine hydrochloride, the concurrent use of MOTOFEN<sup>®</sup> with monoamine oxidase inhibitors may, in theory, precipitate a hypertensive crisis.

MOTOFEN<sup>®</sup> may potentiate the action of barbiturates, tranquilizers, narcotics, and alcohol. When these medications are used concomitantly with MOTOFEN<sup>®</sup>, the patient should be closely monitored.

Diphenoxylate hydrochloride, from which the principal active metabolite difenoxin is derived, was found to inhibit the hepatic microsomal enzyme system at a dose of 2 mg/kg/day in studies conducted with male rats. Therefore, difenoxin has the potential to prolong the biological half-lives of drugs for which the rate of elimination is dependent on the microsomal drug metabolizing enzyme system.

## **Carcinogenesis, Mutagenesis, Impairment of Fertility**

No evidence of carcinogenesis was found in a long-term study of difenoxin hydrochloride/atropine in the rat. In this 104 week study, rats received dietary doses of 0, 1.25, 2.5, or 5 mg/kg/day difenoxin/atropine (20:1 ratio).

No experiments have been conducted to determine the mutagenic potential of MOTOFEN<sup>®</sup>. MOTOFEN<sup>®</sup> did not significantly impair fertility in rats.

## **Pregnancy/Teratogenic Effects**

Pregnancy Category C. Reproduction studies in rats and rabbits with doses at 31 and 61 times the human therapeutic dose respectively, on a mg/kg basis, demonstrated no evidence of teratogenesis due to MOTOFEN<sup>®</sup>.

Pregnant rats receiving oral doses of difenoxin hydrochloride/atropine 20 times the maximum human dose had an increase in delivery time as well as a significant increase in the percent of stillbirths.

Neonatal survival in rats was also reduced with most deaths occurring within four days of delivery.

There are no well controlled studies in pregnant women. MOTOFEN<sup>®</sup> should be used during pregnancy only if the potential benefit justifies the potential risk of the fetus.

## **Nursing Mothers**

Because of the potential for serious adverse reactions in nursing infants from MOTOFEN<sup>®</sup>, a decision should be made whether to discontinue nursing or to discontinue the drug, taking into account the importance of the drug to the mother.

## **Pediatric Use**

SAFETY AND EFFECTIVENESS IN CHILDREN BELOW THE AGE OF 12 HAVE NOT BEEN ESTABLISHED. MOTOFEN<sup>®</sup> IS CONTRAINDICATED IN CHILDREN UNDER 2 YEARS OF AGE. See **OVERDOSAGE** section for information on hazards from accidental poisoning in children.

## **ADVERSE REACTIONS**

In view of the small amount of atropine present (0.025 mg/tablet), such effects such as dryness of the skin and mucous membranes, flushing, hyperthermia, tachycardia and urinary retention are very unlikely to occur, except perhaps in children.

Many of the adverse effects reported during clinical investigation of MOTOFEN<sup>®</sup> are difficult to distinguish from symptoms associated with the diarrheal syndrome. However, the following events were reported at the stated frequencies:

*Gastrointestinal:* Nausea, 1 in 15 patients; vomiting, 1 in 30 patients; dry mouth, 1 in 30 patients; epigastric distress, 1 in 100 patients; and constipation, 1 in 300 patients.

*Central Nervous System:* Dizziness and light-headedness, 1 in 20 patients; drowsiness, 1 in 25 patients; and headache, 1 in 40 patients; tiredness, nervousness, insomnia and confusion ranged from 1 in 200 to 1 in 600 patients.

*Other less frequent reactions:* Burning eyes and blurred vision occurred in a few cases.

The following adverse reactions have been reported in patients receiving chemically-related drugs: numbness of extremities, euphoria, depression, sedation, anaphylaxis, angioneurotic edema, urticaria, swelling of the gums, pruritus, toxic megacolon, paralytic ileus, pancreatitis, and anorexia.

THIS MEDICATION SHOULD BE KEPT IN A CHILD-RESISTANT CONTAINER AND OUT OF THE REACH OF CHILDREN SINCE AN OVERDOSAGE MAY RESULT IN SEVERE RESPIRATORY DEPRESSION AND COMA, POSSIBLY LEADING TO PERMANENT BRAIN DAMAGE OR DEATH.

## **DRUG ABUSE AND DEPENDENCE**

MOTOFEN<sup>®</sup> tablets are a Schedule IV controlled substance.

Addiction to (dependence on) difenoxin hydrochloride is theoretically possible at high dosage. Therefore, the recommended dosage should not be exceeded. Because of the structural and pharmacological similarities of difenoxin hydrochloride to drugs with a definite addiction potential, MOTOFEN<sup>®</sup> should be administered with considerable caution to patients who are receiving addicting drugs, to individuals known to be addiction prone, or to those in whom histories suggest may increase dosage on their own initiative.

## **OVERDOSAGE**

### **Diagnosis and Treatment**

In the event of overdosage (initial signs may include dryness of the skin and mucous membranes, flushing, hyperthermia and tachycardia followed by lethargy or coma, hypotonic reflexes, nystagmus, pinpoint pupils and respiratory depression) gastric lavage, establishment of a patent airway and possibly mechanically assisted respiration are advised.

The narcotic antagonist naloxone may be used in the treatment of respiratory depression caused by narcotic analgesics or pharmacologically related compounds such

as MOTOFEN<sup>®</sup> tablets. When naloxone is administered intravenously, the onset of action is generally apparent within two minutes. Naloxone may be administered subcutaneously or intramuscularly providing a slightly less rapid onset of action but a more prolonged effect.

To counteract respiratory depression caused by MOTOFEN<sup>®</sup> overdose, the following dosage schedule for naloxone should be followed:

*Adult Dosage:* The usual initial adult dose of naloxone is 0.4 mg (one mL) administered intravenously. If respiratory function does not adequately improve after the initial dose, the same IV dose may be repeated at two-to-three minute intervals.

*Children:* The usual adult dose of naloxone for children is 0.01 mg/kg of body weight administered intravenously and repeated at two-to-three minute intervals if necessary.

Since the duration of action of difenoxin hydrochloride is longer than that of naloxone, improvement of respiration following administration may be followed by recurrent respiratory depression. Consequently, continuous observation is necessary until the effect of difenoxin hydrochloride on respiration (which effect may persist for many hours) has passed. Supplemental intramuscular doses of naloxone may be utilized to produce a longer lasting effect. **TREAT ALL POSSIBLE MOTOFEN<sup>®</sup> OVERDOSAGES AS SERIOUS AND MAINTAIN MEDICAL OBSERVATION FOR AT LEAST 48 HOURS, PREFERABLY UNDER CONTINUOUS HOSPITAL CARE.**

Although signs of overdose and respiratory depression may not be evident soon after ingestion of difenoxin hydrochloride, respiratory depression may occur from 12 to 30 hours later.

## **DOSAGE AND ADMINISTRATION**

The recommended starting dose of MOTOFEN<sup>®</sup> tablets in adults is 2 tablets then 1 tablet after each loose stool or 1 tablet every 3 to 4 hours as needed, but the total dosage during any 24-hour treatment period should not exceed 8 tablets. In the treatment of diarrhea, if clinical improvement is not observed in 48 hours, continued administration of this type of medication is not recommended. For acute diarrheas and acute exacerbations of functional diarrhea, treatment beyond 48 hours is usually not necessary.

Studies in children below the age of 12 have been inadequate to evaluate the safety and effectiveness of MOTOFEN<sup>®</sup> in this age group. MOTOFEN<sup>®</sup> is contraindicated in children under 2 years of age.

## **HOW SUPPLIED**

MOTOFEN<sup>®</sup> is available as a white, dye-free, five-sided, scored tablet with "0200" on the scored side and "M" on the other side. Each tablet contains 1 mg difenoxin and 0.025 mg atropine sulfate. Supplied in bottles of 100 tablets (NDC 83107-011-10). Store at 20°-25°C (68°-77°F) [See USP Controlled Room Temperature].

Manufactured for:



**LEGACY**  
P H A R M A

Legacy Pharma Inc.

Georgetown, Grand Cayman KY1-9012

Toll Free 1-800-727-7151

Motofen<sup>®</sup> is a registered trademark of Legacy Pharma Inc.

PC4883F

Rev. 1/2025

**NDC83107-011-10**

**Rx Only**

**Motofen<sup>®</sup>**

(difenoxin and atropine sulfate tablets) CIV

**1 mg/0.025mg**

*Each tablet contains 1 mg of difenoxin (equivalent to 1.09 mg of difenoxin hydrochloride) and 0.025 mg of atropine sulfate (equivalent to 0.01 mg of atropine)*

**100 Tablets**

|  |                        |   |
|--|------------------------|---|
| <b>NDC 83107-011-10</b>  |                        | <b>Rx Only</b>  |
| <b>Exp:</b><br>PC4482D   | <b>Lot:</b><br>PC4482D | <b>Motofen<sup>®</sup></b><br>(difenoxin and atropine sulfate tablets) <b>(CIV)</b><br><b>1 mg/0.025mg</b>  |
|  |                        | <b>100 Tablets</b>  |
| Manufactured for:<br>Legacy Pharma Inc.<br>Georgetown, Grand Cayman KY1-9012<br>Toll free 1-800-727-7151 |                        | <b>Usual Adult Dosage:</b> The recommended starting dose is two tablets, then one tablet after each loose stool or one tablet every 3 to 4 hours as needed, not to exceed 8 tablets in 24 hours.<br>See accompanying product literature for full prescribing information.<br><b>This is a bulk container. Not intended for household use.</b><br>Store at 20°-25° C (68°-77°F). [See USP Controlled Room Temperature].<br>Dispense in a tight, light-resistant container as defined in the USP using a child-resistant closure.<br><b>PC4482D</b> |

**MOTOFEN**

difenoxin and atropine sulfate tablet

**Product Information**

|                                |                         |                           |               |
|--------------------------------|-------------------------|---------------------------|---------------|
| <b>Product Type</b>            | HUMAN PRESCRIPTION DRUG | <b>Item Code (Source)</b> | NDC:83107-011 |
| <b>Route of Administration</b> | ORAL                    | <b>DEA Schedule</b>       | CIV           |

**Active Ingredient/Active Moiety**

| <b>Ingredient Name</b>  | <b>Basis of Strength</b> | <b>Strength</b> |
|---|--------------------------|-----------------|
| <b>DIFENOXIN HYDROCHLORIDE</b> (UNII: VQZ63K01IW) (DIFENOXIN - UNII:3ZZ5BJ9F2Q) | DIFENOXIN                | 1 mg            |
| <b>ATROPINE SULFATE</b> (UNII: 03J5ZE7KA5) (ATROPINE - UNII:7C0697DR9I)         | ATROPINE SULFATE         | 0.025 mg        |

**Inactive Ingredients**

| <b>Ingredient Name</b>                                | <b>Strength</b> |
|---|-----------------|
| <b>CALCIUM STEARATE</b> (UNII: 776XM7047L)            |                 |
| <b>STARCH, CORN</b> (UNII: O8232NY3SJ)                |                 |
| <b>CELLULOSE, MICROCRYSTALLINE</b> (UNII: OP1R32D61U) |                 |
| <b>ANHYDROUS LACTOSE</b> (UNII: 3S5Y5LH9PMK)          |                 |

**Product Characteristics**

|                 |                    |                     |          |
|-----------------|--------------------|---------------------|----------|
| <b>Color</b>    | white              | <b>Score</b>        | 2 pieces |
| <b>Shape</b>    | PENTAGON (5 sided) | <b>Size</b>         | 7mm      |
| <b>Flavor</b>   |                    | <b>Imprint Code</b> | 0200;M   |
| <b>Contains</b> |                    |                     |          |

**Packaging**

| <b>#</b> | <b>Item Code</b> | <b>Package Description</b>                         | <b>Marketing Start Date</b> | <b>Marketing End Date</b> |
|----------|------------------|--|-----------------------------|---------------------------|
| 1        | NDC:83107-011-10 | 100 in 1 BOTTLE; Type 0: Not a Combination Product | 01/01/2026                  |                           |

**Marketing Information**

| <b>Marketing Category</b> | <b>Application Number or Monograph Citation</b> | <b>Marketing Start Date</b> | <b>Marketing End Date</b> |
|---------------------------|---|-----------------------------|---------------------------|
| NDA                       | NDA017744                                       | 01/01/2026                  |                           |

**Labeler** - Legacy Pharma USA Inc. (118831776)

Revised: 3/2026

Legacy Pharma USA Inc.