

ERBORIAN CC RED CORRECT SPF 25- octinoxate, octisalate, titanium dioxide, zinc oxide cream
Laboratoires M&L

ERBORIAN - CC RED CORRECT SPF 25

Drug Facts

Active ingredients

Ethylhexyl methoxycinnamate 6%

Ethylhexyl salicylate 2%

Titanium Dioxide 2.34%

Zinc oxide 3.84%

Purpose

Sunscreen

Uses

- Helps prevent sunburn
- If used as directed with other sun protection measures [see ***Directions***], decreases the risk of skin cancer and early skin aging caused by the sun

Warnings

For external use only

Do not use

- on damaged or broken skin

When using this product

- keep out of eyes. Rinse with water to remove

Stop use and ask a doctor if

- rash occurs

Keep out of reach of children.

If swallowed, get medical help or contact a Poison Control Center right away.

Directions

- For sunscreen use:
- Apply liberally 15 minutes before sun exposure.

- Reapply at least every 2 hours
- Use a water resistant sunscreen if swimming or sweating
- **Sun Protection Measures.** Spending time in the sun increases your risk of skin cancer and early skin aging. To decrease this risk, regularly use a sunscreen with a Broad Spectrum SPF value of 15 or higher and other sun protection measures including:
 - Limit time in the sun, especially from 10 a.m. - 2 p.m.
 - Wear long-sleeved shirts, pants, hats and sunglasses
 - Children under 6 months of age: Ask a doctor.

Other information

- Protect the product in this container from excessive heat and direct sun

Inactive ingredients

Aqua/water - Cyclomethicone - Dipropylene Glycol - Glycerin - Peg-10 Dimethicone - Methyl Trimethicone - CI 77891/titanium Dioxide - C12-15 Alkyl Benzoate - Dimethicone - Vinyl Dimethicone/methicone Silsesquioxane Crosspolymer - Distearidimonium Hectorite - Magnesium Sulfate - Butylene Glycol - Centella Asiatica Extract - Talc - Dimethicone/Vinyl Dimethicone Crosspolymer - Aluminum Hydroxide - Trihydroxystearin - Phenoxyethanol - Mica - Methicone - Palmitic Acid - Stearic acid - Ethylhexylglycerin - Tocopheryl Acetate - Polyester-1 - Silica Dimethyl Silylate - Triethoxycaprylylsilane - Parfum/Fragrance - Hexyl Cinnamal - Alpha-Isomethyl Ionone - Linalool - Citronellol - Geraniol - Eugenol - Limonene - CI 77492/iron Oxides - CI 77288/chromium Oxide Greens - CI 77491/iron Oxides - CI77499/iron Oxides

Questions or comments?

Call toll free 1-888-975-2162

ERBORIAN - CC RED CORRECT SPF 25 15ml (10345-912-15)

Drug Facts (continued)

Inactive ingredients

Aqua/water -
 Cyclomethicone -
 Dipropylene Glycol -
 Glycerin - Peg-10
 Dimethicone - Methyl
 Trimethicone - CI
 77891/titanium
 Dioxide - C12-15 Alkyl

erborian
 KOREAN SKIN THERAPY
 PARIS · SEOUL

Drug Facts

Active ingredients.....Purpose

Ethylhexyl methoxycinnamate
 6%.....Sunscreen
 Ethylhexyl salicylate 2%.....Sunscreen
 Titanium dioxide 2.34%.....Sunscreen
 Zinc oxide 3.84%.....Sunscreen

Uses

- Helps prevent sunburn
- If used as directed with other sun

Benzoate - Vinyl
 Dimethicone - Vinyl
 Dimethicone/
 methicone
 Silsesquioxane
 Crosspolymer
 Distearidimonium
 Hectorite
 Magnesium Sulfate
 Butylene Glycol
 Centella Asiatica
 Extract - Talc
 Dimethicone/vinyl
 Dimethicone
 Crosspolymer
 Aluminum Hydroxide
 Trihydroxystearin
 Phenoxyethanol
 Mica - Methicone
 Palmitic Acid - Stearic
 Acid - Ethylhexylglyce-
 rin - Tocopheryl
 Acetate - Polyester-1-
 Silica Dimethyl Silylate
 - Triethoxycaprylylsi-
 lane
 Parfum/fragrance
 Hexyl Cinnamal
 Alpha-isomethyl
 Ionone - Linalool
 Citronellol - Geraniol
 Eugenol - Limonene
 CI 77492/iron Oxides
 CI 77288/chromium
 Oxide Greens - CI
 77491/iron Oxides - CI
 77499/iron Oxides

**Questions or
 comments?**

Call toll free
 1-888-975-2162

CC RED CORRECT

À LA CENTELLA ASIATICA

AUTOMATIC PERFECTOR
 SOOTHING EFFECT
 EVEN COMPLEXION

BROAD SPECTRUM
 SPF 25 SUNSCREEN

Redness corrector



15 ML NET WT. 0.5 OZ.

The Korean secret to a visibly perfect complexion lies in high-tech, multi-use formulas that help to improve the appearance of your skin. CC RED CORRECT is a versatile, illuminating formula: it contains green pigments to automatically help correct redness and encapsulated pigments to conceal other imperfections.

CC RED CORRECT adjusts to your skin tone and helps to enhance your complexion with its perfect color-correcting effect. The fine, green-colored formula transforms on contact with your skin, to immediately even out the appearance of redness and other imperfections.

Enriched with Centella asiatica, CC RED CORRECT helps to deliver radiance and hydration, while also providing a beautifying effect. Complexion irregularities are less visible, your skin looks perfect, feels soothed, and is visibly more beautiful. [Apply a fine layer to the face, like a day cream or as a makeup base.]

Tested under dermatological supervision. Non-comedogenic.

www.erborian.com
 Made in South Korea
 M&L - 108 rue de Richelieu -
 Paris - France

protection measures (see **Directions**), decreases the risk of skin cancer and early skin aging caused by the sun

Warnings

For external use only

Do not use ■ on damaged or broken skin

When using this product ■ keep out of eyes. Rinse with water to remove

Stop use and ask a doctor if ■ rash occurs.

Keep out of reach of children. If swallowed, get medical help or contact a Poison Control Center right away

Directions

For sunscreen use:

■ Apply liberally 15 minutes before sun exposure

■ Reapply at least every 2 hours

■ Use a water resistant sunscreen if swimming or sweating

■ **Sun Protection Measures.** Spending time in the sun increases your risk of skin cancer and early skin aging. To decrease this risk, regularly use a sunscreen with a Broad Spectrum SPF value of 15 or higher and other sun protection measures including:

■ Limit time in the sun, especially from 10 a.m. -2 p.m.

■ Wear long-sleeved shirts, pants, hats and sunglasses

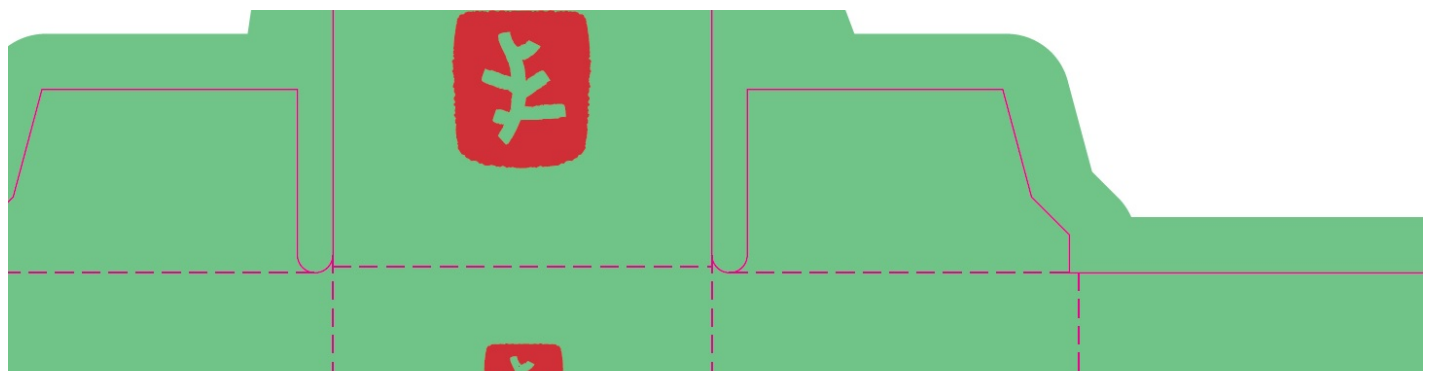
■ Children under 6 months of age: Ask a doctor

Other information

■ Protect the product in this container from excessive heat and direct sun



ERBORIAN - CC RED CORRECT SPF 25 45ml (10345-912-45)



CC RED CORRECT

À LA CENTELLA ASIATICA

AUTOMATIC PERFECTOR
 SOOTHING EFFECT
 EVEN COMPLEXION

BROAD SPECTRUM
 SPF 25 SUNSCREEN

Redness corrector



45 ML
 NET WT. 1.5 OZ.

The Korean secret to a visibly perfect complexion lies in high-tech, multi-use formulas that help to improve the appearance of your skin. **CC RED CORRECT** is a versatile, illuminating formula: it contains green pigments to automatically help correct redness and encapsulated pigments to conceal other imperfections.

CC RED CORRECT adjusts to your skin tone and helps to enhance your complexion with its perfect color-correcting effect. The fine, green-colored formula transforms on contact with your skin, to immediately even out the appearance of redness and other imperfections. Enriched with *Centella asiatica*, **CC RED CORRECT** helps to deliver radiance and hydration, while also providing a beautifying effect. Complexion irregularities are less visible, your skin looks perfect, feels soothed, and is visibly more beautiful. [Apply a fine layer to the face, like a day cream or as a makeup base.]

Tested under dermatological supervision. Non-comedogenic.

www.erborian.com
 Made in South Korea
 M&L - 108 rue de Richelieu - Paris
 - France

Drug Facts (continued)

Other information

■ Protect the product in this container from excessive heat and direct sun

Inactive ingredients

Aqua/water - Cyclomethicone -
 Dipropylene Glycol - Glycerin -
 Peg-10 Dimethicone - Methyl
 Trimethicone - Cl
 77891/titanium Dioxide - C12-15
 Alkyl Benzoate - Dimethicone -
 Vinyl Dimethicone/methicone
 Silsesquioxane Crosspolymer -
 Distearidimonium Hectorite -
 Magnesium Sulfate - Butylene
 Glycol - Centella Asiatica Extract
 - Talc - Dimethicone/vinyl
 Dimethicone Crosspolymer -
 Aluminum Hydroxide -
 Trihydroxystearin -
 Phenoxyethanol - Mica -
 Methicone - Palmitic Acid -
 Stearic Acid - Ethylhexylglycerin
 - Tocopheryl Acetate -
 Polyester-1 - Silica Dimethyl
 Silylate - Triethoxycaprylsilane
 - Parfum/fragrance - Hexyl
 Cinnamal - Alpha-isomethyl
 Ionone - Linalool - Citronellol -
 Geraniol - Eugenol - Limonene -
 Cl 77492/iron Oxides - Cl
 77288/chromium Oxide Greens -
 Cl 77491/iron Oxides - Cl
 77499/iron Oxides

Questions Or Comments?

Call Toll Free
 1-888-975-2162

Drug Facts

Active ingredients Purpose

Ethylhexyl methoxycinnamate
 6%.....Sunscreen
 Ethylhexyl salicylate 2%..Sunscreen
 Titanium dioxide 2.34%..Sunscreen
 Zinc oxide 3.84%.....Sunscreen

Uses

■ Helps prevent sunburn
 ■ If used as directed with other
 sun protection measures (see
Directions), decreases the risk of
 skin cancer and early skin aging
 caused by the sun

Warnings

For external use only

Do not use ■ on damaged or broken skin

When using this product ■ keep out of eyes. Rinse with water to remove

Stop use and ask a doctor if

■ rash occurs.
 ■ **Keep out of reach of children.** If
 swallowed, get medical help or
 contact a Poison Control Center
 right away

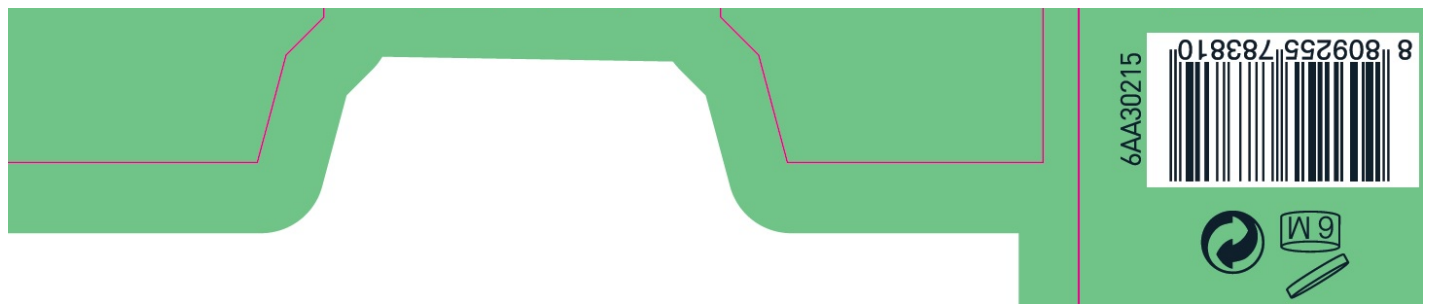
Directions

For sunscreen use:

■ Apply liberally 15 minutes be-
 fore sun exposure
 ■ Reapply at least every 2 hours
 ■ Use a water resistant sunscreen
 if swimming or sweating
 ■ **Sun Protection Measures.**

Spending time in the sun in-
 creases your risk of skin cancer
 and early skin aging. To decrease
 this risk, regularly use a sunscreen
 with a Broad Spectrum SPF value
 of 15 or higher and other sun pro-
 tection measures including:

■ Limit time in the sun, especially
 from 10 a.m. -2 p.m.
 ■ Wear long-sleeved shirts, pants,
 hats and sunglasses
 ■ Children under 6 months of age:
 Ask a doctor



ERBORIAN CC RED CORRECT SPF 25

octinoxate, octisalate, titanium dioxide, zinc oxide cream

Product Information

Product Type	HUMAN OTC DRUG	Item Code (Source)	NDC:10345-912
Route of Administration	TOPICAL		

Active Ingredient/Active Moiety

Ingredient Name	Basis of Strength	Strength
OCTINOXATE (UNII: 4Y5P7MUD51) (OCTINOXATE - UNII:4Y5P7MUD51)	OCTINOXATE	60 mg in 1 mL
OCTISALATE (UNII: 4X49Y0596W) (OCTISALATE - UNII:4X49Y0596W)	OCTISALATE	20 mg in 1 mL
TITANIUM DIOXIDE (UNII: 15FIX9V2JP) (TITANIUM DIOXIDE - UNII:15FIX9V2JP)	TITANIUM DIOXIDE	23.4 mg in 1 mL
ZINC OXIDE (UNII: SOI2LOH54Z) (ZINC CATION - UNII:13S1S8SF37)	ZINC CATION	38.4 mg in 1 mL

Inactive Ingredients

Ingredient Name	Strength
PHENOXYETHANOL (UNII: HIE492ZZ3T)	
MICA (UNII: V8A1AW0880)	
METHICONE (20 CST) (UNII: 6777U11MKT)	
PALMITIC ACID (UNII: 2V16EO95H1)	
STEARIC ACID (UNII: 4ELV7Z65AP)	
ETHYLHEXYLGLYCERIN (UNII: 147D247K3P)	
POLYESTER-10 (UNII: 212N9O2MMZ)	
SILICA DIMETHYL Silylate (UNII: EU2PSP0G0W)	
TRIETHOXYCAPRYLYLSILANE (UNII: LDC331P08E)	
.ALPHA.-HEXYLCINNAMALDEHYDE (UNII: 7X6O37OK2I)	
ISOMETHYL-.ALPHA.-IONONE (UNII: 9XP4LC555B)	
LINALOOL, (+/-)- (UNII: D81QY6I88E)	
.BETA.-CITRONELLOL, (R)- (UNII: P01OUT964K)	
GERANIOL (UNII: L837108USY)	
EUGENOL (UNII: 3T8H1794QW)	
LIMONENE, (+)- (UNII: GFD7C86Q1W)	
FERRIC OXIDE YELLOW (UNII: EX438O2MRT)	
CHROMIC OXIDE (UNII: X5Z09SU859)	
FERRIC OXIDE RED (UNII: 1K09F3G675)	
FERROSO FERRIC OXIDE (UNII: XM0M87F357)	
WATER (UNII: 059QF0KO0R)	

CYCLOMETHICONE (UNII: NMQ347994Z)
DIPROPYLENE GLYCOL (UNII: E107L85C40)
GLYCERIN (UNII: PDC6A3C0OX)
PEG-10 DIMETHICONE (600 CST) (UNII: 8PR7V1SVM0)
METHYL TRIMETHICONE (UNII: S73ZQI0GXM)
ALKYL (C12-15) BENZOATE (UNII: A9EJ3J61HQ)
DIMETHICONE (UNII: 92RU3N3Y1O)
VINYL DIMETHICONE/METHICONE SILSESQUIOXANE CROSSPOLYMER (UNII: 9NH1UDD2RR)
DISTEARDIMONIUM HECTORITE (UNII: X687XDK09L)
MAGNESIUM SULFATE, UNSPECIFIED FORM (UNII: DE08037SAB)
BUTYLENE GLYCOL (UNII: 3XUS85K0RA)
CENTELLA ASIATICA (UNII: 7M867G6T1U)
TALC (UNII: 7SEV7J4R1U)
ALUMINUM HYDROXIDE (UNII: 5QB0T2IUN0)
TRIHYDROXYSTEARIN (UNII: 06YD7896S3)

Packaging

#	Item Code	Package Description	Marketing Start Date	Marketing End Date
1	NDC:10345-912-15	1 in 1 BOX	07/01/2018	
1		15 mL in 1 TUBE; Type 0: Not a Combination Product		
2	NDC:10345-912-45	1 in 1 BOX	07/01/2018	
2		45 mL in 1 TUBE; Type 0: Not a Combination Product		

Marketing Information

Marketing Category	Application Number or Monograph Citation	Marketing Start Date	Marketing End Date
OTC Monograph Drug	M020	07/01/2018	

Labeler - Laboratoires M&L (262533623)

Revised: 10/2023

Laboratoires M&L