

WORMWOOD BELLY BUTTON PATCH- armoise oil patch
Guangzhou Bomei Cross border Supply Chain Management Co., Ltd

Wormwood Belly Button Patch

Armoise oil 1%

Slimming

Put it out of the reach of children to avoid accidental ingestion

Uses: Tight shaping helps with body beauty

1. Put it out of the reach of children to avoid accidental ingestion
2. If you feel uncomfortable, please stop using it immediately
3. Do not use on skin injury or swelling
4. Sensitive skin, test on the inside of the wrist before use. Use without irritation

INSTRUCTIONS: Take one tablet every night before going to bed. In the navel, special belly button stickers are fixed. Take it out the next day when you wake up. You can also take two more stickers. The Yongquan point on both feet was removed the next morning.

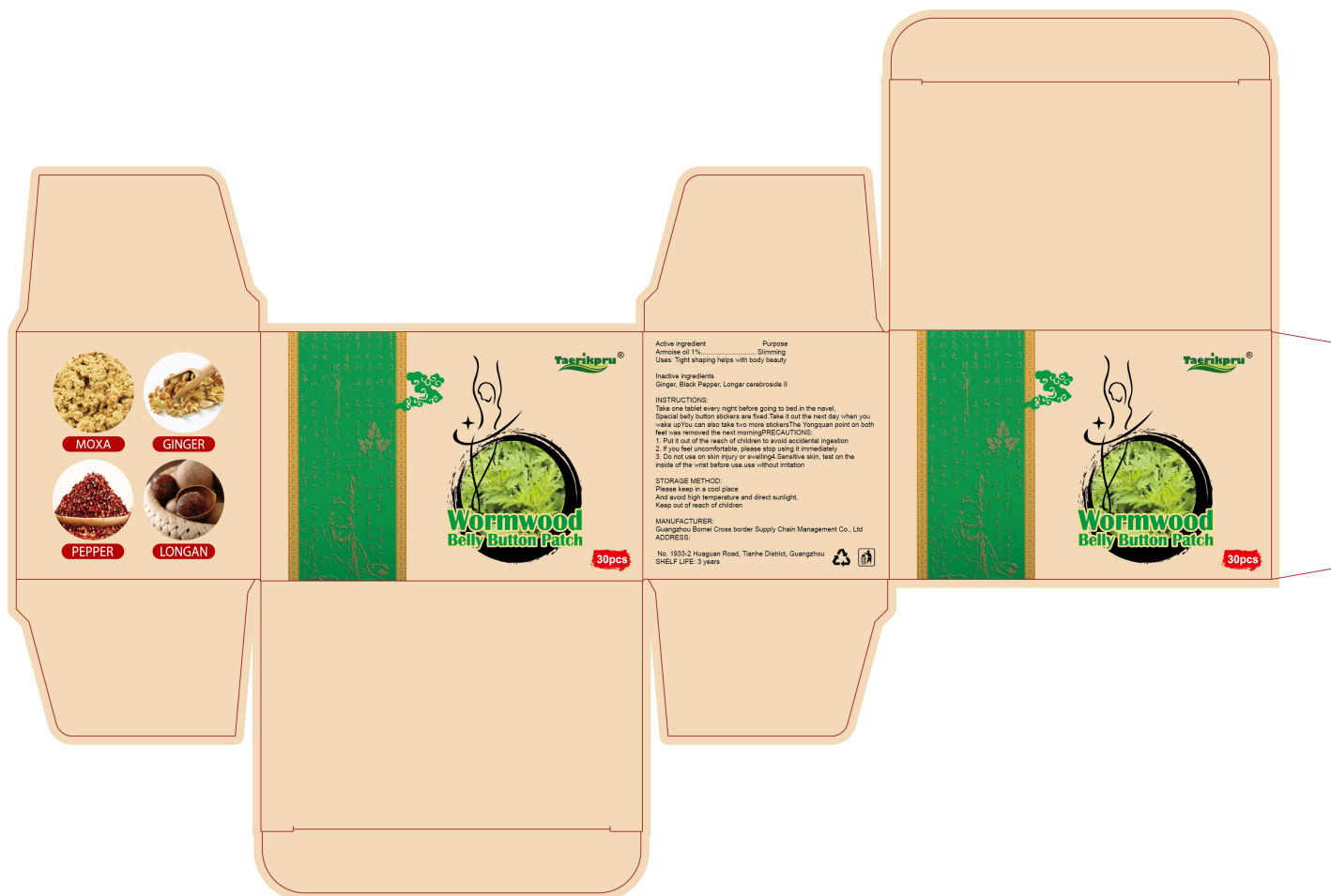
STORAGE METHOD: Please keep in a cool place and avoid high temperature and direct sunlight. Keep out of reach of children.

GINGER

BLACK PEPPER

BAICALIN

LONGAN CEREBROSIDE II



WORMWOOD BELLY BUTTON PATCH

aromose oil patch

Product Information

Product Type	HUMAN OTC DRUG	Item Code (Source)	NDC:84537-004
Route of Administration	TOPICAL		

Active Ingredient/Active Moiety

Ingredient Name	Basis of Strength	Strength
ARTEMISIA VULGARIS TOP OIL (UNII: 72Q967Y48V) (ARTEMISIA VULGARIS TOP OIL - UNII:72Q967Y48V)	ARTEMISIA VULGARIS TOP OIL	0.01 g

Inactive Ingredients

Ingredient Name	Strength
BLACK PEPPER (UNII: KM66971LVF)	
LONGAN CEREBROSIDE II (UNII: A2JXP6CCT4)	
BAICALIN (UNII: 347Q89U4M5)	
GINGER (UNII: C5529G5JPQ)	

Packaging

#	Item Code	Package Description	Marketing Start Date	Marketing End Date
1	NDC:84537-004-01	30 in 1 BOX; Type 0: Not a Combination Product	09/23/2024	

Marketing Information

Marketing Category	Application Number or Monograph Citation	Marketing Start Date	Marketing End Date
OTC Monograph Drug	505G(a)(3)	09/23/2024	

Labeler - Guangzhou Bomei Cross border Supply Chain Management Co., Ltd (403103055)

Establishment

Name	Address	ID/FEI	Business Operations
Guangzhou Bomei Cross border Supply Chain Management Co., Ltd		403103055	manufacture(84537-004)

Revised: 9/2024

Guangzhou Bomei Cross border Supply Chain Management Co., Ltd