

CLOBETASOL PROPIONATE- clobetasol propionate suspension/ drops

Bora Pharmaceuticals Ophthalmic Inc. Taoyuan plant

HIGHLIGHTS OF PRESCRIBING INFORMATION

These highlights do not include all the information needed to use CLOBETASOL PROPIONATE OPHTHALMIC SUSPENSION 0.05% safely and effectively. See full prescribing information for CLOBETASOL PROPIONATE OPHTHALMIC SUSPENSION 0.05%.

**CLOBETASOL PROPIONATE OPHTHALMIC SUSPENSION 0.05%,
for topical ophthalmic use
Initial U.S. Approval: 1985**

INDICATIONS AND USAGE

Clobetasol Propionate Ophthalmic Suspension 0.05% is a corticosteroid indicated for the treatment of post-operative inflammation and pain following ocular surgery. (1)

DOSAGE AND ADMINISTRATION

- Instill one drop of clobetasol propionate ophthalmic suspension 0.05% into the affected eye twice daily beginning the day after surgery and continuing throughout the first 2 weeks of the post-operative period. (2.1)
- Wash hands well before each use. (2.2)

DOSAGE FORMS AND STRENGTHS

Ophthalmic suspension containing clobetasol propionate 0.05%. (3)

CONTRAINDICATIONS

Clobetasol Propionate Ophthalmic Suspension 0.05% is contraindicated in most active viral diseases of the cornea and conjunctiva, including epithelial herpes simplex keratitis (dendritic keratitis), vaccinia, and varicella, and also in mycobacterial infection of the eye and fungal diseases of ocular structures. (4)

WARNINGS AND PRECAUTIONS

- Intraocular Pressure (IOP) Increase: Prolonged use of corticosteroids may result in glaucoma with damage to the optic nerve, defects in visual acuity and fields of vision. Steroids should be used with caution in the presence of glaucoma. If this product is used for 10 days or longer, IOP should be monitored. (5.1)
- Cataracts: Prolonged use of corticosteroids may result in posterior subcapsular cataract formation. (5.2)
- Delayed Healing: The use of steroids after cataract surgery may delay healing and increase the incidence of bleb formation. (5.3)
- Corneal and Scleral Melting: In those diseases causing thinning of the cornea or sclera, perforations have been known to occur with the use of topical steroids. The initial prescription and renewal of the medication order should be made by a physician only after examination of the patient with the aid of magnification, such as slit lamp biomicroscopy, and where appropriate, fluorescein staining. (5.4)
- Bacterial Infections: Prolonged use of corticosteroids may suppress the host response and thus increase the hazard of secondary ocular infections. In acute purulent conditions, steroids may mask infection or enhance existing infection. If signs and symptoms fail to improve after 2 days, the patient should be reevaluated. (5.5)
- Viral Infections: Employment of a corticosteroid medication in the treatment of patients with a history of herpes simplex requires great caution. Use of ocular steroids may prolong the course and may exacerbate the severity of many viral infections of the eye (including herpes simplex). (5.6)
- Fungal Infections: Fungal infections of the cornea are particularly prone to develop coincidentally with long-term local steroid application. Fungus invasion must be considered in any persistent corneal ulceration where a steroid has been used or is in use. Fungal culture should be taken when appropriate. (5.7)

ADVERSE REACTIONS

Ocular adverse reactions occurring in $\geq 1\%$ of subjects in clinical studies who received clobetasol propionate ophthalmic suspension 0.05% included eye inflammation (2%), corneal edema (2%), anterior chamber inflammation (2%), cystoid macular edema (2%), intraocular pressure elevation (1%), photophobia (1%) and vitreous detachment (1%). Many of these reactions may have been the consequence of the surgical procedure (6.1).

To report **SUSPECTED ADVERSE REACTIONS**, contact Eyenovia, Inc. at 1-833-393-6684 or FDA at 1-800-FDA-1088 or www.fda.gov/medwatch. See 17 for **PATIENT COUNSELING INFORMATION**.

Revised: 3/2024

FULL PRESCRIBING INFORMATION: CONTENTS*

1 INDICATIONS AND USAGE

2 DOSAGE AND ADMINISTRATION

- 2.1 Recommended Dosage
- 2.2 Administration Instructions

3 DOSAGE FORMS AND STRENGTHS

4 CONTRAINDICATIONS

5 WARNINGS AND PRECAUTIONS

- 5.1 Intraocular Pressure (IOP) Increase
- 5.2 Cataracts
- 5.3 Delayed Healing
- 5.4 Corneal and Scleral Melting
- 5.5 Bacterial Infections
- 5.6 Viral Infections
- 5.7 Fungal Infections
- 5.8 Risk of Contamination
- 5.9 Contact Lens Wear

6 ADVERSE REACTIONS

- 6.1 Clinical Trials Experience

8 USE IN SPECIFIC POPULATIONS

- 8.1 Pregnancy
- 8.2 Lactation
- 8.4 Pediatric Use
- 8.5 Geriatric Use

11 DESCRIPTION

12 CLINICAL PHARMACOLOGY

- 12.1 Mechanism of Action
- 12.2 Pharmacodynamics
- 12.3 Pharmacokinetics

13 NONCLINICAL TOXICOLOGY

- 13.1 Carcinogenesis, Mutagenesis, Impairment of Fertility

14 CLINICAL STUDIES

16 HOW SUPPLIED/STORAGE AND HANDLING

- 16.1 How Supplied
- 16.2 Storage and Handling

17 PATIENT COUNSELING INFORMATION

* Sections or subsections omitted from the full prescribing information are not listed.

FULL PRESCRIBING INFORMATION

1 INDICATIONS AND USAGE

Clobetasol Propionate Ophthalmic Suspension 0.05% is indicated for the treatment of post-operative inflammation and pain following ocular surgery.

2 DOSAGE AND ADMINISTRATION

2.1 Recommended Dosage

Instill one drop of Clobetasol Propionate Ophthalmic Suspension 0.05% into the affected eye twice daily beginning the day after surgery and continuing throughout the first 2 weeks of the post-operative period.

2.2 Administration Instructions

Wash hands well before each use.

If using other eye drops in addition to Clobetasol Propionate Ophthalmic Suspension 0.05%, wait at least 5 minutes between instillation of Clobetasol Propionate Ophthalmic Suspension 0.05% and other eye drops.

3 DOSAGE FORMS AND STRENGTHS

Ophthalmic suspension containing clobetasol propionate 0.05% (0.5 mg/mL).

4 CONTRAINDICATIONS

Clobetasol Propionate Ophthalmic Suspension 0.05% is contraindicated in most active viral diseases of the cornea and conjunctiva, including epithelial herpes simplex keratitis (dendritic keratitis), vaccinia, and varicella, and also in mycobacterial infection of the eye and fungal diseases of ocular structures.

5 WARNINGS AND PRECAUTIONS

5.1 Intraocular Pressure (IOP) Increase

Prolonged use of corticosteroids may result in glaucoma with damage to the optic nerve, defects in visual acuity and fields of vision. Steroids should be used with caution in the presence of glaucoma. If Clobetasol Propionate Ophthalmic Suspension 0.05% is used for 10 days or longer, IOP should be monitored.

5.2 Cataracts

Prolonged use of corticosteroids may result in posterior subcapsular cataract formation.

5.3 Delayed Healing

The use of corticosteroids after cataract surgery may delay healing and increase the

incidence of bleb formation.

5.4 Corneal and Scleral Melting

In those diseases causing thinning of the cornea or sclera, perforations have been known to occur with the use of topical corticosteroids. The initial prescription and renewal of the medication order should be made by a physician only after examination of the patient with the aid of magnification, such as slit lamp biomicroscopy, and where appropriate, fluorescein staining .

5.5 Bacterial Infections

Prolonged use of corticosteroids may suppress the host response and thus increase the hazard of secondary ocular infections. In acute purulent conditions, steroids may mask infection or enhance existing infection. If signs and symptoms fail to improve after 2 days, the patient should be reevaluated.

5.6 Viral Infections

Employment of a corticosteroid medication in the treatment of patients with a history of herpes simplex requires great caution. Use of ocular corticosteroids may prolong the course and may exacerbate the severity of many viral infections of the eye (including herpes simplex).

5.7 Fungal Infections

Fungal infections of the cornea are particularly prone to develop coincidentally with long-term local corticosteroid application. Fungus invasion must be considered in any persistent corneal ulceration where a corticosteroid has been used or is in use. Fungal culture should be taken when appropriate.

5.8 Risk of Contamination

Do not allow the dropper tip to touch any surface, as this may contaminate the ophthalmic suspension.

5.9 Contact Lens Wear

Clobetasol Propionate Ophthalmic Suspension 0.05% should not be instilled while wearing contact lenses. Remove contact lenses prior to instillation of Clobetasol Propionate Ophthalmic Suspension 0.05%. The preservative in Clobetasol Propionate Ophthalmic Suspension 0.05% may be absorbed by soft contact lenses. Lenses may be reinserted after 15 minutes following administration of clobetasol propionate ophthalmic suspension 0.05%.

6 ADVERSE REACTIONS

The following serious reactions are found elsewhere in the labeling:

- Intraocular Pressure (IOP) Increase [see *Warnings and Precautions (5.1)*]
- Posterior Subcapsular Cataract Formation [see *Warnings and Precautions (5.2)*]
- Delayed Healing [see *Warnings and Precautions (5.3)*]
- Corneal and Scleral Melting [see *Warnings and Precautions (5.4)*]

- Bacterial Infections [see Warnings and Precautions (5.5)]
- Viral Infections [see Warnings and Precautions (5.6)]
- Fungal Infections [see Warnings and Precautions (5.7)]

6.1 Clinical Trials Experience

Because clinical trials are conducted under widely varying conditions, adverse reaction rates observed in the clinical trials of a drug cannot be directly compared to rates in the clinical trials of another drug and may not reflect the rates observed in practice.

Ocular adverse reactions occurring in $\geq 1\%$ of subjects in clinical studies who received Clobetasol Propionate Ophthalmic Suspension 0.05% included eye inflammation (2%), corneal edema (2%), anterior chamber inflammation (2%), cystoid macular edema (2%), intraocular pressure elevation (1%), photophobia (1%) and vitreous detachment (1%). Many of these reactions may have been the consequence of the surgical procedure.

8 USE IN SPECIFIC POPULATIONS

8.1 Pregnancy

Risk Summary

There are no adequate and well-controlled clinical studies of Clobetasol Propionate Ophthalmic Suspension 0.05% administration in pregnant women to inform drug-associated risks. Plasma concentrations of clobetasol propionate were minimal following topical ophthalmic administration of Clobetasol Propionate Ophthalmic Suspension 0.05% [see *Clinical Pharmacology* (12.3)] . However, corticosteroids, including clobetasol propionate have been shown to be teratogenic and fetotoxic in laboratory animals when administered systemically at relatively low dosage levels (see *Data*) .

Clobetasol Propionate Ophthalmic Suspension 0.05% should be used during pregnancy only if the potential benefit justifies the potential risk to the fetus.

In the US general population, the estimated background risk of major birth defects and miscarriage in clinically recognized pregnancies is 2-4% and 15-20%, respectively.

Data

Animal Data

In embryofetal development studies in mice, clobetasol propionate was fetotoxic at the highest subcutaneous dose tested (1 mg/kg) and teratogenic at all subcutaneous dose levels tested down to 0.03 mg/kg. Abnormalities observed included cleft palate and skeletal abnormalities. These doses are approximately 98 times and 3 times, respectively, the recommended human ophthalmic dose of Clobetasol Propionate Ophthalmic Suspension 0.05%, estimated based on body surface area and assuming 100% systemic absorption.

In embryofetal development studies in rabbits, clobetasol propionate was teratogenic at subcutaneous doses of 3 and 10 $\mu\text{g}/\text{kg}$. Abnormalities seen included cleft palate, cranioschisis, and other skeletal abnormalities. These doses are approximately 1.2 times and 3.9 times, respectively, the recommended human ophthalmic dose of Clobetasol Propionate Ophthalmic Suspension 0.05%, estimated based on body surface area and assuming 100% systemic absorption.

8.2 Lactation

Risk Summary

There is no information regarding the presence of clobetasol propionate in human milk, the effects on the breastfed infant, or the effects on milk production.

Systemically administered corticosteroids appear in human milk and could suppress growth, interfere with endogenous corticosteroid production, or cause other untoward effects. However, systemic levels of clobetasol propionate following topical ocular administration are minimal [see *Clinical Pharmacology (12.3)*], and it is not known whether measurable levels of clobetasol propionate would be present in maternal milk following topical ocular administration.

The developmental and health benefits of breastfeeding should be considered along with the mother's clinical need for Clobetasol Propionate Ophthalmic Suspension 0.05%, and any potential adverse effects on the breastfed infant from Clobetasol Propionate Ophthalmic Suspension 0.05%.

8.4 Pediatric Use

The safety and effectiveness of Clobetasol Propionate Ophthalmic Suspension 0.05% in pediatric patients have not been established.

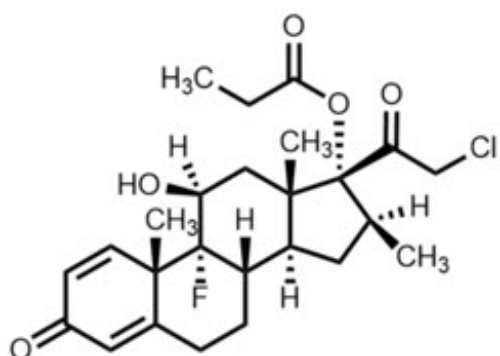
8.5 Geriatric Use

No overall differences in safety and effectiveness of Clobetasol Propionate Ophthalmic Suspension 0.05% have been observed between patients 65 years of age and older and younger adult patients.

11 DESCRIPTION

Clobetasol Propionate Ophthalmic Suspension 0.05% contains the active compound clobetasol propionate, a synthetic corticosteroid, that has a high degree of glucocorticoid activity and a slight degree of mineralocorticoid activity.

Chemically, clobetasol propionate is 21-chloro-9-fluoro-11 β ,17-dihydroxy-16 β -methylpregna-1,4-diene-3,20-dione 17-propionate and it has the following structural formula:



Clobetasol propionate has the empirical formula C₂₅H₃₂ClFO₅ and a molecular weight of

467.

Clobetasol Propionate Ophthalmic Suspension 0.05% contains a sterile, anti-inflammatory corticosteroid for topical ophthalmic use.

Each mL of Clobetasol Propionate Ophthalmic Suspension 0.05% contains:

ACTIVE: clobetasol propionate 0.5 mg (0.05%)

INACTIVES: sodium chloride, hydrogenated soybean lecithin, citric acid, glycerin, poloxamer 407, polyvinyl alcohol, boric acid, edetate disodium dihydrate, methylcellulose, trisodium citrate, and water for injection

PRESERVATIVE: benzalkonium chloride 0.0036%.

12 CLINICAL PHARMACOLOGY

12.1 Mechanism of Action

Like other topical corticosteroids, clobetasol propionate has anti-inflammatory, antipruritic, and vasoconstrictive properties. The mechanism of the anti-inflammatory activity of the topical steroids, in general, is unclear. However, corticosteroids are thought to act by the induction of phospholipase A₂ inhibitory proteins, collectively called lipocortins. It is postulated that these proteins control the biosynthesis of potent mediators of inflammation such as prostaglandins and leukotrienes by inhibiting the release of their common precursor, arachidonic acid. Arachidonic acid is released from membrane phospholipids by phospholipase A₂.

12.2 Pharmacodynamics

In patients treated with Clobetasol Propionate Ophthalmic Suspension 0.05% twice daily for 21 days, the mean (SD) changes from baseline in cortisol concentrations, -18.1 (126.2) nmol/L and +5.1 (129.8) nmol/L for the Clobetasol Propionate Ophthalmic Suspension 0.05% and matching vehicle arms, respectively, were not statistically significant, considering the variability observed in the cortisol concentrations.

12.3 Pharmacokinetics

After the first and second (12 hours apart) ocular instillations of Clobetasol Propionate Ophthalmic Suspension 0.05% in healthy adults (n=12), peak plasma clobetasol propionate concentrations (C_{max}) were below the lower limit of quantitation (LLOQ, 0.04 ng/mL) in 13 out of 22 PK profiles and ranged from 0.040 to 0.182 ng/mL in the other 9 profiles. Time to peak concentration (T_{max}) was observed between 0.5 - 1 hour post-dose. Clobetasol propionate concentrations declined to lower than LLOQ after 4 to 5 hours post-dose.

13 NONCLINICAL TOXICOLOGY

13.1 Carcinogenesis, Mutagenesis, Impairment of Fertility

Carcinogenesis

Long-term animal studies have not been performed with Clobetasol Propionate

Ophthalmic Suspension 0.05% to evaluate the carcinogenic potential of clobetasol propionate.

Mutagenesis

Clobetasol propionate was not mutagenic in 3 different test systems: the Ames test, the *Saccharomyces cerevisiae* gene conversion assay, and the *E. coli* B WP2 fluctuation test.

Impairment of Fertility

Fertility studies in the rat following subcutaneous administration at dosage levels up to 50 µg/kg/day revealed that the females exhibited an increase in the number of resorbed embryos and a decrease in the number of living fetuses at the highest dose. This dose is approximately 10 times the recommended human ophthalmic dose of Clobetasol Propionate Ophthalmic Suspension 0.05% (0.83 µg/kg/day), estimated based on body surface area and assuming 100% systemic absorption. Note that systemic levels of clobetasol propionate following topical ocular administration are minimal [see *Clinical Pharmacology (12.3)*].

14 CLINICAL STUDIES

Clinical efficacy was evaluated in 2 multi-center, randomized, double-masked, vehicle-controlled trials in which patients had ≥ 10 cells in the anterior chamber after cataract surgery were assigned to Clobetasol Propionate Ophthalmic Suspension 0.05% (N=366) or vehicle (N=382) (NCT04739709 (Study 1) and NCT04810962 (Study 2)). One drop of Clobetasol Propionate Ophthalmic Suspension 0.05% or vehicle was self-administered twice a day for 14 days, beginning on the day after surgery. Complete resolution of inflammation (an anterior chamber cell count of 0 maintained through Day 15 without rescue medication) and complete resolution of pain (a patient-reported pain grade of 0 maintained through Day 15 without rescue medication) were assessed at post-operative day (POD) 4, 8, and 15.

The co-primary efficacy endpoints were the proportion of subjects with Anterior Chamber Cell (ACC) count = 0 (ACC grade = 0) at POD8 maintained through POD15, and the proportion of subjects with Ocular Pain Grade = 0 at POD4 maintained through POD15. In the intent-to-treat analysis, both co-primary efficacy endpoints were statistically significantly better in Clobetasol Propionate Ophthalmic Suspension 0.05%-treated patients compared to vehicle-treated patients ($p < 0.01$). The clinical trial efficacy results from both studies are provided below.

Figure 1: Percent of Patients with Anterior Chamber Cell Count = 0 at Post-Operative Days 8 and 15

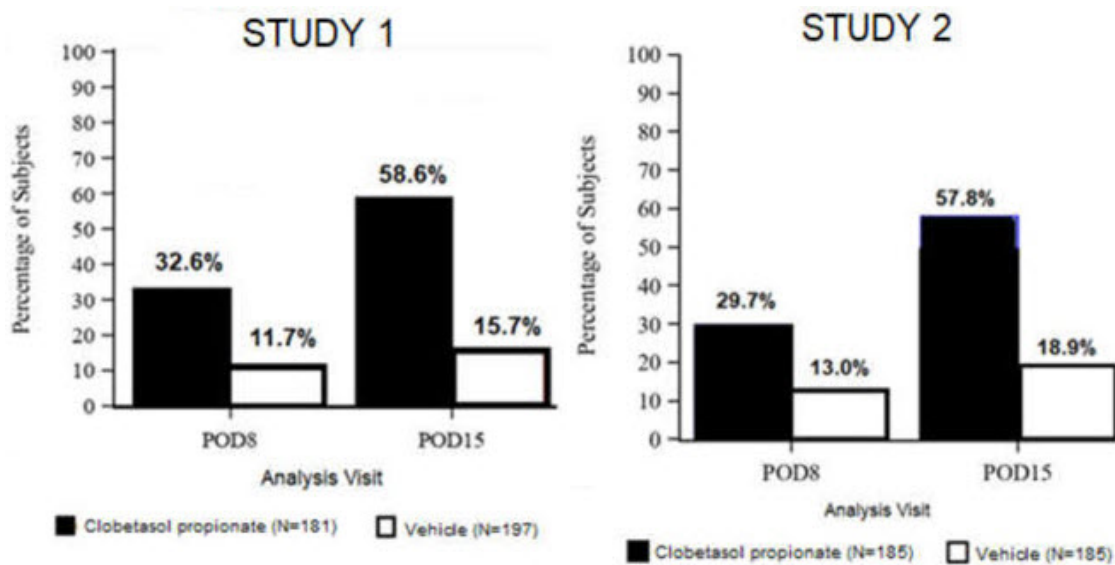
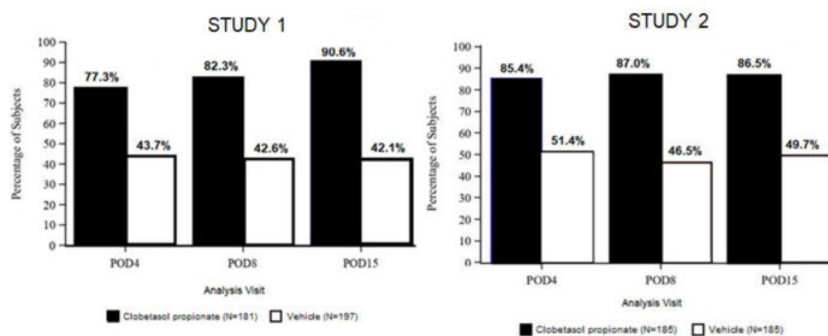


Figure 2: Percent of Patients with Complete Resolution of Pain at Post-Operative Days 4, 8, and 15



16 HOW SUPPLIED/STORAGE AND HANDLING

16.1 How Supplied

Clobetasol Propionate Ophthalmic Suspension 0.05% (0.5 mg/mL) is a sterile ophthalmic suspension. It is supplied in a multi-dose white low-density polyethylene plastic 5 mL eye-dropper bottle with a low-density polyethylene white tip and a high-density polyethylene pink cap with a tamper-proof ring at the bottom of the cap.

3.5 mL in a 5 mL bottle (NDC 81046-0319-1)

16.2 Storage and Handling

- Do not use if tamper-evident ring seal is broken.
- Keep the bottle tightly closed with the pink cap when not in use.

Store upright at 15°C to 25°C (59°F to 77°F). Do not freeze. After opening, Clobetasol Propionate Ophthalmic Suspension 0.05% can be used until the expiration date on the bottle.

17 PATIENT COUNSELING INFORMATION

Administration with Other Eye Drops

Advise patients to wait at least 5 minutes between instillation of Clobetasol Propionate Ophthalmic Suspension 0.05% and other eye drops if using other eye drops in addition to Clobetasol Propionate Ophthalmic Suspension 0.05%.

Risk of Contamination

Advise patients to wash their hands well before each use. Advise patients not to allow the dropper tip to touch any surface, as this may contaminate the ophthalmic suspension.

When to Seek Physician Advice

Advise patients to consult a physician if pain develops; or if redness, itching, or inflammation becomes aggravated.

Contact Lens Wear

Advise patients that the preservative in Clobetasol Propionate Ophthalmic Suspension 0.05% may be absorbed by soft contact lenses. Contact lenses should be removed prior to instillation of Clobetasol Propionate Ophthalmic Suspension 0.05% and may be reinserted after 15 minutes following administration.

Manufactured for: Eyenovia Inc. by Formosa Pharmaceuticals Inc

PRINCIPAL DISPLAY PANEL - 3.5 mL Bottle Carton

NDC #: 81046-0319-1

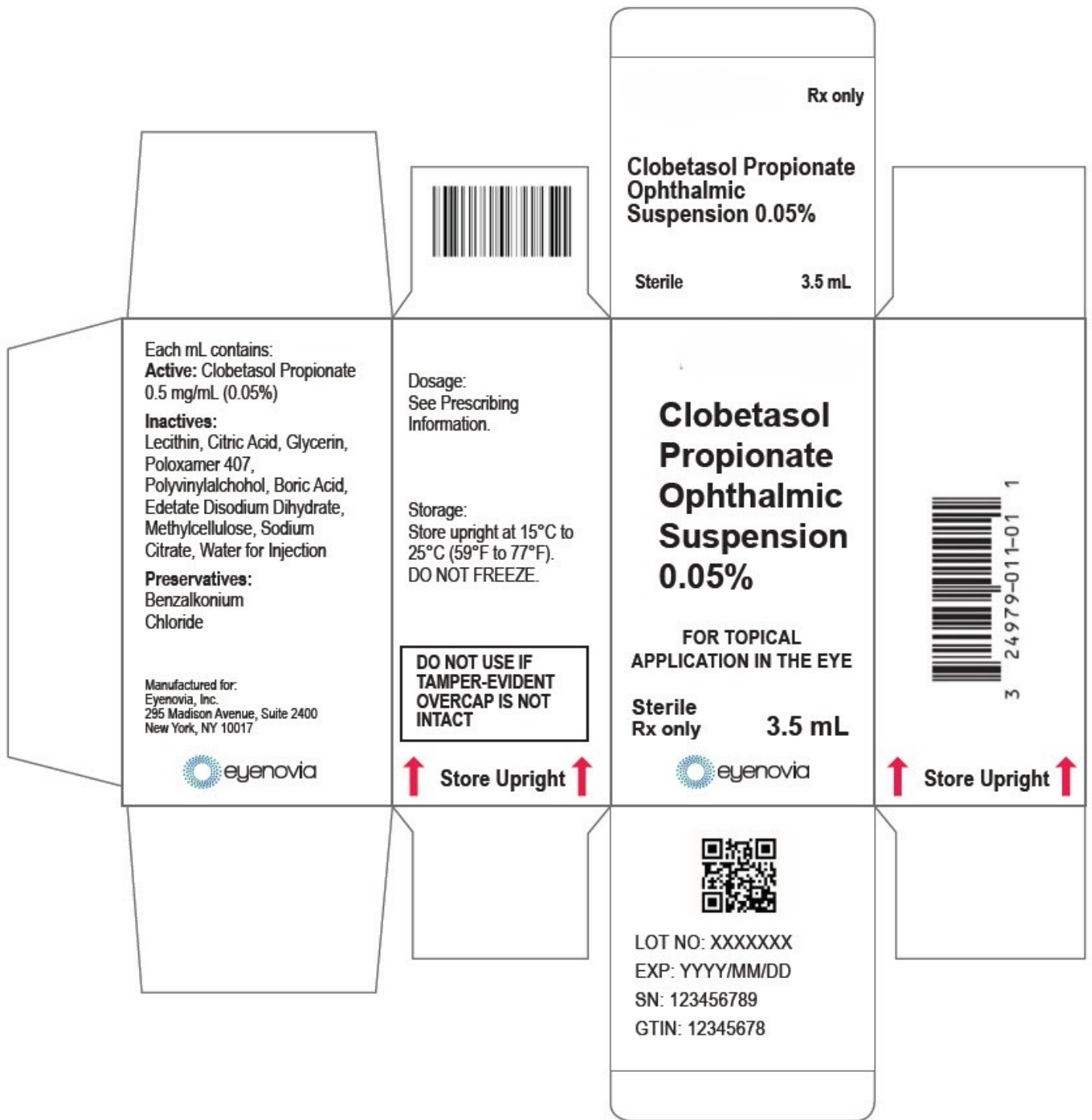
Clobetasol
Propionate
Ophthalmic
Suspension
0.05%

FOR TOPICAL
APPLICATION IN THE EYE

Sterile
Rx only

3.5 mL

eyenovia



CLOBETASOL PROPIONATE

clobetasol propionate suspension/ drops

Product Information

| | | | |
|--------------------------------|-------------------------|---------------------------|---------------|
| Product Type | HUMAN PRESCRIPTION DRUG | Item Code (Source) | NDC:81772-007 |
| Route of Administration | OPHTHALMIC | | |

Active Ingredient/Active Moiety

| Ingredient Name | | Basis of Strength | Strength | |
|---|--|---|----------------------|--------------------|
| CLOBETASOL PROPIONATE (UNII: 779619577M) (CLOBETASOL - UNII:ADN79D536H) | | CLOBETASOL PROPIONATE | 0.5 mg in 1 mL | |
| Inactive Ingredients | | | | |
| Ingredient Name | | | Strength | |
| SODIUM CHLORIDE (UNII: 451W47IQ8X) | | | | |
| HYDROGENATED SOYBEAN LECITHIN (UNII: H1109Z9J4N) | | | | |
| ANHYDROUS CITRIC ACID (UNII: XF417D3PSL) | | | | |
| GLYCERIN (UNII: PDC6A3C0OX) | | | | |
| POLOXAMER 407 (UNII: TUF2IVW3M2) | | | | |
| POLYVINYL ALCOHOL, UNSPECIFIED (UNII: 532B59J990) | | | | |
| BORIC ACID (UNII: R57ZHV85D4) | | | | |
| EDETATE DISODIUM (UNII: 7FLD91C86K) | | | | |
| BENZALKONIUM CHLORIDE (UNII: F5UM2KM3W7) | | | | |
| METHYLCELLULOSE, UNSPECIFIED (UNII: Z944H5SN0H) | | | | |
| ANHYDROUS TRISODIUM CITRATE (UNII: RS7A450LGA) | | | | |
| WATER (UNII: 059QF0KO0R) | | | | |
| Packaging | | | | |
| # | Item Code | Package Description | Marketing Start Date | Marketing End Date |
| 1 | NDC:81772-007-01 | 1 in 1 CARTON | 03/25/2024 | |
| 1 | | 3.5 mL in 1 BOTTLE, DROPPER; Type 2: Prefilled Drug Delivery Device/System (syringe, patch, etc.) | | |
| Marketing Information | | | | |
| Marketing Category | Application Number or Monograph Citation | Marketing Start Date | Marketing End Date | |
| NDA | NDA218158 | 03/25/2024 | | |

Labeler - Bora Pharmaceuticals Ophthalmic Inc. Taoyuan plant (657636332)

Establishment

| Name | Address | ID/FEI | Business Operations |
|--|---------|-----------|--|
| Bora Pharmaceuticals Ophthalmic Inc. Taoyuan plant | | 657636332 | manufacture(81772-007) , pack(81772-007) |

Establishment

| Name | Address | ID/FEI | Business Operations |
|---|---------|-----------|---------------------|
| Bora Pharmaceuticals Ophthalmic Inc. Taoyuan plant, Research Building | | 657694665 | analysis(81772-007) |

Revised: 10/2024

Bora Pharmaceuticals Ophthalmic Inc. Taoyuan plant