

# **ALPRAZOLAM- alprazolam tablet, extended release**

## **Amneal Pharmaceuticals LLC**

-----

### **HIGHLIGHTS OF PRESCRIBING INFORMATION**

These highlights do not include all the information needed to use **ALPRAZOLAM EXTENDED-RELEASE TABLETS** safely and effectively. See full prescribing information for **ALPRAZOLAM EXTENDED-RELEASE TABLETS**.

**ALPRAZOLAM extended-release tablets, for oral use, CIV**  
Initial U.S. Approval: 1981

#### **WARNING: RISKS FROM CONCOMITANT USE WITH OPIOIDS; ABUSE, MISUSE, AND ADDICTION; and DEPENDENCE AND WITHDRAWAL REACTIONS**

See full prescribing information for complete boxed warning.

- **Concomitant use of benzodiazepines and opioids may result in profound sedation, respiratory depression, coma, and death. Reserve concomitant prescribing of these drugs for use in patients for whom alternative treatment options are inadequate. Limit dosages and durations to the minimum required. Follow patients for signs and symptoms of respiratory depression and sedation. (5.1, 7.1)**
- **The use of benzodiazepines, including alprazolam extended-release tablets, exposes users to risks of abuse, misuse, and addiction, which can lead to overdose or death. Before prescribing alprazolam extended-release tablets and throughout treatment, assess each patient's risk for abuse, misuse, and addiction. (5.2)**
- **Abrupt discontinuation or rapid dosage reduction of alprazolam extended-release tablets after continued use may precipitate acute withdrawal reactions, which can be life-threatening. To reduce the risk of withdrawal reactions, use a gradual taper to discontinue alprazolam extended-release tablets or reduce the dosage. (2.2, 5.3)**

#### **RECENT MAJOR CHANGES**

Warnings and Precautions (5.8)

1/2023

#### **INDICATIONS AND USAGE**

Alprazolam extended-release tablets are a benzodiazepine indicated for the treatment of panic disorder with or without agoraphobia, in adults. (1)

#### **DOSAGE AND ADMINISTRATION**

- Recommended starting oral dosage is 0.5 mg to 1 mg once daily (preferably in the morning). Depending on the response, the dose may be increased at intervals of 3 to 4 days in increments of no more than 1 mg daily. (2.1)
- Recommended total daily dosage is 3 mg to 6 mg daily. (2.1)
- Swallow tablets whole; do not divide, crush, or chew. (2.1)
- When tapering, decrease dosage by no more than 0.5 mg every 3 days. Some patients may require an even slower dosage reduction. (2.2, 5.2)
- See the Full Prescribing Information for the recommended dosage in geriatric patients, patients with hepatic impairment, and with use with ritonavir. (2.3, 2.4, 2.5)

#### **DOSAGE FORMS AND STRENGTHS**

Extended-Release Tablets: 0.5 mg, 1 mg, 2 mg, and 3 mg (3)

#### **CONTRAINDICATIONS**

- Known hypersensitivity to alprazolam or other benzodiazepines. (4)
- Concomitant use with strong cytochrome P450 3A (CYP3A) inhibitors, except ritonavir. (4, 5.5, 7.1)

#### **WARNINGS AND PRECAUTIONS**

- **Effects on Driving and Operating Machinery:** Patients receiving alprazolam extended-release tablets should be cautioned against operating machinery or driving a motor vehicle, as well as avoiding concomitant use of alcohol and other central nervous system (CNS) depressant drugs. (5.4)
- **Patients with Depression:** Exercise caution in patients with signs or symptoms of depression. Prescribe the least number of tablets feasible to avoid intentional overdosage. (5.6)
- **Neonatal Sedation and Withdrawal Syndrome:** Alprazolam extended-release tablets use during

pregnancy can result in neonatal sedation and/or neonatal withdrawal. (5.8, 8.1)

#### ADVERSE REACTIONS

The most common adverse reactions in panic disorder patients treated with alprazolam (incidence of  $\geq$  5% and at least twice that of placebo) include: somnolence, memory impairment, dysarthria, coordination abnormal, ataxia, libido decreased, constipation, and nausea. (6.1)

**To report SUSPECTED ADVERSE REACTIONS, contact Amneal Pharmaceuticals at 1-877-835-5472 or FDA at 1-800-FDA-1088 or [www.fda.gov/medwatch](http://www.fda.gov/medwatch).**

#### DRUG INTERACTIONS

- Use with Opioids: Increase the risk of respiratory depression. (7.1)
- Use with Other CNS Depressants: Produces additive CNS depressant effects. (7.1)
- Use with Digoxin: Increase the risk of digoxin toxicity. (7.1)
- Use with CYP3A Inhibitors (except ritinovir): Increase the risk of adverse reactions of alprazolam. (4, 5.5, 7.1)
- Use with CYP3A Inducers: Increase the risk of reduced efficacy of alprazolam. (7.1)

#### USE IN SPECIFIC POPULATIONS

Lactation: Breastfeeding not recommended. (8.2)

**See 17 for PATIENT COUNSELING INFORMATION and Medication Guide.**

**Revised: 3/2024**

---

## FULL PRESCRIBING INFORMATION: CONTENTS\*

### WARNING: RISKS FROM CONCOMITANT USE WITH OPIOIDS; ABUSE, MISUSE, AND ADDICTION; and DEPENDENCE AND WITHDRAWAL REACTIONS

#### 1 INDICATIONS AND USAGE

#### 2 DOSAGE AND ADMINISTRATION

##### 2.1 Recommended Dosage

##### 2.2 Discontinuation or Dosage Reduction of Alprazolam Extended-Release Tablets

##### 2.3 Dosage Recommendations in Geriatric Patients

##### 2.4 Dosage Recommendations in Patients with Hepatic Impairment

##### 2.5 Dosage Modifications for Drug Interactions

##### 2.6 Switching Patients from Alprazolam Immediate-Release Tablets to Alprazolam Extended-Release Tablets

#### 3 DOSAGE FORMS AND STRENGTHS

#### 4 CONTRAINDICATIONS

#### 5 WARNINGS AND PRECAUTIONS

##### 5.1 Risks from Concomitant Use with Opioids

##### 5.2 Abuse, Misuse, and Addiction

##### 5.3 Dependence and Withdrawal Reactions

##### 5.4 Effects on Driving and Operating Machinery

##### 5.5 Interaction with Drugs that Inhibit Metabolism via Cytochrome P450 3A

##### 5.6 Patients with Depression

##### 5.7 Mania

##### 5.8 Neonatal Sedation and Withdrawal Syndrome

##### 5.9 Risks in Patients with Impaired Respiratory Function

#### 6 ADVERSE REACTIONS

##### 6.1 Clinical Trials Experience

##### 6.2 Post-marketing Experience

#### 7 DRUG INTERACTIONS

##### 7.1 Drugs Having Clinically Important Interactions with Alprazolam Extended-Release

Tablets

7.2 Drug/Laboratory Test Interactions

## **8 USE IN SPECIFIC POPULATIONS**

8.1 Pregnancy

8.2 Lactation

8.4 Pediatric Use

8.5 Geriatric Use

8.6 Hepatic Impairment

## **9 DRUG ABUSE AND DEPENDENCE**

9.1 Controlled Substance

9.2 Abuse

9.3 Dependence

## **10 OVERDOSAGE**

## **11 DESCRIPTION**

## **12 CLINICAL PHARMACOLOGY**

12.1 Mechanism of Action

12.3 Pharmacokinetics

## **13 NONCLINICAL TOXICOLOGY**

13.1 Carcinogenesis, Mutagenesis, Impairment of Fertility

13.2 Animal Toxicology and/or Pharmacology

## **14 CLINICAL STUDIES**

## **16 HOW SUPPLIED/STORAGE AND HANDLING**

## **17 PATIENT COUNSELING INFORMATION**

\* Sections or subsections omitted from the full prescribing information are not listed.

---

## **FULL PRESCRIBING INFORMATION**

**WARNING: RISKS FROM CONCOMITANT USE WITH OPIOIDS; ABUSE, MISUSE, AND ADDICTION; and DEPENDENCE AND WITHDRAWAL REACTIONS**

- **Concomitant use of benzodiazepines and opioids may result in profound sedation, respiratory depression, coma, and death. Reserve concomitant prescribing of these drugs for patients for whom alternative treatment options are inadequate. Limit dosages and durations to the minimum required. Follow patients for signs and symptoms of respiratory depression and sedation [see *Warnings and Precautions (5.1)*, *Drug Interactions (7.1)*].**
- **The use of benzodiazepines, including alprazolam extended-release tablets, exposes users to risks of abuse, misuse, and addiction, which can lead to overdose or death. Abuse and misuse of benzodiazepines commonly involve concomitant use of other medications, alcohol, and/or illicit substances, which is associated with an increased frequency of serious adverse outcomes. Before prescribing alprazolam extended-release tablets and throughout treatment, assess each patient's risk for abuse, misuse, and addiction [see *Warnings and Precautions (5.2)*].**
- **The continued use of benzodiazepines, including alprazolam extended-release tablets, may lead to clinically significant physical dependence. The risks of dependence and withdrawal increase with longer treatment duration and higher daily dose. Abrupt discontinuation or rapid dosage reduction of alprazolam extended-release tablets after continued use may precipitate acute withdrawal reactions, which can be life-threatening. To reduce the risk of withdrawal reactions, use a gradual taper to discontinue alprazolam extended-release tablets or reduce the dosage [see *Dosage and Administration (2.2)*, *Warnings and Precautions (5.3)*].**

## **1 INDICATIONS AND USAGE**

Alprazolam extended-release tablets are indicated for the treatment of panic disorder with or without agoraphobia, in adults.

## **2 DOSAGE AND ADMINISTRATION**

### **2.1 Recommended Dosage**

Administer alprazolam extended-release tablets orally once daily, preferably in the morning. Swallow tablets whole; do not divide, crush, or chew.

The recommended starting oral dosage for alprazolam extended-release tablets is 0.5 mg to 1 mg once daily. Depending on the response, the dosage may be adjusted at intervals of every 3 to 4 days in increments of no more than 1 mg daily. The recommended dosage range is 3 mg to 6 mg once daily.

Controlled trials of alprazolam extended-release tablets for the treatment of panic

disorder included dosages in the range of 1 mg to 10 mg per day. Most patients showed a response in the dosage range of 3 mg to 6 mg per day. Occasional patients required as much as 10 mg per day.

The longer-term efficacy of alprazolam extended-release tablets has not been systematically evaluated. If alprazolam extended-release tablets are used for periods longer than 8 weeks, the healthcare provider should periodically reassess the usefulness of the drug for the individual patient.

After a period of extended freedom from panic attacks, a carefully supervised tapered discontinuation may be attempted, but there is evidence that this may often be difficult to accomplish without recurrence of symptoms and/or the manifestation of withdrawal phenomena [*see Dosage and Administration (2.2), Warnings and Precautions (5.2)*].

## **2.2 Discontinuation or Dosage Reduction of Alprazolam Extended-Release Tablets**

To reduce the risk of withdrawal reactions, use a gradual taper to discontinue alprazolam extended-release tablets or reduce the dosage. If a patient develops withdrawal reactions, consider pausing the taper or increasing the dosage to the previous tapered dosage level. Subsequently decrease the dosage more slowly [*see Warnings and Precautions (5.3), Drug Abuse and Dependence (9.3)*].

Reduce the dosage by no more than 0.5 mg every three days. Some patients may benefit from an even more gradual discontinuation. Some patients may prove resistant to all discontinuation regimens.

In a controlled post-marketing discontinuation study of panic disorder patients which compared the recommended taper schedule with a slower taper schedule, no difference was observed between the groups in the proportion of patients who tapered to zero dose; however, the slower schedule was associated with a reduction in symptoms associated with a withdrawal syndrome.

## **2.3 Dosage Recommendations in Geriatric Patients**

In geriatric patients, the recommended starting dosage of alprazolam extended-release tablets is 0.5 mg once daily. This may be gradually increased if needed and tolerated. Geriatric patients may be sensitive to the effects of benzodiazepines [*see Use in Specific Populations (8.5), Clinical Pharmacology (12.3)*].

## **2.4 Dosage Recommendations in Patients with Hepatic Impairment**

In patients with hepatic impairment, the recommended starting dosage of alprazolam extended-release tablets is 0.5 mg once daily. This may be gradually increased if needed and tolerated [*see Use in Specific Populations (8.6), Clinical Pharmacology (12.3)*].

## **2.5 Dosage Modifications for Drug Interactions**

Alprazolam extended-release tablets should be reduced to half of the recommended dosage when a patient is started on ritonavir and alprazolam extended-release tablets together, or when ritonavir is added to a patient treated with alprazolam extended-release tablets. Increase alprazolam extended-release tablets dosage to the target dose after 10 to 14 days of dosing ritonavir and alprazolam extended-release tablets together. It is not necessary to reduce alprazolam extended-release tablets dosage in

patients who have been taking ritonavir for more than 10 to 14 days.

Alprazolam extended-release tablets are contraindicated with concomitant use of all strong CYP3A inhibitors, except ritonavir [see *Contraindications (4), Warnings and Precautions (5.5), Drug Interactions (7.1)*].

## **2.6 Switching Patients from Alprazolam Immediate-Release Tablets to Alprazolam Extended-Release Tablets**

Patients who are currently being treated with divided doses of alprazolam immediate-release tablets may be switched to alprazolam extended-release tablets at the same total daily dose taken once daily. If the clinical response after switching is inadequate, titrate the dosage as outlined above.

## **3 DOSAGE FORMS AND STRENGTHS**

Alprazolam extended-release tablets, USP are available as:

- 0.5 mg: green, round, biconvex tablets, debossed "IP 9" on one side
- 1 mg: yellow, round, biconvex tablets, debossed "IP 10" on one side
- 2 mg: blue, round, biconvex tablets, debossed "IP 12" on one side
- 3 mg: white, round, biconvex tablets, debossed "IP 13" on one side

## **4 CONTRAINDICATIONS**

Alprazolam extended-release tablets are contraindicated in patients:

- with known hypersensitivity to alprazolam or other benzodiazepines. Angioedema has been reported [see *Adverse Reactions (6.2)*].
- taking strong cytochrome P450 3A (CYP3A) inhibitors (e.g., ketoconazole, itraconazole), except ritonavir [see *Dosage and Administration (2.5), Warnings and Precautions (5.5), Drug Interactions (7.1)*].

## **5 WARNINGS AND PRECAUTIONS**

### **5.1 Risks from Concomitant Use with Opioids**

Concomitant use of benzodiazepines, including alprazolam extended-release tablets, and opioids may result in profound sedation, respiratory depression, coma, and death. Because of these risks, reserve concomitant prescribing of these drugs in patients for whom alternative treatment options are inadequate.

Observational studies have demonstrated that concomitant use of opioid analgesics and benzodiazepines increases the risk of drug-related mortality compared to use of opioids alone. If a decision is made to prescribe alprazolam extended-release tablets concomitantly with opioids, prescribe the lowest effective dosages and minimum durations of concomitant use, and follow patients closely for signs and symptoms of respiratory depression and sedation. In patients already receiving an opioid analgesic, prescribe a lower initial dose of alprazolam extended-release tablets than indicated in the absence of an opioid and titrate based on clinical response. If an opioid is initiated in a patient already taking alprazolam extended-release tablets, prescribe a lower initial dose of the opioid and titrate based upon clinical response.

Advise both patients and caregivers about the risks of respiratory depression and sedation when alprazolam extended-release tablets is used with opioids. Advise patients not to drive or operate heavy machinery until the effects of concomitant use with the opioid have been determined [see *Drug Interactions (7.1)*].

## **5.2 Abuse, Misuse, and Addiction**

The use of benzodiazepines, including alprazolam extended-release tablets, exposes users to the risks of abuse, misuse, and addiction, which can lead to overdose or death. Abuse and misuse of benzodiazepines often (but not always) involve the use of doses greater than the maximum recommended dosage and commonly involve concomitant use of other medications, alcohol, and/or illicit substances, which is associated with an increased frequency of serious adverse outcomes, including respiratory depression, overdose, or death [see *Drug Abuse and Dependence (9.2)*].

Before prescribing alprazolam extended-release tablets and throughout treatment, assess each patient's risk for abuse, misuse, and addiction (e.g., using a standardized screening tool). Use of alprazolam extended-release tablets, particularly in patients at elevated risk, necessitates counseling about the risks and proper use of alprazolam extended-release tablets along with monitoring for signs and symptoms of abuse, misuse, and addiction. Prescribe the lowest effective dosage; avoid or minimize concomitant use of CNS depressants and other substances associated with abuse, misuse, and addiction (e.g., opioid analgesics, stimulants); and advise patients on the proper disposal of unused drug. If a substance use disorder is suspected, evaluate the patient and institute (or refer them for) early treatment, as appropriate.

## **5.3 Dependence and Withdrawal Reactions**

To reduce the risk of withdrawal reactions, use a gradual taper to discontinue alprazolam extended-release tablets or reduce the dosage (a patient-specific plan should be used to taper the dose) [see *Dosage and Administration (2.3)*].

Patients at an increased risk of withdrawal adverse reactions after benzodiazepine discontinuation or rapid dosage reduction include those who take higher dosages, and those who have had longer durations of use.

### Acute Withdrawal Reactions

The continued use of benzodiazepines, including alprazolam extended-release tablets, may lead to clinically significant physical dependence. Abrupt discontinuation or rapid dosage reduction of alprazolam extended-release tablets after continued use, or administration of flumazenil (a benzodiazepine antagonist) may precipitate acute withdrawal reactions, which can be life-threatening (e.g., seizures) [see *Drug Abuse and Dependence (9.3)*].

### Protracted Withdrawal Syndrome

In some cases, benzodiazepine users have developed a protracted withdrawal syndrome with withdrawal symptoms lasting weeks to more than 12 months [see *Drug Abuse and Dependence (9.3)*].

Certain adverse clinical events, some life-threatening, are a direct consequence of physical dependence to alprazolam extended-release tablets. These include a spectrum of withdrawal symptoms; the most important is seizure [see *Drug Abuse and*

*Dependence (9.3)]*. Even after relatively short-term use at doses of  $\leq 4$  mg/day, there is some risk of dependence. Spontaneous reporting system data suggest that the risk of dependence and its severity appear to be greater in patients treated with doses greater than 4 mg/day and for long periods (more than 12 weeks). However, in a controlled post-marketing discontinuation study of panic disorder patients who received alprazolam immediate-release tablets, the duration of treatment (3 months compared to 6 months) had no effect on the ability of patients to taper to zero dose. In contrast, patients treated with doses of alprazolam immediate-release tablets greater than 4 mg/day had more difficulty tapering to zero dose than those treated with less than 4 mg/day.

In a controlled clinical trial in which 63 patients were randomized to alprazolam immediate-release tablets and where withdrawal symptoms were specifically sought, the following were identified as symptoms of withdrawal: heightened sensory perception, impaired concentration, dysosmia, clouded sensorium, paresthesias, muscle cramps, muscle twitch, diarrhea, blurred vision, appetite decrease, and weight loss. Other symptoms, such as anxiety and insomnia, were frequently seen during discontinuation, but it could not be determined if they were due to return of illness, rebound, or withdrawal.

#### Interdose Symptoms

Early morning anxiety and emergence of anxiety symptoms between doses of alprazolam immediate-release tablets have been reported in patients with panic disorder taking prescribed maintenance doses. These symptoms may reflect the development of tolerance or a time interval between doses which is longer than the duration of clinical action of the administered dose. In either case, it is presumed that the prescribed dose is not sufficient to maintain plasma levels above those needed to prevent relapse, rebound, or withdrawal symptoms over the entire course of the interdosing interval.

#### **5.4 Effects on Driving and Operating Machinery**

Because of its CNS depressant effects, patients receiving alprazolam extended-release tablets should be cautioned against engaging in hazardous occupations or activities requiring complete mental alertness such as operating machinery or driving a motor vehicle. For the same reason, patients should be cautioned about the concomitant use of alcohol and other CNS depressant drugs during treatment with alprazolam extended-release tablets [*see Drug Interactions (7.1)]*.

#### **5.5 Interaction with Drugs that Inhibit Metabolism via Cytochrome P450 3A**

The initial step in alprazolam metabolism is hydroxylation catalyzed by cytochrome P450 3A (CYP3A). Drugs that inhibit this metabolic pathway may have a profound effect on the clearance of alprazolam.

##### Strong CYP3A Inhibitors

Alprazolam extended-release tablets are contraindicated in patients receiving strong inhibitors of CYP3A such as azole antifungal agents [*see Contraindications (4)]*. Ketoconazole and itraconazole have been shown *in vivo* to increase plasma alprazolam concentrations 3.98 fold and 2.70 fold, respectively.

Dosage adjustment is necessary when alprazolam extended-release tablets and ritonavir are initiated concomitantly or when ritonavir is added to a stable dosage of



alprazolam extended-release tablets [see *Dosage and Administration (2.5)*, *Drug Interactions (7.1)*].

Drugs demonstrated to be CYP3A inhibitors on the basis of clinical studies involving alprazolam: nefazodone, fluvoxamine, and cimetidine [see *Drug Interaction (7.1)*, *Clinical Pharmacology (12.3)*]. Use caution and consider dose reduction of alprazolam extended-release tablets, as appropriate, during co-administration with these drugs.

## **5.6 Patients with Depression**

Benzodiazepines may worsen depression. Panic disorder has been associated with primary and secondary major depressive disorders and increased reports of suicide among untreated patients. Consequently, appropriate precautions (e.g., limiting the total prescription size and increased monitoring for suicidal ideation) should be considered in patients with depression.

## **5.7 Mania**

Episodes of hypomania and mania have been reported in association with the use of alprazolam extended-release tablets in patients with depression [see *Adverse Reactions (6.1)*].

## **5.8 Neonatal Sedation and Withdrawal Syndrome**

Use of alprazolam extended-release tablets late in pregnancy can result in sedation (respiratory depression, lethargy, hypotonia) and/or withdrawal symptoms (hyperreflexia, irritability, restlessness, tremors, inconsolable crying, and feeding difficulties) in the neonate [see *Use in Specific Populations (8.1)*]. Monitor neonates exposed to alprazolam extended-release tablets during pregnancy or labor for signs of sedation and monitor neonates exposed to alprazolam extended-release tablets during pregnancy for signs of withdrawal; manage these neonates accordingly.

## **5.9 Risks in Patients with Impaired Respiratory Function**

There have been reports of death in patients with severe pulmonary disease shortly after the initiation of treatment with alprazolam. Closely monitor patients with impaired respiratory function. If signs and symptoms of respiratory depression, hypoventilation, or apnea occur, discontinue alprazolam extended-release tablets.

## **6 ADVERSE REACTIONS**

The following clinically significant adverse reactions are described elsewhere in the labeling:

- Risks from Concomitant Use with Opioids [see *Warnings and Precautions (5.1)*]
- Abuse, Misuse, and Addiction [see *Warnings and Precautions (5.2)*]
- Dependence and Withdrawal Reactions [see *Warnings and Precautions (5.3)*]
- Effects on Driving and Operating Machinery [see *Warnings and Precautions (5.4)*]
- Patients with Depression [see *Warnings and Precautions (5.6)*]
- Neonatal Sedation and Withdrawal Syndrome [see *Warnings and Precautions (5.8)*]
- Risks in Patients with Impaired Respiratory Function [see *Warnings and Precautions (5.9)*]

## 6.1 Clinical Trials Experience

Because clinical trials are conducted under widely varying conditions, adverse reaction rates observed in the clinical trials of a drug cannot be directly compared to rates in the clinical trials of another drug and may not reflect the rates observed in practice.

The information included in the section on Adverse Reactions Observed in Short-Term, Placebo-Controlled Trials with alprazolam extended-release tablets is based on pooled data of five 6- and 8-week placebo-controlled clinical studies in panic disorder.

### Adverse Reactions Observed in Short-Term, Placebo-Controlled Trials of Alprazolam Extended-Release Tablets

*Adverse Reactions Reported as Reasons for Discontinuation of Treatment in Placebo-Controlled Trials* Approximately 17% of the 531 patients who received alprazolam extended-release tablets in placebo-controlled clinical trials for panic disorder had at least 1 adverse event that led to discontinuation compared to 8% of 349 placebo-treated patients. The most common events leading to discontinuation and considered to be drug-related (i.e., leading to discontinuation in at least 1% of the patients treated with alprazolam extended-release tablets at a rate at least twice that of placebo) are shown in Table 1.

**Table 1: Adverse Reactions Leading to Discontinuation in  $\geq 1\%$  of Alprazolam Extended-Release Tablets-treated Patients and at least twice the Rate of Placebo-treated Patients in Placebo-Controlled Trials**

	Percentage of Patients Discontinuing Due to Adverse Reactions	
	Alprazolam Extended-Release Tablets (n=531)	Placebo (n=349)
<b>Nervous system disorders</b>	7.5	0.6
Sedation	3.2	0.3
Somnolence	2.1	0
Dysarthria	1.9	0.3
Coordination abnormal	1.5	0.3
Memory impairment		
<b>General disorders/administration site conditions</b>	1.7	0.6
Fatigue		
<b>Psychiatric disorders</b>	2.5	1.2
Depression		
n=number of patients		

### *Adverse Reactions Occurring at an Incidence of 1% or More Among Patients Treated with Alprazolam Extended-Release Tablet*

Table 2 shows the incidence of adverse reactions that occurred during 6- and 8-week placebo-controlled trials in 1% or more of patients treated with alprazolam extended-release tablets where the incidence in patients treated with alprazolam extended-release

tablets was greater than the incidence in placebo-treated patients. The most commonly observed adverse reactions in panic disorder patients treated with alprazolam extended-release tablets (incidence of 5% or greater and at least twice the incidence in placebo patients) were: sedation, somnolence, memory impairment, dysarthria, coordination abnormal, ataxia, libido decreased.

**Table 2: Adverse Reactions Occuring in  $\geq$  1% in Alprazolam-treated Patients and Greater than Placebo-treated Patients in 6 and 8 week Placebo-Controlled Trials Panic Disorder**

	<b>Alprazolam Extended-Release Tablets (n=531)</b>	<b>Placebo (n=349)</b>
<b>Nervous system disorders</b>	45%	23%
Sedation	23%	6%
Somnolence	15%	7%
Memory impairment	11%	3%
Dysarthria	9%	1%
Coordination abnormal	7%	6%
Mental impairment	7%	3%
Ataxia	3%	1%
Disturbance in attention	3%	1%
Balance impaired	2%	1%
Dyskinesia	1%	< 1%
Hypoesthesia	1%	0%
Hypersomnia		
<b>General disorders/administration site conditions</b>	14%	9%
Fatigue	2%	1%
Lethargy		
<b>Psychiatric disorders</b>	12%	9%
Depression	6%	2%
Libido decreased	2%	0%
Disorientation	2%	1%
Confusion	1%	< 1%
Depressed mood		
<b>Metabolism and nutrition disorders</b>	7%	6%
Appetite increased	2%	0%
Anorexia		
<b>Gastrointestinal disorders</b>	8%	4%
Constipation	6%	3%
Nausea		
<b>Investigations</b>	5	4
Weight increased		
<b>Injury, poisoning, and procedural complications</b>	2%	0%
Road traffic accident		
<b>Reproductive system and breast disorders</b>	4%	3%

Dysmenorrhea	2%	1%
Sexual dysfunction		
<b>Musculoskeletal and connective tissue disorder</b>	2%	1%
Arthralgia	2%	1%
Myalgia	1%	0%
Pain in limb		
<b>Respiratory, thoracic, and mediastinal disorders</b>	2%	0%
Dyspnea		

Other Adverse Reactions Observed During the Premarketing Evaluation of Alprazolam Extended-Release Tablets

Following is a list of other adverse reaction reported by 531 patients with panic disorder treated with alprazolam extended-release tablets. Adverse reactions are further categorized by body system and listed in order of decreasing frequency according to the following definitions: those occurring in at least 1/100 patients (frequent); those occurring in less than 1/100 patients but at least 1/1,000 patients (infrequent); those occurring in fewer than 1/1,000 patients (rare).

**Cardiac disorders:** *Frequent:* palpitation; *Infrequent:* sinus tachycardia

**Ear and Labyrinth disorders:** *Frequent:* Vertigo; *Infrequent:* tinnitus, ear pain

**Eye disorders:** *Frequent:* blurred vision; *Infrequent:* mydriasis, photophobia

**Gastrointestinal disorders:** *Frequent:* diarrhea, vomiting, dyspepsia, abdominal pain; *Infrequent:* dysphagia, salivary hypersecretion

**General disorders and administration site conditions:** *Frequent:* malaise, weakness, chest pains; *Infrequent:* fall, pyrexia, thirst, feeling hot and cold, edema, feeling jittery, sluggishness, asthenia, feeling drunk, chest tightness, increased energy, feeling of relaxation, hangover, loss of control of legs, rigors

**Musculoskeletal and connective tissue disorders:** *Frequent:* back pain, muscle cramps, muscle twitching

**Nervous system disorders:** *Frequent:* headache, dizziness, tremor; *Infrequent:* amnesia, clumsiness, syncope, hypotonia, seizures, depressed level of consciousness, sleep apnea syndrome, sleep talking, stupor

**Psychiatric system disorders:** *Frequent:* irritability, insomnia, nervousness, derealization, libido increased, restlessness, agitation, depersonalization, nightmare; *Infrequent:* abnormal dreams, apathy, aggression, anger, bradyphrenia, euphoric mood, logorrhea, mood swings, dysphonia, hallucination, homicidal ideation, mania, hypomania, impulse control, psychomotor retardation, suicidal ideation

**Renal and urinary disorders:** *Frequent:* difficulty in micturition; *Infrequent:* urinary frequency, urinary incontinence

**Respiratory, thoracic, and mediastinal disorders:** *Frequent:* nasal congestion, hyperventilation; *Infrequent:* choking sensation, epistaxis, rhinorrhea

**Skin and subcutaneous tissue disorders:** *Frequent:* sweating increased;

*Infrequent:* clamminess, rash, urticaria

**Vascular disorders:** *Infrequent:* hypotension

Discontinuation-Emergent Adverse Reactions Occurring at an Incidence of 5% or More Among Patients Treated with Alprazolam Extended-Release Tablets

Table 3 shows the incidence of discontinuation-emergent adverse reactions that occurred during short-term, placebo-controlled trials in 5% or more of patients treated with alprazolam extended-release tablets where the incidence in patients treated with alprazolam extended-release tablets was 2 times greater than the incidence in placebo-treated patients.

**Table 3: Discontinuation-Emergent Symptom Incidence Reported in  $\geq 5\%$  of Alprazolam Extended-Release Tablets-treated Patients and at least twice the Rate of Placebo-treated Patients in Short-Term, Placebo-Controlled Trials**

	<b>Alprazolam Extended-Release Tablets n=422 (%)</b>	<b>Placebo n=261(%)</b>
<b>Nervous system disorders</b>	28.2	10.7
Tremor	26.5	12.6
Headache	7.8	2.3
Hypoesthesia	7.1	2.7
Paraesthesia		
<b>Psychiatric disorders</b>	24.2	9.6
Insomnia	21.8	8.8
Nervousness	10.9	5.0
Depression	8.0	3.8
Derealization	7.8	2.7
Anxiety	5.7	1.9
Depersonalization		
<b>Gastrointestinal disorders</b>	12.1	3.1
Diarrhea		
<b>Respiratory, thoracic and mediastinal disorders</b>	8.5	2.7
Hyperventilation		
<b>Metabolism and nutrition disorders</b>	9.5	3.8
Appetite decreased		
<b>Musculoskeletal and connective tissue disorders</b>	7.4	2.7
Muscle twitching		
<b>Vascular disorders</b>	5.9	2.7
Hot flushes		

There have also been reports of withdrawal seizures upon rapid decrease or abrupt discontinuation of alprazolam [see *Warning and Precautions (5.2)*, *Drug Abuse and Dependence (9.3)*].

Paradoxical reactions such as stimulation, increased muscle spasticity, sleep disturbances, hallucinations, and other adverse behavioral effects such as agitation, rage, irritability, and aggressive or hostile behavior have been reported rarely. In many of the spontaneous case reports of adverse behavioral effects, patients were receiving other CNS drugs concomitantly and/or were described as having underlying psychiatric conditions. Should any of the above events occur, alprazolam should be discontinued. Isolated published reports involving small numbers of patients have suggested that patients who have borderline personality disorder, a prior history of violent or aggressive behavior, or alcohol or substance abuse may be at risk for such events. Instances of irritability, hostility, and intrusive thoughts have been reported during discontinuation of alprazolam in patients with posttraumatic stress disorder.

## 6.2 Post-marketing Experience

The following adverse reactions have been identified during post-approval use of alprazolam immediate-release tablets and/or alprazolam extended-release tablets. Because these reactions are reported voluntarily from a population of uncertain size, it is not always possible to reliably estimate their frequency or establish a causal relationship to drug exposure.

*Endocrine disorders:* Hyperprolactinemia

*General disorders and administration site conditions:* Edema peripheral

*Hepatobiliary disorders:* Hepatitis, hepatic failure, jaundice

*Investigations:* Liver enzyme elevations

*Psychiatric disorders:* Hypomania, mania

*Reproductive system and breast disorders:* Gynecomastia, galactorrhea, menstruation irregular

*Skin and subcutaneous tissue disorders:* Photosensitivity reaction, angioedema, Stevens-Johnson syndrome

## 7 DRUG INTERACTIONS

### 7.1 Drugs Having Clinically Important Interactions with Alprazolam Extended-Release Tablets

Table 4 includes clinically significant drug interactions with alprazolam extended-release tablets [see *Clinical Pharmacology (12.3)*].

**Table 4: Clinically Significant Drug Interactions with Alprazolam Extended-Release Tablets**

Opioids	
Clinical implication	The concomitant use of benzodiazepines and opioids increases the risk of respiratory depression because of actions at different receptor sites in the CNS that control respiration. Benzodiazepines interact at gamma-aminobutyric acid (GABAA) sites and opioids interact primarily at mu receptors. When benzodiazepines and opioids are combined, the potential

	for benzodiazepines to significantly worsen opioid-related respiratory depression exists.
Prevention or management	Limit dosage and duration of concomitant use of alprazolam extended-release tablets and opioids, and monitor patients closely for respiratory depression and sedation [see <i>Warnings and Precautions (5.1)</i> ].
Examples	Morphine, buprenorphine, hydromorphone, oxycodone, oxycodone, fentanyl, methadone, alfentanil, butorpenol, codeine, dihydrocodeine, meperidine, pentazocine, remifentanil, sufentanil, tapentadol, tramadol.
<b>CNS Depressants</b>	
Clinical implication	The benzodiazepines, including alprazolam, produce additive CNS depressant effects when co-administered with other CNS depressants.
Prevention or management	Limit dosage and duration of alprazolam extended-release tablets during concomitant use with CNS depressants [see <i>Warnings and Precautions (5.3)</i> ].
Examples	Psychotropic medications, anticonvulsants, antihistaminics, ethanol, and other drugs which themselves produce CNS depression.
<b>Strong Inhibitors of CYP3A (except ritonavir)</b>	
Clinical implication	Concomitant use of alprazolam extended-release tablets with strong CYP3A inhibitors has a profound effect on the clearance of alprazolam, resulting in increased concentrations of alprazolam and increased risk of adverse reactions [see <i>Clinical Pharmacology (12.3)</i> ].
Prevention or management	Concomitant use of alprazolam extended-release tablets with a strong CYP3A4 inhibitor (except ritonavir) is contraindicated [see <i>Contraindications (4), Warnings and Precautions (5.5)</i> ].
Examples	Ketoconazole, itraconazole, clarithromycin
<b>Moderate or Weak Inhibitors of CYP3A</b>	
Clinical implication	Concomitant use of alprazolam extended-release tablets with CYP3A inhibitors may increase the concentrations of alprazolam extended-release tablets, resulting in increased risk of adverse reactions [see <i>Clinical Pharmacology (12.3)</i> ].
Prevention or management	Avoid use and consider appropriate dose reduction when alprazolam extended-release tablets is co-administered with a moderate or weak CYP3A inhibitor [see <i>Warnings and Precautions (5.5)</i> ].
Examples	Nefazodone, fluvoxamine, cimetidine, erythromycin
<b>CYP3A Inducers</b>	
Clinical implication	Concomitant use of CYP3A inducers can increase alprazolam metabolism and therefore can decrease plasma levels of alprazolam [see <i>Clinical Pharmacology (12.3)</i> ].
Prevention or management	Caution is recommended during co-administration with alprazolam.
Examples	Carbamazepine, phenytoin
<b>Ritonavir</b>	
Clinical implication	Interactions involving ritonavir and alprazolam are complex and time dependent. Short term administration of ritonavir increased alprazolam exposure due to CYP3A4 inhibition. Following long term treatment of ritonavir (> 10 - 14 days), CYP3A4 induction offsets this inhibition. Alprazolam exposure was not meaningfully affected in the presence of ritonavir.

Prevention or management	Reduce alprazolam extended-release tablets dose when a patient is initiated with ritonavir and alprazolam extended-release tablets concomitantly, or when ritonavir is added to a regimen where alprazolam extended-release tablets are stabilized. Increase alprazolam extended-release tablets dosage to the target dosage after 10 to 14 days of dosing ritonavir and alprazolam extended-release tablets concomitantly. No dosage adjustment of alprazolam extended-release tablets is necessary in patients receiving ritonavir for more than 10 to 14 days [see <i>Dosage and Administration (2.5)</i> ]. Concomitant use of alprazolam extended-release tablets with a strong CYP3A inhibitor, except ritonavir, is contraindicated [see <i>Contraindications (4), Warnings and Precautions (5.5)</i> ].
<b>Digoxin</b>	
Clinical implication	Increased digoxin concentrations have been reported when alprazolam was given, especially in geriatric patients (> 65 years of age).
Prevention or management	In patients on digoxin therapy, measure serum digoxin concentrations before initiating alprazolam extended-release tablets. Continue monitoring digoxin serum concentration and toxicity frequently. Reduce the digoxin dose if necessary.

## 7.2 Drug/Laboratory Test Interactions

Although interactions between benzodiazepines and commonly employed clinical laboratory tests have occasionally been reported, there is no consistent pattern for a specific drug or specific test.

## 8 USE IN SPECIFIC POPULATIONS

### 8.1 Pregnancy

#### Pregnancy Exposure Registry

There is a pregnancy exposure registry that monitors pregnancy outcomes in women exposed to psychiatric medications, including alprazolam extended-release tablets during pregnancy. Healthcare providers are encouraged to register patients by calling the National Pregnancy Registry for Psychiatric Medications at 1-866-961-2388 or visiting online at <https://womensmentalhealth.org/pregnancyregistry/>.

#### Risk Summary

Neonates born to mothers using benzodiazepines late in pregnancy have been reported to experience symptoms of sedation and/or neonatal withdrawal [see *Warnings and Precautions (5.8)*, and *Clinical Considerations*]. Available data from published observational studies of pregnant women exposed to benzodiazepines do not report a clear association with benzodiazepines and major birth defects (see *Data*).

The background risk of major birth defects and miscarriage for the indicated population is unknown. All pregnancies have a background risk of birth defect, loss, or other adverse outcomes. In the U.S. general population, the estimated risk of major birth defects and of miscarriage in clinically recognized pregnancies is 2% to 4% and 15% to 20%, respectively.



## Clinical Considerations

### *Fetal/Neonatal adverse reactions*

Benzodiazepines cross the placenta and may produce respiratory depression, hypotonia, and sedation in neonates. Monitor neonates exposed to alprazolam extended-release tablets during pregnancy or labor for signs of sedation, respiratory depression, hypotonia, and feeding problems. Monitor neonates exposed to alprazolam extended-release tablets during pregnancy for signs of withdrawal. Manage these neonates accordingly [see *Warnings and Precautions (5.8)*].

## Data

### *Human Data*

Published data from observational studies on the use of benzodiazepines during pregnancy do not report a clear association with benzodiazepines and major birth defects. Although early studies reported an increased risk of congenital malformations with diazepam and chlordiazepoxide, there was no consistent pattern noted. In addition, the majority of recent case-control and cohort studies of benzodiazepine use during pregnancy, which were adjusted for confounding exposures to alcohol, tobacco, and other medications, have not confirmed these findings.

## **8.2 Lactation**

### Risk Summary

Limited data from published literature reports the presence of alprazolam in human breast milk. There are reports of sedation, poor feeding and poor weight gain in infants exposed to benzodiazepines through breast milk. The effects of alprazolam on lactation are unknown.

Because of the potential for serious adverse reactions, including sedation and withdrawal symptoms in breastfed infants, advise patients that breastfeeding is not recommended during treatment with alprazolam extended-release tablets.

## **8.4 Pediatric Use**

Safety and effectiveness of alprazolam extended-release tablets have not been established in pediatric patients.

## **8.5 Geriatric Use**

Alprazolam extended-release tablets-treated geriatric patients had higher plasma concentrations of alprazolam (due to reduced clearance) compared to younger adults receiving the same doses. Therefore, dosage reduction of alprazolam extended-release tablets is recommended in geriatric patients [see *Dosage and Administration (2.3)* and *Clinical Pharmacology (12.3)*].

## **8.6 Hepatic Impairment**

Patients with alcoholic liver disease exhibit a longer elimination half-life (19.7 hours), compared to healthy subjects (11.4 hours). This may be caused by decreased clearance of alprazolam extended-release tablets in patients with alcoholic liver disease. Dosage reduction of alprazolam is recommended in patients with hepatic impairment [see

*Dosage and Administration (2.4), Clinical Pharmacology (12.3)].*

## **9 DRUG ABUSE AND DEPENDENCE**

### **9.1 Controlled Substance**

Alprazolam extended-release tablets contains alprazolam, which is a Schedule IV controlled substance.

### **9.2 Abuse**

Alprazolam extended-release tablets are benzodiazepine and a CNS depressant with a potential for abuse and addiction. Abuse is the intentional, non-therapeutic use of a drug, even once, for its desirable psychological or physiological effects. Misuse is the intentional use, for therapeutic purposes, of a drug by an individual in a way other than prescribed by a health care provider or for whom it was not prescribed. Drug addiction is a cluster of behavioral, cognitive, and physiological phenomena that may include a strong desire to take the drug, difficulties in controlling drug use (e.g., continuing drug use despite harmful consequences, giving a higher priority to drug use than other activities and obligations), and possible tolerance or physical dependence. Even taking benzodiazepines as prescribed may put patients at risk for abuse and misuse of their medication. Abuse and misuse of benzodiazepines may lead to addiction.

Abuse and misuse of benzodiazepines often (but not always) involve the use of doses greater than the maximum recommended dosage and commonly involve concomitant use of other medications, alcohol, and/or illicit substances, which is associated with an increased frequency of serious adverse outcomes, including respiratory depression, overdose, or death. Benzodiazepines are often sought by individuals who abuse drugs and other substances, and by individuals with addictive disorders [*see Warnings and Precautions (5.2)*].

The following adverse reactions have occurred with benzodiazepine abuse and/or misuse: abdominal pain, amnesia, anorexia, anxiety, aggression, ataxia, blurred vision, confusion, depression, disinhibition, disorientation, dizziness, euphoria, impaired concentration and memory, indigestion, irritability, muscle pain, slurred speech, tremors, and vertigo.

The following severe adverse reactions have occurred with benzodiazepine abuse and/or misuse: delirium, paranoia, suicidal ideation and behavior, seizures, coma, breathing difficulty, and death. Death is more often associated with polysubstance use (especially benzodiazepines with other CNS depressants such as opioids and alcohol).

### **9.3 Dependence**

#### Physical Dependence

Alprazolam extended-release tablets may produce physical dependence from continued therapy. Physical dependence is a state that develops as a result of physiological adaptation in response to repeated drug use, manifested by withdrawal signs and symptoms after abrupt discontinuation or a significant dose reduction of a drug. Abrupt discontinuation or rapid dosage reduction of benzodiazepines or administration of flumazenil, a benzodiazepine antagonist, may precipitate acute withdrawal reactions,

including seizures, which can be life-threatening. Patients at an increased risk of withdrawal adverse reactions after benzodiazepine discontinuation or rapid dosage reduction include those who take higher dosages (i.e., higher and/or more frequent doses) and those who have had longer durations of use [see *Warnings and Precautions (5.3)*].

To reduce the risk of withdrawal reactions, use a gradual taper to discontinue alprazolam extended-release tablets or reduce the dosage [see *Dosage and Administration (2.3)*, *Warnings and Precautions (5.3)*].

#### *Acute Withdrawal Signs and Symptoms*

Acute withdrawal signs and symptoms associated with benzodiazepines have included abnormal involuntary movements, anxiety, blurred vision, depersonalization, depression, derealization, dizziness, fatigue, gastrointestinal adverse reactions (e.g., nausea, vomiting, diarrhea, weight loss, decreased appetite), headache, hyperacusis, hypertension, irritability, insomnia, memory impairment, muscle pain and stiffness, panic attacks, photophobia, restlessness, tachycardia, and tremor. More severe acute withdrawal signs and symptoms, including life-threatening reactions, have included catatonia, convulsions, delirium tremens, depression, hallucinations, mania, psychosis, seizures, and suicidality.

#### *Protracted Withdrawal Syndrome*

Protracted withdrawal syndrome associated with benzodiazepines is characterized by anxiety, cognitive impairment, depression, insomnia, formication, motor symptoms (e.g., weakness, tremor, muscle twitches), paresthesia, and tinnitus that persists beyond 4 to 6 weeks after initial benzodiazepine withdrawal. Protracted withdrawal symptoms may last weeks to more than 12 months. As a result, there may be difficulty in differentiating withdrawal symptoms from potential re-emergence or continuation of symptoms for which the benzodiazepine was being used.

#### Tolerance

Tolerance to alprazolam extended-release tablets may develop from continued therapy. Tolerance is a physiological state characterized by a reduced response to a drug after repeated administration (i.e., a higher dose of a drug is required to produce the same effect that was once obtained at a lower dose). Tolerance to the therapeutic effect of alprazolam extended-release tablets may develop; however, little tolerance develops to the amnestic reactions and other cognitive impairments caused by benzodiazepines.

## **10 OVERDOSAGE**

Overdosage of benzodiazepines is characterized by central nervous system depression ranging from drowsiness to coma. In mild to moderate cases, symptoms can include drowsiness, confusion, dysarthria, lethargy, hypnotic state, diminished reflexes, ataxia, and hypotonia. Rarely, paradoxical or disinhibitory reactions (including agitation, irritability, impulsivity, violent behavior, confusion, restlessness, excitement, and talkativeness) may occur. In severe overdosage cases, patients may develop respiratory depression and coma. Overdosage of benzodiazepines in combination with other CNS depressants (including alcohol and opioids) may be fatal [see *Warnings and Precautions (5.2)*]. Markedly abnormal (lowered or elevated) blood pressure, heart rate, or respiratory rate raise the concern that additional drugs and/or alcohol are involved in the

overdosage.

In managing benzodiazepine overdosage, employ general supportive measures, including intravenous fluids and airway management. Flumazenil, a specific benzodiazepine receptor antagonist indicated for the complete or partial reversal of the sedative effects of benzodiazepines in the management of benzodiazepine overdosage, can lead to withdrawal and adverse reactions, including seizures, particularly in the context of mixed overdosage with drugs that increase seizure risk (e.g., tricyclic and tetracyclic antidepressants) and in patients with long-term benzodiazepine use and physical dependency. The risk of withdrawal seizures with flumazenil use may be increased in patients with epilepsy. Flumazenil is contraindicated in patients who have received a benzodiazepine for control of a potentially life-threatening condition (e.g., status epilepticus). If the decision is made to use flumazenil, it should be used as an adjunct to, not as a substitute for, supportive management of benzodiazepine overdosage. See the flumazenil injection Prescribing Information.

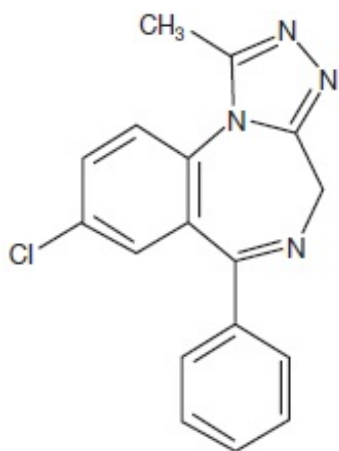
Consider contacting the Poison Help Line at (1-800-222-1222), or a medical toxicologist for additional overdosage management recommendations.

## 11 DESCRIPTION

Alprazolam extended-release tablets, USP contains alprazolam, USP which is a triazolo analog of the 1,4 benzodiazepine class of central nervous system-active compounds.

The chemical name of alprazolam, USP is 8-chloro-1-methyl-6-phenyl-4*H*-s-triazolo [4,3- $\alpha$ ] [1,4] benzodiazepine. The molecular formula is  $C_{17}H_{13}ClN_4$  which corresponds to a molecular weight of 308.76.

The structural formula is represented below:



Alprazolam, USP is a white crystalline powder, which is soluble in methanol or ethanol but which has no appreciable solubility in water at physiological pH.

Each alprazolam extended-release tablet, USP for oral administration, contains 0.5 mg, 1 mg, 2 mg, or 3 mg of alprazolam, USP. The inactive ingredients are lactose monohydrate, hypromellose, calcium silicate and magnesium stearate. In addition, the 0.5 mg tablet contains FD&C Blue #2 and D&C Yellow #10. The 1 mg tablet contains D&C Yellow #10. The 2 mg tablet contains FD&C Blue #2.

Meets USP Dissolution Test 5.

## **12 CLINICAL PHARMACOLOGY**

### **12.1 Mechanism of Action**

Alprazolam is a 1,4 benzodiazepine. Alprazolam exerts its effect for the treatment of panic disorder through binding to the benzodiazepine site of gamma-aminobutyric acid-A (GABA<sub>A</sub>) receptors in the brain and enhances GABA-mediated synaptic inhibition.

### **12.3 Pharmacokinetics**

The pharmacokinetics of alprazolam and two of its major active metabolites (4-hydroxyalprazolam and  $\alpha$ -hydroxyalprazolam) are linear, and concentrations are proportional up to 10 mg alprazolam extended-release tablets given once daily.

#### Absorption

Following oral administration of alprazolam extended-release tablets in the morning, peak plasma concentration of alprazolam ( $C_{max}$ ) occurs in about 10 hours postdose. Compared to morning dosing, alprazolam  $C_{max}$  increased by 30% and the  $T_{max}$  decreased by an hour following dosing at night.

The mean absolute bioavailability of alprazolam following administration of alprazolam extended-release tablet is approximately 90%, and the relative bioavailability compared to alprazolam immediate-release tablet is about 100%. The bioavailability and pharmacokinetics of alprazolam following administration of alprazolam extended-release tablets are similar to that for alprazolam immediate-release tablets, with the exception of a slower rate of absorption.

#### *Effect of Food*

A high-fat meal given up to 2 hours before dosing with alprazolam extended-release tablets increased the mean  $C_{max}$  by about 25%. The effect of this meal on  $T_{max}$  depended on the timing of the meal, with a reduction in  $T_{max}$  by about 1/3 for subjects eating immediately before dosing and an increase in  $T_{max}$  by about 1/3 for subjects eating 1 hour or more after dosing. The extent of exposure (AUC) and elimination half-life ( $t_{1/2}$ ) were not affected by eating.

#### Distribution

The apparent volume of distribution of alprazolam is similar for alprazolam extended-release tablets and alprazolam immediate-release tablets. Alprazolam is 80% bound to human serum protein, and albumin accounts for the majority of the binding.

#### Elimination

The mean plasma elimination half-life of alprazolam following administration of alprazolam extended-release tablets ranges from 10.7 to 15.8 hours in healthy adults.

#### *Metabolism*

Alprazolam is extensively metabolized in humans, primarily by cytochrome P450 3A4 (CYP3A4), to two major active metabolites in the plasma: 4-hydroxyalprazolam and  $\alpha$ -hydroxyalprazolam. The plasma circulation levels of the two active metabolites after both

alprazolam extended-release tablets and alprazolam immediate-release tablets are less than 10% and 4% of the parent, respectively. The reported relative potencies in benzodiazepine receptor binding experiments and in animal models of induced seizure inhibition are 0.20 and 0.66, respectively, for 4-hydroxyalprazolam and  $\alpha$ -hydroxyalprazolam. The low concentrations and low potencies of 4-hydroxyalprazolam and  $\alpha$ -hydroxyalprazolam indicate that they unlikely contribute much to the effects of alprazolam. A benzophenone derived from alprazolam is also found in humans. Their half-lives appear to be similar to that of alprazolam. The pharmacokinetic parameters at steady-state for the two hydroxylated metabolites of alprazolam (4-hydroxyalprazolam and  $\alpha$ -hydroxyalprazolam) were similar for alprazolam immediate-release tablets and alprazolam extended-release tablets, indicating that the metabolism of alprazolam is not affected by absorption rate.

### *Excretion*

Alprazolam and its metabolites are excreted primarily in the urine.

### Specific Populations

#### *Geriatric Patients*

The mean  $T_{1/2}$  of alprazolam was 16.3 hours (range: 9.0 to 26.9 hours) in healthy elderly subjects compared to 11.0 hours (range: 6.3 to 15.8 hours, n=16) in healthy adult subjects.

#### *Obese Patients*

The mean  $T_{1/2}$  of alprazolam was 21.8 hours (range: 9.9 to 40.4 hours) in a group of obese subjects.

#### *Patients with Hepatic Impairment*

The mean  $T_{1/2}$  of alprazolam was 19.7 hours (range: 5.8 to 65.3 hours) in patients with alcoholic liver disease.

#### *Racial or Ethnic Groups*

Maximal concentrations and  $T_{1/2}$  of alprazolam are approximately 15% and 25% higher in Asians compared to Caucasians.

#### *Smoking*

Alprazolam concentrations may be reduced by up to 50% in smokers compared to non-smokers.

### Drug Interaction Studies

#### *In Vivo Studies*

Most of the interactions that have been documented with alprazolam are with drugs that modulate CYP3A4 activity.

Compounds that are inhibitors or inducers of CYP3A would be expected to increase or decrease plasma alprazolam concentrations, respectively. Drug products that have been studied *in vivo*, along with their effect on increasing alprazolam AUC, are as follows: ketoconazole, 3.98 fold; itraconazole, 2.66 fold; nefazodone, 1.98 fold; fluvoxamine, 1.96 fold; and erythromycin, 1.61 fold [see *Contraindications (4)*, *Warnings and Precautions (5.5)*, *Drug Interactions (7.2)*]. Other studied drugs include:

Cimetidine: Co-administration of cimetidine increased the maximum plasma concentration of alprazolam by 82%, decreased clearance by 42%, and increased  $T_{1/2}$  by 16%.

Fluoxetine: Co-administration of fluoxetine with alprazolam increased the maximum plasma concentration of alprazolam by 46%, decreased clearance by 21%, increased  $T_{1/2}$  by 17%, and decreased measured psychomotor performance.

Oral Contraceptives: Co-administration of oral contraceptives increased the maximum plasma concentration of alprazolam by 18%, decreased clearance by 22%, and increased  $T_{1/2}$  by 29%.

Carbamazepine: The oral clearance of alprazolam (given in a 0.8 mg single-dose) was increased from  $0.90 \pm 0.21$  mL/min/kg to  $2.13 \pm 0.54$  mL/min/kg and the elimination  $T_{1/2}$  was shortened (from  $17.1 \pm 4.9$  to  $7.7 \pm 1.7$  hour) following administration of 300 mg per day carbamazepine for 10 days [see *Drug Interactions (7.2)*]. However, the carbamazepine dose used in this study was fairly low compared to the recommended doses (1,000-1,200 mg per day); the effect at usual carbamazepine doses is unknown.

Ritonavir: Interactions involving HIV protease inhibitors (e.g., ritonavir) and alprazolam are complex and time dependent. Short-term low doses of ritonavir (4 doses of 200 mg) increased mean AUC of alprazolam by about 2.5-fold, and did not significantly affect  $C_{max}$  of alprazolam. The elimination  $T_{1/2}$  was prolonged (30 hours versus 13 hours). However, upon extended exposure to ritonavir (500 mg, twice daily for 10 days), CYP3A induction offset this inhibition. Alprazolam AUC and  $C_{max}$  was reduced by 12% and 16%, respectively, in the presence of ritonavir. The elimination  $T_{1/2}$  of alprazolam was not significantly changed [see *Warnings and Precautions (5.5)*].

Sertraline: A single-dose of alprazolam 1 mg and steady-state dose of sertraline (50 to 150 mg per day) did not reveal any clinically significant changes in the pharmacokinetics of alprazolam.

Imipramine and Desipramine: The steady-state plasma concentrations of imipramine and desipramine have been reported to be increased an average of 31% and 20%, respectively, by the concomitant administration of alprazolam in doses up to 4 mg per day.

Warfarin: Alprazolam did not affect the prothrombin or plasma warfarin levels in male volunteers administered sodium warfarin orally.

### *In Vitro Studies*

Data from *in vitro* studies of alprazolam suggest a possible drug interaction of alprazolam with paroxetine. The ability of alprazolam to induce human hepatic enzyme systems has not been determined.

## **13 NONCLINICAL TOXICOLOGY**

### **13.1 Carcinogenesis, Mutagenesis, Impairment of Fertility**

#### Carcinogenesis

No evidence of carcinogenic potential was observed in rats or mice administered alprazolam for 2 years at doses up to 30 and 10 mg/kg/day, respectively. These doses

are 29 times and 4.8 times the maximum recommended human dose of 10 mg/day based on mg/m<sup>2</sup> body surface area, respectively.

### Mutagenesis

Alprazolam was negative in the *in vitro* Ames bacterial reverse mutation assay and DNA Damage/Alkaline Elution Assay and *in vivo* rat micronucleus genetic toxicology assays.

### Impairment of Fertility

Alprazolam produced no impairment of fertility in rats at doses up to 5 mg/kg per day, which is approximately 5 times the maximum recommended human dose of 10 mg per day based on mg/m<sup>2</sup> body surface area.

## **13.2 Animal Toxicology and/or Pharmacology**

When rats were treated with alprazolam at oral doses of 3 mg/kg, 10 mg/kg, and 30 mg/kg per day (3 to 29 times the maximum recommended human dose based on mg/m<sup>2</sup> body surface area) for 2 years, a tendency for a dose related increase in the number of cataracts was observed in females and a tendency for a dose related increase in corneal vascularization was observed in males. These lesions did not appear until after 11 months of treatment.

## **14 CLINICAL STUDIES**

The efficacy of alprazolam extended-release tablets in the treatment of panic disorder in adults was established in two 6-week, flexible-dose, placebo-controlled studies in adult patients meeting DSM-III criteria for panic disorder. In these studies, patients were treated with alprazolam extended-release tablets in a dose range of 1 mg to 10 mg once per day. The effectiveness of alprazolam extended-release tablets was assessed on the basis of changes in various measures of panic attack frequency, on various measures of the Clinical Global Impression, and on the Overall Phobia Scale. In all, there were 7 primary efficacy measures in these studies, and alprazolam extended-release tablets was superior to placebo on all 7 outcomes in both studies. The mean dose of alprazolam extended-release tablets at the last treatment visit was 4.2 mg per day in the first study and 4.6 mg per day in the second.

In addition, there were two 8-week, fixed-dose, placebo-controlled studies of alprazolam extended-release tablets in adult patients with panic disorder, involving fixed alprazolam extended-release tablets doses of 4 mg and 6 mg/ once per day that did not show a benefit for either dose of alprazolam extended-release tablets.

Analyses of the relationship between treatment outcome and gender did not suggest any differential responsiveness on the basis of gender.

## **16 HOW SUPPLIED/STORAGE AND HANDLING**

Alprazolam Extended-Release Tablets, USP are available as follows:

**0.5 mg** (green, round, biconvex tablets, debossed "IP 9" on one side)

Bottles of 30:               NDC 65162-809-03

Bottles of 60:               NDC 65162-809-06



Bottles of 500: NDC 65162-809-50

**1 mg** (yellow, round, biconvex tablets, debossed "IP 10" on one side)

Bottles of 30: NDC 65162-810-03

Bottles of 60: NDC 65162-810-06

Bottles of 500: NDC 65162-810-50

**2 mg** (blue, round, biconvex tablets, debossed "IP 12" on one side)

Bottles of 30: NDC 65162-812-03

Bottles of 60: NDC 65162-812-06

Bottles of 500: NDC 65162-812-50

**3 mg** (white, round, biconvex tablets, debossed "IP 13" on one side)

Bottles of 30: NDC 65162-813-03

Bottles of 60: NDC 65162-813-06

Bottles of 500: NDC 65162-813-50

Store at 20° to 25°C (68° to 77°F); excursions permitted between 15° to 30°C (59° to 86°F) [see USP Controlled Room Temperature].

## **17 PATIENT COUNSELING INFORMATION**

Advise the patient to read the FDA-approved patient labeling (Medication Guide).

### Risks from Concomitant Use with Opioids

Advise both patients and caregivers about the risks of potentially fatal respiratory depression and sedation when alprazolam is used with opioids and not to use such drugs concomitantly unless supervised by a healthcare provider. Advise patients not to drive or operate heavy machinery until the effects of concomitant use with the opioid have been determined [see *Warnings and Precautions (5.1)*, *Drug Interactions (7.1)*].

### Abuse, Misuse, and Addiction

Inform patients that the use of alprazolam, even at recommended dosages, exposes users to risks of abuse, misuse, and addiction, which can lead to overdose and death, especially when used in combination with other medications (e.g., opioid analgesics), alcohol, and/or illicit substances. Inform patients about the signs and symptoms of benzodiazepine abuse, misuse, and addiction; to seek medical help if they develop these signs and/or symptoms; and on the proper disposal of unused drug [see *Warnings and Precautions (5.2)*, *Drug Abuse and Dependence (9.2)*].

### Withdrawal Reactions

Inform patients that the continued use of alprazolam may lead to clinically significant physical dependence and that abrupt discontinuation or rapid dosage reduction of alprazolam may precipitate acute withdrawal reactions, which can be life-threatening. Inform patients that in some cases, patients taking benzodiazepines have developed a protracted withdrawal syndrome with withdrawal symptoms lasting weeks to more than

12 months. Instruct patients that discontinuation or dosage reduction of alprazolam may require a slow taper *[see Warnings and Precautions (5.3), Drug Abuse and Dependence (9.3)]*.

#### Effects on Driving and Operating Machinery

Advise patients not to drive a motor vehicle or operate heavy machinery while taking alprazolam due to its CNS depressant effects. Also advise patients to avoid use of alcohol or other CNS depressants while taking alprazolam *[see Warnings and Precautions (5.3)]*.

#### Patients with Depression

Advise patients, their families and caregivers to look for signs of suicidality or worsening depression, and to inform the patient's healthcare provider immediately *[see Warnings and Precautions (5.6)]*.

#### Concomitant Medications

Advise patients to inform their healthcare provider of all medicines they take, including prescription and nonprescription medications, vitamins and herbal supplements *[see Drug Interactions (7)]*.

#### Pregnancy

Advise pregnant females that use of alprazolam late in pregnancy can result in sedation (respiratory depression, lethargy, hypotonia) and/or withdrawal symptoms (hyperreflexia, irritability, restlessness, tremors, inconsolable crying, and feeding difficulties) in newborns *[see Warnings and Precautions (5.8), Use in Specific Populations (8.1)]*. Instruct patients to inform their healthcare provider if they are pregnant.

Advise patients that there is a pregnancy exposure registry that monitors pregnancy outcomes in women exposed to alprazolam during pregnancy *[see Use in Specific Populations (8.1)]*.

#### Lactation

Advise patients that breastfeeding is not recommended during treatment with alprazolam *[see Use in Specific Populations (8.2)]*.

Manufactured by:

**Amneal Pharmaceuticals of NY, LLC**

Hauppauge, NY 11788

Distributed by:

**Amneal Pharmaceuticals LLC**

Glasgow, KY 42141

Rev. 05-2023-03

## **MEDICATION GUIDE**

**Alprazolam (al pra' zoe lam) Extended-Release Tablets USP, C-IV**

## What is the most important information I should know about alprazolam extended-release tablets?

- **Alprazolam extended-release tablets are a benzodiazepine medicine. Taking benzodiazepines with opioid medicines, alcohol, or other central nervous system (CNS) depressants (including street drugs) can cause severe drowsiness, breathing problems (respiratory depression), coma and death.** Get emergency help right away if any of the following happens:
  - shallow or slowed breathing
  - breathing stops (which may lead to the heart stopping)
  - excessive sleepiness (sedation)

Do not drive or operate heavy machinery until you know how taking alprazolam extended-release tablets with opioids affects you.

- **Risk of abuse, misuse, and addiction.** There is a risk of abuse, misuse, and addiction with benzodiazepines including alprazolam extended-release tablets which can lead to overdose and serious side effects including coma and death.
  - **Serious side effects including coma and death have happened in people who have abused or misused benzodiazepines, including alprazolam extended-release tablets.** These serious side effects may also include delirium, paranoia, suicidal thoughts or actions, seizures, and difficulty breathing. **Call your healthcare provider or go to the nearest hospital emergency room right away if you get any of these serious side effects.**
  - **You can develop an addiction even if you take alprazolam extended-release tablets as prescribed by your healthcare provider.**
  - **Take alprazolam extended-release tablets exactly as your healthcare provider prescribed.**
  - Do not share your alprazolam extended-release tablets with other people.
  - Keep alprazolam extended-release tablets in a safe place and away from children.
- **Physical dependence and withdrawal reactions.** Alprazolam extended-release tablets can cause physical dependence and withdrawal reactions.
  - **Do not suddenly stop taking alprazolam extended-release tablets.** Stopping alprazolam extended-release tablets suddenly can cause serious and life-threatening side effects, including, unusual movements, responses, or expressions, seizures, sudden and severe mental or nervous system changes, depression, seeing or hearing things that others do not see or hear, an extreme increase in activity or talking, losing touch with reality, and suicidal thoughts or actions. **Call your healthcare provider or go to the nearest hospital emergency room right away if you get any of the following symptoms.**
  - **Some people who suddenly stop benzodiazepines, have symptoms that can last for several weeks to more than 12 months,** including, anxiety, trouble remembering, learning, or concentrating, depression, problems sleeping, feeling like insects are crawling under your skin, weakness, shaking, muscle twitching, burning or prickling feeling in your hands, arms, legs or feet, and ringing in your ears.
  - Physical dependence is not the same as drug addiction. Your healthcare provider can tell you more about the differences between physical dependence and drug

addiction.

- Do not take more alprazolam extended-release tablets than prescribed or take alprazolam extended-release tablets for longer than prescribed.

### **What are alprazolam extended-release tablets?**

- Alprazolam extended-release tablets are a prescription medicine used to treat panic disorder, with or without a fear of places and situations that might cause panic, helplessness, or embarrassment (agoraphobia)
- **Alprazolam extended-release tablets are a federal controlled substance (C-IV) because it contains alprazolam that can be abused or lead to dependence.** Keep alprazolam extended-release tablets in a safe place to prevent misuse and abuse. Selling or giving away alprazolam extended-release tablets may harm others and is against the law. Tell your healthcare provider if you have abused or been dependent on alcohol, prescription medicines or street drugs.
- It is not known if alprazolam extended-release tablets are safe and effective in children.
- Elderly patients are especially susceptible to dose related adverse effects when taking alprazolam extended-release tablets.
- It is not known if alprazolam extended-release tablets are safe and effective in the treatment of panic disorder for use longer than 8 weeks.

### **Do not take alprazolam extended-release tablets if:**

- you are allergic to alprazolam, other benzodiazepines, or any of the ingredients in alprazolam extended-release tablets. See the end of this Medication Guide for a complete list of ingredients in alprazolam extended-release tablets.
- you are taking antifungal medicines including ketoconazole and itraconazole

### **Before you take alprazolam extended-release tablets, tell your healthcare provider about all of your medical conditions, including if you:**

- have or have had depression, mood problems, or suicidal thoughts or behavior
- have liver or kidney problems
- have lung disease or breathing problems
- are pregnant or plan to become pregnant.
- Taking Alprazolam extended-release tablets late in pregnancy may cause your baby to have symptoms of sedation (breathing problems, sluggishness, low muscle tone), and/or withdrawal symptoms (jitteriness, irritability, restlessness, shaking, excessive crying, feeding problems).
- Tell your healthcare provider right away if you become pregnant or think you are pregnant during treatment with alprazolam.
- There is a pregnancy registry for women who take alprazolam during pregnancy. The purpose of the registry is to collect information about the health of you and your baby. If you become pregnant during treatment with alprazolam, talk to your healthcare provider about registering with the National Pregnancy Registry for Psychiatric Medications. You can register by calling 1-866-961-2388 or visiting <https://womensmentalhealth.org/research/pregnancyregistry/>.
- are breastfeeding or plan to breastfeed. Alprazolam passes into your breast milk.
  - Talk to your healthcare provider about the best way to feed your baby if you take alprazolam extended-release tablets.

- Breastfeeding is not recommended during treatment with alprazolam.

**Tell your healthcare provider about all the medicines you take**, including prescription and over-the-counter medicines, vitamins, and herbal supplements. Taking alprazolam extended-release tablets with certain other medicines can cause side effects or affect how well alprazolam extended-release tablets or the other medicines work. Do not start or stop other medicines without talking to your healthcare provider.

### **How should I take alprazolam extended-release tablets?**

- See “What is the most important information I should know about alprazolam extended-release tablets?”
- Take alprazolam extended-release tablets exactly as your healthcare provider tells you to take it. Your healthcare provider will tell you how much alprazolam extended-release tablets to take and when to take it.
- If you take too much alprazolam extended-release tablets, call your healthcare provider or go to the nearest hospital emergency room right away.
- Swallow alprazolam extended-release tablets whole. Do not crush, chew or break alprazolam extended-release tablets.

### **What are the possible side effects of alprazolam extended-release tablets?**

**Alprazolam extended-release tablets may cause serious side effects, including:**

- See “What is the most important information I should know about alprazolam extended-release tablets?”
- **Seizures.** Stopping alprazolam extended-release tablets can cause seizures and seizures that will not stop (status epilepticus).
- **Mania.** Alprazolam extended-release tablets may cause an increase in activity and talking (hypomania and mania) in people who have depression.
- **Alprazolam extended-release tablets can make you sleepy or dizzy and can slow your thinking and motor skills.**
- Do not drive, operate heavy machinery, or do other dangerous activities until you know how alprazolam extended-release tablets affects you.
- **Do not drink alcohol or take other drugs that may make you sleepy or dizzy while taking alprazolam extended-release tablets without first talking to your healthcare provider.** When taken with alcohol or drugs that cause sleepiness or dizziness, alprazolam extended-release tablets may make your sleepiness or dizziness much worse.

**The most common side effects of alprazolam extended-release tablets include:**

- sleepiness
- changes in sex drive (libido)
- trouble saying words clearly (dysarthria)
- constipation

- problems with memory
- nausea
- problems with coordination

These are not all the possible side effects of alprazolam extended-release tablets. Call your doctor for medical advice about side effects. You may report side effects to FDA at 1-800-FDA-1088.

#### **How should I store alprazolam extended-release tablets?**

- Store alprazolam extended-release tablets at room temperature between 68° to 77°F (20° to 25°C)
- **Keep alprazolam extended-release tablets and all medicines out of the reach of children.**

#### **General information about the safe and effective use of alprazolam extended-release tablets.**

- Medicines are sometimes prescribed for purposes other than those listed in a Medication Guide.
- Do not use alprazolam extended-release tablets for a condition for which it was not prescribed.
- Do not give alprazolam extended-release tablets to other people, even if they have the same symptoms that you have. It may harm them.
- You can ask your pharmacist or healthcare provider for information about alprazolam extended-release tablets that is written for health professionals.

#### **What are the ingredients in alprazolam extended-release tablets?**

**Active ingredient:** alprazolam, USP

**Inactive ingredients:** lactose monohydrate, hypromellose, calcium silicate and magnesium stearate. In addition, the 0.5 mg tablet contains FD&C Blue #2 and D&C Yellow #10. The 1 mg tablet contains D&C Yellow #10. The 2 mg tablet contains FD&C Blue #2.

For more information, go to [www.amneal.com](http://www.amneal.com) or call 1-877-835-5472.

Manufactured by:

**Amneal Pharmaceuticals of NY, LLC**

Hauppauge, NY 11788

Distributed by:

**Amneal Pharmaceuticals LLC**

Glasgow, KY 42141

Rev. 03-2024-04

This Medication Guide has been approved by the U.S. Food and Drug Administration.

Dispense with Medication Guide available at:  
documents.amneal.com/mg/alprazolam-er.pdf

### PRINCIPAL DISPLAY PANEL

NDC 65162-809-03

**Alprazolam Extended-Release Tablets, USP**

**0.5 mg**

PHARMACIST: Please Dispense with Medication Guide Provided Separately.

Rx only  
30 Tablets

IP 9

Each extended-release tablet contains 0.5 mg alprazolam, USP.

**Usual Dosage:** See accompanying prescribing information.

Store at 20° to 25°C (68° to 77°F); excursions permitted between 15° to 30°C (59° to 86°F) [see USP Controlled Room Temperature]. Keep container tightly closed.


Dispense in a tight, child-resistant container as defined in the USP.

**Questions or Comments?**  
Call 1-877-835-5472; Monday through Friday 9AM - 5PM EST.

Manufactured by: **Amneal Pharmaceuticals of NY, LLC**  
Hauppauge, NY 11788

Distributed by: **Amneal Pharmaceuticals LLC**  
Glasgow, KY 42141

Rev. 06-2019-00



N 3 65162 80903 9

Non-Varnish Area

NDC 65162-809-50

**Alprazolam Extended-Release Tablets, USP**


**0.5 mg**

PHARMACIST: Dispense the Medication Guide to each Patient.

Rx only  
500 Tablets

IP 9

Print Medication Guide at:  
documents.amneal.com/mg/alprazolam-er.pdf  
or Scan QR Code:



Each extended-release tablet contains 0.5 mg alprazolam, USP.

**Usual Dosage:** See accompanying prescribing information.

Store at 20° to 25°C (68° to 77°F); excursions permitted between 15° to 30°C (59° to 86°F) [see USP Controlled Room Temperature]. Keep container tightly closed.


Dispense in a tight, child-resistant container as defined in the USP.

**Questions or Comments?**  
Call 1-877-835-5472  
Monday through Friday 9AM - 5PM EST.

Manufactured by: **Amneal Pharmaceuticals of NY, LLC**  
Hauppauge, NY 11788

Distributed by: **Amneal Pharmaceuticals LLC**  
Glasgow, KY 42141

Rev. 12-2021-01



N 3 65162 80950 3

3/4"

Non-Varnish Area

### PRINCIPAL DISPLAY PANEL

NDC 65162-810-03

**Alprazolam Extended-Release Tablets, USP**

**1 mg**

PHARMACIST: Please Dispense with Medication Guide Provided Separately.

Rx only  
30 Tablets

IP 10

Each extended-release tablet contains 1 mg alprazolam, USP.

**Usual Dosage:** See accompanying prescribing information.

Store at 20° to 25°C (68° to 77°F); excursions permitted between 15° to 30°C (59° to 86°F) [see USP Controlled Room Temperature]. Keep container tightly closed.


Dispense in a tight, child-resistant container as defined in the USP.

**Questions or Comments?**  
Call 1-877-835-5472; Monday through Friday 9AM - 5PM EST.

Manufactured by: **Amneal Pharmaceuticals of NY, LLC**  
Hauppauge, NY 11788

Distributed by: **Amneal Pharmaceuticals LLC**  
Glasgow, KY 42141

Rev. 06-2019-00



N 3 65162 81003 5

Non-Varnish Area

NDC 65162-810-50

# Alprazolam Extended-Release Tablets, USP



1 mg

**PHARMACIST:**  
Dispense the Medication  
Guide to each Patient.

IP 10

**Rx only**  
500 Tablets



Each extended-release tablet contains 1 mg alprazolam, USP.

**Usual Dosage:** See accompanying prescribing information.

**Store at 20° to 25°C (68° to 77°F); excursions permitted between 15° to 30°C (59° to 86°F) [see USP Controlled Room Temperature]. Keep container tightly closed.**

Dispense in a tight, child-resistant container as defined in the USP.

**Questions or Comments?**

**Call 1-877-835-5472**

**Monday through Friday 9AM - 5PM EST.**

Manufactured by: **Amneal Pharmaceuticals of NY, LLC**  
Hauppauge, NY 11788

Distributed by: **Amneal Pharmaceuticals LLC**  
Glasgow, KY 42141

Rev. 12-2021-01

Print Medication Guide at:  
[documents.amneal.com/mg/alprazolam-er.pdf](https://documents.amneal.com/mg/alprazolam-er.pdf)  
or Scan QR Code:



N 3 65162 81050 9

3/4"  
Non-Varnish Area

## PRINCIPAL DISPLAY PANEL

NDC 65162-812-03

# Alprazolam Extended-Release Tablets, USP



2 mg

**PHARMACIST:** Please Dispense  
with Medication Guide Provided  
Separately.

IP 12

**Rx only**  
30 Tablets



Each extended-release tablet contains 2 mg alprazolam, USP.

**Usual Dosage:** See accompanying prescribing information.

**Store at 20° to 25°C (68° to 77°F); excursions permitted between 15° to 30°C (59° to 86°F) [see USP Controlled Room Temperature]. Keep container tightly closed.**

Dispense in a tight, child-resistant container as defined in the USP.

**Questions or Comments?**

**Call 1-877-835-5472; Monday through Friday 9AM - 5PM EST.**

Manufactured by: **Amneal Pharmaceuticals of NY, LLC**  
Hauppauge, NY 11788

Distributed by: **Amneal Pharmaceuticals LLC**  
Glasgow, KY 42141

Rev. 06-2019-00



N 3 65162 81203 9

Non-Varnish Area

NDC 65162-812-50

# Alprazolam Extended-Release Tablets, USP



2 mg

**PHARMACIST:**  
Dispense the Medication  
Guide to each Patient.

IP 12

**Rx only**  
500 Tablets



Each extended-release tablet contains 2 mg alprazolam, USP.

**Usual Dosage:** See accompanying prescribing information.

**Store at 20° to 25°C (68° to 77°F); excursions permitted between 15° to 30°C (59° to 86°F) [see USP Controlled Room Temperature]. Keep container tightly closed.**

Dispense in a tight, child-resistant container as defined in the USP.

**Questions or Comments?**

**Call 1-877-835-5472**

**Monday through Friday 9AM - 5PM EST.**

Manufactured by: **Amneal Pharmaceuticals of NY, LLC**  
Hauppauge, NY 11788

Distributed by: **Amneal Pharmaceuticals LLC**  
Glasgow, KY 42141

Rev. 12-2021-01

Print Medication Guide at:  
[documents.amneal.com/mg/alprazolam-er.pdf](https://documents.amneal.com/mg/alprazolam-er.pdf)  
or Scan QR Code:



N 3 65162 81250 3

3/4"  
Non-Varnish Area

## PRINCIPAL DISPLAY PANEL



NDC 65162-813-03

# Alprazolam Extended-Release Tablets, USP



**3 mg**

PHARMACIST: Please Dispense with Medication Guide Provided Separately.

IP 13

**Rx only**  
**30 Tablets**



Each extended-release tablet contains 3 mg alprazolam, USP.

**Usual Dosage:** See accompanying prescribing information.

Store at 20° to 25°C (68° to 77°F); excursions permitted between 15° to 30°C (59° to 86°F) [see USP Controlled Room Temperature]. Keep container tightly closed.

Dispense in a tight, child-resistant container as defined in the USP.

**Questions or Comments?**

Call 1-877-835-5472; Monday through Friday 9AM - 5PM EST.

Manufactured by: **Amneal Pharmaceuticals of NY, LLC**  
Hauppauge, NY 11788

Distributed by: **Amneal Pharmaceuticals LLC**  
Glasgow, KY 42141

Rev. 06-2019-00



Non-Varnish Area

NDC 65162-813-50

# Alprazolam Extended-Release Tablets, USP



**3 mg**

PHARMACIST: Dispense the Medication Guide to each Patient.

IP 13

**Rx only**  
**500 Tablets**



Each extended-release tablet contains 3 mg alprazolam, USP.  
**Usual Dosage:** See accompanying prescribing information.

Store at 20° to 25°C (68° to 77°F); excursions permitted between 15° to 30°C (59° to 86°F) [see USP Controlled Room Temperature]. Keep container tightly closed.

Dispense in a tight, child-resistant container as defined in the USP.

**Questions or Comments?**

Call 1-877-835-5472

Monday through Friday 9AM - 5PM EST.

Manufactured by: **Amneal Pharmaceuticals of NY, LLC**  
Hauppauge, NY 11788

Distributed by: **Amneal Pharmaceuticals LLC**  
Glasgow, KY 42141

Rev. 12-2021-01

Print Medication Guide at:  
[documents.amneal.com/mg/alprazolam-er.pdf](https://documents.amneal.com/mg/alprazolam-er.pdf)  
or Scan QR Code:



3/4" Non-Varnish Area

## ALPRAZOLAM

alprazolam tablet, extended release

### Product Information

<b>Product Type</b>	HUMAN PRESCRIPTION DRUG	<b>Item Code (Source)</b>	NDC:65162-809
<b>Route of Administration</b>	ORAL	<b>DEA Schedule</b>	CIV

### Active Ingredient/Active Moiety

Ingredient Name	Basis of Strength	Strength
ALPRAZOLAM (UNII: YU55MQ3IZY) (ALPRAZOLAM - UNII:YU55MQ3IZY)	ALPRAZOLAM	0.5 mg

### Inactive Ingredients

Ingredient Name	Strength
D&C YELLOW NO. 10 (UNII: 35SW5USQ3G)	

### Product Characteristics

<b>Color</b>	green	<b>Score</b>	no score
<b>Shape</b>	ROUND (Biconvex)	<b>Size</b>	10mm
<b>Flavor</b>		<b>Imprint Code</b>	IP;9
<b>Contains</b>			

### Packaging

#	Item Code	Package Description	Marketing Start Date	Marketing End Date
1	NDC:65162-809-03	30 in 1 BOTTLE; Type 0: Not a Combination Product	12/03/2009	
2	NDC:65162-809-06	60 in 1 BOTTLE; Type 0: Not a Combination Product	12/03/2009	
3	NDC:65162-809-50	500 in 1 BOTTLE; Type 0: Not a Combination Product	12/03/2009	

### Marketing Information

Marketing Category	Application Number or Monograph Citation	Marketing Start Date	Marketing End Date
ANDA	ANDA078387	12/03/2009	

## ALPRAZOLAM

alprazolam tablet, extended release

### Product Information

<b>Product Type</b>	HUMAN PRESCRIPTION DRUG	<b>Item Code (Source)</b>	NDC:65162-810
<b>Route of Administration</b>	ORAL	<b>DEA Schedule</b>	CIV

### Active Ingredient/Active Moiety

Ingredient Name	Basis of Strength	Strength
ALPRAZOLAM (UNII: YU55MQ3IZY) (ALPRAZOLAM - UNII:YU55MQ3IZY)	ALPRAZOLAM	1 mg

### Product Characteristics

<b>Color</b>	yellow	<b>Score</b>	no score
<b>Shape</b>	ROUND (Biconvex)	<b>Size</b>	10mm
<b>Flavor</b>		<b>Imprint Code</b>	IP;10
<b>Contains</b>			

### Packaging

#	Item Code	Package Description	Marketing Start Date	Marketing End Date
1	NDC:65162-810-03	30 in 1 BOTTLE; Type 0: Not a Combination Product	12/03/2009	

2	NDC:65162-810-06	60 in 1 BOTTLE; Type 0: Not a Combination Product	12/03/2009	
3	NDC:65162-810-50	500 in 1 BOTTLE; Type 0: Not a Combination Product	12/03/2009	

## Marketing Information

Marketing Category	Application Number or Monograph Citation	Marketing Start Date	Marketing End Date
ANDA	ANDA078387	12/03/2009	

## ALPRAZOLAM

alprazolam tablet, extended release

### Product Information

<b>Product Type</b>	HUMAN PRESCRIPTION DRUG	<b>Item Code (Source)</b>	NDC:65162-812
<b>Route of Administration</b>	ORAL	<b>DEA Schedule</b>	CIV

### Active Ingredient/Active Moiety

Ingredient Name	Basis of Strength	Strength
ALPRAZOLAM (UNII: YU55MQ3IZY) (ALPRAZOLAM - UNII:YU55MQ3IZY)	ALPRAZOLAM	2 mg

### Product Characteristics

<b>Color</b>	blue	<b>Score</b>	no score
<b>Shape</b>	ROUND (Biconvex)	<b>Size</b>	10mm
<b>Flavor</b>		<b>Imprint Code</b>	IP;12
<b>Contains</b>			

### Packaging

#	Item Code	Package Description	Marketing Start Date	Marketing End Date
1	NDC:65162-812-03	30 in 1 BOTTLE; Type 0: Not a Combination Product	12/03/2009	
2	NDC:65162-812-06	60 in 1 BOTTLE; Type 0: Not a Combination Product	12/03/2009	
3	NDC:65162-812-50	500 in 1 BOTTLE; Type 0: Not a Combination Product	12/03/2009	

## Marketing Information

Marketing Category	Application Number or Monograph Citation	Marketing Start Date	Marketing End Date
ANDA	ANDA078387	12/03/2009	

# ALPRAZOLAM

alprazolam tablet, extended release

## Product Information

<b>Product Type</b>	HUMAN PRESCRIPTION DRUG	<b>Item Code (Source)</b>	NDC:65162-813
<b>Route of Administration</b>	ORAL	<b>DEA Schedule</b>	CIV

## Active Ingredient/Active Moiety

<b>Ingredient Name</b>	<b>Basis of Strength</b>	<b>Strength</b>
ALPRAZOLAM (UNII: YU55MQ3IZY) (ALPRAZOLAM - UNII:YU55MQ3IZY)	ALPRAZOLAM	3 mg

## Product Characteristics

<b>Color</b>	white	<b>Score</b>	no score
<b>Shape</b>	ROUND (Biconvex)	<b>Size</b>	10mm
<b>Flavor</b>		<b>Imprint Code</b>	IP;13
<b>Contains</b>			

## Packaging

#	Item Code	Package Description	Marketing Start Date	Marketing End Date
1	NDC:65162-813-03	30 in 1 BOTTLE; Type 0: Not a Combination Product	12/03/2009	
2	NDC:65162-813-06	60 in 1 BOTTLE; Type 0: Not a Combination Product	12/03/2009	
3	NDC:65162-813-50	500 in 1 BOTTLE; Type 0: Not a Combination Product	12/03/2009	

## Marketing Information

<b>Marketing Category</b>	<b>Application Number or Monograph Citation</b>	<b>Marketing Start Date</b>	<b>Marketing End Date</b>
ANDA	ANDA078387	12/03/2009	

**Labeler** - Amneal Pharmaceuticals LLC (123797875)

Revised: 3/2024

Amneal Pharmaceuticals LLC