

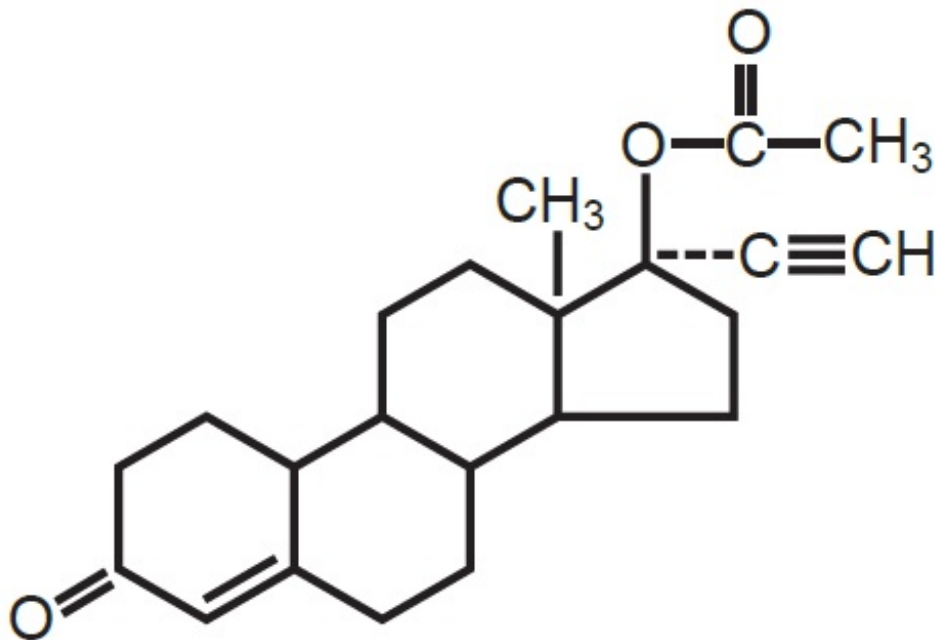
**GALLIFREY- norethindrone acetate tablet**  
**Xiromed LLC**

-----  
**Gallifrey™ (Norethindrone Acetate Tablets USP, 5 mg)**

**DESCRIPTION**

Gallifrey (Norethindrone acetate tablets, USP), 5 mg oral tablets.

Gallifrey, (17-hydroxy-19-nor-17 $\alpha$ -pregn-4-en-20-yn-3-one acetate), a synthetic, orally active progestin, is the acetic acid ester of norethindrone. It is a white, or creamy white, crystalline powder.



Gallifrey tablets contain the following inactive ingredients: lactose anhydrous, lactose monohydrate, magnesium stearate, and microcrystalline cellulose.

*The USP Dissolution Test is pending.*

**CLINICAL PHARMACOLOGY**

Norethindrone acetate induces secretory changes in an estrogen-primed endometrium. On a weight basis, it is twice as potent as norethindrone.

**PHARMACOKINETICS**

*Absorption*

Norethindrone acetate is completely and rapidly deacetylated to norethindrone (NET)

after oral administration, and the disposition of norethindrone acetate is indistinguishable from that of orally administered norethindrone. Norethindrone acetate is rapidly absorbed from norethindrone acetate tablets, with maximum plasma concentration of norethindrone generally occurring at about 2 hours post-dose. The pharmacokinetic parameters of norethindrone following single oral administration of norethindrone acetate tablets in 29 healthy female volunteers are summarized in Table 1.

**Table 1 Pharmacokinetic Parameters after a Single Dose of Norethindrone Acetate Tablets in Healthy Women**

Norethindrone acetate tablets (n=29) Arithmetic Mean $\pm$ SD	
Norethindrone (NET)	
AUC (0-inf)(ng/ml*h)	166.9 $\pm$ 56.28
C <sub>max</sub> (ng/ml)	26.19 $\pm$ 6.19
t <sub>max</sub> (h)	1.83 $\pm$ 0.58
t <sub>1/2</sub> (h)	8.51 $\pm$ 2.19

AUC = area under the curve,

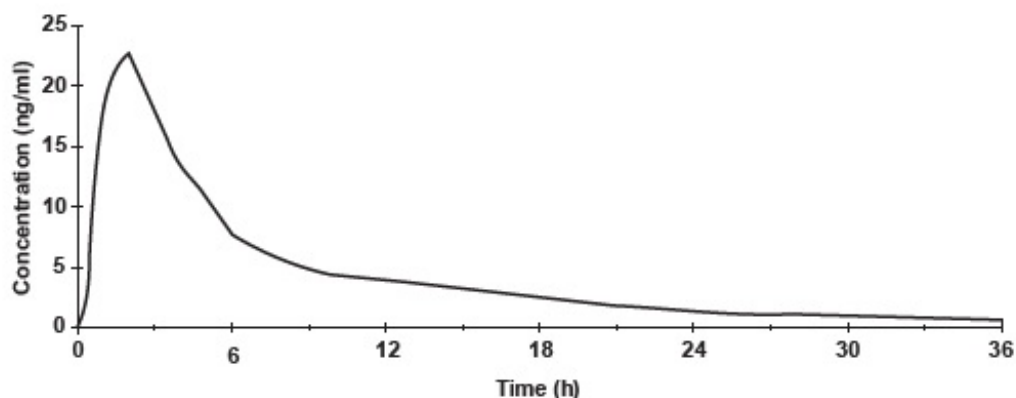
C<sub>max</sub> = maximum plasma concentration,

t<sub>max</sub> = time at maximum plasma concentration,

t<sub>1/2</sub> = half-life,

SD = standard deviation

**Figure 1. Mean Plasma Concentration Profile after a Single Dose of 5 mg Administered to 29 Healthy Female Volunteers under Fasting Conditions**



### *Effect of Food*

The effect of food administration on the pharmacokinetics of norethindrone acetate tablets has not been studied.

### *Distribution*

Norethindrone is 36% bound to sex hormone-binding globulin (SHBG) and 61% bound to albumin. Volume of distribution of norethindrone is about 4 L/kg.

### *Metabolism*

Norethindrone undergoes extensive biotransformation, primarily via reduction, followed by sulfate and glucuronide conjugation. The majority of metabolites in the circulation are sulfates, with glucuronides accounting for most of the urinary metabolites.

### *Excretion*

Plasma clearance value for norethindrone is approximately 0.4 L/hr/kg. Norethindrone is excreted in both urine and feces, primarily as metabolites. The mean terminal elimination half-life of norethindrone following a single dose administration of norethindrone acetate tablets is approximately 9 hours.

## **SPECIAL POPULATIONS**

### **Geriatrics**

The effect of age on the pharmacokinetics of norethindrone after norethindrone acetate tablets administration has not been evaluated.

### **Race**

The effect of race on the disposition of norethindrone after norethindrone acetate tablets administration has not been evaluated.

### **Renal Insufficiency**

The effect of renal disease on the disposition of norethindrone after norethindrone acetate tablets administration has not been evaluated. In premenopausal women with chronic renal failure undergoing peritoneal dialysis who received multiple doses of an oral contraceptive containing ethinyl estradiol and norethindrone, plasma norethindrone concentration was unchanged compared to concentrations in premenopausal women with normal renal function.

### **Hepatic Insufficiency**

The effect of hepatic disease on the disposition of norethindrone after norethindrone acetate tablets administration has not been evaluated. However, norethindrone acetate tablets are contraindicated in markedly impaired liver function or liver disease.

### **Drug Interactions**

No pharmacokinetic drug interaction studies investigating any drug-drug interactions with norethindrone acetate tablets have been conducted.

## **INDICATIONS AND USAGE**

### **Gallifrey (Norethindrone Acetate Tablets, USP), 5 mg**

Gallifrey is indicated for the treatment of secondary amenorrhea, endometriosis, and abnormal uterine bleeding due to hormonal imbalance in the absence of organic pathology, such as submucous fibroids or uterine cancer. **Gallifrey is not intended, recommended or approved to be used with concomitant estrogen therapy in postmenopausal women for endometrial protection.**

## **CONTRAINDICATIONS**

- Known or suspected pregnancy. There is no indication for norethindrone acetate tablets in pregnancy. (See **PRECAUTIONS**.)
- Undiagnosed vaginal bleeding
- Known, suspected or history of cancer of the breast
- Active deep vein thrombosis, pulmonary embolism or history of these conditions
- Active or recent (e.g., within the past year) arterial thromboembolic disease (e.g., stroke, myocardial infarction)
- Impaired liver function or liver disease
- As a diagnostic test for pregnancy
- Hypersensitivity to any of the drug components

## **WARNINGS**

### **1. Cardiovascular disorders**

Patients with risk factors for arterial vascular disease (e.g., hypertension, diabetes mellitus, tobacco use, hypercholesterolemia, and obesity) and/or venous thromboembolism (e.g., personal history or family history of VTE, obesity, and systemic lupus erythematosus) should be managed appropriately.

### **2. Visual abnormalities**

Discontinue medication pending examination if there is a sudden partial or complete loss of vision or if there is sudden onset of proptosis, diplopia, or migraine. If examination reveals papilledema or retinal vascular lesions, medication should be discontinued.

## **PRECAUTIONS**

### **1. General Precautions**

- Because this drug may cause some degree of fluid retention, conditions which might be influenced by this factor, such as epilepsy, migraine, cardiac or renal dysfunctions, require careful observation
- In cases of breakthrough bleeding, and in all cases of irregular bleeding per vagina, nonfunctional causes should be borne in mind. In cases of undiagnosed vaginal bleeding, adequate diagnostic measures are indicated
- Patients who have a history of clinical depression should be carefully observed and the drug discontinued if the depression recurs to a serious degree
- Data suggest that progestin therapy may have adverse effects on lipid and carbohydrate metabolism. The choice of progestin, its dose, and its regimen may be important in minimizing these adverse effects, but these issues will require further study before they are clarified. Women with hyperlipidemias and/or diabetes should be monitored closely during progestin therapy
- The pathologist should be advised of progestin therapy when relevant specimens are submitted

### **2. Information for the Patient**

Healthcare providers are advised to discuss the PATIENT INFORMATION leaflet with patients for whom they prescribe norethindrone acetate tablets.

### **3. Drug/Laboratory Tests Interactions**

The following laboratory test results may be altered by the use of estrogen/progestin combination drugs:

1. Accelerated prothrombin time, partial thromboplastin time, and platelet aggregation time; increased platelet count; increased factors II, VII antigen, VIII antigen, VIII coagulant activity, IX, X, XII, VII-X complex, II-VII-X complex, and beta-thromboglobulin; decreased levels of antifactor X<sub>a</sub> and antithrombin III, decreased antithrombin III activity; increased levels of fibrinogen and fibrinogen activity; increased plasminogen antigen and activity.
2. Increased thyroid-binding globulin (TBG) levels leading to increased circulating total thyroid hormone levels as measured by protein-bound iodine (PBI), T<sub>4</sub> levels (by column or by radioimmunoassay) or T<sub>3</sub> levels by radioimmunoassay. T<sub>3</sub> resin uptake is decreased, reflecting the elevated TBG. Free T<sub>4</sub> and free T<sub>3</sub> concentrations are unaltered. Patients on thyroid replacement therapy may require higher doses of thyroid hormone.
3. Other binding proteins may be elevated in serum (i.e., corticosteroid binding globulin (CBG), sex hormone binding globulin (SHBG)) leading to increased circulating corticosteroid and sex steroids, respectively. Free or biologically active hormone concentrations are unchanged. Other plasma proteins may be increased (angiotensinogen/renin substrate, alpha-1- antitrypsin, ceruloplasmin).
4. Increased plasma HDL and HDL<sub>2</sub> cholesterol subfraction concentrations, reduced LDL cholesterol concentration, increased triglycerides levels.
5. Impaired glucose metabolism.
6. Reduced response to metyrapone test.

### **4. Carcinogenesis, Mutagenesis, and Impairment of Fertility**

Some beagle dogs treated with medroxyprogesterone acetate developed mammary nodules. Although nodules occasionally appeared in control animals, they were intermittent in nature, whereas nodules in treated animals were larger and more numerous, and persisted. There is no general agreement as to whether the nodules are benign or malignant. Their significance with respect to humans has not been established.

### **5. Pregnancy Category X**

Norethindrone acetate is contraindicated during pregnancy as it may cause fetal harm when administered to pregnant women. Several reports suggest an association between intrauterine exposure to progestational drugs in the first trimester of pregnancy and congenital abnormalities in male and female fetuses. Some progestational drugs induce mild virilization of the external genitalia of female fetuses.

### **6. Nursing Mothers**

Detectable amounts of progestins have been identified in the milk of mothers receiving them. Caution should be exercised when progestins are administered to a nursing woman.

### **7. Pediatric Use**

Norethindrone acetate tablets are not indicated in children.

## **ADVERSE REACTIONS**

See **WARNINGS** and **PRECAUTIONS**.

The following adverse reactions have been observed in women taking progestins:

- Breakthrough bleeding
- Spotting
- Change in menstrual flow
- Amenorrhea
- Edema
- Changes in weight (decreases, increases)
- Changes in the cervical squamo-columnar junction and cervical secretions
- Cholestatic jaundice
- Rash (allergic) with and without pruritus
- Melasma or chloasma
- Clinical depression
- Acne
- Breast enlargement/tenderness
- Headache/migraine
- Urticaria
- Abnormalities of liver tests (i.e., AST, ALT, Bilirubin)
- Decreased HDL cholesterol and increased LDL/HDL ratio
- Mood swings
- Nausea
- Insomnia
- Anaphylactic/anaphylactoid reactions
- Thrombotic and thromboembolic events (e.g., deep vein thrombosis, pulmonary embolism, retinal vascular thrombosis, cerebral thrombosis and embolism)
- Optic neuritis (which may lead to partial or complete loss of vision)

## **DOSAGE AND ADMINISTRATION**

### **Gallifrey (Norethindrone Acetate Tablets, USP), 5 mg**

Therapy with Gallifrey tablets must be adapted to the specific indications and therapeutic response of the individual patient.

*Secondary amenorrhea, abnormal uterine bleeding due to hormonal imbalance in the absence of organic pathology:* 2.5 mg to 10 mg Gallifrey may be given daily for 5 to 10 days to produce secretory transformation of an endometrium that has been adequately primed with either endogenous or exogenous estrogen.

Progestin withdrawal bleeding usually occurs within three to seven days after discontinuing Gallifrey therapy. Patients with a past history of recurrent episodes of abnormal uterine bleeding may benefit from planned menstrual cycling with Gallifrey.

*Endometriosis:* Initial daily dosage of 5 mg Gallifrey for two weeks. Dosage should be increased by 2.5 mg per day every two weeks until 15 mg per day of Gallifrey is reached. Therapy may be held at this level for six to nine months or until annoying breakthrough bleeding demands temporary termination.

## HOW SUPPLIED

Gallifrey (Norethindrone acetate tablets, USP) is available as:

5 mg: White to off white, oval, flat-faced, beveled edge tablet debossed with **257** on one side of the tablet and a score (functional scoring) on the other side.

Available as follows:

Bottle of 50 tablets

NDC 70700-326-50

**Store at 20° to 25°C (68° to 77°F). [See USP Controlled Room Temperature.]**

**PHARMACIST:** Dispense a Patient Information Leaflet with each prescription.

## PATIENT INFORMATION

### **Gallifrey™ (Norethindrone Acetate Tablets, USP), 5 mg**

Read this PATIENT INFORMATION before you start taking Gallifrey and read what you get each time you refill Gallifrey. There may be new information. This information does not take the place of talking to your healthcare provider about your medical condition.

### **What is the most important information I should know about Gallifrey (A Progestin Hormone)?**

- **Do not use Gallifrey if you are pregnant, breast-feeding or are trying to conceive.**
- **Do not use Gallifrey if you have had a previous blood clot, stroke, or heart attack.**
- **Do not use Gallifrey if you are postmenopausal.**

### **What is Gallifrey?**

Gallifrey is similar to the progesterone hormones naturally produced by the body. Your healthcare provider may provide Gallifrey as individual tablets.

### **What is Gallifrey used for?**

Gallifrey is used for the treatment of secondary amenorrhea (absence of menstrual periods in women who have previously had a menstrual period who are not pregnant), the treatment of endometriosis, and the treatment of irregular menstrual periods due to hormone imbalance.

### **Who should not take Gallifrey?**

**You should not take Gallifrey if you are postmenopausal, pregnant or breast-feeding.**

You should not take Gallifrey if you have the following conditions:

- **Known or suspected pregnancy.** Gallifrey is not indicated during pregnancy as it may cause fetal harm when administered to pregnant women. There is an increased risk of minor birth defects in children whose mothers take Gallifrey during the first 4 months of pregnancy (mild masculinization of the external genitalia of the female fetus, as well as hypospadias in the male fetus). If you take Gallifrey and later find out you were pregnant, talk with your healthcare provider right away
- **History of blood clots in the legs, lungs, eyes, brain, or elsewhere, or a**

### **past history of these conditions**

- **Liver impairment or disease**
- **Known or suspected cancer of the breast.** If you have or had cancer of the breast, talk with your healthcare provider about whether you should take Gallifrey.
- **Undiagnosed vaginal bleeding**
- **Hypersensitivity to Gallifrey.** See the end of this leaflet for a list of all of the ingredients in Gallifrey.

### **What are the risks associated with Gallifrey?**

- **Risk to the Fetus:**

Gallifrey should not be used if you are pregnant. Gallifrey is contraindicated during pregnancy as it may cause fetal harm when administered to pregnant women. There is an increased risk of minor birth defects in children whose mothers take this drug during the first 4 months of pregnancy. Several reports suggest an association between mothers who take these drugs in the first trimester of pregnancy and congenital abnormalities in male and female babies. Although it is not clear that these events were drug related, you should check with your healthcare provider about the risks to your unborn child of any medication taken during pregnancy.

You should avoid using Gallifrey during pregnancy. If you take Gallifrey and later find you were pregnant when you took it, be sure to discuss this with your healthcare provider as soon as possible.

- **Abnormal Blood Clotting:**

Use of progestational drugs, such as Gallifrey, has been associated with changes in the blood-clotting system. These changes allow the blood to clot more easily, possibly allowing clots to form in the bloodstream. If blood clots do form in your bloodstream, they can cut off the blood supply to vital organs, causing serious problems. These problems may include a stroke (by cutting off blood to part of the brain), a heart attack (by cutting off blood to part of the heart), a pulmonary embolus (by cutting off blood to part of the lungs), visual loss or blindness (by cutting off blood vessels in the eye), or other problems. Any of these conditions may cause death or serious long-term disability. Call your healthcare provider right away if you suspect you have any of these conditions. He or she may advise you to stop using the drug.

- **Eye Abnormalities:**

Discontinue Gallifrey and call your healthcare provider right away if you experience sudden partial or complete loss of vision, blurred vision, or sudden onset of bulging eyes, double vision, or migraine.

### **These are some of the warning signs of serious side effects with progestin therapy:**

- Breast lumps
- Dizziness and faintness
- Changes in speech
- Severe headaches
- Chest pain
- Shortness of breath
- Pains in your legs
- Changes in vision



Call your healthcare provider right away if you get any of these warning signs, or any other unusual symptom that concerns you.

**Common side effects include:**

- Headache
- Breast pain
- Irregular vaginal bleeding or spotting
- Stomach/abdominal cramps/bloating
- Nausea and vomiting
- Hair loss

**Other side effects include:**

- High blood pressure
- Liver problems
- High blood sugar
- Fluid retention
- Enlargements of benign tumors of the uterus ("fibroids")
- Vaginal yeast infections
- Mental depression

These are not all the possible side effects of progestin and/or estrogen therapy. For more information, ask your healthcare provider or pharmacist.

**What can I do to lower my chances of getting a serious side effect with Gallifrey?**

- Talk with your healthcare provider regularly about whether you should continue taking Gallifrey.
- Have a breast exam and mammogram (breast x-ray) every year unless your healthcare provider tells you something else. If members of your family have had breast cancer or if you have ever had breast lumps or an abnormal mammogram, you may need to have breast exams more often
- If you have high blood pressure, high cholesterol (fat in the blood), diabetes, are overweight, or if you use tobacco, you may have higher chances for getting heart disease. Ask your healthcare provider for ways to lower your chances of getting heart attacks

**General information about the safe and effective use of Gallifrey**

Medicines are sometimes prescribed for conditions that are not mentioned in patient information leaflets. Do not take Gallifrey for conditions for which it was not prescribed. Do not give Gallifrey to other people, even if they have the same symptoms you have. It may harm them.

**Keep Gallifrey out of the reach of children.**

This leaflet provides a summary of the most important information about progestin and/or estrogen therapy. If you would like more information, talk with your healthcare provider or pharmacist. You can ask for information about Gallifrey that is written for health professionals.

**What are the ingredients in Gallifrey?**

Gallifrey contains the following inactive ingredients: anhydrous lactose, lactose monohydrate, magnesium stearate, and microcrystalline cellulose

Manufactured for:

**Xiromed, LLC**

Florham Park, NJ 07932

Product of India

PI-326-01

Code No.: GUJ-DRUGS/G/28/1297

**Revised: 08/2024**

75104778 - 902951-02




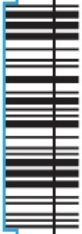
**PRINCIPAL DISPLAY PANEL - 5 mg**

**NDC 70700-326-50**

**Gallifrey (Norethindrone Acetate Tablets, USP, 5 mg)**

**Rx only**

**50 Tablets**

<p>Manufactured for: <b>Xiromed, LLC</b>, <b>Florham Park NJ 07932</b> Made in India GUJ-DRUGS/G/28/1297 Rev: 03/2024 326-50-00</p>  <p>3 70700 32650 3</p>	<p>Print Patient Information at: <a href="https://xiromed.com/PIL/Gallifrey.pdf">https://xiromed.com/PIL/Gallifrey.pdf</a> or Scan QR Code:</p> 	<p><b>NDC 70700-326-50</b></p> <p><b>Rx only</b></p> <p><b>Gallifrey™</b></p> <p>Norethindrone Acetate Tablets, USP</p> <p><b>5 mg</b>      <b>50 tablets</b></p> <p><b>ORALLY ACTIVE PROGESTIN</b></p> <p><b>PHARMACIST: Dispense the Patient Information Leaflet provided separately to each patient.</b></p> 	<p><b>Each tablet contains: Norethindrone Acetate, USP ... 5 mg</b></p> <p>Dispense in a tight, light-resistant container as defined in the USP using a child-resistant closure. Keep container tightly closed.</p> <p><b>Keep this and all medications out of reach of children.</b></p> <p><b>Usual Dosage:</b> See package insert for full prescribing information.</p> <p><b>Store at 20° to 25° C (68° to 77°F).</b> [See USP Controlled Room Temperature.]</p> <p><b>Protect from light.</b></p> <p>75104776 - 904527-01</p> 
--	---	--	--

Overcoding Area : 38 x 18 mm  
Unvarnished area with white background

**GALLIFREY**

norethindrone acetate tablet

**Product Information**

<b>Product Type</b>	HUMAN PRESCRIPTION DRUG	<b>Item Code (Source)</b>	NDC:70700-326
<b>Route of Administration</b>	ORAL		

**Active Ingredient/Active Moiety**

<b>Ingredient Name</b>	<b>Basis of Strength</b>	<b>Strength</b>
<b>NORETHINDRONE ACETATE</b> (UNII: 9S44LIC7OJ) (NORETHINDRONE - UNII:T18F433X4S)	NORETHINDRONE ACETATE	5 mg

**Inactive Ingredients**

<b>Ingredient Name</b>	<b>Strength</b>
<b>ANHYDROUS LACTOSE</b> (UNII: 3SY5LH9PMK)	
<b>LACTOSE MONOHYDRATE</b> (UNII: EWQ57Q8I5X)	
<b>MICROCRYSTALLINE CELLULOSE</b> (UNII: OP1R32D61U)	
<b>MAGNESIUM STEARATE</b> (UNII: 70097M6I30)	

**Product Characteristics**

<b>Color</b>	WHITE (White to off white)	<b>Score</b>	2 pieces
<b>Shape</b>	OVAL (flat faced beveled edge)	<b>Size</b>	6mm
<b>Flavor</b>		<b>Imprint Code</b>	257
<b>Contains</b>			

**Packaging**

#	Item Code	Package Description	Marketing Start Date	Marketing End Date
1	NDC:70700-326-50	50 in 1 BOTTLE; Type 0: Not a Combination Product	10/31/2024	

**Marketing Information**

<b>Marketing Category</b>	<b>Application Number or Monograph Citation</b>	<b>Marketing Start Date</b>	<b>Marketing End Date</b>
ANDA	ANDA205278	10/31/2024	

**Labeler** - Xiromed LLC (080228637)**Registrant** - Xiromed, LLC (080228637)