

PAIN RELIEF TINCTURE- camphor, menthol tincture
Henan Lingrui Pharmaceutical Co Ltd

Disclaimer: Most OTC drugs are not reviewed and approved by FDA, however they may be marketed if they comply with applicable regulations and policies. FDA has not evaluated whether this product complies.

Henan Lingrui Pharmaceutical Co Ltd

Active Ingredients

Camphor 5.0%

Menthol 1.3%

Purpose

Camphor External Analgesic

Menthol External Analgesic

Uses

For the temporary relief of minor aches and pains of muscles and joints due to:

simple backache

arthritis

strains

bruises

sprains

Warnings

For External Use Only.

Do not use

on wounds

on irritated or damaged skin

if the appearance of this product has changed

in excess of 12 hours

if you have known hypersensitive to this product

otherwise than as directed

ASK A DOCTOR OR PHARMACIST BEFORE USE IF YOU ARE

pregnant

taking other medications

WHEN USING THIS PRODUCT

avoid contact with the eye or mucous membranes

do not bandage tightly

supervise use by children

use caution if prone to allergic reactions

STOP USE AND ASK A DOCTOR IF

condition worsens

symptoms persist for more than 7 days

symptoms clear up and occur again within a few days

excessive irritation of the skin develops

when using for pain of arthritis

pain persists for more than 10 days

redness is present

in conditions affecting children under 12 years of age

Keep out of reach of children.

If swallowed, get medical help or contact a Poison Control Center right away.

Directions

Adults and children 12 years of age and older: Apply to affected area three times a day, 2 - 5ml each time, a course of 15 days.

Children 2 to 12 years of age and adults with compromised health: Use only under the guidance of a doctor.

Children under 2 years of age: Do not use, consult a doctor.

Refer to the above warnings: use otherwise than as directed may be dangerous.

Other Information

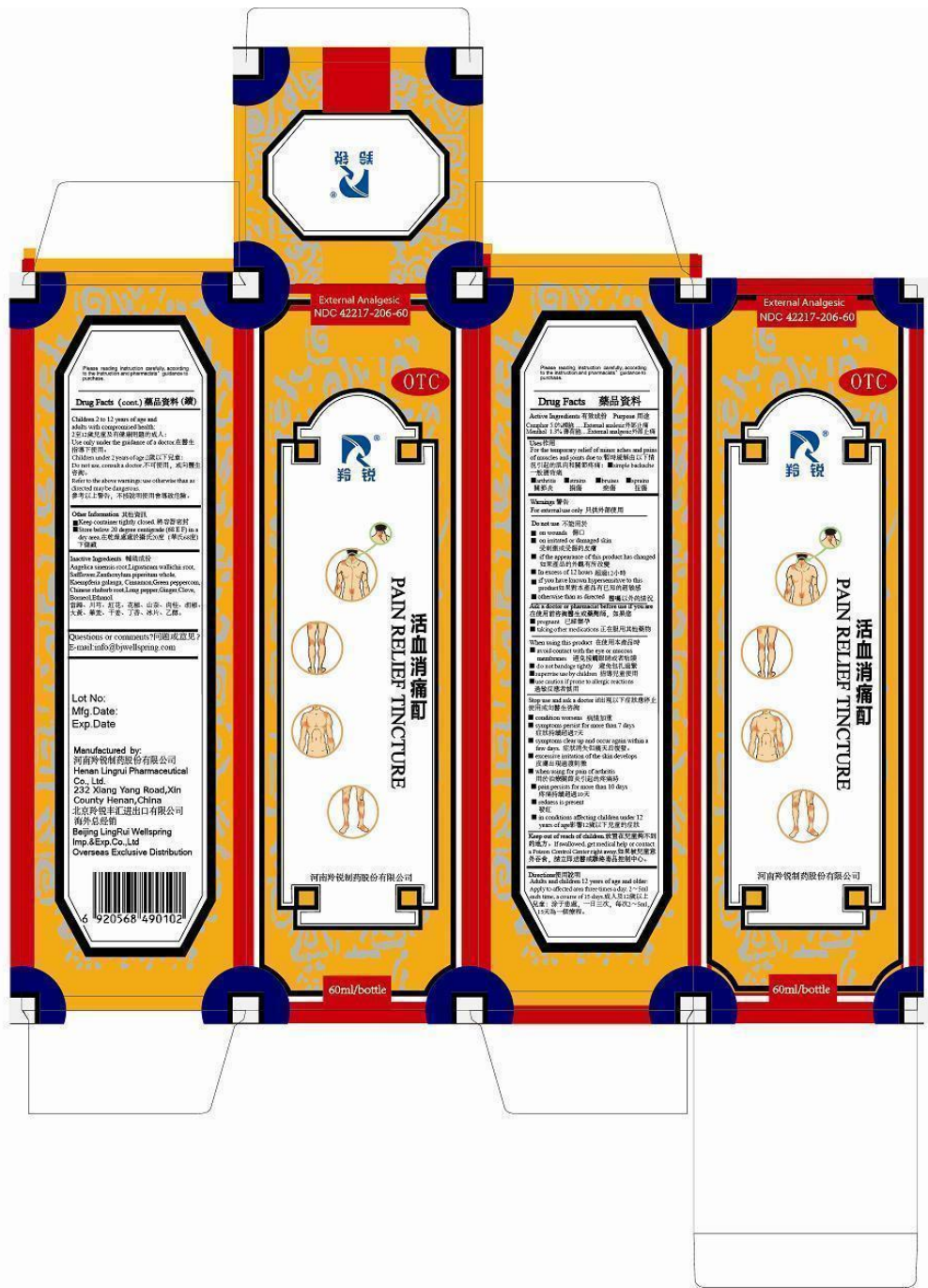
Keep container tightly closed.

Store below 20 ° (68 °) in a dry area.

Inactive Ingredients

ANGELICA SINENSIS ROOT, LIGUSTICUM WALLICHII ROOT, SAFFLOWER, ZANTHOXYLUM PIPERITUM WHOLE, KAEMPFERIA GALANGA WHOLE, CINNAMON, GREEN PEPPERCORN, CHINESE RHUBARB ROOT, LONG PEPPER, GINGER, CLOVE, BORNEOL, ETHANOL

Drug Facts



Questions or Comments?

E-mail: info@bjwellspring.com

Manufactured by

Henan Lingrui Pharmaceutical Co.; Ltd.
 232 Xiang Yang Road, Xin County, Henan, China
 Beijing Lingrui Wellspring Imp. & Exp. Co.; Ltd.
 Overseas Exclusive Distribution

PAIN RELIEF TINCTURE

camphor, menthol tincture

Product Information

Product Type	HUMAN OTC DRUG	Item Code (Source)	NDC:42217-206
Route of Administration	TOPICAL		

Active Ingredient/Active Moiety

Ingredient Name	Basis of Strength	Strength
CAMPHOR (SYNTHETIC) (UNII: 5TJD82A1ET) (CAMPHOR (SYNTHETIC) - UNII:5TJD82A1ET)	CAMPHOR (SYNTHETIC)	5.0 g in 100 mL
MENTHOL (UNII: L7T10EIP3A) (MENTHOL - UNII:L7T10EIP3A)	MENTHOL	1.3 g in 100 mL

Inactive Ingredients

Ingredient Name	Strength
ANGELICA SINENSIS ROOT (UNII: B66F4574UG)	
LIGUSTICUM WALLICHII ROOT (UNII: R81AD159QS)	
SAFFLOWER (UNII: 4VBL71TY4Y)	
ZANTHOXYLUM PIPERITUM WHOLE (UNII: Y8IKP41338)	
KAEMPFERIA GALANGA WHOLE (UNII: NU6Y8418BH)	
CINNAMON (UNII: 5S29HWU6QB)	
GREEN PEPPERCORN (UNII: 6G53L8ESRK)	
CHINESE RHUBARB ROOT (UNII: 5U759027OH)	
LONG PEPPER (UNII: 2NMG4EA7B1)	
GINGER (UNII: C5529G5JPQ)	
CLOVE (UNII: K48IKT5321)	
BORNEOL (UNII: M89NIB437X)	
ETHANOL, 2-(BIS(2-METHYLPROPYL)PHENOXY)- (UNII: AUK0O5KW1Y)	

Packaging

#	Item Code	Package Description	Marketing Start Date	Marketing End Date
1	NDC:42217-206-60	60 mL in 1 BOTTLE, PLASTIC		

Marketing Information

Marketing Category	Application Number or Monograph Citation	Marketing Start Date	Marketing End Date
OTC monograph not final	part348	06/02/2010	

Labeler - Henan Lingrui Pharmaceutical Co Ltd (530021062)**Registrant** - Henan Lingrui Pharmaceutical Co Ltd (530021062)**Establishment**

Name	Address	ID/FEI	Business Operations
-------------	----------------	---------------	----------------------------

Revised: 3/2015

Henan Lingrui Pharmaceutical Co Ltd