

SOLMEET DENTIDOCOR - rosin powder, dentifrice
Solbin Co., Ltd

Disclaimer: This drug has not been found by FDA to be safe and effective, and this labeling has not been approved by FDA. For further information about unapproved drugs, [click here](#).

Drug Facts

Active Ingredient: Pine Tar

Inactive Ingredient: sodium chloride

for dental care

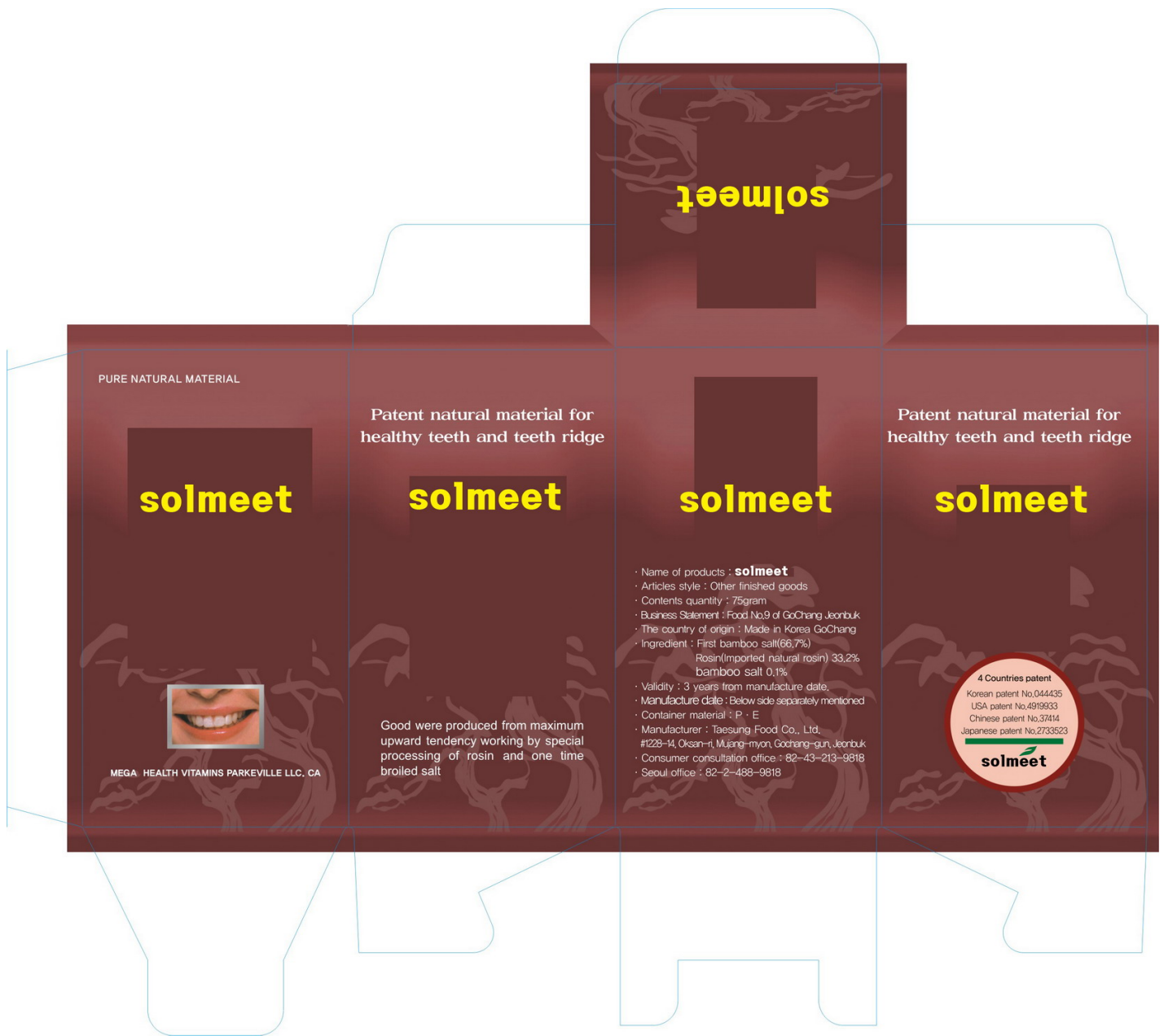
keep out of reach of the children

use when is needed

- do not swallow when using this product

- if more than used for rinsing is accidentally swallowed, get medical helps or contact a poison control center right away

Hold 1 grams in mouth for 1~2 minutes then rinse out with water



SOLMEET DENTI DOCTOR

rosin powder, dentifrice

Product Information

Product Type	HUMAN OTC DRUG	Item Code (Source)	NDC:42352-1001
Route of Administration	DENTAL		

Active Ingredient/Active Moiety

Ingredient Name	Basis of Strength	Strength
ROSIN (UNII: 88S87KL877) (ROSIN - UNII:88S87KL877)	ROSIN	0.332 g in 1 g

Inactive Ingredients

Ingredient Name		Strength		
SODIUM CHLORIDE (UNII: 451W47IQ8X)				
Packaging				
#	Item Code	Package Description	Marketing Start Date	Marketing End Date
1	NDC:42352-1001-1	25 g in 1 BOTTLE, PLASTIC		
Marketing Information				
Marketing Category	Application Number or Monograph Citation	Marketing Start Date	Marketing End Date	
unapproved drug other		12/11/2010		

Labeler - Solbin Co., Ltd (631099371)

Revised: 12/2010

Solbin Co., Ltd