

**ADVANCED CERAMIDE LIFT AND FIRM DAY CREAM BROAD SPECTRUM
SUNSCREEN SPF 15- octisalate, octocrylene, avobenzene,
homosalate emulsion
REVLON**

**Elizabeth Arden Advanced Ceramide Lift and Firm Day Cream
Broad-Spectrum Sunscreen SPF 15**

ACTIVE INGREDIENTS

AVOBENZONE 3.00%

HOMOSALATE 7.0%

OCTISALATE 4.5%

OCTOCRYLENE 8.0%

OTHER INGREDIENTS

WATER/AQUA/EAU, GLYCERIN, HEXYLENE GLYCOL, DIMETHICONE, C14-22 ALCOHOLS, PEG-100 STEARATE, GLYCERYL STEARATE, STYRENE/ACRYLATES COPOLYMER, ACRYLATES/DIMETHICONE COPOLYMER, POLYMETHYLSILSESQUIXANE, ACETYL TETRAPEPTIDE-11, ACETYL TETRAPEPTIDE-9, ACRYLATES/C10-30 ALKYL ACRYLATE CROSSPOLYMER, AMMONIUM HYDROXIDE, BUTYLENE GLYCOL, C12-20 ALKYL GLUCOSIDE, CAPRYLYL GLYCOL, CARBOMER, CERAMIDE AP, CERAMIDE EOP, CERAMIDE NP, CHOLESTEROL, DIMETHYL ISOSORBIDE, DISODIUM EDTA, ETHLYHEXYL PALMITATE, HYDROXYETHYL ACRYLATE/SODIUM ACRYLOYLDIMETHYL, TAURATE COPOLYMER, ISOHEXADECANE, LEONTOPODIUM ALPINUM CALLUS CULTURE EXTRACT, MARIS SAL/SEA SALT/SEL MARIN, PHYTOSPHINGOSINE, POLYSORBATE 20, POLYSORBATE 60, SILICA DIMETHYL SILYLATE, SODIUM CARRAGEENAN, SODIUM HYALURONATE, SODIUM LAUROYL LACTYLATE, TOCOPHERYL ACETATE, TROMETHAMINE, XANTHAM GUM, FRAGRANCE, CHLORPHENESIN, PHENOXYETHANOL.

USES

- Helps prevent sunburn
- if used as directed with other sun protection measures (see **Directions**), decreases the risk of skin cancer and early skin aging caused by the sun.

WARNINGS

- For external use only
- Do not use on damaged or broken skin
- When using this product keep out of eyes. Rinse with water to remove.
- Stop use and ask a doctor if rash occurs
- keep out of reach of children.

If product is swallowed, get medical help or contact a Poison Control Center right away.

DIRECTIONS

- Apply liberally 15 minutes before sun exposure
- Reapply:
 - at least every 2 hours
- **Sun Protection Measures.** Spending time in the sun increases your risk of skin cancer and early skin aging. To decrease this risk, regularly use a sunscreen with a broad spectrum SPF of 15 or higher and other sun protection measures including:
 - Limit time in the sun, especially from 10 a.m. - 2 p.m.
 - Wear long-sleeve shirts, pants, hats, and sunglasses
 - Use a water resistant sunscreen if swimming or sweating
 - Children under 6 months: Ask a doctor.

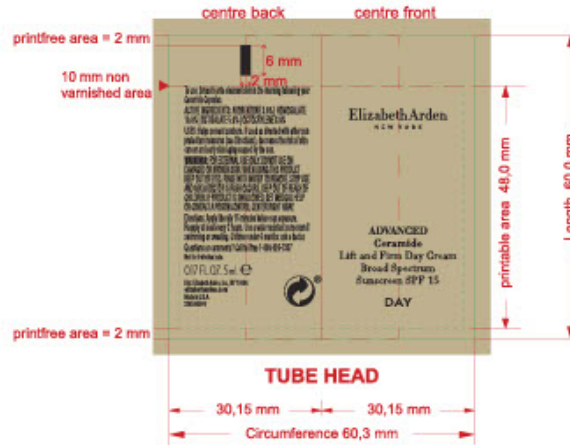
keep out of reach of children.

If product is swallowed, get medical help or contact a Poison Control Center right away.

Helps prevent sunburns. If used as directed with other sun protection measures (See Directions), decreases the risk of skin cancer and early skin aging caused by the sun.

CARTON ART

**ELIZABETH ARDEN ADVANCED CERAMIDE
LIFT AND FIRM DAY CREAM SPF 15
5 ML SAMPLE TUBE — US**
A0128512
60.3 mm W x 60.0 mm H



ALBÉA Albea Deutschland GmbH
Bamberger Straße 25
D-96110 Scheßlitz

Customer-Information

Printing area for:	Silkscreen Silkscreen / Pixel PT (combination)	Plastic tube:	19 x 60 mm
Information: - in the circumference of the eyemark only one-colour fulltone printable for readability of spot (contrast depending on your filling machines) - standard eyemark size depends on the diameter: 13,5 - 19 = 2 x 6 mm 22 - 35 = 3 x 7 mm 40 - 60 = 4 x 8 mm		- eyemark position could vary; will be attached on centre back side - minimum barcode size for a 100 % Code (BC 2): EAN 13 / UPC A: 38,3 mm EAN 8: 27,8 mm - Overlap for fullprint area, lines etc: 1,5 mm	

- SUBSTRATE IS GOLD POLYFOIL TUBE**
- ALL COPY, SYMBOLS, EYEMARK AND UPC CODE: 100% BLACK**
- RED RULES REPRESENT MEASUREMENTS: DO NOT PRINT**
- GREEN RULES REPRESENT LIVE AREA & DIELINE: DO NOT PRINT**

 FINAL ART RELEASE 03/02/2021	COMPONENTS	MARKETS
CAMPAIGN: ADVANCED CERAMIDE LIFT AND FIRM LAUNCH ARTIST: AG JOB TITLE: ADVANCED CERAMIDE LIFT AND FIRM DAY CREAM SPF 15, 5 ML SAMPLE VARIANT: US Formula No./MLI: COMPONENT: TUBE COMP#: 2245345000 FG No.: A0128512 DIMENSIONS: 60.3 mm W X 60.0 mm H DIE (SUP/NO.): FILE NAME: 2245345000_EA_AdvCera_LF_DCSPF_5ml_Tube_US_03-02-2021_FIN	<input checked="" type="checkbox"/> PRIMARY <input type="checkbox"/> LABEL <input type="checkbox"/> CARD <input checked="" type="checkbox"/> TUBE <input type="checkbox"/> CARTON <input type="checkbox"/> INSERT <input type="checkbox"/> HANGTAG <input checked="" type="checkbox"/> FILL = COMPONENTS INCLUDED IN SET	<input checked="" type="checkbox"/> US <input type="checkbox"/> CANADA <input type="checkbox"/> WORLDWIDE <input type="checkbox"/> ASIA <input type="checkbox"/> APO <input type="checkbox"/> EU <input type="checkbox"/> LATAM <input checked="" type="checkbox"/> FILL = MARKET REGIONS

ADVANCED CERAMIDE LIFT AND FIRM DAY CREAM BROAD SPECTRUM SUNSCREEN SPF 15

octisalate, octocrylene, avobenzone, homosalate emulsion

Product Information

Product Type	HUMAN OTC DRUG	Item Code (Source)	NDC:10967-707
Route of Administration	TOPICAL		

Active Ingredient/Active Moiety

Ingredient Name	Basis of Strength	Strength
HOMOSALATE (UNII: V06SV4M95S) (HOMOSALATE - UNII:V06SV4M95S)	HOMOSALATE	70 mg in 1 g
OCTOCRYLENE (UNII: 5A68WGF6WM) (OCTOCRYLENE - UNII:5A68WGF6WM)	OCTOCRYLENE	80 mg in 1 g
AVOBENZONE (UNII: G63QQF2NOX) (AVOBENZONE - UNII:G63QQF2NOX)	AVOBENZONE	30 mg in 1 g
OCTISALATE (UNII: 4X49Y0596W) (OCTISALATE - UNII:4X49Y0596W)	OCTISALATE	45 mg in 1 g

Inactive Ingredients

Ingredient Name	Strength
ACRYLATES/C10-30 ALKYL ACRYLATE CROSSPOLYMER (60000 MPA.S) (UNII: 8Z5ZAL5H3V)	
PENTYLENE GLYCOL (UNII: 50C1307PZG)	
HYALURONATE SODIUM (UNII: YSE9PPT4TH)	
POLYMETHYLSILSESQUIOXANE (4.5 MICRONS) (UNII: 59Z907ZB69)	
ACETYL TETRAPEPTIDE-9 (UNII: VMO8OOD3V0)	
LEONTOPODIUM NIVALE SUBSP. ALPINUM WHOLE (UNII: 99S85B4VEB)	
HEXYLENE GLYCOL (UNII: KEH0A3F75J)	
ACETYL TETRAPEPTIDE-11 (UNII: 0R3VC3BV8I)	
ETHYLHEXYL PALMITATE (UNII: 2865993309)	
CERAMIDE NP (UNII: 4370DF050B)	
TROMETHAMINE (UNII: 023C2WHX2V)	
CAPRYLYL GLYCOL (UNII: 00YIU5438U)	
CHOLESTEROL (UNII: 97C5T2UQ7J)	
WATER (UNII: 059QF0KO0R)	
GLYCERIN (UNII: PDC6A3C0OX)	
PEG-100 STEARATE (UNII: YD01N1999R)	
EDETATE DISODIUM ANHYDROUS (UNII: 8NLQ36F6MM)	
BUTYLENE GLYCOL (UNII: 3XUS85KORA)	
PHYTOSPHINGOSINE (UNII: GIN46U9Q2Q)	
XANTHAN GUM (UNII: TTV12P4NEE)	
PHENOXYETHANOL (UNII: HIE492ZZ3T)	
CARBOMER HOMOPOLYMER, UNSPECIFIED TYPE (UNII: 0A5MM307FC)	
CHLORPHENESIN (UNII: I670DAL4SZ)	
POLYSORBATE 60 (UNII: CAL22UVI4M)	
POLYSORBATE 20 (UNII: 7T1F30V5YH)	
CERAMIDE AP (UNII: F1X8L2B00J)	
STYRENE/ACRYLAMIDE COPOLYMER (MW 500000) (UNII: 5Z4DPO246A)	
GLYCERYL MONOSTEARATE (UNII: 230OU9XXE4)	
C12-20 ALKYL GLUCOSIDE (UNII: K67N5Z1RUA)	
DIMETHYL ISOSORBIDE (UNII: SA6A6V432S)	
SILICA DIMETHYL SILYLATE (UNII: EU2PSP0G0W)	

C14-22 ALCOHOLS (UNII: B1K89384RJ)

HYDROXYETHYL ACRYLATE/SODIUM ACRYLOYLDIMETHYL TAURATE COPOLYMER (45000 MPA.S AT 1%) (UNII: 86FQE96TZ4)

ISOHEXADECANE (UNII: 918X1OUF1E)

SODIUM LAUROYL LACTYLATE (UNII: 7243K85WFO)

CERAMIDE 1 (UNII: 5THT33P7X7)

ALPHA-TOCOPHEROL ACETATE (UNII: 9E8X80D2L0)

CARRAGEENAN SODIUM (UNII: 7CY8BVL34N)

SEA SALT (UNII: 87GE52P74G)

Packaging

#	Item Code	Package Description	Marketing Start Date	Marketing End Date
1	NDC:10967-707-61	15 g in 1 TUBE; Type 0: Not a Combination Product	01/01/2025	
2	NDC:10967-707-64	5 g in 1 TUBE; Type 0: Not a Combination Product	01/01/2025	
3	NDC:10967-707-17	50 g in 1 JAR; Type 0: Not a Combination Product	01/01/2025	
4	NDC:10967-707-60	2 g in 1 PACKET; Type 0: Not a Combination Product	01/01/2025	

Marketing Information

Marketing Category	Application Number or Monograph Citation	Marketing Start Date	Marketing End Date
OTC Monograph Drug	M020	01/01/2025	

Labeler - REVLON (788820165)

Registrant - REVLON (788820165)

Establishment

Name	Address	ID/FEI	Business Operations
Beautyge S.L.		472062523	manufacture(10967-707)

Revised: 12/2024

REVLON