

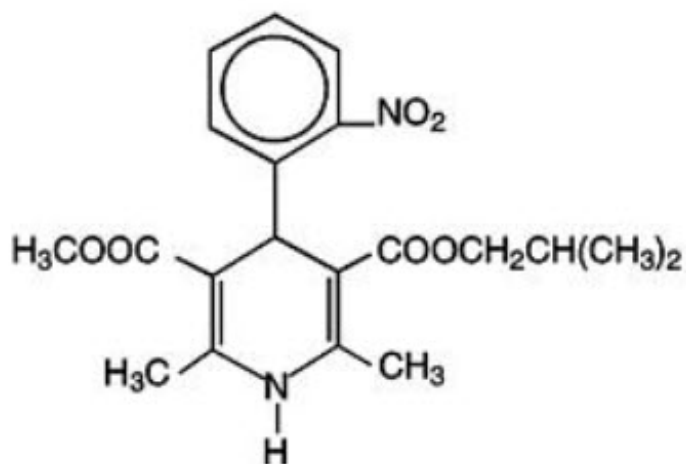
# **NISOLDIPINE- nisoldipine tablet, film coated, extended release** **Utopic Pharmaceuticals Inc**

## **Nisoldipine Extended-Release Tablets**

### **For Oral Use**

### **DESCRIPTION**

Nisoldipine Extended-Release Tablets are an extended release tablet dosage form of the dihydropyridine calcium channel blocker nisoldipine. Nisoldipine is 3,5-pyridinedicarboxylic acid, 1,4-dihydro-2,6-dimethyl-4-(2-nitrophenyl)-, methyl 2-methylpropyl ester, C<sub>20</sub>H<sub>24</sub>N<sub>2</sub>O<sub>6</sub>, and has the structural formula:



Nisoldipine is a yellow crystalline substance, practically insoluble in water but soluble in ethanol. It has a molecular weight of 388.4. Nisoldipine Extended-Release Tablets are film-coated monolithic tablets containing a hydrogel which provides for the controlled release of the drug. Nisoldipine Extended-Release Tablets contain 8.5 mg of nisoldipine for once-a-day oral administration.

Inactive ingredients in the formulation include: colloidal silicon dioxide, hypromellose, lactose monohydrate, magnesium stearate and sodium lauryl sulfate. Inactive ingredients in the film coating include: FD&C blue no. 2 aluminum lake, glyceryl mono and dicaprylocaprate, polyethylene glycol polyvinyl alcohol graft copolymer, polyvinyl alcohol, talc, titanium dioxide and yellow iron oxide.

### **CLINICAL PHARMACOLOGY**

#### **Mechanism of Action**

Nisoldipine is a member of the dihydropyridine class of calcium channel antagonists (calcium ion antagonists or slow channel blockers) that inhibit the transmembrane influx of calcium into vascular smooth muscle and cardiac muscle. It reversibly competes with other dihydropyridines for binding to the calcium channel. Because the contractile process of vascular smooth muscle is dependent upon the movement of extracellular

calcium into the muscle through specific ion channels, inhibition of the calcium channel results in dilation of the arterioles. *In vitro* studies show that the effects of nisoldipine on contractile processes are selective, with greater potency on vascular smooth muscle than on cardiac muscle. Although, like other dihydropyridine calcium channel blockers, nisoldipine has negative inotropic effects *in vitro*, studies conducted in intact anesthetized animals have shown that the vasodilating effect occurs at doses lower than those that affect cardiac contractility.

The effect of nisoldipine on blood pressure is principally a consequence of a dose-related decrease of peripheral vascular resistance. While nisoldipine, like other dihydropyridines, exhibits a mild diuretic effect, most of the antihypertensive activity is attributed to its effect on peripheral vascular resistance.

## Pharmacokinetics and Metabolism

Nisoldipine pharmacokinetics are independent of the dose across the clinical dosage range of 17 to 51 mg, with plasma concentrations proportional to dose. Nisoldipine accumulation, during multiple dosing, is predictable from a single dose. Nisoldipine is relatively well absorbed into the systemic circulation with 87% of the radiolabeled drug recovered in urine and feces. The absolute bioavailability of nisoldipine is about 5%. Nisoldipine's low bioavailability is due, in part, to pre-systemic metabolism in the gut wall, and this metabolism decreases from the proximal to the distal parts of the intestine. A pronounced food-effect is observed when nisoldipine extended-release tablets are administered with a high-fat meal resulting in an increased peak concentration ( $C_{max}$ ) of up to 245%. Total exposure (AUC) is decreased by 25%. As a result, nisoldipine extended-release tablets should be taken on an empty stomach (1 hour before or 2 hours after a meal).

Maximal plasma concentrations of nisoldipine are reached at  $9.2 \pm 5.1$  hours. The terminal elimination half-life (reflecting post absorption clearance of nisoldipine) ranges from  $13.7 \pm 4.3$  hours. After oral administration, the concentration of (+)-nisoldipine, the active enantiomer, is about 6 times higher than the inactive (-)-nisoldipine enantiomer. The plasma protein binding of nisoldipine is very high, with less than 1% unbound over the plasma concentration range of 100 ng/mL to 10 mcg/mL.

Nisoldipine is highly metabolized; 5 major urinary metabolites have been identified. Although 60 to 80% of an oral dose undergoes urinary excretion, only traces of unchanged nisoldipine are found in urine. The major biotransformation pathway appears to be the hydroxylation of the isobutyl ester. A hydroxylated derivative of the side chain, present in plasma at concentrations approximately equal to the parent compound, appears to be the only active metabolite, and has about 10% of the activity of the parent compound. Cytochrome P450 enzymes are believed to play a major role in the metabolism of nisoldipine. The particular isoenzyme system responsible for its metabolism has not been identified, but other dihydropyridines are metabolized by cytochrome P450 IIIA4. Nisoldipine should not be administered with grapefruit juice, as this has been shown, in a study of 12 subjects, to interfere with nisoldipine metabolism, resulting in a mean increase in  $C_{max}$  of about 3-fold (ranging up to about 7-fold) and AUC of almost 2-fold (ranging up to about 5-fold). A similar phenomenon has been seen with several other dihydropyridine calcium channel blockers.

## Special Populations

## Renal Dysfunction

Because renal elimination is not an important pathway, bioavailability and pharmacokinetics of nisoldipine extended-release tablets were not significantly different in patients with various degrees of renal impairment. Dosing adjustments in patients with mild to moderate renal impairment are not necessary.

## Geriatric

Elderly patients have been found to have 2 to 3 fold higher plasma concentrations ( $C_{max}$  and AUC) than young subjects. This should be reflected in more cautious dosing (see *DOSAGE AND ADMINISTRATION*).

## Hepatic Insufficiency

In patients with liver cirrhosis given a dose bioequivalent to 8.5 mg nisoldipine extended-release tablets, plasma concentrations of the parent compound were 4 to 5 times higher than those in healthy young subjects. Lower starting and maintenance doses should be used in cirrhotic patients (see *DOSAGE AND ADMINISTRATION*).

## Gender and Race

The effect of gender or race on the pharmacokinetics of nisoldipine has not been investigated.

## Disease States

Hypertension does not significantly alter the pharmacokinetics of nisoldipine.

## **Pharmacodynamics**

### Hemodynamic Effects

Administration of a single dose of nisoldipine leads to decreased systemic vascular resistance and blood pressure with a transient increase in heart rate. The change in heart rate is greater with immediate release nisoldipine preparations. The effect on blood pressure is directly related to the initial degree of elevation above normal. Chronic administration of nisoldipine results in a sustained decrease in vascular resistance and small increases in stroke index and left ventricular ejection fraction. A study of the immediate release formulation showed no effect of nisoldipine on the renin-angiotensin-aldosterone system or on plasma norepinephrine concentration in normals. Changes in blood pressure in hypertensive patients given nisoldipine extended-release tablets were dose related over the clinical dosage range.

Nisoldipine does not appear to have significant negative inotropic activity in intact animals or humans, and did not lead to worsening of clinical heart failure in three small studies of patients with asymptomatic and symptomatic left ventricular dysfunction. There is little information, however, in patients with severe congestive heart failure, and all calcium channel blockers should be used with caution in any patient with heart failure.

### Electrophysiologic Effects

Nisoldipine has no clinically important chronotropic effects. Except for mild shortening of sinus cycle, SA conduction time and AH intervals, single oral doses up to 20 mg of immediate release nisoldipine did not significantly change other conduction parameters. Similar electrophysiologic effects were seen with single IV doses, which could be blunted in patients pre-treated with beta-blockers. Dose and plasma level related flattening of

inversion of T-waves have been observed in a few small studies. Such reports were concentrated in patients receiving rapidly increased high doses in one study; the phenomenon has not been a cause of safety concern in large clinical trials.

### **Clinical Studies in Hypertension**

The antihypertensive efficacy of nisoldipine extended-release tablets was studied in 5 double-blind, placebo-controlled, randomized studies, in which over 600 patients were treated with nisoldipine extended-release tablets as monotherapy and about 300 with placebo; 4 of the five studies compared 2 or 3 fixed doses while the fifth allowed titration from doses bioequivalent to 8.5 to 34 mg. Once daily administration of nisoldipine extended-release tablets produced sustained reductions in systolic and diastolic blood pressures over the 24 hour dosing interval in both supine and standing positions. The mean placebo-subtracted reductions in supine systolic and diastolic blood pressure at trough, 24 hours post-dose, in these studies, are shown below. Changes in standing blood pressure were similar:

#### **Mean Supine Trough Systolic and Diastolic Blood Pressure Changes (mm Hg)**

<b>Nisoldipine Extended-Release Tablets</b>					
<b>Doses bioequivalent to: (mg/day)</b>	<b>8.5 mg</b>	<b>17 mg</b>	<b>25.5 mg</b>	<b>34 mg</b>	<b>8.5 to 34 mg titrated</b>
Systolic	8	11	11	14	15
Diastolic	3	5	7	7	8

In patients receiving atenolol, supine blood pressure reductions with nisoldipine extended-release tablets at doses bioequivalent to 17 and 34 mg once daily were 12/6 and 19/8 mm Hg, respectively. The sustained antihypertensive effect of nisoldipine extended-release tablets was demonstrated by 24 hour blood pressure monitoring and examination of peak and trough effects. The trough/peak ratios ranged from 70 to 100% for diastolic and systolic blood pressure. The mean change in heart rate in these studies was less than one beat per minute. In 4 of the 5 studies, patients received initial doses bioequivalent to 17 to 25.5 mg nisoldipine extended-release tablets without incident (excessive effects on blood pressure or heart rate). The fifth study started patients on lower doses of nisoldipine extended-release tablets.

Patient race and gender did not influence the blood pressure lowering effect of nisoldipine extended-release tablets. Despite the higher plasma concentration of nisoldipine in the elderly, there was no consistent difference in their blood pressure response except that the lowest clinical dose was somewhat more effective than in non-elderly patients. No postural effect on blood pressure was apparent and there was no evidence of tolerance to the antihypertensive effect of nisoldipine extended-release tablets in patients treated for up to one year.

### **INDICATIONS AND USAGE**

Nisoldipine extended-release tablets are indicated for the treatment of hypertension. It may be used alone or in combination with other antihypertensive agents.

## **CONTRAINDICATIONS**

Nisoldipine extended-release tablets are contraindicated in patients with known hypersensitivity to dihydropyridine calcium channel blockers.

## **WARNINGS**

### Increased angina and/or myocardial infarction in patients with coronary artery disease:

Rarely, patients, particularly those with severe obstructive coronary artery disease, have developed increased frequency, duration and/or severity of angina, or acute myocardial infarction on starting calcium channel blocker therapy or at the time of dosage increase. The mechanism of this effect has not been established. In controlled studies of nisoldipine extended-release tablets in patients with angina this was seen about 1.5% of the time in patients given nisoldipine, compared with 0.9% in patients given placebo.

## **PRECAUTIONS**

### **General**

#### Hypotension

Because nisoldipine, like other vasodilators, decreases peripheral vascular resistance, careful monitoring of blood pressure during the initial administration and titration of nisoldipine extended-release tablets is recommended. Close observation is especially important for patients already taking medications that are known to lower blood pressure. Although in most patients the hypotensive effect of nisoldipine extended-release tablets is modest and well tolerated, occasional patients have had excessive and poorly tolerated hypotension. These responses have usually occurred during initial titration or at the time of subsequent upward dosage adjustment.

#### Congestive Heart Failure

Although acute hemodynamic studies of nisoldipine in patients with NYHA Class II-IV heart failure have not demonstrated negative inotropic effects, safety of nisoldipine extended-release tablets in patients with heart failure has not been established. Caution therefore should be exercised when using nisoldipine extended-release tablets in patients with heart failure or compromised ventricular function, particularly in combination with a beta-blocker.

#### Patients with Hepatic Impairment

Because nisoldipine is extensively metabolized by the liver and, in patients with cirrhosis, it reaches blood concentrations about 5 times those in normals, nisoldipine extended-release tablets should be administered cautiously in patients with severe hepatic dysfunction (see *DOSAGE AND ADMINISTRATION*).

### **Information for Patients**

Nisoldipine extended-release tablets are an extended release tablet and should be swallowed whole. Tablets should not be chewed, divided or crushed. Nisoldipine

extended-release tablets should be taken on an empty stomach (1 hour before or 2 hours after a meal). Grapefruit juice, which has been shown to increase significantly the bioavailability of nisoldipine and other dihydropyridine type calcium channel blockers, should not be taken with nisoldipine extended-release tablets.

## Laboratory Tests

Nisoldipine extended-release tablets are not known to interfere with the interpretation of laboratory tests.

## Drug Interactions

A 30 to 45% increase in AUC and  $C_{max}$  of nisoldipine was observed with concomitant administration of cimetidine 400 mg twice daily. Ranitidine 150 mg twice daily did not interact significantly with nisoldipine (AUC was decreased by 15 to 20%). No pharmacodynamic effects of either histamine H<sub>2</sub> receptor antagonist were observed.

### CYP3A4 inhibitors and inducers

Nisoldipine is substrate of CYP3A4 and coadministration of nisoldipine extended-release tablets with any known inducer or inhibitor of CYP3A4 should be avoided in general.

Coadministration of phenytoin with a dose bioequivalent to 34 mg nisoldipine extended-release tablets in epileptic patients lowered the nisoldipine plasma concentrations to undetectable levels. Coadministration of nisoldipine extended-release tablets with phenytoin should be avoided and alternative antihypertensive therapy should be considered. Pharmacokinetic interactions between nisoldipine and beta-blockers (atenolol, propranolol) were variable and not significant. Propranolol attenuated the heart rate increase following administration of immediate release nisoldipine. The blood pressure effect of nisoldipine extended-release tablets tended to be greater in patients on atenolol than in patients on no other antihypertensive therapy. Quinidine at 648 mg bid decreased the bioavailability (AUC) of nisoldipine by 26%, but not the peak concentration. Immediate release nisoldipine increased plasma quinidine concentrations by about 20%. This interaction was not accompanied by ECG changes and its clinical significance is not known. No significant interactions were found between nisoldipine and warfarin or digoxin.

## Carcinogenesis, Mutagenesis, Impairment of Fertility

Dietary administration of nisoldipine to male and female rats for up to 24 months (mean doses up to 82 and 111 mg/kg/day, 16 and 19 times the maximum recommended human dose [MRHD] on a mg/m<sup>2</sup> basis, respectively) and female mice for up to 21 months (mean doses of up to 217 mg/kg/day, 20 times the MRHD on a mg/m<sup>2</sup> basis) revealed no evidence of tumorigenic effect of nisoldipine. In male mice receiving a mean dose of 163 mg nisoldipine/kg/day (16 times the MRHD of 60 mg/day on a mg/m<sup>2</sup> basis), an increased frequency of stomach papilloma, but still within the historical range, was observed. No evidence of stomach neoplasia was observed at lower doses (up to 58 mg/kg/day). Nisoldipine was negative when tested in a battery of genotoxicity assays including the Ames test and the CHO/HGRPT assay for mutagenicity and the *in vivo* mouse micronucleus test and *in vitro* CHO cell test for clastogenicity.

When administered to male and female rats at doses of up to 30 mg/kg/day (about 5 times the MRHD on a mg/m<sup>2</sup> basis) nisoldipine had no effect on fertility.

## **Pregnancy Category C**

Nisoldipine was neither teratogenic nor fetotoxic at doses that were not maternally toxic. Nisoldipine was fetotoxic but not teratogenic in rats and rabbits at doses resulting in maternal toxicity (reduced maternal body weight gain). In pregnant rats, increased fetal resorption (postimplantation loss) was observed at 100 mg/kg/day and decreased fetal weight was observed at both 30 and 100 mg/kg/day. These doses are, respectively, about 5 and 16 times the MRHD when compared on a mg/m<sup>2</sup> basis. In pregnant rabbits, decreased fetal and placental weights were observed at a dose of 30 mg/kg/day, about 10 times the MRHD when compared on a mg/m<sup>2</sup> basis. In a study in which pregnant monkeys (both treated and control) had high rates of abortion and mortality, the only surviving fetus from a group exposed to a maternal dose of 100 mg nisoldipine/kg/day (about 30 times the MRHD when compared on a mg/m<sup>2</sup> basis) presented with forelimb and vertebral abnormalities not previously seen in control monkeys of the same strain. There are no adequate and well controlled studies in pregnant women. Nisoldipine extended-release tablets should be used in pregnancy only if the potential benefit justifies the potential risk to the fetus.

## **Nursing Mothers**

It is not known whether nisoldipine is excreted in human milk. Because many drugs are excreted in human milk, a decision should be made to discontinue nursing, or to discontinue nisoldipine extended-release tablets, taking into account the importance of the drug to the mother.

## **Pediatric Use**

Safety and effectiveness in pediatric patients have not been established.

## **Geriatric Use**

Clinical studies of nisoldipine did not include sufficient numbers of subjects aged 65 and over to determine whether they respond differently from younger subjects. Other reported clinical experience has not identified differences in responses between the elderly and younger patients. Patients over 65 are expected to develop higher plasma concentrations of nisoldipine. In general, dose selection for an elderly patient should be cautious, usually starting at the low end of the dosing range, reflecting the greater frequency of decreased hepatic, renal or cardiac function, and of concomitant disease or other drug therapy.

## **ADVERSE EXPERIENCES**

More than 6,000 patients world-wide have received nisoldipine in clinical trials for the treatment of hypertension, either as the immediate release or the nisoldipine extended release formulation. Of about 1,500 patients who received nisoldipine extended-release tablets in hypertension studies, about 55% were exposed for at least 2 months and about one third were exposed for over 6 months, the great majority at doses equivalent to 17 mg and above.

Nisoldipine extended-release tablets are generally well-tolerated. In the U.S. clinical trials of nisoldipine extended-release tablets in hypertension, 10.9% of the 921 nisoldipine extended-release tablets patients discontinued treatment due to adverse events

compared with 2.9% of 280 placebo patients. The frequency of discontinuations due to adverse experiences was related to dose, with a 5.4% and 10.9% discontinuation rate at the lowest and highest daily dose, respectively.

The most frequently occurring adverse experiences with nisoldipine extended-release tablets are those related to its vasodilator properties; these are generally mild and only occasionally lead to patient withdrawal from treatment. The table below, from U.S. placebo-controlled parallel dose response trials of nisoldipine extended-release tablets using doses across the clinical dosage range in patients with hypertension, lists all of the adverse events, regardless of the causal relationship to nisoldipine extended-release tablets, for which the overall incidence on nisoldipine extended-release tablets was both >1% and greater with nisoldipine extended-release tablets than with placebo.

<b>Adverse Event</b>	<b>Nisoldipine (%) (n=663)</b>	<b>Placebo (%) (n=280)</b>
Peripheral Edema	22	10
Headache	22	15
Dizziness	5	4
Pharyngitis	5	4
Vasodilation	4	2
Sinusitis	3	2
Palpitation	3	1
Chest Pain	2	1
Nausea	2	1
Rash	2	1

Only peripheral edema and possibly dizziness appear to be dose related.

<b>Adverse Event</b>	<b>Nisoldipine Extended-Release Tablets, Dose Bioequivalent to:</b>				
	<b>Placebo</b>	<b>8.5mg</b>	<b>17mg</b>	<b>25.5mg</b>	<b>34mg</b>
(Rates in %)	N=280	N=30	N=170	N=105	N=139
Peripheral Edema	10	7	15	20	27
Dizziness	4	7	3	3	4

The common adverse events occurred at about the same rate in men as in women, and at a similar rate in patients over age 65 as in those under that age, except that headache was much less common in older patients. Except for peripheral edema and vasodilation, which were more common in whites, adverse event rates were similar in blacks and whites.

The following adverse events occurred in ≤1% of all patients treated for hypertension in U.S. and foreign clinical trials, or with unspecified incidence in other studies. Although a causal relationship of nisoldipine extended-release tablets to these events cannot be established, they are listed to alert the physician to a possible relationship with



nisoldipine extended-release tablets treatment.

Body As A Whole: cellulitis, chills, facial edema, fever, flu syndrome, malaise

Cardiovascular: atrial fibrillation, cerebrovascular accident, congestive heart failure, first degree AV block, hypertension, hypotension, jugular venous distension, migraine, myocardial infarction, postural hypotension, ventricular extrasystoles, supraventricular tachycardia, syncope, systolic ejection murmur, T wave abnormalities on ECG (flattening, inversion, nonspecific changes), venous insufficiency

Digestive: abnormal liver function tests, anorexia, colitis, diarrhea, dry mouth, dyspepsia, dysphagia, flatulence, gastritis, gastrointestinal hemorrhage, gingival hyperplasia, glossitis, hepatomegaly, increased appetite, melena, mouth ulceration

Endocrine: diabetes mellitus, thyroiditis

Hemic and Lymphatic: anemia, ecchymoses, leukopenia, petechiae

Metabolic and Nutritional: gout, hypokalemia, increased serum creatine kinase, increased nonprotein nitrogen, weight gain, weight loss

Musculoskeletal: arthralgia, arthritis, leg cramps, myalgia, myasthenia, myositis, tenosynovitis

Nervous: abnormal dreams, abnormal thinking and confusion, amnesia, anxiety, ataxia, cerebral ischemia, decreased libido, depression, hypesthesia, hypertonia, insomnia, nervousness, paresthesia, somnolence, tremor, vertigo

Respiratory: asthma, dyspnea, end inspiratory wheeze and fine rales, epistaxis, increased cough, laryngitis, pharyngitis, pleural effusion, rhinitis, sinusitis

Skin and Appendages: acne, alopecia, dry skin, exfoliative dermatitis, fungal dermatitis, herpes simplex, herpes zoster, maculopapular rash, pruritus, pustular rash, skin discoloration, skin ulcer, sweating, urticaria

Special Senses: abnormal vision, amblyopia, blepharitis, conjunctivitis, ear pain, glaucoma, itchy eyes, keratoconjunctivitis, otitis media, retinal detachment, tinnitus, watery eyes, taste disturbance, temporary unilateral loss of vision, vitreous floater

Urogenital: dysuria, hematuria, impotence, nocturia, urinary frequency, increased BUN and serum creatinine, vaginal hemorrhage, vaginitis

The following postmarketing event has been reported very rarely in patients receiving nisoldipine extended-release tablets: systemic hypersensitivity reaction which may include one or more of the following; angioedema, shortness of breath, tachycardia, chest tightness, hypotension, and rash. A definite causal relationship with nisoldipine extended-release tablets has not been established. An unusual event observed with immediate release nisoldipine but not observed with nisoldipine extended-release tablets was one case of photosensitivity. Gynecomastia has been associated with the use of calcium channel blockers.

## **OVERDOSAGE**

There is no experience with nisoldipine overdosage. Generally, overdosage with other dihydropyridines leading to pronounced hypotension calls for active cardiovascular support including monitoring of cardiovascular and respiratory function, elevation of

extremities, judicious use of calcium infusion, pressor agents and fluids. Clearance of nisoldipine would be expected to be slowed in patients with impaired liver function. Since nisoldipine is highly protein bound, dialysis is not likely to be of any benefit; however, plasmapheresis may be beneficial.

## **DOSAGE AND ADMINISTRATION**

The dosage of nisoldipine extended-release tablets must be adjusted to each patient's needs. Therapy usually should be initiated with 17 mg orally once daily, then increased by 8.5 mg per week or longer intervals, to attain adequate control of blood pressure. Usual maintenance dosage is 17 to 34 mg once daily. Blood pressure response increases over the 8.5 to 34 mg daily dose range but adverse event rates also increase. Doses beyond 34 mg once daily are not recommended. Nisoldipine extended-release tablets have been used safely with diuretics, ACE inhibitors, and beta-blocking agents. Patients over age 65, or patients with impaired liver function, are expected to develop higher plasma concentrations of nisoldipine. Their blood pressure should be monitored closely during any dosage adjustment. A starting dose not exceeding 8.5 mg daily is recommended in these patient groups. Nisoldipine extended-release tablets should be administered orally once daily. Nisoldipine extended-release tablets should be taken on an empty stomach (1 hour before or 2 hours after a meal). Grapefruit products should be avoided before and after dosing. Nisoldipine extended-release tablets are an extended release dosage form and tablets should be swallowed whole, not bitten, divided or crushed.

## **HOW SUPPLIED**

Nisoldipine Extended-Release Tablets are supplied as 8.5 mg, yellow film coated round tablets, debossed with "A" and "133" on one side and plain on the other side.

- NDC 84063-001-04, bottles of 100 tablets with child-resistant closure.

Protect from light and moisture. Store at 20° to 25°C (68° to 77°F); excursions permitted to 15° to 30°C (59° to 86°F) [See USP Controlled Room Temperature].

Dispense in a tight, light-resistant container as defined in the USP with a child-resistant closure.

Keep out of the reach of children.

### **Rx only**

#### **Manufactured by:**

Yichang Humanwell Oral Solid Dosage Plant  
Yichang, Hubei, China 443001

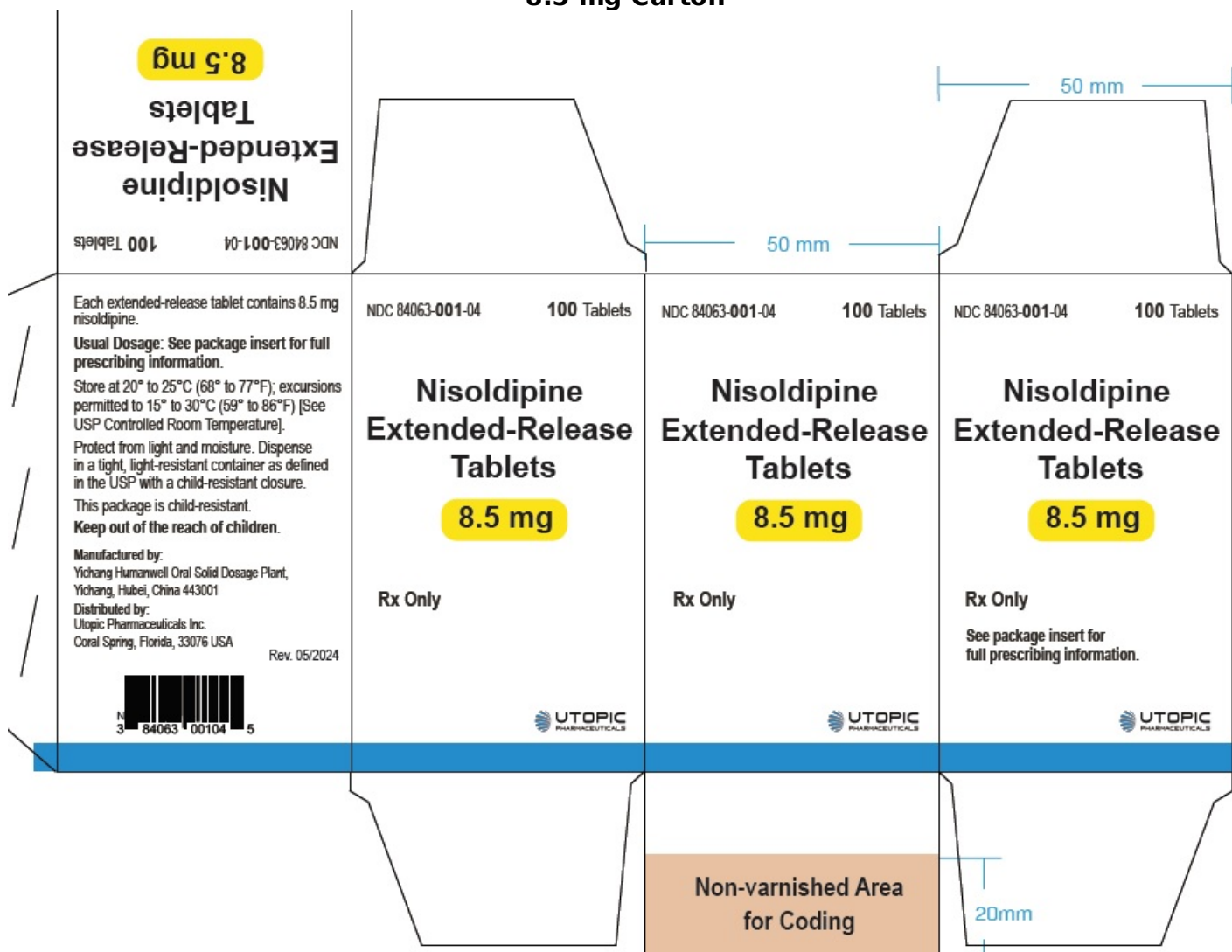
#### **Distributed by:**

Utopic Pharmaceuticals Inc.  
Coral Spring, Florida, 33076 USA

Rev. 05/2024

## **PRINCIPAL DISPLAY PANEL - 8.5 mg Carton**

## 8.5 mg Carton



**100 Tablets**

**Nisoldipine Extended-Release Tablets**

**8.5 mg**

Rx only

Each extended-release tablet contains 8.5 mg nisoldipine.

**Usual Dosage: See package insert for full prescribing information.**

Store at 20° to 25°C (68° to 77°F); excursions permitted to 15° to 30°C (59° to 86°F) [See USP Controlled Room Temperature].

Protect from light and moisture. Dispense in a tight, light-resistant container as defined in the USP with a child-resistant closure.

This package is child-resistant.

**Keep out of the reach of children.**

**See package insert for full prescribing information.**

**Manufactured by:**

Yichang Humanwell Oral Solid Dosage Plant,

Yichang, Hubei, China 443001

**Distributed by:**

Utopic Pharmaceuticals Inc.  
Coral Spring, Florida, 33076 USA

**NISOLDIPINE**

nisoldipine tablet, film coated, extended release

**Product Information**

<b>Product Type</b>	HUMAN PRESCRIPTION DRUG	<b>Item Code (Source)</b>	NDC:84063-001
<b>Route of Administration</b>	ORAL		

**Active Ingredient/Active Moiety**

Ingredient Name	Basis of Strength	Strength
<b>NISOLDIPINE</b> (UNII: 4I8HAB65SZ) (NISOLDIPINE - UNII:4I8HAB65SZ)	NISOLDIPINE	8.5 mg

**Inactive Ingredients**

Ingredient Name	Strength
<b>SILICON DIOXIDE</b> (UNII: ETJ7Z6XBU4)	
<b>HYPROMELLOSE 2208 (4000 MPA.S)</b> (UNII: 39J80LT57T)	
<b>HYPROMELLOSE 2208 (100 MPA.S)</b> (UNII: B1QE5P712K)	
<b>LACTOSE MONOHYDRATE</b> (UNII: EWQ57Q8I5X)	
<b>MAGNESIUM STEARATE</b> (UNII: 70097M6I30)	
<b>SODIUM LAURYL SULFATE</b> (UNII: 368GB5141J)	
<b>FD&amp;C BLUE NO. 2--ALUMINUM LAKE</b> (UNII: 4AQJ3LG584)	
<b>GLYCERYL MONO AND DICAPRYLOCAPRATE</b> (UNII: U72Q2I8C85)	
<b>POLYVINYL ALCOHOL GRAFT POLYETHYLENE GLYCOL COPOLYMER (3:1; 45000 MW)</b> (UNII: 23ZQ42JZZH)	
<b>POLYVINYL ALCOHOL, UNSPECIFIED</b> (UNII: 532B59J990)	
<b>TALC</b> (UNII: 7SEV7J4R1U)	
<b>TITANIUM DIOXIDE</b> (UNII: 15FIX9V2JP)	
<b>FERRIC OXIDE YELLOW</b> (UNII: EX438O2MRT)	

**Product Characteristics**

<b>Color</b>	yellow	<b>Score</b>	no score
<b>Shape</b>	ROUND	<b>Size</b>	8mm
<b>Flavor</b>		<b>Imprint Code</b>	A;133
<b>Contains</b>			

**Packaging**

#	Item Code	Package Description	Marketing Start Date	Marketing End Date
---	-----------	---------------------	----------------------	--------------------

1	NDC:84063-001-04	1 in 1 CARTON	05/23/2024	
1		100 in 1 BOTTLE; Type 0: Not a Combination Product		

## Marketing Information

Marketing Category	Application Number or Monograph Citation	Marketing Start Date	Marketing End Date
ANDA	ANDA216606	05/23/2024	

**Labeler** - Utopic Pharmaceuticals Inc (119189453)

**Registrant** - Yichang Humanwell Pharmaceutical Co., Ltd (527225336)

## Establishment

Name	Address	ID/FEI	Business Operations
Yichang Humanwell Oral Solid Dosage Plant		421371958	manufacture(84063-001)

Revised: 5/2024

Utopic Pharmaceuticals Inc