

RAMOSU ALOE VERA LEAF EXTRACT 100- aloe barbadensis leaf liquid
RaMoSu

Disclaimer: This drug has not been found by FDA to be safe and effective, and this labeling has not been approved by FDA. For further information about unapproved drugs, click here.

Drug Facts

aloe vera leaf

water

for skin protectant

keep out of reach of the children

apply proper amount to the skin

1. Do not use in the following cases(Eczema and scalp wounds)

2.Side Effects

1)Due to the use of this druf if rash, irritation, itching and symptopms of hypersnesitivity occur dicontinue use and consult your phamacisr or doctor

3.General Precautions

1)If in contact with the eyes, wash out thoroughly with water If the symptoms are servere, seek medical advice immediately

2)This product is for exeternal use only. Do not use for internal use

4.Storage and handling precautions

1)If possible, avoid direct sunlight and store in cool and area of low humidity

2)In order to maintain the quality of the product and avoid misuse

3)Avoid placing the product near fire and store out in reach of children

for external use only





NATURAL ORIGINATED 100%

⊕ Pure extracts skincare ⊕ All-over treatment



Aloe Vera Leaf Extract is the best skin calming and moisturizer, obtained from the nature.



Ramosu Aloe Vera Leaf Extract 100 3 ampoules in set



RAMOSU Co., Ltd. 19 Jeonpo-daero22Beon-gil, Busanjin-gu, Busan, KOREA
+82-70-4617-1004 | www.ramosu.com | MADE IN KOREA

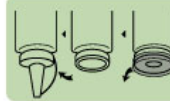
Capacity | 10mlx3

1. Stop using the product in case of the following abnormalities and consult your skin specialist to avoid aggravation by continuous use.
 2. In case of having a red spot, swelling, itching or irritation while in use of the product.
 3. Storage and caution for handling
 4. When using the product for the first time, check skin abnormally after applying the product to small area.
 5. Keep in a place avoiding high or low temperature of infants and children.
 6. Tightly close the cap after use.
 7. Do not use on the part of wound, eczema or dermatitis.
 8. Storage and caution for handling
 9. Keep in a place avoiding high or low temperature of infants and children.
 10. Tightly close the cap after use.
 11. Do not use on the part of wound, eczema or dermatitis.
 12. Storage and caution for handling
 13. Keep in a place avoiding high or low temperature of infants and children.
 14. Tightly close the cap after use.
 15. Do not use on the part of wound, eczema or dermatitis.

Ingredients | Aloe Vera Leaf Extract

How To Use | After washing your face, gently pat your face with the ampoule at the first step of your skin care routine. You can also use it as a mist. Provides long-lasting suppleness by replenishing it with moisture. Aloe vera is also called 'miracle plant' or nature's gift, since moisture-rich aloe lowers the skin temperature by taking heat from the skin, relieves dry skin and

⊕ Ramosu | Aloe Vera Leaf Extract 100



① 사용 방법
 ② 사용 후 주의사항
 ③ 보관 방법
 ④ 기타 사항

제조업체: Ramosu Co., Ltd. (한국) | 주소: 부산광역시 중구 동대문로22번길 19 19 19

8885-7479 | Ramosu Co., Ltd. | 부산광역시 중구 동대문로22번길 19 19 19

본 제품은 100% 천연 원료로 제조된 순수 아로에 베라 잎 추출물입니다.

용량 | 10mlx3

본 제품은 아로에 베라 잎 추출물 100%를 함유하고 있으며, 피부 진정 및 보습 효과를 제공합니다.

사용 방법 | 1. 얼굴을 깨끗이 씻고, 아로에 베라 잎 추출물을 얇게 펴 바릅니다.

2. 건조된 피부에 아로에 베라 잎 추출물을 덧바릅니다.

3. 건조된 피부에 아로에 베라 잎 추출물을 덧바릅니다.

4. 건조된 피부에 아로에 베라 잎 추출물을 덧바릅니다.

5. 건조된 피부에 아로에 베라 잎 추출물을 덧바릅니다.

6. 건조된 피부에 아로에 베라 잎 추출물을 덧바릅니다.

7. 건조된 피부에 아로에 베라 잎 추출물을 덧바릅니다.

8. 건조된 피부에 아로에 베라 잎 추출물을 덧바릅니다.

9. 건조된 피부에 아로에 베라 잎 추출물을 덧바릅니다.

10. 건조된 피부에 아로에 베라 잎 추출물을 덧바릅니다.

11. 건조된 피부에 아로에 베라 잎 추출물을 덧바릅니다.

12. 건조된 피부에 아로에 베라 잎 추출물을 덧바릅니다.

13. 건조된 피부에 아로에 베라 잎 추출물을 덧바릅니다.

14. 건조된 피부에 아로에 베라 잎 추출물을 덧바릅니다.

15. 건조된 피부에 아로에 베라 잎 추출물을 덧바릅니다.

16. 건조된 피부에 아로에 베라 잎 추출물을 덧바릅니다.

17. 건조된 피부에 아로에 베라 잎 추출물을 덧바릅니다.

18. 건조된 피부에 아로에 베라 잎 추출물을 덧바릅니다.

19. 건조된 피부에 아로에 베라 잎 추출물을 덧바릅니다.

20. 건조된 피부에 아로에 베라 잎 추출물을 덧바릅니다.

RAMOSU ALOE VERA LEAF EXTRACT 100

aloe barbadensis leaf liquid

Product Information

Product Type	HUMAN OTC DRUG	Item Code (Source)	NDC:70465-0001
Route of Administration	TOPICAL		

Active Ingredient/Active Moiety

Ingredient Name	Basis of Strength	Strength
ALOE VERA LEAF (UNII: ZY81Z83H0X) (ALOE VERA LEAF - UNII:ZY81Z83H0X)	ALOE VERA LEAF	100 g in 100 mL

Inactive Ingredients

Ingredient Name	Strength
WATER (UNII: 059QF0KO0R)	

Packaging

#	Item Code	Package Description	Marketing Start Date	Marketing End Date
1	NDC:70465-0001-1	10 mL in 1 BOTTLE; Type 0: Not a Combination Product		

Marketing Information

Marketing Category	Application Number or Monograph Citation	Marketing Start Date	Marketing End Date
unapproved drug other		02/04/2016	

Labeler - RaMoSu (689055324)**Registrant** - RaMoSu (689055324)**Establishment**

Name	Address	ID/FEI	Business Operations
RaMoSu		689055324	manufacture(70465-0001)

Revised: 2/2016

RaMoSu