

GUNA-IL 11- interleukin-11 solution/ drops

Guna spa

Disclaimer: This homeopathic product has not been evaluated by the Food and Drug Administration for safety or efficacy. FDA is not aware of scientific evidence to support homeopathy as effective.

GUNA- IL 11

ACTIVE INGREDIENTS/PURPOSE

INTERLEUKIN-11 4C Overactive proinflammatory immune activity, Psoriasis and Skin inflammation symptoms

USES

USES: Overactive proinflammatory immune activity, Psoriasis and Skin inflammation symptoms

WARNINGS

Stop use and ask doctor if symptoms worsen or persist more than 5 days

PREGNANCY

If pregnant or breast-feeding ask a doctor before use

WARNINGS

Keep this and all medicines out of reach of children

DIRECTIONS

Take 15 minutes before meals.

Adults and children 12 years and older 20 drops twice a day in a little water. Hold in the mouth for about 30 seconds then swallow.

Children between 12 years and 6 years of age 10 drops twice a day in a little water. Hold in the mouth for about 30 seconds then swallow.

Children under 6 years 5 drops twice a day in a glass of water.

QUESTIONS

Questions?: info@gunainc.com

Tel. (484) 223-3500

Inactive ingredient: Ethyl alcohol 30%.

Take 15 minutes before meals.

keep this and all medicines out of children

PRINCIPAL DISPLAY PANEL

GUNA
biotherapeutics

GUNA® - IL 11
Homeopathic medicine

NDC 17089-389-18

GUNA
biotherapeutics

GUNA® - IL 11
Homeopathic medicine

Overactive Proinflammatory Immune Activity, Psoriasis and Skin Inflammation Symptoms

30 ml / 1.0 fl. oz.
Contains ethyl alcohol 30%

Manufactured by
GUNA® S.p.a. - Italy

GUNA
biotherapeutics

GUNA® Inc.
Whitehall - PA18052
www.gunainc.com

Drug Facts

Active Ingredients	Purpose
Interleukin 11 4C	Overactive Pro-inflammatory Immune Activity, Psoriasis and Skin Inflammation Symptoms

Uses: Overactive Proinflammatory Immune Activity, Psoriasis and Skin Inflammation Symptoms.

Warnings:
Stop use and ask doctor if symptoms worsen or persist more than 5 days. If **pregnant or breast-feeding** ask a doctor before use. **Keep this and all medicines** out of reach of children.

Directions: Take 15 minutes before meals.

Adults and children 12 years and older	20 drops twice a day in a little water. Hold in the mouth for about 30 seconds then swallow.
Children between 12 years and 6 years of age	10 drops twice a day in a little water. Hold in the mouth for about 30 seconds then swallow.
Children under 6 years	5 drops twice a day in a glass of water.

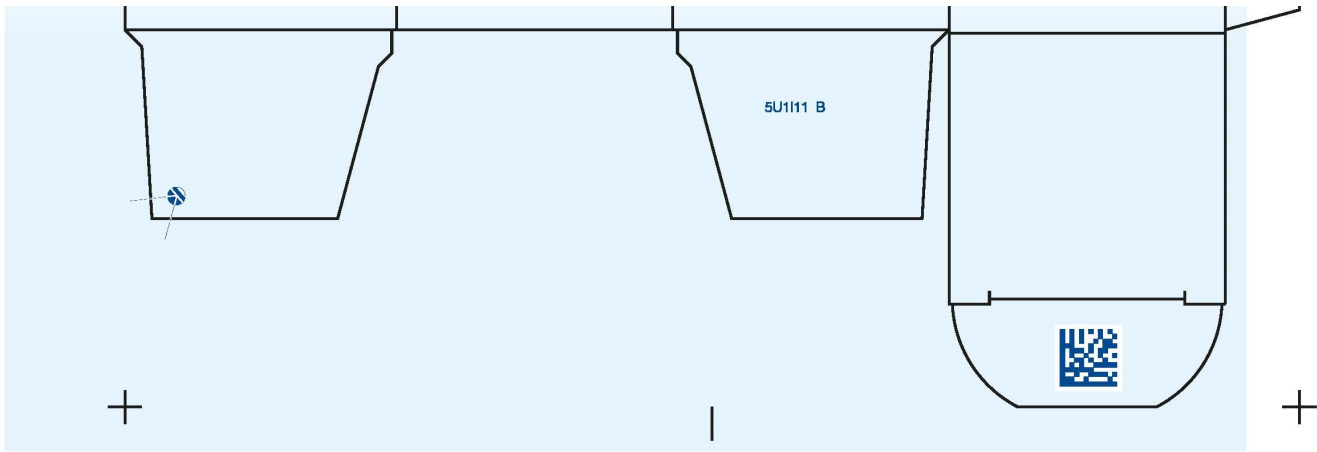
Drug Facts (continued)

Other information:
store at 20°-25° C (68°-77° F)

Inactive Ingredient: Ethyl alcohol 30%

Questions?: info@gunainc.com
tel. (484) 223-3500

Do not use if tamper-evident seal is broken



GUNA-IL 11

interleukin-11 solution/ drops

Product Information

Product Type	HUMAN OTC DRUG	Item Code (Source)	NDC:17089-389
Route of Administration	ORAL		

Active Ingredient/Active Moiety

Ingredient Name	Basis of Strength	Strength
INTERLEUKIN-11 (UNII: O14Q7A13PT) (INTERLEUKIN-11 - UNII:O14Q7A13PT)	INTERLEUKIN-11	4 [hp_C] in 30 mL

Inactive Ingredients

Ingredient Name	Strength
ALCOHOL (UNII: 3K9958V90M)	9 mL in 30 mL

Packaging

#	Item Code	Package Description	Marketing Start Date	Marketing End Date
1	NDC:17089-389-18	1 in 1 BOX	12/21/2018	
1		30 mL in 1 BOTTLE, DROPPER; Type 0: Not a Combination Product		

Marketing Information

Marketing Category	Application Number or Monograph Citation	Marketing Start Date	Marketing End Date
unapproved		06/17/2008	

homeopathic		06/17/2006	
-------------	--	------------	--

Labeler - Guna spa (430538264)

Establishment

Name	Address	ID/FEI	Business Operations
Guna spa		338587646	manufacture(17089-389)

Revised: 11/2022

Guna spa