

**TOP CARE EAR RELIEF EAR DROPS- chamomile, mercurius solubilis,
sulfur solution/ drops
Topco Associates LLC**

Disclaimer: This homeopathic product has not been evaluated by the Food and Drug Administration for safety or efficacy. FDA is not aware of scientific evidence to support homeopathy as effective.

Top Care Ear Relief Ear Drops

Drug Facts

Active ingredients

Chamomilla 10X

Mercurius solubilis 15X

Sulphur 12X

Purpose

sensitivity to drafts, soothing

fullness, sensitivity to cold

itchiness, sensitivity to water

The letters 'HPUS' indicate that the components in this product are officially monographed in the Homoeopathic Pharmacopoeia of the United States.

Uses

Helps relieve the sensation of fullness of the ear, sensitivity to water and drafts, and the annoyance of water-clogged ears by helping clear water trapped in the ear.

Warnings

Do not use

- in the eyes.
- Initial exacerbation may occur.

Ask a doctor before use if you have:

- ear drainage or discharge
- pain, irritation, or rash in the ear
- had ear surgery
- dizziness

Stop use and ask a doctor if:

- irritation (too much burning) or pain occurs
- symptoms persist for more than 48 hours

If pregnant or breast feeding,

ask a health professional before use.

Keep out of reach of children.

If swallowed get medical help or contact a Poison Control Center right away.

Directions

FOR USE IN THE EAR ONLY.

- Remove tamper-evident seal from neck of bottle.
- Twist cap off bottle.
- Tilt head sideways.
- Apply 4 to 5 drops in each affected ear (applicator should not enter ear canal).
- Keep drops in ear by keeping head tilted or placing cotton in ear.
- Use up to 4 times daily for no more than 48 hours, or as directed by a doctor.
- Children under 12 years of age consult a doctor.

Other information

- Active ingredients are manufactured according to homeopathic principles.
- Do not use if tamper-evident safety seal is missing or broken.

Inactive ingredient

Vegetable glycerin

Questions?

1-888-423-0139

Package Labeling:

Ear Relief Ear Drops



RETAIN CARTON FOR COMPLETE PRODUCT INFORMATION

Drug Facts

Active ingredients..... Purpose
 Chamomilla 10X..... sensitivity to drafts, soothing
 Mercurius solubilis 15X..... fullness, sensitivity to cold
 Sulphur 12X..... itchiness, sensitivity to water
 The letters "HPUS" indicate that the components in this product are officially monographed in the Homeopathic Pharmacopoeia of the United States.

Uses
 Helps relieve the sensation of fullness of the ear, sensitivity to water and drafts, and the annoyance of water-clogged ears by helping clear water trapped in the ear.

Warnings
 ■ Do not use in the eyes.
 ■ Initial exacerbation may occur.
Ask a doctor before use if you have:
 ■ ear drainage or discharge
 ■ pain, irritation, or rash in the ear
 ■ had ear surgery
 ■ dizziness

Stop use and ask a doctor if:
 ■ irritation (too much burning) or pain occurs
 ■ symptoms persist for more than 48 hours

If pregnant or breast feeding, ask a health professional before use.

Keep out of reach of children. If swallowed, get medical help or contact a Poison Control Center right away. ➔

REV. 8/19



This TopCare® product is laboratory tested to guarantee its highest quality. Your total satisfaction is guaranteed.



COMPARE TO SIMILASAN® EAR RELIEF ACTIVE INGREDIENTS*

COMPARE TO SIMILASAN® EAR RELIEF ACTIVE INGREDIENTS*

Ear Relief Ear Drops

CHAMOMILLA HPUS 10X
 MERCURIUS SOLUBILIS HPUS 15X
 SULPHUR HPUS 12X

- Ear Drying Aid
- Homeopathic Remedy
- Relieves the Symptoms of Clogged Ears



For Children & Adults

EAR DROPPER INCLUDED



Ear Relief Ear Drops

CHAMOMILLA HPUS 10X
 MERCURIUS SOLUBILIS HPUS 15X
 SULPHUR HPUS 12X

- Ear Drying Aid
- Homeopathic Remedy
- Relieves the Symptoms of Clogged Ears



For Children & Adults

EAR DROPPER INCLUDED



0.4 FL OZ (12mL)

0.4 FL OZ (12mL)



Drug Facts (continued)

Directions

FOR USE IN THE EAR ONLY.

- Remove tamper-evident seal from neck of bottle.
- Twist cap off bottle.
- Tilt head sideways.
- Apply 4 to 5 drops in each affected ear (applicator should not enter ear canal).
- Keep drops in ear by keeping head tilted or placing cotton in ear.
- Use up to 4 times daily for no more than 48 hours, or as directed by a doctor.
- Children under 12 years of age consult a doctor.

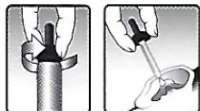
Other information

- Active ingredients are manufactured according to homeopathic principles.
- Do not use if tamper-evident safety seal is missing or broken.

Inactive ingredient

Vegetable glycerin

Questions? 1-888-423-0139



DISTRIBUTED BY TOPCO ASSOCIATES LLC
 ELK GROVE VILLAGE, IL 60007
 ©TOPCO BPHAD519
 QUESTIONS? 1-888-423-0139
 topcare@topco.com www.topcarebrand.com
 Visit here for more information:
<http://topbrnds.com/48zuuh>
 *This product is not affiliated with Similasan®.

TOP CARE EAR RELIEF EAR DROPS

chamomile, mercurius solubilis, sulfur solution/ drops

Product Information

Product Type	HUMAN OTC DRUG	Item Code (Source)	NDC:36800-846
Route of Administration	AURICULAR (OTIC)		

Active Ingredient/Active Moiety

Ingredient Name	Basis of Strength	Strength
CHAMOMILE (UNII: FGL3685T2X) (CHAMOMILE - UNII:FGL3685T2X)	CHAMOMILE	10 [hp_X] in 1 mL
MERCURIUS SOLUBILIS (UNII: 324Y4038G2) (MERCURIUS SOLUBILIS - UNII:324Y4038G2)	MERCURIUS SOLUBILIS	15 [hp_X] in 1 mL
SULFUR (UNII: 70FD1KFU70) (SULFUR - UNII:70FD1KFU70)	SULFUR	12 [hp_X] in 1 mL

Inactive Ingredients

Ingredient Name	Strength
GLYCERIN (UNII: PDC6A3C0OX)	

Packaging

#	Item Code	Package Description	Marketing Start Date	Marketing End Date
1	NDC:36800-846-07	1 in 1 BOX	07/01/2007	
1		12 mL in 1 BOTTLE; Type 0: Not a Combination Product		

Marketing Information

Marketing Category	Application Number or Monograph Citation	Marketing Start Date	Marketing End Date
unapproved homeopathic		07/01/2007	

Labeler - Topco Associates LLC (006935977)

Revised: 3/2021

Topco Associates LLC