

**CALCIUM POLYCARBOPHIL 625 MG- calcium polycarbophil 625 mg tablet**  
**Reliable 1 Laboratories LLC**

*Disclaimer: Most OTC drugs are not reviewed and approved by FDA, however they may be marketed if they comply with applicable regulations and policies. FDA has not evaluated whether this product complies.*

-----  
**Calcium Polycarbophil 625 mg**

**Drug Facts**

**Active ingredient (in each caplet)**

Calcium polycarbophil 625 mg  
(equivalent to polycarbophil 500 mg)

**Purpose**

Bulk-Forming Laxative

**Uses**

- relieves occasional constipation
- generally produces bowel movement in 12 to 72 hours

**Warnings**

**Choking:** Taking this product without adequate fluid may cause it to swell and block your throat or esophagus and may cause choking. Do not take this product if you have difficulty in swallowing. If you experience chest pain, vomiting, or difficulty in swallowing or breathing after taking this product, seek immediate medical attention.

**Do not use** longer than one week

**Ask a doctor before use if you have**

- abdominal pain, nausea, or vomiting
- noticed a sudden change in bowel habits that lasts over two weeks

**Ask a doctor or pharmacist before use if you are** taking any other drug. Take this product two or more hours before or after other drugs. Laxatives may affect how other drugs work.

**Stop use and ask a doctor if**

- you have rectal bleeding
- you fail to have a bowel movement after using this product

These could be signs of a serious condition.

**Keep out of reach of children.** In case of overdose, get medical help or contact a Poison Control Center right away.

**Drug Facts** continued on back of label

**Directions**

- take caplets with at least 8 ounces (a full glass) of water or other fluid. Taking this product without enough liquid may cause choking. See choking warning.
- take dose up to 4 times daily
- do not take more than 8 caplets in 24 hours
- **adults & children 12 years and over:** 2 caplets
- **children under 12 years:** ask a doctor

**Other information**

- **each caplet contains:** calcium 140 mg
- store at 15°-30°C (59°-86°F)
- do not refrigerate
- protect from humidity

**Inactive ingredients** carob powder, croscarmellose sodium, HPMC, magnesium stearate, microcrystalline cellulose, polyethylene glycol, silicon dioxide

**Questions or comments?** call **516-341-0666**,

8:30 am - 4:30 pm ET, Monday-Friday

**TAMPER EVIDENT: DO NOT USE IF IMPRINTED SAFETY SEAL UNDER CAP IS BROKEN OR MISSING**

\*Reliable 1 Laboratories LLC is not affiliated with the owner of the trademark FIBERCON®.

Distributed by: **Reliable 1 Laboratories LLC, Valley Stream, NY 11580**

**www.reliable1labs.com**

**NDC 69618-030-06**

**Calcium Polycarbophil 625mg**

**Bulk-Forming Laxative**

**90 Caplets**

\*Compare to Active Ingredient in FIBERCON®

NDC 69618-030-06



# Calcium Polycarbophil 625 mg BULK-FORMING LAXATIVE

60 CAPLETS

Compare to Active Ingredient in FIBERCON®

### Drug Facts

#### Active ingredient (in each caplet) Purpose

Calcium polycarbophil 625 mg (equivalent to polycarbophil 500 mg) .....Bulk-Forming Laxative

- Uses**
- relieves occasional constipation
  - generally produces bowel movement in 12 to 72 hours

#### Warnings

**Choking:** Taking this product without adequate fluid may cause 1 to swell and block your throat or esophagus and may cause choking. Do not take this product if you have difficulty in swallowing. If you experience chest pain, vomiting, or difficulty in swallowing or breathing after taking this product, seek immediate medical attention.

**Do not use longer than one week.**

#### Ask a doctor before use if you have

- abdominal pain, nausea, or vomiting
- noticed a sudden change in bowel habits that lasts over two weeks

**Ask a doctor or pharmacist before use if you are taking any other drug.** Take this product two or more hours before or after other drugs. Laxatives may affect how other drugs work.

#### Stop use and ask a doctor if

- you have rectal bleeding
- you fail to have a bowel movement after using this product. These could be signs of a serious condition.

**Keep out of reach of children.** In case of overdose, get medical help or contact a Poison Control Center right away.

**Drug Facts continued on back of label**  
**DANGER: EVIDENCE: DO NOT USE IF UNPRINTED SAFETY SEAL UNDER CAP IS BROKEN OR MISSING**

Reliable 1 Laboratories LLC is not affiliated with the owner of the trademark FIBERCON®.

Distributed by: Reliable 1 Laboratories LLC, Valley Stream, NY 11580  
[www.reliable1labs.com](http://www.reliable1labs.com)



Rev. 0815

Lot No.:  
 Exp. Date:  
 NIB  
 FOR MORE FACTS

### Drug Facts (continued)

#### Directions

- take caplets with at least 8 ounces (a full glass) of water or other fluid. Taking the product without enough liquid may cause choking. See choking warning.
- take dose up to 4 times daily
- do not take more than 8 caplets in 24 hours
- adults & children 12 years and over:** 2 caplets
- children under 12 years:** ask a doctor

#### Other information

- each caplet contains: calcium 140 mg
- store at 15°-30°C (59°-86°F)
- do not refrigerate
- protect from humidity

#### Inactive ingredients

calcic powder, croscarmellose sodium, HPMC, magnesium stearate, microcrystalline cellulose, polyethylene glycol, silicon dioxide

#### Questions or comments? call 516-341-0888,

8:30 am - 4:30 pm ET, Monday-Friday

## CALCIUM POLYCARBOPHIL 625 MG

calcium polycarbophil 625 mg tablet

### Product Information

<b>Product Type</b>	HUMAN OTC DRUG	<b>Item Code (Source)</b>	NDC:69618-030
<b>Route of Administration</b>	ORAL		

### Active Ingredient/Active Moiety

Ingredient Name	Basis of Strength	Strength
CALCIUM POLYCARBOPHIL (UNII: 8F049NKY49) (POLYCARBOPHIL - UNII:W25LM17A4W)	CALCIUM POLYCARBOPHIL	625 mg

### Inactive Ingredients

Ingredient Name	Strength
-----------------	----------

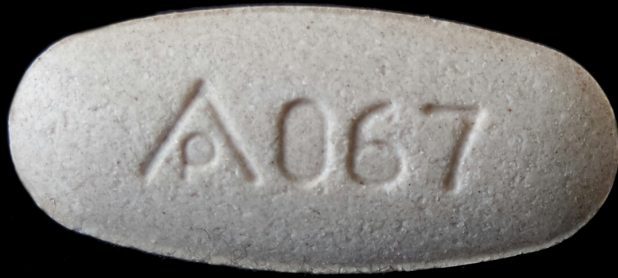
<b>CROSCARMELLOSE SODIUM</b> (UNII: M28OL1HH48)	
<b>MAGNESIUM STEARATE</b> (UNII: 70097M6I30)	
<b>HYPROMELLOSES</b> (UNII: 3NXW29V3WO)	
<b>CELLULOSE, MICROCRYSTALLINE</b> (UNII: OP1R32D61U)	
<b>CAROB</b> (UNII: 5MG5Z946UO)	
<b>SILICON DIOXIDE</b> (UNII: ETJ7Z6XBU4)	
<b>POLYETHYLENE GLYCOL 1000</b> (UNII: U076Q6Q621)	

### Product Characteristics

<b>Color</b>	white	<b>Score</b>	2 pieces
<b>Shape</b>	OVAL	<b>Size</b>	19mm
<b>Flavor</b>		<b>Imprint Code</b>	AP;067
<b>Contains</b>			

### Packaging

#	Item Code	Package Description	Marketing Start Date	Marketing End Date
1	NDC:69618-030-06	60 in 1 BOTTLE, PLASTIC; Type 0: Not a Combination Product	11/01/2015	
2	NDC:69618-030-09	90 in 1 BOTTLE, PLASTIC; Type 0: Not a Combination Product	11/01/2015	
3	NDC:69618-030-50	500 in 1 BOTTLE, PLASTIC; Type 0: Not a Combination Product	11/01/2015	



# Calcium Polycarbophil 625mg Tablets

## Marketing Information

Marketing Category	Application Number or Monograph Citation	Marketing Start Date	Marketing End Date
OTC monograph not final	part334	11/01/2015	

**Labeler** - Reliable 1 Laboratories LLC (079718111)

Revised: 10/2021

Reliable 1 Laboratories LLC