

CARVEDILOL- carvedilol tablet, film coated

NCS HealthCare of KY, LLC dba Vanguard Labs

HIGHLIGHTS OF PRESCRIBING INFORMATION

These highlights do not include all the information needed to use CARVEDILOL TABLETS safely and effectively. See full prescribing information for CARVEDILOL TABLETS.

CARVEDILOL tablets, for oral use

Initial U.S. Approval: 1995

INDICATIONS AND USAGE

Carvedilol tablets are an alpha/beta-adrenergic blocking agent indicated for the treatment of:

- mild to severe chronic heart failure (1.1)
- left ventricular dysfunction following myocardial infarction in clinically stable patients (1.2)
- hypertension (1.3)

DOSAGE AND ADMINISTRATION

Take with food. Individualize dosage and monitor during up-titration. (2)

- Heart failure: Start at 3.125 mg twice daily and increase to 6.25, 12.5, and then 25 mg twice daily over intervals of at least 2 weeks. Maintain lower doses if higher doses are not tolerated. (2.1)
- Left ventricular dysfunction following myocardial infarction: Start at 6.25 mg twice daily and increase to 12.5 mg then 25 mg twice daily after intervals of 3 to 10 days. A lower starting dose or slower titration may be used. (2.2)
- Hypertension: Start at 6.25 mg twice daily and increase if needed for blood pressure control to 12.5 mg then 25 mg twice daily over intervals of 1 to 2 weeks. (2.3)

DOSAGE FORMS AND STRENGTHS

Tablets: 3.125 mg, 6.25 mg, 12.5 mg, 25 mg (3)

CONTRAINDICATIONS

- Bronchial asthma or related bronchospastic conditions. (4)
- Second- or third-degree AV block. (4)
- Sick sinus syndrome. (4)
- Severe bradycardia (unless permanent pacemaker in place). (4)
- Patients in cardiogenic shock or decompensated heart failure requiring the use of IV inotropic therapy. (4)
- Severe hepatic impairment. (2.4, 4)
- History of serious hypersensitivity reaction (e.g., Stevens-Johnson syndrome, anaphylactic reaction, angioedema) to any component of this medication or other medications containing carvedilol. (4)

WARNINGS AND PRECAUTIONS

- Acute exacerbation of coronary artery disease upon cessation of therapy: Do not abruptly discontinue. (5.1)
- Bradycardia, hypotension, worsening heart failure/fluid retention may occur. Reduce the dose as needed. (5.2, 5.3, 5.4)
- Non-allergic bronchospasm (e.g., chronic bronchitis and emphysema): Avoid β -blockers. (4) However, if deemed necessary, use with caution and at lowest effective dose. (5.5)
- Diabetes: Monitor glucose as β -blockers may mask symptoms of hypoglycemia or worsen hyperglycemia. (5.6)

ADVERSE REACTIONS

Most common adverse events (6.1):

- Heart failure and left ventricular dysfunction following myocardial infarction ($\geq 10\%$): Dizziness, fatigue, hypotension, diarrhea, hyperglycemia, asthenia, bradycardia, weight increase.
- Hypertension ($\geq 5\%$): Dizziness.

To report SUSPECTED ADVERSE REACTIONS, contact TEVA USA, PHARMACOVIGILANCE at 1-888-838-2872 or FDA at 1-800-FDA-1088 or www.fda.gov/medwatch.

DRUG INTERACTIONS

- CYP P450 2D6 enzyme inhibitors may increase and rifampin may decrease carvedilol levels. (7.1, 7.5)
- Hypotensive agents (e.g., reserpine, MAO inhibitors, clonidine) may increase the risk of hypotension and/or severe bradycardia. (7.2)
- Cyclosporine or digoxin levels may increase. (7.3, 7.4)
- Both digitalis glycosides and β -blockers slow atrioventricular conduction and decrease heart rate. Concomitant use can increase the risk of bradycardia. (7.4)
- Amiodarone may increase carvedilol levels resulting in further slowing of the heart rate or cardiac conduction. (7.6)
- Verapamil- or diltiazem-type calcium channel blockers may affect ECG and/or blood pressure. (7.7)
- Insulin and oral hypoglycemics action may be enhanced. (7.8)

See 17 for PATIENT COUNSELING INFORMATION and FDA-approved patient labeling.

Revised: 8/2023

FULL PRESCRIBING INFORMATION: CONTENTS*

1 INDICATIONS AND USAGE

- 1.1 Heart Failure
- 1.2 Left Ventricular Dysfunction Following Myocardial Infarction
- 1.3 Hypertension

2 DOSAGE AND ADMINISTRATION

- 2.1 Heart Failure
- 2.2 Left Ventricular Dysfunction Following Myocardial Infarction
- 2.3 Hypertension
- 2.4 Hepatic Impairment

3 DOSAGE FORMS AND STRENGTHS

4 CONTRAINDICATIONS

5 WARNINGS AND PRECAUTIONS

- 5.1 Cessation of Therapy
- 5.2 Bradycardia
- 5.3 Hypotension
- 5.4 Heart Failure/Fluid Retention
- 5.5 Non-Allergic Bronchospasm
- 5.6 Glycemic Control in Type 2 Diabetes
- 5.7 Peripheral Vascular Disease
- 5.8 Deterioration of Renal Function
- 5.9 Major Surgery
- 5.10 Thyrotoxicosis
- 5.11 Pheochromocytoma
- 5.12 Prinzmetal's Variant Angina
- 5.13 Risk of Anaphylactic Reaction
- 5.14 Intraoperative Floppy Iris Syndrome

6 ADVERSE REACTIONS

- 6.1 Clinical Studies Experience
- 6.2 Postmarketing Experience

7 DRUG INTERACTIONS

- 7.1 CYP2D6 Inhibitors and Poor Metabolizers
- 7.2 Hypotensive Agents
- 7.3 Cyclosporine

- 7.4 Digitalis Glycosides
- 7.5 Inducers/Inhibitors of Hepatic Metabolism
- 7.6 Amiodarone
- 7.7 Calcium Channel Blockers
- 7.8 Insulin or Oral Hypoglycemics
- 7.9 Anesthesia

8 USE IN SPECIFIC POPULATIONS

- 8.1 Pregnancy
- 8.2 Lactation
- 8.4 Pediatric Use
- 8.5 Geriatric Use

10 OVERDOSAGE

11 DESCRIPTION

12 CLINICAL PHARMACOLOGY

- 12.1 Mechanism of Action
- 12.2 Pharmacodynamics
- 12.3 Pharmacokinetics
- 12.4 Specific Populations
- 12.5 Drug-Drug Interactions

13 NONCLINICAL TOXICOLOGY

- 13.1 Carcinogenesis, Mutagenesis, Impairment of Fertility

14 CLINICAL STUDIES

- 14.1 Heart Failure
- 14.2 Left Ventricular Dysfunction Following Myocardial Infarction
- 14.3 Hypertension
- 14.4 Hypertension With Type 2 Diabetes Mellitus

16 HOW SUPPLIED/STORAGE AND HANDLING

17 PATIENT COUNSELING INFORMATION

* Sections or subsections omitted from the full prescribing information are not listed.

FULL PRESCRIBING INFORMATION

1 INDICATIONS AND USAGE

1.1 Heart Failure

Carvedilol tablets are indicated for the treatment of mild-to-severe chronic heart failure of ischemic or cardiomyopathic origin, usually in addition to diuretics, ACE inhibitors, and digitalis, to increase survival and, also, to reduce the risk of hospitalization [see *Drug Interactions (7.4)*, *Clinical Studies (14.1)*].

1.2 Left Ventricular Dysfunction Following Myocardial Infarction

Carvedilol tablets are indicated to reduce cardiovascular mortality in clinically stable patients who have survived the acute phase of a myocardial infarction and have a left ventricular ejection fraction of less than or equal to 40% (with or without symptomatic heart failure) [see *Clinical Studies (14.2)*].

1.3 Hypertension

Carvedilol tablets are indicated for the management of essential hypertension [see *Clinical Studies (14.3, 14.4)*]. They can be used alone or in combination with other antihypertensive agents, especially thiazide-type diuretics [see *Drug Interactions (7.2)*].

2 DOSAGE AND ADMINISTRATION

Carvedilol tablets should be taken with food to slow the rate of absorption and reduce the incidence of orthostatic effects.

2.1 Heart Failure

DOSAGE MUST BE INDIVIDUALIZED AND CLOSELY MONITORED BY A PHYSICIAN DURING UP-TITRATION. Prior to initiation of carvedilol tablets, it is recommended that fluid retention be minimized. The recommended starting dose of carvedilol tablets is 3.125 mg twice daily for 2 weeks. If tolerated, patients may have their dose increased to 6.25, 12.5, and 25 mg twice daily over successive intervals of at least 2 weeks. Patients should be maintained on lower doses if higher doses are not tolerated. A maximum dose of 50 mg twice daily has been administered to patients with mild-to-moderate heart failure weighing over 85 kg (187 lbs).

Patients should be advised that initiation of treatment and (to a lesser extent) dosage increases may be associated with transient symptoms of dizziness or lightheadedness (and rarely syncope) within the first hour after dosing. During these periods, patients should avoid situations such as driving or hazardous tasks, where symptoms could result in injury. Vasodilatory symptoms often do not require treatment, but it may be useful to separate the time of dosing of carvedilol tablets from that of the ACE inhibitor or to reduce temporarily the dose of the ACE inhibitor. The dose of carvedilol tablets should not be increased until symptoms of worsening heart failure or vasodilation have been stabilized.

Fluid retention (with or without transient worsening heart failure symptoms) should be treated by an increase in the dose of diuretics.

The dose of carvedilol tablets should be reduced if patients experience bradycardia (heart rate less than 55 beats per minute).

Episodes of dizziness or fluid retention during initiation of carvedilol tablets can generally be managed without discontinuation of treatment and do not preclude subsequent successful titration of, or a favorable response to, carvedilol.

2.2 Left Ventricular Dysfunction Following Myocardial Infarction

DOSAGE MUST BE INDIVIDUALIZED AND MONITORED DURING UP-TITRATION. Treatment with carvedilol tablets may be started as an inpatient or outpatient and should be started after the patient is hemodynamically stable and fluid retention has been minimized. It is recommended that carvedilol tablets be started at 6.25 mg twice daily and increased after 3 to 10 days, based on tolerability, to 12.5 mg twice daily, then again to the target dose of 25 mg twice daily. A lower starting dose may be used (3.125 mg twice daily) and/or the rate of up-titration may be slowed if clinically indicated (e.g., due to low blood pressure or heart rate, or fluid retention). Patients should be maintained on

lower doses if higher doses are not tolerated. The recommended dosing regimen need not be altered in patients who received treatment with an IV or oral β -blocker during the acute phase of the myocardial infarction.

2.3 Hypertension

DOSAGE MUST BE INDIVIDUALIZED. The recommended starting dose of carvedilol tablets is 6.25 mg twice daily. If this dose is tolerated, using standing systolic pressure measured about 1 hour after dosing as a guide, the dose should be maintained for 7 to 14 days, and then increased to 12.5 mg twice daily if needed, based on trough blood pressure, again using standing systolic pressure 1 hour after dosing as a guide for tolerance. This dose should also be maintained for 7 to 14 days and can then be adjusted upward to 25 mg twice daily if tolerated and needed. The full antihypertensive effect of carvedilol tablets is seen within 7 to 14 days. Total daily dose should not exceed 50 mg.

Concomitant administration with a diuretic can be expected to produce additive effects and exaggerate the orthostatic component of carvedilol action.

2.4 Hepatic Impairment

Carvedilol tablets should not be given to patients with severe hepatic impairment [see *Contraindications (4)*].

3 DOSAGE FORMS AND STRENGTHS

The white, elliptical-shaped, film-coated tablets are available in the following strengths:

- 3.125 mg – debossed with "TV" and "51"
- 6.25 mg – debossed with "TV" and "135"
- 12.5 mg – debossed with "TV" and "7295"
- 25 mg – debossed with "TV" and "7296"

4 CONTRAINDICATIONS

Carvedilol tablets are contraindicated in the following conditions:

- Bronchial asthma or related bronchospastic conditions. Deaths from status asthmaticus have been reported following single doses of carvedilol tablets.
- Second- or third-degree AV block.
- Sick sinus syndrome.
- Severe bradycardia (unless a permanent pacemaker is in place).
- Patients with cardiogenic shock or who have decompensated heart failure requiring the use of intravenous inotropic therapy. Such patients should first be weaned from intravenous therapy before initiating carvedilol tablets.
- Patients with severe hepatic impairment.
- Patients with a history of a serious hypersensitivity reaction (e.g., Stevens-Johnson syndrome, anaphylactic reaction, angioedema) to any component of this medication or other medications containing carvedilol.

5 WARNINGS AND PRECAUTIONS

5.1 Cessation of Therapy

Patients with coronary artery disease, who are being treated with carvedilol, should be advised against abrupt discontinuation of therapy. Severe exacerbation of angina and the occurrence of myocardial infarction and ventricular arrhythmias have been reported in patients with angina following the abrupt discontinuation of therapy with β -blockers. The last 2 complications may occur with or without preceding exacerbation of the angina pectoris. As with other β -blockers, when discontinuation of carvedilol is planned, the patients should be carefully observed and advised to limit physical activity to a minimum. Carvedilol should be discontinued over 1 to 2 weeks whenever possible. If the angina worsens or acute coronary insufficiency develops, it is recommended that carvedilol be promptly reinstated, at least temporarily. Because coronary artery disease is common and may be unrecognized, it may be prudent not to discontinue therapy with carvedilol abruptly even in patients treated only for hypertension or heart failure.

5.2 Bradycardia

In clinical trials, carvedilol caused bradycardia in about 2% of hypertensive subjects, 9% of subjects with heart failure, and 6.5% of subjects with myocardial infarction and left ventricular dysfunction. If pulse rate drops below 55 beats per minute, the dosage should be reduced.

5.3 Hypotension

In clinical trials of primarily mild-to-moderate heart failure, hypotension and postural hypotension occurred in 9.7% and syncope in 3.4% of subjects receiving carvedilol compared with 3.6% and 2.5% of placebo subjects, respectively. The risk for these events was highest during the first 30 days of dosing, corresponding to the up-titration period and was a cause for discontinuation of therapy in 0.7% of subjects receiving carvedilol, compared with 0.4% of placebo subjects. In a long-term, placebo-controlled trial in severe heart failure (COPERNICUS), hypotension and postural hypotension occurred in 15.1% and syncope in 2.9% of heart failure subjects receiving carvedilol compared with 8.7% and 2.3% of placebo subjects, respectively. These events were a cause for discontinuation of therapy in 1.1% of subjects receiving carvedilol, compared with 0.8% of placebo subjects.

Postural hypotension occurred in 1.8% and syncope in 0.1% of hypertensive subjects, primarily following the initial dose or at the time of dose increase and was a cause for discontinuation of therapy in 1% of subjects.

In the CAPRICORN trial of survivors of an acute myocardial infarction, hypotension or postural hypotension occurred in 20.2% of subjects receiving carvedilol compared with 12.6% of placebo subjects. Syncope was reported in 3.9% and 1.9% of subjects, respectively. These events were a cause for discontinuation of therapy in 2.5% of subjects receiving carvedilol, compared with 0.2% of placebo subjects.

Starting with a low dose, administration with food, and gradual up-titration should decrease the likelihood of syncope or excessive hypotension [see *Dosage and Administration* (2.1, 2.2, 2.3)]. During initiation of therapy, the patient should be cautioned to avoid situations such as driving or hazardous tasks, where injury could result should syncope occur.

5.4 Heart Failure/Fluid Retention

Worsening heart failure or fluid retention may occur during up-titration of carvedilol. If such symptoms occur, diuretics should be increased and the carvedilol dose should not be advanced until clinical stability resumes [see *Dosage and Administration (2)*]. Occasionally it is necessary to lower the carvedilol dose or temporarily discontinue it. Such episodes do not preclude subsequent successful titration of, or a favorable response to, carvedilol. In a placebo-controlled trial of subjects with severe heart failure, worsening heart failure during the first 3 months was reported to a similar degree with carvedilol and with placebo. When treatment was maintained beyond 3 months, worsening heart failure was reported less frequently in subjects treated with carvedilol than with placebo. Worsening heart failure observed during long-term therapy is more likely to be related to the patients' underlying disease than to treatment with carvedilol.

5.5 Non-Allergic Bronchospasm

Patients with bronchospastic disease (e.g., chronic bronchitis, emphysema) should, in general, not receive β -blockers. Carvedilol may be used with caution, however, in patients who do not respond to, or cannot tolerate, other antihypertensive agents. It is prudent, if carvedilol is used, to use the smallest effective dose, so that inhibition of endogenous or exogenous β -agonists is minimized.

In clinical trials of subjects with heart failure, subjects with bronchospastic disease were enrolled if they did not require oral or inhaled medication to treat their bronchospastic disease. In such patients, it is recommended that carvedilol be used with caution. The dosing recommendations should be followed closely and the dose should be lowered if any evidence of bronchospasm is observed during up-titration.

5.6 Glycemic Control in Type 2 Diabetes

In general, β -blockers may mask some of the manifestations of hypoglycemia, particularly tachycardia. Nonselective β -blockers may potentiate insulin-induced hypoglycemia and delay recovery of serum glucose levels. Patients subject to spontaneous hypoglycemia or diabetic patients receiving insulin or oral hypoglycemic agents should be cautioned about these possibilities.

In patients with heart failure and diabetes, carvedilol therapy may lead to worsening hyperglycemia, which responds to intensification of hypoglycemic therapy. It is recommended that blood glucose be monitored when carvedilol dosing is initiated, adjusted, or discontinued. Trials designed to examine the effects of carvedilol on glycemic control in patients with diabetes and heart failure have not been conducted.

In a trial designed to examine the effects of carvedilol on glycemic control in a population with mild-to-moderate hypertension and well-controlled type 2 diabetes mellitus, carvedilol had no adverse effect on glycemic control, based on HbA_{1c} measurements [see *Clinical Studies (14.4)*].

5.7 Peripheral Vascular Disease

β -blockers can precipitate or aggravate symptoms of arterial insufficiency in patients with peripheral vascular disease. Caution should be exercised in such individuals.

5.8 Deterioration of Renal Function

Rarely, use of carvedilol in patients with heart failure has resulted in deterioration of renal function. Patients at risk appear to be those with low blood pressure (systolic blood pressure less than 100 mm Hg), ischemic heart disease and diffuse vascular disease, and/or underlying renal insufficiency. Renal function has returned to baseline when carvedilol was stopped. In patients with these risk factors it is recommended that renal function be monitored during up-titration of carvedilol and the drug discontinued or dosage reduced if worsening of renal function occurs.

5.9 Major Surgery

Chronically administered β -blocking therapy should not be routinely withdrawn prior to major surgery; however, the impaired ability of the heart to respond to reflex adrenergic stimuli may augment the risks of general anesthesia and surgical procedures.

5.10 Thyrotoxicosis

β -adrenergic blockade may mask clinical signs of hyperthyroidism, such as tachycardia. Abrupt withdrawal of β -blockade may be followed by an exacerbation of the symptoms of hyperthyroidism or may precipitate thyroid storm.

5.11 Pheochromocytoma

In patients with pheochromocytoma, an α -blocking agent should be initiated prior to the use of any β -blocking agent. Although carvedilol has both α - and β -blocking pharmacologic activities, there has been no experience with its use in this condition. Therefore, caution should be taken in the administration of carvedilol to patients suspected of having pheochromocytoma.

5.12 Prinzmetal's Variant Angina

Agents with non-selective β -blocking activity may provoke chest pain in patients with Prinzmetal's variant angina. There has been no clinical experience with carvedilol in these patients although the α -blocking activity may prevent such symptoms. However, caution should be taken in the administration of carvedilol to patients suspected of having Prinzmetal's variant angina.

5.13 Risk of Anaphylactic Reaction

While taking β -blockers, patients with a history of severe anaphylactic reaction to a variety of allergens may be more reactive to repeated challenge, either accidental, diagnostic, or therapeutic. Such patients may be unresponsive to the usual doses of epinephrine used to treat allergic reaction.

5.14 Intraoperative Floppy Iris Syndrome

Intraoperative Floppy Iris Syndrome (IFIS) has been observed during cataract surgery in some patients treated with alpha-1 blockers (carvedilol is an alpha/beta blocker). This variant of small pupil syndrome is characterized by the combination of a flaccid iris that billows in response to intraoperative irrigation currents, progressive intraoperative miosis despite preoperative dilation with standard mydriatic drugs, and potential prolapse of the iris toward the phacoemulsification incisions. The patient's ophthalmologist should be prepared for possible modifications to the surgical technique, such as utilization of iris hooks, iris dilator rings, or viscoelastic substances. There does

not appear to be a benefit of stopping alpha-1 blocker therapy prior to cataract surgery.

6 ADVERSE REACTIONS

6.1 Clinical Studies Experience

Because clinical trials are conducted under widely varying conditions, adverse reaction rates observed in the clinical trials of a drug cannot be directly compared with rates in the clinical trials of another drug and may not reflect the rates observed in practice.

Carvedilol has been evaluated for safety in subjects with heart failure (mild, moderate, and severe), in subjects with left ventricular dysfunction following myocardial infarction and in hypertensive subjects. The observed adverse event profile was consistent with the pharmacology of the drug and the health status of the subjects in the clinical trials. Adverse events reported for each of these patient populations are provided below. Excluded are adverse events considered too general to be informative, and those not reasonably associated with the use of the drug because they were associated with the condition being treated or are very common in the treated population. Rates of adverse events were generally similar across demographic subsets (men and women, elderly and non-elderly, blacks and non-blacks).

Heart Failure

Carvedilol has been evaluated for safety in heart failure in more than 4,500 subjects worldwide of whom more than 2,100 participated in placebo-controlled clinical trials. Approximately 60% of the total treated population in placebo-controlled clinical trials received carvedilol for at least 6 months and 30% received carvedilol for at least 12 months. In the COMET trial, 1,511 subjects with mild-to-moderate heart failure were treated with carvedilol for up to 5.9 years (mean: 4.8 years). Both in U.S. clinical trials in mild-to-moderate heart failure that compared carvedilol in daily doses up to 100 mg (n = 765) with placebo (n = 437), and in a multinational clinical trial in severe heart failure (COPERNICUS) that compared carvedilol in daily doses up to 50 mg (n = 1,156) with placebo (n = 1,133), discontinuation rates for adverse experiences were similar in carvedilol and placebo subjects. In placebo-controlled clinical trials, the only cause of discontinuation greater than 1% and occurring more often on carvedilol was dizziness (1.3% on carvedilol, 0.6% on placebo in the COPERNICUS trial).

Table 1 shows adverse events reported in subjects with mild-to-moderate heart failure enrolled in U.S. placebo-controlled clinical trials, and with severe heart failure enrolled in the COPERNICUS trial. Shown are adverse events that occurred more frequently in drug-treated subjects than placebo-treated subjects with an incidence of greater than 3% in subjects treated with carvedilol regardless of causality. Median trial medication exposure was 6.3 months for both carvedilol and placebo subjects in the trials of mild-to-moderate heart failure and 10.4 months in the trial of subjects with severe heart failure. The adverse event profile of carvedilol observed in the long-term COMET trial was generally similar to that observed in the U.S. Heart Failure Trials.

Table 1. Adverse Events (%) Occurring More Frequently With Carvedilol Than With Placebo in Subjects With Mild-to-Moderate Heart Failure (HF) Enrolled in U.S. Heart Failure Trials or in Subjects With Severe Heart Failure in the COPERNICUS Trial (Incidence > 3% in Subjects Treated

With Carvedilol, Regardless of Causality)

Body System/Adverse Event	Mild-to-Moderate HF		Severe HF	
	Carvedilol (n = 765)	Placebo (n = 437)	Carvedilol (n = 1,156)	Placebo (n = 1,133)
Body as a Whole				
Asthenia	7	7	11	9
Fatigue	24	22	-	-
Digoxin level increased	5	4	2	1
Edema generalized	5	3	6	5
Edema dependent	4	2	-	-
Cardiovascular				
Bradycardia	9	1	10	3
Hypotension	9	3	14	8
Syncope	3	3	8	5
Angina pectoris	2	3	6	4
Central Nervous System				
Dizziness	32	19	24	17
Headache	8	7	5	3
Gastrointestinal				
Diarrhea	12	6	5	3
Nausea	9	5	4	3
Vomiting	6	4	1	2
Metabolic				
Hyperglycemia	12	8	5	3
Weight increase	10	7	12	11
BUN increased	6	5	-	-
NPN increased	6	5	-	-
Hypercholesterolemia	4	3	1	1
Edema peripheral	2	1	7	6
Musculoskeletal				
Arthralgia	6	5	1	1
Respiratory				
Cough increased	4	4	4	2
Rales				
Vision				
Vision abnormal	5	2	-	-

Cardiac failure and dyspnea were also reported in these trials, but the rates were equal or greater in subjects who received placebo.

The following adverse events were reported with a frequency of greater than 1% but less than or equal to 3% and more frequently with carvedilol in either the U.S. placebo-controlled trials in subjects with mild-to-moderate heart failure or in subjects with severe heart failure in the COPERNICUS trial.

Incidence greater than 1% to less than or equal to 3%

Body as a Whole: Allergy, malaise, hypovolemia, fever, leg edema.

Cardiovascular: Fluid overload, postural hypotension, aggravated angina pectoris, AV

block, palpitation, hypertension.

Central and Peripheral Nervous System: Hypesthesia, vertigo, paresthesia.

Gastrointestinal: Melena, periodontitis.

Liver and Biliary System: SGPT increased, SGOT increased.

Metabolic and Nutritional: Hyperuricemia, hypoglycemia, hyponatremia, increased alkaline phosphatase, glycosuria, hypervolemia, diabetes mellitus, GGT increased, weight loss, hyperkalemia, creatinine increased.

Musculoskeletal: Muscle cramps.

Platelet, Bleeding, and Clotting: Prothrombin decreased, purpura, thrombocytopenia.

Psychiatric: Somnolence.

Reproductive, male: Impotence.

Special Senses: Blurred vision.

Urinary System: Renal insufficiency, albuminuria, hematuria.

Left Ventricular Dysfunction Following Myocardial Infarction

Carvedilol has been evaluated for safety in survivors of an acute myocardial infarction with left ventricular dysfunction in the CAPRICORN trial which involved 969 subjects who received carvedilol and 980 who received placebo. Approximately 75% of the subjects received carvedilol for at least 6 months and 53% received carvedilol for at least 12 months. Subjects were treated for an average of 12.9 months and 12.8 months with carvedilol and placebo, respectively.

The most common adverse events reported with carvedilol in the CAPRICORN trial were consistent with the profile of the drug in the U.S. heart failure trials and the COPERNICUS trial. The only additional adverse events reported in CAPRICORN in greater than 3% of the subjects and more commonly on carvedilol were dyspnea, anemia, and lung edema. The following adverse events were reported with a frequency of greater than 1% but less than or equal to 3% and more frequently with carvedilol: flu syndrome, cerebrovascular accident, peripheral vascular disorder, hypotonia, depression, gastrointestinal pain, arthritis, and gout. The overall rates of discontinuations due to adverse events were similar in both groups of subjects. In this database, the only cause of discontinuation greater than 1% and occurring more often on carvedilol was hypotension (1.5% on carvedilol, 0.2% on placebo).

Hypertension

Carvedilol has been evaluated for safety in hypertension in more than 2,193 subjects in U.S. clinical trials and in 2,976 subjects in international clinical trials. Approximately 36% of the total treated population received carvedilol for at least 6 months. Most adverse events reported during therapy with carvedilol were of mild to moderate severity. In U.S. controlled clinical trials directly comparing carvedilol in doses up to 50 mg (n = 1,142) with placebo (n = 462), 4.9% of subjects receiving carvedilol discontinued for adverse events versus 5.2% of placebo subjects. Although there was no overall difference in discontinuation rates, discontinuations were more common in the carvedilol group for postural hypotension (1% versus 0). The overall incidence of adverse events in U.S. placebo-controlled trials increased with increasing dose of carvedilol. For individual adverse events this could only be distinguished for dizziness, which increased in

frequency from 2% to 5% as total daily dose increased from 6.25 mg to 50 mg.

Table 2 shows adverse events in U.S. placebo-controlled clinical trials for hypertension that occurred with an incidence of greater than or equal to 1% regardless of causality and that were more frequent in drug-treated subjects than placebo-treated subjects.

Table 2. Adverse Events (%) Occurring in U.S. Placebo-Controlled Hypertension Trials (Incidence \geq 1%, Regardless of Causality)*

Body System/Adverse Event	Carvedilol (n = 1,142)	Placebo (n = 462)
Cardiovascular		
Bradycardia	2	—
Postural hypotension	2	—
Peripheral edema	1	—
Central Nervous System		
Dizziness	6	5
Insomnia	2	1
Gastrointestinal		
Diarrhea	2	1
Hematologic		
Thrombocytopenia	1	—
Metabolic		
Hypertriglyceridemia	1	—

* Shown are events with rate $>$ 1% rounded to nearest integer.

Dyspnea and fatigue were also reported in these trials, but the rates were equal or greater in subjects who received placebo.

The following adverse events not described above were reported as possibly or probably related to carvedilol in worldwide open or controlled trials with carvedilol in subjects with hypertension or heart failure.

Incidence greater than 0.1% to less than or equal to 1%

Cardiovascular: Peripheral ischemia, tachycardia.

Central and Peripheral Nervous System: Hypokinesia.

Gastrointestinal: Bilirubinemia, increased hepatic enzymes (0.2% of hypertension patients and 0.4% of heart failure patients were discontinued from therapy because of increases in hepatic enzymes) [see *Adverse Reactions (6.2)*].

Psychiatric: Nervousness, sleep disorder, aggravated depression, impaired concentration, abnormal thinking, paroniria, emotional lability.

Respiratory System: Asthma [see *Contraindications (4)*].

Reproductive, male: Decreased libido.

Skin and Appendages: Pruritus, rash erythematous, rash maculopapular, rash psoriaform, photosensitivity reaction.

Special Senses: Tinnitus.

Urinary System: Micturition frequency increased.

Autonomic Nervous System: Dry mouth, sweating increased.

Metabolic and Nutritional: Hypokalemia, hypertriglyceridemia.

Hematologic: Anemia, leukopenia.

The following events were reported in less than or equal to 0.1% of subjects and are potentially important: complete AV block, bundle branch block, myocardial ischemia, cerebrovascular disorder, convulsions, migraine, neuralgia, paresis, anaphylactoid reaction, alopecia, exfoliative dermatitis, amnesia, GI hemorrhage, bronchospasm, pulmonary edema, decreased hearing, respiratory alkalosis, increased BUN, decreased HDL, pancytopenia, and atypical lymphocytes.

Laboratory Abnormalities

Reversible elevations in serum transaminases (ALT or AST) have been observed during treatment with carvedilol. Rates of transaminase elevations (2 to 3 times the upper limit of normal) observed during controlled clinical trials have generally been similar between subjects treated with carvedilol and those treated with placebo. However, transaminase elevations, confirmed by rechallenge, have been observed with carvedilol. In a long-term, placebo-controlled trial in severe heart failure, subjects treated with carvedilol had lower values for hepatic transaminases than subjects treated with placebo, possibly because improvements in cardiac function induced by carvedilol led to less hepatic congestion and/or improved hepatic blood flow.

Carvedilol has not been associated with clinically significant changes in serum potassium, total triglycerides, total cholesterol, HDL cholesterol, uric acid, blood urea nitrogen, or creatinine. No clinically relevant changes were noted in fasting serum glucose in hypertensive patients; fasting serum glucose was not evaluated in the heart failure clinical trials.

6.2 Postmarketing Experience

The following adverse reactions have been identified during post-approval use of carvedilol. Because these reactions are reported voluntarily from a population of uncertain size, it is not always possible to reliably estimate their frequency or establish a causal relationship to drug exposure.

Blood and Lymphatic System Disorders

Aplastic anemia.

Immune System Disorders

Hypersensitivity (e.g., anaphylactic reactions, angioedema, urticaria).

Renal and Urinary Disorders

Urinary incontinence.

Respiratory, Thoracic, and Mediastinal Disorders

Interstitial pneumonitis.

Skin and Subcutaneous Tissue Disorders

Stevens-Johnson syndrome, toxic epidermal necrolysis, erythema multiforme.

7 DRUG INTERACTIONS

7.1 CYP2D6 Inhibitors and Poor Metabolizers

Interactions of carvedilol with potent inhibitors of CYP2D6 isoenzyme (such as quinidine, fluoxetine, paroxetine, and propafenone) have not been studied, but these drugs would be expected to increase blood levels of the R(+) enantiomer of carvedilol [see *Clinical Pharmacology (12.3)*]. Retrospective analysis of side effects in clinical trials showed that poor 2D6 metabolizers had a higher rate of dizziness during up-titration, presumably resulting from vasodilating effects of the higher concentrations of the α -blocking R(+) enantiomer.

7.2 Hypotensive Agents

Patients taking a β -blocker and a drug that can deplete catecholamines (e.g., reserpine and monoamine oxidase inhibitors) should be observed closely for signs of hypotension and/or severe bradycardia.

Concomitant administration of clonidine with a β -blocker may cause hypotension and bradycardia. When concomitant treatment with a β -blocker and clonidine is to be terminated, the β -blocker should be discontinued first. Clonidine therapy can then be discontinued several days later by gradually decreasing the dosage.

7.3 Cyclosporine

Modest increases in mean trough cyclosporine concentrations were observed following initiation of carvedilol treatment in 21 renal transplant subjects suffering from chronic vascular rejection. In about 30% of subjects, the dose of cyclosporine had to be reduced in order to maintain cyclosporine concentrations within the therapeutic range, while in the remainder no adjustment was needed. On the average for the group, the dose of cyclosporine was reduced about 20% in these subjects. Due to wide interindividual variability in the dose adjustment required, it is recommended that cyclosporine concentrations be monitored closely after initiation of carvedilol therapy and that the dose of cyclosporine be adjusted as appropriate.

7.4 Digitalis Glycosides

Both digitalis glycosides and β -blockers slow atrioventricular conduction and decrease heart rate. Concomitant use can increase the risk of bradycardia. Digoxin concentrations are increased by about 15% when digoxin and carvedilol are administered concomitantly. Therefore, increased monitoring of digoxin is recommended when initiating, adjusting, or discontinuing carvedilol [see *Clinical Pharmacology (12.5)*].

7.5 Inducers/Inhibitors of Hepatic Metabolism

Rifampin reduced plasma concentrations of carvedilol by about 70% [see *Clinical Pharmacology (12.5)*]. Cimetidine increased AUC by about 30% but caused no change in C_{max} [see *Clinical Pharmacology (12.5)*].

7.6 Amiodarone

Amiodarone and its metabolite desethyl amiodarone, inhibitors of CYP2C9, and P-glycoprotein increased concentrations of the S(-)-enantiomer of carvedilol by at least 2 fold [see *Clinical Pharmacology (12.5)*]. The concomitant administration of amiodarone or other CYP2C9 inhibitors such as fluconazole with carvedilol may enhance the β -blocking activity, resulting in further slowing of the heart rate or cardiac conduction. Patients should be observed for signs of bradycardia or heart block, particularly when one agent is added to preexisting treatment with the other.

7.7 Calcium Channel Blockers

Conduction disturbance (rarely with hemodynamic compromise) has been observed when carvedilol is coadministered with diltiazem. As with other β -blockers, if carvedilol is administered with calcium channel blockers of the verapamil or diltiazem type, it is recommended that ECG and blood pressure be monitored.

7.8 Insulin or Oral Hypoglycemics

β -blockers may enhance the blood-sugar-reducing effect of insulin and oral hypoglycemics. Therefore, in patients taking insulin or oral hypoglycemics, regular monitoring of blood glucose is recommended [see *Warnings and Precautions (5.6)*].

7.9 Anesthesia

If treatment with carvedilol is to be continued perioperatively, particular care should be taken when anesthetic agents that depress myocardial function, such as ether, cyclopropane, and trichloroethylene, are used [see *Overdosage (10)*].

8 USE IN SPECIFIC POPULATIONS

8.1 Pregnancy

Risk Summary

Available data regarding use of carvedilol in pregnant women are insufficient to determine whether there are drug-associated risks of adverse developmental outcomes. There are risks to the mother and fetus associated with poorly controlled hypertension in pregnancy. The use of beta blockers during the third trimester of pregnancy may increase the risk of hypotension, bradycardia, hypoglycemia, and respiratory depression in the neonate [see *Clinical Considerations*]. In animal reproduction studies, there was no evidence of adverse developmental outcomes at clinically relevant doses [see *Data*]. Oral administration of carvedilol to pregnant rats during organogenesis resulted in post-implantation loss, decreased fetal body weight, and an increased frequency of delayed fetal skeletal development at maternally toxic doses that were 50 times the maximum recommended human dose (MRHD). In addition, oral administration of carvedilol to pregnant rabbits during organogenesis resulted in increased post-implantation loss at doses 25 times the MRHD [see *Data*].

The estimated background risk of major birth defects and miscarriage for the indicated populations are unknown. All pregnancies have a background risk of birth defect, loss, or other adverse outcomes. In the U.S. general population, the estimated background

risk of major birth defects and miscarriage in clinically recognized pregnancies is 2% to 4% and 15% to 20%, respectively.

Clinical Considerations

Disease-Associated Maternal and/or Embryo/Fetal Risk: Hypertension in pregnancy increases the maternal risk for pre-eclampsia, gestational diabetes, premature delivery, and delivery complications (e.g., need for cesarean section and post-partum hemorrhage). Hypertension increases the fetal risk for intrauterine growth restriction and intrauterine death. Pregnant women with hypertension should be carefully monitored and managed accordingly.

Fetal/Neonatal Adverse Reactions: Neonates of women with hypertension who are treated with beta-blockers during the third trimester of pregnancy may be at increased risk for hypotension, bradycardia, hypoglycemia, and respiratory depression. Observe newborns for symptoms of hypotension, bradycardia, hypoglycemia, and respiratory depression and manage accordingly.

Data

Animal Data: Studies performed in rats and rabbits given carvedilol during fetal organogenesis revealed increased post-implantation loss in rats at a maternally toxic dose of 300 mg per kg per day (50 times the MRHD as mg per m²) and in rabbits (in the absence of maternal toxicity) at doses of 75 mg per kg per day (25 times the MRHD as mg per m²). In the rats, there was also a decrease in fetal body weight at 300 mg per kg per day (50 times the MRHD as mg per m²) accompanied by an increased incidence of fetuses with delayed skeletal development. In rats, the no-effect level for embryo-fetal toxicity was 60 mg per kg per day (10 times the MRHD as mg per m²); in rabbits, it was 15 mg per kg per day (5 times the MRHD as mg per m²). In a pre- and post-natal development study in rats administered carvedilol from late gestation through lactation, increased embryo-lethality was observed at a maternally toxic dose of 200 mg per kg per day (approximately 32 times the MRHD as mg per m²), and pup mortality and delays in physical growth/development were observed at 60 mg per kg per day (10 times the MRHD as mg per m²) in the absence of maternal toxicity. The no-effect level was 12 mg per kg per day (2 times the MRHD as mg per m²). Carvedilol was present in fetal rat tissue.

8.2 Lactation

Risk Summary

There are no data on the presence of carvedilol in human milk, the effects on the breastfed infant, or the effects on milk production. Carvedilol is present in the milk of lactating rats. The developmental and health benefits of breastfeeding should be considered along with the mother's clinical need for carvedilol and any potential adverse effects on the breastfed infant from carvedilol or from the underlying maternal condition.

8.4 Pediatric Use

Effectiveness of carvedilol in patients younger than 18 years has not been established.

In a double-blind trial, 161 children (mean age: 6 years; range: 2 months to 17 years; 45% younger than 2 years) with chronic heart failure [NYHA class II to IV, left ventricular

ejection fraction less than 40% for children with a systemic left ventricle (LV), and moderate-severe ventricular dysfunction qualitatively by echo for those with a systemic ventricle that was not an LV] who were receiving standard background treatment were randomized to placebo or to 2 dose levels of carvedilol. These dose levels produced placebo-corrected heart rate reduction of 4 to 6 heart beats per minute, indicative of β -blockade activity. Exposure appeared to be lower in pediatric subjects than adults. After 8 months of follow-up, there was no significant effect of treatment on clinical outcomes. Adverse reactions in this trial that occurred in greater than 10% of subjects treated with carvedilol and at twice the rate of placebo-treated subjects included chest pain (17% versus 6%), dizziness (13% versus 2%), and dyspnea (11% versus 0%).

8.5 Geriatric Use

Of the 765 subjects with heart failure randomized to carvedilol in U.S. clinical trials, 31% (235) were aged 65 years or older, and 7.3% (56) were aged 75 years or older. Of the 1,156 subjects randomized to carvedilol in a long-term, placebo-controlled trial in severe heart failure, 47% (547) were aged 65 years or older, and 15% (174) were aged 75 years or older. Of 3,025 subjects receiving carvedilol in heart failure trials worldwide, 42% were aged 65 years or older.

Of the 975 subjects with myocardial infarction randomized to carvedilol in the CAPRICORN trial, 48% (468) were aged 65 years or older, and 11% (111) were aged 75 years or older.

Of the 2,065 hypertensive subjects in U.S. clinical trials of efficacy or safety who were treated with carvedilol, 21% (436) were aged 65 years or older. Of 3,722 subjects receiving carvedilol in hypertension clinical trials conducted worldwide, 24% were aged 65 years or older.

With the exception of dizziness in hypertensive subjects (incidence 8.8% in the elderly versus 6% in younger subjects), no overall differences in the safety or effectiveness (see **Figures 2** and **4**) were observed between the older subjects and younger subjects in each of these populations. Similarly, other reported clinical experience has not identified differences in responses between the elderly and younger subjects, but greater sensitivity of some older individuals cannot be ruled out.

10 OVERDOSAGE

Overdosage may cause severe hypotension, bradycardia, cardiac insufficiency, cardiogenic shock, and cardiac arrest. Respiratory problems, bronchospasms, vomiting, lapses of consciousness, and generalized seizures may also occur.

The patient should be placed in a supine position and, where necessary, kept under observation and treated under intensive-care conditions. The following agents may be administered:

For excessive bradycardia: Atropine, 2 mg IV.

To support cardiovascular function: Glucagon, 5 to 10 mg IV rapidly over 30 seconds, followed by a continuous infusion of 5 mg per hour; sympathomimetics (dobutamine, isoprenaline, adrenaline) at doses according to body weight and effect.

If peripheral vasodilation dominates, it may be necessary to administer adrenaline or

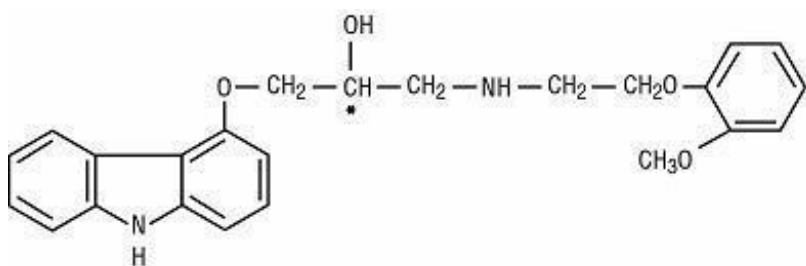
noradrenaline with continuous monitoring of circulatory conditions. For therapy-resistant bradycardia, pacemaker therapy should be performed. For bronchospasm, β -sympathomimetics (as aerosol or IV) or aminophylline IV should be given. In the event of seizures, slow IV injection of diazepam or clonazepam is recommended.

NOTE: In the event of severe intoxication where there are symptoms of shock, treatment with antidotes must be continued for a sufficiently long period of time consistent with the 7 to 10 hour half-life of carvedilol.

Cases of overdosage with carvedilol alone or in combination with other drugs have been reported. Quantities ingested in some cases exceeded 1,000 milligrams. Symptoms experienced included low blood pressure and heart rate. Standard supportive treatment was provided and individuals recovered.

11 DESCRIPTION

Carvedilol, USP is a nonselective β -adrenergic blocking agent with α_1 -blocking activity. It is (\pm)-1-(carbazol-4-yloxy)-3-[[2-(*o*-methoxyphenoxy)ethyl]amino]-2-propanol. Carvedilol, USP is a racemic mixture with the following structure:



$C_{24}H_{26}N_2O_4$ M.W. 406.47

Carvedilol tablets USP are white, elliptical-shaped, film-coated tablets containing 3.125 mg, 6.25 mg, 12.5 mg, or 25 mg of carvedilol, USP. Inactive ingredients consist of colloidal silicon dioxide, crospovidone, hypromellose, lactose monohydrate, magnesium stearate, polyethylene glycol, polysorbate, povidone, and titanium dioxide.

Carvedilol, USP is a white or nearly white, crystalline powder. Slightly soluble in alcohol; practically insoluble in water and in dilute acids.

Carvedilol tablets USP meet USP *Dissolution Test 2*.

12 CLINICAL PHARMACOLOGY

12.1 Mechanism of Action

Carvedilol is a racemic mixture in which nonselective β -adrenoreceptor blocking activity is present in the S(-) enantiomer and α_1 -adrenergic blocking activity is present in both R(+) and S(-) enantiomers at equal potency. Carvedilol has no intrinsic sympathomimetic activity.

12.2 Pharmacodynamics

Heart Failure

The basis for the beneficial effects of carvedilol in heart failure is not established.

Two placebo-controlled trials compared the acute hemodynamic effects of carvedilol with baseline measurements in 59 and 49 subjects with NYHA class II to IV heart failure receiving diuretics, ACE inhibitors, and digitalis. There were significant reductions in systemic blood pressure, pulmonary artery pressure, pulmonary capillary wedge pressure, and heart rate. Initial effects on cardiac output, stroke volume index, and systemic vascular resistance were small and variable.

These trials measured hemodynamic effects again at 12 to 14 weeks. Carvedilol significantly reduced systemic blood pressure, pulmonary artery pressure, right atrial pressure, systemic vascular resistance, and heart rate, while stroke volume index was increased.

Among 839 subjects with NYHA class II to III heart failure treated for 26 to 52 weeks in 4 U.S. placebo-controlled trials, average left ventricular ejection fraction (EF) measured by radionuclide ventriculography increased by 9 EF units (%) in subjects receiving carvedilol and by 2 EF units in placebo subjects at a target dose of 25 to 50 mg twice daily. The effects of carvedilol on ejection fraction were related to dose. Doses of 6.25 mg twice daily, 12.5 mg twice daily, and 25 mg twice daily were associated with placebo-corrected increases in EF of 5 EF units, 6 EF units, and 8 EF units, respectively; each of these effects were nominally statistically significant.

Left Ventricular Dysfunction Following Myocardial Infarction

The basis for the beneficial effects of carvedilol in patients with left ventricular dysfunction following an acute myocardial infarction is not established.

Hypertension

The mechanism by which β -blockade produces an antihypertensive effect has not been established.

β -adrenoreceptor blocking activity has been demonstrated in animal and human studies showing that carvedilol (1) reduces cardiac output in normal subjects, (2) reduces exercise- and/or isoproterenol-induced tachycardia, and (3) reduces reflex orthostatic tachycardia. Significant β -adrenoreceptor blocking effect is usually seen within 1 hour of drug administration.

α_1 -adrenoreceptor blocking activity has been demonstrated in human and animal studies, showing that carvedilol (1) attenuates the pressor effects of phenylephrine, (2) causes vasodilation, and (3) reduces peripheral vascular resistance. These effects contribute to the reduction of blood pressure and usually are seen within 30 minutes of drug administration.

Due to the α_1 -receptor blocking activity of carvedilol, blood pressure is lowered more in the standing than in the supine position, and symptoms of postural hypotension (1.8%), including rare instances of syncope, can occur. Following oral administration, when postural hypotension has occurred, it has been transient and is uncommon when carvedilol is administered with food at the recommended starting dose and titration increments are closely followed [see *Dosage and Administration* (2)].

In hypertensive patients with normal renal function, therapeutic doses of carvedilol decreased renal vascular resistance with no change in glomerular filtration rate or renal

plasma flow. Changes in excretion of sodium, potassium, uric acid, and phosphorus in hypertensive patients with normal renal function were similar after carvedilol and placebo.

Carvedilol has little effect on plasma catecholamines, plasma aldosterone, or electrolyte levels, but it does significantly reduce plasma renin activity when given for at least 4 weeks. It also increases levels of atrial natriuretic peptide.

12.3 Pharmacokinetics

Carvedilol is rapidly and extensively absorbed following oral administration, with absolute bioavailability of approximately 25% to 35% due to a significant degree of first-pass metabolism. Following oral administration, the apparent mean terminal elimination half-life of carvedilol generally ranges from 7 to 10 hours. Plasma concentrations achieved are proportional to the oral dose administered. When administered with food, the rate of absorption is slowed, as evidenced by a delay in the time to reach peak plasma levels, with no significant difference in extent of bioavailability. Taking carvedilol with food should minimize the risk of orthostatic hypotension.

Carvedilol is extensively metabolized. Following oral administration of radiolabelled carvedilol to healthy volunteers, carvedilol accounted for only about 7% of the total radioactivity in plasma as measured by area under the curve (AUC). Less than 2% of the dose was excreted unchanged in the urine. Carvedilol is metabolized primarily by aromatic ring oxidation and glucuronidation. The oxidative metabolites are further metabolized by conjugation via glucuronidation and sulfation. The metabolites of carvedilol are excreted primarily via the bile into the feces. Demethylation and hydroxylation at the phenol ring produce 3 active metabolites with β -receptor blocking activity. Based on preclinical studies, the 4'-hydroxyphenyl metabolite is approximately 13 times more potent than carvedilol for β -blockade.

Compared with carvedilol, the 3 active metabolites exhibit weak vasodilating activity. Plasma concentrations of the active metabolites are about one-tenth of those observed for carvedilol and have pharmacokinetics similar to the parent.

Carvedilol undergoes stereoselective first-pass metabolism with plasma levels of R(+)-carvedilol approximately 2 to 3 times higher than S(-)-carvedilol following oral administration in healthy subjects. The mean apparent terminal elimination half-lives for R(+)-carvedilol range from 5 to 9 hours compared with 7 to 11 hours for the S(-)-enantiomer.

The primary P450 enzymes responsible for the metabolism of both R(+) and S(-)-carvedilol in human liver microsomes were CYP2D6 and CYP2C9 and to a lesser extent CYP3A4, 2C19, 1A2, and 2E1. CYP2D6 is thought to be the major enzyme in the 4'- and 5'-hydroxylation of carvedilol, with a potential contribution from 3A4. CYP2C9 is thought to be of primary importance in the O-methylation pathway of S(-)-carvedilol.

Carvedilol is subject to the effects of genetic polymorphism with poor metabolizers of debrisoquin (a marker for cytochrome P450 2D6) exhibiting 2 to 3 fold higher plasma concentrations of R(+)-carvedilol compared with extensive metabolizers. In contrast, plasma levels of S(-)-carvedilol are increased only about 20% to 25% in poor metabolizers, indicating this enantiomer is metabolized to a lesser extent by cytochrome P450 2D6 than R(+)-carvedilol. The pharmacokinetics of carvedilol do not appear to be different in poor metabolizers of S-mephenytoin (patients deficient in cytochrome P450

2C19).

Carvedilol is more than 98% bound to plasma proteins, primarily with albumin. The plasma-protein binding is independent of concentration over the therapeutic range. Carvedilol is a basic, lipophilic compound with a steady-state volume of distribution of approximately 115 L, indicating substantial distribution into extravascular tissues. Plasma clearance ranges from 500 to 700 mL/min.

12.4 Specific Populations

Heart Failure

Steady-state plasma concentrations of carvedilol and its enantiomers increased proportionally over the 6.25 to 50 mg dose range in subjects with heart failure. Compared with healthy subjects, subjects with heart failure had increased mean AUC and C_{max} values for carvedilol and its enantiomers, with up to 50% to 100% higher values observed in 6 subjects with NYHA class IV heart failure. The mean apparent terminal elimination half-life for carvedilol was similar to that observed in healthy subjects.

Geriatric

Plasma levels of carvedilol average about 50% higher in the elderly compared with young subjects.

Hepatic Impairment

Compared with healthy subjects, patients with severe liver impairment (cirrhosis) exhibit a 4 to 7 fold increase in carvedilol levels. Carvedilol is contraindicated in patients with severe liver impairment.

Renal Impairment

Although carvedilol is metabolized primarily by the liver, plasma concentrations of carvedilol have been reported to be increased in patients with renal impairment. Based on mean AUC data, approximately 40% to 50% higher plasma concentrations of carvedilol were observed in subjects with hypertension and moderate to severe renal impairment compared with a control group of subjects with hypertension and normal renal function. However, the ranges of AUC values were similar for both groups. Changes in mean peak plasma levels were less pronounced, approximately 12% to 26% higher in subjects with impaired renal function.

Consistent with its high degree of plasma protein-binding, carvedilol does not appear to be cleared significantly by hemodialysis.

12.5 Drug-Drug Interactions

Since carvedilol undergoes substantial oxidative metabolism, the metabolism and pharmacokinetics of carvedilol may be affected by induction or inhibition of cytochrome P450 enzymes.

Amiodarone

In a pharmacokinetic trial conducted in 106 Japanese subjects with heart failure, coadministration of small loading and maintenance doses of amiodarone with carvedilol resulted in at least a 2-fold increase in the steady-state trough concentrations of S(-)-

carvedilol [see *Drug Interactions (7.6)*].

Cimetidine

In a pharmacokinetic trial conducted in 10 healthy male subjects, cimetidine (1,000 mg per day) increased the steady-state AUC of carvedilol by 30% with no change in C_{max} [see *Drug Interactions (7.5)*].

Digoxin

Following concomitant administration of carvedilol (25 mg once daily) and digoxin (0.25 mg once daily) for 14 days, steady-state AUC and trough concentrations of digoxin were increased by 14% and 16%, respectively, in 12 subjects with hypertension [see *Drug Interactions (7.4)*].

Glyburide

In 12 healthy subjects, combined administration of carvedilol (25 mg once daily) and a single dose of glyburide did not result in a clinically relevant pharmacokinetic interaction for either compound.

Hydrochlorothiazide

A single oral dose of carvedilol 25 mg did not alter the pharmacokinetics of a single oral dose of hydrochlorothiazide 25 mg in 12 subjects with hypertension. Likewise, hydrochlorothiazide had no effect on the pharmacokinetics of carvedilol.

Rifampin

In a pharmacokinetic trial conducted in 8 healthy male subjects, rifampin (600 mg daily for 12 days) decreased the AUC and C_{max} of carvedilol by about 70% [see *Drug Interactions (7.5)*].

Torsemide

In a trial of 12 healthy subjects, combined oral administration of carvedilol 25 mg once daily and torsemide 5 mg once daily for 5 days did not result in any significant differences in their pharmacokinetics compared with administration of the drugs alone.

Warfarin

Carvedilol (12.5 mg twice daily) did not have an effect on the steady-state prothrombin time ratios and did not alter the pharmacokinetics of R(+)- and S(-)-warfarin following concomitant administration with warfarin in 9 healthy volunteers.

13 NONCLINICAL TOXICOLOGY

13.1 Carcinogenesis, Mutagenesis, Impairment of Fertility

In 2 year studies conducted in rats given carvedilol at doses up to 75 mg per kg per day (12 times the MRHD as mg per m^2) or in mice given up to 200 mg per kg per day (16 times the MRHD as mg per m^2), carvedilol had no carcinogenic effect.

Carvedilol was negative when tested in a battery of genotoxicity assays, including the Ames and the CHO/HGPRT assays for mutagenicity and the *in vitro* hamster micronucleus and *in vivo* human lymphocyte cell tests for clastogenicity.

In a combined fertility/developmental/post-natal toxicity study, rats were given carvedilol (12, 60, 300 mg per kg per day) orally by gavage for 2 weeks before mating and through mating, gestation, and weaning for females and for 62 days prior to and through mating for males. At a dosage of 300 mg per kg per day (greater than or equal to 50 times the MRHD as mg per m²) carvedilol was toxic to adult rats (sedation, reduced weight gain) and was associated with a reduced number of successful matings, prolonged mating time, fewer corpora lutea and implants per dam, fewer live pups per litter, and delays in physical growth/development. The no-effect level for overt toxicity and impairment of fertility was 60 mg per kg per day (10 times the MRHD as mg per m²).

14 CLINICAL STUDIES

14.1 Heart Failure

A total of 6,975 subjects with mild-to-severe heart failure were evaluated in placebo-controlled trials of carvedilol.

Mild-to-Moderate Heart Failure

Carvedilol was studied in 5 multicenter, placebo-controlled trials, and in 1 active-controlled trial (COMET trial) involving subjects with mild-to-moderate heart failure.

Four U.S. multicenter, double-blind, placebo-controlled trials enrolled 1,094 subjects (696 randomized to carvedilol) with NYHA class II to III heart failure and ejection fraction less than or equal to 0.35. The vast majority were on digitalis, diuretics, and an ACE inhibitor at trial entry. Patients were assigned to the trials based upon exercise ability. An Australia-New Zealand double-blind, placebo-controlled trial enrolled 415 subjects (half randomized to carvedilol) with less severe heart failure. All protocols excluded subjects expected to undergo cardiac transplantation during the 7.5 to 15 months of double-blind follow-up. All randomized subjects had tolerated a 2 week course on carvedilol 6.25 mg twice daily.

In each trial, there was a primary end point, either progression of heart failure (1 U.S. trial) or exercise tolerance (2 U.S. trials meeting enrollment goals and the Australia-New Zealand trial). There were many secondary end points specified in these trials, including NYHA classification, patient and physician global assessments, and cardiovascular hospitalization. Other analyses not prospectively planned included the sum of deaths and total cardiovascular hospitalizations. In situations where the primary end points of a trial do not show a significant benefit of treatment, assignment of significance values to the other results is complex, and such values need to be interpreted cautiously.

The results of the U.S. and Australia-New Zealand trials were as follows:

Slowing Progression of Heart Failure: One U.S. multicenter trial (366 subjects) had as its primary end point the sum of cardiovascular mortality, cardiovascular hospitalization, and sustained increase in heart failure medications. Heart failure progression was reduced, during an average follow-up of 7 months, by 48% ($P = 0.008$).

In the Australia-New Zealand trial, death and total hospitalizations were reduced by about 25% over 18 to 24 months. In the 3 largest U.S. trials, death and total hospitalizations were reduced by 19%, 39%, and 49%, nominally statistically significant in

the last 2 trials. The Australia-New Zealand results were statistically borderline.

Functional Measures: None of the multicenter trials had NYHA classification as a primary end point, but all such trials had it as a secondary end point. There was at least a trend toward improvement in NYHA class in all trials. Exercise tolerance was the primary end point in 3 trials; in none was a statistically significant effect found.

Subjective Measures: Health-related quality of life, as measured with a standard questionnaire (a primary end point in 1 trial), was unaffected by carvedilol. However, patients' and investigators' global assessments showed significant improvement in most trials.

Mortality: Death was not a pre-specified end point in any trial, but was analyzed in all trials. Overall, in these 4 U.S. trials, mortality was reduced, nominally significantly so in 2 trials.

The COMET Trial

In this double-blind trial, 3,029 subjects with NYHA class II to IV heart failure (left ventricular ejection fraction less than or equal to 35%) were randomized to receive either carvedilol (target dose: 25 mg twice daily) or immediate-release metoprolol tartrate (target dose: 50 mg twice daily). The mean age of the subjects was approximately 62 years, 80% were males, and the mean left ventricular ejection fraction at baseline was 26%. Approximately 96% of the subjects had NYHA class II or III heart failure. Concomitant treatment included diuretics (99%), ACE inhibitors (91%), digitalis (59%), aldosterone antagonists (11%), and "statin" lipid-lowering agents (21%). The mean duration of follow-up was 4.8 years. The mean dose of carvedilol was 42 mg per day.

The trial had 2 primary end points: all-cause mortality and the composite of death plus hospitalization for any reason. The results of COMET are presented in **Table 3** below. All-cause mortality carried most of the statistical weight and was the primary determinant of the trial size. All-cause mortality was 34% in the subjects treated with carvedilol and was 40% in the immediate-release metoprolol group ($P = 0.0017$; hazard ratio = 0.83, 95% CI: 0.74 to 0.93). The effect on mortality was primarily due to a reduction in cardiovascular death. The difference between the 2 groups with respect to the composite end point was not significant ($P = 0.122$). The estimated mean survival was 8.0 years with carvedilol and 6.6 years with immediate-release metoprolol.

Table 3. Results of COMET

End Point	Carvedilol n = 1,511	Metoprolol n = 1,518	Hazard Ratio	(95% CI)
All-cause mortality	34%	40%	0.83	0.74 to 0.93
Mortality + all hospitalization	74%	76%	0.94	0.86 to 1.02
Cardiovascular death	30%	35%	0.80	0.70 to 0.90
Sudden death	14%	17%	0.81	0.68 to 0.97
Death due to circulatory failure	11%	13%	0.83	0.67 to 1.02
Death due to stroke	0.9%	2.5%	0.33	0.18 to 0.62

It is not known whether this formulation of metoprolol at any dose or this low dose of

metoprolol in any formulation has any effect on survival or hospitalization in patients with heart failure. Thus, this trial extends the time over which carvedilol manifests benefits on survival in heart failure, but it is not evidence that carvedilol improves outcome over the formulation of metoprolol (TOPROL-XL[®]) with benefits in heart failure.

Severe Heart Failure (COPERNICUS)

In a double-blind trial (COPERNICUS), 2,289 subjects with heart failure at rest or with minimal exertion and left ventricular ejection fraction less than 25% (mean 20%), despite digitalis (66%), diuretics (99%), and ACE inhibitors (89%), were randomized to placebo or carvedilol. Carvedilol was titrated from a starting dose of 3.125 mg twice daily to the maximum tolerated dose or up to 25 mg twice daily over a minimum of 6 weeks. Most subjects achieved the target dose of 25 mg. The trial was conducted in Eastern and Western Europe, the United States, Israel, and Canada. Similar numbers of subjects per group (about 100) withdrew during the titration period.

The primary end point of the trial was all-cause mortality, but cause-specific mortality and the risk of death or hospitalization (total, cardiovascular [CV], or heart failure [HF]) were also examined. The developing trial data were followed by a data monitoring committee, and mortality analyses were adjusted for these multiple looks. The trial was stopped after a median follow-up of 10 months because of an observed 35% reduction in mortality (from 19.7% per patient-year on placebo to 12.8% on carvedilol; hazard ratio 0.65, 95% CI: 0.52 to 0.81, $P = 0.0014$, adjusted) (see **Figure 1**). The results of COPERNICUS are shown in **Table 4**.

Table 4. Results of COPERNICUS Trial in Subjects With Severe Heart Failure

End Point	Placebo (n = 1,133)	Carvedilol (n = 1,156)	Hazard Ratio (95% CI)	% Reduction	Nominal P value
Mortality	190	130	0.65 (0.52 to 0.81)	35	0.00013
Mortality + all hospitalization	507	425	0.76 (0.67 to 0.87)	24	0.00004
Mortality + CV hospitalization	395	314	0.73 (0.63 to 0.84)	27	0.00002
Mortality + HF hospitalization	357	271	0.69 (0.59 to 0.81)	31	0.000004

Cardiovascular = CV; Heart failure = HF.

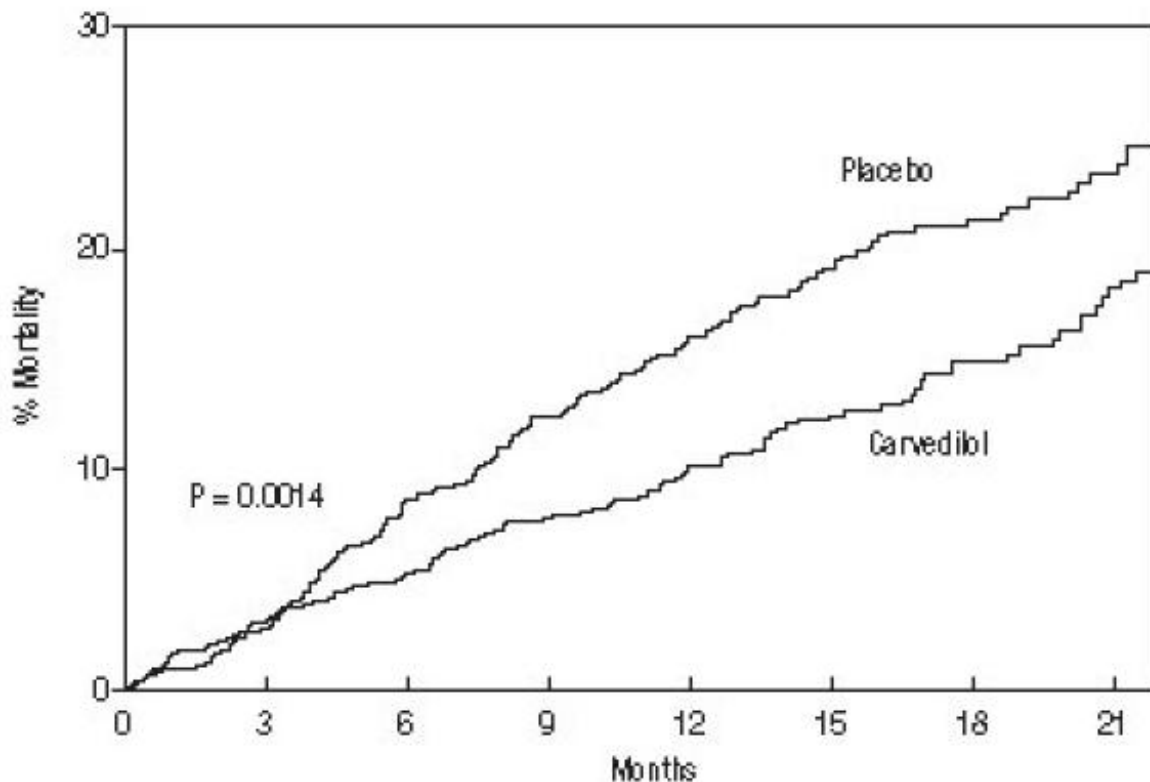


Figure 1: Survival Analysis for COPERNICUS (Intent-to-Treat)

The effect on mortality was principally the result of a reduction in the rate of sudden death among subjects without worsening heart failure.

Patients' global assessments, in which carvedilol-treated subjects were compared with placebo, were based on pre-specified, periodic patient self-assessments regarding whether clinical status post-treatment showed improvement, worsening, or no change compared with baseline. Subjects treated with carvedilol showed significant improvements in global assessments compared with those treated with placebo in COPERNICUS.

The protocol also specified that hospitalizations would be assessed. Fewer subjects on carvedilol than on placebo were hospitalized for any reason (372 versus 432, $P = 0.0029$), for cardiovascular reasons (246 versus 314, $P = 0.0003$), or for worsening heart failure (198 versus 268, $P = 0.0001$).

Carvedilol had a consistent and beneficial effect on all-cause mortality as well as the combined end points of all-cause mortality plus hospitalization (total, CV, or for heart failure) in the overall trial population and in all subgroups examined, including men and women, elderly and non-elderly, blacks and non-blacks, and diabetics and non-diabetics (see **Figure 2**).

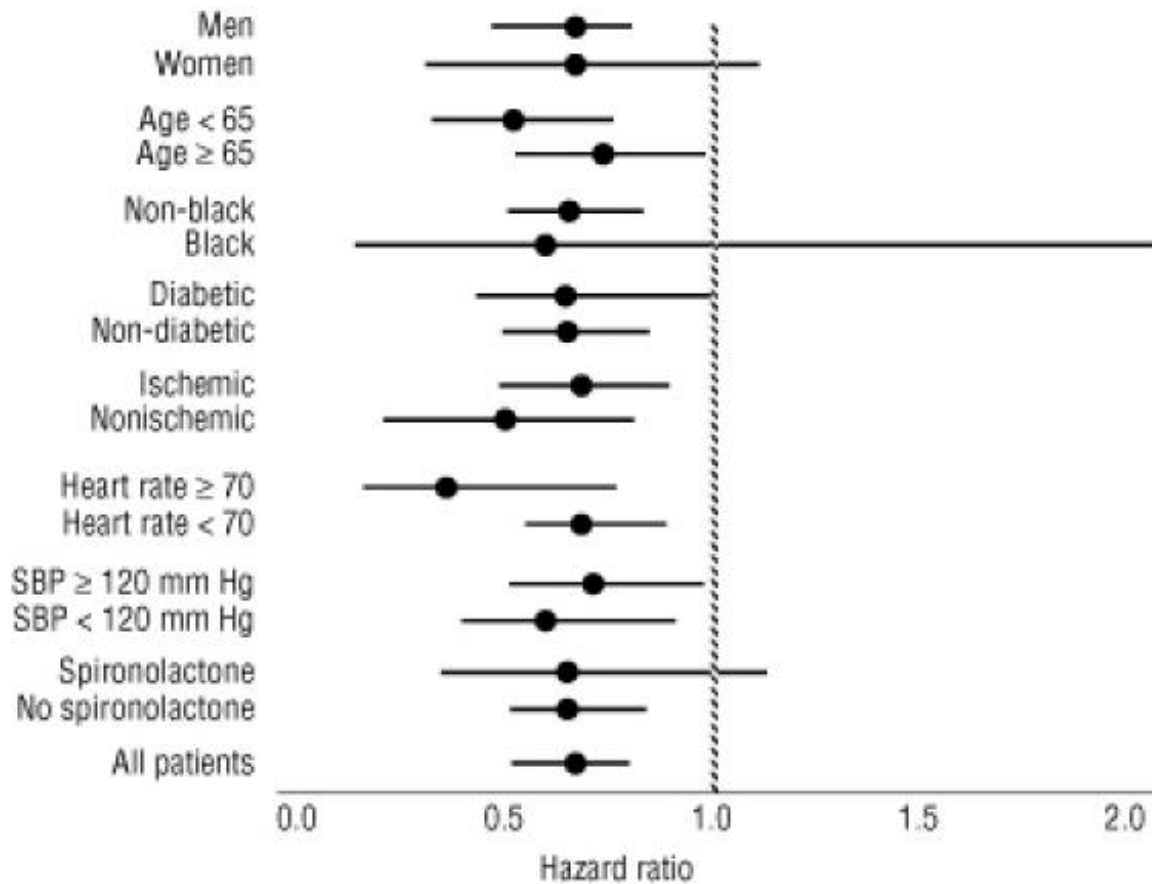


Figure 2: Effects on Mortality for Subgroups in COPERNICUS

14.2 Left Ventricular Dysfunction Following Myocardial Infarction

CAPRICORN was a double-blind trial comparing carvedilol and placebo in 1,959 subjects with a recent myocardial infarction (within 21 days) and left ventricular ejection fraction of less than or equal to 40%, with (47%) or without symptoms of heart failure. Subjects given carvedilol received 6.25 mg twice daily, titrated as tolerated to 25 mg twice daily. Subjects had to have a systolic blood pressure greater than 90 mm Hg, a sitting heart rate greater than 60 beats per minute, and no contraindication to β -blocker use. Treatment of the index infarction included aspirin (85%), IV or oral β -blockers (37%), nitrates (73%), heparin (64%), thrombolytics (40%), and acute angioplasty (12%). Background treatment included ACE inhibitors or angiotensin-receptor blockers (97%), anticoagulants (20%), lipid-lowering agents (23%), and diuretics (34%). Baseline population characteristics included an average age of 63 years, 74% male, 95% Caucasian, mean blood pressure 121/74 mm Hg, 22% with diabetes, and 54% with a history of hypertension. Mean dosage achieved of carvedilol was 20 mg twice daily; mean duration of follow-up was 15 months.

All-cause mortality was 15% in the placebo group and 12% in the carvedilol group, indicating a 23% risk reduction in subjects treated with carvedilol (95% CI: 2% to 40%, $P = 0.03$), as shown in **Figure 3**. The effects on mortality in various subgroups are shown in **Figure 4**. Nearly all deaths were cardiovascular (which were reduced by 25% by carvedilol), and most of these deaths were sudden or related to pump failure (both

types of death were reduced by carvedilol). Another trial end point, total mortality and all-cause hospitalization, did not show a significant improvement.

There was also a significant 40% reduction in fatal or non-fatal myocardial infarction observed in the group treated with carvedilol (95% CI: 11% to 60%, $P = 0.01$). A similar reduction in the risk of myocardial infarction was also observed in a meta-analysis of placebo-controlled trials of carvedilol in heart failure.

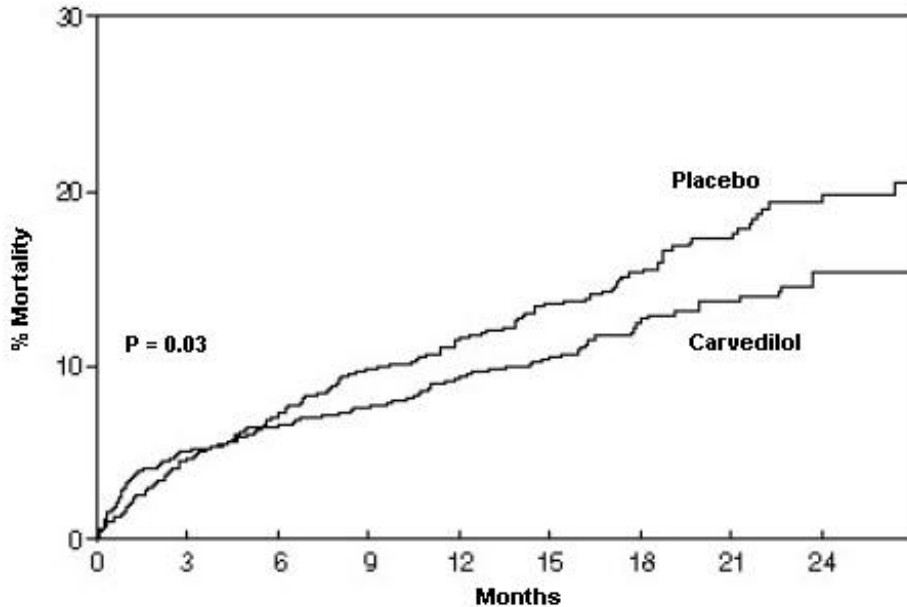


Figure 3: Survival Analysis for CAPRICORN (Intent-to-Treat)

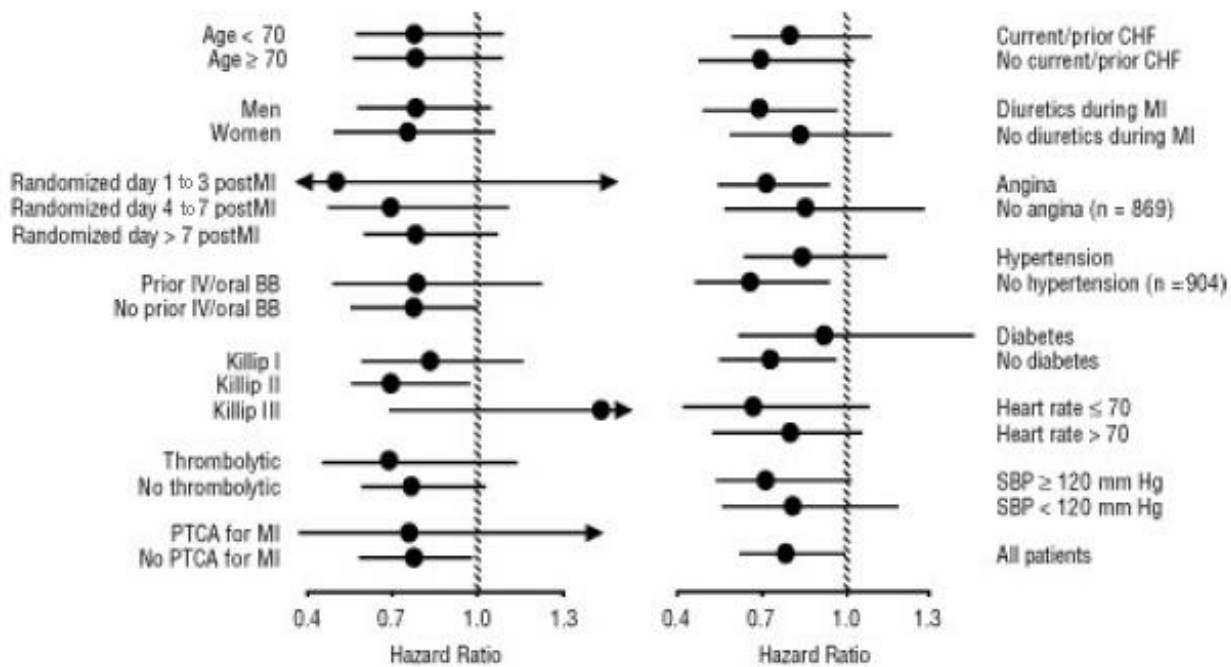


Figure 4: Effects on Mortality for Subgroups in CAPRICORN

14.3 Hypertension

Carvedilol was studied in 2 placebo-controlled trials that utilized twice-daily dosing at total

daily doses of 12.5 to 50 mg. In these and other trials, the starting dose did not exceed 12.5 mg. At 50 mg per day, carvedilol reduced sitting trough (12 hour) blood pressure by about 9/5.5 mm Hg; at 25 mg per day the effect was about 7.5/3.5 mm Hg. Comparisons of trough-to-peak blood pressure showed a trough-to-peak ratio for blood pressure response of about 65%. Heart rate fell by about 7.5 beats per minute at 50 mg per day. In general, as is true for other β -blockers, responses were smaller in black than non-black subjects. There were no age- or gender-related differences in response.

The peak antihypertensive effect occurred 1 to 2 hours after a dose. The dose-related blood pressure response was accompanied by a dose-related increase in adverse effects [see *Adverse Reactions* (6)].

14.4 Hypertension With Type 2 Diabetes Mellitus

In a double-blind trial (GEMINI), carvedilol, added to an ACE inhibitor or angiotensin-receptor blocker, was evaluated in a population with mild-to-moderate hypertension and well-controlled type 2 diabetes mellitus. The mean HbA1c at baseline was 7.2%. Carvedilol was titrated to a mean dose of 17.5 mg twice daily and maintained for 5 months. Carvedilol had no adverse effect on glycemic control, based on HbA1c measurements (mean change from baseline of 0.02%, 95% CI: -0.06 to 0.10, $P = NS$) [see *Warnings and Precautions* (5.6)].

16 HOW SUPPLIED/STORAGE AND HANDLING

Carvedilol tablets USP, 3.125 mg, are available as white, film-coated, elliptical-shaped tablets, debossed with "TV" on one side and "51" on the other. They are available in blistercards of 30 (NDC 0615-8387-39), blistercards of 15 (NDC 0615-8387-05), and Unit-dose boxes of 30 (NDC 0615-8387-30).

Carvedilol tablets USP, 6.25 mg, are available as white, film-coated, elliptical-shaped tablets, debossed with "TV" on one side and "135" on the other. They are available in blistercards of 30 (NDC 0615-8388-39) and Unit-dose boxes of 30 (NDC 0615-8388-30).

Carvedilol tablets USP, 12.5 mg, are available as white, film-coated, elliptical-shaped tablets, debossed with "TV" on one side and "7295" on the other. They are available in blistercards of 30 (NDC 0615-8389-39) and Unit-dose boxes of 30 (NDC 0615-8389-30).

Carvedilol tablets USP, 25 mg, are available as white, film-coated, elliptical-shaped tablets, debossed with "TV" on one side and "7296" on the other. They are available in blistercards of 30 (NDC 0615-8390-39) and Unit-dose boxes of 30 (NDC 0615-8390-30).

Store at 20° to 25°C (68° to 77°F) [See USP Controlled Room Temperature]. Protect from moisture.

Dispense in a tight, light-resistant container as defined in the USP, with a child-resistant closure (as required).

17 PATIENT COUNSELING INFORMATION

Advise the patient to read the FDA-approved patient labeling (Patient Information).

Patients taking carvedilol tablets should be advised of the following:

- Patients should take carvedilol tablets with food.
- Patients should not interrupt or discontinue using carvedilol tablets without a physician's advice.
- Patients with heart failure should consult their physician if they experience signs or symptoms of worsening heart failure such as weight gain or increasing shortness of breath.
- Patients may experience a drop in blood pressure when standing, resulting in dizziness and, rarely, fainting. Patients should sit or lie down when these symptoms of lowered blood pressure occur.
- If experiencing dizziness or fatigue, patients should avoid driving or hazardous tasks.
- Patients should consult a physician if they experience dizziness or faintness, in case the dosage should be adjusted.
- Diabetic patients should report any changes in blood sugar levels to their physician.
- Contact lens wearers may experience decreased lacrimation.

All brand names listed are the registered trademarks of their respective owners and are not trademarks of Teva Pharmaceuticals USA, Inc.

Manufactured For:

Teva Pharmaceuticals USA, Inc.

North Wales, PA 19454

Rev. T 9/2017

PHARMACIST - DETACH HERE AND GIVE INSTRUCTIONS TO PATIENT

--

PATIENT INFORMATION

Carvedilol (kar-VE-dil-ol) Tablets USP

Read the Patient Information that comes with carvedilol tablets before you start taking them and each time you get a refill. There may be new information. This information does not take the place of talking with your doctor about your medical condition or your treatment. If you have any questions about carvedilol tablets, ask your doctor or pharmacist.

What are carvedilol tablets?

Carvedilol tablets are a prescription medicine that belongs to a group of medicines called "beta-blockers". Carvedilol tablets are used, often with other medicines, for the following conditions:

- to treat patients with certain types of heart failure
- to treat patients who had a heart attack that worsened how well the heart pumps
- to treat patients with high blood pressure (hypertension)

Carvedilol tablets are not approved for use in children under 18 years of age.

Who should not take carvedilol tablets?

Do not take carvedilol tablets if you:

- have severe heart failure and are hospitalized in the intensive care unit or require certain intravenous medications that help support circulation (inotropic medications).
- are prone to asthma or other breathing problems.
- have a slow heartbeat or a heart that skips a beat (irregular heartbeat).
- have liver problems.
- are allergic to any of the ingredients in carvedilol tablets. The active ingredient is carvedilol. See the end of this leaflet for a list of all the ingredients in carvedilol tablets.

What should I tell my doctor before taking carvedilol tablets?

Tell your doctor about all of your medical conditions, including if you:

- have asthma or other lung problems (such as bronchitis or emphysema).
- have problems with blood flow in your feet and legs (peripheral vascular disease). Carvedilol tablets can make some of your symptoms worse.
- have diabetes.
- have thyroid problems.
- have a condition called pheochromocytoma.
- have had severe allergic reactions.
- are pregnant or trying to become pregnant. It is not known if carvedilol is safe for your unborn baby. You and your doctor should talk about the best way to control your high blood pressure during pregnancy.
- are breastfeeding. It is not known if carvedilol passes into your breast milk. Talk with your doctor about the best way to feed your baby if you are taking carvedilol tablets.
- are scheduled for surgery and will be given anesthetic agents.
- are scheduled for cataract surgery and have taken or are currently taking carvedilol tablets.
- are taking prescription or over-the-counter medicines, vitamins, and herbal supplements. Carvedilol tablets and certain other medicines can affect each other and cause serious side effects. Carvedilol tablets may affect the way other medicines work. Also, other medicines may affect how well carvedilol tablets work.

Keep a list of all the medicines you take. Show this list to your doctor and pharmacist before you start a new medicine.

How should I take carvedilol tablets?

It is important for you to take your medicine every day as directed by your doctor. If you stop taking carvedilol tablets suddenly, you could have chest pain and/or a heart attack. If your doctor decides that you should stop taking carvedilol tablets, your doctor may slowly lower your dose over a period of time before stopping it completely.

- Take carvedilol tablets exactly as prescribed. Your doctor will tell you how many tablets to take and how often. In order to minimize possible side effects, your doctor might begin with a low dose and then slowly increase the dose.
- **Do not stop taking carvedilol tablets and do not change the amount of carvedilol tablets you take without talking to your doctor.**
- Tell your doctor if you gain weight or have trouble breathing while taking carvedilol tablets.

- Take carvedilol tablets with food.
- If you miss a dose of carvedilol tablets, take your dose as soon as you remember, unless it is time to take your next dose. Take your next dose at the usual time. Do not take 2 doses at the same time.
- If you take too many carvedilol tablets, call your doctor or poison control center right away.

What should I avoid while taking carvedilol tablets?

- Carvedilol tablets can cause you to feel dizzy, tired, or faint. Do not drive a car, use machinery, or do anything that needs you to be alert if you have these symptoms.

What are possible side effects of carvedilol tablets?

- **Low blood pressure (which may cause dizziness or fainting when you stand up).** If these happen, sit or lie down right away and tell your doctor.
- **Tiredness.** If you feel tired or dizzy you should not drive, use machinery, or do anything that needs you to be alert.
- **Slow heartbeat.**
- **Changes in your blood sugar. If you have diabetes, tell your doctor if you have any changes in your blood sugar levels.**
- Carvedilol may hide some of the symptoms of low blood sugar, especially a fast heartbeat.
- Carvedilol may mask the symptoms of hyperthyroidism (overactive thyroid).
- **Worsening of severe allergic reactions.**
- Rare but serious allergic reactions (including hives or swelling of the face, lips, tongue, and/or throat that may cause difficulty in breathing or swallowing) have happened in patients who were on carvedilol. These reactions can be life-threatening.

Other side effects of carvedilol tablets include shortness of breath, weight gain, diarrhea, and fewer tears or dry eyes that become bothersome if you wear contact lenses.

Call your doctor if you have any side effects that bother you or don't go away.

Call your doctor for medical advice about side effects. You may report side effects to FDA at 1-800-FDA-1088.

How should I store carvedilol tablets?

- Store carvedilol tablets at 68° to 77°F (20° to 25°C). Keep the tablets dry.
- Safely, throw away carvedilol tablets that are out of date or no longer needed.
- Keep carvedilol tablets and all medicines out of the reach of children.

General Information about carvedilol tablets

Medicines are sometimes prescribed for conditions other than those described in patient information leaflets. Do not use carvedilol tablets for a condition for which they were not prescribed. Do not give carvedilol tablets to other people, even if they have the same symptoms you have. They may harm them.

This leaflet summarizes the most important information about carvedilol tablets. If you would like more information, talk with your doctor. You can ask your doctor or pharmacist for information about carvedilol tablets that is written for healthcare professionals.

What are the ingredients in carvedilol tablets USP?

Active Ingredient: carvedilol, USP

Inactive Ingredients: colloidal silicon dioxide, croscopovidone, hypromellose, lactose monohydrate, magnesium stearate, polyethylene glycol, polysorbate, povidone, and titanium dioxide.

Carvedilol tablets come in the following strengths: 3.125 mg, 6.25 mg, 12.5 mg, 25 mg.

What is high blood pressure (hypertension)?

Blood pressure is the force of blood in your blood vessels when your heart beats and when your heart rests. You have high blood pressure when the force is too much. High blood pressure makes the heart work harder to pump blood through the body and causes damage to blood vessels. Carvedilol tablets can help your blood vessels relax so your blood pressure is lower. Medicines that lower blood pressure may lower your chance of having a stroke or heart attack.

Manufactured For:

Teva Pharmaceuticals USA, Inc.

North Wales, PA 19454

Rev. K 9/2017

Package/Label Display Panel - 3.125 mg BINGO



VLI NDC 0615-8387-39

Carvedilol
Tabs USP
3.125 mg

LOT 8387-

EXP

8387-AA-39 v00

QTY
30

Mfg By Piramal for
Teva
(NDC 0093-0051-05)
PKG BY VANGAIRD
GLASGOW, KY 42141

Rx only

(Teva NDC 0093-0051-05)

Carvedilol
Tabs USP
3.125 mg

Received: _____

31	24	16	8
30	23	15	7
29	22	14	6
28	21	13	5
27	20	12	4
26	19	11	3
25	18	10	2
24	17	9	1
Start Date	Start Time		

STORE AT 20° - 25° C (68° - 77° F)
(SEE USP CONTROLLED ROOM TEMPERATURE)

Dispense in a tight, light-resistant container.
Protect from moisture.

See package insert or label for dosage information
FOR INSTITUTIONAL USE ONLY

30	23	15	7
29	22	14	6
28	21	13	5
27	20	12	4
26	19	11	3
25	18	10	2
24	17	9	1

Pkg by Vangard, Glasgow, KY 42141 Carvedilol Tab USP 3.125 mg LOT 8387- 	Pkg by Vangard, Glasgow, KY 42141 Carvedilol Tab USP 3.125 mg LOT 8387- 	Pkg by Vangard, Glasgow, KY 42141 Carvedilol Tab USP 3.125 mg LOT 8387- 	8387-AA-B-v01 Vangard Labs Glasgow, KY 42141 LOT 8387-
Pkg by Vangard, Glasgow, KY 42141 Carvedilol Tab USP 3.125 mg LOT 8387- 	Pkg by Vangard, Glasgow, KY 42141 Carvedilol Tab USP 3.125 mg LOT 8387- 	Pkg by Vangard, Glasgow, KY 42141 Carvedilol Tab USP 3.125 mg LOT 8387- 	Pkg by Vangard, Glasgow, KY 42141 Carvedilol Tab USP 3.125 mg LOT 8387-
Pkg by Vangard, Glasgow, KY 42141 Carvedilol Tab USP 3.125 mg LOT 8387- 	Pkg by Vangard, Glasgow, KY 42141 Carvedilol Tab USP 3.125 mg LOT 8387- 	Pkg by Vangard, Glasgow, KY 42141 Carvedilol Tab USP 3.125 mg LOT 8387- 	Pkg by Vangard, Glasgow, KY 42141 Carvedilol Tab USP 3.125 mg LOT 8387-
Pkg by Vangard, Glasgow, KY 42141 Carvedilol Tab USP 3.125 mg LOT 8387- 	Pkg by Vangard, Glasgow, KY 42141 Carvedilol Tab USP 3.125 mg LOT 8387- 	Pkg by Vangard, Glasgow, KY 42141 Carvedilol Tab USP 3.125 mg LOT 8387- 	Pkg by Vangard, Glasgow, KY 42141 Carvedilol Tab USP 3.125 mg LOT 8387-
Pkg by Vangard, Glasgow, KY 42141 Carvedilol Tab USP 3.125 mg LOT 8387- 	Pkg by Vangard, Glasgow, KY 42141 Carvedilol Tab USP 3.125 mg LOT 8387- 	Pkg by Vangard, Glasgow, KY 42141 Carvedilol Tab USP 3.125 mg LOT 8387- 	Pkg by Vangard, Glasgow, KY 42141 Carvedilol Tab USP 3.125 mg LOT 8387-
Pkg by Vangard, Glasgow, KY 42141 Carvedilol Tab USP 3.125 mg LOT 8387- 	Pkg by Vangard, Glasgow, KY 42141 Carvedilol Tab USP 3.125 mg LOT 8387- 	Pkg by Vangard, Glasgow, KY 42141 Carvedilol Tab USP 3.125 mg LOT 8387- 	Pkg by Vangard, Glasgow, KY 42141 Carvedilol Tab USP 3.125 mg LOT 8387-
Pkg by Vangard, Glasgow, KY 42141 Carvedilol Tab USP 3.125 mg LOT 8387- 	Pkg by Vangard, Glasgow, KY 42141 Carvedilol Tab USP 3.125 mg LOT 8387- 	Pkg by Vangard, Glasgow, KY 42141 Carvedilol Tab USP 3.125 mg LOT 8387- 	Pkg by Vangard, Glasgow, KY 42141 Carvedilol Tab USP 3.125 mg LOT 8387-



The overall configuration of this package is a trademark of Omnicare, Inc.

Package/Label Display Panel - 3.125 mg UNIT DOSE

8387-AA-UD1-V01

Pkg By Vanguard, Glasgow, KY 42141
Carvedilol
Tab USP
3.125 mg
LOT 8387-
0093005105

Pkg By Vanguard, Glasgow, KY 42141
Carvedilol
Tab USP
3.125 mg
LOT 8387-
0093005105

Pkg By Vanguard, Glasgow, KY 42141
Carvedilol
Tab USP
3.125 mg
LOT 8387-
0093005105

Pkg By Vanguard, Glasgow, KY 42141
Carvedilol
Tab USP
3.125 mg
LOT 8387-
0093005105

Pkg By Vanguard, Glasgow, KY 42141
Carvedilol
Tab USP
3.125 mg
LOT 8387-
0093005105

Pkg By Vanguard, Glasgow, KY 42141
Carvedilol
Tab USP
3.125 mg
LOT 8387-
0093005105

Pkg By Vanguard, Glasgow, KY 42141
Carvedilol
Tab USP
3.125 mg
LOT 8387-
0093005105

Pkg By Vanguard, Glasgow, KY 42141
Carvedilol
Tab USP
3.125 mg
LOT 8387-
0093005105

Pkg By Vanguard, Glasgow, KY 42141
Carvedilol
Tab USP
3.125 mg
LOT 8387-
0093005105

Pkg By Vanguard, Glasgow, KY 42141
Carvedilol
Tab USP
3.125 mg
LOT 8387-
0093005105

Pkg By Vanguard, Glasgow, KY 42141
Carvedilol
Tab USP
3.125 mg
LOT 8387-
0093005105

Pkg By Vanguard, Glasgow, KY 42141
Carvedilol
Tab USP
3.125 mg
LOT 8387-
0093005105

Pkg By Vanguard, Glasgow, KY 42141
Carvedilol
Tab USP
3.125 mg
LOT 8387-
0093005105

Pkg By Vanguard, Glasgow, KY 42141
Carvedilol
Tab USP
3.125 mg
LOT 8387-
0093005105

Pkg By Vanguard, Glasgow, KY 42141
Carvedilol
Tab USP
3.125 mg
LOT 8387-
0093005105

Pkg By Vanguard, Glasgow, KY 42141
Carvedilol
Tab USP
3.125 mg
LOT 8387-
0093005105

Pkg By Vanguard, Glasgow, KY 42141
Carvedilol
Tab USP
3.125 mg
LOT 8387-
0093005105

Pkg By Vanguard, Glasgow, KY 42141
Carvedilol
Tab USP
3.125 mg
LOT 8387-
0093005105

Pkg By Vanguard, Glasgow, KY 42141
Carvedilol
Tab USP
3.125 mg
LOT 8387-
0093005105

Pkg By Vanguard, Glasgow, KY 42141
Carvedilol
Tab USP
3.125 mg
LOT 8387-
0093005105

Pkg By Vanguard, Glasgow, KY 42141
Carvedilol
Tab USP
3.125 mg
LOT 8387-
0093005105

Pkg By Vanguard, Glasgow, KY 42141
Carvedilol
Tab USP
3.125 mg
LOT 8387-
0093005105

Pkg By Vanguard, Glasgow, KY 42141
Carvedilol
Tab USP
3.125 mg
LOT 8387-
0093005105

Pkg By Vanguard, Glasgow, KY 42141
Carvedilol
Tab USP
3.125 mg
LOT 8387-
0093005105

Pkg By Vanguard, Glasgow, KY 42141
Carvedilol
Tab USP
3.125 mg
LOT 8387-
0093005105

Pkg By Vanguard, Glasgow, KY 42141
Carvedilol
Tab USP
3.125 mg
LOT 8387-
0093005105

Pkg By Vanguard, Glasgow, KY 42141
Carvedilol
Tab USP
3.125 mg
LOT 8387-
0093005105

Pkg By Vanguard, Glasgow, KY 42141
Carvedilol
Tab USP
3.125 mg
LOT 8387-
0093005105

Pkg By Vanguard, Glasgow, KY 42141
Carvedilol
Tab USP
3.125 mg
LOT 8387-
0093005105

Pkg By Vanguard, Glasgow, KY 42141
Carvedilol
Tab USP
3.125 mg
LOT 8387-
0093005105

VLI NDC 0615-8387-30		VLI NDC 0615-8387-30	
Carvedilol Tablets USP 3.125 mg		Carvedilol Tablets USP 3.125 mg	
QTY 30	Rx only	FOR INSTITUTIONAL USE ONLY	
STORE AT 20°-25°C (68°-77°F) (SEE USP CONTROLLED ROOM TEMPERATURE)		QTY 30	LOT: EXP:
Dispense in a tight, light-resistant container. Protect from moisture.		Manufactured By Piramal	Repackaged by Vanguard Labs Glasgow, KY 42141
LOT:		NDC 0093-0051-05	
EXP:		Dosage: See aetnao365.sharepoint.com/sites/omnicare-search/dnucps/StatePages/Home.aspx	
	8387-AA 7 00001-01	 009300510530	

Package/Label Display Panel - 6.25 mg BINGO



VLI NDC 0615-8388-39

Carvedilol
Tabs USP 6.25 mg



LOT 8388-

EXP

8388-AA-39 v00

QTY
30

Rx only

Mfg By Piramal for
Teva
(NDC 0093-0135-05)
PKG BY VANGAIRD
GLASGOW, KY 42141

(Teva NDC 0093-0135-05)
Carvedilol
Tabs USP 6.25 mg

Received: _____

31	24	16	8
30	23	15	7
29	22	14	6
28	21	13	5
27	20	12	4
26	19	11	3
25	18	10	2
24	17	9	1

Start Date _____ Start Time _____

STORE AT 20° - 25°C (68° - 77° F)
(SEE USP CONTROLLED ROOM TEMPERATURE)

Dispense in a tight, light-resistant container.
Protect from moisture.

See package insert or label for dosage information
FOR INSTITUTIONAL USE ONLY

16	8		
30	23	15	7
29	22	14	6
28	21	13	5
27	20	12	4
26	19	11	3
25	18	10	2
24	17	9	1

<p>Pkg by Vangard, Glasgow, KY 42141 Carvedilol Tab USP 6.25 mg LOT 8388- 0093013505</p>	<p>Pkg by Vangard, Glasgow, KY 42141 Carvedilol Tab USP 6.25 mg LOT 8388- 0093013505</p>	<p>Pkg by Vangard, Glasgow, KY 42141 Carvedilol Tab USP 6.25 mg LOT 8388- 0093013505</p>	<p>8388-AA-B-v01 Vangard Labs Glasgow, KY 42141 LOT 8388- 0093013505</p>
<p>Pkg by Vangard, Glasgow, KY 42141 Carvedilol Tab USP 6.25 mg LOT 8388- 0093013505</p>	<p>Pkg by Vangard, Glasgow, KY 42141 Carvedilol Tab USP 6.25 mg LOT 8388- 0093013505</p>	<p>Pkg by Vangard, Glasgow, KY 42141 Carvedilol Tab USP 6.25 mg LOT 8388- 0093013505</p>	<p>Pkg by Vangard, Glasgow, KY 42141 Carvedilol Tab USP 6.25 mg LOT 8388- 0093013505</p>
<p>Pkg by Vangard, Glasgow, KY 42141 Carvedilol Tab USP 6.25 mg LOT 8388- 0093013505</p>	<p>Pkg by Vangard, Glasgow, KY 42141 Carvedilol Tab USP 6.25 mg LOT 8388- 0093013505</p>	<p>Pkg by Vangard, Glasgow, KY 42141 Carvedilol Tab USP 6.25 mg LOT 8388- 0093013505</p>	<p>Pkg by Vangard, Glasgow, KY 42141 Carvedilol Tab USP 6.25 mg LOT 8388- 0093013505</p>
<p>Pkg by Vangard, Glasgow, KY 42141 Carvedilol Tab USP 6.25 mg LOT 8388- 0093013505</p>	<p>Pkg by Vangard, Glasgow, KY 42141 Carvedilol Tab USP 6.25 mg LOT 8388- 0093013505</p>	<p>Pkg by Vangard, Glasgow, KY 42141 Carvedilol Tab USP 6.25 mg LOT 8388- 0093013505</p>	<p>Pkg by Vangard, Glasgow, KY 42141 Carvedilol Tab USP 6.25 mg LOT 8388- 0093013505</p>
<p>Pkg by Vangard, Glasgow, KY 42141 Carvedilol Tab USP 6.25 mg LOT 8388- 0093013505</p>	<p>Pkg by Vangard, Glasgow, KY 42141 Carvedilol Tab USP 6.25 mg LOT 8388- 0093013505</p>	<p>Pkg by Vangard, Glasgow, KY 42141 Carvedilol Tab USP 6.25 mg LOT 8388- 0093013505</p>	<p>Pkg by Vangard, Glasgow, KY 42141 Carvedilol Tab USP 6.25 mg LOT 8388- 0093013505</p>
<p>Pkg by Vangard, Glasgow, KY 42141 Carvedilol Tab USP 6.25 mg LOT 8388- 0093013505</p>	<p>Pkg by Vangard, Glasgow, KY 42141 Carvedilol Tab USP 6.25 mg LOT 8388- 0093013505</p>	<p>Pkg by Vangard, Glasgow, KY 42141 Carvedilol Tab USP 6.25 mg LOT 8388- 0093013505</p>	<p>Pkg by Vangard, Glasgow, KY 42141 Carvedilol Tab USP 6.25 mg LOT 8388- 0093013505</p>
<p>Pkg by Vangard, Glasgow, KY 42141 Carvedilol Tab USP 6.25 mg LOT 8388- 0093013505</p>	<p>Pkg by Vangard, Glasgow, KY 42141 Carvedilol Tab USP 6.25 mg LOT 8388- 0093013505</p>	<p>Pkg by Vangard, Glasgow, KY 42141 Carvedilol Tab USP 6.25 mg LOT 8388- 0093013505</p>	<p>Pkg by Vangard, Glasgow, KY 42141 Carvedilol Tab USP 6.25 mg LOT 8388- 0093013505</p>



The overall configuration of this package is a trademark of Omnicare, Inc.

Package/Label Display Panel - 6.25 mg UNIT DOSE

8388-AA-UD1-V01

Pkg By Vanguard, Glasgow, KY 42141
Carvedilol
Tab USP 6.25 mg
LOT 8388-
0093013505

Pkg By Vanguard, Glasgow, KY 42141
Carvedilol
Tab USP 6.25 mg
LOT 8388-
0093013505

Pkg By Vanguard, Glasgow, KY 42141
Carvedilol
Tab USP 6.25 mg
LOT 8388-
0093013505

Pkg By Vanguard, Glasgow, KY 42141
Carvedilol
Tab USP 6.25 mg
LOT 8388-
0093013505

Pkg By Vanguard, Glasgow, KY 42141
Carvedilol
Tab USP 6.25 mg
LOT 8388-
0093013505

Pkg By Vanguard, Glasgow, KY 42141
Carvedilol
Tab USP 6.25 mg
LOT 8388-
0093013505

Pkg By Vanguard, Glasgow, KY 42141
Carvedilol
Tab USP 6.25 mg
LOT 8388-
0093013505

Pkg By Vanguard, Glasgow, KY 42141
Carvedilol
Tab USP 6.25 mg
LOT 8388-
0093013505

Pkg By Vanguard, Glasgow, KY 42141
Carvedilol
Tab USP 6.25 mg
LOT 8388-
0093013505

Pkg By Vanguard, Glasgow, KY 42141
Carvedilol
Tab USP 6.25 mg
LOT 8388-
0093013505

Pkg By Vanguard, Glasgow, KY 42141
Carvedilol
Tab USP 6.25 mg
LOT 8388-
0093013505

Pkg By Vanguard, Glasgow, KY 42141
Carvedilol
Tab USP 6.25 mg
LOT 8388-
0093013505

Pkg By Vanguard, Glasgow, KY 42141
Carvedilol
Tab USP 6.25 mg
LOT 8388-
0093013505

Pkg By Vanguard, Glasgow, KY 42141
Carvedilol
Tab USP 6.25 mg
LOT 8388-
0093013505

Pkg By Vanguard, Glasgow, KY 42141
Carvedilol
Tab USP 6.25 mg
LOT 8388-
0093013505

Pkg By Vanguard, Glasgow, KY 42141
Carvedilol
Tab USP 6.25 mg
LOT 8388-
0093013505

Pkg By Vanguard, Glasgow, KY 42141
Carvedilol
Tab USP 6.25 mg
LOT 8388-
0093013505

Pkg By Vanguard, Glasgow, KY 42141
Carvedilol
Tab USP 6.25 mg
LOT 8388-
0093013505

Pkg By Vanguard, Glasgow, KY 42141
Carvedilol
Tab USP 6.25 mg
LOT 8388-
0093013505

Pkg By Vanguard, Glasgow, KY 42141
Carvedilol
Tab USP 6.25 mg
LOT 8388-
0093013505

Pkg By Vanguard, Glasgow, KY 42141
Carvedilol
Tab USP 6.25 mg
LOT 8388-
0093013505

Pkg By Vanguard, Glasgow, KY 42141
Carvedilol
Tab USP 6.25 mg
LOT 8388-
0093013505

Pkg By Vanguard, Glasgow, KY 42141
Carvedilol
Tab USP 6.25 mg
LOT 8388-
0093013505

Pkg By Vanguard, Glasgow, KY 42141
Carvedilol
Tab USP 6.25 mg
LOT 8388-
0093013505

Pkg By Vanguard, Glasgow, KY 42141
Carvedilol
Tab USP 6.25 mg
LOT 8388-
0093013505

Pkg By Vanguard, Glasgow, KY 42141
Carvedilol
Tab USP 6.25 mg
LOT 8388-
0093013505

Pkg By Vanguard, Glasgow, KY 42141
Carvedilol
Tab USP 6.25 mg
LOT 8388-
0093013505

Pkg By Vanguard, Glasgow, KY 42141
Carvedilol
Tab USP 6.25 mg
LOT 8388-
0093013505

Pkg By Vanguard, Glasgow, KY 42141
Carvedilol
Tab USP 6.25 mg
LOT 8388-
0093013505

Pkg By Vanguard, Glasgow, KY 42141
Carvedilol
Tab USP 6.25 mg
LOT 8388-
0093013505

<p>6 8388-AA-UD1-V01</p>		<p>4</p>		<p>3</p>		<p>2</p>		<p>1</p>	
<p>VLN NDC 0615-8388-30 Carvedilol Tablets USP 6.25 mg</p>					<p>VLN NDC 0615-8388-30 Carvedilol Tablets USP 6.25 mg</p>				
<p>QTY 30</p>					<p>FOR INSTITUTIONAL USE ONLY</p>				
<p>Rx only</p>					<p>QTY LOT: 30 EXP:</p>				
<p>STORE AT 20°-25°C (68°-77°F) (SEE USP CONTROLLED ROOM TEMPERATURE)</p>					<p>Manufactured By Piramal for Teva NDC 0090-0135-05 Dosage: See aetnao365.sharepoint.com/sites/omnicare-search/dnucg/StatePages/Home.aspx</p>				
<p>Dispense in a tight, light-resistant container. Protect from moisture.</p>					<p>Repackaged by Vanguard Labs Glasgow, KY 42141</p>				
<p>LOT: EXP:</p>						<p>009301350530</p>		<p>00001-01</p>	

Package/Label Display Panel - 12.5 mg BINGO



VLI NDC 0615-8389-39

Carvedilol
Tabs USP 12.5 mg



LOT 8389-

EXP

8389-AA-39 v00

QTY
30

Mfg By Piramal for
Teva
(NDC 0093-7295-05)
PKG BY VANGUARD
GLASGOW, KY 42141

Rx only

(Teva NDC 0093-7295-05)
Carvedilol
Tabs USP 12.5 mg

Received: _____

31	24	16	8
30	23	15	7
29	22	14	6
28	21	13	5
27	20	12	4
26	19	11	3
25	18	10	2
24	17	9	1

Start Date _____ Start Time _____

STORE AT 20° - 25°C (68° - 77° F)
(SEE USP CONTROLLED ROOM TEMPERATURE)

Dispense in a tight, light-resistant container.
Protect from moisture.

See package insert or label for dosage information
FOR INSTITUTIONAL USE ONLY

			16		8
30	23		15		7
29	22		14		6
28	21		13		5
27	20		12		4
26	19		11		3
25	18		10		2
	24		17		9
					1

<p>Pkg by Vanguard, Glasgow, KY 42141 Carvedilol Tab USP 12.5 mg LOT 8389- 0093729505</p>	<p>Pkg by Vanguard, Glasgow, KY 42141 Carvedilol Tab USP 12.5 mg LOT 8389- 0093729505</p>	<p>Pkg by Vanguard, Glasgow, KY 42141 Carvedilol Tab USP 12.5 mg LOT 8389- 0093729505</p>	<p>8389-AA-B-v01 Vanguard Labs Glasgow, KY 42141 LOT 8389- 0093729505</p>
<p>Pkg by Vanguard, Glasgow, KY 42141 Carvedilol Tab USP 12.5 mg LOT 8389- 0093729505</p>	<p>Pkg by Vanguard, Glasgow, KY 42141 Carvedilol Tab USP 12.5 mg LOT 8389- 0093729505</p>	<p>Pkg by Vanguard, Glasgow, KY 42141 Carvedilol Tab USP 12.5 mg LOT 8389- 0093729505</p>	<p>Pkg by Vanguard, Glasgow, KY 42141 Carvedilol Tab USP 12.5 mg LOT 8389- 0093729505</p>
<p>Pkg by Vanguard, Glasgow, KY 42141 Carvedilol Tab USP 12.5 mg LOT 8389- 0093729505</p>	<p>Pkg by Vanguard, Glasgow, KY 42141 Carvedilol Tab USP 12.5 mg LOT 8389- 0093729505</p>	<p>Pkg by Vanguard, Glasgow, KY 42141 Carvedilol Tab USP 12.5 mg LOT 8389- 0093729505</p>	<p>Pkg by Vanguard, Glasgow, KY 42141 Carvedilol Tab USP 12.5 mg LOT 8389- 0093729505</p>
<p>Pkg by Vanguard, Glasgow, KY 42141 Carvedilol Tab USP 12.5 mg LOT 8389- 0093729505</p>	<p>Pkg by Vanguard, Glasgow, KY 42141 Carvedilol Tab USP 12.5 mg LOT 8389- 0093729505</p>	<p>Pkg by Vanguard, Glasgow, KY 42141 Carvedilol Tab USP 12.5 mg LOT 8389- 0093729505</p>	<p>Pkg by Vanguard, Glasgow, KY 42141 Carvedilol Tab USP 12.5 mg LOT 8389- 0093729505</p>
<p>Pkg by Vanguard, Glasgow, KY 42141 Carvedilol Tab USP 12.5 mg LOT 8389- 0093729505</p>	<p>Pkg by Vanguard, Glasgow, KY 42141 Carvedilol Tab USP 12.5 mg LOT 8389- 0093729505</p>	<p>Pkg by Vanguard, Glasgow, KY 42141 Carvedilol Tab USP 12.5 mg LOT 8389- 0093729505</p>	<p>Pkg by Vanguard, Glasgow, KY 42141 Carvedilol Tab USP 12.5 mg LOT 8389- 0093729505</p>
<p>Pkg by Vanguard, Glasgow, KY 42141 Carvedilol Tab USP 12.5 mg LOT 8389- 0093729505</p>	<p>Pkg by Vanguard, Glasgow, KY 42141 Carvedilol Tab USP 12.5 mg LOT 8389- 0093729505</p>	<p>Pkg by Vanguard, Glasgow, KY 42141 Carvedilol Tab USP 12.5 mg LOT 8389- 0093729505</p>	<p>Pkg by Vanguard, Glasgow, KY 42141 Carvedilol Tab USP 12.5 mg LOT 8389- 0093729505</p>
<p>Pkg by Vanguard, Glasgow, KY 42141 Carvedilol Tab USP 12.5 mg LOT 8389- 0093729505</p>	<p>Pkg by Vanguard, Glasgow, KY 42141 Carvedilol Tab USP 12.5 mg LOT 8389- 0093729505</p>	<p>Pkg by Vanguard, Glasgow, KY 42141 Carvedilol Tab USP 12.5 mg LOT 8389- 0093729505</p>	<p>Pkg by Vanguard, Glasgow, KY 42141 Carvedilol Tab USP 12.5 mg LOT 8389- 0093729505</p>



The overall configuration of this package is a trademark of Omnicare, Inc.

Package/Label Display Panel - 12.5 mg UNIT DOSE

8389-AA-UD1-v01

Pkg By Vanguard, Glasgow, KY 42141
Carvedilol
Tab USP 12.5 mg
LOT 8389-
0093729505

Pkg By Vanguard, Glasgow, KY 42141
Carvedilol
Tab USP 12.5 mg
LOT 8389-
0093729505

Pkg By Vanguard, Glasgow, KY 42141
Carvedilol
Tab USP 12.5 mg
LOT 8389-
0093729505

Pkg By Vanguard, Glasgow, KY 42141
Carvedilol
Tab USP 12.5 mg
LOT 8389-
0093729505

Pkg By Vanguard, Glasgow, KY 42141
Carvedilol
Tab USP 12.5 mg
LOT 8389-
0093729505

Pkg By Vanguard, Glasgow, KY 42141
Carvedilol
Tab USP 12.5 mg
LOT 8389-
0093729505

Pkg By Vanguard, Glasgow, KY 42141
Carvedilol
Tab USP 12.5 mg
LOT 8389-
0093729505

Pkg By Vanguard, Glasgow, KY 42141
Carvedilol
Tab USP 12.5 mg
LOT 8389-
0093729505

Pkg By Vanguard, Glasgow, KY 42141
Carvedilol
Tab USP 12.5 mg
LOT 8389-
0093729505

Pkg By Vanguard, Glasgow, KY 42141
Carvedilol
Tab USP 12.5 mg
LOT 8389-
0093729505

Pkg By Vanguard, Glasgow, KY 42141
Carvedilol
Tab USP 12.5 mg
LOT 8389-
0093729505

Pkg By Vanguard, Glasgow, KY 42141
Carvedilol
Tab USP 12.5 mg
LOT 8389-
0093729505

Pkg By Vanguard, Glasgow, KY 42141
Carvedilol
Tab USP 12.5 mg
LOT 8389-
0093729505

Pkg By Vanguard, Glasgow, KY 42141
Carvedilol
Tab USP 12.5 mg
LOT 8389-
0093729505

Pkg By Vanguard, Glasgow, KY 42141
Carvedilol
Tab USP 12.5 mg
LOT 8389-
0093729505

Pkg By Vanguard, Glasgow, KY 42141
Carvedilol
Tab USP 12.5 mg
LOT 8389-
0093729505

Pkg By Vanguard, Glasgow, KY 42141
Carvedilol
Tab USP 12.5 mg
LOT 8389-
0093729505

Pkg By Vanguard, Glasgow, KY 42141
Carvedilol
Tab USP 12.5 mg
LOT 8389-
0093729505

Pkg By Vanguard, Glasgow, KY 42141
Carvedilol
Tab USP 12.5 mg
LOT 8389-
0093729505

Pkg By Vanguard, Glasgow, KY 42141
Carvedilol
Tab USP 12.5 mg
LOT 8389-
0093729505

Pkg By Vanguard, Glasgow, KY 42141
Carvedilol
Tab USP 12.5 mg
LOT 8389-
0093729505

Pkg By Vanguard, Glasgow, KY 42141
Carvedilol
Tab USP 12.5 mg
LOT 8389-
0093729505

Pkg By Vanguard, Glasgow, KY 42141
Carvedilol
Tab USP 12.5 mg
LOT 8389-
0093729505

Pkg By Vanguard, Glasgow, KY 42141
Carvedilol
Tab USP 12.5 mg
LOT 8389-
0093729505

Pkg By Vanguard, Glasgow, KY 42141
Carvedilol
Tab USP 12.5 mg
LOT 8389-
0093729505



Pkg By Vanguard, Glasgow, KY 42141
Carvedilol
Tab USP 12.5 mg
LOT 8389-
0093729505

Pkg By Vanguard, Glasgow, KY 42141
Carvedilol
Tab USP 12.5 mg
LOT 8389-
0093729505

Pkg By Vanguard, Glasgow, KY 42141
Carvedilol
Tab USP 12.5 mg
LOT 8389-
0093729505

Pkg By Vanguard, Glasgow, KY 42141
Carvedilol
Tab USP 12.5 mg
LOT 8389-
0093729505

Pkg By Vanguard, Glasgow, KY 42141
Carvedilol
Tab USP 12.5 mg
LOT 8389-
0093729505

<p>VLN NDC 0615-8389-30 Carvedilol Tablets USP 12.5 mg</p>		<p>VLN NDC 0615-8389-30 Carvedilol Tablets USP 12.5 mg</p>	
<p>QTY 30</p>		<p>FOR INSTITUTIONAL USE ONLY</p>	
<p>Rx only</p>		<p>QTY LOT: 30</p>	
<p>STORE AT 20°-25°C (68°-77°F) (SEE USP CONTROLLED ROOM TEMPERATURE)</p>		<p>EXP:</p>	
<p>Dispense in a tight, light-resistant container. Protect from moisture.</p>		<p>Manufactured By Piramal for Teva NDC 0090-7295-05 Dosage: See aetnao365.sharepoint.com/sites/omnicera-search/dnucps/SitePages/Home.aspx</p>	
<p>LOT: EXP:</p>		<p>Repackaged by Vanguard Labs Glasgow, KY 42141</p>	
			
<p>8389-AA 4 00001-01</p>		<p>00937295030</p>	

Package/Label Display Panel - 25 mg BINGO



VLI NDC 0615-8390-39

Carvedilol
Tabs USP 25 mg



LOT 8390-
EXP

8390-AA-39 v00

QTY
30

Mfg By Piramal for
Teva
(NDC 0093-7296-05)
PKG BY VANGAIRD
GLASGOW, KY 42141

Rx only

(Teva NDC 0093-7296-05)
Carvedilol
Tabs USP 25 mg

Received: _____

31	24	16	8
30	23	15	7
29	22	14	6
28	21	13	5
27	20	12	4
26	19	11	3
25	18	10	2
24	17	9	1

Start Date _____ Start Time _____

STORE AT 20° - 25°C (68° - 77° F)
(SEE USP CONTROLLED ROOM TEMPERATURE)

Dispense in a tight, light-resistant container.
Protect from moisture.

See package insert or label for dosage information
FOR INSTITUTIONAL USE ONLY

16	8		
30	23	15	7
29	22	14	6
28	21	13	5
27	20	12	4
26	19	11	3
25	18	10	2
24	17	9	1

<p>Pkg by Vanguard, Glasgow, KY 42141</p> <p>Carvedilol Tab USP 25 mg LOT 8390-</p> <p>0093729605</p>	<p>Pkg by Vanguard, Glasgow, KY 42141</p> <p>Carvedilol Tab USP 25 mg LOT 8390-</p> <p>0093729605</p>	<p>Pkg by Vanguard, Glasgow, KY 42141</p> <p>Carvedilol Tab USP 25 mg LOT 8390-</p> <p>0093729605</p>	<p>8390-AA-B-v01 Vanguard Labs Glasgow, KY 42141</p> <p>LOT 8390-</p> <p>0093729605</p>
<p>Pkg by Vanguard, Glasgow, KY 42141</p> <p>Carvedilol Tab USP 25 mg LOT 8390-</p> <p>0093729605</p>	<p>Pkg by Vanguard, Glasgow, KY 42141</p> <p>Carvedilol Tab USP 25 mg LOT 8390-</p> <p>0093729605</p>	<p>Pkg by Vanguard, Glasgow, KY 42141</p> <p>Carvedilol Tab USP 25 mg LOT 8390-</p> <p>0093729605</p>	<p>Pkg by Vanguard, Glasgow, KY 42141</p> <p>Carvedilol Tab USP 25 mg LOT 8390-</p> <p>0093729605</p>
<p>Pkg by Vanguard, Glasgow, KY 42141</p> <p>Carvedilol Tab USP 25 mg LOT 8390-</p> <p>0093729605</p>	<p>Pkg by Vanguard, Glasgow, KY 42141</p> <p>Carvedilol Tab USP 25 mg LOT 8390-</p> <p>0093729605</p>	<p>Pkg by Vanguard, Glasgow, KY 42141</p> <p>Carvedilol Tab USP 25 mg LOT 8390-</p> <p>0093729605</p>	<p>Pkg by Vanguard, Glasgow, KY 42141</p> <p>Carvedilol Tab USP 25 mg LOT 8390-</p> <p>0093729605</p>
<p>Pkg by Vanguard, Glasgow, KY 42141</p> <p>Carvedilol Tab USP 25 mg LOT 8390-</p> <p>0093729605</p>	<p>Pkg by Vanguard, Glasgow, KY 42141</p> <p>Carvedilol Tab USP 25 mg LOT 8390-</p> <p>0093729605</p>	<p>Pkg by Vanguard, Glasgow, KY 42141</p> <p>Carvedilol Tab USP 25 mg LOT 8390-</p> <p>0093729605</p>	<p>Pkg by Vanguard, Glasgow, KY 42141</p> <p>Carvedilol Tab USP 25 mg LOT 8390-</p> <p>0093729605</p>
<p>Pkg by Vanguard, Glasgow, KY 42141</p> <p>Carvedilol Tab USP 25 mg LOT 8390-</p> <p>0093729605</p>	<p>Pkg by Vanguard, Glasgow, KY 42141</p> <p>Carvedilol Tab USP 25 mg LOT 8390-</p> <p>0093729605</p>	<p>Pkg by Vanguard, Glasgow, KY 42141</p> <p>Carvedilol Tab USP 25 mg LOT 8390-</p> <p>0093729605</p>	<p>Pkg by Vanguard, Glasgow, KY 42141</p> <p>Carvedilol Tab USP 25 mg LOT 8390-</p> <p>0093729605</p>
<p>Pkg by Vanguard, Glasgow, KY 42141</p> <p>Carvedilol Tab USP 25 mg LOT 8390-</p> <p>0093729605</p>	<p>Pkg by Vanguard, Glasgow, KY 42141</p> <p>Carvedilol Tab USP 25 mg LOT 8390-</p> <p>0093729605</p>	<p>Pkg by Vanguard, Glasgow, KY 42141</p> <p>Carvedilol Tab USP 25 mg LOT 8390-</p> <p>0093729605</p>	<p>Pkg by Vanguard, Glasgow, KY 42141</p> <p>Carvedilol Tab USP 25 mg LOT 8390-</p> <p>0093729605</p>
<p>Pkg by Vanguard, Glasgow, KY 42141</p> <p>Carvedilol Tab USP 25 mg LOT 8390-</p> <p>0093729605</p>	<p>Pkg by Vanguard, Glasgow, KY 42141</p> <p>Carvedilol Tab USP 25 mg LOT 8390-</p> <p>0093729605</p>	<p>Pkg by Vanguard, Glasgow, KY 42141</p> <p>Carvedilol Tab USP 25 mg LOT 8390-</p> <p>0093729605</p>	<p>Pkg by Vanguard, Glasgow, KY 42141</p> <p>Carvedilol Tab USP 25 mg LOT 8390-</p> <p>0093729605</p>

Omnicare The overall configuration of this package is a trademark of Omnicare, Inc.

Package/Label Display Panel - 25 mg UNIT DOSE

Pkg By Vanguard, Glasgow, KY 42141
Carvedilol
 Tab USP 25 mg
 LOT 8390-

 0093729605

Pkg By Vanguard, Glasgow, KY 42141
Carvedilol
 Tab USP 25 mg
 LOT 8390-

 0093729605

Pkg By Vanguard, Glasgow, KY 42141
Carvedilol
 Tab USP 25 mg
 LOT 8390-

 0093729605

Pkg By Vanguard, Glasgow, KY 42141
Carvedilol
 Tab USP 25 mg
 LOT 8390-

 0093729605

Pkg By Vanguard, Glasgow, KY 42141
Carvedilol
 Tab USP 25 mg
 LOT 8390-

 0093729605

Pkg By Vanguard, Glasgow, KY 42141
Carvedilol
 Tab USP 25 mg
 LOT 8390-

 0093729605

Pkg By Vanguard, Glasgow, KY 42141
Carvedilol
 Tab USP 25 mg
 LOT 8390-

 0093729605

Pkg By Vanguard, Glasgow, KY 42141
Carvedilol
 Tab USP 25 mg
 LOT 8390-

 0093729605

Pkg By Vanguard, Glasgow, KY 42141
Carvedilol
 Tab USP 25 mg
 LOT 8390-

 0093729605

Pkg By Vanguard, Glasgow, KY 42141
Carvedilol
 Tab USP 25 mg
 LOT 8390-

 0093729605

Pkg By Vanguard, Glasgow, KY 42141
Carvedilol
 Tab USP 25 mg
 LOT 8390-

 0093729605

Pkg By Vanguard, Glasgow, KY 42141
Carvedilol
 Tab USP 25 mg
 LOT 8390-

 0093729605

Pkg By Vanguard, Glasgow, KY 42141
Carvedilol
 Tab USP 25 mg
 LOT 8390-

 0093729605

Pkg By Vanguard, Glasgow, KY 42141
Carvedilol
 Tab USP 25 mg
 LOT 8390-

 0093729605

Pkg By Vanguard, Glasgow, KY 42141
Carvedilol
 Tab USP 25 mg
 LOT 8390-

 0093729605

Pkg By Vanguard, Glasgow, KY 42141
Carvedilol
 Tab USP 25 mg
 LOT 8390-

 0093729605

Pkg By Vanguard, Glasgow, KY 42141
Carvedilol
 Tab USP 25 mg
 LOT 8390-

 0093729605

Pkg By Vanguard, Glasgow, KY 42141
Carvedilol
 Tab USP 25 mg
 LOT 8390-

 0093729605

Pkg By Vanguard, Glasgow, KY 42141
Carvedilol
 Tab USP 25 mg
 LOT 8390-

 0093729605

Pkg By Vanguard, Glasgow, KY 42141
Carvedilol
 Tab USP 25 mg
 LOT 8390-

 0093729605

Pkg By Vanguard, Glasgow, KY 42141
Carvedilol
 Tab USP 25 mg
 LOT 8390-

 0093729605

Pkg By Vanguard, Glasgow, KY 42141
Carvedilol
 Tab USP 25 mg
 LOT 8390-

 0093729605

Pkg By Vanguard, Glasgow, KY 42141
Carvedilol
 Tab USP 25 mg
 LOT 8390-

 0093729605

Pkg By Vanguard, Glasgow, KY 42141
Carvedilol
 Tab USP 25 mg
 LOT 8390-

 0093729605

Pkg By Vanguard, Glasgow, KY 42141
Carvedilol
 Tab USP 25 mg
 LOT 8390-

 0093729605

Pkg By Vanguard, Glasgow, KY 42141
Carvedilol
 Tab USP 25 mg
 LOT 8390-

 0093729605

Pkg By Vanguard, Glasgow, KY 42141
Carvedilol
 Tab USP 25 mg
 LOT 8390-

 0093729605

Pkg By Vanguard, Glasgow, KY 42141
Carvedilol
 Tab USP 25 mg
 LOT 8390-

 0093729605



Pkg By Vanguard, Glasgow, KY 42141
Carvedilol
 Tab USP 25 mg
 LOT 8390-

 0093729605

Pkg By Vanguard, Glasgow, KY 42141
Carvedilol
 Tab USP 25 mg
 LOT 8390-

 0093729605

8390-AA-UD1-V01

VLI NDC 0615-8390-30 Carvedilol Tablets USP 25 mg QTY 30 Rx only STORE AT 20°-25°C (68°-77°F) (SEE USP CONTROLLED ROOM TEMPERATURE) Dispense in a tight, light-resistant container. Protect from moisture. LOT: EXP:	 8390-AA 6 00001-01	VLI NDC 0615-8390-30 Carvedilol Tablets USP 25 mg FOR INSTITUTIONAL USE ONLY QTY LOT: 30 EXP: Manufactured By Piramal for Teva NDC 0090-7296-05 Dosage: See aetnao365.sharepoint.com/sites/omnicare-search/drugs/StatePages/Home.aspx Repackaged by Vanguard Labs Glasgow, KY 42141  009372960530
---	--	---

CARVEDILOL

carvedilol tablet, film coated

Product Information

Product Type	HUMAN PRESCRIPTION DRUG	Item Code (Source)	NDC:0615-8387(NDC:0093-0051)
Route of Administration	ORAL		

Active Ingredient/Active Moiety

Ingredient Name	Basis of Strength	Strength
CARVEDILOL (UNII: 0K47UL67F2) (CARVEDILOL - UNII:0K47UL67F2)	CARVEDILOL	3.125 mg

Inactive Ingredients

Ingredient Name	Strength
SILICON DIOXIDE (UNII: ETJ7Z6XBU4)	
CROSPVIDONE (15 MPA.S AT 5%) (UNII: 68401960MK)	
HYPROMELLOSE 2910 (3 MPA.S) (UNII: 0VUT3PMY82)	

HYPROMELLOSE 2910 (5 MPA.S) (UNII: R75537T0T4)	
LACTOSE MONOHYDRATE (UNII: EWQ57Q8I5X)	
MAGNESIUM STEARATE (UNII: 70097M6I30)	
POLYETHYLENE GLYCOL 400 (UNII: B697894SGQ)	
POLYSORBATE 80 (UNII: 6OZP39ZG8H)	
POVIDONE K30 (UNII: U725QWY32X)	
TITANIUM DIOXIDE (UNII: 15FIX9V2JP)	

Product Characteristics

Color	white	Score	no score
Shape	OVAL (elliptical-shaped)	Size	7mm
Flavor		Imprint Code	TV;51
Contains			

Packaging

#	Item Code	Package Description	Marketing Start Date	Marketing End Date
1	NDC:0615-8387-39	30 in 1 BLISTER PACK; Type 0: Not a Combination Product	02/23/2021	
2	NDC:0615-8387-30	6 in 1 BOX, UNIT-DOSE	03/18/2021	12/31/2023
2		5 in 1 BLISTER PACK; Type 0: Not a Combination Product		
3	NDC:0615-8387-05	15 in 1 BLISTER PACK; Type 0: Not a Combination Product	08/08/2023	

Marketing Information

Marketing Category	Application Number or Monograph Citation	Marketing Start Date	Marketing End Date
ANDA	ANDA076373	09/06/2007	

CARVEDILOL

carvedilol tablet, film coated

Product Information

Product Type	HUMAN PRESCRIPTION DRUG	Item Code (Source)	NDC:0615-8388(NDC:0093-0135)
Route of Administration	ORAL		

Active Ingredient/Active Moiety

Ingredient Name	Basis of Strength	Strength
CARVEDILOL (UNII: 0K47UL67F2) (CARVEDILOL - UNII:0K47UL67F2)	CARVEDILOL	6.25 mg

Inactive Ingredients

Ingredient Name	Strength
SILICON DIOXIDE (UNII: ETJ7Z6XBU4)	
CROSPVIDONE (15 MPA.S AT 5%) (UNII: 68401960MK)	
HYPROMELLOSE 2910 (3 MPA.S) (UNII: 0VUT3PMY82)	
HYPROMELLOSE 2910 (5 MPA.S) (UNII: R75537T0T4)	
LACTOSE MONOHYDRATE (UNII: EWQ57Q8I5X)	
MAGNESIUM STEARATE (UNII: 70097M6I30)	
POLYETHYLENE GLYCOL 400 (UNII: B697894SGQ)	
POLYSORBATE 80 (UNII: 6OZP39ZG8H)	
POVIDONE K30 (UNII: U725QWY32X)	
TITANIUM DIOXIDE (UNII: 15FIX9V2JP)	

Product Characteristics

Color	white	Score	no score
Shape	OVAL (elliptical-shaped)	Size	9mm
Flavor		Imprint Code	TV;135
Contains			

Packaging

#	Item Code	Package Description	Marketing Start Date	Marketing End Date
1	NDC:0615-8388-39	30 in 1 BLISTER PACK; Type 0: Not a Combination Product	02/16/2021	
2	NDC:0615-8388-30	6 in 1 BOX, UNIT-DOSE	02/11/2021	
2		5 in 1 BLISTER PACK; Type 0: Not a Combination Product		

Marketing Information

Marketing Category	Application Number or Monograph Citation	Marketing Start Date	Marketing End Date
ANDA	ANDA076373	09/06/2007	

CARVEDILOL

carvedilol tablet, film coated

Product Information

Product Type	HUMAN PRESCRIPTION DRUG	Item Code (Source)	NDC:0615-8389(NDC:0093-7295)
Route of Administration	ORAL		

Active Ingredient/Active Moiety

Ingredient Name	Basis of Strength	Strength
CARVEDILOL (UNII: 0K47UL67F2) (CARVEDILOL - UNII:0K47UL67F2)	CARVEDILOL	12.5 mg

Inactive Ingredients

Ingredient Name	Strength
SILICON DIOXIDE (UNII: ETJ7Z6XBU4)	
CROSPROVIDONE (15 MPA.S AT 5%) (UNII: 68401960MK)	
HYPROMELLOSE 2910 (3 MPA.S) (UNII: 0VUT3PMY82)	
HYPROMELLOSE 2910 (5 MPA.S) (UNII: R75537T0T4)	
LACTOSE MONOHYDRATE (UNII: EWQ57Q8I5X)	
MAGNESIUM STEARATE (UNII: 70097M6I30)	
POLYETHYLENE GLYCOL 400 (UNII: B697894SGQ)	
POLYSORBATE 80 (UNII: 6OZP39ZG8H)	
POVIDONE K30 (UNII: U725QWY32X)	
TITANIUM DIOXIDE (UNII: 15FIX9V2JP)	

Product Characteristics

Color	white	Score	no score
Shape	OVAL (elliptical-shaped)	Size	11mm
Flavor		Imprint Code	TV;7295
Contains			

Packaging

#	Item Code	Package Description	Marketing Start Date	Marketing End Date
1	NDC:0615-8389-39	30 in 1 BLISTER PACK; Type 0: Not a Combination Product	02/19/2021	
2	NDC:0615-8389-30	6 in 1 BOX, UNIT-DOSE	02/10/2021	
2		5 in 1 BLISTER PACK; Type 0: Not a Combination Product		

Marketing Information

Marketing Category	Application Number or Monograph Citation	Marketing Start Date	Marketing End Date
ANDA	ANDA076373	09/06/2007	

CARVEDILOL

carvedilol tablet, film coated

Product Information

Product Type	HUMAN PRESCRIPTION DRUG	Item Code (Source)	NDC:0615-8390(NDC:0093-7296)
--------------	-------------------------	--------------------	------------------------------

Route of Administration ORAL

Active Ingredient/Active Moiety

Ingredient Name	Basis of Strength	Strength
CARVEDILOL (UNII: 0K47UL67F2) (CARVEDILOL - UNII:0K47UL67F2)	CARVEDILOL	25 mg

Inactive Ingredients

Ingredient Name	Strength
SILICON DIOXIDE (UNII: ETJ7Z6XBU4)	
CROSPVIDONE (15 MPA.S AT 5%) (UNII: 68401960MK)	
HYPROMELLOSE 2910 (3 MPA.S) (UNII: 0VUT3PMY82)	
HYPROMELLOSE 2910 (5 MPA.S) (UNII: R75537T0T4)	
LACTOSE MONOHYDRATE (UNII: EWQ57Q8I5X)	
MAGNESIUM STEARATE (UNII: 70097M6I30)	
POLYETHYLENE GLYCOL 400 (UNII: B697894SGQ)	
POLYSORBATE 80 (UNII: 6OZP39ZG8H)	
POVIDONE K30 (UNII: U725QWY32X)	
TITANIUM DIOXIDE (UNII: 15FIX9V2JP)	

Product Characteristics

Color	white	Score	no score
Shape	OVAL (elliptical-shaped)	Size	14mm
Flavor		Imprint Code	TV;7296
Contains			

Packaging

#	Item Code	Package Description	Marketing Start Date	Marketing End Date
1	NDC:0615-8390-39	30 in 1 BLISTER PACK; Type 0: Not a Combination Product	02/11/2021	
2	NDC:0615-8390-30	6 in 1 BOX, UNIT-DOSE	02/10/2021	
2		5 in 1 BLISTER PACK; Type 0: Not a Combination Product		

Marketing Information

Marketing Category	Application Number or Monograph Citation	Marketing Start Date	Marketing End Date
ANDA	ANDA076373	09/06/2007	

Labeler - NCS HealthCare of KY, LLC dba Vanguard Labs (050052943)

Establishment

Name	Address	ID/FEI	Business Operations
NCS HealthCare of KY, LLC dba Vanguard Labs		050052943	repack(0615-8387, 0615-8388, 0615-8389, 0615-8390)

Revised: 8/2023

NCS HealthCare of KY, LLC dba Vanguard Labs