

**CHERRY COUGH DROPS- menthol lozenge**  
**Walmart Stores Inc.**

*Disclaimer: Most OTC drugs are not reviewed and approved by FDA, however they may be marketed if they comply with applicable regulations and policies. FDA has not evaluated whether this product complies.*

-----  
**Menthol 5.8mg**

**Active ingredient (in each drop)**

Menthol 5.8 mg

**Purpose**

Cough suppressant / Oral anesthetic

Uses temporarily relieves:

cough as may occur with a cold

occasional minor irritation and sore throat

**Warnings**

**Sore throat warning:** if sore throat is severe, persists for more than 2 days, is accompanied or followed by fever, headache, rash, swelling, nausea, or vomiting, consult a doctor promptly. If sore mouth symptoms do not improve in 7 days, see your dentist or doctor promptly. These symptoms may be serious.

**Ask a doctor before use if you have:**

- persistent or chronic cough such as occurs with smoking, asthma, or emphysema
- cough accompanied by excessive phlegm (mucus)

**Stop use and ask a doctor if**

- cough persists for more than 7 days. tends to recur, or is accompanied by fever, rash, or persistent headache. These could be signs of a serious condition.
- sore throat is severe, or irritation, pain, or redness lasts or worsens
- sore mouth does not improve in 7 days

**If pregnant or breast-feeding,** ask a health professional before use.

**Keep out of reach of children.**

Directions

adults and children 5 years and over - dissolve 1 lozenge slowly in mouth. Repeat every 2 hours as needed or as directed by a doctor.

children under 5 years - ask a doctor

**Other information**

10 calories per drop

**Inactive ingredients:** Corn starch, corn syrup, eucalyptus oil, FD&C red no. 40, glycerin, medium chain triglycerides, natural & artificial flavors, soybean oil, sucrose, and

water.

Questions? 1-888-287-1915

Do not use if bag  
is torn or open



**RECLOSABLE BAG**

← **TEAR HERE** - - - - - **TEAR HERE** →

NDC 49035-012-30

**equate™**

**Compare to** HALLS® active ingredient\*

# Cherry Cough Drops

Menthol-cough suppressant/  
Oral anesthetic

- Soothes sore throat pain
- Temporarily relieves coughs



Gluten-Free

ACTUAL SIZE



30 DROPS



PN-502189

DISTRIBUTED BY: Wal-Mart Stores, Inc.,  
Bentonville, AR 72716  
\*This product is not manufactured or distributed by  
Mondelēz Global LLC, owner of the registered  
trademark HALLS®.

Satisfaction guaranteed -  
Or we'll replace it or give  
you your money back.  
For questions or comments  
or to report an undesired  
reaction or side effect,  
please call 1-888-287-1915.



**Directions**  
adults and children  
5 years and over  
dissolve 1 lozenge slowly in  
mouth. Repeat every 2 hours  
as needed or as directed by  
a doctor.  
children under 5 years  
ask a doctor

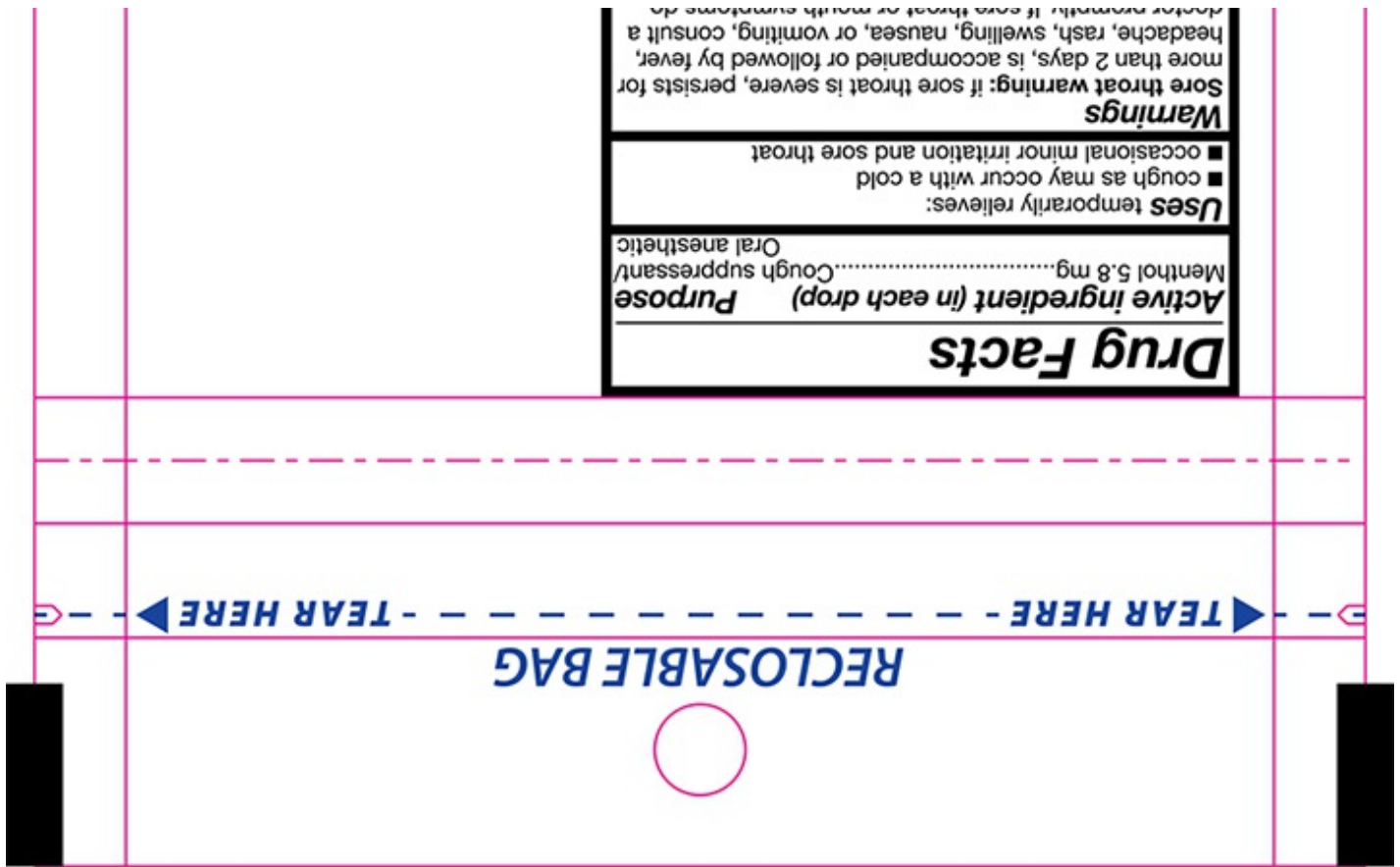
**Stop use and ask doctor if**  
■ persistent or chronic cough such as occurs with  
smoking, asthma, or emphysema  
■ cough accompanied by excessive phlegm (mucus)  
■ cough persists for more than 7 days, tends to recur, or  
is accompanied by fever, rash, or persistent headache.  
These could be signs of a serious condition.  
■ sore throat or mouth is severe, or irritation, pain or  
redness lasts or worsens  
■ sore throat or mouth does not improve in 7 days

**If pregnant or breast-feeding, ask a health professional  
before use. Keep out of reach of children.**

**Other information** ■ 10 calories per drop

**Inactive ingredients** Corn starch, corn syrup,  
eucalyptus oil, FD&C red no. 40, glycerin, medium chain  
triglycerides, natural & artificial flavors, soybean oil,  
sucrose and water.

**Questions? 1-888-287-1915**



## CHERRY COUGH DROPS

menthol lozenge

### Product Information

<b>Product Type</b>	HUMAN OTC DRUG	<b>Item Code (Source)</b>	NDC:49035-012
<b>Route of Administration</b>	ORAL		

### Active Ingredient/Active Moiety

Ingredient Name	Basis of Strength	Strength
MENTHOL (UNII: L7T10EIP3A) (MENTHOL - UNII:L7T10EIP3A)	MENTHOL	5.8 mg

### Inactive Ingredients

Ingredient Name	Strength
WATER (UNII: 059QF0KO0R)	

### Product Characteristics

<b>Color</b>	red	<b>Score</b>	no score
<b>Shape</b>	OVAL	<b>Size</b>	16mm
<b>Flavor</b>	CHERRY	<b>Imprint Code</b>	B
<b>Contains</b>			



## Packaging

#	Item Code	Package Description	Marketing Start Date	Marketing End Date
1	NDC:49035-012-30	30 in 1 BAG; Type 0: Not a Combination Product	04/26/2016	



## Marketing Information

Marketing Category	Application Number or Monograph Citation	Marketing Start Date	Marketing End Date
OTC monograph final	part341	04/26/2016	

**Labeler** - Walmart Stores Inc. (051957769)

**Registrant** - Bestco Inc. (002149136)

**Establishment**

Name	Address	ID/FEI	Business Operations
Bestco Inc.		002149136	manufacture(49035-012)

Revised: 10/2023

Walmart Stores Inc.