

IVERMECTIN- ivermectin lotion
CVS Pharmacy

CVS Ivermectin Lotion, 0.5%

Drug Facts

Active ingredient

Ivermectin 0.5%

Purpose

Lice treatment

Use

treats head lice

Warnings

For external use only. Use only on the scalp.

Do not use

- on children under 6 months of age
- near the eyes
- inside the nose, ear, mouth, or vagina
- on lice in eyebrows or eyelashes. See a doctor if lice are present in these areas.

Ask a doctor before use if you

- have any skin conditions or sensitivities
- are pregnant or plan to become pregnant. It is not known if product can harm your unborn baby.
- are currently or planning to breastfeed. Avoid getting product on your breast to help prevent contact by your baby.

When using this product

- keep eyes tightly closed and protect eyes with a washcloth or towel
- if product gets into eyes, gently flush with water
- eye redness, soreness, or irritation can occur
- dandruff, dry skin, or burning sensation of the skin can occur

Stop use and ask a doctor if

- breathing difficulty occurs
- eye irritation occurs
- skin or scalp irritation continues or infection occurs
- rash develops

If pregnant or breastfeeding, ask a health professional before use.

Keep out of reach of children.

If swallowed, get medical help or contact a Poison Control Center (1-800-222-1222) right away.

Directions

Important: Read warnings before use

- **children 6 months of age to under 12 years of age: an adult should supervise use**
- **adults and children 6 months of age and over:**

Inspect

- all household members should be checked by another person for lice and/or nits (eggs)
- use a magnifying glass in bright light to help you see the lice and/or nits (eggs)
- use a tool, such as a comb or two unsharpened pencils to lift and part the hair
- look for tiny nits near the scalp, beginning at the back of the neck and behind the ears
- examine small sections of the hair (1-2 inches wide) at a time
- unlike dandruff, nits stick to the hair. Dandruff should move when lightly touched.
- if either lice or nits (eggs) are found, treat with product

Treat

- your hair and scalp must be **DRY** before applying product
- use the top of cap to break the tamper seal on the tube
- apply product directly to dry hair and scalp
- completely cover your scalp and hair closest to the scalp first, and then apply outwards towards the ends of your hair
- use only amount needed to completely cover hair and scalp, up to 1 entire tube, and discard the remaining
- rub product throughout your hair
- it is important to completely cover your entire head so that all lice and eggs are exposed to the lotion. Be sure that each hair is coated from the scalp to the tip.

Wait and rinse

- allow product to stay on your hair and scalp for 10 minutes after it has been applied. Use a timer or clock. Start timing after you have completely covered your hair and scalp with product.
- after 10 minutes, rinse product completely from your hair and scalp using only water
- after rinsing, dry and style as usual. Wait 24 hours before applying shampoo.

After treatment

- **wash your hands after applying product**
- nit combing is not necessary when treating with product for it to work, but if desired, a fine-tooth comb or special nit comb may be used to remove dead lice and nits
- this is a single use product. Discard tube after use.

- do not use again on the same person and same lice infestation without talking to a healthcare provider first
- if infestation continues, see a doctor for other treatments
- machine wash any bedding and clothing used by anyone having lice. Machine wash at high temperatures (150°F) and tumble in a hot dryer for 20 minutes.
- after finishing treatment with lice medicine, check everyone in your family for lice after one week. Consider treatment for those who have lice.

Other information

- **TAMPER EVIDENT: DO NOT USE IF THE TAMPER SEAL ON THE TUBE HAS BEEN BROKEN.**
- store at room temperature 68°-77°F (20°-25°C)
- do not freeze
- keep carton and see Consumer Information Leaflet and warnings before use

Inactive ingredients

butylated hydroxyanisole, castor oil, cetyl alcohol, citric acid anhydrous, crodalan AWS, cyclomethicone, glycerin, imidurea, lanolin alcohols, methylparaben, oleyl alcohol, olive oil, propylene glycol, propylparaben, purified water, shea butter, sodium citrate anhydrous, sorbitan tristearate and stearyl alcohol.

Questions?

1-866-923-4914

Distributed by:
CVS Pharmacy, Inc.

One CVS Drive
 Woonsocket, RI 02895

Made in Israel

PRINCIPAL DISPLAY PANEL - 4 OZ (117 g) Carton

NDC 51316-985-08

Ivermectin

Lotion, 0.5%
 Lice Treatment

NET WT 4 OZ (117 g)



PRESCRIPTION STRENGTH

Ivermectin Lotion, 0.5% Lice Treatment

696
00-0525-00
5261184-0625-00



Compare to the
active ingredient
in Sklice®

NDC 51316-985-08

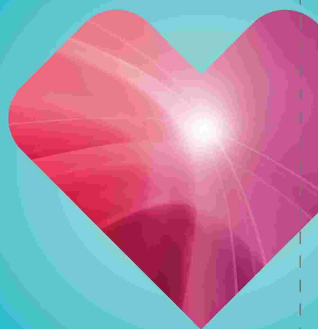


PRESCRIPTION STRENGTH

Ivermectin Lotion, 0.5% Lice Treatment

- No second application required
- One tube, one time, 10 minutes
- Ivermectin lotion kills lice

**NO
COMBING
NEEDED**



INCLUDES: 1 TUBE
NET WT 4 OZ (117 g)

Drug Facts

Active ingredient Purpose
Ivermectin 0.5% Lice treatment

Use treats head lice

Warnings

For external use only. Use only on the scalp.

Do not use

- on children under 6 months of age
- near the eyes
- inside the nose, ear, mouth, or vagina
- on lice in eyebrows or eyelashes. See a doctor if lice are present in these areas.

Ask a doctor before use if you

- have any skin conditions or sensitivities
- are pregnant or plan to become pregnant. It is not known if product can harm your unborn baby.
- are currently or planning to breastfeed. Avoid getting product on your breast to help prevent contact by your baby.

When using this product

- keep eyes tightly closed and protect eyes with a washcloth or towel
- if product gets into eyes, gently flush with water
- eye redness, soreness, or irritation can occur
- dandruff, dry skin, or burning sensation of the skin can occur

Stop use and ask a doctor if

- breathing difficulty occurs
- eye irritation occurs
- skin or scalp irritation continues or infection occurs
- rash develops

If pregnant or breastfeeding, ask a health professional before use.

Keep out of reach of children.

If swallowed, get medical help or contact a Poison Control Center (1-800-222-1222) right away.

#699654



Drug Facts (continued)

Directions

Important: Read warnings before use

- children 6 months of age to under 12 years of age: an adult should supervise use
- adults and children 6 months of age and over:

Inspect

- all household members should be checked by another person for lice and/or nits (eggs)
- use a magnifying glass in bright light to help you see the lice and/or nits (eggs)
- use a tool, such as a comb or two unsharpened pencils to lift and part the hair
- look for tiny nits near the scalp, beginning at the back of the neck and behind the ears
- examine small sections of the hair (1-2 inches wide) at a time
- unlike dandruff, nits stick to the hair. Dandruff should move when lightly touched.
- if either lice or nits (eggs) are found, treat with product

Treat

- your hair and scalp must be **DRY** before applying product
- use the top of cap to break the tamper seal on the tube
- apply product directly to dry hair and scalp
- completely cover your scalp and hair closest to the scalp first, and then apply outwards towards the ends of your hair
- use only amount needed to completely cover hair and scalp, up to 1 entire tube, and discard the remaining
- rub product throughout your hair
- it is important to completely cover your entire head so that all lice and eggs are exposed to the lotion. Be sure that each hair is coated from the scalp to the tip.

Wait and rinse

- allow product to stay on your hair and scalp for 10 minutes after it has been applied. Use a timer or clock. Start timing after you have completely covered your hair and scalp with product.
- after 10 minutes, rinse product completely from your hair and scalp using only water
- after rinsing, dry and style as usual. Wait 24 hours before applying shampoo.

After treatment

- wash your hands after applying product
- nit combing is not necessary when treating with product for it to work, but if desired, a fine-tooth comb or special nit comb may be used to remove dead lice and nits
- this is a single use product. Discard tube after use.
- do not use again on the same person and same lice infestation without talking to a healthcare provider first
- if infestation continues, see a doctor for other treatments
- machine wash any bedding and clothing used by anyone having lice. Machine wash at high temperatures (150°F) and tumble in a hot dryer for 20 minutes.
- after finishing treatment with lice medicine, check everyone in your family for lice after one week. Consider treatment for those who have lice.

Drug Facts (continued)

Other information

- **TAMPER EVIDENT: DO NOT USE IF THE TAMPER SEAL ON THE TUBE HAS BEEN BROKEN.**
- store at room temperature 68°-77°F (20°-25°C)
- do not freeze
- keep carton and see Consumer Information Leaflet and warnings before use

Inactive ingredients

butylated hydroxyanisole, castor oil, cetyl alcohol, citric acid anhydrous, crodalan AWS, cyclomethicone, glycerin, imidurea, lanolin alcohols, methylparaben, oleyl alcohol, olive oil, propylene glycol, propylparaben, purified water, shea butter, sodium citrate anhydrous, sorbitan tristearate and stearyl alcohol.

Questions? 1-866-923-4914

**For single use.
Discard the tube after use.**

*All trademarks are property of their respective owners. This product is not affiliated with the makers/owners of Sklice®.

Distributed by: CVS Pharmacy, Inc.
One CVS Drive, Woonsocket, RI 02895
© 2025 CVS/pharmacy
CVS.com® 1-800-SHOP CVS

Made in Israel
V-38744

100% money back
guaranteed.
CVS.com/returnpolicy



B71

IVERMECTIN

ivermectin lotion

Product Information

Product Type	HUMAN OTC DRUG	Item Code (Source)	NDC:51316-985
Route of Administration	TOPICAL		

Active Ingredient/Active Moiety				
Ingredient Name		Basis of Strength	Strength	
IVERMECTIN (UNII: 8883YP2R6D) (IVERMECTIN - UNII:8883YP2R6D)		IVERMECTIN	5 mg in 1 g	
Inactive Ingredients				
Ingredient Name		Strength		
BUTYLATED HYDROXYANISOLE (UNII: REK4960K2U)				
CASTOR OIL (UNII: D5340Y2I9G)				
CETYL ALCOHOL (UNII: 936JST6JCN)				
ANHYDROUS CITRIC ACID (UNII: XF417D3PSL)				
CYCLOMETHICONE (UNII: NMQ347994Z)				
GLYCERIN (UNII: PDC6A3C0OX)				
IMIDUREA (UNII: M629807ATL)				
LANOLIN ALCOHOLS (UNII: 884C3FA9HE)				
METHYLPARABEN (UNII: A2I8C7HI9T)				
OLEYL ALCOHOL (UNII: 172F2WN8DV)				
OLIVE OIL (UNII: 6UYK2W1W1E)				
PROPYLENE GLYCOL (UNII: 6DC9Q167V3)				
PROPYLPARABEN (UNII: Z8IX2SC1OH)				
WATER (UNII: 059QF0KO0R)				
SHEA BUTTER (UNII: K49155WL9Y)				
ANHYDROUS TRISODIUM CITRATE (UNII: RS7A450LGA)				
SORBITAN TRISTEARATE (UNII: 6LUM696811)				
STEARYL ALCOHOL (UNII: 2KR89I4H1Y)				
Product Characteristics				
Color	white (off-white/tan)	Score		
Shape		Size		
Flavor		Imprint Code		
Contains				
Packaging				
#	Item Code	Package Description	Marketing Start Date	Marketing End Date
1	NDC:51316-985-08	1 in 1 CARTON	06/20/2025	
1		117 g in 1 TUBE; Type 0: Not a Combination Product		
Marketing Information				
Marketing Category	Application Number or Monograph Citation	Marketing Start Date	Marketing End Date	
ANDA	ANDA210720	06/20/2025		

Labeler - CVS Pharmacy (062312574)

Establishment

Name	Address	ID/FEI	Business Operations
Taro Pharmaceuticals Industries Ltd.		600072078	manufacture(51316-985)

Revised: 6/2025

CVS Pharmacy