

ANTHELICIDE EQ- oxibendazole paste
Zoetis Inc.

ANTHELICIDE[®] EQ
(oxibendazole)

Equine Wormer Paste

For use in horses only

DESCRIPTION: Anthelcide EQ Paste is a paste formulation of oxibendazole, a broad-spectrum benzimidazole anthelmintic. This formulation has been developed for ease of administration. Each syringe contains 0.85 oz (24 g) of paste.

Anthelcide EQ Paste contains:

Oxibendazole 22.7%

INDICATIONS: Anthelcide EQ Paste is indicated for removal and control of: large strongyles (*Strongylus edentatus*, *S. equinus*, *S. vulgaris*); small strongyles (species of the genera *Cylicostephanus*, *Cylicocyclus*, *Cyathostomum*, *Triodontophorus*, *Cylicodontophorus*, and *Gyalocephalus*); large roundworms (*Parascaris equorum*); pinworms (*Oxyuris equi*) including various larval stages; and threadworms (*Strongyloides westeri*).

CONTRAINDICATIONS: Anthelcide EQ is contraindicated in severely debilitated horses or horses suffering from infectious disease, toxemia, or colic.

Warning: Do not use in horses intended for human consumption.

PRECAUTIONS: Consult your veterinarian for assistance in the diagnosis, treatment, and control of parasitism.

Keep Out of Reach of Children.

DOSAGE AND ADMINISTRATION: The dosage of oxibendazole is 10 mg/kg (2.2 lb) of body weight (15 mg/kg for strongyloides). Each mark on the syringe delivers Anthelcide EQ to treat 100 lb (67 lb for strongyloides). Horses maintained on premises where reinfection is likely to occur should be retreated in 6–8 weeks.

Dosage Table

| 10 mg/kg | | 15 mg/kg | |
|--------------|-------------------|--------------|-------------------|
| Syringe Mark | Horse Weight (lb) | Syringe Mark | Horse Weight (lb) |
| 100 | 100 | 300 | 200 |
| 200 | 200 | 600 | 400 |
| 400 | 400 | 900 | 600 |
| 600 | 600 | 1200 | 800 |
| 800 | 800 | | |
| 1000 | 1000 | | |
| 1200 | 1200 | | |

Anthelcide EQ is compatible with carbon disulfide, which can be used concurrently for bot control (*Gasterophilus* spp.) when administered by a veterinarian. Routine carbon disulfide cautions must be observed.

USE OF SYRINGE: Determine the weight of the horse and dial the correct setting on the plunger,

having the side of the wheel nearest the barrel on the desired mark. Remove the cap from the syringe. Insert the tip of the syringe into the side of the animal's mouth between the incisor and molar teeth and press the plunger down as far as it will go, depositing the paste on the back of the tongue.

HOW SUPPLIED: Anthelcide EQ Paste is supplied in 12 0.85-oz (24-g) syringes.

STORAGE: Store at controlled room temperature 15°–30°C (59°–86°F).

NADA #121-042, Approved by FDA

Distributed by:

Zoetis Inc.

Kalamazoo, MI 49007

13897600

Revised: January 2013

PRINCIPAL DISPLAY PANEL - 24 g Syringe Carton

ANTHELCIDE[®]EQ
(oxibendazole)

Equine Wormer Paste

For use in horses only

Net Weight: 0.85 oz (24 g)

Active Ingredient:

Oxibendazole 22.7%

Keep Out of Reach of Children

NADA #121-042, Approved by FDA

zoetis

6 04500
13 897500

| Doseage Table | | | |
|-----------------------------------|----------|-----------------------------------|----------|
| Syringe Mark Horse Weight (lb) | 15 mg/kg | Syringe Mark Horse Weight (lb) | 10 mg/kg |
| 20.0 | 3.00 | 100 | 1.00 |
| 40.0 | 6.00 | 200 | 2.00 |
| 60.0 | 9.00 | 400 | 4.00 |
| 80.0 | 12.00 | 600 | 6.00 |
| | | 800 | 8.00 |
| | | 1000 | 10.00 |
| | | 1200 | 12.00 |

Precautions: Consult your veterinarian for assistance in the diagnosis, treatment, and control of parasitism.

Dosage and Administration: The dosage of oxibendazole is 10 mg/kg (2.2 lb) of body weight (15 mg/kg for strongyles). Each mark on the syringe delivers Anthelcide EQ to treat 1.00 lb (0.7 lb for strongyles).

Anthelcide EQ is compatible with carbon disulfide, which can be used concurrently for bot control (*Gasterophilus* spp.) when administered by a veterinarian. Routine carbon disulfide cautions must be observed.

Use of Syringe: Determine the weight of the horse and dial the correct setting on the plunger, having the side of the wheel nearest the barrel on the desired mark. Remove the cap, trim the syringe, insert the tip of the syringe into the side of the animal's mouth between the incisor and molar teeth and press the plunger down as far as it will go, depositing the paste on the back of the tongue.

Store at Controlled Room Temperature 15°-30° C (59°-86° F).

zoetis

ANTHELICIDE[®] EQ

(oxibendazole)

Equine Wormer Paste

Indications: Anthelcide EQ Paste is indicated for removal and control of: large strongyles (*Strongylus edentatus*, *S. equinus*, *S. vulgaris*); small strongyles (species of the genera *Cylicostephanus*, *Cylicocyclus*, *Cyathostomum*, *Triondantophorus*, *Cylicodontophorus*, and *Gyaloccephalus*); large roundworms (*Parascaris equorum*); pinworms (*Oxyuris equi*) including various larval stages; and threadworms (*Strongyloides westeri*).

◆ **Warning:** Do not use in horses intended for human consumption. ◆

ANTHELICIDE[®] EQ

(oxibendazole)

Equine Wormer Paste

For use in horses only

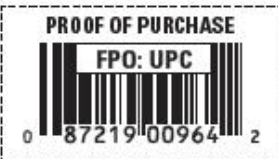
Net Weight: 0.85 oz (24 g)

Active Ingredient:
Oxibendazole..... 227%

Keep Out of Reach of Children
NADA #121-042, Approved by FDA



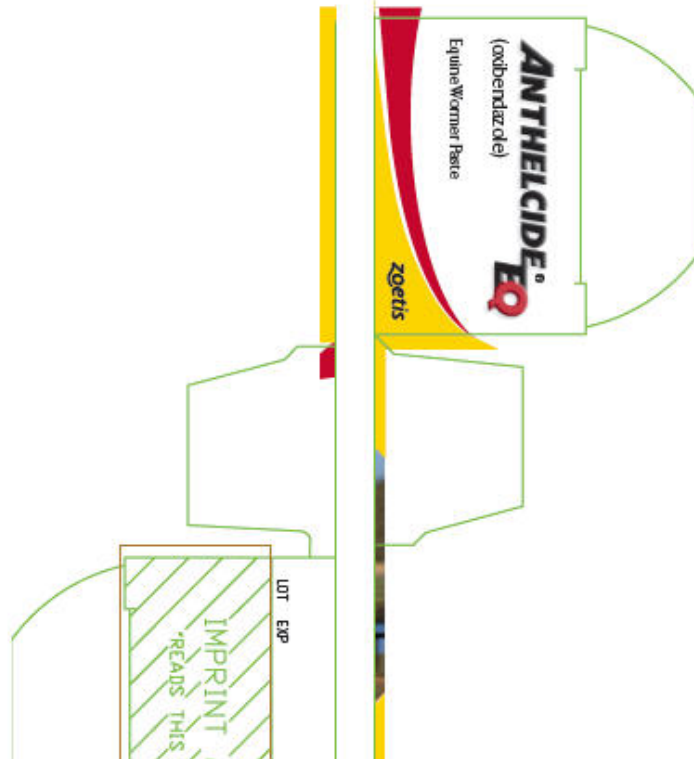
zoetis

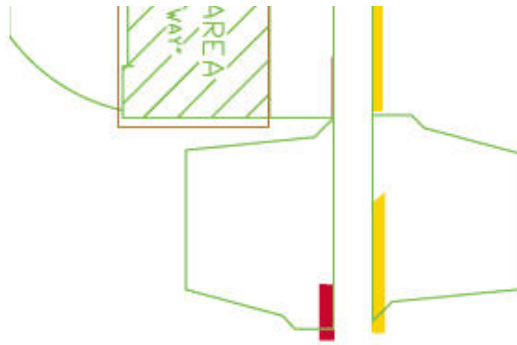


zoetis

Distributed by:
Zoetis Inc.
Kalamazoo, MI 49007

zoetis





ANTHELICIDE EQ

oxibendazole paste

Product Information

| | | | |
|--------------------------------|-----------------|---------------------------|----------------|
| Product Type | OTC ANIMAL DRUG | Item Code (Source) | NDC:54771-6045 |
| Route of Administration | ORAL | | |

Active Ingredient/Active Moiety

| Ingredient Name | Basis of Strength | Strength |
|--|-------------------|---------------|
| oxibendazole (UNII: 022N12KJ0X) (oxibendazole - UNII:022N12KJ0X) | oxibendazole | 227 mg in 1 g |

Packaging

| # | Item Code | Package Description | Marketing Start Date | Marketing End Date |
|---|------------------|---------------------|----------------------|--------------------|
| 1 | NDC:54771-6045-1 | 24 g in 1 SYRINGE | | |

Marketing Information

| Marketing Category | Application Number or Monograph Citation | Marketing Start Date | Marketing End Date |
|--------------------|--|----------------------|--------------------|
| NADA | NADA121042 | 10/16/1981 | |

Labeler - Zoetis Inc. (828851555)

Establishment

| Name | Address | ID/FEI | Business Operations |
|------------|---------|-----------|---------------------|
| Zoetis LLC | | 039055157 | MANUFACTURE |

Establishment

| Name | Address | ID/FEI | Business Operations |
|-----------------------------|---------|-----------|---------------------|
| UQUIFA Mexico, S.A. DE C.V. | | 810105874 | API MANUFACTURE |