

**BROMPHENIRAMINE MALEATE, PSEUDOEPHEDRINE HYDROCHLORIDE AND DEXTROMETHORPHAN HYDROBROMIDE- brompheniramine maleate, pseudoephedrine hydrochloride and dextromethorphan hydrobromide syrup
REMEDYREPACK INC.**

Brompheniramine Maleate, Pseudoephedrine Hydrochloride and Dextromethorphan Hydrobromide Oral Syrup

Rx only

DESCRIPTION

Brompheniramine Maleate, Pseudoephedrine Hydrochloride and Dextromethorphan Hydrobromide Oral Syrup is a clear, light pink syrup with a butterscotch flavor.

Each 5 mL (1 teaspoonful) contains:

Brompheniramine Maleate, USP 2 mg

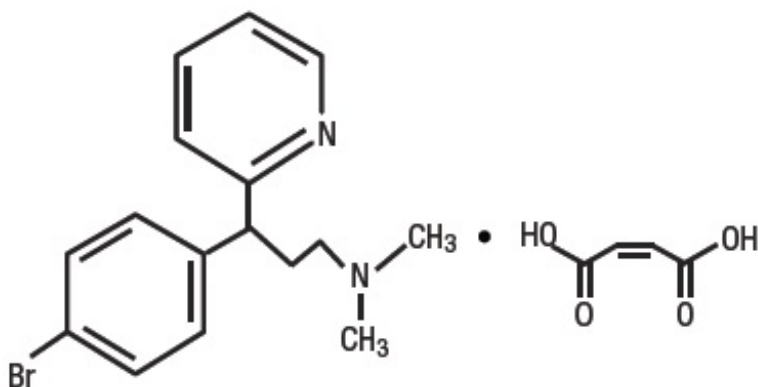
Pseudoephedrine Hydrochloride, USP 30 mg

Dextromethorphan Hydrobromide, USP 10 mg

Alcohol 0.95% v/v

In a palatable, aromatic vehicle.

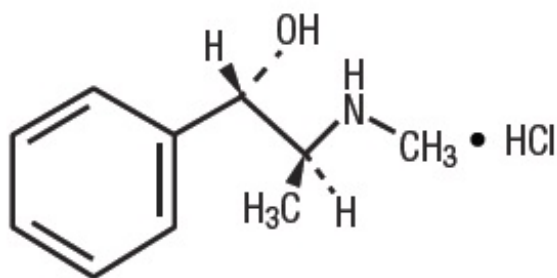
Inactive Ingredients: alcohol, artificial butterscotch flavor, citric acid anhydrous, glycerin, methylparaben, propylene glycol, purified water, sodium benzoate, sodium citrate, sucrose, and FD&C Red No. 40. It may contain 10% citric acid solution or 10% sodium citrate solution for pH adjustment. The pH range is between 3.0 and 6.0.



$C_{18}H_{19}BrN_2 \cdot C_4H_4O_4$

M.W. 435.31

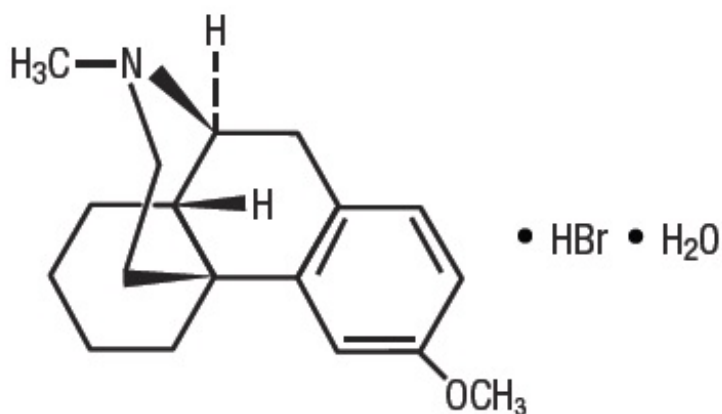
Brompheniramine Maleate, USP
(±)-2-p-Bromo-α-2-(dimethylamino)ethylbenzylpyridine maleate (1:1)



$C_{10}H_{15}NO \cdot HCl$

M.W. 201.69

Pseudoephedrine Hydrochloride, USP
(+)-Pseudoephedrine hydrochloride



$C_{18}H_{25}NO \cdot HBr \cdot H_2O$

M.W. 370.32

Dextromethorphan Hydrobromide, USP
3-Methoxy-17-methyl-9 α , 13 α , 14 α -morphinan hydrobromide monohydrate

Antihistamine/Nasal Decongestant/Antitussive syrup for oral administration.

CLINICAL PHARMACOLOGY

Brompheniramine maleate is a histamine antagonist, specifically an H₁-receptor-blocking agent belonging to the alkylamine class of antihistamines. Antihistamines appear to compete with histamine for receptor sites on effector cells. Brompheniramine also has anticholinergic (drying) and sedative effects. Among the antihistaminic effects, it antagonizes the allergic response (vasodilation, increased vascular permeability, increased mucus secretion) of nasal tissue. Brompheniramine is well absorbed from the gastrointestinal tract, with peak plasma concentration after single, oral dose of 4 mg reached in 5 hours; urinary excretion is the major route of elimination, mostly as products of biodegradation; the liver is assumed to be the main site of metabolic transformation.

Pseudoephedrine acts on sympathetic nerve endings and also on smooth muscle,

making it useful as a nasal decongestant. The nasal decongestant effect is mediated by the action of pseudoephedrine on α -sympathetic receptors, producing vasoconstriction of the dilated nasal arterioles. Following oral administration, effects are noted within 30 minutes with peak activity occurring at approximately one hour.

Dextromethorphan acts centrally to elevate the threshold for coughing. It has no analgesic or addictive properties. The onset of antitussive action occurs in 15 to 30 minutes after administration and is of long duration.

INDICATIONS AND USAGE

For relief of coughs and upper respiratory symptoms, including nasal congestion, associated with allergy or the common cold.

CONTRAINDICATIONS

Hypersensitivity to any of the ingredients. Do not use in the newborn, in premature infants, in nursing mothers, or in patients with severe hypertension or severe coronary artery disease. Do not use dextromethorphan in patients receiving monoamine oxidase (MAOI) inhibitors (see **PRECAUTIONS - Drug Interactions**).

Antihistamines should not be used to treat lower respiratory tract conditions including asthma.

WARNINGS

Especially in infants and small children, antihistamines in overdose may cause hallucinations, convulsions, and death.

Antihistamines may diminish mental alertness. In the young child, they may produce excitation.

PRECAUTIONS

General

Because of its antihistamine component, Brompheniramine Maleate, Pseudoephedrine Hydrochloride and Dextromethorphan Hydrobromide Oral Syrup should be used with caution in patients with a history of bronchial asthma, narrow angle glaucoma, gastrointestinal obstruction, or urinary bladder neck obstruction. Because of its sympathomimetic component, Brompheniramine Maleate, Pseudoephedrine Hydrochloride and Dextromethorphan Hydrobromide Oral Syrup should be used with caution in patients with diabetes, hypertension, heart disease, or thyroid disease.

Information for Patients

Patients should be warned about engaging in activities requiring mental alertness, such as driving a car or operating dangerous machinery.

Repackaged By / Distributed By: RemedyRepack Inc.

625 Kolter Drive, Indiana, PA 15701

(724) 465-8762

Drug Interactions

Monoamine oxidase (MAO) inhibitors

Hyperpyrexia, hypotension, and death have been reported coincident with the coadministration of MAO inhibitors and products containing dextromethorphan. In addition, MAO inhibitors prolong and intensify the anticholinergic (drying) effects of antihistamines and may enhance the effect of pseudoephedrine. Concomitant administration of Brompheniramine Maleate, Pseudoephedrine Hydrochloride and Dextromethorphan Hydrobromide Oral Syrup and MAO inhibitors should be avoided (see**CONTRAINDICATIONS**).

Central Nervous System (CNS) depressants

Antihistamines have additive effects with alcohol and other CNS depressants (hypnotics, sedatives, tranquilizers, antianxiety agents, etc.).

Antihypertensive drugs

Sympathomimetic may reduce the effects of antihypertensive drugs.

Carcinogenesis, Mutagenesis, Impairment of Fertility

Animal studies of Brompheniramine Maleate, Pseudoephedrine Hydrochloride and Dextromethorphan Hydrobromide Oral Syrup to assess the carcinogenic and mutagenic potential or the effect on fertility have not been performed.

Pregnancy

Teratogenic Effects

Pregnancy Category C

Animal reproduction studies have not been conducted with Brompheniramine Maleate, Pseudoephedrine Hydrochloride and Dextromethorphan Hydrobromide Oral Syrup. It is also not known whether Brompheniramine Maleate, Pseudoephedrine Hydrochloride and Dextromethorphan Hydrobromide Oral Syrup can cause fetal harm when administered to a pregnant woman or can affect reproduction capacity. It should be given to a pregnant woman only if clearly needed.

Reproduction studies of brompheniramine maleate (a component of Brompheniramine Maleate, Pseudoephedrine Hydrochloride and Dextromethorphan Hydrobromide Oral Syrup) in rats and mice at doses up to 16 times the maximum human doses have revealed no evidence of impaired fertility or harm to the fetus.

Nursing Mothers

Because of the higher risk of intolerance of antihistamines in small infants generally, and in newborns and prematures in particular, Brompheniramine Maleate, Pseudoephedrine Hydrochloride and Dextromethorphan Hydrobromide Oral Syrup is contraindicated in nursing mothers.

Pediatric Use

Safety and effectiveness in pediatric patients below the age of 6 months have not been established (see **DOSAGE AND ADMINISTRATION**).

Geriatric Use

Clinical studies of Brompheniramine Maleate, Pseudoephedrine Hydrochloride and Dextromethorphan Hydrobromide Oral Syrup did not include sufficient numbers of subjects aged 65 and over to determine whether they respond differently from younger subjects. However, antihistamines are more likely to cause dizziness, sedation, and hypotension in elderly patients. The elderly are also more likely to experience adverse reactions to sympathomimetics.

In general, dose selection for an elderly patient should be cautious, usually starting at the low end of the dosing range, reflecting the greater frequency of decreased hepatic, renal, or cardiac function, and of concomitant disease or other drug therapy.

ADVERSE REACTIONS

The most frequent adverse reactions to Brompheniramine Maleate, Pseudoephedrine Hydrochloride and Dextromethorphan Hydrobromide Oral Syrup are: sedation; dryness of mouth, nose and throat; thickening of bronchial secretions; dizziness.

Other adverse reactions may include:

Dermatologic:Urticaria, drug rash, photosensitivity, pruritus.

Cardiovascular System:Hypotension, hypertension, cardiac arrhythmias, palpitation.

CNS:Disturbed coordination, tremor, irritability, insomnia, visual disturbances, weakness, nervousness, convulsions, headache, euphoria, and dysphoria.

G.U. System:Urinary frequency, difficult urination.

G.I. System:Epigastric discomfort, anorexia, nausea, vomiting, diarrhea, constipation.

Respiratory System:Tightness of chest and wheezing, shortness of breath.

Hematologic System:Hemolytic anemia, thrombocytopenia, agranulocytosis.

OVERDOSAGE

Signs and Symptoms

Central nervous system effects from overdosage of brompheniramine may vary from depression to stimulation, especially in children. Anticholinergic effects may be noted. Toxic doses of pseudoephedrine may result in CNS stimulation, tachycardia, hypertension, and cardiac arrhythmias; signs of CNS depression may occasionally be seen. Dextromethorphan in toxic doses will cause drowsiness, ataxia, nystagmus, opisthotonos, and convulsive seizures.

Toxic Doses

Data suggest that individuals may respond in an unexpected manner to apparently small amounts of a particular drug. A 2½-year-old child survived the ingestion of 21 mg/kg of

dextromethorphan exhibiting only ataxia, drowsiness, and fever, but seizures have been reported in 2 children following the ingestion of 13-17 mg/kg. Another 2½-year-old child survived a dose of 300-900 mg of brompheniramine. The toxic dose of pseudoephedrine should be less than that of ephedrine, which is estimated to be 50 mg/kg.

Treatment

Induce emesis if patient is alert and is seen prior to 6 hours following ingestion. Precautions against aspiration must be taken, especially in infants and small children. Gastric lavage may be carried out, although in some instances tracheostomy may be necessary prior to lavage. Naloxone hydrochloride 0.005 mg/kg intravenously may be of value in reversing the CNS depression that may occur from an overdose of dextromethorphan. CNS stimulants may counter CNS depression. Should CNS hyperactivity or convulsive seizures occur, intravenous short-acting barbiturates may be indicated. Hypertensive responses and/or tachycardia should be treated appropriately. Oxygen, intravenous fluids, and other supportive measures should be employed as indicated.

DOSAGE AND ADMINISTRATION

Adults and pediatric patients 12 years of age and over: 10 mL (2 teaspoonfuls) every 4 hours. Children 6 to under 12 years of age: 5 mL (1 teaspoonful) every 4 hours. Children 2 to under 6 years of age: 2.5 mL (½ teaspoonful) every 4 hours. Infants 6 months to under 2 years of age: Dosage to be established by a physician.

Do not exceed 6 doses during a 24-hour period.

HOW SUPPLIED

Brompheniramine Maleate, Pseudoephedrine Hydrochloride and Dextromethorphan Hydrobromide Oral Syrup is a clear, light pink-colored, butterscotch-flavored syrup containing in each 5 mL (1 teaspoonful) brompheniramine maleate 2 mg, pseudoephedrine hydrochloride 30 mg and dextromethorphan hydrobromide 10 mg, available in the following sizes:

8mg/120mg/40mg / 20mL

NDC: 70518-4526-00

NDC: 70518-4526-01

NDC: 70518-4526-02

NDC: 70518-4526-03

PACKAGING: 3 in 1 BOX

PACKAGING: 20 mL in 1 CUP

PACKAGING: 6 in 1 BOX

PACKAGING: 10 mL in 1 CUP

Store at 20° to 25°C (68° to 77°F) [see USP Controlled Room Temperature].

Keep Tightly Closed

Dispense in a tight, light-resistant container as defined in the USP.

Rx Only

Repackaged and Distributed By:

Remedy Repack, Inc.

625 Kolter Dr. Suite #4 Indiana, PA 1-724-465-8762

RECOMMENDED STORAGE

Store at 20° to 25°C (68° to 77°F) [see USP Controlled Room Temperature].

Keep Tightly Closed

Dispense in a tight, light-resistant container as defined in the USP.

Rx Only

Repackaged and Distributed By:

Remedy Repack, Inc.

625 Kolter Dr. Suite #4 Indiana, PA 1-724-465-8762

DRUG: Brompheniramine Maleate, Pseudoephedrine Hydrochloride and
Dextromethorphan Hydrobromide

GENERIC: Brompheniramine Maleate, Pseudoephedrine Hydrochloride and
Dextromethorphan Hydrobromide

DOSAGE: SYRUP

ADMINISTRATION: ORAL

NDC: 70518-4526-0

NDC: 70518-4526-1

NDC: 70518-4526-2

NDC: 70518-4526-3

COLOR: pink

FLAVOR: BUTTERSCOTCH

OUTER PACKAGING: 3 in 1 BOX

PACKAGING: 20 mL in 1 CUP

OUTER PACKAGING: 6 in 1 BOX

PACKAGING: 10 mL in 1 CUP

ACTIVE INGREDIENT(S):

- PSEUDOEPHEDRINE HYDROCHLORIDE 30mg in 5mL
- DEXTROMETHORPHAN HYDROBROMIDE 10mg in 5mL
- BROMPHENIRAMINE MALEATE 2mg in 5mL

INACTIVE INGREDIENT(S):

- ALCOHOL
- ANHYDROUS CITRIC ACID
- GLYCERIN
- METHYLPARABEN
- PROPYLENE GLYCOL
- WATER
- SODIUM BENZOATE
- SUCROSE
- FD&C RED NO. 40
- SODIUM CITRATE, UNSPECIFIED FORM

Bromfed DM Syrup

NDC #: **70518-4526-00**

Expires:

Alcohol 0.95% v/v

LOT #:

Org NDC: 00574-1104-04

MFG: Padagis, Allegan, MI 49010

8mg/120mg/40mg / 20 mL

QTY: 3 (20mL) Cups

Keep this and all medication out
of the reach of children
Store at 20-25°C (68-77°F);
excursions permitted to 15-30°C
(59-86°F) [See USP]

Usual Dosage: See Insert



RX ONLY

Repackaged By:
RemedyRepack Inc.,
Indiana, PA 15701, 724.465.8762

LOT #:
EXP. DATE:
NDC #:
MFG. NAME:
MFG. ADDRESS:
MFG. CITY, STATE, ZIP:
MFG. PHONE:
MFG. FAX:
MFG. E-MAIL:
MFG. WEBSITE:

Bromfed DM Syrup

NDC #: **70518-4526-01**

Expires:

Alcohol 0.95% v/v

LOT #:

Org NDC: 00574-1104-04

MFG: Padagis, Allegan, MI 49010

8mg/120mg/40mg / 20 mL

QTY: 20 mL

Keep this and all medication out
of the reach of children
Store at 20-25°C (68-77°F);
excursions permitted to 15-30°C
(59-86°F) [See USP]

Usual Dosage: See Insert



RX ONLY

Repackaged By:
RemedyRepack Inc.,
Indiana, PA 15701, 724.465.8762

LOT #:
EXP. DATE:
NDC #:
MFG. NAME:
MFG. ADDRESS:
MFG. CITY, STATE, ZIP:
MFG. PHONE:
MFG. FAX:
MFG. E-MAIL:
MFG. WEBSITE:

Bromfed DM Syrup

NDC #: 70518-4526-02

Expires:

Alcohol 0.95% v/v

LOT #:

Org NDC: 00574-1104-04

MFG: Padagis, Allegan, MI 49010

4mg/60mg/20mg / 10 mL

QTY: 6 (10mL) Cups

Keep this and all medication out
of the reach of children

Store at 20-25°C (68-77°F);

excursions permitted to 15-30°C
(59-86°F) [See USP]

Usual Dosage: See Insert



RX ONLY

Repackaged By:

RemedyRepack Inc.,

Indiana, PA 15701, 724.465.8762

LOT #: 1001
EXP: 12/2020
NDC: 70518-4526-02
MFG: PADAGIS
MFG: ALLEGAN, MI 49010
MFG: 10/2019
MFG: 10/2019
MFG: 10/2019
MFG: 10/2019
MFG: 10/2019
MFG: 10/2019
MFG: 10/2019
MFG: 10/2019
MFG: 10/2019

Bromfed DM Syrup

NDC #: 70518-4526-03

Expires:

Alcohol 0.95% v/v

LOT #:

Org NDC: 00574-1104-04

MFG: Padagis, Allegan, MI 49010

4mg/60mg/20mg / 10 mL

QTY: 10 mL

Keep this and all medication out
of the reach of children

Store at 20-25°C (68-77°F);

excursions permitted to 15-30°C
(59-86°F) [See USP]

Usual Dosage: See Insert



RX ONLY

Repackaged By:

RemedyRepack Inc.,

Indiana, PA 15701, 724.465.8762

LOT #: 1001
EXP: 12/2020
NDC: 70518-4526-03
MFG: PADAGIS
MFG: ALLEGAN, MI 49010
MFG: 10/2019
MFG: 10/2019
MFG: 10/2019
MFG: 10/2019
MFG: 10/2019
MFG: 10/2019
MFG: 10/2019
MFG: 10/2019
MFG: 10/2019

BROMPHENIRAMINE MALEATE, PSEUDOEPHEDRINE HYDROCHLORIDE AND DEXTROMETHORPHAN HYDROBROMIDE

brompheniramine maleate, pseudoephedrine hydrochloride and dextromethorphan hydrobromide
syrup

Product Information

Product Type

HUMAN PRESCRIPTION
DRUG

Item Code (Source)

NDC:70518-4526(NDC:0574-
1104)

Route of Administration

ORAL

Active Ingredient/Active Moiety

Ingredient Name	Basis of Strength	Strength
BROMPHENIRAMINE MALEATE (UNII: IXA7C9ZN03) (BROMPHENIRAMINE - UNII:H57G17P2FN)	BROMPHENIRAMINE MALEATE	2 mg in 5 mL
PSEUDOEPHEDRINE HYDROCHLORIDE (UNII: 6V9V2RYJ8N)	PSEUDOEPHEDRINE	30 mg

(PSEUDOEPHEDRINE - UNII:7CUC9DDI9F)	HYDROCHLORIDE	in 5 mL
DEXTROMETHORPHAN HYDROBROMIDE (UNII: 9D2RTI9KYH) (DEXTROMETHORPHAN - UNII:7355X3ROTS)	DEXTROMETHORPHAN HYDROBROMIDE	10 mg in 5 mL

Inactive Ingredients

Ingredient Name	Strength
ALCOHOL (UNII: 3K9958V90M)	
ANHYDROUS CITRIC ACID (UNII: XF417D3PSL)	
GLYCERIN (UNII: PDC6A3C0OX)	
METHYLPARABEN (UNII: A2I8C7HI9T)	
PROPYLENE GLYCOL (UNII: 6DC9Q167V3)	
WATER (UNII: 059QF0KO0R)	
SODIUM BENZOATE (UNII: OJ245FE5EU)	
SUCROSE (UNII: C151H8M554)	
FD&C RED NO. 40 (UNII: WZB9127XOA)	
SODIUM CITRATE, UNSPECIFIED FORM (UNII: 1Q73Q2JULR)	

Product Characteristics

Color	pink (clear, light pink)	Score	
Shape		Size	
Flavor	BUTTERSCOTCH	Imprint Code	
Contains			

Packaging

#	Item Code	Package Description	Marketing Start Date	Marketing End Date
1	NDC:70518-4526-0	3 in 1 BOX	12/01/2025	
1	NDC:70518-4526-1	20 mL in 1 CUP; Type 0: Not a Combination Product		
2	NDC:70518-4526-2	6 in 1 BOX	12/10/2025	
2	NDC:70518-4526-3	10 mL in 1 CUP; Type 0: Not a Combination Product		

Marketing Information

Marketing Category	Application Number or Monograph Citation	Marketing Start Date	Marketing End Date
ANDA	ANDA205292	12/01/2025	

Labeler - REMEDYREPACK INC. (829572556)