

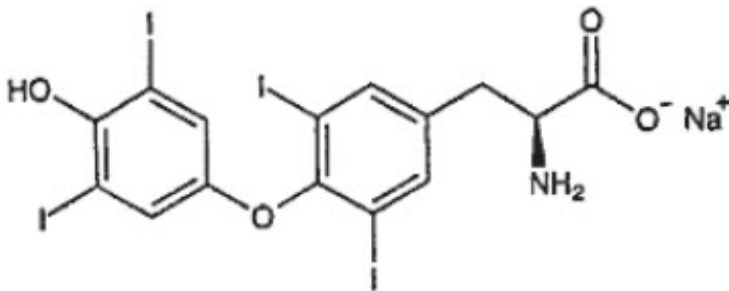
**THYRO-TABS CANINE- levothyroxine sodium tablet**  
**LLOYD, Inc. of Iowa**

-----  
**Thyro-Tabs® Canine**  
**(levothyroxine sodium tablets), USP**

Synthetic thyroxine hormone  
For oral use in dogs only.

**CAUTION:** Federal (USA) law restricts this drug to use by or on the order of a licensed veterinarian.

**DESCRIPTION:** Thyro-Tabs® Canine (levothyroxine sodium tablets), USP contains synthetic crystalline L-3,3',5,5'-tetraiodothyronine sodium salt [levothyroxine (T4) sodium]. Synthetic T4 is identical to that produced in the canine thyroid gland. Levothyroxine sodium has an empirical formula of  $C_{15}H_{10}I_4N NaO_4 \cdot H_2O$ , molecular weight of 798.85 g/mol (anhydrous), and structural formula as shown:



**INDICATION:** For replacement therapy for diminished thyroid function in dogs.

**DOSAGE AND ADMINISTRATION:**

The initial total daily dose is 0.1 mg/10 pounds (0.01 mg/lb; 0.022 mg/kg) body weight as a single dose every 24 hours or as a divided dose every 12 hours.

The dose may then be adjusted by monitoring the serum total thyroxine (TT4) concentrations 4 to 6 hours post-tablet administration, along with clinical response, of the dog every 4 to 8 weeks until an adequate maintenance dose is established.

To minimize day-to-day variations in serum TT4 concentrations (**see CLINICAL PHARMACOLOGY**), owners should consistently administer Thyro-Tabs Canine either with or without food.

When switching from another levothyroxine sodium formulation to Thyro-Tabs Canine, monitor serum TT4 concentrations and clinical response due to potential differences in recommended starting doses and potential differences in bioavailability.

**CONTRAINDICATIONS:** Do not use in dogs with thyrotoxicosis or uncorrected adrenal insufficiency.

**WARNINGS:**

**USER SAFETY WARNINGS:** Not for use in humans. Keep out of reach of children. In

the event of accidental ingestion, seek medical advice immediately and show the product label to the physician. Wash hands after handling.

**ANIMAL SAFETY WARNINGS:** Keep Thyro-Tabs Canine in a secure location out of reach of dogs, cats, and other animals to prevent accidental ingestion or overdose.

In humans and rodents, excess *in utero* exposure to thyroid hormones is associated with hypothalamic-pituitary-thyroid axis dysfunction and morphological thyroid gland defects in the offspring. The safety of Thyro-Tabs Canine has not been evaluated in breeding, pregnant, or lactating dogs.

**PRECAUTIONS:** Dogs with underlying cardiac disease that are diagnosed with hypothyroidism should be closely monitored during the dose establishment phase. Adjustment of cardiac medication or levothyroxine sodium dosage may be needed depending on clinical response.<sup>1-4</sup>

### **ADVERSE REACTIONS:**

**PRE-APPROVAL EXPERIENCE:** In a 6-month US field study with 92 dogs, the most commonly reported adverse reactions by percentage of dogs experiencing the reaction included: anorexia (17%), dermatitis (15%), vomiting (15%), otitis externa (14%), lethargy (14%), polydipsia (13%), diarrhea (11%), leukocytosis (9%), pruritus (8%), tachypnea (8%), polyuria (5%), hyperactivity (4%), and seborrhea (1%).

One dog was withdrawn from the study at the owner's request because of increased water consumption and urination, which was possibly related to levothyroxine sodium.

Hematocrit and red blood cell counts exceeded the upper limit of the reference range in seven dogs by the end of the study. Liver enzyme (ALP, ALT, or AST) elevations related to levothyroxine administration were reported in three dogs. In two of the dogs with elevated ALT and AST, the elevations resolved by Day 70 and Day 126, respectively.

### **POST-APPROVAL EXPERIENCE (2022):**

The following adverse events are based on post-approval adverse drug experience reporting for Thyro-Tabs Canine. Not all adverse events are reported to FDA/CVM. It is not always possible to reliably estimate the adverse event frequency or establish a causal relationship to product exposure using these data.

The following adverse events reported in dogs, are listed in decreasing order of reporting frequency:

Pruritus, high or low serum thyroxine (T4) concentrations, tachypnea, weight loss, lethargy, anorexia, vomiting, polydipsia, alopecia, dermatitis, hyperactivity, diarrhea, and polyuria.

Allergic-type hypersensitivity reactions (including pruritus, hives, facial swelling, and dermatitis) have also been reported.

**CONTACT INFORMATION:** To report suspected adverse drug experiences, contact LLOYD, Inc. at 1-800-831-0004 or [www.lloydinc.com](http://www.lloydinc.com). For additional information about adverse drug experience reporting for animal drugs, contact FDA at 1-888 FDA-VETS or [www.fda.gov/reportanimalae](http://www.fda.gov/reportanimalae).

**CLINICAL PHARMACOLOGY:** Levothyroxine sodium has poor oral bioavailability in dogs (10-20%) with peak serum TT4 concentrations within 4 to 6 hours (fasted state). Administration of levothyroxine sodium with food reduces oral bioavailability.<sup>5</sup> In most

dogs, the estimated half-life is approximately 10-14 hours. Levothyroxine sodium is excreted in the feces.

**EFFECTIVENESS:** In a US field study with 92 dogs, dogs were administered a starting daily dose of 0.1 mg/10 lb (0.022 mg/kg) body weight. The dose was administered either once every 24 hours or as 0.05 mg/10 lb (0.011 mg/kg) body weight every 12 hours. The dose could be increased or decreased (without a change in frequency) after 6, 10, and 18 weeks, based on clinical findings and serum thyroid hormone concentrations. The majority of the dogs (80%) were dosed at 0.08-0.12 mg/10 lb (0.008-0.012 mg/lb; 0.018-0.026 mg/kg) by the end of the study, with the majority of dogs (69.7%) requiring one dose change.

The product was considered effective if the serum TT4, free thyroxine (fT4), and thyroid stimulating hormone (TSH) concentrations were all within the desired treatment ranges when collected 4 to 6 hours post-tablet administration after  $182 \pm 5$  days of treatment (TT4: 15-94 nmol/L; fT4: 8-36 pmol/L; TSH:  $\leq 37$  mU/L). Of the 78 evaluable cases, 59 (75.6%) were considered treatment successes. There was no statistical difference in the success rate between the once daily or divided dose treatment groups.

Clinical signs of hypothyroidism (weight gain, lethargy, bradycardia, seborrhea, alopecia, hyperpigmentation, scaling, and hypercholesterolemia) generally improved by the end of the study (Day  $182 \pm 5$ ). Respiratory rate, excluding panting dogs, increased during the study along with activity level.

**TARGET ANIMAL SAFETY:** In a laboratory study, levothyroxine sodium was administered to 32 healthy, 7-10 month old, euthyroid Beagle dogs (4 males and 4 females per group) at 0x, 2x, 6x, and 10x the initial dose of 0.10 mg/10 lb (0.01 mg/lb) once daily for 26 weeks. Increased serum TT4 and fT4 concentrations were directly proportional to an increasing dose of levothyroxine sodium. Decreased serum TSH concentrations were inversely proportional to an increasing dose of levothyroxine sodium. Dogs treated with levothyroxine sodium had elevated red blood cell indices (hemoglobin, hematocrit, and red blood cell count) and ALT but these did not exceed the normal reference ranges. Dogs treated with levothyroxine sodium had lower albumin, calcium, globulins, and total protein values but these did not fall below the normal reference ranges. Vomiting, diarrhea, excitation, rapid respiration, tachycardia, and feces with blood were observed in all treatment groups, but were seen with greater frequency in dogs treated with levothyroxine sodium. Decreased pituitary gland and thyroid/parathyroid gland organ weights were also observed in euthyroid dogs treated with levothyroxine sodium.

**STORAGE CONDITIONS:** Store at controlled room temperature 20°-25°C (68°-77°F) with excursions allowed between 15° and 30°C (59° and 86°F). Protect from light and moisture.

**HOW SUPPLIED:** Thyro-Tabs Canine (levothyroxine sodium tablets), USP is available as scored, color-coded ovoid tablets in 9 strengths: 0.1 mg–yellow; 0.2 mg–pink; 0.3 mg–green; 0.4 mg–maroon; 0.5 mg–white; 0.6 mg–purple; 0.7 mg–orange; 0.8 mg–blue; and 1.0 mg–tan, in bottles of 120 and 1,000 tablets.

Approved by FDA under NADA # 141-448

Manufactured by: LLOYD, Inc.  
Shenandoah, IA 51601

Rev. 0523

**REFERENCES:**

1. Phillips DE, Harkin KR. Hypothyroidism and myocardial failure in two Great Danes. *J Am Anim Hosp Assoc* 2003;39:133-137.
2. Flood JA, Hoover JP. Improvement in myocardial dysfunction in a hypothyroid dog. *Can Vet J* 2009;50:828-834.
3. Chow B, French A. Conversion of atrial fibrillation after levothyroxine in a dog with hypothyroidism and arterial thromboembolism. *J Small Anim Pract* 2014;55:278-282.
4. Sangster JK, Panciera DL, Abbott JA. Cardiovascular effects of thyroid disease. *Compend Contin Educ Vet* 2013;35:E5.
5. Le Traon G, Burgaud S, Horspool LJ. Pharmacokinetics of total thyroxine in dogs after administration of an oral solution of levothyroxine sodium. *J Vet Pharmacol Ther* 2008;31:95-101.

**LLOYD**

P.O. Box 130  
Shenandoah, IA 51601 U.S.A.  
712-246-4000

**PRINCIPAL DISPLAY PANEL - 0.1 mg Tablet Bottle Label**

NDC 11789-251-20

Thyro-Tabs® Canine  
(levothyroxine sodium tablets), USP

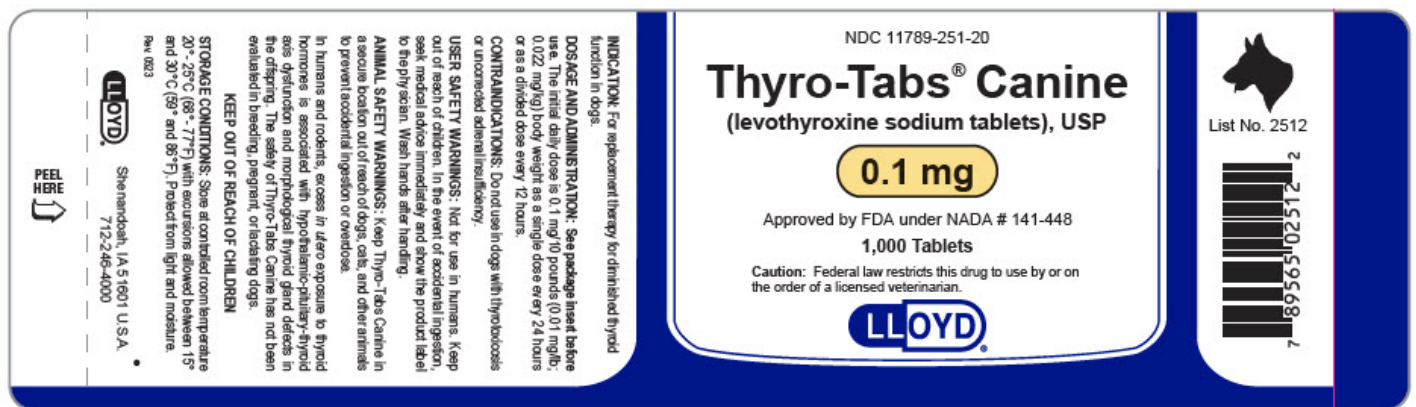
0.1 mg

Approved by FDA under NADA # 141-448

1,000 Tablets

Caution: Federal law restricts this drug to use by or on the order of a licensed veterinarian.

LLOYD®



**PRINCIPAL DISPLAY PANEL - 0.2 mg Tablet Bottle Label**

NDC 11789-252-20

Thyro-Tabs<sup>®</sup> Canine  
(levothyroxine sodium tablets), USP

0.2 mg

Approved by FDA under NADA # 141-448

1,000 Tablets

Caution: Federal law restricts this drug to use by or on  
the order of a licensed veterinarian.

LLOYD<sup>®</sup>

NDC 11789-252-20

**Thyro-Tabs<sup>®</sup> Canine**  
(levothyroxine sodium tablets), USP

**0.2 mg**

Approved by FDA under NADA # 141-448  
1,000 Tablets

Caution: Federal law restricts this drug to use by or on  
the order of a licensed veterinarian.

**LLOYD**

INDICATION: For replacement therapy for diminished thyroid function in dogs.

**DOSE AND ADMINISTRATION:** See package insert before use. The initial daily dose is 0.1 mg/10 pounds (0.01 mg/lb; 0.022 mg/kg) body weight as a single dose every 24 hours or as a divided dose every 12 hours.

**CONTRAINDICATIONS:** Do not use in dogs with thyrotoxicosis or uncorrected adrenal insufficiency.

**USER SAFETY WARNINGS:** Not for use in humans. Keep out of reach of children. In the event of accidental ingestion, seek medical advice immediately and show the product label to the physician. Wash hands after handling.

**ANIMAL SAFETY WARNINGS:** Keep Thyro-Tabs Canine in a secure location out of reach of dogs, cats, and other animals to prevent accidental ingestion or overdose.

In humans and rodents, excess in utero exposure to thyroid hormones is associated with hypothyroidism, pituitary-thyroid axis dysfunction and morphological thyroid gland defects in the offspring. The safety of Thyro-Tabs Canine has not been evaluated in breeding, pregnant, or lactating dogs.

**KEEP OUT OF REACH OF CHILDREN**

**STORAGE CONDITIONS:** Store at controlled room temperature 20°-25°C (68°-77°F) with excursions allowed between 15° and 30°C (59° and 86°F). Protect from light and moisture.

Rev. 05/23

**LLOYD** Shennepack, IA 51601 U.S.A.  
712-246-4000

PEEL HERE

List No. 2522

1 12252 05666 7

## PRINCIPAL DISPLAY PANEL - 0.3 mg Tablet Bottle Label

NDC 11789-253-20

Thyro-Tabs<sup>®</sup> Canine  
(levothyroxine sodium tablets), USP

0.3 mg

Approved by FDA under NADA # 141-448

1,000 Tablets

Caution: Federal law restricts this drug to use by or on  
the order of a licensed veterinarian.

LLOYD<sup>®</sup>



## PRINCIPAL DISPLAY PANEL - 0.4 mg Tablet Bottle Label

NDC 11789-254-20

Thyro-Tabs® Canine  
(levothyroxine sodium tablets), USP

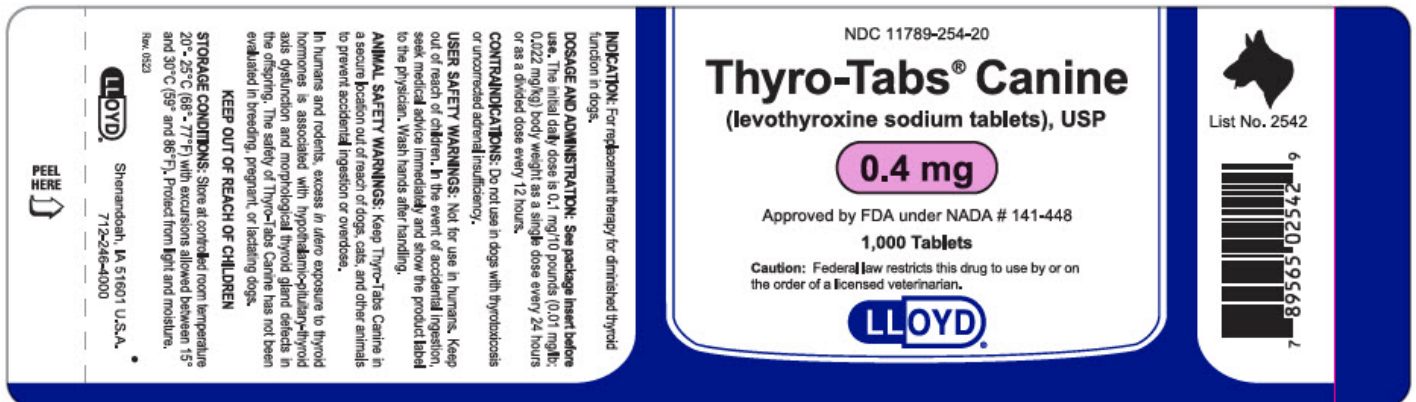
0.4 mg

Approved by FDA under NADA # 141-448

1,000 Tablets

Caution: Federal law restricts this drug to use by or on  
the order of a licensed veterinarian.

LLOYD®



## PRINCIPAL DISPLAY PANEL - 0.5 mg Tablet Bottle Label

NDC 11789-255-20

Thyro-Tabs® Canine  
(levothyroxine sodium tablets), USP

0.5 mg

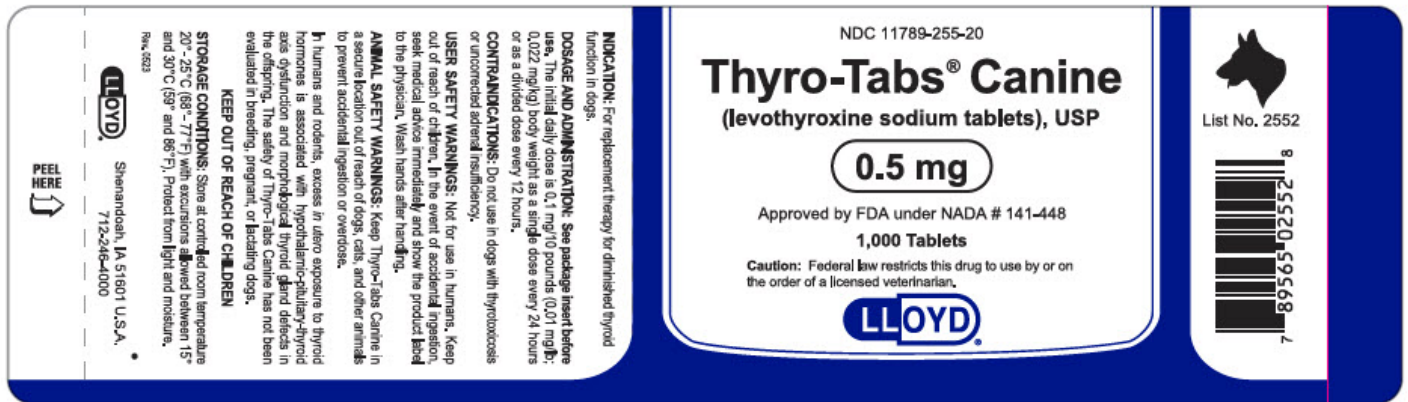
Approved by FDA under NADA # 141-448

1,000 Tablets



Caution: Federal law restricts this drug to use by or on the order of a licensed veterinarian.

LLOYD®



## PRINCIPAL DISPLAY PANEL - 0.6 mg Tablet Bottle Label

NDC 11789-256-20

Thyro-Tabs® Canine  
(levothyroxine sodium tablets), USP

0.6 mg

Approved by FDA under NADA # 141-448

1,000 Tablets

Caution: Federal law restricts this drug to use by or on the order of a licensed veterinarian.

LLOYD®



## PRINCIPAL DISPLAY PANEL - 0.7 mg Tablet Bottle Label

NDC 11789-257-20

Thyro-Tabs® Canine

(levothyroxine sodium tablets), USP

0.7 mg

Approved by FDA under NADA # 141-448

1,000 Tablets

Caution: Federal law restricts this drug to use by or on the order of a licensed veterinarian.

LLOYD®

## PRINCIPAL DISPLAY PANEL - 0.8 mg Tablet Bottle Label

NDC 11789-258-20

Thyro-Tabs® Canine  
(levothyroxine sodium tablets), USP

0.8 mg

Approved by FDA under NADA # 141-448

1,000 Tablets

Caution: Federal law restricts this drug to use by or on the order of a licensed veterinarian.

LLOYD®



## PRINCIPAL DISPLAY PANEL - 1.0 mg Tablet Bottle Label

NDC 11789-268-20

Thyro-Tabs<sup>®</sup> Canine  
(levothyroxine sodium tablets), USP

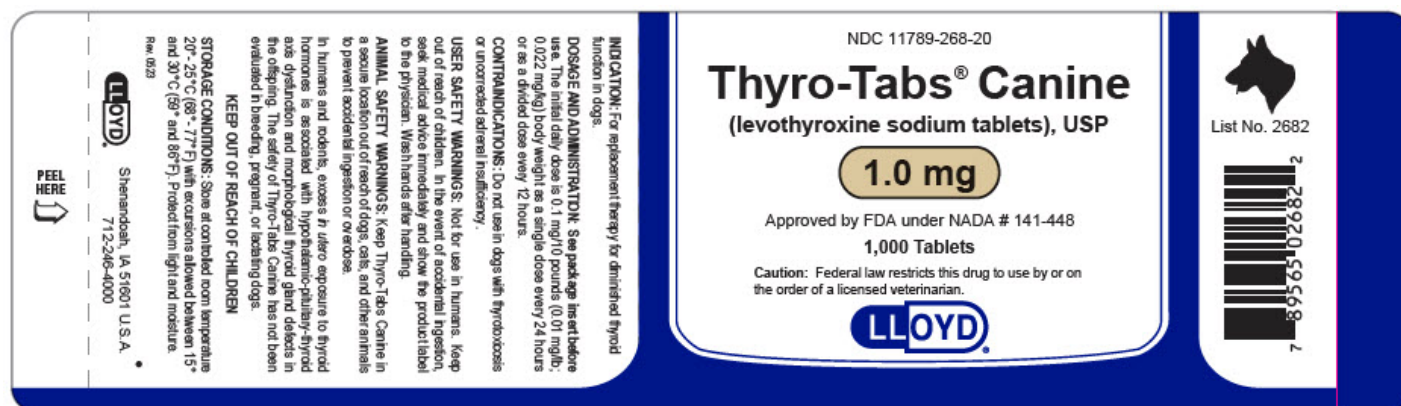
1.0 mg

Approved by FDA under NADA # 141-448

1,000 Tablets

Caution: Federal law restricts this drug to use by or on the order of a licensed veterinarian.

LLOYD<sup>®</sup>



## THYRO-TABS CANINE

levothyroxine sodium tablet

### Product Information

<b>Product Type</b>	PRESCRIPTION ANIMAL DRUG	<b>Item Code (Source)</b>	NDC:11789-251
<b>Route of Administration</b>	ORAL		

### Active Ingredient/Active Moiety

Ingredient Name	Basis of Strength	Strength
LEVOTHYROXINE SODIUM (UNII: 9J765S329G) (LEVOTHYROXINE - UNII:Q51BO43MG4)	LEVOTHYROXINE SODIUM ANHYDROUS	0.1 mg

### Product Characteristics

<b>Color</b>	YELLOW	<b>Score</b>	2 pieces
<b>Shape</b>	OVAL	<b>Size</b>	10mm
<b>Flavor</b>		<b>Imprint Code</b>	0;1;T4

**Contains****Packaging**

#	Item Code	Package Description	Marketing Start Date	Marketing End Date
1	NDC:11789-251-10	120 in 1 BOTTLE, PLASTIC		
2	NDC:11789-251-20	1000 in 1 BOTTLE, PLASTIC		

**Marketing Information**

Marketing Category	Application Number or Monograph Citation	Marketing Start Date	Marketing End Date
NADA	NADA141448	12/01/1990	

**THYRO-TABS CANINE**

levothyroxine sodium tablet

**Product Information**

<b>Product Type</b>	PRESCRIPTION ANIMAL DRUG	<b>Item Code (Source)</b>	NDC:11789-252
<b>Route of Administration</b>	ORAL		

**Active Ingredient/Active Moiety**

Ingredient Name	Basis of Strength	Strength
LEVOTHYROXINE SODIUM (UNII: 9J765S329G) (LEVOTHYROXINE - UNII:Q51BO43MG4)	LEVOTHYROXINE SODIUM ANHYDROUS	0.2 mg

**Product Characteristics**

<b>Color</b>	PINK (Light pink)	<b>Score</b>	2 pieces
<b>Shape</b>	OVAL	<b>Size</b>	10mm
<b>Flavor</b>		<b>Imprint Code</b>	0;2;T4
<b>Contains</b>			

**Packaging**

#	Item Code	Package Description	Marketing Start Date	Marketing End Date
1	NDC:11789-252-10	120 in 1 BOTTLE, PLASTIC		
2	NDC:11789-252-20	1000 in 1 BOTTLE, PLASTIC		

**Marketing Information**

Marketing Category	Application Number or Monograph Citation	Marketing Start Date	Marketing End Date
NADA	NADA141448	12/01/1990	

## THYRO-TABS CANINE

levothyroxine sodium tablet

### Product Information

<b>Product Type</b>	PRESCRIPTION ANIMAL DRUG	<b>Item Code (Source)</b>	NDC:11789-253
<b>Route of Administration</b>	ORAL		

### Active Ingredient/Active Moiety

Ingredient Name	Basis of Strength	Strength
LEVOTHYROXINE SODIUM (UNII: 9J765S329G) (LEVOTHYROXINE - UNII:Q51BO43MG4)	LEVOTHYROXINE SODIUM ANHYDROUS	0.3 mg

### Product Characteristics

<b>Color</b>	GREEN	<b>Score</b>	2 pieces
<b>Shape</b>	OVAL	<b>Size</b>	10mm
<b>Flavor</b>		<b>Imprint Code</b>	0;3;T4
<b>Contains</b>			

### Packaging

#	Item Code	Package Description	Marketing Start Date	Marketing End Date
1	NDC:11789-253-10	120 in 1 BOTTLE, PLASTIC		
2	NDC:11789-253-20	1000 in 1 BOTTLE, PLASTIC		

### Marketing Information

Marketing Category	Application Number or Monograph Citation	Marketing Start Date	Marketing End Date
NADA	NADA141448	12/01/1990	

## THYRO-TABS CANINE

levothyroxine sodium tablet

### Product Information

<b>Product Type</b>	PRESCRIPTION ANIMAL DRUG	<b>Item Code (Source)</b>	NDC:11789-254
<b>Route of Administration</b>	ORAL		

### Active Ingredient/Active Moiety

Ingredient Name	Basis of Strength	Strength
LEVOTHYROXINE SODIUM (UNII: 9J765S329G) (LEVOTHYROXINE -	LEVOTHYROXINE SODIUM	0.3 mg

UNII:Q51BO43MG4)

ANHYDROUS

0.4 mg

**Product Characteristics**

<b>Color</b>	PINK (Bright pink)	<b>Score</b>	2 pieces
<b>Shape</b>	OVAL	<b>Size</b>	10mm
<b>Flavor</b>		<b>Imprint Code</b>	0;4;T4
<b>Contains</b>			

**Packaging**

#	Item Code	Package Description	Marketing Start Date	Marketing End Date
1	NDC:11789-254-10	120 in 1 BOTTLE, PLASTIC		
2	NDC:11789-254-20	1000 in 1 BOTTLE, PLASTIC		

**Marketing Information**

Marketing Category	Application Number or Monograph Citation	Marketing Start Date	Marketing End Date
NADA	NADA141448	12/01/1990	

**THYRO-TABS CANINE**

levothyroxine sodium tablet

**Product Information**

<b>Product Type</b>	PRESCRIPTION ANIMAL DRUG	<b>Item Code (Source)</b>	NDC:11789-255
<b>Route of Administration</b>	ORAL		

**Active Ingredient/Active Moiety**

Ingredient Name	Basis of Strength	Strength
<b>LEVOTHYROXINE SODIUM</b> (UNII: 9J765S329G) (LEVOTHYROXINE - UNII:Q51BO43MG4)	LEVOTHYROXINE SODIUM ANHYDROUS	0.5 mg

**Product Characteristics**

<b>Color</b>	WHITE	<b>Score</b>	2 pieces
<b>Shape</b>	OVAL	<b>Size</b>	10mm
<b>Flavor</b>		<b>Imprint Code</b>	0;5;T4
<b>Contains</b>			

**Packaging**

#	Item Code	Package Description	Marketing Start Date	Marketing End Date
1	NDC:11789-255-10	120 in 1 BOTTLE, PLASTIC		
2	NDC:11789-255-20	1000 in 1 BOTTLE, PLASTIC		

## Marketing Information

Marketing Category	Application Number or Monograph Citation	Marketing Start Date	Marketing End Date
NADA	NADA141448	12/01/1990	

## THYRO-TABS CANINE

levothyroxine sodium tablet

### Product Information

Product Type	PRESCRIPTION ANIMAL DRUG	Item Code (Source)	NDC:11789-256
Route of Administration	ORAL		

### Active Ingredient/Active Moiety

Ingredient Name	Basis of Strength	Strength
LEVOTHYROXINE SODIUM (UNII: 9J765S329G) (LEVOTHYROXINE - UNII:Q51BO43MG4)	LEVOTHYROXINE SODIUM ANHYDROUS	0.6 mg

### Product Characteristics

Color	PURPLE (Lavender)	Score	2 pieces
Shape	OVAL	Size	10mm
Flavor		Imprint Code	0;6;T4
Contains			

### Packaging

#	Item Code	Package Description	Marketing Start Date	Marketing End Date
1	NDC:11789-256-10	120 in 1 BOTTLE, PLASTIC		
2	NDC:11789-256-20	1000 in 1 BOTTLE, PLASTIC		

## Marketing Information

Marketing Category	Application Number or Monograph Citation	Marketing Start Date	Marketing End Date
NADA	NADA141448	12/01/1990	

## THYRO-TABS CANINE

levothyroxine sodium tablet

### Product Information



<b>Product Type</b>	PRESCRIPTION ANIMAL DRUG	<b>Item Code (Source)</b>	NDC:11789-257
<b>Route of Administration</b>	ORAL		

### Active Ingredient/Active Moiety

Ingredient Name	Basis of Strength	Strength
<b>LEVOTHYROXINE SODIUM</b> (UNII: 9J765S329G) (LEVOTHYROXINE - UNII:Q51BO43MG4)	LEVOTHYROXINE SODIUM ANHYDROUS	0.7 mg

### Product Characteristics

<b>Color</b>	ORANGE (Light orange)	<b>Score</b>	2 pieces
<b>Shape</b>	OVAL	<b>Size</b>	10mm
<b>Flavor</b>		<b>Imprint Code</b>	0;7;T4
<b>Contains</b>			

### Packaging

#	Item Code	Package Description	Marketing Start Date	Marketing End Date
1	NDC:11789-257-10	120 in 1 BOTTLE, PLASTIC		
2	NDC:11789-257-20	1000 in 1 BOTTLE, PLASTIC		

### Marketing Information

Marketing Category	Application Number or Monograph Citation	Marketing Start Date	Marketing End Date
NADA	NADA141448	12/01/1990	

## THYRO-TABS CANINE

levothyroxine sodium tablet

### Product Information

<b>Product Type</b>	PRESCRIPTION ANIMAL DRUG	<b>Item Code (Source)</b>	NDC:11789-258
<b>Route of Administration</b>	ORAL		

### Active Ingredient/Active Moiety

Ingredient Name	Basis of Strength	Strength
<b>LEVOTHYROXINE SODIUM</b> (UNII: 9J765S329G) (LEVOTHYROXINE - UNII:Q51BO43MG4)	LEVOTHYROXINE SODIUM ANHYDROUS	0.8 mg

### Product Characteristics

<b>Color</b>	BLUE (Light blue)	<b>Score</b>	2 pieces
<b>Shape</b>	OVAL	<b>Size</b>	10mm
<b>Flavor</b>		<b>Imprint Code</b>	0;8;T4

**Contains****Packaging**

#	Item Code	Package Description	Marketing Start Date	Marketing End Date
1	NDC:11789-258-10	120 in 1 BOTTLE, PLASTIC		
2	NDC:11789-258-20	1000 in 1 BOTTLE, PLASTIC		

**Marketing Information**

Marketing Category	Application Number or Monograph Citation	Marketing Start Date	Marketing End Date
NADA	NADA141448	12/01/1990	

**THYRO-TABS CANINE**

levothyroxine sodium tablet

**Product Information**

<b>Product Type</b>	PRESCRIPTION ANIMAL DRUG	<b>Item Code (Source)</b>	NDC:11789-268
<b>Route of Administration</b>	ORAL		

**Active Ingredient/Active Moiety**

Ingredient Name	Basis of Strength	Strength
<b>LEVOTHYROXINE SODIUM</b> (UNII: 9J765S329G) (LEVOTHYROXINE - UNII:Q51BO43MG4)	LEVOTHYROXINE SODIUM ANHYDROUS	1 mg

**Product Characteristics**

<b>Color</b>	BROWN (Tan)	<b>Score</b>	2 pieces
<b>Shape</b>	OVAL	<b>Size</b>	10mm
<b>Flavor</b>		<b>Imprint Code</b>	1;T4
<b>Contains</b>			

**Packaging**

#	Item Code	Package Description	Marketing Start Date	Marketing End Date
1	NDC:11789-268-10	120 in 1 BOTTLE, PLASTIC		
2	NDC:11789-268-20	1000 in 1 BOTTLE, PLASTIC		

**Marketing Information**

Marketing Category	Application Number or Monograph Citation	Marketing Start Date	Marketing End Date
NADA	NADA141448	01/01/2005	

**Labeler** - LLOYD, Inc. of Iowa (962286535)

**Registrant** - LLOYD, Inc. of Iowa (007281942)

**Establishment**

Name	Address	ID/FEI	Business Operations
LLOYD, Inc. of Iowa		962286535	LABEL, PACK, MANUFACTURE

**Establishment**

Name	Address	ID/FEI	Business Operations
LLOYD, Inc. of Iowa		007281942	ANALYSIS

Revised: 9/2023

LLOYD, Inc. of Iowa