

**EMOTIONAL DETOX- calc phos, calc sulph, castanea sativa, flos, ilex aquifolium, flos, kali phos, nat mur, nat phos, nat sulph, olea europaea, flos, ornithogalum umbellatum, flos spray
Siddha Flower Essences LLC**

Disclaimer: This homeopathic product has not been evaluated by the Food and Drug Administration for safety or efficacy. FDA is not aware of scientific evidence to support homeopathy as effective.

Drug Facts

Active Ingredient

Each dose contains equal parts of:

Cal Phos 12X HPUS

Calc Sulph 6X HPUS

Castanea sativa, flos (Sweet Chestnut) 5X HPUS

Ilex aquifolium, flos (Holly) 5X HPUS

Kali Phos 6X HPUS

Nat Mur 6X HPUS

Nat Phos 6X HPUS

Nat Sulph 6X HPUS

Olea europaea, flos (Olive) 5X HPUS

Ornithogalum umbellatum, flos (Star of Bethlehem) 5X HPUS

Purpose

Each dose contains equal parts of:

Cal Phos 12X HPUS.....forgetful, difficulty performing intellectual operations

Calc Sulph 6X HPUS.....worried about future; irritable; easily angered

Castanea sativa, flos (Sweet Chestnut) 5X HPUS.....at one's limits

Ilex aquifolium, flos (Holly) 5X HPUS.....anger; resentment; rage; jealousy

Kali Phos 6X HPUS.....nervous; dread; lethargy; irritable; nervous; great despondency; melancholy; restless

Nat Mur 6X HPUS.....irritable; tired of life; joyless; indifferent; forgetful

Nat Phos 6X HPUS.....excessive lactic acid; melancholy; despondent; lassitude

Nat Sulph 6X HPUS.....inability to think; irritability in the morning; sadness; ill-humor

Olea europaea, flos (Olive) 5X HPUS.....physical and mental fatigue

Ornithogalum umbellatum, flos (Star of Bethlehem) 5X HPUS.....aftereffects of physical, mental, or emotional shocks that occurred recently or long ago

Uses

- temporarily relives symptoms of
- melancholy
- irritability
- lethargy
- mental fatigue
- worry
- physical, mental or emotional shock

indications are based on homeopathic materia medica, not clinical tests.

Warnings

Stop use and ask a doctor if symptoms persist or worsen

If pregnant or breast-feeding ask a health professional before use

Keep out of reach of children

Directions

- 5 sprays in mouth before bed
- use a maximum of 3 nights per week until symptoms are relieved
- children under 12 years: consult a doctor

Other Information

- do not use if plastic seal around cap is broken or missing.
- store in a cool, dry place.

Inactive Ingredients

Avocado*, California Poppy*, Cedar*, Cereus Jusberti*, Dutchman's Breeches*, Figwort*, Flame of the Forest*, Garlic*, Jacob's Ladder*, Lily of the Valley*, Natural Flavor, Purified Water, Swamp Onion*, Wintergreen*

*flower essence

Questions or Comments?

Call 800.570.0021

Between 9am-5pm PST

info@siddhaflowers.com

siddhaflowers.com

MFD by Siddha Flower Essences
Oxnard, CA 93030

Made in USA

Side Panel

homeopathy and flower essences:

- Jump start your body's natural ability to heal
- Natural, safe and non-habit forming
- No contraindications. May be effectively used with drugs and other supplements
- Alcohol, sugar, dairy and gluten free
- Prepared in purified water with natural preservatives
- Blends time-tested natural medicine with modern technology
- Three month supply

FOUNDATIONAL REMEDIES

may be used with targeted remedies

stress relief
daily alignment

emotional detox
deep-seated stress

TARGETED REMEDIES

sleep	male balance
healthy hair	blood sugar
female balance	lung and sinus
muscles and joints	throat and voice
youthful skin	teeth and gums
happy heart	hearing
digest	sight

Principal Display Panel

100% natural - no alcohol

siddha cell salts + flower essences

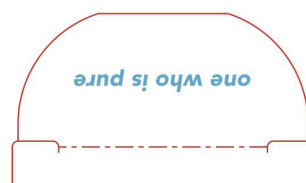
emotional detox

Irritability
Melancholy
Mental Fatigue

sugar, dairy and gluten free

Homeopathic Remedy

1 US fl oz (29.6mL)





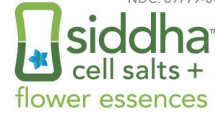
emotional detox

homeopathic oral spray



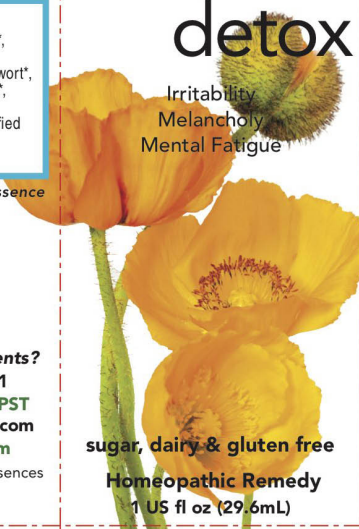
non GMO • no alcohol

NDC: 69779-003-01



emotional detox

Irritability
Melancholy
Mental Fatigue



* flower essence

homeopathy & flower essences:

- Jump start your body's natural ability to heal
- Natural, safe and non-habit forming
- No contraindications. May be effectively used with drugs and other supplements
- Alcohol, sugar, dairy & gluten free
- Prepared in purified water with natural preservatives
- Blends time-tested natural medicine with modern technology
- Three month supply

FOUNDATIONAL REMEDIES

may be used with targeted remedies
stress relief
daily alignment
emotional detox
deep-seated stress

TARGETED REMEDIES

sleep	male balance
healthy hair	blood sugar
female balance	lung & sinus
muscles & joints	throat & voice
youthful skin	teeth & gums
happy heart	hearing
digest	sight

Drug Facts

Active Ingredient Purpose
Each dose contains equal parts of:

Calc Phos 12X HPUS forgetful; difficulty performing intellectual operations
Calc Sulph 6X HPUS worried about future; irritable; easily angered
Castanea sativa, flos 5X HPUS at one's limits (Sweet Chestnut)
Ilex aquifolium, flos 5X HPUS anger; (Holly) resentment; rage; jealousy
Kali Phos 6X HPUS nervous dread; lethargy; irritable; nervous; great despondency; melancholy; restless
Nat Mur 6X HPUS irritable; tired of life; joyless; indifferent; forgetful
Nat Phos 6X HPUS excess lactic acid; melancholy; despondent; lassitude
Nat Sulph 6X HPUS inability to think; irritability in the morning; sadness; ill-humor
Olea europaea, flos 5X HPUS physical and mental fatigue (Olive)
Ornithogalum umbellatum, flos 5X HPUS (Star of Bethlehem) aftereffects of physical, mental, or emotional shocks that occurred recently or long ago

Uses • temporarily relieves symptoms of
• melancholy
• irritability
• lethargy
• mental fatigue
• worry
• physical, mental or emotional shock
indications are based on homeopathic materia medica, not clinical tests.

Warnings
Stop use and ask a doctor if symptoms persist or worsen
If pregnant or breast-feeding ask a health professional before use
Keep out of reach of children →

Drug Facts (continued)

Directions
• 5 sprays in the mouth before bed
• use a maximum of 3 nights per week until symptoms are relieved
• children under 12 years: consult a doctor

Other Information
• do not use if plastic seal around cap is broken or missing.
• store in a cool, dry place.

Inactive Ingredients
Avocado*, California Poppy*, Cedar*, Cereus Jusberti*, Dutchman's Breeches*, Figwort*, Flame of the Forest*, Garlic*, Jacob's Ladder*, Lily of the Valley*, Natural Flavor, Purified Water, Swamp Onion*, Wintergreen*

Questions or Comments?
Call 800.570.0021
Between 9am-5pm PST
info@siddhaflowers.com
siddhaflowers.com

MFD by Siddha Flower Essences
Oxnard, CA 93030
Made in USA

sugar, dairy & gluten free
Homeopathic Remedy
1 US fl oz (29.6mL)



Lot No.

With Love & Gratitude

Peel Here non GMO • alcohol, sugar, dairy & gluten free



emotional detox

Irritability • Melancholy
Mental Fatigue

Homeopathic Remedy
0.25 US fl oz (7.5mL)

THREE WEEK SUPPLY



Drug Facts

Active Ingredient	Purpose
Each dose contains equal parts of:	
Calc Phos 12X HPUS*	... forgetful; difficulty performing intellectual operations
Calc Sulph 6X HPUS*	...worried about future; irritable; easily angered
Holly, flos 5X HPUS*	...anger; resentment; rage; jealousy
Kali Phos 6X HPUS*	...nervous dread; lethargy; irritable; nervous; great despondency; melancholy; restless
Nat Mur 6X HPUS*	...irritable; tired of life; joyless; indifferent; forgetful
Nat Phos 6X HPUS*	... excess lactic acid; melancholy; despondent; lassitude
Nat Sulph 6X HPUS*	...inability to think; irritability in the morning; sadness; ill-humor
Olive, flos 5X HPUS*	...physical and mental fatigue
Star of Bethlehem, flos 5X HPUS*	...aftereffects of physical, mental, or emotional shocks that occurred recently or long ago
Sweet Chestnut, flos 5X HPUS*	...at one's limits
*The letters HPUS indicate ingredients are in the Homeopathic Pharmacopoeia of the United States	
Uses temporarily relieves symptoms of	
<ul style="list-style-type: none"> • melancholy • irritability • lethargy • mental fatigue • worry • physical, mental or emotional shock 	
indications are based on homeopathic materia medica, not clinical tests.	
Warnings	
Stop use and ask a doctor if symptoms persist or worsen	
Keep out of reach of children →	

DO NOT use if seal is broken.

EMOTIONAL DETOX

calc phos, calc sulph, castanea sativa, flos, ilex aquifolium, flos, kali phos, nat mur, nat phos, nat sulph, olea europaea, flos, ornithogalum umbellatum, flos spray

Product Information

Product Type	HUMAN OTC DRUG	Item Code (Source)	NDC:69779-003
Route of Administration	ORAL		

Active Ingredient/Active Moiety

Ingredient Name	Basis of Strength	Strength
TRIBASIC CALCIUM PHOSPHATE (UNII: 91D9GV0Z28) (CALCIUM CATION - UNII:2M83C4R6ZB)	CALCIUM CATION	12 [hp_X] in 29.6 mL
CALCIUM SULFATE ANHYDROUS (UNII: E934B3V59H) (CALCIUM CATION - UNII:2M83C4R6ZB)	CALCIUM SULFATE ANHYDROUS	6 [hp_X] in 29.6 mL
CASTANEA SATIVA FLOWER (UNII: YHZ719F7M3) (CASTANEA SATIVA FLOWER - UNII:YHZ719F7M3)	CASTANEA SATIVA FLOWER	5 [hp_X] in 29.6 mL
ILEX AQUIFOLIUM FLOWERING TOP (UNII: 5ENR9SAN1W) (ILEX AQUIFOLIUM FLOWERING TOP - UNII:5ENR9SAN1W)	ILEX AQUIFOLIUM FLOWERING TOP	5 [hp_X] in 29.6 mL
POTASSIUM PHOSPHATE, DIBASIC (UNII: C171S98N1Z) (POTASSIUM CATION - UNII:295O53K152)	POTASSIUM PHOSPHATE, DIBASIC	6 [hp_X] in 29.6 mL
SODIUM CHLORIDE (UNII: 451W47IQ8X) (SODIUM CATION - UNII:LYR4M0NH37)	SODIUM CHLORIDE	6 [hp_X] in 29.6 mL
SODIUM PHOSPHATE, DIBASIC, HEPTAHYDRATE (UNII: 70WT22SF4B) (SODIUM CATION - UNII:LYR4M0NH37)	SODIUM PHOSPHATE, DIBASIC, HEPTAHYDRATE	6 [hp_X] in 29.6 mL

SODIUM SULFATE (UNII: 0YPR65R21J) (SODIUM SULFATE ANHYDROUS - UNII:36KCS0R750)	SODIUM SULFATE	6 [hp_X] in 29.6 mL
OLEA EUROPAEA FLOWER (UNII: 498M34P1VZ) (OLEA EUROPAEA FLOWER - UNII:498M34P1VZ)	OLEA EUROPAEA FLOWER	5 [hp_X] in 29.6 mL
ORNITHOGALUM UMBELLATUM FLOWERING TOP (UNII: CZD6M4PY4B) (ORNITHOGALUM UMBELLATUM FLOWERING TOP - UNII:CZD6M4PY4B)	ORNITHOGALUM UMBELLATUM FLOWERING TOP	5 [hp_X] in 29.6 mL

Inactive Ingredients

Ingredient Name	Strength
AVOCADO (UNII: SDS87L369F)	
ESCHSCHOLZIA CALIFORNICA FLOWERING TOP (UNII: 023XWA119J)	
LAMPROCAPNOS SPECTABILIS FLOWER (UNII: X4GD45IWN4)	
SCROPHULARIA NODOSA (UNII: 7H443NUB2T)	
BUTEA MONOSPERMA FLOWER (UNII: N13VBQ9EOY)	
GARLIC (UNII: V1V998DC17)	
LINARIA VULGARIS (UNII: 6Z84RO772C)	
CONVALLARIA MAJALIS FLOWERING TOP (UNII: 4G7VTP9FC4)	
WATER (UNII: 059QF0KO0R)	
GAULTHERIA PROCUMBENS TOP (UNII: 830295X963)	

Packaging

#	Item Code	Package Description	Marketing Start Date	Marketing End Date
1	NDC:69779-003-01	1 in 1 CARTON	04/09/2015	
1		29.6 mL in 1 BOTTLE; Type 0: Not a Combination Product		
2	NDC:69779-003-02	1 in 1 CARTON	04/03/2017	
2		7.5 mL in 1 BOTTLE; Type 0: Not a Combination Product		

Marketing Information

Marketing Category	Application Number or Monograph Citation	Marketing Start Date	Marketing End Date
unapproved homeopathic		04/09/2015	

Labeler - Siddha Flower Essences LLC (053674034)

Registrant - Siddha Flower Essences LLC (053674034)

Establishment

Name	Address	ID/FEI	Business Operations
Siddha Flower Essences LLC		053674034	manufacture(69779-003)

