

RID LICE KILLING- piperonyl butoxide and pyrethrum extract shampoo
Bayer HealthCare LLC.

Disclaimer: Most OTC drugs are not reviewed and approved by FDA, however they may be marketed if they comply with applicable regulations and policies. FDA has not evaluated whether this product complies.

RID Lice Killing Shampoo

Drug Facts

Drug Facts

Active ingredients

Piperonyl butoxide (4%)

Pyrethrum extract (equivalent to 0.33% pyrethrins)

Purpose

Lice treatment

Uses

Uses treats head, pubic (crab), and body lice

Warnings

For external use only

Do not use

- near the eyes
- inside the nose, mouth, or vagina
- on lice in eyebrows or eyelashes. See a doctor if lice are present in these areas.
- if you have ever had an allergic reaction to this product or any of its ingredients

Ask a doctor before use if you are allergic to ragweed. May cause breathing difficulty or an asthmatic attack.

When using this product

- keep eyes tightly closed and protect eyes with a washcloth or towel
- if product gets in eyes, flush with water right away
- scalp itching or redness may occur

Stop use and ask a doctor if

- breathing difficulty occurs
- eye irritation occurs
- skin or scalp irritation continues or infection occurs

Keep out of reach of children. If swallowed, get medical help or contact a Poison Control Center right away.

Directions

- **Important: Read warnings before use**

Adults and children 2 years and over:

Inspect

- check each household member with a magnifying glass in bright light for lice/nits (eggs)
- look for tiny nits near scalp, beginning at back of neck and behind ears
- examine small sections of hair at a time
- unlike dandruff which moves when touched, nits stick to the hair
- if either lice or nits are found, treat with this product

Treat

- apply thoroughly to **DRY HAIR** or other affected area. For head lice, first apply behind ears and to back of neck.
- allow product to remain for 10 minutes, but no longer
- use warm water to form a lather, shampoo, then thoroughly rinse
- for head lice, towel dry hair and comb out tangles

Remove lice and their eggs (nits)

- use a fine-tooth or special lice/nit comb. Remove any remaining nits by hand (using a throw-away glove).
- hair should remain slightly damp while removing nits
- if hair dries during combing, dampen slightly with water
- for head lice, part hair into sections. Do one section at a time starting on top of head. Longer hair may take 1 to 2 hours.
- lift a 1- to 2-inch wide strand of hair. Place comb as close to scalp as possible and comb with a firm, even motion away from scalp.

Other information

Other information

- keep carton for important product information
- see Consumer Information Insert for additional information
- avoid excessive heat

Inactive ingredients ammonium laureth sulfate, dehydrated alcohol, fragrance, isopropyl alcohol, PEG-25 hydrogenated castor oil, polyquaternium-10, purified water

Questions or comments

Questions or comments? 1-800-RID-LICE (1-800-743-5423) www.ridlice.com

Consumer Information



1-2-3 LICE ELIMINATION SYSTEM
Completely eliminate lice from your family and home.

**STEP 1:
TREAT**

**RID®
Lice Killing
Shampoo**

See Usage Guidelines below to estimate how much product you will need.

NOTE:

- Use towels to protect child's eyes from treatment and prevent clothes from getting wet.
- Apply RID® Shampoo thoroughly to **DRY HAIR** or other affected area.
- Wetting the hair makes the treatment making it less effective.
- Also, lice can hold their breath when immersed in water making it difficult for the active ingredient to penetrate the lice.



- For head lice, thoroughly massage shampoo into scalp, behind the ears and to the back of the neck. Lice can crawl up and down the shaft of the hair very quickly so it is important to apply the treatment from the roots to the ends of the hair.



- Allow product to remain on the hair (or other affected area) for 10 minutes, but no longer.



- Add warm water and massage to form a lather.
- Rinse thoroughly.



- For head lice, towel dry hair and comb out tangles.
- Proceed to Step 2.
- **A second treatment must be done in 7 to 10 days to kill any newly-hatched lice.**

**Usage
Guidelines**

Hair Length	Short (ear length or shorter)	Medium (shoulder length)	Long (past shoulder length)
Approximate Amount For 1 Adult / Child:	First Application: 1 oz - 2 oz Second Application: 1 oz - 2 oz Total: 2 oz - 4 oz	First Application: 2 oz - 3 oz Second Application: 2 oz - 3 oz Total: 4 oz - 6 oz	First Application: 3 oz - 4 oz Second Application: 3 oz - 4 oz Total: 6 oz - 8 oz

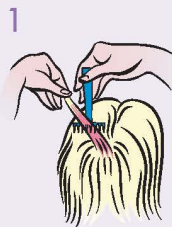
**STEP 2:
REMOVE**

**RID®
Lice
Comb**

Combing must be done **AFTER** use of RID® Lice Killing Shampoo (Step 1). Combing out eggs & nits* is an **essential step** to complete lice elimination.

NOTE:

- A fine-toothed comb or the special lice/nit removing comb (included) must be used to remove lice, eggs, and nits from hair.
- Before starting have on hand - extra towels - bobby pins or hair clips - facial tissues or paper towels - regular comb for parting and detangling hair - detangler/conditioner to make combing easier.
- Find a distraction for your child (e.g. books, TV, games).



- Apply detangler/conditioner and comb out damp hair with a regular wide-tooth comb to take out snarls and tangles.
- Hold the RID® comb with the teeth facing you.



- Working one section at a time, lift a 1- to 2-inch wide strand of hair.
- Place comb as close to scalp as possible and comb with a firm, even motion away from scalp, from the roots to the end of the hair (newly-laid eggs are found near the roots of the hair so it is important to get the teeth very close to the scalp). Make sure the teeth are deeply embedded into the strands as you comb through.
- Always comb away from the head.
- Wipe eggs and nits from the teeth of the comb with a tissue or paper towel.



- Pin back the 1- to 2-inch wide strand you just finished combing with a bobby pin or hair clip.
- Lift up another 1- to 2-inch wide strand and repeat the combing procedure.
- When one section has been combed and pinned, repeat the process for another section of hair. Continue to comb hair 1- to 2-inches at a time until entire head has been combed and pinned.



- Keep the hair damp during combing and re-apply detangler/conditioner as needed.
- After you have combed and pinned the entire head, remove all bobby pins or hair clips and rinse hair thoroughly with warm water. If desired, you may also wash with regular shampoo.
- Discard all the used tissues or paper towels into a bag, seal and dispose to prevent lice from coming back.

*Nits are empty eggshells left behind when lice hatch from eggs.

**STEP 3:
CONTROL**

**RID® Home Lice,
Bedbug & Dust Mite
Spray**

Use RID® Home Lice, Bedbug & Dust Mite Spray to kill lice and their eggs on mattresses, furniture, car interiors and other non-washable items.



- Use RID® Home Lice, Bedbug & Dust Mite Spray to kill lice and their eggs on mattresses, furniture, car interiors and other non-washable items. A regular disinfectant spray will not kill lice and their eggs.
- After spraying the infested area, vacuum rugs and carpets. Dispose of the vacuum cleaner bags after use.
- Wash all clothes, towels, washable hats, scarves, coats and bed linens in hot water. Dry in high heat for at least 20 minutes.
- Dry clean non-washables.
- Personal combs and brushes may be disinfected by soaking in hot

water [above 54°C (130°F)] for at least 10 minutes.

- Place stuffed toys in plastic bags and seal them for 4 weeks.

Checklist

- Home and auto upholstery
- Mattresses, pillows, pillowcases
- Bed Linen
- Towels
- Stuffed animals, toys
- Headphones
- Hats
- Headbands
- Bike/sports helmets
- Coats, scarves, earmuffs, gloves
- Play mats
- Clothing
- Barrettes/hair ornaments
- Hair rollers
- Combs and brushes
- Baseball caps

**DAILY
CHECKING**

TO PREVENT REINFESTATION:

- Carefully inspect infested family member **daily** for at least 2 weeks. If you see eggs or nits, repeat Step 2.
- Check other family members for Head Lice. If anyone in the family is infested, follow Step 1 and Step 2. Repeat Step 3 with any articles or items with which they have come into contact.

**SECOND
APPLICATION**

Repeat the same procedures within 7-10 days for



There may be some eggs that were not combed out after the first treatment. These eggs will hatch and need to be killed with the second treatment.

DID YOU KNOW

HEAD LICE

- Lay small white eggs (nits) on hair shaft close to scalp.
- Nits are most easily found on back of neck or behind ears.
- Disinfect hats, hair ribbons, scarves, coats, towels, and bed linens by machine washing in hot water [above 54°C (130°F)], then using hottest dryer cycle for at least 20 minutes.
- Items that cannot be washed (bedspreads, blankets, pillows, stuffed toys, etc.) should be dry-cleaned or sealed in a plastic bag for 4 weeks, then removed outdoors and shaken out very hard before using again.
- Items that cannot be washed, dry-cleaned, or stored may be sprayed with a product designed for this purpose, such as the

RID® Home Lice, Bedbug & Dust Mite Spray.

- Soak all combs and brushes in hot water [above 54°C (130°F)] for at least 10 minutes.
- Vacuum all carpets, mattresses, upholstered furniture, and car seats that may have been used by affected people.

PUBIC (CRAB) LICE

- May be transmitted by sexual contact. Sexual partners should be treated simultaneously to avoid reinfestation.
- Lice are very small and look like brown or grey dots on skin.
- Usually cause intense itching and lay small white eggs (nits) on the hair shaft generally close to the skin surface.
- May be present on the short hairs of groin,

thighs, trunk, and underarms, and occasionally on the beard and mustache.

- Disinfect underwear by machine washing in hot water [above 54°C (130°F)], then using hottest dryer cycle for at least 20 minutes.

BODY LICE

- Body Lice and their eggs (nits) are generally found in the seams of clothing particularly in waistline and armpit area.
- Body Lice feed on skin then return to clothing to lay their eggs.
- Disinfect clothing by machine washing in hot water [above 54°C (130°F)], then using hottest dryer cycle for at least 20 minutes.
- Do not seal clothing in plastic bag because nits can remain dormant for up to 30 days.



Bayer HealthCare

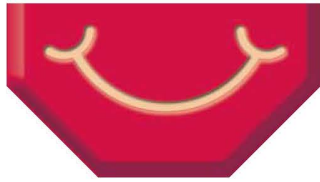
Made in U.S.A.
Distributed by:
Bayer HealthCare LLC
Consumer Care
P.O. Box 1910
Morristown, NJ 07962-1910 USA

Bayer, the Bayer Cross, RID and the RID logo are registered trademarks of Bayer.



If you have questions, call 1-800-RID-LICE or log on to www.rid.lice.com 24 hours a day.

RID®
82970860, R.0



Pasos para lograr el Éxito con RID®



SISTEMA DE ELIMINACIÓN DE PIOJOS 1-2-3

Elimine completamente los piojos de su familia y su hogar.

PASO 1: TRATAR

Champú para matar piojos RID®

Vea las Pautas de Uso indicadas abajo para calcular cuánto producto necesitará.

NOTA:

- Use toallas para proteger los ojos del niño del producto y evitar que la ropa se moje.
- Asegúrese de aplicar el producto sobre todo el **CABELLO SECO** u otras áreas afectadas.
- Si moja el cabello, se diluye el producto, haciéndolo menos eficaz.
- Asimismo, los piojos pueden permanecer sin respirar cuando están sumergidos en el agua, lo que hace más difícil que el ingrediente activo los penetre.



- Para los piojos de la cabeza, aplique el producto minuciosamente masajeador detrás de las orejas y la nuca. Los piojos pueden subir y bajar por el cabello rápidamente, por lo que es importante aplicar el tratamiento desde las raíces hasta las puntas del cabello.



- Deje que el producto permanezca en el cabello (o en otras áreas afectadas) durante 10 minutos, pero no más.



- Agregue agua templada y masajee hasta formar espuma.
- Enjuague a fondo.



- Para los piojos de la cabeza, seque el cabello con una toalla y desenredelo con el peine.
- Avance al Paso 2.

Se debe aplicar un segundo tratamiento después de 7 a 10 días para matar los piojos recién nacidos.

Pautas de Uso	Largo del cabello	Corto (hasta las orejas o más corto)	Mediano (hasta los hombros)	Largo (más allá de los hombros)
Cantidad aproximada para 1 adulto/niño:	Primera aplicación:	1 oz - 2 oz	2 oz - 3 oz	3 oz - 4 oz
	Segunda aplicación:	1 oz - 2 oz	2 oz - 3 oz	3 oz - 4 oz
	Total:	2 oz - 4 oz	4 oz - 6 oz	6 oz - 8 oz

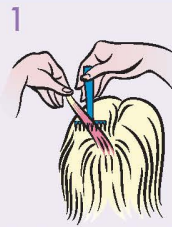
PASO 2: ELIMINAR

Peine para piojos RID®

Se debe peinar **DESPUÉS** de usar el Champú para matar piojos RID® (Paso 1). Remover los huevos y las liendres* es un **paso esencial** para eliminar completamente los piojos.

NOTA:

- Se debe usar un peine de púas finas o un peine especial (incluido) para remover piojos, huevos y liendres del cabello.
- Antes de comenzar tenga a mano – toallas adicionales – pasadores o ganchos para el cabello – pañuelos desechables faciales o toallas de papel – un peine normal para separar y desenredar el cabello – desinfectante/condicionador para que sea más fácil peinar
- Disponga de algo para distraer a su hijo (por ejemplo, libros, TV, un juego).



- Aplique desinfectante/condicionador y peine el cabello húmedo con un peine normal de púas anchas para desenredar el cabello.
- Sostenga el peine RID® con las púas de frente hacia usted.



- Separando una sección por vez, levante un mechón de pelo de 1 a 2 pulgadas de ancho.
- Coloque el peine lo más cerca posible del cabello y arrástrelo firmemente desde las raíces hasta las puntas del cabello (los huevos recién puestos se encuentran cerca de las raíces del cabello, por lo que es importante acercar las púas todo lo posible al cuero cabelludo). Asegúrese de que las púas se inserten profundamente en el cabello a medida que lo va peinando.



- Sujete el mechón de 1 a 2 pulgadas que acaba de peinar mediante un pasador o gancho para el cabello.
- Levante otro mechón de 1 a 2 pulgadas y repita el proceso de peinado.
- Cuando se haya peinado y sujetado una sección, repita el proceso con otra sección del cabello. Siga peinando el cabello de 1 a 2 pulgadas a la vez hasta que se haya peinado y sujetado todo el cabello.



- Mantenga el cabello húmedo durante el peinado y vuelva a aplicar desinfectante/condicionador cuando sea necesario.
- Después de haya peinado y sujetado todo el cabello, quite todos los pasadores o ganchos que haya colocado y enjuague muy bien el cabello con agua tibia. Si así lo desea, también puede lavarlo con champú regular.
- Deseche todos los pañuelos o toallas de papel que haya usado en una bolsa, cántrela y deshágase de ella para evitar que los piojos regresen.

*Las liendres son las cáscaras de huevo vacías dejadas por los piojos una vez que nacen.

PASO 3: CONTROLAR

Aerosol para el control de piojos, chinches y ácaros del polvo en el hogar RID®

Use el Aerosol para el control de piojos, chinches y ácaros en el hogar RID® para matar piojos y sus huevos en colchones, muebles, interiores de automóviles y otros artículos no lavables.



- Use el Aerosol para el control de piojos, chinches y ácaros del polvo en el hogar RID® para matar piojos y sus huevos en colchones, muebles, interiores de automóviles y otros artículos no lavables. Los desinfectantes en aerosol comunes no matan los piojos y sus huevos.
- Después de rociar el área infestada, pase la aspiradora por tapetes y alfombras. Deshágase de las bolsas de la aspiradora después de usarlas.
- Lave toda la ropa, las toallas, los sombreros lavables, las bufandas, los abrigos y la ropa de cama en agua caliente. A continuación, seque usando un ciclo caliente durante al menos 20 minutos.
- Las prendas que no se puedan lavar se deben limpiar a seco.

- Desinfecte todos los peines y cepillos personales sumergiéndolos en agua caliente [por encima de 54 °C (130 °F)] durante al menos 10 minutos.
- Coloque los juguetes de peluche en bolsas de plástico y manténgalas herméticamente cerradas durante 4 semanas.

Listado de verificación

- Tapizados del hogar y el automóvil
- Colchones, almohadas y almohadones
- Ropa de cama
- Toallas
- Animales y juguetes de peluche
- Auriculares
- Sombreros
- Cintas para el cabello
- Cascos de bicicleta o deportivos
- Abrigos, bufandas, orejeras y guantes
- Colchonetas
- Vestimenta
- Hebillas/accesorios para el cabello
- Ruleros
- Peines y cepillos
- Correas de bebé/biel

VERIFICACIÓN DIARIA

PARA EVITAR LA REINFESTACIÓN:

- **Todos los días**, durante al menos 2 semanas, revise minuciosamente al miembro de la familia infestado. Si observa huevos o liendres, repita el Paso 2.
- Revise a los demás miembros de la familia en busca de piojos de la cabeza. Si alguien de la familia está infestado, siga el Paso 1 y el Paso 2. Repita el Paso 3 con cualquier artículo o prenda con la que esa persona pueda haber estado en contacto.

SEGUNDA APLICACIÓN

Repita los mismos procedimientos a los 7-10 días del PASO 1: TRATAR y PASO 2: ELIMINAR. Puede haber algunos huevos que no se eliminaron con el peine después del primer tratamiento. Estos huevos producirán piojos que tendrán que eliminarse con el segundo tratamiento.

¿SABÍA QUE...?

LOS PIOJOS DE LA CABEZA

- Ponen huevos pequeños de color blanco (liendres) en el tallo del pelo cerca del cuero cabelludo.
- Las liendres se suelen encontrar en la nuca y detrás de las orejas.
- Desinfecte sombreros, cintas para el cabello, bufandas, abrigos, toallas y ropa de cama lavándolos en la lavadora con agua caliente [por encima de 54 °C (130 °F)] y, a continuación, usando el ciclo de temperatura más alta de la secadora durante al menos 20 minutos.

- Sumerja todos los peines y cepillos en agua caliente [por encima de 54 °C (130 °F)] durante al menos 10 minutos.
- Aspire todas las alfombras, colchones, muebles tapizados y asientos de automóvil que puedan haber sido usados por las personas afectadas.

PIOJOS DEL PUBIS (LADILLAS)

- Las ladillas suelen transmitirse durante las relaciones sexuales. Las parejas se deben aplicar el tratamiento en forma simultánea para evitar la reinfestación.
- Las ladillas con muy poca vida y no se reproducen.

- Desinfecte la ropa interior lavándola en lavadora con agua caliente [por encima de 54 °C (130 °F)] y, a continuación, usando el ciclo de temperatura más alta de la secadora durante al menos 20 minutos.

PIOJOS DEL CUERPO

- Los piojos del cuerpo y sus huevos (liendres) se encuentran generalmente en las costuras de la ropa, especialmente alrededor de la cintura y en las axilas.
- Los piojos del cuerpo se trasladan a la piel para alimentarse y luego regresan a la ropa para poner huevos.



Bayer HealthCare

Fabricado en EE.UU.
Distribuido por:
Bayer HealthCare LLC
Consumer Care
P.O. Box 1910
Morristown, NJ 07962-1910 USA

Bayer, the Bayer Cross, RID and the RID



Si tiene alguna pregunta, llame al 1-800-RID-LICE o visite

Los artículos que no puedan lavarse (cubrecamas, mantas, almohadas, peluches, etc.) se deben llevar a la tintorería para su limpieza a seco o sellar en una bolsa de plástico durante 4 semanas y después llevar fuera de la casa y sacudir muy fuerte antes de volver a usarlos.

Los artículos que no puedan lavarse, limpiarse a seco o guardarse pueden rociarse con un producto diseñado para este fin, como el Aerosol para el control de piojos, chinches y ácaros del polvo en el hogar RID®.

Los RID comb son muy efectivos para eliminar piojos o grises sobre la piel.

Generalmente ocasionan una picazón intensa y ponen pequeños huecos blancos (liendres) en el tallo del vello cerca de la superficie de la piel.

Pueden estar presentes en el vello corto de la ingle, los muslos, el tronco y las axilas y, a veces, en la barba y el bigote.

Desinfecte la ropa lavándola en lavadora con agua caliente [a más de 54°C (130°F)] y, a continuación, usando el ciclo de temperatura más alta de la secadora durante al menos 20 minutos.

No guarde la ropa dentro de bolsas de plástico, pues las liendres de los piojos del cuerpo pueden sobrevivir en estado latente hasta 30 días.

Logo are registered trademarks of Bayer.

www.ridlice.com las 24 horas.

RID

LICE KILLING

SHAMPOO

LICE TREATMENT

- Proven, effective treatment
- Shampoo and conditioner in one
- The RID comb is proven 100% effective for removing lice
- East-to-follow illustrated instructions

Champu' RID

exterminador

de piojos

Se incluyen

instrucciones en español

24/7

SUPPORT

CALL AN EXPERT

1-800-RID-LICE

HOW-TO VIDEOS

ridlice.com

Includes

two combs

8 FL OZ (236 mL)

2 RID LICE COMBS



Drug Facts

Active ingredients	Purpose
Piperonyl butoxide (4%)	Lice treatment
Pyrethrum extract (equivalent to 0.33% pyrethrins)	Lice treatment

Uses treats head, pubic (crab), and body lice

Warnings
For external use only

Do not use

- near the eyes
- inside the nose, mouth, or vagina
- on lice in eyebrows or eyelashes. See a doctor if lice are present in these areas.
- If you have ever had an allergic reaction to this product or any of its ingredients

Ask a doctor before use if you are allergic to ragweed. May cause breathing difficulty or an asthmatic attack.

When using this product

- Keep eyes lightly closed and protect eyes with a washcloth or towel
- If product gets in eyes, flush with water right away
- scalp itching or redness may occur

Stop use and ask a doctor if

- breathing difficulty occurs
- eye irritation occurs
- skin or scalp irritation continues or infection occurs

Keep out of reach of children. If swallowed, get medical help or contact a Poison Control Center right away.

Directions

- Important: Read warnings before use**
- Adults and children 2 years and over:

Inspect

- check each household member with a magnifying glass in bright light for lice/nits (eggs)
- look for tiny nits near scalp, beginning at back of neck and behind ears
- examine small sections of hair at a time
- unlike dandruff which moves when touched, nits stick to the hair
- if either lice or nits are found, treat with this product

Treat

- apply thoroughly to DRY HAIR or other affected area. For head lice, first apply behind ears and to back of neck.
- allow product to remain for 10 minutes, but no longer
- use warm water to form a lather, shampoo, then thoroughly rinse
- for head lice, towel dry hair and comb out tangles

Remove lice and their eggs (nits)

- use a fine-tooth or special lice/nit comb. Remove any remaining nits by hand (using a throw-away glove).
- hair should remain slightly damp while removing nits
- if hair dries during combing, dampen slightly with water
- for head lice, part hair into sections. Do one section at a time starting on top of head. Longer hair may take 1 to 2 hours.
- lift a 1- to 2-inch wide strand of hair. Place comb as close to scalp as possible and comb with a firm, even motion away from scalp.
- pin back each strand of hair after combing
- clean comb often. Wipe nits away with tissue and discard in a plastic bag. Seal bag and discard to prevent lice from coming back.
- after combing, thoroughly recheck for lice/nits. Repeat combing if necessary.
- check daily for any lice/nits that you missed
- a second treatment must be done in 7 to 10 days to kill any newly hatched lice
- if infestation continues, see a doctor for other treatments

Children under 2 years: ask a doctor

Other information

- keep carton for important product information
- see Consumer Information Insert for additional information
- avoid excessive heat

Inactive ingredients ammonium lauryl sulfate, dehydrated alcohol, fragrance, isopropyl alcohol, PEG-25 hydrogenated castor oil, polyquaternium-10, purified water

Questions or comments? 1-800-RID-LICE (1-800-743-5423)
www.ridice.com

RID® LICE KILLING SHAMPOO

If either lice or nits are found, you may begin treatment with this product; however, the diagnosis of head lice infestation is best made by finding live lice on the scalp or hair.

RID® Lice Killing Shampoo is most effective when used with the RID® Lice Comb, RID® Lice & Egg Comb-Out Spray and RID® Home Lice, Bedbug and Dust Mite Spray, as part of the RID® 3-Step Lice Elimination Process to treat, remove and control lice.

The amount of shampoo needed will vary by hair length. You may need additional shampoo for the second treatment required 7 to 10 days later, or to treat other members of your household. See guidelines below.

Hair Length	Approximate Amount For 1 Adult/Child:
Short (ear length or shorter)	First Application: 1 oz - 2 oz
	Second Application: 1 oz - 2 oz
	Total: 2 oz - 4 oz
Medium (shoulder length)	First Application: 2 oz - 3 oz
	Second Application: 2 oz - 3 oz
	Total: 4 oz - 6 oz
Long (past shoulder length)	First Application: 3 oz - 4 oz
	Second Application: 3 oz - 4 oz
	Total: 6 oz - 8 oz

RID® LICE KILLING SHAMPOO

LICE KILLING SHAMPOO
L I C E T R E A T M E N T

- Proven, effective treatment
- Shampoo and conditioner in one
- The RID comb is proven 100% effective for removing lice
- Easy-to-follow illustrated instructions

24/7 SUPPORT
CALL AN EXPERT
1-800-RID-LICE
HOW-TO VIDEOS
ridlice.com

Champú RID exterminador de piojos
Se incluyen instrucciones en español

BAYER

Includes two combs

8 FL OZ (236 mL)
2 RID LICE COMBS

RID® LICE KILLING SHAMPOO

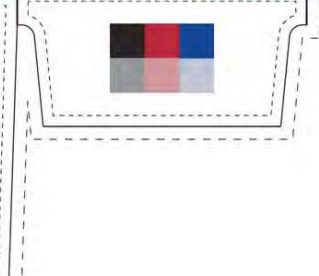
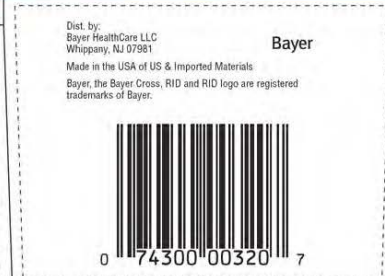
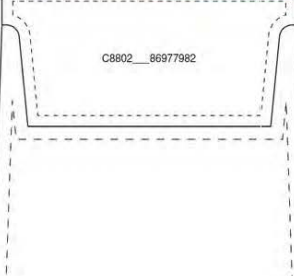
The RID comb is proven 100% effective as demonstrated in a laboratory study performed by trained testers. Individual results may vary. RID® is the market leader in lice treatment and offers a complete family of products to kill lice, remove their eggs and treat your home. Look for these other RID® products:

RID® Lice Treatment Complete Kit

- RID® Lice Killing Shampoo
- RID® patented Lice Comb
- RID® Lice and Egg Comb-Out Spray
- RID® Home Lice Killing Spray

RID® Home Lice, Bedbug & Dust Mite Spray

- Kills lice and eggs on mattresses, furniture, car interiors and other non-washable items



RID LICE KILLING
piperonyl butoxide and pyrethrum extract shampoo

Product Information			
Product Type	HUMAN OTC DRUG	Item Code (Source)	NDC:0280-9000
Route of Administration	TOPICAL		

Active Ingredient/Active Moiety

Ingredient Name	Basis of Strength	Strength
PIPERONYL BUTOXIDE (UNII: LWK91TU9AH) (PIPERONYL BUTOXIDE - UNII:LWK91TU9AH)	PIPERONYL BUTOXIDE	40 mg in 1 mL
PYRETHRUM EXTRACT (UNII: ZUM06L90GV) (PYRETHRUM EXTRACT - UNII:ZUM06L90GV)	PYRETHRUM EXTRACT	3.3 mg in 1 mL

Inactive Ingredients

Ingredient Name	Strength
PEG-25 HYDROGENATED CASTOR OIL (UNII: 0ZNO9PJJ9J)	
POLYQUATERNIUM-10 (125 MPAS AT 2 %) (UNII: L45WU8S981)	
AMMONIUM LAURETH-2 SULFATE (UNII: 698O4Z48G6)	
WATER (UNII: 059QF0K00R)	
ISOPROPYL ALCOHOL (UNII: ND2M416302)	

Product Characteristics

Color	white (Clear)	Score	
Shape		Size	
Flavor		Imprint Code	
Contains			

Packaging

#	Item Code	Package Description	Marketing Start Date	Marketing End Date
1	NDC:0280-9000-02	1 in 1 CARTON	03/01/2010	
1		59 mL in 1 BOTTLE; Type 0: Not a Combination Product		
2	NDC:0280-9000-04	1 in 1 CARTON	03/01/2010	
2		118 mL in 1 BOTTLE; Type 0: Not a Combination Product		
3	NDC:0280-9000-06	1 in 1 CARTON	03/01/2010	
3		177 mL in 1 BOTTLE; Type 0: Not a Combination Product		
4	NDC:0280-9000-08	1 in 1 CARTON	03/01/2010	
4		237 mL in 1 BOTTLE; Type 0: Not a Combination Product		

Marketing Information

Marketing Category	Application Number or Monograph Citation	Marketing Start Date	Marketing End Date
OTC monograph final	part358G	03/01/2010	

Labeler - Bayer HealthCare LLC. (112117283)