

## **CHERRY COUGH DROP- menthol lozenge HEB**

-----  
**Menthol 5.8 mg**

### **Active ingredient (in each drop)**

Menthol 5.8 mg

### **Purpose**

Cough suppressant / Oral anesthetic

**Uses** temporarily relieves:

- cough as may occur with a cold
- occasional minor irritation and sore throat

### **Warnings**

**Sore throat warning:** if sore throat is severe, persists for more than 2 days, is accompanied or followed by fever, headache, rash, swelling, nausea, or vomiting, consult a doctor promptly. If sore mouth symptoms do not improve in 7 days, see your dentist or doctor promptly. These symptoms may be serious.

### **Ask a doctor before use if you have:**

- persistent or chronic cough such as occurs with smoking, asthma, or emphysema
- cough accompanied by excessive phlegm (mucus)

### **Stop use and ask doctor if**

- cough persists for more than 7 days, tends to recur, or is accompanied by fever, rash, or persistent headache.
- sore throat is severe, or irritation, pain or redness lasts or worsens
- sore mouth does not improve in 7 days

**If pregnant or breast-feeding,** ask a health professional before use.

**Keep out of reach of children.**

### **Directions**

adults and children 5 years and over - dissolve 1 lozenge slowly in mouth. Repeat every 2 hours as needed or as directed by a doctor.

children under 5 years - ask a doctor

### **Other information**

10 calories per drop

**Inactive ingredients:** Corn starch, corn syrup, eucalyptus oil, FD&C red no. 40, glycerin, medium chain triglycerides, natural and artificial flavors, soybean oil, sucrose and water.

**Questions?** Or to report an adverse event call **1-800-245-2898**. Monday - Friday, 9AM to 4PM EST

---

DO NOT USE IF BAG IS  
TORN OR OPEN.

CHERRY

Compare to active  
ingredient in HALLS®

H·E·B®

Cough  
Drops

30  
DROPS

CHERRY

- Menthol cough suppressant
- Oral anesthetic
- Soothes sore





- Soothes sore throat pain
- Temporarily relieves cough



**30 COUNT**

PN-501480



8976-1711

Gluten-Free



This product is not manufactured or distributed by the owner of the registered trademark HALLS®.

**MADE WITH PRIDE & CARE FOR H-E-B® SAN ANTONIO, TX 78204**

**Questions?** Or to report an adverse event call 1-800-245-2898. Monday - Friday, 9AM to 4PM EST

**Inactive ingredients:** Corn starch, corn syrup, eucalyptus oil, FD&C red no. 40, glycerin, medium chain triglycerides, natural & artificial flavors, soybean oil, sucrose and water.

**Other information** ■ 10 calories per drop

**Directions**  
 adults and children 5 years and over  
 dissolve 1 lozenge slowly in mouth. Repeat every 2 hours as needed or as directed by a doctor.  
 children under 5 years ask a doctor

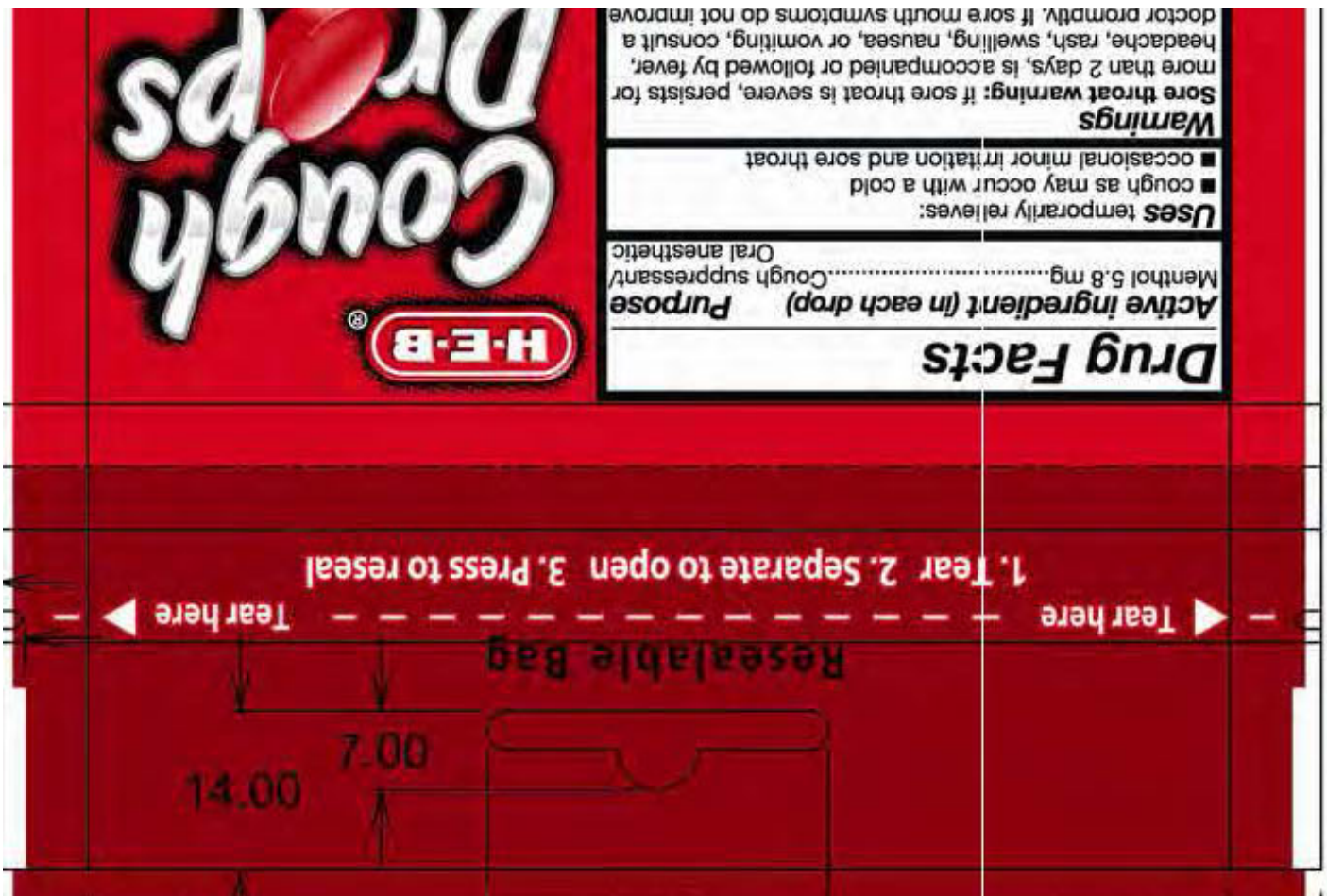
**Ask a doctor before use if you have:**  
 ■ persistent or chronic cough such as occurs with smoking, asthma, or emphysema  
 ■ cough accompanied by excessive phlegm (mucus)  
**Stop use and ask doctor if**  
 ■ cough persists for more than 7 days, tends to recur, or is accompanied by fever, rash, or persistent headache.  
 ■ sore throat is severe, or irritation, pain or redness lasts or worsens  
 ■ sore mouth does not improve in 7 days  
**If pregnant or breast-feeding, ask a health professional before use. Keep out of reach of children.**  
 in 7 days, see your dentist or doctor promptly. These symptoms may be serious.

**100% GUARANTEE**  
 If you aren't completely pleased with this product, we'll be happy to replace it or refund your money. You have our word on it.

**H-E-B®**

*promise*

- Menthol cough suppressant
- Oral anesthetic
- Soothes sore throat pain
- Temporarily relieves cough



## CHERRY COUGH DROP

menthol lozenge

### Product Information

<b>Product Type</b>	HUMAN OTC DRUG	<b>Item Code (Source)</b>	NDC:37808-033
<b>Route of Administration</b>	ORAL		

### Active Ingredient/Active Moiety

Ingredient Name	Basis of Strength	Strength
MENTHOL (UNII: L7T10EIP3A) (MENTHOL - UNII:L7T10EIP3A)	MENTHOL	5.8 mg

### Inactive Ingredients

Ingredient Name	Strength
WATER (UNII: 059QF0KO0R)	

### Product Characteristics

<b>Color</b>	red	<b>Score</b>	score with uneven pieces
<b>Shape</b>	OVAL	<b>Size</b>	17mm
<b>Flavor</b>	CHERRY	<b>Imprint Code</b>	B

**Contains****Packaging**

#	Item Code	Package Description	Marketing Start Date	Marketing End Date
1	NDC:37808-033-30	30 in 1 BAG; Type 0: Not a Combination Product	05/15/2013	

**Marketing Information**

Marketing Category	Application Number or Monograph Citation	Marketing Start Date	Marketing End Date
OTC Monograph Drug	M012	05/15/2013	

**Labeler** - HEB (007924756)**Registrant** - BestCo Inc. (002149136)

## Establishment

Name	Address	ID/FEI	Business Operations
BestCo Inc.		002149136	manufacture(37808-033)

Revised: 10/2023

HEB